



PROVEN SOLUTIONS FOR STORAGE MANAGEMENT



# PartitionMagic<sup>®</sup> 6.0

User Guide

# **PartitionMagic 6.0**

## **User Guide**

Manual Edition 1—October 2000

©1994–2000, PowerQuest Corporation

All rights reserved. U.S. patents 5,675,769, 5,706,472; 5,930,831; 6,088,778;  
and 6,108,759; other patents pending in the United States and elsewhere.

The entire risk of the use or the result of the use of this software and documentation remains with the user. No part of this documentation may be reproduced in any means, electronic or mechanical, for any purpose, except as expressed in the Software License Agreement.

This software and documentation are copyrighted. All other rights, including ownership of the software, are reserved to PowerQuest Corporation. PowerQuest, PartitionMagic, BootMagic, and SmartSector are registered trademarks of PowerQuest Corporation in the United States and elsewhere; ServerMagic is a trademark of PowerQuest Corporation. DOS, Microsoft, Windows, and Windows NT are registered trademarks of Microsoft Corporation. IBM and OS/2 are trademarks or registered trademarks of International Business Machines Corporation. Norton Utilities and AntiVirus are trademarks of Symantec Corporation. All other brand and product names are trademarks or registered trademarks of the respective owners.

**PowerQuest Corporation**  
P.O. Box 1911 • Orem, Utah 84059-1911 • U.S.A.

## PowerQuest® Computer-Specific License Agreement

IMPORTANT: Read this before using your copy of PowerQuest software.

This document is a legal agreement between you (an individual or business) and PowerQuest Corporation (PowerQuest). Use of the enclosed software indicates your acceptance of these terms. As used in this License Agreement, the term "Software" means the software included on the CD or disk media provided with this License Agreement. The term "Software" does not include any software that is covered by a separate license offered or granted by a person other than PowerQuest.

IF YOU DO NOT AGREE TO THESE TERMS AND CONDITIONS, EITHER DESTROY OR RETURN, INTACT, THE SOFTWARE PACKAGE, CONTAINING THE CD OR DISK MEDIA, TOGETHER WITH THE OTHER COMPONENTS OF THE PRODUCT TO THE PLACE OF PURCHASE FOR A REFUND OF THE PURCHASE PRICE.

1. **PROPRIETARY RIGHTS.** The Software and any accompanying documentation are the proprietary products of PowerQuest or its licensors and are protected under international laws and international treaty provisions. Ownership of the Software and all copies, modifications, translations, and merged portions thereof shall at all times remain with PowerQuest or its licensors.

2. **GRANT OF LICENSE.** The Software and accompanying documentation are being licensed to you, which means you have the right to use the Software only in accordance with this License Agreement. The Software is considered in use on a computer when it is loaded into temporary memory or installed into permanent memory. This License may not be assigned or otherwise transferred without prior written consent from PowerQuest, and any unauthorized transfer is null and void.

**PERSONAL LICENSE.** This license is personal to you. You may not sublicense, lease, sell, or otherwise transfer the Software or any of the accompanying documentation to any other person. You may use the Software only for your own personal use if you are an individual, or for your own internal business purposes if you are a business.

**COMPUTER-SPECIFIC LICENSE.** Each permitted copy of the Software may be used only in connection with hard drives that are permanently connected to ONE specific computer (either a stand-alone computer or a computer connected to a network) owned or leased by you. Once a copy of the Software has been used on a computer, it may not be used on any other computer. If the Software is made available on a network, it may be accessed only by ONE specific computer. Once the Software has been accessed by ONE specific computer it may not be used on any additional computers without purchasing additional licenses.

**NUMBER OF COPIES LICENSED.** If you have not purchased a license that authorizes use of the Software on multiple computers or by multiple individuals, then you are authorized to use ONLY a single copy of the Software on a single computer. Only ONE copy of the Software may be created for archival or backup purposes. All copies of the Software must include the PowerQuest copyright notice and other legal notices.

**UPDATES AND SUPPORT.** You are entitled to receive complimentary technical support as outlined in the Software documentation. You are entitled to receive Software updates (updates are indicated by version number changes to the right side of the decimal) in accordance with PowerQuest policies as announced from time to time on terms comparable to those offered to other users of the Software under the single-user license.

**TERM.** This license is effective from your date of purchase and shall remain in force until terminated. You may terminate the license and this License Agreement at any time by destroying the Software and the accompanying documentation, together with all copies in any form.

3. **NONPERMITTED USES.** Without the express prior written permission of PowerQuest, you may not (a) use, copy, modify, alter or transfer, electronically or otherwise, the Software or documentation except as expressly permitted in this License Agreement, or (b) translate, reverse program, disassemble, decompile, or otherwise reverse engineer the Software.

4. **EXPORT CONTROLS.** Certain uses of the Software by you may be subject to restrictions under U.S. regulations relating to exports and ultimate end uses of computer software. You agree to fully comply with all applicable U.S. laws and regulations, including but not limited to the Export Administration Act of 1979 as amended from time to time and any regulations promulgated thereunder.

5. **U.S. GOVERNMENT RESTRICTED RIGHTS.** If you are acquiring the Software on behalf of any unit or agency of the United States Government, the following provision applies: It is acknowledged that the Software and the documentation were developed at private expense and that no part is in the public domain and that the Software and documentation are provided with RESTRICTED RIGHTS. Use, duplication, or disclosure by the Government is subject to restrictions as set forth in subparagraph (c)(1)(ii) of the Rights in Technical Data and Computer Software clause at DFARS 252.227-7013 or subparagraphs (c)(1) and (2) of the Commercial Computer Software-Restricted Rights at 48 CFR 52.227-19, as applicable. Contractor/Manufacturer is PowerQuest Corporation/P.O. Box 1911/Orem, UT 84059-1911/U.S.A.

**6. LIMITED WARRANTY.** (a) PowerQuest warrants to you, the original end user, (i) that the Software, other than third-party software, will perform substantially in accordance with the accompanying documentation and (ii) that the Software is properly recorded on the disk media. This Limited Warranty extends for ninety (90) days from the date of purchase. PowerQuest does not warrant any third-party software that is provided with the Software, but PowerQuest agrees to pass on to you any warranties of the owner or licensor to the extent permitted by the owner or licensor. (b) This Limited Warranty does not apply to any Software that has been altered, damaged, abused, mis-applied, or used other than in accordance with this license and any instructions included on the Software and the accompanying documentation. (c) PowerQuest's entire liability and your exclusive remedy under this Limited Warranty shall be the repair or replacement of any Software that fails to conform to this Limited Warranty or, at PowerQuest's option, return of the price paid for the Software. PowerQuest shall have no liability under this Limited Warranty unless the Software is returned to PowerQuest or its authorized representative, with a copy of your receipt, within the warranty period. Any replacement Software will be warranted for the remainder of the original warranty period or 30 days, whichever is longer. (d) THIS WARRANTY IS IN LIEU OF AND EXCLUDES ALL OTHER WARRANTIES NOT EXPRESSLY SET FORTH HEREIN, WHETHER EXPRESS OR IMPLIED, INCLUDING BUT NOT LIMITED TO ANY WARRANTIES OF MERCHANTABILITY, FITNESS FOR A PARTICULAR PURPOSE, NON-INFRINGEMENT, OR WARRANTIES ARISING FROM USAGE OF TRADE OR COURSE OF DEALING. (e) THIS WARRANTY GIVES YOU SPECIFIC LEGAL RIGHTS; YOU MAY HAVE OTHERS WHICH VARY FROM STATE TO STATE. (f) Your failure to return the enclosed registration card or complete the electronic registration included with the Software may result in PowerQuest's inability to provide you with updates to the Software, and you assume the entire risk of performance and result in such an event.

**7. LIMITATION OF LIABILITY.** IN NO EVENT SHALL POWERQUEST'S LIABILITY RELATED TO ANY OF THE SOFTWARE EXCEED THE LICENSE FEES ACTUALLY PAID BY YOU FOR THE SOFTWARE. EXCEPT FOR A RETURN OF THE PURCHASE PRICE UNDER THE CIRCUMSTANCES PROVIDED UNDER THE LIMITED WARRANTY, NEITHER POWERQUEST NOR ITS SUPPLIERS SHALL IN ANY EVENT BE LIABLE FOR ANY DAMAGES WHATSOEVER ARISING OUT OF OR RELATED TO THE USE OF OR INABILITY TO USE THE SOFTWARE, INCLUDING BUT NOT LIMITED TO DIRECT, INDIRECT, SPECIAL, INCIDENTAL, OR CONSEQUENTIAL DAMAGES, AND DAMAGES FOR LOSS OF BUSINESS PROFITS, BUSINESS INTERRUPTION, LOSS OF BUSINESS INFORMATION, OR OTHER PECUNIARY LOSS, EVEN IF POWERQUEST CORPORATION HAS BEEN ADVISED OF THE POSSIBILITY OF SUCH DAMAGES, WHETHER SUCH LIABILITY IS BASED ON CONTRACT, TORT, WARRANTY, OR ANY OTHER LEGAL OR EQUITABLE GROUNDS. BECAUSE SOME STATES DO NOT ALLOW THE EXCLUSION OR LIMITATION OF LIABILITY FOR CONSEQUENTIAL OR INCIDENTAL DAMAGES, THE ABOVE LIMITATION MAY NOT APPLY TO YOU.

**8. NO WAIVER.** Any failure by either party to this agreement to enforce a specific part of the agreement in a specific situation is not a waiver of rights under the agreement. The party may still enforce the rest of the agreement in that situation and may still enforce some or all of the agreement in other situations.

9. This License Agreement constitutes the entire agreement between you and PowerQuest pertaining to its subject matter. This License Agreement is governed by the laws of the State of Utah. Any litigation arising from this license will be pursued only in the state or federal courts located in the State of Utah. Even if part of the agreement is held invalid, the rest of the agreement is still valid, binding and enforceable.

Should you have any questions concerning this Agreement, or if you desire to contact PowerQuest Corporation for any reason, please write: PowerQuest Corporation/P.O. Box 1911/Orem, UT 84059-1911/U.S.A.

Copyright 1994-2000, PowerQuest Corporation. All rights reserved. The Software may be protected by U.S. patents, with other patents pending in the U.S.A. and elsewhere. PowerQuest is a registered trademark of PowerQuest Corporation.

# Table of Contents

About This Guide .....	1
<b>Introduction</b>	
What Is PartitionMagic? .....	3
New Features .....	4
<b>Chapter 1: Getting Started</b>	
PartitionMagic System Requirements .....	6
Installing PartitionMagic under Windows .....	6
Creating Rescue Disks .....	7
Before Running PartitionMagic .....	8
Running PartitionMagic .....	8
Running PartitionMagic from Rescue Disks .....	9
Running a Script from the Rescue Disks .....	10
Running PartitionMagic Inside Windows Explorer .....	10
Running PartitionMagic from My Computer .....	11
Setting a Password for PartitionMagic .....	11
Entering a Password .....	12
Changing a Password .....	12
Uninstalling PartitionMagic .....	12
<b>Chapter 2: PartitionMagic Basics</b>	
The PartitionMagic Main Window .....	14
Partition Information .....	14
Wizards .....	16
Rescue Disk Main Window .....	16
Process Overview .....	17
Selecting a Hard Disk .....	18
Using PartitionMagic with Removable Media .....	18
Windows 2000 Disks .....	18
Selecting a Partition .....	18
Selecting an Operation .....	19
Undoing an Operation .....	19
Viewing Pending Operations .....	19

Applying Changes to Your System .....	20
Supported File Systems .....	21
Changing PartitionMagic Preferences .....	23
Allow 64K FAT Clusters for Windows NT/Windows 2000 .....	23
Ignore OS/2 EA Errors on FAT .....	24
Skip Bad Sector Checks .....	24
Set as Read-Only for PartitionMagic .....	24
Using International Keyboards .....	25
Getting Help .....	25
Context-Sensitive Help .....	26
README File .....	26

### **Chapter 3: Managing Partitions**

Integrity Checks .....	28
Resizing and Moving Partitions .....	28
Notes about Resizing Partitions .....	31
Scenario 1: Adding Free Space to a Logical Partition .....	32
Scenario 2: Adding Free Space to a Primary Partition .....	33
Creating Partitions .....	33
Managing Drive Letter Changes .....	36
Creating Bootable Partitions .....	36
Installing a New Operating System .....	38
Scenario 1: Creating a Primary Partition for Windows NT .....	39
Scenario 2: Creating a Logical Partition on a Secondary Hard Disk .....	40
Scenario 3: Creating Linux Logical Partitions .....	41
Deleting Partitions .....	43
Undeleting Partitions .....	44
Restrictions on Undeleting Partitions .....	45
Changing Partition Labels .....	45
Formatting Partitions .....	46
Copying Partitions .....	47
Checking Partitions for Errors .....	48
Merging Partitions .....	50
Splitting Partitions .....	52
Getting Information About Partitions .....	54
Usage .....	55

Cluster Waste .....	55
Partition Info .....	55
File System-Specific Info Pages .....	56
Scanning a Disk for Errors .....	58

## **Chapter 4: Completing Advanced Disk Operations**

Changing a Drive Letter .....	62
Retesting Bad Sectors .....	62
Hiding and Unhiding Partitions .....	63
Resizing the Root Directory .....	64
Setting an Active Partition .....	65
Resizing Clusters .....	66
Default Cluster Sizes .....	68

## **Chapter 5: Converting Partitions**

Procedure for Converting Partitions .....	72
Converting FAT Partitions to FAT32 .....	73
Converting FAT Partitions to HPFS .....	73
Converting FAT Partitions to NTFS .....	75
Converting FAT32 Partitions to FAT .....	75
Converting FAT32 to NTFS .....	76
Converting NTFS Partitions to FAT or FAT32 .....	76
Restrictions on Converting NTFS Partitions to FAT or FAT32 .....	77
NTFS Information Lost When Converting to FAT or FAT32 .....	77
Converting Partitions to Logical or Primary .....	79

## **Chapter 6: Automating Tasks**

Wizard Overview .....	82
Running Wizards .....	82
Applying Changes .....	82
Create New Partition Wizard .....	82
Resize Partitions Wizard .....	83
Redistribute Free Space Wizard .....	83
Merge Partitions Wizard .....	84
Copy Partition Wizard .....	84
Hiding Wizard Icons .....	84
Scripting .....	84

## **Chapter 7: Remote Agent**

Remote Agent Overview .....	86
Three-Step Process .....	86
Creating Remote Agent Boot Disks .....	87
Boot Disk Builder .....	87
Boot Disk Files .....	91
Using the Remote Agent Boot Disk .....	91
Specifying the IP Address of the Remote machine .....	91
Accessing a Remote Machine .....	92

## **Chapter 8: Using PartitionMagic Utilities**

Changing Drive Letter References with DriveMapper .....	94
Using DriveMapper With Multiple Operating Systems .....	94
Changing Drive Letters in the Correct Order .....	95
Changing Bootable Partitions with PQBoot .....	95
PQBoot Command Line Switches .....	96

## **Chapter 9: Using BootMagic**

Getting Started .....	98
BootMagic System Requirements .....	98
Supported Operating Systems .....	99
Installing BootMagic .....	99
Creating a BootMagic Rescue Disk .....	100
Getting Help .....	100
Configuring BootMagic .....	101
Setting BootMagic Passwords .....	102
Adding an Operating System to the BootMagic Menu .....	102
Removing an Item from the BootMagic Menu .....	104
Modifying a Menu Item's Properties .....	104
Setting a Default Operating System .....	104
Setting the Startup Delay .....	105
Disabling BootMagic .....	105
Using the BootMagic Menu .....	106
Other BootMagic Options .....	106



## Appendix A: Using PartitionMagic With Other Programs

Norton Utilities	108
Norton Disk Doctor	108
Norton AntiVirus	109
Norton SystemWorks	109
Disk Compression Utilities	109
DriveSpace and DriveSpace 3	109
Operating System Boot Utilities	110
Virus Protection Software	110
Drive Overlay Programs	111
SoundBlaster	111

## Appendix B: Troubleshooting

General Troubleshooting	114
Freeing Memory to Run PartitionMagic under DOS	114
Assigning a CD-ROM Drive Letter	115
Using PartitionMagic With a SCSI Hard Disk	117
PqRP Partitions	117
Resolving Check Errors	117
Resolving Partition Table Errors	118
Partition Tables and Viruses	118
Partition Will Not Boot After Resizing	119
Generating Diagnostic Reports with PartitionInfo	119
Generating Diagnostic Reports with PARTINFO.EXE	121
Error Messages and Solutions	121
Miscellaneous Errors (3–38)	122
Disk Access Errors (40–56)	123
Miscellaneous Errors	124
Partition Table Errors (100–199)	125
Networking Errors (200–299)	128
Check Errors (500–599)	130
Batch Errors (600–633)	131
User Interaction Errors (950–999)	132
NTFS Check Errors (1500–1699)	135
FAT Check Errors (2000–2099)	138
BootMagic Errors (8000–8999)	139

Operating System Errors (over 10,000) ..... 140

**Appendix C: PowerQuest Technical Support**

Before Contacting Technical Support ..... 142

    Tips ..... 142

Term of Technical Support ..... 142

Contact Information ..... 142

    Corporate Web Site ..... 142

    E-mail ..... 143

    Fax ..... 143

    Telephone ..... 144

    Postal Service Mail ..... 144

**Index**

## About This Guide

This user guide can help you set up and use PowerQuest® PartitionMagic®.

The PartitionMagic CD includes a searchable PDF version of this manual in the English/Docs folder. The filename is PM6.PDF. PowerQuest recommends that you have Adobe® Acrobat® version 4.0 or later for best viewing quality. You can download the current version of Acrobat for free from the Adobe web site, [www.adobe.com](http://www.adobe.com). In the PDF version of this manual, you can click cross-references (including page numbers in the table of contents and index) to jump to the relevant material. You can also click references to web sites to start your browser and go to the web site. The hand pointer in Acrobat changes to a pointing finger when it is located over text that is linked to other material.

The user guide consists of the following sections:

- The **Introduction** provides an overview of PartitionMagic and includes a list of features that are new for version 6.0.
- **Chapter 1: Getting Started** includes system requirements, step-by-step instructions for installing and starting PartitionMagic, and information for system administrators.
- **Chapter 2: PartitionMagic Basics** includes a description of the main window, an overview of the process you use for making changes with PartitionMagic, and steps for tasks that are common to all PartitionMagic operations.
- **Chapter 3: Managing Partitions** provides information about and step-by-step instructions for the commands on the Operations menu.
- **Chapter 4: Completing Advanced Operations** explains how to use advanced partitioning operations, such as setting an active partition and resizing clusters.
- **Chapter 5: Converting Partitions** provides step-by-step instructions on converting from one file system to another, for example, converting FAT to FAT32.
- **Chapter 6: Automating Tasks** explains the wizards you can use to perform some common tasks and includes an overview of PartitionMagic scripting.
- **Chapter 7: Remote Agent** explains how you can perform PartitionMagic operations across the wire to a remote workstation. (*PartitionMagic Pro only*)
- **Chapter 8: Using PartitionMagic Utilities** explains how to use the DriveMapper and PQBoot utilities that are included on the PartitionMagic CD.
- **Chapter 9: Using BootMagic** explains how to use BootMagic run several operating systems on the same machine.

- **Appendix A: Using PartitionMagic with Other Programs** provides information about using PartitionMagic with programs such as disk compression utilities and virus protection software.
- **Appendix B: Troubleshooting** provides answers to problems you may encounter while using PartitionMagic and describes error messages and their solutions.
- **Appendix C: PowerQuest Technical Support** provides information on various technical support options.
- The **Index** helps you locate topics discussed in the user guide.

# Introduction

## What Is PartitionMagic?

With PartitionMagic, you can quickly and easily create partitions on your hard disks for storing valuable information such as data files, applications, and operating systems. Storing information in separate partitions helps you organize and protect your data and reclaim wasted disk space.

PartitionMagic enables you to secure your data by physically separating it from other files. Separate partitions also make backups easy.

PartitionMagic helps you reliably run multiple operating systems on the same computer. PartitionMagic also includes BootMagic, a powerful boot manager that helps you safely install new operating systems and lets you choose which operating system you want to use when starting your computer.

Because of limitations with the FAT file system, as much as 40 percent of your hard disk space can be wasted. PartitionMagic reclaims wasted space quickly and safely by using more efficient partition sizes. It can also convert FAT partitions to FAT32 and vice versa.

In addition to powerful partitioning features, PartitionMagic offers a variety of other options. For instance, you can perform partitioning operations and view the changes that will be made before applying them to your system. Additionally, you can view comprehensive information about your hard disk geometry and your hardware system, and you can resize root directories (FAT, FAT32) to make room for more long filenames.

## **New Features**

PowerQuest PartitionMagic 6.0 includes the following new features:

- New user interface
- Ability to undelete partitions
- Across-the-wire support for performing some operations on a remote machine (*PartitionMagic Pro only*)
- New Copy Partition wizard
- Ability to view and modify a list of pending operations
- Ability to convert FAT32 partitions directly to NTFS (Windows 2000 only)
- Support for Windows 2000 Professional and Windows Me
- Ability to split a FAT or FAT32 partition

# Getting Started

*This chapter includes the following information:*

- PartitionMagic System Requirements
- Installing PartitionMagic under Windows
- Creating Rescue Disks
- Before Running PartitionMagic
- Running PartitionMagic
- Running a Script from the Rescue Disks
- Running PartitionMagic Inside Windows Explorer
- Running PartitionMagic from My Computer
- Setting a Password for PartitionMagic
- Uninstalling PartitionMagic

## PartitionMagic System Requirements

PartitionMagic for Windows requires a minimum of 54 MB of hard disk space, a CD-ROM drive (any speed), a 3.5-inch floppy drive, and processor and memory requirements as shown below.

Operating System	Minimum RAM	Processor
Windows 95/98	32 MB	486 or compatible
Windows Me	32 MB	Pentium/150 MHz or compatible
Windows NT 4.0 Workstation with SP4 applied	32 MB	486/33 or compatible
Windows 2000 Professional	64 MB	Pentium/133 MHz or compatible

The rescue disk version of PartitionMagic requires a 486DX/33 MHz processor (or faster), 8 MB of RAM (16 MB for NTFS partitions; 32 MB recommended for FAT32 partitions; some very large partitions may require up to 64 MB), a 3.5-inch floppy drive.

## Installing PartitionMagic under Windows

**IMPORTANT!** PartitionMagic must be installed on a local drive, not on a network drive.

- 1 Insert the PartitionMagic CD into your CD-ROM drive.
- 2 If the installation program does not start automatically, click **Start ► Run** on the Windows taskbar.
- 3 Type *drive*:\AUTORUN, where *drive* is the drive letter of your CD-ROM drive.
- 4 Click **Install**, and follow the on-screen installation instructions.

You will have an option to install BootMagic<sup>®</sup> in addition to PartitionMagic. If you have multiple operating systems installed, you can use BootMagic to choose from installed operating systems each time you boot.



## Creating Rescue Disks

You can create rescue disks from the PartitionMagic CD to run PartitionMagic from DOS, Windows 3.x, OS/2, or Linux machines. You can also create rescue disks under Windows.

Rescue disks are useful when:

- You want to run PartitionMagic, but you do not have an operating system that is supported by the Windows version of the software.
- You have hidden the partition where PartitionMagic is installed and need to run PartitionMagic to unhide the partition.
- You have accidentally converted a partition to FAT32 and your operating system does not support FAT32, so your computer will not boot. (You can use the rescue disks to convert the partition back to FAT.)
- Other occasions arise when you do not have access to PartitionMagic on the CD or hard drive.

You must have two blank 1.44 MB floppy disks available before you begin this procedure (three disks for double-byte languages).

**1** You can create rescue disks three ways:

<b>To create rescue disks from:</b>	<b>Do this:</b>
-------------------------------------	-----------------

---

PartitionMagic CD (useful if you do not have Windows)

- 1a** Open the DOS-OS2 folder on the PartitionMagic CD.
- 1b** Type `MAKEDISK A:`, where A: is the drive letter for your floppy disk drive.

You can also install the DOS version of PartitionMagic to your hard disk using this process. If you install to your hard disk, the PartitionMagic files (but not the system files) will be installed to a PQMAGIC directory at the root of the disk, and you will not need floppy disks.

PartitionMagic main window

Click **Tools** ► **Create Rescue Disks** on the menu bar.

Windows

Click **Start** ► **Programs** ► **PowerQuest PartitionMagic 6.0** ► **Create Rescue Disks**.

**2** Insert a blank formatted 1.44 MB disk into your 3.5-inch disk drive and click **OK**.

- 3 Follow the prompts and the instructions on the progress bar (located at the bottom of the window).

The rescue disks contain the following files:

<b>PartitionMagic 6.0 Disk 1</b>	<b>PartitionMagic 6.0 Disk 2</b>
<ul style="list-style-type: none"><li>• Autoexe2.bat</li><li>• Autoexec.bat</li><li>• CHKDSK.exe</li><li>• Command.com</li><li>• Partinfo.exe (utility program)</li><li>• PTEDIT (utility program)</li><li>• Keyb.com</li><li>• Mode.com</li><li>• MSCDEX.exe</li><li>• Miscellaneous system files</li></ul>	<ul style="list-style-type: none"><li>• Autoexec.bat</li><li>• Mouse.com</li><li>• PMHelp.dat (help file)</li><li>• PQMagic.exe</li><li>• PQMagic.ovl</li><li>• PQMagic.pqq</li><li>• PQPB.rtc</li><li>• Rescue.txt</li></ul>

If you create rescue disks for a double-byte language, the third disk includes fonts.

## Before Running PartitionMagic

You should back up your hard disk before using PartitionMagic. While PartitionMagic has been thoroughly tested and is safe and reliable, other factors, (such as power failures, operating system bugs, and hardware defects), can put your data at risk. Before using *any* utility that makes extensive changes to your hard disk, you should back up your data.

PartitionMagic cannot run while other low-level disk utilities are running. Close all such utilities prior to starting PartitionMagic.

It is wise to run a file check before running PartitionMagic. Doing so can help you avoid problems.

Verify that the version of PartitionMagic you are running is supported on the operating system (and Service Pack, if applicable) you are running. See “PartitionMagic System Requirements” on page 6.

## Running PartitionMagic

**IMPORTANT!** PartitionMagic must be run from a local, uncompressed drive. You cannot run PartitionMagic from a network drive.

You can run PartitionMagic from Windows 95, Windows 98, Windows Me, Windows NT 4.0 Workstation, or Windows 2000 Professional. Under any other operating system, you must run PartitionMagic from the rescue disks.

**1 Click Start ► Programs ► PowerQuest PartitionMagic ► PartitionMagic 6.0.**

### ***Running PartitionMagic from Rescue Disks***

When you boot your computer from the first rescue disk, PQMAGIC automatically runs. You must insert the second rescue disk when prompted.

**Create Rescue Disks** is a wizard that helps you create diskettes you can use to boot your computer and run PartitionMagic for DOS (PQMAGIC).

### **Preparation**

Before you run PartitionMagic from the rescue disks, you should:

- Turn off third-party disk caches.
- Deactivate/unload any TSR programs that access or modify partitions being changed.

You cannot run PartitionMagic on a Windows 2000 Professional or Windows Me machine that is in hibernation. To use the rescue diskette, Windows 2000 or Windows Me must have been shut down normally.

### **Rescue Disk Limitations**

The following features are not available when you run PartitionMagic from the rescue disks.

- Remote Agent (across the wire)
- Split partitions
- Shred partitions
- Undelete partitions
- Undo last change
- Wizards

If you run out of space on the first rescue disk as a result of adding network, SCSI, or CD-ROM drivers to your boot sequence, you can delete the following files from the disk: `chkdsk.com`, `fdisk.exe`, `ptedit.exe`, and `partinfo.exe`. We recommend that you delete the files in that order, freeing up only the space that you need to accommodate additional files. These files are included in the Utilities folder on the PartitionMagic CD where you can access them later, if necessary.

If you use an international keyboard or character set, you will need to modify the AUTOEXE2.BAT and CONFIG.SYS files on the rescue disks. Refer to “Using International Keyboards” on page 25 for additional information.

Checking an NTFS partition with the rescue disk version of PartitionMagic may take an unusually long time. Since PartitionMagic performs checks both before and after the move, copy, and resize operations, these operations may be slower with the rescue disk version of PartitionMagic than with the Windows version.

## Running a Script from the Rescue Disks

If you have PartitionMagic Pro, you can modify the rescue disks to run PartitionMagic with a script file automatically.

- 1 Open the AUTOEXEC.BAT file on **PartitionMagic 6.0 Disk 1**.
- 2 Edit the line that includes PQMAGIC as follows, where SCRIPT.TXT is the name of the script file you want to execute:

```
PQMAGIC /CMD=SCRIPT.TXT
```

**IMPORTANT!** Do not include a hard return at the end of the line that includes the PQMAGIC command. Do not make any other modifications to the AUTOEXEC.BAT file.

- 3 Save the AUTOEXEC.BAT file.
- 4 Copy the AUTOEXEC.BAT file to **PartitionMagic 6.0 Disk 2**.

The file must be identical on both disks, or PartitionMagic will not function properly.

When you boot from the first disk, PartitionMagic will execute the script file you specified. For additional information about scripting, refer to PartitionMagic help.

## Running PartitionMagic Inside Windows Explorer

- 1 From Windows, click **Start ► Programs ► Windows Explorer**.

The Exploring window appears.

- 2 Right-click on any drive object.

A quick menu appears.

### 3 Click **PartitionMagic 6.0**.

The program loads, and the PartitionMagic main window appears.

## Running PartitionMagic from My Computer

### 1 Double-click on the **My Computer** icon.

The My Computer menu appears.

### 2 Right-click on any drive object.

A quick menu appears.

### 3 Click **PartitionMagic 6.0**.

The program loads, and the PartitionMagic main window appears.

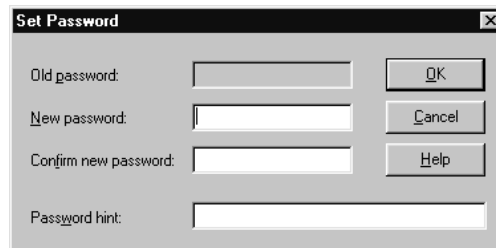
You can also right-click on the **My Computer** icon to access the quick menu.

## Setting a Password for PartitionMagic

You can assign a password that must be entered before PartitionMagic will start.

### 1 Click **General ► Set Password**.

The **Set Password** dialog box appears.



The screenshot shows a standard Windows-style dialog box titled "Set Password". It features a title bar with a close button (X) on the right. The dialog contains four text input fields arranged vertically. To the right of the first three fields are buttons labeled "OK", "Cancel", and "Help".

Old password:	<input type="text"/>	<input type="button" value="OK"/>
New password:	<input type="text"/>	<input type="button" value="Cancel"/>
Confirm new password:	<input type="text"/>	<input type="button" value="Help"/>
Password hint:	<input type="text"/>	

### 2 Type a new password, then press <Tab>.

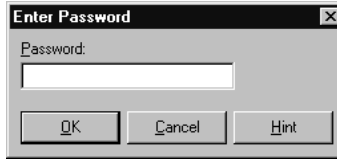
### 3 Confirm the new password, then press <Tab>.

### 4 (Optional) Add a hint.

### 5 Click **OK**.

## Entering a Password

When you start PartitionMagic and there is a password assigned, the **Enter Password** dialog appears.



- 1 Type the password assigned to PartitionMagic.  
You can click **Hint** to display a reminder.

- 2 Click **OK**.

## Changing a Password

- 1 Click **General** ► **Set Password**.
- 2 Type the old password, then press <Tab>.
- 3 Type the new password, then press <Tab>.  
To remove password protection, leave the new password fields blank.
- 4 Confirm the new password, then press <Tab>.
- 5 *(Optional)* Change the hint.
- 6 Click **OK**.

## Uninstalling PartitionMagic

- 1 On the Windows taskbar, click **Start** ► **Settings** ► **Control Panel**.
- 2 Double-click **Add/Remove Programs**.
- 3 Select **PartitionMagic 6.0**.
- 4 Click **Add/Remove**.

## **PartitionMagic Basics**

*This chapter includes the following information:*

- The PartitionMagic Main Window
- Process Overview
- Selecting a Hard Disk
- Selecting a Partition
- Selecting an Operation
- Undoing an Operation
- Applying Changes to Your System
- Supported File Systems
- Changing PartitionMagic Preferences
- Using International Keyboards
- Getting Help

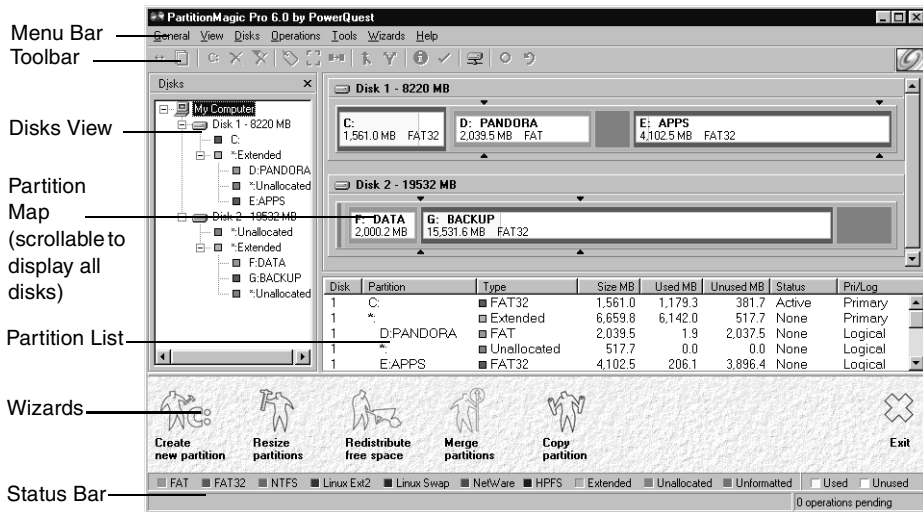
# The PartitionMagic Main Window

The main window includes an Explorer-like tree view of the disks on your computer, a map of each disk, and a list of the partitions on the selected disk.

The menu bar and a toolbar appear at the top of the window. The menu bar gives you access to all of PartitionMagic’s features. When you choose a menu command, the status bar at the bottom of the screen shows what the command does. The toolbar gives you quick access to commonly used options. When the pointer is over a toolbar, the status bar shows what the button does.

You can toggle the view of the toolbar, tree view, wizard buttons, legend, and scaled disk map by clicking commands on the **View** menu.

Note that the main screen is different if you run PartitionMagic from the rescue disks. “Rescue Disk Main Window” on page 16.



## Partition Information

The partition area displays information about the selected hard disk’s partitions. It consists of two areas: the partition map, which displays information graphically; and the partition list, which displays partition information in text form.



## Partition Map

The partition map shows the partitions approximately to scale. (You can also display disks to scale by clicking **View ► Scale Disk Map**.) Each partition is represented by a different color according to the file system it uses. If the selected hard disk contains logical partitions, the logical partitions are shown within an extended partition.

Each partition is color-coded to show the file system it uses and the used and unused space within the partition. Note that the operations you can perform on white (unformatted) or yellow (unknown) partitions are limited. A key at the bottom of the screen shows which file system each color represents.

The partition map also shows unallocated space (space not assigned to any partition).

There are triangle indicators to mark the 2 GB boot boundary and the 1024 cylinder limit. The boundary markers can help you as you create, move, or resize partitions, so you will not make primary partitions unbootable by accident. For additional information about the boot boundaries, refer to “Understanding the BIOS 1024 Cylinder Limit” or “Understanding the 2 GB Boot Code Boundary” in the PartitionMagic online help.

## Partition List

The partition list displays the following information about each partition: drive letter, volume label, file system type, size, amount of used and unused space in megabytes, status, and whether the partition is a primary or logical partition.

Primary partition drive letters are flush left, followed by a colon and the volume name. Logical partition drive letters and volume labels are indented. An asterisk (\*) appears in place of a drive letter for:

- Hidden partitions
- Extended partitions
- Partitions with file systems not supported by the active operating system
- Unallocated space

A partition’s status can be:

- **Active:** The partition the computer boots from.
- **Hidden:** Partitions that do not have a drive letter. Partitions can be hidden by the operating system (which may hide all primary partitions except the active one), or you can hide partitions with PartitionMagic. Under Windows 2000 Professional, hidden partitions are permitted to have a drive letter.
- **None:** Partitions that are not active or hidden.

## **Wizards**

To help you quickly and easily complete several common partitioning tasks, PartitionMagic includes these wizards:

- Create new partition
- Redistribute free space
- Resize partitions
- Merge partitions
- Copy partition

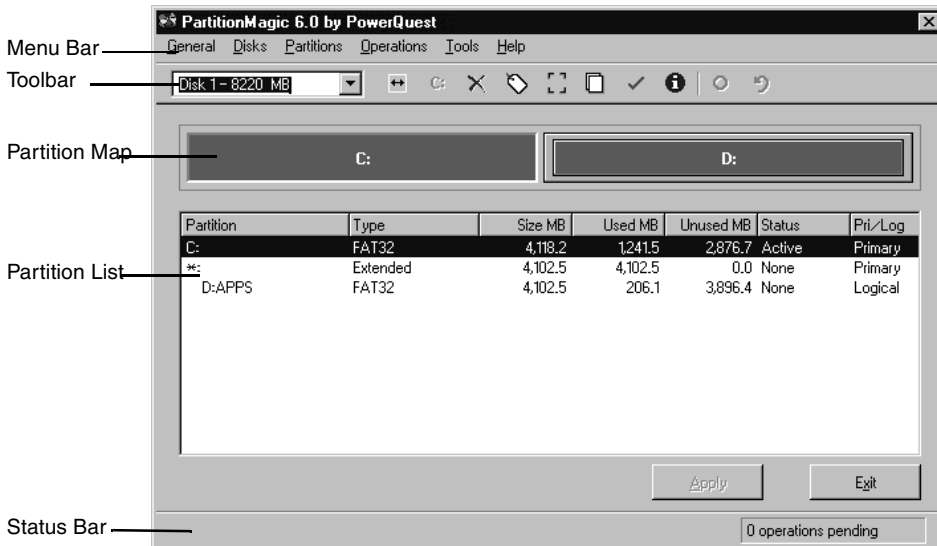
To start a wizard, click the wizard icon or choose a command on the **Wizards** menu. For more information about using the wizards, see “Wizard Overview” on page 82.

You do not have access to the wizards if you run PartitionMagic from the rescue disks.

## **Rescue Disk Main Window**

The main screen appears different when you run from rescue disks than it does when you run PartitionMagic from Windows.

- **Menu bar** — gives you access to all of PartitionMagic’s features.
- **Toolbar** — gives you quick access to commonly used options and allows you to select the disk you want to operate on.
- **Partition information** — provides both a visual and text description of the partitions on the disk.
- **Status bar** — shows you how many operations are pending; also includes a brief description of the currently selected option.



## Process Overview

To complete a task, follow this general process:

- 1 Select a hard disk and partition.

The steps for selecting a hard disk and partition are included in this chapter of the user guide. **You must follow these steps before you can perform any operation within PartitionMagic.**

- 2 Select an operation and enter details about the changes you want to perform.
- 3 Apply changes to your system.

You can also perform some tasks using the wizards. Refer to “Wizard Overview” on page 82 for information about the wizards.

## Selecting a Hard Disk

There are three ways to select a hard disk:

- In the tree view on the left side of the main window, click the icon for the disk.
- On the disk map, click the title bar for the disk. You may need to scroll through the disk map area if you have several hard disks on your machine.
- From the **Disks** menu, choose the disk you want.

When you select a disk, its partitions display in the partition list in the main window.

### ***Using PartitionMagic with Removable Media***

PartitionMagic is not designed to work on removable media. PowerQuest technical support does not guarantee they will be able to resolve problems you encounter when partitioning removable media.

### ***Windows 2000 Disks***

Windows 2000 uses basic disks and dynamic disks. You cannot perform PartitionMagic operations on dynamic disks.

## Selecting a Partition

There are three ways to select a partition:

- In the tree view on the left side of the main window, click the partition. If the tree view is not displayed, click **View ► Tree View**.
- On the disk map, click the partition. You may need to scroll through the disk map area if you have several hard disks on your machine.
- In the partition list, click the partition.

The selected partition is highlighted in all three locations.

*(PartitionMagic Pro only)* If Remote Agent is running, you can select a partition on a remote machine. See “Remote Agent” on page 85.

## Selecting an Operation


After you have selected a disk and a partition, you can select an operation using the toolbar, the context menu, the menu bar, or the keyboard. If an operation cannot be performed on the selected partition, the operation is unavailable (menu item appears dimmed).

- Click one of the operations buttons on the toolbar.  
When you place the pointer on a toolbar button, a pop-up window displays the button's function.
- In the partition map or partition list, right-click the partition you want to change, then click the desired operation from the context menu.
- On the menu bar, click **Operations**, then choose the desired operation.
- Press <Alt+O>, then type the underlined letter of the desired operation.

For more information about the items on the **Operations** menu, see *Chapters 3, 4, and 5* of this user guide.

## Undoing an Operation

There are three ways to undo or reverse the last operation performed:

- Click  on the toolbar.
- Click **General > Undo Last Change** on the menu bar.
- Press <Ctrl+Z>.

If you have performed an operation using a wizard, Undo Last will undo all the changes made by the wizard.

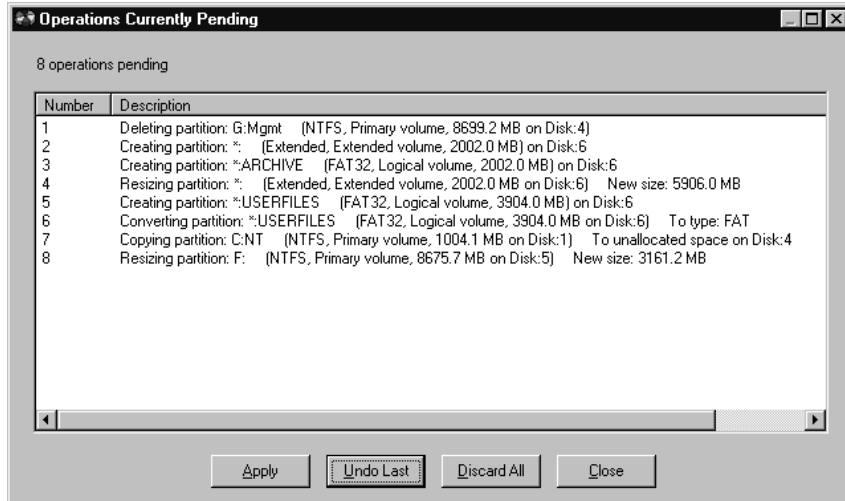
To discard all the changes performed and start over, click **General > Discard all Changes**, or press <Ctrl+D>.

## Viewing Pending Operations

PartitionMagic queues operations until you apply them. You can view the operations that are pending at any time.

- 1 Click **Operations > View Operations Pending**.

The **Operations Currently Pending** dialog appears.




From the list of pending operations, you can choose to undo the last change, discard all changes, apply all changes, or close the window.

If you are running PartitionMagic from the rescue disks, you cannot modify pending operations from this window.

## Applying Changes to Your System

As you complete tasks using the **Operations** menu, the partition map and partition list reflect the changes you have made. However, no changes physically take place on your system until you apply them. You can perform several operations and then apply all the changes at once.

You can tell when changes have been made but not yet applied to your system when the status box in the lower right corner of the main window indicates that operations are pending. If the wizard icons are displayed, the **Apply Changes** and **Undo Last** icons also display at the bottom of the window when there are operations pending.

To apply changes to your system, click **General ► Apply Changes**, or click  on the toolbar. If the wizard icons are displayed, you can also click the **Apply Changes** icon at the bottom of the window. If you have open files, PartitionMagic may need to reboot your computer and apply the changes in boot mode.

You can click **Apply Changes ► Details** to view a list of the operations that will be applied.

To discard the changes and start over, click **General ► Discard All Changes**. With the exception of being able to undelete some partitions, you cannot discard or undo changes after you have applied them.

## Supported File Systems

You can create or modify the following partition types with PartitionMagic. Before making modifications, you should ensure that both the partition type and operating system on your machine are supported by PartitionMagic.

<b>Partition Type</b>	<b>Description</b>
<b>Extended</b>	The extended partition gets around the arbitrary four-partition limit for a disk. An extended partition is a container in which you can further divide your disk space by creating logical partitions. An extended partition does not directly hold data. You must create logical partitions within the extended partition to store data.
<b>Extended X</b>	An extended x partition functions like an extended partition but is not limited to the first 1024 cylinders on a drive.  Linux kernels below 2.2 do not support extended x partitions.
<b>FAT</b>	Uses file allocation table (FAT) and clusters. The FAT file system is used by DOS, Windows 3.x, and most Windows 95 installations. A FAT partition is also accessible by all newer operating systems.
<b>FAT16x</b>	FAT16x is a proprietary file system developed by Microsoft to enable FAT partitions beyond 1024 cylinders (~8GB).

<b>Partition Type</b>	<b>Description</b>
<b>FAT32</b>	<p>FAT32 is an enhancement of the FAT file system. It uses 32-bit file allocation table entries, rather than the 16-bit entries used by the FAT system, so FAT32 supports larger disk or partition sizes (up to 2 terabytes). The minimum size for a FAT32 partition is 256 MB.</p> <p>A FAT32 partition is only accessible by Windows 95 OSR2 (version 4.00.950B), Windows 98, Windows Me, and Windows 2000. DOS, Windows 3.x, Windows NT 3.51/4.0, earlier versions of Windows 95, and OS/2 don't recognize FAT32 and cannot use files on a FAT32 partition.</p>
<b>FAT32x</b>	<p>FAT32x is a proprietary file system developed by Microsoft to enable FAT32 partitions beyond 1024 cylinders (~8GB). Windows 95 OSR2 and later versions of Windows may use FAT32x partitions.</p>
<b>HPFS</b>	<p>The High Performance File System (HPFS) is accessible only by OS/2, older versions of Windows NT (v. 3.51 and earlier), or versions of Windows NT that were upgraded from v. 3.51 or earlier.</p>
<b>HPFS/386</b>	<p>HPFS/386 is a file system used by OS/2 Advanced Server. The only difference from HPFS is that HPFS/386 uses Access Control Lists (ACLs) and HPFS does not. In both file systems, each file and directory structure is anchored on a structure called an fnode. In HPFS/386, each fnode has internal storage space for ACLs and Extended Attributes. If a file has more than 16 ACLs, they are stored outside of the fnode on disk, and the fnode has a pointer telling where to find the ACLs.</p>
<b>Linux Ext2</b>	<p>The Linux Ext2 file system is only accessible by Linux, a freeware version of UNIX. The Linux Ext2 file system supports a maximum partition size of 4 terabytes.</p>
<b>Linux Swap</b>	<p>Holds a Linux swap file. The maximum usable size of a Linux swap file is 128 MB. The default size shown when you create a Linux swap partition may be slightly larger because of the physical geometry on the hard disk.</p>



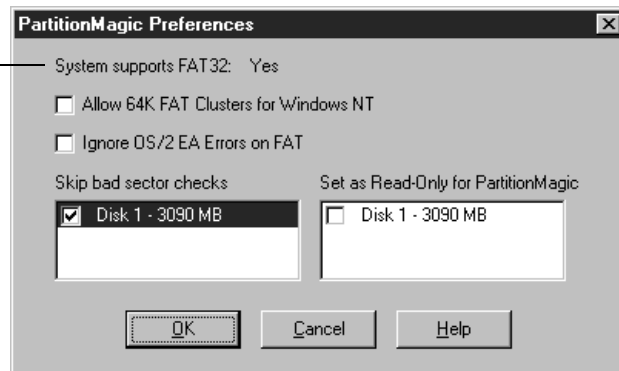
Partition Type	Description
<b>NTFS</b>	The New Technology File System (NTFS) is accessible only by Windows NT and Windows 2000. NTFS is not recommended for use on disks less than 400 MB because it uses a great deal of space for system structures.
<b>Unformatted</b>	Unformatted partitions reserve a portion of the disk but are not assigned a file structure.
<b>Unallocated space</b>	Unallocated space is the portion of a hard disk that is not currently assigned to any partition.

## Changing PartitionMagic Preferences

- 1 In the main window, click **General > Preferences**.

A check mark next to a preference indicates it is enabled.

Indicates whether the current operating system supports FAT32 partitions.



- 2 Click checkboxes to enable or disable preferences, then click **OK**.

### ***Allow 64K FAT Clusters for Windows NT/Windows 2000***

This preference lets you create FAT partitions with 64 KB clusters, which allows you to use PartitionMagic to create FAT partitions up to 4 GB.

**IMPORTANT!** Because DOS, Windows 3.x/95/98/Me do not support cluster sizes larger than 32K, you cannot access a 64K partition using these operating systems. You should only use 64K partitions with Windows NT and Windows 2000. If you are using multiple operating systems, PowerQuest recommends not using 64K clusters.

When enabled, the 64K cluster size is available in the **Resize/Move Partition** and **Resize Clusters** dialogs.

### **Ignore OS/2 EA Errors on FAT**

This preference tells PartitionMagic whether to ignore OS/2 Extended Attribute errors when it checks a FAT partition.

**WARNING!** If OS/2 is on your computer, do not enable this preference. Data loss could occur because problems might go undetected.

### **Skip Bad Sector Checks**

When PartitionMagic modifies partitions, it performs extensive testing to detect bad sectors on your hard disk. Newer disk types (such as Enhanced IDE and SCSI) often handle bad sectors internally, making such testing superfluous. For this reason, PartitionMagic lets you bypass these tests with **Skip Bad Sector Checks**. When this preference is enabled, the Resize/Move, Create, Copy, and Format operations run faster.

**WARNING!** If you skip bad sector checks and your hard disk has bad sectors, data loss can result.

Bad sector checking is on by default. PartitionMagic lets you set this preference individually for each of your hard disks. If your system has an older disk and a newer one, you could check the older disk and skip the newer one. A check mark next to a disk means to skip bad sector checking for that disk.

### **Set as Read-Only for PartitionMagic**

This preference lets you prevent PartitionMagic from making any changes to a hard disk. You can set this preference individually for each of your hard disks.

There are some exceptions to how this preference is applied:

- If the disk contains the boot partition, some files may be changed, such as the Windows NT boot initialization (BOOT.INI) file.
- If you tell PartitionMagic to run DriveMapper automatically, certain files, such as initialization files and shortcut files, may be changed.

## Using International Keyboards

When you use the DOS version of PartitionMagic (see “Running PartitionMagic from Rescue Disks” on page 9), you may lose the ability to use your keyboard the way you are accustomed to or to view extended characters properly. The PartitionMagic rescue disks include the files you need to resolve these problems.

If you use an international keyboard or character set, you must edit the AUTOEXE2.BAT and CONFIG.SYS files on the rescue disks.

- 1 The following lines are remarked in the AUTOEXE2.BAT file. Delete the REM from the beginning of the line, and replace the variables *xx* and *yyy* with the keyboard code and character set code page for your language.

```
MODE CON CP PREP= ( (yyy) EGA . CPI )
MODE CON CP SEL=yyy
KEYB xx, yyy
```

*xx* = two-letter keyboard code (for example, US or FR)  
*yyy* = character set code page (for example, 437)

- 2 Save the AUTOEXE2.BAT file.
- 3 The following line is remarked in the CONFIG.SYS file. Delete the REM from the beginning of the line, and replace the variable *yyy* with the character set code page for your language.

```
DEVICE=DISPLAY . SYS CON= ( EGA, yyy, )
```

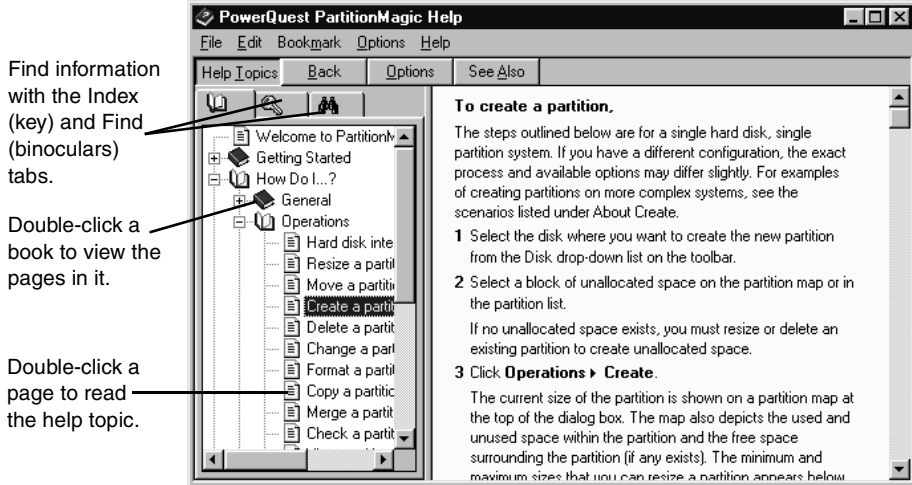
- 4 Save the CONFIG.SYS file.
- 5 Reboot from the first rescue disk.

## Getting Help

PartitionMagic Help provides in-depth information on features as well as step-by-step instructions for specific tasks.

To access Help, click **Help ► Contents** on the menu bar in the PartitionMagic main window.

The **PowerQuest PartitionMagic Help** is organized into books and pages.



Each book focuses on a different aspect of PartitionMagic, so you can quickly locate the information you need. When you double-click a topic, the information displays in the right window.

You can click the key tab to search for a topic using keywords.

### **Context-Sensitive Help**

By clicking **Help** in the lower right corner of a dialog, you can open context-sensitive help for the dialog. Clicking **Hints** in a wizard dialog displays helpful information about the task the wizard is performing.

### **README File**

The READMEPM.TXT file includes information that changed since this guide was written, corrections to the manual or help system, and information specific to installation or configuration issues.

# Managing Partitions

*This chapter includes the following information:*

- Integrity Checks
- Resizing and Moving Partitions
- Creating Partitions
- Deleting Partitions
- Undeleting Partitions
- Changing Partition Labels
- Formatting Partitions
- Copying Partitions
- Checking Partitions for Errors
- Merging Partitions
- Splitting Partitions
- Getting Information About Partitions
- Scanning a Disk for Errors

## Integrity Checks

PartitionMagic checks disk integrity with a sophisticated system of analysis and validation that operates behind the scenes every time you start the program or complete an operation. An initial integrity check scans your disk and reports any partition problems that may prevent PartitionMagic from operating properly. This integrity check acts as an early warning system that informs you of your disk's status and assures that the disk's structure is thoroughly analyzed and verified before you alter it.

If your physical disk passes the initial integrity check, you can select the disk's partitions and use PartitionMagic's options; otherwise, an error message appears instead of the partition list. This indicates a problem with your disk, not with PartitionMagic (because no disk modification operations have been initiated). If PartitionMagic finds errors that it can fix automatically, you will be prompted. It is safe to allow PartitionMagic to fix errors. Correct the disk problem, and then restart PartitionMagic. For additional information, see "Resolving Partition Table Errors" on page 118.

In addition to the integrity check at startup time, PartitionMagic performs two integrity checks during any operation. The first check tests the integrity of the file system in the partition before an operation begins (similar to CHKDSK or ScanDisk), and the second check validates your disk's data after an operation is completed. From start to finish, PartitionMagic examines your disk and informs you immediately if it detects any irregularities.

## Resizing and Moving Partitions

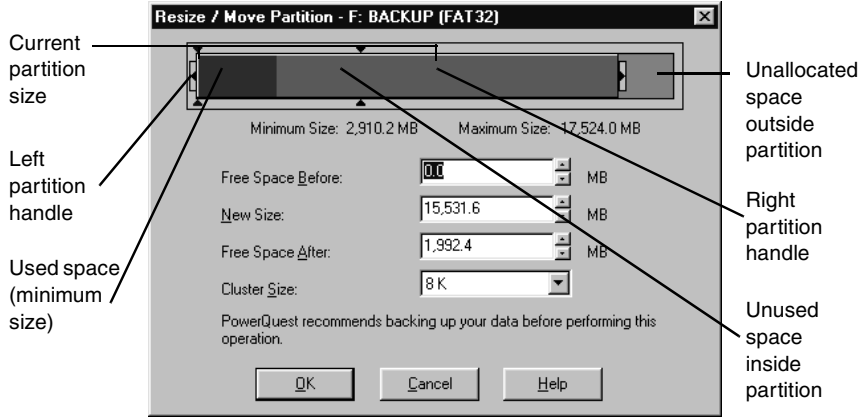
The Resize/Move operation lets you change the size of a partition and/or move it to another location on a hard disk.

- 1 Select the partition you want to resize/move.

You cannot move Windows NT volume or stripe sets with parity created by Disk Administrator.

- 2 Click **Operations** ► **Resize/Move**.

The **Resize/Move Partition** dialog appears.




The current size of the partition is shown on a partition map at the top of the dialog. The map also depicts the used and unused space within the partition and the unallocated space surrounding the partition (if any exists). The minimum and maximum sizes to which you can resize the partition appear below the map.

**3** Choose whether to resize or move the partition.

To do this:	Do this:
-------------	----------

**Move**

- 1 Place the pointer on the partition.

The pointer changes to .

- 2 Drag the partition to the desired location.

There must be unallocated space adjacent to the partition to move it. If there is none, and the partition contains unused space, make the partition smaller and then move the partition.

You cannot move unknown partitions, partitions failing the Check for Errors operation, or unallocated space.

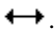
**To do this:**      **Do this:**

---

**Move**  
*(continued)*      Your Windows NT system partition cannot be moved past 4 GB, or Windows NT will not be bootable.

**IMPORTANT!** Exercise caution when moving a bootable partition. Operating systems can become unbootable if moved beyond certain boundaries. For more information, see “Creating Bootable Partitions” on page 36.

**Resize**      **1** Place the pointer on the left or right partition handle.

The pointer changes to .

**2** Drag the handle until the desired partition size is reached.

You can also resize the partition by typing new values in the **Free Space Before**, **New Size**, and **Free Space After** boxes or by clicking the arrows next to the boxes. The values you enter may change slightly to values supported by the drive’s geometry. The arrow buttons resize the partition by the minimum increment, allowing you to make very fine adjustments. Changes are reflected in the partition map.

To make a partition smaller, unused space must exist within the partition. To enlarge a partition, there must be unallocated space adjacent to it. For additional information about resizing partitions, refer to “Notes about Resizing Partitions” below.

**IMPORTANT!** (*Windows NT only*) Resizing your NTFS system partition over 7.8 GB may render your workstation unbootable. If you resize an NTFS system partition over this limit by accident, you can recover your system by using the PartitionMagic rescue disks to resize the NTFS system partition below 7.8 GB.

If you know your disk has no bad sectors, **Skip bad sector checks** in **Preferences** to make Resize and Move operations faster.

**3** (*Optional*) Click the **Cluster Size** drop-down list and select a new size.



PartitionMagic changes the **Free Space Before**, **New Size**, and **Free Space After** values to show how the partition size is affected.

This option is only available for FAT and FAT32 partitions. For more information, see “Resizing Clusters” on page 66.

#### **4** Click **OK**.

### **Notes about Resizing Partitions**

When you resize a partition, data is consolidated, not compressed. To make a partition smaller, unused space must exist within the partition. To enlarge a partition, there must be adjacent unallocated space. If there is unallocated space on the disk, but it is not adjacent to the partition you want to enlarge, adjust the location of the space by moving other partitions.

**IMPORTANT!** Exercise caution when resizing partitions smaller, especially a partition containing an operating system. Leave at least 50 MB more space in the partition than the operating system requires. Swap files, drivers, and other files may require the extra space. Additionally, operating systems can become unbootable if moved beyond certain boundaries. For more information, see “Creating Bootable Partitions” on page 36.

Resizing FAT and FAT32 partitions smaller may reduce the amount of wasted space on a hard disk. When you resize a FAT or FAT32 partition, PartitionMagic automatically resizes the clusters to their optimal size for the partition. For more information, see “Resizing Clusters” on page 66.

You should be aware of the following limitations when resizing partitions:

- You cannot make a partition smaller unless it contains unused space. You can only reduce a partition to the used size shown in the partition map plus a small buffer area. During a Resize/Move operation, data is consolidated to the front of the partition as needed, but no data compression takes place. Because of the way a FAT partition is structured, you can often resize a partition a second time and make it even smaller or larger than the first time you resized it.
- In certain instances, you cannot make a FAT partition larger when the partition contains no unused space. If you have a full partition and plenty of unallocated space adjacent to it, yet are not able to enlarge your partition, you may have to delete some files in the partition so that PartitionMagic has room to work. You may be able to slightly enlarge the partition (1 MB or less) and then enlarge the partition a second time to provide the necessary buffer area for PartitionMagic. To see how much space

is needed in a partition to resize past a cluster boundary, see the table in “Freeing Disk Space Before Enlarging a FAT Partition” in Help.

- It is difficult to calculate in advance the minimum size to which an NTFS or HPFS partition may be resized. If PartitionMagic runs out of space when you are resizing or moving an NTFS or HPFS partition, PartitionMagic returns an error without completing the operation. The integrity of the NTFS or HPFS partition and data is never compromised.

### **Scenario 1: Adding Free Space to a Logical Partition**

This scenario outlines the procedure for adding space to a logical partition. You can also use the Resize Partitions wizard to perform the same operations.

#### **Sample Configuration**

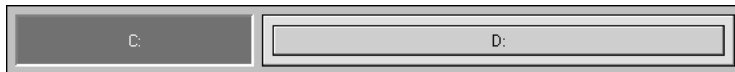
One 1 GB hard disk containing:

- One active primary FAT32 partition (C:) running Windows 98
- One extended partition enclosing one logical FAT partition (D:)



#### **Objective**

Resize drive C: smaller and add the newly created free space to drive D:.



#### **Procedure**

- 1** Resize drive C: smaller by the amount you want to add to drive D:.

Resize or move C: so that the unallocated space is on the right.

- 2** Enlarge drive D: to occupy the unallocated space just created.

The extended partition is automatically enlarged to accommodate drive D:.

- 3** Apply the changes to your system.

#### **Result**

Drive D: has room for additional files.

## Scenario 2: Adding Free Space to a Primary Partition

### Sample Configuration

One 4 GB hard disk containing:

- One active primary FAT32 partition (C:) running Windows 98
- One hidden primary NTFS partition
- One extended partition enclosing one logical FAT partition (D:) and a block of unallocated space



### Objective

Add the block of free space to the NTFS partition.



### Procedure

- 1 Move drive D: to the right (so the unallocated space is on the left).
- 2 Enlarge the NTFS partition to occupy the unallocated space.  
The extended partition is automatically resized to accommodate the NTFS partition.
- 3 Apply the changes to your system.

### Result

The NTFS partition has room for growth and adequate space for operating system files such as drivers and swap files.

## Creating Partitions

The Create operation lets you create primary partitions, extended partitions, and logical partitions.

If you have multiple hard disks and partitions, the process and available options may differ slightly from the following steps. For examples of creating partitions on more complex systems, see the scenarios that begin on page 40 of this user guide.

**1** Select a block of unallocated space.

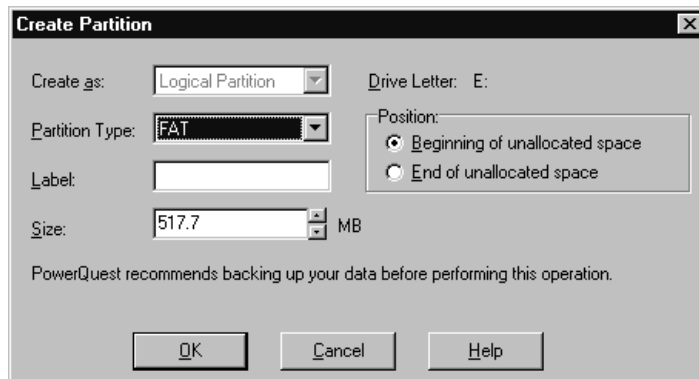
If no unallocated space exists, you must resize or delete an existing partition to create unallocated space. For instructions on resizing and deleting partitions, see “Resizing and Moving Partitions” on page 28 and “Deleting Partitions” on page 43.

If Remote Agent is running, you can create a partition on a remote machine.

On a single hard disk, you can have up to four primary partitions or three primary partitions and one extended partition. Within an extended partition, you can create unlimited additional subdivisions called logical partitions.

**2** Click **Operations** ► **Create**.

The **Create Partition** dialog appears.



**3** From the **Create as** drop-down list, select **Logical Partition** or **Primary Partition**.

You should create primary partitions to install operating systems and logical partitions for all other purposes (such as storing data and applications). If you have multiple hard disks, you can improve speed by installing operating systems and applications on separate disks. If you do not know what type of partition you want to create, see “Understanding Partitions” in Help.

You should create a primary partition if you plan to install an operating system. Refer to “Creating Bootable Partitions” on page 36 and “Installing a New Operating System” on page 38 for additional information.

If you select **Logical Partition**, PartitionMagic automatically creates an extended partition to enclose the logical partition, or, if you already have an extended partition, resizes the extended partition larger to encompass the logical partition. (The free space must be inside of or adjacent to the extended partition.)

If **Logical Partition** is unavailable, you may already have four primary partitions on the hard disk. Or, if you have an extended partition, you may not have selected a block of free space inside of or adjacent to the extended partition.

If you create a second, third, or fourth primary partition on a physical disk, PartitionMagic will create the new primary partition as unhidden. However, PartitionMagic will automatically hide the other primary partitions on that disk when performing a Set Active operation.

**4** From the **Partition Type** drop-down list, select the desired file system type:

**FAT** is the most common file system type. It is used by DOS, OS/2, and all versions of Windows.

**FAT32** is used by Windows 95 OEM Service Release 2, Windows 98, Windows Me, and Windows 2000.

**HPFS** is used by OS/2 and Windows NT 3.51 (and earlier versions).

**NTFS** is used by Windows NT and Windows 2000.

**Linux Ext2** and **Linux Swap** are used only by Linux.

**Extended** creates an extended partition which can contain any number of logical partitions. **Extended** is not an option if the hard disk already contains an extended partition or four primary partitions.

**Unformatted** creates an unformatted partition on your hard drive.

**5** (*Optional*) Enter a label for the new partition.

Labels can be up to 32 alphanumeric characters for NTFS partitions and up to 11 alphanumeric characters for other file system types.

**6** In the **Size** box, enter the desired size for the partition.

PartitionMagic automatically calculates a recommended size (based on the most efficient use of disk space), which you can accept or change.

**7** If the size you specified for the new partition is smaller than the available unallocated space, you can position the partition at the beginning (recommended) or end of the unallocated space. In the **Position** box, click **Beginning of free space** or **End of free space**.

**8** In the **Drive Letter** box, note the drive letter that will be assigned to the new partition after you reboot.

**9** Click **OK**.

If you created a new primary partition and plan to install an operating system on it, refer to “Installing a New Operating System” on page 38 for additional information.

**WARNING!** Because of conflicts that can result from different hardware and system configurations, do not create an applications or operating system partition on one computer and then move that hard disk to another computer. Data loss may occur.

### **Managing Drive Letter Changes**

Creating a new partition may cause your drive letters to change. For example, if you have one primary partition (C:) on your hard drive and a CD-ROM drive (D:), and you create a new logical partition on your hard drive, the new partition becomes D: and the CD-ROM drive changes to E: after you reboot your computer. As a result, any programs on your hard drive that were linked to the CD-ROM no longer function because the paths to files have changed.

PowerQuest recommends that you allow DriveMapper to automatically update the drive letter references in application shortcuts, initialization files, and registry entries when prompted to do so. However, you can update drive letter references manually. See “Changing Drive Letter References with DriveMapper” on page 94.

While you can use DriveMapper to update references to files, for least impact, consider creating all new partitions on the highest disk (for example, disk 3 in a three-disk system) and to the right of existing partitions.

### **Creating Bootable Partitions**

Before creating a partition where you plan to install an operating system (a bootable partition), you should understand the information outlined in the following table.

<b>Operating System</b>	<b>Boots from Primary or Logical</b>	<b>Supported Partition Types</b>	<b>Boot Code Boundary</b>	<b>Space Required</b>
DOS 6.22 and earlier	Primary	FAT	2 GB	8 MB
Windows 95	Primary	FAT or FAT32*	8 GB	90 MB
Windows 98	Primary	FAT or FAT32	>8 GB	175 MB
Windows Me	Primary	FAT or FAT32	>8GB	295 MB
Windows NT	Primary**	FAT or NTFS	4 GB	125 MB

<b>Operating System</b>	<b>Boots from Primary or Logical</b>	<b>Supported Partition Types</b>	<b>Boot Code Boundary</b>	<b>Space Required</b>
Windows 2000	Primary**	FAT, FAT32, or NTFS	>8 GB	1 GB
Linux (LILO)	Either	Linux Ext2	8 GB	250 MB
OS/2	Either	FAT or HPFS	4 GB	110 MB

\* A FAT32 partition is only accessible from Windows 95 if you have a version OSR2 (4.00.950B) or above.

\*\*Windows NT and Windows 2000 must boot from a primary partition on the first drive. However, only a few Windows NT/Windows 2000 files must reside on that partition; the remaining files can reside on a logical partition, which can be located on the first or a subsequent drive. The Windows NT/Windows 2000 boot partition can be shared with another operating system. Additionally, Windows NT must be installed on a FAT partition, and Windows 2000 must be installed on a FAT or FAT32 partition. During the installation, you can convert the partition to NTFS.

**IMPORTANT!** When you create, move, or resize a bootable partition, the partition must begin below the boot code boundary specified in the above table in order for the operating system to boot. With the exception of DOS 6.22 (or earlier) and OS/2, partitions beyond 8 GB are visible to the current operating system. For more information, see “Understanding the BIOS 1,024 Cylinder Limit” and “Understanding the 2 GB Boot Code Boundary” in Help. The partition map in the PartitionMagic main window displays indicators for the 2 GB boot boundary and the 1024 cylinder (8 GB) limit.

PartitionMagic displays a warning if you attempt to create, move, or resize a bootable partition outside of the 2 GB boot code boundary. If you continue with the operation, you may not be able to boot or to see the partition. In either case, you can resolve the problem by moving the partition back within the boot code boundary with the PartitionMagic rescue disks.

If your system includes SCSI disks and you create a partition before a bootable Linux partition, Linux may no longer be bootable. In this situation, you may need to create rescue disks, boot from the rescue disks, and repair the Linux boot information on the Linux partition.

Some I/O cards (typically older RAID cards) only provide access to the first 8 GB of a disk under DOS. Consequently, if you resize the operating system partition beyond 8 GB and it becomes unbootable, the PartitionMagic rescue disks may not allow you to manipulate partitions on that drive. You should be cautious about resizing any operating system partition beyond 8 GB.

## ***Installing a New Operating System***

If you install multiple operating systems, you must follow the steps below for each of them. For detailed information about installing operating systems, refer to OPERATE.PDF in the English\Docs folder on the PartitionMagic CD.

**1** Disable BootMagic if you have it installed.

**2** Create PartitionMagic rescue disks.

See “Creating Rescue Disks” on page 7.

**3** Make the partition active (not necessary if you are installing Linux).

See “Setting an Active Partition” on page 65.

Most operating systems must be installed on primary partitions. See “Creating Bootable Partitions” on page 36 for exceptions.

If you are not certain that the partition where you want to install the operating system will support an operating system, you should create a new operating system partition using the Create Partition wizard. See “Create New Partition Wizard” on page 82.

**4** Close all programs and reboot the computer using an operating system installation diskette.

**5** Install the operating system.

PowerQuest technical support does not help install operating systems. See your operating system documentation for details.

**6** If you have already installed BootMagic, use the PartitionMagic rescue disks to set the BootMagic partition active.

If you have not installed BootMagic, use the PartitionMagic rescue disks to create a new partition for BootMagic and set it active. Then install BootMagic.

**7** (*If applicable*) Add the operating system to your BootMagic configuration so that you can select the operating system you want to boot.

For more information about BootMagic, see “Using BootMagic” on page 97.



8 Reboot the computer.

## **Scenario 1: Creating a Primary Partition for Windows NT**

### **Sample System Configuration**

One 4 GB hard disk with one active primary FAT32 partition (C:) running Windows 98.



### **Objective**

Resize drive C: smaller. In the unallocated space created, create a primary FAT partition where Windows NT can be installed.



### **Procedure**

- 1 Resize drive C: smaller by 3 GB. For more information, see “Resizing and Moving Partitions” on page 28.

The partition where you want to install Windows NT must begin in the first 2 GB of the disk, or Windows NT will not be bootable. You may need to move your existing partition to the end of the disk, then create the Windows NT partition at the beginning of the disk.

- 2 Create a primary partition in the unallocated space using the following information:

**Partition Type:** Select **FAT**. Do not select FAT32 unless you are using Windows 2000. Earlier versions do not recognize FAT32 partitions.

**Label:** Type one, if desired.

**Size:** Type 3000.

**IMPORTANT!** Before performing the next step, make sure you have the Windows NT installation CD and disks; otherwise, you will not be able to boot your computer.

- 3 Set the new partition active. For more information, see “Setting an Active Partition” on page 65.

**4** Hide the FAT32 partition. For more information, see “Hiding and Unhiding Partitions” on page 63.

**5** Apply the changes to your system.

**IMPORTANT!** Before installing Windows NT, make sure that all partitions end prior to cylinder 1024. Otherwise, Windows NT will not install and will report that all the partitions are corrupted. If you cannot resize and move all partitions, you must obtain updated drivers from Microsoft.

**6** Reboot the computer using the first Windows NT installation diskette.

**7** Complete the Windows NT installation.

PowerQuest technical support does not help install operating systems. See your operating system documentation for details.

**8** Add Windows NT to your BootMagic configuration so that each time you start or restart your computer, you can select the operating system you want to boot. For more information, see “Using BootMagic” on page 97.

## Result

When the computer restarts, BootMagic presents a list of the available operating systems, in this case, Windows 98 and Windows NT. Select the operating system you want to boot.

## Scenario 2: Creating a Logical Partition on a Secondary Hard Disk

### Sample System Configuration

**Disk 1** — One 4 GB disk containing:

- One active primary FAT32 partition (C:) running Windows 95.
- One extended partition enclosing one logical FAT partition (E:).



**Disk 2** — One 2 GB hard disk containing:

- One 1 GB FAT32 primary partition (D:).
- 1 GB unpartitioned unallocated space.



One CD-ROM drive (F:).

## Objective

Create a 1 GB logical FAT partition on Disk 2.



## Procedure

- 1 Select Disk 2.
- 2 Create a logical partition in the 1 GB unallocated space using the following information:

**Partition Type:** Select **FAT**.

**Label:** Type one, if desired.

**Size:** Accept the pre-calculated size.

**Create As:** Choose **Logical**.

The partition will be assigned drive F: after reboot. Additionally, an extended partition will automatically be created to enclose the logical partition.

- 3 Apply the changes to your system.

## Result

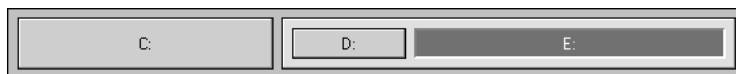
After the computer reboots, the new logical partition is drive F: and the CD-ROM is drive G:.

## Scenario 3: Creating Linux Logical Partitions

### Sample System Configuration

One 6 GB hard disk containing:

- One active primary FAT partition (C:) running Windows 95.
- One extended partition enclosing one logical FAT partition (D:) and one logical FAT32 partition (E:).



## Objective

Resize drive E: smaller. In the unallocated space created, create one logical Linux Ext2 partition and one logical Linux Swap partition.



## Procedure

- 1 Resize drive E: smaller by 550 MB. For more information, see “Resizing and Moving Partitions” on page 28.
- 2 Create a logical partition in the unallocated space using the following information:  
**Partition Type:** Select **Linux Ext2**.  
**Label:** Type one, if desired.  
**Size:** Type 500.
- 3 Create a second logical partition in the unallocated space using the following information:  
**Partition Type:** Select **Linux Swap**.  
**Label:** Type one, if desired.  
**Size:** Type 50.
- 4 Apply the changes to your system.
- 5 Reboot the computer using your Linux installation diskette.
- 6 Complete the Linux installation.

You do not need to change the active partition to install Linux.

PowerQuest technical support does not help install operating systems. See your operating system documentation for details.

**WARNING!** If you are using a boot utility like BootMagic, LILO (Linux Loader) must be installed to the Linux Ext2 partition containing the root directory and not installed to the master boot record. If you install LILO to the master boot record, other operating systems may become unbootable.

**7** (Optional) Add Linux to your BootMagic configuration so that each time you start or restart your computer, you can select the operating system you want to boot. For more information about BootMagic, see “Using BootMagic” on page 97.

## Result

When the computer restarts, BootMagic presents a list of the available operating systems, in this case, Windows 95 and Linux. Select the operating system you want to boot.

## Deleting Partitions

The Delete operation deletes a partition and makes its data inaccessible. The Delete and Shred operation destroys the data in a selected partition by overwriting the disk sectors. Once a partition has been shredded, it cannot be undeleted.

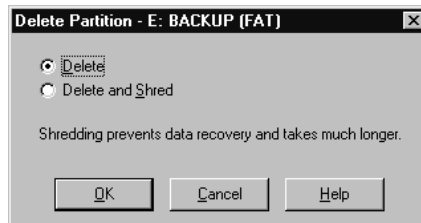
**1** Select the partition you want to delete.

To delete an extended partition, you must first delete all logical partitions within the extended partition. You cannot shred unallocated space.

If Remote Agent is running, you can delete a partition on a remote machine.

**2** Click **Operations** ► **Delete**.

The **Delete Partition** dialog appears.



**3** Click **Delete** or **Delete and Shred**.

The shred option is not available unless you are running PartitionMagic Pro.

**4** Click **OK**.

Deleting a partition can make your drive letters change, causing applications not to run because application shortcuts, initialization files, and registry entries refer to incorrect drives.

If your system includes SCSI disks and you delete a partition before a bootable Linux partition, Linux may no longer be bootable. In this situation, you may need to create rescue disks, boot from the rescue disks, and repair the Linux boot information on the Linux partition.

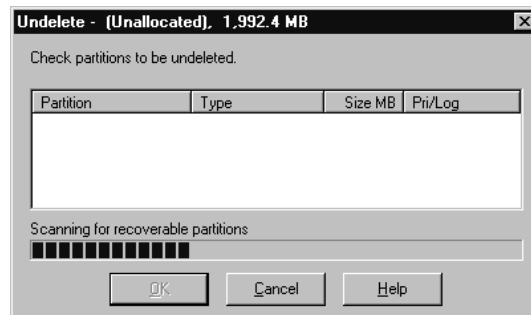
## Undeleting Partitions

The Undelete operation restores partitions that have been deleted on disk. You can undelete FAT, FAT32, and NTFS partitions. Undelete works best when you use it to restore a partition that you just deleted by accident. If you are undeleting partitions after you have made other changes (written data to them, resized existing partitions, etc.), see “Restrictions on Undeleting Partitions” on page 45.

- 1 Select the unallocated space to be searched.
- 2 Click **Operations** ► **Undelete**.

**IMPORTANT!** You can undelete a partition only if no other operations are pending on the unallocated space selected. If any operations are pending, the undelete icon and menu option will be dimmed (inaccessible).

The **Undelete** dialog appears, and the selected unallocated space is searched.



All primary and logical partitions that can be undeleted are displayed in the scrollable list. If no partitions are found within the unallocated space or none can be undeleted, a message appears indicating no partitions can be undeleted.

- 3 Within the scrollable list, click the checkbox of the partition you wish to undelete.
- While it is possible to undelete more than one partition at once, PowerQuest recommends that you undelete partitions one at a time, beginning with the one that you want most. Doing so helps ensure the integrity of the data within the partition.

**4** Click OK.

### **Restrictions on Undeleting Partitions**

There are some situations in which a partition that has been deleted cannot be undeleted and will not be displayed in the scrollable list. They include the following:

- You cannot undelete a primary partition if your hard disk contains four primary partitions.
- You cannot undelete a logical partition that was deleted and now is not within the extended partition.
- You cannot undelete a primary partition that was deleted and now is within the extended partition.
- The partition includes file system errors. If PartitionMagic finds a partition, it checks for errors before undeleting it. If the partition has errors, it cannot be undeleted.
- You cannot undelete a partition that has been completely or partially overwritten by another partition or file system. Because of this limitation, if you see two partitions in the **Undelete** dialog and undelete one of them, the other may no longer appear in the list.
- If two deleted partitions claim some of the same disk space, PowerQuest cannot guarantee the integrity of the data in those partitions when they are undeleted. For example, suppose you had two partitions, a 500 MB E: and a 500 MB F: and you deleted F: and resized E: to claim all the space (1 GB). Then you saved data to E:. Later, you deleted E:. Now you want to undelete partitions, and you can see both E: and F: in the **Undelete** dialog. If you restore E:, it is fine and F: is no longer displayed in the dialog (because its space has been claimed). However, if you restore F: instead of E:, you may get some of the data that you had saved to E:. Undeleting F: could make your computer unbootable or cause applications not to run.

## **Changing Partition Labels**

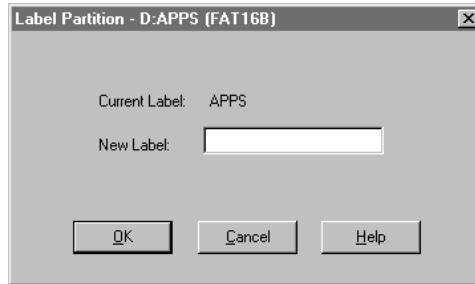
The Label operation lets you change a partition's label. Meaningful names make partition management easier.

**1** Select the partition with the label you want to change.

If Remote Agent is running, you can label partitions on a remote machine.

**2** Click **Operations** ► **Label**.

The **Label Partition** dialog appears.



**3** In the **New Label** box, type the new label.

NTFS volume labels can contain up to 32 alphanumeric characters. FAT volume labels can contain up to 11 alphanumeric characters and cannot contain the following characters: \* ? [ ] < > | + = : ; , . \ / " .

**4** Click **OK**.

## Formatting Partitions

The Format operation formats a partition, destroying all its data in the process. Formatting enables you to put a different file system on a partition.

PartitionMagic has several conversion options that let you convert from one file system to another without destroying existing files in a partition. See “Converting Partitions” on page 71.

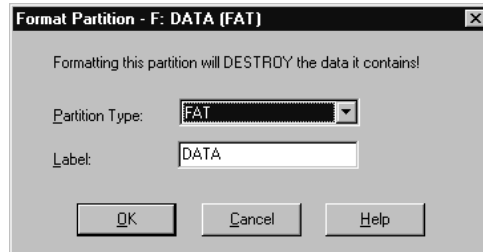
**1** Select the partition you want to format.

If Remote Agent is running, you can format partitions on a remote machine.

**2** Click **Operations** ► **Format**.



The **Format Partition** dialog appears.



**3** From the **Partition Type** drop-down list, select the desired file system type.

If the partition is too small or too large, some partition types may not be available.

**4** (*Optional*) Type a label for the partition.

**5** Click **OK**.

## Copying Partitions

The Copy operation lets you to make an exact duplicate of a partition. To copy a partition, you must have unallocated space that is equal to or larger than the partition you are copying.

Reasons why you might want to copy a partition include:

- To duplicate your operating system before upgrading to a new version or a different operating system (so that you can remember how the old operating system's windows, program icons, and properties were set up).
- To quickly move a smaller hard disk's contents to a larger, new hard disk.
- To change the relative order of partitions.
- To back up a partition.

**1** Select the partition you want to copy.

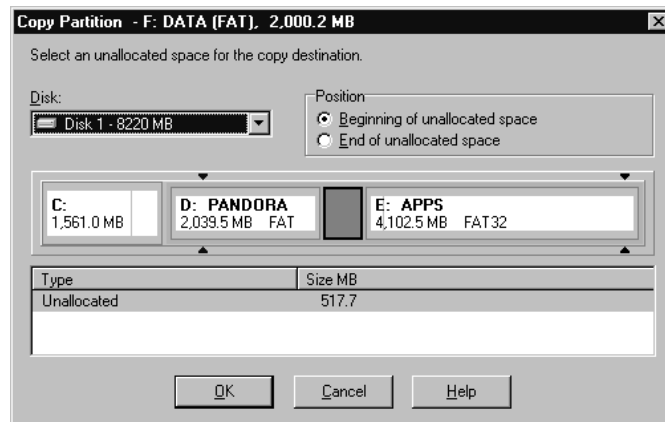
The **Copy** command is dimmed if there is not enough unallocated space on your disk for the partition.

If Remote Agent is running, you can copy partitions to or from a remote machine.

You cannot use PartitionMagic to copy Windows NT stripe sets, stripe sets with parity, or duplex/mirrored sets.

## 2 Click **Operations** ► **Copy**.

The **Copy Partition** dialog appears.



- 3 From the **Disk** drop-down list, select the disk where you want to copy the partition.
- 4 In the partition list, select the unallocated space where you want to copy the partition.
- 5 If the partition you specified is smaller than the available unallocated space, you can position the partition at the beginning (recommended) or end of the unallocated space. Under **Position**, click **Beginning of free space** or **End of free space**.
- 6 Click **OK**.

The copy is the same size (or slightly different if copied to a disk with a different geometry) and file system type and contains the same data as the original.

## Checking Partitions for Errors

The Check for Errors operation checks the integrity of a partition.

Each time PartitionMagic is started, it performs a check on all attached drives and their partitions. If the check finds a problem, “Check failed” appears in the partition list window under the **Type** column. This check is separate from the Check for Errors operation and is not as exhaustive.

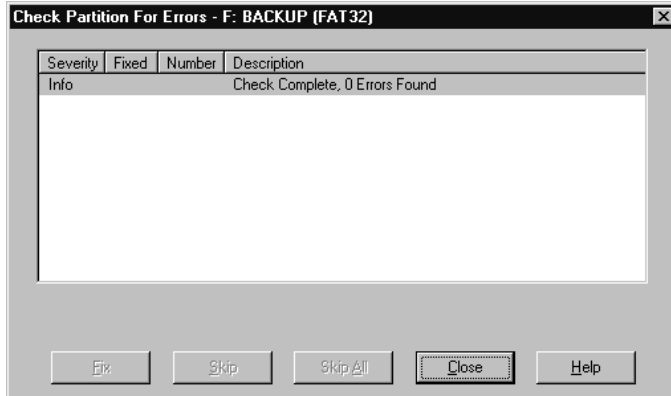
- 1 Select the partition you want to check.

PartitionMagic can only check partitions that it can lock (that is, partitions that do not have open files on them). If there are open files on a partition, the Check for errors command on the menu will be dimmed.

If Remote Agent is running, you can check partitions on a remote machine.

## 2 Click Operations ► Check for Errors.

The **Check Partition Results** dialog appears.



If Check for Errors does not discover any errors, an Info entry appears with “Check Complete” in the **Description** column.

If a Check for Errors operation fails, “Check Failed” appears in the **Used** and **Unused** columns in the partition list. You should fix any errors encountered. For more information, see “Resolving Check Errors” on page 117.

If Check for Errors finds an error, such as cross-linked files, lost clusters, or bad directory information on an NTFS volume and can fix it, a **Fix** button appears at the bottom of the dialog. For each error found, PartitionMagic displays the following:

- **Severity** describes the seriousness of the problem, which can be one of the following:

Severity	Description
Info	The information given is helpful but not critical. Does not correspond to any error.
Warning	The error may or may not cause problems.

Severity	Description
Error	A problem was encountered, but PartitionMagic may still be able to make changes to the partition. Run ScanDisk or CHKDSK to fix the error, or click <b>Fix</b> , if available.
Critical	A catastrophic problem. PartitionMagic cannot make any changes to the partition.

- **Fixed** displays **Yes** for each problem you fix on an NTFS volume. Not applicable for FAT, FAT32, or HPFS partitions.
- **Number** shows a number corresponding to the error. For more information, see “Error Messages and Solutions” on page 121.
- **Description** gives a brief description of the problem.

**3** To fix an error, highlight the problem and click **Fix**.

**4** If you want to skip one listed error, click **Skip**.

If you want to skip all listed errors, click **Skip All**.

**5** When you are finished viewing the check results and fixing NTFS errors, click **Close**.

Check for Errors does not display information about the status and structure of a partition as do the DOS, Windows, and OS/2 CHKDSK utilities. To view that information, use the **Info** option. For details, see “Getting Information About Partitions” on page 54.

PartitionMagic checks for OS/2 Extended Attribute errors on FAT partitions. If you do not use OS/2 or previously used OS/2 but no longer do, consider enabling the **Ignore OS/2 EA Errors on FAT** preference, as these errors are not a concern. For more information, see “Changing PartitionMagic Preferences” on page 23. OS/2 users should not enable **Ignore OS/2 Errors on FAT**, as undetected errors could cause data loss.

## Merging Partitions

You can merge two FAT or FAT32 partitions that are adjacent to each other on a disk. It is useful to merge partitions if you have reached the maximum number of partitions on your disk, but you do not want to delete a partition. It is also useful if you want to combine FAT partitions and convert them to one large FAT32 partition.

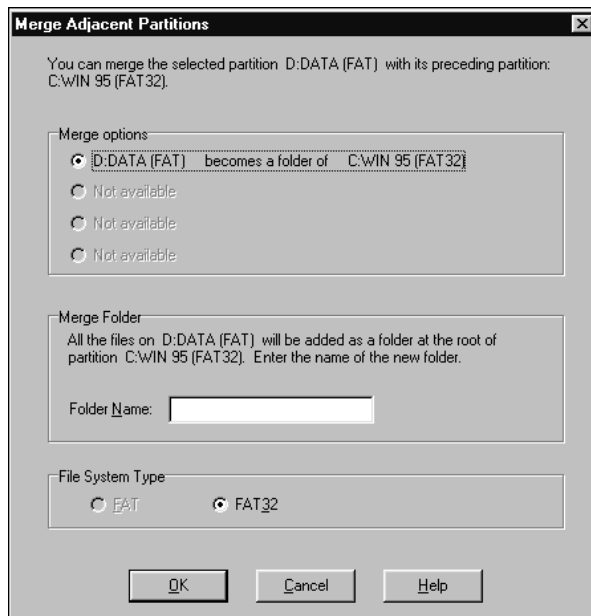
**IMPORTANT!** Merging partitions may take a long time (possibly hours), depending on the partition sizes and amount of data they contain. If you wish to check whether your machine is still operating, you can press the NumLock key and see if the light toggles. It may take a few seconds to register activation of the NumLock key on your keyboard. If you plan to merge partitions, you may wish to schedule it for a time when you will not need to use your system for an extended period of time. **If you shut down or turn off your computer while PartitionMagic is still working, it will cause corruption to the file system, which will result in data loss.** Do not shut down the system until after the process is complete.

- 1 Select one of the two partitions you want to merge with another partition.

**IMPORTANT!** Do not merge compressed partitions.

- 2 Click **Operations** ► **Merge**.

The **Merge Adjacent Partitions** dialog appears.



- 3 Under **Merge options**, choose the partitions you would like to merge.

The contents of one partition will be moved into a folder within the other partition.

You should not merge partitions that contain different operating systems.

**4** Under **Merge Folder**, type a name for the new folder that will be created in the partition you are keeping.

**5** Choose **FAT** or **FAT32** for the format of the partition you are keeping.

**IMPORTANT!** If you are combining FAT partitions, be careful not to convert them to FAT32 unless you have access to FAT32 partitions. Early releases of Windows 95 cannot access FAT32 partitions. Windows 95 OSR2 and all later versions of Windows can access FAT32 partitions.

**6** Click **OK**.

The partition map in the main window changes to show the merged partitions.

## Splitting Partitions

Use **Split** to divide a FAT or FAT32 partition into two contiguous partitions. It may be useful to split a partition if you have a large set of data or a mixture of data and applications within one partition.

The new partition is created to the right of the original partition; the original and new partitions together occupy the same amount of hard disk space as the original partition. The file system for the partition does not change. For example, if you had a 2 GB FAT partition and you split it, the left and right partitions together would use 2 GB and both would be FAT partitions.

When you split a partition, you can select the files and folders that you want the new partition to include. You can also label the new partition and specify whether it is primary or logical.

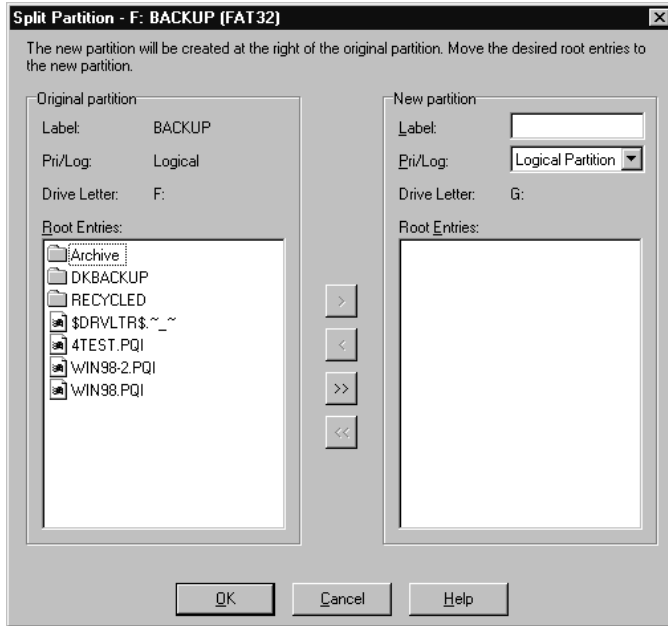
**1** Select the partition you want to split.

You cannot split a partition that is smaller than 100 MB.

A FAT partition must have at least 5% unused space, or the **Split** command will be dimmed on the menu. A FAT32 partition requires 10% unused space to split.

PowerQuest does not recommend splitting your operating system partition.

## 2 Click Operations ► Split.



- 3 Under **Original Partition**, select the files and folders you want to move to the new partition, then click the single right arrow.

Click the left arrow to remove selected files and folders from the new partition. To move all files and folders to the new partition, click the double right arrow. You can also click the left arrow to move selected files and folders back to the original partition if you change your mind. You must, however, have at least one file or folder remaining in each partition.

- 4 (Optional) Type a name for the new partition in the **Label** text box.
- 5 Select a partition type for the new partition from the **Pri/Log** drop-down list.

You cannot use the Split operation to convert the original partition from primary to logical or vice versa.

- 6 Click **OK**.

The size of the new partition is based on the minimum possible size and the total byte size of the files you are adding to the new partition. Any remaining free space is split proportionally between the two partitions according to the data in the partitions. For

example, if the two partitions used 2 GB and you included 700 MB of data in the original (left) partition and 300 MB of data on the new (right) partition, you would have 1 GB of free space available; the original partition would get 700 MB of unused space, and the new partition would get 300 MB of unused space.

Both the original and new partitions must be at least 40 MB. On hard disks larger than 4 GB, PartitionMagic will round the size of the partition up to at least 47 MB.

## Getting Information About Partitions

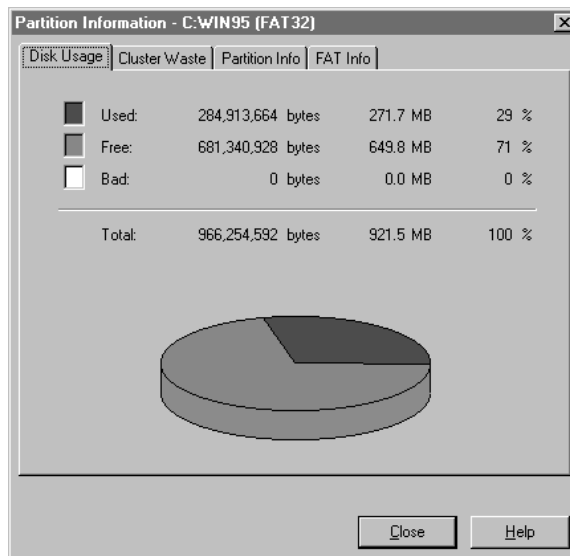
The Info operation displays information about the status and structure of a selected partition.

- 1 Select the partition you want information about.

If Remote Agent is running, you can get information about a partition on a remote machine.

- 2 Click **Operations** ► **Info**.

The **Partition Information** dialog appears.





Information is displayed in tabbed pages. To view a page, click its associated tab, which is always visible at the top of the pages. Based on the file system the partition uses, different pages appear.

**3** Click the tab for the page you wish to view.

Each page is described in the following sections.

**4** Click **Close** when you are finished viewing information.

## **Usage**

The **Usage** page is available for the FAT, FAT32, NTFS, and HPFS file systems. This page displays the following information in bytes, megabytes, and as a percentage:

- **Used** space on the partition, including space wasted by clusters
- **Unused** space on the partition
- **Bad** space on the partition
- **Total** space on the partition (the sum of Used, Unused, and Bad space)

PartitionMagic also displays this information in a pie chart.

## **Cluster Waste**

The **Cluster Waste** page applies only to partitions using the FAT or FAT32 file systems.

This page displays the following information:

- **Current Cluster Size** in bytes or kilobytes
- **Data** stored on the partition in bytes and megabytes
- **Wasted** space on the partition in bytes and megabytes
- **Total** used space in bytes and megabytes (the sum of Data and Wasted space)

PartitionMagic also displays this information in a bar chart.

## **Partition Info**

The **Partition Info** page is available for all types of partitions, including unallocated space and extended partitions. Information on this page includes the following:

- **Partition type** is shown in hexadecimal followed by a text description of the partition or file system type (such as FAT, FAT32, NTFS, or HPFS). The hexadecimal designation is the conventional way to display partition types.
- **Serial Number** is shown if the partition's file system uses serial numbers.

The lower portion of the page shows physical information about the partition:

- **First physical sector** shows the logical number and the location (cylinder, head, and sector) where the partition begins.
- **Last physical sector** shows the logical number and the location (cylinder, head, and sector) where the partition ends.
- **Total physical sectors** displays the number of sectors in the partition.
- **Physical Geometry** shows the total number of cylinders, heads, and sectors on the physical disk where the partition resides.

### ***File System-Specific Info Pages***

The last page in the **Partition Information** dialog corresponds to the file system used on the selected partition. For example, if the file system is FAT or FAT32, the page is **FAT Info**; if the file system is NTFS, the page is **NTFS Info**, and so forth.

#### **FAT Info**

This page applies to partitions using the FAT or FAT32 file systems.

The first section provides the following information:

- **Sectors per FAT** shows the number of sectors in each file allocation table and the number of file allocation tables on the selected partition.
- **Root directory capacity** shows the number of possible entries and the number of sectors in the root directory. Because a FAT32 root directory can grow as needed, this line is blank for FAT32 partitions.
- **First FAT sector** shows the logical sector number within the partition where the FAT begins.
- **First Data sector** shows the logical sector number within the partition where the data portion of the partition begins.

The next section provides the following information:

- The number of bytes in files on the partition, the number of files, and the number of those files that are hidden
- The number of bytes in directories on the partition, the number of directories, and the number of those directories that are hidden

The final section of this page, **FAT Extensions**, provides the following information:

- The number of bytes used for OS/2 Extended Attributes and the number of files and directories affected by Extended Attributes

- The number of bytes used for long filenames and the number of files and directories using long filenames

### **NTFS Info**

This page applies to partitions using the NTFS file system. The first section shows the following information:

- **NTFS Version** shows the version number. The NTFS version does not match the OS version. For example, Windows NT 4.0 uses NTFS version 1.3.
- **Bytes per NTFS sector** displays the number of bytes in each logical sector on the selected partition. (There are always 512 bytes in each physical sector.)
- **Cluster size** displays the size of each cluster and the number of sectors in each cluster on the selected partition.
- **First MFT Cluster** shows the logical number of the first cluster in the master file table (MFT).
- **File Record Size** gives the size of file records in the MFT.

The next section displays information similar to that shown by NT CHKDSK:

- The number of files on the partition and the bytes and clusters allocated to them
- The number of wasted bytes in file clusters
- The number of indexes (directories) and the bytes and clusters allocated to them
- The number of bytes and clusters reserved for other system structures

### **HPFS Info**

This page applies to partitions using the HPFS file system.

The first section displays the following information:

- **Partition status** shows one or more of these values:
  - **Active:** OS/2 is running and data has been written to the partition.
  - **Dirty:** Windows NT or OS/2 was shut down improperly and is not running.
  - **Corrupt:** One or more sectors are bad, and the partition needs to be checked.
  - **Hot Fixes:** Problems have been hot fixed.
  - **Not Active:** The partition is not in use.
- **DirBlock sectors** shows the range of sectors in the DirBlock band. The DirBlock band is usually preallocated near the center of the disk to reduce head movement.

- **Free DirBlocks** displays the number of unused DirBlocks in the DirBlock band and the total number of DirBlocks. If the DirBlock band fills up, additional DirBlocks are allocated from the data area.
- **HotFixes used** displays the number of hotfix sectors used and the total number of hotfix sectors available. Hotfix sectors are used temporarily to handle write errors. CHKDSK /F transfers the data from a hotfix sector to a good sector and makes the hotfix sector available again.

The last section displays information similar to that shown by OS/2 CHKDSK, including:

- The number of bytes and files on the partition and the number of sectors used for files
- The number of unused bytes in file sectors, which is equivalent to wasted bytes in FAT clusters. (Because HPFS allocates space by sectors, less space is wasted than in FAT clusters.)
- The number of bytes in directories, the number of directories on the partition, and the number of sectors used for directories
- The number of bytes in file/dir Fnodes, also shown as a number of sectors

An Fnode is a key structural element of the HPFS file system. Each Fnode is 512 bytes (one sector). One Fnode exists for each file or directory in the partition.

- Number of bytes reserved by the system, also shown as a number of sectors
- Number of bytes used for Extended Attributes (EAs)

## Scanning a Disk for Errors

MS ScanDisk is a utility included with Windows 9x and Windows Me that you can run from PartitionMagic. ScanDisk scans a partition for errors and fixes them. The Check for Errors operation also scans for errors, but it does not correct them.

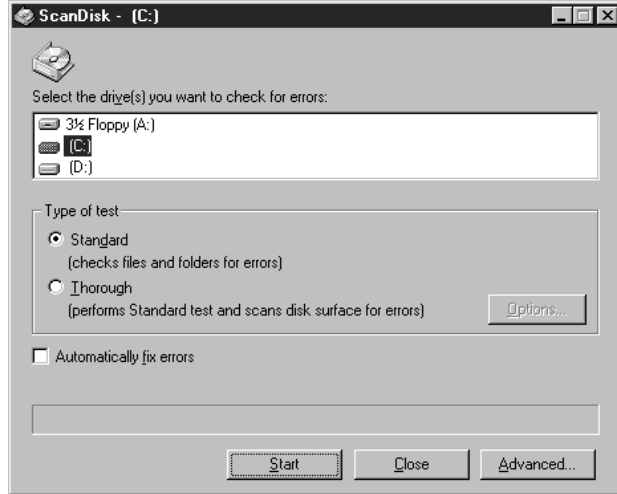
If you are running Windows NT, you can run NT CHKDSK, rather than ScanDisk, from PartitionMagic. The screens for CHKDSK are different from ScanDisk screens. See your Windows NT documentation for more information about CHKDSK.

- 1 Select the disk you want to scan for errors.

ScanDisk only scans partitions with assigned drive letters; it does not scan hidden partitions, extended partitions, unallocated space, or partitions with file systems not supported by the active operating system.

- 2 Click **Operations** ► **MS ScanDisk** (or **Windows CHKDSK**) on the menu bar.

The **ScanDisk** dialog appears.



**3** In the **Type of test** box, click **Standard** or **Thorough**.

**Thorough** scans the partition for bad sectors.

**4** (Optional) Click **Automatically fix errors**.

**5** Click **Start**.

When ScanDisk is finished, the **ScanDisk Results** dialog displays information about errors on the partition (if any were found) and other disk statistics, such as total disk space, number of bytes in bad sectors, and total allocation units.



For more information about MS ScanDisk, consult Windows Help.

# Completing Advanced Disk Operations

*This chapter includes the following information:*

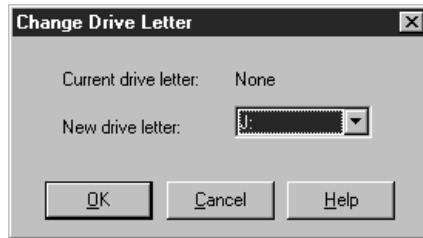
- Changing a Drive Letter
- Retesting Bad Sectors
- Hiding and Unhiding Partitions
- Resizing the Root Directory
- Setting an Active Partition
- Resizing Clusters

## Changing a Drive Letter

The Change Drive Letter operation lets you change the drive letter assigned to any partition visible to and supported by Windows NT or Windows 2000. If you are not running Windows NT or Windows 2000, this command is not available.

- 1 Select the partition whose drive letter you want to change.
- 2 Click **Operations** ► **Advanced** ► **Change Drive Letter**.

The **Change Drive Letter** dialog appears.



- 3 In the **New drive letter** box, type or select the drive letter you want to assign to the partition.
- 4 Click **OK**.

## Retesting Bad Sectors

The Bad Sector Retest operation lets you check sectors on FAT or FAT32 partitions that have been marked bad and recover sectors that are usable.

The FAT and FAT32 file systems allocate disk space for file storage in units called clusters, which are composed of a fixed number of sectors. Because the FAT or FAT32 file system tracks bad sectors at the cluster level, it marks an entire cluster bad even though the problem may exist in a single sector. Use **Info** to discover whether a partition contains bad clusters. For more information, see “Getting Information About Partitions” on page 54.

As a conservative measure, when you move or resize a partition or increase cluster size, PartitionMagic marks all new clusters containing any part of old bad clusters as bad (even though the clusters may not actually contain bad sectors). Likewise, when you decrease a partition’s cluster size, PartitionMagic divides bad clusters into multiple bad clusters. If, after you complete these tasks, PartitionMagic reports bad sectors, you can perform a bad sector retest and reclaim the good sectors that were marked bad.



**1** Select the partition you want to retest.

**2** Click **Operations** ► **Advanced** ► **Bad Sector Retest**.

The **Bad Sector Retest** dialog appears to explain that PartitionMagic will retest sectors that are marked bad and reclaim them if they do not include bad sectors.

**3** To continue with the test, click **OK**.

Some sectors marked as bad are “marginally bad,” meaning that one time the sector works fine and another time it does not. Bad Sector Retest may mark a marginally bad sector as good. This can result in data loss if the marginally bad sector fails in the future. Most modern hard drives detect bad sectors and automatically remap the sector, so in general, you do not see bad sectors on modern hard drives. If you do get bad sector errors on a modern hard drive, it is recommended that you replace the drive.

## Hiding and Unhiding Partitions

The Hide Partition operation lets you secure partitions against unwanted user access. You can perform this operation on FAT, FAT32, NTFS, and HPFS partitions.

When you hide a partition, it will not be assigned a drive letter the next time you boot your computer.

**1** Select the partition you wish to hide.

If Remote Agent is running, you can hide or unhide a partition on a remote machine.

**2** Click **Operations** ► **Advanced** ► **Hide Partition** (or **Unhide Partition**).

Unless you are running Windows NT or Windows 2000, unhiding multiple primary partitions may cause your machine to be unbootable.

The **Hide Partition** dialog appears, warning you that drive letters may change.

**3** To confirm that you want to hide the partition, click **OK**.

Under Windows 9x and Windows Me, hiding and unhiding partitions can cause the drive letters of other partitions to change. When this happens, your computer may not boot and applications may not run. PowerQuest recommends that you allow DriveMapper to run automatically to update drive letter references that change as a result of hiding or unhiding partitions.

If your hard disk has more than one primary partition, only one is visible by default. When you use the Set Active operation, PartitionMagic unhides the selected primary partition and hides other primary partitions. While you can unhide more than one primary partition, we recommend that you do not.

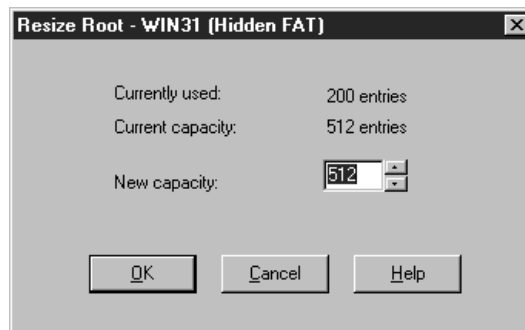
If you are running Windows NT or Windows 2000, partitions are not hidden automatically; therefore, you can have multiple visible primary partitions.

## Resizing the Root Directory

The Resize Root operation lets you change the maximum number of entries that can be placed in the root directory of a FAT partition. The number of root entries is set at the time the partition is formatted; the limit does not expand automatically as it does in a subdirectory or in a FAT32 partition. Consider increasing this number if you use Microsoft long filenames in the root directory. During this operation, data within the partition is unaffected.

- 1 Select the partition whose root directory you wish to resize.
- 2 Click **Operations** ► **Advanced** ► **Resize Root**.

The **Resize Root** dialog appears, displaying the number of used entries and the current capacity.



- 3 In the **New capacity** box, type or select the number of entries you want the root directory to have.

The number you type will be rounded to one that preserves the current cluster alignment.

- 4 Click **OK**.

Occasionally, enlarging the root directory displaces the first few files on the partition (such as IO.SYS and MSDOS.SYS if the partition contains an operating system). If the root directory is on a boot partition and the partition fails to boot after resizing the root directory, you should run SYS.COM to move the displaced files back to the front of the disk.

## Setting an Active Partition

The Set Active operation lets you make a partition the active partition (the partition the computer boots from). PowerQuest provides multiple ways to set a partition active: PartitionMagic (Windows version or rescue disk version), BootMagic, and PQBoot. This section explains changing the active partition from within PartitionMagic.

Only one partition on a hard disk can be active at a time. To boot your computer from a partition, the partition must be on the first disk, and it must contain an operating system. When your computer boots, it reads the partition table of the first disk to find out which partition is active and boots from that partition.

**IMPORTANT!** Before you make a partition active, it must be bootable. If the partition is not bootable or if you are not certain if it is, have a boot diskette ready.

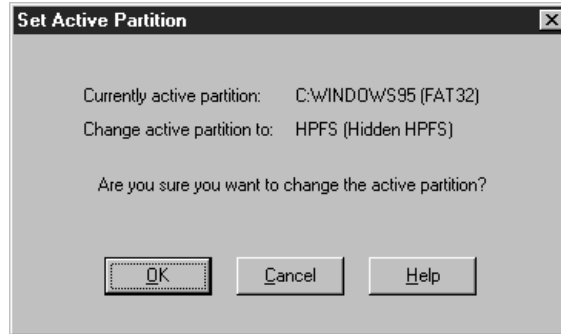
If you plan to install an operating system to a partition, the partition must be active.

PartitionMagic hides any other FAT, NTFS, and HPFS primary partitions (unlike Windows 9x and DOS FDISK programs which cannot hide or unhide partitions). Hiding the other primary partitions makes it easy to install multiple operating systems and choose the one you want to set active. For example, if you have Windows 95 and want to install Windows NT in a separate partition, you can make the Windows 95 partition smaller, create another primary partition, set it as the active partition, and then boot from the Windows NT installation diskettes.

- 1 Select the partition you want to make active.
- 2 Click **Operations** ► **Advanced** ► **Set Active** on the context menu.

*(Windows NT or Windows 2000 only)* In a configuration with mixed IDE and SCSI hard disks, Windows does not always see the boot drive as the first disk. PartitionMagic displays drives in the order that Windows reports them. As a result, you may see your boot device as drive 1, 2, etc. PartitionMagic may also incorrectly report that there is no active partition. Be sure you identify which drive is the boot drive.

The **Set Active Partition** dialog appears.



- 3 Click **OK**.

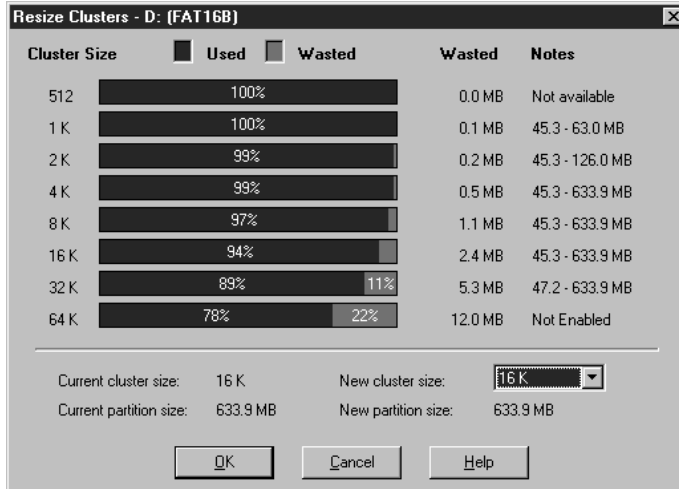
## Resizing Clusters

The Resize Clusters operation lets you change the cluster size on FAT and FAT32 partitions. Reducing cluster size may help you reclaim wasted space on your hard disk.

All files on FAT and FAT32 partitions are stored in allocation units called clusters. Each file on a partition is allotted at least one cluster. The size of a partition determines cluster size. Unless the size of a file is an exact multiple of cluster size on the partition where the file is located, the file includes wasted space. Larger partitions have larger clusters, and, therefore, more wasted space. For more information, see “Making Efficient Use of Disk Space” in Help.

- 1 Select the partition where you want to resize clusters.
- 2 Click **Operations** ► **Advanced** ► **Resize Clusters**.

The **Resize Clusters** dialog appears.



For each cluster size, PartitionMagic displays the following:

- A bar graph and percentages represent how much space would be used and how much space would be wasted if you chose that cluster size for the currently selected partition
- Wasted space (in megabytes)
- The range of allowable partition sizes (in megabytes) or other information
- If a cluster size requires a partition that is too small for the data and files on the partition, “Not Available” appears in the **Notes** column. “Not Enabled” appears in the **Notes** column for the 64 K cluster size because it is only used for Windows NT/2000. You can enable the 64 K cluster size, but it is not recommended. For more information, see “Allow 64K FAT Clusters for Windows NT/Windows 2000” on page 23.

The lower portion of the **Resize Clusters** dialog displays information about the current and new cluster size and the current and new partition size (based on the new cluster size).

- 3** Using the information in the dialog, decide which cluster size you want to use (and can use) and select it from the **New cluster size** drop-down list.

PartitionMagic adheres to the established limits for partition and cluster sizes. You cannot select a cluster size that is invalid for the selected partition.

It is not recommended that you use the smallest cluster size on partitions containing a single, large file, such as a database or swap file.

Choosing a smaller cluster size may resize the partition smaller, creating unallocated space next to the partition. You can use this unallocated space by creating a new partition.

**WARNING!** Do not choose the 64 K cluster size unless you have Windows NT or Windows 2000 and a 2–4 GB disk.

**4** Click **OK**.

### **Default Cluster Sizes**

A partition's cluster size is set by the DOS FORMAT operation, based on the size of the partition, as shown in the following tables.

**DOS and Windows default FAT cluster sizes**

<b>Partition Size (MB)</b>	<b>FAT Type</b>	<b>Sectors Per Cluster</b>	<b>Cluster Size</b>
0-15	12-bit	8	512 bytes
16-127	16-bit	4	2 K
128-255	16-bit	8	4 K
256-511	16-bit	16	8 K
512-1,023	16-bit	32	16 K
1,024-2,047	16-bit	64	32 K
2,048-4,096	16-bit	128	64 K*

\*Only available with Windows NT and Windows 2000 and a 2–4 GB disk.

**Windows 95 OSR2, Windows 98, Windows Me, and  
Windows 2000 default FAT32 cluster sizes**

<b>Partition Size (GB)</b>	<b>Sectors Per Cluster</b>	<b>Cluster Size</b>
0.256- 8.01	8	4 K
8.02-16.02	16	8 K
16.03-32.04	32	16 K
> 32.04	64	32 K

It is not recommended that you use the smallest cluster size on partitions containing a single, large file, such as a database or swap file.





## **Converting Partitions**

*This chapter includes the following information:*

- Procedure for Converting Partitions
- Convert FAT partitions to FAT32
- Converting FAT Partitions to HPFS
- Converting FAT Partitions to NTFS
- Converting FAT32 Partitions to FAT
- Convert FAT32 to NTFS (Windows 2000 only)
- Converting NTFS Partitions to FAT or FAT32
- Converting Partitions to Logical or Primary
- Converting Partitions to Logical or Primary

## Procedure for Converting Partitions

You can convert the following file formats:

- FAT partitions to FAT32
- FAT partitions to HPFS
- FAT partitions to NTFS (Windows NT/2000 only)
- FAT32 partitions to FAT
- FAT32 partitions to NTFS (Windows 2000 only)
- NTFS partitions to FAT
- NTFS partitions to FAT32

You can also convert primary partitions to logical and logical partitions to primary.

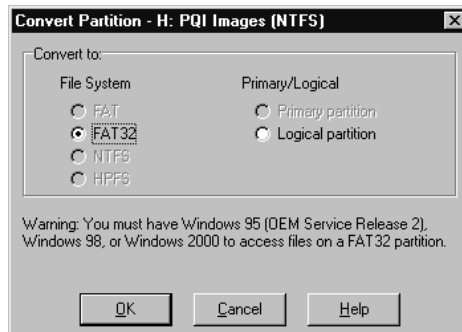
You cannot convert FAT or FAT32 partitions to NTFS if you are running PartitionMagic from the rescue disks.

**IMPORTANT!** You cannot convert file system types on compressed drives. First, uncompress the drive, then run the conversion.

The basic conversion steps (1-5) are found below. However, for each file type there is specific information you need to know before beginning any conversion. Please see the appropriate heading listed in this section before completing the conversion procedure.

- 1 Select the partition you want to convert.
- 2 Click **Operations** ► **Convert**.

The **Convert Partition** dialog appears.



- 3 Under **Convert to**, choose the file system to which you want to convert the partition.

Depending on the file format of the partition you are converting, some options may appear dimmed.

If you want to convert your partition to primary or logical, see “Converting Partitions to Logical or Primary” on page 79.

**4** Click **OK**.

## Converting FAT Partitions to FAT32

FAT32 partitions have less wasted disk space than FAT partitions. (For more information, see “Resizing Clusters” on page 66.) However, you should be aware of these issues:

- You must have Windows 95 OEM Service Release 2, Windows 98, or Windows 2000 to access files on a FAT32 partition. If you run an operating system other than these, FAT32 partitions will be inaccessible when the other operating system is running, even if one of these operating systems is installed on your machine.
- Some laptops have a sleep mode that saves all memory to disk. Because this function sometimes requires a FAT partition, consult your laptop manual or contact the manufacturer before converting to FAT32.
- The minimum recommended size for a FAT32 partition is 256 MB.

The steps for this process are listed on page 72.

## Converting FAT Partitions to HPFS

When you convert a FAT partition to HPFS, PartitionMagic preserves data, long filenames (created by some versions of Microsoft Windows), and Workplace shell long name Extended Attributes.

**WARNING!** You must have OS/2 to access files on an HPFS partition. Without it, you will lose all files on the converted partition. Proceed with caution when performing this conversion, as it cannot be reversed.

**1** Before you convert, back up the data on your boot drive.

Because the conversion cannot be reversed, we strongly recommend that you take this precautionary step.

If a Corrective Service Facility (CSF) has been applied to your version of OS/2, you must make new Install/Utility diskettes and use them in place of your original OS/2 diskettes.

- 2** Reboot your system from a diskette, from a partition other than the one you are converting, or from DOS.
- 3** Run PartitionMagic from a partition other than the one you are converting.
- 4** Follow the conversion steps listed on page 72.
- 5** If you have open files, a prompt appears indicating that the changes you have made require going to MS-DOS mode (if you are using Windows 95 or Windows 98) or rebooting (if you are using Windows NT or Windows 2000). Click **OK** to make the changes.

After the changes are made, the computer is rebooted.

- 6** Copy SYSINSTX.COM from the OS/2 Installation Disk to the root of the new HPFS partition.
- 7** Copy UHPFS.DLL from the OS/2 Disk 2 to the root of the new HPFS partition.  
If you have an OS/2 CD-ROM, consult your IBM documentation for instructions on creating a diskette from the disk image.
- 8** Change to the new HPFS partition by typing *drive*: (where *drive* is the drive letter of the partition you converted from FAT to HPFS).
- 9** From the root of the new HPFS partition, type `SYSINSTX drive:` (where *drive* is the drive letter of the partition you converted from FAT to HPFS).
- 10** Verify that HPFS.IFS is listed in the CONFIG.SYS file similar to the following:

```
IFS=C:\OS2\HPFS.IFS /CACHE:256 /CRECL:4 /AUTOCHECK:C
```

If this line is not present, add it, replacing **C:** and **:C** with the drive letter of the partition you just converted.

**IMPORTANT!** If you want to be able to boot to the command line using **<Alt+F1>**, make this change to all CONFIG.\* files in \OS2\BOOT.

- 11** Verify that HPFS.IFS is present in the OS2 directory. If not, copy it from OS/2 Installation Disk 1.

Your HPFS partition is now bootable.

## Converting FAT Partitions to NTFS

The Convert FAT to NTFS operation launches the Microsoft Convert utility to convert a FAT partition to NTFS. You must be running Windows NT/2000 to complete this conversion. This cannot be performed from the rescue diskette.

If you boot multiple OSs, you must be careful converting FAT to NTFS. NTFS is only accessible from Windows NT/2000; therefore, the data in this partition will not be accessible if you boot DOS, Windows 9x, or Windows Me.

After clicking **OK**, if you have no operations pending and if Windows NT can lock the partition (no open files), the FAT file system is converted. If you have operations pending, you must apply them first before converting from FAT to NTFS. If you do not apply the operations, a prompt appears asking if you want to apply the changes now before converting your FAT file. Click **OK** to apply the changes and continue with the conversion.

If you have any open files, a message appears indicating that the convert utility cannot gain exclusive access to the drive and asks if you want to perform the conversion immediately. If you type **Y**, your computer is shut down, and the conversion is done at reboot time.

## Converting FAT32 Partitions to FAT

To complete this conversion, the partition must have at least 300-400 MB of unused space because of how the FAT file system allocates disk space for file storage. The partition must have approximately 1.7 GB of data or less because FAT partitions are limited to 2 GB. If the command is dimmed in the dialog, you must delete some data to enable the conversion.

If the FAT menu option is dimmed, your FAT32 partition contains over 2 GB of data. If the partition size is over 2 GB but it contains less than 2 GB of data, you can convert the partition (without data loss), but the new partition will be 2039 MB.

During the conversion, PartitionMagic may report too many root directory entries (the maximum number of entries in a FAT partition's root directory is limited, unlike a FAT32 partition's root directory). In this case, move or copy some of the files in the root directory to another location and then start the conversion again.

## Converting FAT32 to NTFS

The Convert FAT32 to NTFS operation launches the Microsoft Convert utility to convert a FAT32 partition to NTFS. You must be running Windows NT 4.0 Workstation or Windows 2000 to complete this conversion.

Be aware that data in an NTFS partition will not be accessible if you boot DOS or Windows 95/98/Me.

The steps for this process are listed on page 72.

After clicking **OK**, if you have no operations pending and if Windows 2000 can lock the partition (no open files), the FAT32 partition is converted. If you have operations pending, you must apply them first before converting from FAT32 to NTFS. If you do not apply the operations, a prompt appears asking if you want to apply the changes now before converting your FAT partition. Click **OK** to apply the changes and continue with the conversion.

If you have any open files, a message appears indicating that the convert utility cannot gain exclusive access to the drive and asks if you want to perform the conversion immediately. If you type **Y**, your computer is shut down, and the conversion is done at reboot time.

## Converting NTFS Partitions to FAT or FAT32

Converting an NTFS partition to FAT allows you to view the contents of the partition from DOS, Windows 9x, or Windows Me, as well as Windows NT and Windows 2000.

Converting an NTFS partition to FAT32 allows you to view the contents of the partition from Windows 95b/98/Me/2000. However, a FAT32 partition will not be accessible to Windows NT.

**IMPORTANT!** You will lose file system-specific information when converting from NTFS to FAT. Refer to “NTFS Information Lost When Converting to FAT or FAT32” on page 77 for additional information.

If the conversion fails when you apply changes, refer to the bulleted list on page 77 for a list of possible reasons.

## **Restrictions on Converting NTFS Partitions to FAT or FAT32**

NTFS is a more advanced file system than FAT and FAT32. Therefore, depending on the NTFS features used on the partition, the type of data, and partition size, you may or may not be allowed to complete the conversion.

If you receive an error message and the conversion stops, it is usually caused by one or more of the following:

- The file system for conversion is not allowed for the current partition size. A FAT32 partition should be greater than 256 MB, and a FAT partition must be less than 2 GB.
- The NTFS partition has data in memory that has not yet been written to the hard disk.
- The file system has errors, such as lost clusters and cross-linked files. You can fix these problems, then try the conversion again.
- There is not enough temporary space in the partition to do the conversion. The conversion will require the NTFS system and the FAT32 system files until the last step of the conversion. Also, there is data in NTFS File Replication Services that must be moved to external clusters and saved.

## **NTFS Information Lost When Converting to FAT or FAT32**

If you can complete the conversion from NTFS to FAT or FAT32, you may receive a warning about the quality of data and feature loss, depending on the features used on the partition, the type of data, and the partition size.

<b>Warning</b>	<b>Description</b>
<b>Error</b>	<p>The conversion is not allowed. Because the partition being converted is using advanced features in NTFS, you may experience unintended data and feature loss. You will receive an error in one or more of the following cases:</p> <ul style="list-style-type: none"><li>• There is more than one data stream for any file.</li><li>• Any links.</li><li>• Any extended attributes.</li><li>• Any user-defined attributes in any file.</li><li>• Device entries.</li><li>• There are sparse files on the volume. Any sparse files, except for the bad sector file, will stop the conversion.</li></ul>

<b>Warning</b>	<b>Description</b>
<b>Warning</b>	<p>The conversion is allowed. Although a conversion warning is not as serious as an error, you may still experience the loss of NTFS-specific features that are not supported in FAT or FAT32. You will receive a conversion warning in one or more of the following cases:</p> <ul style="list-style-type: none"> <li>• Disk usage quotas - NTFS supports limiting the amount of disk space for a user. After conversion, all users will have full access to all free hard disk space.</li> <li>• Access control lists - This is a file attribute that lists all the users that can access a file. After conversion, all users will have full access to all files.</li> <li>• Index of access control lists - A list of all files that have specific access rights assigned to them. After conversion, all users will have full access to all files.</li> <li>• FAST index file - This file is sometimes created on Windows 2000 computers. After conversion, all indexing of keywords will be lost.</li> <li>• Old versions of files - NTFS has the ability to keep versions of files, however, only the current version of the file is converted and saved.</li> </ul>
<b>No Warning</b>	<p>The conversion is allowed. The most basic NTFS partition still gives files more features than are found in FAT or FAT32. When Windows NT 4.0 is used to copy files from an NTFS partition to a FAT partition, no warning is given about the features you are losing. Also, the conversion will not give you a warning about specific features that cannot be converted. These features include:</p> <ul style="list-style-type: none"> <li>• Standard journal file (only used internally by NTFS) - This file is a transaction log of changes to the NTFS file system. After conversion, the journal file will be lost.</li> <li>• NTFS-specific file attributes - NTFS and FAT both have standard file attributes, such as Read-only, Archive, Hidden, and System. NTFS has additional file attributes that can be set. After conversion, however, these additional file attributes will be lost.</li> </ul>



Warning	Description
	<ul style="list-style-type: none"> <li>• NTFS-specific file dates - The last edit date is converted to the FAT date. After conversion, the creation date, last access date, and last edit date (date change only) will be lost.</li> <li>• Reliable change journal - This journal file is new to Windows 2000. After conversion, this file will be lost.</li> </ul>

## Converting Partitions to Logical or Primary

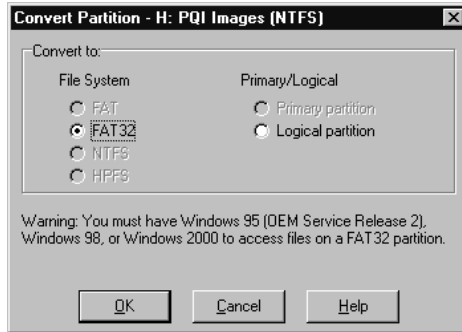
You might want to convert a primary partition to a logical partition if you have reached the limit of primary partitions on your hard disk. If you create a logical partition, PartitionMagic will automatically place it in an extended partition. You can then create more logical partitions within that extended partition, expanding the maximum number of partitions on the disk.

You might want to convert a logical partition to a primary partition if you plan to install an operating system on it. The partition must be a primary partition to be bootable.

**IMPORTANT!** If you convert a primary active partition to logical (such as your Windows NT/2000 system partition), your computer will not boot from the hard drive.

- 1 From the **Disk** drop down list (located on the toolbar), select the disk containing the partition you wish to convert.
- 2 On the partition map, list, or tree view, select the partition you want to convert.
- 3 On the toolbar **Operations** ► **Convert**.

The **Convert Partition** dialog appears.



**4** Click either **Primary** or **Logical**.

**5** Click **OK**.

You cannot convert from primary to logical if another primary partition exists between the chosen partition and an existing logical partition.

You cannot convert from logical to primary if the conversion would result in more than four primary partitions or the partition has one or more logical partitions to the left and one or more logical partitions to the right.

# Automating Tasks

*This chapter includes the following information:*

- Wizard Overview
  - Running Wizards*
  - Applying Changes*
  - Create New Partition Wizard*
  - Resize Partitions Wizard*
  - Redistribute Free Space Wizard*
  - Merge Partitions Wizard*
  - Copy Partition Wizard*
  - Hiding Wizard Icons*
- Scripting

## Wizard Overview

PartitionMagic includes five wizards for common tasks. The wizards provide an alternative to performing the tasks manually using the commands on the **Operations** menu.

### Running Wizards



There are two ways to run a wizard:

- Click **Wizards** on the menu bar, then click the wizard you want to run.
- Click the appropriate wizard icon in the PartitionMagic main window.

### Applying Changes

When you complete a wizard, the partition map and partition list in the main window reflect the changes you entered. However, the changes do not actually affect your system until you apply them.

You can apply (or discard) changes that you enter using wizards in three ways:

- Click  on the toolbar to apply the changes, or click  on the toolbar to undo the changes and start over.
- Click **General** ► **Apply Changes** (or **Discard All Changes** or **Undo Last Change**).
- Click the **Apply Changes** or **Undo Last** icon at the bottom of the main window.

After running a wizard, you can run other wizards or perform other partition operations and then apply or discard all the pending changes at once.

### Create New Partition Wizard

The **Create new partition** wizard creates a new primary or logical partition.

You should be aware of the following considerations when creating a new partition:

- Creating a new partition may cause your drive letters to change. For example, if you have one primary partition (C:) on your hard drive and a CD-ROM drive (D:), and you create a new logical partition on your hard drive, the new partition becomes D: and the CD-ROM drive changes to E: after you reboot your computer. As a result, any programs on your hard drive that were linked to the CD-ROM no longer function because the paths to files have changed.

- The file system you choose for the new partition will affect which operating systems can access the partition. The wizard dialogs will instruct you about the choices you make. For example, if you choose to create a FAT32 partition, the wizard will inform you that FAT32 partitions are used by Windows 95 OEM Service Release 2, Windows 98, Windows Me, and Windows 2000 but that Windows 3.x and DOS cannot access them. Pay close attention to the information in the dialog boxes, or you may inadvertently make your data inaccessible.
- Before installing Windows NT, make sure that all the partitions that you want Windows NT to recognize end prior to cylinder 1024. Otherwise, Windows NT will not install and will report that all the partitions are corrupted. If you cannot resize and move all partitions, you must install Service Pack 5 or obtain updated drivers from Microsoft before installing Windows NT.
- After you apply the changes from the wizard and reboot your computer, the operating system assigns the new partition a drive letter. You can then save data or install an operating system to your new partition.

If you created a new primary partition and plan to install an operating system on it, refer to “Installing a New Operating System” on page 38 for additional information.

### ***Resize Partitions Wizard***

The Resize Partitions wizard helps you resize a partition and lets you specify how the resize will affect other partitions on the same disk. For example, if you have C: and D: partitions and you choose to enlarge C:, the wizard could take space from D: and allocate it to C:.

For information about resizing partitions without the wizard, see “Resizing and Moving Partitions” on page 28.

### ***Redistribute Free Space Wizard***

The Redistribute free space wizard spreads the free space on a hard disk evenly across partitions. Free space refers to unused space within partitions and space that is not allocated to any partition.

You can redistribute free space on one hard disk at a time. You cannot redistribute free space across several disks.

For information about redistributing free space without the wizard, see “Resizing and Moving Partitions” on page 28.

## ***Merge Partitions Wizard***

The Merge Partitions wizard helps you merge two adjacent FAT or FAT32 partitions. You choose two partitions, and one will be expanded to include the second. The contents of the second partition are added as a folder inside the first partition.

PowerQuest recommends that you run DriveMapper to update drive letter references after merging partitions. The wizard will prompt you to run DriveMapper automatically.

## ***Copy Partition Wizard***

The Copy Partition wizard helps you duplicate a partition. The copy is the same size and file type and contains the same data as the original. When you copy a partition, you specify the hard disk and the unallocated space where you want to place the copy. If necessary, the wizard will resize neighboring partitions to create sufficient space to perform the copy.

## ***Hiding Wizard Icons***

You can choose whether to display the wizard buttons near the bottom of the PartitionMagic main window. Hiding the wizard buttons increases the display area of the partition list.

### **1 Click View ► Wizard Buttons.**

A check mark displays by the menu command if the wizard buttons are hidden. Choose the command again to redisplay the buttons.

The setting you choose will remain in effect until you reset it.

## **Scripting**

PartitionMagic includes the ability to change the partitions on a computer by running a script that you create with Script Builder. The script is an ASCII file with text statements that define the operations to take place. To run a script, you pass the script filename to the program on the command line.

For additional information about script processing, refer to the PartitionMagic online help or the PMScript.PDF file in the English\Docs folder on the PartitionMagic CD.

## Remote Agent

*This chapter includes the following information:*

- Remote Agent Overview
- Creating Remote Agent Boot Disks
- Using the Remote Agent Boot Disk
- Accessing a Remote Machine

## Remote Agent Overview

Remote Agent is only available with PartitionMagic Pro.

Remote Agent (RA) is a DOS application that is executed on a machine that PartitionMagic can contact across the wire using a TCP/IP connection. Using Remote Agent, you can:

- Copy or move partitions between the remote machine running the Remote Agent boot disk and the Windows machine running PartitionMagic
- Delete a remote partition
- Create a remote partition
- Check the integrity of a remote partition

You cannot use Remote Agent to copy or move partitions from one hard disk on a remote machine to a second hard disk on the same machine because it would cause too much network traffic.

### ***Three-Step Process***

Using the **Connect Remote Agent** command on the **General** menu involves three steps:

- 1** Create the remote agent boot disks using the Boot Disk Builder program. Refer to the Boot Disk Builder online Help file for instructions on creating the remote agent boot disks.

You will use the disks to boot the remote machine, so the computer running PartitionMagic can communicate with the remote machine.

- 2** Boot the remote machine using the Remote Agent boot disks you created in step 1.
- 3** Access the remote machine (using the **Connect Remote Agent** option) from the machine running PartitionMagic.

You are ready to perform operations between the Windows machine and the remote machine.

Partitions on the remote drive will appear in the tree view on the left side of the main window, so you can choose them like you would any local partition.



## Creating Remote Agent Boot Disks

You must create Remote Agent boot disks to run Remote Agent. You can create the disks with Boot Disk Builder or with a DOS batch file.

### **Boot Disk Builder**

Boot Disk Builder helps you build a boot disk to run Remote Agent. Boot Disk Builder is installed when you install PartitionMagic.

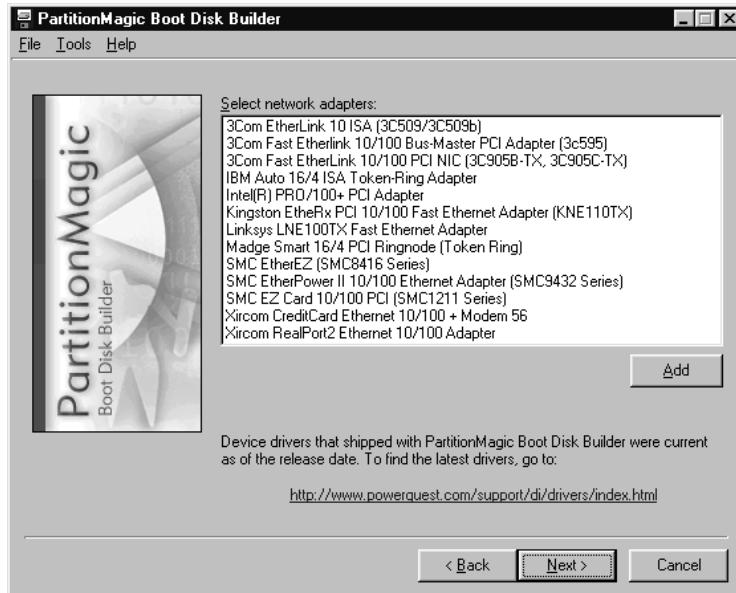
- 1 From the Windows taskbar, click **Start ► Program Files ► PartitionMagic 6.0 ► Boot Disk Builder**.



- 2 From the Boot Disk Builder window, click **Next**.

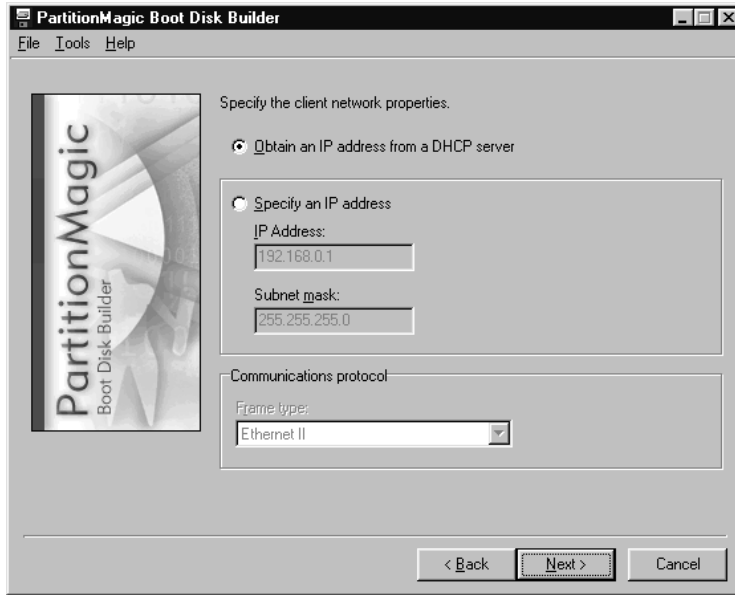
To retrieve a configuration file, click **File ► Load Configuration** from the main Boot Disk Builder screen, choose the configuration file (\*.BDC) you want, then click **Open**.

- 3 If your network adapter is listed, go to step 8. If your network adapter is not listed, click **Add**, specify the location of the driver information file (\*.INF) for your network adapter, then click **Next**.



- 4 Choose one or more adapters from the list, then click **Next**.
- 5 Specify the Novell NetWare DOS client driver file, then click **Next**.
- 6 Specify the Microsoft TCP/IP NDIS DOS driver file, then click **Next**.
- 7 Click **Finish**.
- 8 Select the network adapter you are using from the list box.

9 Click Next.

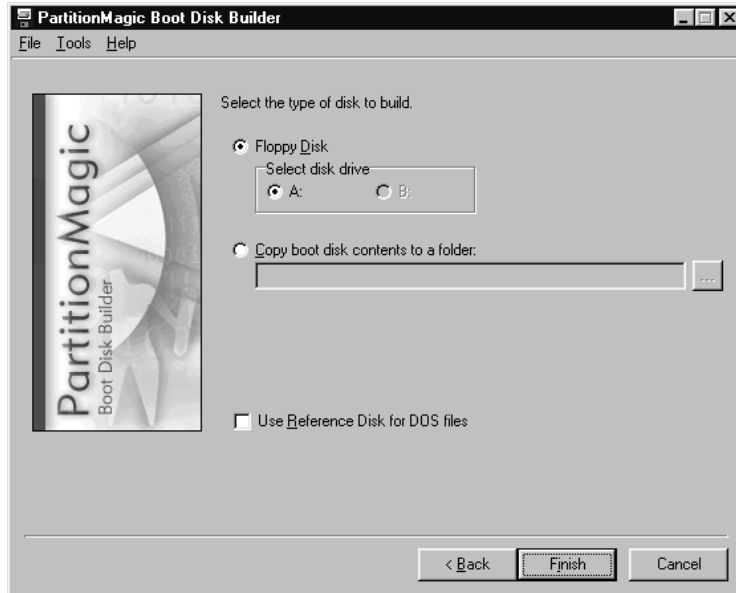


10 Click **Obtain an IP address from a DHCP server** if a DHCP server is used (the net mask and default gateway are automatically provided).

Or specify the IP address and subnet mask if there is no DHCP server.

Ethernet II will display as the frame type for your network.

**11** Click **Next**.



**12** Click the drive letter where you are creating the DOS boot diskette, or click **Copy boot disk contents to a folder** and specify the full path to the folder you want.

**13** Insert a formatted diskette.

If you have a boot disk and you want to use your regular DOS files instead of the Caldera DOS files included with Boot Disk Builder, complete the following items:

**a.** Insert your boot disk, then click **Tools ► Load DOS Reference Diskette ► From A:**. The files from your boot disk will be copied to a REFDISK directory where Boot Disk Builder is installed. If there are too many to include along with the necessary files that Remote Agent needs, you can delete everything but CONFIG.SYS and any drivers started within the CONFIG.SYS file.

**b.** Select **Use Reference Disk for DOS Files** at the bottom of the dialog.

**c.** Remove your original boot disk and insert a formatted disk that will become the Remote Agent boot disk. (If you do not remove your original disk, Boot Disk Builder will overwrite the files on it.)

**14** If you want to save your choices for later use, click **File ► Save Configuration**, then name and save the file.

**15** Click **Back** to make any changes, or click **Finish** to build the boot disk.

Depending on the network interface card selected, the network and Remote Agent files may require two diskettes. You will be prompted if a second diskette is needed.

After the boot disk has been created, you can create another boot disk.

When you use the boot disk, Remote Agent will start, and you can specify the IP address settings. You can then perform operations “across the wire.”

### ***Boot Disk Files***

The Remote Agent boot disk will contain the following files:

- NIC driver
- AUTOEXEC.BAT
- COMMAND.COM
- CONFIG.SYS
- HIMEM.SYS
- IBMBIO.COM
- KICKNIC.COM
- LSL.COM
- MOUSE.COM
- MOUSE.INI
- NET.CFG
- PING.EXE
- RA.EXE
- RAHELP.TXT
- WATTCP.CFG

If the remote machine has a bootable partition, you can copy the files from the boot disk to that partition and run the Remote Agent from the hard disk.

## **Using the Remote Agent Boot Disk**

- 1** Insert the RA boot disk into the floppy drive of the remote machine, and boot the machine.

The **Remote Agent** dialog appears. Notice that it is waiting for a connection from PartitionMagic on the Windows machine.

### ***Specifying the IP Address of the Remote machine***

The first time you run RA on the remote machine, you may need to specify network configuration settings.

- 1** From the **Remote Agent** dialog, click **Settings**.
- 2** Click **Obtain an IP address from a DHCP server** if a DHCP server is used.

Or, click **Specify an IP address**, then enter a static local address, net mask, and default gateway.




**3** Click **Save**.

The information you specify in the **Local Settings** dialog is saved in the WATTCP.CFG file on the boot disk.

Notice that the Remote Agent is now ready and waiting for a connection from PartitionMagic on a Windows machine. After a connection is established, you can send operations (such as copying a partition) from the Windows machine to the remote machine.

## Accessing a Remote Machine

After you have booted the remote machine using the Remote Agent boot disk, you are ready to access the remote machine from PartitionMagic on the Windows machine.

- 1 From the Windows machine, run PartitionMagic.
- 2 Click **General** ► **Connect Remote Agent**, or click  on the toolbar.
- 3 Type the local IP address of the machine running the Remote Agent.
- 4 Click **Connect**.
- 5 Choose the operations you want to perform on the remote machine.  
Operations that are not available are dimmed on the menu.

## Using PartitionMagic Utilities

*This chapter includes the following information:*

- Changing Drive Letter References with DriveMapper
- Changing Bootable Partitions with PQBoot

## Changing Drive Letter References with DriveMapper

When you create, merge, delete, hide, and unhide partitions, your drive letters can change, causing applications not to run because application shortcuts, initialization files, and registry entries refer to incorrect drives. DriveMapper is a wizard that lets you easily update drive letter references. DriveMapper does not change drive letter assignments; it only changes references to the drive letters, which are assigned by your operating system.

1 From the PartitionMagic main window, click **Tools** ► **DriveMapper**.

You can also click **Start** (on the Windows taskbar) ► **Programs** ► **PowerQuest PartitionMagic** ► **DriveMapper**.

DriveMapper also runs automatically if the following conditions are all met:

- You apply changes to your system that affect drive letter assignments.
- You are running Windows 95 or Windows 98.
- Your hard disk contains only FAT or FAT32 partitions.
- You have no more than one CD-ROM drive and no more than one removable drive.

If you are using Windows NT or Windows 2000 Professional as your only operating system, we recommend using the **Change Drive Letter** operation rather than DriveMapper. **Change Drive Letter** lets you permanently set the drive letters for your partitions so that adding and removing partitions does not affect drive letters. Note that if you merge or split partitions, drive letters will change even if you are using Windows NT/Windows 2000 and the Change Drive Letter operation.

If you have installed an alternative desktop on Windows 3.11 or Windows 95/98 with the desktop files residing on a different drive than the Windows system files, DriveMapper may not be able to adjust your paths. Because DriveMapper is a Windows program, it must have Windows loaded to run. If the drive letter has been changed for the drive that holds your desktop files, you may not be able to start Windows.

For further information about how operating systems assign drive letters, see the second paragraph under “Assigning a CD-ROM Drive Letter” on page 115.

### ***Using DriveMapper With Multiple Operating Systems***

If you run multiple operating systems, you should reinstall applications rather than use DriveMapper. The following issues make using DriveMapper in a multiple operating system environment difficult and error-prone:



- Drive letter assignments are based on the file systems supported by an operating system. If you do not put all FAT32, NTFS, and HPFS partitions after all FAT partitions, drive letters will change depending on the operating system currently running, and DriveMapper may be unable to correctly identify which changes should be made.
- Registry settings are changed for the current operating system only. If you rerun DriveMapper from another operating system, references in files will already be changed and further changes will introduce errors.
- When DriveMapper is running, files contained in hidden partitions are not updated. If you are using multiple primary partitions for different operating systems, only the active primary partition may be visible to be updated.

### **Changing Drive Letters in the Correct Order**

DriveMapper must change drive letters in the correct order to avoid destroying original references before they are used to make changes for other drive letters.

For example, assume you have two partitions on your hard disk (a primary partition C: and a logical partition D:) and a CD-ROM drive E:. Suppose you create a logical partition between C: and D:. The drive letter of D: changes to E:, and the drive letter of E: changes to F:; however, references in certain files (such as shortcuts) still reflect the original drive letter assignments. DriveMapper must first change the drive E: references to F: and then change the drive D: references to E:.

DriveMapper will automatically place changes in the proper order. PowerQuest strongly recommends that you apply changes in the order DriveMapper chooses.

### **Changing Bootable Partitions with PQBoot**

PQBoot is a quick and easy way to switch between bootable primary partitions. PQBoot is for users who only occasionally change the active partition and do not want to use BootMagic. For more information about BootMagic, see “Using BootMagic” on page 97.

- 1 (*Windows 95/98/Me or Windows NT workstation*) Click **Start ► Programs ► PowerQuest PartitionMagic 6.0 ► PQBoot**. Under Windows 95/98/Me, PQBoot32 will only run if PQVXD.VXD is in the same directory as PQBOOT32.EXE.

(DOS) Go to a DOS prompt. Change to the directory containing PQBOOT.EXE, then type PQBOOT.

- 2 If you are using Windows, a message appears indicating that PQBoot runs in MS-DOS mode and that all other programs will close if you continue. To continue, click **Yes**.
- 3 PQBoot displays a list of all primary partitions. Type the ID number of the partition (shown in the first column) you want to make the bootable primary partition.

Check the **Status** column to see if a partition is bootable.

- 4 Press <Enter>.

PQBoot makes the partition active and reboots the computer. If you need to maintain multiple, visible primary partitions under Windows NT, you should run PQBoot with the /M switch.

### **PQBoot Command Line Switches**

PQBoot offers several command line switches that are useful when you know the ID number or volume name of the partition you want to make active. To use a switch, run PQBoot from a DOS prompt. Supported switches include:

- /A marks a partition active without rebooting.
- /M maintains the hidden/visible status of each partition. If you have a Windows NT installation that looks for multiple, visible primary partitions, you should run PQBoot with the /M switch.
- /P:<number> selects the active partition using the partition's ID number.
- /S shows partition information, including ID numbers and volume names.
- /V:<label> selects the active partition using the partition's volume label.
- /? displays a brief description of the switches and examples of how to use them.

For example, to set the second available bootable partition active without rebooting, type  
PQBOOT /P:2 /A.

### **Running PQBoot with Command Line Switches**

- 1 Go to a DOS prompt.
- 2 Change to the directory containing PQBoot (typically C:\PROGRAM FILES\POWERQUEST\PARTITIONMAGIC\UTILITY\DOS).
- 3 (DOS) Type PQBOOT switch (where switch is the appropriate switch).  
(Windows 95 or later) Type PQBOOT32 switch.

## Using BootMagic

*This chapter includes the following information:*

- Getting Started
- Configuring BootMagic
- Setting BootMagic Passwords
- Adding an Operating System to the BootMagic Menu
- Removing an Item from the BootMagic Menu
- Modifying a Menu Item's Properties
- Setting a Default Operating System
- Setting the Startup Delay
- Disabling BootMagic
- Using the BootMagic Menu
- Other BootMagic Options

## Getting Started

PowerQuest's BootMagic is a powerful disk-management tool that helps you run multiple operating systems on a single PC. Each time you start or restart your computer, BootMagic presents a list of operating systems (OSs) you can boot from. The configuration program lets you quickly select the OSs you want to appear in the **BootMagic Menu** and lets you set various boot-time options such as a default OS and a startup delay.

With BootMagic, you can easily switch between OSs, using whichever OS best suits your immediate needs. You can even try out a new OS risk-free, knowing that your old OS is there, readily accessible when you need it.

### ***BootMagic System Requirements***

The following table lists the minimum and recommended system requirements for installing and using BootMagic.

<b>Hardware/Software</b>	<b>Minimum</b>	<b>Recommended</b>
<b>Processor</b>	Intel/486SX	486 or above
<b>RAM</b>	4 MB (Windows 9x and Windows NT/2000 require additional memory)	16 MB or more
<b>Hard-disk free space</b>	10 MB	10 MB
<b>CD-ROM drive</b>	Any speed	Any speed
<b>3.5-inch diskette drive</b>	3.5-inch diskette drive	3.5-inch diskette drive
<b>Operating system</b>	Windows 95, Windows 98, Windows Me, Windows NT 4.0, DOS 5.0 or later	Windows 95, Windows 98, Windows Me, Windows NT 4.0, DOS 5.0 or later
<b>Monitor</b>	VGA	Super-VGA
<b>Pointing Device</b>	None	Microsoft mouse (or compatible pointing device)

## **Supported Operating Systems**

BootMagic supports the following operating systems:

- Windows 98
- Windows 95
- Windows Me
- Windows NT 4.0
- Windows NT 3.51
- Windows 3.x (must be installed with DOS 5 or later)
- MS-DOS 5.0 or later
- Windows 2000
- PC-DOS 6.1 or later
- Open DOS
- OS/2 3.0 or later
- Linux
- BeOS
- Most other versions of DOS
- Some other PC-compatible OSs

## **Installing BootMagic**

You can install BootMagic from Windows 95, Windows 98, Windows Me, Windows NT 3.51 or 4.0, Windows 2000 Professional, and DOS 5.0 or later.

**IMPORTANT!** BootMagic must be installed to a FAT or FAT32 primary partition on the first hard disk. You must also boot from your first hard disk when installing BootMagic, or it will not work properly.

- 1** Insert the PartitionMagic CD in your CD-ROM drive.

In Windows 95, Windows 98, Windows Me, Windows NT 4.0, or Windows 2000, the setup program automatically starts when you insert the CD into the CD-ROM drive.

- 2** If you are installing from the PartitionMagic CD, select **Install** from the PartitionMagic setup screen and mark the BootMagic check box to launch the BootMagic install program.

If you are using DOS, type `drive:\ENGLISH\BTMAGIC\DOS\INSTALL.EXE` (where *drive* is the drive letter of your CD-ROM drive).

- 3** Follow the on-screen instructions to install BootMagic.

After installation, BootMagic sorts through your system's hard disks, looking at the partition tables and gathering information about each currently-installed operating system. BootMagic then automatically runs the configuration program, adding every detected OS to the **BootMagic Menu**.

At this point, it may be necessary for you to edit the items that appear in the menu list. While BootMagic reliably detects most OSs, it may also detect some non-OS partitions. For example, if you have a primary NTFS data partition (that is, a partition which contains only data, no OS) on the first disk, BootMagic may detect it as Windows NT. Likewise, an HPFS data partition may be detected as OS/2 and a primary FAT16 or FAT32 data partition may be detected as MS-DOS or Windows 95/98. Because data partitions cannot be booted, you should remove them from the menu list. You can also choose to add or remove other OS selections, modify OS names and icons for easier identification, add passwords, set a new startup delay, or select a different default OS.

For information on detecting non-OS partitions in the menu list, see “Finding the Right Operating System” in BootMagic’s online Help. For more information on using the configuration program, see “Configuring BootMagic” on page 101 in this guide or refer to online Help.

After you make any necessary changes, click **Save/Exit**. The next time you reboot your computer the **BootMagic Menu** appears. To start an OS, simply select the desired menu item from the **BootMagic Menu**.

### **Creating a BootMagic Rescue Disk**

During installation, you have the option to create a BootMagic rescue diskette. (DOS users should run *drive:\BTMAGIC.PQ\MKRESCUE.BAT* after the BootMagic DOS install to create the rescue diskettes.) This diskette is vital if your system’s master boot record (MBR) is ever damaged or overwritten. It can also be helpful if you inadvertently disable BootMagic and cannot access the configuration program to re-enable it.

**WARNING!** Technical support may not be able to assist you if you have not created a rescue disk.

To launch BootMagic’s configuration program from the rescue diskette, boot from the rescue diskette and follow the on-screen instructions.

Once in the configuration program, you can make any needed modifications or additions. When you click **Save/Exit** to exit the configuration program, BootMagic re-saves all the necessary files and rewrites the MBR, thereby restoring the program to normal.

### **Getting Help**

If you need more information than this chapter provides, you can refer to the BootMagic online Help.

- To access Help in the Windows configuration program, select **Help ► Contents** from the menu bar.

- To access Help in the DOS configuration program, select **Help ► Topic List** from the menu bar.
- To access context-sensitive Help, click **Help** in the lower-right corner of most dialogs, or press <F1>.

If you need further assistance, you can contact PowerQuest Technical Support. See “Contact Information” on page 142.

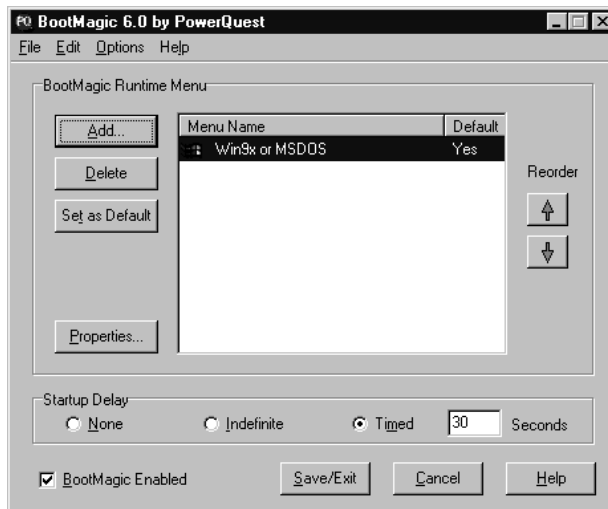
## Configuring BootMagic

BootMagic’s configuration program consists of two versions, one for DOS and one for Windows 95/98 and Windows NT Workstation. Both versions have similar interfaces and offer the same functionality.

BootMagic’s configuration program may be manually launched by any of the following:

- In Windows, select **Start ► Programs ► PowerQuest BootMagic ► BootMagic Configuration**.
- In DOS, run `drive:\BTMAGIC.PQ\CONFIG.BAT`.
- On the PartitionMagic main screen, click **Tools ► BootMagic Configuration**.

When you run the configuration program, the BootMagic main window appears.



From this window, you can set a password for the configuration program, the BootMagic Menu or specific menu items; add or remove an OS to the BootMagic Menu; modify an operating system's BootMagic properties; set your default operating system; set the startup delay; or disable BootMagic. Each of these options are briefly covered in this chapter. For further information about configuring BootMagic or for details for each step outlined below, please refer to BootMagic's online help.

## Setting BootMagic Passwords

BootMagic now allows users to password protect the BootMagic configuration program, the **BootMagic Menu**, or even specific menu items.

To set a password for the configuration program or the **BootMagic Menu**, follow these steps:

- 1 In the **BootMagic main window**, click the **Options** menu.
- 2 Select **Set Configuration Password** to password protect the configuration program or **Set Boot-time Password** to password protect the BootMagic menu.
- 3 Enter the current password in the **Old password** text box.  
The **Old Password** text box will be blank and disabled when there is no prior password.
- 4 Enter the new password in the **New password** text box.
- 5 Retype the new password in the **Confirm new password** text box.
- 6 Click **OK**.

To clear a password, enter the old password and leave the new password fields blank.

To set a password for specific **BootMagic Menu** items, you must modify the menu item's properties. For more information, see "Modifying a Menu Item's Properties" on page 104 or refer to BootMagic's online Help.

## Adding an Operating System to the BootMagic Menu

- 1 In the BootMagic main window, click **Add**.  
The **BootMagic Add OS** dialog appears.



**2** (Optional) To view all your system's partitions, including those that BootMagic does not recognize as containing an OS, mark the **Advanced** check box.

**3** Select the OS you wish to add to the BootMagic menu.

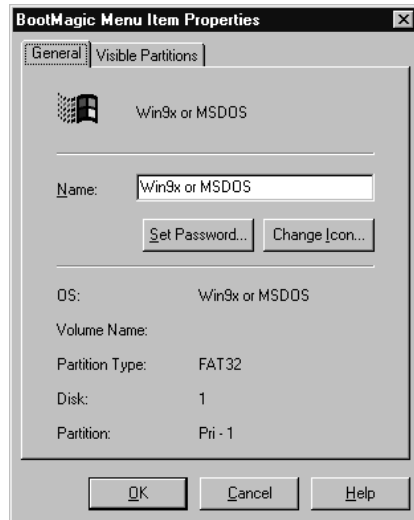
BootMagic may sometimes detect an OS that doesn't exist or may detect the wrong name for an existing OS. For help on finding the operating system and partition you want, see "Finding the Right Operating System" in BootMagic's online Help.

**WARNING!** Do not add non-OS partitions to the BootMagic menu. You cannot boot your computer from a partition without an OS. If you add a partition that doesn't have an OS and try to boot, you will be left with a black screen.

In this event, soft boot your computer (press **Ctrl-Alt-Delete**), boot DOS or Windows from the BootMagic menu, run the BootMagic configuration program, and remove the non-OS menu item from the BootMagic menu.

**4** Click **OK**.

The **BootMagic Menu Item Properties** dialog appears.



**5** Define the menu properties as desired, and then click **OK**.

For more information on defining runtime menu properties, see "BootMagic Menu Item Properties" in BootMagic's online help.

## Removing an Item from the BootMagic Menu

- 1 In the BootMagic main window, select the item you wish to delete from the **BootMagic Runtime Menu** list.
- 2 Click **Delete**.

Deleting an OS from the BootMagic menu does not remove the OS from your system. The OS remains in its partition and can be added again to the menu if desired.

## Modifying a Menu Item's Properties

- 1 In the BootMagic main window, select the item you wish to modify.
- 2 Click **Properties**.
- 3 Modify the properties as desired, then click **OK**.

For a description of each property, see “BootMagic Menu Item Properties” in BootMagic’s online help.

## Setting a Default Operating System

BootMagic automatically selects the OS on the home partition (that is, the partition on which BootMagic is installed) as the system default. This is the OS that BootMagic automatically boots if another OS is not chosen before the startup delay expires, or if the startup delay is set to **None**.

For more information on the startup delay, see the next section, “Setting the Startup Delay.”

- 1 In the BootMagic main window, select the operating system you wish to set as the system default.
- 2 Click **Set as Default**.

## Setting the Startup Delay

By default, BootMagic uses a Timed startup delay set to 30 seconds. You can change the startup delay.

- Select **None** to eliminate any time delay. BootMagic automatically boots the default OS at startup without displaying the **BootMagic Menu**.
- Select **Indefinite** to specify an unlimited time delay. BootMagic displays the runtime menu until you choose the OS you wish to boot.
- Select **Timed** to designate a time delay from 1 to 99 seconds. BootMagic waits the specified amount of time for an OS to be chosen before booting the default OS.

If you set the startup delay to either **None** or **Timed**, you must also ensure that a valid OS item is selected as the system default. Without a default OS, BootMagic cannot boot your system.

If you set the startup delay to **None** and select a default OS that cannot run the BootMagic configuration program, you will be unable to modify the configuration settings and boot other OSs. If this happens, boot your computer while holding down the left **Shift** key. This overrides the timer settings and opens the **BootMagic Menu** without a timer (as the **Indefinite** option) for that one boot.

You can then select DOS or Windows from the BootMagic menu, run the BootMagic configuration program, and change either the default OS or the startup delay.

## Disabling BootMagic

You may encounter situations in which you want to disable BootMagic. For example, if you are diagnosing an OS startup problem and need to reboot your system multiple times, you may wish to bypass loading BootMagic every time. Disabling BootMagic replaces the BootMagic master boot record (MBR) with a copy of your original MBR.

Disabling BootMagic does not destroy any of your configuration settings. All of the current settings are saved until BootMagic is re-enabled.

- 1** Unmark the **BootMagic Enabled** check box in the BootMagic main window.

The configuration options become unavailable, and BootMagic remains disabled until the box is re-checked.

- 2** Click **Save/Exit** to save your changes and exit the configuration program.

When you reboot your computer, BootMagic no longer loads and the default OS is automatically booted.

To re-enable BootMagic, run the configuration program from either your hard drive or the BootMagic rescue diskette. Mark the **BootMagic enabled** check box in the BootMagic main window. When BootMagic is re-enabled, it saves a copy of the current MBR and then reinstalls the BootMagic MBR. Upon reboot, BootMagic loads normally and all the previous configuration settings are restored.

For more information on creating a BootMagic rescue disk, see “Creating a BootMagic Rescue Disk” on page 100.

## Using the BootMagic Menu

Once installed, the BootMagic menu appears each time you start your computer. The BootMagic menu displays all the OSs configured for booting. Each OS is identified by its user-assigned name and icon. Although BootMagic automatically highlights the default OS, you can choose any of the listed OSs. Simply click the OS you want to boot. You can also use your arrow keys to select an OS and press <Enter>.

If the OS you want is not listed, you can run the BootMagic configuration program and add it to the menu. For more information on adding an OS to the menu list, see “Adding an Operating System to the BootMagic Menu” on page 102.

## Other BootMagic Options

In addition to making it easy to choose from multiple operating systems when you boot your machine, BootMagic makes installing multiple OSs on your system easy. For information on installing to primary or logical partitions, see “Using BootMagic to Install a New Operation System” in BootMagic’s online help. You may also want to refer to the help topic on OS-specific installation issues.

BootMagic also enables you to boot operating systems that are not on the first hard disk. For specific instructions on second drive booting and beyond, see help topics “Booting Operating Systems from a Second Drive” and “Third Drive Booting and Beyond.”

Other new BootMagic features include Advanced Partition Hiding (that is, hiding all primary partitions on all disks except the primary partition being booted) and an option to change the BootMagic background screen to a customized, Windows format bitmap. Refer to the BootMagic online help for comprehensive information about BootMagic features that are not discussed in this chapter.

# A

## **Using PartitionMagic With Other Programs**

*This appendix includes the following information:*

- Norton Utilities
- Disk Compression Utilities
- Operating System Boot Utilities
- Virus Protection Software
- Drive Overlay Programs
- SoundBlaster

## Norton Utilities

You can safely use PartitionMagic and Norton products together. The following information will help you avoid any problems.

### **Norton Disk Doctor**

If an extended partition ends at the end of a drive, Norton Disk Doctor (NDD) will sometimes display this message: “An extended partition has invalid parameters and probably is inaccessible. Correct this situation if you are unable to access partitions on hard disk 1. Do you wish to correct this problem?” To eliminate this message, use PartitionMagic to resize the logical and extended partitions at the end of the drive to leave some free space before the end of the drive.

Additionally, when you delete, move, or resize partitions, it appears to NDD that you could have inadvertently deleted a partition. NDD displays the following message: “If you are unable to access a disk that you previously could, you should revive this partition. Would you like to revive this partition?” If you inadvertently deleted a partition, select **Yes**. If you do not want this message to appear every time you run NDD, complete the following:

**1** Click **No**.

NDD displays this message: “You have chosen not to revive the partition. Do you want Norton Disk Doctor to mark the partition so it doesn’t ask about it again?”

**2** Click **Yes**.

The **Create Undo File** dialog appears.

**3** Click **Skip Undo File**. (Creating an undo file uses many diskettes.)

NDD displays this message: “If you wish to undelete this partition at a later time, use the /UNDELETE switch.”

**4** Click **OK**.

NDD displays this message: “Partition information has been changed. Would you like to restart your computer?”

**5** Click **Restart Your Computer**.

## **Norton AntiVirus**

Because Norton AntiVirus (NAV) interprets changes to partition tables and boot records as potential virus attacks, PartitionMagic takes steps so that NAV automatically reinoculates. Should NAV give you the choice of repairing the changes, *do not* select **Repair**. Instead, inoculate after using PartitionMagic.

## **Norton SystemWorks**

You can use PartitionMagic on a system where Norton SystemWorks is installed. However, you must run PartitionMagic from the rescue disks. If you attempt to run PartitionMagic under Windows with Norton SystemWorks installed, you will receive a disk-write error.

## **Disk Compression Utilities**

You can safely use PartitionMagic and some disk compression utilities together. The following information will help you avoid any problems.

**WARNING!** Do not merge compressed partitions. You will lose the host partition.

### **DriveSpace and DriveSpace 3**

To use PartitionMagic with DriveSpace, you must first change the size of a DriveSpace or DriveSpace 3 drive in Windows 95 or Windows 98 by completing the following:

- 1** On the Windows desktop, double-click **My Computer**.
- 2** Right-click the drive you wish to alter.
- 3** Select **Properties** on the context menu.
- 4** Click the **Compression** tab.
- 5** From the **Compression** menu, select **Advanced**.
- 6** In the **Advanced Properties** menu, select **Run DriveSpace**.  
A list of your physical drives, compressed drives, and host drives appears.
- 7** Choose the compressed volume you wish to change.
- 8** At the top of the menu, click **Drive**.
- 9** From the **Drive** menu, click **Adjust Free Space**.

The **Adjust Free Space** menu appears. At the bottom of the menu is a slide bar.

- 10** To increase compressed space (enlarge the compressed volume), move the slide bar to the left. To increase uncompressed space (shrink the compressed volume), move the slide bar to the right.

If you wish to shrink the host for a compressed drive, move the bar to the right to create more uncompressed space on the host. You can then use PartitionMagic's Resize/Move operation to make the host partition smaller. If you have already resized the partition larger and want to add more space to the compressed volume, move the slide bar to the left.

## Operating System Boot Utilities

Both OS/2's Dual Boot and System Commander 2.0 and above accommodate boot sector changes made by PartitionMagic. To install System Commander on drives that PartitionMagic has modified, you may need to use System Commander 2.06 or later.

If you have System Commander on your computer, you must configure it so that it does not simultaneously unhide multiple primary partitions. To configure System Commander so that it does not create multiple visible primary partitions, complete these steps for each operating system selection on the System Commander menu:

- 1** On the **Operating System Selection** menu, select an operating system.
- 2** Press <Alt+S>.
- 3** From the resulting menu, select the **Local Special Options** menu.
- 4** Click **Primary partitions accessible on drive 0**.

A screen appears with three options: **ALL**, **AUTO**, and **NONE**. **AUTO** is the default. Select **NONE**.

The other primary partitions will now be hidden when this operating system boots.

- 5** Repeat this procedure for all operating system selections on the menu.

## Virus Protection Software

PartitionMagic modifies the master boot record and partitions' boot sectors. Virus protection software should be able to detect that PartitionMagic is changing partition tables and not boot code; however, it is possible that unsophisticated virus protection



programs may mistake PartitionMagic changes as attempts to install a virus. If this occurs, turn off the virus protection program while using PartitionMagic and inform the virus protection software manufacturer of the problem.

Some motherboards contain virus protection software within the BIOS. If this causes a problem when you are running PartitionMagic, disable the BIOS virus protection, and then restart PartitionMagic.

## Drive Overlay Programs

Drive overlays, such as Ontrack DDO, Microhouse EZ-Drive or Pro-Drive, Maxblast, WD DDO, and Seagate DDO, provide your computer with access to larger disk drives. PartitionMagic is compatible with these programs only if the drive overlay program is loaded before PartitionMagic.

If you boot your computer from a diskette, the overlay will not load, and PartitionMagic will not get the correct information from your drive. You can boot from a diskette and still load the drive overlay by completing the following:

- 1** Start your computer as if you were going to boot from the hard disk.
- 2** When prompted, press **<Space>** or **<Ctrl>**.
- 3** The drive overlay information appears with an option of booting from a diskette. Select this option and insert the boot diskette when prompted.

## SoundBlaster

The DOS drivers for a SoundBlaster Live sound card may conflict with PartitionMagic operations that require going into boot-mode. PowerQuest recommends that you unload the SoundBlaster drivers (by remarking them in your CONFIG.SYS and AUTOEXEC.BAT files) until after you have finished using PartitionMagic.



# Troubleshooting

*This appendix includes the following information:*

- General Troubleshooting

*Freeing Memory to Run PartitionMagic under DOS*

*Assigning a CD-ROM Drive Letter*

*Using PartitionMagic With a SCSI Hard Disk*

*PqRP Partitions*

*Resolving Check Errors*

*Resolving Partition Table Errors*

*Partition Tables and Viruses*

*Partition Will Not Boot After Resizing*

- Generating Diagnostic Reports with PartitionInfo
- Error Messages and Solutions

## General Troubleshooting

This section addresses the following situations:

- Freeing Memory to Run PartitionMagic under DOS
- Assigning a CD-ROM Drive Letter
- Using PartitionMagic With a SCSI Hard Disk
- PqRP Partitions
- Resolving Check Errors
- Resolving Partition Table Errors
- Partition Tables and Viruses

### ***Freeing Memory to Run PartitionMagic under DOS***

The DOS PartitionMagic executable requires a minimum of 585 KB of memory in the first 640 K of the computer's address space (conventional memory). If you do not have sufficient conventional memory, there are several ways you can free additional memory.

#### **Running MEMMAKER**

MEMMAKER is a program that automatically configures your computer to save conventional memory (while still loading all of the device drivers and other programs you usually load when booting DOS). MEMMAKER frees conventional memory by moving as many programs as possible out of conventional memory into high memory. Run MEMMAKER by typing MEMMAKER at a DOS prompt. Follow the on-screen instructions.

MEMMAKER is only available in DOS 5.0 to 6.22. It is not available in Windows 95 or Windows 98 DOS mode.

#### **Using the F8 Key to Keep Programs From Loading**

Press <F8> immediately after booting your computer (while DOS is booting). As DOS reads each command in the CONFIG.SYS and AUTOEXEC.BAT files, it asks if you want the command executed. When you see commands that load device drivers or TSR programs not needed to run PartitionMagic, press <N> so that the software is not loaded into memory.

## Deleting Operating System Compression Files

If you use DOS 6.22, Windows 95, or Windows 98 and your system does not have any compressed drives (using programs such as DriveSpace, DoubleSpace, and Stacker), you can delete the operating system compression files, DRVSPACE.BIN or DBLSPACE.BIN, from any boot diskette you create. This frees conventional memory because DOS 6.22, Windows 95, and Windows 98 load these files into memory, regardless of the contents of CONFIG.SYS and AUTOEXEC.BAT.

DRVSPACE.BIN and DBLSPACE.BIN are hidden system files. To delete them, complete the following:

- 1 Place your boot diskette in your diskette drive.
- 1 Go to a DOS prompt.
- 2 Type **A:** and press **<Enter>**. You should see **A:\>** on your screen.
- 3 Type **ATTRIB -R -H -S \* .BIN**, and press **<Enter>**.
- 4 Type **DEL \* .BIN** and press **<Enter>**.

## Assigning a CD-ROM Drive Letter

If your computer has a CD-ROM drive or any form of removable media, you should be aware of potential problems caused by the way drive letters are assigned to these devices.

Under Windows NT, you can change drive letter assignments with PartitionMagic; otherwise, this is a function of the operating system. The operating system assigns drive letters in this order: (1) the first recognized primary partition on each hard disk, (2) all logical partitions on each hard disk, (3) any other primary partitions on each hard disk, and (4) the CD-ROM drive and any other forms of removable media.

Generally, all removable media should be assigned drive letters after fixed disks.

Because the CD-ROM is one of the last drives to receive a letter, any partition you create or delete on any of your hard disks affects the drive letter assignment of your CD-ROM drive. Occasionally, the operating system may not assign a drive letter to the CD-ROM drive. If this occurs, complete the steps outlined below.

If you are using Windows 95/98 and Windows 95/98 drivers for the CD-ROM:

- 1 On the toolbar, click **Start > Settings > Control Panel**.
- 2 Double-click **System**.
- 3 Click the **Device Manager** tab.

- 4** Double-click **CD-ROM**.
- 5** Double-click the name of your CD-ROM drive.
- 6** Select the **Settings** tab.
- 7** In the **Start drive letter** and **End drive letter** boxes, type or select **Z**. Because the OS assigns all other available drive letters before assigning Z, this ensures that partition changes you make in the future do not invalidate your CD-ROM drive letter.
- 8** Click **OK** to close the **Settings** page.
- 9** Click **OK** to close the **System Properties** dialog.
- 10** When prompted to restart your computer, click **Yes**.

If you are using DOS or Windows 3.x or are loading your CD-ROM drivers under DOS with Windows 95/98:

- 1** Go to a DOS prompt.
- 2** Type `EDIT C:\CONFIG.SYS`.  
Your CONFIG.SYS file opens in the DOS editor program. Look for this line:  
`LASTDRIVE=drive` (where *drive* is any letter of the alphabet). Change *drive* to **Z**. This allows the OS to assign all drive letters through Z.
- 3** If your CONFIG.SYS file does not contain the `LASTDRIVE=drive` statement, you can add it by simply typing `LASTDRIVE=Z`.
- 4** Select **File > Exit**.
- 5** When you are prompted to save the file, select **Yes**. You should be back to a `C:\>` prompt.
- 6** Type `EDIT C:\AUTOEXEC.BAT`.
- 7** Your AUTOEXEC.BAT file opens in the DOS editor program. Look for a line that includes the word "MSCDEX." The `/L:drive` parameter (where *drive* is the drive letter assigned to your CD-ROM before you made changes with PartitionMagic) may appear at the end of this line. Change *drive* to **Z**. Because the OS assigns all other available drive letters before assigning Z, this ensures that partition changes you make in the future do not invalidate your CD-ROM drive letter. For more information, type `HELP MSCDEX` at a DOS prompt.

If your computer is on a network, when you log in to the network, the letter "Z" and other letters at the end of the alphabet may be assigned to network search drives. In this case, assign your CD-ROM a letter immediately preceding the last letter used by the network search drives.

- 8 Select **File > Exit**.
- 9 When you are prompted to save the file, select **Yes**.
- 10 When you see the DOS prompt (C:>), reboot your machine.

### ***Using PartitionMagic With a SCSI Hard Disk***

To use PartitionMagic on a SCSI hard disk, you must have a SCSI controller card that supports software Interrupt 13. Most SCSI controller cards let you enable software Interrupt 13 support in the BIOS through the card. If your SCSI controller card does not, contact the manufacturer to determine if your adapter can support software Interrupt 13. As a general rule, if you are able to use FDISK to partition the disk, you will also be able to use PartitionMagic.

### ***PqRP Partitions***

If your computer fails during a PartitionMagic operation, you may see a partition that displays as PqRP or PQFLEX in the partition list in the main screen. PartitionMagic flags a partition with a PqRP file system and a PQFLEX label, so you know that the partition has been modified. You should assume that a PqRP partition is not stable. Contact PowerQuest technical support for help in recovering data from a PqRP partition.

### ***Resolving Check Errors***

PartitionMagic checks the integrity of a partition thoroughly before making changes to it. The Check for Errors and Info operations perform the same checks and display error messages when they discover problems. For more information, see “Checking Partitions for Errors” on page 48 and “Getting Information About Partitions” on page 54. These checks are similar to those made by an operating system’s CHKDSK, ScanDisk, or AUTOCHK utility.

PartitionMagic also checks a partition after modifying it. While data loss is possible, it is not typical. The problem is usually a minor file system error that CHKDSK /F /R (or ScanDisk, if you are using Windows 95/98) can correct without data loss. For more extensive errors, you may need to restore your files from a backup copy. If problems persist, report the problem to PowerQuest technical support.

If you receive a Check error message on any partition, back up your hard disk and then run your operating system’s CHKDSK program on that partition (do not use the /F switch on the initial run). If you have MS-DOS 6.x, Windows 95, or Windows 98, run ScanDisk. CHKDSK and ScanDisk generally discover the same problems as PartitionMagic (except that the DOS CHKDSK program does not detect problems in Extended Attributes).

If CHKDSK or ScanDisk does not show the same errors as the Check for Errors operation, contact PowerQuest technical support.

If CHKDSK or ScanDisk and the Check for Errors operation detect the same errors, which is usually the case, run CHKDSK with the /F switch or run ScanDisk to fix the problems. Then run CHKDSK again without the /F switch to ensure that the partition is error free. Under OS/2, perform this procedure (running CHKDSK without /F) twice.

When CHKDSK reports no errors on the partition, run the Check for Errors operation. If PartitionMagic still reports a problem, reformat the partition and restore your files from the backup copy.

### ***Resolving Partition Table Errors***

Partition table errors are errors in the 100 - 199 range. In most cases, you must resolve partition table errors by creating new, error-free partition tables. The general steps are: (1) ensure you have no viruses (see below), (2) back up the data on the affected partitions, (3) delete the partitions, (4) recreate them, and (5) restore their contents. You may need to use the FDISK program from a recent DOS version, as earlier versions may refuse to delete HPFS or hidden partitions, and the OS/2 FDISK program may recognize the partition's corruption and refuse to modify it.

In some cases, you can resolve partition table errors manually. Run PartitionInfo to determine the errors on your partitions. PowerQuest technical support can help resolve partition table errors if you e-mail the PartitionInfo report to [help@powerquest.com](mailto:help@powerquest.com). Refer to "Generating Diagnostic Reports with PartitionInfo" on page 119 for additional information about PartitionInfo.

### ***Partition Tables and Viruses***

If partition changes made under one operating system are not reflected under another, and vice versa, a master boot record (MBR) virus may be present.

Use a virus check utility that can detect the latest viruses. If a virus is found, data loss is likely. Before removing the virus, boot each operating system and use the Check for Errors operation to evaluate the integrity of the partition. Back up the files on any partition that passes the Check for Errors operation. Then remove the virus and perform the Check for Errors operation on the partitions again. Delete and recreate any partitions that fail the check. Finally, reinstall the operating systems and restore the backup files as necessary.



## **Partition Will Not Boot After Resizing**

Occasionally, resizing a FAT partition displaces the first few files on the partition (such as IO.SYS and MSDOS.SYS if the partition contains an operating system). If you resize a boot partition and then it fails to boot, run SYS.COM from DOS or from the PartitionMagic rescue disks.

## **Generating Diagnostic Reports with PartitionInfo**

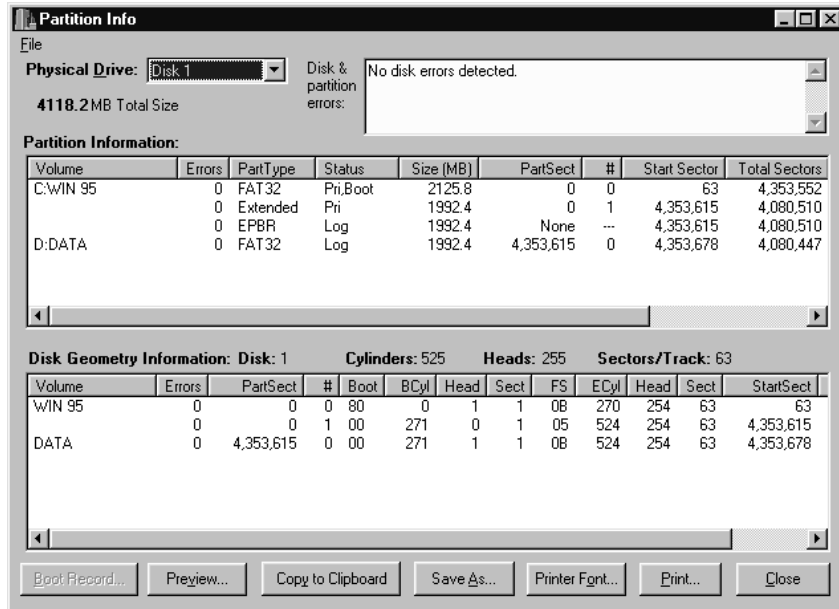
PartitionInfo generates a report showing the contents of your hard disk partition table. This information is helpful in resolving various partitioning problems.

You can run PartitionInfo under Windows 95, Windows 98, Windows Me, Windows NT 4.0 Workstation, and Windows 2000 Professional. If you are using DOS or Windows 3.x, run PARTINFO.EXE (see page 121).

Every time you run PartitionMagic, it creates a snapshot file PQ\_DEBUG.TXT that includes information about all the disks and partitions on your machine. The file is saved in the Windows\System folder (for Windows 95/98) or the %system root%\system32 directory (for Windows NT/2000). The PQ\_DEBUG.TXT file may be beneficial for PowerQuest technical support if you call PowerQuest for help resolving problems with PartitionMagic.

### **1 Click Start ► Program Files ► PowerQuest PartitionMagic 6.0 ► PartitionInfo.**

The PartitionInfo window appears, displaying partition and disk geometry information and disk and partition errors. Disk geometry information includes data from the master boot record and the extended partition boot records.



Only errors that display in the box near the top of the screen indicate problems. Do not be concerned with Warnings and Infos in the bottom two boxes.

- 2** From the **Physical Drive** drop-down list, select the disk for which you wish to view information.
- 3** You can save the PartitionInfo report as a file, or you can print it.

**To do this:**

**Do this:**

Save the report as a file

Click **Save As**. In the Filename box, type a name for the file. Click **Save**. (Columns of information are separated by tabs, so you can open the file in a word processor and easily format the report.)

To change the font for a printed report

Click **Printer Font**. Select the desired font, font style, size, and so forth. Click **OK**.

To change printer setup

Click **File ► Printer Setup**. We recommend that you set the page orientation to landscape to avoid text being cut off at the right margin.

To do this:	Do this:
To print a report	Click <b>Print</b> , then click <b>OK</b> .

**4** To exit PartitionInfo, click **Close**.

### **Generating Diagnostic Reports with PARTINFO.EXE**

You can also run PARTINFO.EXE from the second rescue disk to get partition information. The PARTINFO program provides essentially the same information as the PartitionInfo program but without the GUI interface.

- 1** Boot the computer to DOS.
- 2** Insert the second rescue diskette.
- 3** You have several options for running PARTINFO.

To do this:	Do this:
To display partition information on your screen	Type PARTINFO, then press <Enter>.
To send a report directly to your printer	Type PARTINFO >LPT1 or PARTINFO >PRN, then press <Enter>.
To save the report as a text file on a floppy disk	Type PARTINFO >A: \PARTINFO.TXT, then press <Enter>.

## **Error Messages and Solutions**

PartitionMagic error messages and possible solutions are listed below by number. The messages are also grouped in number ranges by error category.

If you encounter an error not mentioned in this appendix, visit PowerQuest's web site at [www.powerquest.com/support/ER/er-0000.html](http://www.powerquest.com/support/ER/er-0000.html) for a current listing. Error message information on the web site is available in English only.

## **Miscellaneous Errors (3–38)**

### **#3 Not enough memory**

This error can occur when you are resizing, moving, or copying an extremely large partition (60 GB) or when manipulating smaller partitions in DOS with EMM386 loaded. EMM386 limits the amount of memory the program can access. To solve the problem, modify your CONFIG.SYS file by commenting the EMM386 line. For more information about memory requirements, see “PartitionMagic System Requirements” on page 6.

The DOS PartitionMagic executable requires a minimum of 585 KB of memory in the first 640 KB of the computer’s address space (conventional memory) and 8 MB of total memory. For possible solutions if you have insufficient conventional memory, see “Freeing Memory to Run PartitionMagic under DOS” on page 114.

You may be able to resolve this problem by rebooting to an A: prompt, typing LOCK\_C:, and running PartitionMagic from the rescue disks.

### **#8 Could not allocate/deallocate DOS real mode memory**

The DOS PartitionMagic executable running under DOS, Windows 3.x, Windows 95, and Windows 98 requires some memory in the first 1 MB of the computer’s address space (PartitionMagic uses a DOS extender). If not enough memory is available, PartitionMagic cannot access the hard disk. For possible solutions, see “Freeing Memory to Run PartitionMagic under DOS” on page 114.

### **#27 Cannot lock drive**

Under multitasking operating systems such as Windows 95, PartitionMagic must lock a partition before it can safely modify it. If the hard disk contains files that are in use by another process, PartitionMagic cannot lock the partition.

### **#29 Cannot lock a locked drive**

Verify that the partitions you are attempting to modify are not on a locked hard disk.

### **#34 The Beta version is no longer safe to use**

PowerQuest occasionally releases beta versions and evaluation versions of PartitionMagic. Both versions are not as safe as release versions; therefore, PowerQuest builds an expiration date into each version. After a predetermined test period, the beta or evaluation version no longer functions.

## **Disk Access Errors (40–56)**

Errors in the 40–56 number range indicate that accessing your disk is not possible, and often result from hardware problems. Some problems may have simple solutions; for others, the only solution may be replacing the hard disk. When possible, PartitionMagic detects major errors before any changes have been made so you can back up your data before replacing the hard disk.

### **#45 CRC error in data**

When PartitionMagic or any other program reads information off of a hard disk, it checks the CRC (cyclic redundancy check) information contained in each sector. If it performs a CRC test and the result is different from the value stored on that sector, there is a CRC error. This usually means one of two things.

- The file being read has become corrupted by some other means.
- A sector used in the file's storage has become bad and corrupted that part of the stored file.

The solution is to do a surface test to make sure any bad sectors are marked as bad, then reinstall the software involved to ensure that files on the system are not corrupted. You may also want to try running PartitionMagic with an /IRE switch.

### **#48 Sector not found**

This error can be reported when a given sector cannot be read or written to. There are many possible causes.

If you are encountering this error, make sure that your BIOS supports the operating system and hard disk on the system. Also run a thorough ScanDisk on the drive to prevent data from being written to bad sectors.

### **#49 Write fault**

### **#50 Read fault**

(The following information applies to errors 49 and 50.)

PartitionMagic is unable to write to/read from a specific sector on the hard disk. Possible causes include:

- If your PC beeps or displays a black box in the middle of the screen, virus protection is enabled in your computer's BIOS. Disable virus or boot sector protection in the BIOS.
- A virus protection application (which may be a TSR or DLL program) is in use. Disable the application before using PartitionMagic.

- There is a bad sector on the hard disk (this is usually the case only with older hard disks). Run ScanDisk on the hard disk to perform a surface scan to verify the existence of bad sectors. If your drive has bad sectors, we recommend you replace it.
- You have set up disk mirroring with PC-Tools. Disable the disk mirroring option.

### ***Miscellaneous Errors***

#### **#70 Windows was deleted**

If you are using Windows 3.x, you must create PartitionMagic rescue disks and run PartitionMagic for DOS.

#### **#89 EZ-Drive has been detected on the drive but EZ-Drive is not running**

#### **#90 EZ-Drive has been detected on the drive but EZ-Drive is corrupt**

#### **#91 Disk Manager has been detected on the drive but is not running**

These errors are “first head” errors. They can be resolved with assistance from PowerQuest technical support. Before calling technical support, please type the following at a DOS prompt: `wrprog /bak >x:head1.dat`, where `x` is one of the drives on your machine.

The `wrprog.exe` file can be found in the `Utility\DOS` folder under your PowerQuest product folder. If you are running under Windows NT and do not have DOS available, you can use the DOS rescue diskettes you created for your PowerQuest software.

#### **#98 Hibernate Windows 2000**

#### **#99 Hibernate Windows Me**

Hibernation saves the system RAM to a file, then uses Advanced Power Management to shut the system down. When the machine is subsequently booted, the hibernation file is read into RAM, and execution begins where it left off.

A hibernated system assumes when it is booted that the system is in the same state as when hibernation occurred. Any changes made to the system’s hardware (including disks and disk partitions) may cause unexpected results.

See Microsoft’s Knowledge Base article #241354 for more information about making modifications to a system while in hibernation mode.

To avoid this error, shut down your machine normally and then restart.

## **Partition Table Errors (100–199)**

Errors in the 100–199 number range are partition table errors. For general information about resolving these errors, see “Resolving Partition Table Errors” on page 118 and “Partition Tables and Viruses” on page 118.

### **#100 Partition table is bad**

The master boot record (MBR) can contain, at most, one extended partition, and each extended partition boot record (EPBR) can contain, at most, one link to another EPBR. This error occurs when a partition table violates the foregoing rule. It can also occur if you have more than one active partition. Since any modifications PartitionMagic makes may decrease the amount of data that is recoverable from the hard disk, PartitionMagic does not recognize any of the hard disk’s partitions. If you must create new, error-free partition tables to resolve your problem, see “Resolving Partition Table Errors” on page 118 for instructions.

### **#104 No sectors in partition**

No partition should contain zero sectors. Delete the partition before using PartitionMagic.

### **#105 Partition starts on wrong boundary**

The hard-disk partition table contains erroneous values. PartitionMagic expects partitions to begin and end on the correct cylinder boundaries. If they do not, the disk may be partially corrupted. In this circumstance, if PartitionMagic were to make any modifications it might cause the loss of data. Therefore, PartitionMagic refuses to recognize any of the hard disk’s partitions. To resolve this problem, see the instructions in “Resolving Partition Table Errors” on page 118.

### **#106 Partition doesn’t start with sector one**

See error #105.

### **#107 Partition begins after end of disk**

This error can occur if a partition erroneously extends beyond the physical end of the hard disk. This may happen if the hard disk has been used on a different computer or with a different hard-disk controller or if BIOS settings have been changed. Be advised that the physical geometry of the hard disk may differ from the logical geometry assigned to the hard disk by the operating system.

### **#108 Partition doesn’t end at end of cylinder**

See error #105.

### **#109 Partition ends after end of disk**

See error #107.

### **#110 Partition table number of sectors is inconsistent**

The hard-disk partition table contains two inconsistent descriptions of the number of sectors on the hard disk. This error is serious if both DOS and another operating system use the hard disk. Because DOS uses one description and other operating systems may use the other, data loss is likely once the partition is almost full. To resolve this error, see the instructions in “Resolving Partition Table Errors” on page 118.

### **#111 Logical partition starts outside of Extended**

An extended partition boot record (EPBR) is a sector on the hard disk that contains a partition table. The EPBR partition table is special because it generally only has two valid entries: one for the logical partition and one that is a pointer to the next EPBR. The standard is for the logical partition's entry to be the first entry in the table and the second entry is the pointer to the next EPBR. The third and fourth entries are not used. For some utilities, such as IBM's Boot Manager, the order of these entries is important because the utility expects the first entry to be the logical and the second entry to be the pointer to the next EPBR. If PartitionMagic detects that the EPBR entries are out of order, you will be prompted to fix the error. If you choose to fix the error, PartitionMagic will reorder the EPBR entries for you automatically.

### **#112 Logical partition ends outside Extended**

See error #111.

### **#113 Partitions overlap**

The hard-disk partition table contains erroneous values. If data partitions overlap, writing to one may destroy data in another.

This error is sometimes the result of an OS/2 FDISK bug. If free space exists within the extended partition, OS/2's FDISK program allows a primary partition to be created that overlaps the extended partition. A logical partition is subsequently created in the space occupied by the overlapping primary partition.

If a primary partition overlaps the end of the extended partition but does not overlap any logical partitions within the extended partition, the problem can be remedied by patching the partition table. **Only qualified individuals should attempt this repair! An incorrect patch could destroy all data on the hard disk!** In most instances, you should resolve the problem as explained in “Resolving Partition Table Errors” on page 118.



### **#116 Partition table Begin and Start inconsistent**

The hard-disk partition table contains two inconsistent descriptions of the partition's starting sector. This error can occur if the operating system reports a hard-disk geometry that is different than the geometry in use when the partition table was written. Possible causes include: (1) different operating systems (for example, DOS and OS/2) report different hard-disk geometries, (2) you boot from a diskette that loads a different driver than is loaded when you boot from the hard disk, (3) upgrading the operating system (for example, from OS/2 2.x to OS/2 Warp) causes a different driver to be used, (4) the hard disk or controller has been changed, (5) the BIOS has been upgraded, (6) the BIOS LBA setting has been changed, or (7) there is a partition table virus present on the hard disk.

In most instances, you should resolve the problem as explained in "Resolving Partition Table Errors" on page 118. You can also use a virus scanning program to remove any partition table virus. Data loss is possible if the number of heads or sectors per track has changed since you first created your partitions.

### **#117 Partition's drive letter cannot be identified**

Under OS/2, PartitionMagic must be able to find the drive letter for each partition before modifications can be made. There are various reasons why OS/2 might not be able to find a drive letter for each partition. For example, a driver on your system may change the drive letters from their defaults, or your partitions may not have serial numbers.

You may also see this error when running PartitionMagic under Windows.

The solution is to run PartitionMagic from DOS or from MS-DOS mode (in Windows 95 or Windows 98). When PartitionMagic runs from DOS or from MS-DOS mode, it does not need to be able to find the drive letter for each partition. Thus, if the problem indicated by this error message is the only problem, PartitionMagic can run successfully.

### **#120 The logical drive chain is incompatible**

This error occurs under some operating systems when logical partitions are not chained together in the expected order. DOS, OS/2, Windows 95, Windows 98, and Windows NT require that logical partitions be chained together in ascending order. Some other operating systems do not require this. For example, some versions of the Linux FDISK utility chain logical partitions together in the order they are created. This error message identifies a very dangerous situation; using the DOS FDISK in this situation can cause loss of one or more partitions.

For solutions to this problem, see the instructions in “Resolving Partition Table Errors” on page 118. If you decide to back up your data and recreate your partitions, you may have to use the same partitioning program that you used to create the partitions in order to delete them. PowerQuest recommends recreating the partitions with DOS FDISK or PartitionMagic.

**#121 The first sector of the drive cannot be read**

The first sector of the hard disk (cylinder 0, head 0, sector 1) contains the master boot record (MBR) and the primary partition table. PartitionMagic cannot make changes to this hard disk because an error occurred when it read the first sector. See error #50 for information on resolving this error.

**#122 A bad sector was found in the current or new partition area**

The partition cannot be moved safely because there is a bad sector in the new or current partition area. When you see this error message, the move operation is aborted before any corruption can occur. Try moving the partition to a different place. Run ScanDisk or CHKDSK /F with a surface scan before continuing. If your hard disk has bad sectors, we recommend that you replace the hard disk.

**#140 Overlapping partitions found. No partitions can be undeleted.**

Two or more deleted file systems were found in the unallocated space. However, each file system claims space that another file system also claims. There are no other partitions that can be undeleted.

***Networking Errors (200-299)***

**#202 Socket read failed**

**#203 Socket write failed**

Socket read or write was unable to read or write the requested amount of data. Be sure the network connection is working properly. If this error occurs during an operation, the destination partition and partition table may be corrupted. If this happens, you must delete the affected partition, repair the partition table, and redo the operation.

**#215 The connection was aborted due to timeout or other failure**

The established connection was locally aborted. Be sure that the network connection is working properly. If this error occurs during an operation, the destination partition and partition table may be corrupted. If this happens, you must delete the affected partition, repair the partition table, and redo the operation.

**#217 Attempt to connect timed out without establishing a connection**

The network connection timed out. Be sure that the network connection is working properly. If this error occurs during an operation, the destination partition and partition table may be corrupted. If this happens, you must delete the affected partition, repair the partition table, and redo the operation.

**#218 The attempt to connect was forcibly rejected**

The network connection was refused. No connection could be made because the target machine actively refused it. This error occurs when you attempt to connect to a remote machine from PartitionMagic but there is already another server connected to it. You must wait until the other server has disconnected from the remote machine.

**#220 The Link Support Layer (LSL) driver and supporting NIC driver are not loaded.**

Ensure that the LSL driver and appropriate NIC driver are on the Remote Agent boot disk and are being loaded before you run Remote Agent.

**#221 The connection was reset by peer executing a hard or abortive close**

The connection was forcibly closed by the remote host. This error generally indicates that the peer application on the remote host was suddenly stopped or the host was rebooted. This error may also result if a connection is broken due to keep-alive activity detecting a failure while one or more operations are in progress. Operations that were in progress fail. If this error occurs during an operation, the destination partition and partition table may be corrupted. If this happens, you must delete the affected partition, repair the partition table, and redo the operation.

**#223 No buffers declared for Link Support Layer (LSL) driver in NET.CFG.**

No buffers have been declared for the Link Support Layer (LSL) driver in NET.CFG on the Remote Agent boot disk. Edit the NET.CFG file to ensure that the link support section has buffers declared.

**#224 Buffer size for Link Support Layer (LSL) driver in NET.CFG is too small**

The buffer size for the Link Support Layer (LSL) driver in NET.CFG on the Remote Agent boot disk is too small. Edit the NET.CFG file, and ensure that the link support buffer size is at least 1600.

## **#225 The Link Support Layer (LSL) driver does not support ETHERNET\_II frames**

In NET.CFG on the Remote Agent boot disk, the Link Support Layer (LSL) driver does not contain a setting for ETHERNET\_II frames. Remote Agent requires Ethernet\_II frame support. For proper operation, edit the NET.CFG file on the Remote Agent boot disk, and ensure that the link driver section specifies the Ethernet\_II frame type.

## **Check Errors (500–599)**

Check errors occur when PartitionMagic checks the integrity of a partition. For general information about resolving these errors, see “Resolving Check Errors” on page 117.

### **#500 Subdirectory is corrupted**

This error message reveals the name of the corrupted subdirectory. Back up the contents of that directory and its subdirectories. You can then delete the corrupted subdirectory.

### **#501 Cross-linked files were found**

Multiple files claim the same clusters. PartitionMagic can fix this error when it occurs on an NTFS partition. For more information, see “Checking Partitions for Errors” on page 48. PartitionMagic lets you fix this error by: (1) copying the shared clusters to each affected file, (2) deleting all affected files, or (3) keeping one file and deleting the other affected files.

### **#506 Not enough free space on partition to shrink**

Some free space (which is dependent on the hard disk’s current contents) is required to resize a partition smaller. Delete unneeded and duplicate files in the partition and then attempt the operation again.

### **#508 As specified, the operation does not change the partition**

You have entered a value that is the same as or (when rounded to the required cylinder boundary) rounds to the same as the partition’s present value. Enter a larger change.

### **#509 A bad sector was detected in the current or new FS area**

In order to perform the resize operation that you requested, PartitionMagic attempted to expand the file system area. However, the program found a bad sector in the new area. Try moving the partition before you resize it. No corruption occurs when you encounter this error.

## **#510 The version of the file system is not supported**

An updated version of PartitionMagic is required to operate on this new version of the file system. Visit [www.powerquest.com](http://www.powerquest.com) for information about updated versions of PartitionMagic.

## **Batch Errors (600–633)**

### **#600 Batch file could not be opened**

### **#601 Error trying to write batch file**

### **#602 Batch file not found**

PartitionMagic lets you specify a series of changes you want to make to your partitions, and then executes all the changes when you click **Apply**. At this point, PartitionMagic writes out a command list file (called a “batch file”) to disk in preparation for execution, and then reads the file upon execution (immediately if a lock can be secured on all impacted partitions, or in a special “reboot” mode after rebooting your computer if not all locks can be secured). In the Windows 95, Windows 98, and Windows NT Workstation versions of PartitionMagic, the batch file is located in your Windows\System directory. In the DOS versions, it is located in the directory from which PartitionMagic is running. The batch filename is PQ\_SM40.PQB.

If the batch file cannot be created, cannot be written, or cannot be located when PartitionMagic attempts to execute the command file, the above error messages appear. If you are running PartitionMagic from rescue disks, ensure they are not write-protected. If you cannot determine the source of the problem, contact PowerQuest technical support.

### **#603 Unknown batch operation**

The batch file contained an operation unknown to PartitionMagic. Contact PowerQuest technical support.

### **#625 Batch structure has changed**

Generally error 625 only occurs when the system needs to go into boot-mode to execute your commands. A 625 error occurs when your disk geometry is seen differently in your native Windows version of PartitionMagic than it is in the boot-mode version. For security reasons, PartitionMagic cannot apply your changes without risking data loss.

One common configuration that will cause a 625 error is a system that has a hard disk (such as a SCSI or removable drive) that is visible in Windows but that cannot be seen in the boot-mode environment.

Some possible solutions include:

- Make sure the operation executes in native Windows mode (without resorting to boot-mode execution). PartitionMagic will only go into boot-mode if it cannot lock a partition (that is, if there are any open files on the partition). Try to confine all operations to drives PartitionMagic can lock before clicking the **Apply Changes** button.
- Change the configuration of the offending disk (most likely the SCSI or removable drive) by changing the BIOS setup for that disk. Doing so will ensure that the native and boot-mode environments detect identical hard disk configurations. If this does not work, you can try temporarily disabling the offending disk.

This error usually indicates that some other application has modified your disk configuration while you were running PartitionMagic. Make sure no other applications are loaded while PartitionMagic is running.

### ***User Interaction Errors (950–999)***

#### **#950 Unable to detect any disk drives**

No partitionable hard disks were found on your computer. Diskette drives and many removable media drives do not support partitioning. PartitionMagic cannot perform operations on disks in such drives.

#### **#951 An invalid value was entered**

The value entered is outside the range or (when rounded to the required cylinder boundary) rounds to a value that is outside the range for the operation specified. Check the displayed range and reenter the value.

#### **#952 Value entered is the same as the current value**

See error #508.

#### **#963 Selected operation is currently invalid**

Not all PartitionMagic operations can be performed on all partitions. For example, you cannot convert an HPFS partition to NTFS, and you cannot create a partition if there is not enough unallocated space on the hard disk.

Under Windows, options that are not available either do not appear on the menus or they appear dimmed. However, if you are running scripts with the DOS version, there are no menus so you cannot see which operations are available. Refer to the relevant information in this user guide or the online Help for restrictions that explain why an operation is not available.

**#967 Could not perform operation to the value specified**

This error occurs only when you run PartitionMagic Pro from a script. If the value specified on a resize or move operation is not between the minimum and maximum possible, script execution stops and this error displays.

**#968 Incorrect Volume Label entered, Deletion not performed**

To delete a partition, PartitionMagic requires you to enter that partition's volume label. If the volume label you enter does not match the volume label of the partition you want to delete, this error appears.

**#969 Incorrect Volume Label entered, Unable to proceed.**

To format an existing partition, PartitionMagic requires you to enter that partition's volume label. If the volume label you enter does not match the volume label of the partition you are attempting to format, this error appears.

**#970 Invalid Bad Sector Check value specified**

This error occurs only in the enterprise version of PartitionMagic from a running script. If the script command SET DEFAULT BAD SECTOR TEST STATE is not followed by either ON or OFF, this error appears.

**#971 The label entered was too long**

When you enter a volume label, the process that checks the validity of the label displays this message if the label is too long. The label must be no longer than 11 characters.

**#972 Invalid characters in the label**

When you enter a volume label, the process that checks the validity of the label displays this message if the label has characters that are invalid. Invalid characters include the following: [ \* ? : < > | + = ; \ / " ' , ].

**#973 Volume Label cannot have leading spaces**

When you enter a volume label, the process that checks the validity of the label displays this message if you enter a label in which a space or spaces are the leading characters.

**#974 Root size specified was not in the valid range**

This error occurs only in the enterprise version of PartitionMagic from a running script. If you use the Create, Format, or Resize Root operations, and the number of root entries specified is not within the acceptable range for that partition, this error appears. Generally, the valid range is from 64 to 1,024.

**#975 The cluster size specified was invalid for this partition**

This error message displays only in the enterprise version of PartitionMagic from a running script. Many commands have a cluster size option. If a script command specifies an invalid cluster size (for the type and size of the partition), this error appears.

**#976 Cannot create the file system specified in the current space**

This error message displays only in the enterprise version from a running script. When you use the Create or Format commands, you must also choose a file system type. If the file system or partition type you specified cannot be created in the space available, this error appears.

**#977 Partition selected is invalid**

This error message displays only in the enterprise version of PartitionMagic from a running script. If the partition selected from the Select Partition command is not a valid partition, this error appears.

**#978 Unable to set to proper partition after last operation. Script halted.**

This error message appears only in the enterprise version of PartitionMagic from a running script. After each operation, PartitionMagic ensures that the right partition is still selected. If PartitionMagic is not able to select the proper partition, it ends script processing and displays this error.

**#986 Unable to get information for the specified partition**

PartitionMagic reports this error most commonly when MS-DOS-based terminate-and-stay-resident programs (TSRs) are running in the background. These TSRs will be located in the Config.sys or Autoexec.bat files.

One such TSR is the SUBST command. The SUBST can be used to associate a path with a drive letter. This creates a “virtual drive” that can be accessed as an additional local drive. The SUBST command is classified as a “dirty” or “deadly” TSR, and cannot be loading at the same time that PartitionMagic is loading.

To solve the problem, you must remark out the Config.sys or Autoexec.bat line that is loading the SUBST command. This command can be reinstated after running PartitionMagic.

There are other “dirty” or “deadly” TSRs that may cause a problem. If you are experiencing this error and are not using the SUBST command, find and remark out any of the following commands: Join, Append, or Assign.



This error can also be reported if your C: drive is compressed. If the C: drive is compressed, you will need to either uncompress the drive, or run PartitionMagic from the rescue diskettes.

This error can also be caused by multiple partition table errors. If any of the above solutions do not apply, run PartitionInfo and send the report to PowerQuest technical support. Refer to “Generating Diagnostic Reports with PartitionInfo” on page 119 for information about PartitionInfo and PARTINFO.

## **NTFS Check Errors (1500–1699)**

Errors 1500–1699 are NTFS-specific check errors, which can occur when PartitionMagic checks the integrity of a partition. PartitionMagic can fix certain errors when you perform the Check for Errors operation. For more information, see “Checking Partitions for Errors” on page 48 and “Resolving Check Errors” on page 117.

In this section, “attribute” does not mean read-only, hidden, system, etc. Rather, “attribute” means one of a file’s data streams.

### **#1501 Wrong version of NTFS**

The partition was created using a version of the NTFS file format that PartitionMagic cannot work with.

### **#1503 Bad NTFS cluster size**

The NTFS cluster size must be 512, 1,024, 2,048, 4,096, 8,192, 16,384, 32,768, or 65,536 bytes.

### **#1512 Restart record mismatch**

The two restart entries in the journal file are different. This may happen if Windows NT Workstation is not properly shut down. To fix this problem, restart Windows NT Workstation and shut it down using the Shut Down command.

### **#1516 Partition improperly dismounted**

The partition dirty flag is set in a restart record in the journal file. This error may have been caused by a power failure or system crash while the Windows NT operating system was writing the partition. Reboot Windows NT and execute CHKDSK /F to repair the damage.

### **#1527 Bad update sequence number**

A buffer contains mismatched update sequence numbers. This error may have been caused by a power failure or system crash while the Windows NT operating system was writing to the partition. Reboot Windows NT Workstation and execute CHKDSK /F to repair the damage.

### **#1529 Information mismatch in directory entry**

A file attribute stored in a file record is different from the attribute stored in its directory entry. If this error is in a system file (file 0–10), Windows NT CHKDSK does not fix it, but Windows NT rebuilds the root directory on the partition the next time the operating system is started.

### **#1538 Can't find contiguous space to move**

The partition does not contain enough contiguous free space to hold the new copy of a file that must be contiguous. You normally encounter this error when you use the Resize option to resize a partition smaller.

### **#1539 File size mismatch**

The size of a system file (file 0–15) recorded in its file record does not match either the size recorded in its directory entry in the root directory or the size of its data stream.

### **#1544 External attribute list in external attribute**

An external file record has an external attribute list.

### **#1545 File attributes out of order**

The attributes in a file must appear in order of increasing numeric type.

### **#1546 Attribute neither resident nor nonresident**

The attribute resident flag has a value other than resident or nonresident.

### **#1547 Wrong run limits**

A run has more clusters than the difference between its highest and lowest cluster.

### **#1548 File table has fewer than 16 entries**

The file table must have at least 16 entries.

### **#1549 File table has more than 4 billion entries**

The file table must have fewer than 4 billion entries.

### **#1604 File's parent does not contain the file**

The file's parent directory does not contain a reference to the file, or a file's size, date, or time information does not match the file's parent directory information. This error can be fixed when you perform the Check operation. For more information, see "Checking Partitions for Errors" on page 48. When you fix this error, PartitionMagic updates the file's parent directory information.

### **#1609 Lost cluster(s)**

The volume bitmap shows clusters as being used which are not used (no file claims them). This error can be fixed when you perform the Check operation. For more information, see "Checking Partitions for Errors" on page 48. PartitionMagic lets you fix this error by either deleting the lost clusters or by saving them in a file in the root directory. The filename is FILEXXXX.PQE, where XXXX is a number between 0000 and 9999.

### **#1630 Inconsistent sizes in attribute header**

File size information is incorrect. This error can be fixed when you perform the Check operation. For more information, see "Checking Partitions for Errors" on page 48. When you fix this error, PartitionMagic computes the correct file size information.

### **#1644 Bad system file sequence number**

A system file has a bad sequence number. System files must have a sequence number from 1 to 15. A partition with this problem may pass Windows NT CHKDSK, but Windows NT does not mount the partition the next time the operating system is started.

### **#1647 Error in root directory index**

There is an error in the root directory's index. Running Windows NT CHKDSK does not fix this problem, but Windows NT automatically rebuilds the root directory on the partition the next time it is started.

### **#1681 Data is compressed or sparse**

The NTFS file system cannot be converted to FAT or FAT32 because a file has been compressed. The conversion cannot run unless all files are decompressed. (The FRS number for the compressed file is shown.)

### **#1687 An object index is present**

A file with an object index created by Windows 2000 was found. For example, users may have been assigned disk space quotas. When converting a partition to FAT or FAT32, this information will not be saved, since FAT and FAT32 file systems do not support object indexes. (The FRS number for the compressed file found is shown.)

### ***FAT Check Errors (2000–2099)***

Check errors occur when PartitionMagic checks the integrity of a partition. For general information about resolving these errors, see “Resolving Check Errors” on page 117.

### **#2001 FAT copies are not identical**

Run ScanDisk to fix this error.

This problem may also be caused by a virus. Run a virus checker and remove the virus if possible.

### **#2002 There are invalid entries in the FAT**

This error can generally be fixed by running a thorough ScanDisk on the partitions reporting the error.

### **#2003 File size does not match FAT allocation for file**

Run ScanDisk or CHKDSK to fix this error.

### **#2005 One or more lost clusters are present**

Run ScanDisk or CHKDSK to fix this error.

### **#2012 Formatted FAT file system too big for partition**

This error can occur when:

- The number of sectors in the partition is larger than 65,536, and the bsHugeSects field of the boot sector (“Big total number of sectors” in Norton’s DISKEDIT utility) shows that there are more sectors in the partition than the partition table shows.
- The number of sectors in the partition is less than 65,536, and the bsSects field of the boot sector (“Total sectors on disk” in Norton’s DISKEDIT utility) shows that there are more sectors in the partition than the partition table shows.

This situation can result in data loss when the FAT file system tries to use space outside the partition that does not exist or that belongs to another partition. Since file data may exist outside the partition boundary, you cannot fix the problem by simply patching the boot sector.

To correct the error, back up all data on the partition, delete the partition, recreate the partition, and restore the data. Alternately, it has been reported that you can use Norton Disk Doctor to fix this problem.

### **#2013 A component of FAT geometry is bad**

This error can occur when:

- The number of clusters on the hard disk is greater than the FAT limits allow. This can result from bad values in the boot sector for the number of sectors, FATs, root entries, reserved sectors, and sectors per cluster.
- The number of sectors in the FAT is not large enough to hold the number of clusters present on the hard disk.

A qualified consultant may be able to fix the hard disk by performing simple patches. Alternately, you can back up the data on the partition, delete the partition, recreate the partition, and restore the files.

### **#2024 The OS/2 Extended Attribute file is corrupt**

This error only occurs if you are running OS/2 and a program mistakenly writes to or overwrites the OS/2 Extended Attribute file. If this error occurs, you should back up your data, delete the partition, recreate the partition, and restore your data.

### **#2027 Too many root entries in the FAT32 partition to convert it to FAT16**

Long filenames may be causing this problem, since they use multiple entries per file. To fix this error, move some of the root directory entries into a subdirectory and defragment the disk.

### **#4002 No valid NetWare volumes signature in volume definition table**

See error #3.

### ***BootMagic Errors (8000-8999)***

These errors are “first head” errors. They can be resolved with assistance from PowerQuest technical support. Before calling technical support, please type the following at a DOS prompt: `wrprog /bak >x:head1.dat`, where `x:` is one of the drives on your machine.

The wrprog.exe file can be found in the Utility\DOS folder under your PowerQuest product folder. If you are running under Windows NT and do not have DOS available, you can use the DOS rescue diskettes you created for your PowerQuest software.

### ***Operating System Errors (over 10,000)***

Any number over 10,000 indicates an operating system error. To determine the number of the operating system error, subtract 10,000. (For example,  $10,032 - 10,000 = 32$ ) Consult your operating system documentation for information about resolving the error.



## **PowerQuest Technical Support**

*This appendix includes the following information:*

- Before Contacting Technical Support
- Term of Technical Support
- Contact Information

## Before Contacting Technical Support

Before contacting PowerQuest, please try to resolve problems you encounter by using the online Help, the user guide, the READMEPM file, and PowerQuest's corporate web site.

### **Tips**

- Your problem may be resolved by applying the most recent patch or upgrade of the software. Go to [www.powerquest.com/updates](http://www.powerquest.com/updates) to download the latest software.
- PowerQuest technical support engineers may request information from the PartitionInfo utility program to help you resolve problems with PartitionMagic. See “Generating Diagnostic Reports with PartitionInfo” on page 119 for more information about PartitionInfo and PARTINFO. The PartitionInfo report is always required for errors 100-199, 986, and drive detection errors of any kind.
- Your product serial number is required to obtain technical support.
- If you received a demo or trial version of the product, you are not entitled to complimentary technical support.

## Term of Technical Support

Technical support is available to all registered users throughout the life of the product, which began when PowerQuest released the software to manufacturing and ends six months after the release of the next version of the software or when PowerQuest discontinues its development.

Upon registration, PowerQuest provides 90 days (retail purchases) or 45 days (enterprise purchases—PartitionMagic Pro) of complimentary technical support from the day of your first call.

## Contact Information

### **Corporate Web Site**

The Technical support web site, [support.powerquest.com](http://support.powerquest.com), includes an overview of support options, an e-mail support request form, a list of error messages and information to resolve problems you encounter, and answers to frequently asked questions about the product.



## **E-mail**

<b>Language</b>	<b>E-mail (for specific technical problems)</b>
Dutch	eurots@powerquest.com
English	help@powerquest.com eurots@powerquest.com
French	france@powerquest.com
German	germany@powerquest.com
Italian	italian@powerquest.com
Portuguese	latina@powerquest.com
Spanish	spanish@powerquest.com

To obtain e-mail technical support for specific technical questions, you can fill out the form at [www.powerquest.com/support/emssupport.html](http://www.powerquest.com/support/emssupport.html) (available in English only).

## **E-mail on Demand**

PowerQuest maintains an e-mail on demand system to resolve common problems. You can view a list of available documents at [support.powerquest.com](http://support.powerquest.com). To request one of the documents, send an e-mail message to **support@powerquest.com** with the index number of the document in the subject of the message. You can only request one document per e-mail message. E-mail on demand documents are available only in English.

## **Fax**

<b>Location</b>	<b>Number</b>
U.S.A.	(801) 437-4218
Europe	+31 (0)20 581 9270

Fax a description of your problem to the technical support fax number. This service is available in the U.S., Canada, and Europe 24 hours a day, 7 days a week. PowerQuest technicians try to respond to all fax requests within 24 hours.

## **Telephone**

<b>Language</b>	<b>Location</b>	<b>Number</b>
Dutch	Netherlands	+31 (0)20 581 3906
English	Netherlands	+31 (0)20 581 3907
English	UK	+44 (0)17 1341 5517
English	U.S.A.	(801) 226-6834
French	France	+33 (0)1 69 32 49 30
German	Germany	+49 (0)69 66 568 516
Italian	Italy	+39 (0)2 45 28 1312
Portuguese	U.S.A.	(801) 226-6834
Spanish	Spain	+34 (0)91 662 31 46
Spanish	U.S.A.	(801) 226-6834

The U.S.A. call center is open Monday through Friday from 7:00 a.m. to 6:00 p.m., MST/MDT. Our European call center, located in the Netherlands, is open Monday through Friday from 9:00 to 18:00, CET.

## **Postal Service Mail**

<b>U.S.A.</b>	<b>Europe</b>
PowerQuest Corporation P.O. Box 1911 Orem, Utah 84059-1911 U.S.A.	PowerQuest Customer Service P.O. Box 58287 1040 HG Amsterdam, Netherlands

Include a detailed description of your problem and a return address, a daytime phone number, or other relevant contact information.

# Index

## Numerics

- 64K clusters 23
  - use of 67
- 7.8 GB limit for NTFS system partition 30

## A

- across the wire 86
- advanced operations
  - changing drive letters 62
  - hide/unhide partition 63
  - resize root 64
  - resizing clusters 66
  - retesting bad sectors 62
  - set active 65
- applying changes 20
  - from wizards 82
- asterisk (\*) in partition list, explained 15
- automating tasks with wizards 82

## B

- backing up partitions 47
- bad sectors 24
  - retesting 62
- batch error messages 131
- batch file, running from rescue disks 10
- batch files
  - See scripting
- boot code boundary 15, 37
- Boot Disk Builder 87
- boot disks for Remote Agent
  - creating under Windows 87
  - files included on 91
- boot disks, creating BootMagic 100
- bootable partitions
  - creating 36
  - FAT, troubleshooting 119
  - Linux, troubleshooting 37, 44
  - NT, troubleshooting 30
- BootMagic 97
  - adding operating systems to menu 102
  - configuring 101
  - creating a rescue disk 100
  - deleting items from menu 104
  - disabling 105

- installing 99
- modifying menu item properties 104
- online help 100
- setting passwords 102
- startup delay, setting 105
- troubleshooting 103

## C

- cancelling changes 20
- CD-ROM, assigning a drive letter to 115
- changes, applying 20
- changing a password 12
- changing drive letters 62
- check
  - error messages 130
  - resolving errors 117
- checking disk integrity 28
- checking partitions 48
- cluster size 55, 57, 68
- cluster waste 55
- clusters
  - 64K 23
  - 64K, use of 67
  - FAT, required size 68
  - resizing 66
  - size 66
- clusters, bad 62
- combining partitions 50
- command line switches, PartitionMagic
  - See PMSRIPT.PDF on the PartitionMagic CD
- command line switches, PQBoot 96
- completing tasks, general process for 17
- compression utilities and PartitionMagic 109
- configuring BootMagic 101
- context-sensitive help 26
- conventional memory, freeing 114
- converting 73
  - FAT to FAT32 73
  - FAT to HPFS 73
  - FAT to NTFS 75
  - FAT32 to FAT 75
  - NTFS partitions to FAT or FAT32 76
  - NTFS to FAT or FAT32, limitations 77
  - primary partitions to logical 79

- copying
  - partitions 47
  - partitions (wizard) 84
  - partitions to or from a remote server 85
- create new partition wizard 82
- creating boot disks for the Remote Agent 87
- creating partitions 33
  - bootable 36
  - drive letter changes resulting from 36
  - file systems 83
  - scenarios 40
  - with wizard 82
- creating rescue disks 7
- customer support 142

**D**

- data
  - moving 58
  - protection 3
- data loss, causes of 24, 50, 63, 118, 126, 127, 139
- data partition 100
- default operating system 104
  - setting startup delay 105
- deleting BootMagic menu items 104
- deleting partitions 43
- destroying partitions 43
- details, viewing 19
- diagnostic reports 121
- DirBlock 57
- disabling BootMagic 105
- discarding changes 20
  - from wizards 82
- disk access error messages 123
- disk compression utilities, DriveSpace 109
- Disk Doctor, Norton 108
- disk space, determining wasted 55, 68
- disk usage 55
- disk, selecting 18
- disks, dynamic (Windows 2000) 18
- DOS
  - keyboard doesn't work the same under 25
  - running PartitionMagic from 9
- drive letters
  - changes to 36
  - changing under Windows NT 62
  - in partition list 15
  - problems, caused by changes to 94

- remapping with DriveMapper 94
- drive overlay programs, compatibility with
  - PartitionMagic 111
- DriveMapper 36, 94
  - running after merging partitions 84
- DriveSpace, compatibility with PartitionMagic 109
- Dual Boot, compatibility with PartitionMagic 110
- duplicating partitions 47
- dynamic disks 18

## E

- e-mail on demand technical support 143
- emergency disks
  - See* rescue disks
- error messages 121
  - batch 131
  - check 130
  - disk access 123
  - FAT 138
  - free space, regarding 130, 136
  - miscellaneous 122, 124
  - networking 128
  - NTFS-specific 135
  - OS/2-specific 126, 127, 139
  - partition table 125
  - user interaction 132
- errors, resolving
  - check 117
  - master boot record 118
  - partition table 118, 119
- examples
  - creating partitions 40
  - resizing and moving partitions 32
- extended attributes
  - errors involving 50, 139
  - information about 56, 58
- extended characters do not display properly 25
- extended partitions 21
- extended x file system 21

## F

- FAT file system 21
  - allow 64K clusters for Windows NT 23
  - check error messages 138
  - cluster size, 64K 67
  - cluster size, changing 66
  - cluster size, explained 66
  - cluster waste 55

- converting from FAT32 75
  - converting to FAT32 73
  - converting to HPFS 73
  - converting to NTFS 75
  - OS/2 extended attribute errors on partitions 50
  - partitions, information about 55
  - partitions, resizing 31
- FAT information 56
- FAT16x 21
- FAT32 file system 22
  - determining if current operating system supports 23
  - partitions, converting to FAT 75
  - partitions, information about 55
- FAT32x file system 22
- FDISK, error messages involving 126, 127
- features, new 4
- file record size 57
- file systems supported by PartitionMagic 21
- file systems, information displayed by wizard 83
- first data sector 56
- first FAT sector 56
- first MFT cluster 57
- first physical sector 56
- Fnodes 58
- formatting partitions 46
- free DirBlocks 58
- free space
  - displayed 55
  - error messages involving 130, 136
  - redistributing, with wizard 83
  - required to install BootMagic 98
  - required to move a partition 29
  - required to resize a partition 31

## H

- hard disk
  - formatting 46
  - geometry 3, 125, 127
  - SCSI, using PartitionMagic on 117
- hard disk, read-only 24
- hardware requirements *See* system requirements
- help
  - context-sensitive 26
  - online 25
  - README file 26
- hibernating Windows 2000 Professional or Windows Me 9

- hiding partitions 63
- hiding wizard buttons 84
- HPFS
  - converting to, from FAT 73
  - file system 22
  - Fnodes 58
  - partitions, information about 55, 57
  - partitions, minimum size of 32
- HPFS/386 file system 22

## I

- icons, hiding wizard 84
- index, error in root directory 137
- Info 54
  - cluster waste 55
  - disk usage 55
  - FAT information 56
  - HPFS information 57
  - NTFS information 57
  - partition info 55
- installing
  - BootMagic 99
  - operating systems 38
  - operating systems, multiple 65
  - PartitionMagic, Windows 6
  - Windows NT, troubleshooting 40
- integrity checks, disk 28
- integrity checks, partition 48
- interface, overview of 14
- international keyboards 25
- Internet technical support 142

## K

- KEYB.COM 25
- keyboards, international 25

## L

- label 45
- last physical sector 56
- letters, drive *See* drive letters
- LILLO 42
- Linux
  - creating a bootable partition, requirements 37
  - creating logical partition for, scenario 41
  - file system 22
  - installing on a new partition 38
  - unbootable after creating partition 37, 44
- list, partition *See* partition list

long filenames *64*  
Windows, created by *73*

## **M**

main window  
overview *14*  
rescue disk *16*  
status bar *16*

master boot record *125, 128*

master boot record viruses, removing *118*

master file table *57*

memory, freeing to run PartitionMagic *114*

merging partitions *50*  
wizard *84*

moving  
data *58*  
partitions *28*  
partitions, bootable *30*  
partitions, scenarios *32*

moving partitions to or from a remote server *85*

MS ScanDisk *58*

## **N**

naming a partition *45*

networking errors *128*

new features *4*

Norton utilities *108*  
AntiVirus *109*  
Disk Doctor *108*  
SystemWorks *109*

NT CheckDisk *58*

NTFS  
check error messages *135*  
file system *23*  
partitions, checking *10*  
partitions, information about *57*

NTFS partitions  
converting to FAT or FAT32 *76*  
information about *55*  
minimum size of *32*

## **O**

online help *25*  
BootMagic *100*

operating system boot utilities  
BootMagic *97*  
Dual Boot *110*  
System Commander *110*

operating systems  
adding to BootMagic menu *102*  
creating new partitions for *36, 82*  
installing *38*  
installing multiple *65*  
setting a default with BootMagic *104*  
supported by BootMagic *99*

operations  
check *48*  
copy *47*  
create *33*  
delete *43*  
info *54*  
label *45*  
move *28*  
MS ScanDisk *58*  
NT CheckDisk *58*  
resize *28*  
selecting *19*  
undoing *19*  
viewing pending *19*

operations process overview *17*

OS/2

Dual Boot *110*  
error messages involving *126, 127, 139*  
FDISK, errors involving *125, 126*  
running PartitionMagic from *9*  
SYSINSTX.COM *74*  
UHPFS.DLL *74*

overlapping partitions, fixing *126*

## **P**

PARTINFO *121*

partition info *55*  
*See also* PartitionInfo program

partition list  
asterisk (\*) in, explained *15*  
drive letters in *15*  
status in *15*

partition list in main window *15*

partition map *15*

partition table  
error messages *125*  
removing viruses *118*  
resolving errors *118, 119*

partition type *55*

PartitionInfo program *119*

- PartitionMagic
    - benefits of registering 142
    - compatibility with other programs 108
    - PartitionInfo program 119
    - preferences, setting 23
    - system requirements 6
    - uninstalling 12
  - partitions
    - active 15
    - active, setting 65, 95
    - applying changes to 20
    - backing up 47
    - bootable 36, 65, 95
    - checking integrity 48
    - checking NTFS 10
    - copying 47
    - creating 33
    - creating with wizard 82
    - creating, scenarios 40
    - data 100
    - deleting 43, 133
    - file systems supported 21
    - formatting 46, 133
    - hidden 15
    - hiding/unhiding 63
    - information 54
    - map in main window 15
    - merging 50
    - moving 28
    - moving, scenarios 32
    - multiple visible primary 63, 110
    - naming 45
    - overlapping, fixing 126
    - PqRP 117
    - primary, hiding/unhiding 64
    - resizing 28
    - resizing limitations 31
    - resizing, scenarios 32
    - scanning for errors 58
    - selecting 18
    - serial number 55
    - shredding 43
    - splitting 52
    - status 15
    - undeleting 44
    - using 64K FAT clusters on 23
  - password protection 11
    - removing 12
  - passwords
    - changing 12
    - setting for BootMagic 102
  - pending changes 20
  - pending operations, viewing 19
  - physical disk, selecting 18
  - physical geometry 56
  - PowerQuest web site 142
  - PQ\_DEBUG.TXT file 119
  - PQBoot 95
    - command line switches 96
    - using with multiple visible primary partitions (Windows NT) 96
  - PQFLEX partitions 117
  - PqRP partitions 117
  - preferences 23
    - ignore OS/2 EA errors on FAT 24
    - set as read-only for PartitionMagic 24
    - skip nad sector checks 24
    - system supports FAT32 23
    - wizard buttons, hiding 84
  - preferences, PartitionMagic
    - allow 64K FAT clusters for Windows NT 23
  - preparing for a new operating system
    - See creating new partitions
  - primary partitions
    - converting to logical 79
    - hiding/unhiding 64
  - process overview 17
- R**
- README file 26
  - read-only, set hard disk as 24
  - reclaiming wasted space 66
  - redistribute free space wizard 83
  - reducing the number of partitions 50
  - registering PartitionMagic 142
  - remapping drive letters 94
  - Remote Agent 85
    - boot disks, creating under Windows 87
    - boot disks, using 91
    - errors 128
    - overview 86
    - running without a boot disk 91
  - remote servers
    - See also Remote Agent
  - removable media, assigning a drive letter to 115

- removable media, using PartitionMagic with 18
- requirements, system 6
- rescue disks
  - BootMagic 100
  - contents of 8
  - creating 7
  - international keyboards and 25
  - ran out of space on 9
  - running from, if hard disk is compressed 135
  - running PARTINFO from 121
  - running PartitionMagic from 9
  - running scripts from 10
  - running under Windows 2000 Professional or Windows Me 9
  - system requirements for running PartitionMagic from 6
- resizing clusters manually 66
- resizing operations 28
- resizing partitions
  - limitations 31
  - partition won't reboot after resizing 119
  - scenarios 32
- resizing the root directory 64
- restoring deleted partitions 44
- retesting bad sectors 62
- root directory
  - FAT, capacity in 56
  - index, error in 137
  - long filenames in 64
  - resizing 64
- running wizards 82

**S**

- ScanDisk 58
- scanning for errors 58
- scenarios
  - creating Linux partition 41
  - creating partitions 40
  - resizing and moving partitions 32
- scripting 84
  - running from rescue disks 10
  - See also* online help
- SCSI hard disk, using PartitionMagic on 117
- sectors, bad 124, 133
- sectors, retesting bad 62
- selecting
  - operations 19
  - partitions 18

- physical disks 18
- set active 65
- set hard disks as read-only for PartitionMagic 24
- shredding partitions 43
- skipping bad sector checks 24
- software requirements 6
- sound card drivers 111
- SoundBlaster Live DOS drivers 111
- splitting partitions 52
- startup delay, setting for BootMagic 105
- startup switches, PartitionMagic
  - See* PMScript.PDF on the PartitionMagic CD
- startup switches, PQBoot 96
- startup, BootMagic menu and 106
- status bar 16
- support, technical 142
- switching between bootable partitions 95
- SYSINSTX.COM 74
- System Commander 110
- system requirements
  - hardware requirements 6
  - software requirements 6
- system supports FAT32 23
- SystemWorks 109

**T**

- technical support 142
  - duration 142
  - e-mail on demand 143
  - fax 143
  - mail 144
  - postal service mail 144
  - registering for 142
  - telephone 144
  - web site 142
- total physical sectors 56
- troubleshooting 113
  - changes entered seem to have disappeared 82
  - computer freezes when you boot 103
  - computer won't boot 7
  - disk write error on machine with SystemWorks installed 109
  - DOS version of PartitionMagic 10
  - hid partition where PartitionMagic is installed 9
  - I undeleted a partition but it's not the same as it used to be 45
  - Linux 37, 44



- NTFS features lost when converting to FAT or FAT32 77
- partition unbootable after resizing 119
- PartitionMagic crashes in boot-mode 111
- rescue disks, ran out of space on disk 1 9
- tips 142
- Windows NT won't install 40
- workstation is unbootable 30

## U

- UHPFS.DLL 74
- unallocated space 23
- unallocated space, redistributing 83
- undeleting partitions 44
  - restrictions 45
- undo 19
- unformatted partitions 23
- unhiding partitions 63
- uninstalling PartitionMagic 12
- unused space 55
- unused space, redistributing 83
- utilities 8
- utilities, operating system
  - AUTOCHK 117
  - CHKDSK 48, 57, 117
  - FDISK 126, 127
  - NT CheckDisk 58
  - ScanDisk 58, 117

## V

- View menu 14
- virus protection software 110
- viruses, removing 118
- volumes, naming 45

## W

- warnings 77
- wasted space, reclaiming 66
- Windows
  - check errors, resolving 117
  - drive letters, changing 94
  - DriveSpace, using with 109
  - installing PartitionMagic from 6
  - long filenames 73
  - running PartitionMagic from 8
- Windows 2000
  - dynamic disks 18
  - running rescue disks on 9

- Windows 95, deleting operating system compression files 115

- Windows Me, hibernating 9

- Windows NT

- 64K FAT clusters 23
- changing drive letters 62
- CheckDisk 58
- creating primary partition for (scenario) 39
- error messages, involving 135
- installing on a new partition 38
- using PQBoot with 96
- won't install 40

- wizards

- applying or discarding changes 82
- copying partitions 84
- create new partition 82
- hiding buttons on main screen 84
- merging partitions 84
- overview 14, 82
- redistributing free space 83
- running 82

## Z

- Zip disks, using PartitionMagic with 18