

Web Page Builder FTP v1.0

Help Contents

© Copyright KTG Software 1997, All rights Reserved.

[Introduction](#)

[Login Dialog Box](#)

[Example Login](#)

[Main Window](#)

Web Page Builder FTP is part of the Web Page Builder v2.01 Professional distribution available from KTG Software
at Web: **<http://light.iinet.net.au/~tksk>**
 e-mail: **tksk@light.iinet.net.au**

Introduction

FTP Stands for File Transfer Protocol. An FTP client program is used to transfer files across the Internet, from a local computer to a remote computer. Web Page Builder FTP is an FTP client program that comes with the Web Page Builder v2.01 Professional distribution.

Once you have created some HTML files with the Web Page Builder editor you must upload them to your server in order for the pages to be accessed on the World Wide Web (WWW). With Web Page Builder FTP you can transfer all the files necessary to implement your Web site.

Login Dialog Box

- **Host Address** This is the Internet address of the FTP site that you want to connect to. For example if your Internet Service Provider (ISP) has a WWW address such as **www.isp.com.au** then the FTP address would most likely be **ftp.isp.com.au** or in some cases simply **isp.com.au**
- **Username** This is the name that identifies you to the remote system. For example, if your e-mail address is: **user@isp.com.au** then your **Username** would be: **user**. For anonymous FTP access you may simply use the word **anonymous** as your username.
- **Password** This is the code that enables various levels of access to a remote system. For example if you wish to connect to your directory on your ISP's computer you would use the same password as the one you use to log on to your ISP to enable the WWW. For anonymous access to an FTP site you can simply use your e-mail address as the password.
- **Anonymous Login** Checking this function will automatically set your username to anonymous and your password to an e-mail address.

[See Example](#)

Example Login

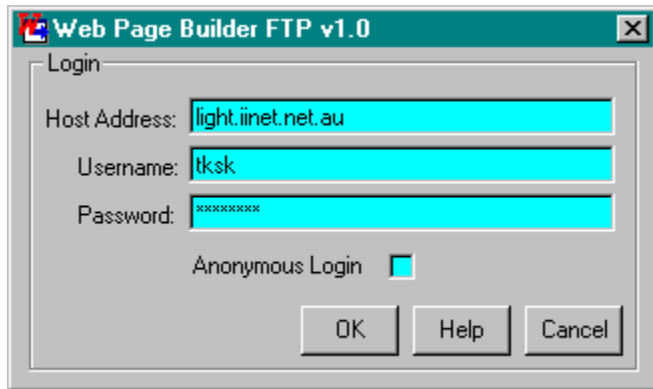
For example my e-mail address is:

tksk@light.iinet.net.au

and my Service Provider's Web address is:

http://light.iinet.net.au

Therefore to access my directory on my server I use:



Once connected, my HTML files go in to a directory called public_html on my servers machine. Then they can be access from anywhere on the Web.

Ask your service provider's network administrator for the directory to place files in for your particular server, or look for online documentation on your service provider's Web Pages.

Main Window

- **Your Computer** The two list boxes under this heading show the directories and files on your computer.
- **Remote Computer** The two list boxes under this heading show the directories and files on the remote computer.
- **Change Dir** Change the current directory.
- **Remove Dir** Remove (delete) a directory.
- **Make Dir** Make a new directory.
- **Delete File** Delete the selected file or files.
- **Rename File** Rename the currently selected file.
- **Upload** Send the selected file or files to the remote system.
- **Download** Get the selected file or files from the remote system.
- **Binary** Set the file transfer mode to binary. This mode should be used for files such as executables, archives (.zip, .arj) or picture files (.gif,.jpg).
- **ASCII** Set the file transfer mode to text. This mode should be used for files that contain text, such as files with a .html, .htm or .txt extension.

