

## USERS MANUAL

### ***PRODUCT OVERVIEW***

Active@ Disk Image is a DOS-based solution designed for complete backup and restoration of the whole HDD as well as the particular FAT / NTFS partitions and logical drives.

You can create compressed and non-compressed *raw images* (containing **all** drive's data - a mirror of drive's surface stored in one or set of files) as well as compressed *data images* (containing the only **used** drive's clusters, this can save you a space and increase speed).

Unique feature of Active@ Disk Image is the ability to open disk images and preview files and folders inside before image restoration. You can even copy any specific files or folders from the image to another location.

Using Active@ Disk Image you can perform backup of you PC system to another hard drive or to the network server storage and restore it from there back in the event of a system crash or loss of important information. In case of dealing with disk containing accidentally deleted files you can use Active@ Disk Image to make an image of the disk (snapshot), from which you can later try to restore deleted file using data recovery utilities like Active@ UNDELETE or Active@ UNERASER without the risk of overwriting important data on original disk. In case when your disk has started getting bad clusters (basically falling apart) you can effectively stop this process to preserve whatever readable as an image and try to restore data later.

### ***SYSTEM REQUIREMENTS***

Active@ Disk Image for DOS requires:

- AT compatible CPU with 386 or greater processor
- 16 MB of RAM
- 1.44 Mb floppy disk drive or CD-ROM drive
- EGA 640x480 or better screen resolution
- Bootable Floppy or CD-ROM containing DOS, or startup disk for Windows 95/98
- Source HDD of type IDE/SATA/SCSI attached
- Destination FAT/FAT32 volume that may be local or mapped network drive for storing images

## DIFFERENCES BETWEEN FREE AND COMMERCIAL VERSIONS

Active@ Disk Image version	Free	Pro
Can be placed to and run from DOS bootable floppy or CD-ROM	Yes	Yes
Displays complete HDD, partition and disk image information	Yes	Yes
Creates Compressed and Non-Compressed <i>Raw Image</i> for the <b>physical drive</b> (HDD)	Yes	Yes
Restores Non-Compressed <i>Raw Image</i> back to the <b>physical drive</b>	Yes	Yes
Restores Compressed <i>Raw Image</i> back to the <b>physical drive</b>	No	Yes
Creates Compressed and Non-Compressed <i>Raw Image</i> for the <b>partition</b> (logical drive)	Yes	Yes
Restores Non-Compressed <i>Raw Image</i> back to <b>partition or drive</b>	Yes	Yes
Restores Compressed <i>Raw Image</i> back to <b>partition or drive</b>	No	Yes
Creates Compressed <i>Data Image</i> for any <b>partition</b> on HDD	Yes	Yes
Restores Compressed <i>Data Image</i> back to <b>partition</b> or drive	No	Yes
Disk Viewer displays contents of any physical sector on the drive or within Disk Image	Yes	Yes
Preview mode allows to view all files and folders inside disk image before restoration	Yes	Yes
Allows to copy specific files and folders from the image to another location	Yes	Yes
Supports IDE / ATA / SCSI / USB drives	Yes	Yes
Supports large (more than 128GB) size Hard Disk Drives and partitions	Yes	Yes
Supports FAT12, FAT16, FAT32, NTFS, NTFS5 file systems	Yes	Yes
Supports partitions created in MS-DOS, Windows 95/98/ME/NT/2000/XP/2003	Yes	Yes

## OPERATING PROCEDURES

In order to run Disk Image you must boot in MS-DOS mode. For this you must have a bootable floppy disk containing MS-DOS system files. Another option is to create a bootable CD (if your system has a CD burner and can boot from CD)

### Bootable floppy disk (startup disk) preparation

If you do not have bootable floppy, you can prepare such disk from MS-DOS, Windows 95/98 the following ways:

- If you boot in MS-DOS or in Command Prompt mode of Windows 95/98, insert blank floppy and type:

```
C:\> FORMAT A: /S
```

... and follow the instructions on a screen

- If you boot in Windows 95/98/ME, go to the "Control Panel" then "Add/Remove Programs", then switch to tab "Startup Disk" and click button "Startup Disk..." and follow the instructions

- If you boot in Windows XP, insert blank floppy, right-click A: drive, choose "Format...", check "Create an MS-DOS startup disk" option and click "Start" button

Copy Active@ Disk Image (DISK\_IMG.EXE) and DOS-extender (DOS4GW.EXE) to the bootable floppy disk.

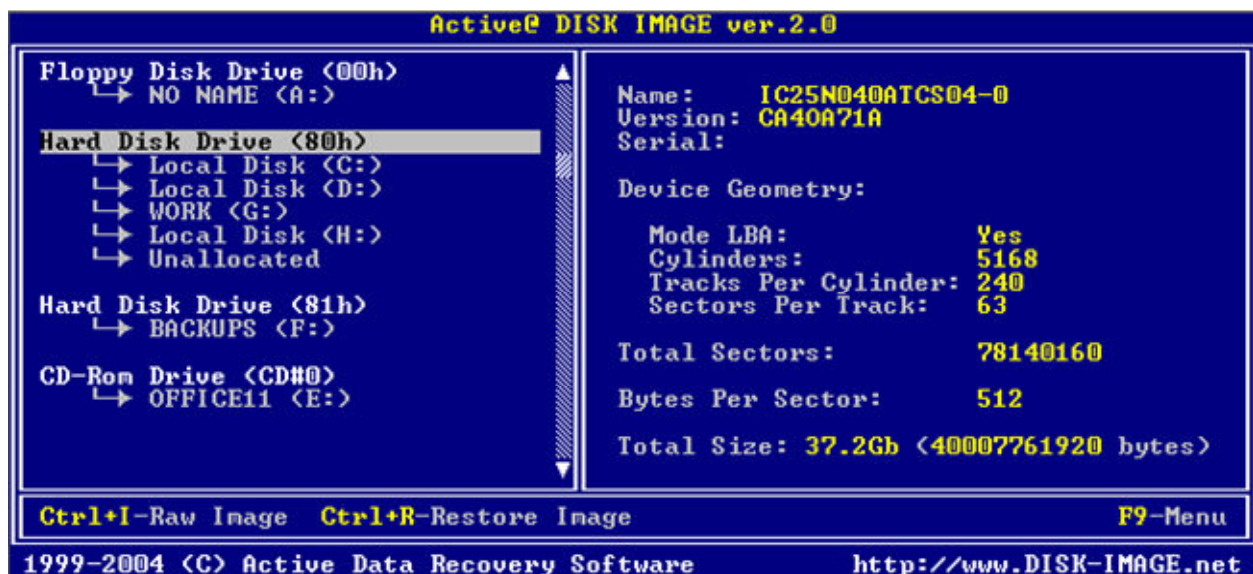
## Program start and information display

- Boot from the floppy or CD-ROM in DOS mode, or Command Prompt mode in Windows 95/98

- Run Active@ Disk Image by typing:

```
A:\> DISK_IMG.EXE
```

- You will see a list of devices and drives on the left side and information panel on the right:



Use **[Up]**, **[Down]** arrows to select a drive or disk you want to see information for.

## Disk Image creation

A "Disk Image" is a copy of the drive saved in file or set of files. Disk Image is used for backup/restore purposes as well as for the analysis and recovering of deleted files. Disk Image for the whole Hard Disk Drive or for a particular partition (or logical drive) can be created using Active@ Disk Image software.

### Starting Disk Image creation process

- Start Active@ Disk Image

- Select the device, for example "Hard Disk Drive (80h)", if you want to create image for the whole hard disk (HDD)

*or*

- Select the logical drive, for example "Local Disk (C:)", if you want to create image for the particular partition (volume)

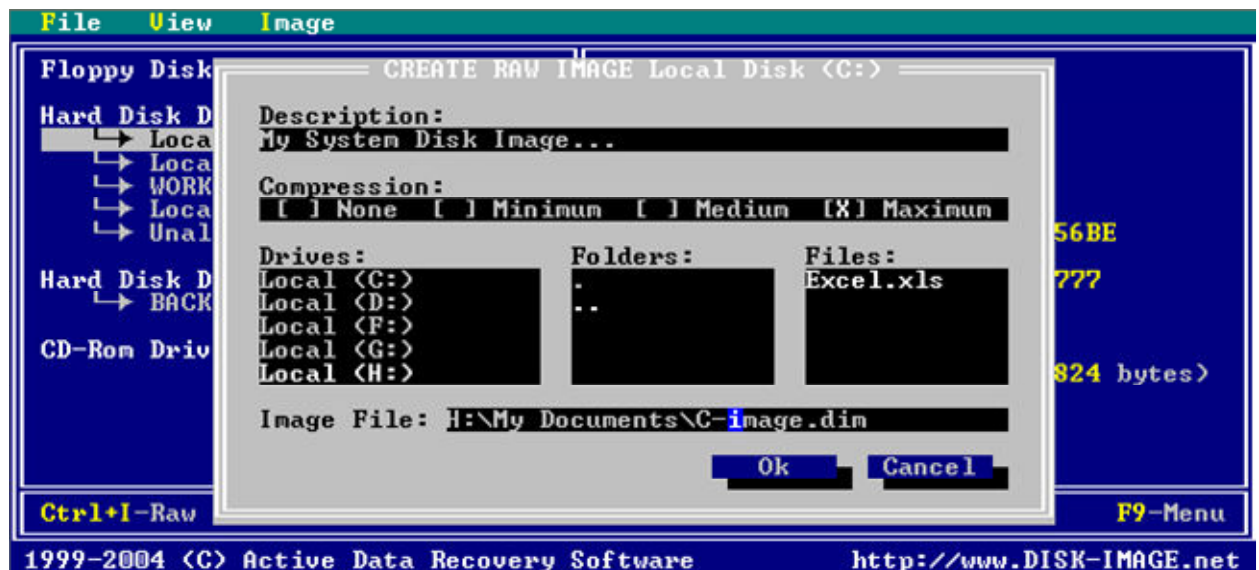
- Verify source disk parameters (name, serial, file system, size, etc) on the right side. If you want, you can press **[ENTER]** to scan a partition and preview files located there (for logical drives only).

- Press **[Ctrl]+[I]** to create *Raw Image*. *Raw image* is an image containing **all** drive's data - a mirror of drive's surface stored in one file or set of files. It includes used as well as unused clusters and sectors. This means that all existing and even some deleted files will be copied to the image. *Raw image* has usually size larger than *Data Image*, but gives full picture of data, no one bit of data is missed in this case.

or

- Press **[Ctrl]+[D]** to create *Data Image* (for logical drives and partitions only). *Data Image* - image containing only **used** drive's clusters. When you recover *Data Image* later on - all unused clusters would be just zeroed. This approach however can save you space and increase speed of disk image creation.

- Create Image dialog appears:



- You can see image type: [*Raw*] and source: [*Local Disk (C:)*] at the dialog title.
- You can type your description for an image to be created. In the example above the description typed is "My System Disk Image..."
- You can move between the dialog controls via **[TAB]** and **[SHIFT]+[TAB]** keys
- You can choose a compression type using arrows keys:
  - o *None* - Fast method but takes lots of space - namely size of drive to be imaged. However this format is compatible with most of other tools.
  - o *Minimum* - Relatively fast. Speed of image creation takes precedence over size of output image
  - o *Medium* - Speed and size of image creation have equal priorities
  - o *Maximum* - Size of resulting image takes precedence over speed of image creation
- In the example above *Maximum* compression method is chosen.
- You can specify a location of resulting image using **[TAB]** key to move through the *Drives:* and *Folders:* controls and arrows to select a particular Drive and Folder. Press **[ENTER]** to enter the folder or subfolder if you want to. You will see all local and attached network drives as a destination for the image. In the example above location "H:\My Documents" is chosen.
- Type resulting file name into *Image File:* box. In the example above "C-image.dim" is chosen.
- Move cursor to [ **OK** ] button and press **[ENTER]** or **[Space]** to start disk image creation process.

- You can see a progress of image creation and stop the process anytime by pressing **[ESC]**:

```

07/12/2004 12:16:57 DRIVE BACKUP CREATION FOR Local Disk (H:) STARTED
07/12/2004 12:16:58 Creating backup of Local Disk (H:) on G:\backup.000 ...
07/12/2004 12:17:03 CONFIRM [0] : Terminate process? >> Y
07/12/2004 12:17:03 DRIVE BACKUP CREATION STOPPED
07/12/2004 12:21:36 ERROR [15]: Unable to lock G: volume. >> I
07/12/2004 12:21:36 DRIVE IMAGE CREATION FOR WORK (G:) STARTED
07/12/2004 12:21:36 Creating image of WORK (G:) on H:\My Documents\C-image.00

Copied 120Mb of 199Mb ...
51 seconds remaining                               Press ESC to stop process

1999-2004 (C) Active Data Recovery Software         http://www.DISK-IMAGE.net

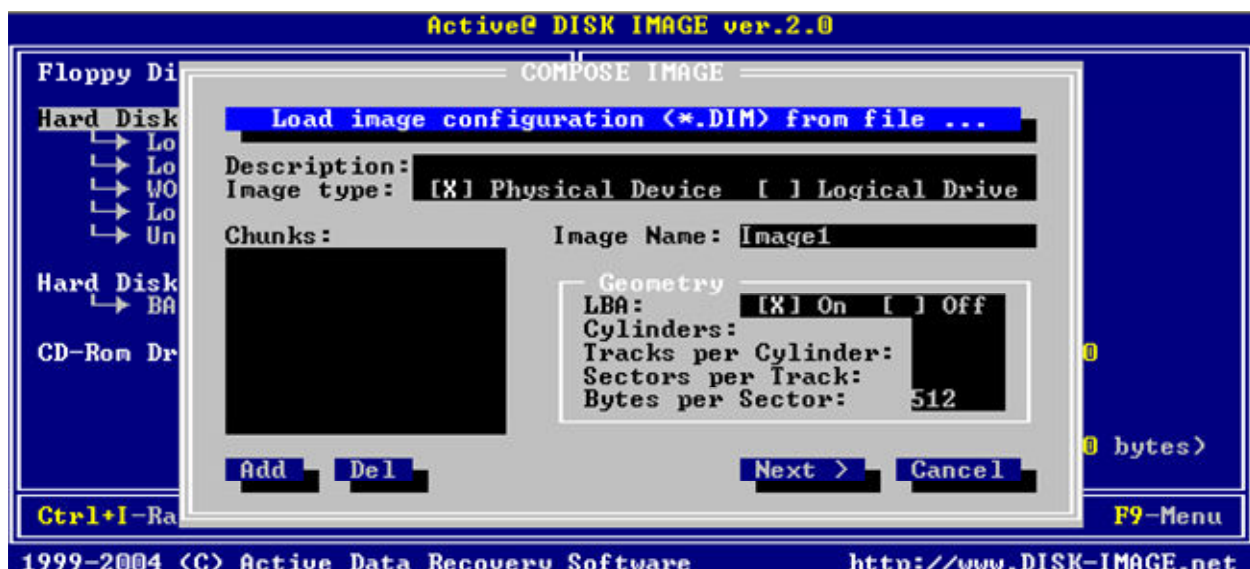
```

Created *C-image.DIM* file is a text file containing image parameters. Since files on FAT volumes are limited to 2GB, image file will be automatically splitted into 2GB data chunks. Image Data chunks would be: *C-image.000*, *C-image.001*, *C-image.002*, etc...

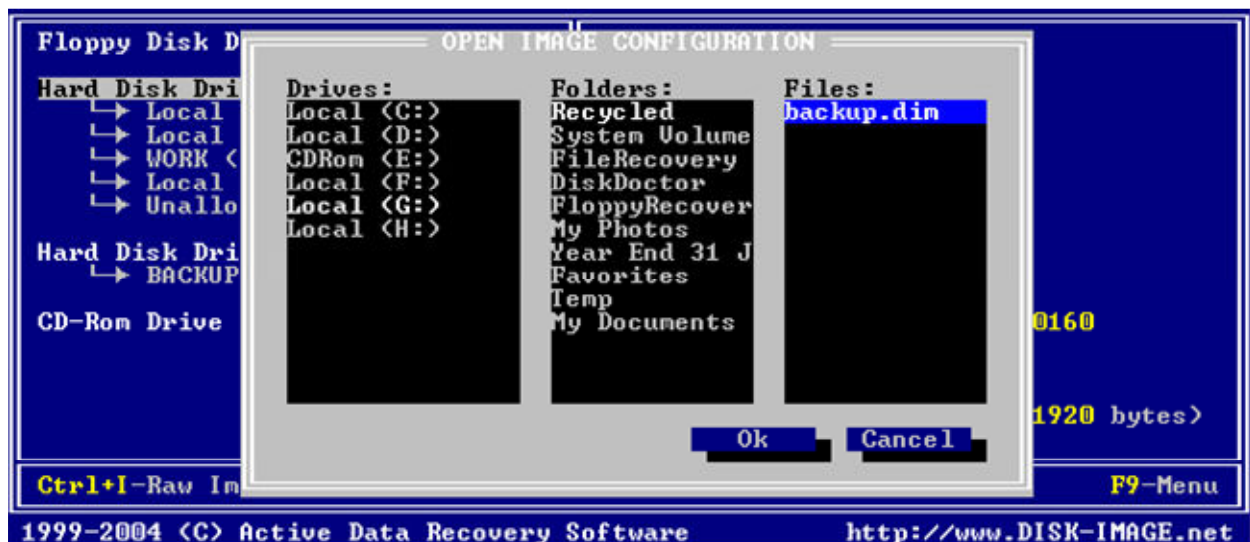
If there is not enough space exists on a target drive, you will be prompted for another location where you want to store remaining chunks.

## Disk Image restoration

- Start Active@ Disk Image
- Press **[Ctrl]+[R]** to launch Disk Image Restoration dialog:

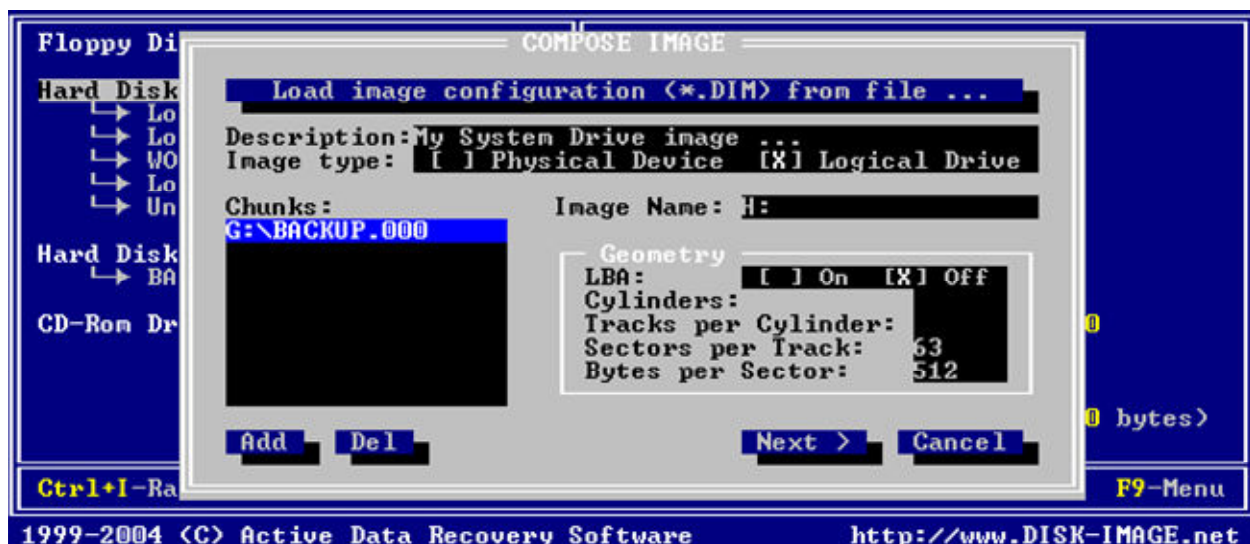


- If you have created an image using Active@ Disk Image earlier (there is a valid configuration (\*.DIM) file), press **[ENTER]** or **[Space]** to load image info from the image configuration file:



- Use arrows and **[TAB]** key to move between drives and folders tree. When you found and selected valid \*.DIM file in *Files:* box, press **[ENTER]**. In the example above "backup.dim" file located on "G:\\" is chosen.

- Information from image configuration file will be loaded into the memory and you will see image parameters in dialog:



Verify image parameters: Description, type, chunks, geometry and press **[NEXT>]**

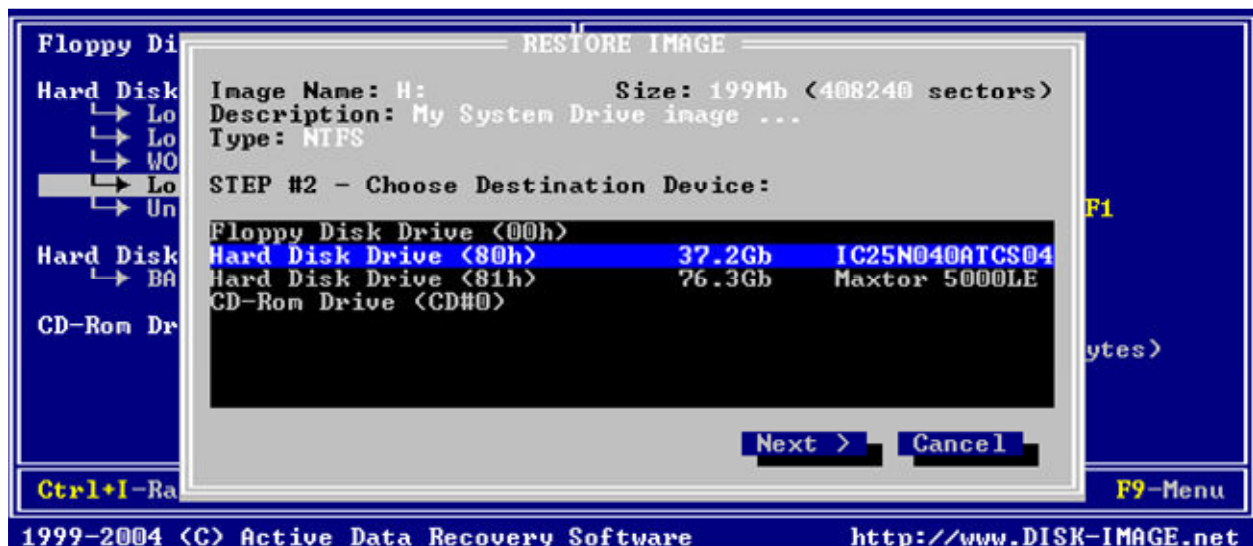
- If you have created an image using previous v. 1.0 of Active@ Disk Image or other tools (i.e. you don't have a configuration \*.DIM file), you are to compose an image from chunks and set up image parameters properly before you can start image restoration:

Use **[TAB]** and arrows to move through dialog controls and specify the following parameters:

- Image Type: *Physical Device* (for HDD) or *Logical Drive* (for a partition)
- Chunks: press **[Add]** button to locate and add all drive image's chunks to the list
- Chunks may be located on one drive or on different locations
- Drive Geometry (for HDD images only)

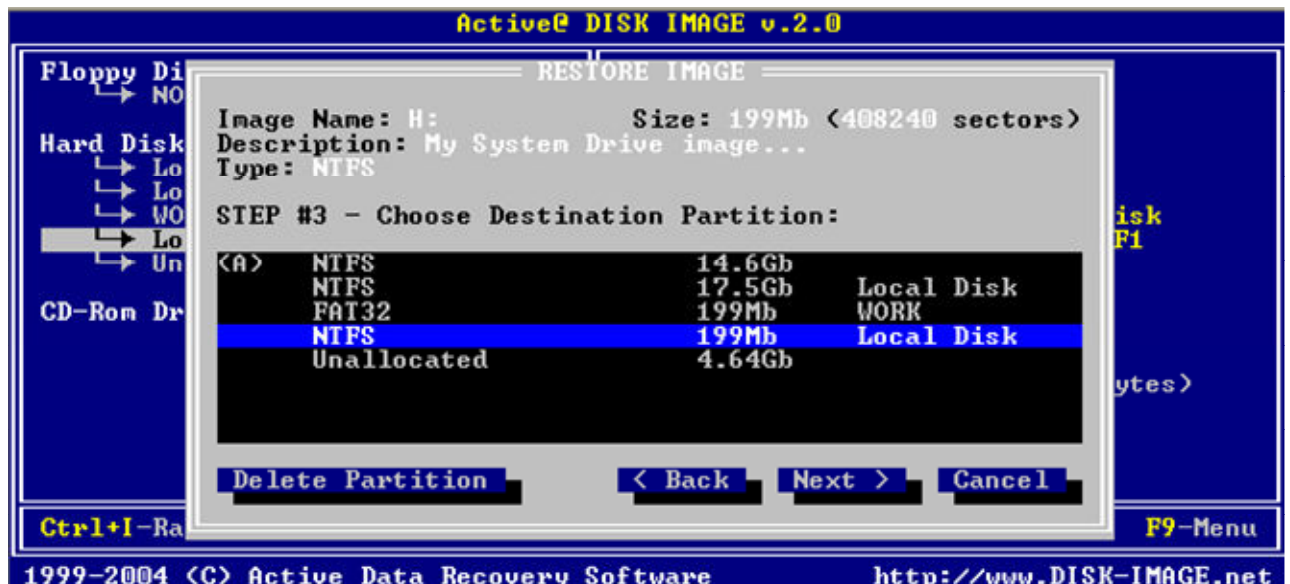
Despite you can manually specify list of data chunks and set image parameters, we urge you always to use .DIM files

- Destination Drive dialog will appear:



Using arrows, select Hard Disk where you want to restore image to and press **[NEXT>]**.

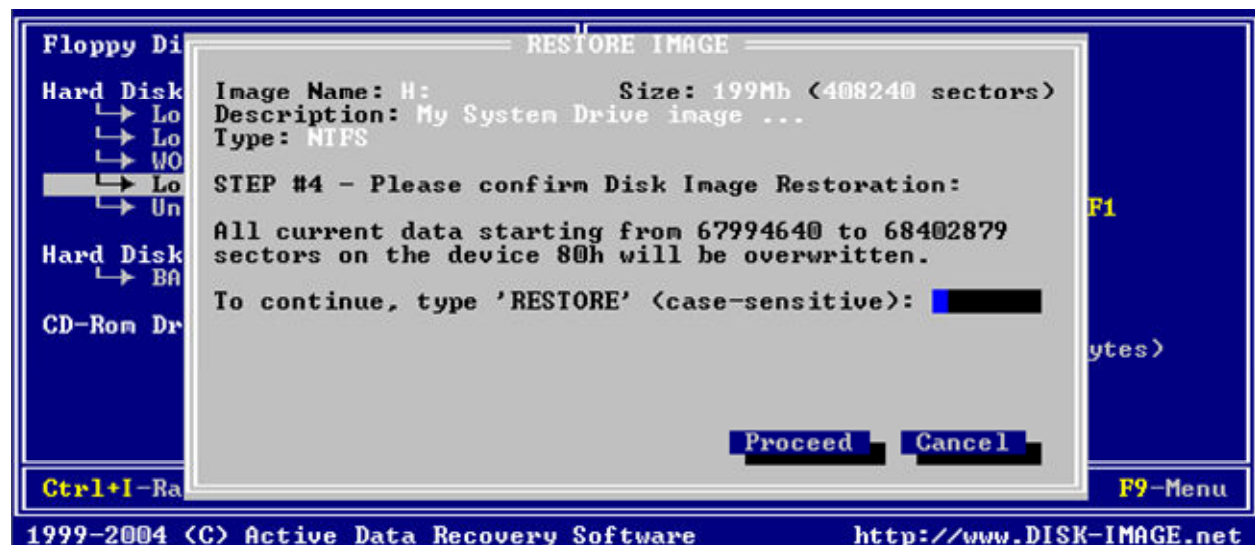
- If you are restoring a disk image of a partition (logical drive), Destination Partition dialog will appear:



You can:

- select an existing partition (having size equal or large) to restore disk image to
- restore it to **Unallocated** space
- delete existing partition and restore to **Unallocated** space that would appear
- set **Active** flag to assign boot priority to partition being restored

- After pressing **[NEXT>]** you will see a final confirmation dialog:



- Type: **RESTORE** (case-sensitive, in uppercase) and press **[ENTER]** to proceed with disk image restoration. Be careful, data located on the drive where you want to restore image to will be completely overwritten by image data, and no recovery would be possible thereafter.
- You will see a progress of image restoration. To stop the process anytime - press **[ESC]**.
- After restoration is complete you will be prompted to reboot the machine.

## Working with Disk Images

### Checking Disk Image for consistency

Checking of disk image consistency is needed when you are not sure whether disk image is safe or not to be recovered. For example some chunks are missing in configuration file, or bad clusters were recently detected on the drive where disk image is located. This could affect future recoverability of disk image, so it is recommended to perform this procedure when you are not sure of image condition.

To check disk image for consistency:

- Start Active@ Disk Image
- Go to top menu **[F9]** then menu *Image* -> *Check Image*. Or press **[Ctrl]+[C]**
- Load image configuration file (\*.dim) or compose image from chunks the same way as it was explained in **Disk Image Restoration** section
- Press **[OK]** in Compose Image dialog to initiate a check process
- See progress and checking result. You can stop a process any time by pressing **[ESC]**

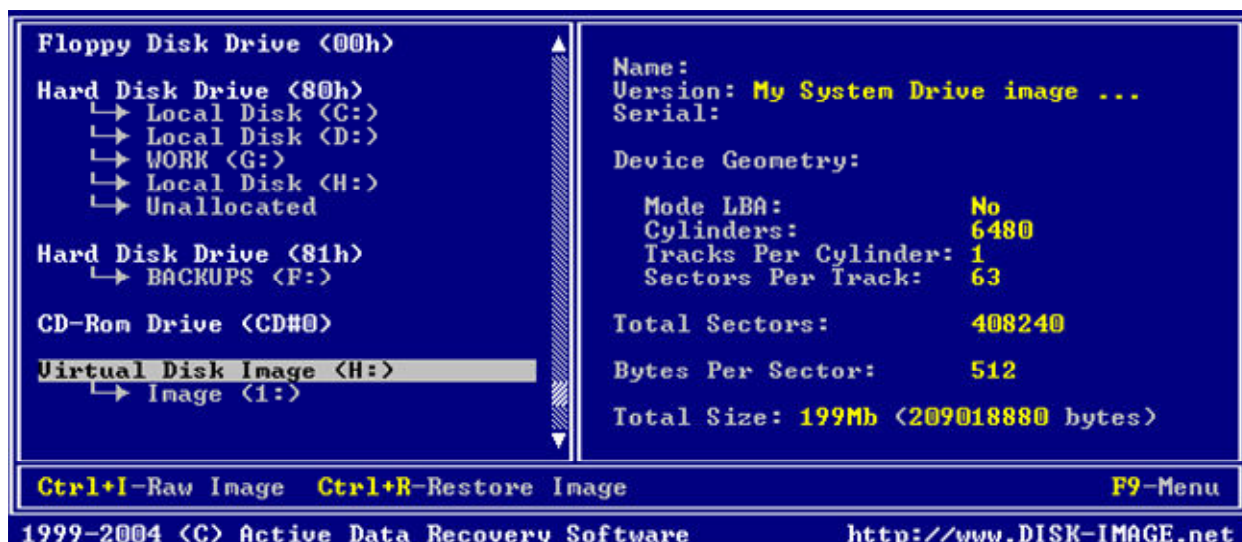
### Copying files and folders from of Disk Image to another location

After completion of disk image creation you can open a disk image, see its folder structure and copy some files and folders from image to another location.

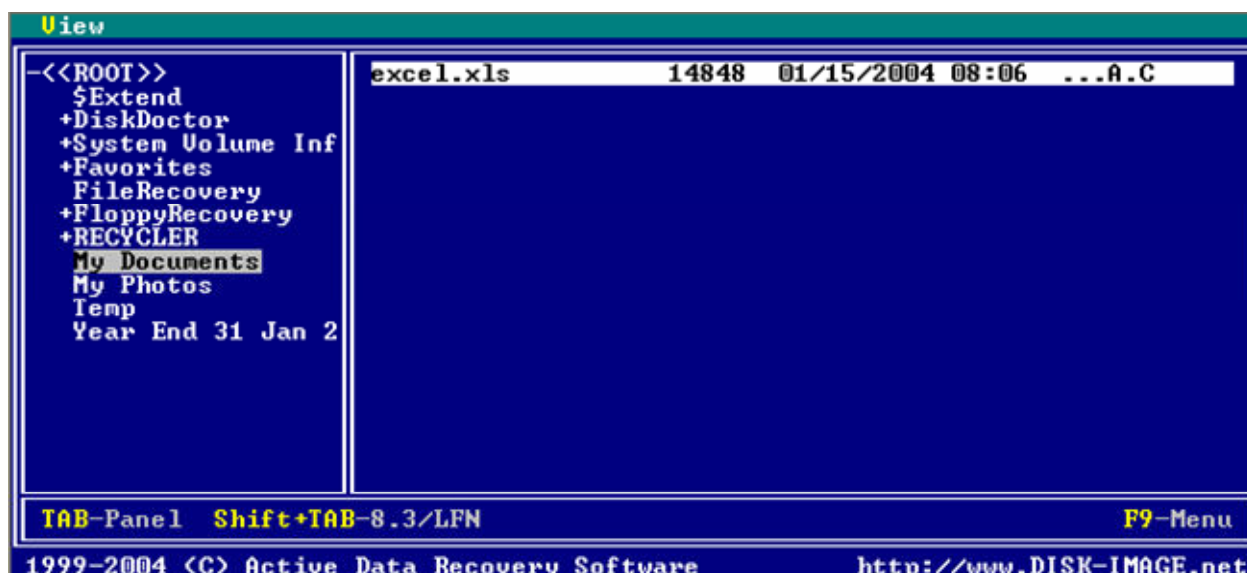
To open disk image and to copy files and folders from it:

- Start Active@ Disk Image
- Go to top menu **[F9]** then menu *Image* -> *Open Image*. Or press **[Ctrl]+[O]**
- Load image configuration file (\*.dim) or compose image from chunks the same way as it was explained in **Disk Image Restoration** section
- Press **[OK]** in Compose Image dialog to open and add disk image to the list of available devices. After this list is refreshed, marker will be positioned on your image:





- Position a marker to logical drive ( *Image (1:)* in the example above) and press **[ENTER]** to scan a disk image for files and folders
- Use arrows, **[ENTER]** and **[TAB]** keys to go through the folders tree until you find file or folder you want to copy from the image to another location:



- Press **[Ctrl]+[C]** to invoke destination location dialog for the files and folders to be copied.
- Choose destination location and press **[ENTER]** to start copying progress.

## Long file names display

Starting from Windows 95, file name is not limited to [8.3] pattern anymore and can have the length up to 255 characters.

Standard View displays all files and folders the same way as DOS does, i.e. forms file name using [8.3] format and displays it. However sometimes it is not convenient to see the only first several symbols of the long file name.



To display long file names:

- Boot in DOS mode and run Active@ Disk Image
- Position marker to the particular drive, or opened disk image
- Scan the drive and folder by pressing **[ENTER]**
- Press **[SHIFT]+[TAB]** key to switch to long filenames view

## Using Disk Viewer

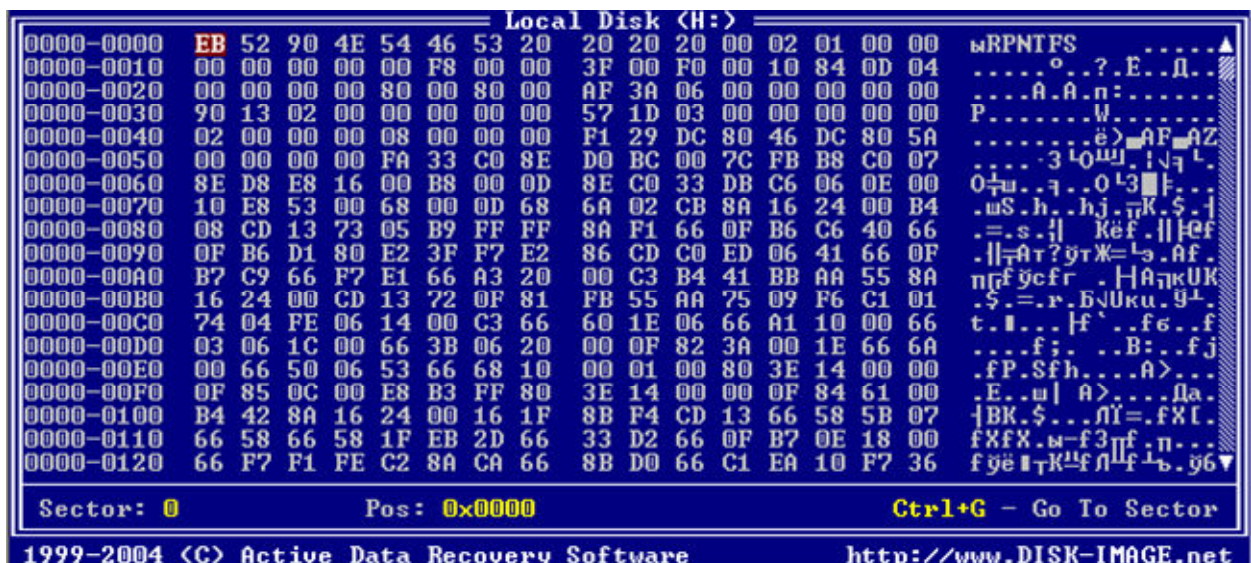
Disk Viewer allows you to view any sector on the physical or logical drive. It can also display the file content in hex or text form.

To use Disk Viewer to view raw drive's data:

- Select the HDD to view physical sectors or Logical drive to view logical sectors
- Press the **[Ctrl]+[V]** to open Disk Viewer

To use Disk Viewer to view file data:

- Select a Logical Disk containing files you are interested in
- Press **[ENTER]** to scan the disk, then go through the folder tree and set the marker to the file you are interested in
- Press the **[ENTER]** (or select *View File Data* from *View* menu) to open Disk Viewer



The title displays the object to be viewed and the current sector number will be shown below. The rest of the area displays sector content in Hex view on the left side and Text View on the right side.

- Use arrows, [**HOME**], [**END**] keys to scroll the view
- Use [**Page Down**], [**Page Up**] keys to go to the next/previous sector
- Press [**Ctrl**]+[**G**] to go to the particular sector
- Press [**TAB**] key to toggle between Hex view and Text view (available for files only)

## Menu Commands

Being in main program window, press [F9] in order to enter main menu.

### File | Refresh Devices

Refresh list of devices and disks. Might be useful after opening a disk image though device list will be refreshed automatically or after changing diskette in floppy drive

### File | Save Hardware Info

Save information about all devices and disks presented in the system into text file (testfile.dat by default). Use this command to make info file before contacting technical support in case of problems

### File | Save Log

Save activity log into text file

### File | Exit

Exit the program

### View | Activity Log

View activity log in new window. Press [ESC] to close log window and return to main window

### View | Sectors in Hex Viewer

View contents of selected disk in Hex Viewer. Press [ESC] to close Hex Viewer window and return to main window

### View | Drive Scan

Show the contents (files and folders) of selected disk (partition)

### Image | Create Raw Image

See section Disk Image Creation

### Image | Create Data Image

See section Disk Image Creation

### Image | Open Image

Open disk image and add it to the list of devices. You can view the contents of opened image and view/copy selected files from image.

### Image | Check Image

See **section** Checking Disk Image for consistency

### Image | Restore Image

See section Disk Image restoration

## FAQ

### Why do I receive an error message while trying to save the disk image or restore it?

#### **Problem:**

While saving or restoring I receive an error message saying "Error writing physical sector".

#### **Reasons:**

1. You attempted to run the software from Windows 95/98/ME "MS-DOS Prompt" console.
2. Hard Disk Drive is physically damaged (i.e. has bad clusters).

#### **Solutions:**

1. DO NOT try to run the software from under Windows Operating System! Boot your computer in "Command Prompt" mode (press [F8] when Windows 95/98 boots) or boot from the floppy disk. See section OPERATING PROCEDURE about running the application.
2. If your HDD is physically damaged, it's better to copy all important data from there and use another Hard Disk Drive or you are at risk of losing your data.

### What is the difference between *Raw Image* and *Data Image*?

**Raw image** – image containing **all** drive's data – an exact copy of drive's surface stored in one or set of files. It includes used as well as unused clusters and sectors. This means that all existing and even some deleted files would be mirrored to another location. *Raw image* has usually size larger than *Data Image*, but gives full picture of data, no one bit of data is missed in this case.

**Data Image** – image containing the only **used** drive's clusters. *Data Image* is applicable for logical drives and partitions only. When you recover Data Image later on – all unused clusters would be just zeroed. This approach however can save you a space and increase a speed of disk image creation. Since Data Image operates with term used clusters, it applicable to partition (logical volume) only, because only they have file structure. You wouldn't be able to make a data image of entire disk – only raw image.