

# WinImage 5.00

© 1993-1999 Gilles Vollant

Portions © Jean-loup Gailly and Mark Adler (ZLib)  
Portions © Christoph H. Hochstätter  
Portions © François Liger  
Portions © Microsoft™

<http://www.winimage.com>

English documentation translated with the assistance of Joël Demay, Michael Segall, Peter Sohn, Matthew Gardiner and John Buettner.

German version translated with the assistance of Walter Scheffel.  
Spanish version translated with the assistance of Diana M. Galindo P. and Amando Senra  
Italian version translated with the assistance of Roberto Paterlini.  
Portuguese version translated with the assistance of Nuno Dionísio and Vítor Bueno.  
Brazilian version translated with the assistance of Marcello Elston.  
Dutch version translated with the assistance of Geldof Georges and Pyra Lucien.

WinImage 5.0 is fully year 2000 compliant.

## ***WinImage - The Disk Image Management Utility***

[What is a disk image file?](#)

[WinImage standard, professional and developer edition](#)

[WinImage self-extractor](#)

[WinImage SDK](#)

[Using WinImage](#)

[About DMF](#)

[Hard disk image](#)

[File Menu](#)

[Image Menu](#)

[Diskette Menu](#)

[Option Menu](#)

[Batch assistant](#)

[WinImage past and future](#)

[WinImage command line options](#)

[Acknowledgements](#)

[Where to find WinImage](#)

[Registering](#)

**- ASP Member -**

WinImage is a shareware product from an ASP member. You may copy and distribute WinImage as long as no fee is charged. You may charge a small fee to cover the diskette cost and shipping only. WinImage must be distributed in its entirety, and include all of the files from the author.

## What is a disk image ?

**A disk image** is a file which is an exact and complete image of a floppy disk. The image contains information on the disk format and structure, such as FAT, boot sector, directories, and all files.

By using WinImage, you can create an exact copy of an original disk, including non-standard capacity and format disks.

As an example, you can read a floppy disk and copy it as one image file to your hard disk. Later, without using the original floppy disk, you can extract any file from the image - just as if you had copied the file from the original floppy disk itself.

You can create exact copies of the original disk onto new floppy disks.

You can also create disk images with WinImage. For example. If you want to put five files, taking 1.3 Mb, on a 3"1/2 HD that has a normal capacity of 1.2Mb, you can create an empty 1.44 Mb image on the floppy, inject the five files into it from the hard disk, and in one operation you have formatted the floppy and written the image on it.

Unlike the DOS DiskCopy command, WinImage can format and use very large-capacity and non-standard disk formats. As an example, a 3"1/2 HD floppy can be formatted out to 1.72 Mb and a 5"1/4 HD can be formatted out to 1.44 Mb.

**Windows 3.1 and MSDOS.** When reading a DMF, 1.68 or 1.72 MB floppy formatted by WinImage under MSDOS and Windows 3.1, the TSR utility FDREAD.EXE must be loaded at DOS level (first) if you wish to read and write non-standard formats. FDREAD.EXE is a freeware program from Christoph H. Hochstätter. If you will be using standard formats only, FDREAD is not needed.

**Windows'95/98 and NT.** FDREAD.EXE is not needed under Windows 95/98 and Windows NT.

Once loaded, you can extract files from an image to any floppy, hard disk or network disk.

You can add files to an image.

The image can be copied onto a floppy (which must have the same format), or saved in a file.

An image file contains all the sectors of a floppy disk. If it's not full, you can truncate unused image parts, making the image file smaller.

WinImage can read images created by other disk copy utilities.

- Wimage (in FdFormat utility) from C.H. Hochstätter

- CopyVit from Sébastien Chatard

- DrDos 6

- OS/2 2.x and 3.x

- DCF (Disk Copy Fast) from Chang Ping Lee

- DF (Disk Image File Utility) from Mark Vitt

- Super-DiskCopy from Super Software

- SabDu from S.A. Berman

- Disk-RW from K. Hartnegg

- DiskDupe from Micro System Design

and the internal Microsoft and Lotus image features and utilities along with the MFMT sample Windows NT application that comes with the Windows NT SDK.



## WinImage Standard, Professional and Developer Edition

**There are two versions** of WinImage : standard and professional.

Registering options are different :

WinImage 5.0 Professional - price for NEW USERS of WinImage is \$60.

WinImage 5.0 Standard - price for NEW USERS of WinImage is \$30.

WinImage 5.0 Standard - price for registered users of any previous version of WinImage is FREE

WinImage 5.0 Professional - price for registered users of any previous version or WinImage 4.0/5.0 Standard is \$30.

WinImage 5.0 Professional - price for registered users of WinImage 4.0 Professional is FREE.

WinImage 5.0 Developer Edition - price for NEW USERS is \$200.

WinImage 5.0 Developer Edition - price for registered users of WinImage Professional is \$150

WinImage Professional adds all these feature to WinImage standard:

- Self extractor with unlimited redistribution license.
- File Properties - allows modification of file dates within image.
- You can export the directory of the current image in text or HTML.
- Printing of the directory of the image
- Edit boot sector properties (i.e. load another boot sector file, edit text in the boot sector...)
- Supports the creation of large images of removable and hard disks under Windows NT and Windows 95. Large images (> 2.88 MB) are not loaded in memory, read and write operations are done directly in image files.

WinImage Developer Edition contain WinImage Professional, the WinImage SDK and a licence to distribute software made with WinImage SDK and the WinImage SDK DLL on 10 (ten) computers.

Note: the upgrade for registered users of WinImage versions 1.0, 2.x, 3.0 or 4.0 standard to 5.0 standard is free. The upgrade from WinImage 4.0 professional to 5.0 professional is also free.

If you don't have a WinImage Professional license, you can use the Professional version for 30 days (30 REAL days : if you start testing on July 1st and use it only on even numbered days, you can use it until September 1st).

At that time, you'll be automatically switched to standard mode.

## WinImage self extractor

With WinImage's self extractor, you can create a Win32 x86 .EXE file with one or several image files.

If you are a registered user of WinImage professional, you can redistribute this executable without restriction.

The file.exe you create can be used under Windows NT-x86, Windows 95/98 and Windows 3.1 with Win32s 1.30c installed.

How to create a self-extracting file:

- Create a .IMZ or a .WLZ file with WinImage
- Under the File menu, select Create Self-Extracting file...
- in the "Select source Image file" screen, click on "Select an image source file" and select the .IMZ, .WLZ or .IMA
- in the second screen, select the .EXE file to create

To create a self-extracting file with one image, you can also open this image and Under the File menu, select Create Self-Extracting file... Then create the EXE from the image in memory.

After selecting the source of the image file, choose the default command line options of self-extractor. The self extracting executable accepts the following options :

A:	Write to floppy A: (or B:)
/F :	Format floppy when writing
/N:xx :	When writing a floppy, select the number of sets (xx is number>1)
/X directory :	Select file extraction to specified destination directory
/NI :	Don't increment directory when file extraction is selected
/W:xxx :	Writing image file xxx
/H :	Hide dialog
/B :	Stop reading command line (ignore options following)
/QF :	In self extractor command line to hide "insert floppy disk" dialog

These options can be embedded in the .EXE with SFXSETUP.EXE, or when running the .EXE (the SFX runs the embedded option first, and EXE command line after).

If you specify the /B option at the end of a command line (when creating an SFX executable file), command line options specified by the user, when starting the .EXE will be ignored.

## WinImage SDK

The WinImage SDK is a Win32 DLL, with C, Visual Basic and Delphi importation files. With the WinImage SDK, you can create a Win32 application that can read and write floppies, read and write image files, extract files from images, inject files into images and other Basic WinImage functionality.

The WinImage SDK is an additional product, based on the WinImage technology. For download an evaluation version or for more information, visit the Web site [http://www.winimage.com/wima\\_sdk.htm](http://www.winimage.com/wima_sdk.htm).

The WinImage Developer Edition contain WinImage Professional and the WinImage SDK.

## Using WinImage

**You can load** an image into WinImage by either reading a floppy, reading an image file, or creating an empty image.

When an image is loaded, WinImage shows the files and directories present. You can change directories by double-clicking on the directory. You can return to the parent directory by double-clicking on the parent or first entry ("..").

WinImage can load an .ISO CD-ROM image file, in read only mode.

The image is loaded into memory. When there is no image loaded, some features are not available.

You can create a directory, delete or add files in the image from the toolbar or the Image menu option. You can use drag-and-drop from the Windows File manager to WinImage to inject data into an image, or from WinImage to another application to extract from it.

**You can extract** files in three ways: From the Image menu option or toolbar icon, by launching a file by double-clicking on it, or by dragging it to another application.

WinImage allows you to drag the image file from WinImage to another application by placing the mouse pointer onto the status bar or in the toolbar background. Press the left mouse button and keep it depressed, slide the pointer onto another application (drag and drop client), and release the mouse button. This original function allows you to add the image to a .ZIP or .ARJ file when using Nico Mak's WinZip utility, or attach the image to an e-mail created with Microsoft™ MS-Mail, or Lotus™ Notes or ccMail.

I suggest that you do not use the 820 KB or 1.72 MB formats, because Windows NT can not read them. I suggest that you use the DMF or the 1.68 MB format instead.

You can start WinImage with options in the command line:

'WINIMAGE [source [destination] [options]]'

'WINIMAGE file.ima' : Load the file file.ima

'WINIMAGE file.ima A:' : Load the file file.ima, write on A: and exit

'WINIMAGE A: file.ima' : Load from floppy A: and save file.ima

WINIMAGE /MAKESFX imagefilename.??z imagesfx.exe <command option>: Create a self-extractor file using a .wiz or .imz file, and with <command option> default option for the SFX file.

Option :

/F : Format when writing a floppy from the command line

/E : Do Extract (second parameter can be destination)

/X : Do Extract with sub-dir (second parameter can be destination)

/Q : Always exit after command line operation

/H : Hide the main WinImage window

/NX : Never exit after command line operation

/Nxxx : Create a new image (where xxx is DMF1024, DMF2048, 144, 120...)

/Txxx: Transform image size (where xxx is DMF1024, DMF2048, 144, 120...)

/I xxx : Inject file or directory xxx

/NOASPI : Disable the ASPI device checking in start (this disable CDRom image creation option under Windows 95/98)



## About DMF

**DMF and 1.68 MB** formats are the same physical format of 80 tracks and 21 sectors per track. The 1.68 MB format has 224 entries in the root directory, and a cluster size is 512 bytes. DMF format has *only 16 entries* in the root directory (you need create a subdirectory to copy more than 16 files), and the cluster size is 1024 (DMF 1024) or 2048 bytes (DMF 2048). You can check the cluster size in the Image Information...

Microsoft uses DMF 2048 for the floppy version of some of their newer software. Windows 95/98 and Windows NT 3.5x read and write directly in DMF format. You will need FDREAD for this format under MSDOS or Windows 3.1.

1.72 MB format uses 82 tracks and is not compatible with Windows NT. 1.68 MB and DMF are the same physical format, and are compatible with Windows NT. I highly suggest you don't use 1.72 MB.

Some Microsoft DMF floppy disks contain information to make them write-protected under Windows 95/98 or Windows NT 3.5x. To write to these floppy disks, you will need to reformat them first to remove this.

The DMF 2048 format is often used for distribution floppies under Windows 95/98 and Windows NT. Under Windows 95/98, unlike other operating systems, formatting for DMF uses the BIOS. This may cause compatibility problem on some computers. If you experience such problems, I suggest you try the following:

- If your system has a flash BIOS, upgrade the BIOS to the latest release. If you have an Intel motherboard, you can find BIOS upgrades at <ftp://ftp.intel.com/pub/bios>.
- Format the floppy to 1.44 MB before trying DMF.
- Try to get more conventional memory (ideally by having a near empty config.sys) .
- Try using both winimage.exe and winima16.exe under Windows 95/98. (Ignore the message from winima16.exe that suggests not running using this O.S.) . Note : The latest 16 bits version of WinImage is WinImage 3.0.
- download FDFormat (<ftp://ftp.coast.net/pub/Coast/msdos/diskutil/fdform18.zip> or from <http://www.winimage.com/otherl.htm>). Under DOS (or the Windows 95/98 command line without the graphical interface - this is accomplished by pressing F8 and selecting 6 when booting) try 'FDFORMAT A: F168'. As is true with WinImage, FDFormat uses the BIOS. If FDFormat cannot format a disk at 1.68 MB, WinImage will also be unable to.

Some problems with DMF formatting under Gateway 2000 computers can be solved by downloading a BIOS update from the Intel FTP (<ftp://ftp.intel.com/pub/bios>) or their web site (<http://www.intel.com>).

Under Windows 95/98, the following options are available In the Options Settings, Disk tab:

- If *Use new DMF format technology* and *Use new DMF technology for writing data* are both selected, WinImage will use the new 3.0 DMF formatting code by default.
- If *Use new DMF format technology* and *Use new DMF technology for writing data* are both unselected, WinImage will use a slightly fixed version of the 2.5 DMF formatting code.
- If *Use new DMF format technology* is unselected, WinImage uses the same code as version 2.20 to format.

**Some DMF related problems** can be corrected by adjusting the disk gap. To change this setting, you must modify the registry. Be very careful! The key value to modify is HKEY\_CURRENT\_USER\Software\WinImage\iGapDmf. A value of "0" specifies the standard DMF GAP. A WinImage user needs "17" for a 2.88 driver.

Please report any problems solved by modifying the GAP.



## WinImage and hard disk Image

The professional version of WinImage can create images of hard disks and removable (SyQuest, Zip...) drives.

To create an image, select your disk on Disk menu, and select Disk Read disk. WinImage will ask you the name of the image to create. It'll read your entire disk, and open the image.

When WinImage opens a large image (hard disk or removable), it doesn't load the image in memory. All modifications (Inject, etc...) will be immediately committed in the image.

For writing the image on the disk, open the image in WinImage, select the disk in Disk Menu, and select Disk Write disk.

WinImage is a Windows application. You will need Windows to run WinImage to restore the image.

If the free space in the partition is defragged and at the end of the partition, and if you select "Ignore empty track in reading" in the Disk tab in Option settings, the image size will be reduced and will not contain free clusters

If you have a FAT32 partition (created by Windows 95 OEMSR2, Windows 98 or Windows 2000), you cannot read this partition under Windows NT 4.0. With File Connect Fat32 drive..., you can open your partition under Windows NT 4.0 (you need Administrative rights).

## File Menu

### **New**

Creates a empty new image. You must select a format (for example: 1.44 Mb).

### **Open**

Opens an image file.

### **Connect Fat32 drive**

This option exists only under Windows NT if you have a hard disk with a Fat32 partition. You'll open a Fat32 partition in WinImage.

### **Close image**

Closes the current image.

### **Save**

Saves the current image.

### **Save as**

Saves the current image with a new name.

### **Save as Text/Html**

This option exists only in the professional version. You can write a text or Html file with the directory of current image.

### **Print**

### **Configure printer**

These options exist only in the professional version. They allow you to print the directory of the current image.

### **Batch Assistant**

### **Batch Assistant wizard**

Opens the Batch assistant dialog box. The wizard option offers an alternative interface to select options, step by step.

**Create Self-Extracting file**

This option allows you to create a self-extracting executable which contains one or several images. If you are a registered user of WinImage professional, you can redistribute this executable without restrictions.

**Exit**

Quits WinImage.

## Image Menu

### Create directory

Creates a directory in the current image.

### Select

Selects files in the current image.

### Inject

Injects files into the current image.

### Inject a directory

Injects a complete directory or subdirectory, into the current image.

### Extract

Extracts files from the current image.

If no file is selected, WinImage extracts all files from the image by default. Otherwise it extracts only selected files.

Depending on the Confirmation option, you will have to specify the extraction path. (A dialogue box with some Preference fields is shown).

### Delete file

Deletes files from the current image, after asking for confirmation.

If there is no file selected, WinImage deletes all the files from the image by default, otherwise it deletes only the selected files.

### File properties

Change the file date (only in professional mode), attributes and name. The file can only be renamed when only one file is selected

### Change Label

Changes the volume label of the current image.

## **Boot sector properties**

You need the professional version to edit boot sector properties. With this option, you can change the OEM string of a disk, the serial number, or choose a Windows NT, MS-Dos 6.22, Windows 95/98 or WinImage (Reset button) boot sector. On a WinImage boot sector, you can enter the text displayed when booting the floppy.

## **Change size**

Changes the size of the current image.  
The new size must be greater than the total size of the files in the image.  
For example: a 1.44 MB image can be changed into a 360 KB image only if it has less than 60 KB of files.

## **Defrag current image**

Defragments the current image files.

## **Image information**

Shows information about the current image, and allows editing the image's comment.

## Diskette Menu

### **Use drive A: or B:**

Selects drive A: or B: to read and write floppies.

On a computer with two drives, this command lets you choose the physical drive you want to use for reading or writing disks.

In the professional version, you will also see the disk (hard disk and removable) drive, for disk image operation.

### **Format disk**

Formats a blank floppy.

### **Create CDROM Iso image**

Creates and opens an ISO image file from a CD-ROM.

### **Read disk**

Reads a floppy and stores the image in memory.

### **Compare disk**

Compares the current image with a floppy.

### **Write disk**

Writes the current image to a floppy.

### **Format and write disk**

Formats a floppy and writes the current image onto it.



## Option Menu

- Sort by Name
- Sort by Type
- Sort by Size
- Sort by Date

These options are used for displaying the files present in the image.

### Classic Listbox

Large Icon

Small Icon

List

Details

These options change the presentation of the directory in WinImage's main Windows. These are the same options as in the Windows explorer.

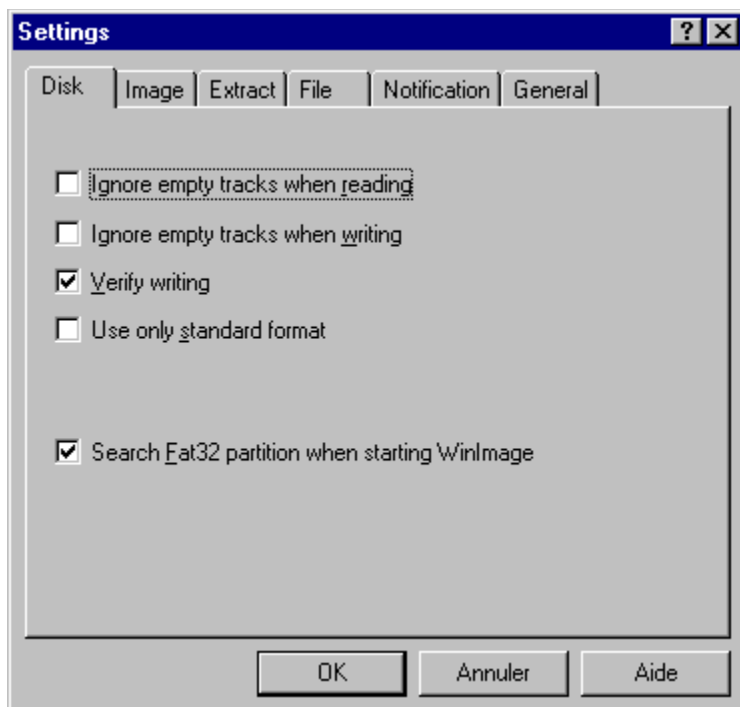
### Font

Changes the current font (used for displaying the files present in the image).

## Setting

All options appear in one tabbed dialog box.

### Disk Tabs



- *Ignore empty track when reading* : if this option is checked, when reading or comparing a floppy which isn't full, WinImage will ignore unused tracks.
- *Ignore empty track when writing* : if this option is checked, when writing an image to a floppy which isn't full, WinImage will ignore unused tracks.
- *Verify writing* : if this option is checked, WinImage verifies after writing to a floppy. This takes a bit more time, but you will be sure the new disk is readable.
- *Use only standard format* : if this option is checked, WinImage creates only standard floppies. Under MSDOS and Windows 3.1 FDREAD will then not be needed.

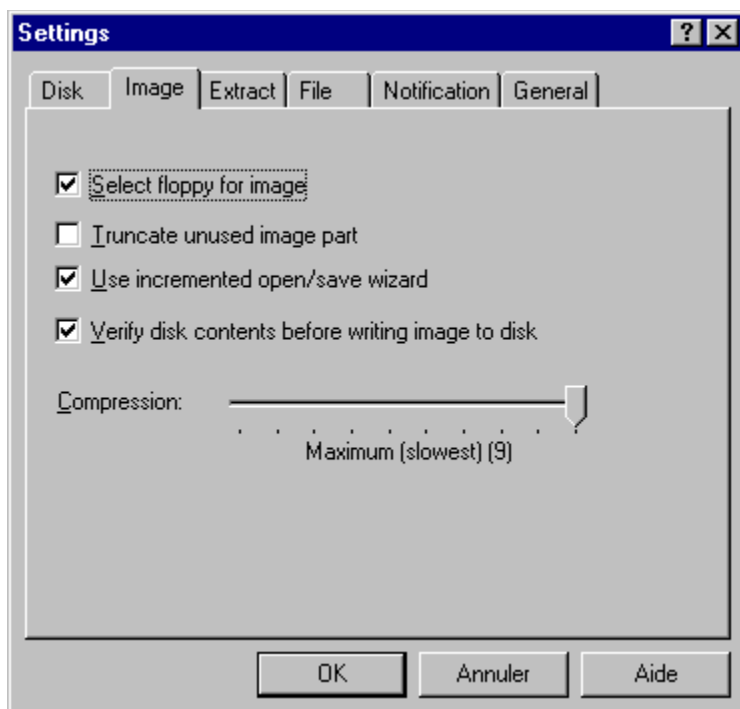
Under Windows NT, you'll have :

- *Search Fat32 partition when starting WinImage* : Asks WinImage to search a Fat32 partition in your hard disk. If it's found, you'll be able to connect on this partition.

Under Windows 95/98, you'll have these options :

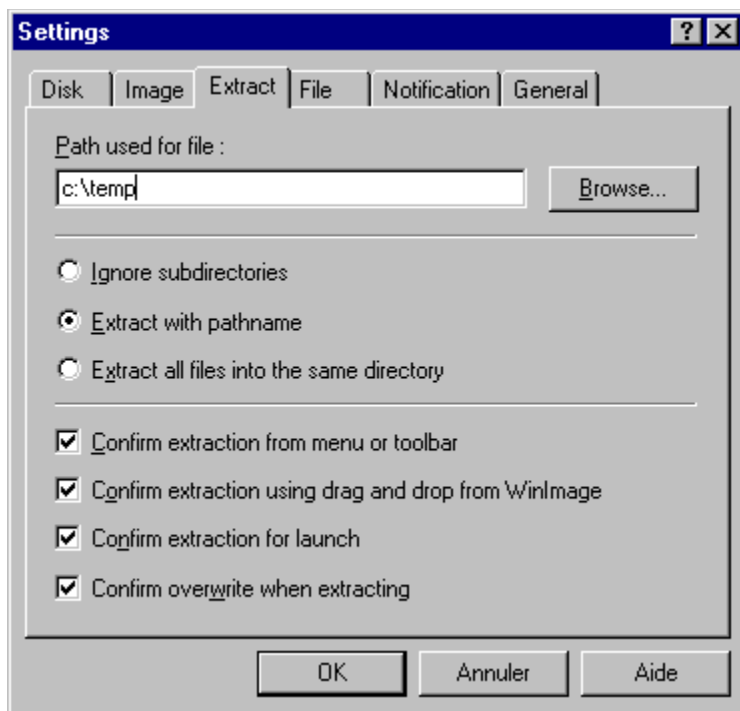
- *Use IOCTL* : Tells WinImage to use 32 bit IOCTL operations (except for formatting DMF, which is not affected by this checkbox). The default status is - checked.
  - *Use new DMF format technology* : If this is not checked, WinImage formats DMF in the same way as in version 2.20. If it's checked, it uses new code.
  - *Quick format in 1.44 MB before DMF* : If this is not checked, WinImage does a quick format in 1.44 MB before formatting in DMF. It seems to be difficult to format a blank floppy in DMF without formatting first as 1.44 MB.
- For more info on DMF, see the DMF section.

### Image tabs



- *Select floppy for image* : if this option is checked, WinImage selects a floppy type appropriate for the image in memory. (If you load a 360Ko image, WinImage selects a 5"1/2 floppy format).
- *Truncate unused image part* : if this option is checked, WinImage reduces the size of the image when writing an image file which isn't full.
- *Use incremented open/save wizard* : if this option is checked, WinImage increments the filename by 1. As example: after opening (or saving) "DISK01.IMA", WinImage proposes "DISK02.IMA" or the next file name.
- *Verify disk content before writing* : if this option is checked, WinImage asks for confirmation before writing to a disk which already contains data.
- *Compression* : select the level of compression when saving compressed image file.

### **Extract tabs**



- *Path* : Here you specify where to get the files to form the image.

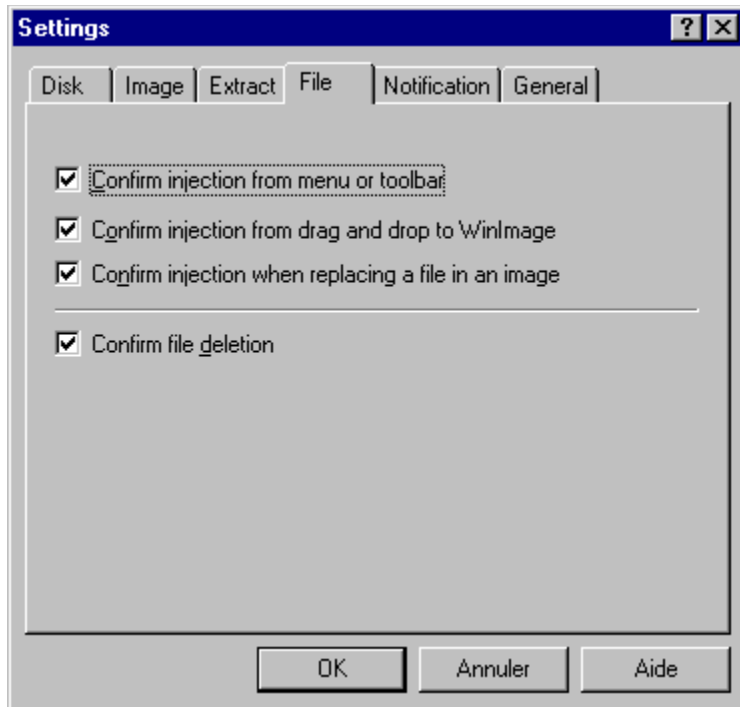
The following options are for extracting subdirectories.

- *Ignore subdirectories* : WinImage won't extract the subdirectory(s) selected.
- *Extract all in the same directory* : WinImage extracts all the files in a subdirectory of the image in the Path location.
- *Extract with pathname* : WinImage extracts files from a subdirectory of the image to a subdirectory of the Path location.

The first three checkboxes control the display of the confirmation dialog box when extracting files.

- *Confirm overwriting when extracting*: if this option is checked, when extracting risks overwriting a file, WinImage will ask for confirmation before proceeding.

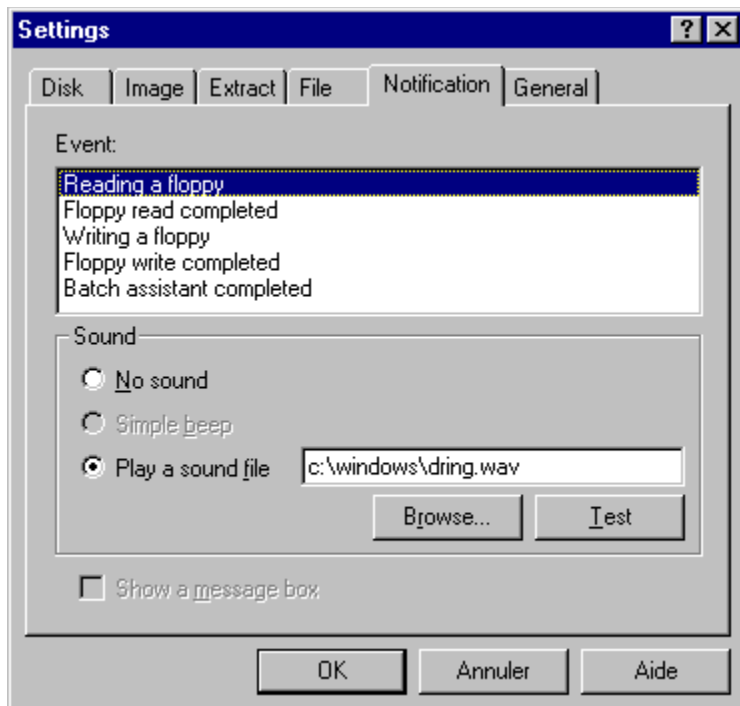
### **File tabs**



The first two options allow you to enable/disable the use of a dialog box when injecting files. The third asks for confirmation when replacing files.

- *Confirm file deletion* : this option controls the display of the confirmation dialog box when deleting files on image.

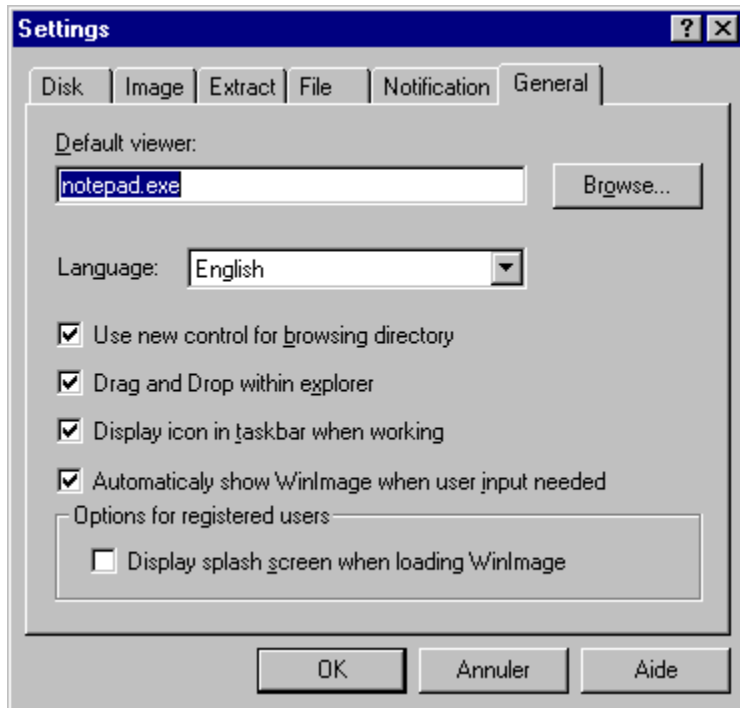
### Notification tabs



Select sound and message

With this option, you can ask WinImage to play a sound, beep, play a .WAV or .MID file. Under Windows 95/98 or NT, .AVI files can also be played.

### General tabs



- *Default viewer* : defines the viewer application launched when double-clicking on a file without association.

- *Use new control for browsing directory* : select the control used for searching a directory.

- *Drag and Drop within explorer* : allows user to extract files by dragging from WinImage to the explorer (and the desktop)

- *Display icon in taskbar when working* : when WinImage works on floppy or in batch assistant mode, it displays an icon in Win95/NT4 taskbar. It blinks when user input is needed.

- *Automatically show WinImage when user input is needed* : When user input is needed (change floppy, error, etc...), WinImage pops up automatically. This allows you to minimize WinImage during long operations (floppy...), and be sure not to forget it!

- *Options for registered user* : see [Registering](#).

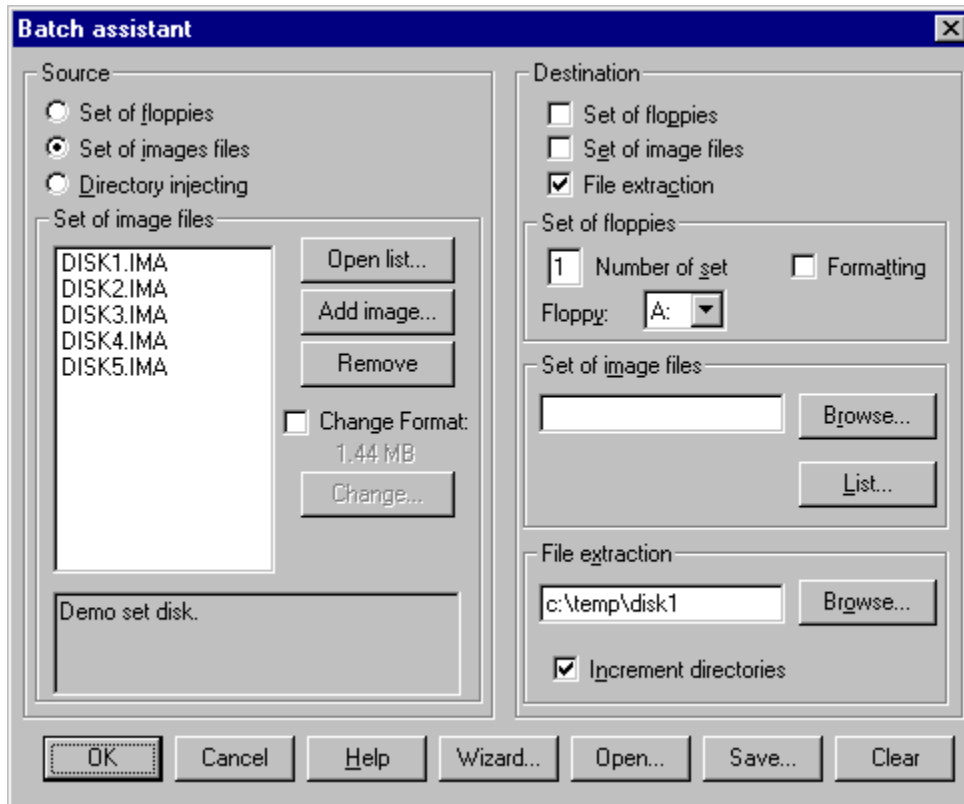
## Batch assistant

By using the batch assistant, you can chain operations on several images.

There are two different interfaces of the Batch assistant :

- With File Batch Assistant, you'll have all settings in one dialog box
- With File Batch Assistant wizard, you'll have several dialogs boxes, step by step.

When selected, this dialogue box appears.



When WinImage executes a batch, it repeats the sequence of :  
creating an image in memory reading a *source*, and saving this image for saving to a *destination*. When the source has no image, the batch is complete.

The following sources can be selected.

- Set of floppies : WinImage will read floppies. You need to tell WinImage how many floppies you want to be read.
- Set of images files : WinImage will load images. You can open a list file (.WIL), a set of compressed image (.WLZ, a ZIPfile with a .WIL and several .IMA) or add some images manually.
- Directory injecting : WinImage will inject directories into an image. If the directory name contains a number, it can increment the directory name, and make an image for each directory. If a directory is bigger than an image, WinImage will make several images.

The following destinations can be selected.

- Set of floppies : WinImage will write to floppies. You tell WinImage if you want it to format also.
- Set of image files : WinImage will write images. You specify the filename of the first, and WinImage increments the subsequent filenames and you can optionally make a list file (.WIL) with a comment. Or you can create a set of compressed images (.WLZ): one file will contain the list and all images.

- file extraction : WinImage will extract files from an image to directories that you specify. It can also increment the directory name.

In this example, WinImage is configured to extract the file images DISK1.IMA through to DISK5.IMA, to directories c:\temp\disk1 through c:\temp\disk5.

Before running the batch, you can save your configuration in a batch configuration file (.BWZ). This file can be opened later to run batch with same parameters. Like .WIL, BWZ files are text readable files.

## Evolution of WinImage

### April 1999 : Version 5.00

- File Properties allow the modification of filename and attributes of files within the image.
- Better international support: WinImage and self-extracting files can now be translated into far-east languages (like Japanese).
- The CD-ROM ISO image creation option is now compatible with Windows 95/98.
- Inject and Extract progress dialog boxes contain a "Stop" button.
- The delete option can now delete non-empty subdirectories in an image (and do recursive delete).
- The opening of Fat32 is faster and has better support of large FAT32 partitions.
- The documentation now states WinImage's Year 2000 compatibility (but previous versions were already fully Y2K compliant).

And only in professional mode:

- File Properties allow the modification of file dates within the image.
- Self extractor file creation is now integrated into the WinImage interface, and SFX executable are now translated (in WinImage 4.0, SFX file were only in English).
- More options in the self extractor

And the WinImage Developer Edition, with WinImage SDK and WinImage professional is released

### July 1997 : Version 4.00

- Command line option
- There is now a true wizard (several screens with Next and Previous !) as an alternative to the Batch assistant dialog box.
- Under Windows NT, WinImage can directly open a Fat32 partition on the disk (useful because Windows NT 4.0 cannot directly read a Fat32 partition)
- Batch options can be saved in a .BWZ file
- option Display icon in taskbar when working.
- option Automatically show WinImage when user input is needed.
- Toolbar buttons are modernized
- There is now only a Win32 version of WinImage. Users of Windows 3.1 need install Win32s 1.30 to use WinImage.

And, in the professiona! version :

- Self extractor with unlimited redistribution license
- You can export the directory of the current image in text or HTML.
- Printing of the directory of the image
- Edit boot sector properties (ie load another boot sector file, edit text in the boot sector...)
- Supports the creation of large images of removable and hard disks under Windows NT and Windows 95. Large images (> 2.88 MB) are not loaded in memory, read and write operations are done directly in image files

### September 1996 : Version 3.00

- Added ZIP compatible compressed image file (.IMZ and .WLZ)
- Added a comment feature for compressed image files.
- Added drag and drop from WinImage to the Windows 95/Windows NT 4.0 Explorer for file extraction
- When you drag a file into WinImage without opening an image, WinImage will automatically display the "New" dialog box



- WinImage can copy MacIntosh 1.44 MB floppies, but will not view the files in the image.
- Under Windows NT, WinImage can build CD-ROM ISO compatible images.

### **April 1996 : Version 2.50**

- Support of the new ListView control and tabbed dialog boxes for settings under Windows NT 3.5x, Windows 95 and Win32s 1.30
- Open an ISO CD-ROM image in read-only.
- Fixed bug while formatting DMF under Windows 95

### **September 1995 : Version 2.20**

- Support for 32bit Win32s for the Intel version under Windows 3.1x.
- Format a blank disk without creating a new image.
- Fixed bug while formatting and writing DMF under Windows 95 and Windows NT 3.5x

### **June 1995: Version 2.10**

- Windows 95 compatibility
- Support of Microsoft DMF format - 1.68 Mb floppy

### **January 1994: Version 2.00**

- Added the Batch assistant.
- Show disk directory when reading.
- WinImage can be iconised when reading or writing a floppy.
- New toolbar.
- Image information.
- Title bar.
- Sound notification.
- Support for .DLL resources (for languages other than French or English).

### **September 1993: Version 1.11**

- Support of directory drag from Windows File Manager.

### **September 1993: Version 1.10**

main differences:

- Windows NT version: built for the released version of NT, drag and drop server runs correctly.
- Functions for deleting files in an image, changing format and defragmenting.
- You can drag an image file from WinImage to another application.
- Better usability: new menu, news option and confirmation dialog boxes, "Always on top" in system menu, last four files in File menu. Help on toolbar via button.
- Incremented filenames.
- Better support of comparing and option saving.

### **May 1993 : Version 1.0**

First version.

A WinImage SDK with functions to create an image, read/write it on file or floppy, inject/extract, etc., is planned. Please send me email if you think this project could be useful to you.

There is now only a 32 bit version of WinImage. Users of Windows 3.1 need to install Win32s 1.30 (downloadable at <ftp://ftp.microsoft.com/softlib/MSLFILES/PW1118.EXE>).

Background reading or writing disks using WINIMAGE.EXE will ABSOLUTELY NOT degrade application performance under Windows NT or Windows 95 (with the exception of operations with the DMF format under Windows 95). Note: in version 2.x, WINIMAGE.EXE was the 16 bit version and WINIMANT.EXE was the 32 bit. Now, WINIMAGE.EXE is the 32 bit version.

There are Intel 80x86 and DEC Alpha versions of WinImage NT. I'm interested in receiving feedback from users of the RISC version.

There are English, French, German, Italian, Portuguese, Brazilian, Dutch and Spanish versions of WinImage. If you would like to provide translations of WinImage or the documentation in another language, please contact me.

WINIMAGE.EXE uses WIM16T95.DLL and WIM32T95.DLL under Windows 95, and WIM1632S.DLL under Windows 3.1x + Win32s 1.30. The file HLR20A16.EXE, distributed in some old beta releases, is no longer used.

If you find WinImage useful, give it to your friends and upload it to your BBS.

## Acknowledgements

Building user-friendly software requires the help of a lot of people.

The DOS utilities FdFormat and Wimage from *Christoph H. Hochstätter* gave me some great ideas. Without his source code, I couldn't format large format floppies.

By creating new icons and bitmaps, *François Liger* gave WinImage a better look. By giving me pieces of code, François saved a lot of my time.

By correcting the French documentation, *Monique Vollant* improved it's syntax. *François Liger, Joël Demay, Michael Segall, Peter Sohn, Matthew Gardiner, Ray Kaliss* and *Francis Weil* assisted in the same way with the English documentation. *Kent Cedola, Mickey Lane* and *Mary Geddry* built the Dec Alpha and Mips R4000 Windows NT version.

Some ideas and tests have been coming from beta-testers. My thanks to *David Chemla, Thierry Halin, Ralph Burri, Sylvain Surcin, Amando Senra, Augustin Garcia, Badara Dafe* and particularly *Fabrice Letard, Joël Demay, Michel Nedelec* and *Luc Coiffier*.

*Patrick Rafamantanantsoa, Bernard Maudry, Nico Mak, Serge Delbono* and *Michael Segall* suggested additional ideas for WinImage.

I'm using the ZLib library (<http://quest.jpl.nasa.gov/zlib/>) written by *Jean-loup Gailly* and *Mark Adler*, for compression support. I want to thank them a lot !

## Where to find WinImage

You can find the latest version of WinImage :

- On the WinImage web site, <http://www.winimage.com>
- On the French BBS at (33-1) 49.60.10.70 (login and password : WinImage)

You will find these files : (xx is the version number, for example, WINIMA50.ZIP is a ZIP for version 5.00) :

- WINIMAx.x.ZIP : English help and executable files for Windows 95/NT Intel and Windows 3.1 + Win32s 1.30 (win32)
- WIMA1630.ZIP : English help and executable files for Windows 3.1 (Win16). The 3.00 is definitely the last Win16 version
- WIMAXPxx.ZIP : English help and executable files for Windows NT Dec Alpha
- WIMAMPxx.ZIP : English help and executable files for Windows NT Mips R4000
- WIMAPPxx.ZIP : English help and executable files for Windows NT PowerPC
  
- WIMAFRxx.ZIP : French help and resource files.
- WIMADExx.ZIP : German help and resource files.
- WIMAESxx.ZIP : Spain help and resource files.
- WIMAITxx.ZIP : Italian help and resource files.
- WIMAPTxx.ZIP : Portuguese help and resource files.
- WIMABRxx.ZIP : Brazilian help and resource files.

For example, a French user of WinImage 5.0 under Windows 95 will download WINIMA50.ZIP and WIMAFR50.ZIP and unzip them in the same directory.

## Registering

WinImage is a shareware product, you may copy, distribute, and try it, but if you use it after the evaluation period, you must register. When you register you will receive a license, registration code, and the latest release of WinImage.

When you register WinImage, you will receive a unique registration number. You should install that number into WinImage by selecting Registering in the Option menu, and enter the code when prompted.

Once registered, WinImage will then allow you to hide the first screen in the Preference (Option menu).

If possible, check the web page <http://www.winimage.com/order.htm> Internet page before registering. You'll have up-to-date registering information (foreign reseller...). This page contains also link to internet secure server with credit card payment. This is the fastest and easiest way to order WinImage !

The price of WinImage standard is **\$30.00 (US)** or **27.50 Euro**.

The price for an upgrade from WinImage standard (or a version of WinImage previous 4.0) to WinImage professional is **\$30.00 (US)** or **27.50 Euro**. I'll check if you are in my registered user database when you order upgrade.

The price for WinImage professional, full version, is **\$60.00 (US)** or **55.00 Euro**.

The price of WinImage Developer Edition, with WinImage Professional and WinImage SDK is **\$200.00 (US)**.

The price for an upgrade from WinImage professional to WinImage Developer Edition is **\$150.00 (US)**. I'll check if you are in my registered user database when you order upgrade.

Of course, before accepting an upgrade, I'll check on my registered user database. If you can, I suggest you contact me by email before buying the upgrade.

**Contact me for site licence pricing.** This is a very advantageous option !!

You can send check in Euro or French francs (french bank) or US dollars to (USA bank) to:

Gilles Vollant  
4, rue de Morsang  
91600 Savigny sur Orge  
France

Fax : (33) (1) 69 05 85 54

Fax : (33) (1) 64 99 94 55

E-mail : [info@winimage.com](mailto:info@winimage.com)

If possible, send an email when you send a letter or a fax for ordering.

If you send Eurocheque, be sure to write the amount in French francs.

If you can, I suggest you send me an email when you register by any method.

**Credit Card Ordering:**

You can order by credit card through PsL, a credit card order service, by fax or phone (and of course by Web, from <http://www.winimage.com/order.htm>). The Web site contain also other ordering services.

Or you can FAX your order to PsL at 713-524-6398.

Or you can email your order to PsL at [30187@pslweb.com](mailto:30187@pslweb.com) .

These numbers are for ORDERS ONLY. For tech support or to check on the status of the shipping of an order or information about our products, please contact Gilles Vollant at [info@winimage.com](mailto:info@winimage.com). But but before sending email, check the FAQ at this internet Web address : <http://www.winimage.com/faq.htm>.

The WinImage number on the PsL registration service is #30187.

Use these numbers only for Credit Card orders.

This software is produced by a member of the Association of Shareware Professionals (ASP). ASP wants to make sure that the shareware principle works for you. If you are unable to resolve a shareware-related problem with an ASP member by contacting the member directly, ASP may be able to help. The ASP Ombudsman can help you resolve a dispute or problem with an ASP member, but does not provide technical support for members' products. Please write to the ASP Ombudsman at 545 Grover Road, Muskegon, MI 49442-9427 USA, FAX 616-788-2765 or send a CompuServe message via CompuServe Mail to ASP Ombudsman 70007,3536.

**Japanese** customers may contact P&A Shareware Co. You can visit web page at <http://www.panda.co.jp> and <http://www.pandasw.com>

P. & A. Inc.

No.3 Hoko Bldg. 6F

2-29-13 Akebono, Tachikawa

Tokyo 190-0012

Japan

Tel: (042) 525-9501

Fax: (042) 525-9502

NiftyServe: GO SPANDA

Nifty Email: PAF02461

Internet: <http://www.panda.co.jp>

Email: [info@panda.co.jp](mailto:info@panda.co.jp)

Email: [sales@panda.co.jp](mailto:sales@panda.co.jp)

**Australian** user can contact :

Advanced Computer Products

85 McArthur Ave.(Cnr.Biggs St)

St.Albans,Victoria,Australia,3021

Phone: (61) 03 9364-1886

Fax: (61) 03 9367-3639

Email: [sales@acproducts.com.au](mailto:sales@acproducts.com.au)

Web page: <http://www.acproducts.com.au>

