

## Overview

*Revival* is an undelete and file-recovery program that can restore files that were not just sent to the Recycle Bin, but were actually deleted. It allows extraction of files from drives with damaged file systems, or where important information has been deleted. It's compatible with all FAT file systems, including FAT32 and NTFS file systems. Deleted files are shown with file name, size, date, extent of damage, and availability for recovery. *Revival* is easy to use and can not only recover data from clusters but can actually reassemble the original file.

The following are examples on what *Revival* can do.

1. *Revival* is a very easy and powerful **Undelete** program. You can undelete sub-directories and the files without undeleting parent-directory.
2. When you accidentally **quick formatted** your hard disk. *Revival* can recover your data.
3. If a virus has infected your hard disk, and you've lost all the information in the partition table, boot sector, FAT, the root directory, *Revival* can help recover the files after proper preparation.
4. For some reason (e.g. when Windows 95/98/NT is unstable), you formatted the hard disk and reinstalled Windows 95/98/NT. But you forgot to back up some necessary files before doing so, *Revival* can help you to recover those files easily, provided that they still remain somewhere on your hard disk.

There are many anti-virus programs and file system repair utilities but most of those programs cannot repair totally damaged disks. They'll just trace the partition table and the boot record and repair only partially damaged files and directories.

*Revival* can search data area on the entire disk and repair lost files or directories of the totally damaged file system, provided those data still remain somewhere on the disk.

## **Caution**

1. Do not install *Revival* on the drive with the file-system problems
2. Do not save files on the drive with the file-system problems. You must have **more than 2 drives** to save file(You can save into network, ZIP drive or any other writable drive).
4. *Revival* requires normal PARTITION TABLE and BOOT sector. This means that **if DOS or WINDOWS does not recognize the disk, *Revival* can not retrieve the lost files until the disk is properly prepared.**  
**You should know file system very well if the drive have to be repartitioned and formatted. And you should know exactly what *Revival* could do. I recommend that you will test with another good hard disk before working with the work drive.**
4. **When you change the name of a file or a directory, the changed name is not saved to the disk.** It only remains in memory. And when you exit program that name will disappear.
5. After searching disk, *Revival* analyzes directory names. If the name is searched, *Revival* uses it, otherwise *Revival* uses **cluster number** as its name.
6. *Revival* cannot recover files from a physically damaged hard disk.
7. Files that have been overwritten with new data cannot be successfully recovered.

## Usage

*Revival* uses an Explorer-like interface.

To repair lost or deleted files, just open the drive and find the files from "**Basic Root Dir**", "**Searched Root Dir**", "**Garbage Dir**", "**Total Dir**" and "**All Files(NTFS only)**". Then select and save them to another drive.

*Revival* does not allow you to save files into a work drive to prevent the chance of overwriting data on the drive.

If you want to undelete files that you deleted normally on FAT and FAT32 file system, turn off "**Search Disk**" option and open the drive.

In this case, you just can access "**Basic Root Dir**" but can not access "**Searched Root Dir**", "**Garbage Dir**", "**Total Dir**" and "**All Files(NTFS only)**".

If a drive has a NTFS file system or if you can not find the deleted files from "**Basic Root Dir**", open the drive with "**Search Disk**" option checked.

If a drive has a NTFS file system, you will find the deleted files from "**All Files(NTFS only)**".

If a drive has a FAT or FAT32 file system, you will find the deleted files from "**Searched Root Dir**", "**Garbage Dir**" or "**Total Dir**".

A normal file system repair program works on a damaged disk.

But, *Revival* just searches for lost files on a damaged disk, and helps to save them to another drive.

If DOS or WINDOWS does not recognize the disk, *Revival* can not retrieve the lost files until the disk is properly prepared.

If the disk was repartitioned or formatted, ensure the geometry to be the same.

Even a slight variation of cluster sizes can cause files unusable.

*Revival* supports TCP/IP network. It is possible to recover damaged drives remotely over a Local Area Network (LAN) as well as over the Internet. The addition of Revsvr.exe(Revival Server program) allows users with Internet access to scan and transfer recovered files from remote drives anywhere in the world.

In *Revival* 3.1, Dossrvr(DOS Server) using IPX/SPX network has been added. If you use Dossrvr, you can recover files from a system that Windows is not working. Dossrvr recognizes the file system itself. So, it works even though DOS cannot recognize the file system because the version of DOS is low. IPX/SPX network driver must be working before you run Dossrvr.

*Revival* requires a system running Windows 95/98 or NT 4.0.

Revsvr works on Windows 95/98/NT3.51 and NT4.0.

If the system needing file recovery is running NT 3.51, the drive must be moved to a working NT 4.0 system. Or you can use Revsvr and "**Open Network Drive**" if the system supports TCP/IP network.

## ***File menu commands***

The File menu offers the following commands:



### Open Drive

Opens the drive on which the recovery is to be done.  
When the scan drive option is checked (required for NTFS) the entire drive is scanned for files and directories.

### Open Network Drive

Opens a Network Drive on a machine running Revsrvr(Revival Server) or Dossrvr(DOS Server).  
You will be prompted for the Network Address and Password of the server. Once a connection to the server is established, the drive will scan as it would on a local machine.



### Save

Saves the selected files to a drive.  
You can save the recovered files to any writable drive.  
But you should not save the files to the damaged drive.

### Rename

Changes the name of the focused file.  
The changed name is not saved to the disk, and it only remains in memory.  
So when you exit *Revival*, it disappears.

### Open File Drive Save Clusters

Opens a .DRV file that was created using Save Clusters.  
Saves selected physical clusters on a scanned drive. The result is a .DRV file that is an exact duplicate of the selected clusters.



### Preference

Selects "**Directory Option**".

## Edit menu commands

The Edit menu offers the following commands:



Basic Root Dir

Displays **Original Root Directory** tree.  
The basic root is the current directory structure without scanned directories.



Searched Root Dir

Displays **Searched Root Directory**.  
The scanned root under FAT file systems contains all of the root directories.



Garbage Dir

Displays **Garbage Directory**.  
The garbage directory contains deleted directories and their contents.  
**ALWAYS CHECK THE GARBAGE DIRECTORY on FAT systems.**



Total Dir

Displays **Total Directory**.  
This list includes all directories that are found by "**Scan Disk**".



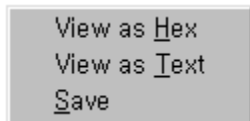
All Files(NTFS only)

Displays **All Files(NTFS only)**.  
This list includes all files that are found by "**Scan Disk**".  
To view scanned files under NTFS click the All Files button, a list of all files on the drive will be displayed.

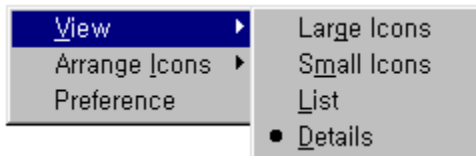
## Mouse Menu

If you press the right mouse button on a file name, you can view the file by built\_in hex or text viewer.

If you press right mouse button on a directory name, nothing happens.  
This helps you check whether the file is valid before saving the file.



If you press right mouse button when not on a file name, you can select options.



If you double click the left mouse button on a file name, you can perform an action on a file.  
The file can be an executable file or a document.

In this case, Revival **copies** the selected file to **tmp** directory that is assigned at **autoexec.bat**.

When you exit the program, Revival does not delete saved files. You must delete the files yourself.

## Icons



### Original Root Directory



### Normal Directory

(Sub Directory of Original Root Directory)

---



### Garbage Root Directory

(Scanned Root Directory that does not exist at Original Root Directory)



### Garbage Directory

(Garbage Directory that is found by Scan Disk.  
This is in case the original directory name can not be found.  
Displayed as #cluster-number)



### Renamed Garbage Directory

(When you change Garbage Directory name(#cluster-name),  
it is marked as Renamed Garbage Directory)



### Analyzed Garbage Directory

(Garbage Directory that is found by Scan Disk.  
This is in case the original directory name can be found)

---



### File

(All FATs for a file are valid)



### Error File

(All FATs for a file are invalid)



### Warning File

(Some FATs for a file are valid and some are invalid - this is error file, but if one of FAT is not damaged, you can repair the file)



### Deleted File

(When the file does **not** have **contiguous** FAT chain of free entries. this is a file that can be **undeleted**)



### Recoverable File

(**Deleted File** - when the file has **continuous** free FAT chain  
this is a file that can be **undeleted**)



### Saved File



## **Open Drive (File menu)**

Use this command to open a drive.

Only **Floppy, Hard drive and ramdrive** are listed, and you can not open **network-drive** or **CD-ROM drive**.

If "**Search Disk**" is selected then *Revival* scans the data area of disk and searches for lost data.

If your disk get corrupted such as by **virus** or **format** you must select "**Search Disk**" Option.

Otherwise *Revival* does not scan the data area of disk and only searches for root directory.

On FAT and FAT32 file system, If you want to undelete files that you deleted normally,

*Revival* will not need to do a sector by sector scan of the drive.

In this case, open the disk without "Search Disk" Option.

"**Skip Cluster**" let you input clusters to skip when *Revival* scans the disk.

This enables you skip bad clusters.

And you can scan the disk partially.





## ***Save (File menu)***

Use this command to save the selected files.

You can save the recovered files to any writable drive.

But you should not save the files to the damaged drive.

If the selected item is a directory, a new directory is created. But files in sub directories are not saved.

Normally, FAT file system has two FAT tables, FAT1 and FAT2.

FAT2 is a just backup of FAT1. So they have same contents.

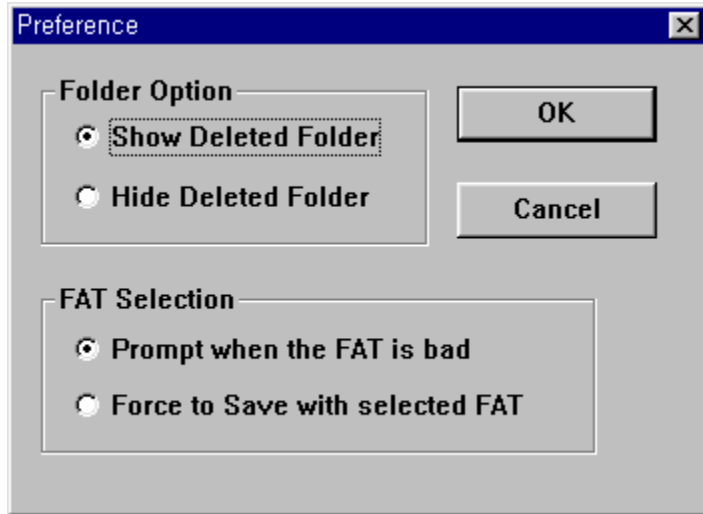
But when one of the tables is corrupted, you should use the better one.

And if both of them are corrupted, you should use No FAT.



## **Preference (File menu)**

Use this command to select "Directory Option" and "FAT Selection".



If you select "Show Deleted Dir", you can work on deleted files and directories.  
If you select "Hide Deleted Dir", deleted files and directories will not appear.  
Deleted files and directory names start with "#". You can change the name as you wish.

"FAT Selection" : You can select "Prompt when the FAT is bad" or "Force to Save with selected FAT" when you save files.

## **Text Viewer**

You can view files in text.  
It shows the actual text of the document.  
File size is limited to 32768 bytes.  
If file size is greater than 32768 bytes,  
you can see first 32768 bytes.

## **Hex Viewer**

You can view files in hex.

You can check whether a binary file(eg. Picture, Sound, ...) is valid before saving it.

File size is not limited. You can see all of the file.

## **How to Register**

You may not remove any copyright or other proprietary notice from the software. You may not reverse engineer, decompile, or disassemble the software.

This shareware software may be freely distributed, provided that no money is charged to the person receiving the software, beyond reasonable cost of packaging and other overhead.

### **1. Credit Card**

setSystems accepts several different payment methods. Payments made to setSystems with a credit card will appear on your statement based on your bank's payment cycle and will appear on your statement as originating from setSystems.

You may order by credit card in any of the following ways.

1. On the Internet: <https://www.setsystems.com/cgi-bin/buy-revival>

You can order with a Visa, MasterCard, American Express, or Discover card over the World Wide Web using a secured form. All information sent this way is encrypted using SSL technology for your protection. This is the fastest way to order. You will know within two minutes whether the order was approved.

2. Telephone:  
U.S. (toll-free): 1-888-201-7131  
International: 1-801-943-7848

The toll-free phone line is open from 11:00 a.m. to 9:00 p.m. (Eastern time), Monday through Saturday. Outside of those hours, you may leave a message and a customer service representative will contact you the next business day. If you are calling from North America, leave your name and a phone number, and your call will be returned. If you are calling from outside of North America, leave your name and E-Mail address, and someone will respond by e-mail to your message.

Please have all information requested by the order form available so that we may expedite your order. See the registration form below. Orders placed by phone may take up to one business day to be processed.

3. FAX: 1-801-942-3396

When ordering by FAX, please provide the information requested on the \*\*\*order form\*\*\*. Orders placed by FAX may take up to one business day to be processed.

4. E-mail: [sales@setsystems.com](mailto:sales@setsystems.com)

When ordering by e-mail, please provide the information

requested on the \*\*\*order form\*\*\*. Orders placed by e-mail may take up to one business day to be processed.

## **Revival Order Form**

-----  
REVIVAL ORDER FORM -- for phone, fax, and e-mail orders  
-----

Your Name:

Billing Address (the address your credit card bill is sent to)

Street:

City:

State:

Zipcode:

Country:

Mailing Address (if different than billing address)

Street:

City:

State:

Zipcode:

Country:

Home Phone Number:

Work Phone Number:

E-mail Address:

Credit Card Information

Type (Visa, Mastercard, American Express, Discover)

Account Number:

Expiration Date:

Software to Order

Title: Revival

Quantity:

Total Dollar Amount:

If FAXed or e-mailed, please include the following language (and sign if FAXed):

I authorize setSystems(TM) to bill my credit card and agree to pay the total amount according to card issuer agreement.

\_\_\_\_\_  
Signature

\_\_\_\_\_  
Date

-----

## **Contact Me**

You may download *Revival* from the following sources:

*Internet WWW*

<http://www.revival2000.com>  
<http://user.chollian.net/~ship3>

If you have any comments or concerns about *Revival* please contact me by email.

*E-mail*

[ship3@chollian.net](mailto:ship3@chollian.net)



