

# Matrox PowerDesk


·èÒ¹κÇÃã«Í;μιάÇÀì Matrox PowerDesk à¾×èíã«»ÃÐâÂ¹ì·Ò;îÒÀì  
´áÇÃì;ÃÒ;Ô;Ëì Matrox çÍ§·èÒ¹ãËéä´éÁÒ;·ÕèËØ´  
áÃÐà¾×èí·Õè·Ðã«éæØ³ËÁºÑμÔà¾ÔèÁàμÔÁ·Õèà;ÕèÂÇ;Ñº;ÔÃáË  
´§ÀÒ¾çÍ§ Matrox ä´é

·èÒ¹ËÒÁÒÃ¶¾ºκØ³ËÁºÑμÔμèÒ§æ ÁÒ;ÁÒÂçÍ§ Matrox PowerDesk  
´éÇÃãº·κØ³ËÁºÑμÔº·κØ³ËÁºÑμÔàËËèÒ¹ÕéÁÕÍÁÙèã¹;Ãèí§ä´ÍÐÁì;  
**Display Properties** çÍ§ Windows à¾×èí·Õè·Ðã«éæº·κØ³ËÁºÑμÔçÍ§  
Matrox PowerDesk ãËé·Ó´Ñ§μèíã»¹Õé

n ã¹ Windows 95 ãËé·èÒ¹κÃÔ;»ØèÁàÁÒÈìçÇÒ·Õè¾×é¹ËÃÑ§çÍ§à  
´Ëì·çí»çÍ§ Windows áÁéÇκÃÔ; **Properties**

n ã¹ Windows 98/2000 ãËé·èÒ¹κÃÔ;»ØèÁàÁÒÈìçÇÒ·Õè¾×é¹ËÃÑ§  
çÍ§à´Ëì·çí»çÍ§ Windows áÁéÇκÃÔ; **Properties** à **Settings** à  
**Advanced** ¶éÒ·èÒ¹;ÓÃÑ§ã«éà´Ëì·çí»áººËÁÒÂº´áË´§ÀÒ¾  
ãËéàÃ×í;îÔÃáË´§ÀÒ¾áººË¹Õè§;èí¹·Õè·ÐκÃÔ; **Advanced**

·èÒ¹ÃÑ§ËÒÁÒÃ¶ã«éæκØ³ËÁºÑμÔμèÒ§æ çÍ§ Matrox PowerDesk ä´é  
´éÇÃ Matrox QuickDesk κØ³ËÁºÑμÔºÒ§»ÃÐ;ÒÃçÍ§ PowerDesk  
¹Ñé¹·ÐàçéÒ¶Ï§ä´é´éÇÃ QuickDesk à·èÒ¹Ñé¹

ËÒËÃÑºçéíÁÙÀà¾ÔèÁàμÔÁà;ÕèÂÇ;Ñº«Í;μιάÇÀì Matrox PowerDesk  
ãËé´Ùà¹×éíËÒ·ÕèàËÃ×íçÍ§κÙèÃ×í¹Õé áÃÐ´Ùä  
´é·Ò;ÇÒ, Õã«éã¹à¹×éíàÃ×éí§ à¾×èí·Õè·Ðã  
´éÃÑºÇÒ, Õã«éã¹à¹×éíàÃ×éí§ ãËéκÃÔ; º¹á¶ºº×éí;Ãèí§ä  
´ÍÐÁì; áÁéÇκÃÔ;ÃÒÃ;ÒÃ·Õè·èÒ¹μéí§;ÒÃκÇÒÁ«èÇÃàËÃ×í  
ãËéκÃÔ;»ØèÁàÁÒÈìçÇÒ·ÕèËÑÇ  
çéíÇÒ, Õã«éà¾×éíãËéàÁ¹Ù»éíºíÑ¾»ÃÒ;´çÖé¹  
áÃÐ·èÒ¹ËÒÁÒÃ¶ËÑè§¾ÔÁ¾ìËÃ×íκÑ´Áì;ÇÒ, Õã«é¹Ñé¹ä´é  
´Ùà¾ÔèÁàμÔÁ...

Ø [à´Ëì·çí»áººËÁÒÂº´áË´§¾Ã](#)

Ø [Matrox QuickDesk](#)

# ¡ÒÃãªéàí;ÊÒÃ¹Õé

κÙèÁ×Í¹Õé¨Ð¶×ÍÇèÒ·èÒ¹ÁÕκÇÒÁκØé¹àκÂ;Ñº;ÒÃ·ÓςÒ¹  
ϕÑé¹¾×é¹ºÒ¹ àªè¹ ;ÒÃκΑÔ; κΑÔ; ´έÇÂ»ØèÁϕÇÒ áΑÐκΑÔ;μÔ  
´;Ñ¹ÊÍςκÃÑέςáΑÐ¨Ð¶×ÍÇèÒ·èÒ¹ÁÕκÇÒÁκØé¹àκÂ;ÑºÃÐºº;ÒÃ·ÓςÒ¹  
¾×é¹ºÒ¹ϕÍς·èÒ¹ ¹í;¨Ò;¹ÕéáΑέÇ àí;ÊÒÃ¹Õé¨ÐãªéÃÙ»áºº  
´Ñςμèìà»¹Õé:

n **μÑÇĒ¹Ö** ãªéÊÓĒÑºϕείκÇÒÁ·Õè»ÃÒ; ®º¹¨ÍÀÒ¾ ĒÑÇ  
ϕείÃείÃáΑΔά¶ºĒÀÒÇÐ

n **μÑÇàí¹** ãªéÊÓĒÑºª×είά;έΑáΑÐ·Òςà´Ô¹ÊÒÃºº ¢×είÊÔèς¾ÔÁ¾ì  
άΑÐκÓĒÑ¾·ìãĒÀè

n **μÑÇàí¹Ē¹Ö** ãªéà¾×είà¹é¹κÇÒÁĒÓκÑ

n »ØèÁμèÒς  
æº¹á»é¹¾ÔÁ¾ì¨ΔÍÁÙèã¹àκÃ×είςĒÁÒÁÇςàΑçºĒÕèàĒÃÕèÃÁ â  
´ÃÁÕàκÃ×είςĒÁÒÁºÇ;κÑè¹ÃĒĒÇèÒς»ØèÁ·Õè·èÒ¹μείς; ¾ÃείÁ;Ñ¹  
μÑÇÍÃèÒςàªè¹: ;´»ØèÁ [Ctrl]+[Alt]+[Del] ÊÍςκÃÑέςà¾×είà»Ô  
´κÍÁ¾ÔÇàμÍÃìãĒÀè

n ãªéàκÃ×είςĒÁÒÁÃÙ;Ē (à) à¾×είάÂ;ϕÑé¹μí¹;ÒÃ·ÓςÒ¹·Õèä  
´éÃÑº;ÒÃ¨Ñ´ΑÓ´ÑºäÇé μÑÇÍÃèÒςàªè¹ κΑÔ; **OK** à **Close** à **OK**  
«Õèς¨ΔÁÒ¼ÃàĒÃ×Í¹;Ñº κΑÔ; **OK**,¨Ò;¹Ñé¹κΑÔ; **Close** áΑÐκΑÔ;  
**OK**

n **ĒÕàϕĒÃÇ** ãªéÊÓĒÑºàí;ÊÒÃÍéÒςÍÔς ¶éÒ·èÒ¹;ÓÃÑς´Ùáººí¹ã¹ì  
ãĒéκΑÔ;ϕείκÇÒÁĒÕà  
ϕĒÃÇà¾×είà»ÃÑςĒÔèς·Õè¶Ù;ÍéÒς¶ÖςÍÃèÒςÃÇ´àÃÇÇ

<sup>1</sup>Õèκ×ίϕείÁÙÅÅÔϕÊÔ·,Ôì

»Ô´

αΑÔ;»ØèÁ<sup>1</sup>Õéà<sup>3/4</sup>xèí·Ó;ÒÃ»Ô´;ÅèÍsä´ÍÐÁíα

## Apply

αΑÔ;»ØèÁ<sup>1</sup>Õéà<sup>3</sup>/<sub>4</sub>×èíãËé;ÒÃà»ÃÕèÂ<sup>1</sup>á»ÅşçÍş·èÒ<sup>1</sup>ÁÕ<sup>1</sup>/<sub>4</sub>Å â  
´ÂäÁèµείş»Ô´;ÅèÍşä´ÍĐÁí;

## ÀàÀ;

«À;»ØèÁ<sup>1</sup>Õéà<sup>3/4</sup>×èí»Ô´;ÀèÍšä´ÍÐÁí;â´ÂäÁè·Ó;ÒÃà»ÀÕèÂ<sup>1</sup>á»Àšã´æ

**OK**

«ÅÔ;»ØèÁ<sup>1</sup>Õéà<sup>3</sup>/<sub>4</sub>×èíãËé;ÒÃà»ÅÕèÂ<sup>1</sup>á»ÅşçÍş·èÒ<sup>1</sup>ÁÕ<sup>1</sup>/<sub>4</sub>ÁáÅĐ»Ô  
´;ÅèÍšä´ÍĐÁí;

#<sup>1</sup>Õèκ×ίκΟί,ÔºÒÂçίς;Åèίςä´ίϢΑί;ËÃ×ίᶻÕ·κØ<sup>3</sup>ÊÁºÑμÔ<sup>1</sup>Õέ



## Reset

αΑÔ;»ØèÁ<sup>1</sup>Õéà<sup>3</sup>/<sub>4</sub>xè<sup>1</sup>ÓαèÒ·Ñ´μÑέξàÃÔèÁμέ<sup>1</sup>;ÃÑ<sup>9</sup>αx<sup>1</sup>ÁÒ

**à;çººÑ¹·Ö;**

κÅÔ;»ØèÁ¹Õéà¾¼×èíºÑ¹·Ö; ; ÒÃà»ÅÕèÂ¹á»Åξ·Õè·Óã¹;ÅèÍä´ÍΔÁ;

**11.1**

$\frac{1}{2} + \frac{1}{3} = \frac{3}{6} + \frac{2}{6} = \frac{5}{6}$

**μεία»**


αΑÔı»ØèÁ<sup>1</sup>Õéà<sup>3</sup>/<sub>4</sub>×èí·ÓçÑé<sup>1</sup>μεία»

äÁèÁÕËÑÇçéíϣÒÁªèÇÂàËÅ×Í·Õèà;ÕèÂÇçéí§;ÑºÃÒÂ;ÒÃ¹Õé



# Matrox QuickDesk

~Éãé QuickDesk à¼xèlàçéÒŒÖšxØ³ÉÁºÑμÔçÍŒ Matrox PowerDesk  
 ÍÀèÒŒÇ´àÃÇç à¼xèl·Õè´ĐáÊ´šËÃ×l«èl¹ QuickDesk  
 ãÉãé;ÀèlšàÅ×l;º¹ Matrox PowerDesk **ÃÒÂ;ÒÃàÅ×l; &**

 à×èl QuickDesk ;ÓÃÑŒ·ÓŒÒ¹ äí×l¹çÍŒ QuickDesk ´Đ»ÃÒ;´  
 çÖé¹º¹áŒºŒÒ¹çÍŒ Windows ÇÒŒμŒÇºŒÕéäÇéº¹äí×l¹¹Õéà¼xèl  
 ´ÙÀÙ;àÀè¹áºº»èlºŒŒ³¼·Õè´ĐºŒ;ÇèÒ·èÒ¹;ÓÃÑŒšãéæèÒ´Œ´μŒéšà  
 ´Ê;ì·çl»ã´ÍÀÙèã¹ç³Đ¹Œé xÅÔ;äí×l¹¹Õéà¼xèl´ÙàÁ¹ÙçÍŒ QuickDesk  
 ·èÒ¹ÃŒŒÈÒÀÒŒŒŒ xÅÔ;μÔ´;Œ¹ÊlšxÃŒéŒ·Œèäí×l¹ QuickDesk à¼xèlà»Ò  
 ´;Àèlšä´lĐÁ; xØ³ÉÁºÑμÔ;ÒÃáÊ´šÀÒ³¼

**ÈÁÒÂàÈμØ:** ÆÒÂ;ÒÃàÁ¹ÙÈ¹ŒèŒÃÒÂ;ÒÃÈÃ×lÁÒ;;ÇèÒçÍŒ Matrox  
 QuickDesk lÒ´´ĐäÁè»ÃÒ;´ã¹ÃÒÂ;ÒÃÈÒÃºŒçÍŒxÙèÁ×lÀÀèÁ¹Œé  
 ÊÓÈÃŒºçéÍÁÙÀà;ŒèÀÇ;ŒºÃÒÂ;ÒÃàÁ¹Ù·ŒèäÁèÍÀÙèã¹ÃÒÂ;ÒÃÈÒÃºŒ  
 ãÉèxÅÔ;·ŒèÃÒÂ;ÒÃáÅĐ´ÙÇÒ, ŒãéÈÃ×lÍÓá¹Đ¹Ó·Œè»ÃÒ;´º¹È¹éÒ´l

´Ùà¼ŒèÀàμÔÁ...

∅ [Matrox PowerDesk](#)

## ÃÛ»áººà´Êì·çí»

àÅ×í;Ë¹èÇÃã¹àÁ¹Û¹Õéà¾¼×èìàçéÒä»ËÃ×ÍÇºÃÇÁáººµèÒ§æ çÍ§à  
´Êì·çí» áººçÍ§à´Êì·çí»Ë¹Öè§à»ç¹;ÒÃÃÇÁ;Ñ¹çÍ§;ÒÃµÔ  
´µÑés´´ÍÀÒ¾¼µèÒ§ æ ·Õè¶Û;ºÑ¹·Ö;äÇé ÃÇÁ¶Ö§æÇÒÁÃÐàÍÕÃ  
´áÃÐá¼è¹¼ËÃËÖ ¶éÒæØ³ãªéà´Êì·çí»ËÃÒÃ´´ÍÀÒ¾¼ áººçÍ§à  
´Êì·çí»ÃÇÁ·ÑésµÓáË¹è§·Õè¶Û;µéÍ§çÍ§´´ÍÀÒ¾¼áµèÃÐ´´Í¹ÇÔ¹â´ÇÊìà  
´Êì×·çí»

æÃÔ;ÃÒÃ;ÒÃàÁ¹Û¹Õéà¾¼×èì´ÛÃÒÃ;ÒÃ·Ò§àÅ×í;µèìä»¹Õé

n ÃÛ»áººà´Êì·çí»·Õèä´é;ÓË¹´äÇéáÃéç´´Ð¶Û;áÊ  
´§ÃÒÃ;ÒÃÍ;ÁÒµÒÃª×èì  
æÃÔ;ª×èìË¹Öè§à¾¼×èìà»ÃÕèÃ¹ä»·ÕèæèÒ´´Ñ´µÑésçÍ§ÃÛ»áºº¹Ñé¹

n æÃÔ; à¾¼ÕèÃ à¾¼×èìºÑ¹·Ö;æèÒ´´Ñ´µÑésà´Êì·çí»»Ñ´´ØºÑ¹  
çÍ§·èÒ¹äÇéã¹ÃÛ»áººà´Êì·çí»

n æÃÔ; ´´Ñ´ÃÐàºÕÃº à¾¼×èìµÑésª×èìãËÃè Åº ËÃ×Íà¾¼×èìãËËä´é  
çéÍÁÛÃà;ÕèÃÇ;ÑºÃÛ»áººà´Êì·çí»·ÕèºÑ¹·Ö;äÇé



## μΟάĒ¹èšĒ¹éΘμèΘς

àÀ×Í;ÃÒĀ;ÒÃàÁ¹Ù¹Õèà¾×èíºÑ¹·Ö;áĀĐ¹ÓμΟάĒ¹èšáĀĐç¹Ò  
´çÍšĒ¹éΘμèΘςâ»Ãá;ÃÁ;ÃÑº×¹ÁÒĒÓĒÑººÃÔàÇ³à´Ê;ì·çÍ»»Ñ¹·ØºÑ¹  
çÍš·èÒ¹

μΟάĒ¹èšáĀĐç¹Ò´çÍšĒ¹éΘμèΘς·ĐŦÙ;¹Ó;ÃÑº×¹ÁÒä´é;çμèìàÁ×èìä  
´éĀŦ;ÒÃºÑ¹·Ö;μΟάĒ¹èšáĀĐç¹Ò´¹Ñé¹äÇé;èì¹áĀéÇºØ´çéÍÁÙĀ  
çÍšĒ¹éΘμèΘς·Ŧèáμ;μèΘς;Ñ¹ä»·ĐŦÙ;ºÑ¹·Ö;äÇéĒÓĒÑººÃÔàÇ³à  
´Ê;ì·çÍ»áμèĀĐáºº çéÍÁÙĀ  
çÍšĒ¹éΘμèΘς¹Ŧé·ĐŦÙ;ºÑ¹·Ö;äÇé¹;çèÒ·èÒ¹·Đ»Ŧ´×ÍÁ¾ÔÇàμÍĀì à»Ŧ  
´×ÍÁ¾ÔÇàμÍĀìäĒĀè ĒĀ×ÍÍ;·Ŧ; WindowsÍÑμâ¹ĀÑμŦ --  
àÀ×Í;ÃÒĀ;ÒÃã¹àÁ¹Ù¹Õèà¾×èí;ŦĒ¹´μΟάĒ¹èšáĀĐç¹Ò  
´çÍšĒ¹éΘμèΘς·ŦèºÑ¹·Ö;äÇéã¹ĀĐĀĐàÇĀÒμèΘς æ áĀĐ  
´éÇĀĀŦĀ;ŦĀ·ŦèàÀ×Í; ·ÑéšμΟάĒ¹èšáĀĐç¹Ò  
´çÍšĒ¹éΘμèΘς·ĐŦÙ;àĀŦĀ;×¹ÁŦâ´ĀÍÑμâ¹ĀÑμŦàÁ×èì¾×é¹·Ŧèà  
´Ê;ì·çÍ»à»ĀŦèĀ¹á»Āšä» ¶éÒμéÍš;ŦĀ·Ñ¹ĀÙ»áºº×Ø³ĒĀºÑμŦ¹Ŧé  
ãĒé×ĀŦ;·Ŧè ×èŦ·Ñ¹μÑéš â´Ā(×èŦ·Ñ¹μÑéš  
·Đ·ŦςŦ¹à©¾ŦĐàÁ×èìàÀ×Í;ÍÑμâ¹ĀÑμŦ)

ÍÑμâ¹ĀÑμŦ -- àÀ×Í;ÃÒĀ;ÒÃã¹àÁ¹Ù¹Õèà¾×èí;ŦĒ¹´μΟάĒ¹èšáĀĐç¹Ò  
´çÍšĒ¹éΘμèΘς·ŦèºÑ¹·Ö;äÇéã¹ĀĐĀĐàÇĀÒμèΘς æ áĀĐ  
´éÇĀĀŦĀ;ŦĀ·ŦèàÀ×Í; ·ÑéšμΟάĒ¹èšáĀĐç¹Ò  
´çÍšĒ¹éΘμèΘς·ĐŦÙ;àĀŦĀ;×¹ÁŦâ´ĀÍÑμâ¹ĀÑμŦàÁ×èì¾×é¹·Ŧèà  
´Ê;ì·çÍ»à»ĀŦèĀ¹á»Āšä» ¶éÒμéÍš;ŦĀ·Ñ¹ĀÙ»áºº×Ø³ĒĀºÑμŦ¹Ŧé  
ãĒé×ĀŦ;·Ŧè ×èŦ·Ñ¹μÑéš â´Ā(×èŦ·Ñ¹μÑéš  
·Đ·ŦςŦ¹à©¾ŦĐàÁ×èìàÀ×Í;ÍÑμâ¹ĀÑμŦ)

ĒĀŦĀàĒμŦ: ¶éÒ·èÒ¹;ŦĀÑšãºèà´Ê;ì·çÍ»áººĒĀŦĀºØ´áĒ´š¼Ā  
áĀĐμΟάĒ¹èš·ĀŦςçÍš;ŦĀáĒ´šĀŦ¾ä´éà»ĀŦèĀ¹á»Āšä» ¾×é¹·Ŧèà  
´Ê;ì·çÍ»çÍš·èÒ¹·Đà»ĀŦèĀ¹ä»´éÇĀ

´Ùà¾ŦèĀàμŦĀ...

Ø ºĀŦàÇ³Ē¹éŦ·Í

Ø à´Ê;ì·çÍ»áººĒĀŦĀºØ´áĒ´š¼Ā

## äíαí¹à´Êì·çí»

àÅ×í;ÃÒÂ;ÒÃàÁ¹Ù¹Õéà¾¼×èí°Ñ¹·Ö;áÅÐ¹ÓμÓáË¹è§çÍšäíαí¹à´Êì·çí»;  
ÏÑº×¹ÁÒËÓËÑººÃÔàÇ³à´Êì·çí»»Ñ´´ØºÑ¹çÍš·èÒ¹

μÓáË¹è§çÍšäíαí¹´ÐËÒÁÒÃ¶¹Ó;ÏÑº×¹ÁÒä´έ;çμèíàÁ×èíä´έºÑ¹·Ö;  
μÓáË¹è§¹Ñé¹äÇέ;èí¹áÅÇ æØ´çέíÁÙÅ çÍšäíαí¹·Öèáμ;μèÒ§;Ñ¹ä»´Ð¶Ù;ºÑ¹·Ö;äÇέËÓËÑººÃÔàÇ³à´Êì·çí»  
áμèÅÐáºº

n **ÍÑμá¹ÁÑμÔ** -- àÅ×í;ÃÒÂ;ÒÃàÁ¹Ù¹Õéà¾¼×èíäËÉ Matrox  
PowerDesk ºÑ¹·Ö;áÅÐàÃÔÃ;ãæέμÓáË¹è§äíαí¹â´ÁÍÑμá¹ÁÑμÔàÁ×èí¾¼×é¹·Õèà´Êì·çí»çÍšæØ³à»ÃÔèÁ¹á»Åšä»

n **·ÓãËéàËÇ¹ä´έ·Ñέ§ËÁ´** --  
àÅ×í;ÃÒÂ;ÒÃàÁ¹Ù¹Õéà¾¼×èíàÅ×èí¹äíαí¹à´Êì·çí»·ÖèíÁÙèí;´ÍÁÒ¾¼ÁÒäÇέº¹¾¼×é¹·Õèà´Êì·çí»º¹´ÍÁÒ¾¼

**ËÁÒÂàËμØ:** ¶έÒ·èÒ¹;ÓÃÑšãæà´Êì·çí»áººËÁÒÂæØ´άË´§¹¼Å  
áÅÐμÓáË¹è§´ÃÔ§çÍš;ÒÃáË´§ÁÒ¾¼ä´έà»ÃÔèÁ¹á»Åšä»¾¼×é¹·Õèà´Êì·çí»  
çÍš·èÒ¹´Ðà»ÃÔèÁ¹ä»´έÇÂ

**ËÁÒÂàËμØ:** ¶έÒμεί§;ÒÃãæææØ³ËÁºÑμÔàËÁèÒ¹Õé μεί§á¹èã´ÇèÒæØ³ËÁºÑμÔäíαí¹´Ñ´àÃÔÃ§ à´Ñ´àÃÔÃ§ÍÑμá¹ÁÑμÔ çÍš Windows  
äÁè·Ó§Ò¹ ¶έÒμεί§;ÒÃàçέÒ¶Ö§;ÒÃ´Ñ´μÑέ§¹Õé äËéãæé»ØèÁçÇÒº¹àÁÒËìæÁÒ;·Öè¾¼×é¹ËÃÑ§à´Êì·çí» Windows çÍšæØ³

´Ùà¾¼ÔèÁàμÔÁ...

Ø ºÃÔàÇ³Ë¹έÒ´Í

Ø à´Êì·çí»áººËÁÒÂæØ´άË´§¹¼Å

‘Ù;èí¹;ÒÃáÊ´şçÍşà´Ê;ì·çí»

¹Öèxí ¾ÃÕÇÔÇáÊ´şãËéàËç¹¶Öş;ÒÃ”Ñ´àÃÕÂşäíxí¹ â  
´Âã²é;ÒÃµÑés·ÖèàÅxí;ã¹»Ñ””ØºÑ¹

**snap äíı¹à¾×èİĒĒàĒÉ¹ııİ;Ń¹à»ç¹ııÖĀÖş**

ãªé;Āèİş;Òàıı×èİşĒĀÖĀ¹Öéà¾×èİııŃııĀÜ»áºı;ÖĀııŃıı  
ııŃéşàĒÉ¹ııİ;Ń¹à»ç¹ııÖĀÖşĒÖĒııŃııªäíııàııĒııçıı» à»Ôıı;ÖĀııÖşÖ¹  
çııİş;Āèİş;Òàıı×èİşĒĀÖĀà¾×èİĒĒäíıı¹º¹àııĒııçıı»áııèĀĐäíııııŃıı  
ıı¹çııà»çııĀÜ»ĒÖèàĒĀÖèĀĀııŃııııŃııĒĒĒııııİĒÖèàĒĀÖèĀĀıı¼×ıı¼éÖãııııÖ  
ĀÖşáııĀııŃııâııĀııııÖ àıı×èİııŃııçııàıı×èİııà¾×èİıı»ĀııŃııçııÖ  
ııçııİşııÖĀÖşĒÖèàĒĀÖèĀĀııŃııııŃııĒĒĒııııİĒÖèàĒĀÖèĀĀıı¼×ıı¼éÖáııèĀĐıı  
ııÖĀÖş

άΈ´şàĒé¹·Ōèμεί;Ń¹à»ç¹μŌĂŌşº¹à´Ējì·çí»

à»Ō´;ŌĂ·ŌşŌ¹çÍş;ĂèÍş;ŌàκĂ×èÍşĒÁŌĀ¹Ōéà¾×èÍμŌĂŌşçÍşäíı¹Ō¹à´Ējì·çí»

;ĂèÍş;ŌàκĂ×èÍşĒÁŌĀ¹Ōé´ĐäÁè·ŌşŌ¹ĒŌ;;ĂèÍş;ŌàκĂ×èÍşĒÁŌĀ **Snap**  
äíı¹à¾×èÍşĒÁŌĀ¹Ōé´μεί;Ń¹à»ç¹μŌĂŌş ¶Ū;ĂºĒĂ×ÍκŌ³ĒÁºŃμŌà´Ējì·çí»·Ōè;ŌĂŃşăºéşŌ¹ÍĀŪè à´Ūà»ç¹àÇçºà¾çÍş Window à»Ō´·ŌşŌ¹

## ã<sup>æ</sup>é;ÒÃ"Ñ´äíí¹·Õè customized

à»Ô´ã<sup>æ</sup>ésÒ¹;Åèí;ÒàκÃ×èí§ËÁÒÂ¹Õéà¾¼×èí;ÓË¹´;ÒÃ"Ñ´äíí¹µèÒ§ æ  
º¹à´Ê;ì·çí»çí§κØ³ κÅÔ;»ØèÁã´»ØèÁË¹Õè§ à¾¼×èíàÅ×í;ÃÙ»áºº;ÒÃ"Ñ´  
´äíí¹

¶éÒµéí;ÒÃã<sup>æ</sup>éÃÙ»áºº;ÒÃ"Ñ´äíí¹·ÕèàÅ×í; : (1) κÅÔ; **OK** ËÃ×í  
**Apply** (2) ã<sup>æ</sup>é»ØèÁçÇÒº¹àÁÒÊìκÅÔ;·Õè¾¼×é¹ËÃÑ§çí§à´Ê;ì·çí»  
Windows (3) κÅÔ;äíí¹"Ñ´àÃÕÂ§ ËÃÑ§"Ò;¹Ñé¹ (4) κÅÔ;æ×éí  
çí§µÑÇàÅ×í;ÒÃ"Ñ´ÁÓ´Ñº(æ×éí, æ¹Ô´, ç¹Ô´, ËÃ×íÇÑ¹·Õè)

**ËÁÒÂàËµØ:** ã¹;ÒÃã<sup>æ</sup>éκØ³ËÁºÑµÔ¹Õé  
µéí§á¹èã"ÇèÒκØ³ËÁºÑµÔäíí¹"Ñ´àÃÕÂ§ à "Ñ´àÃÕÂ§íÑµâ¹ÁÑµÔ  
çí§ Windows ¹Ñé¹»Ô´·Ó§Ò¹

**μμζò,»**

κΆÔ;ÃÒÂ;ÒÃàÁ¹Ù¹Õέà¼×èĩĚä´έçείÁÙÅ·Õèà;ÕèÂÇ;Ñº Matrox  
PowerDesk à¼ÔèÁàμÔÁ

## ἄεξϑ³ἘΆ°Ἴμὸ᾿ἰάἘ´ῆΑὸ¾ἘΆὸἌ᾿ἰ

à»ὸ´;ὸἌ·ὀξὸ¹ϕἰς;Ἄεἰς;ὸὰἄ᾿×εἰςἘἌὸἌ¹Ὀέ  
Ἐὸ;ἄϑ³μείς;ὸἌἄἄεξϑ³ἘΆ°Ἴμὸ᾿ἰάἘ´ῆΑὸ¾ἘΆὸἌ᾿ἰά°¾ἰὸὰἘἘ  
Ἄ°ὰἄ᾿×εἰςἘἌὸἌἄ¹;Ἄεἰς;ὸὰἄ᾿×εἰςἘἌὸἌ¹ὈέἘὸ;ἄἌεμείς;ὸἌἄἘέξϑ³ἘἌ  
°Ἴμὸ᾿ἰἘἌἔὸ¹Ὀέ·ὀξὸ¹



°Ñ¹·Ö; / àÃÕÂ; µ×¹µÓáË¹èξµèÒξ æ çÍË¹éÒµèÒξàÁ×èlà»Ô´/»Ô  
´â»Ãá;ÃÁ

àÁ×εί; Æείξ; ÒàµÃ×είξËÁÒÂ¹Õéà»Ô´·ÓξÒ¹·Ñέξç¹Ò´άΑθµÓάË¹έξ  
çÍË¹éÒµèÒξâ»Ãá;ÃÁ´Ð¶Û; °Ñ¹·Ö; äÇέ

àÁ×είË¹éÒµèÒξàËÁèÒ¹Ñέ¹¶Û; »Ô  
´άΑθ´Ð¶Û; àÃÕÂ; ã²éãËÁèà¾×είlà»Ô´Ë¹éÒµèÒξàËÁèÒ¹Ñέ¹ÍÏ; µÃÑέξ

µØ³ÊÁ°ÑµÔ¹Õέ´ÐäÁè·ÓξÒ¹ËÒ; ã²éµØ³ÊÁ°ÑµÔ´ÍáÊ  
´ßΑÒ¾ËÁÒÂ´ÍäÁè·ÓξÒ¹

**à»Ô´Ë¹éÒμèÒ\$â»Ãá;ÃÃã¹"ÍáÊ´\$ÀÒ¾:**

àÁ×èí;Åèí\$;ÒàκÃ×èí\$ËÁÒÂ¹Õéà»Ô´.Ó\$Ò¹ Ë¹éÒμèÒ\$â»Ãá;ÃÃ"Ðà»Ô  
´Í;μÃ\$;ÅÒ\$çÍ\$"ÍáÊ´\$ÀÒ¾·ÕèàÅ×Í; áμè"ÐàÅ×Í;"ÍáÊ´\$ÀÒ¾ä  
´éà©¾ÒÐàÁ×èí"ÍáÊ´\$ÀÒ¾¹Ñé¹à»ç¹Ëèç¹Ë¹Ïè\$çÍ\$à´Ê;ì·çÍ»»Ñ"∅ºÑ¹

ËÒ;Ë¹éÒμèÒ\$â»Ãá;ÃÃÁÕç¹Ò´ãËè;çèÒºÃÔàç³áÊ´\$ÀÒ¾  
Ë¹éÒμèÒ\$"ÐäÁèä´éÃÑº¼Åã´æ"Ò;κ∅³ËÁºÑμÔ¹Ïé

κ∅³ËÁºÑμÔ¹Ïé"ÐäÁè·Ó\$Ò¹ËÒ;ã³éκ∅³ËÁºÑμÔ"ÍáÊ  
´\$ÀÒ¾ËÁÒÂ"ÍáÁè·Ó\$Ò¹

## ãé CenterPOPUP

àÁ×èí;Áèí;Òà×Ã×èíËÁÒÀ¹Õèà»Ô´·ÓŞÒ¹ áÁÐ×Ø³;ÓÁÑšãéà  
´Ê;ì·çí»áºáÉ´ş¼Áä´éËÁÒÀ¹ÁÒ¾¼ ;Áèíšá´ÍÐÁí;«ì«íáÁÐ;Áèíš  
çéí×ÇÒÁ¹Ðà»Ô´Í;µÃš;ÁÒŞçíş¹´ÍáÉ´şÁÒ¾¼Ë×ÍÉ¹éÒµèÒŞâ»Áá;ÃÁ â´Á  
çÖé¹ÍÁÙè;ÑºÇèÒµÑÇàÁ×í;ã´µèíà»¹Öé·Öè¶Ù;àÁ×í;

n **ã¹É¹éÒµèÒŞâ»Áá;ÃÁËÁÑ;** -- ÇÒş;Áèíšä  
´ÍÐÁí;«ì«íäÇéµÃš;ÁÒŞ¾¼×é¹·ÖèÉ¹éÒµèÒŞ  
çíşâ»Áá;ÃÁËÁÑ; (â»Áá;ÃÁËÁÑ; çíş;Áèíšá´ÍÐÁí;«ì«í×í  
â»Áá;ÃÁ·ÖèËÁéÒş;Áèíšá´ÍÐÁí;«ì)  
ËÒ;É¹éÒµèÒŞâ»Áá;ÃÁËÁÑ;çÁÒÁ;ÒÁáÉ´ş¼ÁáºÉÁÒÀ¹ÁÒ¾¼  
;Áèíšá´ÍÐÁí;«ì«íÍÒ´çÁÒÁ;ÒÁáÉ´ş¼ÁËÁÒÀ¹ÁÒ¾¼´éÇÁ àÁ×èíà»Ô  
´;Áèíšá´ÍÐÁí;«ì«í¹Ñé¹çÖé¹

n **ã¹´ÍáÉ´şÁÒ¾¼µÑÇºÖéçÍşàÁÒÊì** -- ÇÒş;Áèíšä  
´ÍÐÁí;«ì«íäÇéµÃš;ÁÒŞ¹´ÍáÉ´şÁÒ¾¼·ÖèµÑÇºÖéçÍşàÁÒÊìÍÁÙè³  
àÇÁÒ¹Ñé¹ (â´ÁäÀè×Ò¹ÓŞÇèÒÉ¹éÒµèÒŞâ»Áá;ÃÁËÁÑ;ÍÁÙèã¹´ÍáÉ  
´şÁÒ¾¼ã´)

n **ã¹´ÍáÉ´şÁÒ¾¼â»Áá;ÃÁËÁÑ;** -- ÇÒş;Áèíšä  
´ÍÐÁí;«ì«íäÇéµÃš;ÁÒŞ¹´ÍáÉ´şÁÒ¾¼·Öè»ÁÐ;Íä»´éÇÁÊèÇ¹·ÖèãË-  
è·ÖèËØ´çÍÉ¹éÒµèÒŞâ»Áá;ÃÁËÁÑ;

n **ã¹´ÍáÉ´şÁÒ¾¼** -- ÇÒş;Áèíšá´ÍÐÁí;«ì«íäÇéµÃš;ÁÒŞ¹´ÍáÉ  
´şÁÒ¾¼·ÖèàÁ×í; áµè¹ÐàÁ×í;´ÍáÉ´şÁÒ¾¼ä  
´éà©¾¼ÒÐàÁ×èíà»ç¹ÊèÇ¹É¹ÖèşçÍşà´Ê;ì·çí»»Ñ¹¹·ØºÑ¹à·èÒ¹Ñé¹

ËÒ;É¹éÒµèÒŞãËè;ÇèÒ¾¼×é¹·Öè´ÙÁÒ¾¼»Ñ¹¹·ØºÑ¹ (ÊèÇ¹  
çÍş¾¼×é¹·Öè´ÙÁÒ¾¼Ë×ÍºÁÒàÇ³áÉ´şÁÒ¾¼·ÖèÁÍşàËÇ¹)  
É¹éÒµèÒŞ¹Ñé¹¹·Ð¶Ù;¹ÓÁÒÇÒŞäÇé·ÖèÁÒÁº¹«éÒÁçÍş¾¼×é¹·Öè´ÙÁÒ¾¼  
;Áèíš;Òà×Ã×èíËÁÒÀ¹ÖéáÁÐµÑÇàÁ×í;çíş;Áèíš¹Ðãéä  
´éà©¾¼ÒÐã¹ÁÒÇÐ;ÒÁáÉ´ş¼ÁËÁÒÀ¹ÁÒ¾¼à·èÒ¹Ñé¹

×Ø³ÉÁºÑµÒ¹Öé¹¹·ÐäÁè·ÓŞÒ¹ËÒ;ãéé×Ø³ÉÁºÑµÒ¹´ÍáÉ  
´şÁÒ¾¼ËÁÒÀ¹´ÍáÁè·ÓŞÒ¹

## ËÁÒÀàËµØ:

×Ø³ÉÁºÑµÒ¹Öé¹¹·ÐÁÒ¾¼Áà©¾¼ÒÐËÁÑş¹Ò;×Ø³Áçíí¹ÉÙè Windows  
à·èÒ¹Ñé¹.

## ãé MaxVIEW (à©¾ØÐ DualHead)

à»Ô´;ÒÃ·ÓŞÒ¹çÍŞ;ÅèÍŞ;ÒàκÃ×èÍŞËÁÒÂ¹Õéà¾×èÍŞÇºκØÁÇÔ,ÕçÂÒÂ  
ç¹Ò´Ë¹éÒµèÒŞâ»Ãá;ÃÁ µÑÇÍÂèÒŞà²è¹ â»Ãá;ÃÁ´Ð¶Ï;çÂÒÂãËéãË-  
èËØ´ àÁ×èÍŞÅÔ;»ØèÁçÂÒÂç¹Ò´ ( □ ) ·ÕèÍÂÙèº¹á¶ºËÑÇçéÍ ÇÔ,Õ  
çÂÒÂç¹Ò´Ë¹éÒµèÒŞçÕé¹ÍÂÙè;ÑºµÑÇàÅ×Í;·Õèä´éàÅ×Í;äÇé

n **In the display containing the window --**

àÅ×Í;µÑÇàÅ×Í;¹ÕéËÒ;κØ³µéÍŞ;ÒÃçÂÒÂË¹éÒµèÒŞâ»Ãá;ÃÁã¹´ÍáË  
´ŞÀÒ¾·Õè»ÃÐ;Íº´éÇÂË¹éÒµèÒŞ·ÕèËèÇ¹ãËèçÂÒÂãËéáÁéÇ

n **ã¹´ÍáË´ŞÀÒ¾ --** àÅ×Í;µÑÇàÅ×Í;¹ÕéËÒ;κØ³µéÍŞ;ÒÃ  
çÂÒÂË¹éÒµèÒŞâ»Ãá;ÃÁã¹´ÍáË´ŞÀÒ¾·ÕèàÅ×Í;

ËÒ;ÅºàκÃ×èÍŞËÁÒÂã¹;ÅèÍŞ;ÒàκÃ×èÍŞËÁÒÂÍ; Ë¹éÒµèÒŞâ»Ãá;ÃÁ´Ð¶  
Ï;çÂÒÂãËéãËè¹àµçÁË¹éÒ´Í (Ë¹éÒµèÒŞ´Ð»ÃÒ;´çÕé¹ç³Ð·Õèä  
´éÃÑº;ÒÃçÂÒÂãËéãËèËØ´)

κØ³ËÁºÑµÒ¹Õé´ÐäÀè·ÓŞÒ¹ËÒ;ãéκØ³ËÁºÑµÒ´ÍáË  
´ŞÀÒ¾ËÁÒÂ´ÍäÀè·ÓŞÒ¹

**ËÁÒÂàËµØ:** κØ³ËÁºÑµÒ¹Õé´ÐËèŞ¼Åà©¾ØÐ;Ñº´ÍáË  
´ŞÀÒ¾ËÃÑ;áÃÐÁÍŞçÍŞá¼è¹ÇŞ´Ã;ÃÒ;Ô;Ë·ÕèË¹ÑºË¹Ø¹ DualHead  
à·èÒ¹Ñé¹ κØ³ËÁºÑµÒ¹Õé´ÐãéŞÒ¹ä´éà©¾ØÐàÅ×è´ÍáË  
´ŞÀÒ¾ËÁÒÂ´ÍçÍŞ DualHead à»Ô´·ÓŞÒ¹

´Ùà¾ÒèÀàµÒÁ...

Ø [´ÍÁÒ¾ËÁÒÂ´ÍçÍŞ DualHead](#)

## àÅ×Í; "ÍáÊ´\$ÀÒ¾

κÅÔ;»ØèÁ¹Õéà¾×èlàÅ×Í;"ÍáÊ´\$ÀÒ¾ â´ÀàÅ×Í;ä´éà©¾ØÐ"ÍáÊ´\$ÀÒ¾·Õèà»ç¹ÊèÇ¹Ë¹Õè\$çÍ\$à´Ê;ì·çÍ» Windows »Ñ""ØºÑ¹çÍ\$κØ³"Ó¹Ç¹"ÍáÊ´\$ÀÒ¾·ÕèàÅ×Í;ã¹»Ñ""ØºÑ¹"Ð»ÃÒ;¬¶Ñ´"Ò;»ØèÁ

κØ³ÊÁºÑµÔ¹Õé"ÐäÁè·Ó\$Ò¹ËÒ;ã²éκØ³ÊÁºÑµÔ"ÍáÊ´\$ÀÒ¾ËÁÒÃ"ÍäÁè·Ó\$Ò¹

μεία»<sup>1</sup>Õéà»ç<sup>1</sup>κΌί,Ô°ÒÂ¶ÖξκØ<sup>3</sup>ÊÁ°ÑμÔ·Õèä´éàÅ×ÍäÇέ

ÜÃÀ°

ꝤÅÔ;ÃÒÂ;ÒÃàÁ¹Ù¹Õéà¾¼×èì;ÓË¹´ËÃ×Íà»ÅÕèÂ¹á»Å§»ØèÁÃÑ  
´º¹á»é¹¾¼ÔÁ¾¼ìÊÓËÃÑºÃÙ»áººà´Êì·çí»áÅÐꝤØ³ÊÁºÑµÔϕÍ§ Matrox  
PowerDesk

## à»Ô´ Matrox DeskNav

⌘⌘;ÃÒÂ;ÒÃàÁ¹Ù¹Õéà¾¼×èlàÃÔèÁµé¹â»Ãá;ÃÁ Matrox DeskNav

´Ùà¾¼ÔèÁµÔÁ...

∅ [Matrox DeskNav](#)



## Matrox Áø´Ü ½ÃÀÛ

⌘ÅÔ;ÃÒÂ;ÒÃàÁ¹Ù¹Õéà¾¼×èlàÃÔèÁµé¹â»Ãá;ÃÁÇÔ¹Ô¨ ©ÑÂçÍ§ Matrox  
â»Ãá;ÃÁ¹ÕéÍÒ¨èÇÃãËé·èÒ¹ÃÐºØ»Ñ-  
ËÒºÒ§»ÃÐ;ÒÃ·Õèà;ÕèÂÇ;Ñº;ÒÃáÊ´§ÀÒ¾¼ä´é

## àÃÔèÁ Screen Saver

¸ÅÔ;ÃÒÂ;ÒÃàÁ¹Ù¹Õéà¾¼×èlàÃÔèÁµé¹ screen saver ¸Í§·èÒ¹·Ñ¹·Õ  
ÃÒÂ;ÒÃàÁ¹Ù¹Õé»ĐäÁè»ÃÒ;¬¶éÒä´éàÅ×Í; "(äÁèÁÕ)" ãµé **Screen  
Saver** ã¹¸èÒ¬Ñ´µÑés;ÒÃáÊ´§ÀÒ¾¼¸Í§ Windows ¸Í§·èÒ¹äÇé

άΈ´ξα0³ÊÁºÑμÔ

αΑÔ;ÃÒÂ;ÒÃàÁ¹Ù¹Õéà¾×èlà»Ô´;ÅèÍsä´ÍÐÁ; **Display Properties**

´Ùà¾ÔèÁμÔÁ...

∅ [Matrox PowerDesk](#)

## »Ô´ Matrox QuickDesk

κΆÔ;ÃÒÂ;ÒÃàÁ¹Ù¹Õéà¾¼×èÍ»Ô´ Matrox QuickDesk àÁ×èÍ»Ô´ QuickDesk ä»áÁέç äíκí¹çÍ§ QuickDesk ;ç¨ĐäÁè»ÃÒ;¹á¶º§Ò¹çÍ§ Windows ÍÕ;μèlä»

àÁ×èÍμεί§;ÒÃà»Ô´ Matrox QuickDesk çÖé¹ÍÕ;κÃÑές äËéà»Ô´ ´ã²έ§Ò¹;ΆèÍ§;ÒàκÃ×èÍ§ËÁÒÃ "áÊ´§äíκí¹ **Matrox QuickDesk** º¹á¶ºË¶ºÒ¹Đ" º¹²Õ·κØ³ÊÁºÑμÔ **ÃÒÂ;ÒÃàÁ×Í;**

**ËÁÒÃàËμØ:** ÊÓËÃÑºκØ³ÊÁºÑμÔºÒ§»ÃĐ;ÒÃçÍ§ Matrox PowerDesk ·èÒ¹ÊÒÁÒÃ¶ã²ää´έ¼èÒ¹·Ò§ Matrox QuickDesk à·èÒ¹Ñέ¹

´Ùà¾¼ÔèÁàμÔÁ...

∅ [Matrox PowerDesk](#)

±,¼°Ç¥,ñ·İ

<sup>1</sup>Õè¸×ÍÃÒÂ;ÒÃçÍŞÃÙ»áººà´Ê;çÍ»·ÕèÁÕÍÂÙèáÅéÇ

## ÓÇÁ;·ÕèÊØ´çÍšáºã¹àÁ¹Ù QuickDesk

ãªé;ÅèÍš¹Õéà¾×èÌÃÐºØ´´ÓÇ¹Á;·ÕèÊØ´çÍšáºà  
´Ê;·çÍ»·Õèº³µéÍ;ÒÃãËé»Ã;¹àÁ¹Ù QuickDesk

¶éÒÁÕáºÁ;ÇèÒ´´ÓÇ¹·ÕèàÅ×Í; º³ÊÒÁÒ¶ãªéàÁ¹Ù More  
Schemes çÍš QuickDesk à¾×èìàçéÒä»à¾ÒèÁáºº  
Ë;º³ÁÕáº´´ÓÇ¹Á;áÃÐàÅ×Í;´´ÓÇ¹Á;à;Ó¹ä» º×èìçÍšáº·ÑésËÁ  
´ã¹àÁ¹Ù QuickDesk ´ÐáÊ´šäÀè¾Í

Àì,şº-°æ

⌘ÅÔ;»ØèÁ<sup>1</sup>Õéà<sup>3/4</sup>×èíà»ÃÕèÂ<sup>1a</sup>×èíÃÙ»áººà´Êì·çí»·ÕèàÅ×íäÇé

Å°

κÅÔj»ØèÁ<sup>1</sup>Õéà<sup>3/4</sup>xèÍÅ°ÃÙ»á<sup>oo</sup>à´Êjì·çí»·ÕèàÅxÍjäÇé



## Apply

«ÅÔ;»ØèÁ<sup>1</sup>Õéà<sup>3/4</sup>×èíã<sup>æ</sup>éÃÙ»á<sup>ºº</sup>à´Êì·çí»·ÕèàÅ×Í;äÇé

±,¼°Ç¥ 1ì, ® °,±â

¹Õèκ×ί;ÒÃ·´Áίς´ÙÃÙ»áººà´Êì·çί»·ÕèàÅ×ί;äÇέ àÁ×èίμέίς;ÒÃ  
´ÙκΟί,ÔºÒÃÀÒÇΔάÊ´§ÀÒ¾ äĒéĀéÒĀμÑÇªÕέçίς·èÒ¹ä»àĒ¹×ί;ÒÃ·  
´Áίς´Ù¹Ñέ¹

## ±,¼°Ç¥¿Í ±â´É

¹Õè×ÍÃÒÂ;ÒÃçÍ\$ÃÙ»áººà´Ê;ì·çÍ»áÅÐ×Ø³ÊÁºÑµÔçÍ\$ Matrox  
PowerDesk ·èÒ¹ÊÒÁÒÃ¶;ÓË¹´»ØèÁÃÑ  
´º¹á»é¹³/₄ÔÁ³/₄ìÊÓËÑºÃÙ»áººáÅÐ×Ø³ÊÁºÑµÔàËÀèÒ¹Õéä´é

à³/₄×éì·Õè´Ð;ÓË¹´»ØèÁÃÑ´º¹á»é¹³/₄ÔÁ³/₄ì ãËèàÅ×Í;ÃÒÂ;ÒÃË¹Õè\$  
áÅéÇ×ÅÔ;ã¹;ÅèÍ\$á;éäç·Õè»ÃÒ;´çÕé¹  
;´á»é¹Ë¹Õè\$ËÃ×ÍËÀÒÂá»é¹³/₄ÃéÍ;Ñ¹ (àºè¹ [Ctrl]+[F10])  
´Ò;¹Ñé¹×ÅÔ; à;çººÑ¹·Õ;ì

## Ά°\_μα´ÜÃàΆ°

κΆÔ;ã¹;Άέí§¹Õέ áΆέÇ;´ά»é¹Ë¹Öè§ËÃ×íËÀÒÁá»é¹³⁄₄ÃέíÁ;Ñ¹  
(μÑÇíÁèÒ§à²è¹ [Ctrl]+[F10]) ¨Ò;¹Ñέ¹κΆÔ; à;çººÑ¹·Ö; à³⁄₄×èí;ÓË¹  
´»ØèÁÃÑ´º¹ά»é¹³⁄₄ÔÁ³⁄₄ìãËέ;ÑºÃÒÁ;ÒÃ·ÕèàΆ×í;äÇέ

"äÁèÁÕ" ¨Ð»ÃÒ;ã¹;Άέí§¹Õέ¶έÒäÁèä´έ;´»ØèÁÃÑ´º¹ά»é¹³⁄₄ÔÁ³⁄₄ìã  
´æ ËÃ×í¶έÒ»ØèÁÃÑ´º¹ά»é¹³⁄₄ÔÁ³⁄₄ì·Õè;´ä»¹Ñέ¹ã²éäÁèä´έ



# ÊÏ

---

ã<sup>æ</sup>é<sup>æ</sup>Õ· $\pi$ Ø<sup>3</sup>Ê<sup>º</sup>Ã<sup>º</sup>µ<sup>Ô</sup>¹Õé<sup>à</sup><sup>¾</sup>×è<sup>í</sup>:

n »Ã<sup>Ñ</sup><sup>º</sup> $\pi$ ÇÒÁÊÁ´Ø<sup>Å</sup>Ê<sup>Õ</sup>Í<sup>À</sup>è<sup>Ò</sup>§<sup>Å</sup>Ð<sup>à</sup>Í<sup>Õ</sup>Â´

n »Ã<sup>Ñ</sup><sup>º</sup>´Í<sup>À</sup>Ò<sup>¾</sup>ã<sup>Ë</sup>é<sup>à</sup>Ê<sup>À</sup>Ò<sup>Ð</sup>;<sup>Ñ</sup><sup>º</sup>á<sup>Ê</sup>§<sup>Ê</sup>Ç<sup>è</sup>è<sup>Ò</sup>§ µ<sup>Ò</sup>Á·<sup>Õ</sup>è<sup>µ</sup>Ñ<sup>é</sup>§<sup>ç</sup>Í<sup>§</sup>¸<sup>Í</sup>Á<sup>¾</sup>Ô<sup>Ç</sup>à<sup>µ</sup>Í<sup>Ã</sup>ì

n ´<sup>Ñ</sup>´Ê<sup>Õ</sup>Ê<sup>Ó</sup>Ê<sup>Ã</sup>Ñ<sup>º</sup>á<sup>Ê</sup>´§<sup>À</sup>Ò<sup>¾</sup>ã<sup>Ë</sup>é<sup>à</sup>Ê<sup>À</sup>Ò<sup>Ð</sup>;<sup>Ñ</sup><sup>º</sup>´Í<sup>À</sup>Ò<sup>¾</sup>Í<sup>×</sup>è<sup>¹</sup>æ

Ê<sup>Ó</sup>Ê<sup>Ã</sup>Ñ<sup>º</sup>ç<sup>é</sup>Í<sup>À</sup>Ù<sup>Å</sup>ã<sup>¹</sup>;<sup>Ò</sup>Ã<sup>ç</sup>º<sup>π</sup>Ø<sup>Á</sup>;<sup>Ã</sup>Ð´<sup>Ò</sup>É·<sup>Õ</sup>è<sup>Á</sup>Õ<sup>π</sup>Ø<sup>3</sup>Ê<sup>º</sup>Ã<sup>º</sup>µ<sup>Ô</sup>·<sup>Õ</sup>è;<sup>Ó</sup>Ë<sup>¹</sup>  
´<sup>ä</sup>Ç<sup>é</sup>á<sup>µ</sup>è<sup>Å</sup>Ð<sup>Í</sup>Ñ<sup>¹¹</sup>Õ<sup>é</sup> â»<sup>Ã</sup>´<sup>Ù</sup>·<sup>Õ</sup>è context-sensitive help

**Ê<sup>À</sup>Ò<sup>À</sup>Ê<sup>µ</sup>Ø:** È<sup>Ò</sup>;<sup>á</sup><sup>¼</sup>è<sup>¹</sup>Ç<sup>§</sup>´<sup>Ã</sup>;<sup>Ã</sup>Ò<sup>;</sup>Ô<sup>;</sup>Ê<sup>ì</sup> Matrox ç<sup>Í</sup>¸<sup>Ø</sup><sup>3</sup>Ê<sup>¹</sup>Ñ<sup>º</sup>Ê<sup>¹</sup>Ø<sup>¹</sup>  
DualHead <sup>Ã</sup>Ò<sup>À</sup>Å<sup>Ð</sup>à<sup>Í</sup>Õ<sup>Â</sup>´<sup>π</sup>Ø<sup>3</sup>Ê<sup>º</sup>Ã<sup>º</sup>µ<sup>Ô</sup>à<sup>Ë</sup>Å<sup>è</sup>Ò<sup>¹</sup>Õ<sup>é</sup>´<sup>Ð</sup>ä<sup>À</sup>è·<sup>Ó</sup>§<sup>Ò</sup><sup>¹º</sup>´<sup>Í</sup>á<sup>Ê</sup>  
´<sup>§</sup>À<sup>Ò</sup><sup>¾</sup>Ã<sup>Í</sup>ç<sup>Í</sup>¸<sup>Ø</sup><sup>3</sup> á<sup>Å</sup>Ð<sup>Í</sup>Ò´<sup>ä</sup>Á<sup>è</sup>·<sup>Ó</sup>§<sup>Ò</sup><sup>¹</sup>à<sup>Å</sup>Ê<sup>Ò</sup>;<sup>ã</sup><sup>æ</sup>é;<sup>Ñ</sup><sup>º</sup> Matrox PowerDesk  
<sup>º</sup>Ò<sup>§</sup>Ã<sup>Ø</sup>è<sup>¹</sup>

## ÇÃÃ³ĐÊÕ

ãªéµÑÇàÅ×èí<sup>11</sup>Õéà<sup>¾</sup>×èí»ÃÑºÇÃÃ³ĐÊÕçÍ§"ÍÀÒ<sup>¾</sup>çÍ§·èÒ<sup>1</sup>  
;ÒÃµÑéşãËéà»ç<sup>1</sup> "ÊÕ<sup>½</sup>èÒÃÃéí<sup>1</sup>" "Đ·ÓãËéÊÕà·Ò;ÅÒ§ Íí;ÊÕàËÅ×Í§-á  
'ş ÊèÇ<sup>1</sup> "ÊÕ<sup>½</sup>èÒÃàÃç<sup>1</sup>" "Đ·ÓãËéÊÕà·Ò;ÅÒ§Íí;ÊÕ<sup>1</sup>éÓàşÔ<sup>1</sup>

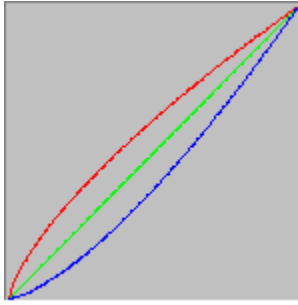
## ⌘ÇÒÁàçéÁ

àÅ×èí¹μÑÇàÅ×èí¹àËÀèÒ¹Õéà¾×èí¹à»ÅÕèÂ¹⌘ÇÒÁàçéÁ  
çÍşáÁèËÕ·ÑésËÒÁ·Õè··ÍÀÒ¾çÍş·èÒ¹ã²é (á´ş àçÕÂÇ áÅÐ¹éÓàşÒ¹)  
⌘ÇÒÁàçéÁçÍşËÕ¹ÕéÁÕ⌘ÇÒÁËÑÁ¾Ñ¹ ì;Ñº á;ÁÁèÒçÍşÁÑ¹ á;ÁÁèÒ  
ã¹;Ã³Õ¹Õé×Í;ÒÃÇÑ´⌘ÇÒÁËÑÁ¾Ñ¹ ì;ÅÐËÇèÒş⌘ÇÒÁ·éÒ  
çÍşËÕº¹··ÍÀÒ¾;Ñº··Ó¹Ç¹âÇÀ·ì·Õè×ÍÁ¾ÔÇàμÍÀìËèşä»ÃÑş··ÍÀÒ¾ËÓËÑ  
ºËÕ¹Ñé¹

à»Ô´ÀÒÇÐ;ÅèÍş à²×èí¹ÁËÕ à¾×èí¹ËËéμÑÇàÅ×èí¹ **ËÕá´ş, ËÕàçÕÂÇ**  
ËÃ×Í **ËÕ¹éÓàşÒ¹** ÍÀÙèã¹ÅÐ´Ñºà´ÕÂÇ;Ñ¹àÅ×èí¹·èÒ¹à»Ô  
´ÀÒÇÐ;ÅèÍş¹Õé áÁéÇàÅ×èí¹μÑÇàÅ×èí¹⌘ÇÒÁàçéÁ  
·èÒ¹··Ðà»ÅÕèÂ¹⌘ÇÒÁàçéÁ·ÑésËÁ´çÍş;ÒÃáË´şÀÒ¾



# άΈ´şÀÒ¾àÊé¹âæşÊÕ



ά¼ş¹ÕéάΈ´ş;ÃÒ;çÍşÊÕά´ş àçÕÀÇ άÅÐ ¹éÓàşÔ¹·Õè´´ÍÀÒ¾çÍş·èÒ¹ã²é  
ά¼ş¹ÕéάΈ´şãÊéàËç¹¶ÏşæèÒ·Õè·èÒ¹à»ÅÕèÅ¹á»Åşâ  
´Åã²éµÑÇàÅ×è¹**ÇÃ³ÐÊÕ** άÅÐæÇÒÁàçéÁ



## ÃÒÃ;ÒÃàÃ×Í;

---

ãªéªÕ·æØ³ÉÁºÑµÔ¹Õéà¾¼×èìà»Ô´áÃÐ»Ô´æØ³ÉÁºÑµÔµèÒ§æ  
áÃÐà¾¼×èìæÇºæØÁæèÒ;ÒÃ¨Ñ´µÑές;ÒÃάÊ´§ÀÒ¾¼çÍ§ä´ÃìàÇÍÃìάÊ  
´§ÀÒ¾¼çÍ§ Matrox çÍ§·èÒ¹

¶éÒ·èÒ¹ÃÕ»ÑËÒ;Ñº Windows ËÃ×Í;Ñºâ»Ãά;ÃÃã´â»Ãά;ÃÃË¹Öè§çÍ§  
Windows ·èÒ¹ÍÕ¨ÃÍ§à»ÃÕèÃ¹æèÒ¨Ñ´µÑές  
çÍ§;ÃèÍ§àÃ×Í;àËÃèÒ¹ÕéíÃèÒ§¹éíÃË¹Öè§;ÃèÍ§ (â  
´Ãà©¾¼ÒÐÍÃèÒ§ÃÕèς;Ñº;ÃèÍ§àÃ×Í;·Õèà;ÕèÃÇ;Ñº»ÃÐËÔ·,ÔÀÒ¾¼ã¹;  
ÒÃάÊ´§ÀÒ¾¼) ÊÏËÃÑº  
çéíÃÙÃà¾¼ÔèÃàµÔÃà;ÕèÃÇ;ÑºµÑÇæÇºæØÁάµèÃÐµÑÇ ãËé  
´ÙÇÔ,Õãªéã¹à¹×éíàÃ×èÍ§

## ãĒéÁŒçéíꝤÇŌÁá¹Đ¹Ō;è¹¹ŌĀŪ»áººà´Ē;ì·çí»ä»ãºé

à»Ō´;ŌĀ·ŌşŌ¹çíş;Āèíş;ŌàꝤĀ×èíşĒĀŌĀ¹Ōé ĒŌ;ꝤŌ³µéíş;ŌĀãĒé  
Matrox PowerDesk à¾×èíĒĒèşãĒéꝤŌ³Ā×¹ĀŒ¹àĀ×èíãºéĀŪ»áººà  
´Ē;ì·çí»ãĒé

ꝤŌ³ĒÁºŒµŌ¹ŌéÁŌ»ĀĐĀĀ¹àĀ×èíꝤŌ;ŌĀŒ´µŒéş;ŌĀáĒ´şĀŌ¾  
çíşŒĀŌ¾çíş·èŌ¹à»ç¹;Ā³ŌăĀèĒ¹ŒºĒ¹ Ń¹;Ā³Ō¹Ōé ĀŌ¾Ō¹Ī  
çíş·èŌ¹ŌŒà»ĀŌèĀ¹à»ç¹ãºé;ŌĀăĀèă  
´éŒéŌ·èŌ¹ăĀèµíºꝤàµ×í¹Ō¹ĪĀŌĀă¹ 15 ÇŌ¹Ō·ŌꝤŌ;ŌĀŒ´µŒéş  
Œéşà´ŌĀŒŒŪ;¹Ō;ĀŒºĀŌ

Ā;àĀŌ;ŌĀàĀ×í;ĀŌĀ;ŌĀ¹Ōé ŒéŌ·èŌ¹ăĀèµéíş;ŌĀãĒéĀŌ;ŌĀàµ×í¹

## à;çº/;ÁÑºκx¹μÓáĒ¹èšäíαí¹à´Ê;ì·éí»â´ÁÍÑμâ¹ÁÑμÔ

àÁxèí;ÁèíšĒÓĒÑº;ÒàκÃxèíšĒÁÒÂ¹ŌéíÂÙèã¹ÀÒÇĐà»Ô´ Matrox  
PowerDesk ¨Đà;çººÑ¹·Ō; áÁĐ;Ùéäíαí¹à´Ê;ì·çí»μÒÁμÓáĒ¹èšà´ÔÁâ  
´ÁÍÑμâ¹ÁÑμÔ ¨ĐÁŌ;ŌÃà;çººÑ¹·Ō;áÁĐ;ÙéμÓáĒ¹èš  
çíšäíαí¹àĒÁèŌ¹Ōé·Ō;κÃÑés·Ōè·èŌ¹à»ÁŌèÂ¹à´Ê;ì·çí» ĒÃxí  
àÃâ«ÁÙºÑè¹

**ĒÁŌÂàĒμŌ:** ¶éŌ·èŌ¹;ŌÁÑšãºéà´Ê;ì·çí»áººĒÁŌÂºŌ´áĒ´š¼Á  
áÁĐμÓáĒ¹èš¨ÃŌšçíš;ŌÃáĒ´šÀŌ¾ä´éà»ÁŌèÂ¹á»Ášä»¾xé¹·Ōèà  
´Ê;ì·çí»çíš·èŌ¹¨Đà»ÁŌèÂ¹ä»´éÇÂ

**à;çº/;ÃÑº×¹µÓáË¹èşÇÔ¹â´ÇÊîâ´ÂÍÑµâ¹ÃÑµÔ**

àÁ×èìà»Ô´;ÃèÍşàÃ×Í;¹Õé Matrox PowerDesk  
“Đ·Ó;ÒÃà;çºáÃĐ;ÃÑº×¹ç¹Ò´áÃĐµÓáË¹èşçÍşâ»Ãá;ÃÁÇÔ¹â´ÇÊîâ  
´ÂÍÑµâ¹ÃÑµÔµÓáË¹èşµèÒş æ  
“Đ¶U;à;çºáÃĐ;ÃÑº×¹áµèÃĐ×ÃÑéş·Õè·èÒ¹à»ÃÕèÂ¹á»Ãşà  
´Ê;ì·çÍ»ËÃ×ÍàÃâ«ÃÛºÑè¹çÍşºÃÔàÇ³áÊ´şÀÒ¾çÍş·èÒ¹


**ËÁÒÂàËµØ:** ¶éÒ·èÒ¹;ÓÃÑşăºéà´Ê;ì·çÍ»áººËÁÒÂºØ´áÊ´ş¼Á  
áÃĐµÓáË¹èş”ÃÔşçÍş;ÒÃáÊ´şÀÒ¾ä´éà»ÃÕèÂ¹á»Ãşä»¾×é¹·Õèà  
´Ê;ì·çÍ»çÍş·èÒ¹”Đà»ÃÕèÂ¹ä»´éÇÂ

## άΈ΄σάΑ¹Ùã¹ÊèÇ¹·ÕèàËç¹ä΄έ

àÁ×èìàÁ×ί;ÁèίσάÁ×ί;¹Õέ Matrox PowerDesk “ĐάΈ΄σάΑ¹Ù  
çÖé¹ã¹΄΄ÍÀÒ¾ÊèÇ¹·ÕèÁίσάËç¹ä΄έçί§ºÃÔàÇ³άΈ΄σάÀÒ¾çί§·èÒ¹ (ºÃÔàÇ³  
΄ÙÀÒ¾) πØ³ÊÁºÑμÔ¹ÕέÁÕ»ÃĐâÂª¹ìàÁ×èìËÀÒÁæ ÊèÇ¹çί§ºÃÔàÇ³à  
΄Êì·çί»çί§·èÒ¹ÍÀÙè¹ί;ºÃÔàÇ³΄ÙÀÒ¾ â΄ÂÁÕ»ÃĐâÂª¹ìàªè¹à  
΄ÕÂÇ;ÑºπØ³ÊÁºÑμÔ«ÙÁçί§ Matrox

**ËÁÒÁàËμØ:** πØ³ÊÁºÑμÔ¹ÕέäÁèÁÕ¼ÁμèìàΑ¹Ù **Start** çί§ Windows  
98/2000

## άΈ΄\$älıı¹ Matrox QuickDesk ²¹ά¶°Ê¶Ò¹Đ

 à»Ô΄;ÅèÍ\$àÅ×Í;¹Õéà¾×èÍάΈ΄\$älıı¹MatroxQuickDesk ²¹ά¶°Ê¶Ò¹Đ  
ϕÍ\$ÇÔ¹â΄ÇÊì  
΄Ùà¾ÔèÀμÔÁ...

∅ [Matrox QuickDesk](#)



## à»Ô´ Matrox QuickDesk àÁ×èlàÃÔèÁà×Ã×èÍ§

à»Ô´; ÒÃ·Ó§Ò¹çÍ§; ÅèÍ§; Òà×Ã×èÍ§ËÁÒÂ¹Õéà¾×èÍ§É Matrox  
QuickDesk àÃÔèÁµé¹; ÒÃ·Ó§Ò¹·Ø; ×ÃÑé§·Õèà»Ô´ Windows ãËÁè

´Ùà¾ÔèÁµÔÁ...

∅ [Matrox QuickDesk](#)

## ϕΑΟΑϕ¹Ο´μΝÇ³ÖέϕÍȘàΑΟÊì

à»Ò´;ÒÃ·ÓȘÒ¹ϕÍȘ;ĂèÍȘ;ÒàκÃ×èÍȘËÀÒÂ¹Öéà¾×èÍϕΑΟΑϕ¹Ο´μΝÇ³Öέ  
ϕÍȘàΑΟÊìà¾ÒèÁϕÖé¹ÊÍȘà·èÒ

μΝÇ³ÖέϕÍȘàΑΟÊì·ĐÁÕϕ¹Ο´ăËèϕÖé¹à©¾ÒĐàÁ×èÍÒÃì  
´άÇÃìá¼è¹ÇȘ·Ã;ÃÒ;Ô;Êì Matrox ·ÓË¹éÒ·ÕèϕÂÑºμΝÇ³Öέ  
ϕÍȘàΑΟÊì¹Öé ËÃ×ÍàÁ×èÍ«Í;·ìáÇÃìăÁèä´é·ÓË¹éÒ·ÕèϕÂÑºμΝÇ³Öέ  
ϕÍȘàΑΟÊì·ÑέȘ¹Öé «Í;·ìáÇÃì·ĐϕÂÑºμΝÇ³Öέ  
ϕÍȘàΑΟÊìà©¾ÒĐàÁ×èÍ;ÓÂÑșă³é;ĂØèÁËÖ·Õè»ÃĐ;Íº´έÇÂËÖμèÒȘ æ  
ΑÒ;çèÒ 16 ÊÖ

**ËÁÒÀÈμØ:** ¹¹·´ÍáÊ´ȘÀÒ¾ÁÍȘϕÍȘá¼è¹ÇȘ·Ã;ÃÒ;Ô;Êì·ÕèÊ¹ÑºÊ¹Ø¹  
DualHead ¹Ñé¹ μΝÇ³ÖέϕÍȘàΑΟÊì·ĐϕÂÑºă´é´έÇÂ«Í;·ìáÇÃìàÊÁÍ  
ϕ³Đ·Õè;ÓÂÑșă³éκØ³ËÁºÑμÔ´´ÍáÊ´ȘÀÒ¾ËÁÒÂ·´ÍϕÍȘ DualHead  
ÃèÇÁ;Ñº Windows 2000 ËÃ×ÍκØ³ËÁºÑμÔ DualHead Clone ·ÑέȘ·´ÍáÊ  
´ȘÀÒ¾ËÂÑ;áĂĐÁÍȘ·ĐËÒÁÒÃ¶ă³éμΝÇ³ÖέϕÍȘàΑΟÊì·ÕèϕÂÑºă´é  
´έÇÂ«Í;·ìáÇÃì

## ã²éíÒÃì´áÇÃìà¾×èíÀÒ;μÑÇ³ÖéçÍšàÁÒÈìÊÕ

à»Ò´;ÒÃ·ÓšÒ¹çÍš;ÅèÍš;ÒàκÃ×èÍšËÁÒÂ¹Õéà¾×èíãËéá¹èã´´ÇèÒ  
μÑÇ³ÖéçÍšàÁÒÈì Windows ·Õèà»ç¹ÊÕ´´ÐçÂÑºä»ÁÒä´é´éÇÃÍÒÃì  
´áÇÃì;ÃÒ;Ò;Êì Matrox ÊÒ;μÑÇ³ÖéçÍšàÁÒÈìçÂÑºä´é´éÇÃÍÒÃì´áÇÃì  
μÑÇ³ÖéçÍšàÁÒÈì´´ÐäÀè;Ð¾ÃÒºËÃ×ÍËÒÃä»ÊÒ;íÁÙè¹;à  
çμ¾×é¹·Õè·Õè¶Ù;ÁÒ;«éÓíÃèÒšÃÇ´àÃçÇ (μÑÇíÃèÒšà²è¹  
Ë¹éÒμèÒšÇÒ´Òáí)

ÊÒ;í;ÅèÍš;ÒàκÃ×èÍšËÁÒÂ¹Õé·ÓšÒ¹áÃÐμÑÇ³Öé  
çÍšàÁÒÈìã²é;ÅØèÁËË·Õè»ÃÐ;íº´éÇÃËËÁÒ;í;ÇèÒ 16 ÊÕ  
;ÁØèÁËË´´Ð¶Ù;Á´Áš«ÒèšÍÒ´·ÓãËéÃÑ;É³ÐËËçÍšμÑÇ³ÖéàÁÒÈì´éíÃš  
ÊÒ;κØ³äÁèμéÍš;ÒÃãËé;ÅØèÁËËçÍšμÑÇ³ÖéçÍšàÁÒÈìÁ´Áš  
ãËéã²é»ØèÁκÇºκØÁ Windows à¾×èíàÃ×í;μÑÇ³Öé  
çÍšàÁÒÈì·Õèã²é;ÅØèÁËË 16 ÊÕËÃ×Í¹éíÃ;ÇèÒ ËÃ×íμéÍšá¹èã´´ÇèÒ  
äÁèã²é;ÒàκÃ×èÍšËÁÒÃä´ æ ã¹;ÅèÍš;ÒàκÃ×èÍšËÁÒÂ¹Õé

**ËÁÒÃèËμØ:** 01´´íáË´šÀÒ¾ÃÍççÍšá¼è¹Çš´´Ã;ÃÒ;Ò;Êì·ÕèÊ¹ÑºÊ¹Ø¹  
DualHead ¹Ñé¹ μÑÇ³ÖéçÍšàÁÒÈì´´ÐçÂÑºä´é´éÇÃ«Í;·íáÇÃìàËÁÍ  
ç³Ð·Õè;ÓÃÑšã²éκØ³ËÁºÑμÔ´´íáË´šÀÒ¾ËÁÒÃ´´ÍçÍš DualHead  
ÀèÇÁ;Ñº Windows 2000 ËÃ×íκØ³ËÁºÑμÔ DualHead Clone ·Ñés´´íáË  
´šÀÒ¾ËÃÑ;áÃÐÃÍš´´ÐËÒÁÒÃ¶ã²éμÑÇ³ÖéçÍšàÁÒÈì·ÕèçÂÑºä´é  
´éÇÃ«Í;·íáÇÃì

**ã<sup>æ</sup>éμÑÇàÃèšã<sup>1</sup>;ÒÃÇÒ´ÀÒ<sup>¾</sup>ËÀÒÃàËÀÕèÃÁ**

àÁ×èí;ÃèíšãËèè×Ã×èíšËÁÒÃ<sup>1</sup>ÕéíÃÙèã<sup>1</sup>ÀÒÇĐà»Ô´

“ĐÁÕ;ÒÃã<sup>æ</sup>éμÑÇàÃèšÍÒÃì´áÇÃìà<sup>¾</sup>×èíÇÒ

´ÀÒ<sup>¾</sup>ËÀÒÃàËÀÕèÃÁá<sup>ºº</sup>«Ñ<sup>º</sup>«éí<sup>1</sup>

¶éÒÀÒ<sup>¾</sup>ËÀÒÃàËÀÕèÃÁá<sup>ºº</sup>«Ñ<sup>º</sup>«éí<sup>1</sup>äÁèä´éÃÑ<sup>º</sup>;ÒÃÇÒ´ÍÃèÒš¶Ù;μéíš

ÀÒÃã<sup>1</sup>â»Ãá;ÃÁ»ÃĐÃØ;μìâ»Ãá;ÃÁã´â»Ãá;ÃÁË<sup>1</sup>Öèš

(×š“Đà»ç<sup>1</sup>â»Ãá;ÃÁËÓËÃÑ<sup>º</sup>ÇÒ´ÀÒ<sup>¾</sup>ËÃ×ÍÍ;á<sup>ºº</sup>) â»Ã

´Ã;àÃÔ;ÒÃàÃ×Í;ÃèíšãËèè×Ã×èíšËÁÒÃ<sup>1</sup>Õé

ã<sup>²</sup>éíØ»ĴĂ<sup>³</sup>ìàĴç<sup>º</sup>ÀÒ<sup>¾</sup>ã<sup>¹</sup>κÇÒÁ"Óάκ<sup>²</sup>

àÁ×èíÁŌĴŌĴ;ÒàκĂ×èí§ĒÁŌĀ<sup>¾</sup>×èíà»Ô´ÀÒÇĐĂŌĀĴ;ŌĂ<sup>¹</sup>Ōé  
"ĐÁŌĴ;ŌĂã<sup>²</sup>éμŃÇàĂèŝĪŌĀì´άÇĂìà<sup>¾</sup>×èíάκ<sup>²</sup>ÀÒ<sup>¾</sup>Ô·άÁÇ»<sup>º</sup>Ò§ÀÒ<sup>¾</sup>  
ã<sup>¹</sup>κÇÒÁ"Ó;ĂŌĴ;ŌĴ;Ēì

¶éÒ·èÒ<sup>¹</sup>»ĂĐĒ<sup>º</sup>»ŃĒŌĴ;Ń<sup>º</sup>â»ĂáĴ;ĂÁã  
´â»ĂáĴ;ĂĒĒ<sup>¹</sup>Ōèŝ(μŃÇĪĀèŌŝà<sup>²</sup>è<sup>¹</sup>ĂŌĴ;ŌĂÇÒ´<sup>º</sup>Ô·άÁÇ»ĪĀèŌŝăĂè¶ŪĴ;μéíŝ)  
ĂŝĂĴ;àĂŌĴ;Ĵ;ŌĂàĂ×ĪĴ;ĂŌĀĴ;ŌĂ<sup>¹</sup>Ōé

## ãé°ÑÊÁÒÊàµíÃìÃÔ§

à»Ò´;Áèí§àÁ×í;¹Õéà¾¼×éí ãé°ÑÊÁÒÊàµíÃìÃÔ§;Ñ°á¼§;ÃÒ¿Ò;Êì  
Matrox

¶Í§·èÒ¹°ÑÊÁÒÊàµíÃìÃÔ§à»ç¹×Ø³Ê°ÑµÔ·Õè·ÓãËéá¼§àÊÃÔÁ·Ó§Ò¹ä  
´éã¹¶³Ðà´ÕÃÇ;Ñ¹;Ñ°CPU ¶Í§×ÍÁ¾¼ÔÇàµíÃì¶Í§·èÒ¹

¶ÉÒ·èÒ¹ÃÕ×ÍÁ¾¼ÔÇàµíÃìPentium ×ÇÒÁàÃÇÇËÛ§ (àÃÇÇ;ÇèÒ 166  
MHZ) ×ÇÒÁÊÒÁÒÃ¶ã¹;ÒÃáÊ´§ÀÒ¾¼¶Í§â»Ãá;ÃÁÊÇè¹ãËè´Ð´Õ  
¶Öé¹¶ÉÒ;Áèí§àÁ×í;¹Õé¶Ù;à»Ò´

à¾¼×éíãé°ÑÊÁÒÊàµíÃì á¼§;ÃÒ¿Ò;Êì¶Í§·èÒ¹µéí§ÁÕ IRQ  
×ÍÁ¾¼ÔÇàµíÃìÊèÇ¹ãËè´Ð;ÓË¹´ IRQ ãËéá¼§;ÃÒ¿Ò;Êìâ´ÁíÑµâ¹ÁÑµÔ  
áµè°Ò§ÃÐ°°ÍÒ´ãÁè;ÓË¹´ ¶ÉÒá¼§;ÃÒ¿Ò;Êì¶Í§·èÒ¹ãÁèä´éÃÑ° IRQ  
â»Ãá;ÃÁ «Öè§ãé°ÑÊÁÒÊàµíÃì Matrox ÍÒ´ãÁèÊÒÁÒÃ¶·Ó§Ò¹ä  
´éíÁèÒ§¶Ù;µéí§ â»Ã´´Ù¶éíÁÛÀ¾¼ÔèÁàµÔÁä´é´Ò;×ÙèÁ×íµÔ  
´µÑé§á¼§ Matrox ÊÃ×í×ÙèÁ×í¶Í§ÃÐ°°¶Í§·èÒ¹

×ÍÁ¾¼ÔÇàµíÃìà;èÒ°Ò§à×Ã×èí§  
ÍÒ´ãÁèÊ¹Ñ°Ê¹Ø¹°ÑÊÁÒÊàµíÃìÃÔ§ãËè»Ò´;Áèí§àÁ×í;¹Õé¶ÉÒ  
×ÍÁ¾¼ÔÇàµíÃì¶Í§·èÒ¹ãÁèÊ¹Ñ°Ê¹Ø¹°ÑÊÁÒÊàµíÃìÃÔ§

Í¹Öè§ ¶ÉÒ·èÒ¹ãé analog joystick áÐÊÑ§à;µØàËÇ¹  
"ÀÒ¾¼;ÃÐµØ;"(;ÒÃáÊ´§ÀÒ¾¼¼Ô´»µÔ) ;Ñ°â»Ãá;ÃÁDirectX ·´Áí§»Ò  
´;Áèí§àÁ×í;¹Õé

## ãé Z-buffer áº 32 °Ôµ

àÅ×í;ÀèÍàÅ×í;¹Õéà¾×èãéµÑÇαÇºαØÁ;ÒÃáÊ  
´ŞÀÒ¾µÑÇ·ÕèÊÍà»ç¹´ÍÀÒ¾çÍŞ Windows àÁ×èìãéαØ³ÊÁºÑµÔ¹Õé  
ºÔ»;ÃÒ;Ô;Ê;Ë¹ÕèŞºÔ»´ÐαÇºαØÁ´ÍÀÒ¾ÊÍ´Í â´ÁáµèÅÐ´ÍÃÕ;ÒÃáÊ  
´ŞÀÒ¾çÍŞµÑÇàÍŞ

â»Ãá;ÃÁ Direct3D äÁè·Ø;â»Ãá;ÃÁ·ÕèÊ¹ÑºÊ¹Ø¹ Z-buffer áº 32 °Ôµ

**ã<sup>æ</sup>é·Õè;ÃÍšàÁ×èÍ»ÃÑ<sup>º</sup>ç<sup>¹</sup>Ò´**

àÁ×èÍ;ÅèÍšà<sup>æ</sup>ç<sup>¹</sup>Õé¶Ù;à»Ô´

ÇÔ<sub>¸</sub>Õ;ÒÃ;ÃÍš<sup>ˆ</sup>Đ¶Ù;ã<sup>æ</sup>éà<sup>¾</sup>×èÍà<sup>¾</sup>ÔèÁ<sup>æ</sup>Ø<sup>³</sup>À<sup>º</sup>¾çÍšÀ<sup>º</sup>¾ã<sup>¹</sup>

ç<sup>³</sup>ĐàÅ<sup>¹</sup>áçéÁÇÔ´ÕâÍ·ÕèÁÕ;ÒÃ»ÃÑ<sup>º</sup>ç<sup>¹</sup>Ò´



## ¡ÒÃÇÒ´"Íá¹ÃÐËÇèÒØàÇÍÃÌµÔ¼ÍÁáºÁŞ¼ì

àÁ×èlà»Ô´;ÒÃ·ÓŞÒ¹ ä´ÃàÇÍÃÌ DirectDraw/Direct3D "ÐÃÍãËéà;Ô´  
´;ÒÃÇèÒØá¹ÇµÑésº¹"ÍÁÒ¾¼;èÍ¹·Õè"ÐáÊ´ŞÀÒ¾¼ã¹à;ÃÁãËÁè  
ÁÔ©Ð¹Ñé¹à;ÃÁãËÁè"Ð»ÃÒ;´çÖé¹·Ñ¹·Õ

àÁ×Í;ÁèÍ;Òà×Ã×èÍËÁÒÂ¹Õé  
ËÒ;×Ø³àËÇ¹ÃÍÁ©Õ; (ÁÒ¾¼äËÇã¹ÊèÇ¹·ÕèËÒÂä») ã¹â»Ãá;ÃÁ DirectX â  
´Â»;µÔáÁéÇ "Ðä´é¹¼Á;ÒÃ»´ÔºÑµÔŞÒ¹´Õ;ÇèÒàÁ×èläÁèä  
´é;Òà×Ã×èÍËÁÒÂã¹;ÁèÍ¹Õé

## αειξθ³Αὸ¼çÔ´Õâí 16 °Ôμ

àÁ×èí;Åèí\$ÉÓËÃÑº;ÒàκÃ×èí\$ËÁÒÂ¹ÕéíÂÙèã¹ÀὸÇΔà»Ô´ áÅΔàÁ×èí  
Windows ;ÓÃÑ\$ãαέ;ÅØèÁËÕ 256 ÊÕ (8 °Ôμ) ä´ÃàÇíÃì´´ÍÀὸ¼ Matrox  
´Δãαέ;ÅØèÁËÕËË\$ (16 °Ôμ) à¼×èíáÉ´\$çÔ´Õâí´Ô´Ô´ÍÅ (άέÁ AVI  
άÅΔ MPEG) °¹´´ÍÀὸ¼κÍ¼ÔÇàμίÃìφί\$·è¹

## ã<sup>æ</sup>éµÑÇàÃè§;ÒÃ·ÓËÁí;

à»Ô´ÀÒÇÐ<sup>æ</sup>èí§<sup>1</sup>Õéà<sup>¾</sup>×èíà»Ô´ $\pi$ Ø<sup>3</sup>ÊÁ<sup>º</sup>ÑµÔ " ;ÒÃ·ÓËÁí;" «Öè§ã<sup>æ</sup>é;Ñ<sup>º</sup>ä´  
´ÃàÇÍÃ` Matrox Direct3D ä´é

;ÒÃ·ÓËÁí; à»ç<sup>1</sup>»<sup>-</sup>Ô<sup>º</sup>ÑµÔ;ÒÃ·Õèâ»Ãá;ÃÁ 3D <sup>º</sup>Ò§â»Ãá;ÃÁã<sup>æ</sup>é  
à<sup>¾</sup>×èí<sup>æ</sup>èÇÃãËé;ÒÃ·Ç§µÒã<sup>1</sup>´éÒ<sup>1</sup>πÇÒÁÃÖ;·Óä´é´ÕÃÔè§çÖé<sup>1</sup>  
´éÇÃ $\pi$ Ø<sup>3</sup>ÊÁ<sup>º</sup>ÑµÔ<sup>1</sup>Õé

ÇÑµ¶Ø·ÕèíÃÙèä;Áíí;ä»´ÐàÃ×í<sup>1</sup>ËÒÃä»ã<sup>1</sup>ÊÔè§·Õè  
´ÙàËÁ×í<sup>1</sup>ËÁí; â»Ãá;ÃÁ·Õèã<sup>æ</sup>é $\pi$ Ø<sup>3</sup>ÊÁ<sup>º</sup>ÑµÔ;ÒÃ·ÓËÁí;<sup>1</sup>Õé  $\pi$ ÇÃ´Ð  
´ÙàËÁ×í<sup>1</sup>´ÃÔ§ÃÔè§çÖé<sup>1</sup>

àÁ×èí<sup>æ</sup>èí§<sup>1</sup>ÕéÁÕà $\pi$ Ã×èí§ËÁÒÃ;ÒäÇéà<sup>¾</sup>×èíà»Ô´ÀÒÇÐ  
 $\pi$ Ø<sup>3</sup>ÊÁ<sup>º</sup>ÑµÔ;ÒÃ·ÓËÁí;çí§ Direct3D ´Ðä´éÃÑ<sup>º</sup>;ÒÃàÃè§

àÁ×èí<sup>æ</sup>èí§<sup>1</sup>ÕéäÁèÁÕà $\pi$ Ã×èí§ËÁÒÃ;ÒäÇé â»Ãá;ÃÁíÒ´´´Ð (1)  
äÁèã<sup>æ</sup>é $\pi$ Ø<sup>3</sup>ÊÁ<sup>º</sup>ÑµÔ;ÒÃ·ÓËÁí;àÃÁ («Öè§àÃçç;çèÒ) ËÃ×í (2)  
àÃÕÃ<sup>1</sup>á<sup>º</sup>;ÒÃ·ÓËÁí;´Ò;ÀÒÃã<sup>1</sup>µÑÇ«Í;·íáÇÃíàí§ («Öè§·Óä´é<sup>æ</sup>éÒ;çèÒ)

¶éÒÁÕ»ÑËÒ;Ñ<sup>º</sup>´´ÍÀÒ<sup>¾</sup>ã<sup>1</sup>ç<sup>3</sup>Ð·Õèã<sup>æ</sup>é $\pi$ Ø<sup>3</sup>ÊÁ<sup>º</sup>ÑµÔ;ÒÃ·ÓËÁí; Áí§ç´Ñ  
´à $\pi$ Ã×èí§ËÁÒÃ·Õè;ÒäÇéã<sup>1</sup>èí§<sup>1</sup>Õé

## ã<sup>ä</sup>éµÑÇ<sup>α</sup>Ç<sup>º</sup>αØÁ;ÒÃáÊ´şÀÒ<sup>¾</sup>µÑÇÃÍşà»ç<sup>1</sup>´ÍÀÒ<sup>¾</sup>çÍş Windows

àÅ×í;ÀèÍşàÅ×í;<sup>1</sup>Õéà<sup>¾</sup>×èíã<sup>ä</sup>éµÑÇ<sup>α</sup>Ç<sup>º</sup>αØÁ;ÒÃáÊ  
´şÀÒ<sup>¾</sup>µÑÇ·ÕèÊÍşà»ç<sup>1</sup>´ÍÀÒ<sup>¾</sup>çÍş Windows àÁ×èíã<sup>ä</sup>éαØ<sup>3</sup>ÊÁ<sup>º</sup>ÑµÔ<sup>1</sup>Õé  
<sup>º</sup>Ô»;ÃÒ;Ô;Ê;Ë<sup>1</sup>Õèş<sup>º</sup>Ô»´Ð<sup>α</sup>Ç<sup>º</sup>αØÁ´ÍÀÒ<sup>¾</sup>ÊÍş´Í â´ÁáµèÅÐ´ÍÃÕ;ÒÃáÊ  
´şÀÒ<sup>¾</sup>çÍşµÑÇàÍş



# φείΑÙ

---

ãéã·π³ÉÁ°ÑμÔ¹ÕéàÁ×èίμέίς; ÕÃ´Ù  
φείΑÙÀà ©¾ÒÐà; ÕèÂÇ; Ñ°ÍÒÃì´άÇÃìáÅÐ«Í;·ìáÇÃì; ÕÃáÊ´şÀÒ¾  
ÃÇÁ·ÑέşËÁÒÂàÅçÃøè¹´έÇÂÊÓËÑ°φείΑÙ  
φίśάμèÅÐÃÒÂ; ÕÃã¹ã·¹Õé â»Ã´Ù¨Ò;ÃÒÂ; ÕÃÇÔ, ÕãéφίśàÃ×èίς¹Õé

**ÎÒÃì´áÇÃì;ÃÒ¿Ô;Êì**

;ÅèÍ§¹ÕéÁÕçéíÁÙÅà;ÕèÂÇ;ÑºÎÒÃì´áÇÃì;ÃÒ¿Ô;ÊìçÍ§·èÒ¹

**Ãøè¹**

¹Õèà»ç¹ª×èíáººçÍşá¼§;ÃÒ¿Ô;Êì Matrox ·ÕèãªéíÂÙèã¹»Ñ´´ØºÑ¹



**«Ô»çÍ§;ÃÒ¿Ô;Êì**

<sup>1</sup>Õèæ×Íª×èìçÍ§;ÃÒ¿ÔæªÔ<sup>¾</sup>¹ Matrox graphics card

## Επίπεδο Αξιοτήτων

Οι αξιολογητές αξιολογούν τον βαθμό στον οποίο οι μαθητές έχουν αποκτήσει τις δεξιότητες που περιγράφονται στο πρόγραμμα σπουδών. Η αξιολόγηση γίνεται με βάση τα αποτελέσματα των εξετάσεων και των εργασιών που έχουν παράσχει οι μαθητές. Η αξιολόγηση γίνεται με βάση τα αποτελέσματα των εξετάσεων και των εργασιών που έχουν παράσχει οι μαθητές.

**α<sup>1</sup>Ô´ϕÍ\$Ë<sup>1</sup>èÇÂαÇÒÁ<sup>1</sup>Ó**

<sup>1</sup>Õèα×Í»ÃĐàÀ·ϕÍ\$Ë<sup>1</sup>èÇÂαÇÒÁ<sup>1</sup>Ó<sup>1</sup>á<sup>1</sup>/<sub>4</sub>\$jÃÒ¿ÔjÊìϕÍ\$·èÒ<sup>1</sup>

## RAMDAC

RAMDAC (Random Access Memory Digital-to-Analog Converter) Matrox à»ç¹àÁ;ĐàÎÔÃµ«ì ÂÔè§ RAMDAC ã¹á¼§;ÃÒ¿Ô;Êì·èÒ¹ÃÕ×ÇÒÁàÃÇÈÛ\$à·èÒã´ ×ÇÒÁÈÒÁÒÃ¶ã¹´éÒ¹;ÃÒ¿Ô;Êì·èÒ¹á¼§;ç¨ĐÂÔè§ÈÛ\$çÖé¹

## ĒÁÒÂàÅçÃØè¹

¹Õè×ÍĒÁÒÂàÅç»ÃĐˆÓá¼§ÍÑ¹à»ç¹àí;ÅÑ;É³ì ÃĐºØá¼§;ÃÒ;Ô;Êì  
Matrox ·Õè·èÒ¹ã²éíÂÙè

## ÎÒÃÌ´áÇÃÌ¾¼ÔàÈÉ

ÊÔè§¹Õé´´ĐáÊ´şÃÒÂ;ÒÃÎÒÃÌ´áÇÃÌ¾¼ÔàÈÉ·ÕèÁÕÍÂÙèº¹á¼§;ÃÒ¿Ô;Êì  
Matrox çÍş·èÒ¹

"(ÍÂÙèã¹µÑÇ)" áÊ´şxØ³ÊÁºÑµÔ·Õè¶Ù;ÊÃéÒşÍÂÙèã¹á¼§Matrox  
·Õè·ÓÁÒ´´Ò;âÃş¼ÅÔµ

"(à¾¼ÔèÁàµÔÁ)" áÊ  
´şxØ³ÊÁºÑµÔ·Õè¶Ù;ÊÃéÒşà¾¼ÔèÁàµÔÁËÑş´´Ò;·Õè·ÓÁÒ´´Ò;âÃş¼Å  
ÔµáÁéÇ

«ÍμιάÇÃìϕÍ§;ÃÒ¿Ô;Êì (ÃØè¹)

;ÃèÍ§¹ÕέÁÕϕείÁÙÅà;ÕèÂÇ;Ñº«ÍÃì¿άÇÃì;ÒÃάÊ´§ÀÒ¾

## BIOS چیست؟

BIOS چیست؟ BIOS (Basic Input/Output System)

BIOS چیست؟ BIOS (Basic Input/Output System) Matrox چیست؟ BIOS چیست؟ BIOS

BIOS چیست؟ BIOS چیست؟ BIOS چیست؟ BIOS چیست؟ BIOS



ä´ÃàÇíÃî;ÒÃáÊ´šÀÒ¾

¹Õè×ÍÃØè¹çÍsä´ÃàÇíÃî;ÒÃáÊ´šÀÒ¾çÍšMatrox·Õè¶Ù;µÔ  
´µÑéšÍÃÙèã¹ç³Ð¹Õé«ÍÃî;áÇÃì¹Õé×Çº×ØÁá¼š;ÃÒ;Ô;Êì Matrox  
çÍš·è¹

## Mini-VDD

1.0xíÃØè¹çÍ\$ VDD (Virtual Device Driver) çÍ\$ Matrox ·ÕèµÔ  
µÑésÍÂÙèã¹»Ñ'''ØºÑ¹ VDD 1.0é''Ð''Ñ';ÒÃË¹éÒ·Õè;ÒÃáÊ  
'ŞÀÒ¾áº¾×é¹º¹ (ÃÐ'ÑºµèÓ) ·ÕèÃÐºØäÇéÊÓËÑºÎÒÃì'áÇÃìçÍ\$  
Matrox ÊèÇ¹Ë¹éÒ·Õè;ÒÃáÊ'ŞÀÒ¾áº¾×é¹º¹Í×è¹æ ''Ð¶Ù;''Ñ';ÒÃâ  
'Â VDD çÍ\$ Windows

## ä'ÃàÇÍÃì Kernel

1Öèxíä'ÃàÇÍÃì Matrox kernel ÃØè¹Ë¹Öè§·ÖèμÔ  
´μÑé§ÍÃÙèã¹»Ñ´´ØºÑ¹ ä'ÃàÇÍÃì Kernel ´Ð´Ñ´;ÒÃ;Ñº;Ñ§;ì²Ñ¹´´ÍáÊ  
´§ÀÒ¾¾¾¾xé¹ºÒ¹ (ÃÐ´ÑºμèÓ) ·Öèà»ç¹;Ñ§;ì²Ñ¹à©¾¾¾¾ÒÐçÍ§ÍÒÃì´´áÇÃì  
Matrox ç³Ð·Öè Kernel çÍ§ Windows ´Ð´Ñ´;ÒÃ;Ñº;Ñ§;ì²Ñ¹´´ÍáÊ  
´§ÀÒ¾¾¾¾xé¹ºÒ¹xè¹ æ

## Matrox PowerDesk

1. Οδηγίες χρήσης Matrox PowerDesk · Οδηγός μνήμης Matrox PowerDesk  
1. Οδηγίες χρήσης Matrox PowerDesk · Οδηγός μνήμης Matrox PowerDesk

## ä´ÃàÇÍÃì DirectDraw/Direct3D

<sup>1</sup>Õèæ×ÍÃØè¹çÍsä´ÃìàÇÍÃìçÍ§ Matrox ÊÓËÃÑº DirectDraw/Direct3D  
·ÕèµÔ´µÑésÍÃÙèã¹»Ñ´´´ØºÑ¹ºÒ§â»Ãá;ÃÁ´Ðãªéä  
´ÃàÇÍÃì¹Õèà¾¼×èìãËéàçéÒ¶Ö§ÎÒÃì´áÇÍÃìçÍ§ Matrox â´ÂµÃ§ä´é´Õ  
çÖé¹

## Microsoft DirectX

1. Ο έλεγχος της λειτουργίας του Microsoft DirectX. Ο έλεγχος γίνεται με το πρόγραμμα μόνιμης ενημέρωσης του DirectX. Το πρόγραμμα μόνιμης ενημέρωσης του DirectX είναι διαθέσιμο στην ιστοσελίδα της Microsoft.

1.1. Ο έλεγχος της λειτουργίας του DirectX. Το πρόγραμμα μόνιμης ενημέρωσης του DirectX είναι διαθέσιμο στην ιστοσελίδα της Microsoft. Το πρόγραμμα μόνιμης ενημέρωσης του DirectX είναι διαθέσιμο στην ιστοσελίδα της Microsoft.

**Ελέγχος της λειτουργίας του DirectX:** Το πρόγραμμα μόνιμης ενημέρωσης του DirectX είναι διαθέσιμο στην ιστοσελίδα της Microsoft. Το πρόγραμμα μόνιμης ενημέρωσης του DirectX είναι διαθέσιμο στην ιστοσελίδα της Microsoft. Το πρόγραμμα μόνιμης ενημέρωσης του DirectX είναι διαθέσιμο στην ιστοσελίδα της Microsoft.

**Ê¹ÑºÊ¹Ø¹ÅÙ;æéÒ**

κÅÔ;·Õè»ØèÁ¹Õéà¾¼×èí´ÙϕείÁÙÅà;ÕèÂÇ;Ñº;ÒÃÊ¹ÑºÊ¹Ø¹ÅÙ;æéÒ

<sup>1</sup>Õèκ×ίϕείÁÙ; ÒÃ<sup>º</sup>ÃÔ; ÒÃ<sup>º</sup>èÇÂàËÅ×ÍÙ; κέÒ



## ÚáéÁíèÒ¹·Õè¹Õè

«ÅÔ;»ØèÁ¹Õéà¾¼×èÍ·Ó;ÒÃ´ÚáéÁMatrox PowerDesk "ÍèÒ¹·Õè¹Õè"  
áéÁ¹ÕéÁÕçéíÁÛ·ÕèÉÓ«Ñà;ÕèÂÇ;Ñºä´ÃàÇÍÃ;ÒÃáÊ  
´ŞÀÒ¾¼áÅĐ«ÍÃ;áÇÃìÍŞMatrox PowerDeskçÍŞ·èÒ¹

## ä»ÂÑ§ Web Site

κΑÔ;»ØèÁ¹Õéà¾×èí·Ó;ÒÃ·Ó;ÒÃμÔ´μεί;ÑºÍÔ¹àμíÃì¹çμ à¾×èí  
ϕείÁÙÀ;ÕèÂÇ;Ñº¼ΑÔμÀÑ³±ì;ÒÃºÃÔ;ÒÃªèÇÂàËΑ×ÍÀ;κέÒËÃ×Í;Ò  
Ã»ÃÑº»ÃØ§«ÍÀ;άÇÃì



## ÊÑÒ³Íí;â·Ã·ÑÈ¹ì

---

ãªé;ÃÐ´ÒÉ·Õè¶Ù;í;ÓË¹´¸Ø³ÊÁºÑµÔäÇé¹Õéà»ÅÕèÂ¹;ÒÃµÔ´µÑés TV output

ÊÓËÃÑºçéíÁÙÃ¹;ÒÃ¸Çº¸ØÁ;ÃÐ´ÒÉ·ÕèÁÕ¸Ø³ÊÁºÑµÔ·Õè;ÓË¹´äÇéáµèÅÐÍÑ¹¹Õé â»Ã´Ù·Õè context-sensitive help

a;ÃÐ´ÒÉ·Õè¶Ù;í;ÓË¹´¸Ø³ÊÁºÑµÔäÇé¹Õéãªéä´éËÒ;¸Ø³ÁÕ G100-ËÃ×í G200-based Matrox graphics card ;Ñº TV output  
«Ñ³/₄³/₄Íìµà·èÒ¹Ñé¹

## άΈ´şÀÒ¾¹â·Ã·ÑÈ¹ì

à»Ô´;ÅèìşàÅ×í;¹Õé¶éÒ·èÒ¹µéíş;ÒÃ´ÙËÃ×íºÑ¹·Ö;ì;ÒÃάΈ´şÀÒ¾¹  
çÍş×ÍÁ¾¹ÔÇàµÍÃì  
çÍş·èÒ¹º¹â·Ã·ÑÈ¹ìËÃ×Íà×Ã×èíşºÑ¹·Ö;à·»·ÕèµèÍÍÃÙè;Ñº×ÍÁ¾¹ÔÇàµÍÃì  
çÍş·èÒ¹

à»Ô´;ÅèìşàÅ×í;¹Õé ;ÒÃάΈ´şÀÒ¾¹çÍş×ÍÁ¾¹ÔÇàµÍÃìçÍş·èÒ¹  
“Đă²é×èÒ”Ñ´µÑέşâ·Ã·ÑÈ¹ì ×èÒ”Ñ´µÑέşâ·Ã·ÑÈ¹ì  
ÁÕàÃâ«ÃÙ²Ñè¹áΔÍÑµÃÒ;ÒÃÇÒ´ÀÒ¾¹µèÓ;ÇèÒ×èÒ”Ñ´µÑέş  
çÍş”ÍÀÒ¾¹×ÍÁ¾¹ÔÇàµÍÃìâ´Ã·ÑèÇä» ÍÑµÃÒ;ÒÃÇÒ  
´ÀÒ¾¹µèÓ;ÇèÒÍÒ”ÃÕ¾¹Ã·ÓăËéàËÇ¹;ÒÃ;ÃĐ¾¹ÃÕºä´é²Ñ´çÖé¹

### ×Óàµ×Í¹:

”ÍÀÒ¾¹×ÍÁ¾¹ÔÇàµÍÃìºÒşà×Ã×èíşÍÒ”ăÁèË¹ÑºË¹Ø¹ÍÑµÃÒ;ÒÃÇÒ  
´ÀÒ¾¹á¹ÇµÑέş 50 Hz «Õèşă²é;Ñº;ÒÃ”Ñ´µÑέşâ·Ã·ÑÈ¹ìÃØâÃ»  
”ÍÀÒ¾¹ºÒşà×Ã×èíşÍÒ”àËÕÃËÒÃă´é¶éÒă²éÍÑµÃÒ;ÒÃÇÒ´ÀÒ¾¹¹Õé  
ËÓËÃÑºçéÍÃÙÀ¾¹ÔèÀàµÔÁ â»Ã´Ùàì;ËÒÃ”ÍÀÒ¾¹çÍş·èÒ¹

## ÁÒμÃ°Ò¹â·Ã·ÑÈ¹ì

κΑÔ;»ØèÁàËÀèÒ¹Õέ»ØèÁË¹Öèξ»ØèÁã´ à¾¼×èíáÊ

´ξÁÒμÃ°Ò¹â·Ã·ÑÈ¹ì·Õè¶Û;ã²éâ

´Ââ·Ã·ÑÈ¹ìËÃ×íàκÃ×èίξ°Ñ¹·Ö;à·»·ÕèμèίÁÛè;Ñ°κίÁ¾¼ÔÇàμίÃìφίξ·èÒ¹:

n **NTSC** -- à»ç¹ÁÒμÃ°Ò¹â·Ã·ÑÈ¹ì·Õèã²éã¹íàÁÃÔ;ÒàË¹×íáΑÐ-  
Õè»Øè¹ÃÇÁ·Ñέξ·Õεί×è¹ æ

n **PAL** --

à»ç¹ÁÒμÃ°Ò¹â·Ã·ÑÈ¹ì·Õèã²éã¹ΑØâÃ»άΑÐ·Õ¹ÃÇÁ·Ñέξ·Õεί×è¹ æ

¶έÒÁÒμÃ°Ò¹â·Ã·ÑÈ¹ì·ÕèäÁè¶Û;μείξ¶Û;àΑ×ί; ÊÑ-

Ò³ί;·Ò;κίÁ¾¼ÔÇàμίÃì

φίξ·èÒ¹Ò·äÁè»ΑÔ;·ËÃ×ί¶Û;°Ñ¹·Ö;íÁèÒξäÁè¶Û;μείξ°¹â·Ã·ÑÈ¹ìËÃ×íà

κÃ×èίξ°Ñ¹·Ö;à·»

à¾¼×èí·ÐËÒÇèÒâ·Ã·ÑÈ¹ìËÃ×íàκÃ×èίξ°Ñ¹·Ö;à·»φίξ·èÒ¹ã²éÁÒμÃ°Ò¹ã´

´Ùàί;ÊÒÃφίξàκÃ×èίξ¹Ñέ¹

## ¡ÒÃµÑέξæèÒâ·Ã·ÑÈ¹ìÊÓËÃÑº¼ÙέªÓ¹Ò

κΆÔ¡»ØèÁ¹Õéã¾¼×èÍ»ÃÑºæèÒ·Ñ´µÑέξÊÑ-

Ò³Í¡;â·Ã·ÑÈ¹ìÊÓËÃÑº¼ÙέªÓ¹Ò æèÒ·Ñ

´µÑέξàËÃèÒ¹Õé·ΔÁÕ¼ÅµèÍÊÔèξ·Õè·èÒ¹àËç¹ËÃ×ÍºÑ¹·Ö¡º¹â·Ã·ÑÈ¹ìË

Ã×ÍàκÃ×èÍξºÑ¹·Ö¡;à»çÍξ·èÒ¹à·èÒ¹Ñέ¹

»ØèÁ¹Õéãªéä´έ¡çµèÍàÁ×èÍä´éà»Ô´ áÊ´ξΑÒ¾º¹â·Ã·ÑÈ¹ì äçέ

άÅΔãªéÁÒµÃºÒ¹â·Ã·ÑÈ¹ì·ÕèàÅ×Í¡;äçέç³Δ¹Õέ

´Ùà¾¼ÔèÁàµÔÁ...

∅ ¡ÒÃµÑέξæèÒâ·Ã·ÑÈ¹ìÊÓËÃÑº¼ÙέªÓ¹Ò -- κÓά¹Δ¹Ó

**;ÒÃµÑέşæèÒâ·Ã·ÑÈ¹ìÊÓĚÃÑº¼ÙέºÓ¹Ò -- πÓá¹Đ¹Ó**

æè»ÃÔÂÔÂçÑέ¹ÊÛçÍşÊÑÒ³Í;çÍşâ·Ã·ÑÈ¹ìçÍş Matrox  
àĚÁÒĐĚÓĚÃÑº;ÒÃ´Ù;ÃÒ;Ô;ÊìκÍÁ¾ÔÇàµÍÃìĚèÇ¹ăĚè (àºè¹  
à;ÁĚìκÍÁ¾ÔÇàµÍÃìĚ×là´Ê;ì·çÍ»çÍş Windows) ă¹â·Ã·ÑÈ¹ìĚèÇ¹ăĚè  
¨Ò;ÁÒµÃºÒ¹;ÒÃá¾ĚèĚÑÒ³ÁÒ¾¾ ;ÒÃµÑέşÊÑÒ³Í;çÍşâ·Ã·ÑÈ¹ì  
çÑέ¹ÊÛàĚÁÒĐĚÁĚÓĚÃÑº;ÒÃ´ÙÇÔ´ŎáíºŎ´àµçÁ¨ÍÁÒ¾¾ (àºè¹  
¨Ò;á;έÁÇÔ´Ŏáí) æèÒµèÒşæ àĚĚèÒ¹ŎéκÍ :

**n NTSC**

- πÇÒÁ¨έÒ: 180
- πÇÒÁàçéÁ: 234
- πÇÒÁÍŎèÁçÍşĚŎ: 137
- ÃĐ´ÑºĚŎ: 0

**n PAL**

- πÇÒÁ¨έÒ: 167
- πÇÒÁàçéÁ 255
- πÇÒÁÍŎèÁçÍşĚŎ: 138
- ÃĐ´ÑºĚŎ: 0

**ĚÁÒÂàĚµŎ:** ÊÓĚÃÑº;ÒÃµÑέşæèÒ·Ŏè´Ŏ·ŎèĚŎ´  
κŎ³ÍŎ¨µέÍş»ÃÑº;ÒÃµÑέşæèÒº¹â·Ã·ÑÈ¹ìçÍşκŎ³·ÑέşπÇÒÁ¨έÒ πÇÒÁà  
çéÁ πÇÒÁÍŎèÁçÍşĚŎáÃĐ;ÒÃµÑέşÃĐ´ÑºĚŎâ´Ě»ÃÔÂÔÂçÍşÍŎ»;  
Ě³ìÇÔ´ŎáíĚèÇ¹ăĚè¹Ñέ¹¨ĐĚÛş;ÇèÒÁÒµÃºÒ¹;ÒÃá¾ĚèĚŎ¾¾  
;ÒÃµÑέşæèÒàĚĚèÒ¹ŎéÃÑ;àĚÁÒĐĚÁáĚéÇĚÓĚĚÃÑº;ÒÃ´ÙÇÔ´Ŏáí  
áµèÍŎ¨¨ĐăÁèàĚÁÒĐĚÁ¹Ñ;ÊÓĚÃÑº;ÃÒ;Ô;ÊìκÍÁ¾ÔÇàµÍÃì (´Ñş¹Ñέ¹  
æè»ÃÔÂÔÂçÍşÊÑÒ³Í;çÍşâ·Ã·ÑÈ¹ìă¹ÃĐ´ÑºĚÛşçÍş Matrox  
¨ŎşµèÓ;ÇèÒæèÒ·ŎèàĚÁÒĐĚÁĚÓĚĚÃÑºÇÔ´Ŏáí) ÊÓĚÃÑº  
çéÍÁÛĚ¾¾ŎèÁàµŎÁà;ŎèĚÇ;ÑºÇŎ·Ŏ»ÃÑºà»ĚŎèĚ¹;ÒÃµÑέşæèÒº¹â·Ã·  
ÑÈ¹ì ;ÃŎ³ŎĚŎ;ĚŎ¨Ò;κÛèÁ×ÍçÍşâ·Ã·ÑÈ¹ìçÍşκŎ³



## ÃÒÂ; ÒÃàÃ×Í; ¤Ø³ÃÒ¾çÍ§ÃÒ¾

ãªéµÑç¤çº¤ØÃàËÃèÒ¹Õéà¾×èÍà»ÃÕèÃ¹ÃÒÂ; ÒÃàÃ×Í; ÊÓËÃÑº¤Ø³ÃÒ¾çÍ§ÃÒ¾â·Ã·ÑË¹çÍ§·èÒ¹

µÑçàÃ×Í; àËÃèÒ¹Õé·ÐäÃèÃÒ¼ÃµèÍ·ÍÃÍ¾ÔçàµÍÃìçÍ§·èÒ¹

## μείμε0<sup>1</sup>-;0Ã;ÃĐ<sup>3/4</sup>ÃÔ<sup>0</sup>

à»Ô´;ÅèíàÅ×í;<sup>1</sup>Õéà<sup>3/4</sup>×èíã<sup>0</sup>é";0ÃÅ  
´;0Ã;ÃĐ<sup>3/4</sup>ÃÔ<sup>0</sup>";Ñ<sup>0</sup>â·Ã·ÑÈ<sup>1</sup>ìËÃ×íà×Ã×èíς<sup>0</sup>Ñ<sup>1</sup>·Ö;à·»·Õèμεί;Ñ<sup>0</sup>×Í<sup>3/4</sup>ÔÇà  
μίÃìφÍς·è0<sup>1</sup> «ÖèςÍ0<sup>1</sup>·<sup>0</sup>èÇÂ»ÃÑ<sup>0</sup>»ÃØς×Ø<sup>3</sup>À0<sup>3/4</sup>φÍςÀ0<sup>3/4</sup>  
;0Ã×Ç<sup>0</sup>×ØÁ<sup>1</sup>ÕéäÁèÃ0<sup>1/4</sup>Åμεί·ÍÀ0<sup>3/4</sup>×Í<sup>3/4</sup>ÔÇàμίÃìφÍς·è0<sup>1</sup>

## Ό άΑΔ ϕΌÇ

à»Ô´;ΆείςàΆ×ί;¹Öéà¾×είάÊ´şËÃ×ίºÑ¹·Ö;ÇÔ´Öâí´ÓάΑΔ  
ϕΌÇº¹â·Ã·ÑÈ¹ÿËÃ×ίà×Ã×είςºÑ¹·Ö;à·»·ÖèμείÍÀÙè;Ñº×ÍÁ¾ÔÇàμίÃì  
ϕÍς·èÒ¹

;ÒÃ×Çº×ØÁ¹ÖéäÁèÁÖ¼Åμεί´´ÍÀÒ¾×ÍÁ¾ÔÇàμίÃìϕÍς·èÒ¹

»ÃÑº»ÃØ§µÑÇË¹Ñ§Ê×Í

à»Ô´;ÅèÍàÅ×Í;¹Õéà¾×è»ÃÑº»ÃØ§ÀÒ¾  
çÍ§µÑÇË¹Ñ§Ê×Íºâ·Ã·ÑÈ¹·ÕèµèÍÀÙè;Ñº×Í¾ÔÇàµÍÀìçÍ·èÒ¹  
çÖé¹éÒ§  
(ËÃ×Í;ÒÃºÑ¹·Ö;µÑÇË¹Ñ§Ê×Íºà×Ã×èÍºÑ¹·Ö;à·»·ÕèµèÍÀÙè;Ñº×Í¾  
ÔÇàµÍÀìçÍ·èÒ¹) àÁ×èÍºéºØ³ÊºÑµÔ¹Õé µÑÇË¹Ñ§Ê×ÍÒº»ÃÒ;¯×ÁºÑ  
´ËÃ×Íà´è¹;çèÒ  
»Ô´;ÅèÍ¹Õé¶éÒ·èÒ¹äÀèµéÍ;ÒÃãËéÊÑÒ³â·Ã·ÑÈ¹·Ò;×Í¾ÔÇàµÍÀì  
çÍ·èÒ¹¶Ù;à»ÃÕèÀ¹á»Å§´éÇÀÇÔ,Õ¹Õé  
;ÒÃ×Çº×Ø¹ÕéäÀèÀÒ¼Åµè¹·ÍÀÒ¾×Í¾ÔÇàµÍÀìçÍ·èÒ¹

## Α΄ "Ø΄αΑΟ΄

à»Ô΄;ΆείςàΆ×ί;¹Õεά¾×είΆ΄»ÑËÒ"Ø  
΄αΑΟ΄ÊÓËÃÑºâ·Ã·ÑÈ¹ËÃ×láαÃ×είςºÑ¹·Ö;à·»·ÕèμείÍÀÙè;ÑºαÍÁ¾ÔÇà  
μίÃìçÍς·èÒ¹ â´ÂËÒÂàαºÔÁËÑÒ³ÇÔ´ÕâίαÇº (RCA)  
(ÁÔ¼Á¹είÁΑÒ;ÊÓËÃÑº S-ÇÔ´Õâί) ""Ø΄αΑΟ΄" à»ç¹»ÑËÒË¹Öèς  
çÍς;ÒÃάÉ´ςΑÒ¾â·Ã·ÑÈ¹·Õè´ÙàËÁ×ί;¹Ñº"Ø  
´ααΑ×εί¹à»ç¹ά¶ÇÍÁÙèμÒÁçÍºÀÒ¾

»Ô΄;Άείς¹Õέ¶éÒ·èÒ¹äÀέμείς;ÒÃãËéËÑÒ³â·Ã·ÑÈ¹"Ò;αÍÁ¾ÔÇàμίÃì  
çÍς·èÒ¹¶Ù;à»ÃÕèÁ¹ά»Ας´έÇΑÇÔ, Ö¹Õέ

;ÒÃαÇºαØÁ¹ÕέäÁèÁÔ¼Áμεί"ÍÀÒ¾αÍÁ¾ÔÇàμίÃìçÍς·èÒ¹

## άΈ´ςάη°ÊÕ°¹â·Ã·ÑÈ¹ì

κΆÔ;»ØèÁ¹Õéà¾×èÍάÊ

´§ËÃ×Í°Ñ¹·Ö;άη°ÊÕ°¹â·Ã·ÑÈ¹ìËÃ×ÍàκÃ×èÍ§°Ñ¹·Ö;à·»·ÕèμείÍÀÙè;Ñ°κί

Á¾ÔÇàμίÃìçÍ§·èÒ¹ ÍÑ¹à»ç¹»ÃĐâÂª¹;ă¹;ÒÃ·´ÉÍ°;ÒÃ·Ñ

´μÑέ§ÀÖ¾ÊÓËÑ°â·Ã·ÑÈ¹ìËÃ×ÍàκÃ×èÍ§°Ñ¹·Ö;à·»çÍ§·èÒ¹

;ÒÃκÇ°κØÁ¹ÕéäÁèÁÕ¼Άμεί´´ÍÀÒ¾κÍÁ¾ÔÇàμίÃìçÍ§·èÒ¹

## »ÃĐàÀ·àκà°ÔÂÊÑÒ³Í;ı

ãªé;ÂèÍ§¹Õéà¾¼×èÍÁÊ´§»ÃĐàÀ·çÍ§àκà°ÔÂ·Õè·èÒ¹;ÓÂÑ§ãªéμεèÊÑ-  
Ò³Í;ıÇÔ´ÕâÍçÍ§κÍÁ¾¼ÔÇàμÍÃìçÍ§·èÒ¹  
ä»ÂÑ§â·Ã·ÑÈ¹ìËÃ×ÍàκÃ×èÍ§ºÑ¹·Ö;à·»çÍ§·èÒ¹  
àÂ×Í;Ë¹Õè§ÍÂèÒ§¨Ò;ÃÔÂ;ÒÃμèä»¹Õé:

n **ÊÑÒ³κÇºËÃ×Í§-ÇÔ´ÕâÍ** -- ÊÓËÃÑºàκà°ÔÂÊÑÒ³κÇº ËÃ×Í  
àκà°ÔÂ§-ÇÔ´ÕâÍ «Õè§ãªé·ÑèÇä»ÁÒ;·ÕèÊØ´â´Âà©¾¼ÒĐ¹ı;ÂØâÃ»

n **SCART - ÊÑÒ³κÇº** -- ÊÓËÃÑºàκà°ÔÂ SCART ·ÕèÁÕμÑÇμèÍÇÔ  
´ÕâÍÊÑÒ³κÇº

n **SCART - RGB** -- ÊÓËÃÑºàκà°ÔÂ SCART ·ÕèÁÕμÑÇμèÍÇÔ´ÕâÍ  
RGB

## ¡ÒÃ"Ñ´μÑέ\$ΑΟ¾â·Ã·ÑÈ¹

ãé;Áèí\$ÃÒÂ;ÒÃà¾×èlàÁ×í;»ÃĐàÀ;ÒÃϣÇºϣØÁâ·Ã·ÑÈ¹

áÁέÇ"Ö\$ãéá¶ºàÁ×è¹à¾×èlà»ÃÕèÁ¹ϣèÒ"Ñ

´μÑέ\$ÊÓËÃÑº;ÒÃϣÇºϣØÁ¹Õé

¡ÒÃϣÇºϣØÁàËÁèÒ¹ÕéÁÕ¼ÁμèÍÊÔè\$·Õè·èÒ¹

´ÙËÃ×íºÑ¹·Ö;º¹â·Ã·ÑÈ¹ËÃ×ÍàϣÃ×èí\$ºÑ¹·Ö;à·»·ÕèμèÍÁÙè;ÑºϣÍÁ¾Ô  
ÇàμíÃìϕÍ\$·èÒ¹

¡ÒÃϣÇºϣØÁ¹ÕéäÁèÁÕ¼ÁμèÍ"ÍÀÒ¾ϣÍÁ¾ÔÇàμíÃìϕÍ\$·èÒ¹

## ËÁÒÂàËμØ: ϣèÒ"Ñ

´μÑέ\$ΑΟ¾·ÕèμèÒ\$;Ñ¹"Đ¶Ù;à;ϣººÑ¹·Ö;äÇέÊÓËÃÑºάμèÁΔÁÒμÃºÒ¹  
ϕÍ\$â·Ã·ÑÈ¹ (NTSC ËÃ×Í PAL).



## μΝέξπεòπεò"Ñ´μΝέξΑò¾ãËÁè·ÑέξËÁ´

ι´»∅èÁ¹Õéà¾×èί;Ùέπ×¹πεò"Ñ

´μΝέξËÓËÑºâ·Ã·ÑË¹ιáÅ∂àπÃ×είςºÑ¹·Ö;à·»·ÕèμείÍÀÙè;ÑºπÍÁ¾ÔÇà  
μÍÃιçÍς·èÒ¹ πεò"Ñ´μΝέξ"∂;ÃÑºπ×¹ËÙèπεò·Õè;ÓË¹´äÇέ

;òÃ;Ùέπ×¹πεò"Ñ´μΝέξäÁèÁÕ¼Åμεί"ÍÀò¾πÍÁ¾ÔÇàμÍÃιçÍς·èÒ¹



## DualHead

---

ãé;ÃÐ´ÒÉ·ÕèÁÕØ³ÊÁºÑµÔ·Õè;ÓË¹´äÇé¹ÕéÇºØÁ;Õà´´ÍÃìµèÒ§ æ  
çÍ§ DualHead çÍ§ Matrox graphics card ´éÇÂ;Õà´´ÍÃìµèÒ§ æ  
àËÀèÒ¹Õé graphics card ÍÑ¹à´´ÕÂÇ;çÊÒÁÒÃ¶ÇºØÁ´´ÍÀÒ¾¼ 2  
´´Íã¹àÇÀÒà´´ÕÂÇ;Ñ¹ä´é´´´ÍÀÒ¾¼´´Í·ÕèËÍ§µèÍ;Ñº Matrox graphics card  
ÊÒÁÒÃ¶ãéà»ç¹´´ÍÍÁ¾¼ÔÇàµÍÃìáºº·Õèãé;Ñ¹ (CRT) ,´´Íáº¹ , TV ËÃÍ  
VCR

ÊÓËÃÑºçéÍÁÙÃã¹;ÒÃÇºØÁ;ÃÐ´ÒÉ·ÕèÁÕØ³ÊÁºÑµÔ·Õè;ÓË¹  
´äÇéáµèÃÐÍÑ¹Õé à»Ã´´Ù·Õè context-sensitive help

;ÃÐ´ÒÉ·ÕèÁÕØ³ÊÁºÑµÔ·Õè;ÓË¹´äÇé¹Õéãéä´é¶éÒ Matrox  
graphics card ÁÕ DualHead support à·èÒ¹Ñé¹

## DualHead · ÓãĚéäÁèÊÒÁÒÃ¶

àÅ×Í;»ØèÁ<sup>1</sup>Õéà<sup>3/4</sup>×èíãĚé“ÍÀÒ<sup>3/4</sup>“Í·Õè 2 ¶Í§ Matrox graphics card

ã<sup>2</sup>ééŞÒ<sup>1</sup>äÁèä´é ¶Ø<sup>3</sup>ÍÒ“µéÍ§;ÒÃ restart

¶ÍÁ<sup>3/4</sup>ÔÇàµíÃìÊÓĚÃÑ<sup>2</sup>;ÒÃà»ÅÕèÂ<sup>1/4</sup>Å·Õèà;Ô´¶Öé<sup>11</sup>Õé

“ÍÀÒ<sup>3/4</sup>·Õè 2 “Đă<sup>2</sup>ééäÁèä´é ¶éÒ¶Ø<sup>3</sup>äÁèä´éã<sup>2</sup>ééŞÒ<sup>1</sup>ÁÑ<sup>1</sup>ÍAÙè

ÊÔèŞ<sup>1</sup>ÕéíÒ“á;éä¶;ÒÃáÊ´Ş<sup>1/4</sup>Å¶Í§“ÍÀÒ<sup>3/4</sup>ĚÃÑ;

## DualHead Clone,DVDMax ĘĂ×Í Zoom

àĀ×Í;»ØèÁ<sup>1</sup>Ōéà<sup>3/4</sup>×èìă<sup>é</sup>ĵŌà ĨĀìµèŌ§ æ çÍ§ DualHead Clone ,  
DualHead Zoom ĘĂ×Í DualHead DVDMax  
ĵŌà ĨĀìàĘĀèŌ<sup>1</sup>ŌéæØ<sup>3</sup>ĘŌÁŌĀŋĵă<sup>é</sup>é<sup>1</sup>àÇĀŌà ŌĀÇ;Ŋ<sup>1</sup>  
ĨĀŌ<sup>3/4</sup>·ŊésĘÍ§ Ĩµèì;Ŋ<sup>o</sup> Matrox graphics card ĨĀŌ<sup>3/4</sup> Ĩ·Ōè 2  
ÍŌ ĨĨĐà»ç<sup>1</sup> ĨĀÍĀ<sup>3/4</sup>ŌÇàµÍĀì<sup>o</sup>·Ōèă<sup>é</sup>;Ŋ<sup>1</sup> (CRT) , ĨĀ<sup>o</sup> ,TV ĘĂ×Í VCR

n 'éÇĀĵŌà ĨĀìçÍ§ DualHead Clone æØ<sup>3</sup>ĘŌÁŌĀŋĵ'Ū;ŌĀĘŌà<sup>1</sup>Ō  
çÍ§ ĨĀŌ<sup>3/4</sup>ĘĀŊ;Ō<sup>1</sup> ĨĀŌ<sup>3/4</sup> Ĩ·Ōè 2ă<sup>é</sup>  
ĘŌèŊ<sup>1</sup>Ōéà»ç<sup>1</sup>»ĀĐâĀ<sup>a</sup>îĘŌĘĀŊ<sup>o</sup>;ŌĀ<sup>1</sup>ŌàĘ<sup>1</sup>ÍŊŌ<sup>1</sup>ĘĂ×ÍĘŌĘĀŊ<sup>o</sup>;ŌĀàĀè<sup>1</sup>à  
ĵĀĘì'éÇĀ·ŌÇŌ

n 'éÇĀĵŌà ĨĀìçÍ§ DualHead Zoom æØ<sup>3</sup>ĘŌÁŌĀŋĵă<sup>é</sup> ĨĀŌ<sup>3/4</sup> Ĩ·Ōè 2  
'Ū<sup>3/4</sup>×é<sup>1</sup>·Ōè·Ōè«ŪĀàçéŌă»çÍ§ ĨĀŌ<sup>3/4</sup>ĘĀŊ;ă<sup>é</sup>

n 'éÇĀĵŌà ĨĀìçÍ§ DualHead DVDMax æØ<sup>3</sup>ĘŌÁŌĀŋĵàĀè<sup>1</sup>ÇŌ'Ōâí  
'Ō'ŌµÍĀă<sup>1</sup>ÇŌ<sup>1</sup>â'Çì<sup>o</sup> ĨĀŌ<sup>3/4</sup>ĘĀŊ;ă<sup>é</sup> áĀĐă<sup>1</sup>ç<sup>3</sup>Đà'ŌĀÇ;Ŋ<sup>1</sup>;çĘŌÁŌĀŋĵ  
'ŪÇŌ'ŌâìàµçĀ'Í<sup>o</sup>·ŌÇŌă<sup>é</sup>

'Ūà<sup>3/4</sup>ŌèĀàµŌĀ...

Ø [ă<sup>é</sup> DualHead Clone](#)

Ø [ă<sup>é</sup> DualHead DVDMax](#)

Ø [·ŌèàĀ×Í;µèŌ§ æ çÍ§ Zoom](#)

## “ÍÀÒ¾ËÄÒÂ”ÍçÍ\$ DualHead

àÅ×Í;»ØèÁ¹Õéà¾×èì¾ÒèÁ”ÍÀÒ¾”Í·Õè 2 ãËéá;èà´Ê;ì·çí»çÍ\$ÇÒ¹â  
´ÇÊì ”ÍÀÒ¾”Í·Õè 2 ÍÒ”à»ç¹”Í×ÍÁ¾ÒÇàμÍÃìáºº·Õèãé;Ñ¹ (CRT) ,”Íáº¹ ,  
TV ËÃ×Í VCR

;ÒÃãéËÃ×ÍäÁèãé;Òà”ÍÃì¹Õé ”Óà»ç¹μéÍ\$ restart ×ÍÁ¾ÒÇàμÍÃì  
»ØèÁ¹ÕéãéäÁèä´éã¹ÇÒ¹â´Çì 95 (ÇÒ¹â´Çì 95  
äÁè«Ñ¾¾ÍÃìμ”ÍÀÒ¾ËÄÒÂ æ ”Í)

´éÇÃ;Òà”ÍÃì¹Õé ÇÒ¹â´ÇÊìãé Matrox graphics card  
ÃÒÇ;ÑºÇèÒÃÑ¹ÃÕ graphics card áÂ;Ñ¹ 2 ÍÑ¹ ãéÇÒ¹â  
´ÇÊì×Çº×ØÁ;ÒÃ»ÃÑº;ÒÃμÓ´μÑés”ÍÀÒ¾”Í·Õè 2 ÊÓËÑº  
çéÍÁÛÀ¾¾ÒèÁàμÓÁà;ÒèÂÇ;Ñº mode áÊ´\$ÀÒ¾ËÄÒÂ”Í â»Ã´´Ù·Õè  
help çÍ\$ÇÒ¹â´ÇÊì 98/2000 ÀÒÃμÉËÇçéÍ "Multiple display support"  
´Ùà¾ÒèÁàμÓÁ...

∅ [“ÍÀÒ¾ËÄÒÂ”ÍçÍ\\$ DualHead \(Limitations\)](#)

## “ÍÀÒ¾ÄÄÒÄ”ÍçÍŞ DualHead (Limitations)

ÁÕçéí“Ó;Ñ´à;ÕèÄÇ;Ñº¿Òà“ÍÀìçÍŞ DualHead Multi-Display çéí“Ó;Ñ´àÈÄèÒ¹ÕéÁÕ¼Åµèí“ÍÀÒ¾“Í·Õè 2 à·èÒ¹Ñé¹

n µØ³ÈÒÁÒÄ¶àÀ×Í;á¼è¹¼ÉÁÊÕ 16 ÈÃ×Í 32 °Ô·à·èÒ¹Ñé¹

n ¿Òà“ÍÀì Matrox zoom (PixelTOUCH) ã²éäÁèä´é

n àÁéÒÈì¾éíÀàµíÀì¶Ù;ÁÒ;â´Á«Í¿·ìáÇÄì  
àÁéÒÈì¾éíÀàµíÀìÍÒ“ÁÒºÈÄÕèÈÃ×ÍÈÒÄã»ç³Ð·ÕèÄÑ¹ÍÀÙèä¹à¹×éí·  
ÕèçÍŞ“ÍÀÒ¾à¹×éíŞÁÒ“Ò;¿;ÒÄÁÒ;ÍÒ;µÄÑéŞÍÀèÒŞÄÇ´àÄÇÇ Windows  
2000 -- ´éÇÄ Windows àÇÍÀì²Ñè¹¹Õé µÑÇ²Õé  
çÍŞàÁÒÈì“Ð¶Ù;ÁÒ;ä»·ÑéŞÉÁ´´éÇÄ«Í¿·ìáÇÄìº¹“ÍáÈ´Ş¼ÄÈÄÑ;áÄÐÄÍŞ  
çÍŞµØ³

n “ÍÀÒ¾“Í·Õè 2 ÍÒ“ÁÒÍÑµÄÒµÇÒÁÄÐàíÒÄ´çÍŞ“ÍÀÒ¾ÈÙŞÈØ´áÄÐ;ÒÄ  
refresh ÈÙŞÈØ´µèÓ;ÇèÒ“ÍÀÒ¾ÈÄÑ;

n ;ÒÄàÄè¹«éÓçÍŞàµ×èíŞÇÒ´Õáí´Ô“ÔµíÁÍÒ“¶Ù;“Ó;Ñ´

n ;ÒÄáÈ´Ş¼ÄçÍŞ“ÍÀÒ¾ÈÄÑ;ÍÒ“Á´ÁŞÍÀèÒŞ²éÒ

n äÁèÈ¹ÑºÈ¹Ø¹â»Äá;ÄÁ Sonnetech **Colorific** áÄÐÈÒ;ÄØè¹çÍŞ  
Matrox PowerDesk çÍŞµØ³ÁÒÄÒÄÄÐàíÒÄ´µØ³ÉÁºÑµÔçÍŞÈÖ  
ÄÒÄÄÐàíÒÄ´µØ³ÉÁºÑµÔ¹Õé“Ðã²éäÁèä´é

n Windows 98 -- äÁèÇèÒ“Ðã²éá¼è¹ÇŞ“ÄÈÃ×íä´ÁàÇÍÀìáÈ´ŞÀÒ¾ã´  
Windows àÇÍÀì²Ñè¹¹Õé“ÐÈ¹ÑºÈ¹Ø¹à©¾¼ÒÐµÑÇàÄèŞ OpenGL  
àÁ×èíá²éÄèÇÁ;Ñº;ÒÄáÈ´Ş¼ÄÈÄÑ;çÍŞµÍÁ¾ÒÇàµíÀìçÍŞµØ³

n µÇÒÁ“ÓçÍŞ;ÄÒ¿¿Ôµ¶Ù;áºèŞÍÍ;ÍÀèÒŞà·èÒ æ  
;Ñ¹ÄÐÈÇèÒŞ“ÍÀÒ¾ÈÄÑ;áÄÐ“ÍÀÒ¾“Í·Õè 2 µÑÇÍÀèÒŞà²è¹  
ÈÒ;µØ³ÁÒ;ÄÒ¿¿Ôµ;ÒÄì´ 16 MB “ÍÀÒ¾ÈÄÑ;áÄÐ“ÍÀÒ¾“Í·Õè 2  
áµèÄÐ“ÍÀÒ 8 MB·Õèã²éä´é à»ç¹¼ÄãÈÈµÇÒÁÈÒÁÒ¶¶  
çÍŞ“ÍÀÒ¾ÁÒÈÙŞÈØ´

n Windows 98 -- à¾ÄÒÐçÕ“Ó;Ñ´çÍŞ Windows àÇÍÀì²Ñè¹¹Õé  
µØ³ÉÁºÑµÔ “ÍáÈ´ŞÀÒ¾ÈÄÒÄ“ÍçÍŞ DualHead  
ÍÒ““ÐäÁè·ÓŞÒ¹ÈÒ;ÁÒ;ÒÄµÔ  
´µÑéŞá¼è¹ÇŞ“Ä;ÄÒ¿Ô;ÈìÁÒ;¿ÇèÒÈ¹ÒèŞá¼è¹ã¹µÍÁ¾ÒÇàµíÀì  
çÍŞµØ³ (á¼è¹ÇŞ“Ä;ÄÒ¿Ô;ÈìÍÒ“µÔ  
´µÑéŞº¹á¼è¹ÇŞ“ÄÈÄÑ;çÍŞµÍÁ¾ÒÇàµíÀì  
µØ³ÈÒÁÒ¶¶ÈÑèŞãÈéá¼è¹ÇŞ“Ä;ÄÒ¿Ô;Èì·ÕèíÀÙèÀÒÄã¹àµ×èíŞ·ÓŞ  
Ò¹ÈÃ×íäÄè·ÓŞÒ¹;çä´é)

n Windows 2000 -- Windows àÇÍÃìªÑè¹¹Õé»¯ÔºÑµÔ;Ñº"ÍáÊ  
´§¼ÅËÃÑ;áÅÐÃÍ§çÍ§á¼è¹Ç§"Ã;ÃÒ;Ô;Êì·ÕèÊ¹ÑºÊ¹Ø¹ DualHead  
ÇèÒà»ç¹"ÍáÊ´§¼Åà´ÕèÂÇ («Õè§ä´ÃàÇÍÃì"ÍáÊ´§¼Å Matrox  
áºè§ÃÐËÇèÒ§"ÍÁÒ¾ 2 "Í) ¼Å·Õèä´éæ×Í "ÍáÊ  
´§¼ÅàËËèÒ¹Ñé¹ÃÑ;ãºéÃÐ´ÑºæÇÒÁæÁªÑ´áÅÐ;ÒÃ"Ñ  
´µÑé§;ÅØèÁËËà´ÕÂÇ;Ñ¹ ¹Í;"Ò;¹Ñé¹ µÓáË¹è§·ÕèÁÍ§àËÇ¹"ÃÔ§  
çÍ§"ÍáÊ´§¼ÅàËËèÒ¹Õéã¹à´Ê;ì·çÍ» Windows  
çÍ§æØ³ÃÑ;ÇÒÍÁÙèã;Áé æ ;Ñ¹àÊÁÍ



## ¡ÒÃ"Ñ´μÑές"ÍáÊ´§ÀÒ¾ËÀÒÂ"Í

κΆÔ¡»ØèÁ¹Õέà¾×èÍ»ÃÑº¡ÒÃ"Ñ´μÑές"ÍáÊ´§¼ΆËÀÒÂ"ÍϕÍ§ DualHead  
ÊÓËÃÑºàÇÍÃì²Ñè¹ºÒ§àÇÍÃì²Ñè¹ϕÍ§ Windows

»ØèÁ¹Õέ"Ð·Ó§Ò¹¡çμèÍàÁ×èÍ²éÃèÇÁ¡ÑºàÇÍÃì²Ñè¹ºÒ§àÇÍÃì²Ñè¹ϕÍ§  
Windows áΆÐϕ³Ð·ÒèàΆ×Í¡»ØèÁ"ÍáÊ´§¼ΆËÀÒÂ"ÍϕÍ§ **DualHead**

´Ùà¾ÒèÁàμÔÁ...

Ø ["ÍÀ¾ËÀÒÂ"ÍϕÍ§ DualHead \(Limitations\)](#)

## κΟί,Ô°ÔÂ mode

<sup>1</sup>Õèκ×ίκΟί,Ô°ÔÂçÍ§ mode ·ÕèàÅ×Í;ãªéÍÂÙè»Ñ´´∅°Ñ<sup>1</sup>

## ã<sup>ä</sup>é DualHead Clone

·ÓãËé;ÅèíµÃÇ¨Êí°ÊÔÁÒÃ¶´ÙÊÓà¹Òçí§¨ÍÀÒ¾ÄÃÑ;º¹¨ÍÀÒ¾¨Í·Õè 2 ä´é

;ÅèíµÃÇ¨Êíº¹Õéã<sup>ä</sup>éä´éàÁ×èíàÅ×Í;»ØèÁ **DualHead Clone** ,  
**DVDMax** ËÃ×Í **Zoom**

## ãé DualHead DVDMax

·ÖãËé;ÅèíµÃÇ·Êí°ÊÒÁÒÃ¶àÀè¹ÇÕ´Õâí´Ô´ÔµíÃã¹ÇÕ¹â  
´Çí°¹·ÍÀÒ¾ËÃÑ;ä´é áÅÐç³Ðà´ÕÃÇ;Ñ¹;çÊÒÁÒÃ¶´ÙÇÕ´ÕâíàµçÁ´í°¹  
TV ·Õèµèí;Ñº Matrox graphics card ä´é

¿Õà´´ÍÃ¹Õé¶Ù;ãéàÁ×èí (1) àÁ×í;»ØèÁ **DualHead**

**Clone ,DVDMax ËÃ×Í Zoom** (2) ;ÅèíµÃÇ·Êí°¹Õéãéä´é (3) TV  
ËÃ×Í VCR µèí;Ñº·ÍÀÒ¾·Í·Õè 2 °¹ Matrox graphics card (4) ;ÒÃµÔ  
´µÑé§·ÍÀÒ¾·ÕèãéíÁÙè (κÇÒÁÅÐàíÕÁ´áÅÐá¼è¹¼ËÁËÕ)  
äÁèËÙ§à;Ô¹ä» (5) ¿Õà´´ÍÃ¹ DualHead Zoom äÁèä´éãéä¹·Ñ¹·Õ áÅÐ  
(6) àÀè¹ÇÕ´Õâí´Ô´ÔµíÃ·Á;ÒÃãé¿Õà´´ÍÃ¹;ÒÃÇÒ§·Ñºçí§ÇÕ´Õâíçí§  
Matrox graphics card â»Áá;ÃÁàËÁèÒ¹Õéãé¿Õà´´ÍÃ¹;ÒÃÇÒ§·Ñº  
ÃÇÁ¶Ö§ Microsoft Media Player , Zoran SoftDVD áÅÐâ»Áá;ÃÁí×è¹ æ  
ãé ActiveMovie ËÃ×Í DirectX Media

¿Õà´´ÍÃ¹ÕéäÁè·Ó§Ò¹ÁèÇÁ;Ñº;ÒÃàÀè¹ÇÕ´ÕâíÁéí¹;ÃÑº´éÇÁ;ÒÃãé  
hardware-based compressor/decompressor ÍÁèÒ§äÁ;çµÓÁ  
;ÒÃàÀè¹ÇÕ´ÕâíàµçÁ´´ÍÑµâ¹ÁÑµÔ¹·ÕÇÕÍÒ´´ãéä  
´éµèÒ§ËÖ; µÑÇÍÁèÒ§àè¹ ¿Õà´´ÍÃ¹Õéä  
´éÃÑº«Ñ¾¾ÍÃ¹µµèÒ§ËÖ;´éÇÁ;ÒÃàÀè¹ÇÕ´Õâí MJPEG çí§;ÒÃí´á;éä  
çÇÕ´Õâí Matrox Rainbow Runner G-Series

;ÅèíµÃÇ·Êí°¹Õéãéä´é àÁ×èíàÁ×í;»ØèÁ **DualHead**

**Clone ,DVDMax ËÃ×Í Zoom**

´Ùà¾ËèÁàµÔÁ...

Ø [DualHead DVDMax -- κÓá¹Ð¹Ó](#)

## ·ΌξάΑ×ί;μèΌξ æ ϕίξ Clone

κΆÔê;»ØèÁ<sup>1</sup>Õéà<sup>3/4</sup>×èí»ÃÑ<sup>º</sup>Í<sup>3/4</sup>Ñè<sup>1</sup>ϕίξ DualHead Clone

»ØèÁ<sup>1</sup>Õéã<sup>ä</sup>éä´éàÁ×èíàÁ×ί;»ØèÁ **DualHead Clone ,DVDMax**  
**ËÃ×ί Zoom** áΆĐ;ΆέίξμÃÇ´´**ÉÍº Use DualHead Clone** ã<sup>ä</sup>έξÒ<sup>1</sup>ä´é

## ·ÒşàÅ×Í;µèÒş æ çÍş DVDMax

κÅÔê;»ØèÁ<sup>1</sup>Õéà<sup>3/4</sup>×èÍ»ÃÑ<sup>º</sup>ÍÍ<sup>3/4</sup>Ñè<sup>1</sup>çÍş DualHead Clone

»ØèÁ<sup>1</sup>Õéã<sup>ä</sup>éä´éàÁ×èlàÅ×Í;»ØèÁ **DualHead Clone ,DVDMax**  
**ËÃ×Í Zoom** áÅĐ;ÅèÍşµÃÇ´´ÉÍº **Use DualHead Clone** ã<sup>ä</sup>éşÒ<sup>1</sup>ä´é

´Ùà<sup>3/4</sup>ÔèÀµÔÁ...

ø [DualHead DVDMax -- κÓá<sup>1</sup>Đ<sup>1</sup>Ó](#)

## DualHead DVDMax -- αΟά¹Đ¹Ó

ÀÒ¾·Õè»ÃÒ; ̄¹â·Ã·ÑÈ¹íÒ ̄ ̄Ù;íÑ´ ̄éÒà;³±ííÑµÃÒÈèÇ¹çíŞÇÔ  
´ÕáíäÁèµÃŞ;Ñ²à;³±ííÑµÃÒÈèÇ¹çíŞâ·Ã·ÑÈ¹ ã¹;ÒÃá;é»ÑÈÒ¹Õé: (1)  
αΑÔ; **µÑÇàΑ×Í; DVDMax**, (2) àΑ×Í; **ÃÑ;ÉÒà;³±ííÑµÃÒÈèÇ¹** (3)  
àΑ×Í;à;³±ííÑµÃÒÈèÇ¹çíŞâ·Ã·ÑÈ¹ TV (4:3 ÈÃ×Í 16:9 --  
ÍÑµÃÒÈèÇ¹ÈèÇ¹ãÈèçíŞâ·Ã·ÑÈ¹α×Í 4:3) (4) àΑ×Í;**µÃÇ´â´Ããéç¹Ò**  
**´ÇÔ¹â´ÇìçíŞÇÔ´Õáí** áΑĐ (5) αΑÔ; **OK** ÈÃ×Í **Apply**  
à¾×èíãÈé;ÒÃà»ÃÕè¹á»ΑŞà;Ô´¼Å

## ·ØšàÅ×Í;µèØš æ çÍš Zoom

κÅÔê;»ØèÁ<sup>1</sup>Õéà<sup>3/4</sup>×èí»ÃÑ<sup>º</sup>Í<sup>3/4</sup>Ñè<sup>1</sup>çÍš DualHead Zoom

»ØèÁ<sup>1</sup>Õéã<sup>æ</sup>éä´éàÁ×èlàÅ×Í;»ØèÁ **DualHead Clone ,DVDMax**  
**ËÃ×Í Zoom**

**ËÁÔÀèËµØ: ã<sup>1</sup> mode DualHead Clone ,DVDMax ËÃ×Í Zoom**

κØ<sup>3</sup>ËÒÁÒÃ¶·ÓãËé;Õà´ÍÃì DualHead Zoom ·ÓšÒ<sup>1</sup>ËÃ×ÍäÁè·ÓšÒ<sup>1</sup>  
´éÇÃÍ·κÕÃì Matrox PowerDesk ·ÕèκØ<sup>3</sup>;ÓË<sup>1</sup>´ κÇÒÁÅÐàíÕÃ  
´ã<sup>æ</sup>éËÓËÑ<sup>º</sup>´ÍÀÒ<sup>3/4</sup>´Í·Õè 2 ÍÃÙè<sup>º</sup>1<sup>3/4</sup>×é<sup>1º</sup>Ò<sup>1</sup>çÍšκÇÒÁËÒÁÒÃ¶ã<sup>1</sup>;ÒÃáË  
´š<sup>1/4</sup>ÅËÙšËØ´çÍš´ÍÀÒ<sup>3/4</sup>´Í·Õè 2 áÅÐç<sup>1</sup>Ò  
´çÍš<sup>3/4</sup>×é<sup>1</sup>·Õè«ÙÁ·ÕèκØ<sup>3</sup>àÅ×Í;<sup>º</sup>1´ÍÀÒ<sup>3/4</sup>ËÃÑ; ;Õà´ÍÃì´Ð<sup>3/4</sup>ÃÒÁÒÃã<sup>æ</sup>éκ  
ÇÒÁÅÐàíÕÃ´·Õè«Ñ<sup>3/4</sup>4ÍÃìµãËéãËè;ÇèÒ (â´Áà©<sup>3/4</sup>ÒÐÍÃèÒšÃÔèš  
κÇÒÁÅÐàíÕÃ´·Õèã<sup>æ</sup>éä´éËÙš;ÇèÒã<sup>1</sup>κÃÑéšµèíã»)   
<sup>3/4</sup>×é<sup>1</sup>·Õè«ÙÁ·Õè¶Ù;àÅ×Í; ¶éÓ;Õà´ÍÃì¶Ù;·ÓãËéã<sup>æ</sup>éκÇÒÁÅÐàíÕÃ  
´´ÍÀÒ<sup>3/4</sup>·ÕèàÅç;çèÒ<sup>3/4</sup>×é<sup>1</sup>·Õè«ÙÁ·Õè¶Ù;àÅ×Í; ;ÒÃ»ÃÒ;<sup>-3/4</sup>×é<sup>1</sup>·Õè«Ù  
Á<sup>º</sup>´ÍÀÒ<sup>3/4</sup>´Í·Õè 2 ÍÒ´´ÐãÀè´Õ (ÃÒÃÅÐàíÕÃ´çÍšÃÒ<sup>3/4</sup>ÍÒ´¶Ù;<sup>º</sup>Ò´à<sup>º</sup>×Í<sup>1</sup>)

´Ùà<sup>3/4</sup>ÔèÀàµÔÁ...

ø [DualHead Zoom -- çÕ´´Ó;Ñ´](#)



## DualHead Zoom -- çÕ´´Ó;Ñ´

æØ³ÊÁºÑµÔ DualHead Zoom ¨ĐäÁèáÊ´şÀÒ¾¼ÃĐºº´Ô¨ÔµíÅ  
«Öèş;ÓÃÑşã²éæØ³ÊÁºÑµÔ;ÒÃ«é¹ÀÒ¾¼çÍşá¼è¹Çş¨Ã;ÃÒ;Ô;Êì Matrox  
â»Ãá;ÃÁ;ÒÃàÁè¹«éÓçÍşÇÔ´Õâí¨Ó¹Ç¹ÁÒ;ã²éæØ³ÊÁºÑµÔ;ÒÃ«é¹ÀÒ¾¼  
´Ñş;ÁèÒÇ ËÖ;æØ³ÊÁºÑµÔ DualHead Zoom  
¶Û;ã²é¹¾¼×é¹·Õè·Õèã²é;ÒÃ«é¹ÀÒ¾¼¨Ò;ÎÒÃì´áÇÃì¾¼×é¹·Õè  
´Ñş;ÁèÒÇ¨Đ»ÃÒ;¨à»ç¹ÊÕàçéÁº¹;ÒÃáÊ´şÀÒ¾¼ÃÍşçÍşæØ³

## ¡ÒÃµÔ´µÑές·ÕÇÕ

κÃÕ;»ØèÁàËÀèÒ¹Õéà¾¼×èÍ»ÃÑº;ÒÃµÔ´µÑές TV output ã¹ÃÐ´Ñº·ÕèËÛ§çÖé¹

n **DVDMax TV Settings** -- κÃÔê;»ØèÁ¹Õéà¾¼×èÍ»ÃÑº;ÒÃµÔ´µÑές TV output ã¹ÃÐ´Ñº·ÕèËÛ§çÖé¹ËÓËÃÑº;Õà´´ÍÀ DualHead DVDMax ;ÒÃµÔ´µÑές default DVDMax TV ¶Û;»ÃÑºËÓËÃÑº;ÒÃ´ÛÇÕ´ÕáìµçÁ´´ (µÑÇÍÀèÒ§à²è¹´´Ò;çÕ´Õáìä;Áì)

n **Desktop TV Settings** -- κÃÔê;»ØèÁ¹Õéà¾¼×èÍ»ÃÑº;ÒÃµÔ´µÑές TV output ã¹ÃÐ´Ñº·ÕèËÛ§çÖé¹·ÑèÇ æ ä» ;ÒÃµÔ´µÑές;Õà´´ÍÀèËÀèÒ¹Õéκ×Í DualHead Multi-Display ,DualHead Clone ËÃ×Í DualHead Zoom ;ÒÃµÔ´µÑές default desktop TV ¶Û;»ÃÑºËÓËÃÑº;ÒÃ´ÛκÍ¾¼ÔÇàµÍÀ;ÃÒ;ÿÔκ (µÑÇÍÀèÒ§à²è¹ à;ÁËìκÍ¾¼ÔÇàµÍÀ ËÃ×Í ÇÔ¹â´ÇËèà´Ë;ì·çÍ») »ØèÁàËÀèÒ¹Õéã²éä´é¶éÒ´´ÍÀÒ¾¼´´·Õè 2 à»ç¹ TV ËÃ×Í VCR

**ËÁÒÀèËµØ:** ËÒ;κØ³à»ÃÕèÁ¹κèÒçÍ§ËÑÒ³Í;çÍ§â·Ã·ÑÈ¹ËÓËÃÑºκØ³ËÁºÑµÔçÍ§ DVDMax κèÒàËÀèÒ¹Õé´Ð¹ÓÁÒã²éä´éà©¾¼ÒÐàÁ×èÍκØ³;ÓÃÑ§ã²éκØ³ËÁºÑµÔ¹Õéà·èÒ¹Ñé¹ËÒ;äÁèÁÕ;ÒÃã²éκØ³ËÁºÑµÔ DVDMax κèÒçÍ§ËÑÒ³Í;çÍ§â·Ã·ÑÈ¹ìáººà´Ë;ì·çÍ»´Ð¶Û;¹ÓÁÒã²éä·¹

## **κÇÒÁÅÐàíÕÃ´ÍÑ¹·Õè 2ÈÙŞÊØ´**

¶èÒ´´ÍÀÒ³⁄₄´´Í·Õè 2 à»ç¹´´ÍκÍÁ³⁄₄ÔÇàµíÃìáºº non-Plug-and-Play  
 ã²é;Åèí§¹Õéà³⁄₄×èíáÊ´§ÇèÒκÇÒÁÅÐàíÕÃ´´çí§´´ÍÀÒ³⁄₄ÈÙŞÊØ  
 ´·ÕèκØ³ÈÒÁÒÃ¶ã²é;Ñº´´ÍÀÒ³⁄₄´´Í·Õè 2 (κÇÒÁÅÐàíÕÃ´´ÈÙŞÊØ´·Õè¹Ø-  
 ÒµãËéàÃ×Í;κ×ÍκÇÒÁÅÐàíÕÃ´´ÈÙŞÊØ´´çí§ Matrox graphics card  
 ·Õè«Ñ³⁄₄³⁄₄ÍÃìµ´´ÍÀÒ³⁄₄´´Í·Õè 2 - 1280x1024) κÇÒÁÅÐàíÕÃ  
 ´¹Õé¶Û;ã²é;Ñº;Õà´´ÍÃì DualHead Clone ËÃ×Í DualHead Zoom

¶èÒ´´ÍÀÒ³⁄₄´´Í·Õè 2 à»ç¹´´ÍκÍÁ³⁄₄ÔÇàµíÃìáºº Plug-and-Play (DDC)  
 κÇÒÁÅÐàíÕÃ´´çí§´´ÍÀÒ³⁄₄ÈÙŞÊØ´¶Û;í;ÓË¹´â  
 ´ÁÍÑµâ¹ÁÑµÔâÅÐκÇÒÁÅÐàíÕÃ´´¹Ñé¹¶Û;áÉ´§·Õè¹Õè

**κÓàµ×Í¹** ¶èÒ´´ÍÀÒ³⁄₄´´Í·Õè 2 à»ç¹´´ÍκÍÁ³⁄₄ÔÇàµíÃìáºº non-Plug-and-  
 Play áÅÐκÇÒÁÅÐàíÕÃ´´çí§´´ÍÀÒ³⁄₄ÈÙŞÊØ  
 ´¶Û;àÃ×Í;·Õè¹ÕèÈÙŞ;ÇèÒ´´ÍÀÒ³⁄₄´´Í·Õè 2 ·ÕèÈÒÁÒÃ¶«Ñ³⁄₄³⁄₄ÍÃìµä´é  
 ´´ÍÀÒ³⁄₄´´Í·Õè 2 ÍÒ´´à»ç¹;ÒÃºÔ´àº×Í¹ËÃ×ÍäÁèàκÃºÔ¹àÁ×èí;Õà´´ÍÃì  
 DualHead ã²éκÇÒÁÅÐàíÕÃ´´¹Ñé¹

## **ÃÑ;ÈÛ;ÒÃÃÕà;Ãª·Õè optimal àÁ×èlà»ç¹ä»ä´é**

ÊÓËÃÑº;Õà`ÍÃ DualHead Clone

·ÓãËé;ÃèíµÃÇ`Êíº¹ÕéÊÒÁÒÃ¶ãªéíÑµÃÒ;ÒÃÃÕà;Ãªº¹`ÍÀÒ¾ËÃÑ;·Õè ÊÛ;ÇèÒ`ÍÀÒ¾`Í·Õè 2 àÁ×èlà»ç¹ä»ä´é

ÍÑµÃÒ;ÒÃÃÕà;Ãª·ÕèÊÛ;ÇèÒÁÒ¾¼ÁµèíµÇÒÁÃÒºËÃÕè·ÕèàËç¹ä´éªÑ´¹éíÃ;ÇèÒ

ÍÑµÃÒ;ÒÃÃÕà;Ãª·Õèáµ;µèÒ;Ñ¹ÊÒÁÒÃ¶¶;ãªé¶éÒµØ³ãªéá¼è¹¼ÊÁË 16 ËÃ×í 32 ºÔ·;Ñº`ÍÀÒ¾ËÃÑ;à·èÒ¹Ñé¹

¶éÒÍÑµÃÒ;ÒÃ opimal ÃÕà;Ãª äÁèä´é¶Û;ãªé (¹Ñè¹µ×í àµÃÕÃÑ;ÃèíµÃÇ`Êíº ËÃ×íµØ³ãªéá¼è¹¼ÊÁË 8 ËÃ×í 24 ºÔ·) ·Ñés 2 `ÍÀÒ¾ãªéíÑµÃÒ;ÒÃÃÕà;ÃªàËÃ×í¹;Ñ¹-ÍÑµÃÒ;ÒÃÃÕà;Ãª·Õèãªéä´éÊÛÊØ´«Ñ¾¾ÍÃµâ´Ã`ÍÀÒ¾·Ñés 2 `Í : ¶éÒ`ÍÀÒ¾`Í·Õè 2

à»ç¹`ÍÃÍ¾¼ÔÇàµíÃíºº non-Plug-and-Play ·Ñés 2 `ÍÀÒ¾ãªéíÑµÃÒ;ÒÃÃÕà;Ãªá¹ÇµÑésáººÁÒµÃº¹ 60 Hz

¶éÒ`ÍÀÒ¾`Í·Õè 2 à»ç¹TV ËÃ×í VCR `ÍÀÒ¾·Ñés 2 ãªé;ÒÃµÔ´µÑés·ÔÇÒ ;ÒÃµÔ´µÑés·ÔÇÒÃÕµÇÒÁÃÐàíÒÃ´áÃÐÍÑµÃÒ;ÒÃÃÕà;Ãª·ÕèµèÓ;ÇèÒ;ÒÃµÔ´µÑés`ÍÃÍ¾¼ÔÇàµíÃíºº,ÃÃÁ´Ò

¶éÒ`ÍÀÒ¾`Í·Õè 2 à»ç¹TV ËÃ×í VCR `ÍÀÒ¾·Ñés 2 ãªé;ÒÃµÔ´µÑés·ÔÇÒ ;ÒÃµÔ´µÑés·ÔÇÒÃÕµÇÒÁÃÐàíÒÃ´áÃÐÍÑµÃÒ;ÒÃÃÕà;Ãª·ÕèµèÓ;ÇèÒ;ÒÃµÔ´µÑés`ÍÃÍ¾¼ÔÇàµíÃíºº,ÃÃÁ´Ò

¶éÒ`ÍÀÒ¾`Í·Õè 2 à»ç¹TV ËÃ×í VCR `ÍÀÒ¾·Ñés 2 ãªé;ÒÃµÔ´µÑés·ÔÇÒ ;ÒÃµÔ´µÑés·ÔÇÒÃÕµÇÒÁÃÐàíÒÃ´áÃÐÍÑµÃÒ;ÒÃÃÕà;Ãª·ÕèµèÓ;ÇèÒ;ÒÃµÔ´µÑés`ÍÃÍ¾¼ÔÇàµíÃíºº,ÃÃÁ´Ò

¶éÒ`ÍÀÒ¾`Í·Õè 2 à»ç¹TV ËÃ×í VCR `ÍÀÒ¾·Ñés 2 ãªé;ÒÃµÔ´µÑés·ÔÇÒ ;ÒÃµÔ´µÑés·ÔÇÒÃÕµÇÒÁÃÐàíÒÃ´áÃÐÍÑµÃÒ;ÒÃÃÕà;Ãª·ÕèµèÓ;ÇèÒ;ÒÃµÔ´µÑés`ÍÃÍ¾¼ÔÇàµíÃíºº,ÃÃÁ´Ò

¶éÒ`ÍÀÒ¾`Í·Õè 2 à»ç¹TV ËÃ×í VCR `ÍÀÒ¾·Ñés 2 ãªé;ÒÃµÔ´µÑés·ÔÇÒ ;ÒÃµÔ´µÑés·ÔÇÒÃÕµÇÒÁÃÐàíÒÃ´áÃÐÍÑµÃÒ;ÒÃÃÕà;Ãª·ÕèµèÓ;ÇèÒ;ÒÃµÔ´µÑés`ÍÃÍ¾¼ÔÇàµíÃíºº,ÃÃÁ´Ò

¶éÒ`ÍÀÒ¾`Í·Õè 2 à»ç¹TV ËÃ×í VCR `ÍÀÒ¾·Ñés 2 ãªé;ÒÃµÔ´µÑés·ÔÇÒ ;ÒÃµÔ´µÑés·ÔÇÒÃÕµÇÒÁÃÐàíÒÃ´áÃÐÍÑµÃÒ;ÒÃÃÕà;Ãª·ÕèµèÓ;ÇèÒ;ÒÃµÔ´µÑés`ÍÃÍ¾¼ÔÇàµíÃíºº,ÃÃÁ´Ò

### **µÒàµ×í¹:**

`ÍÀÒ¾¼ÃÍ¾¼ÔÇàµíÃíººÒ§àµÃ×èííÒ`äÁèÊ¹ÑºÊ¹Ø¹ÍÑµÃÒ;ÒÃÇÒ´ÀÒ¾á¹ÇµÑés 50 Hz «Òè§ãªé;Ñº;ÒÃ`Ñ´µÑésâ·Ã·ÑÈ¹ÃØâÃ»

`ÍÀÒ¾ººÒ§àµÃ×èííÒ`àËÕÃËÒÃª´é¶éÒãªéíÑµÃÒ;ÒÃÇÒ´ÀÒ¾¼¹ÕéÊÓËÃÑº¶éíÁÛÃà¾¼ÔèÃàµÔÁ â»Ã´´Ùàí;ËÒÃ`ÍÀÒ¾¶í§·èÒ¹

ÊÓËÃÑº¶éíÁÛÃà¾¼ÔèÃàµÔÁ â»Ã´´Ùàí;ËÒÃ`ÍÀÒ¾¶í§·èÒ¹

ÊÓËÃÑº¶éíÁÛÃà¾¼ÔèÃàµÔÁ â»Ã´´Ùàí;ËÒÃ`ÍÀÒ¾¶í§·èÒ¹

´Ùà¾¼ÔèÃàµÔÁ...

Ø ÃÑ;ÈÛ;ÒÃÃÕà;Ãª·Õè optimal àÁ×èlà»ç¹ä»ä´é (Limitations)

## ÃÑ;ÉÒ;ÒÃÃÕà;Ãª·Õè optimal àÁ×èlà»ç¹ä»ä´é (Limitations)

¶éÒãªé;Õà´ÍÃì DualHead Clone

´éÇÃÍÑµÃÒ;ÒÃÃÕà;Ãª·Õèáµ;µèÒ§;Ñ¹ÊÓËÃÑº´´ÍÀÒ¾¼ËÃÑ;áÃÐ´´Í·Õè 2  
´´ÍÀÒ¾¼·Ñés 2 ´´Í´ÐÃÕçéí´´Ó;Ñ´·ÕèµÓÁÁÒ´Ñ§¹Õé

n àÁéÒËè¾¼éíÃàµíÃì¶¶Ù;ÃÒ;â´Á«Í;·íáÇÃì  
à»ç¹¼ÃãËéàÁéÒËè¾¼éíÃàµíÃìíÒ´´´ÐÃÕºËÃÕèËÃ×íäÁè»ÃÒ;´  
àÁ×èíÃÑ¹ÍÃÙèã¹à¹×éí·ÕèçÍ§´´ÍÀÒ¾¼  
¹Ñé¹à»ç¹;ÒÃ¶¶Ù;ÃÒ;íÕ;µÃÑésíÃèÒ§ÃÇ´àÃçÇ (µÑÇÍÃèÒ§àªè¹ ÇÒ¹â  
´ÇìÇÕ´Õái)

n µÇÒÁÃÐàíÕÃ´´´ÍÀÒ¾¼ËÙ§ËØ´¶Ù;´´Ó;Ñ´â´ÁËÕè§·Õè´´ÍÀÒ¾¼·Ñés 2  
´´Í«Ñ¾¾¼¼ÍÃìµ

n ;ÒÃàÃè¹«éÓçÍ§àµÃ×èí§ÇÒ´Õái´Ô´ÔµíÃíÒ´¶¶Ù;´´Ó;Ñ´

n ;ÒÃáË´§¼ÃçÍ§´´ÍÀÒ¾¼íÒ´´Á´Á§íÃèÒ§ªéÒ æ

n äÁèË¹ÑºË¹Ø¹â»Ãá;ÃÁ Sonnetech **Colorific** áÃÐËÒ;ÃØè¹çÍ§  
Matrox PowerDesk çÍ§µØ³ÁÕÃÒÃÃÐàíÕÃ´´µØ³ËÁºÑµÔçÍ§ËÕ  
ÃÒÃÃÐàíÕÃ´´µØ³ËÁºÑµÔ¹Õé´´ÐãªéãÁèä´é

»ØèÁÃÑ´

κΑÔêj»ØèÁ¹Õéà¾¼×èí;ÓË¹´ËÃ×Íà»ΑÕèÂ¹·ÒςΑÑ´ϕÍςκÕÂìοíÃì  
´ÊÓËÃÑº;Õà´´ÍÃìµèÒς æ ϕÍς Matrox PowerDesk άΑΔÍêÍ¾¼ªÑè¹µèÒς æ

## μΟΑ´έÇÀÁéÒÈì¾είÀμíÀì

ÊÓËÃÑº; Õà´´ÍÀì DualHead Zoom ·ÓãËé; ÅèíμÃÇ´´ÊíºÊÒÁÒÃ¶ãéä  
´έ¶έÒπØ³μέί§; ÒÃà¹×εί·Õè«ÙÁã¹´´ÍÀÒ¾´´Í·Õè 2 ãËémÒÁ  
´έÇÀÁéÒÈì¾είÀμíÀìã¹´´ÍÀÒ¾ËÅÑ;

### ¾ x é¹ · Õ è « Ù Á · Õ è Ñ Ò ° à Ñ Õ Â °

Ê Ó Ë Ñ Ñ ° ; Õ à " Í Ñ Ì DualHead Zoom · Ó ã Ë é ; Å è Í μ Ñ Ç " Ê Í ° Ê Ò Á Õ Ñ ¶ ã à é § Ò ¹ ä  
´ é ¶ é Ò × Ø ³ μ é Í ; Ò Ñ ã Ë é ; Ò Ñ ; Ñ Í § á ° ° ´ Ô " Ô μ Í Ñ ã à é ; Ñ ° ; Ò Ñ » Ñ Ò ; ~  
ç Í § à ¹ × é Í · Õ è « Ù Á ° ¹ " Í Ñ Ò ¾ ¼ " Í · Õ è 2  
; Ò Ñ ; Ñ Í § " Ð » Ñ Ò ; ~ ã Ë é à Ë ç ¹ × Ç Ò Á à Ñ Õ Â ° ; Ç è Ò á Å Ð ´ Õ Ê Ó Ë Ñ Ñ ° ; Ò Ñ ã à é ã ¹  
ç ³ Ð · Õ è ; Ò Ñ « Ù Á â ´ Ñ ã Á è Ñ Ñ ; Ò Ñ ; Ñ Í § " Ð à Ë Á Ò Ð Ê Á ; Ç è Ò ã ¹ ; Ò Ñ á ; é ä ç Ñ Ò ¾ ¼



à;³±ìíÑμÃÖÈèÇ¹

ÊÓËÃÑº;Õà"ÍÃ DualHead DVDMax

ã²éã¹;ÒÃαÇºαØÁà¾×èlàÅ×Í;ÇèÒαØ³μείξ;ÒÃãËéçÕ´Õ´í  
´Ô´ÔμίÅ¶Û; resized ¹"ÍÀÒ¾"Í·Õè 2 (TV ËÃ×Í VCR)

´Ùà¾ÔèÁàμÔÁ...

Ø [DualHead DVDMax -- αÓά¹Ð¹Ó](#)

## Αὐτὸ ἔστιν ὁ μὲν ἰσχυρὸς ἰσχυρῶς

ἄλλοι δὲ λέγουσιν ὅτι ἡ ἐξουσία ἐστὶν ἡ ἐξουσία τοῦ Θεοῦ καὶ τοῦ Χριστοῦ, ὁ ὅτι ἡ ἐξουσία ἐστὶν ἡ ἐξουσία τοῦ Θεοῦ καὶ τοῦ Χριστοῦ, ὁ ὅτι ἡ ἐξουσία ἐστὶν ἡ ἐξουσία τοῦ Θεοῦ καὶ τοῦ Χριστοῦ.

Ἡ ἐξουσία ἐστὶν ἡ ἐξουσία τοῦ Θεοῦ καὶ τοῦ Χριστοῦ, ὁ ὅτι ἡ ἐξουσία ἐστὶν ἡ ἐξουσία τοῦ Θεοῦ καὶ τοῦ Χριστοῦ, ὁ ὅτι ἡ ἐξουσία ἐστὶν ἡ ἐξουσία τοῦ Θεοῦ καὶ τοῦ Χριστοῦ, ὁ ὅτι ἡ ἐξουσία ἐστὶν ἡ ἐξουσία τοῦ Θεοῦ καὶ τοῦ Χριστοῦ.

## ÃÑ;ÉÒà;³±ìíÑµÃÒÊèÇ¹

àÅ×í;»ØèÁ¹Õέ¶έÒϣØ³µέíς;ÒÃà;³±ìíÑµÃÒÊèÇ¹·ÕèÁÒϕίςÇÕ´Õâí  
´Ô´´ÔμίÃà¾×èí»;»έίςàÁ×èί¶Û;άÊ´§¼Å<sup>ο1</sup>´´ΙΑÒ¾ÊÓÃίς (TV ÈÃ×ί VCR)

¶έÒàÅ×í;»ØèÁ¹ÕέάÅÐà;³±ìíÑµÃÒÊèÇ¹·ÕèÁÒϕίςÇÕ´Õâí  
´Ô´´ÔμίÃäÁèàÈÁ×ί¹´´ΙΑÒ¾´´Í·Õè 2 àÊέ¹ϕίºÊÕ´Ó´Ð»ÃÒ;<sup>-ο1</sup>´´ΙΑÒ¾´´Í·Õè  
2

## à;³±ìíÑμÃÒÊèÇ¹çí§·ÕÇÕ

àÅ×í;Ë¹Öè§»ØèÁ¨Ò;»ØèÀàËÀèÒ¹Õéà¾¼×èíÃÐºØà;³±ìíÑμÃÒÊèÇ¹  
çí§íØ»;Ã³ìÇÕ´Õâí (TV ËÃ×í VCR)

·ÕèæØ³;ÓÃÑšãªéÊÓËÃÑº¨ÍÀÒ¾¼ÊÓÃí§

n **4:3 (ÁÒμÃ°Ò¹)** -- ÊÓËÃÑº·ÕÇÕÁÒμÃ°Ò¹

n **16:9 (¨Í;ÇéÒ§)** -- ÊÓËÃÑº·ÕÇÕ¨Í;ÇéÒ§

¶éÒäÁèàÅ×í;»ØèÁ·Õè¶Ù;μéí§ ÇÕ´ÕâííÒ¨»ÃÒ;´á¹ÇËÃ×í squish

àÁ×èí´Ù¨ÍÀÒ¾¼¨Í·Õè 2

**ÇÔ\_Ö;ÒÃ·ÖèμÃÇ"¾ºçÍšà;³±ìíÑμÃÒÈèÇ¹**

àÅ×Í;Ë¹Öèš»ØèÁ"Ò;»ØèÀàËÀèÒ¹Öèà¾×èìàÅ×Í;à;³±ìíÑμÃÒÈèÇ¹  
çÍšÇÒ´Õáí·Öè¶Û;í;ÓË¹´äçé

n **çéíº;¾ÃèšÍÀÙèº¹¾×é¹ºÒ¹çÍšç¹Ò´·ÖèÀÒçÍšÇÒ´Õáí**  
κÇÒÁÅÐàíÕÁ´çÍš·ÖèÁÒçÍšÇÒ´Õáí;ÓË¹´à;³±ìíÑμÃÒÈèÇ¹  
μÑÇÍÀèÒšàè¹ ÇÒ´Õáí;ÑºκÇÒÁÅÐàíÕÁ´ 320x240  
ÁÕà;³±ìíÑμÃÒÈèÇ¹ 4:3

n **šÍÀÙèº¹¾×é¹ºÒ¹çÍšç¹Ò´ÇÒ¹â´çìçÕ´Õáí** ¹Ò´çÍšÇÒ¹â´çìçÕ  
´Õáíº¹"ÍÀÒ¾ËÀÑ;í;ÓË¹´à;³±ìíÑμÃÒÈèÇ¹ (â»Ãá;ÃÁàÅè¹ÇÒ  
´ÕáíËÀÒÀâ»Ãá;ÃÁÍÒ"ÃÑ;ÉÒà;³±ìíÑμÃÒÈèÇ¹çÍšÇÒ´Õáí  
áÁéàÁ×èìÇÒ¹â´çìçÕ´Õáíà»ç¹á¹Ç ã¹;Ã³èàËé¹çºËÖ´Ó"ÐáË  
´šã¹ÇÒ¹â´çìçÕ´Õáí"ÐäÁè»ÃÒ;®º¹"ÍÀÒ¾ËÓÃÍš)

## Όμιλος μνήσας ΑΔ ΝΕΥΣΤΟΕ

αέ; ΌμϑϑΑάΈΑέΌΌέά¼×έΙ»ΑΝ; ΌμΟ´μΝέσάΑΔ  
´ΝΕΥΣΕΟΕΑΝ; Όà´´ÍÀì DualHead DVDMax ; ΌμΟ  
´μΝέσάΈΑέΌΌέΑΌ¼Αμεί; ΌΑ»ΑΌ; ϑÍΣϑΌ´Όái¼´´ΙΑΌ¼´´Í·Όè 2  
à·èΌΝέ (TV ΈΑ×Í VCR)

ϑέϑϑ³ΑΌ»ΑΔΕ; ΌΑ³ì»ΝΕΌâ»Αά; ΑΑàΑέ¹ϑΌ´Όáià©¼ΌΔ  
¼ÀÀÀ»ΑΝ; ΌμΟ´μΝέσάΈΑέΌΝέ ; ΌμΟ  
´μΝέσάΈΑέΌΝέ¹àΈΑΌΔ; Νâ»Αά; ΑΑàΑέ¹ϑΌ´ΌáiÉ¹ΌèΣ  
άμείΌ´äÀèΈΑΌΔ; Νâ»Αά; ΑΑÍ×è¹ ÊÓΈΑΝϑείΑÙÀ¼ΌèÁàμΟÁâ»Α  
´´Ù context-sensitive help ÊÓΈΑΝ; ΌμϑϑΑάμèΑΔÍΝ¹

## ÃÑ;ÉÒ;ÒÃ»ÃÒ;´Í;ÁÒçÍ§-ÕèÁÒ

·ÓãËé;ÃèÍ§µÃÇ´ÉÍ°ÊÒÁÒÃ¶ãªéã¹;ÒÃµÔ´µÑés·Õè»ÃÒ;´Í;ÁÒ  
çÍ§â»Ãá;ÃÁàÃè¹ÇÕ´Õái·Ò§àÃ×Í;¹Õé·ÓãËéâ»Ãá;ÃÁÇÕ´Õái  
ÊÒÁÒÃ¶áÉ´§ÁÒ¾ÇÕ´ÕáiÁèÒ§¶Û;µéÍ§°¹´´ÁÒ¾´´Í·Õè 2 (TV ËÃ×Í  
VCR)

¶éÒ·Ò§àÃ×Í;¹Õé·ÓãËé;ÒÃáÉ´§¼ÃçÍ§;ÒÃàÃè¹ÇÕ´ÕáiÁ´Á§·Ñés;Ñº  
´»Ãá;ÃÁàÃè¹ÇÕ´Õái ÁÒ¾ÇÕ´Õái°¹´´ÁÒ¾´´Í·Õè 2  
ÍÒ´´ÃÁºµÃØÁºÒ§ÊèÇ¹ ËÃ×Í¶Û;µÑ´Í;ËÒ;ÇÔ¹â´ÇìÇÕ  
´ÕáiµÃÍºµÃØÁºÒ§ÊèÇ¹ ËÃ×Í¶Û;µÑ´Í;

# ÁÒμÃÒËèÇ¹º¹;ÒÃ´Õ´Ë¹éÒà·èÒ¹Ñé¹

;ÒÃ·ÓãËé;ÁèíσμÃÇ´´ÉíºËÒÁÒÃ¶¾Ñ²¹Ò;ÒÃáÊ´§ÀÒ¾;ÒÃàÁè¹ÇÕ´Õâí´éÇÂâ»Ãá;ÃÁàÁè¹ÇÕ´Õâí

àκÃÕÃÃì;ÁèíσμÃÇ´´ÉíºËé¶éÒÇÕ´ÕâíäÁèä´éÃÑº;ÒÃ»ÃÑº»ÃØ§ÍÁèÒ§¶Ø;μéí§º¹´´ÍÀÒ¾´´Í·Õè 2 (TV ËÃ×Í VCR) â´Áà©¾ÒÐÍÁèÒ§ÃÔè§ àκÃÕÃÃì;ÁèíσμÃÇ´´ÉíºËÒ;ÃíºÇÕ´ÕâíÍ¹áÃ;áÊ´§ÀÒ¾à·èÒ¹Ñé¹ËÃ×ÍËÒ;ÃíºÇÕ´Õâíä´éÃÑº;ÒÃ»ÃÑº»ÃØ§àÁ×èíÇÕ´ÕâíàκÃ×èí¹ä»áÁéÇà·èÒ¹Ñé¹



## Field-based scaling

Field-based scaling:  $\frac{1}{2}$  frame-based scaling

Field-based ( $\frac{1}{2}$  frame-based)  $\frac{1}{2}$  frame-based  $\frac{1}{2}$  frame-based  $\frac{1}{2}$  frame-based

NTSC PAL  $\frac{1}{2}$  frame-based

Frame-based scaling

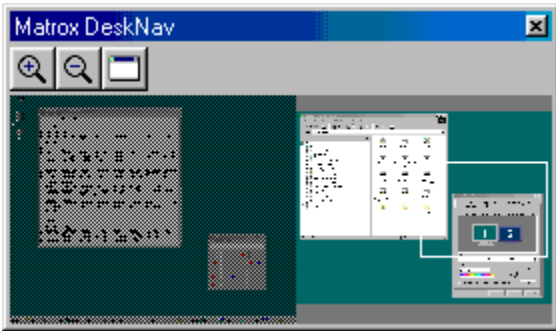
$\frac{1}{2}$  frame-based  $\frac{1}{2}$  frame-based  $\frac{1}{2}$  frame-based  $\frac{1}{2}$  frame-based

Frame-based ( $\frac{1}{2}$  frame-based)  $\frac{1}{2}$  frame-based

MPEG1)  $\frac{1}{2}$  frame-based  $\frac{1}{2}$  frame-based  $\frac{1}{2}$  frame-based  $\frac{1}{2}$  frame-based



# Matrox DeskNav



«Á»Á;Á¹Õéà¼×èì«ÙÁàçéÒ·Õè°ÃÔàÇ³à´Êì·çì»çí§ Windows  
çí§·èÒ¹ áÅÐà¼×èíÁéÒÂ°ÃÔàÇ³´ÙÀÒ¼íÁèÒ§ÃÇ´àÃçÇ  
à¼×èì·Õè°ÐàÃÔèÁµé¹ãé DeskNav ãËãéàÁ¹Ùçí§ Matrox  
QuickDesk

àÁ×èíãé;ÒÃ·´Áí§´Ùà´Êì·çì»çí§ DeskNav ·èÒ¹·ÐÊÒÁÒÃ¶ "ÊÓÃÇ"  
ç³Ðãéç³ÉÁ°ÑµÒ«ÙÁçí§ Matrox Ë×íãéà´Êì·çì»á°ËÁÒÂ°´áÊ  
´§ÀÒ¼´í·´Áí§´Ùà´Êì·çì»ÐáÊ´§ãÉé·èÒ¹àËç¹ÃÙ»çí§à  
´Êì·çì»Ñ°Ñ¹ ÆÇÁ·ÑésÊÔès·ÕèíÁÙè¹í;Ë¹éÒ´íç³Ð;ÓÃÑ§«ÙÁàçéÒ  
´éÇÁ ¶éÒ·èÒ¹ãéà´Êì·çì»á°ËÁÒÂ°´áÊ´§ÀÒ¼´í·´Áí§´Ùà´Êì·çì»çí§  
DeskNav ÐáÊ´§µÑÇíÁèÒ§çí§;ÒÃáÊ´§ÀÒ¼áµèÁÐá°ã¹ÃÐ°çí§·èÒ¹

·èÒ¹ÊÒÁÒÃ¶¶ÃÔ;Êí§¶ÃÑésµÒ´;Ñ¹·Õè°ÃÔàÇ³·´Áí§  
´Ùà¼×èíÁéÒÂµÑÇ°Õéçí§·èÒ¹ã»ÃÑ§µÓáË¹ès·Õèµéí§;ÒÃ°¹à´Êì·çì»  
ãËé¶ÃÔ;»ÐèÁàÁÒÊìçÇÒ·Õè°ÃÔàÇ³·´Áí§´Ùà¼×èíãéàÁ¹Ùà¹×éíÊÒ

ç³Ð·Õè·èÒ¹;ÓÃÑ§ãéç³ÉÁ°ÑµÒ«ÙÁ ·èÒ¹ÊÒÁÒÃ¶¶ÁéÒÂ°ÃÔàÇ³  
´ÙÀÒ¼çí§·èÒ¹ã»ã´ésèÒÂæ´éÇÁ;ÒÃ¶ÃÔ;Ë×íÁÒ;°¹´í·´Áí§´Ùà  
´Êì·çì» ÆÙ»ËÕèàËÁÒèÁ¹¼×¹¼éÒã¹´í·´Áí§´Ùà´Êì·çì»áÊ  
´§¶Ö§µÓáË¹èsçí§°ÃÔàÇ³´ÙÀÒ¼»Ñ°Ñ¹·ÕèÊÑÁ¼Ñ¹;Ñ³¼×é¹·Õèà  
´Êì·çì»çí§·èÒ¹

´Ùà¼ÔèÁàµÓÁ...

- Ø [Matrox QuickDesk](#)
- Ø [à´Êì·çì»á°ËÁÒÂ°´áÊ´§¹¼Á](#)

“Ñ´ÍÂÛè´éÒ¹º¹àÊÁÍ

à»Ô´ãªéÃÒÂ;ÒÃàÅ×Í;¹Õéà¾¼×èíãËéË¹éÒµèÒ§ DeskNav  
»ÃÒ;´ÍÂÛèàË¹×ÍË¹éÒµèÒ§í×è¹æ àÊÁÍ

## áÊ´šàÁ¹Ù

ãªéµÑÇκÇºκØÁ¹Õéà¾¼×èíáÊ´šËÃ×Í«è¹àÁ¹ÙϕÍ§ DeskNav  
·èÒ¹ÊÒÁÒÃ¶ãªéµÑÇκÇºκØÁ¹Õéä´é´éÇÂ;ÒÃκÅÔ;»ØèÁàÁÒÊì  
ϕÇÒ·Õèá¶ªª×èíϕÍ§ DeskNav

άΈ΄ςάη°àκÃ×èίςΆ×ί

ã°έμÑÇκÇ°κØÁ¹Õέα¾¼×èίάΈ΄ςËÃ×ί«èί¹άη°α×èίφίς DeskNav

**άΈ´§¾×έ¹·Õè·Άίς´Ù**

ãªέμÑÇαÇºαØÁ¹Õέα¾¾×èíaÊ´§ËÃ×Í«è¹ºÃÔàÇ³·´Άίς´Ùà´Êì·çί»φί§  
DeskNav

»ÃÑº»ÃØ§;ÒÃ·´ÁÍ§´Ù

ãªéÃÒÂ;ÒÃàÁ¹Ù¹Õéà¾¼×èÍ»ÃÑº»ÃØ§Ë¹éÒ´´Í·´ÁÍ§´Ùà´Ê;ì·çÍ»çÍ§  
DeskNav



¡ÒÃ»ÃÑºç¹Ò´ãĒĒä´éĒÑ´Ēèç¹

ꝤÅÔ;ÃÒÂ;ÒÃàÁ¹Ù¹ÕĒà¾¼×èÍ·ÓãĒĒéꝤÇÒÁ;ÇéÒşáÅĐꝤÇÒÁĒÛşçÍş´Í·´ÁÍş  
´Ùà´Ē;ì·çÍ»çÍş DeskNav ä´éĒÑ´Ēèç¹;ÑºꝤÇÒÁ;ÇéÒşáÅĐꝤÇÒÁĒÛşçÍşà  
´Ē;ì·çÍ»´ÅÔşæ çÍş·èÒ¹

## ÃÒÂ;ÒÃâ»Ã´

¸ÅÔ;ÃÒÂ;ÒÃâÀ¹Ù¹Õéà¾¼×èlà»Ô´;ÅèÍsä´ÍÐÁÍ; ÃÒÂ;ÒÃâ»Ã´ ¸Í§  
DeskNav ·èÒ¹ÊÒÁÒÃ¶ãªéµÑÇ¸Çª¸ØÁ¹Õéä´é  
´éÇÂ;ÒÃ¸ÅÔ;»ØèÁàÁÒÊìçÇÒ·Õèá¶ªª×èÍçÍ§ DeskNav

## Ē<sup>1</sup>έὸμὲὸς

κΑὸ; àÁ<sup>1</sup>Û<sup>1</sup>Ōéà<sup>3</sup>/<sub>4</sub>×èí´ÙÃÒÂ<sup>a</sup>×èÍĒ<sup>1</sup>έὸμὲὸςâ»Ãá;ÃÁ·Ōèà»Ô´ÍÂÙèã<sup>1</sup>  
ϕ<sup>3</sup>Đ<sup>1</sup>Ōé àÁ×èíμείς; ÒÃà»ÃŌèÂ<sup>1</sup>ä»·ŌèĒ<sup>1</sup>έὸμὲὸςÍ×è<sup>1</sup>  
ãĒ<sup>1</sup>έκΑὸ;<sup>a</sup>×èÍĒ<sup>1</sup>έὸμὲὸς<sup>1</sup>Ŋé<sup>1</sup>ã<sup>1</sup>ÃÒÂ<sup>a</sup>×èí àÁ×èí·èÒ<sup>1</sup>κΑὸ;<sup>a</sup>×èÍ  
Ē<sup>1</sup>έὸμὲὸςâ»Ãá;ÃÁ<sup>1</sup>Ŋé<sup>1</sup>·Đ;ÃÒÂà»ç<sup>1</sup>Ē<sup>1</sup>έὸμὲὸς·Ōèã<sup>a</sup>έςŌ<sup>1</sup>ÍÂÙè  
áÃĐμŊç<sup>a</sup>ŌέϕÍς·èÒ<sup>1</sup>;ç·ĐĀέÒĀä»ÍÂÙèμÃς;ÃÒςĒ<sup>1</sup>έὸμὲὸς<sup>1</sup>Ŋé<sup>1</sup>



## «ÙÁàçéÒ

κΆÔ;»ØèÁ<sup>1</sup>Õéà<sup>3/4</sup>×èíç·ÂÒÂÊèÇ<sup>1</sup>çÍ§ºÃÔàÇ<sup>3</sup>áÊ´§ÀÒ<sup>3/4</sup>çÍ§·èÒ<sup>1</sup>  
 ãËéκΆÔ;ÍÕ;κÃÑέ§à<sup>3/4</sup>×èíç·ÂÒÂãËèçÖé<sup>1</sup>ÍÕ; àÁ×èí·èÒ<sup>1</sup>ç·ÂÒÂºÃÔàÇ<sup>3</sup>áÊ´  
 ´§ÀÒ<sup>3/4</sup>ºØ§ËèÇ<sup>1</sup>çÍ§ºÃÔàÇ<sup>3</sup>áÊ´§ÀÒ<sup>3/4</sup>·ΔÍÁÙè<sup>1</sup>Í;ºÃÔàÇ<sup>3</sup>´ÙÀÒ<sup>3/4</sup>

ÁÕκèÒ«ÙÁÊÍ§κèÒ·Õèãéä´έκ×Í x2 áÅÐ x4 κèÒ«ÙÁ x4 ÍÒ·ãéäÁèä´  
 ´éàÁ×èíãéä·Ãâ«ÁÙºÑè<sup>1</sup>ã<sup>1</sup>;ÒÃÁÊ´§ÀÒ<sup>3/4</sup> 800 x 600 áÅÐμèÓ;ÇèÒ<sup>1</sup>Ñé<sup>1</sup>

»ØèÁ<sup>1</sup>Õé·ΔãéäÁèä´éã<sup>1</sup>;Ã<sup>3</sup>Õã´;Ã<sup>3</sup>ÕË<sup>1</sup>Õè§μèíä»<sup>1</sup>Õέκ×Í  
 ·èÒ<sup>1</sup>;ÓÃÑ§ãéκèÒ«ÙÁÊÙ§ËØ´ÍÁÙèã<sup>1</sup>ç<sup>3</sup>Ð<sup>1</sup>Õé ä´ÃàÇÍÁíáÊ´§ÀÒ<sup>3/4</sup>çÍ§  
 PowerDesk äÁèË<sup>1</sup>ÑºË<sup>1</sup>Ø<sup>1</sup>;ÒÃÁÊ´§ÀÒ<sup>3/4</sup>·ÕèàÁ×Í;äÇé  
 ËÃ×Í·èÒ<sup>1</sup>;ÓÃÑ§ãéÀÒÇÐËÑÒ<sup>3</sup>Í;â·Ã·ÑÈ<sup>1</sup>

 «ÙÁÍí;

κΆÔ;·Õè»ØèÁ¹Õéà¾¼×èí«ÙÁÍí;¨Ò;ºÃÔàÇ³  
´ÙÀÒ¾¼κΆÔ;«έÓà¾¼×èí«ÙÁÍí;ÁÒ;ÂÔèξϕÖé¹  
»ØèÁ¹Õé¨ĐäÁè»ÃÒ;¯àÁ×èí·èÒ¹ăÁèä´éă²éκØ³ÊÁºÑμÔ«ÙÁà  
ϕέÒ·ÕèÊèÇ¹ă´ÊèÇ¹Ë¹ÖèξϕÍ§à´Ê;ì·çí»ϕÍ§·èÒ¹

## CenterWINDOW

κΑÔ; àÁ¹Ù¹Õεà¾¼×εί´ÙÃÒÂª×είË¹έÒμèÒ§â»Ãá;ÃÁ·Õεà»Ô´ÍÂÙèã¹  
ϕ³Ð¹Õέ àÁ×είμεί§;ÔÃà»ÃÕèÂ¹ä»·ÕèË¹έÒμèÒ§Í×è¹  
ãËέκΑÔ;ª×είË¹έÒμèÒ§¹Ñέ¹ã¹ÃÒÂª×εί àÁ×εί·èÒ¹κΑÔ;ª×εί  
Ë¹έÒμèÒ§â»Ãá;ÃÁ¹Ñέ¹·Ð;ÃÒÂà»ç¹Ë¹έÒμèÒ§·Õèãªέ§Ò¹ÍÂÙè  
άΑÐμÑÇªÕέçÍ§·èÒ¹;ç·ÐΑέÒÂä»ÍÂÙèμÃ§;ÃÒ§Ë¹έÒμèÒ§¹Ñέ¹

## ÃÒÂ;ÒÃàÃ×Í;

ã<sup>a</sup>éµÑÇαÇ<sup>o</sup>αØÁàËÀèÒ<sup>1</sup>Õéà<sup>3/4</sup>×èíà»ÃÕèÂ<sup>1</sup>ÃÒÂ;ÒÃàÃ×Í;φÍ§ DeskNav

## αὐτὸ ἄρα

ἀλλὰ ἵππῳ ἀλλὰ ἵππῳ ὅτι ἐπὶ μέγιστον ἄρα ἔστιν ἐπιπέδον DeskNav  
ἰσότητος ὅτι ἀποδείξει ὅτι ἵππος ἄρα ἔστιν ἰσότητος ἰσότητος

ἐπιπέδον ἴσως ἔστιν ἰσότητος ὅτι ἰσότητος ἰσότητος ἰσότητος DeskNav  
ἰσότητος ἰσότητος ἰσότητος ἰσότητος ἰσότητος ἰσότητος ἰσότητος ἰσότητος  
ἰσότητος ἰσότητος ἰσότητος ἰσότητος ἰσότητος ἰσότητος ἰσότητος ἰσότητος  
ἰσότητος ἰσότητος ἰσότητος ἰσότητος ἰσότητος ἰσότητος ἰσότητος ἰσότητος



## ⌘Ⓢ DeskNav äÇéã¹; ÒÃÁÊ´§ÀÒ¾µÑÇªÕéçÍšàÁÒÈì

¶léÒ·èÒ¹; ÓÃÑšãªéà´Êì·çÍ»áººËÀÒÂªØ´áÊ´§ÀÒ¾  
ãËéàÃ×Í; ÆèÍšàÃ×Í¹Õéà¾×èìãËéË¹éÒµèÒ§ DeskNav  
ÂéÒÃä»ÃÑ§; ÒÃÁÊ´§ÀÒ¾·Õè·èÒ¹ªÕéà´ÁÍÑµâ¹ÃÑµÔ

⌘Ø³ÊÁºÑµÔ¹Õé´Ðãªéä´é; çµèíàÁ×èì·èÒ¹; ÓÃÑšãªéà  
´Êì·çÍ»áººËÀÒÂªØ´áÊ´§ÀÒ¾ áÅÐ¶léÒà»Ò´ªÕ´ÁØÁ ÍÂÙè

# ÇÒşµÑÇªÕέçÍşàÁÒÈìäÇέµÃş;ĂÒşàÁ×èìà»ĂÕèĂ<sup>13/4</sup>×é<sup>1</sup>·Õè ´ÙÀÒ<sup>3/4</sup>

àĂ×ί;ĀèÍşàĂ×ί;<sup>1</sup>Õéà<sup>3/4</sup>×èìãĔÉµÑÇªÕέçÍş·èÒ<sup>1</sup>ÍÀÙèµÃş;ĂÒş  
àÁ×èì·èÒ<sup>1</sup>;ÓĀÑşãªéπØ<sup>3</sup>ĔÁ<sup>º</sup>ÑµÔ«ÙÁçÍş Matrox  
áĂέÇĀéÒĀĔÕèàĔĀÕèĀĀ<sup>º</sup>ĂÔàÇ<sup>3</sup>´ÙÀÒ<sup>3/4</sup>çÍş´Í·´ĂÍş´Ùà´Ĕì·çÍş»çÍş  
DeskNav µÑÇªÕέçÍş·èÒ<sup>1</sup>´ĐÍĀÙèµÃş;ĂÒşã<sup>1º</sup>ĂÔàÇ<sup>3</sup>  
´ÙÀÒ<sup>3/4</sup>·Õè·èÒ<sup>1</sup>à<sup>3/4</sup>ÔèşĀéÒĀ

**¡ÒÃ»ÃÑºç¹Ò´ãĒéä´éĒÑ´Ēèç¹**

àÅ×Í;ÃÒÂ;ÒÃ;ÅèÍàÅ×Í;¹Õéà¾¼×èÍÃÑ;ÉÒ×ÇÒÁ;ÇéÒŞáÅĐ×ÇÒÁĒÛŞ  
çÍŞ´´Í·´ÁÍŞ´Ùà´Ē;ì·çÍ»çÍŞ DeskNav ãĒéä´éĒÑ  
´Ēèç¹;Ñº×ÇÒÁ;ÇéÒŞáÅĐ×ÇÒÁĒÛŞçÍŞà´Ē;ì·çÍ»´ÃÔŞçÍŞ·èÒ¹

## άΈ΄ςφείΑÙÀàΈì·çí»·Õèà;çº"Ò;Ë¹èÇÂκÇÒÁ"Ó

àΑ×ί;ÀèÍàΑ×ί¹Õéà¾×èìãËé"Í·'ÁÍς'ÙàΈì·çí»φÍς DeskNav άΈ΄ς  
"ÀÒ¾" φÍςàΈì·çí» Windows φÍς·èÒ¹

ÂéÒÁά¶ºàΑ×è¹à¾×èì»ÃÑºκØ³ÀÒ¾φÍς"Í·'ÁÍς'Ù ÀÒ¾à  
Έì·çí»·Õèà;çº"Ò;Ë¹èÇÂκÇÒÁ"Ó·ÕèÁÕκØ³ÀÒ¾ËÙςÍÒ"·ÓãËé;ÒÃ·ÓςÒ  
¹φÍςÃÐººαέÒÁς

«è¹ DeskNav ã¹çéíÁÙÀà´Êì·çí»·Õèà;çº"Ò;Ë¹èÇÂxÇÒÁ"Ó

àÅxí;ÀèíàÅxí;¹Õéà¾xèí«è¹Ë¹éÒµèÒ§ DeskNav äÇéã¹"í·´Áí§´Ùà  
´Êì·çí»çí§ DeskNav

;ÀèíàÅxí;¹Õé"Đãªéä´é;çµèíàÁxèíà»Ô´ãªé áÊ´§çéíÁÙÀà  
´Êì·çí»·Õèà;çº"Ò;Ë¹èÇÂxÇÒÁ"Ó

»ÃÑº»ÃØ§çéíÁÙÀà´Êì·çí»·ÕèàìçººÒìË¹èÇÂ×ÇÒÁ´´Óâ  
´ÁÍÑµâ¹ÁÑµÔ

àÃ×í;Áèí§àÃ×í¹Õéà¾¼×èíãËÉ DeskNav »ÃÑº»ÃØ§ÀÒ¾¼·´Áí´Ùà  
´Êì·çí»à»ç¹ÃÐÃÐæ ãËÉÁéÒÁá¶ºàÃ×èí¹à¾¼×èí»ÃÑºÇèÒ´ÐãËÉ  
DeskNav »ÃÑº»ÃØ§ÀÒ¾¼à  
´Êì·çí»·ÕèàìçººÒìË¹èÇÂ×ÇÒÁ´´ÓèíÀà¾¼ÕÂ§ã´ ;ÒÃ»ÃÑº»ÃØ§ÀÒ¾¼·  
´Áí´Ùà´Êì·çí»ºèíÁæ ÍÒ´·ÓãËÉ;ÒÃ·Ó§Ò¹çí§ÃÐºººéÒÁ§

µÑÇ×Çº×ØÁàËÀèÒ¹Õé´Ðãºéä´é;çµèíàÁ×èíà»Ô´ãºé áÊ´§çéíÁÙÀà  
´Êì·çí»·ÕèàìçººÒìË¹èÇÂ×ÇÒÁ´´Ó



¼Å"Öj

¼ÅjÖÃ·ÊÍº"ĐáÊ'šã¹jÅèš¹Öé



· 'ÊÍº à 'ÕëÂÇ¹Õé

κÅÔ;»ØèÁ¹Õéà¾¼×èí·Ó;ÒÃ· 'ÊÍº·ÕèàÅ×Í;äÇé

àÅ×í;ÿÒÃ·´Êíº·Õè·èÒ¹μέíς;ÒÃ

«ÍÀìáÇÀìDirectX ÆØè¹ãËÀèä´é¶Ù;µÔ´µÑέξάΆέÇËÃ×íäÁè?

àÀ×í;ÀèίξàÀ×í;¹Õéà¾×èì·ÉÍº«Í;µìáÇÀìφίξ Microsoft DirectX

DirectX ÆØè¹ÀèÒËØ´´Ðµείξ¶Ù;µÔ

´µÑέξäÇéà¾×èìäËÉºÒξâ»Ãά;ÃÁ·ÓξÒ¹ÍÀèÒξ¶Ù;µείξ άΑÐËÒ;äÁèä

´έµÔ´µÑέξ DirectX ÆØè¹ÀèÒËØ´äÇέ πØ³ÉÁºÑµÔºÒξ»ÃÐ;ÒÃφίξ

Matrox PowerDesk ÍÒ´ãªéäÁèä´έ

°ÑÊÁÒÊàμíÃÔς(ÊÓËÑ°μÑÇàÃèς;ÒÃáÊ´ŞÀÒ¾).ÓςÒ¹ËÃ×ÍäÁè?

àÅ×Í;ÀèÍàÅ×Í;¹Õéà¾×èí·´ÊÍ°ÑÊÁÒÊàμíÃìÃÔς

´Ùà¾ÒèÁàμÔÁ...

∅ ãé°ÑÊÁÒÊàμíÃìÃÔς

## ÁŌá¼ŒÇŌ´ŌâíMatrox Í×è¹μŌ´μÑέσίÂÙè´έÇÂĒÃ×lá»ÂèŌ?

àÅ×í;ĀèíŒàÅ×í;¹Ōéà¼×èíμÃÇ´Éí°ÇèŌÁŌá¼Œ´Ñ°ÀŌ¼ÇŌ´Ōâíçís  
Matrox ÍÑ¹Í×è¹μŌ´μÑέσίÂÙèã¹κÍÁ¼ŌÇàμίÃìçís·èŌ¹ĒÃ×láÁè  
κÍÁ¼ŌÇàμίÃìĒ¹ŌèŒàκÃ×èíŒ´ĐĒ¹Ñ°Ē¹Ō¹á¼Œ´Ñ°ÀŌ¼ÇŌ´Ōâíçís  
Matrox Ē¹ŌèŒá¼Œà·èŌ¹Ñé¹

È<sup>1</sup>èÇÂαÇÒÁ"Ó;ÃÒζÔ;Êìà<sup>3/4</sup>ÔèÁàμÔÁ(¶éÒÁÕ)  
·ÓξÒ<sup>1</sup>»;ιμÔËÃ×ÍäÁè?


àÅ×Í; ÅèÍξàÅ×Í;<sup>1</sup>Õéà<sup>3/4</sup>×èí·

´Êí<sup>º</sup>ÇèÒË<sup>1</sup>èÇÂαÇÒÁ"Ó;ÃÒζÔ;Êìà<sup>3/4</sup>ÔèÁàμÔÁ (¶éÒÁÕ) <sup>1</sup>Ñé<sup>1</sup>àφéÒä  
´é;Ñ<sup>º</sup>Ë<sup>1</sup>èÇÂαÇÒÁ"Ó<sup>º</sup>á<sup>1/4</sup>ξ;ÃÒζÔ;ÊìφÍξ·è<sup>1</sup>



## ϕείΑÛÀ¾ÔèÁàμÔÁ

---

·èÒ¹ÊÒÁÒÃ¶¾ºËÑÇϕείÇÔ, ÕãªéºÒ§ËÑÇ  
ϕεί¼èÒ¹·Ò§ÇÔ, Õãªéã¹à¹×είàÃ×εί§à·èÒ¹Ñέ¹  
ã¹ÊèÇ¹·ÕèÁÕÇÔ, Õãªéã¹à¹×είàÃ×εί§ ãËέκΑÔ;»ØèÁ " ? "  
·ÕείÀÛèº¹á¶ºª×είϕί§;Áεί§ä  
´ÍÐÁí; ¨Ò;¹Ñέ¹κΑÔ;ÃÒÁ;ÒÃ·ÕèκØ³μεί§;ÒÃÇÔ, Õãªé  
ÊÓËÑºϕείΑÛÀ¾ÔèÁàμÔÁ ãËέκΑÔ; **Matrox QuickDesk** () à  
**ÇÔ, Õãªé à ´Ùά;έÁίèÒ¹·Õè¹Õè**  
´Ùà¾ÔèÁàμÔÁ...

Ø [Matrox QuickDesk](#)



## ¡ÅøèÁËÖ

“Ó¹Ç¹ÊÖ·Õèä´ÃàÇÍÃìáÊ´§ÀÒ¾ÊÒÁÒÃ¶áÊ´§ä´é¾ÃéÍÁ;Ñ¹ “Ó¹Ç¹ÊÖ¹Õé  
çÖé¹ÍÃÙè;Ñº“Ó¹Ç¹ºÔµ·Õèäæé¹;ÒÃà;çº  
çéÍÁÙÃÊÖÊÓËÑºáµèÅÐ¾Ô;à«çÅ ÅÕè§ÁÕ“Ó¹Ç¹ºÔµËÙ§ ä´ÃàÇÍÃìáÊ  
´§ÀÒ¾;çÊÒÁÒÃ¶áÊ´§Ë¾ÃéÍÁ;Ñ¹ä´éÁÒ;çÖé¹

**ËÁÒÃàËµø:** ´éÇÃÎÒÃì´áÇÃì Matrox

µÑÇàÃè§áººÊÒÁÁÔµÔ“Ðäæé§Ò¹ä

´éà©¾ÒÐàÁ×èíææËèÇÁ;Ñº;ÅøèÁËËç¹Ò´ 16 ºÔµËÃ×í 32 ºÔµ

´Ùà¾ÒèÁàµÔÁ...

ø [Pixel](#)

## °ÃÔàÇ³Ë¹éÒ´Í

°ÃÔàÇ³§Ò¹·ÑésËÁ´çÍ§ÃÐºº»´ÔºÑµÔ;ÒÃ·ÕèáÉ´§ÍÀÙèçÍ§·èÒ¹

¶éÒ·èÒ¹;ÓÃÑ§ãªéà´Ê;ì·çÍ»áººËÃÒÃªØ´áÊ´§ÀÒ¾

¹Ñè¹ËÀÒÃªÇÒÁÇèÒºÃÔàÇ³à´Ê;ì·çÍ»çÍ§·èÒ¹ä´éÃÇÁºÃÔàÇ³áÊ

´§ÀÒ¾ÁÒ;ì;ÇèÒË¹Öè§ºÃÔàÇ³äÇé´éÇÃ ¶éÒ·èÒ¹äÁèä´éãªéà

´Ê;ì·çÍ»áººËÃÒÃªØ´áÊ´§ÀÒ¾ ¹Ñè¹ª×ÍºÃÔàÇ³à´Ê;ì·çÍ»áÃÐºÃÔàÇ³áÊ

´§ÀÒ¾çÍ§·èÒ¹à»ç¹ºÃÔàÇ³à´ÕÃÇ;Ñ¹

´Ùà¾ÔèÁàµÔÁ...

Ø ºÃÔàÇ³áÊ´§ÀÒ¾

Ø à´Ê;ì·çÍ»áººËÃÒÃªØ´áÊ´§¼Ã

## °ÃÔàÇ³áÊ´ŞÀÒ¾

°ÃÔàÇ³ŞÒ¹çÍŞ;ÒÃáÊ´ŞÀÒ¾çÍŞÃĐºº»~ÔºÑµÔ;ÒÃ·ÕèáÊ´şÍÀÙèçÍŞ·èÒ¹

¶éÒ·èÒ¹;ÓÃÑşã²éà´Ê;ì·çÍ»áººËÃÒÃ²Ø´áÊ´ŞÀÒ¾

¹Ñè¹ËÃÒÃ²ÇÒÃÇèÒºÃÔàÇ³à´Ê;ì·çÍ»çÍŞ·èÒ¹ä´éÃÇÃºÃÔàÇ³áÊ

´ŞÀÒ¾ÃÒ;çÇèÒË¹ÖèşºÃÔàÇ³äÇé´éÇÃ ¶éÒ·èÒ¹äÃèä´éã²éà

´Ê;ì·çÍ»áººËÃÒÃ²Ø´áÊ´ŞÀÒ¾ ¹Ñè¹µ×ÍºÃÔàÇ³à´Ê;ì·çÍ»áÃĐºÃÔàÇ³áÊ

´ŞÀÒ¾çÍŞ·èÒ¹à»ç¹ºÃÔàÇ³à´ÕÃÇ;Ñ¹

**ËÃÒÃ²ËµØ:** àÁ×èíµéÍŞ;ÒÃà»ÃÕèÃ¹µèÒ~Ñ´µÑéş~ÍÀÒ¾ã¹ Windows

ãËéµÃÒ;»ØèÃàÃÒËìçÇÒ·Õè¾×é¹ËÃÑşà´Ê;ì·çÍ»çÍŞ Windows çÍŞ·èÒ¹

áÃéÇµÃÒ; **Properties** à **Settings** àÁ×èíµéÍŞ;ÒÃà»ÃÕèÃ¹ºÃÔàÇ³áÊ

´ŞÀÒ¾çÍŞ·èÒ¹´éÇÃ Windows 95 ãËéÃéÒÃá¶ºàÃ×é¹ **Desktop area**

¶éÒã²é Windows 98/2000 ãËéÃéÒÃá¶ºàÃ×é¹ **Screen area**

´Ùà¾ÒèÃàµÔÁ...

Ø ºÃÔàÇ³Ë¹éÒ~Í

Ø àÃâ«ÃÙ²Ñè¹~ÍÀÒ¾

Ø à´Ê;ì·çÍ»áººËÃÒÃ²Ø´áÊ´Ş¹/₄Ã

## ÀÒÇĐáÊ´şÀÒ¾

ıÒÃÃÇÁ;Ñ¹çÍşàÃâ«ÀÙªÑè¹ă¹;ÒÃáÊ´şÀÒ¾áÂĐ;ÅØèÁÊÕ

´Ùà¾ÔèÁàµÔÁ...

ø ıÅØèÁÊÕ

ø àÃâ«ÀÙªÑè¹ıÍÀÒ¾

## àÃâ«ÅÛÑè¹"ÍÀÒ¾

“Ó¹Ç¹¾Ô;à«çÅá¹Ç¹Í¹κÛ³á¹ÇμÑés·ÕèáÊ´şíÂÛèº¹Ë¹éÒ“ÍçÍş·èÒ¹  
μÑÇÍÂèÒşà²è¹ àÃâ«ÅÛÑè¹ã¹;ÒÃáÊ´şÀÒ¾ 640 x 480 κ×Í;ÇéÒş 640  
¾Ô;à«çÅκÛ³ËÛş 480 ¾Ô;à«çÅ àÃâ«ÅÛÑè¹ã¹;ÒÃáÊ  
´şÀÒ¾ÃÔèşËÛşÁÒ;à·èÒã´ ;ç“ĐËÒÁÒÃ¶áÊ´şÃÒÃÅĐàÍÒÃ´ËÃ×Í  
çéÍÁÛÄä´é´ÕçÖé¹à·èÒ¹Ñé¹

´Ûà¾ÔèÀàμÔÁ...

∅ ¾Ô;à«çÅ

## à 'Êjì·çí»áººËÀÒÂªØ´áÊ´§¼Å

à 'Êjì·çí»·ÕèÁÕ;ÒÃáÊ´§ÀÒ¾¼ÀÒ;ÇèÒË¹Öè§ªØ´

àÁ×èíãªé Windows 98/2000 ·èÒ¹¨ÐÊÒÁÒÃ¶ãªéà 'Êjì·çí»áººËÀÒÂªØ  
´áÊ´§ÀÒ¾¼ä´é ¶éÒ·èÒ¹µÔ´µÑé§á¼§;ÃÒ;Ô;ÊiÁÒ;ÇèÒË¹Öè§á¼§  
ËÃ×íµÔ´µÑé§á¼§;ÃÒ;Ô;ÊiáººËÀÒÂ¨iÁÒ¾¼äÇéã¹¼iÁ¾¼ÔÇàµiÃiçí§·èÒ¹  
ä´ÃàÇiÃiáÊ´§ÀÒ¾¼çí§ Matrox PowerDesk ä´ÃàÇiÃià  
´ÕÃÇ;Ñ¹ÊÒÁÒÃ¶¶ÇººØÁá¼§;ÃÒ;Ô;Êi Matrox ä´éÁÒ;ÇèÒË¹Öè§á¼§  
¶éÒÃØè¹çí§áµèÁÐá¼§ä´éÃÑº;ÒÃÊ¹ÑºÊ¹Ø¹¨Ò;ä´ÃàÇiÃi¹Öé ÊÓËÃÑº  
çéiÁÙÃà¾¼ÔèÃàµÔÁ ãËé´Ùàí;ÊÒÃ»ÃÐ;íºçí§ Windows 98/2000

**ËÁÒÂàËµØ:** Windows 95 äÁèÊ¹ÑºÊ¹Ø¹ÀÒÇÐËÀÒÂªØ´áÊ´§ÀÒ¾¼

´Ùà¾¼ÔèÃàµÔÁ...

Ø [ºÃÒàÇ³Ë¹éÒ¨í](#)

Ø [ºÃÒàÇ³áÊ´§ÀÒ¾¼](#)

¾Ôjà«çÅ

ÊèÇ¹·ÕèàÅçj·ÕèÊØ´·ÕèÊÒÁÒÃ¶áÊ´§º¹Ë¹éÒ´´ÍçÍ§·èÒ¹ä´é





