

# Matrox PowerDesk

Matrox PowerDesk f\ftfgfEjFfA,đŽg—p,·,é,Æ□AMatrox fOf%oftfBfbfNfX fn□[fhfEjFfA,đ□Ā'âCEÀ,É—~—  
p,μ,½,è□AMatrox fffBfXfvfCEfCSÖ~A,ì'Ç%oÁ"l,È<@"\,ÉfAfNfZfX,·,é,±,Æ,ª,Ā,«,Ü,·□B

Matrox PowerDesk ,ì<@"\,É,Í□Afvf□fpfefB fV□[fg,©,çfAfNfZfX,Ā,«,Ü,·□B,±,é,ç,ìfvf□fpfefB  
fV□[fg,í□AWindows ,ì **ffBfXfvfCEfC**,**ìfvf□fpfefB** f\_fCfAf□fO f{fbfNfX,É, ,è,Ü,·□BMatrox PowerDesk  
fvf□fpfefB fV□[fg,ÉfAfNfZfX,·,é•û-@,í^È%oª,ì,Æ,·,è,Ā,·□B

n Windows 95 ,Ā,Í□AWindows fffXfNfgfbfv,ì" wCEi,đ%oEfnfŠfbfN,μ□A**fvf□fpfefB** ,đfNfŠfbfN,μ,Ü,·□B

n Windows 98/2000 ,Ā,Í□AWindows fffXfNfgfbfv,ì" wCEi,đ%oEfnfŠfbfN,μ□A**fvf□fpfefB** à □Ÿ'è à □Ū□×  
,đfNfŠfbfN,μ,Ü,·□B}f<f` fffBfXfvfCEfC fffXfNfgfbfv,đŽg—p,μ,Ā,ç,é□ê□±,í□A□Ū□×  
,đfNfŠfbfN,·,é'O,ÉfffBfXfvfCEfC,đ'ì'đ,μ,Ü,·□B

,Ü,½□AMatrox QuickDesk ,đŽg—p,·,é,Æ□AMatrox PowerDesk ,ì<@"\,É,·,î,â,-  
fAfNfZfX,Ā,«,Ü,·□BPowerDesk ,ì<@"\,É,Í□AQuickDesk ,©,ç,ì,ŸfAfNfZfX,Ā,«,é,à,ì,ª, ,è,Ü,·□B

Matrox PowerDesk f\ftfgfEjFfA,ì□Ū□×,É,Ā,ç,Ā,í□A,±,ìfwf<fv,·,æ,Ñ—~—p%oĀ"\,ÉfRf"feLfxfg  
fwf<fv,đŽQ□Æ,μ,Ā,,¾,¾,ç□BfRf"feLfxfg fwf<fv,ÉfAfNfZfX,·,é,É,Í□Af\_fCfAf□fO f{fbfNfX,ìf^fCfCgf< fo□[É, ,é  
**?** ,đfNfŠfbfN,μ□Afwf<fv,đ•\Žì,μ,½,ç□€-Ū,đfNfŠfbfN,μ,Ü,·□Bfwf<fv fgfsfbfN,đ%oEfnfŠfbfN,·,é,Æ□Af|  
fbfvfAfbfv f□fj...□[.©,ç^ó□ü,Ü,½,ÍfRfs□[Ā,«,Ü,·□B

ŠÖ~A□€-Ū...

∅ [•i□"Āp"½ìßŪ²Āp½\\_Ā~ìß](#)

∅ [Matrox QuickDesk](#)

## ,±,ì•¶□',ìŽg—p-@

,±,ì•¶□',í□AƒNfŠfbfN□A%œfNfŠfbfN□Af\_fuf<fNfŠfbfN,È,Ç,ìŠî-{"I,È'€□ì-@,â□A,²Žg—p,ìfìfyfCE□[fefBf"fO  
fVfXfef€,ìŠî-{"I,È'mŽ~,đ'O'ñ,Æ,μ,Ä<L□q,³,ê,Ä,ç,Ü,·□B,Ü,½□A^È%º,ì•\<K'¥,đŽg—p,μ,Ä,ç,Ü,·:

n '¾Žš ,í□A%œ-Ê□ă,ì•>CE□□o,μ,âf%ofxf<,É•Žì,³,ê,é•¶Žš—ñ,đŽì,μ,Ü,·□B

n Ží'í ,í□Aftf@fCf<-¼□AfpfX□A□o"Á•¶□',ìf^fCfjf<,"æ,Ñ□V,μ,ç—pCEê,đŽì,μ,Ü,·□B

n '¾ŽšŽí'í ,í□A<'²Ž-□€,đŽì,μ,Ü,·□B

n f□□[f{□□[fh,ìfL□[,íŠp,©,Á,± ([ 1) ,Á•\<L,³,ê□Afvf%ofX<L□† (+) ,í•;□",ìfL□[,đ"~Žž,É%Ÿ,·,Æ,«,ÉŽg—  
p,³,ê,Ü,·□B—á: [Ctrl]+[Alt]+[Del] ,đ%Ÿ,μ,Ä□AƒRf"fſf...□[f^,đ□Ä<N" @ ,μ,Ü,·□B

n -í^ó ("a") ,í□A^ê~A,ì'€□ìŽè□‡,đŽì,μ,Ü,·□B—á,ì,í□A "OK à •Á,¶,é à OK ,đfNfŠfbfN" ,í "OK,  
,đfNfŠfbfN,μ□A•Á,¶,é ,đfNfŠfbfN,μ,Ä□AOK,đfNfŠfbfN,·,é" ,Æ,ç,±,Æ,Á,·□B

n —í,ì•¶Žš ,íŽQ□ÆŽ-□€,đŽì,μ,Ü,·□Bfwf<fv,đfìf"f%ofCf",Á•Žì,μ,Ä,ç,é□è□‡,í□A—  
í,ì•¶Žš,đfNfŠfbfN,·,é,Æ□AŽQ□Æ□æ,ìfgfsfbfN,ÉfWfff"fv,Á,«,Ü,·□B

,±,ê,í~[]CE []•ñ,Å,·[]B

•  $\hat{A}, \mathbb{1}, \epsilon$

,  $\pm, \lfloor f^f \rfloor, \delta f N f S f b f N, \mu, \ddot{A} \square A f \_ f C f A f \square f O f \{ f b f N f X, \delta \cdot \hat{A}, \mathbb{1}, \ddot{U}, \cdot \square B$



**fLfff“fZf<**

,±,lf{f^f“,đfNfŠfbfN,μ,Ä□A•İ□X,đ“K—p,<sup>1</sup>,.,É□Af\_fCfAf□fO f{fbfNfX,đ•Â,¶,Ü,·□B

OK

,±,lf{f^f",đfNfŠfbfN,μ,ÄA•İX,đ"K—p,μAf\_fCfAfO f{fbfNfX,đ•Â,¶,Ü,·B

, ±, ê, í, A, ±, ì, f, C, f, A, f, O, f, {, f, b, f, N, f, X, Ü, ½, í, v, f, p, f, e, f, B, f, V, f, g, ì, à, -³⁄₄, Å, ·, B



## fŠfZfbfg

,±,lf{f^f“,đfNfŠfbfN,μ,Ä□A□Ý'è,đfftfHf<fg'l,É•œE³,μ,Ü,·□B

## • Úřad

, ±, \{f^f", ðfNfŠfbfN, μ, Ä□Af\_fCfAf□fO f{fbfNfX, Å□s, Á, ½•ï□X, ð•Ú'¶, μ, Û, ·□B

-β,é

,±,lf{f^f",đfNfŠfbfN,μ,Ä□A1 ,Â^O,lfXfefbfv,É-β,è,Ü,·□B

**ŽŸ,Ö**

,±,lf{f^f“,đfNfŠfbfN,μ,ÄAŽŸ,lfXfefbfv,Éi,Ý,Ü,·B

,±,ì€-Ú,É'î%ž,·,éfwf<fv fgfsfbfN,í, ,è,Ü,<sup>1</sup>,ñ□B



## Matrox QuickDesk

---

QuickDesk ,đŽg—p,·,é,ÆAMatrox PowerDesk ,ì@“\,É,·,î,â,fAfNfZfX,Â,«,Ü,·BQuickDesk ,ì·Žì,Æ”ñ·\ Žì,đØ,è’Ö,ì,é,É,íAMatrox PowerDesk ,ì **fjfvfjfv**“ fvfpfpefB fv[fg,ìf`fFfbfN f{fbfNfX,đŽg—p,μ,Ü,·B



QuickDesk ,ìŽÀ[s’t,íA,» ,ìfAfCfRf” ,<sup>a</sup> Windows ,ìf^fXfN fo[ ,É·\Žì,<sup>3</sup> ,é,Ü,·BfAfCfRf” ,Éf}fEfX,ìf[ f f<,đ’u,,ÆACE»YŽg—p,μ,Â,ç,éffXfNfgfbfv,ìY’èî·ñ,²f[fbfvfAfbfv,Â·\ Žì,<sup>3</sup> ,é,Ü,·BfAfCfRf” ,đNfŠfbfN,·,é,ÆAQuickDesk ,ìf[ffj...[ ,<sup>a</sup>·\Žì,<sup>3</sup> ,é,Ü,·B QuickDesk fAfCfRf” ,đf\_fuf<fNfŠfbfN,μ,ÄA,·,î,â, %œ-É,ììSÜÈBĀ” f\_fCfAfO f{fbfNfX,đŠ),,± ,Æ,à,Â,«,Ü,·B

’[ : ,±,ìfKfCfh,ì-ÚŽÿ,ÉfŠfXfg,<sup>3</sup> ,é,Â,ç,È,ç Matrox QuickDesk f[ffj...[ [€-Ú,<sup>a</sup> ,ç,,Â, ,è,Ü,·,²A,» ,é,ç,ìf[ffj... [ [€-Ú,đfNfŠfbfN,·,é,ÆA,» ,ìf[ffj...[ [€-Ú,ÉŠÖ,·,éwfv,Ü,½,í‘€î·û-@,đ%œ-É,É·^Žì,·,é,± ,Æ,<sup>a</sup> ,Â,«,Ü,·B

ŠÖ~A[€-Ú...

Ø [Matrox PowerDesk](#)

## ffffXfNfgfbfv fXfL[]f€

,±,lf[]ffj...[][-Ú,đ'!đ,μ,Ä[]AfffXfNfgfbfv fXfL[]f€,đfAfNfZfX,Ü,½,Í•Ò[]-,μ,Ü,·[]BfffXfNfgfbfv fXfL[]f€  
,Æ,Í[]A•Ú'¶,³,ê,Ä,ç,éŠeŽíffBfXfvfCfC[]Ý'è,ì'g,Ý[]#,í,¹,Å,·[]BfXfL[]f€,ì'†,É,Í[]A%ø'œ"x,Æfjf  
%o[][ fpfCfcbfg,ªŠÜ,Ü,ê,Ä,ç,Ü,·[]B • i[]"f,ffj^ fffXfNfgfbfv,đŽg—p,·,é[]é[]#[]AfffXfNfgfbfv fXfL[]f€,É,Í  
Windows fffXfNfgfbfv"à,ìŠefffBfXfvfCfC,ì%¼'z^È'u,ªŠÜ,Ü,ê,Ü,·[]B

,±,lf[]ffj...[][-Ú,đfNfŠfbfN,μ,Ä[]A^È%ø,ì[][-Ú,ì^è—,đ•\Ž!,μ,Ü,·[]B

n 'è<`[]İ,Ý,ífffXfNfgfbfv fXfL[]f€,Í,·,x,Ä-¼'O,Å•\Ž!,³,è,Ü,·[]BfffXfNfgfbfv fXfL[]f€  
,ì[]Ý'è,đ[]Ø,è'Ö,!,é,É,Í[]A,»,ì-¼'O,đfNfŠfbfN,μ,Ü,·[]B

n C>[]Ý,ífffXfNfgfbfv[]Ý'è,đffXfNfgfbfv fXfL[]f€,É•Ú'¶,·,é,É,Í[]A'Ç%øÁ,đfNfŠfbfN,μ,Ü,·[]B

n •Ú'¶[]İ,Ý,ífffXfNfgfbfv fXfL[]f€,ì-¼'O,ì•İ[]X[]A[]í[]œ[]A[]î•ñ,ì•\Ž!,đ[]s,κ,É,Í[]A•Ö[]-,đfNfŠfbfN,μ,Ü,·[]B



## fEfBf“fhfE,ì”z’u

,±,ìf[]ffj...[][-Ú,đ’l’đ,·,é,Æ[]ACE»[]Ý,ìffXfNfgfbfv—ì^æ,É’î%ž,·,éfvf[]fOf%of€  
fEfBf“fhfE,ì^Ê’u,ÆfTfCfY,đ•Û’¶,“æ,Ñ•œCE³,Ä,«,Û,·[]B

fEfBf“fhfE,ì^Ê’u,ÆfTfCfY,í[]A, ,ç, ©, ¶, ß•Û’¶,³,ê,Ä,ç  
,é[]ê[]#,É,¾,·•œCE³,Ä,«,Û,·[]BfEfBf“fhfE[]î•ñ,í[]AffXfNfgfbfv—ì^æ,²,Æ,É•Û’¶,³,ê,Û,·[]B,±  
,ìfEfBf“fhfE[]î•ñ,í[]ARf“fsf...[]f^,ìfvfffbfg f\_fEf“[]AWindows ,ì[]Ä<N“®[]A,Û,½,í Windows  
,ìf[]fOfift,³[]s,í,ê,é,Û,Ä•Û’¶,³,ê,Û,·[]B

Ž©“® -- ,±,ìf[]ffj...[][,đ’l’đ,·,é,Æ[]A^Ê’í,ìšôšu,ÄfEfBf“fhfE,ì^Ê’u,ÆfTfCfY,đ•Û’¶,·,é,±  
,Æ,³,Ä,«,Û,·[]B,Û,½[]A,±  
,ìfìfvfVf#“ ,đ’l’đ,·,é,Æ[]AffXfNfgfbfv,³•í[]X,³,ê,½[]ê[]#[]AfEfBf“fhfE,ì^Ê’u,ÆfTfCfY,³Ž©“®“l,É•œCE³,³,ê,Û,  
[]B,±,ì<@”^,đ[]- ,·,é,É,í[]A []Y’è,đfNfšfbfN,µ,Ä,,¾,¾,ç[]B([]Y’è ,í []A Ž©“® ,³’l’đ,³,ê,Ä,ç,é[]ê[]#,ì,Ý—  
LCEø,Ä,·[]B)

’[]: f<f` fffBfXfvfCEfC fffXfNfgfbfv,đŽg,Ä,Ä,ç,Ä[]AffBfXfvfCEfC,ì%¼’z^Ê’u,đ•í[]X,µ,½[]ê[]#,í[]AffXfNfgfbfv  
—ì^æ,à•í[]X,³,ê,Û,·[]B

ŠÖ~A[]€-Ú...

- ø Äp½\_Ä`ìß—ì^æ
- ø •;[]“Äp”½ìßÚ²Äp½\_Ä`ìß

## ffXfNfgfbfv fAfCfRf“

,±,lf□ffj...□[□€-Ú,đ'ı'đ,·,é,Æ□ACE»□Ÿ,lfXfNfgfbfv—ı^æ,É'ı%ž,·,éffXfNfgfbfv fAfCfRf“,ı•\  
Žı^É'u,ª•Ú'ŋ,“,æ,Ñ•œCE³,³,ê,Ü,·□B

fAfCfRf“,ı^É'u,ı□A, ,ç,©,ŋ,ß•Ú'ŋ,³,ê,Ä,ç,é□ê□#,É,¾,¯•œCE³,Å,«,Ü,·□BfAfCfRf“□ı•ñ,ı□AffXfNfgfbfv—  
ı^æ,²,Æ,É•Ú'ŋ,³,ê,Ü,·□B

n **Ž©“®** -- ,±,lf□ffj...□[□€-Ú,đ'ı'đ,·,é,Æ□AffXfNfgfbfv—ı^æ,ª•ı□X,³,ê,½,Æ,«,É Matrox PowerDesk  
É,æ,èfAfCfRf“,ı^É'u,ªŽ©“®“ı,É•Ú'ŋ/•œCE³,³,ê,Ü,·□B

n **Make All Visible** -- ,±,lf□ffj...□[□€-Ú,đ'ı'đ,·,é,Æ□A%œ-É,ıŠO,É, ,éffXfNfgfbfv fAfCfRf“,ª%œ-  
É,lfXfNfgfbfv—ı^æ,É^Ú“®,μ,Ü,·□B

'□: f<f` fffBxfvfCEfC fffXfNfgfbfv,đŽg,Á,Ä,ç,Ä□AffBxfvfCEfC,ı%¼'z^É'u,đ•ı□X,μ,½□ê□#,ı□AffXfNfgfbfv  
—ı^æ,à•ı□X,³,ê,Ü,·□B

'□: ,±,ê,ç,ı<@“^,đŽg—p,·,é□ê□#,É,ı□AWindows ,ı **fAfCfRf“**,ı□®—ñ à **fAfCfRf“**,ıŽ©“®□®—ñ <@“^,ª-  
³CEø,É,É,Ä,Ä,ç,é,±,Æ,đŠm“F,μ,Ä,,¾,¾,ç□B,±,ı□Ÿè,ı□AWindows fffXfNfgfbfv,ıfofbfNfof%ofEf“fh,đf}fEfX,ı  
%oEf{f^f“,ÄfNfŠfbfN,·,é,Æ•^Žı,Ä,«,Ü,·□B

ŠÖ~A□€-Ú...

ø [Äp½\\_Ä\\_ıß—ı^æ](#)

ø [•;ı“Äp”½ıßÚ²Äp½\\_Ä\\_ıß](#)

**ffXfNfgfbfv,lfvCEfrf...[]F**

'l'ð,μ,½Ý'è,ÅffXfNfgfbfv fAfCfRf",ª,Ç,ì,æ,α,É•^Ž|,³,ê,é,©,ðŽ|,·fvfCEfrf...[][,Å,·B

## fOfŠfbfh,ÉfAfCfRf“,đfXfifbfv

,±,lf{fbfNfX,ÁffXfNfgfbfvfAfCfRf“—p,ÉfOfŠfbfhŸ’è,đ□□¬,·,é,±  
,Æ,ª,Á,«,Ü,·□BŠeffXfNfgfbfvfAfCfRf“,đŽ©“®“ı,ÉfOfŠfbfh“à,Á³•úCE`,©’•úCE`,É,·,é,½,ß,É,í□Af`fFfbfNf{  
fbfNfX,đfif“,É,μ,Ü,·□BfOfŠfbfh,ì³•úCE`,Ü,½,ı’•úCE`,İfTfCfY,đ’²□®,·,é,É,í□AfXf%ofCf\_□[,đ“®,©,μ,Ü,·□B

## ffXfNfgfbfv,ÉfOŠfbfh,ð•!

,±,lf`fFfbfN f{fbfNfX,ðfif“,É,μ□AfffXfNfgfbfv,lfAfCfRf“ fOfŠfbfh,ð•^Ž!,μ,Ü,·□B

,±,lf`fFfbfN f{fbfNfX,í□A**fOŠfbfh,ÉfAfCfRf“**,ðfXfifbfbv f`fFfbfN f{fbfNfX,ªfift,É,È,Á,Ä,†,é,©□A,Ü,½,í  
Windows **fAfNfefBfu,ÈffXfNfgfbfv** à **Web fy□[fW,Æ,μ,Ä•^Ž!**,ªfif“,ì,Æ,«,É,ÍŽg—p,Å,«,Ü,¹,ñ□B

## fAfcfrf“, ìjfxf^f}fcfy@—ñ

, ±, ìf`fFfbfN f{fbfNfX, ðflf“, É, μ, ÄffXfNfgfbfv fAfcfrf“, ì@—ñ•û-@, ðjfxf^f}fcfy, μ, Û, ·BŠY”-  
; , éf{f^f“, ðNfŠfbfN, μA@—ñ•û-@, ðl’ð, μ, Ä,, ¾, ¾, çB

l’ð, μ, ½@—ñ•û-@, ð“K—p, ·, é, É, Í : (1) **OK**, Û, ½, í XV, ðNfŠfbfN, μ, Û, ·B (2) Windows  
ffXfNfgfbfv, ìfofbfNfOf%oEf“fh, ðf}fEfX, ì%oEf{f^f“, ÅNfŠfbfN, μ, Û, ·B (3) **fAfcfrf“, ì@—ñ**  
, ðNfŠfbfN, μ, Û, ·B (4) f[fg flfvfVf#f” (-¾‘O#AŽí—b#Aftjcfy#A“ú•t#), ðNfŠfbfN, μ, Û, ·B

’@: , ±, ì<@”^, ðŽg—p, ·, é@é#É, íAWindows, ì **fAfcfrf“, ì@—ñ** à **fAfcfrf“, ìŽ@“@@—ñ** <@”^, a-  
¾Eø, É, È, Á, Ä, ç, é, ±, Æ, ðŠm”F, μ, Ä,, ¾, ¾, çB

**fwf:fv**

,±,lf[]fj...[][-Ú,đfNfŠfbfN,μ,Ä[]AMatrox PowerDesk ŠÖ~A,ì[]Ú[]×[]î•ň,ÉfAfNfZfX,μ,Ü,·[]B

•i"ffj^<@"^,đžg—p

,»;ì¼,ì•i"ffj^<@"^,đžg—p,·,éê±,ÉA,±,ìf`fFbfN f{fbfNfX,đjf“,É,μ,Ü,·B,±,ê,ç,ì<@"^,ª•s—  
v,Èê±,É,íAflft,É,μ,Ä,,¼,³,çB



**fvf fOf%of€ ,đŠJ, /•Â, ¶, é Û, ÉfEjCf“fhfE, ì Ê’u, đ•Û’¶, , é/•œCE³, , é**

, ±, ÌÁ², ÎP, ½, a—LCEø, È, Æ, « ÌÀÌßÛ, Þ×Ñ ³“ÝÄÞ³, Ì»²½Þ, Æ^Ê’u, Í•Â, ¶, é, Æ, «, É•Û’¶, ³, êæ“xŠJ, -  
, Æ, «, É•œCE³, ³, ê, Û, . ÑB

, ±, Ì<@”^, ÍA•i“f, fjf^<@”^, đŽg—p, a-³CEø, Ì, Æ, «, É, ÍŽg—p, Å, «, Û, ¹, ñ ÑB

**Äb"½ìßÚ²,ÉìßÚ, Þ×Ñ ³"ÝÄb³,ðŠj,:**

,±,ìÁ², Îb",½,ª—LCEø,È,Æ,«A,·,×,Ä,ìßÚ, Þ×Ñ ³"ÝÄb³,ª'ì'ð,µ,½Äb"½ìßÚ²,ì'±  
%o>,ÄŠj,«,Ü,·BÄb"½ìßÚ²,íCE»Y,ìÄb"½,Ä"ìß,ì^ê•",Å, ,éêê±,ì,Ý'ì'ð%oÅ"^,Å,·B

ìßÚ, Þ×Ñ ³"ÝÄb³,ªÄb"½ìßÚ²—ì^æ,æ,è'å,«,çêê±A³"ÝÄb³,ì,±,ì<@"^,ì%e<¿,ðŽó,¯,Ü,¹,ñj

,±,ì<@"^,ìA•;ì"f,fjf^<@"^,ðŽg—p ,ª-³CEø,ì,Æ,«,É,íŽg—p,Å,«,Ü,¹,ñB

'[]: "³"ÝÄb³,ì^ê'u,ð•Ü'¶/•œCE³..."<@"^,ì,±,ì<@"^,æ,è—D[]æ,³,ê,Ü,;j

**CenterPOPUP ,đŽg—p**

,±,İÁ<sup>±</sup>, İb<sup>-</sup>, ½, <sup>a</sup>—LCEø, Å•; □" Āb<sup>-</sup> ½İBÚ<sup>2</sup> Āb<sup>½</sup>, Ā<sup>-</sup>İB, đŽg—p, μ, Ā, ç, é, ê, ÷, □A<sup>^</sup>È%ø, İμİB¼@Ý, đ'İ'đ, μ, Ā, ç, é, ©, Ç, x, ©, É, æ, Ā, Ā□AÀb<sup>2</sup>±Ū, p, ÆÖ<sup>-</sup>¼°¼p İb<sup>-</sup>, ½, <sup>a</sup>Āb<sup>-</sup> ½İBÚ<sup>2</sup>, Ū, ½ İİBŪ, p×Ñ<sup>3</sup>"YĀb<sup>3</sup>, İ't%ø, ĀŠJ, «, Ū, ·□B

n □eİBŪ, p×Ñ<sup>3</sup>"YĀb<sup>3</sup>, É -- Àb<sup>2</sup>±Ū, p İb<sup>-</sup>, ½, đ, »; İ□eİBŪ, p×Ñ, İ<sup>3</sup>"YĀb<sup>3</sup>—İ<sup>^</sup>æ, İ't%ø, É'u, «, Ū, ·□B □İÀb<sup>2</sup>±Ū, p İb<sup>-</sup>, ½, İ□u□eİBŪ, p×Ñ□v, İ□A, »; ê, đ□İ□—, ·, éİBŪ, p×Ñ, İ, ±, Æ, Å, ·□B□j□eİBŪ, p×Ñ<sup>3</sup>"YĀb<sup>3</sup>, a•; □", İĀb<sup>-</sup> ½İBÚ<sup>2</sup>, É½ÉBÝ, ·, é, ê, ÷, □AÀb<sup>2</sup>±Ū, p İb<sup>-</sup>, ½, àŠJ, ·, Æ•; □", İĀb<sup>-</sup> ½İBÚ<sup>2</sup>, É½ÉBÝ, ·, é, ê, ÷, a, ·, è, Ū, ·□B

n İ<sup>3</sup>½ İ°İŪ, İ, ·, éĀb<sup>-</sup> ½İBÚ<sup>2</sup>, É -- Àb<sup>2</sup>±Ū, p İb<sup>-</sup>, ½, đİ<sup>3</sup>½ İ°İŪ, <sup>a</sup>CE»□Ý, ·, éĀb<sup>-</sup> ½İBÚ<sup>2</sup>, İ't%ø, É'u, «, Ū, ·□İeİBŪ, p×Ñ<sup>3</sup>"YĀb<sup>3</sup>, a, Ç, İĀb<sup>-</sup> ½İBÚ<sup>2</sup>, É, ·, é, ©, ÉŠÖCEW, È, □□B

n □eİBŪ, p×Ñ Āb<sup>-</sup> ½İBÚ<sup>2</sup>, É -- Àb<sup>2</sup>±Ū, p İb<sup>-</sup>, ½, đ, »; İ□eİBŪ, p×Ñ<sup>3</sup>"YĀb<sup>3</sup>, İ□Ā'ā"•<sup>a</sup>, aŠŪ, Ū, è, Ā, ç, éĀb<sup>-</sup> ½İBÚ<sup>2</sup>, İ't%ø, É'u, «, Ū, ·; j

n Āb<sup>-</sup> ½İBÚ<sup>2</sup>, É -- Àb<sup>2</sup>±Ū, p İb<sup>-</sup>, ½, đ'İ'đ, μ, ½Āb<sup>-</sup> ½İBÚ<sup>2</sup>, İ't%ø, É'u, «, Ū, ·; Āb<sup>-</sup> ½İBÚ<sup>2</sup>, İCE»□Ý, İĀb<sup>½</sup>, Ā<sup>-</sup>İB, İ<sup>^</sup>é•", Ā, ·, é, ê, ÷, İ, Ý'İ'đ%øĀ" ^, Ā, ·□B

<sup>3</sup>"YĀb<sup>3</sup>, <sup>a</sup>CE»□Ý, İĒb<sup>°</sup>—İ<sup>^</sup>æ□j, <sup>2</sup>Žg—p, İĀb<sup>½</sup>, Ā<sup>-</sup>İB, Ū, ½, İĀb<sup>-</sup> ½İBÚ<sup>2</sup>—İ<sup>^</sup>æ, İCE©, İ, é•"•<sup>a</sup>□j, æ, è'ā, «, ç, é, ê, ÷, □AĒb<sup>°</sup>—İ<sup>^</sup>æ, İ□İ□ā<÷, É"z'u, <sup>3</sup>, è, Ū, ·; Ā<sup>±</sup>, İb<sup>-</sup>, ½, Æ, »; İμİB¼@Ý, İ•; □" Āb<sup>-</sup> ½İBÚ<sup>2</sup> Ó°Āb, Ā, İ, ÝŽg—p%øĀ" ^, Ā, ·; j

,±, İ<@" ^, İ□A•; □"f, fjf ^<@" ^, đŽg—p, <sup>a</sup>—<sup>3</sup>CEø, İ, Æ, «, É, İŽg—p, Ā, «, Ū, <sup>1</sup>, ñ□B

'□: ,±, İ<@" ^, <sup>a</sup>—LCEø, Æ, È, é, İ, İ□AWindows, ÉŪ, pμÝ, μ, ½CEā, Ā, ·□B

## MaxVIEW ,đŽg—p (DualHead ,ì,Ý)

,±,ìf`fFfbfN f{fbfNfX,đfìf“,É,μ,ÄAfvfOf%œf€ fEfBf“fhfE,ìÁ‘â%œ»•ù-@,đŒCEä,μ,Û,·□B —á,ì,ìAf^fCgf<fo□,ìÁ‘â%œ»f{f^f“ ( □ ) ,đNfŠfbfN,μ,½,Æ,«,ìÁ‘â%œ»•ù-@,đŸ‘è,Á,«,Û,·□BfEfBf“fhfE,ª,Ç,ì,æ,¼,É□Á‘â%œ»,³,è,é,©,ìA‘I‘đ,μ,½ìfVfVf†f“,É,æ,Á,Ä^Û,É,è,Û,·□B

n **fEfCf“fhfE,đŠÛ,ÞffBfXfvfCEfC** -- ,»,ìfEfBf“fhfE,ì‘â”¼,đŠÛ,ñ,Á,ç,éf,fjf^,ÁfvfOf%œf€ fEfBf“fhfE,đÁ‘â%œ»,·,éèè†,É,ìA,±,ìfìfVfVf†f“,đ‘I‘đ,μ,Û,·□B

n **In display** -- Žw‘è,ìf,fjf^,ÁfvfOf%œf€ fEfBf“fhfE,đÁ‘â%œ»,·,éèè†,É,ìA,±,ìfìfVfVf†f“,đ‘I‘đ,μ,Û,·□B

,±,ìf`fFfbfN f{fbfNfX,ªfìft,ìèè†AfvfOf%œf€ fEfBf“fhfE,ì•;□”,ìf,fjf^,đŽg—p,μ,ÄÁ‘â%œ»,³,è,Û,·□B (,Á,Û,èAfEfBf“fhfE,ª•;□”,ìf,fjf^,É,Û,½,ª,Á,Ä•^Ž,³,è,Û,·□B)

,±,ì<@”^,ìA•;□”f,fjf^<@”^,đŽg—p ,ª-³CEø,ì,Æ,«,É,ìŽg—p,Á,«,Û,¹,ñ□B

‘□: ,±,ì<@”^,ìADualHead ‘ì%œžOf%œftfBfbfNfX fj□fh,ì 1 ‘ä-Ú,Æ 2 ‘ä,ß,ìf,fjf^,É,ì,Ý%œ<ç,μ,Û,·□B,±,ì<@”^,đŽg—p,Á,«,é,ì,ìADualHead •;□”f,fjf^ ,ª—LCEø,É,È,Á,Ä,ç,é,Æ,«,¾,~Á,·□B

ŠÖ~A□€-Ú...

ø [DualHead •;□”ffBfXfvfCEfC](#)

## ffBfXfvfCfC,ì'ì'ð

,±,ìf{f^f",ðfNfŠfbfN,μ,ÄffBfXfvfCfC,ð'ì'ð,μ,Ü,·BCE»Ý Windows ,ìffXfNfgfbfv,ÉŠÜ,Ü,ê,Ä,ç  
,éffBfXfvfCfC,ð'ì'ð,Ä,«,Ü,·BCE»Ý'ì'ð,³,ê,Ä,ç,éffBfXfvfCfC,ì",ìf{f^f",ì%oi,É•^Ž!,³,ê,Ü,·B  
,±,ì<@"^,íA•i"ff,ff^<@"^,ðŽg—p ,<sup>a-3</sup>CEø,ì,Æ,«,É,ÍŽg—p,Ä,«,Ü,<sup>1</sup>,ñB

, ±, ê, í, ð, μ, ½, < @ " \, ð à - ¾, μ, Û, · □ B

## fzfbfg fL[]

,±,lf[]jf...[][-Ú,ðfNfŠfbfN,μ,Ä[]AfffXfNfgfbfv fXfL[]f€,Æ Matrox PowerDesk ,ì<@"\,lfL[]f{[]f[h  
fVf#[]f[g]fjfbfg,ð'è<`,Ü,½,í•ï[]X,μ,Ü,·[]B





## Matrox Diagnostic ,đ·N“®,-,é

,±,lfjffj...[]€-Ú,đfNfSjbfN,μ,Ä[]AMatrox Diagnostic fvf[]fOf%of€đ·N“® ,μ,Ü,·[]B,±,lfvf[]fOf%of€  
,É,æ,A,Ä[]AfffBfXfvfCEfCŠÖ~A,ì-â'è,đŽ~•Ê,Â,«,é[]é[]†,ª, ,è,Ü,·[]B

**fXfNfŠ[f“fZ[fō[ ,đ<N“®**

,±,lfōffj...[€-Ú,đfNfŠfbfN,μ,ÄAfXfNfŠ[f“ fZ[fō[ ,đ'¼,¿,É<N“®,μ,Ü,·B,±,lfōffj...[€-Ú,íAWindows  
,)ffBfXfvfCfCÝ'è,Å **fXfNfŠ[f“ fZ[fō[ ,É "(,È,μ)"** ,ª'ı'đ,³,ê,Ä,ç,éêë,í•\Ž!,³,ê,Ü,¹,ñB

## ffBfXfvfCfC.lfvfppfefB

,±,lfjff...[[]€-Ú,đfNfŠfbfN,μ,Ä[]A%œ-Ê,ììSÛÊBÃ” f\_fCfAf[]fO f{fbfNfX,đŠJ,«,Û,·[]B

ŠÖ~A[]€-Ú...

∅ [Matrox PowerDesk](#)

## Matrox QuickDesk ,i|—<sup>1</sup>

,±,lf□ffj...□[□€-Ú,đfNfŠfjbfN,μ,Ä□AMatrox QuickDesk ,đ•Â,¶,Ü,·□BQuickDesk ,đ•Â,¶,é,Æ□AWindows ,lf^fXfN fo□[,É•\Ž!,³,ê,Ä,ç,½fAfCfRf“,²□Á,!,Ü,·□B

Matrox QuickDesk ,đ,à,α^ê“xŠj,,É,Í□A**fifvfjffj**“ fvf□fpfefB fV□[fg,ì **Matrox QuickDesk fAfCfRf“,đf^fXfN fo□[,É•\Ž!,·,é f`fFfjbfN f{fjbfNfX,đfif“,É,μ,Ü,·□B**

'□: Matrox PowerDesk ,ì<@“\,É,Í□AMatrox QuickDesk ,©,ç,ì,ÝfAfNfZfX,Â,«,é,à,ì,<sup>a</sup>, ,è,Ü,·□B

ŠÖ~A□€-Ú...

∅ [Matrox PowerDesk](#)

**fXfL[f€ fŠfXfg**

,±,é,í,ñAŠù'¶,ìffXfNfgfbfv fXfL[f€,ì^ê—,Å,·□B

**QuickDesk f[]ffj...[][,É•\Ž!,·,éXfL[][f€,ìÁ'â"]**

,±,lf{fbfNfX,ðŽg—p,μ,Ä[]AQuickDesk f[]ffj...[][,É•\Ž!,μ,½,çffXfNfgfbfv fXfL[][f€,ìÁ'â"] ,ðŽwŽ!,μ,Ü,·[]B  
,±,±,Á'! 'ð,μ,½" ^Èã,lfXfL[][f€,ª, ,é[]ê[]#[]AQuickDesk ,ì [,» ,ì'¼,lfXfL[][f€...] f[]ffj...[][[]€-Ü,ðŽg,Á,Ä'Ç  
%oÁ,lfXfL[][f€,ðfAfnfZfX,Á,«,Ü,·[]BfXfL[][f€,ì"] ,ª'½,[]A,±,±,Á'! 'ð,μ,½" ,ª'â ,« ,· ,¬,é[]ê[]#[]AQuickDesk  
f[]ffj...[][,É•\Ž!,ª,é,éXfL[][f€-¼,·,·,×,Ä,ªffBfXfvf[]fC,ÉŽù,Ü,è,«,ç,È,ç,±,Æ,ª ,è,Ü,·[]B

-¼'0,i•iX

,±,lf{f^f",đfNfŠfbfN,μ,ÄA'I'đ,μ,½ffXfNfgfbfv fXfL[f€,-¼'O,đ•iX,μ,Ü,·B

☐í☐œ

,±,lf{f^f",đfNfŠfbfN,μ,Ä☐A'I'đ,μ,½ffXfNfgfbfv fXfL☐[f€,đ☐í☐œ,μ,Ü,·☐B



## XIV

, ±, }f^f", đfNfŠfbfN, μ, ÄA'I'đ, μ, ½ffXfNfgfbfv fXfL[f€, đ"K—p, μ, Ü, ·B

**fXfL[f€fvf€frf...[**

,±,é,í[A'í'ð,μ,½fffXfNfgfbfv fXfL[f€,ìfvf€frf...[.Å.·BfffBfXfvf€fC f,[fh,ìà-¾,ð•\Ž!,·,é,É,í[Afvf€frf...  
[,[Éf}fEjX,ìj[lf<,ð'u,«,Ü,·B

**fXfL[f€,Æ<@”\**

,±,é,íAfffXfNfgfbfv fXfL[f€,Æ Matrox PowerDesk ,ì<@”\,î^ê—,Å,·□B,±,é,ç,ìfXfL[f€,Æ<@”\  
,É,í□AFL[f{□[fh fVf#□[fgf]fbfg,ð’è<` ,: ,é,±,Æ,ª,Å,«,Ü,·□B

fL□[f{□[fh fVf#□[fgf]fbfg,ð’è<` ,: ,é,É,í□A^ê—,Å□€-Ú,ð’I’ð,μ□A•\Ž!,ª,ê,½fefLfXfg  
f{fbfNfX“à,ðfNfŠfbfN,μ,Ü,·□BŽŸ,É□A1 ,Å,Ü,½,Í•i□”,ìfL□[ (,½,Æ,!,í□A[Ctrl]+[F10]) ,ð%œŸ,μ□A•Ů’¶  
,ðfNfŠfbfN,μ,Ü,·□B

## fL□[f{□[fh fVf#□[fgf]fbfg

^ê—,Á'í'ð,μ,½□€-Ú,ÉfL□[f{□[fh fVf#□[fgf]fbfg,ð'è<` , , ,é,É,í□A,±,}f{fbfNfX“à,ðfNfŠfbfN,μ,Ä 1  
,Ä,Ü,½,í•;□”,}fL□[ ( ,½,Æ,í,í□A[Ctrl]+[F10]) ,ð%öÿ,μ□A•Ü'¶ ,ðfNfŠfbfN,μ,Ü,·□B

fL□[f{□[fh fVf#□[fgf]fbfg,ð%öÿ,<sup>3</sup>,È,©,Á,½□ê□#□A,Ü,½,í%öÿ,μ,½fL□[f{□[fg fVf#□[fgf]fbfg,<sup>3</sup>Žg—  
p,Ä,«,È,¢□ê□#,í□A,±,}f{fbfNfX,É",È,μ" ,Æ•Ž!,<sup>3</sup>,é,Ü,·□B



## F

---

,±,lfvf[]pfefB fV[]fg,đŽg—p,μ,Ä^È%°²,đ[]s,ç,Ü,·:

n fffBfXfvfçfC,ì[]Ffof%of“fX,đ[]Ú[]×,É’²[]®,μ,Ü,·[]B

n fRf“fsf...[]f^,ì[]Ý’u,μ,Ä, ,é[]ê[]Š,ì-¾,é,³,É[]‡,í,¹,Ä’²[]®,μ,Ü,·[]B

n ‘¾,lf,jjf^,ìfffBfXfvfçfC[]F,Æ[]‡,í,¹,Ü,·[]B

,±,lfvf[]pfefB fV[]fg,ìŠefRf“fgf[][]f<,É,Â,ç,Ä,í[]AfRf“fefLfXfg fwf<fv,đŽQ[]Æ,μ,Ä,,¾,³,ç[]B

’[]: DualHead ,đfTf[][]fg,μ,Ä,ç,é Matrox fofo%oftfBfbfNfX fj[]fh,đ,²Žg—p,ì[]ê[]‡[]A,±,lfvf[]pfefB fV[]fg,í 2  
‘ä-Ú,lf,jjf^,É,íŽg—p,Â,«,Ü,¹,ñ[]BMatrox PowerDesk ,lfo[][]fWf‡f“ ,É,æ,Ä,Ä,í[]A,±,lfvf[]pfefB fV[]fg,²’S,Žg  
—p,Â,«,É,ç,à,ì,à, ,è,Ü,·[]B

□F%oo·“x

,±,lfXf%ofCf\_,đ^Ú“@,μ□Af,ffj^,ì□F%oo·“x,đ'²□@,μ,Ü,·□B"“g□F" ,đ□Ý'è,·,é,Æ□AfffBfXfvfCEfC,ì•W□€,ìŠD□F,ª  
%oo©□Ô,lfefBf“fg,đ'Ñ,Ñ,Ä•\Ž!,³,è,Ü,·□B"Š!□F" ,đ□Ý'è,·,é,Æ□AfffBfXfvfCEfC,ì•W□€  
,ìŠD□F,ª□Ä,lfefBf“fg,đ'Ñ,Ñ,Ä•\Ž!,³,è,Ü,·□B

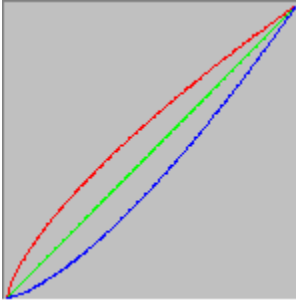
## fRf“fgf%ofXfg

, ±, ìfXf%ofCf\_, ð^Ú“ @, μ□Af, fjf^, ì□F%o.“x, ð’²□@, μ, Ü, ·□B”g□F" , ð□Ý’è, ·, é, Æ□AfffBfXfvfCEfC, ì•W□€ , ìŠD□F, ¢  
%o©□Ô, ìfefBf“fg, ð’Ñ, Ñ, Ä•\Ž!, ¢, è, Ü, ·□B"Š!□F" , ð□Ý’è, ·, é, Æ□AfffBfXfvfCEfC, ì•W□€  
, ìŠD□F, ¢□Ä, ìfefBf“fg, ð’Ñ, Ñ, Ä•\Ž!, ¢, è, Ü, ·□B

□Ô, —î, Ü, ½, í□Ä, ìfXf%ofCf\_, ð“~, ìfCEfxf<, É•ÛŽ□, ·, é, ½, ß, É, í□A"ØÝ, " f`fFfbfN f{fbfNfX, ð—LCEø  
%o», μ, Ü, ·□B, ±, ìf`fFfbfN f{fbfNfX, ¢—LCEø, È, Æ, «, É□A" fRf“fgf%ofXfg" fXf  
%ofCf\_, ð^Ú“ @, ·, é, Æ□AfffBfXfvfCEfC, ì’S’ì“l, ÈfRf“fgf%ofXfg, ð•ï□X, ·, é, ±, Æ, É, È, è, Ü, ·□B



□F'²<È□ü,ì•\Ž!



,±,ìfpflf<,í□AfffBfXfvfCfC,ì□Ô□A—î□A,“,æ,Ñ□Â□F,ì□F'²□ÄCE»<È□ü,ð•\Ž!,μ,Û,·□B,±,ìfpflf<,í□A"□F%o•“x"  
;“,æ,Ñ "fRf“fgf%ofXfg" fXf%ofCf\_Å□s,π•î□X,ð,·,x,Ä”½%of,μ,Û,·□B



## fjfvfVf#f“

---

,±,lfvf[]fpfefB fv[]lfg,đŽg—p,μ,Ä[]A,<sup>3</sup>,Ü,´,Ü,É<@”\,đ—LCEø,Ü,½,Í-<sup>3</sup>CEø,É,μ,½,è[]AMatrox fffBfXfvfCEfC fhf %ofCfo,lfpftfH[]f}f“fX,đ[]Ý’è,μ,½,è,μ,Ü,·[]B

Windows ,Ü,½,Í“Á’è,ì Windows fv[]fOf%of€,Å-â’è,<sup>a</sup>[]¶,μ,½[]é[]‡,Í[]A,±,ê,ç,lf`fFfbfN f{fbfNfX (“Á,ÉfpftfH[]f}f“fXŠÖ~A,lf`fFfbfN f{fbfNfX) ,ì[]Ý’è,đ•İ[]X,μ,Ä,Ý,Ü,·[]BŠefRf“fgf[][]f<,ì[]Ú[]×,É,Â,ç ,Ä,Í[]AfRf“fefLfXfg fwf<fv,đŽQ[]Æ,μ,Ä,,<sup>3</sup>/<sub>4</sub>,<sup>3</sup>,ç[]B

**ffXfNfgfbfv fXfL[f€,đ“K—p,·,é‘O,Éfvf[f“fvfg,đ•^Ž!**

,±,lf`fFfbfN f{fbfNfX,đfjf“,É,·,é,Æ[AffXfNfgfbfv fXfL[f€,ª•ïX,³,ê,½,Æ,«,É Matrox PowerDesk  
,É,æ,Á,Äfvf[f“fvfg,ª•^Ž!,³,ê,Ü,·B

f,ffj^,²ftf|[[fg,³,ê,·,AffBfXfvfCfC,ìY’è,ª“K—p,³,ê,È,ç,Æ,«,É,±,ì<@”\,ª-đ—š,¿,Ü,·B,±  
,ìê±AfXfNfš[f“%œ’œ,í³í,É•Ž!,³,ê,È,ç,©,à,μ,ê,Ü,¹,ñB15•b^È“à,É%œ-Êã,lfvf[f“fvfg,É  
%ž“š,μ,È,çê±ACE³,lfBfXfvfCfC,ìY’è,É-β,è,Ü,·B

fvf[f“fvfg,ì•Ž!,ª•K—v,È,çê±A,±,lf`fFfbfN f{fbfNfX,đfNfšfA,μ,Ü,·B

**ffXfNfgfbfv fAfCfRf“ ,ì”z’u,đŽ©“ @“l,É•Û’¶/•œĈ³**

,±,ìf`fFfbfN f{fbfNfX,ª—LĈø,È,Æ,«AMatrox PowerDesk ,ÍŽ©“ @“l,É•Û’¶,³,èAfffXfNfgfbfv fAfCfRf“ ,ì•\  
Žì^É’u,đ•œĈ³,μ,Û,·BfffXfNfgfbfv,Û,½,ífffBfXfvfĈfC—ì^æ,ì%đ’œ“x,đ•ìX, , ,é,²,Æ,ÉA,±,ê,ç,ì•\  
Žì^É’u,ª•Û’¶,“,æ,Ñ•œĈ³,³,ê,Û,·B

’□: f}f:f` fffBfXfvfĈfC fffXfNfgfbfv,đŽg,Á,Ä,ç,ÄAfffBfXfvfĈfC,ì  
%¼z^É’u,đ•ìX,μ,½□é□#,íAfffXfNfgfbfv—ì^æ,à•ìX,³,ê,Û,·B

## fEjBf“fhfE,ì”z’u,đŽ©“@“l,É•Ů‘ŋ/•œCE³

,±,lf`fFfbfNf{fbfNfX,đ’l’đ,·,é,Æ□AMatrox PowerDesk ,íŽ©“@“l,ÉfTfCfY,“,æ,Ňfjvf□fOf%of€  
fEjBf“fhfE,ì^É’u,đ•Ů‘ŋ,“,æ,Ň•œCE³,μ,·□B^É’u,íffXfNfgfbfv,Ů,½,íffBfXfjvfCEfC—ì^æ,ì  
%ođ’œ“x,đ•í□X,·,é“x,É□A•Ů‘ŋ,“,æ,Ň•œCE³,³,ê,Ů,·□B

’□: f}f·f` fffBfXfjvfCEfC fffXfNfgfbfv,đŽg,Á,Ä,ç,Ä□AfffBfXfjvfCEfC,ì  
%o¼z^É’u,đ•í□X,μ,½□ê□#,í□AfffXfNfgfbfv—ì^æ,à•í□X,³,ê,Ů,·□B

©, , é • " • a , ì f f B f X f v f C f C , É f f j f ... [ , ð • \ Ž !

, ± , ì f f F f b f N f { f b f N f X , ð f l f " , É , • , é , Æ [ A M a t r o x P o w e r D e s k , É , æ , Á , Ä f f f B f X f v f C f C — ì ^ æ ( f r f ... [ — ì ^ æ )  
, ì © , , é • " • a , É f f j f ... [ , a • \ Ž ! , ð , è , Ü , • B , ± , ì < @ " \ , í [ A f f f X f N f g f b f v — ì ^ æ • " • a , ð f r f ... [ — ì ^ æ Š O , É , , é [ é [ † , É [ A M  
a t r o x f Y [ f € < @ " \ , ì , æ , † , È — ð Š „ , ð , μ , Ü , • B

' [ : , ± , ì < @ " \ , í [ A W i n d o w s 9 8 / 2 0 0 0 , ì f X f ^ [ f g f f j f ... [ , É , í " ½ % o f , ð , è , Ü , † , ñ [ B

## Matrox QuickDesk fAfCfRf“,đf^fXfN fo□[,É•\Ž!,•,é



,±,lf`fFfbfNf{fbfNfX,đ'l'đ,μ,Ä□AWindows f^fXfNfo□[□ã,ì Matrox QuickDesk fAfCfRf“,đ•\Ž!,μ,Ü,•□B  
ŠÖ~A□€-Ú...

∅ [Matrox QuickDesk](#)



## **fXf^[]fgfAfbfvŽž,É Matrox QuickDesk ,đ<N“®**

,±,ÌÁ², ÎP, ½,đ—LÆø,É,·,é,Æ[]AWindows,đ[]Ă<N“®,·,é,½,Ñ,É Matrox QuickDesk ,đ<N“®,³,ê,Û,·[]B

ŠÖ~A[]€-Ú...

ø [Matrox QuickDesk](#)

## f})fEfX f|fCf“f^,đŠg‘á

,±,lf`fFfbfN f{fbfNfX,đflf“,É,·,é,Æ□Af})fEfX f|fCf“f^,lfTfCfY,ª 2 “{,É,È,è,Ü,·□B

Šg‘á,³,è,é,ì,í□Af})fEfX f|fCf“f^,ª Matrox fOf%oftfBfbfNfX fn□[fhfEfFfA,É,æ,Á,Ä•`,©,ê,é□ê□±,ì,Ý,Å,·□B-- f\ftfgfEfFfA,Ä•`,©,ê,é□ê□±,É,ÍŠg‘á,³,è,Ü,¹,ñ□B16 □F,đ’´,¡,éjjf%□[ fpjÆfbfg,đŽg—p,·,é□ê□±,É,í□Af})fEfX f|fCf“f^,í\ftfgfEfFfA,É,æ,Á,Ä•`,©,ê,Ü,·□B

'□: DualHead ‘í%žOf%oftfBfbfNfX fj□[fh,ì 2 ‘ä-Ú,lf,fff^,ì□ê□±,É,í□Af})fEfX f|fCf“f^,í□í,Éf\ftfgfEfFfA,Ä•`,©,ê,Ü,·□B,Ü,½□A"DualHead •i□"f,fff^" <@"^,đ Windows 2000 ,Ü,½,Í "DualHead fNf□□[f"" <@"^,Æ^ê□□,ÉŽg—p,·,é□ê□±,É,í□A1 ‘ä-Ú,“,æ,Ñ 2 ‘ä-Ú,lf,fff^,lf})fEfX f|fCf“f^,ªf\ftfgfEfFfA,Ä•`,©,ê,é,±,Æ,ª, ,è,Ü,·□B

**fn[]fhfEfFfA,đŽg—p,μ,Äjff%[][,lf}fEfX fljCf“f^,đ•` ,**

,±,lf`fFfbfN f{fbfNfX,đflf“ ,É,·,é,Æ[]Afjff%[][,ì Windows f}fEfX fljCf“f^,ª Matrox fOf%oftfBfbfNfX  
fn[]fhfEfFfA,Ä•` ,©,è,é,æ,æ,É,È,è,Û,·[]Bf}fEfXfljCf“f^,ªfn[]fhfEfFfA,Ä•` ,©,è,é,Æ[]Afrfffl  
fEfCf“fhfE,È,Ç,ì,æ,æ,É%æ-È,ª[];‘- ,É[]X[]V,³,è,é—ì^æ,Ä,à[]Af}fEfX fljCf“f^,ª,¿,ç,Ä,ç,½,è[]Á,ì,½,è,·,é,±  
,Æ,ª[];È,,È,è,Û,·[]B

16 []F^È[]ä,lfjff%[][ fpfCEfbfg,đŽg—p,μ,Ä,ç,éf}fEfX fljCf“f^,ì[]ê[]#[]A,±,lf`fFfbfN  
f{fbfNfX,đflf“ ,É,·,é,Æ[]A[]F[]“ ,ªCE , ,é,½,ß,ÉCE©%oh,ì,ª^«,,É,é,±,Æ,ª , ,è,Û,·[]B,» ,ì,æ,æ,ÈCE»[]Û,đ-h,® ,É,ì[]A  
Windows ,lfRf“fgf[][]f<,đŽg—p,μ,Ä[]A 16 []F^È%ª,lfjff%[][ fpfCEfbfg,đŽg—p,μ,Ä,ç,éf}fEfX fl  
fCf“f^,đ‘l’đ,·,é,©[]A,Û,½,ì,±,lf`fFfbfN f{fbfNfX,đflft,É,μ,Ä,,¾,¾,ç[]B

'[]: DualHead ‘î%žfOf%oftfBfbfNfX f[]fh,ì 2 ‘ä-Û,lf,fff^,ì[]ê[]# ,É,ì[]Af}fEfX fljCf“f^,ì[]í,Éf\  
ftfgfEfFfA,Ä•` ,©,è,Û,·[]B,Û,½[]A"DualHead •;[]“f,fff^" <@"^,đ Windows 2000 ,Û,½,ì "DualHead  
fNf[][]f"" <@"^,Æ^ê[][],ÉŽg—p,·,é[]ê[]# ,É,ì[]A1 ‘ä-Û,“ ,æ,Ñ 2 ‘ä-Û,lf,fff^,lf}fEfX fljCf“f^,ªf\  
ftfgfEfFfA,Ä•` ,©,è,é,±,Æ,ª , ,è,Û,·[]B

**f|fŠfSf“Íß,ì`%œ,ðfAfNfZf%ofCE[]fVf#f“ , , é**

, ±, ±, ¢Áª, , ¢, é, Ä, ç, é, ÆÍßØºPÝ (Ü, êü, â'½ŠpCE` , È, Ç) , ì•`%œ, ð±, ¾×Úº¼@Ý, µ, Ü, ·B“ÆŽ©, ÌŽè-@, Å•`  
%œ, ðs, Ä, Ä, ç, é(ÄPÚ°CEn, ì•`%œ; ÌÄ, âÃ»P²ÝCEn, Ì; Ä, È, Ç, Ì) ±ÌßØ¹º¼@Ý, Ä, ÍßØºPÝ, ì•`  
%œ, ¢³[]í, É[]s, í, è, È, ç[]é[]#, ¢, , è, Ü, ·B, » , Ì[]é[]#, É, Ì, ±, ÌÁª, , ðSO, µ, Ä, Ý, Ä, , ¾, ¢, ç[]B

## fffofCfXfrfbfgf}fbfv,ðfLfffbfVf“fO,·,é

,±,lf`fFfbfN f{fbfNfX,ª—LCEø,È,Æ,«Afñ[fhfEfFfA fAfNfZf%ofCE[f^,ªŽg—p,³,êAfOf%oftfBfbfN  
f[f,fŠ,Éfsfbfgf}fbfv,³,è,½%œ'œ,ðfLfffbfVf...,μ,Û,·B

Žw'è,lfvf[fOf%of€,Å-â'è,ª, ,éêê‡ (—á,i,îAfrrfbfgf}fbfv,ì, ,é•”•ª,ª³,μ,•`%œ,³,è,È,¢) A,±,lf`fFfbfN  
f{fbfNfX,ðfNfŠfA,μ,Ä,,¾,³,¢B

## fofX f}fXf^fŠf“fO ,đs,κ

,±,lf`fFfbfNf{fbfNfX,đ—LCEø,É,μ,Ä□AMatrox fOf%oftfBfbfNfX fj□[fh,lfofX f}fXf^fŠf“fO,đŽg—  
p,μ,Ü,□BfofX f}fXf^fŠf“fO,íŠg'£fj□[fh,ÅfRf“fsf...□[f^,ì CPU ,Æ“~Žž,Éf^fXfN,đŽA□s,Å,«,é<@\,Å,□B□,'¬,ì  
Pentium fRf“fsf...□[f^ (166 MHz ,æ,è'¬,ϕ),đ,“Ž□,¿,ì□é□#□A,±  
,lf`fFfbfNf{fbfNfX,đ'ì'đ,·,é,Æ□A'ãŠT,lfvf□fOf%of€,ìfffbfXfvfϕfC fpftfH□[f}f“fX,íCëü□ã,³,ê,Ü,□B

3D (DirectX) fvf□fOf%of€,ÆfofX f}fXf^fŠf“fO,đŽg—p,·,é,É,í□Afof%oftfBfbfNfX fj□[fh,É,í Š,,□ž,Ý—v<□(IRQ)  
,ª•K—v,Å,□B,Ü,Æ,ñ,Ç,lfRf“fsf...□[f^,íŽ©“@“ì,É IRQ ,đfOf%oftfBfbfNfX fj□[fh,ÉŠ,,è“—,Ä,Ü,·,ª□A,»κ  
,Ä,È,ϕ□é□#□à, ,è,Ü,□Bfof%oftfBfbfNfX fj□[fh,ª IRQ(Š,,□ž,Ý),đŠ,,è“—,Ä,Ä,ϕ,È,ϕ□é□#□AMatrox fofX  
f}fXf^fŠf“fO,đŽg—p,·,éfvf□fOf%of€,í□³,μ,□ì“@,μ,Ü,¹,ñ□B□Ú□×,É,Ä,ϕ,Ä,í□AMatrox ,Ü,½,lfVfXfef€,lf}fjf...  
fAf<,đŽQ□Æ,μ,Ä,,³/4,³,ϕ□B

<CEŽ@,lfRf“fsf...□[f^,É,æ,Á,Ä,í□AfofXf}fXf^fŠf“fO,đ'S,fTf|□[fg,μ,È,ϕ□é□#□ª, ,è,Ü,□BfRf“fsf...□[f^,ªfofX  
f}fXf^fŠf“fO,đfTf|□[fg,μ,È,ϕ□é□#□A,±,lf`fFfbfNf{fbfNfX,đfNfŠfA,μ,Ü,□B

,Ü,½□AfAfif□fO fWf#fCfXfefBfbfN,đŽg—p,μ,Ä□ADirectX fvf□fOf%of€,Å "fWfbf^fŠf“fO" (•s^À'è,È•Ž!“@□ì)  
,ª, ,é□é□#□A,±,lf`fFfbfNf{fbfNfX,đfNfŠfA,μ,Ü,□B



Šg'á•\Ž!Žž,ÉftfBf<f^fŠf“fO,đ□s,κ

,±,lf`fFfbfN f{fbfNfX,ª—LCEø,È,Æ,«□AfXfP□[fŠf“fO,đŽg—p,μ,½frrffl,đ□Ä□¶Žž,É  
%œæŽž,đ□,,β,é,½,β,ÉftfBf<f^'€□i,ªŽg—p,³,ê,Ú,·□B



## □, '¼fuf%of“fN't,Éfy□[fW ftšfbfv

, ±, ê, ³—LCEø%»», ³, ê, Ä, ç, é, Æ□ADirectDraw/Driect 3D fhf%ofCfo, Í□A□V, μ, ç%»æ'œ, ð•\  
Ž!, , é□Ú, Éf, fjf^, l□, '¼fuf%of“fN, ð'Ò, ÿ, Ü, ·□B, ±, ê, ð, μ, È, ç, Æ□A□V, μ, çftfCE□[f€, Í'!□À, É•\Ž!, ³, ê, Ü, ·□B

DirectX fAfvfšP□[fVf#f“, Å " ^ø, «—ô, ©, ê, ½%»æ'œ" ("j•Ð%»», μ, ½fAfjf□□[fVf#f“) , ³•\Ž!, ³, ê, ½□ê□#, É□A, ±  
, l f`fFfbfN f{fbfNfX, ð'I'ð, μ, Ä, , ¾, ¾, ç□B'Ê□□A, ±, l f`fFfbfNf{fbfNfX, ³ f`fFfbfN, ³, ê, Ä, ç, È, ç, Ù, x  
, ³□AfpftfH□[f}fX, ³, æ, , È, è, Ü, ·□B

## 16 frfbfg,lfrrffl fNflfŠfefB,đŽg—p

,±,lf`fFfbfN f{fbfNfX,ª—LŒø,ÅAWindows ,ª 256 □F (8 frfbfg) ,lfpfŒfbfg,đŽg—p,·,é,Æ,«AMatrox  
ffBfXfvfŒfC fhf%ofCfo,Í High Color (16 frfbfg) fpfŒfbfg,đŽg—p,µ,ÄAfRf“fsf...  
□lf^□[ fXfNfŠ□lf“,ÉffWf^f< frffl (AVI ,“,æ,Ñ MPEG ftf@fCf<) ,đ•\Ž!,µ,Û,·□B

## ftfHfbfMf“fo fAfNfZf%ofCE[fVf+f“,iŽg—p

,±,lf`fFfbfN f{fbfNfX,đ—LCEø,É,μ□AMatrox Direct3D fhf%ofCfo,É,“,ç,Ä□A"ftfHfbfMf“fo" fTf|  
□[fg,đfAfNfefBfu,É,μ,Ü,·□B

ftfHfbfMf“fo ,Æ,í□A3D fvff□fOf%of€,ÁŽg—p,<sup>3</sup>,é,éŽ<ŠoCEø%oÉ,Á, ,è□AZÀ□Ü,ì□F□”,æ,è,à<sup>1</sup>/<sub>2</sub>,  
CE©,<sup>1</sup>,é,<sup>1</sup>/<sub>2</sub>,ß,ì,à,ì,Á,·□B,±,ìCEø%oÉ,É,æ,è□A%o“CEi,í-¶,ì‘t,ÖŽÝ‘æ,É□Á,ì,Ä,ç,,æ,π  
,ÉCE©,ì,Ü,·□BftfHfbfMf“foCEø%oÉ,đŽg,Á,<sup>1</sup>/<sub>2</sub>fvff□fOf%of€,í□A,æ,èŠfAf<,ÉCE©,ì,Ü,·□B

,±,lf`fFfbfN f{fbfNfX,đ‘i’đ,μ,<sup>1</sup>/<sub>2</sub>,Æ,«□ADirect3D ftfHfbfMf“fo,afAfNfZf%ofCE□[fg,<sup>3</sup>,é,Ü,·□B

,±,lf`fFfbfN f{fbfNfX,đ‘i’đ,μ,É,ç,Æ,«□Afvf□fOf%of€,í (1) ftfHfbfMf“foCEø%oÉ,đ‘S,Žg—p,μ,É,ç (,æ,è‘¬,ç)  
□A,Ü,<sup>1</sup>/<sub>2</sub>,í (2) fvtfgfEjfA“à,ÁftfHfbfMf“fo,đfGf~f...fCE□[fg,·,é (,æ,è‘x,ç) ,ì,Ç,¿,ç,©,Á,·□B

ftfHfbfMf“foCEø%oÉ,đŽg—p‘t,ÉfGf%o□[,æ%oæ-É,É•Ž|,<sup>3</sup>,é,<sup>1</sup>/<sub>2</sub>□é□#□A,±,lf`fFfbfN f{fbfNfX,đ‘i’đ  
%ođ□ce,μ,Ä,,<sup>3</sup>/<sub>4</sub>,<sup>3</sup>,ç□B

**fZfjf“f\_fŠ fffBfXfvfCEfC fZfRf“fgf□□lf%o,ð Windows f,fjf^,Æ,μ,ÄŽg—p,·,é**

,±,lf`fFfbfN f{fbfNfX,ðfif“,É,μ,Ä□AfZfjf“f\_fŠ fffBfXfvfCEfC fZfRf“fgf□□lf%o,ð Windows f,fjf^,Æ,μ,ÄŽg—  
p,μ,Ü,·□B,±,l<@”\,Ä,í□A1 ,Ä,lfOf%oftfBfbfNfX f`fbfv,É,æ,Ä,Ä□A•É□X,l•\Ž!%oæ-É,ðŽ□,Ä 2  
,Ä,lf,fjf^,ð□\$CEä,μ,Ü,·□B



²Ýì«Ò°¼®Ý

---

,±,ìfvf[]pfefB fV[]fg,ðŽg—p,μ,Ä[]Afo[]fWf+f“”Ô[]t,ðŠÜ,b[]A,“Žg,č,ìffBfXfvfÆfC fn[]fhfEfFfA,“,æ,Ñf\ ftfgfEfFfA,ìÚ[]x,³“¼,ç,è,Ü,·[]B,±,ìV[]fg,ìŠe[]€-Ú,ìî•ñ,í[]Afrf“fefLfXfg fwf<fv,ðŽQ[]Æ,μ,Ä,,¼,³,ç[]B

**fOf%oftfBfbfNfX fn[]fhfEfFfA**

,±,lf{fbfNfX,lfOf%oftfBfbfNfX fn[]fhfEfFfA,É[]ñ,ª, ,è,Ü,·[]B

## ÓÃÞÙ

,±,é,íACE»Ý,ì Matrox fOf%ftfBbfN fj[fh,lf,fff<-¼,Å,·B



**fOf%oftfBfbfNfX f`fbfv**

,±,é,í,AMatrox fOf%oftfBfbfNfX fj□[fh,É“◊ú,³,é,Ä,ç,éfOf%oftfBfbfNfX f`fbfv,ì-¼'O,Å,·□B

f f, fš

, ±, é, í, ð, ò, ù, ò Matrox fOf%oftfBfbfN fj[fh, ÉfCf“fXfg[f<, ³, è, Ä, ç, é, éA fOf%oftfBfbfN f f, fš—É  
(‘P^É: f fKfofCf g) , Å, ·, B

f, f, f^fCfv

, ±, é, í, of % of t f B f b f N f X f f f h, f, f, f^fCfv, Å, · B

## RAMDAC

, ±, ê, í, ñ AMatrox fOf%oftfBfbfN fj[]fh[]ã, ì RAMDAC ("Random Access Memory Digital-to-Analog Converter") , ì' ñ "x ('P^Ê: f[]Kfwf·fc) , Å, ·BfOf%oftfBfbfN fj[]fh, ì RAMDAC , ã' ñ, ÿ, ê, í, ñ A, » , ê, ¾, ÿOf %oftfBfbfN" \— í, ã, ü, ã, µ, Û, ·B

¼Ø±Ù ÁÝÊº

,±,é,íACE»ÝŽg—p't,ì Matrox fOf%oftfBfbfN fj□[fh,đŽ•Ê,.,éCEÅ—L,ìfvfŠfAf<”Ô□t,Å,·□B

## 'Ç%Áfn[fhfEjFfA

,±,ê,í,AMatrox fOf%oftfBfbfNfX fj[fh,É'Ç%Á,³,ê,Ä,ç,é,·,×,Ä,ìfn[fhfEjFfA,ì^ê—,Å,·B

§i,³,ê,é,ÆA "(frf·fgfCj")",í Matrox fj[fh,É^'z,³,ê,½<@"\,ðŽ!,μ,Û,·B

§i,³,ê,½CEä,ÉA "(fAfhfj")",í Matrox fj[fh,É'Ç%Á,·,é<@"\,ðŽ!,μ,Û,·B

**fOf%oftBfbfNfX f\ftfgfEfFfA (fo[]fWf+f“)**

,±,lf{fbfNfX,É,í[]AfffBfXfvfCfC f\ftfgfEfFfA,ÉŠÖ,.,é[]ñ,ª, ,è,Ü,·B

## fof%oftfbfNfX BIOS

, ±, é, í, ů, ž, —, p, μ, ä, ç, é Matrox fOf%oftfbfNfX fj[] [fh, ì) BIOS ("Basic Input/Output System")  
, ì) fo[] [Wf#j"" Ô[] t, Å, ·[] B, ±, ì) BIOS , í[] A\[] tfgfEjFfA, É, æ, Á, Ä[] X[] V, ³, ê, é, ±, Æ, ², , è, Û, ·[] B



## ffBfXfvfCEfC fhf%ofCfo

, ±, é, í, Ć » ÿ fCf " fXfg [f<, ³, è, Ä, ç, é Matrox ffBfXfvfCEfC fhf%ofCfo, ì fo [fWf#f", Å, · □ B, ±, ì f f t f g f E f F f A, í Matrox fO f % o f t f B f b f N f X f j [f h, ð f R f " f g f [f<, µ, Ü, · □ B

## f~fj VDD

,±,é,í,ACE»ÝfCf“fXfg[f<,³,ê,Ä,ç,é VDD ("Virtual Device Driver") ,lfo[fWf#f“”Ôt,Å,·BVDD ,íAMatrox  
fn[fhfEjFfA’Á—L,ìŠî-{"I,È ('áfCEfxf<,ì) fffBfXfvfCEfC<@"\,ð^—,μ,Ü,·B’¼,ìŠî-{"I,È<@"\,íAWindows  
VDD ,É,æ,Ä,Ä^—,³,ê,Ü,·B

## fflhf fhf%ofCfo

CE»ŸfCf“fXfg[f<,³,è,Ä,ç,é Matrox fflhf fhf%ofCfo,lfö[fWf#f“,Å,·B,±,lfjflhf fhf%ofCfo,íAMatrox  
fn[fhfEjFfA,ìŠi-{"I,È•^Ž!<@"^,ð^—,μ,Ü,·B,»,ì¼,ìŠi-{"I,È•^Ž!<@"^,íA Windows ,lfjflhf,Å^—  
,³,è,Ü,·B

## Matrox PowerDesk

,±,ê,í,□AfVfXfef€,ÉfCf“fXfg□[f<,³,ê,½ Matrox PowerDesk f\ftfgfEfffA,̀fo□[fWf#f“ ,Å,·□B

## DirectDraw/Direct3D fhf%ofCfo

, ±, è, í, ACE » ÝfCf“fXfg [f<, ³, è, Ä, ç, é ADirectDraw/Direct3D , ì Matrox fhf%ofCfo, ìfo [fWf#f“”Ô t, Å, · B, ±  
, ìfhf%ofCfo, í A, æ, è'¼ U“i, É Matrox fn [fhfE fFfA, ÉfA fNfZfX, , é, ½, ß, É Afvf fOf%of€, É, æ, Á, Äžg—  
p, ³, è, é, ±, Æ, ³, , è, Û, · B

## Microsoft DirectX

, ±, é, í, ě » Ÿ fCf "fXfg [f<, ³, ê, Ä, ç, é Microsoft DirectX fftfgfEfFfA, ìfo [fWf#f" , Å, · B DirectX  
, ì Å Vfo [fWf#f" , Å, í A ³, µ, ò " © , , é, ½, ß, É A fCf "fXfg [f<, ³, ê, Ä, ç, È, ¯, ê, í, È, ç, È, ç fvf fOf %of € ,ª, , è, Ü, · B

, Ü, ½ A DirectX , ì Å < ß, ìfo [fWf#f" ,ª fCf "fXfg [f<, ³, ê, Ä, ç, È, ç, Æ A Matrox PowerDesk , ì < @ " \, ì ^ ê • " ,ª Žg—  
p, Å, «, È, ç ê ãª, , è, Ü, · B

' : • \ Ž , ³, ê, Ä, ç, é " Ž š, í A DirectX , ìfo [fWf#f" " Ô ã , Å, · B, ±, ì " Ô ã , ì 3 " Ô—  
Ú, ì " Ž š, í A ^ ê " Ê " I, È fo [fWf#f" " Ô ã , ð Ž , µ, Ä, ç, Ü, · B, ½, Æ, ì, í A DirectX 4.06.00.0318 , í A ^ ê " Ê " I, É, í  
DirectX 6 , É, È, è, Ü, · B

**fjXf^f}[] fTf|[]fg**

,±,lf{f^f“,đfNfŠfbfN,μ,Ä[]AfjXf^f}[] fTf|[]fg,ìî•ñ,đŽQ[]E,μ,Ü,·[]B

,±,ê,íjfx^f}[] fTf|[]fg[]•ñ,Å,·B



## Readme ftj@fCf<,đ•\Ž!

,±,lf{f^f“,đfNfŠfbfN,μ,Ä□AMatrox PowerDesk "Readme" ftj@fCf<,đ•\Ž!,μ,Ü,·□B,±,lfj@fCf<,í Matrox  
PowerDesk fffBfXfvfCfC fhf%ofCfo,“,æ,Ñf\ftfgfEjFfA,ì□d—v,È□î•ñ,đŠÜ,Y,Ü,·□B

**fEjFfu fTjCfg,É^Ú“®**

,±,lf{f^f“,đfNfŠfbfN,μ,Ä□A□»•i□î•ñ□AjjfXf^f}□[ fTf]□[fg,Ü,½,í\ ftfgfEjFfA,ì□X□V,ì,½,β,ÉfCf“f^□[flfbfg,Ö□Ú‘±,μ,Û,·□B



## TV o—í

---

,±,ìfvf[]pfefB fV[]fg,đŽg—p,μ,Ä[]ATV o—í[]Ý'è,đ•ï[]X,μ,Ü,·[]B

,±,ìfvf[]pfefB fV[]fg,ìŠefRf“fgf[]f<,ì[]Ú[]x,É,Â,ç,Ä,í[]AfRf“fefLfXfg fwf<fv,đŽQ[]Æ,μ,Ä,,<sup>3</sup>/<sub>4</sub>,<sup>3</sup>,ç[]B

,±,ìfvf[]pfefB fV[]fg,í[]ATV o—í,đfTf[]fg,μ,<sup>1</sup>/<sub>2</sub> G100 ,Ü,<sup>1</sup>/<sub>2</sub>,í G200 fx[]fX,ì Matrox fOf%oftfBfbfNfX  
fj[]fh,đŽg—p,μ,Ä,ç,é[]é[]‡,É,ì,Ý—~—p,Â,«,Ü,·[]B

## fffBfXfvfCfC,đ TV ,É•\Ž!

fRf“fsf...[]f^,É□Ú'±,μ,½ TV ,Ü,½,í VCR ,ÉfRf“fsf...[]f^ fffBfXfvfCfC,đ•\Ž!,Ü,½,í<L~^,·,é□è□#□A,±  
,lf`fFfbfNf{fbfNfX,đ'í'đ,·,é,Æ□AfRf“fsf...[]f^,lf`fFfbfNf{fbfNfX,đ'í'đ,μ,Ü,·□B

,±,lf`fFfbfNf{fbfNfX,đ'í'đ,·,é,Æ□AfRf“fsf...[]f^,lf`fFfbfNf{fbfNfX,đ'í'đ,μ,Ü,·□BTv  
□Y'è,Á,í□A^è”É”I,ÉfRf“fsf...[]f^,lf,fff^□Y'è,æ,è%øđ'œ“x,“,æ,ÑfŠftfCfCfbfVf... fC□[fg,á,-  
,É,è,Ü,·□B'á,čfŠftfCfCfbfVf... fC□[fg,Á,í□A,æ,è,ž,č,Á,«,ª-Ú—š,ž,Ü,·□B

**CEx□□:** fRf“fsf...[]f^,lf,fff^,É,æ,Á,Ä,í□Af^[]f□fbfjp,ì TV □Y'è,ÁŽg—p,<sup>3</sup>,é,é50 Hz □,¼fŠftfCfCfbfVf...  
fC□[fg,đfTf|□[fg,μ,Ü,<sup>1</sup>,ñ□B,±,lfŠftfCfCfbfVf... fC□[fg,đŽg—  
p,·,é□è□#□Af,fff^,É,æ,Á,Ä,í”j<sup>1</sup>,μ,Ü,·□B□Ú□x,í□Af,fff^,lf}fff...fAf<,đŽQ□Æ,μ,Ä,<sup>3</sup>/<sub>4</sub>,<sup>3</sup>,č□B

## TV • W

, ±, ê, ç, ì {f^f", ì1, Â, ðfNfŠfbfN, µ, Ä AfRf" fsf... [f^, É Ú' ±, ê, ½ TV, Ü, ½, í VCR, É, æ, è Žg—p, ê, ½ TV • W, ð Ž' • Ê, µ, Ü, :

n **NTSC** -- -k • Ä, â "ú - {A, » , ì' ¼, ì' n ^ æ, Å Žg—p, ê, é TV • W, Å, . B

n **PAL** -- f^ [fbfbfp, â' t' A, » , ì' ¼, ì' n ^ æ, Å Žg—p, ê, é TV • W, Å, . B

• s Šm, È TV • W, ð' ð, : , é ê # AfRf" fsf... [f^, ©, ç, ì o—í, í TV, Ü, ½, í VCR, É, µ, \ Ž, Ü, ½, í < L ~ ^, ê, Ü, ñ BTV, Ü, ½, í VCR, Å, Ç, ì • W, ð Žg—p, : , é, ©, ð CE ©, Å, , é, É, [Af} fff... fAf<, ð Ž Q Æ, µ, Ä, , ¾, , ç B

## Úx,È TV Ýè

,±,}f{f^f",đfNfŠfbfN,μ,ÄAÚx,È TV o—í,ìÝè,đ'²®,μ,Ü,·B,±,ê,ç,ìÝè,íATV ,Ü,½,Í VCR ,É·\  
Ž,Ü,½,í<L~^,·,é%œ'œ,É,ì,Ý"½%of,³,ê,Ü,·B

,±,}f{f^f",íA°ÝÍB¼P-Ä,Ü,½,ÍS-ĚPÄPμ ,ª—LCEø,É,È,Á,Ä,ç,ÄACE»Ý'I'đ,³,ê,Ä,ç,é TV •W€ªK—  
p,³,ê,Ä,ç,éê†,É,ì,ÝŽg—p,Á,«,Ü,·B

ŠÖ~A€-Ú...

Ø [Úx,È TV Ýè -- ,§](#)

## Úx, È TV Ý'è -- , , S

Matrox , ìffftfHf<fg, ìfAfhfof“fX TV o—ÍÝ'è, ÌA, Ù, Æ, ñ, Ç, Ì TV , Å, Ù, Æ, ñ, Ç, ÌfRf“fsf... [f^ fOf %oftfBfbfNfXfi, ½, Æ, Ì, ÌAfrf“fsf... [f^ fQ [f€, âWindowsffXfNfgfbfv, ð• ^ Ž, , é, Ì, É, Æ, ç, Ä, ç, Ù, , ; • ú' —<KŠi, ÉŠî, Å, ç, ½Aftf< fXfNfS [f“ frfffi, Ì• ^ Ž, É, Ç, É“K, µ, ½fAfhfof“fX TV o—ÍÝ'è, ã, è, Ù, , B, ±, ÌÝ'è, Í'È%º, Ì, Æ, , , è, Å, , B

### n NTSC

-¾, é, ³: 180  
fRf“fgf%ofXfg: 234  
'N, â, ©, ³: 137  
F, ç: 0

### n PAL

-¾, é, ³: 167  
fRf“fgf%ofXfg: 255  
'N, â, ©, ³: 138  
F, ç: 0

' : —'z“l, ÈÝ'è, É, , é, É, ÌxTV , ÌÝ'è, ð², , , é, ±, Æ, à•K—  
v, ©, à, µ, ê, Ù, ¹, ñ, ; , Ù, Æ, ñ, Ç, ÌŽs“ìfrfffi'•u, ìffftfHf<fg, Ì-¾, é, ³fRf“fgf%ofXfgA'N, â, ©, ³F, ç, Ì  
Ý'è, ÌA•ú' —<KŠi, æ, è, , ç, Å, , B, ±, è, ç, ÌÝ'è, ÌAfrfffi, ð• ^ Ž, , é, Ì, É, Í'Éí OK, Å, , ãAfrf“fsf... [f^ fOf  
%oftfBfbfNfXf, Å, ÍOK, Å, È, çê, ã, , è, Ù, , B, ; , ±, ê, ÌAMatrox , ìffftfHf<fg, Ì TV o—ÍÝ'è, ãfrfffi, É, Æ, Å, Ä—  
'z“l, ÈÝ'è, æ, è'á, ç, ©, ç , Å, , ; jTV , ÌÝ'è, ð², , , é, •ú-@, ÌÚx, É, Å, ç, Ä, ÌATV, Ìf}ffj...fAfc, ðŽQ, Æ, µ, Ä ,  
, ¾, ³, ç, j



**%œŽžfVfVf#f#“**

,±,ê,ç,ìRf“fgf□□lf<,đŽg—p,μ,Ä□AŽg—p,μ,Ä,ç,é TV ,l%œŽžfVfVf#f#“,đ•ï□X,μ,Ü,·□B

,±,ê,ç,ìRf“fgf□□lf<,É,æ,é□Ý’è,í□AfRf“fsf...□lf^,lf,fff^,É,í”½%of,<sup>3</sup>,ê,Ü,<sup>1</sup>,ñ□B

**,ç,Â,«-hž~**

,±,lf`fFbfNf{fbfNfX,đ'í'đ,μ,ÄAfRf"fsf...[f^,ÉÚ'±,μ,½ TV ,Ü,½,Í VCR ,ì ",ç,ç,Â,«CE,□" ,đžg—  
p,μ,Ü,·□B,±,ê,É,æ,è%æžç,ªCEü□ã,μ,Ü,·□B

,±,lfRf"fgf□□[f<,ÍAfRf"fsf...[f^,lf,ff^,É%e<ç,μ,Ü,¹,ř□B

## f, fmfNf

, ±, )f`fFfbfNf{fbfNfX, δ' I' δ, μ, Ä AfRf"fsf... [f^, É Ú' ±, μ, ½ TV, Ü, ½, Í VCR, Éf, fmfNf frfffi, δ•\  
Ž, Ü, ½, Í < L ~ ^, μ, Ü, · B

, ±, )fRf"fgf [f<, Í AfRf"fsf... [f^, )f, fjf^, É% e< z, μ, Ü, 1, ř B

## fejLjXfg,đŠg'£

,±,lf`fFfbfNf{fbfNfX,đ'I'đ,μ,ÄAfRf"fsf...[f^,ÉÚ'±,³,è,½ TV ,lfefLjXfg•\Ž{(,Ü,½,lfRf"fsf...[f^,ÉÚ'±,³,è,½ VCR ,lfefLjXfg<L~^),đ,í,,©,ÉŠg'£,μ,Ü,·□B,±,l<@"\,É,æ,è□AfeLjXfg,Í,æ,èVff□[fv,É□A-¾Šm,É•\Ž,³,è,Ü,·□B

fRf"fsf...[f^,©,ç,ì TV fVfOfif<,±,ì,æ,α,ÉEx□□,μ,È,ç,æ,α,É,·,é,É,Í□A,±,lf`fFfbfNf{fbfNfX,đfNfŠfA,μ,Ü,·□B

,±,lfRf"fgf□□[f<,Í□AfRf"fsf...[f^,lf,ffj^,É%e<ç,μ,Ü,¹,ñ□B

## fhfbfg fNf[]f<,ðk[]~

,±,lf`fFfbfNf{fbfNfX,ð'I'ð,μ,Ä[]A•i[]#frfffi (RCA) fP[]fuf<•t,«(S frfffi,l)%e<¿,ª,Ù,Æ,ñ,Ç,È,ç)fRf"fsf...  
[]f^,É[]Ú'±,³,ê,½ TV ,Ü,½,l VCR ,Ö,lfhfbfg fNf[]f< fGf%[][,ðCE,ç,μ,Ü,·[]B "fhfbfg fNf[]f<" ,í %æ'œ,l  
%[] ,É%o^,Ä,Ä^Ú"® ,·,éfhfbfg—ñ,l,æ,x,ÉCE©,i,é TV fffBfXfvfCEfC fGf%[][,Ä,·[]B

fRf"fsf...[]f^,©,ç,l TV fVfOfif<,ª,±,l,æ,x,ÉCEx[][],μ,È,ç,æ,x,É,·,é,É,í[]A,±  
,lf`fFfbfNf{fbfNfX,ðfNfŠfA,μ,Ü,·[]B

,±,lfRf"fgf[]f<,í[]AfRf"fsf...[]f^,lf,ff^,É%e<¿,μ,Ü,¹,ñ[]B

## TV ,Éjff%o[] fo[] ,đ•\Ž!

,±,}f{f^f“,đfNfŠfbfN,μ,Ä[]AfRf“fsf...[]f^,É[]Ú'±,μ,½TV ,Ü,½,Í VCR ,}jff%o[] fo[] ,đ•\ Ž!,Ü,½,Í<L~^,μ,Ü,·[]B,±,é,Í TV ,Ü,½,Í VCR —p,É%oæ'œ[]Y'è,đfefXfg,·,é,ì,É-đ—š,¿,Ü,·[]B

,±,}fRf“fgf[]f<,Í[]AfRf“fsf...[]f^,}f,}f^,É%oe<¿,μ,Ü,¹,ř[]B

## o—ÍP [fuf< f^fCfv

, ±, lf{fbfNfX, dŽg—p, μ, Ä□ATV , Ü, ½, Í VCR , ÉfRf“fsf... [f^, Ìfrfffi□o—Í, Ö□Ú‘ ±, , , é, ½, ß, ÉŽg—p, μ, Ä, ç, éfP□[fuf<, ÌŽí—p, dŽ˘•É, μ, Ü, ·□B^È%oº, Ì“à□A1, Á, ð‘ð, μ, Ü, ∴

n **oYÍß¼p˘Ä, Ü, ½, Í S frfffi** -- oYÍß¼p˘Ä, Ü, ½, Í S frfffi fP□[fuf<□B, ±, é, Í□A“Á, Éf^□[f□fbfp^ÈŠO, Å, à, Á, Æ, à—Ç, Žg—p, ³, é, Ü, ·□B

n **SCART - oYÍß¼p˘Ä** -- oYÍß¼p˘Äfrfffi fRfIfNf^•t, « SCART fP□[fuf<□B

n **SCART - RGB** -- RGB frfffi fRfIfNf^•t, « SCART fP□[fuf<□B

## TV %œ'œÝ'è

fŠXfgf{fbfNfX,đŽg—p,μ,ÄATV fRf"fgf□□[f< f^fCfv,đ'I'đ,μ□AfXf%ofCf\_,đŽg—p,μ,Ä□A,±  
,lfRf"fgf□□[f<,lfRf"fgf□□[f<,í□AfRf"fsf...□[f^,É□Ú'±,³,ê,½ TV ,Ü,½,Í VCR ,É  
%o½,đ•\Ž!,Ü,½,Í<L~^,·,é,©,³%oe<ι,μ,Ü,·□B

,±,ê,ç,lfRf"fgf□□[f<,lfRf"fsf...□[f^,lf,fff^,É%oe<ι,μ,Ü,¹,ñ□B

'□: ^Ü,È,Á,½%œ'œÝ'è,³Se TV •W□€ (NTSC ,Ü,½,Í PAL) ,É•Ú'¶,³,ê,Ü,·□B



, ·, x, Ä, Ì%œ'œ Ñ'è, ðfŠfZfbfg

, ±, Ìf{f^f", ðfNfŠfbfN, µ, Ä ÑAfRf"fsf... Ñ[f^, É Ñ'±, ³, è, ½ TV, Ü, ½, Í  
VCR, ÌÑ'è, ð •œÉ³, µ, Ü, · ÑB Ñ'è, ðfftfHf<fg'Í, É •œÉ³, µ, Ü, · ÑB

Ñ'è, ð •œÉ³, ·, é, ±, Æ, Í ÑAfRf"fsf... Ñ[f^, Ìf, fff^, É%œ<¿, ·, è, Ü, ¹, ñ ÑB



## DualHead

---

,±,ìfvf[]pfefB fV[]fg,ðŽg—p,μ,Ä[]AMatrox fOf%oftfBfbfNfX fj[]fh,ì DualHead <@"\,ð[]\$CEä,μ,Ü,·[]B,±  
,è,ç,ì<@"\,É,æ,è[]A1 ,Â,ìfOf%oftfBfbfNfX fj[]fh,Â“`Žž,É 2 ,Â,ìfffBfXfvfCEfC,ð[]\$CEä,Â,«,Ü,·[]BMatrox fOf  
%oftfBfbfNfX fj[]fh,É[]Ú±,·,é 2 ,Â-Ü,ìfffBfXfvfCEfC'•'u,Æ,μ,Ä,í[]A[]—^,ìfRf“fsf...[]f^ f,fjf^ (CRT)[]Aftf  
%ofbfg fpfjf< f,fjf^[]ATV[]A,Ü,½,í VCR ,ðŽg—p,Â,«,Ü,·[]B

,±,ìfvf[]pfefB fV[]fg,ìŠefRf“fgf[]f<,É,Â,ç,Ä,í[]AfRf“fefLfXfg fwf<fv,ðŽQ[]Æ,μ,Ä,,¾,³,ç[]B

,É,“[]A,±,ìfvf[]pfefB fV[]fg,í[]AMatrox fOf%oftfBfbfNfX fj[]fh,<sup>a</sup> DualHead <@"\,ðfTf[]fg,μ,Ä,ç  
,é[]ê[]‡,É,ì,Ý•Ž!,<sup>3</sup>,è,Ü,·[]B

**DualHead ,đ-³Œø%o»**

,±,lf{f^f",đ'!đ,μ,ÄAMatrox fOf%oftfBfbfNfX fj[]fh,ì 2 ,Â-Ú,ìfffBfXfjfŒfC,đ-³Œø,É,μ,Û,·B,±  
,lf{f^f",Â•ïX,μ,½Y'è,đlf",É,·,é,É,íAfrf"fsf...[]f^,đÄ<N"® ,μ,È,¯,ê,î,È,ç,È,çê±,ª, ,è,Û,·B

2 'ä-Ú,ìfffBfXfjfŒfC,đŽg—p,μ,Ä,ç,È,çê±,íA,±,ê,đ-³Œø,É,μ,Ä,"«,Û,·B,±,ê,ÅA1 'ä-  
Ú,ìfffBfXfjfŒfC,ì«"\,ªŽáŠ±Œü±,·,é,±,Æ,ª, ,è,Û,·B

## DualHead ,ìNf□□[f"□ADVDMax□A,Û,½,íY□[f€

"DualHead fNf□□[f"□A"DualHead fY□[f€"□A,Û,½,Í "DualHead DVDMax" <@"\,ðŽg—p,·,é,Æ,«,É□A,±,ìf{f^f",ð'I'ð,μ,Û,·□B,±,ê,ç,ì<@"\,É,æ,è□AMatrox fOf%oftfBfjbfNfX fj□[fh,É□Ú'±,³,è,Ä,ç,é 2 'ä,ìfffBfXfvfCEfC'•'u,ð"~Žž,ÉŽg—p,·,é,±,Æ,ª,Ä,«,Û,·□B2 'ä-Û,ìfffBfXfvfCEfC'•'u,Æ,μ,Ä,Í□A□]—^,ìfRf"fsf... □[f^ f,fjf^ (CRT)□Aftf%ofbfg fpf|f< f,fjf^□ATV□A,Û,½,Í VCR ,ðŽg—p,Ä,«,Û,·□B

n "DualHead fNf□□[f"□ <@"\,ðŽg—p,·,é,Æ□A2 'ä-Û,ìfffBfXfvfCEfC,É 1 'ä-Û,ìfffBfXfvfCEfC,Æ"~,¶"à— e,ð•\Ž!,Ä,«,Û,·□B,±,ê,Í□AfvfCEf|f"fe□[fVf+f" ,ð□s,Ä,½,è□ATV ,ðŽg,Ä,ÄfQ□[f€,ð,·,é,Æ,«,É•Ö—~ ,Ä,·□B

n "DualHead fY□[f€" <@"\,ðŽg—p,·,é,Æ□A2 'ä-Û,ìfffBfXfvfCEfC,Ä 1 'ä-Û,ìfffBfXfvfCEfC,ì^è•"•ª,ðŠg'å•\ Ž!,·,é,±,Æ,ª,Ä,«,Û,·□B

n "DualHead DVDMax" <@"\,ðŽg—p,·,é,Æ□A1 'ä-Û,ìfffBfXfvfCEfC□ä,ìfEfbf"fhfE,ÄfffWf^f< frfff|,ð□Ä□¶,μ,È,ª,ç□A"~Žž,É TV ,Ä"~,¶frfff|,ðftf<fXfNfŠ□[f" ,Ä•\Ž!,·,é,±,Æ,ª,Ä,«,Û,·□B

ŠÖ~A□€-Ú...

Ø [DualHead fNf□□\[f" ,ðŽg—p](#)

Ø [DualHead DVDMax ,ðŽg—p](#)

Ø [fY□\[f€,ìf|fvVf+f"](#)

## DualHead • ;"ffBfXfvfCfC

,±,lf{f^f",đ'!đ,μ,ÄAWindows ,lffXfNfgfbfv,É 2 ,Â-Ú,lffBfXfvfCfC,đ'Ç%Á,μ,Ü,·B2 'ä-  
Ú,lffBfXfvfCfC'·u,Æ,μ,Ä,íA[]-^ ,lRf"fsf...[]f^ f,jf^ (CRT)Aftf%ofbfg fpflf< f,jf^ATV[]A,Ü,½,í VCR  
,đŽg-p,Ä,«,Ü,·B

,±,ì<@"\,đ-LCEø,Ü,½,í-³CEø,É,·,é,É,íAfrf"fsf...[]f^,đÄ<N"@,·,é•K-v,ª, ,è,Ü,·B,±,lf{f^f",í Windows  
95 ,Ä,íŽg-p,Ä,«,Ü,¹,ñB(Windows 95 ,Ä,íAf}f<f`ffBfXfvfCfC,ªTf|[]fg,³,è,Ä,ç,È,ç,½,ß,Ä,·B)

,±,ì<@"\,đŽg-p,·,é,ÆAWindows ,í 2 ,Ä,ì•ÊX,lfof%oftfBfbfNfX fj[]fh,ª'¶[]Ý,·,é,©,ì,æ,x,É 1 ,Ä,ì Matrox  
fof%oftfBfbfNfX fj[]fh,đŽg-p,μ,Ü,·B2 ,Â-Ú,lffBfXfvfCfC,ìÝ'è,íAWindows ,lRf"fgf[]f<,đŽg-  
p,μ,Ä'²[]®,μ,Ü,·Bf}f<f`ffBfXfvfCfC f,[]fh,ìÚ[]x,É,Ä,ç,Ä,íAWindows 98/2000 ,lwf<fv[]€-  
Ú[]uf}f<f`ffBfXfvfCfC ftf|[]fg[]v,đŽQ[]Æ,μ,Ä,³/4,³,ç[]B

ŠÖ~A[]€-Ú...

∅ [DualHead • ;"ffBfXfvfCfC -- \[\]\\$CÈÀ](#)

## DualHead • i"ffBfXfvfCEfC -- §CEÀ

" DualHead • i"ffBfXfvfCEfC" <@\,É,í,ç,À,©,ì§CEÀ,à, ,è,Ü,·□B,½,¾,μ□A"Á,É'□<L,à,È,çCEÀ,è□A,±,è,ç,ì§CEÀ,í 2 ,Á-Ú,ìffBfXfvfCEfC,É,ì,Ý"K—p,³,è,Ü,·□B

n 16 ,Ü,½,í 32 frfbfg,ìff%□[ fpfCEfbfg,μ,©'í'ð,À,«,Ü,¹,ñ□B

n Matrox ,ìfY□[f€<@"\ (PixelTOUCH) ,íŽg—p,À,«,Ü,¹,ñ□B

n f}fEfX f}fCf" f^ ,í,·, x,Äf}ftgfEfffA,É,æ,Á,Ä•`%œ,³,è,Ü,·□B,±,ì,½,β□A□, '¬,É□Ä•`%œ,³□s,í,è,éfffBfXfvfCEfC—í^æ (½,Æ,ì,ì□Afrfffi fEfBf"fhfE) ,Éf}fEfX f}fCf" f^ ,ð'u, ,Æ□Af|fCf" f^ ,à,ç,À,ç,½,è□ACE©,ì,È,,È,Á,½,è,·,é,±,Æ,³, ,è,Ü,·□B Windows 2000 -- ,±,ìfo□[fWf#f" ,ì Windows ,Á,í□A1 'ä-Ú, ,æ,Ñ 2 'ä-Ú,ìf,ffj^ ,É•^Žì,³,è,é}fEfX f}fCf" f^ ,ìf}ftgfEfffA,Á•` ,©,è,Ü,·□B

n 2 ,Á-Ú,ìffBfXfvfCEfC,ì□A□Á'âffBfXfvfCEfC%ð'œ"x,Æ□Á'âfŠftfCEfbfVf... fCE□[fg,³

n fffWf^f< frfffi,í□Ä□¶,Á,«,È,ç□è□±,³, ,è,Ü,·□B

n 1 'ä-Ú,ìffBfXfvfCEfC,ì□«" ,àŽáŠ±—ð%œ» ,·,é,±,Æ,³, ,è,Ü,·□B

n Sonnetech **Colorific** fvf□fOf%œf€,ìfTf□[fg,³,è,Ä,ç,Ü,¹,ñ□B,Ü,½□A**fff%□[** fvf□fpfefB fV□[fg,³ ,éfo□[fWf#f" ,ì Matrox PowerDesk ,ð,²Žg—p,ì□è□±□A,±,ìfvf□fpfefB fV□[fg,íŽg—p,À,«,Ü,¹,ñ□B

n Windows 98 -- ,²Žg—p,ìfOf%œftfBfbfNfX fj□[fh,âffBfXfvfCEfC fhf%œfCfo,ÉŠÖ,í,è,È,□A,±,ìfo□[fWf#f" ,ì Windows ,ì□Afrf"fsf...□[f^ ,ì 1 'ä-Ú,ìf,ffj^ ,ìOpenGL fAfNfZf%œfCE□[fVf#f" ,ì,Ý,ðfTf□[fg,μ,Ü,·□B

n Windows 98 -- fOf%œftfBfbfNfX f□[f,š,í 1 'ä-Ú,ìffBfXfvfCEfC,Æ 2 ,Á-Ú,ìffBfXfvfCEfC,É,í"™ ,É•²š,,³,è,Ü,·□B,½,Æ,ì,ì□A16 MB,ìfOf%œftfBfbfNfX fj□[fh,ì□è□±□A1 'ä-Ú,ìffBfXfvfCEfC,Æ 2 ,Á-Ú,ìffBfXfvfCEfC,É,» ,è,¼,è 8 MB , , ,Áš,,è□U,ç,è,Ü,·□B,±,ì,½,β□A□Á'â•\Žì<@" \ ,É%œ<ç,·,é,±,Æ,³, ,è,Ü,·□B

n Windows 98 -- ,±,ìfo□[fWf#f" ,ì Windows ,Á,í□Afrf"fsf...□[f^ ,É•ì□" ,ìfOf%œftfBfbfNfX fj□[fh,³fCf" fXfg□[f<,³,è,Á,ç,é,Æ "DualHead • i" f,ffj^" <@"^ ,ðŽg—p,À,«,È,ç,±,Æ,³, ,è,Ü,·□B (frf"fsf...□[f^ ,ìf}fU□[f{□[fh,ÉfOf%œftfBfbfNfX fj□[fh,³<□Ü,³,è,Á,ç,é□è□±,É,í□A,» ,ìfj□[fh,ðŽg—p,·,é,©,Ç,π,©,ð□Ø,è'Ö,ì,é,±,Æ,³,À,«,Ü,·□B)

n Windows 2000 -- ,±,ìfo□[fWf#f" ,ì Windows ,ì□ADualHead 'í%œžfOf%œftfBfbfNfX fj□[fh,ì 1 'ä-Ú, ,æ,Ñ 2 'ä-Ú,ìf,ffj^ ,ð'P^è,ìf,ffj^ ,Æ,μ,Ä□^—□,μ,Ü,·□B (Matrox fffBfXfvfCEfC fhf%œfCfo,É,æ,Á,Ä 2 'ä,ìf,ffj^ ,É•²šð,³,è,Ü,·□B) ,» ,ìCE<%œÉ□A2 'ä,ìf,ffj^ ,É,í" ,¶%œð'œ"x,Æfj%œ□[ fpfCEfbfg□Ý'è,³"K—p,³,è,Ü,·□B,Ü,½□AWindows ,ìffXfNfgfbfV,Á,ì□AfffBfXfvfCEfC,ì%œ¼'z^É'u,³□í,É%œì,É•À,Ñ,Ü,·□B

•i"ffj^Y'è

,±,lf{f^f",đfNfŠfbfN,μ,ÄADualHead •i"ffj^Y'è,đ"A'è,lf[fWf#f",ì Windows ,É#<sup>1</sup>,Ä'<sup>2</sup>β,μ,Ü,·B

,±,lf{f^f",íA"A'è,lf[fWf#f",ì Windows ,đ,<sup>2</sup>Žg—p,É,È,èADualHead •i"ffj^ f{f^f",<sup>a</sup>l'đ,<sup>3</sup>ê,Ä,đ  
,éê#É,ì,ÝŽg—p,Â,«,Ü,·B

ŠÖ~A€-Ú...

∅ [DualHead •i"fffBfXfvfCEfC -- \\$CEÀ](#)





## DualHead fNf[f“ ,đŽg—p

,±,lf`fFfbfN f{fbfNfX,đflf“ ,É,μ,ÄA2 ,Â-Ú,iffBfXfvfCfC,É 1 ‘ä-Ú,iffBfXfvfCfC,ì“à—e,đ•Ž!,μ,Ü,·B

,±,lf`fFfbfN f{fbfNfX,íA[**DualHead ,lfNf[f“ADVDMaxA,Ü,½,lfY[f€] f{f^f“ ,a!‘đ,³,ê,Ä,ç**  
.éêê‡,É,ì,Ý•Ž!,³,ê,Ü,·B



## fNf□□[f“ ,ìfìvfvf#f“

,±,ìf{f^f“,đfNfŠfbfN,μ,Ä□A[**DualHead** fNf□□[f“] fìfvfvf#f“,đ'²□®,μ,Ü,·□B

,±,ìf{f^f“,í□A[**DualHead** ,ìfNf□□[f“□**ADVDMax**□**A,Ü,½,íY**□[**f€**] f{f^f“,³,é□A[**DualHead** **fNf□□[f“ ,đŽg—p**] f`fFfbfN f{fbfNfX,³fìf“,É,È,Á,Ä,ç,é□é□±,É,ì,Ý•\Ž!,³,é,Ü,·□B

## DVDMax ,ifvfVf#f“

,±,if{f^f“,đfNfŠfbfN,μ,Ä□A[**DualHead DVDMax**] f{fvfVf#f“,đ'²□®,μ,Ü,·□B

,±,if{f^f“,í□A[**DualHead ,ifNf□□[f“□ADVDMax□A,Ü,½,íY□[f€]**] f{f^f“,³'¹'đ,³,ê□A[**DualHead DVDMax ,đŽg—p**] f`fFfbfN f{fbfNfX,³fjf“,É,È,Á,Ä,ç,é□ê□‡,É,ì,Ý•\Ž|,³,ê,Ü,·□B

ŠÖ~A□€-Ú...

∅ [DualHead DVDMax -- fAfhfofCfX](#)

## DualHead DVDMax -- fAfhfofCfX

frfffl,lfAfXfyfNfg"ä,æfæfæfr,lfAfXfyfNfg"ä,Æ^ê'v,μ,È,çêê#Afrrfffl,ì%œ'œ,æ~c,ñ,ÅÆ©,|,é,±,Æ,ª, ,è,Ü,·□B  
,±,ì-â'è,ð%ðæ^, ,é,É,í : (1) **DVDMax ,lfvfVfjf"** ,ðfNfŠfbfN,μ,Ü,·□B (2) **fAfXfyfNfg"ä,É□**  
**,Ä,Ä•^Ž!**,ð'l'ð,μ,Ü,·□B (3) fefæfr,lfAfXfyfNfg"ä (4:3 ,Ü,½,í 16:9 -- ,½,ç,Ä,ç,lfæfæfr,í 4:3) ,ð'l'ð,μ,Ü,·□B  
(4) **frfffl,lfæfbf"fhfE fTfçfY,ÉŠî,Ä,ç,ÄæY□o** ,ð'l'ð,μ,Ü,·□B (5) **OK** ,Ü,½,í □X□V  
,ðfNfŠfbfN,μ□A•í□X,ð"K-p,μ,Ü,·□B

## fY[f€,lfvfVf#f“

,±,lf{f^f“,đfNfŠfjbfN,μ,ÄA[**DualHead fY[f€] flfvfVf#f“**,đ²@,μ,Ü,·B

,±,lf{f^f“,íA[**DualHead ,lfNf[f“ADVDMaxA,Ü,½,ífY[f€]** f{f^f“,ª¹¹đ,ª,ê,Ä,ç,ééééé,É,ì,Ý·\ Ž,ª,ê,Ü,·B

' : [**DualHead ,lfNf[f“ADVDMaxA,Ü,½,ífY[f€]** f,[]fh,Ä,íAft[]fU[],ª¹è<`,μ,½ Matrox PowerDesk ,lfzfbfg fL[],Ä [DualHead fY[f€] <@“\,đ—LCEø,Ü,½,í-³CEø,ÉY'è,Ä,«,·B2 ,Ä-Ú,lfBfXfVfCfC,ÉŽg—p,ª,ê,é%øđ'œ“x,íA,»,lfBfXfVfCfC,ìA'â·Ž!“—í,ÆA1 'ä-Ú,lfBfXfVfCfC,Á¹¹đ,ª,ê,½fY[f€—ì^æ,lfTfCfY,ÉŠí,Ä,ç,ÄCE^,ß,ç,ê,Ü,·B,Ä,Ü,èA¹¹đ,ª,ê,½fY[f€—ì^æ,æ,è'â,«,çTfj[]fg%øđ'œ“xA<¹¹í,É,íA,»,ì—ì^æ,É¹%ž,·,é%øđ'œ“x,ìŽŸ,É[],ç%øđ'œ“x,ªŽg—p,ª,ê,Ü,·B¹¹đ,ª,ê,½fY[f€%øđ'œ“x,æ,è,à—,ª,ç ('á,ç) fBfXfVfCfC%øđ'œ“x,đ-³—,ÉŽg—p,μ,æ,π,Æ,·,é,ÆAfCf[]fW,ìx,©,ç·”·ª,ª,ª,ª,ª,ª,È,ÇA2 ,Ä-Ú,lfBfXfVfCfC[]ã,lfY[f€—ì^æ,ª“K³,É·Ž,ª,ê,È,ç,±,Æ,ª, ,è,Ü,·B

ŠÖ~A[]€-Ú...

ø [DualHead Zoom -- \[\]\\$CEÀ](#)

## DualHead Zoom -- □\$CEÀ

"DualHead fY□[f€" <@"^,Å,Í□AMatrox fOf%oftfBfbfNfX fj□[fh,ìfrfffi fj□[fo□[fCEfC<@"^,ðŽg—p,·,éfffWf^f< frfffi,ð•^Ž!,·,é,±,Æ,Í,Å,«,Ü,¹,ñ□B,±,ìfrfffi fj□[fo□[fCEfC<@"^,í□"½,,ìfrfffi□Å□[fvf□fOf%of€,ÅŽg—p,³,è,Ä,ç ,Ü,·□Bfn□[fhfEjFfA fx□[fX,ìfrfffi fj□[fo□[fCEfC,ðŽg—p,·,é—ì^æ,Å "DualHead fY□[f€" <@"^,ðŽg— p,·,é,Æ□A2 'ä-Ú,ìf,ffj^,Å,Í,»,ì—ì^æ,³^ê□F,Å•^Ž!,³,è,Ü,·□B



## TV ,ìŸ'è

,±,è,ç,ìf{f^f",ðfNfŠfbfN,μ,ÄAÚ× TV o—ìŸ'è,ð'²@,μ,Ü,·B

n **DVDMax TV ,ìŸ'è** -- "DualHead DVDMax" <@"\,É±,í,¹,ÄAÚ× TV o—ìŸ'è,ð'²@,·,é,Æ,«,ÉA,±,ìf{f^f",ðfNfŠfbfN,μ,Ü,·BffftfHf<fg,ì DVDMax TV Ÿ'è,íA,½,Æ,ì,ìfrrffl ftj@fCf<,©,ç,ìftj<fXfNfŠ[f" frfffl,ì·\Ž!—p,É'²@,³,è,Ü,·B

n **ffXfNfgfbfv TV ,ìŸ'è** -- ^ê"Ê"l,ÈAÚ× TV o—ìŸ'è,ð'²@,·,é,Æ,«,ÉA,±,ìf{f^f",ðfNfŠfbfN,μ,Ü,·B,±,è,ç,ìŸ'è,íA"DualHead •;ì"ffBfXfvfÆfC"A"DualHead fNf[f""A,Ü,½,í "DualHead fY[f€" <@"\,ðŽg—p,·,é,Æ,«,ì,à,ì,À,·BffftfHf<fg,ìffXfNfgfbfv TV Ÿ'è,íAfrf"fsf...[f^ fOf%oftfBfbfNfX (frf"fsf...[f^ fQ[f€,â Windows ffXfNfgfbfv,È,Ç) ,ì·\Ž!—p,É'²@,³,è,Ü,·B

,±,è,ç,ìf{f^f",íA2 ,Ä-Ú,ìffBfXfvfÆfC,ª TV ,Ü,½,í VCR ,À, ,éê±,É,ì,Ÿ·\Ž!,³,è,Ü,·B

'[]: DVDMax <@"^,ìAÚ×,È TV o—ìŸ'è,ð'²@X,μ,½ê±A,»,è,ç,ìŸ'è,íA,±,ì<@"^,ðŽg—p,·,é,Æ,«,É,ì,Ÿ"K—p,³,è,Ü,·BDVDMax <@"^,ªŽg—p,³,è,Ä,ç,È,çê±,É,íAffXfNfgfbfv TV ,ìo—ìŸ'è,ªŽg—p,³,è,Ü,·B

## 2 'ä-Ú,ìffBfXfvfCfC,ìÄ'â%ø'œ"x

2 ,Ä-Ú,ìf,ffj^,âfvf%ofO fAf"fh fvfCfC fRf"fsf...[f^ f,ffj^,Ä, ,éêë#A,±,ìf{fbfNfX,ðŽg—  
p,μ,Ä,»,ìf,ffj^,ÄŽg—p, ,éÄ'âffBfXfvfCfC%ø'œ"x,ðŽwŽ!,μ,Û,·B(''ð%Ä"\,ÈÄ'â%ø'œ"x,íA2 ,Ä-  
Ú,ìffBfXfvfCfC,É'í,μ,Ä Matrox fOf%oftfBfbfNfX fj[fh,âTfj|[fg,μ,Ä,ç,éÄ'â%ø'œ"x -- 1280 x 1024 --  
,Ä,·B) ,±,ì%ø'œ"x,âA"DualHead fNf|[f"" ,Û,½,í "DualHead fy|[f€" <@\,ÄŽg—p,³,ê,Û,·B

2 ,Ä-Ú,ìf,ffj^,âfvf%ofO fAf"fh fvfCfC (DDC) fRf"fsf...[f^ f,ffj^,Ä, ,éêë#A,»,ìÄ'âffBfXfvfCfC  
%ø'œ"x,íŽ©"@"l,ÉC^è,³,êACE^è,³,ê,½%ø'œ"x,â,±,±,É•Ž!,³,ê,Û,·B

**Cx□□F:** 2 ,Ä-Ú,ìf,ffj^,âfvf%ofO fAf"fh fvfCfC^ÈŠO,ìfRf"fsf...[f^ f,ffj^,Ä, ,èA,±,±  
,Ä'ì'ð,³,ê,½Ä'âffBfXfvfCfC%ø'œ"x,â,»,ìf,ffj^,âTfj|[fg%Ä"\,È%ø'œ"x,ð',!,Ä,ç,éêë#ADualHead  
<@\,â,»,ì%ø'œ"x,ðŽg—p,μ,Ä,ç,éŠÔA,±,ìffBfXfvfCfC,ì•Ž!,í~c<È,μŽg—p,Ä,«,É,ç,±,Æ,â, ,è,Û,·B



## Å“Kšftfçfbvf... fç[fç -- ççÈÀ

"DualHead fNf[f]" <@\,ðŽg—p,μ,Ä,ç,é,Æ,«,ÉA1 'ä-Ú,ìffBfXfvfçfç,Æ 2 ,Ä-Ú,ìffBfXfvfçfç,ìšftfçfbvf... fç[fç,â^Ù,Á,Ä,ç,é,ÆA—¼•û,ìffBfXfvfçfç,ÉŽŸ,ÉŽ!,,æ,æ,ÉççÈÀ,âç,¶,Ü,·B

n f}fçX f[fç“f^,í,·,×,ÄfvtfgfEfgfA,É,æ,Á,Ä•`%æ,³,è,Ü,·B,±,ì,½,ßA,‘¬,ÉÄ•`%æ,âç,í,è,éffBfXfvfçfç—í^æ (,½,Æ,ì,ìAfrffl fEfgf“fhfE) ,Éf}fçX f[fç“f^,ð'u,,ÆA f[fç“f^,â,ç,Ä,ç,½,èAçç©,ì,È,,È,Ä,½,è,·,é,±,Æ,â, ,è,Ü,·B

n Å“âffBfXfvfçfç%ð'æ“x,íA—¼•û,ìffBfXfvfçfç,âTf[fç,Ä,«,é'l,Ü,Ä,ÉççÈÀ,³,è,Ü,·B

n fffWf^f< frffl,íÄç,Ä,«,È,çèç,â, ,è,Ü,·B

n fffBfXfvfçfç«“\,íŽáŠ±—ð%»„μ,Ü,·B

n Sonnetech **Colorific** fvf[fOf%ç,íTf[fç,³,è,Ä,ç,Ü,¹,ñB,Ü,½A**fjf%**[ fvf[pfefB fV[fç,â, ,éof[fWfç“„ì Matrox PowerDesk ,ð,²Žg—p,ìèçA,±,ìfvf[pfefB fV[fç,íŽg—p,Ä,«,Ü,¹,ñB

## fzfbfg fL[]

,±,lf{fbfNfX,đfNfŠfbfN,μ,Ä[]AMatrox PowerDesk <@"\," ,æ,ÑfJfvfVf#f" ,lfL[]f{[]fh  
fvf#[]fvgfjfbfg,đ'è<` ,Ü,½,í•i[]X,μ,Ü,·[]B

f}fEfX f|fCf“f^,É[],\*

"DualHead fY[]f€" <@"\,ì[]ê[]#[]A1 'ä-Ú,ìffBfXfvfCfC,Å,ìf}fEfX f|fCf“f^,ì" ©,«,É'Ç[],μ,Ä 2 ,Â-  
Ú,ìffBfXfvfCfC,ÉfY[]f€—ì^æ,ð•\Ž!,³,¹,½,ç[]ê[]#,É[]A,±,ìf`fFfbfN f{fbfNfX,ðf|f“,É,μ,Ü,·[]B

## fY[f€•\Ž!,³,ê,½—ì^æ,ðfXf€[fWf“fO

"DualHead fY[f€" <@\,ìèè#A2 ,Â-Ú,ìffBfXfvfCfC,É•\Ž!,³,ê,éfY[f€—ì^æ,ÉfffWf^f<  
ftfBf<f^fŠf“fO,ðs,ç,½,ç,Æ,«,ÉA,±,lf`fFfbfN f{fbfNfX,ðfIf“,É,μ,Û,·BftfBf<f^fŠf“fO,ðs,æ,ÆA  
%œ‘œ,ªŠŠ,ç,©,É,È,èA^ê”É“l,È—p“r,É,í,Û,Á,½,Žxá,ª, ,è,Û,¹,ñ,ªAfCf[fW•ÖW,ìÛ,É,ÍftfBf<f^,ð,©, ,  
È,çfY[f€,ì•ù,ª“K,μ,Ä,ç,Û,·B

## fAfXfyfNfg"ä

"DualHead DVDMax" <@\,ìèè#A,±,ê,ç,ìfRf"fgf[]f<,đŽg—p,μ,ÄA2 ,Â-Ú,ìfffBfXfvfCfC (TV ,Ü,½,í  
VCR) ã,ÄffWf^f< frfffi,ìTfCfY,đ,ç,ì"ö"x,É•iX,·,é,©,đ'!đ,μ,Û,·B

ŠÖ~A€-Ú...

ø [DualHead DVDMax -- fAfhofCfX](#)



## Í,Éftf<fXfNfŠ[f“•\Ž!

2 ,Â-Ú,ÌffBfXfvfCfC (TV ,Ü,½,Í VCR) ä,ÉffWf^f< frfffi,ðftf<fXfNfŠ[f“•\Ž!,µ,½,çê#ÉA,±,Ìf{f^f“,ð‘!ð,µ,Ü,·B

,±,Ìf{f^f“,ð‘!ð,µ,½,Æ,«,ÉAfffWf^f< frfffi f[fX,ÌfAfXfyfNfg“ä,² 2 ,Â-Ú,ÌffBfXfvfCfC,Æ““,¶,Å,È,çê#A2 ,Â-Ú,ÌffBfXfvfCfC,Ì•\Ž!,Å,Ìfrfffi %œ‘œ,²^ø,«L,Î,³,è,½,èA,Â,Ô,è,½,è,µ,Ä,µ,Ü,±,Æ,², ,è,Ü,·B

## fAfXfyfNfg"ä,É],Á,Ä•\Ž!

2 ,Â-Ú,ìffBfXfjvfCfC (TV ,Ü,½,Í VCR) ä,É•\Ž!,·,é,Æ,«,ÉAfffWf^f< frffi f  
[fX,ìfAfXfyfNfg"ä,ª^ÛŽ,³,è,é,æ,æ,É,µ,½,çèè,ÉA,±,ìf{f^f",ð'ì'ð,µ,Û,·B

,±,ìf{f^f",ð'ì'ð,µ,½,Æ,«,ÉAfffWf^f< frffi f[fX,ìfAfXfyfNfg"ä,ª 2 ,Â-  
Ú,ìffBfXfjvfCfC,Æ" ,¶,Å,È,çèèèA2 ,Â-Ú,ìffBfXfjvfCfC,É,Í•,ç«ŠEü,ª•\Ž!,³,è,Û,·B

## TV fAfXfyfNfg"ä

2 ,Â-Ú,ìffBfXfvfCfC,ÉŽg—p,μ,Ä,ç,éfrfffi'•'u (TV ,Û,½,í VCR) ,ìfAfXfyfNfg"ä,ðŽw'è,·,é,Æ,«,É□A,±,é,ç,ìf{f^f",ì,Đ,Æ,Á,ð'ì'ð,μ,Û,·□B

n **4:3 (•W□€)** -- •W□€,ì TV

n **16:9 (f□fCfh)** -- f□fCfhfXfNfŠ□[f" TV

□³,μ,çf{f^f",ð'ì'ð,μ,È,©,Á,½□ê□#□A2 ,Â-Ú,ìffBfXfvfCfC,ì•\Ž!,Á,ìfrfffi  
%œ'œ,ª^ø,«□L,ì,³,è,½,è,Á,Ô,è,½,è,μ,Ä,μ,Û,α,±,Æ,ª, ,è,Û,·□B

## fAfXfyfNfg"ä,ìCEŸ□o•û-@

ŽŸ,ìf{f^f",ì,ç,.,é,©,đ'l'đ,μ,Ä□Afrfffl,ìfAfXfyfNfg"ä,đ"»•Ê,.,é•û-@,đ'l'đ,μ,Ü,·□B

n **frfffl,ìf□[fX fTfCfY,ÉŠì,Ä,ç,ÄCEŸ□o** -- f□[fX frfffl,ì  
%ođ'œ"x,ÅfAfXfyfNfg"ä,đ"»•Ê,μ,Ü,·□B,½,Æ,ì,Î□A%ođ'œ"x 320 x 240 ,ìfrfffl,ìfAfXfyfNfg"ä,í 4:3  
,É,È,è,Ü,·□B

n **frfffl,ìfEfbf"fhfE fTfCfY,ÉŠì,Ä,ç,ÄCEŸ□o** -- 1 'ä-Ú,ìfffBfXfvfçEfc,ìfrfffl  
fEfbf"fhfE,ìfTfCfY,ÅfAfXfyfNfg"ä,đ"»•Ê,μ,Ü,·□B(frfffl fvfç□[f,,□[ fvf□fOf%of€,ì†,É,Í□Afrfffl  
fEfbf"fhfE,ì•\Žì,³,è,«□L,Î,³,è,½,Æ,«,Å,àfrfffl,ìfAfXfyfNfg"ä,đ^ŮŽ□,.,é,à,ì,³,è,è,Ü,·□B) ,±,ì□è□#□Afrfffl  
fEfbf"fhfE,É•\Žì,³,è,é□•,ç«ŠE□ü,í 2 ,Ä-Ú,ìfffBfXfvfçEfc,É,í•\Žì,³,è,Ü,¹,ñ□B

## Ú×Ýè

,±,ê,ç,ìRf“fgf[]f<,đŽg—p,μ,ÄA"DualHead DVDMax" <@“\,ìÚ×Ýè,đ²®,μ,Û,·B,±,ê,ç,ìÝè,íA2  
,Ā-Ú,ìffBfXfvfCfC (TV ,Û,½,í VCR) ã,Ā,ìfffi,ì•Ž!,É,ì,Ý%e<ì,μ,Û,·B

“Á’è,ìfffi fvf[]f,[] fvf[]fOf%of€,Ā-â’è,“[].,·,éê±,íA,±,ê,ç,ìÝè,đ²®,μ,Ā,Ý,Ā,,¾,¾,çB, ,éfffi  
fvf[]f,[] fvf[]fOf%of€,É,í“K∅,ÈÝè,Ā,àA•Ê,ìfvf[]fOf%of€,É,í±,í,È,ç,±,Æ,à, ,è,Û,·BÚ,μ,-  
,íAŠefRf“fgf[]f<,ìRf“fefLfXfg fvf<fv,đŽQÆ,μ,Ā,,¾,¾,çB

## f[]fX,ifgfŠf~f“fo,đ•ŮŽ

,±,if`fFfbfN f{fbfNfX,đfif“,É,μ,Ä[]Afrfffi fvf[]f,,[] fvf[]Of%of€,ifNfŠfbfsf“fo[]Ý’è,đŽg—p,μ,Ü,·[]Bfrfffi fvf[][]f,,[] fvf[]Of%of€,Á,í[]A2 ,Á-Ů,ìffBfXfvf[][]fC,É[]³,μ,frfffi[]%æ’æ,đ•\Ž!,·,é,½,ß,É[]A,± ,ìfifvfVf#f“,đfif“,É,·,é•K—v,ª, ,è,Ü,·[]B

,±,ìfifvfVf#f“,ªfif“,Á, ,é,Æ[]Afrfffi[]Ä[]¶,ì[]«”\,ª—ò%»»,·,é,±,Æ,ª, ,è,Ü,·[]B,Ü,½[]A^ê•”,ìfrfffi fvf[][]f,,[] fvf[]Of%of€,Á,í[]Afrfffi fEfBf“fhfE,ª•”•ª“l,É%oB,ê,½,è[]Ø,èŽæ,ç,ê,½,è,μ,½,Æ,«,É[]A2 ,Á-Ů,ìffBfXfvf[][]fC,Á,ìfrfffi•\Ž!,ª[]A•”•ª“l,É%oB,ê,½,è[]Ø,èŽæ,ç,ê,Á,μ,Ü,±,Æ,ª, ,è,Ü,·[]B



## ftfB[f<fhfx[fX,ÅŠg'á/k-•\Ž!

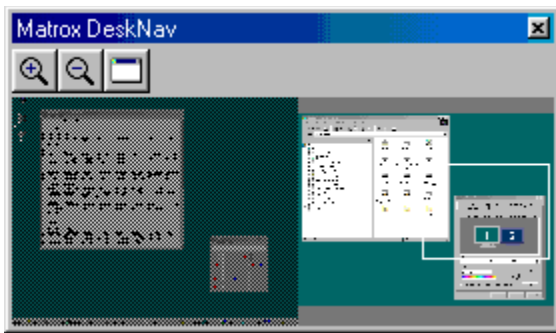
,±,lf`fFfbfN f{fbfNfX,đflf“,É,μ,ÄAftfB[f<fh'P^Ê,lfXfP[fŠf“fO,đŽg—p,μ,Ü,·Bfrfffl f[fX,əftfB[f<fh'P^Ê  
(fCf“f^fCE[fX),Å, ,éêê±A,±,lf`fFfbfN f{fbfNfX,đflf“,É,·,é,±,Æ,É,æ,Á,Äfrfffl%œ'œ,|•iŽ,ª  
%ü'P,³,è,é,±,Æ,ª, ,è,Ü,·BNTSC , ,æ,Ñ PAL •úŽ®,lfrrffl,í,ç, ,è,àftfB[f<fh'P^Ê,Å,·B

ftfCE[f€'P^Ê,lfXfP[fŠf“fO•úŽ®,đŽg—p,μAfrffflÄ¶,|«”\,đ,Å,«,é,¾,~CEüã,³,¹,½,ç,Æ,«,íA,±  
,lf`fFfbfN f{fbfNfX,đflft,É,μ,Ü,·Bfrfffl f[fX,əftfCE[f€'P^Ê (½,Æ,|,ÍAMPEG1 frffl),Å, ,éêê±A,±  
,lf`fFfbfN f{fbfNfX,đflft,É,·,é,±,Æ,É,æ,Á,Äfrfffl%œ'œ,|•iŽ,ª%ü'P,³,è,é,±,Æ,ª, ,è,Ü,·B





## Matrox DeskNav



,±,lfvf□fOf%of€,đŽg—p,μ,Ä□AWindows fffXfNfgfbfv—l^æ,đŠg'â,μ□Afrf...□[—l^æ,đ,·,l,â,-  
^Ú"® ,μ,Ü,·□BDeskNav ,đ<N"® ,·,é,É,í□AMatrox QuickDesk ,lf□fjf...□[ ,đŽg—p,μ,Ü,·□B

DeskNav ,lfffXfNfgfbfv fvfCEfrf...□[ ,đŽg—p,·,é,Æ□AMatrox fY□[f€<@"\,Ü,½,lf}f<f` fffBfXfvfCEfC  
fffXfNfgfbfv,đŽg—p,μ,Ä,ç,é,Æ,«,É□A "fjfrfQ□[fg" ,·,é,±,Æ,ª,Ä,«,Ü,·□BfffXfNfgfbfv fvfCEfrf...  
□[ ,Ä,í□AfY□[f€<@"\,lŽg—pŽž,É•Ž!,³,ê,Ä,ç,È,©,Ä,½%œ-É,đŠÜ,p□ACE»□Y,lfffXfNfgfbfv,l%œ'œ,ª•\  
Ž!,³,ê,Ü,·□Bf}f<f` fffBfXfvfCEfC fffXfNfgfbfv,đŽg—p,μ,Ä,ç,é□ê□‡,í□ADeskNav ,lfffXfNfgfbfv fvfCEfrf...  
□[ ,É,æ,Ä,Ä□AZg—p,μ,Ä,ç,éfvfXfe€,lŠe%œ-É,đ•\,μ,½%œ'œ,ª•\Ž!,³,ê,Ü,·□B

fvfCEfrf...□[—l^æ,đf\_fuf<fNfŠfbfN,·,é,Æ□AfffXfNfgfbfv□ä,l'í%ž,·,é□é□Š,Éf}fEfX,ljj□[f<f<,đ^Ú"® ,Ä,«,Ü,·□Bfj  
fbfvfAfbfv f□fjf...□[ ,đ•Ž!,·,é,É,í□AfvfCEfrf...□[—l^æ,đ%œfNfŠfbfN,μ,Ü,·□B

fY□[f€<@"\,đŽg—p,μ,Ä,ç,é,Æ,«,í□AfffXfNfgfbfv fvfCEfrf...□[ ,ÄfNfŠfbfN,Ü,½,lfhf%ofbfo,·,é,¾,·,Ä□Afrf...  
□[—l^æ,đ^Ú"® ,Ä,«,Ü,·□BfffXfNfgfbfv fvfCEfrf...□[ "à,l'·úCE` ,í□AfffXfNfgfbfv—l^æ,É'í,·,éCE»□Y,lfrf...□[—  
l^æ,l^É'u,đŽ!,μ,Ü,·□B

ŠÖ~A□€-Ú...

- ∅ [Matrox QuickDesk](#)
- ∅ [•;□"fffBfXfvfCEfCfffXfNfgfbfv](#)

í,ĚŽè'O,É•\Ž!

,±,lfjvfVfjf“,ð—LĚø,É,μ,ÄADeskNav fEfBf“fhfE,ðí,É'¼,lfEfBf“fhfE,ìŽè'O,É•\Ž!,μ,Ü,·B

f[]ffj...[][,i•\Ž!

,±,lfRf“fgf[]f<,đŽg—p,μ,Ä[]ADeskNav ,lf[]ffj...[][,i•\Ž!,Æ”ñ•\Ž!,đ[]Ø,è’Ö,!,Ü,·[]B,±  
,lfRf“fgf[]f<,ÉfAfNfZfX,·,é,É,Í[]ADeskNav ,lf^fCfgef< fo[][,đ%°EfNfŠfbfN,μ,Ü,·[]B

Â°ÛÊƒ° ,đ•\Ž!

,±,lfRf"fgf□□[f<,đŽg—p,μ,Ä□ADeskNav ,lf^fCfjf< fo□[,đ•\Ž!,Ü,½,Í"ň•\Ž!,É,μ,Ü,·□B

**fvfEfrf...[-î^æ,ð•\Ž|,•,é**

,±,lfRf"fgf□□[f<,ðŽg—p,μ,Ä□ADeskNav ,lfffXfNfgfbfv fvfEfrf...[-î^æ,ð•\Ž|,Ü,½,í"ñ•\Ž|,É,μ,Ü,•□B

**fvfCEfrf...[]l,iX[]V**

,±,lf[]fjf...[][-Ú,đfNfŠfbfN,μ,Ä[]ADeskNav ,lfffXfNfgfbfv fvfCEfrf...[]l,đ[]X[]V,μ,Ü,·[]B

## ”ä—áTfCfY•ïX

,±,lf[]jf...[][-Ú,ðfNfŠfbfN,μ,Ä[]ADeskNav ,lffXfNfgfbfv fvfCEfjf...  
[][,]•[],Æ[],,³,ª[]AŽÄ[]Ú,lffXfNfgfbfv,lTfCfY,É”ä—á,.,é,æ,κ,É[]Ý’è,μ,Û,·[]B



## İBÜİŞÜY½

,±,İfıfıf...ı[ı€-Ú,đfNfŞfbfN,μ,ÄıADeskNav ,İıY'èf\_CfAfıfO f{fbfNfX,đŞj,«,Ü,·ıB,±  
,İfRf“fıfııfı<,ÉfAfNfZfX,·,é,É,İıADeskNav ,İf^fCfıfı< foı[ı,đ%ıEıfNfŞfbfN,μ,Ü,·ıB

## fEjBj“fhfE

,±,lf□fjf...□[,đfNfŠfbfN,μ,Ä□ACE»□ÝŠJ,č,Ä,č,éfvf□fOf%of€ fEjBj“fhfE,î^ê—,đ•\  
Ž!,μ,Ü,·□BfEjBj“fhfE,đ□Ø,è'Ö,!,é,É,í□A^ê—,ì-¼'O,đfNfŠfbfN,μ,Ü,·□B-¼'O,đfNfŠfbfN,·,é,Æ□A,»,lfvf□fOf  
%of€ fEjBj“fhfE,³fAfNfefBfu,É,È,è□Af}fEfX,lf□[f<,³%œ-Ê,ì'+%>,É”z'u,³,ê,Ü,·□B



## Šg'á

, ±, lf {f^f", ðfNfŠfbfN, μ, Ä AffffBfXfvfCefC—

ì^æ, ì^ê•", ðŠg'á, μ, Ü, · B, ³, ç, ÉŠg'á, ·, é, É, Í A, à, x^ê"x fNfŠfbfN, μ, Ü, · BffffBfXfvfCefC—ì^æ, ðŠg'á, ·, é, Æ A  
%æ-É, ì^ê•", ³fjf... [—ì^æŠO, É, È, è, Ü, · B

□~2, Æ□~4, ì 2, Â, ìŠg'á/□k□~" {—!, ²Žg—p, Å, «, Ü, · BffffBfXfvfCefC%æ'œ"x, ² 800□~600, Ü, ½, Í, » , é^È  
%æ, ìêê, Í A□~4 Šg'á/□k□~" {—!, ²Žg—p, Å, «, È, ç, ±, Æ, ², , è, Ü, · B

Šg'á/□k□~" {—!, ² Å'á, ÉY'è, ³, è, Ä, ç, éêê#A'I'ð, μ, ½ffffBfXfvfCefC, ² PowerDesk fffBfXfvfCefC fhf  
%ofCfo, É, æ, Á, ÄTf|□lf, ³, è, Ä, ç, È, çêê#A, Ü, ½, Í TV □o—Íf, □lfh, ðŽg—p, μ, Ä, ç, éêê, Í A, ±, lf {f^f", ìŽg—  
p, Å, «, Ü, ¹, ñ B



, ±, ìf{f^f", ðfNfŠfbfN, μ, Ä□Afrf...□[—

ì^æ, ð□k□¬, μ, Ü, ·□B, ³, ç, É□k□¬, ·, é, É, í□A, à, x^ê"xfNfŠfbfN, μ, Ü, ·□BCE»□ÝffXfNfgfbfv, ì^ê•", ðŠg'â, μ, Ä, ç, È, ç□é□#, í□A, ±, ìf{f^f", íŽg—p, Å, «, Ü, ¹, ñ□B



## CenterWINDOW

,±,lf{f^f",đfNfŠfbfN,μ,ÄACE»ÝŠJ,č,Ä,č,évf[]fOf%of€ fEfBf"fhfE,ì^è—,đ•\  
Ž!,μ,Ü,·[]BfEfBf"fhfE,đ[]Ø,è'Ö,!,é,É,í[]A^è—,ì-¼'O,đfNfŠfbfN,μ,Ü,·[]B-¼'O,đfNfŠfbfN,·,é,Æ[]A,»,lfvf[]fOf  
%of€ fEfBf"fhfE,³fAfNfefBfu,É,È,è[]Af}fEfX,ìj[]lf<,³ffBfXfvf[]fC,ì'+%>,É"z'u,³,é,Ü,·[]B

**fifvfVf#f“**

,±,ê,ç,lfRf“fgf□□lf<,đŽg—p,μ,Ä□ADeskNav ,lfifvfVf#f“,đ•ï□X,μ,Ü,·□B

## °Å°,É"z'u

DeskNav fEfBf"fhfE,ðfrf...[-ì^æ,ì"C^Ó,ìêŠ,É•Ž,³,¹,Ä,".,É,ÍA,±,ìf`fFbfN f{fbfNfX,ðfIf",É,μ,Ü,·B  
,±,ì<@"\,ª—LŒø,É,È,Á,Ä,ç,é,Æ,«,ÉADeskNav  
fEfBf"fhfE,ð•É,ìêŠ,É^Ú"®,μ,½,çê‡,ÍAfEfBf"fhfE,ð"C^Ó,ìêŠ,Éfhf  
%ofbfO,·,é,¾,¯,ÅAfEfBf"fhfE,ð,»,ìêŠ,É "'z'u" ,Å,<,Ü,·B

**DeskNav ,đf}fEfX f|fCf“f^,ì^È'u,ÉCEÁ'è,·,é**

f})f<f` fffBfXfvfCEfC fffXfNfgfbfv,đŽg—p,μ,Ä,ç,éêëë,íA,±,ìf` fFfbfN f{fbfNfX,đflf“ ,É,μ,ÄAf}fEfX,ìj□[f\ f<,ª ,éffBfXfvfCEfC,É DeskNav fEfBf“fhfE,ªŽ©“@“l,É^Ú“@,·,é,æ,κ,ÉY'è,μ,Ü,·□B

,±,ì<@“\,íAf}f<f` fffBfXfvfCEfC fffXfNfgfbfv,đŽg—p,μ,Ä,ç,ÄAfR□[fi□[,É”z'u ,ª—LCEø,É,È,Á,Ä,ç ,éêëë,É,ì,ÝŽg—p,Å,«,Ü,·□B



frf...[-i^æ,ð•iX,μ,½,Æ,«,ÉAf}fEfX fjCf“f^,ð't%o>,É•Ž!,•,é

,±,lf`fFbfN f{fbfNfX,ðlf“,É,μ,ÄAMatrox fY[f€<@“\,iŽg—p’t,ÉADeskNav ,lffXfNfgfbfv fvCEfrf...  
[-l,lf rf...[-i^æ,l'•ûCE`ð^Ú“@,•,é,ÆAf}fEfX,lj[f<„t%o>,É”z'u,³,ê,Û,·Bf}fEfX,lj[f\  
f<,lA^Ú“@,μ,½frf...[-i^æ,l't%o>,É”z'u,³,ê,Û,·B

## ”ä—áTfCfY•ïX

,±,lf`fFbfN f{fbfNfX,ðflf“,É,μ,ÄADeskNav ,lffXfNfgfbfv fvjEfrf...  
[][,]•,Æ,,³,ªAZÀÙ,lffXfNfgfbfv,lTfCfY,É”ä—á,·,é,æ,κ,ÉY’è,μ,Û,·B

**ffXfNfgfbfv,lfXfifbfvVf#bfg,ð•Ž!,·,é**

,±,lf`fFbfN f{fbfNfX,ðfif“,É,μ,ÄADeskNav ,lffXfNfgfbfv fvjCEfrf...[]ÅAWindows fffXfNfgfbfv,lfXfifbfvVf#bfg" ,ð•Ž!,μ,Ü,·B

fXf%ofCf\_ð“®,©,μ,ÄAfVfCEfrf...[]ì  
%œŽž,ð’²® ,μ,Ü,·BffXfNfgfbfv,lfXfifbfvVf#bfg,ð, %œŽž,É,·,é,ÆAfVfXfef€,lfpftfH[]f}f“fX,ª’á  
%º,·,é,±,Æ,ª, ,è,Ü,·B

**ffXfNfgfbfv,lfXfifbfvVf+fbfg,Å DeskNav ,ð%°B,·**

,±,lf`fFfbfN f{fbfNfX,ðfif“,É,μ,Ä□ADeskNav ,lfXfNfgfbfv fvjCEfrf...□[.Å□ADeskNav fEfBf“fhfE,ð”ñ•\  
Ž!,É,μ,Ü,·□B

,±,lf`fFfbfN f{fbfNfX,í□A**ffXfNfgfbfv,lfXfifbfvVf+fbfg,ð•\Ž!**,·,é ,<sup>a</sup>—LCEø,É,È,Á,Ä,ç,é□ê□±,É,ì,ÝŽg—  
p,Å,«,Ü,·□B

## Ž © “ ® “ I, ÉffXfNfgfbfv, ìXfifbfv fVf#fbfg, ð X V

, ±, ìf`fFbfN f{fbfNfX, ðfìf“, É, µ, Ä A ffXfNfgfbfv fvfCEfrf... [ ìXfifbfvVf#fbfg, ð'èŠú“ I, É X V, µ, Ü, · BfXf %ofCf\_ ð “ ®, ©, µ, Ä A ffXfNfgfbfv, ìXfifbfvVf#fbfg, ð X V, ð, è, é % ð ñ “, ð'² X ®, µ, Ü, · BffXfNfgfbfv fvfCEfrf... [ ìXfifbfvVf#fbfg, ð • p “ É, É X V, ·, é, Æ A fVfXfef€, ìpftfH [f}f“ fX, ð'á % ð, ·, é, ±, Æ, ð, è, Ü, · B

, ±, è, ç, ìRf“fgf [f<, Í A ffXfNfgfbfv, ìXfifbfvVf#fbfg, ð • Ž !, ·, é, ð — LCEø, É, È, Á, Ä, ç, é è ð †, É, ì, Ý Ž g — p, Ä, «, Ü, · B



,ìĈ<%oÊ

,±,ìf{fbfNfX,É,í□AfefXfg,ìĈ<%oÊ,ª•\Ž|,³,ê,Ü,·□B

**fejXfgŽÄ□s**

,±,lf{f^f“,đfNfŠfbfN,μ,Ä□A'I'đ,μ,½fejXfg,đŽÄ□s,μ,Ü,·□B



ŽÀs, .éfefXfg,đ'í'ð,μ,Ü,·B

ÁV,ì DirectX f\ftfgfEjFfA,ífCf“fXfg[f<,³,ê,Ä,ç,Ü,·,©?

,±,ìf`fFfbfN f{fbfNfX,ðflf“,É,μ,ÄAMicrosoft DirectX f\ftfgfEjFfA,ìfefXfg,ðs,ç,Ü,·B

fvf[]fOf%of€,É,æ,Á,Ä,ÍA³í,É“@ì,·,é,½,ß,ÉAÄ<ß,ìfo[]fWfþf“,ì DirectX ,ª•K—  
v,Èê[]ª,ª, ,è,Ü,·BÄ<ß,ìfo[]fWfþf“,ì DirectX ,ªfCf“fXfg[f<,³,ê,Ä,ç,È,ç,ÆAMatrox PowerDesk ,ì<@“\  
,ì^ê•”,ªŽg—p,Ä,«,È,ç,±,Æ,à, ,è,Ü,·B

(•\Ž!fAfNfzf%ofCE[fVf:f“—p,ì)fofX f}fXf^fŠf“fO,í“® ,μ,Ä,č,Ü,·,©?

,±,ìf`fFfbfN f{fbfNfX,ðfì“,É,μ,ÄAfofX f}fXf^fŠf“fO,ìfefXfg,ðs,č,Ü,·B

ŠÖ~A€-Ú...

∅ fofX f},“f^fŠf“fO ,ðs,č

• È, ì Matrox frfffl • Ò Wfj [fh, ðfCf "fXfg [f<, μ, Ä, ç, Û, ·, ©?

, ±, ìf`fFfbfN f{fbfNfX, ðfìf", É, μ, Ä, AŽg—p, μ, Ä, ç, éfRf"fsf... [f^, É'¼, ì Matrox frfffl fLffvf`ff  
fj [fh, ðfCf "fXfg [f<, ð, Ä, ç, é, ©, Ç, x, ©, ðf`fFfbfN, μ, Û, · B1 'à, ìfRf"fsf... [f^, Ä, í A1 , Ä, ìfrrffl fLffvf`ff  
fj [fh, ðfTf| [fg, ð, é, Ä, ç, Û, · B


**fAfhflf“ fOf%oftfBfbfNfX f[]f,fŠ,lf,fWf...[]f< (, ,é[]ê[]†),í[]“® ,μ,Ä,č,Û,·,©?**

,±,lf`fFfbfN f{fbfNfX,đflf“,É,μ,Ä[]AfAfhflf“ fOf%oftfBfbfNfX f[]f,fŠ,É (, ,é[]ê[]†)[]AŽg—p,μ,Ä,č,éfOf  
%oftfBfbfNfX fj[]fh,lf[]f,fŠ,Æ,ìCEYŠ·[]«,ª, ,é,©,Ç,¤,©,đfefXfg,μ,Û,·[]B



## Úxîñ

---

fwf<fv fgfsfbfN,É,ÍAfRf“fefLjXfg fwf<fv, ©,ç,μ,©fAfNfZfX,Å,«,È,ç,à,ì,ª, ,è,Û,·B—~—p%oÅ“\,ÈfRf“fefLjXfg  
fwf<fv,ð•\Ž!,·,é,É,ÍAf\_fCfAfO f{fbfNfX,ìf^fCfjf< fo[.É, ,é  f{f^f“,ðfNfŠfbfN,μAfwf<fv,ð•\  
Ž!,μ,½,ç€-Ú,ðfNfŠfbfN,μ,Û,·B

Úx,É,Â,ç,Ä,ÍAMatrox QuickDesk () à fwf<fv à **Readme ftj@fCf<,ð•\Ž!**,ðfNfŠfbfN,μ,Ä,,¾,³,çB  
SÖ~A€-Ú...

∅ [Matrox QuickDesk](#)

## ffj%o[]fjpfCEfbfg

fffBfXfvfCEfC fhf%ofCfo,ª“~Žž,É•\Ž!,Å,«,é□F□”,Å,·□B,±,ì□”,í□AšefsfNfZf<,ì□F□î•ň,đ•ÚŠÇ,·,é,½,ß,ÉŽg—  
p,³,è,éfrfbfg□”,ÉŠî,Ã,ç,Ä,ç,Ü,·□Bfrfbfg□”,ª¹½,ç,Ü,Ç□AfffBfXfvfCEfC fhf%ofCfo,ª“~Žž,É•\Ž!,Å,«,é□F□”,ª¹½,-  
,É,è,Ü,·□B

'□: Matrox fn□[fhfEfFfA,Å 3D fAfNfZf%ofCE□[fVf†”,đŽg—p,Å,«,é,ì,í□A16 frfbfg,Ü,½,í 32 frfbfg,ìjff  
%o[] fpjCEfbfg,ì,Ý,Ä,·□B

ŠÖ~A□€-Ú...

∅ [fsfNfZf<](#)



## Ä½, Ä`İB—İ^æ

fEfBf"fhfE•\Ži,đŠC—□,μ,Ä,ç,élfyfCE□[fefBf"fo fVfXfef€,ììi·Æ—İ^æ'S'ì,Å,·□B

f}fçf` fffBfXfvfCEfC fffXfNfgfbfv,đŽg—p,μ,Ä,ç,é□ê□†,í□AfffXfNfgfbfv—İ^æ,É•;□",ìfffBfXfvfCEfC—  
İ^æ,ªŠÜ,Ü,ê,Ü,·□Bf}fçf` fffBfXfvfCEfC fffXfNfgfbfv,đŽg—p,μ,Ä,ç,È,ç□ê□†,í□AfffXfNfgfbfv—  
İ^æ,ÆfffBfXfvfCEfC—İ^æ,ª,Ü,Ü"" ,¶,É,È,è,Ü,·□B

ŠÖ~A□€-Ú...

∅ Ä"½İBÚ²—İ^æ

∅ •;□"Ä"½İBÚ²Ä½, Ä`İB

## Äb½ìßÚ²—ì^æ

fEfBf“fhfE•\Žì,ðŠÇ—□,μ,Ä,ç,élfyfCE□[fefBf“fO fVfXfef€,ìffBfXfvfCEfC,ìì<Æ—ì^æ,Å,·□B

f}fçf` fffBfXfvfCEfC fffXfNfgfbfv,ðŽg—p,μ,Ä,ç,é□ê□‡,í□AfffXfNfgfbfv—ì^æ,É•;□”,ìffBfXfvfCEfC—  
ì^æ,ªŠÜ,Ü,ê,Ü,·□Bf}fçf` fffBfXfvfCEfC fffXfNfgfbfv,ðŽg—p,μ,Ä,ç,È,ç□ê□‡,í□AfffXfNfgfbfv—  
ì^æ,ÆfffBfXfvfCEfC—ì^æ,ª,Ü,Ü““,¶,É,È,è,Ü,·□B

'□: fffBfXfvfCEfC,ìÝ'è,ð•ì□X,·,é,É,í□AWindows fffXfNfgfbfv,ì“wCEi,ð%EfNfŠfbfN,μ□Afvf□pfefB a □Ý'è  
,ðfNfŠfbfN,μ,Ü,·□BWindows 95 ,ÅfffBfXfvfCEfC—ì^æ,ð•ì□X,·,é,É,í□AfffXfNfgfbfv—ì^æ ,ìfXf  
%ofCf\_ð“® ,©,μ,Ü,·□BWindows 98/2000 ,Å,í□A%æ-Ê,ì—ì^æ ,ìfXf%ofCf\_ð“® ,©,μ,Ü,·□B

ŠÖ~A□€-Ú...

- ∅ [Äb½, Ä-ìß—ì^æ](#)
- ∅ [fffBfXfvfCEfC %øð'æ“x](#)
- ∅ [•;□“Äb½ìßÚ²Äb½, Ä-ìß](#)

## ffBfXfvfCfC f,[]fh

ffBfXfvfCfC%øđ'œ"x,Æff%[][ fpfCfCfCfCg,ì'g,Ý[]#,í,¹,Å,·[]B

ŠÖ~A[]€-Ú...

ø [1x° ÊßÚ~Ä](#)

ø [ffBfXfvfCfC %øđ'œ"x](#)

## ffBfXfvfCfC %ođ'œ"x

ffBfXfvfCfC,É•\Ž!,³,é,é...•½•ûCEü,Æ,¼•ûCEü,ìsfNfZf<“,Å,·B,½,Æ,!,îA640~480 ,ìffBfXfvfCfC  
%ođ'œ"x,Á,íA•,ª 640 fsfNfZf<,Å,,³,ª 480 fsfNfZf<,É,È,è,Û,·BffBfXfvfCfC%ođ'œ"x,đ,,,-  
,·,é,Û,ÇAÚÚx,É•\Ž!,Å,«,é,æ,æ,É,È,è,Û,·B

ŠÖ~A€-Ú...

∅ [fsfNfZf<](#)

• **“ffBfXfvfCfCffXfNfgfbfv”**

• “”,lffBfXfvfCfC,É,æ,Á,Ä•\Ž!,³,é,éffXfNfgfbfv,Á,·B

Windows 98/2000 ,Á,íA•;” ,lfOf%oftfBfbfNfX fj[fh,Ü,½,í 1 ,Á,lf}fç`f,fjf^ fOf%oftfBfbfNfX  
fj[fh,³fRf“fsf...[f^,ÉfCf“fXfg[fç,³,é,Ä,ç,é,ÆAf}fç` fffBfXfvfCfC fffXfNfgfbfv,ðŽg—p,Á,«,Ü,·B•;” ,ì  
Matrox fOf%oftfBfbfNfX fj[fh,lf,fffç,³fhf%ofCfo,É,æ,Á,ÄTfj[fç,³,é,Ä,ç,éèè±,íA“ ,¶ Matrox PowerDesk  
ffBfXfvfCfC fhf%ofCfo,É,æ,Á,ÄAŠefj[fh,ðfRf“fgf[fç,Á,«,Ü,·BÜx,É,Á,ç,Ä,íAWindows 98/2000  
,lfwfçfv,ðŽQ/E,µ,Ä,,³/4,³,çB

’ : Windows 95 ,Á,íAf}fçffBfXfvfCfC f, [fh,lfTfj[fç,³,é,Ä,ç,Ü,¹,ñB

ŠÖ~A€-Ú...

- ∅ [Äp½, Ä`ìß—ì^æ](#)
- ∅ [ffBfXfvfCfC—ì^æ](#)

**fsjNfzf<**

fffBjXfvfCEfC,É•\Ž!,Å,«,éÅ□¬,ì—v'f,Å,·□B



