

A *FontPack* is a collection of fonts which you can create. It is used to install or uninstall multiple fonts all at one time.

The *Print List* is a list of fonts waiting to be printed.

The *ASCII value* is a number (starting with zero) which is used to represent any character in the font. For example, the letter "A" has an *ASCII value* of 65, "B" is 66 and so on.

You can use this number to directly enter special characters not available from your keyboard into an application by holding down the ALT-key and typing the number, preceded by a zero. So, an "A" would be: ALT-key 065, and the Copyright symbol would be: ALT-key 0169. You must enter the numbers using your keypad.

Welcome (Requirements)

Your Computer

To use MyFonts, a Pentium-class computer and a video card configured for 16-bit color (HiColor) or 24-bit color (TrueColor) are preferred. Using anything less than a Pentium-class machine will work as well but the program will run *very slowly*.

Windows

MyFonts is a 32-bit application so you must be using either Windows'95, Windows'98 or Windows NT 4.0. Our software should work just fine with *any* future releases of Windows but, if you encounter any problems, please call us at: 314-770-2770 or e-mail us (our e-mail address is: MyFonts@MyTools.com) so we can take care of whatever problem you might encounter.

Welcome (Installation/Removal)

Installing MyFonts

After installing MyFonts, we recommend you take just a few short minutes to quickly browse through the Help file before running the program. It will be time well spent.

This is probably the easiest program you will ever install in Windows. There is just one file, Setup.exe, which you can put into any folder you choose. How much easier can it get, right?

Now either double-click on Setup.exe or select it from the Run Option (click Start, then Run from the Taskbar).

What the installation program does:

First, it extracts itself to the Windows temporary folder. Then it automatically installs MyFonts to "c:\MyFonts" and adds the correct menu selections for you.

Removing MyFonts

It's easy: Simply select the "Uninstall MyFonts Now" option from the Start Menu.

Alternate Method: Click Start, then Settings, then Control Panel from the Windows Taskbar. Double-click on the "Add/Remove Programs" icon. Select "MyFonts Windows Font Manager" then click the "Add/Remove" button.

We have chosen not to remove our Registry entries because you might be removing MyFonts simply to re-install an upgrade, for example, in which case you would probably be sending "Bruno" to visit us when you found out all of your settings had vanished (it would be Bruno's job to see to it that we vanished as well -- yikes!).

If you really *are* removing MyFonts permanently (hmmm, maybe we should send Bruno to visit *you!*) then you should take a look at the [Windows Registry](#) topic since it explains how we have modified the Registry. If you still want to remove all traces of MyFonts after reading this section then you can use RegEdit (which comes with Windows) to send us into oblivion.

We hope you'll like MyFonts enough so this will never be necessary.

Welcome (Getting Started)

This Help file is accessible anywhere within MyFonts by pressing the F1 key. You should then see Help relevant to the area of the program in which you are working.

PRINTED DOCUMENTATION:

If you prefer to get a printed copy of this entire Help file -- about 30 pages -- click this button:

{button Print Documentation

```
Now,IF(InitMPrint(),`MPrintId(`hpad998'):MPrintId(`hpad100'):MPrintId(`hpad110'):MPrintId(`hpad120'):MPrintId(`hpad130'):MPrintId(`hpad131'):MPrintId(`hpad132'):MPrintId(`hpad133'):MPrintId(`hpad140'):MPrintId(`hpad150'):MPrintId(`hpad160'):MPrintId(`hpad170'):MPrintId(`hpad180'):MPrintId(`hpad190'):MPrintId(`hpad200'):MPrintId(`hpad201'):MPrintId(`hpad210'):MPrintId(`hpad211'):MPrintId(`hpad250'):MPrintId(`hpad251'):MPrintId(`hpad260'):MPrintId(`hpad261'):MPrintId(`hpad300'):MPrintId(`hpad280'):MPrintId(`hpad999'):EndMPrint());JI(`hpad120');
```

What is MyFonts?

MyFonts is a [shareware](#) Font Management System designed for all 32-bit Windows. But don't let the word "shareware" fool you. MyFonts is a first-rate application which equals or surpasses any retail package. So, with all that money you save, we really hope you decide to part with some of it and [register MyFonts](#).

What Can You Do with MyFonts?

With MyFonts, you can view or preview all of your TrueType® and Postscript Type 1 fonts in any size all the way up to 99 points with the widest degree of flexibility. Powerful filters help you separate and identify any font (and its source file). Fonts do not have to be installed. MyFonts enables you to work with uninstalled fonts directly from your disk or CD-ROM.

Powerful printing capabilities will produce some of the very best specimen sheets in the industry. Create handy catalogs of all your fonts, or special pages using the included point-and-click templates, such as the "Grid Template" which prints every character in your font (shows exactly what key combinations are needed for selecting symbols from dingbat or wingding-type fonts).

Easy-to-use font management tools help you to install or uninstall fonts, individually or in [FontPacks](#), with a high degree of flexibility. You can even install fonts directly from your CD-ROM, saving precious hard disk space. Now that's freedom of choice!

Plus many more features, like saving font samples as bitmap files which can later be used in almost any Windows application.

Getting Started

If you want to "jump right in" and start using MyFonts right away without reading any of this great documentation (that we stayed up nights making just for you) then go right ahead. There is plenty of real-time help built into the application so you may never have to read this anyway (do you *really* believe that?). Of course, you might miss some of the less obvious features but you can always come back to this document anytime... it will not self-destruct, we promise. It's your choice.

By the way, we've tried to make reading this document as interesting (and maybe even fun) as possible while still giving you the info you need to master your font needs. We hope the humor doesn't offend or get in the way of understanding the application.

Limitations in Shareware Version

Some limitations exist in the [shareware](#) version of MyFonts. Ideally, it would be wonderful if the product could be distributed without these but, from first-hand experience, we can testify for a fact that only a handful of people would really send in their registrations. We tried it... but that's another story.

Some limitations include:

- 1. Printing limited to one page at a time.**
- 2. FontPacks limited to 3 active at one time.**
- 3. Diagnostics functions limited.**

Although the shareware version is not as convenient to use as the fully registered version, every function is available and operational, even if you never send us a dime. Until registered, MyFonts will run for 30 minutes at a time with an additional 10 minute grace period (an advisory message will be displayed). You can restart and use MyFonts an unlimited number of times each day but usage will be limited to 30 minutes each time.

Registration will, of course, remove all limitations... and make my day!

Register Today (Feel really great!)

Why Should You Register?

Because it will make you feel really good, that's why. You'll become a member of a very small percentage (less than 2%) of people who actually register. It keeps us in business hopefully making more useful stuff to sell you. And, maybe even because the software is *really worth* the small price we're asking (at least, we hope you think so).

What is our Upgrade Policy?

If you are honest enough to register then we will do our part by keeping MyFonts up to date for you *and it won't cost you a penny!* That's right. [Updates to MyFonts are free.](#) All you have to do is visit our web site and, if you see a more recent version, simply download it and put it into the same folder in which you had previously installed MyFonts. Doing so will replace the older version while retaining any data files which may have previously been created.

An update is a new version of the program within the same whole-number revision. So, for example, if you register version 2.0 then 2.1, 2.2, etc would be free.

When some major event occurs which forces us to make major changes to the product then we will issue a new whole-number revision. An example of this is when Windows'95 was introduced. The platform was so different we had to re-write the program completely. A time-consuming task. Another example is when some new feature is added which *substantially* changes the product. These types of significant changes require us to issue an *upgrade* which is not free.

In the past, we have *always* offered product upgrades to our past customers at about half-price. Your payment helps keep our business healthy and insures someone is here to answer your questions promptly. We think this is both fair and reasonable. We hope you with agree us.

What is "Shareware"?

The short answer is: "it's how we get to eat!". You get the opportunity to try the software for 30 days to see if it really meets your needs *without paying anything*. Then, if you decide you would like to get the full version, you register it.

"Register" is another word for "buy". But not too many shareware authors use the word "buy" -- we don't know why, it's only 3 letters -- so instead, you see the word "register" a lot. The bottom line is you get to send us some money and, in return, you get a fully registered version of the software (then we run out a buy a pizza).

To help you make up your mind and send us your money, the program will remind you that *we really like pizza* by limiting some of its functions. So, it's not as convenient to use as the fully registered version. But, every function is available and operational, even if you never send us a dime.

How to Register

It's easy. Just click the flashing "Order Now" button from the MyFonts Welcome screen. From there you can print out a Registration Order Form or even send in your order via e-mail if you have a major credit card.

But, hey, why wait? If you're reading this and want to register by phone or mail then here's how to do it:

Credit Card orders: Call us at 314-770-2770 (voice or fax). Visa/MasterCard or American Express only (we're a *very* small company). You will need to supply your credit card number, expiration date, name and address (including country).

Please do not fax questions (we cannot reply by fax). If you have questions just call the same number or click on the "E-mail Support" button from the MyFonts Welcome screen. Support is always free.

Everyone else: Send \$35 (cash, check*, or money order) for Email delivery or \$39 for world-wide postal delivery to:

UniTech / MyTools.com
2697 McKelvey Road
Maryland Heights, MO 63043 USA

*Checks must be drawn on a U.S. bank, no Euro-checks please. The reason is our bank charges us \$18 just to cash them. If you live outside the U.S. your bank can help you with this.

Our Internet addresses:

E-mail is MyFonts@MyTools.com
Web site is www.MyTools.com

Activate Registration

After Registration:

If you ordered delivery via Email then you will receive a file along with instructions. These instructions are repeated here for reference:

1. Please unzip the attached file and place its contents (the license file named MYFONTS.LIC) into the same directory (folder) in which you installed MyFonts.

2. Make a backup copy by placing the license file onto a diskette in case you need it in the future.

3. Check my web site to make sure you have the latest version of MyFonts. You can always download (for free!) the latest version of MyFonts from my web site which is located at:

www.MyTools.com

If you ordered delivery via postal service then you will receive a diskette. Always reinstall the software, since the diskette will contain the latest version. After installing, copy the license file (MYFONTS.LIC) from the diskette to the folder you installed MyFonts into on your hard disk.

Free Software

For Registered Users Only:

After registering and installing your license file, you can download and use all the neat FREE utilities on my web site. These utilities will only work for registers users and can *only* be found at this web site:

www.MyTools.com

The free software is my way of saying "Thank you" for helping me stay in business (you can continue to help by telling a few friends about my software -- I can use all the help I can get!).

You need to *run the registered version of MyFonts at least once* for the free software to work. If you later run an unregistered version of MyFonts then the utilities will stop working until you have used a registered version again. *You do not need to run MyFonts* each time before using the free software.

Important Tips (CD-ROM)

Note: *This information is not required to run MyFonts, but we have found MyFonts performs best when the following suggestions are followed.*

About CD-ROMs

If you haven't noticed yet, CD-ROMs are slow! Even the 12x or 32x drives are *much* slower than your hard disk. If you intend to print font specimen sheets directly from CD's then expect to do a lot of waiting for your documents. If you have the room you might consider moving your font files to a temporary folder (directory) on your hard disk, print them, then delete the files. Of course, if you just want to print a few selected fonts then there's no problem and you can certainly use MyFonts to print directly from the CD.

Important Tips (Printer)

Note: *This information is not required to run MyFonts, but we have found MyFonts performs best when the following suggestions are followed.*

About Your Printer

The most common problem, by far, is trying to print many *un-installed* fonts with the Windows Print Spooler turned on. Turn the print spooler off! It only slows down printing and, because of the massive amount of font data, consumes gigantic amounts of disk space.

More to the point, unlike printing from a word processor (whose fonts are *always* installed), this software prints fonts by first installing them into memory, then printing them, and then uninstalling them. That means the printing must occur in real time. If you are using a print spooler then by the time the spooler gets around to printing the font it may already have been uninstalled (and is gone). This usually results in the printer printing a generic-looking font instead of the font you wanted.

We'll say it again: Turn the print spooler off!

Making a Copy of Your Printer Driver

Many people simply make another printer driver and apply the changes to it rather than changing their current driver. It's up to you, but this would give you the most flexibility and it is recommended. Navigate to your printer driver (in Win95/98 or NT: click *Start*, then *Settings/Printers*). Select *Add Printer*, and create a second copy of the printer driver you use or intend to use with MyFonts. Remember, you are making another copy of your printer driver not replacing it. Give it a name like "MyFonts Printer" or "Print Direct". Make the changes listed below to this driver. By the way, you will find this new driver most useful especially when printing from any graphics program.

Turning Off Your Print Spooler

Navigate to your printer driver or, if you made a new driver as recommended above then navigate to your new printer driver (in Win95 or NT: click *Start*, then *Settings/Printers*). Right-click on your printer icon and select *Properties*. From the tabbed dialog, click on the *Details* tab, then click on *Spool Settings*. Select the option which says "Print Directly to Printer" or similar words. That's all there is to it. Easy!

And, while you're at it . . .

Some (not all) printer drivers can also accept two more modifications. Make these changes if your printer driver has the options:

Print TrueType as Graphics: Click on the printer driver's *Fonts* tab. Select this option if available. Most printers have this option and, if your does, *it is important that you make this change*.

Print Raster Graphics: Click on the *Graphics* tab. Select Raster graphics instead of Vector graphics if your printer has this option (not all do).

Some Fonts Print Small Squares Instead of Correct Characters

This may occur in all point sizes or in just certain sizes. It is a Microsoft TrueType problem and is described in their publication PSS ID number Q94715 entitled "Cannot Print Ornate, Complex TrueType Fonts". A better title would have been "Cannot Print Cheap Fonts" because that's usually the cause of the problem. The publication should be available from Microsoft at no charge if you are interested in reading boring stuff. In any event, MyFonts is doing its job when it prints specimen sheets which reveal problems like this (these fonts can be given early retirement -- get rid of 'em).

Important Tips (Video)

Note: *This information is not required to run MyFonts, but we have found MyFonts performs best when the following suggestions are followed.*

About Video Cards

If you are using a video accelerator board and experience problems running MyFonts, or if MyFonts won't run at all, then the source of the trouble may be your *video driver!* Try another driver. Maybe there's a more recent release from the manufacturer, or you can try any of Microsoft's native drivers which seem to work amazingly well (and come free with every copy of Windows). There is an interaction between the memory address of video drivers and [printer drivers](#), so if you experience trouble then you'll need to adjust either one or both of your drivers.

Other publications you might want to look at include PSS ID number Q115596 entitled "Problems with TrueType Fonts and Diamond Video Drivers" and PSS ID number Q85286 entitled "Checklist for Troubleshooting TrueType Font Problems". Each of these papers should be available from Microsoft at no charge.

Using MyFonts (Making Backups)

First Time Backup

When you run MyFonts for the first time, a complete backup is made of all your installed fonts automatically. The backup is in the form of a [FontPack](#) which can be used to re-install or restore your installed fonts to the way they were before you ever ran MyFonts.

Updating Your Backup

As mentioned above, the backup for your original installed fonts is automatically created for you in the form of a FontPack. This FontPack is saved in the MyFonts folder with the file name DEFAULT.MFP.

You can update this backup simply by deleting the file. MyFonts will re-create the backup file for you automatically the next time it is run. As long as this file is present in the MyFonts folder then your original font information will be preserved.

Why would you want to update your backup? Here are a few multiple choice answers:

1. Because it's really cool to watch the new file created.
2. Because you have nothing else to do.
3. Because you have moved some of your font files, so the original backup no longer reflects the font files available on your system.
4. Because you have changed your default font setup and want to be able to restore to this condition any time you feel it necessary in the future.

If you picked items 3 or 4 then *congratulations!* If you picked items 1 or 2 and continue to run this program you do so at your own risk <grin>.

Using MyFonts (Welcome screen)

First Impressions Are Important

MyFonts could have been packaged in a much smaller file size if we left out all the graphics, animations and sounds. But we wanted to make a product which was state-of-the-art. When you place the mouse over objects, they light up. All actions take place immediately with just one mouse click (forget all that double-clicking stuff). Animation and sound add interest and provide visual and audible feedback.

Support, Always Free

Whether you register MyFonts or not, support is always free and just a click away. You can access our phone number, send us e-mail, or visit our web site -- all from the *Welcome* screen.

The Most Important Button

Click the flashing *Order Now* button to [register MyFonts](#) (that's why it is the most important button). From here, you can print a Registration Order Form or register immediately via the Internet, if you wish.

Our Web Site

If you have Internet access you can visit our web site at any time by simply clicking the *Web Site* button.

Window Shade Button

At the top right corner of the title bar is a button with up-down arrows (not something you normally see in other applications). Clicking this button rolls up MyFonts (like a window shade). Click it again to roll it back down. It's a convenient way to keep MyFonts open while accessing something else.

Using MyFonts (Setup)

Popup Balloon Help

Besides this help file, which is available at anytime in the program by pressing the F1-key, MyFonts also offers extensive instant help in the form of popup cartoon-style balloons. Whenever you position your mouse over an object the balloon help will popup (if available) depending on how you configure it.

You can select the amount of seconds to delay before showing help, and the amount of time to display it for. After you learn the program, you can turn it off completely (it *can* become a distraction after a while).

Using Sounds

With all the money you probably spent on getting a computer capable of playing really cool sounds, we thought you would appreciate our including sound support into MyFonts.

On the other hand, if the sounds are distracting or you just don't like them you can turn them off by un-checking this option.

Clock

No big deal here. For people who need to keep track of time (so they don't get wrapped up by this really great utility), we have included a simple clock in the upper right-hand corner of the screen. If you don't care about time (or don't want to know) then just un-check this option.

Save Screen Position

When this option is selected MyFonts will remember its position on the screen and will return to that position the next time it is run. If you un-check this option then MyFonts will always start in the center of your screen.

Relax TrueType Validation

MyFonts compares every font it uses against published official TrueType specifications and strictly follows them. If the font fails to meet specifications then it is not used.

This can be a good thing or a bad thing depending on your point of view. We think following the specs in the long run is much better than not since it assures the fonts you intend to use were made in accordance to TrueType recommendations.

A point of confusion is Microsoft *sometimes* fails to follow the specifications themselves (which is a shame). So, some fonts which really do not meet specs can currently be used in Windows but this is no guarantee the same fonts will work in future versions of Windows.

We have included the option to relax TrueType validation in MyFonts so that the widest possible flexibility is afforded to font usability. If you are trying to identify only quality fonts then turn this option off. If you want to use just about any kind of font then keep this option turned on and, if it's even remotely possible, MyFonts will use the font.

Default Font Folders

MyFonts automatically detects and sets the default location (where your font files are kept) for both TrueType and Adobe Type Manager (ATM) fonts. If, for whatever reason, you would like to use a location different from the default location then you can click the *Change* button (for TrueType fonts) and set the desired location as you see fit. Adobe Type Manager can be used to change the default font locations for Postscript fonts.

Adobe Type Manager (ATM) Support

Indicators showing whether or not Adobe Type Manager (ATM) is installed and which version you have, if any, are located just above the Postscript default font folders. ATM is a software driver which is required

to display Postscript fonts in Windows. MyFonts detects and automatically supports ATM if it is installed on your system.

Using MyFonts (Viewing Fonts)

[Click here](#) to see an explanation of each component on the Viewer screen.

Using the Viewer

Actually, you will probably find using the Viewer to be extremely easy and intuitive. But before using it, let's take a look at the setup options available for the Viewer.

Options Tab

Click on the *Options* tab (accessed from the Viewer screen). These are the options available to you:

Add/Remove Text Sample: The drop-down listbox contains all the specimen text available to you. You can add your own text simply by clicking in the edit area and typing your text (then press the *Enter-key*, of course). To remove, just select the text sample you want to get rid of and click on the *Remove Text Sample* button.

Special Codes: When entering your specimens, there are two special codes you can use to help get just the effect you want:

- If you enter the 3 characters "<F>" (no quotations) anywhere in your text then this code will be replaced with the font's full name when you view your specimen.
- If you enter the 3 characters "<+>" (no quotations) anywhere in your text then this code will be replaced with a new line (like pressing the enter key).

We have included an example specimen which starts with "<f>. Typography..." -- this sample uses both of the above codes. You can see the effect using a smaller point size (try 14 point).

Send To Printer: You can print the specimen being displayed in the Viewport immediately or elect to delay printing and print it later. You can print it later by leaving the Viewer and going to the Printer screen. Your specimen will be waiting there for you to print it.

If you use the *Print Immediately* option the sample will be printed using a pre-determined template. The template is always the same. You can change this template by selecting a different one from the Printer screen. This is explained in more detail in the Printer section.

The *Send To Printer* button is here as a way to get a quick 'n' dirty print sample. Much more powerful printing options are available from the Printer screen.

Reset All Viewer Options: Clicking this button will restore all options to the factory (initial) settings.

Viewing Installed Fonts

Click on the *Installed Fonts* tab. If you scroll up and down the list you'll notice each font is identified with an icon showing the type of font it is. The possible icons are:

TT-icon: for TrueType fonts.
PS-icon: for Postscript fonts.
Monitor-icon: for Screen (Raster) fonts.
Question-icon: Heck, we don't know what it is!

Filters: Below the font list are three filters which can be used to include or exclude font types. They are *Show TrueType*, *Show Postscript*, and *Show Other*. To the right of these is an LED which shows the total number of fonts in the listbox. For a total of all installed fonts you must have all three filters checked on, otherwise the total reflects the fonts you have elected to include in the listbox.

Font Samples in Listbox: Below the three filters is a checkbox which toggles how the font names will be listed. If *Checked Off* then the names will be listed in a plain font. If *Checked On* then the names will be

listed using the font's own style. Using a plain font results in a much faster display.

Finally, to view the font all you have to do is click on any of the listed font names. Piece of cake!

Viewing Font Files and Previewing Uninstalled Fonts

Click on the *Font Files* tab. Before you can view font files you need to select which folder to use. Click on the *ABC Font Files* button. A dialog pops up with your default font folder already selected for you.

Select Font Folder Dialog: You will notice the folders are all shown in red. Navigate through the folders until you reach the one you want then click the *OK* button. Notice that the dialog has a filter which you can use to limit the font type, and a listbox showing the font file names in the current folder along with the total font files in the folder. All of this is here to help you select the exact folder you want.

Auto-Scan Entire Hard Disk: If you are too lazy to navigate from folder to folder or just don't know where your fonts are located then MyFonts can find all the folders on your hard disk which contain font files automatically. Simply click the *Search* button and in just a few seconds you'll know exactly how many fonts are on your hard disk and what folders they're in. Now all you have to do is click on any of the listed folders to see the font files. To search another hard disk simply select the drive and search again.

After selecting the folder you want, all you have to do is click on a font file to see a sample of the font. The [Information Panel](#) shows the font's full name, description, and font file location. In addition, it also tells you (in *red text*) if this font is already installed in your system or not.

Viewing Fonts Using Auto-view

At the bottom of the *Installed Fonts* tab and *Font Files* tab are three buttons labeled *Scan Up*, *Scan Down*, and *Stop*. If you click on *Scan Up* or *Scan Down* MyFonts will display each font in the list for a certain amount of time (from 1/10th second up to 2 seconds each). During this Auto-view process, a speed control is displayed which allows you to adjust the amount of delay between each font displayed. Click the *Stop* button to stop the scanning process (or it will stop by itself when the end of the font list is reached).

Useful Tip: When you get new fonts, use the Auto-view feature to scan all of them. If any of them are flaky, MyFonts will spot them for you automatically.

Viewer Screen (Layout)

Working from the top left part of the Viewer Screen, here's an overview of what each component does or is used for:

Tabbed Index Component: Used to select fonts to view. The *Installed Fonts* tab lists all the fonts installed in Windows. The *Font Files* tab lists font file names which you can use to display fonts whether installed or not. The *Options* tab contains options which modify how fonts are to be viewed.

Viewport Panel: This is where your font sample is actually displayed. It's easy to identify so not much more can be said about it.

Information Panel: Just below the Viewport is the Information Panel. It shows you the font name being displayed, if it is proportional or fixed space, if it is TrueType or Postscript, and the full pathname (location) of the font file being used.

Send To Printer Button: This is a dual-function button which can be used to send a sample of the font being displayed to the printer. You can set this to print the font sample immediately or defer printing for a later time through the *Options* tab.

Specimen Selector: To the right of the printer button is a drop-down listbox which lets you select a specimen to display in the Viewport. Several specimens are already supplied. You can add your own to this list as well through the *Options* tab.

Font Size Panel: Below the printer button is a panel which contains controls to set the point size of the font being displayed in the Viewport. Take a look at the neat size adjustment knob, along with the point size LED display (kind of like what you'd see on a stereo system). To "turn the knob" you click on it and hold down the mouse button as you move your hand in a circle. While holding down the mouse button, you can get finer control by moving your hand in larger circles. The larger the imaginary circle is, the finer the point size adjustment. That's one way to adjust the point size. Another is to just click on a point on the knob which will then jump to a point size. You can get "close enough" to the size you want this way, then use the fine adjustment control (up-down arrows) to make adjustments in one-point increments. Either way, the idea is to select a point size you are interested in viewing.

Status Panel: Located to the right of the Font Size Panel. A bank of six LED's provide visual feedback for the type of font being displayed in the Viewport. Below this are three Text Justification buttons which let you view the displayed text in the Viewport Flush Left, Centered, or Flush Right by clicking on the appropriate button. The six LED's above these buttons are indicators only (they do nothing if you click on them). Throughout the program, *indicators* are round and *option buttons* are square.

Grid Switch: In the up position it lets you see your selected specimen. In the down position it displays every character of the selected font. Plus, displays the [ASCII value](#) for any character simply by clicking on that character.

Using MyFonts (Printing Fonts)

[Click here](#) to see an explanation of each component on the Printer screen.

Options Tab

Before using the Printer let's take a quick look at the Printer Options tab. Click on the *Options* tab (accessed from the Printer screen). These are the options available to you:

Add/Remove Text Sample: This works exactly the same as in the Viewer. [Click here](#) if you want to review this option.

Special Codes: When entering your specimens, there are three special codes you can use to help get just the effect you want:

- If you enter the 3 characters "<F>" (no quotations) anywhere in your text then this code will be replaced with the font's full name when you print your specimen.
- If you enter the 3 characters "<->" (no quotations) at the very beginning of your text then this code will center your text within the column width. This is a line-oriented code (it does not work with paragraph text -- since that wouldn't make sense anyway).
- If you enter the 3 characters "<+>" (no quotations) anywhere in your text then this code will be replaced with a new line (like pressing the enter key). When using this code, lines longer than the column width will be clipped at the margin (even if you have selected *word wrapping* from the *Show (or change) All Printer Options* button -- it will be ignored). You cannot print paragraphs *and* use this code at the same time. You *can* combine this code with the "<->" (center) code above to print centered, multi-line specimens.

Note: Multi-line (paragraph) printing is controlled by settings in the [Options Tab](#) (accessible by clicking on the *Show (or change) All Printer Options* button).

Print Fonts Filter: Depending on how you set this option, fonts will either be included or excluded from being added to the [Print List](#). You can elect to include just the installed fonts, just uninstalled fonts, or all of the fonts.

Show Advisories: When a font cannot be included in the Print List an [Advisory Dialog](#) pops up to let you know about it. If you want to skip the advisories then select that option [here](#). The fonts will still be excluded if any error is encountered.

Reset All Printer Options: Clicking this button will restore all options to the factory (initial) settings.

Printing Fonts

After you have made changes to the *Options* tab to suit your tastes, all you have to do is select the fonts you want to print. This can be *any combination* of installed or uninstalled fonts... from *any combination* of folders... it doesn't matter. You can select individual fonts or you can [multi-select](#) groups of fonts all at one time. Your selections are all added to the [Print List](#).

The Print List can be [sorted](#) and you can remove fonts already added to the list by either right-clicking on the font(s) you want to remove from the list, or by clicking on the *Clear Print List* button to remove all the font entries.

Once you have selected your [printer options](#), all you have to do is click on the **Print NOW** button to begin printing. If you haven't looked at the [Printer Tips](#) yet then you might want to do so now.

That's all there is to it... easy!

Printer Screen (Layout)

Working from the top left part of the Printer Screen, here's an overview of what each component does or is used for:

Tabbed Index Component: Used to select fonts to print. The *Installed Fonts* tab lists all the fonts installed in Windows. The *Font Files* tab lists font file names which you can use to print fonts whether installed or not. The *Options* tab contains options which modify how fonts are to be printed.

All Characters Viewport: Shows all the characters in the selected font. The number to the left of the scroll bar is the [ASCII value](#) for the first character in the Viewport.

Specimen Viewport: Shows a sample of the font as selected from the available specimens. The number to the left of the scroll bar is the [ASCII value](#) for the first character in the Viewport.

Add This Font to Print List Button: The button name is very descriptive of the function. The font which is being displayed is added to the [Print List](#) when clicked.

Add All Fonts to Print List Button: Click to add all selected fonts to the [Print List](#).

The Print List: All fonts to be printed are listed here. The list shows the font name as well as the font's file location. Both the *Font Name* column and the *File Pathname* column can be sorted by clicking on the column heading. Click once to sort alphabetically in ascending order. Click again to sort in descending order.

Advisory Dialogs: When adding fonts to the Print List, an Advisory dialog will popup when a font can not be added to the Print List along with a brief explanation.

Selection of more than one font at a time: Using standard Windows procedure, you can select more than one font at a time to add to the Print List. Simply click on the first font then, while holding down the *Shift-key*, click on the last font in a consecutive list. All fonts will be highlighted. Now click the *Add All Fonts to Print List* button to copy all the highlighted fonts to the Print List.

Express Add to Print List (shortcut): Instead of clicking the "Add To" buttons you can use this shortcut -- position the mouse over a selected (highlighted) font name and click the right mouse button. This works for selections of more than one font as well. So, *select (highlight)* using *Left-click* and *copy* using *Right-click*.

The Print NOW Button: Click this when you are satisfied with the composition of your Print List. A Print Dialog will popup so you can select the correct printer and other options. If you haven't looked at the [Printer Tips](#) yet then you might want to do so now.

Specimen Selector: To the right of the printer button is a drop-down listbox which lets you select a specimen to display in the Viewports. Depending on the template you select (see below), this is also the text sample that prints. Several specimens are already supplied. You can add your own to this list as well through the *Options* tab.

Printer Options button: Click to pop-open this multi-options tabbed control. Here's an explanation of each tab:

Templates Tab: This is what your printed sample sheets will look like. A small picture of each template is displayed as you cycle through the list. This is also where you set the default template for the Viewer. When you see the template you want for the Viewer click on the button to "lock in" that template -- it will not change until you select another template for the Viewer.

Page Layout Tab: This is where you adjust paper margins, the size of the specimen to print, page headers and footers. All standard stuff.

Colors Tab: This is where you select the colors to use (if any) in your specimen sheets. You *do not* need a color printer to take advantage of this feature. For example, using a black & white printer you could select white text for the By-line and Black for the highlight color. This would yield reverse printing (white characters on a black background). But, if you have a color printer then you can really jazz up those specimen sheets. You can select colors for the Header, Footer, By-line, Highlight and, of course, the font sample itself. Experiment!

Options Tab: Stopping sample text at margins effectively prints one-line samples, otherwise the sample prints as a paragraph of up to 5 lines before being truncated. On the other hand, if your specimen is short (i.e. "Sample Type") but you want to fill the column with the text so it appears blocked then check the *Repeat Text* option. The rest of the stuff is self-explanatory.

Save Bitmap Tab: Why is this here? We have no idea... it seemed like a cool feature to add so we did. To save a font sample as a bitmap simply adjust to the size you want (the read-out tells you the current size), change the font color and/or background, enter a file name and save it. Actually, this could come in handy if you want to include a word or two in a drawing or word processor without installing the font, so it *really does* have some value.

Using MyFonts (Managing Fonts)

[Click here](#) to see an explanation of each component on the Manager screen.

Options Tab

Before using the Manager let's take a quick look at the *Options* tab. Click on the *Options* tab (accessed from the Manager screen). These are the options available to you:

FontPack Installation: When installing [FontPacks](#) you will want to decide how the fonts should be installed. There are two methods to consider:

Replace all existing installed fonts with the contents of the FontPacks you are installing. Frankly, we like this method best since it guarantees the only fonts left installed are the ones you have selected (everything else is removed).

Add-To the existing installed fonts. This method is much faster than the *Replace* method since nothing has to be uninstalled first.

Font Relocation: Also when installing fonts you have the option of first copying the font file to a selected font folder then installing the font from that folder. An example of using this method would be if you have a CD-ROM which contains fonts. If you want the font to be available all of the time then it needs to be copied first to a folder on your hard disk. On the other hand, you could also install the font directly from the CD-ROM. The advantage of this would be that it would take up zero hard disk space. The disadvantage would be that the font would only be available if the CD was in your drive.

Erasing Font Files: If this option is selected then the font file will be deleted (forever) whenever you uninstall a font. If you select this option you will also be asked if you want to be prompted before deleting a font file or if it should happen quietly in the background. Our recommendation is not to use this option unless you are *very* familiar with what you are doing.

If you delete a font file by mistake all is not lost. The file is moved into your Recycle Bin when it is deleted, so you can restore it up to and until you empty the Recycle Bin.

Reset All Manager Options: Clicking this button will restore all options to the factory (initial) settings.

{button Learn more about: [Font Location](#),JI('`hpad260');}

Installing Fonts

MyFonts makes it so easy to install a font that it hardly needs explanation. All you have to do is click on the *Font Files* tab, select the folder containing the font files you want to work with, click on the individual font files to see a sample of the font. If the font is not already installed then you can click the *Install Selected Font Now* button. If the font is already installed then this button will read *Un-install Selected Font Now* and clicking it will uninstall the font.

Un-installing Fonts

Believe it or not, it's even easier to uninstall a font than installing it. Click on the *Installed Fonts* tab and select the font to uninstall then simply click the *Un-install Selected Font Now* button.

Working with FontPacks

Making a FontPack

This is handled exactly the same way as adding fonts to the [Print List](#) when printing fonts. But, instead of printing, we will be saving the list as a FontPack for later use.

Simply click on the fonts to include in the FontPack List. This can be *any combination* of installed or uninstalled fonts... from *any combination* of folders... it doesn't matter. You can select individual fonts or

you can [multi-select](#) groups of fonts all at one time.

The FontPack List can be [sorted](#) and you can remove fonts already added to the list by either right-clicking on the font(s) you want to remove from the list, or by clicking on the *Clear Pack* button to remove all the font entries.

When the list is complete click on the *Save Pack* button, supply a name for your new FontPack and you're done! Your new FontPack will be listed in the lower right-hand corner of your screen.

Although FontPacks can be any size, Windows has limits on how many fonts can be installed at any one time. How many? Can't really give you a number. Windows allows a certain number of *characters* (not font files) to be used. The characters include the font's name, the path's name and the file's name. Combined, this equals one font entry. So, it's difficult to say how many fonts since the number of characters for each entry will vary. But, MyFonts will count the total number of characters in the FontPacks you make and, if they exceed Windows' limits, will alert you in advance and let you know what needs to be adjusted.

Editing a FontPack

Select a FontPack from the list in the lower right-hand corner and click on the *Edit Pack* button. The contents of the FontPack is copied to the FontPack List. You can now freely add-to or remove fonts from the list, then save the FontPack. To review how to add or remove fonts, [click here](#).

Removing a FontPack

Select the FontPack to remove then click on the *Delete* button.

Installing & Uninstalling FontPacks

Simply select the FontPack(s) to install or uninstall and then click either the *Install* or *Un-install* button. A FontPack is selected when a check mark is showing. You can check more than one FontPack at a time. Before you do this you might want to review the options in the *Options* tab to make sure you have them set as you expect them to be.

As a side note, the *Uninstall* button is really just a convenience item. You can actually achieve the same result using just the *Install* button instead. How? Well, instead of asking yourself what FontPacks you want to uninstall, ask yourself what FontPacks you want *installed*. Select the FontPacks you want installed then click on the *Install* button using the *Replace All Fonts* option in the *Options* tab. All other fonts will be uninstalled. The result is the same. But use whatever method you feel most comfortable with. Hope that didn't confuse anyone!

Printing a FontPack

Select the FontPack you would like to print specimen sheets of, then click on the *Edit Pack* button. The contents of the FontPack are copied to the FontPack List.

Navigate to the Printer screen. The FontPack List becomes your Print List. Follow the directions of [printing fonts](#) and you're done!

Manager Screen (Layout)

Working from the top left part of the Manager Screen, here's an overview of what each component does or is used for:

Tabbed Index Component: Used to install or uninstall fonts. The *Installed Fonts* tab lists all the fonts installed in Windows. You can *uninstall* fonts from this list. The *Font Files* tab lists font file names which you can use to *install* fonts. The *Options* tab contains options which modify how fonts are to be installed or uninstalled.

Un-install Selected Font Now Button: Used to uninstall the font displayed in the Viewport. This button only is available from the *Installed Fonts* tab.

Install Selected Font Now Button: Used to install the displayed font. This button is only available from the *Font Files* tab, and only when the displayed font is not installed.

All other controls: All the other controls on this screen are identical to those already described in the [Printer Screen](#).

FontPack Manager Controls

All of the controls on this screen have already been explained in the [Printer Screen](#), except for the following:

Available FontPacks: In the lower right-hand corner of the screen. These are the FontPacks available to you. You select FontPacks by checking the check box.

FontPack Contents: This is a list of fonts which make up the current FontPack. Maybe you are creating a new pack or editing an existing FontPack, or combining several FontPacks. Whatever you are doing, the fonts listed here represent the list of fonts you are working with. Both the *Font Name* column and the *File Pathname* column can be sorted by clicking on the column heading. Click once to sort alphabetically in ascending order. Click again to sort in descending order.

Selection of more than one font at a time: Using standard Windows procedure, you can select more than one font at a time to add to the FontPack List. Simply click on the first font then, while holding down the *Shift-key*, click on the last font in a consecutive list. All fonts will be highlighted. Now click the *All Fonts to FontPack* button to copy all the highlighted fonts to the FontPack.

Express Add to FontPack List (shortcut): Instead of clicking the "Add To" buttons you can use this shortcut -- position the mouse over a selected (highlighted) font name and click the right mouse button. This works for selections of more than one font as well. So, *select (highlight)* using *Left-click* and *copy* using *Right-click*.

Save Pack Button: Click this to create a new FontPack containing the fonts in the FontPack List. When creating FontPacks you might want to think about how you intend to use them later. For example, FontPacks based on usage such as a *NewsLetter* pack containing fonts for working with newsletters would be better than FontPacks containing all script fonts (unless, of course, you have use for such a pack).

Install Button: Used to install existing FontPacks. You can select as many FontPacks as you wish, you do not have to install FontPacks individually.

Un-Install Button: Used to uninstall existing FontPacks. You can select as many FontPacks as you wish, you do not have to uninstall FontPacks individually.

Edit Pack Button: Check an existing FontPack then click this button to open the FontPack and list its

contents in the FontPack List.

Delete Button: To remove (forever) a FontPack first select the FontPack then click on this button. Your font files are *not deleted*. Only the FontPack is deleted.

Using MyFonts (Comparing Fonts)

[Click here](#) to see an explanation of each component on the Font Compare screen.

Comparing Fonts

You will notice two font panels. Each panel will display all 256 characters in a font, plus the two panels are synchronized to scroll as one when you move the scroll bar back and forth.

A checkbox in the lower left-hand corner of each font panel indicates which of the two panels is *active*. The checked panel is the *active panel*. The *active panel* will accept and display any font you select from either the *Installed Fonts* list or the *Font Files* list. To make either the top or bottom panel the *active panel* all you need to do is click on the panel or the checkbox (either way will work).

The Panose Number: TrueType font files have a special code which can be incorporated into each font file called *Panose*. This code can categorize a font's attributes (describe the font) and would be a great method to use for making font comparisons. Unfortunately, the industry (and individuals who make their own fonts) hasn't taken this code to heart. So, many fonts either do not contain a complete Panose number or omit the code entirely. In addition, the code is for TrueType fonts only. Postscript fonts do not include a Panose number at all.

Although the Panose concept is very good, until *all fonts* include this number (or a similar concept) we have decided not to use it since it would, at best, just give a false sense of reliability. Programs that use this method will definitely produce unreliable results.

Options Tab

Comparison Methods Used: The most accurate method would be to compare fonts for an *exact match*. This is also the easiest to implement in software. But, many font makers use the same base font and change just a single character or other minor item (to get around copyright issues). Please be aware of this when making your selection.

Regardless of the method used, the font's full name and family name are ignored in the matching process so you do not need to concern yourself with this issue.

Exact Match: A comparison is made of all 256 characters in the font. This option will only match if two font files are *exactly* the same. Although this is the most reliable method of matching two fonts, please keep in mind that even the smallest difference in a font will result in a failed match.

Upper-Case Match: A comparison is made of just the capital letters in the font (A-Z). This method works very well and seems to catch most fonts which are similar but not exactly the same.

Lower-Case Match: A comparison is made of just the small letters in the font (a-z).

User-Defined Match: If you are interested in fonts which match certain characters then this is the option for you! Enter the characters you are interested in matching and MyFonts will do the rest. Try using a good mix of characters. For example, "ABCgyp123" would be more accurate than "ABC". Keep in mind if no characters are entered and this option is selected then *all fonts* will match.

Stop On Match: In addition to the above filters you can also choose to stop font comparisons automatically when a match is found (if you are using the Auto-scan feature). Auto-scanning is started by clicking on either the *Scan Down* or *Scan Up* buttons located under the *Installed Fonts* and *Font Files* list boxes.

Consider this: The best comparison method is using your own eyes. Obvious, yes, but it's easy to get so involved with the methods being used that many people actually forget to *look* at the fonts being

compared -- *you* are the best judge in determining if a font is close enough to be considered a duplicate or not.

Compare Screen (Layout)

Working from the top left part of the Font Compare Screen, here's an overview of what each component does or is used for:

Tabbed Index Component: Used to select fonts to compare. The *Installed Fonts* tab lists all the fonts installed in Windows. The *Font Files* tab lists font file names which you can use to compare fonts whether installed or not. The *Options* tab contains options to select which comparison method to use.

Font Display Panels: Shows what the two fonts being compared look like. To change the font being displayed in either of the two panels, simply click on the panel you want to change then click on the font you want displayed in this panel. The panel will remain *selected* until you click another panel. So, you only have to click the panel once then click as many fonts as you want -- each will be displayed in the same panel. The other panel (the one you didn't click on) will keep its current font until you decide to change it (by clicking on this panel).

Display Panel Checkbox: Clicking on either checkbox does exactly the same things just described above. The check boxes are included so the selected font panel is easier to identify (and understand).

Scroll Control: Moves the contents of both display panels together left or right. At the left-side of the Scroll Control is a number which indicates the [ASCII value](#) of the first character in the display panels.

Tiny F-Button and

Font Details Panel: You can see additional information about the font being displayed in the *selected panel* by clicking the (very) small "F"-button located at the bottom-right of the *selected panel*. The font's file name will be found here as well as Copyright, Trademark, and other miscellaneous information.

Note: When displaying certain Postscript fonts you may notice the Copyright information being displayed in the *Font Details* list is cut off. This is *not* a bug in our software. Many Postscript fonts have this problem because the Copyright information storage space within the font itself is not large enough to store the data. If you see information which is cut off, or something that looks like gibberish then this is exactly what is in the font file itself.

All other controls: All the other controls on this screen are identical to those already described in the [Printer Screen](#).

Font File Location

Font File Location

If you are new to font management (and that's okay) then you might want to defer reading this until a later time when you feel more comfortable with your system. Reading this information will advance your ability to take complete control over your system's fonts.

Before you can effectively manage your fonts you need to understand how fonts are handled in Windows.

By default, fonts are kept in your \Windows\Fonts folder. There are two problems with this. First, *every* software package dumps fonts into this folder (or so it seems), until it becomes sort of like a junk yard for files, making management almost impossible. Second, Windows tries to install *every* font file in your Fonts folder on start-up. So, if you have a thousand fonts in the folder then all of them get installed -- *what a waste of memory and resources!*

To take control you need to move your fonts to another folder. To a folder which *you create* and only you have control over. Leave only the original Windows fonts in the \Windows\Fonts folder (actually you can move them as well but since some software may not follow all the rules and take shortcuts -- not good -- then it's a safe bet to keep the original fonts alone).

Here's a list of the fonts we recommend you keep in your \Windows\Fonts folder:

Arial	Courier
Arial Italic	Courier Italic
Arial Bold	Courier Bold
Arial Bold Italic	Courier Bold Italic
Times New Roman	Symbol
Times New Roman Italic	Wingdings
Times New Roman Bold	
Times New Roman Bold Italic	

The advantage of doing this is only the fonts *you* want installed get installed and, if some software package dumps a load of fonts in your \Windows\Fonts folder they will be easy to identify and sort through. If you want to keep them just move them to *your* folder, otherwise you can get rid of them.

How To Do It

Here's step-by-step instructions (it's very easy):

1. Make a folder. Something like "c:\TTF" will work, for example.
2. Copy (don't move) all *TrueType* font files from your \Windows\Fonts folder to your new folder. TrueType font files have a file extension of ".TTF". Only copy this type of file. *Do not copy* files that end in any other extension. For example, files that end in ".FON" are your Windows screen fonts and should never be moved, so don't copy them.
3. Make a [FontPack](#) (explained in the [Manager section](#)) of some basic fonts from their new location. Maybe give the FontPack a name like *Basic Fonts*.
4. Install the FontPack you just made *replacing all other installed fonts*.
5. Restart Windows. Then before using any other software, go ahead and delete the *TrueType* font files from your \Windows\Fonts folder. You want to do this right after starting Windows because once a font is used by another software package then that font will not be able to be erased from your system for the rest of that Windows session.

CONGRATULATIONS! You are now in total control over your fonts. You are the only one who decides which fonts get installed or uninstalled. *You are the master.*

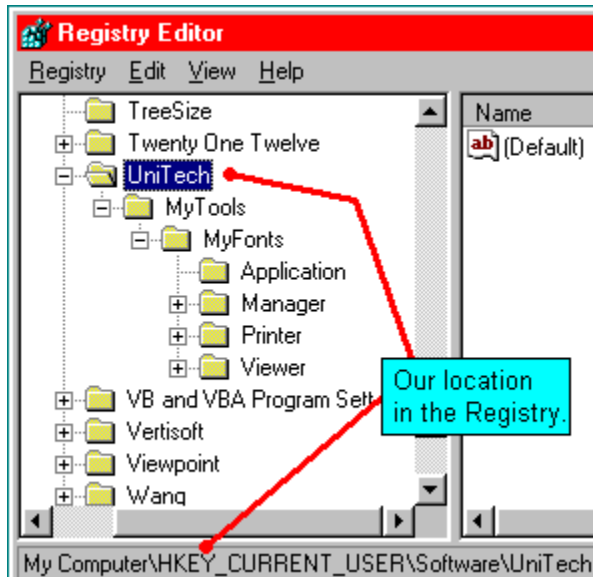
Windows Registry

What MyFonts Does to the Registry

Nothing in this section is necessary to run MyFonts. But, if you are interested in the entries MyFonts makes to the Windows Registry then you will appreciate the information presented here. Frankly, we hate using software that modifies the Registry without documenting what was done.

For those of you who don't know, the Registry is a central database which Windows maintains that holds all kinds of information about your system. Software developers usually store information about their products in this database (like the options you set when you run MyFonts).

Here's a picture of the folders (entries we make) as seen in RegEdit (the Registry Editor which is supplied with Windows):



Registry Path:

MyComputer\HKEY_CURRENT_USERS\Software\UniTech.

UniTech Folder: We use the name of our parent company as the anchor for the entries we make to the Registry because we make other products besides MyFonts. Entries for all of our products are kept in this folder.

MyTools Folder: All of the shareware we make is under the name *MyTools.com* which is also our URL on the Internet. This folder contains our name and address, phone number, e-mail address and other company-related information.

MyFonts Folder: All the settings related to this program are kept here. This folder contains other folders which hold information related to the program's functions:

Application Folder: Holds data related to the entire program such as the sample text you use in MyFonts and the different sounds in the program. If you are comfortable with modifying the Registry then you can change the sounds we use for some other sounds you like better by modifying this portion of the Registry.

Manager Folder: Holds data about font management which includes the FontPacks you make.

Printer Folder: Holds data related to the Printer section of the program.

Viewer Folder: Holds data related to the Viewer section of the program.

Removing Registry Entries

Nothing we have added to the Registry is critical to the operation of Windows. You can totally remove all of our entries from the Registry without any side-effects. Of course, if you do remove the entries and then run MyFonts again it will be as if you were running MyFonts for the very first time (that could be a good thing depending on what you are trying to do).

Anyway, we wanted you to know what we did to your Registry if, for nothing else, just so you have the information. We hope you can appreciate our thoughts about this.

How-to: Fix Your Fonts Folder

What's All This About?

One thing that MyFonts does for you (which other software does not) is analyze your font system each time the program starts. If MyFonts detects any problems with your font system you are shown an *Advisory Alert Message* (which tells you to read this topic).

Since MyFonts' main purpose is to work with fonts, it doesn't make sense for the program to operate when your *Windows* font system is not operating properly. And, because of the many *human* decisions required to fix this problem, it doesn't make sense for MyFonts to automatically fix the problem either. Read on, you will see what I mean.

What Caused My Font System to Fail?

The most common cause for this condition is over-loading your system with fonts. Windows cannot maintain an infinite number of fonts. The characters which make up the font name, plus the characters which make up the complete path name (including the file name) for all fonts cannot exceed 64K. This translates to *approximately* 800 font files. Either you, or some software which you installed, have exceeded this limit which caused the problem with your system. Currently, your Windows system cannot add any more fonts.

Here's How to Fix Your Font System:

Below are *two different methods* to fix your system (choose one), presented in the order of preference:

- 1. Create a folder off your root directory and give it a name (for example, "C:\TTF").
- 2. Reduce the number of TrueType font files (file names which have the extension "TTF") in your Fonts Folder by moving font files to this new folder until your Fonts Folder contains 800 or fewer font files. You might want to take a look at the [Font File Location](#) topic in this Help file for a discussion of font management and why it might be better to move ALL of your TrueType font files to this new folder (but that's up to you -- it's not necessary, just recommended).
- 3. Exit Windows, then restart Windows again in SAFE mode. Make sure you are in SAFE mode. Do not run any software. The reason you are doing this is to force Windows to rebuild its font information and Registry information.
- 4. Exit Windows again, then restart in NORMAL mode. Try MyFonts. If you still get an error message indicating your Fonts folder is corrupt continue with step 5. ***If MyFonts starts without error then your Fonts folder has been fixed.***
- 5. If you are still reading then I have one more trick you can try:

WIN95 USERS: If you do not already have Microsoft's free utility called *TWEAKUI* then you can download it from our web site (on our Links page) or you can get it directly from Microsoft. Click this link to go to our web site right now: www.MyTools.com . After installing this utility, it will be located in your Control Panel.

WIN98 USERS: Check your Control Panel for *TWEAKUI*. If it is not there, load your Win98 CD and right-click on this file from your CD drive:

\Tools\Reskit\Powertoy\Tweakui.inf

Now select the install option which will place *TWEAKUI* in your Control Panel.

- 6. Run *TWEAKUI*. Click on the *Repair* tab, then click on "*Repair Fonts Folder*". Windows will inform you that it will re-start. After re-starting, your Fonts Folder will be repaired and you will be able to run MyFonts.

What if this Doesn't Work?

Please note that at least one of the two methods above works for 99% of the cases. You should know that, in some situations Microsoft's *TWEAKUI* will not fix the Fonts Folder. If you have followed all of the above steps (maybe even twice) but your Fonts Folder still is not fixed then all I can suggest is to contact Microsoft and ask them for an alternate solution.

If *YOU* come up with an alternate solution or get one from Microsoft which is better than mine, please consider sharing it with others by letting me know what it is (in detail, please). I'll make sure it is distributed for free to anyone who asks. You can reach me via e-mail at MyFonts@MyTools.com or call me by phone at 314-770-2770 (hours are 8am - 6pm Central time, Monday through Friday, and 8am - Noon on Saturday).

Documentation for

MyFonts

Version 4.1

Copyright 1999, MyTools.com
2697 McKelvey Road
Maryland Heights, MO 63043 USA
314-770-2770
E-mail: Support@MyTools.com

ALL RIGHTS RESERVED

-- END OF DOCUMENT --

If you have any questions about our products please feel free to contact us:

MyTools.com
2697 McKelvey Road
Maryland Heights, MO 63043 USA

314-770-2770

E-mail: Support@MyTools.com

Register Today... It will make you feel really good!

