

Options for Cyber-Info E-Mail Notify

POP3 Server

Other Settings

Dial-Up / E-Mail Filter

Notification Methods

Windows Utilities

System Information

It will display your Windows information, System Information and Drives Information.

Disable System Keys

It will disable system keys such as <Ctrl><Alt>, <Ctrl><Esc> and <Alt><Tab>

Remark : Only work in Win95

Restart Windows

Logoff Windows
Restart Windows
ShutDown Windows
DOS Prompt

Hide Desktop

It will hide all desktop icons.

Hide Taskbar

It will hide taskbar. Click Show taskbar button to show it again.

Start ScreenSaver

It will start the default screen saver.

Screen Resolution

You can select to change the screen resolution.

Remark : the resolution depends on your video card and color mode.

Internet Utilities

Microsoft DUN

You can select the profile that defined in Microsoft dial-up networking.

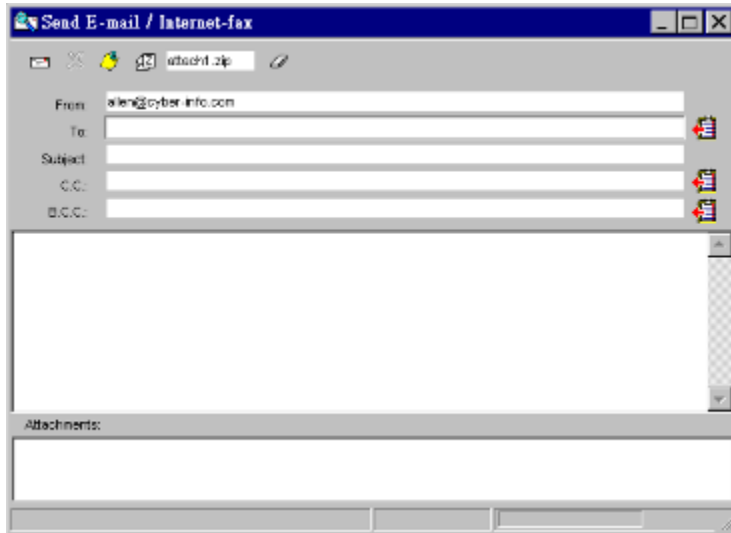
Get IP address(es)

You can select the IP address(es), both dynamic and static, and copy it to clipboard.

Registration

After registration, we will send you a password.
Thank you.

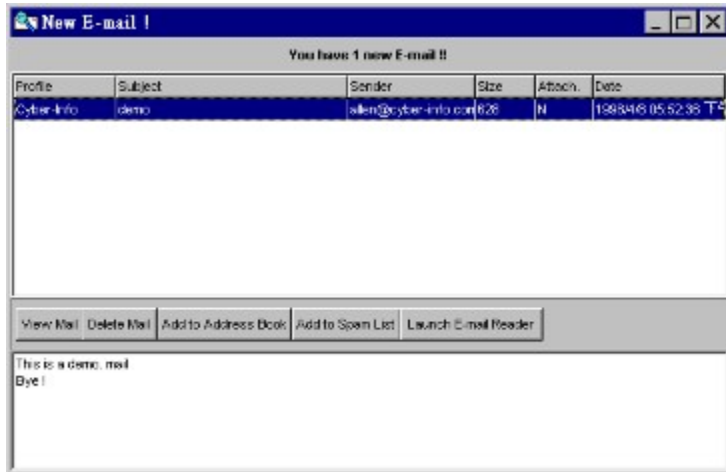
Send E-mail / Internet-fax



You can send Email or internet fax through this program. In addition, you can add any attachment to your E-mail. In this version, you can even zip and attach files into the Email which means that, you can select any files and the program will compress them into a Zip file with the name you provided.

If you want to send internet fax, you can select the fax no. by clicking the address-book icon. Moreover, you can attach any TIF file to the 'fax' !

View Message Viewer



New Email message headers will be displayed inside the message box. The information include Profile (which Email account), subject, sender, the mail size, indication of attachments and date. You can sort those headers by clicking each of the headers on the top row.

Instead of clicking the buttons below, you can also right click the mouse on the message box to activate the menu. The options are :

View Mail

Delete Mail - you can multi-select the messages.

Add to Address Book

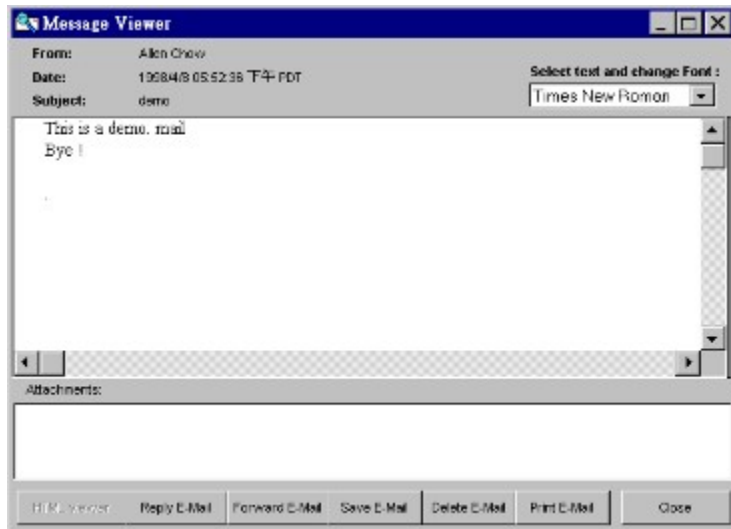
Add to Spam List

Launch E-mail Reader

Set confirm to delete

In the bottom of the message box, you can view first 5 lines of each messages by selecting the messages.

View Mail



In this message viewer, you can change the fonts of the message, save or execute the attachment by right click the attachment icon.

In addition, you can also reply, forward, save, delete and print this message.

HTML viewer

If the message is HTML-based, the message viewer will automatically change to HTML mode.



Cyber-Info E-Mail Notify 3.7

Cyber-Info E-Mail Notify is an e-mail notification utility that can check multiple accounts for new mail and optionally delete spam. A pop up message with sound lets you know that mail has arrived, or you can use various visual effects. You can launch an external mail reader or quickly view, delete and send e-mail without having to load your full e-mail package. HTML-formatted mail can be viewed and there are a variety of spam filtering options available. You can also send Internet faxes. Quick launch of external e-mail client by pressing <F11> and quick check by pressing <F12> or double click tray-icon are added ! Some utilities are added including restart or shutdown windows, hide desktop or taskbar and display system information etc. Internet utilities including get IP address(es) and launch microsoft dial-up networking.

New notification methods : Blinking light of Num-, Caps- and Scroll-Locks and Notification wallpaper. Specified Time Mail Checking and start screensaver utility are added. Change screen resolution utility is added Mailbox Color is added. You can now know the presence of attachment of each mail and also you can preview the first 5 lines of message body without download the whole message.

HotMail Account with proxy server supported !!!!

You can now redirect your email from one email account to another email account automatically!

Also password protection is added !

[Options for Cyber-Info E-Mail Notify](#)

[HotMail Settings](#)

[Send E-mail / Internet-Fax](#)

[View Message Header](#)

[Registration](#)

[Password Protection](#)

[Windows Utilities](#)

[Internet Utilities](#)

AUTHOR:

(C) Cyber-Info Ltd. (Allen Chow), 1997

URL:

WebSite : <http://www.cyber-info.com>

Email: support@cyber-info.com

O.S.:

Win95, Win98 and NT4.0

STATUS:

Price: US\$20

On-Line Ordering : <https://www.regnow.com/softsell/nph-softsell.cgi?item=1356-1>

If you have any comment or suggestion, please send mail to us :
support@cyber-info.com

INSTALLATION:

Unzip the archive into a new directory and run SETUP.EXE

LIMITATIONS:

Check only POP3 servers and Hotmail. Other HTML-based E-mail Server such as Yahoo, mailExcite etc. are not supported yet.

FAQ:

See the Forum inside our web-site. <http://www.cyber-info.com>

REGISTRATION:

After registration, we will send you a password.
Thank you.

POP3 Server



POP3 Server Profile

Before you can check mail, you should at least set one profile (email account) in this option. Just press New button to add a new profile. After setting it, press Save button to store it. If you make any mistake, you can press Delete button to delete it or press Cancel button to cancel it.

Description

You can type anything here to describe this E-mail account. Don't leave it blank !
E.g. My 1st E-mail Account

POP3 mail server

This is your Incoming (POP3) E-mail server provided by your ISP. For example, if your email address is peter@isp.com, you POP3 server is possibly be mail.isp.com or pop.isp.com or something like that. If you are not sure, ask your ISP. It is important that the POP3 server here should be correct, otherwise you can't get your email.

POP3 username

It's exactly the name before the @ sign of your email address. If your email address is peter@isp.com, your username here should be peter.

Password

It's the password of your email account.

Mailbox Color

It's color that you want to indicate the email account.

Check E-Mail checkbox

Click this checkbox if you want to check this email account. Unclick it if you don't want to check this account.

Server Time-out

If your mail server is not easy to connect, set this value larger. Usually, 60 secs or less is enough for most of the cases.

Automatic Checking

There are a lot of options here to help you setting how and when you want to check mail.

Automatic Check

Click this option if you want the program to check mail for you in every certain minutes. You can set the period by yourself.

Check on Startup

Click this option if you want the program to check mail whenever the program starts running.

Don't check mail being read

Click this option if you don't want the program to check mail that being read before. In most of the cases, especially for those who leave their mail on server, this option is helpful.

Remark : For most of POP3 server, the Status header should change to "R" or "O" if the mail was being read. If the POP3 server doesn't do that, this option may not be function.

Don't check mail being checked

Click this option if you don't want the program to check mail that being checked before even you have read that mail.

Remark : This option will remain valid only when the program have not been terminated.

Check mail at specified time

Instead of checking mail in certain period, you can also set the program to check mail for you at specified time. The NOW button can reset the time to now.

Press <F12> to check mail

For those who don't like using mouse, they can press <F12> to check mail if they click this option. This function key may work for any instance, even when you are using a word processor.

Double-click tray-icon to check mail

Click this option can let you to check mail by double-clicking the tray-icon.

No error pop-up messages

For those who don't want any error message to come out after the program has checked email, click this option.

Other Settings



Launch CIECHECK on Windows Startup

Click to enable and unclick to disable it. If you use this option, make sure you have not added a shortcut of CIECHECK in Windows Startup folder. In fact, this option will add an item in registry such that whenever you start Windows, it will automatically be launched.

External E-mail Reader

Fill in the text-box or use Browse button to locate your external email client.
E.g. C:\EUDORA\EUDORA.EXE

Launch Reader on new mail

Click this option if you want to launch the external email reader whenever new mail found. In this case, any other notification will be terminated.

Press <F11> to launch Reader

For those who don't like using mouse, they can press <F11> to launch external email reader if they click this option. This function key may work for any instance, even when you are using a word processor.

Quick Mail Settings

If you want to use the quick mail option, you should provide information here before using that.

SMTP Server

This is the Outgoing (SMTP) mail server that provided by your ISP. The server name is usually something like mail.xxxx.com

Your return address

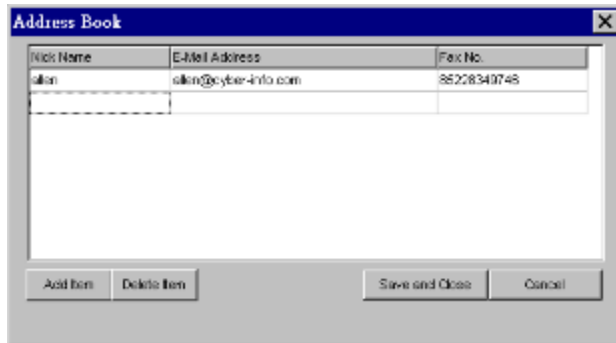
This is the Email address you give to other person. E.g. peter@isp.com

Save messages automatically after send

Click this option if you want to save all email that being sent by quick email option.

Address Book

Edit Address Book



Nick Name	E-Mail Address	Fax No.
allen	allen@cyber-info.com	86228349748

Buttons: Add item, Delete item, Save and Close, Cancel

Press Add item to add new address.

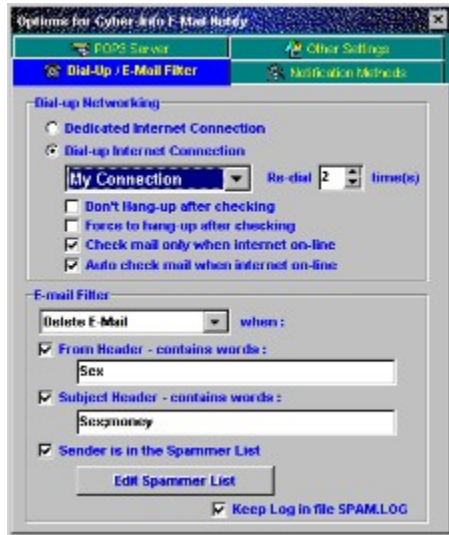
Press Delete item to delete selected address.

Press Save and Close after you have finished editing.

Press Cancel if you don't want to save.

Remarks : The address book is stored in a text file ADDRESS.TXT

Dial-up/E-Mail Filter



Dial-up Networking

Choose between dedicated Internet connection (if you have a leased line to internet) and dial-up internet connection (connected to your ISP).

Dedicated Internet Connection

Click this if you have a leased line to internet.

Dial-up Internet Connection

Click this if you want to connect to your ISP.

Connection

Select a connection which you have defined in Microsoft dial-up networking.

Don't Hang-up after checking

If you want the program dial to your ISP, check your email and remain online after checking no matter you have mail or not, click this option.

Force to hang-up after checking

If you want the program dial to your ISP, check your email and disconnect it no matter you have mail or not, click this option.

Check mail only when internet on-line

If you dial to your ISP by other program and want to check your mail only when internet online, click this option.

Remark : If you click this option , the program will not check mail for you unless you are online by other dial-up program.

Auto check mail when internet on-line

The program will check mail once you are internet online by dial-up.

E-mail Filter

This section helps you to remove emails that you don't need or what we say Spam E-mail. You can select whether you need to delete those mail by certain requirement or delete and reply the sender don;t send those mail to you again.

From Header - contains words :

If you click this option, those mails with sender contains words that you have specified will be deleted. For example : sex;money;advertisement

Remarks : Separate different words with semi-colon. Also, those words are case-insensitive.

Subject Header - contains words :

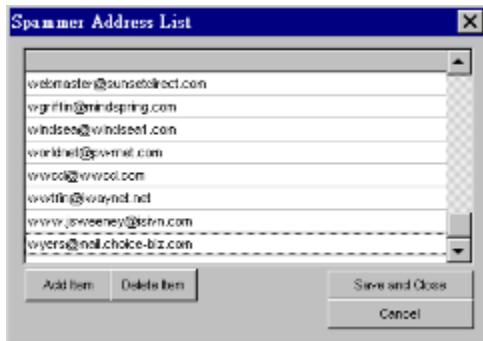
If you click this option, those mails with subject header contains words that you have specified will be deleted. For example : sex;money;advertisement

Remarks : Separate different words with semi-colon. Also, those words are case-insensitive.

Sender is in the Spammer List

If you click this option, those mails with sender in the spammer list will be deleted.

Edit Spammer List



Press Add item to add new address.
Press Delete item to delete selected address.
Press Save and Close after you have finished editing.
Press Cancel if you don't want to save.

Remarks : The spammer list is stored in a text file SPAMLIST.TXT

Keep Log in file SPAM.LOG

Click this option will keep log file to SPAM.LOG

Notification Methods



Sound Card Options

Play wave file on new mail

Click this option if you want to play a sound file on new mail. Use Browse button to select a sound file and use Play button to test it.

Play looping sound

Click this option if you want to play a sound file on new mail continuously.

Notification Methods when new mail comes

Pop-up Messages box with message headers

Click this option if you want to show the message header box on new mail.

Hide taskbar and show message

Click this option if you want to show a notification message on the taskbar position on new mail.

Remark : Click the taskbar to disable the notification.

Start ScreenSaver

Click this option if you want to start the default screensaver on new mail.

Blinking lights of Num-, Caps- and Scroll- Lock

Click this option if you want to blink the lights of Num-Lock, CapsLock and Scroll-Lock on new mail.

Remark : move mouse cursor to the tray-icon to disable the notification.

Notification wallpaper

Click this option if you want to change the wallpaper to notification wallpaper (you can tile the wallpaper in option) on new mail.

Remark : move mouse cursor to the tray-icon to disable the notification.

Special Notification for Special Account

You can select special notification to occur if specified account has mail or sender contains certain words.

Special Effect on new mail

Blinking Light bulbs around the desktop.

Remark : move mouse cursor to the tray-icon to disable the notification.

Play sound on new mail

Click this option if you want to play a sound file on new mail. Use Browse button to select a sound file and use Play button to test it.

Play looping sound

Click this option if you want to play a sound file on new mail continuously.

for the following account

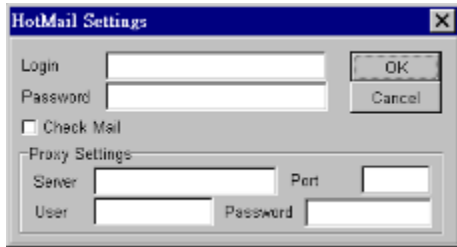
If you click this option, you can select special account that defined in POP3 profile settings.

for Sender contains words :

If you click this option, those mails with subject header contains words that you have specified will be treated as special notification account.

Remarks : Separate different words with semi-colon. Also, those words are case-insensitive.

Hotmail Settings



The image shows a 'HotMail Settings' dialog box with a blue title bar and a close button (X) in the top right corner. The dialog contains the following fields and controls:

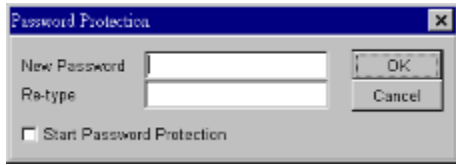
- Login:** A text input field.
- Password:** A text input field.
- Check Mail:** A checkbox.
- Proxy Settings:** A section containing four input fields:
 - Server:** A text input field.
 - Port:** A text input field.
 - User:** A text input field.
 - Password:** A text input field.

At the bottom right of the dialog, there are two buttons: 'OK' and 'Cancel'.

This option let you to set accounts for Hotmail. Just input your login name and password and click the check mail box, the program will check mail for you.

If you are using HTTP proxy, just input the information in proxy settings.

Password Protection



Password protection works on the following cases:

1. View Message headers
2. Save or delete Profile

