



# Contents

## 1. Media Center :

Overview

CD Player

Wave files Player

MIDI files Player

AVI files Player

MPEG files Player

MPEG CD-I Movie Player

Phone Dialer

TV/Camera

Menu Items

Buttons

File List Window

## Overview of Media Center

The Media Center controls all the multimedia resources in your computer and provides a friendly interface to access the Wave, MIDI, AVI and MPEG players to play music, sound or movies. It also provides full control when viewing the TV on your computer, if a TV card is equipped. With an additional Remote Input Module installed, you can use an infrared remote controller to control all the multimedia functions.

The Media Center integrates the following multimedia functions:

1. Play music CD, MIDI files, Wave files, AVI files, MPEG files and MPEG CD-I movies
2. Phone dialer
3. TV/Camera
4. Remote control

**Main Window:**



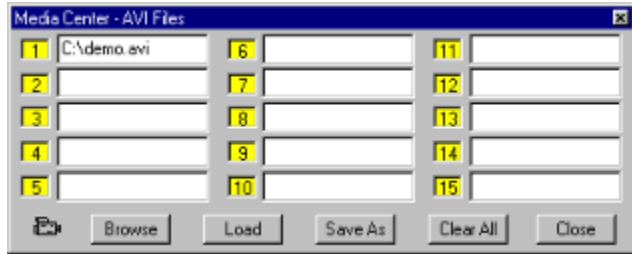
## Buttons

-  Button 0
-  Button 1
-  Button 2
-  Button 3
-  Button 4
-  Button 5
-  Button 6
-  Button 7
-  Button 8
-  Button 9
-  Button \*
-  Button #
-  Button MUTE
-  Button VOLDOWN
-  Button VOLUP
-  Button SRS
-  Button SRS
-  Button HOME
-  Button END
-  Button PREV
-  Button PLAY
-  Button NEXT
-  Button REPEAT
-  Button PAUSE
-  Button STOP
-  Button EJECT
-  Button ERASE
-  Button DIAL
-  Button BROWSE
-  Button CLEAR
-  Button CD
-  Button MIDI
-  Button WAVE
-  Button AVI
-  Button MPEG
-  Button CD
-  Button PHONE
-  Button TV

## File List Window

This file list allows you to enter 15 files for each media type (MIDI, WAVE, AVI, and MPEG). You can either type in the full path to the files or use browse window to select them into the file list. Drag-and-drop from Explorer is also supported. When you place the cursor on an entry of the list, media center will try to open this multimedia file and be prepared for play. "Clear All" button will clear the content of all entries of the list (for current media type). "Save As" button allows you to save current selections (for all media types) into a disk file. And you can use "Load" button to load it back. When in phone mode, the list is used to store phone numbers. You can use number buttons for speed dial.

### File List Window:



## Menu Items

**Always On Top**

-The main window will stay on top when enabled

**Show List**

-Show a list of chosen works

**Fixed Screen**

-Fix the movie window in the central area of media center

**TV**

-Enter TV menu

**Help**

-Bring up this help file

**What is**

-For context help

**About**

-Bring up the About dialogbox

**Minimize**

-Minimize media center window

**Microft Volume Control**

-Bring up Microsoft Volume Control program

**Exit**

-Quit the program

## **TV Menu**

<b>Video Format</b>	-Alter image dimensions/format
<b>Video Source</b>	-Control video source
<b>Video Display</b>	-Alter image display pattern
<b>Overlay</b>	-Overlay image
<b>Preview</b>	-Digitized image
<b>Capture Setup</b>	-Image capture options
<b>Start Capture</b>	-Begin capturing image (Stopped by clicking mouse button in any time)
<b>Set Capture File</b>	-Alter default capture file name
<b>Save Capture Video As</b>	-Save captured image to a new file

## **Remote Control**

This program supports BCM Remote Control. Please refer to the help file for BCM Remote Control for detail.

## **CD Player**

### **Play music CD:**

Click on the “Play” button to play from the beginning; or click on number button(s) to specify the starting track number. When switching to other mode, music will not stop automatically. If necessary, use “Stop” button to stop music before leaving this mode.



## **Wave files Player**

### **Play Wave files:**

The file list allows you to enter fifteen files. To play, click on the file name and click on the “Play” button; or click on number button(s) to enter a number from 1 to 15.

## MIDI files Player

### **Play MIDI files:**

The file list allows you to enter fifteen files. To play, click on the file name and click on the “Play” button; or click on number button(s) to enter a number from 1 to 15.

## AVI files Player

### **Play AVI files (Video for Windows):**

The file list allows you to enter fifteen files. To play, click on the file name and click on the “Play” button; or click on number button(s) to enter a number from 1 to 15.

## MPEG files Player

### **Play MPEG movies stored in files:**

The file list allows you to enter fifteen files. To play, click on the file name and click on the “Play” button; or click on number button(s) to enter a number from 1 to 15.

## MPEG CD-I Movie Player

### **Play MPEG movies on CD:**

When switching to this mode, there will be about two seconds delay before the movie window comes up. “Next” button is used to maximize the movie window and “Prev” button is used to restore the size of movie window.

## Phone Dialer

### **Use Phone Dialer:**

Use number buttons to enter a phone number or to specify an entry in the phone list (from 1 to 15). Click on “Dial” button to dial the number entered. Once the “Dial” button is clicked, the button will change to “Hang-up” button. You need to click on the “Hang-up” button first before re-dial. “Erase” button is used to delete the phone number entered last time.

## **TV/Camera**

### **Play TV program or capture images through the camera:**

Set video source to TV tuner to see TV program or external video to use camera to shoot a period of movie. After shooting a movie, save the captured images to a new file and use [AVI files player](#) to show the movie you just shot. Use draw-down menu under [TV menu](#) item to set options.

## **BUTTON\_1**

Enter number 1 for track number, list number, or phone number.



## **BUTTON\_2**

Enter number 2 for track number, list number, or phone number

## **BUTTON\_3**

Enter number 3 for track number, list number, or phone number.

## **BUTTON\_4**

Enter number 4 for track number, list number, or phone number.

## **BUTTON\_5**

Enter number 5 for track number, list number, or phone number.

**BUTTON\_6**

Enter number 6 for track number, list number, or phone number.

## **BUTTON\_7**

Enter number 7 for track number, list number, or phone number.

**BUTTON\_8**

Enter number 8 for track number, list number, or phone number.

## **BUTTON\_9**

Enter number 9 for track number, list number, or phone number.





## **BUTTON\_0**

Enter number 0 for track number, list number, or phone number.

## **BUTTON\_0R**

In phone mode, enter '#'.

## **BUTTON\_MUTE**

Green color shows MUTE is on; Otherwise, MUTE is off.

## **BUTTON\_VOLDOWN**

Turn volume down.

## **BUTTON\_VOLUP**

Turn volume up.

## **BUTTON\_SRS**

Green color shows SRS (surrounding sound) is on; Otherwise, SRS is off.

## **BUTTON\_HOME**

In Music CD mode, play the previous track. In MPEG CD-I mode, restore the size of movie window. In other modes, play the previous file in the file list.



## **BUTTON\_END**

In Music CD mode, play the next track. In MPEG CD-I mode, maximize the size of movie window. In other modes, play the next file in the file list.

## **BUTTON\_PREV**

Seek backward and play.

**BUTTON\_NEXT**  
Seek forward and play.

## **BUTTON\_REC**

Green color shows Repeat-Play is on; Otherwise, Repeat-Play is off.

## **BUTTON\_PAUSE**

Pause/Restart playing.

## **BUTTON\_STOP**

Stop playing.

## **BUTTON\_EJECT**

Eject CD.

## **BUTTON\_X**

Erase the phone number entered.



## **BUTTON\_DIAL**

Dial/Hang-up the phone.

## **BUTTON\_BROWSE**

Bring up the Browse dialogbox for selecting a file name.

## **BUTTON\_CLEAR**

Delete all file names in the list.

**BUTTON\_CD**  
Switch to CD mode.

## **BUTTON\_MIDI**

Switch to MIDI mode.

## **BUTTON\_WAVE**

Switch to WAVE mode.

**BUTTON\_AVI**  
Switch to AVI mode.

## **BUTTON\_MPEG**

Switch to MPEG mode.



## **BUTTON\_CDI**

Switch to MPEG CD-I mode.

## **BUTTON\_PHONE**

Switch to phone mode.

**BUTTON\_PLAY**  
Play from the beginning.

**BUTTON\_TV**  
Switch to TV mode.

## **BUTTON\_MENU**

Bring up the popup menu.



