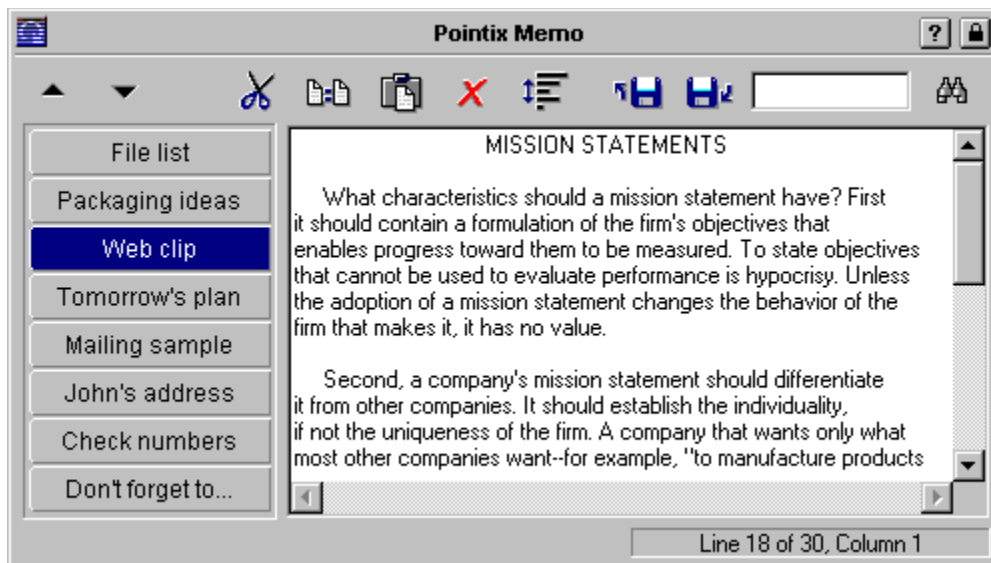


## Pointix Memo

Pointix Memo is a handy floating utility that lets you store and retrieve text clips very easily and comfortably. Pointix Memo has eight “drawers” where you can store any piece of text you know you will need back in a short time. There are many situations during a working day in which you need to annotate a telephone number, write down a fresh idea on paper or store a text clip you found on a web page and that you might need some hours later.

Instead of launching an editor, opening a file and coming up with a name and an appropriate location in your disk (which you will have to remember afterwards), etc. etc., Pointix Memo puts yourself in front of the paper in just a fraction of a second, and it won't require you to save your changes, it will do it for you.

Click on the various areas of the following figure to display a specific topic.



## Menu Options

### Capture Glicks

When this option is set, all glicks done within the application's window are captured, i.e., the command assigned to that glick is not executed. This is to prevent an accidental glick of fading the application's window in the middle of an important operation. Once you get used to Pointix Engine, you might want to turn off this option.

Default: Set

### Keep Selection

Keep the selection status so that when you switch back to that drawer, it looks exactly as you left it.

Default: Set

### Word Wrap

Turns On the Word Wrap feature. It has the same meaning that the analogous Notepad's function.

Default:      Reset

### **Large Font**

Provides an alternative larger font.

Default:      Reset

## Hot Spots

## About Pointix Memo

Module: Pointix Memo  
Version: 1.0  
Copyright: 1997, Pointix Corporation.

## Contact Pointix

### Address

*Pointix Corporation  
1373 SW 23rd St., Miami  
(33154) Florida  
USA*

### URL

<http://www.pointix.com>

### Toll Free Number

[1-888-pointix](tel:1-888-pointix)

### E-mail addresses

_ Technical Support	<a href="mailto:support@pointix.com">support@pointix.com</a>
_ Sales	<a href="mailto:sales@pointix.com">sales@pointix.com</a>
_ General Feedback	<a href="mailto:feedback@pointix.com">feedback@pointix.com</a>
_ Press Releases and _ Investing Information	<a href="mailto:press@pointix.com">press@pointix.com</a>
_ Developers	<a href="mailto:development@pointix.com">development@pointix.com</a>
_ Trade Shows	<a href="mailto:events@pointix.com">events@pointix.com</a>

**Move Up/Move Down**

Moves the active drawer up or down.

## Editing Commands

**Select All**

Selects all the text in the drawer.

**Paste From...**

Pastes data from a file.



**Copy To...**

Copies the selected data on a file.

## Find

Enter the text to search for  
and press the button to the right.

## **Drawers**

Use these buttons to switch between drawers. Click twice to edit label.

