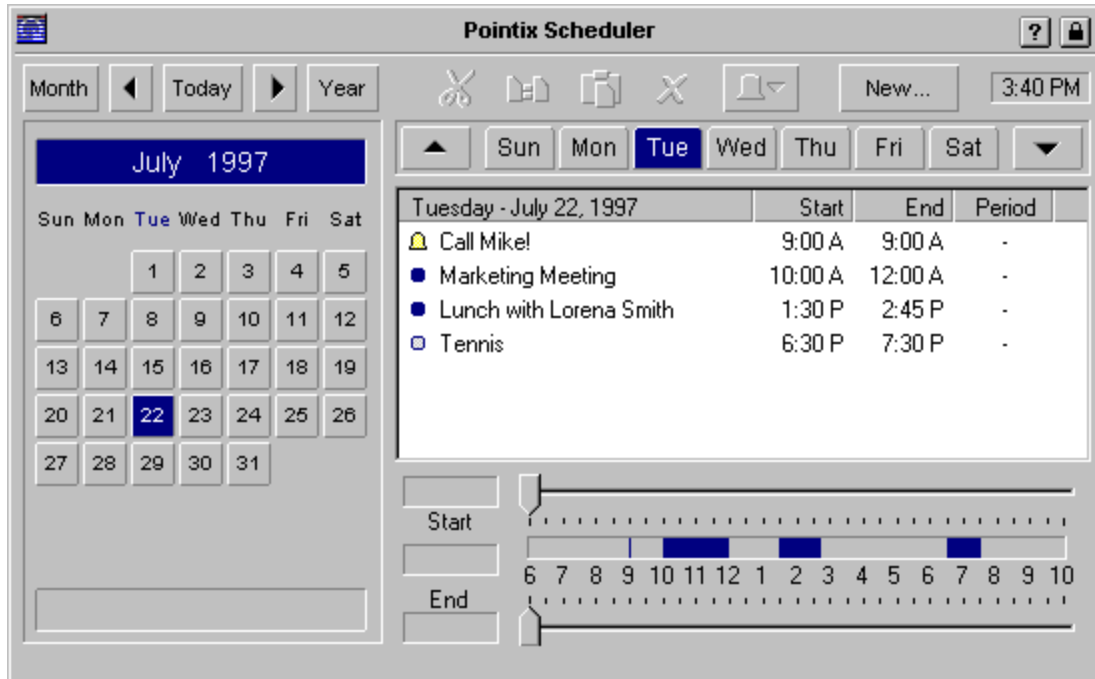


Pointix Scheduler

Pointix Scheduler is a floating utility that lets you keep track of your appointments fast and easily. It lets you perform all the operations found on other scheduler applications, through an easy-to-use and highly optimized interface. While other schedulers need to be launched from outside the application you are in, Pointix Scheduler is always just one glick away!

Click on the various areas of the following figure to display a specific topic.



Menu Options

Capture Glicks

When this option is set, all glicks done within the application's window are captured, i.e., the command assigned to that glick is not executed. This is to prevent an accidental glick of fading the application's window in the middle of an important operation. Once you get used to Pointix Engine, you might want to turn off this option.

Default: Set

Resolution

This option lets you modify the time resolution of the Start-Time and End-Time controls.

Default: 15 Minutes

Full Day Range

This options extends the hour-range of the Start/End controls to 24 hours.

Default: Not set.

24 Hr Clock

This options displays all times in 24 hours format.

Default: Not set.

Alarm

This option modifies the type of alarm action.

Pop-Up: Shows a pop-up window on the upper-right corner of the screen.

Tray icon: Shows a small icon on the system tray (the Task-bar area reserved for icons)

Load Data From Ext. File

Save Data To Ext. File

These menu options let you load and/or save the application's data from/to an external backup file.

Pointix applications use a single internal file for storing all data. This feature allows Pointix Engine to load or unload applications as they are requested without asking you if you want to save changes made to your data, or if you want to save your changes on another file, etc.

Pointix Engine assumes you always work with the same data file, and that only eventually you may need to save your data to a backup file, load data form a backup file, or load data from a file you bring from another computer, etc.

Note: You should always keep backup files of your important data.

Hot Spots

Month

Go to a specific month

Previous Month

Today

Go to the current date

Next Month

Year

Go to a specific year

Editing Commands

Use cut, copy and paste to move/copy
an appointment to a different day

Alarm Options

Use this menu to modify the alarm settings for the selected appointment.

New..

Click here to create a
new appointment.

Previous Week

Week Days

Click on these tabs to navigate the current week.

Next Week

Appointments

Appointments for the current day

Start Time

Drag this control to modify the selected item's starting time.

You can also enter a new appointment by dragging this control when no items are selected.

End Time

Drag this control to modify the selected item's ending time.

Allocated-Time Display/Control

This control shows the allocated time for each item, through the whole hour range. You can modify the time frame of an item by clicking and dragging its rectangle. You can also enter a new item by pointing at the desired start-time and dragging the mouse up to the desired end-time.

Current Month

Current Month Days

Click on the desired day. The week-day area will change accordingly.

Anniversary

This area shows the anniversaries corresponding to the current day (if any). Click on this area to enter/modify the anniversary data.

About Pathfinder

Module: Pointix Scheduler
Version: 1.0
Copyright: 1997, Pointix Corporation.

Contact Pointix

Address

*Pointix Corporation
1373 SW 23rd St., Miami
(33154) Florida
USA*

URL

<http://www.pointix.com>

Toll Free Number

[1-888-pointix](tel:1-888-pointix)

E-mail addresses

_ Technical Support	support@pointix.com
_ Sales	sales@pointix.com
_ General Feedback	feedback@pointix.com
_ Press Releases and _ Investing Information	press@pointix.com
_ Developers	development@pointix.com
_ Trade Shows	events@pointix.com

