



WinArj32 is a Windows-Shell for ARJ-ARCHIVES.

The program lets you archive, add to a archive, create self-extracting archives, list archives, extract archives and extract files from a ARJ ARCHIVE.

WinArj32 will also list files from archives with the following file-extensions:

ZIP, ZOO, LHA, LZ?, ARC, PAK and Microsoft compressed files.(*??_)

WinArj32 has a build-in viewer, to view Text-Files, the files can be send to the printer or copied to the clipboard.

⇒ The Latest Version of WinArj and Winarj25, Winarj95, Winarj98 and Winarj32 is at:

⇒ <http://www.ozemail.com.au/~lasoft>

⇒ <http://www.lasoft-oz.com>

[Add files to a Archive](#)

[Archive Files](#)

[Archive Name](#)

[Destination Drive](#)

[Extract Archive](#)

[Extract Files](#)

[Extract Files to](#)

[List Archive](#)

[Multi Volumes](#)

[Multiple Disks](#)

[Pass Word](#)

[Selecting Files](#)

[Self Ext](#)

[SelfExt Arch](#)

[Source Drive and Files](#)

[Uninstall](#)

[View a File](#)

→

Extract Files

To extract files from a [ARCHIVE](#), you must first list the archive, from where the files are to be extracted from.

Next you select the [DESTINATION](#). Select a Drive and Directory to extract the files to.

Select the file or files to be extracted and press continue

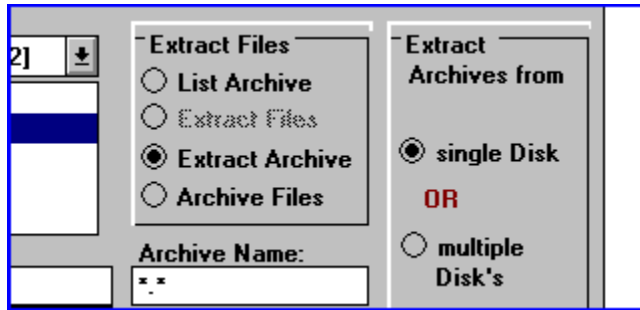
See also

[List Archive](#)

[View a File](#)



Extract Archive



Select the Archive to be extracted, select the [destination](#) directory, (Extract Files to:), Select CONTINUE. The file extension must be "EXE" or "ARJ".

See also

[Extracting Archives from Multiple Disks](#)

[Extract Files to](#)

[Extract Files](#)



Add Files to a Archive

To add files to a Archive select the files to be archived, select the archive and press continue.

If the archive you selected already exist, you will be prompted be a MESSAGE-BOX where you can select.



Select Add to the Archive

Press for O.K.

select add to the archive.

See also

[Multi Volumes](#)

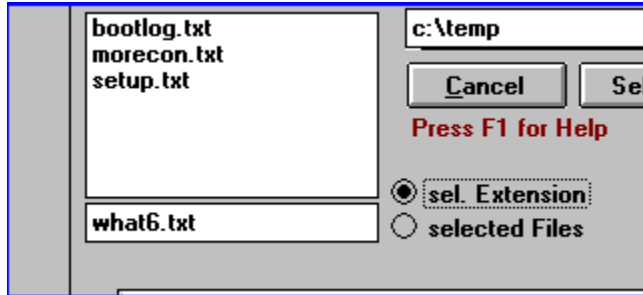
[Archive Files](#)



Archive Files

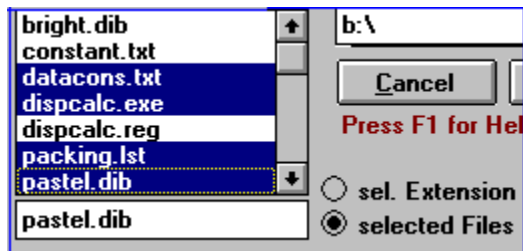
In the SOURCE DRIVE, DIR AND FILE section, select a directory, SELECT the files to be archived by there File-Extension eg. "*.txt" all text Files or "*.*" to archive **all Files**

"Sel.Extension"



or select the files by selecting the option

"selected Files"



See also

[Add Files to a Archive](#)



Self Ext

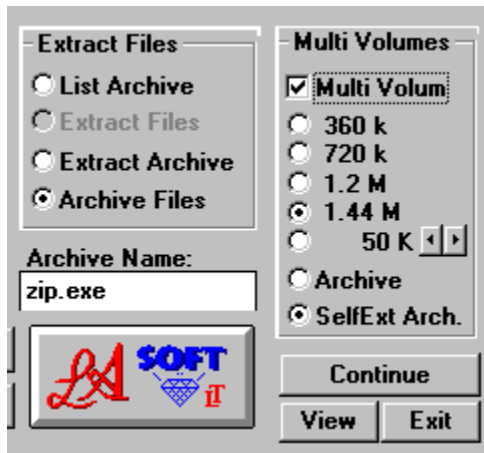
Self Extracting

This option will change a archive with a arj extension in to a Self extracting ARCHIVE

See also

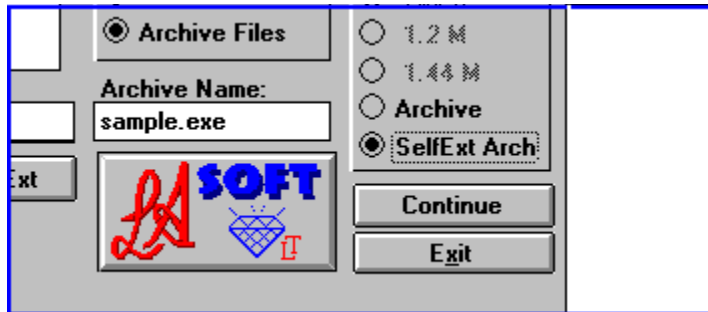
[SelfExt Archives](#)

⇒ **Multi Volumes**



Selecting Multi Volume lets you archive your files over more than one disk. If you select e.g. 360 k, then your files will be archived and compressed, to fit 360k DISK'S, you also can select a [specific file size](#) for your archive.

⇒ **SelfExt Arch**



This Option lets you archive the selected files and/or directories in to a [Self-Extracting](#)-Archive.

See also

[Convert to selfextracting archive](#)



Extract Files To

This is the destination for your files, if the [destination](#) directory doesn't exist and if the name is legal, the program will create the destination directory.

See also

[Destination Drive](#)



Archive Name

Default is the directory name, where the files to be compressed, are located (e.g. C:\TEMP\TEST , would be TEST.ARJ or TEST.EXE, depending if you selected "ARCHIVE" or SELFEXT ARCHIVE). If the file name is not suitable, you can enter a new name under "Archive Name:"



Source Drive and Files

To Archive Files:

Select the DRIVE, DIRECTORY and ARJ Archive (you can also use Wildcards here) e.g. You can select files by "*.txt" (all files with a txt extension, e.g. TEXT.TXT) or "*.*" (all files selected).

See also

Archive Files

To List Files:

Select the DRIVE, DIRECTORY and ARJ Archive (can be ARJ or EXE extension) or a archive with one of the following extensions:

ZIP, ZOO, LHA, LZ?, ARC, PAK and Microsoft compressed files.

From there you can extract a single file, multiple files or the hole archive.
WinArj also lets you view Text-Files.

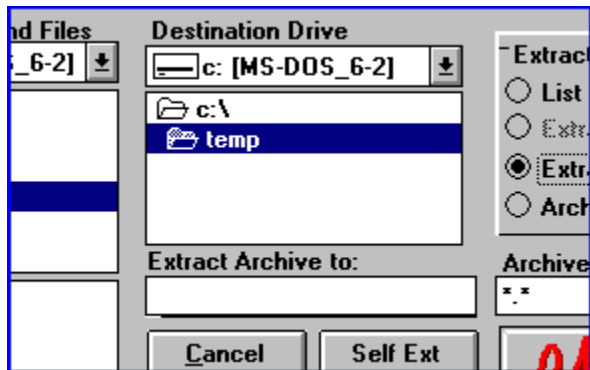
You can only View Or Extract Files and Archives from a ARJ ARCHIVE!

See also

List Archive

View a File

⇒
Destination Drive



This is the directory where you can extract your files to, or save your ARCHIVED files to.



Multiple Disks

Select the Archive to be extracted, select the destination directory, (Extract Files to:), Select multiple Disk from "Extract Archives from", Select CONTINUE. The file extension must be "EXE" or "ARJ".

Select this option to extract archives from more than one disk. If you extract direct from floppy disks, you will get a BEEP to prompt you for the next disk. A faster way would be to copy all the disks to a temp. directory and then extract your files to your destination directory

See also

Multi Volumes

→
Selecting Files

→
Files can be selected by selecting the "sel.Extension", option button or selecting the "selected Files" option button.

sel.Extension:

With this option you select files by there file-extension (e.g. **"*.exe"** or **".exe"** will select all files with a **"exe" extension**) or **"*.*"** will select **all files**

selected Files:

here you can select one files or you can use MULTIPLE-SELECT to extract your files.

→
List Archive

→

In the Source-File List select a ARJ-Archive, or a archive with the following extensions:

ZIP, ZOO, LHA, LZ?, ARC, PAK and Microsoft compressed files.

The program then, will list all files with the same extension (if you select "TEST.EXE", the program will list all files with a **exe extension**).

There are two ways to change the Listed file "Type's"

- 1). you can double-click the file list or
- 2). you can enter the extension of the files to be listed, only enter the extension (e.g. **"*.exe" or ".exe"**).

Select the archive to be listed, and press Continue. You will get a file list from the selected archive, from where you can select, Files (multiple select is OK) to be extracted to your destination directory.

You can not extract single files with out listing the archive first.

To extract a **ARCHIVE**, select the **ARCHIVE**, next select **extract archive and press Continue**.



Pass Word

This switch will encrypt or decrypt an archived file.

Please **save your password in a safe place**. It may be nearly impossible to retrieve your garbled files if you forget your password. There is NO TRICK to recovering a lost password.



View a file

The build-in VIEWER lets you view a text-file (from an ARJ Archive), without extracting the archive. You also can send the file to the printer or copy it to the clipboard.



Recurs SubDirectories

If selected all subdirectories will be included in the archive. Also the files have to be selected by Extension (e.g. "*.*", all files selected!)
Extracting archives with this option selected, will recreate all subdirectories (if they don't exist) and extract the files in to there original directory's.

→ **Include Dir**

This option includes the directory with your archive, where the files to be archived, are located in.

When extracting, this option will include the original directory, if it was included in the archive.

→ **Include Path**

This Option will include the complete path, minus the root directory, in your archive, or when extracting, and the path was included in the archive, the archive will extract in to the original path and directory.

→ **Uninstall**

To Manually Uninstall!

Delete the Winarj32 directory
and
WinArj32.ini in your Windows Directory

You should use ADD/REMOVE Programs from the Control Panel to Uninstall LA Soft's Winarj32, this will also remove the registrar entries. You may still have to delete the Winarj32 Directory.

Extract Files

You must List the archive, before you can extract FILES

Extract Archive

You don't have to list the archive first to extract the archive. Select the archive and the destination directory and press continue.

Single Disk

with this option selected, you extract all files from one disk

Multiple Disks

with this option selected, you can extract your files from more than one disk

Selecting Multi Volumes

with this option selected, you can archive your files over more than one disk.

360k Disk

this option will create archives to fit 360k disk's

720k Disk's

this option creates archives to fit 720k disk's.

1.2 M

this option creates archives to fit 1.2 m disk's

1.44 M

with this option you create files to fit 1.44 m disk's

Create ARJ Archive

this option will create archives with a **ARJ** extension. You will need a Archiver Program to extract files from this archives.

Create Self Ext Archives

with this option selected, you create Self-Extracting-Archives. This archives are usually a little larger, but they don't need a Archiver program to extract the files.

sel.Extension

Selecting files by there extension. If you select a file with a "TXT" extension, the program then, will display all files with a "TXT" extension, if you select "*" this will select all files in the current directory.

You also can select files by typing the extension in the list-box, e.g. (".**TXT**" or "***.txt**"), then all files with a "TXT" extension will be selected.

selecting Files

here you can select one, or more files, multiple select is OK

Overwrite the Archive

by selecting this option you don't actually overwrite the archive, the program renames the original file to "filename.**1AR**" and so on for every archive with the same name to a total of 9AR, after this, when you add a new file, the oldest one will be deleted, this gives a total of 10 back-up files.

Add to the Archive

selecting this option lets you add more files to the selected archive.

Re-Name the Archive

selecting this option gets you back to the main menu, where you can enter a new name for the archive. (rename it)

Archive

A Archive is a storage-utility for one or more files, the files are usually compressed, and the file-size is reduced by 30 to 50% on average.

Destination

this is the destination drive and/or directory where your archive or your files will be extracted to, or where your archive will be saved to.

Selectable Archive Size

this option lets you select the file-size of multiple archives (in multiples of 10k). If you select 800k all your files will be 800k long.

