

What is EZPad?

EZPad is a "text-based" HTML editor for beginners and the more experienced. Many people use Notepad to edit HTML but EZPad offers a lot of features not found in Notepad, such as the ability to open multiple files at once, internal previewers, wizards for almost every HTML tag and a lot more.

EZPad 3.0 comes equipped with Wilbur.hlp which is a good HTML 3.2 reference by WDG, so it helps you learn HTML while you edit your pages. That's why EZPad is good for people who want to learn HTML instead of using idiot proof tools like Netscape Composer or FrontPage.

EZpad 2.0 got very popular in a relatively short time. An example of that is how many people downloaded it and sent us comments and stuff. [Tucows](#) gave EZPad 2.0 4.5 cows out of 5 and [Nonags](#) gave EZPad 2.0 5.5 ducks out of 6.

The Authors

We are Haukur H. Thorsson and Thorgeir Omarsson.
We are both born the year 1980.
We study computers at the Reykjavik technical school.
We call ourselves **Softlce** *software production*.

EZpad on the internet

The Official EZpad homepage: <http://www.mmedia.is/ezpad>
where you can download updates, get news and send us, the [authors](#) e-mail.

Features

Main-Features:

- Multiple files at once
- [Quickopen](#) for quick access to files
- [Internal previewer](#) and the ability to use IE as such.
- Right-click tag editing
- Right-click tag help
- ["Tag-Quick"](#)
- [Project management](#)
- [Template support](#)
- [Image previewer](#)
- Page properties window
- 8 customizable buttons.
- Wizards for almost every HTML tag
- [Imagemap wizard](#) to easily create imagemaps
- HTML helpfile
- Many, many more ...

New in version 3.0

There's quite a difference between EZPad 3.0 and 2.0 when it comes to the features.

This list includes the most significant things.

New:

- Multiple files at once
- Internet Explorer as an [internal previewer](#)
- [Project management](#)
- [Template](#) support
- [Right-click tag editing](#)
- "[Tag-Quick](#)" makes editing tags much easier
- Customizable [colorbar](#)
- [Form Wizard](#)
- [Multimedia Wizard](#)
- [Meta Wizard](#)
- [Imagemap Wizard](#)
- You can select external [programs](#)
- [Kewlstuff](#) includes E-mail forms and more
- HEIGHT and WIDTH for images is automatically filled
- You can modify the contents of the TAG and ATTRIBUTES lists
- Special Characters list
- A lot of new settings in the preferences window
- When you doubleclick images in the [QuickOpen](#) they are opened in the [image previewer](#).
- This helpfile you're reading
- HTML helpfile
- Many more ...

Changes:

- The HTML toolbox is now on a tabbed interface along with the [QuickOpen](#)
- [Find/Replace](#) is now on the main form, instead of a separate window.
- The counter wizard has been removed, since he didn't work in almost all cases.

Improvements:

- The [QuickOpen](#) now has a real win9x look, show the correct icons, etc.
- The [customizeable buttons](#) have been improved.
- The [Table Wizard](#) and the [Frame Wizard](#) have been made smaller since they were too big for 800*600 resolution.
- The [Table Wizard](#) returns a lot better and more understandable code
- The [Link Wizard](#) includes more properties
- The [Body Wizard](#) can now specify images as backgrounds
- A lot more ...

How to contact Softlce?

How do I contact the authors?

You can send e-mail to the following addresses:

- hagur@mmedia.is (Haukur)
- poxy@islandia.is (Thorgeir)

You can also send e-mail directly from the EZpad homepage:

<http://www.mmedia.is/ezpad>

If you want to subscribe to the EZPad mailinglist, you should send e-mail to ezpad@hotmail.com with mailinglist as the subject.

If you want to report bugs, it is recommended to use ezpad@hotmail.com

We get alot of mail every day, but we do our best to answer as soon as possible.

Copyrights and stuff like that ...

EZPad is the property of Haukur H. Thorsson and Thorgeir Omarsson. We can not be held responsible for any damage that could be caused by the program.

EZPad, versions 1,2 and 3 are freeware. You may distribute them freely as long as they are in their original form, in other words, the whole setup project. You may not give away only the exe file for example.

We would like everyone who uses EZPad to send us e-mail, and tell us what they think of it.

The possible e-mail addresses:

ezpad@hotmail.com

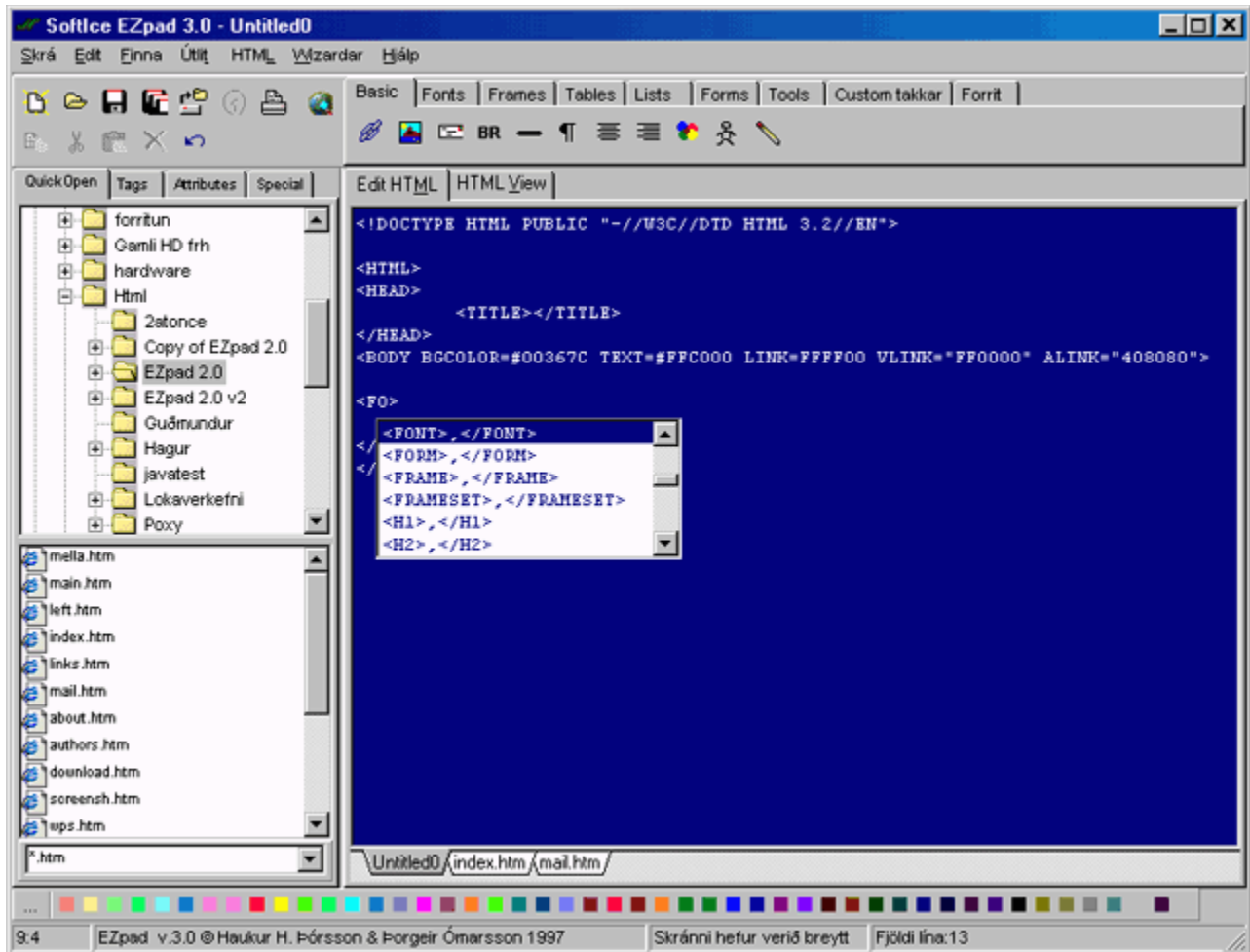
hagur@mmedia.is *Haukur*

poxy@islandia.is *Thorgeir*

The basics

Here's a typical screenshot of the main window. The screenshot is in Icelandic, but that shouldn't be a problem.

Click on the screenshot for more info.



Keyboard shortcuts

CTRL+N	New file
CTRL+O	Open
CTRL+S	Save
CTRL+A	Save all
CTRL+F4	Close
CTRL+F5	Close all
CTRL+D	Refresh from disk
CTRL+Z	Undo
CTRL+C	Copy
CTRL+X	Cut
CTRL+V	Paste
CTRL+F	Find
CTRL+G	Goto line
CTRL+W	Toggles Word wrap
F11	Toggles big edit window
CTRL+Q	Toggles QuickOpen
F4	Refresh QuickOpen
F1	Help
SHIFT+F1	HTML help
CTRL+E	Rightclick tag editing, when you're inside a tag.
CTRL+B	Makes the text bold
CTRL+I	Makes the text Italic
CTRL+U	Underlines the text
CTRL+ENTER	Paragraph, <P>
SHIFT+ENTER	Line break,
CTRL+SPACE	Non-breaking space,
ALT+SHIFT+0..9	Copies text into some of EZpads 10 clipboards
ALT+0..9	Paste text from some of EZpads 10 clipboards
CTRL+1..9	Triggers the customizable buttons, 1..9
CTRL+SHIFT+1..9	Customize the customizable buttons, 1..9

Troubleshooting

Here are the known bugs in EZPad:

This bug is fatal:

When the program is showing the splash screen the following error message comes up:

EOleSyserror in module EZPAD3.EXE at "Some address"

However, the address is not "00082C65", since that was the symptom of the Internet Explorer bug.

If you experience this bug, I think you must look for another HTML editor :(since you are one of the few unlucky ones that have got a computer that EZPad will just not run on. We have absolutely no idea why this occurs.

PS. You could try installing EZPad again ... but ehh ...

When I try to run EZPad or exit EZPad, I get a error message saying something like:

"File/Path or drive is invalid" ...

and I can't exit the program. What the hell is wrong?!

Solution:

You have two options:

1.

Goto file | Options | Preferences and select the "Misc" page. Press the "Uninstall EZPad 3.0" button. Close the preferences window by pressing "OK". Exit EZPad. If it won't let you, then you should press CTRL+ALT+DELETE a few times and select EZPad from the list and press "End Task" each time. After a few seconds Windows should discover that EZPad is behaving badly and you should be able to terminate it. When you run EZPad again, the bug should be gone.

2.

Run regedit.exe (located in the windows directory) Open "HKEY_CURRENT_USER", and open "Software". You should see a "folder" named "EZpad" select it and press delete. When you run EZPad again, the bug should be gone.

By doing either one of the above methods, you lose all your preferences, but the error message will disappear for sure!

If you run into any problems, or discover any bugs, feel free to contact us at

ezpad@hotmail.com

Try to explain the bug, where it occurs and what kind of system you have, which version of Windows and if you have Internet Explorer or not installed.

The QuickOpen

In version 3.0, the QuickOpen is divided into 4 pages.
The first page displays the directory structure of your computer, and if you doubleclick images, they are opened in the [image previewer](#).

You can also drag'n'drop files,
For example:

You drag the file ble.jpg and then you get:

```
<IMG SRC="ble.jpg" HEIGHT="[height]" WIDTH="[width]" ALT="ble.jpg">
```

You drag the file index.htm and then you get:

```
<A HREF="index.htm">index.htm</A>
```

When you're dragging and dropping images, you can choose if the HEIGHT and WIDTH attributes

are automatically filled, and if the ALT tag is filled or not.

For every kind of files you can select if the entire path, just the filename or only the required path is returned.

For more information, see [preferences](#).

Page number 2 (TAGS) displays a list of the most often used HTML tags.
You can insert them on the page by double clicking them, by pressing enter or simply by dragging them to the editor.

Furthermore, you can edit the lists contents. By pressing "insert" on the keyboard, you can add tags to the list, and you can delete from the list by pressing "delete" on the clipboard
Below the list is a little button with an arrow on it. When you press the button, a popup menu appears with tree options:

- Save list as ... You can save the contents of the list to a file with the extension *.lst
- Open list ... You can open other lists
- Load default list Loads the default list (NOTE: Both the TAGS and ATTRIBUTES lists)

Page 3 (ATTRIBUTES) displays the most used attributes.
You can insert them on the page by double clicking them, by pressing enter or simply by dragging them to the editor.
The same applies to this page as the TAG page,
you can edit the ATTRIBUTES list.

Page number 4 (special) displays special characters for HTML.
Among them is the copyright symbol, trademark symbol and more. You can insert them on the page the same way you insert TAGS and ATTRIBUTES.
However, this list is not editable.

The Toolbar

There you find buttons for all of the general functions.

The buttons are (Upper, left corner):

New page, Open file, Save file, Save all open files,
Project management, Refresh from disk, Print, view in browser,
Copy, Cut, Paste, Delete, Undo.

The HTML toolbar

This toolbar includes buttons to launch wizards or to insert tags and attributes. The buttons are arranged in a tabbed interface to make it easier to find what you need.

The pages are:

[Basic](#), [Font](#), [Frames](#), [Tables](#), [Lists](#), [Forms](#), [Tools](#), [Custom buttons and Programs](#)

The filetabs

Each open file has it own tab.
By clicking the tabs you switch
between open files.

The colorbar

The colorbar includes buttons for quick access to colors. By right-clicking on the colorbar you can add, edit and delete buttons. Furthermore you can adjust the position of the colorbar. Available positions are top, bottom and left.

The statusbar

The statusbar gives you various information about the file you are editing.

To the left you see the position of the caret, (Rows)X(Cols).

To the right you get the hint for every object the mouse pointer is currently over.

Beside that, you see whether the file has been changed or not and to the right you see the number of lines in the file.

The menus

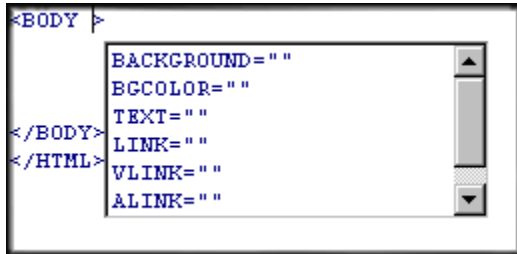
I think I don't have to introduce menus to anyone.

What each menu item does appears on the [statusbar](#)

Tag-Quick

This is a very powerful feature in EZPad.

This is basically a popup list that appears when you enter "<" and displays all available HTML tags and attributes, based on the surrounding text.



Example:

You enter "<" and ">" automatically appears.

Tag-Quick appears and gives you a list of all HTML Tags

Say you choose "**BODY**" from the list. Tag-Quick disappears and you press space. Then you've got "`<BODY >`"

Tag-Quick pops up again, but now only contains the attributes available in the BODY tag, for example "LINK=", "TEXT=" or "BACKGROUND="

The Tag-Quick list uses the contents of the TAGS and ATTRIBUTES pages on the [QuickOpen](#), so whenever you modify their contents, Tag-Quick is automatically updated.

Edit HTML/HTML view

The "Edit HTML" page shows the editor where you actually enter the HTML code, while the "HTML view" page displays the [internal browser](#) and shows you how the page looks like.

Internal browsers

EZPad includes a basic previewer to preview pages, but it doesn't support frames, java or anything like that. It doesn't support any font changes, other than in the BODY tag.

If you've got Internet Explorer 3.01 (build number 1215 or higher) then you can let EZPad use it as an internal previewer.

EZPad uses OLE to open Internet Explorer on the "HTML view" area.

What is good about this is that EZPad uses the version of Internet Explorer you have got installed, so if you upgrade to IE 5.0, EZPad will use IE 5.0

For this to work, you must have the beforementioned version of IE or higher.

Project Management

EZPad 3.0 includes project management, so if you are working on a project containing a lot of files, you can create a single project file that includes all of the required files. When you open the project, all the files are opened.

The project manager is a rather simple window. To the upper-left is a list that displays all the projects found in the `\project` directory within the EZPad directory.

Beside the list are three buttons. The button on the top creates a new project, the middle button deletes the selected project and the last button renames the selected project.

On the middle of the project manager window are another three buttons. "+" to add files, "-" to remove files and the button furthest to the right adds all open files to the project.

Below these three buttons is a list that displays all the files in the current project.

Summary:

New project:

Press the "New" button. Give the new project a name and press "OK". You should see the new project in the list.

Delete project:

Select the project to be deleted and press the "Delete" button. Press "OK" when windows asks you to store it in the recycle bin.

Rename project:

Select the project to be rename. Press the "Rename" button. Enter the new name and press "OK". You should see the project with the new name in the list.

Add files to project:

Select the project you wish to add files to. Press the "+" button and browse for the files. You should see the files in the lower list.

Delete from project:

Choose the file from the lower list you want to delete.
Press the "-" button and the file should disappear.
NOTE: No confirmation is required and the file itself
is not deleted, only the project entry.

Opening projects

Select the project you wish to open and press
"Open project".

Templates

If you work with a lot of files which are all based on the same background color, font types etc. it can be good to save the base as a template. When you need a new file, you simply select FILE | NEW | From templates, and you get the base.

To create a template, you select File | Save as template

The template window displays all the templates found in the **templates** directory within the EZPad directory. When you click a template from the list, you can see how it looks like to the right. Below the preview are three buttons, one to save any modifications made to the preview window, and one button to increase the font size and one to decrease it.

To open a template you can double click it in the list or you can select it and press "OK".

Note: When you open templates, the file is not considered to be modified until you type something in yourself.

Previewing the homepage

To see how the page looks like, you simply flip over to the "HTML view" page, which opens up the selected internal previewer and displays the page. More info about internal previewers can be found [here](#).

Right-click tag editing

This is a quite powerful and comfortable feature in EZPad. When you're inside a tag, you right-click with the mouse and the popup menu pops up, giving you a new option, Edit [tagname] tag. When you click it, the appropriate wizard is opened and filled with the correct values.

For example, BODY:

You have a BODY tag on the page which looks like:

```
<BODY BGCOLOR="FFFFFF" TEXT="000000" LINK="0000FF">
```

When the caret is inside this tag and you right-click with the mouse and select Edit BODY tag from the popup menu, the Body wizard is displayed showing the correct values from the tag.

Say you change the background color to green in the body wizard and press "OK" and you get:

```
<BODY BGCOLOR="00FF00" TEXT="000000" LINK="0000FF">
```

but all the other colors are kept like they were.

Right-click tag editing works on the following tags:

BODY
FONT
A
IMG

More support will be added in the following versions of EZPad.

Page properties

This window displays information about the page and it's divided into four pages, *General information*, *Images*, *links* and *Tags*.

To open the Page properties window, select "HTML | Page properties" from the main menu, or select "Page properties" from the popup menu when you right-click on the editor.

General information:

This page displays the following information:
Filename, path, background, page title, file size and modified date.

Images:

This page displays every image found on the page. By double-clicking an image in the list, you are automatically moved to it in the editor.

Links:

This page displays every link found on the page. By double-clicking a link in the list, you are automatically moved to it in the editor.

Tags:

This page displays all tags on the page, in other words, it displays everything but the text. By double-clicking a tag in the list, you are automatically moved to it in the editor.

The Kewl stuff window

This window helps you create various complicated things like e-mail forms, detour pages and more.

More info about each item can be found on each page in the kewl stuff window.

Jumping to a specific line

By using this window, you can jump to any line in the text. Simply enter the line number and press "GO!".

Finding text

To find text you select "Search | Find" from the main menu, or press CTRL+F. A new panel appears at the bottom of EZPad's main window.

Find this:

This is where you enter the text you want to find.

Replace with:

If you want to replace the text you find with something else, you enter it here.

Whole word:

When this is checked, EZPad only looks for whole words, for example, if you look for "EZ", EZPad will not find "EZ" when it is a part of another word like in "EZPad". However, if this option is not checked, EZPad will find every occurrence of "EZ", also when it is a part of another word.

Search up:

When this is checked, EZPad will search from the current caret position and upwards.

Case sensitive:

When this is checked, EZPad will not consider "HTML" to be the same as "html" for example. If this option is not checked, there will not be made any difference between big and small letters (Uppercase or Lowercase).

Start from top:

When this is checked, EZPad will always start searching from the top of the document.

Find/Find again:

This button serves two purposes. It searches for the word you entered in the "Find this" field, and when you press it again, EZPad continues to search for another occurrences.

Replace rest:

This button replaces the text you entered in the "Find this" field, and replaces it with the text in the "Replace with" field. Note: This button doesn't prompt you to replace or not, it simply

replaces all occurrences found.

Replace/Find again:

This button does the same as the "Replace rest" button does, but it stops when it has replaced a word. That makes it possible for you to skip certain occurrences by pressing the "Find/Find again" button and so forth.

Close

This button simply closes the "Find/Replace" panel.

Enlarging the work area

They who have low resolution monitors have significantly smaller screen area. This makes it extremely nice to be able to close the [QuickOpen](#), the [Toolbar](#) and the [colorbar](#), with a single button/mouseclick to get alot more space for the editor and the HTML view.

To do this you simply select "View | Big edit window" from the main menu or simply by pressing **F11** on your keyboard.

The Clipboard

This window shows you what is on the Windows Clipboard.

At the bottom of the window are three buttons:

Clear:

This button clears the contents of the clipboard.

Send to EZPad:

This button basically does the same as the "Paste" function does. It simply inserts the clipboard contents to the current caret position in the editor.

Help:

Displays the text you're reading right now!

The customizable buttons

This window allows you to customize up to eight buttons, to suit your demand.

In the uppermost field, you enter the caption for the button; the text you want to appear on the button.

In the field below, you enter the hint; the text that appears on the statusbar when the mouse is kept over the button for approx. 1 sec.

In the last field you enter the action, what you want the button to do. By typing in "||" you get the selected text.

For example:

If you want the button to make text one step larger you enter:

```
<FONT SIZE="+1"></FONT>
```

However, it's much more useable to use the "||" feature. For example, if you want to be able to select text and then press the button to make the selected text one step larger, all you have to do is:

```
<FONT SIZE="+1">||</FONT>
```

because EZPad will automatically replace the "||" with the text that was selected when you pressed the button.

In the lower-right corner of the window you select the buttons, 1-9.

Right-click tag help

You can easily get help on the tag you are currently inside by right-clicking with the mouse on the editor. On the top of the popupmenu you will see a new item, "Help on [Tagname]".

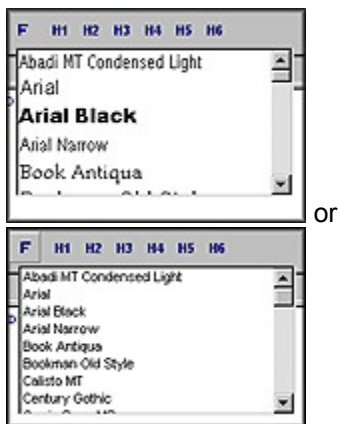
When you click it, the Wilbur.hlp will be opened and the correct topic will be displayed.

The fontlist

The fontlist is a dropdown list that contains all fonts on your computer.

The button to trigger the fontlist is on the "FONTS" page on the [HTML toolbar](#).

By entering the preferences window and flipping over to the "[Misc](#)" page, and fiddling with the "Wysiwyg fontlist" checkbox, you can select whether the fontlist displays the right font for each item, or simply displays all of the fonts with one face, like the below pictures show:



When you click an item in the fontlist, the following is inserted at the current caret position: "``"

The drag'n'drop support explained

EZPad supports drag'n'drop in many ways.

The drag'n'drop support is either on the QuickOpen panel or by dragging from Explorer.

1. Drag'n'drop inside the Quickopen

When you drag files from the QuickOpen to the editor, EZPad creates links to them.

If you drag an image, you get: ``

By entering the preferences window and selecting the "Editor" page, you can select if you want the "HEIGHT" and "WIDTH" attributes to be automatically filled when you drag'n'drop images to the editor.

You can also select if you want the "ALT" attribute to be used.

If the file is not an image, EZPad creates a normal link to it:

```
"<A HREF="[Filename]"></A>"
```

You can also drag'n'drop files within the QuickOpen to copy them.

The TAGS, ATTRIBUTES and SPECIAL pages on the QuickOpen panel all have drag'n'drop capability, you can drag their contents to the editor.

2. Drag'n'drop from Explorer

When you drag'n'drop files from Explorer onto EZPad, they are opened.

You can also drag'n'drop files onto the EZPad shortcut, which will launch EZPad and open the file.

Inserting files

You can insert files to the file you're working on by selecting "File | Insert file ..." from the main menu.

When you have selected the file you wish to insert, it will be inserted at the current caret position.

Importing files

You can let all ASCII files be displayed properly in browsers by selecting "File | Import file".

What this does is basically very "cheap", it simply inserts the file into the current document, at the current caret position, inside the <PRE> tag. "Pre" stands for Preformatted text.

The Body wizard

The Body wizard makes it easier for you to select colors for your page.

To change the color of each item, you simply press the buttons which are positioned to the right of each item.

Be sure to check all the items you wish to use by clicking the checkboxes on the left.

On the right-side of the Body wizard, you can see all changes as you make them.

The Body wizard supports ["rightclick tag editing"](#).

The Color wizard

This is not exactly a wizard, it is simply the standard Windows color dialog, but when you have selected a color and closed the dialog, the color value is automatically converted to HEX, which browsers understand.

The E-mail wizard

The E-mail wizard inserts e-mail links to the current caret position.

In the upper field you enter the e-mail address and in the lower field you enter the text you want to appear on the link.

The Font wizard

The Font wizard makes it easier for you to configure font sizes, colors and faces.

First you select the font size from the list. If the size you want is not in the list, you can enter it.

Then you choose the font face from the list. The list displays all fonts on your system, so you shouldn't have to enter anything by your self.

Then you select the alternative face. If the one who is browsing your page hasn't got the font face you declared above, the alternative font face will be used.

Finally you can change the font color.

Be sure to check each item you wish to be added by checking the checkbox in front of each item.

The Font wizard supports ["rightclick tag editing"](#).

The Form wizard

The Form wizard helps you to set up the FORM tag.

In the uppermost field you enter the action. Generally, forms are used to send some kind of information through e-mail, so you would enter the e-mail address in to the field.

In the field below, you select the method. Should the form post information or get information? Since you entered an e-mail address into the first field, you would select "post" from the list, since the form is supposed to send data.

In the lowest field you select the encryption type. "Text/plain" is often used.

Then you can use "[Form elements](#)" to create buttons, checkboxes and more for your form.

More info about the FORM tag, can be found in the Wilbur.hlp file.

Form elements

This wizard helps you to insert elements such as buttons, checkboxes and more to your [FORMS](#)

The window is divided into 5 pages.

Text input:

Text input boxes can only hold a single line of text. Simply fill out all the information required and press the "OK" button.

Text area:

The text area can hold multiple lines of text, just like the Memo control in Windows which is used in programs like Notepad etc. Simply fill out all the information required and press the "OK" button.

Combobox:

Comboboxes are basically dropdown lists where you can select items. Simply fill out all the information required and press the "OK"

Checkbox:

Checkboxes are either set to true (checked) or false (not checked). Simply fill out all the information required and press the "OK"

Option:

Option buttons are always used in groups, where only one can be selected at a time. Simply fill out all the information required and press the "OK"

More information about form elements can be found in the Wilbur.hlp file.

The Frame wizard

Frames are very popular on the net, because it is rather simple to use frames to create sites that are easy to navigate.

The Frame wizard in EZPad 3.0 makes it easier for you to create frames.

At the top of the window you have 9 different frame configurations.

Simply select the one you think is appropriate and then you set the options for each frame.

The frames are color coded and the settings for each frame are coded in the same color.

You have to give each frame a name and you have to "tell" each frame which html file to display.

For more information about frames, launch the Wilbur.hlp file.

The Homepage wizard

The Homepage wizard was meant for those who don't know anything about HTML.

You simply have to fill in the blanks at each step and when you have finished the final step, the page is made for you.

The pages made by the Homepage wizard show only the simplest in HTML design. The outcome is in no way professional, it's up to you to mess with the HTML code to make the page look cooler!

The Image wizard

By using the Image wizard, you can insert images to your page more quickly and efficiently. The Image wizard automatically fills the HEIGHT and WIDTH attributes with the correct values and it also fills out the ALT attribute.

You have to check the checkbox next to each item you wish to include.

The Image wizard supports ["rightclick tag editing"](#).

The Imagemap wizard

An Imagemap is an image that can include one or more links. The image can be divided into multiple areas, each area linking to a document etc. It can be pretty darn complicated to create an imagemap manually, since the areas are set up by using coordinates. The Imagemap wizard makes it much easier.

First you have to specify an image by pressing "select image".

You can choose between three types of shapes:

- Rectangle
- Circle
- Cube

Simply drag'n'drop the shapes onto the image to create areas.

A few points:

Selected shapes are colored red.

When you create/select a shape, it's properties are displayed to the right, where you enter the URL of the file you wish to link to. You can also change the size of the shape by clicking the arrows on the height, width, left and top fields.

To delete shape, you click it with the right mousebutton.

When the shape is at the desired position, you can lock it, so you won't accidentally move it.

At the top of the properties panel is a dropdown list which displays all of the shapes on the image.

When you're satisfied with your work, simply press the "OK" button and the imagemap is immediately created.

The List wizard

The List wizard helps you to create HTML lists for your pages.

You can select between four types of lists, each type containing some sub-types.

To add items to the list, you enter text into the "New line" field and press ENTER on your keyboard or "Add to list". You can select items from the list and delete them by pressing the "Delete" button.

To clear the entire list, press "Clear all".

The Link wizard

The Link wizard makes it easier for you to create links.

First, you enter the text you want to appear on the link.
Then you enter the URL of the page you want to link to.
Then you can select which target to use, but targets are normally only used in conjunction with FRAMES.
More information about FRAMES and targets can be found in the Wilbur.hlp file.
Finally you can name the link, but it's rather uncommon.

You can use an image on the link instead of text. To do that you press the "Use image for the link instead of text" button. This will launch the Image wizard, where you will select an image and set its attributes. When you close the Image wizard the code will be filled into the text field at the top of the Link wizard.

You have to check the checkbox in front of every item you wish to include, like in the Body wizard and Font wizard for example.

The Link wizard supports ["rightclick tag editing"](#).

The Multimedia wizard

By using the Multimedia wizard, you can easily embed MIDI, WAVE and AVI files to your pages.

First you select the file, then you can mess around with the HEIGHT,WIDTH and BORDER properties.

At the bottom of the window, you can see a common set of controls to play the file.

The Meta wizard

META tags are usually the first tags inside the HEAD tag in HTML documents.

The Meta wizard in EZPad makes it easier for you to declare the author, keywords and description tags for your page.

In the "keywords" field you enter the keywords for your page, for example what your page is about. Keywords are used by search engines.

In the description field you enter a short description of you page. When a search engine finds you page, it displays your description below the link. If you haven't got any description, the first sentences on your page are used instead, but they might not always be appropriate.

More information about the META tag can be found in the Wilbur.hlp file.

The Table wizard

Tables are one of the most complicated tags in HTML.

The Table wizard in EZPad 3.0 makes creating tables alot easier. At the top of the window, you have the properties panel where you can change all the attributes of the table.

Below the properties panel is a simple grid, like you might know from Microsoft Excel. You simply enter text into the cells.

At the bottom of the page is a window which shows the HTML code. If you check the "Update source" checkbox, the source code is updated every time you make changes to the table.

When you've finished designing the table, simply press the "OK" button and the table source will be inserted at the current caret position.

Preferences - Editor

On this page, you can change various settings that have got to do with editor.

Background color:

Press the button to select a new background color for the editor.

Font:

Press the button to select a new font for the editor.

EZPad starts with:

This is a list of all the templates found in the **templates** directory, within the EZPad directory. You can select which template EZPad should start with, everytime you launch it.

Drag'n'drop:

The following settings only apply when you drag files from the QuickOpen filepanel, or when you drag images from Windows.

Return full path

When files are dragged from the QuickOpen to the editor, the full path is returned.

Return filename only

When files are dragged from the QuickOpen to the editor, only the filename is returned.

Return relative path

When files are dragged from the QuickOpen to the editor, only the necessary path is returned.

Return image sizes

When images are dragged from the QuickOpen to the editor, the HEIGHT and WIDTH attributes are automatically filled with the right values.

Return image name in "ALT"

When images are dragged from the QuickOpen to the editor, the filename is specified in the ALT attribute.

Return image size in "ALT"

When images are dragged from the QuickOpen to the editor, the image size is specified in the ALT attribute.

Set BORDER="0"

When images are dragged from the QuickOpen to the editor, the BORDER attribute is set to "0", which means there will be no border around the image.

Preferences - HTML view

On this page you select which internal previewer to use, and more.

Use the default previewer which comes with EZPad

When this is selected, the default previewer is used. It doesn't support frames, java or other advanced things, but it's rather fast.

Use Internet Explorer 3.01 or higher

When this is selected, the version of Internet Explorer you have got installed, is used as an internal previewer. To be able to use this option, you must have atleast version 3.01 of IE.

More info about [internal browsers](#).

Close QuickOpen when using previewers

When this option is selected, the QuickOpen panel is automatically closed when you flip over to the "HTML view" page. This gives the internal previewer more space on the screen.

At the bottom of the window are settings only for the default internal previewer.

Visited links

By pressing this button you can select which color to use on the visited links, if no color is specified inside the BODY tag.

Links

By pressing this button you can select which color to use on the links, if no color is specified inside the BODY tag.

Background

By pressing this button you can select which background color to use if no background color is specified inside the BODY tag.

Font

Here you select which font the previewer uses.

Font color

Here you select which color should be the default color for the text inside the previewer. The previewer does support text color changes, but only inside the BODY tag, for example: `TEXT=" [Color] "`.

Underline links

Here you select if you want links to be underlined or not.

Preferences - Tag-Quick

This page has got to do with the Tag-Quick feature.

Tag-Quick enabled

Here you select whether you want Tag-Quick to be enabled or disabled.

Popup delay

Here you can set the popup delay, the time that passes until the the Tag-Quick list pops up after you have pressed "<" (or "space" when inside a tag).

The time is in thousandth of a second, and you can select from 0 to 2000ms (No delay - 2 seconds).

Preferences - Other programs

On this page, you select which applications to use to edit images, uploading files (FTP client) and which external browser to use.

On each page is a button to browse after the program.

On the "external browser" page are three more options:

When the external browser is launched, it should be displayed ...

... Normally

The size and position of the browser depends on it's own settings.

... Maximized

The browser is displayed full-screen.

... Minimized

The browser is display as a button on the taskbar.

Preferences - Misc.

This page includes all the options that weren't appropriate on the other pages. :)

EZPad adds "Edit" to these extensions:

You can let EZPad add a new action to filetypes of your choice, so when you right-click these types in Explorer, you can see a new item on the popupmenu, "Edit with EZPad".

Add

You enter an extension in the field below the list and press the "Add" button to add it.

Delete

Simply select the extension from the list and press the "Delete" button.

Edit

You select the extension you want to edit, and enter the new extension in the field below the list. When you press the "Edit" button, the selected extension is replaced by the one in the field.

Load default list

When you press this button the list is replaced by the default one which includes:
HTML, HTM, BAT, INI, TXT and ASP

Uninstall EZPad 3.0

EZPad saves all of your settings to the Windows Registry file. If you decide to uninstall EZPad, you should first press this button to clear the settings from the registry, since the uninstall program in the Control Panel | Add/Remove programs, doesn't do this for you.

If you press this button, but decide not to uninstall EZPad, the operation can be easily canceled. Simply close the preference dialog by pressing "Cancel". By doing so, you prevent the settings from being deleted when you exit EZPad.

Wysiwyg fontlist

This option allows you to select the appearance of the [fontlist](#).

Clear wizards after each use

If this option is selected, the wizards are cleared everytime you close them.

This is done by default everytime you close EZPad.

The Image previewer

When you double click images in the QuickOpen filepanel, they are opened in the Image previewer.

At the top of the Image previewer window are three buttons:

As link

A link is created to the image, at the current caret position:

```
<A HREF="image.jpg">image.jpg</A>
```

As image

An image tag is created at the current caret position:

```
<IMG SRC="image.jpg" WIDTH="300" HEIGHT="300 " ALT="image.jpg">
```

Edit

The image application you selected in the [preferences | other programs](#) page, is launched and the image is opened in it.

Below these three buttons is a checkbox, "**Force image to frame**". If you check this option, the image is forced to fit the frame.

Below the checkbox is a history list, which stores all the images you have viewed in the current EZPad session. This list is cleared everytime you exit EZPad.

To the right of the history list, is the previewing area itself, or the so called "frame".

