

BackupLatest Help File



[What is BackupLatest?](#)

[The 'Options' button.](#)

[Running BackupLatest from the command line.](#)

[Program limitations, FAQ, and disclaimers.](#)

What does BackupLatest do?

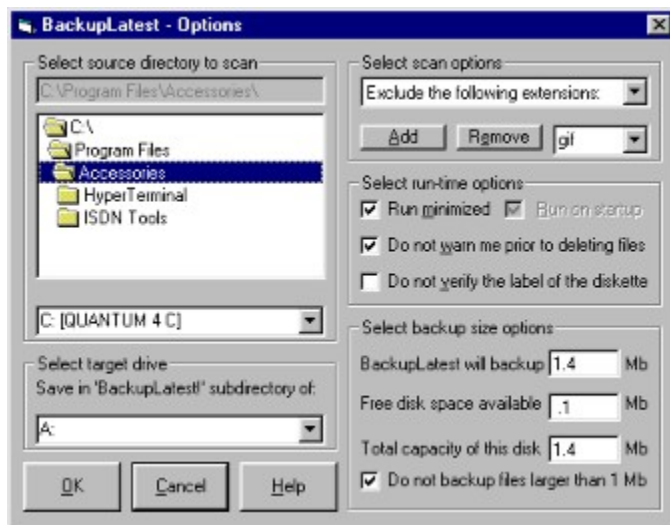
BackupLatest backs up the most recently modified files. After the initialization, it scans the directory selected by the user and finds the files with the most recent time stamp. It then saves them on the drive mirroring the tree structure of the source directory. The amount of saved information can be set by the user, so one can for example save the most recent 1.4Mb of documents to the floppy disk.

This small program is useful in case of the computer's crash: the most recently modified files from the user selected directory are available on the floppy or other drive without the hassle of moving the hard drive to a working machine or using tape backups.

The backup can be run minimized and can be run automatically when it starts, without the user having to press the Start button. Those features are useful when BackupLatest is run through a scheduling program. If BackupLatest is scheduled to backup to a diskette it will check its identity (the volume label of the target diskette has to be 'LATEST'), unless this option is disabled. This is useful if one schedules BackupLatest for an automatic execution and leaves a diskette in the drive permanently.

This new version allows for running BackupLatest with the command line parameters. One can create a batch file that would backup multiple directories to multiple drives.

The 'Options' Window



Select source directory to scan - allows you to select the drive and subdirectory with the files you want to backup.

Select target drive - you can select any valid drive available on your system.

Select scan options - allows for selection of the following options:

Scan all files - scans for files with all extensions

Include only following extensions - will backup only files with specified extensions.

Exclude the following extensions - will not backup files with specified extensions.

Use 'Add' and 'Remove' to add or remove extensions to or from the list.

Run minimized - select this option to have the BackupLatest run minimized. This is good for scheduled execution, so the distraction is minimal.

Run on startup - this will make the program start scanning automatically without user having to press the 'Start' button. This option is selected by default when 'run minimized' is enabled.

Do not warn me prior to deleting files - prior to saving the backup files, BackupLatest deletes previous backup. This option allows for disabling the warning prior to this operation. Again, useful for scheduled execution.

Do not verify the label of the diskette - will disable verification that the volume label of the diskette is 'LATEST'. Not really recommended, but requested by some users, so here it is. This setting will not affect fixed or removable hard drives, since their volume labels are not checked.

BackupLatest will backup - you can set the amount of data to be backed up (in Mb).

Free disk space available - tells you how much space you have left on the disk. Note that if you already backed up something to the drive using BackupLatest, this previous backup will be deleted and will increasing your free space.

Total capacity of the disk - your total disk space. Use this information to plan the size of your backups.

Do not back up files larger than 1Mb - most users have relatively small documents (~100kB). You can use this option to make BackupLatest skip files that likely are not documents.

The command line parameters.

This option enables the user to quickly backup a directory without changing global BackupLatest settings. This is useful if one backs up one directory routinely (through a scheduler like System Agent), but from time to time wants to manually back up a different directory. It can also be used to run BackupLatest from a batch file.

The command line has the following syntax:

```
backuplatest s/SourcePath d/TargetDrive
```

For example:

```
backuplatest s/c:\My Documents\New Project\ d/a:
```

will back up most recently modified files from c:\My Documents\New Project\ into the directory BackupLatest! On drive A.

The global BackupLatest settings are preserved, but when the program is called from the command line it defaults to:

- ü Run minimized
- ü Run on startup
- ü Do not warn me prior to deleting files

After finished it also exits without delay.

What you should know about BackupLatest.

Known limitations:

- 1) Hidden files are not recognized during the scan, so they are not saved
- 2) Drive C: has to be the boot drive
- 3) Not tested under Windows NT
- 4) To use BackupLatest over the network you have to 'Map' the network drive

Most FAQ: Why is BackupLatest saving only (for example) 3Mb of data if I asked it to save (for example) 5Mb?

A: Most likely the next file that would have to be saved was larger than 2Mb so if it was saved the total backup would have exceeded 5Mb.

Fine print:

BackupLatest is FREEWARE. You can distribute it as long as you do not change it. The program is 'as-is'. No warranty expressed or implied. The author is not responsible for the performance of the program, lack of performance or loss of data.

You can contact the author at krys-@geocities.com.

The newest version of BackupLatest is available at:
<http://www.geocities.com/SiliconValley/Bay/2965/backuplatest.html>

