



Desktop+ v1.3

[How to Register](#)

[Copyright Notice](#)

[Overview](#)

- [Cursors](#)
- [Screen Saver](#)
- [Sound Changer](#)
- [Wallpaper Animate](#)
- [Wallpaper Changer](#)

[Whats New & Version History](#)

[Where to find the latest Shareware Version](#)

[How to get Support](#)

[Removing GTI Desktop+](#)

[ASP Ombudsman Statement](#)

How to Register

If you are using the Shareware version of **GTI Desktop+** you may evaluate it for 30 days. The Shareware version of **GTI Desktop+** will time-out after 30 days. If you wish to continue using **GTI Desktop+** after this time you must register it.

To receive the registered version (or if you already have a copy of the registered version and wish to order additional copies) of **GTI Desktop+** and a free copy of +Pack 1, please contact one of the Distributors listed below (**Note** the details below are for orders only, please refer to the How to get Support help topic for details of how to obtain Technical Support)

Germany U.K. U.S.A.
All other Countries

On-Line Registration

If you prefer to register on-line you can do this via one of the following methods

World Wide Web Point your Web browser at GTI's *World Wide Web Page* <http://www.compulink.co.uk/~gti/>

Bitnova Omni-Mall **GTI Desktop+** id number is **GTI-003**. To access the Omni-Mall system type **go omnimall** at any Bitnova prompt and then follow the instructions on screen.

CompuServe SWREG **GTI Desktop+** SWREG number is **6928**. To access the swreg system type **go swreg** at any CompuServe prompt and then follow the instructions on screen.

Large Orders

For details of Multiple User, Site Licenses or Customised Screen Savers & Wallpapers please contact G.T.I. at the above U.K. address or send e-mail to sales@gti.compulink.co.uk .

Note Additional +Packs are only available from G.T.I.

GTI Desktop+ V1.3 Registration Form

Name: _____

Address: _____

City: _____

Postcode: _____ Country: _____

E-Mail: _____

Please send me :-

(Sterling) or (US) Sub Total

_____ Copies GTI Desktop+ @ £20* \$40* _____
(& +Pack 1)

_____ Copies +Pack 2 @ £10* \$20* _____

_____ Copies +Pack 3 @ £10* \$20* _____

_____ Copies +Pack 4 @ £10* \$20* _____

VAT _____

Total Enclosed is _____

(* Residents of member States of the European Union please also add VAT @ 17.5%.)

I am paying by:

- CHEQUE CASH (by registered mail only, please) ACCESS
 AMERICAN EXPRESS EUROCARD MASTERCARD VISA

Credit Card Number _____ - _____ - _____ - _____

Valid from date ____ - ____ Exp. date ____ - ____

_____ - _____ - _____

(Signature)

(Date)

Make cheques payable to: **Graham Technology & Information Ltd.**

Where did you hear about GTI Desktop+ ?

Comments: _____

Send your completed order to: **G.T.I. Ltd**
9 / 18 Mavisbank Gardens
Festival Park
Glasgow, G51 1HG
Scotland

Overview

GTI Desktop+ is a set of integrated desktop utilities for MS Windows. It includes screen savers, a screen saver randomizer, animated wallpaper, random wallpaper changer, custom cursors and a random startup/exit sound changer. All of these features are controlled through one simple integrated package.

(**GTI Desktop+** is designed for Windows 3.X, but many of its features will work under Windows95 & WindowsNT. Please refer to the Help Topics below for further details)

The 5 main components of **GTI Desktop+** are

- [Cursors](#)
- [Screen Saver](#)
- [Sound Changer](#)
- [Wallpaper Animate](#)
- [Wallpaper Changer](#)

Note The shareware version of **GTI Desktop+** will cease to work 30 days after it was initially installed

+Pack`s

+Pack`s are add-on packages for **GTI Desktop+** that add extra *Cursors*, *Screen Savers*, *Animated Wallpaper* and *Wallpapers* to those which come as standard with **GTI Desktop+**.

+Pack 1 (Free with registered Version)

Includes 3 additional screen savers, 2 of which feature Photo Realistic graphics. 2 of the screen savers can also be used as animated Wallpapers. Additional cursors, .bmp & .wav files are also included

+Pack 2

Features the Videorama screen saver, which can turn any avi file into a screen saver. *(Requires Video for Windows Runtime)*

+Pack 3

Is a themed Lines & Shapes pack which includes several screen savers and wallpapers.

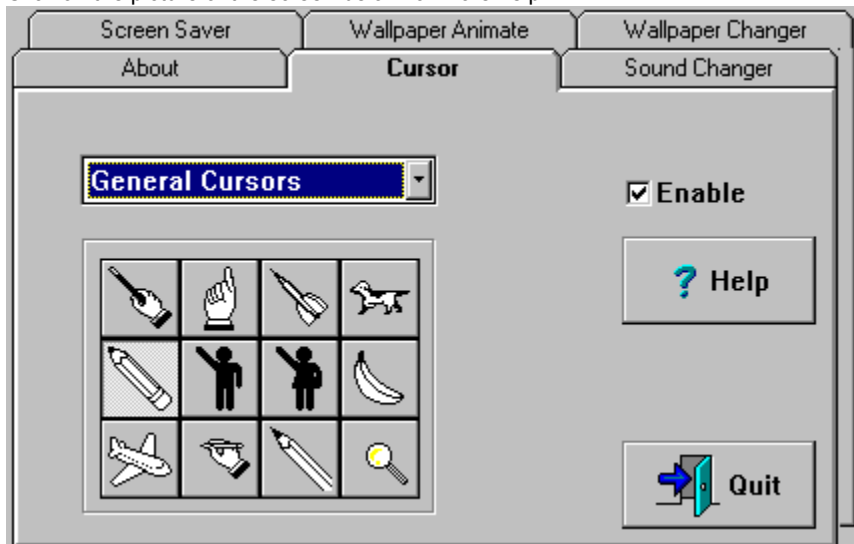
+Pack 4

Is a 3D themed pack. All screen savers & wallpapers feature 3D objects.

Cursors

The *Cursor* page allows you to change the standard Windows Cursor.

Click on the picture of the screen below for more help

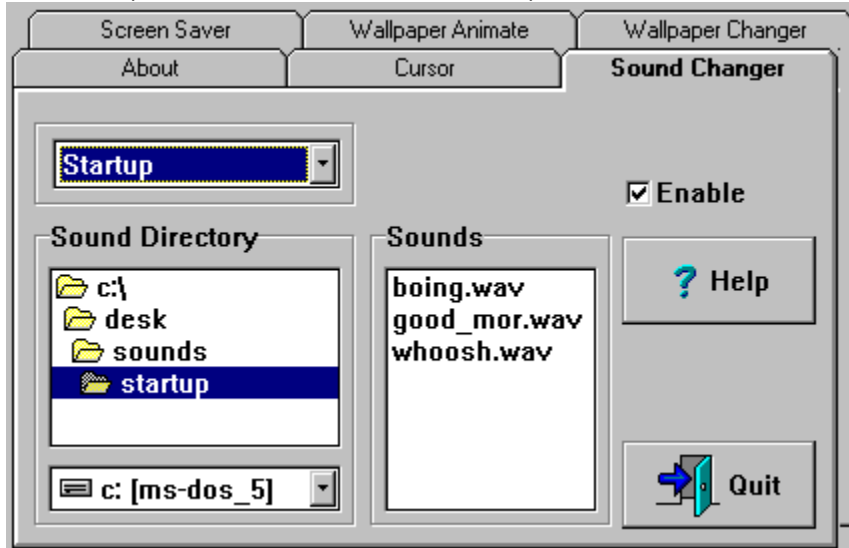


Note This feature is not available under WindowsNT and has limited support under Windows95

Sound Changer

The *Sound Changer* randomly changes the Windows Startup & Exit sounds to one of the sounds in the currently selected directory.

Click on the picture of the screen below for more help



Note To use this feature in WindowsNT & Windows95 ensure that you do not have a Sound Scheme selected.

Wallpaper Animate

Click on the picture of the screen below for more help

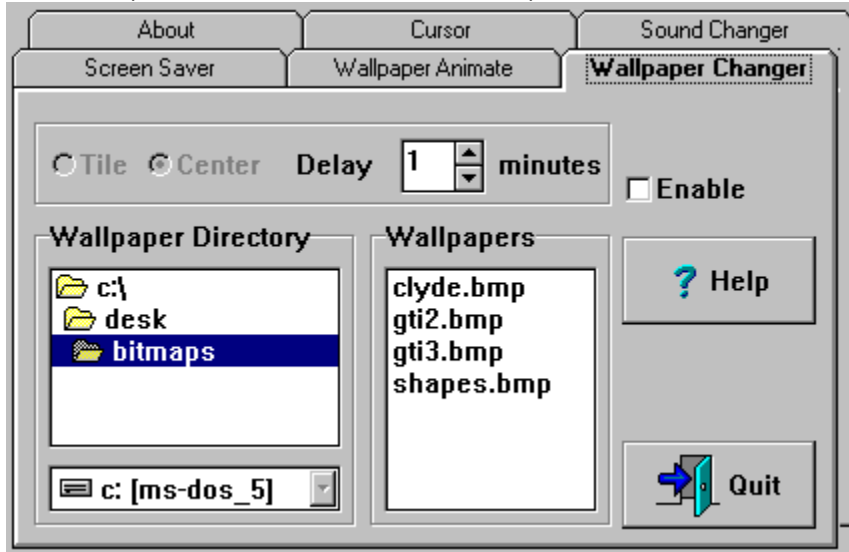


Note This feature is not available under Windows 95 or WindowsNT

Wallpaper Changer

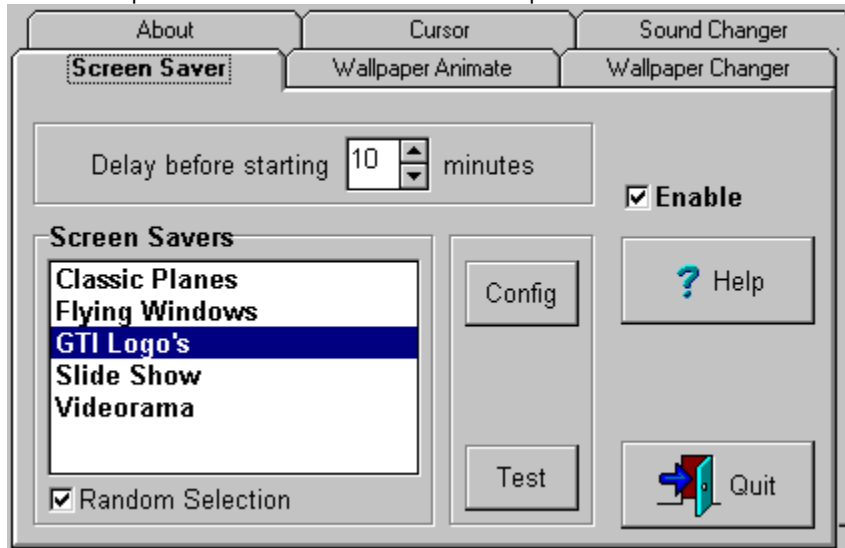
The wallpaper changer randomly changes the wallpaper to one of the wallpapers in the currently selected directory. The delay between changes is user configurable.

Click on the picture of the screen below for more help



Screen Saver

Click on the picture of the screen below for more help



If you have existing Screen Saver files that have a .SCR extension you can use [GTI Desktop+](#) to play these as well. Simply copy these files to the `ssaver` directory in the directory where you installed [GTI Desktop+](#) i.e. if you installed [GTI Desktop+](#) to the default directory you would copy your .SCR files to `c:\gtidesk\ssaver`.

Note Ensure you disable all other screen savers before activating the screen saver functions of [GTI Desktop+](#). For best results ensure you set your screen driver to at least 256 colours.

Enable Checkbox

Checking the *Enable* Checkbox will enable/disable the current tab pages functions.

Help Button

Press the *help* button to display the help for the current tab.

For context sensitive help :-

Select the item you want to see help for

then press the **F1** key

Delay Spinner

Click on the up & down arrows to increase or decrease the delay (in minutes) before the function begins.

Wallpaper

Wallpaper is the term used for the background of your windows desktop. Please refer to your windows manuals for a more detailed explanation.

Quit Button

Press the Quit button to exit GTI Desktop+ .

Tab Pages

Click on the *Tab* to switch to that *Tab Page*.

Copyright Notice & License

GTI Desktop+ copyright © 1995,1996 Graham Technology & Information Ltd. All rights reserved.

GTI Desktop+, GTI +Pack and the GTI logo are Trademarks of Graham Technology & Information Ltd.

All other Trademarks are acknowledged.

This software and accompanying documentation are protected by United Kingdom Copyright law and also by International Treaty provisions. Any use of this software in violation of Copyright law or the terms of this limited license will be prosecuted to the best of our ability.

License (Shareware Version) License (Registered Version)

To find out which version of **GTI Desktop+** you are using, and therefore which of the above licenses apply to you, please refer to the *About* tab in the **GTI Desktop+ Control Centre** . This will state if you have the Shareware or Registered version of **GTI Desktop+**.

LIMITED WARRANTY AND DISCLAIMER OF WARRANTY

(Shareware & Registered Version)

THIS SOFTWARE AND ACCOMPANYING WRITTEN MATERIALS (INCLUDING INSTRUCTIONS FOR USE) ARE PROVIDED "AS IS" WITHOUT WARRANTY OF ANY KIND. FURTHER, GRAHAM TECHNOLOGY & INFORMATION LTD (GTI) DOES NOT WARRANT, GUARANTEE, OR MAKE ANY REPRESENTATIONS REGARDING THE USE, OR THE RESULTS OF USE, OF THE SOFTWARE OR WRITTEN MATERIALS IN TERMS OF CORRECTNESS, ACCURACY, RELIABILITY, CURRENTNESS, OR OTHERWISE. THE ENTIRE RISK AS TO THE RESULTS AND PERFORMANCE OF THE SOFTWARE IS ASSUMED BY YOU. IF THE SOFTWARE OR WRITTEN MATERIALS ARE DEFECTIVE YOU, AND NOT GTI OR ITS DEALERS, DISTRIBUTORS, AGENTS, OR EMPLOYEES, ASSUME THE ENTIRE COST OF ALL NECESSARY SERVICING, REPAIR, OR CORRECTION.

THE ABOVE IS THE ONLY WARRANTY OF ANY KIND, EITHER EXPRESS OR IMPLIED, INCLUDING BUT NOT LIMITED TO THE IMPLIED WARRANTIES OF MERCHANTABILITY AND FITNESS FOR A PARTICULAR PURPOSE, THAT IS MADE BY GTI, ON THIS GTI PRODUCT. NO ORAL OR WRITTEN INFORMATION OR ADVICE GIVEN BY GTI, ITS DEALERS, DISTRIBUTORS, AGENTS OR EMPLOYEES SHALL CREATE A WARRANTY OR IN ANY WAY INCREASE THE SCOPE OF THIS WARRANTY AND YOU MAY NOT RELY ON ANY SUCH INFORMATION OR ADVICE. YOU MAY HAVE OTHER RIGHTS WHICH VARY FROM STATE TO STATE.

NEITHER GTI NOR ANYONE ELSE WHO HAS BEEN INVOLVED IN THE CREATION, PRODUCTION OR DELIVERY OF THIS PRODUCT SHALL BE LIABLE FOR ANY DIRECT, INDIRECT, CONSEQUENTIAL OR INCIDENTAL DAMAGES (INCLUDING DAMAGES FOR LOSS OF BUSINESS PROFITS, BUSINESS INTERRUPTION, LOSS OF BUSINESS INFORMATION, AND THE LIKE) ARISING OUT OF THE USE OR INABILITY TO USE SUCH PRODUCT EVEN IF GTI HAS BEEN ADVISED OF THE POSSIBILITY OF SUCH DAMAGES.

THIS LIMITED WARRANTY SHALL BE GOVERNED BY THE LAWS OF SCOTLAND. THE UNITED NATIONS CONVENTION ON CONTRACTS FOR THE INTERNATIONAL SALE OF GOODS IS SPECIFICALLY DISCLAIMED.

BY USING GTI DESKTOP+ YOU ACKNOWLEDGE THAT YOU HAVE READ THIS LIMITED WARRANTY, UNDERSTAND IT, AND AGREE TO BE BOUND BY ITS' TERMS AND CONDITIONS. YOU ALSO AGREE THAT THE LIMITED WARRANTY IS THE COMPLETE AND EXCLUSIVE STATEMENT OF AGREEMENT BETWEEN THE PARTIES AND SUPERSEDE ALL

PROPOSALS OR PRIOR AGREEMENTS, ORAL OR WRITTEN, AND ANY OTHER COMMUNICATIONS BETWEEN THE PARTIES RELATING TO THE SUBJECT MATTER OF THE LIMITED WARRANTY.

Directory Change Box

The directory change box allows you to set the default directory for the current function.

To change directory double-click through the icons until the directory you want is selected.

Drive Change Box

The drive change box lets you select the default drive for the current function.

To change the default drive click on the down arrow to list the available drives and then click on the drive you want to select

Sound Files

List of sound files in the current directory

Center Wallpaper

Click this if you want to center the wallpaper.

Tile Wallpaper

Click this if you want to tile the wallpaper.

Wallpaper List

List of wallpaper (.bmp) files in the current directory.

Screen Saver List

List of screen savers you can select. Click on the one you want to use.

Config Button

Lets you configure the currently selected screen saver.

Test Button

Launches the currently selected screen saver.

Cursor Buttons

Your default cursor will be set to the picture on which ever button you press.

Cursor List

List of the all the files containing custom cursors.

Animated Wallpaper List

List of animated wallpapers you can select. Click on the one you want to use.

Start Button

Starts the currently selected animated wallpaper.

Stop Button

Stops the animated wallpaper.

Sound To Change

Lets you set whether you want the currently directory to be used for both startup & exit sounds or just startup sounds or just exit sounds.

License (Shareware Version)

This version of **GTI Desktop+** (the software) is released as Shareware. Graham Technology & Information, Ltd (GTI) hereby grants you a limited license to use the software for evaluation purposes for a period not to exceed thirty (30) days. If you intend to continue using this software (and/or it's documentation) after the thirty (30) day evaluation period, you **MUST** make a registration payment to GTI.

Using this software after the thirty (30) day evaluation period, without registering the software is a violation of the terms of this limited license.

You may not: rent, lease, modify, translate, disassemble, decompile, reverse engineer, or create derivative works based upon the Software.

All rights not expressly granted here are reserved to GTI .

See the help topic [How to Register](#) for more information.

Distribution

You are encouraged to pass a copy of the Shareware version of **GTI Desktop+** along to your friends and colleagues for evaluation. You may also upload copies of it to bulletin boards.

If you do so, you must include all the **GTI Desktop+** shareware files.

If you include **GTI Desktop+** as part of a commercially released Shareware Collection or as part of a Magazine or Book cover disk you must clearly state that a separator registration fee is payable to the Package Author (or their Agents) to continue using Shareware beyond the evaluation period.

License (Registered Version)

Grant of License. Graham Technology & Information, Ltd (GTI) hereby grants to you the right to use one (1) copy of the enclosed GTI program (the "Software") on a single computer. For purposes of this section, "use" means loading the Software into RAM, as well as installation on a hard disk or other storage device.

You may not: rent, lease, modify, translate, disassemble, decompile, reverse engineer, or create derivative works based upon the Software.

U.S. Government Information: Use, duplication, or disclosure by the U.S. Government of the computer software and documentation in this package shall be subject to the restricted rights applicable to commercial computer software as set forth in subdivision (b)(3)(ii) of the Rights in Technical Data and Computer Software clause at 252.227-7013 (DFARS 52.227-7013). The Contractor/manufacturer is Graham Technology & Information Ltd, 9/18 Mavisbank Gardens, Festival Park, Glasgow, G51 1HG, Scotland.

The licensed program is licensed, not sold. Nothing in this agreement shall be construed as conveying title in the licensed program to Licensee.

The Software, together with any archive copy thereof, shall be either returned to GTI or destroyed when no longer used in accordance with this Agreement, or when the right to use the Software is terminated.

All rights not expressly granted here are reserved to GTI .

If you wish to order additional copies please refer to the help topic [How to Register](#) for more information.

Distribution

You MUST NOT pass on to anyone copies of this version of **GTI Desktop+** or upload it to Bulletin Boards. This is a registered version, it is NOT SHAREWARE.

Whats New & Version History

New for Version 1.3

- Additional Screen Savers added
- Additional bitmaps added
- *Windows95 style* interface
- Code optimized to reduce size & improve performance
- Context sensitive help improved

Bugs fixed in Version 1.3

- Fixed screen saver idle timer not correctly recognising keystrokes in windows

Version 1.21

- Shareware Version time limited to 30 days
- Context sensitive help improved
- .ini file not updating properly bug corrected

Version 1.2

- Shareware Version time limited to 14 days
- Randomizer added to Screen Saver
- Support added for standard windows .SCR screen savers
- Fixed crash when bitmap directory not present bug
- Fixed Animated Wallpaper not clearing screen when stopped bug

Version 1.1 First version generally released

- Fixed screen saver stopping after few mins bug

Version 1.0 Initial Version, limited release

How to get Support

If you have any problems with **GTI Desktop+** please send an E-Mail message to support@gti.compulink.co.uk

Support is also available on CompuServe in the PikaPro forum and on [Bitnova](#) in the gti forum.

Please include a full description of the problem, the version of **GTI Desktop+** , the configuration of your PC and any other information you feel may be relevant to the problem.

Note Support is *ONLY* guaranteed for registered users. However we will attempt to provide support whenever possible for users of the Shareware version.

G.T.I. are members of the Association of Shareware Professionals (ASP). Therefore in the unlikely event that you are dissatisfied with the support you have received from G.T.I. you may lodge a formal complaint with the ASP. Please refer to the [ASP Ombudsman Statement](#) help topic for details of this procedure.

Random Selection

If you want a different screen saver to play each time, click on [this box](#).

U.K. (& All Other Countries)

To register **GTI Desktop+** complete the [registration form](#) and send £20* (sterling) or \$40* (US), per copy to

G.T.I., Ltd
9 / 18 Mavisbank Gardens
Festival Park
Glasgow
G51 1HG
Scotland

* Residents of the E.U. please also add VAT @ 17.5%

If you are paying by credit card you can e-mail the completed [registration form](#) to orders@gti.compulink.co.uk .

GTI can accept the following payment methods :-

Cash

Pounds Sterling or US Dollars

Cheque (Check)

Pounds Sterling or US Dollars

Credit Cards

Access, American Express, Eurocard, Mastercard & Visa

GTI are members of the Association of Shareware Professionals (ASP). Therefore in the unlikely event that you are dissatisfied with the service you have received from GTI you may lodge a formal complaint with the ASP. Please refer to the [ASP Ombudsman Statement](#) help topic for details of this procedure.

Northstar Solutions (U.S.A.)

Registering **GTI Desktop+** costs \$40 (US). To register **GTI Desktop+** call *Northstar Solutions* anytime between 10am to 10pm (EST) on

1-800-699 6395

1-803-699-6395 (Calls from outside USA)

or FAX the completed [registration form](#) to *Northstar Solutions* 24 hrs a day on

1-803-699-5465

or send the completed [registration form](#) along with a check or money order or your credit card details to

Northstar Solutions

P.O. Box 25262

Columbia,

SC 29224

or you could even send the completed [registration form](#) via e-mail to

America Online CompuServe Internet

STARMAIL 71561,2751 STARMAIL@AOL.COM

Whatever method you use to register please ensure you have the following information ready :-

Your mailing address, Disk size you want, Your Visa/MC card number & expiration date (if using credit card)

and of course state that you wish to register **GTI Desktop+** V1.3.

Note *Northstar Solutions* can not provide product/technical support for support please refer to the [How to get Support](#) help topic

U.S. Distributors

Northstar Solutions
Pik A Program

Pik A Program (U.S.A.)

Registering **GTI Desktop+** costs \$40 (US) per copy plus \$4 post and packing per order. To register **GTI Desktop+** call *Pik A Program* (7 days a week) on

1-800-TOREGISTER (867-3447)

(212) 598-4939 (Calls from outside USA)

or FAX the completed [registration form](#) to *Pik A Program* 24 hrs a day on

(212) 228 5879

or send the completed [registration form](#) along with a check or money order or you credit card details to

Pik A Program

13 Saint Marks Place

NY, NY 10003

or you could even send the completed [registration form](#) via e-mail to

CompuServe Internet

74777,3233 74777.3233@compuserve.com

(*Pik A Program* can accept Visa, Mastercard, Eurocard, American Express & Discover credit cards)

Whatever method you use to register please ensure you have the following information ready :-

Your mailing address, Disk size you want, Your credit card number & expiration date (if using credit card)

and of course state that you wish to register **GTI Desktop+** V1.3.

Note *Pik A Program* can not provide product/technical support, for support please refer to the [How to get Support](#) help topic

Pik A Program are members of the Association of Shareware Professionals (ASP). Therefore in the unlikely event that you are dissatisfied with the service you have received from *Pik A Program* you may lodge a formal complaint with the ASP. Please refer to the [ASP Ombudsman Statement](#) help topic for details of this procedure.

Where to find the latest Shareware Version

You will find the latest shareware version of **GTI Desktop+** in the following places.

Online Services

Bitnova (US based, with World Wide access via the Internet)

Compulink Information Exchange (CIX) (UK based, with World Wide access via the Internet)

CompuServe (World Wide)

Internet

FTP archives (World Wide)

WWW (World Wide)

BBS

Belgium Edge Of Delight

CIX

CIX is a UK based subscription conferencing system. You will find the latest version of **GTI Desktop+** in the *2newfiles* topic of the *filepool* conference.

CIXs phone number is 0181 296 1255 all speeds upto V.34 are supported.

Via the Internet telnet to cix.compulink.co.uk .

CompuServe

CompuServe is a world-wide subscription conferencing system. You will find the latest version of **GTI Desktop+** in the *pikapro* forum and library *S20* of the *winav* forum.

Internet FTP archives

You will find the latest version of [GTI Desktop+](#) on many FTP archives including Cica & Simtel mirror sites.

GTI Desktop+ V1.3 Registration Form (Pik-A-Program)

Name: _____

Address: _____

City: _____

Zip/Post Code: _____ State/Country: _____

E-Mail: _____

Please send me :-

| | (US) | Sub Total |
|--|---------|-----------|
| ____ Copies GTI Desktop+ (& +Pack 1) | \$40.00 | _____ |
| Shipping | \$4.00 | \$4.00 |

TAX (NYS residents only) ___ % _____

Total Enclosed is _____

I am paying by:

- CHECK VISACARD MASTERCARD AMERICAN EXPRESS
 CASH (by registered mail only, please) DISCOVER CARD

Card Number ____ - ____ - ____ - ____ Exp. date ____ - ____

(Signature) (Date)

Make checks payable to: **Pik A Program**

Where did you hear about GTI Desktop+ ?

Comments: _____

Send your completed order to: **Pik A Program**

13 Saint Marks Place

NY, NY 10003

GTI Desktop+ V1.3 Registration Form (Northstar)

Name: _____

Address: _____

City: _____

Zip/Post Code: _____ State/Country: _____

E-Mail: _____

Please send me :-

| | (US) | Sub Total |
|--|---------|-----------|
| _____ Copies GTI Desktop+ (& +Pack 1) | \$40.00 | _____ |

Total Enclosed is _____

I am paying by:

CHECK VISACARD MASTERCARD CASH (by registered mail only, please)

Card Number ____ - ____ - ____ - ____ Exp. date ____ - ____

(Signature) (Date)

Make checks payable to: **Northstar Solutions**

Where did you hear about GTI Desktop+ ?

Comments: _____

Send your completed order to: **Northstar Solutions**

P.O. Box 25262
Columbia,
SC 29224

Internet WWW

You will find the latest version of **GTI Desktop+** on GTI's home page. The address of GTI's home page is
<http://www.compulink.co.uk/~gti/>



Ombudsman Statement

G.T.I. and Pik a Program are members of the Association of Shareware Professionals (ASP). The ASP wants to make sure that the Shareware principle works for you. If you are unable to resolve a Shareware-related problem with an ASP member by contacting the member directly, ASP may be able to help.

The ASP Ombudsman can help you resolve a dispute or problem with an ASP member, but does not provide technical support for members' products. Please write to the ASP Ombudsman at

**545 Grover Road,
Muskegon,
MI 49442-9427,
USA**

or FAX the ASP Ombudsman

616-788-2765

or send a CompuServe message via CompuServe Mail to the ASP Ombudsman

70007,3536

or send an e-mail via the Internet to the ASP Ombudsman

70007.3536@compuserve.com

Removing GTI Desktop+

To remove **GTI Desktop+** from your system delete the contents of the directory where you installed **GTI Desktop+** (if you selected the default directory during install the directory is `c:\gtidesk`) and the `gtidesk.ini` file from your windows directory.

Deutschland

Bestellservice in Deutschland:

per BRIEFPOST an: Vogel Datentechnik
Edition Zensor
Masurenweg 1
D-85521 Ottobrunn

per E_MAIL an: CompuServe-Adresse: 100346,2206
Internet-Adresse : 100346.2206@compuserve.com

im WORLD WIDE WEB: <http://www-city.europeonline.com/cyberhome/vogeldat/order>

per TELEFAX an : +49 (0)89 60 92 184

Bitte unbedingt E-Mail-Adresse angeben, falls vorhanden!

Der Preis für **GTI Desktop+** beträgt DM 58,00 (*einschließlich Versand und Mehrwertsteuer*)

Bitnova

Bitnova is a US based conferencing system. Bitnova also offers world wide access via the Internet.

You can access Bitnova via one of the following means

Phone : (510) 581-0600

Telnet : bitnova.com

Web : www.bitnova.com

FTP : ftp.bitnova.com

G.T.I. maintains a support & a file area on Bitnova, type **go gti** at any prompt to switch to the G.T.I. area.

Edge of Delight BBS

Edge Of Delight DiSTSiTE Officiel For GTI's software

Nodes : 1) +32-2-375.5651 Boca 28.8K 2:293/735
2) +32-2-375.8923 ZyXel 19.2K

Email: pascal.vandersteegen@infoboard.be

Hobby_Soft: 32:400/2

Dgl : 68:320/5

fidonet.org: 2:291/735

