

# Contents

## Getting Started With ConfigSafe

[Introducing ConfigSafe](#)

[Uses for ConfigSafe](#)

## Viewing Configuration Changes

[ConfigSafe Icons](#)

[Viewing File Changes](#)

[Viewing System Information Changes](#)

[Viewing Drive Information Changes](#)

[Viewing Directory Changes](#)

[Viewing Registry Changes](#)

## Creating System Snapshots

[Creating System Snapshots](#)

[Managing System Snapshots](#)

[Scheduling Automatic Snapshots](#)

[Specifying the Maximum System Snapshots](#)

## Generating Reports

[Generate Report Window](#)

[Printing a Report](#)

[Viewing a Report Online](#)

## Restoring System Configurations

[Overview](#)

[Undo the Configuration Restoration](#)

# Introducing ConfigSafe

ConfigSafe identifies the changes users and installation programs make to system configurations and determines when those changes occurred. ConfigSafe does this by making a backup copy of the configuration information. This backup copy is called a *snapshot*. A snapshot contains information about the your system configuration, drives (including network drive connections), and copies of important configuration files.

ConfigSafe uses the snapshots to:

- Identify changes users make to their configuration
- Restore the system to a working configuration

ConfigSafe keeps track of your configuration changes by making a backup copy, or snapshot, of your system configuration information.

ConfigSafe lets you capture a snapshot of your system configuration at any time. You can also have ConfigSafe automatically capture a configuration snapshot at scheduled intervals. This snapshot can be used as a starting point when examining changes to the system. The snapshot can also be used to restore the system configuration to the state that it was in when the snapshot was captured.

# Uses for ConfigSafe

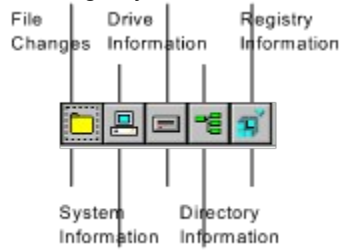
You can perform the following tasks with ConfigSafe:

- Identify the changes a user made to their system configuration.
- Identify the cause of a problem by showing configuration changes
- Restore system to a working configuration
- Switch between configurations

# ConfigSafe Icons

The following icons are accessible from the ConfigSafe main window. Each icon represents a major piece of system information tracked by ConfigSafe.

The Registry Information icon is only available from the ConfigSafe 95 version of the software.



# Viewing File Changes

The [File Changes window](#) displays changes made to configuration files on your system. The information displayed represents changes made to those files between the dates specified in the Changes Starting and Changes Ending fields.

This window is the first window to display when you invoke the ConfigSafe software. You can return to this window from other ConfigSafe windows by clicking the File Changes icon in the icon section of the window.

While viewing the File Changes window, you have the following options:

Option	Description
Show Line Numbers	Show the line numbers for the file. This option is not available when viewing initialization (.INI) files.
Show Only Changed Lines	Show only the lines that have changed.

You specify how you want to view the information by clicking in the box next to the option desired. A checkmark in the box indicates that the option is selected.

Show Line Numbers       Show Only Changed Lines

When viewing changes in initialization (.INI) files, the information is displayed according to sections. The changes are listed by section names.

## To View File Changes:

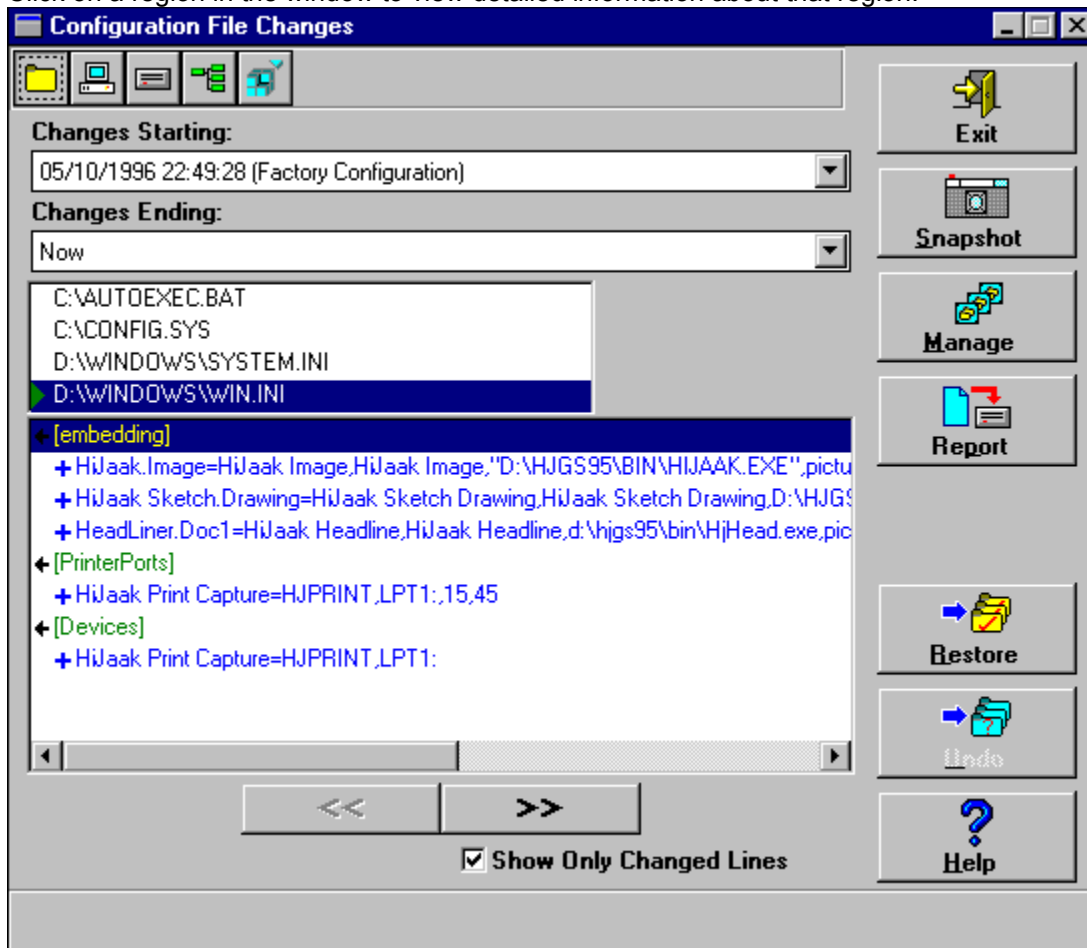
1. Click the File Changes icon.  
The File Changes window displays.
2. Select the File Group that contains the file for which you would like to view the changes from the drop-down list in the File Groups: field.
3. Select the file for which you want to view changes.
4. To view only changed lines, click in the box next to the Show only changed lines option.  
Notice that if you double-click on the file name, NotePad is invoked displaying the contents of the file.
5. Click the Exit button when finished.

## Related Topics:

[File Changes Window](#)

## File Changes Window

Click on a region in the window to view detailed information about that region.



### Related Topics:

[Exit Button](#)

[Snapshot Button](#)

[Manage Button](#)

[Report Button](#)

[Restore Button](#)

[Undo Button](#)

[Help Button](#)

[Changes Starting](#)

[Changes Ending](#)

[Options](#)

[List of Files](#)

[File Changes](#)

[View Previous Section/View Next Section](#)



***Exit Button***

Click here to exit the ConfigSafe software.



## ***Snapshot Button***

Click here to create a configuration snapshot. You can name the snapshot and select the files to be included in the snapshot.

## ***Manage Button***

Click here to manage snapshot information. You can rename or delete a snapshot, schedule automatic snapshots, and specify the maximum number of snapshots you want on your system.

## ***Report Button***

Click here to generate a report. You can select the information you want to be included in the report and also select whether you want to print the report or view it online.

## ***Restore Button***

Click here to select the configuration to be restored. You can select the files to be included in the restoration.

When restoring the configuration, you need to specify if you want to restart Windows or reboot your system once the files are restored. If you do not specify this option and proceed with the restoration, the files will be restored, but the restored configuration will not be in effect.

### ***Undo Button***

Click here to undo an earlier configuration restoration and return the files to their original state. You can select the files to return to their original state. You select the files in the Undo window.

## ***Help Button***

Provides context-sensitive online help.

### ***Changes Starting***

Select the start date from the drop-down list for the monitored information.

### ***Changes Ending***

Select the end date from the drop-down list for the monitored information.



## ***Options***

While viewing the File Information window, you can select to view changes to the files by viewing only the lines that have changed. You specify how you want to view the information by clicking in the box next to the option desired. A checkmark in the box indicates that the option is selected.

**Show Line Numbers**       **Show Only Changed Lines**

When viewing changes in initialization (.INI) files, the information is displayed by sections. The sections that contain changes are expanded to show the changes made.

## ***List of Files***

Displays the files that are being monitored by ConfigSafe.

## ***File Changes***

The File Changes field identifies the actual changes made to the file. This field uses the following conventions:

<b>Convention</b>	<b>Description</b>
Red font (-)	Indicates the line was deleted. A minus sign (-) precedes deleted lines.
Blue font (+)	Indicates the line was changed. A plus sign (+) precedes changed lines.
Green font	Indicates the line was added. An arrow also precedes new lines.


## ***View Previous Section/View Next Section***

Click on these buttons to move to the previous or next change.

# Viewing System Information Changes

The System Information window displays the changes made to the system within the specified time.

## To View System Changes:

1. Click the System Information icon .

The System Information window displays.

2. View the changes.

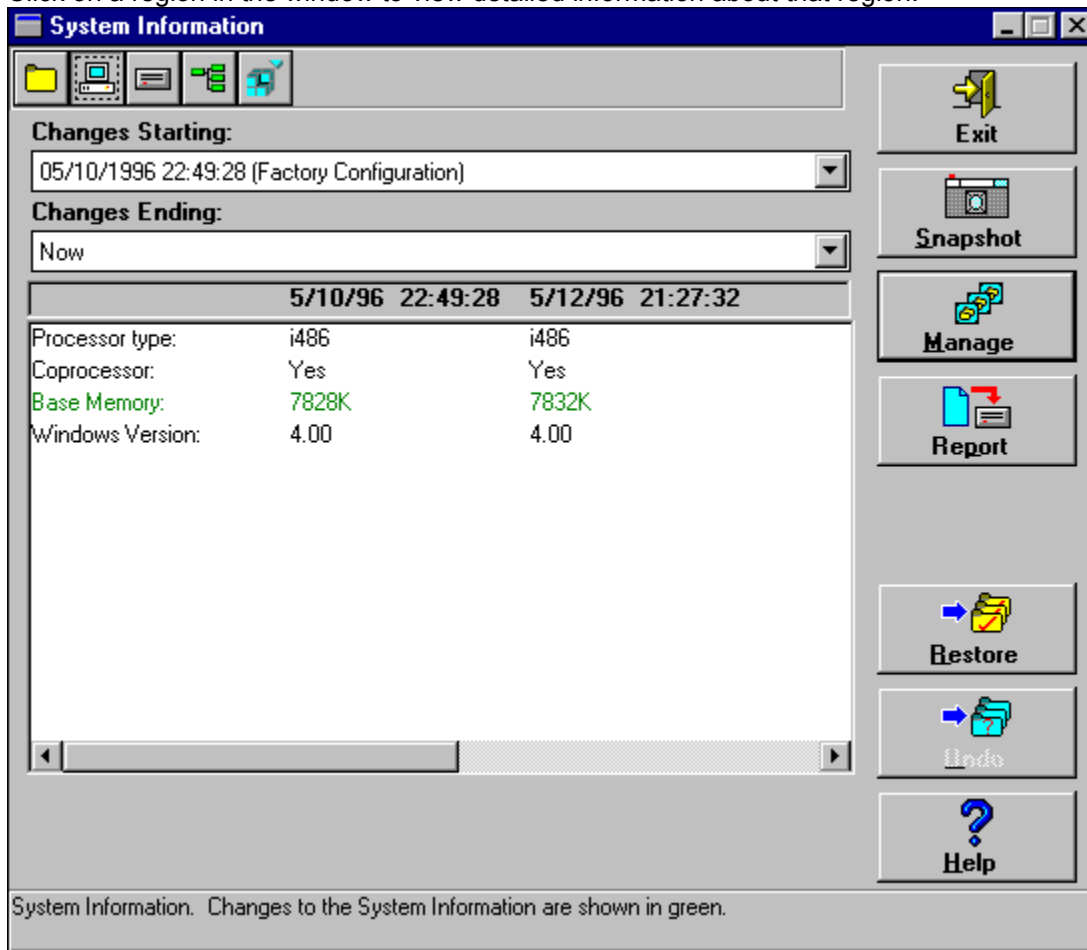
Any changes made to the system information are displayed in green on the System Information window.

## Related Topics:

System Information Window

## System Information Window

Click on a region in the window to view detailed information about that region.



The screenshot shows the Windows System Information window. The title bar reads "System Information". Below the title bar is a toolbar with icons for File, System, Report, and Help. The main area is divided into sections: "Changes Starting:" with a dropdown menu showing "05/10/1996 22:49:28 (Factory Configuration)", and "Changes Ending:" with a dropdown menu showing "Now". Below these is a table comparing system information at two different times. The table has columns for the date and time of the snapshots and the system information itself. The information for the second snapshot is highlighted in green. To the right of the main area is a vertical toolbar with buttons for Exit, Snapshot, Manage, Report, Restore, Undo, and Help. At the bottom of the window, a status bar reads "System Information. Changes to the System Information are shown in green."

	5/10/96 22:49:28	5/12/96 21:27:32
Processor type:	i486	i486
Coprocessor:	Yes	Yes
Base Memory:	7828K	7832K
Windows Version:	4.00	4.00

### Related Topics:

[Information Displayed - System Information Window](#)

### ***Information Displayed - System Information Window***

Any changes made to the basic system configuration are displayed in green on the System Information window. This window lists information such as:

- Processor type
- Coprocessor
- Base memory
- Windows version


The following fields are displayed only in the 16-bit version of ConfigSafe - but are not available in the ConfigSafe 95 version of the software.

- Extended memory
- DOS version
- SmartDrive version
- DoubleSpace version

# Viewing Drive Information Changes

The [Drive Information window](#) displays the changes made to the drive between the specified time period.

## To View Drive Information Changes:

1. Click the Drive Information icon .

The [Drive Information window](#) displays.

2. View the changes.

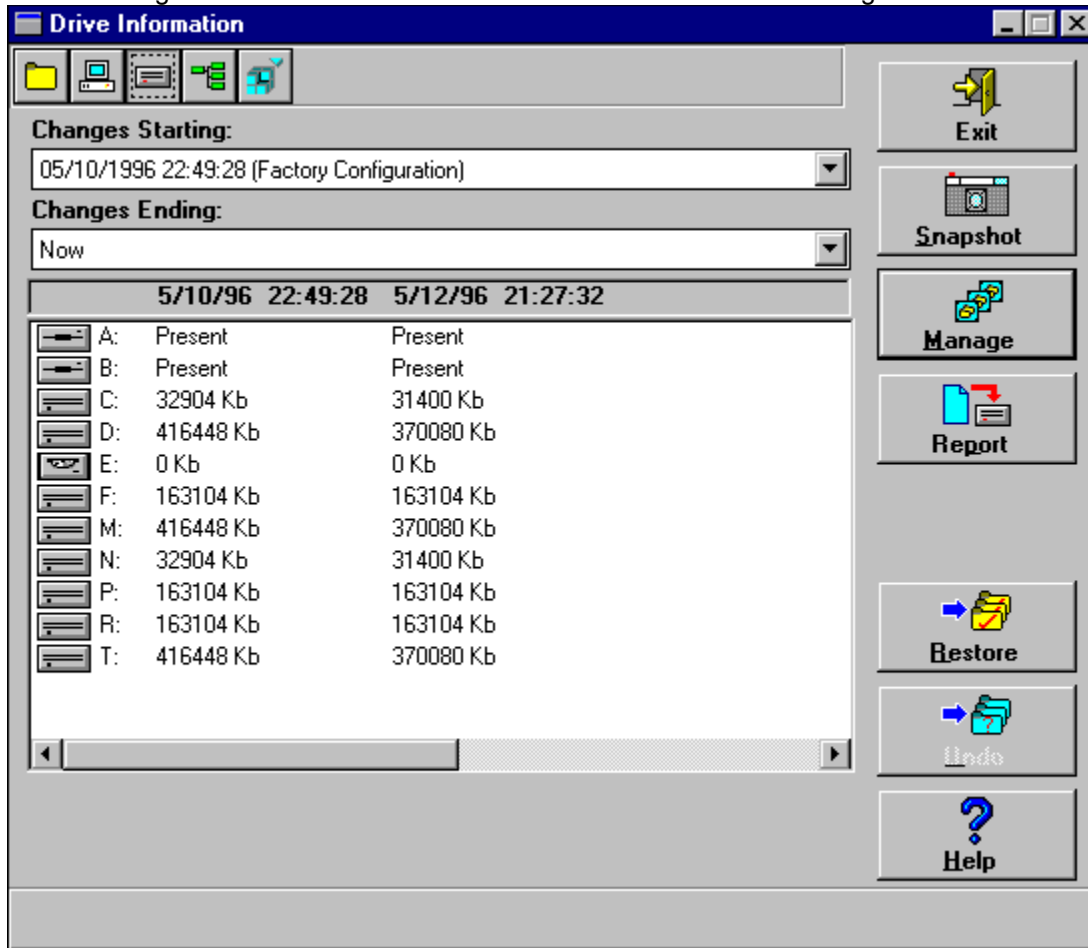
Any changes to drives are shown in green.

## Related Topics:

[Drive Information Window](#)

## Drive Information Window

Click on a region in the window to view detailed information about that region.



The screenshot shows the 'Drive Information' window with a toolbar at the top containing icons for file operations. Below the toolbar, there are two dropdown menus: 'Changes Starting:' set to '05/10/1996 22:49:28 (Factory Configuration)' and 'Changes Ending:' set to 'Now'. A table displays drive information for two dates: 5/10/96 and 5/12/96. The table includes columns for drive letter, status, and size in Kb. To the right of the table is a vertical toolbar with buttons for 'Exit', 'Snapshot', 'Manage', 'Report', 'Restore', 'Undo', and 'Help'.

	5/10/96	22:49:28	5/12/96	21:27:32
A:	Present		Present	
B:	Present		Present	
C:	32904 Kb		31400 Kb	
D:	416448 Kb		370080 Kb	
E:	0 Kb		0 Kb	
F:	163104 Kb		163104 Kb	
M:	416448 Kb		370080 Kb	
N:	32904 Kb		31400 Kb	
P:	163104 Kb		163104 Kb	
R:	163104 Kb		163104 Kb	
T:	416448 Kb		370080 Kb	

### Related Topics:

[Information Displayed - Drive Information Window](#)




### ***Information Displayed - Drive Information Window***

The Drive Information window displays the information for each drive installed on your system. Drives that are no longer configured are shown in red. New drives that have been added are shown in blue.

# Viewing Directory Changes

The Directory Information window displays the changes made to files in the directory between the specified time period.

## To View Directory Changes:

1. Click the Directory information icon .

The Directory Information window displays.

2. Select the directory you wish to analyze.

ConfigSafe monitors specific directories on your system, such as the Windows and DOS directories. The list of directories monitored by ConfigSafe are listed in the upper Window of the main screen. Changes to files in those directories are listed in the Changes box, the lower window of the main screen.

3. View the changes.

Any changes to files in the directories are displayed. Files which have been updated are displayed in green, files which have been added are displayed in blue, and files which have been deleted are in red.

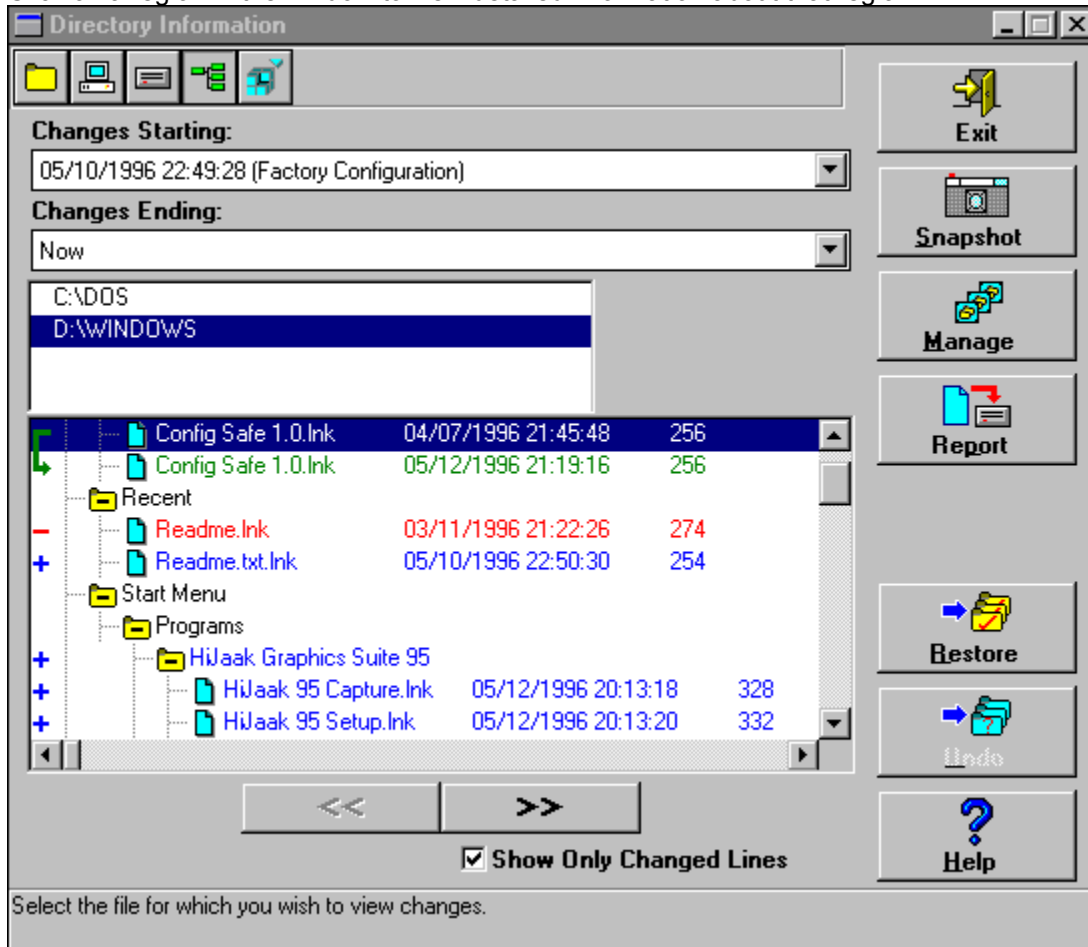
## Related Topics:

[Directory Information Window](#)

## Directory Information Window

The Directory Information displays the information for each directory, and the files included in that directory. Double click on any directory name and the files in the directory are displayed.

Click on a region in the window to view detailed information about that region.



### Related Topics:

[List of Directories](#)

[File Changes](#)

[Changed Lines Only](#)

[View Previous Section/View Next Section](#)

## ***List of Directories***

Displays the directories which are being monitored by ConfigSafe.

## ***File Changes***

The File Changes field identifies the actual changes made to files in the selected directory. This field uses the following conventions:

<b>Convention</b>	<b>Description</b>
Red font (-)	Indicates the file was deleted. A minus sign (-) precedes the deleted file.
Blue font (+)	Indicates the file was added. A plus sign (+) precedes new files.
Green font	Indicates the file has changed - the date, time, or size is no longer the same. A green arrow appears before the files which were changed.

## ***Changed Lines Only***

While viewing the File Changes field you have the option of having ConfigSafe show all files in a directory, or just those which have been changed. If the Changed Lines Only field is marked, only those files which have been added, deleted, or updated in the specified time period, will be displayed.


***View Previous Section/View Next Section***

Click on these buttons to move to the previous or next file which has been changed in the directory.

# Viewing Registry Changes

The Registry Information window displays the changes made to the Windows Registry between the specified time period. This feature, available only in ConfigSafe 95, helps track any changes to the system registry by Windows itself, or an application.

## To View Registry Changes:

1. Click the Registry information icon .

The Registry Information window displays. The upper box contains a list of Registry Keys which are being monitored by ConfigSafe. The lower window displays the actual changes to those registry keys.

2. Select the key you wish to analyze.

After you select the key you want to analyze, any changes made to registry entries in that key, or its subkeys, display in the lower window.

3. View the changes.

Any changes to registry keys or their values are displayed. Values which have been changed are displayed in green. New values and keys are displayed in blue. Deleted keys and values are displayed in red.

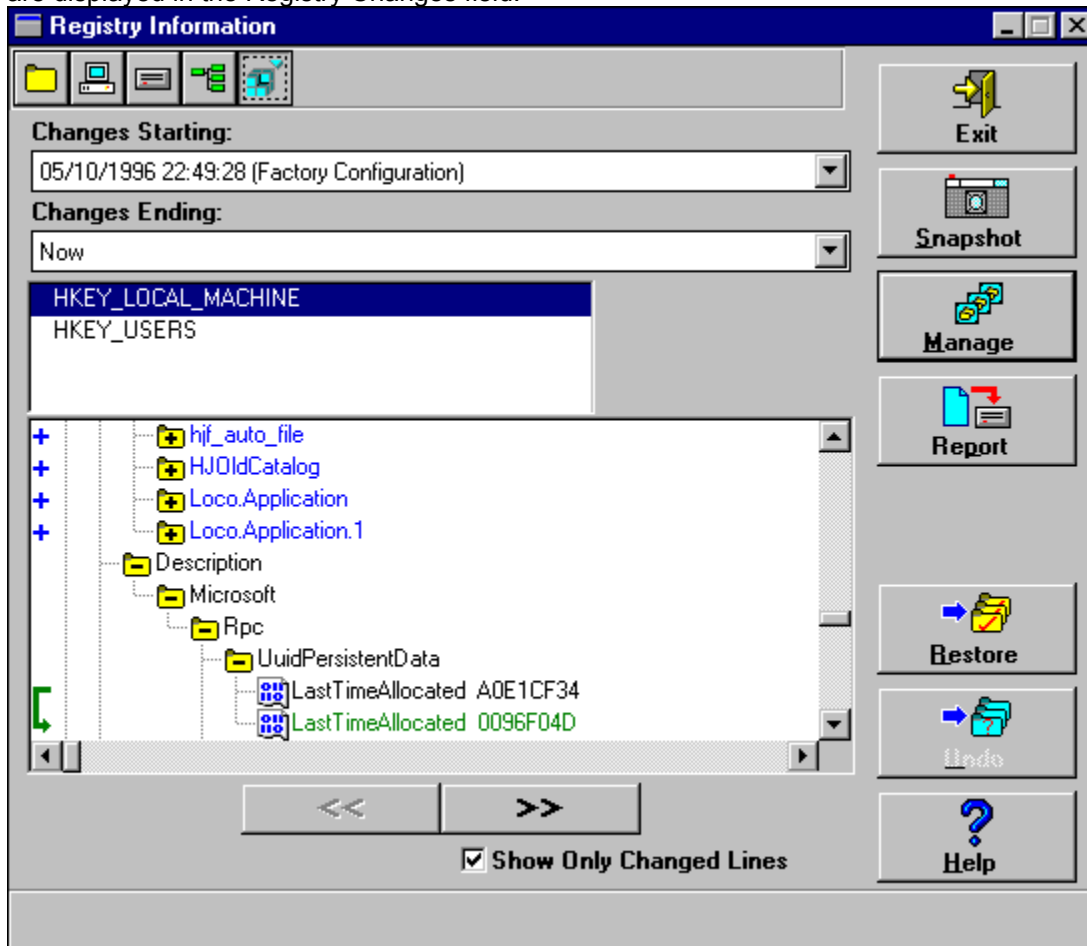
## Related Topics:

[Registry Information Window](#)

## Registry Information Window

Click on a region in the window to view detailed information about that region.

The Registry Information window has two main fields, the Registry Key List field, and the Registry Changes field. Select the key in the Registry Key List, and changes to that Registry Key, or its subkeys, are displayed in the Registry Changes field.



### Related Topics:

[Registry Key List](#)

[Registry Changes](#)

[Changed Lines Only](#)

[View Previous Section/View Next Section](#)



## ***Registry Key List***

Displays the Registry keys that ConfigSafe monitors.

## ***Registry Changes***

The Registry Changes field identifies the changes to the selected Registry key and its subkeys. This field uses the following conventions:

<b>Convention</b>	<b>Description</b>
Red font (-)	Indicates the Registry Key or Value was deleted. A minus sign (-) precedes the deleted registry key or value. This indicates the specified value or key is not contained in the later snapshot, but was in the earlier snapshot to which it is compared.
Blue font (+)	Indicates the Registry Key or Value was added. A plus sign (+) precedes the new entry.
Green font (green arrow)	Indicates the Registry Key or Value has changed. The old and new values for the Registry Key or Value display. A green arrow precedes the changed lines..

## ***Changed Lines Only***

While viewing the Registry Changes field you have the option of having ConfigSafe show all the Registry keys and values, or just those which have been changed. If the Changed Lines Only field is marked, only those keys or values which have been added, deleted, or updated in the specified time period, will be displayed.

***View Previous Section/View Next Section***

Click on these buttons to move to the previous or next Registry key or value which has changed.

# Creating System Snapshots

A system snapshot captures the configuration of your system at a specific moment. Your configuration information includes system files, and hardware configuration, file versions, network connections, and registry information. (Note that registry information is available only in the ConfigSafe 95 software version.)

You create system snapshots using the Create System Snapshot window.

## To Create a System Snapshot:

1. Click the Snapshot button.



The Create System Snapshot window displays.

2. Enter a descriptive name for the snapshot. The snapshot includes information for the files, registry, software, hardware, and network connection changes.

It is also a good idea to add a descriptive title that specifies the contents of the snapshot. For example, a descriptive title you might enter could be "Before Word for Windows Was Installed" meaning that you created the snapshot before you installed Word for Windows on your system.

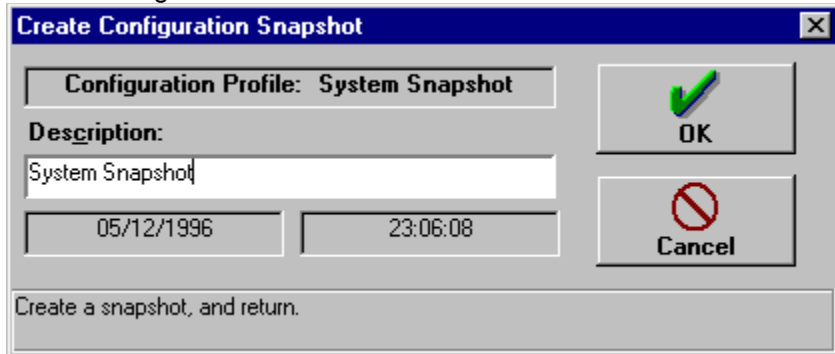
3. Click the OK button to create the snapshot.

## Related Topics:

[Create System Snapshot Window](#)

## Create System Snapshot Window

Click on a region in the window to view detailed information about that region.



### Related Topics:

[Description Field](#)

[OK Button](#)

[Cancel Button](#)

### ***Description Field***

Indicates the description which will be assigned to the system snapshot. When ConfigSafe snapshots your system, it keeps a record of the configuration files, system hardware, network connections, file versions, and Registry information. The description field allows you to assign a descriptive name to the system snapshot, such as: "Before Installing Word for Windows." Later, when referring to the snapshot, you will have an indication of why the system snapshot was taken.

## ***OK Button***

Click here to perform the task and return to the previous window.

### ***Cancel Button***

Click here to exit this window without saving any of the changes made.



# Managing System Snapshots

Once you create the system snapshot, you may want to delete the snapshot or rename it. You can manage the system snapshots from the [Manage Configuration Snapshots window](#).

## Related Topics:

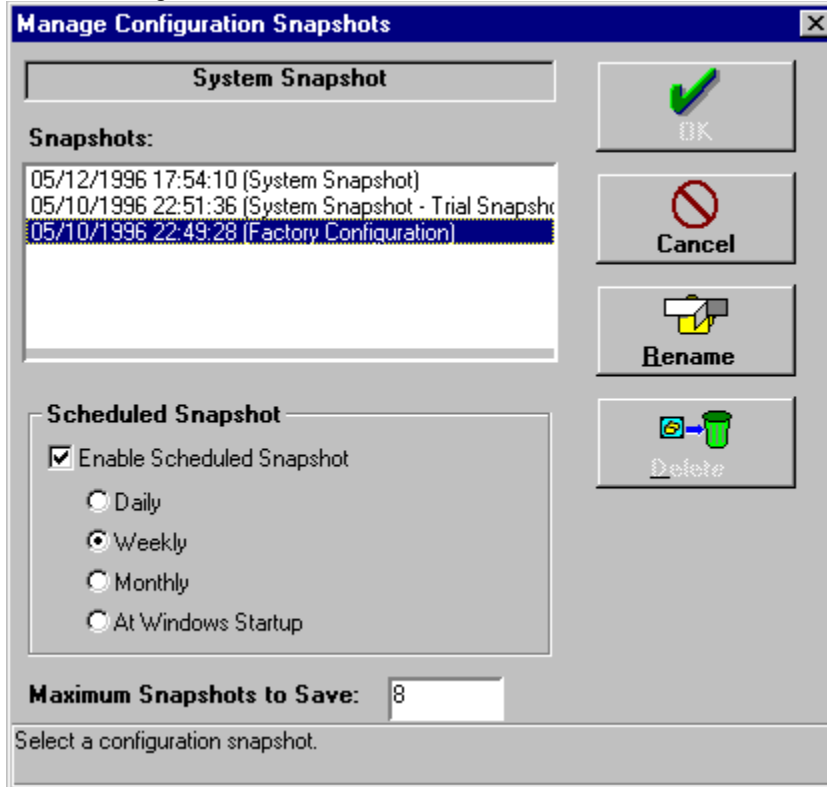
[Manage Configuration Snapshots Window](#)

[Renaming a Snapshot](#)

[Deleting a Snapshot](#)

## Manage Configuration Snapshots Window

Click on a region in the window to view detailed information about that region.



NOTE: Some of the fields displayed here may not be available in your version of ConfigSafe. ConfigSafe is customized by each vendor to their particular requirements – enabling and disabling certain fields. If you need the advanced features provide by these fields, you must upgrade to the retail version of ConfigSafe. Contact your reseller for more information.

### **Related Topics:**

[Rename Button](#)

[Delete Button](#)

[Snapshots](#)

[Scheduled Snapshots](#)

[Maximum Snapshots to Save](#)

### ***Rename Button***

Click here to enter a different name for the selected configuration snapshot.

### ***Delete Button***

Click here to delete the selected configuration snapshot. The original system snapshot may not be deleted – it is protected by ConfigSafe.

## ***Snapshots***

Identifies a list of system snapshots currently retained by ConfigSafe. To rename or delete a snapshot from the recorded history, first select a configuration snapshot from this list. Then, select the desired action.

## ***Scheduled Snapshots***

When working with snapshots, you can perform the following functions:

- Enable scheduled snapshots
- Schedule automatic snapshot intervals

### ***Enable Scheduled Snapshots***

You can schedule snapshots so that they occur automatically. Your choices are to capture the information:

### ***Automatic Snapshot Intervals***

You can schedule snapshots to occur at the following intervals:

<b>Button</b>	<b>Description</b>
Daily	Capture the information once a day.
Weekly	Capture the information once a week.
Monthly	Capture the information once a month.
At Windows Startup	Capture the information when Windows is invoked.

### ***Maximum Snapshots to Save***

In this field, you can specify the maximum snapshots to retain on your system.

For example, if you specify that you want to create a snapshot daily, and you specify that you want to retain only 7 snapshot files on your system, ConfigSafe will delete the least recent file when the 8th snapshot is taken.

## Renaming a Snapshot

You can rename a snapshot should you desire to change the information in the title. For example, you could alter the title to include the date if you did not initially include that information. Or you can enter a more descriptive file name if you choose.

### To Rename a Snapshot:

1. Click the Manage button.



The Manage Configuration Snapshot window displays.

2. Click on the name of the snapshot that you want to rename.
3. Click the Rename button.

The Snapshot Description dialog box displays.

4. Enter the new name of the snapshot.
5. Click the OK button.

The Manage Configuration Snapshots window displays with the newly named snapshot.

## Deleting a Snapshot

You can delete a snapshot when the information contained within the snapshot is no longer of importance.

### To Delete a Snapshot:

1. Click the Manage button.



The Manage Configuration Snapshot window displays.

2. Click on the name of the snapshot that you want to delete.
3. Click the Delete button.
4. Confirm that this is the file you want to delete when prompted.

The Manage Configuration Snapshot window displays with the selected file deleted from the list of files.

5. Click the OK button.



# Scheduling Automatic Snapshots

You can schedule snapshots so that they occur automatically.

Note: This feature may not be enabled by your vendor. If you wish to schedule automatic snapshots, you must purchase the retail version of ConfigSafe from your reseller.

Your choices are to capture the information:

Button	Description
Daily	Capture the information once a day.
Weekly	Capture the information once a week.
Monthly	Capture the information once a month.
At Windows Startup	Capture the information when Windows is invoked.

## To Schedule Automatic Snapshots

1. Click the Manage button from any ConfigSafe window.



The Manage Configuration Snapshot window displays.

2. Click in the check box next to the Enabled Scheduled Snapshot option.  
A checkmark indicates that the option is enabled.
3. Select the button next to the time interval that specifies when you would like snapshots to be created.
4. Click the OK button.

# Specifying the Maximum System Snapshots

You can specify how many snapshot files you would like to keep on your system. ConfigSafe will delete the files once you exceed the specified number.

For example, if you specify that you want to create a snapshot daily, and you specify that you want to retain only seven snapshot files on your system, ConfigSafe will delete the least recent file when the eighth snapshot is taken.

You specify the maximum snapshots to save from the Manage Configuration Snapshots window in the following field:



Keep in mind that each system snapshot on a Windows 3.1x system uses approximately 1Kb of disk space, on a Windows 95 system it uses approximately 320Kb. You can therefore limit your snapshots by the amount of disk space you wish to provide.

## To Specify the Maximum Snapshots to Save:

1. Click the Manage button.



The Manage Configuration Snapshot window displays.

2. Enter the maximum number of snapshot files you want to keep on your system.
3. Click the OK button.

You can generate reports that list configuration changes from the dates specified in the Changes Starting and Changes Ending fields. You have the option of including the following information in the report:

- File change information
- System information
- Drive information
- Directory information
- Registry information (available only in the ConfigSafe 95 version)

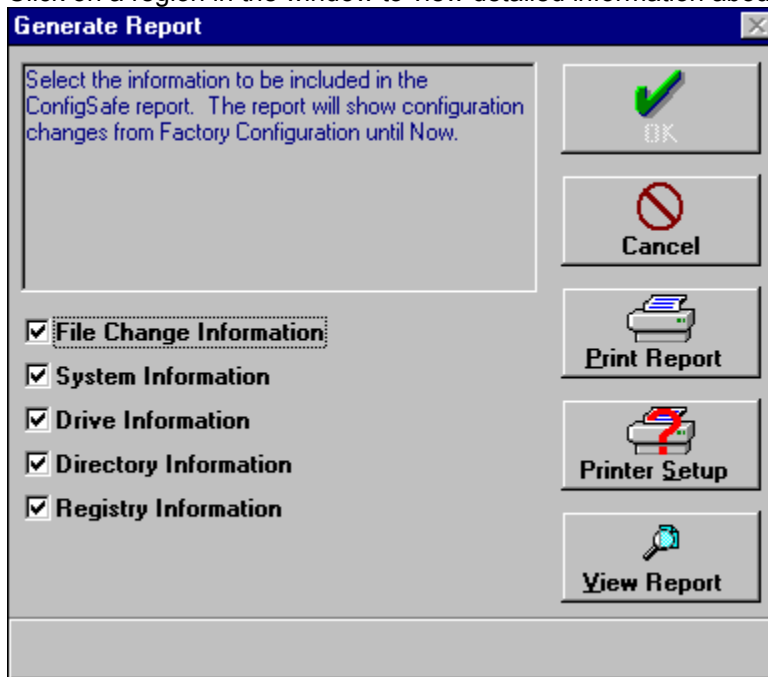
You select the information to be included in the report from the Generate Report Window.

When you create a report, you have the following options:

- Send the output to a printer
- View the report online

## Generate Report Window

Click on a region in the window to view detailed information about that region.



### Related Topics:

[Print Report](#)

[Printer Setup](#)

[View Report](#)

[Report Information](#)

***Print Report***

Click here to print the report listing the changes to the configuration.

## ***Printer Setup***

Click here to set the printing options of your printer to which you will send the report.

## ***View Report***

View the report of the changes to the configuration online.

## ***Report Information***

Click in the box next to the option to select the information to be included in the report. A checkmark in the box indicates that this information is to be included.

- File Change Information**
- System Information**
- Drive Information**
- Directory Information**
- Registry Information**

# Printing a Report

You can print the report once you specify the options that the report is to include. \*

## To Print a Report:

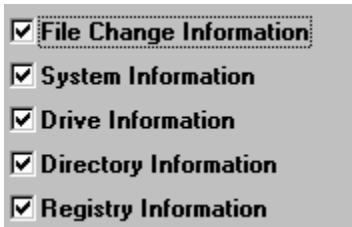
1. Click the Report button.



The Generate Report window displays.

2. Select the information that the report is to contain.

Click in the box next to the option to select the option. A checkmark in the box indicates that this information is to be included.



3. If you have not already done so, set up the printer information. If the printer information is correct, proceed to step 4.

A. Click the Printer Setup button.



A standard print setup dialog box displays.

B. Select the appropriate printing options.

C. Click the OK button.

4. Click the Print Report button.



The report is generated and printed on the printer specified in the printer setup information.

5. Click the OK button when finished.



## Viewing a Report Online

Rather than sending the output to a printer, you can view the information online. When you view a report online, Notepad is invoked and will display the report. You can then cut and paste information from Notepad or edit the report before you print it.

### To View a Report Online:

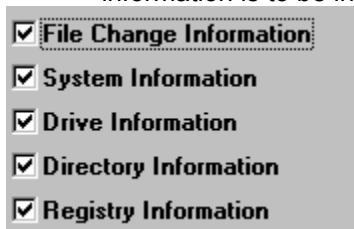
1. Click the Report button.



The Generate Report window displays.

2. Select the information that the report is to contain.

Click in the box next to the option to select the option. A checkmark in the box indicates that this information is to be included.



3. Click the View Report button.



The report displays online.

4. Select Close from the File pull-down menu when you have finished viewing the report.
5. Click the OK button.

# Overview

One of the most powerful features of ConfigSafe is the ability to restore your system to a previous configuration in just seconds. For example, perhaps you suddenly begin having problems trying to print a document. You know the system printed without a problem just last Wednesday. Now, you can restore your system to that previously working configuration in just seconds.

Simply run ConfigSafe and from the Restore Configuration window, you can select the previous configuration to be restored. If you deselect a file from the list of files, it will not be restored. Select the Restore button from any of the ConfigSafe windows. You will see the [Restore Configuration window](#).

When restoring the configuration, you need to specify if you want to restart Windows or reboot your system once the files and Registry are restored. If you do not specify this option and proceed with the restoration, the files will be restored, but the restored configuration will not be in effect.

Note: In ConfigSafe 95, if you choose to restore the Registry, the only option is to reboot your system.

## To Restore a Configuration from Windows:

1. Click the Restore button.



You will see the [Restore Configuration window](#).

2. Select the configuration to be restored from the drop-down list.



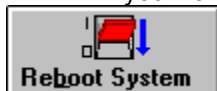
The files associated with this configuration are listed in the file list. Verify the files you wish to have restored are selected. ConfigSafe 95 users should also verify the Restore Registry Information option is selected if they wish to restore the total system configuration.

3. Click on the file names to be included in the restoration and select the Restore button.  
ConfigSafe will verify you wish to restore your system.
4. Select the action ConfigSafe should take after restoring your system.

If you want Windows to be started after the restoration, click on the Restart Windows button.



If you want to reboot the system after the restoration, click on the Reboot System button.



Otherwise, select the Continue button and ConfigSafe will restore your system, and then return to Windows.

Note: ConfigSafe 95 requires that you reboot your system after restoring the system Registry.

## To Restore a Configuration from DOS:

1. From the CFGSAFE or CSAFE95 directory, run the SOS utility.  
You will see the ConfigSafe S.O.S Utility Main Screen.
2. Select the configuration to be restored from the drop-down list.



The SOS utility is used specifically designed for helping you when your system won't run Windows or Windows 95. SOS restores all of the configuration files and registry entries of any previous configuration.

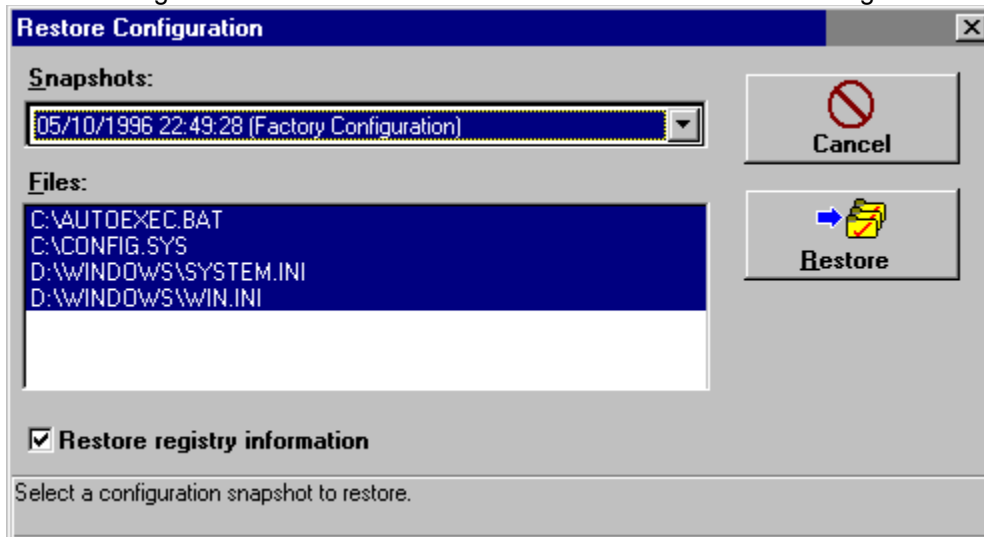
3. Select the Restore Button.
4. Upon restoring your configuration files, the ConfigSafe SOS utility will reboot your system.

### **Related Topics:**

[Restore Configuration Window](#)

## Restore Configuration Window

Click on a region in the window to view detailed information about that region.



### Related Topics:

[Restart Windows Button](#)

[Reboot System Button](#)

[List of Files](#)

[Restore Registry Information](#)

### ***Restart Windows Button***

Click here to restart Windows once the configuration is restored.

## ***Reboot System Button***

Click here to reboot your system once the configuration is restored.

### ***List of Files***

The list of files which ConfigSafe has available for restoration. By default, all files are highlighted. Those highlighted will be restored upon selecting O.K. or one of the other restoration options. Verify the files you wish to restore are highlighted, and select the restore option.

### ***Restore Registry Information***

Click here if ConfigSafe is to restore the system Registry. On Windows 95 systems, it is recommended that the Registry be restored along with the system files for a total system restoration.



# Undo the Configuration Restoration

If you restore your system using ConfigSafe, and your system is no better than before, don't panic. Use the UNDO feature, from Windows or DOS, to return back to the system configuration before you attempted your last restore. Keep in mind, ConfigSafe can only UNDO a single level of restores.

The Undo feature allows you to undo an earlier configuration restoration and return the files to their original state. You can select the files to return to their original state. You select the files in the Undo window.

## To Undo the Configuration Restoration:

1. Click the Undo button.



You will see the [Undo window](#).

2. Select the configuration restoration to be undone from the drop-down list.



The files associated with this configuration are listed in the file list. The default is that all of the files are selected

3. Click on the file names to deselect those that you do not want to be returned to their original state.
4. If you want Windows to be started after the restore is undone, click on the Restart Windows button.



If you want to reboot the system after the restore is undone, click on the Reboot System button.



5. Click the OK button to undo the restoration.

## Related Topics:

[Undo Window](#)

## Undo Window

Click on a region in the window to view detailed information about that region.

