

museArc 4.6

MPEG Audio Player

© 1996,1997 codeArts GdbR

Online user manual

Table of Content

[About museArc](#)

[MPEG Audio](#)

[New Features of museArc](#)

[Installation](#)

[museArc as WWW-Browser Helper Application](#)

[First Start of museArc](#)

[museArc Controls](#)

[Common dialog usage](#)

[Tool Tips](#)

[Context Help](#)

[Main Dialog](#)

[Controls](#)

[Drag and Drop](#)

[Resizing and hiding the dialog](#)

[Accelerator keys and context menu](#)

[Taskbar controls](#)

[Playlist Dialog](#)

[Controls](#)

[Adding audio- and playlist-files to a playlist](#)

[Modification of the playlist](#)

[Drag and Drop](#)

[Accelerator keys and context menu](#)

[File Properties Dialog](#)

[ID3 Tag](#)

[Playback Properties](#)

[Volume Preset](#)

[Duration Setting](#)

[MPEG Statistics](#)

[Properties Dialog](#)

[‘ Audio Device’-tab](#)

[Playback device](#)

[Playback parameters](#)

[Playback callback](#)

[‘ Playback Mode’-tab](#)

[Downsampling options](#)

Sound quality

' Buffers'-tab

Audio buffer size

' Controls'-tab

Taskbar controls

Information scroller

Dialog size

' Internet'-tab

Proxy server

User account

Downloading options

Uninstalling museArc

museArc Registration

Support

You will find the newest information about this product in the enclosed 'readme.txt'-file of this software package.
So if you do not find the information you're searching for within this file, you should also look into the readme file
bevor you contact our support center.

About museArc

museArc is an audio player designed for Windows95™ and WindowsNT™. It is capable of playing all MPEG 1/2 audio layer II AND III streams which are conforming to ISO/IEC 11172-3 and/or ISO/IEC 13818-3.

What are MPEG audio streams?

MPEG (the Motion Picture Experts Group) has developed some special algorithms to reduce the size of compressed audio and video files.

The used algorithms are called lossy compression algorithms, because some information stored in the original audio file is thrown away to reduce the size of the compressed file. The information to be discarded is selected to be insensitive to the human cognitive system. In other words, the information that is discarded during compression can not be heard by human beings anyway.

So this kind of compression method makes it possible to reduce the amount of data to about 1/12 (8%) of the original size of an audio file without noticeable quality loss. Up to 15 hours of high quality MPEG music ("CD-quality") can be stored on a single CD (uncompressed: only 75minutes).

Features of museArc

NEW! museArc can now play in a continuous mode stream after stream without any pausing between. So you can now sample the tracks of a CD as single tracks, but can hear them played as one track.

NEW! Command line options are now included.

NEW! Improved playlist editor. Supports now ID3 tags, so you can store information about a stream file (artist, album name, release year, etc.) within the stream file.

The decoding algorithms need quite a lot of CPU performance. museArc is capable of playing these compressed audio streams with using up to 10-15% processor time on a PentiumPro™ 200MHz. So you can play your MPEG audio streams in the background while working with other applications.

museArc has also a very powerful graphical user interface to provide a simple and intuitive user interaction. It just works like a normal CD-player with random- and repeat-playback. You can edit playlists with the built-in playlist editor. A playlist is a list of audio streams you want to play one after another. With the playlist editor, you can select the playback order, add or remove audio streams, and much more.

museArc always gives you best access to your audio files. Full 'Drag and Drop'-support is implemented. You can drag your audio files from explorer and just drop them either on playlist editor window, which will automatically search your directories and subdirectories for MPEG audio files, or on the main control dialog, which will automatically generate a temporary playlist.

All controls show a short tool tip if you stop the mouse for about half a second. The bubble text will give you a short explanation of the control.

The most common functions can always be accessed via context menus, which will appear whenever you click the right mouse button in a dialog.

The main playback controls are also available from the taskbar icon area. These controls allow you to access museArc without even seeing the museArc control dialog. So you can completely hide the museArc dialog from the desktop and still access all playback functions.

museArc also allows direct HTTP streaming of audio files via Internet. The played HTTP files can optionally be saved on hard disk for later use.

Installation

To install *museArc* please follow the steps listed below:

1. Create a temporary directory or use your '**TEMP**'-directory.
2. Extract the *museArc* archive file. We suggest to use '**PKUNZIP**' version >2.04g or 'Winzip'.
3. Start the '**setup.exe**' program from the directory you just extracted the *museArc* archive.

The setup wizard will now guide you through the installation process. You can configure the installation of *museArc* to your needs and the setup wizard will make all necessary changes to your system automatically.

After you have installed museArc successfully, you can start museArc by either double clicking on the museArc program icon in the program group or by selecting museArc from your start menu.

Configure museArc as Helper Application

museArc can be used as a helper application in your WWW-browser to let you directly play MPEG audio files you download.

To add *museArc* as a helper application you have to do the following steps. (These may vary depending on the used browser, so you may have to look in the manual):

1. Open the preferences dialog of your browser.
2. Select the **'Helper'**-tab.
3. Assign all **'audio/mp2'**-, **'audio/mp3'**-, **'audio/pls'**-, **'audio/m3u'**- and **'audio/x-mpeg'** file types to museArc.

This should make it possible to let *museArc* play your MPEG audio files automatically after downloading them. For direct Internet streaming of MPEG audio files please see ['Opening a file or playlist via Internet'](#).

First Start of *museArc*

The first time you start *museArc* you will see a license contract. Read this license contract carefully. If you agree with the license contract, press the **‘OK’** button.

If you do not agree, press the **‘Cancel’** button and *museArc* will terminate. You have to uninstall *museArc* from your system now.

After you agreed with the license contract, the playback properties window pops up. Select your desired playback device and playback mode (stereo/mono, 8/16bit samples) and press the **‘OK’** button.

The other settings in the properties dialog are explained in the appropriate chapters. At the moment, you should start *museArc* with the default parameters.

museArc Common Control Design

This section will help you to use the museArc controls. It describes common control design ideas as well as detailed features of each control element.

Common dialog usage

Each dialog of museArc is designed to make the interaction with the user as intuitively as possible.

All standard control functions of a windows application like ' Tooltips' or 'Context Help' are implemented.

Each dialog supports context menus. Just press the right mouse button and a local menu will appear. This menu lets you choose all available functions directly, or you can use a key combination to get fast access to the dialog controls.

Tool Tips

Each dialog element features has a 'tool tip'. This tool tip is a short description of the element's functionality.

You can activate the tool tips just by pointing with your mouse pointer on the desired control element and remain there for about 0.5 seconds without moving the mouse pointer or clicking any mouse buttons. After this time a little window will appear containing a short element description.

Context Help

If you don't know how to proceed further you can press the **'F1'**-key or the **'Help'**-button if available. A help window will appear and give you some information about the current dialog your using.

This context sensitive help is quite useful to get fast help without searching in the help text on your own.

Main Control Dialog

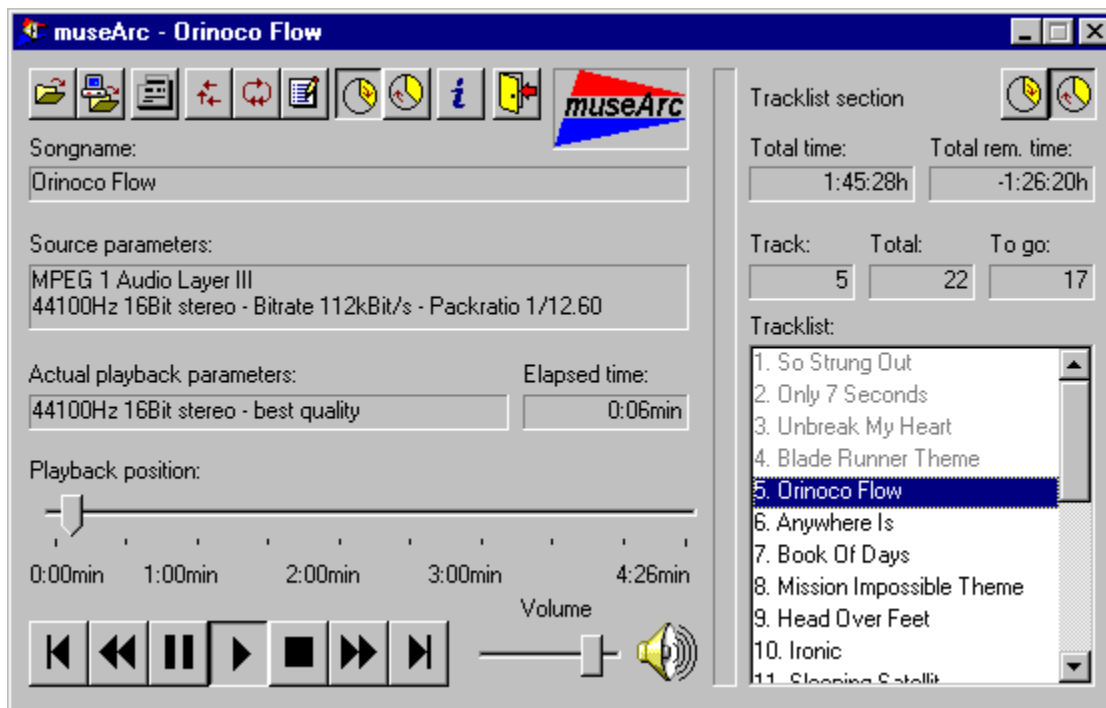
The main dialog gives you complete control over all functions of *museArc*.

All necessary data about the current file and playlist will be displayed here as well as all playback controls. Most functions can be accessed via context menus or by using shortcut keys. You can also change the size of the dialog window or even hide it completely from your desktop.

The dialog also provides the full 'Drag and Drop' capability.

Controls

To get information about a dialog element just click on it in the picture below.



Drag and Drop

You can select files for playback either by using the open dialog or by using the **'Drag and Drop'** functionality of windows.

'Drag and Drop' means that you can select files using explorer. Select the files and then move them from your explorer window to the *museArc* window like you move files into your trash can.

You can even select multiple files or playlist files. *museArc* will automatically switch to multitrack mode.

Resizing and hiding the dialog window

museArc is capable of resizing or even hiding its main dialog window.

The size of the main dialog window can either be changed by using the properties dialog or by double clicking with the left mouse button on the museArc logo. The window will then change its size periodically from the largest to the smallest window size.

To hide the dialog window (remove the window from your desktop and taskbar) select the option from the properties dialog. Another way to hide the window is to use the context menu or accelerator key. Or you can just double click on the *museArc* taskbar icon.

Accelerator keys and context menu

You can access all functions of the main dialog by using context menus. To get the context menu like the one displayed below, just click the right mouse button anywhere in the dialog window or on the *museArc* logo icon in the taskbar.

museArc	
<u>O</u> pen...	Alt+O
Ope <u>n</u> URL	Alt+U
<u>E</u> dit playlist	Alt+E
<hr/>	
<u>R</u> andom	Alt+R
Repea <u>t</u>	Alt+T
<hr/>	
<u>P</u> lay	Alt+P
<u>P</u> ause	Alt+A
<u>S</u> top	Alt+S
<u>N</u> ext song	Alt+N
<u>P</u> revious song	Alt+V
<hr/>	
<u>H</u> ide	Alt+H
<hr/>	
Propert <u>i</u> es	Alt+I
<hr/>	
Help	F1
<hr/>	
<u>E</u> xit	Alt+X

After the context menu pops up you can select the desired function by selecting the appropriate menu item. To cancel the context menu click somewhere outside the popup menu.

As you see in the picture above, all context menu functions also have shortcut key combinations. Press one of the key combinations below to get quick access to the dialog controls.

Be sure that the *museArc* dialog has the input focus

The keycodes are a combination of two keys which have to be pressed simultaneously, e.g. the keycode '**ALT+O**' means first press the '**ALT**'-key and hold this key pressed. Step two: press the '**O**'-key and then release both keys.

Keycode	Function
Alt + O	<u>Open a file.</u>
Alt + U	<u>Open a URL.</u>
Alt + E	<u>Open the playlist editor.</u>
Alt + R	<u>Enable or disable random playback.</u>
Alt + T	<u>Enable or disable endless playback.</u>
Alt + P	<u>Start playback.</u>
Alt + A	<u>Pause playback.</u>
Alt + S	<u>Stop playback.</u>
Alt + N	<u>Jump to next audio file.</u>

Alt + V	<u>Jump to previous audio file.</u>
Alt + H	<u>Hide the dialog window.</u>
Alt + I	<u>Open the properties dialog.</u>
Alt + X	<u>Exit <i>museArc</i>.</u>
F1	<u>Get help on the actual topic</u>

Taskbar controls

To control the most common playback functions without the need of displaying the dialog window you can use the taskbar icons.



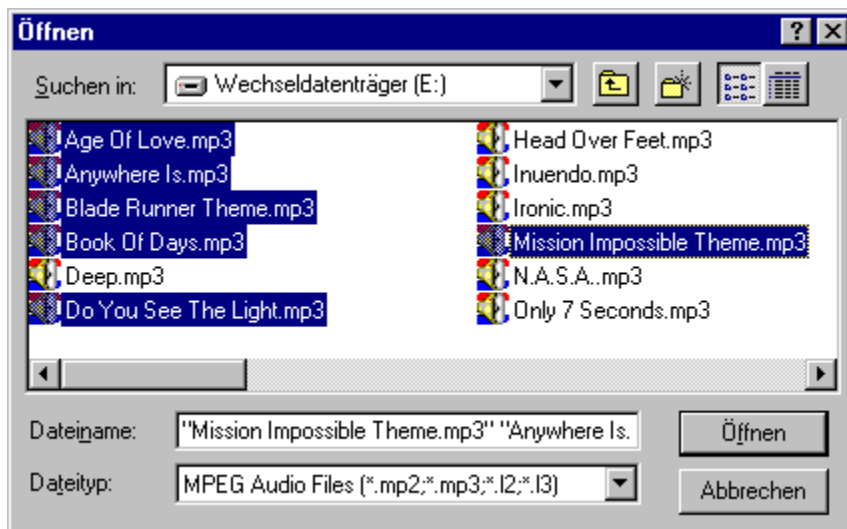
These icons are added to your taskbar after you have started museArc. The museArc logo will always be displayed while the playback icons can be removed from the taskbar.

A double click on the museArc taskbar icon hides or redisplays the dialog window. Pressing the right mouse button will pop up the context menu.

The playback icons give you control over the following functions. The icons show the same shapes as the appropriate buttons in the dialog window.

Open a MPEG Audio- or Playlist File

Press this button to open a playlist- or audio file.

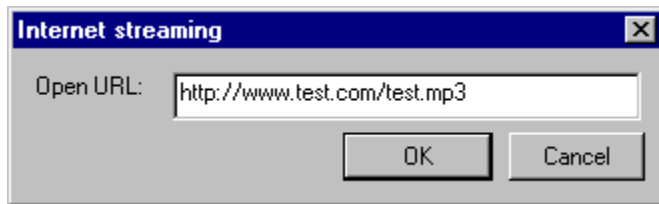


In the registered version of *museArc* you will be able to select even multiple files by using the SHIFT- or CTRL-key.

Press the SHIFT-key while clicking on a filename to select a complete list of files or use the CTRL-key during file selecting to select file by file.

Open a MPEG Audio- or Playlist File via Internet

Press this button to open a playlist- or audio file using direct Internet streaming.



Open the Properties Dialog

Press this button to display the properties dialog.

Configure *museArc* to your needs using the properties dialog.

Enable or Disable Random Playback Mode

Pressing this button enables the random playback mode.

Like a CD player *museArc* will then randomly play the files given in the playlist.

Enable or Disable Endless Playback Mode

Pressing this button enables the endless playback mode.

Like a CD player *museArc* will endlessly play the files given by restating automatically after all files have been played.

Open the Playlist Editor

Press this button to start the [playlist editor](#).

With the playlist editor you can build and/or modify playlists.

Display Elapsed Track Time

Press this button to display the elapsed playback time.

Display Remaining Track Time

Press this button to display the remaining playback time.

Open About Dialog

Press this button to display the about dialog.

It will give you a short information about the version of *museArc* you are using. To get more information about *museArc* [go here](#).

Exit museArc

Press this button to terminate *museArc*.

Change the Dialog Window Size

Double clicking on the museArc icon causes the dialog window to change its size.

(Large window Medium window Small window Large window ...)

Previous Audio File

Press this button to jump to the previous audio file in the playlist.

If random playback mode is enabled, this button has the same functionality as the 'Next'-button.

Fast Backward

Press this button to change the actual playback position like the fast reverse button on your tape recorder.

The playback position will jump to a few seconds before the actual playback position.

Pause Playback

Press this button to either pause or resume the actual playback.

Play

Press this button to start playback of either the actual audio file or a complete playlist.

Stop

Press this button to stop the audio playback and reset playlist status.

Fast Forward

Press this button to change the actual playback position like the fast forward button on your tape recorder.

The playback position will jump to a few seconds after the actual playback position.

Next Audio File

Press this button to jump to the next audio file in the playlist.

If random playback mode is enabled the next audio file will be selected randomly.

Volume

Moving this slider changes the actual volume used for playback.

You can either use the volume slider of your systems' mixer or this slider. The volume affected is the volume of the audio output device selected in the properties and NOT the global volume.

Playback Position

This slider displays the actual playback position.

Just move the slider to the playback position you want to jump to. The playback will switch automatically to the new position.

Audio Stream Information

This section displays information about the current audio stream.

The source parameters as well as the actual playback parameters and the file name are shown.

If there is a **4DOS/NT** description of the current file, it will be displayed in the '**Songname**' section.

Total Elapsed Playback Time

Pressing this button switches the total time display to elapsed time mode.

The time of all audio files played so far will be displayed.

Total Remaining Playback Time

Pressing this button switches the total time display to remaining time mode.

The playback time of all audio files waiting in the playback queue will be displayed.

Tracklist Information

This section displays some information about how many audio files have been selected, how many have already been played and how many tracks are still waiting in the playback queue.

Tracklist

The tracklist displays all selected audio files.

All audio files already played are highlighted.

If you want to switch to a specific audio file just double click with the left mouse button on its name.

You can edit the playlist in the [playlist editor](#).

If you press the right mouse button a context menu will be displayed, which allows you to display the [file properties dialog](#).

Playlist Editor Dialog

The playlist editor is designed to build and edit lists to play multiple audio files.

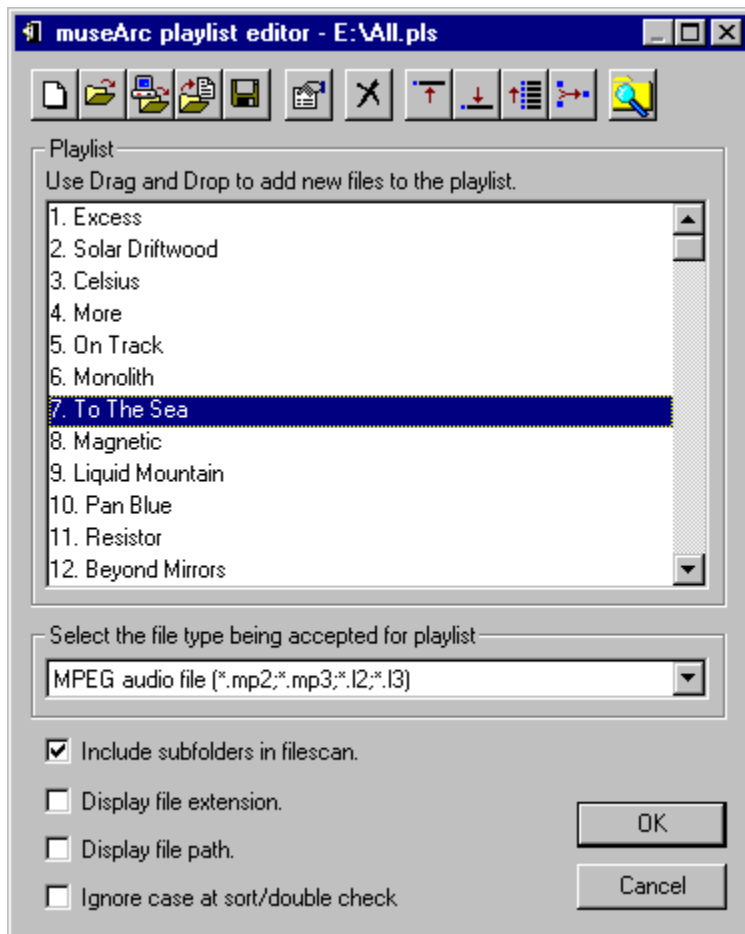
The playlist editor provides many features to make it as easy as possible to modify your playlists.

Context menus and accelerator keys are implemented, 'Drag and Drop' for easy adding files or even complete directory trees to your playlist is also supported. The common user interface structure lets you intuitively modify your playlist order and file selections.

If you end the playlist editor by using the 'OK'-button, the currently edited playlist will be automatically opened and playback is started.

Controls

To get information about a dialog element just click on it in the picture below.



Adding audio and playlist files to a playlist

Audio files are added to your playlist by using the open- or URL-dialog.

If you want to add the content of an existing playlist file use the import function.

'Drag and Drop' can also be used to add audio files.

Modification of a playlist

Playlist entries can be added, deleted or moved within the playlist.

To change the order of the files in the playlist select the filename you want to move and (like using ‘Drag and Drop’) keep the left mouse button pressed and move up or down. A thick horizontal line shows the position where the file will be inserted. To scroll the list up or down during moving a file move above or below the list box.

The registered version of *museArc* is capable of sorting the whole playlist alphabetically and removing double list entries.

Drag and Drop

You can select files for playback either by using the open dialog or by using the ‘**Drag and Drop**’ functionality of windows.

‘**Drag and Drop**’ means you select the files using explorer. Select the files and then move them from the explorer window to the *museArc* window (the way you would move files into your wastebasket).

You can even select multiple files or playlist files. *museArc* adds them automatically to your actual playlist.

The playlist editor will even scan directories for audio file types selected in the ‘file type’ list if you drop a directory instead of single files. If the button ‘Include subfolders in file scan’ is enabled, the editor even scans all subfolders of the dropped directory, so you can select all MPEG audio files of your harddisk just by dropping the root directory onto the playlist editor window.

Accelerator keys and context menu

You can access all functions of the playlist editor dialog by using context menus. To get the context menu like the one displayed below, just click the right mouse button anywhere on the dialog window.

Move to top	Alt+T
Move to bottom	Alt+B
Sort list	Alt+A
Delete doubles	Alt+D
<u>D</u> el ete item	Del
<hr/>	
Properties	Alt+P
<hr/>	
Help	F1

After the context menu pops up, you can select the desired function by selecting the appropriate menu item. To cancel the context menu click somewhere outside the popup menu.

As you see in the picture above, all context menu functions also have shortcut key combinations. Press one of the key combinations below to get quick access to the dialog controls.

Be sure that the *museArc* dialog has the input focus

The keycodes are a combination of two keys which have to be pressed simultaneously, e.g. the keycode ‘**ALT+O**’ means: first press the ‘**ALT**’-key and hold this key pressed. Step two: press the ‘**O**’-key and then release both keys.

Keycode	Function
Alt + T	<u>Move item to top of the list</u>
Alt + B	<u>Move item to bottom of the list</u>
Alt + A	<u>Sort names</u>
Alt + D	<u>Delete double entries from the playlist</u>
Del	<u>Delete the marked playlist entry</u>

Alt + P

Display the files' properties

F1

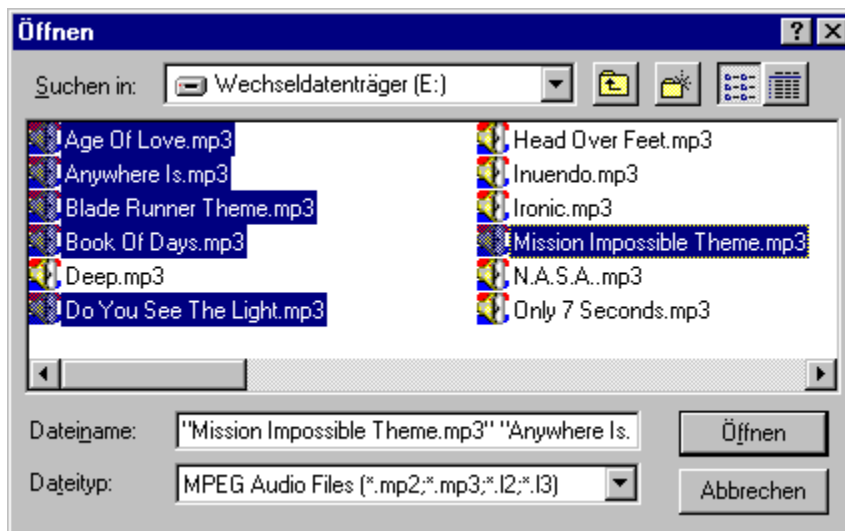
Get help on the actual topic

New

Press this button to clear the current playlist and to reset its content.

Add/Open Files

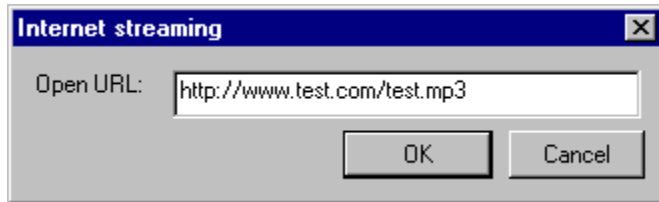
Press this button to open a playlist file or to add audio files to your playlist.



In the registered version of *museArc*, it is possible to select even multiple files by using the SHIFT- or CTRL-key. Press the SHIFT-key while clicking on a filename to select a complete group of files or use the CTRL-key to select file by file.

Add URL

Press this button to add an audio file using Internet streaming.



Import a Playlist

Press this button to import an existing playlist to the current one.

Save *Playlist*

Press this button to save the current playlist.

Move To Top

Press this button to move the currently marked list entry to the top of the list.

This feature is only available in the registered version of *museArc*.

Move To Bottom

Press this button to move the currently marked list entry to the bottom of the list.

This feature is only available in the registered version of *museArc*.

File Properties

Press this button to display or change the files' properties like ID3 tags or volume settings.

This feature is only available in the registered version of *museArc*.

Delete Playlist Entry

Press this button or the appropriate accelerator key to delete the currently marked playlist entry.

Sort Playlist

Press this button to sort the playlist entries alphabetically.

The comparison of two entries may include the file's path and/or extension.

This feature is only available in the registered version of *museArc*.

Delete Double Entries

Press this button to delete double entries in the playlist.

The comparison of two entries may include the file's path and/or extension.

This feature is only available in the registered version of *museArc*.

Launch File Manager

Press this button to quickly start file manager (explorer).

List Box

This box displays the playlist.

The playlist entries are displayed in the order used for playback. You can modify the playlist by using ‘ Drag and Drop’, accelerator keys and control buttons.

If you double click on a file name you can enter the file properties dialog quickly.

Scanning File Type Filter

Select the file types which should be added to your playlist while the playlist editor scans your dropped directories.

Subfolder Scanning

Check this button to include scanning of subfolders when you use 'Drag and Drop' to add files to the playlist.

File Extension

Check this button to display the file extension.

If you have checked this button, the file extension will be included for comparison during sorting and double entry removing.

File Path

Check this button to display the complete path of a file.

If you have checked this button, the path will be included for comparison during sorting and double removing.

Case Insensitive

Checking this button enables case insensitive sorting and double removing.

File Properties Dialog

Use the file properties dialog to modify the setting for one specific audio file. It allows you to change a few playback settings like the duration time of the file or the playback volume used.

The file properties dialog is divided into 3 sections:

ID3 Tag

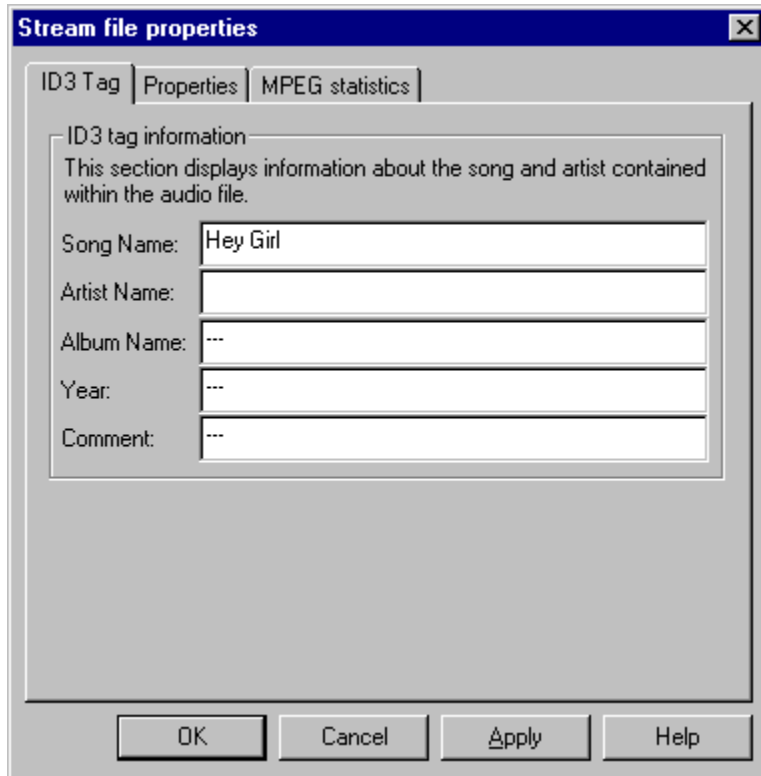
Playback Properties

MPEG Statistics

ID3 Tags

Here you can view and edit the ID3 tags of your file. ID3 tags are some specific information about the file itself. You can provide an alternative song name, the authors name and many other settings.

The information will be stored in the audio file.



The image shows a Windows-style dialog box titled "Stream file properties" with a close button (X) in the top right corner. The dialog has three tabs: "ID3 Tag", "Properties", and "MPEG statistics". The "ID3 Tag" tab is selected. Inside the dialog, there is a section titled "ID3 tag information" with a subtitle: "This section displays information about the song and artist contained within the audio file." Below this, there are five text input fields:

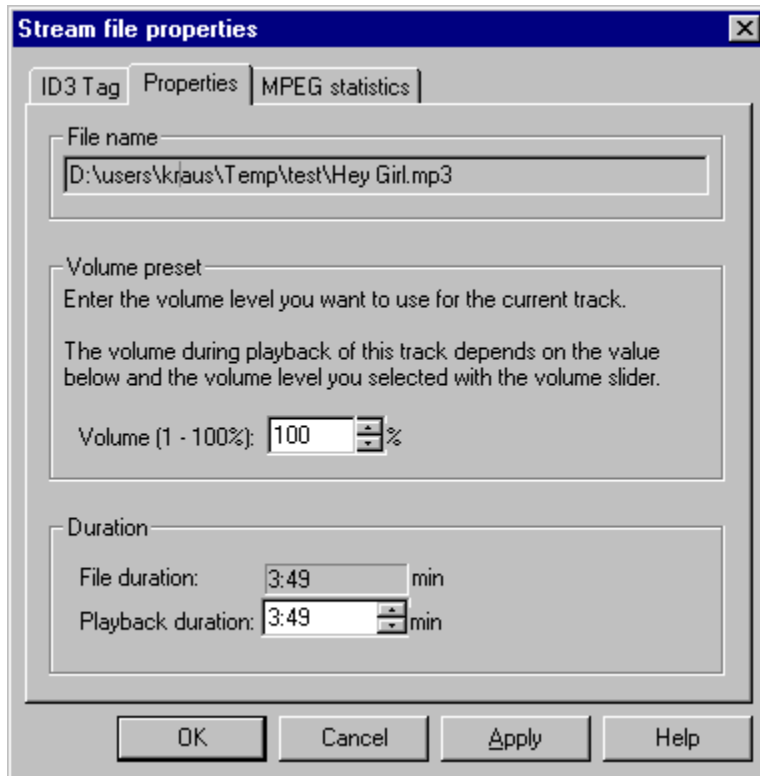
Song Name:	Hey Girl
Artist Name:	
Album Name:	---
Year:	---
Comment:	---

At the bottom of the dialog, there are four buttons: "OK", "Cancel", "Apply", and "Help".

Playback Properties

Here it is possible to set the playback volume and the files' duration. This information is stored in the playlist file, so you have to use a playlist to enable these settings. They are supposed to adjust different audio files to a common level within a playlist.

To get information about a specific section or control element in this dialog just click on it in the picture below.



Volume Preset

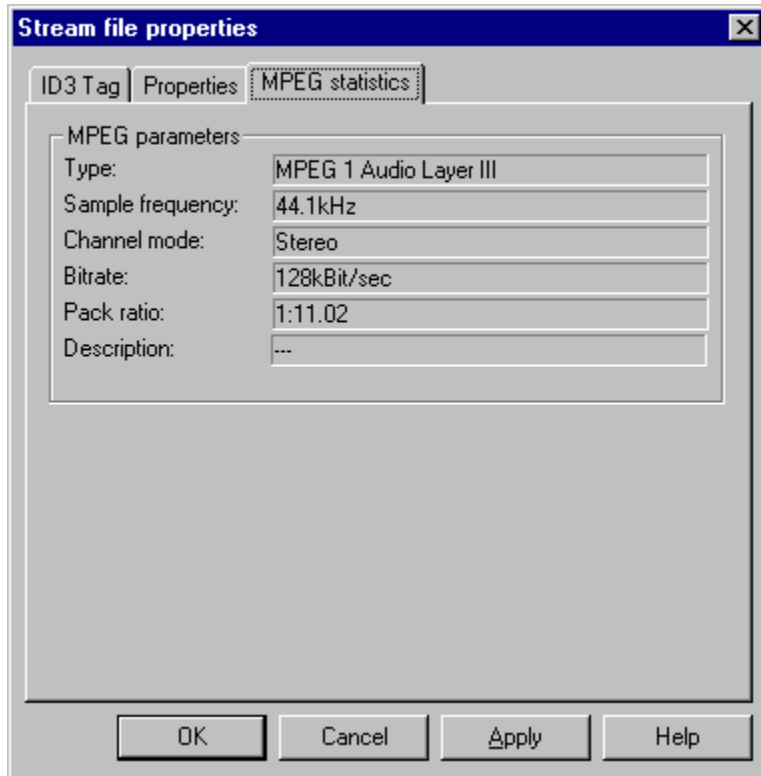
Here you can specify the volume to be used during playback of the file. You set the volume in percent of the currently used playback volume. So you can adjust the output levels of single audio file to a common level if they are used within a playlist.

Duration

You can specify another playback duration for each single file. This might be useful to cut off silence at the end of an audio file, or if you want to short the playback time manually.

MPEG Statistics

Here the MPEG statistics are displayed. You can see the sample rate, the stream rate, the files duration and a few other things which you might find interesting.



Properties Dialog

Use the properties dialog to configure museArc.

By pressing the '**Apply**' button you will immediately see the effect of your selection.

The properties dialog is divided into 5 sections:

Audio Device

Playback Mode

Buffers

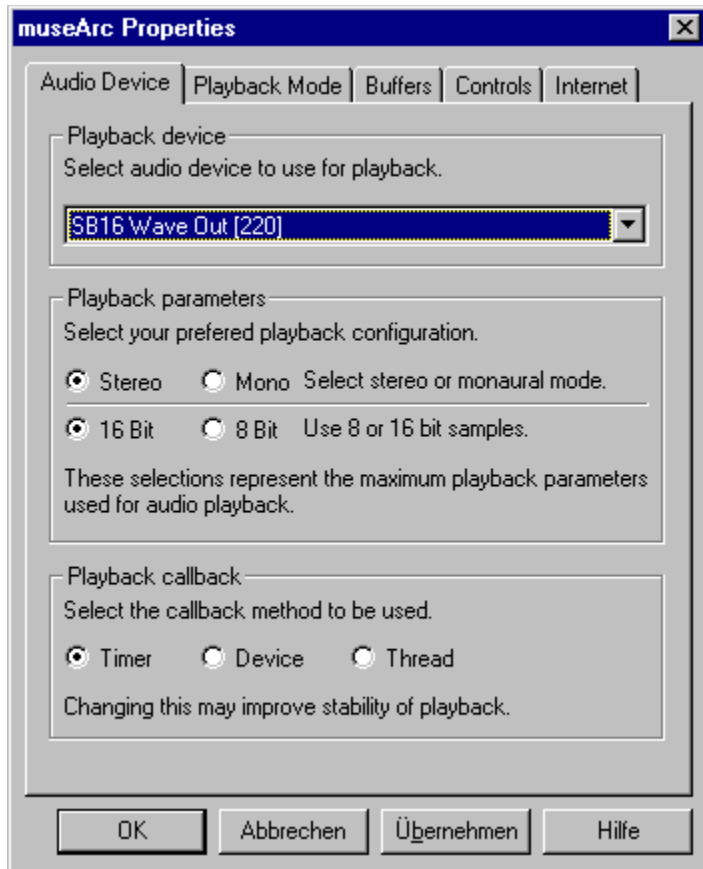
Controls

Internet

Audio Device

This tab lets you choose the playback device setting used.

To get information about a specific section or control element in this dialog just click on it in the picture below.



Audio Playback Device

This list will display all available audio playback devices. Select your favorite one or the first one in the list will be used for playback.

Audio Playback Parameters

This section lets you choose the maximum playback quality used. By default the best playback parameters are used, but if you want to choose other playback settings do this here.

If you want only to use 8-bit output samples select the appropriate button.

If stereo playback is enabled audio streams are decoded and played in stereo if they support this mode. Switching to mono decreases decoding CPU performance for stereo audio files, but only monaural playback is used.

Audio Playback Callback

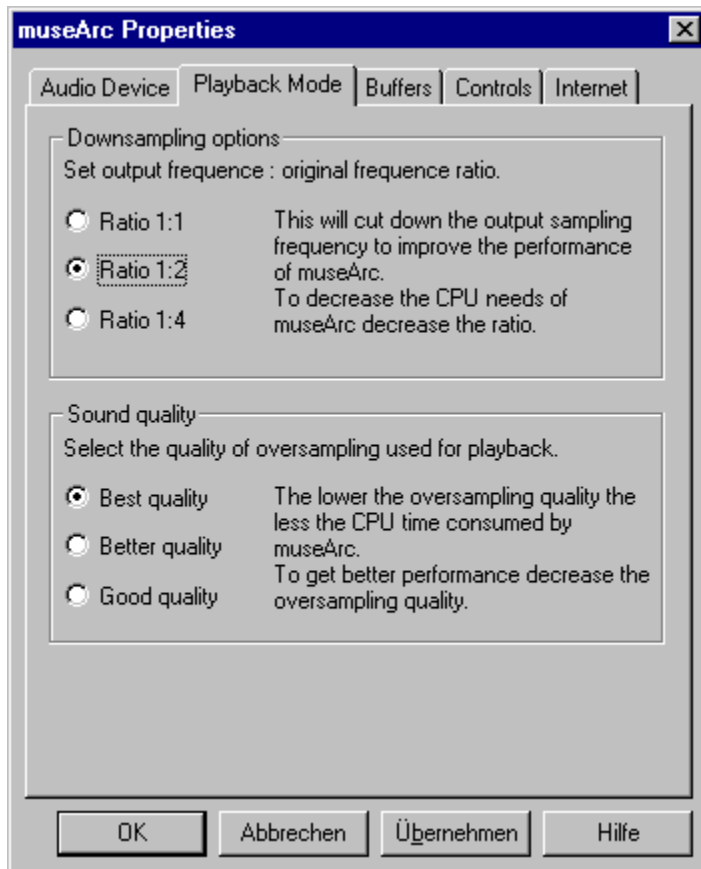
museArc supports three possible ways to schedule the background playback. You should only change it from the default if you experience problems.

- **Timer callback**
The timer callback is selected by default. A high precision multimedia timer is used for scheduling. This option should work on all systems and should get the best and most stable playback.
- **Device callback**
The audio device driver does the scheduling. Under Windows NT, this option is disabled because this feature is not supported by any device driver so far. Most audio device drivers for Windows 95 support this kind of callback, however there is no method to detect if everything works fine. So if ***museArc*** won't play at all, try either 'timer'- or 'thread'-callback.
- **Thread callback**
museArc starts another thread for scheduling. This also works on all systems, but it is usually not as stable as the 'timer'-callback (depends on your system performance and memory)

Playback Mode

Although museArc is a fast MPEG decoder, on slow machines it may not be possible to play an audio stream at the highest quality. To decrease the CPU performance, you can lower the quality of playback.

To get information about a specific section or control element in this dialog just click on it in the picture below.



Downsampling Options

Used to decrease the output sample frequency:

- Use one half of the originally encoded sample frequency for playback.
- Use one quarter of the originally encoded sample frequency for playback.

Because of the lower output sample frequency, less data has to be calculated and more CPU time will be available for other applications.

Sound Quality

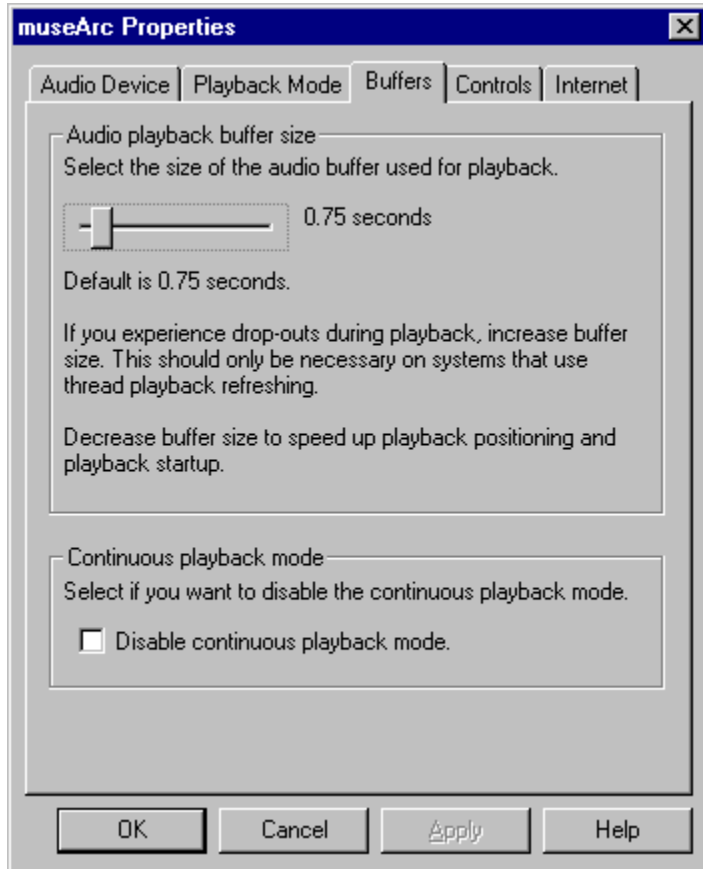
Used to reduce oversampling calculation.

The better the quality, the more CPU time is needed for decoding.

Audio Buffers

This tab lets you configure the audio buffer settings. museArc precalculates audio data for playback. The amount of data precalculated is given by the size of the audio buffer. If you experience drop-outs during playback, setting a bigger buffer size may help.

To get information about a specific section or control element in this dialog just click on it in the picture below.



Audio Buffer Size

Use this slider to choose the size of the audio buffer used for audio playback. This value can range from 0.5 to 4.0 seconds.

The size of the audio buffer specifies the amount of precalculated audio data. This means if you increase the audio buffer size, *museArc* will need more time at the start of a audio file (and after all playback position changes) to fill the buffer with precalculated audio data.

Increasing this value gives a more stable playback, because *museArc* is more robust against timing problems (e.g. CD-ROM accesses, modem callbacks, applications with many hard disk accesses etc.).

Decreasing this value speeds up starting a new audio stream, as well as changing the actual playback position.

The default buffer size is 0.75 seconds.

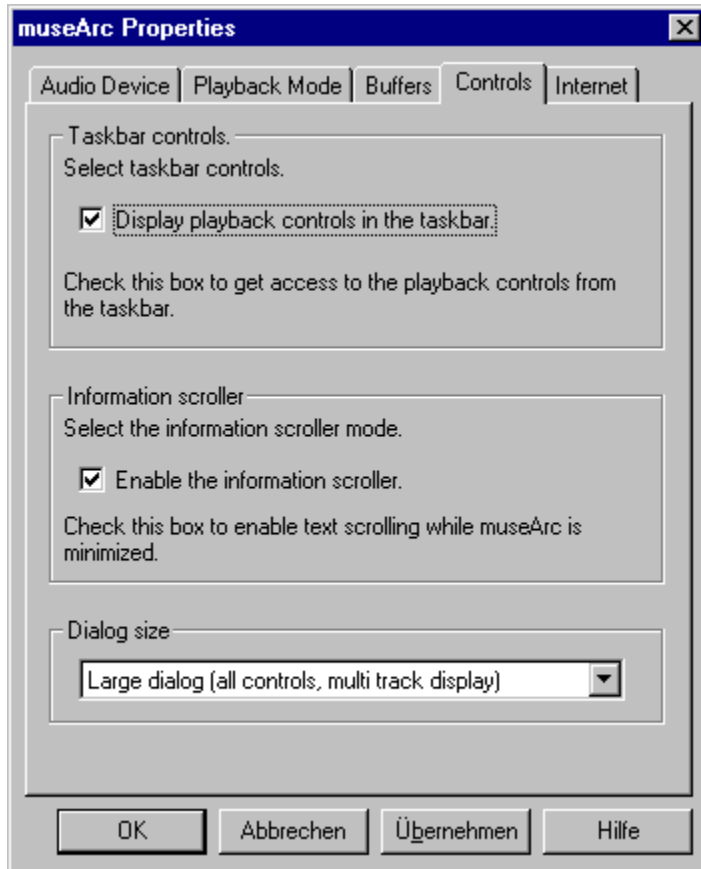
Continuous Playback

With this switch you can activate or deactivate the continuous playback mode. This might be useful if you either do not want this kind of playback.

Dialog Control

You can use the main dialog window of museArc in many ways. This tab lets you choose the settings you want for the main dialog window.

To get information about a specific section or control element in this dialog just click on it in the picture below!



Taskbar Icons

You can control the playback of museArc without seeing the dialog window. All necessary controls are displayed in the taskbar icon section. However, if you do not want the control icons in your taskbar, uncheck this button to remove the icons from the taskbar.

If you want to enable the icons again, just check this button.

Information Scroller

If you minimize the main dialog window, the information scroller is activated by default. The information scroller displays some information (about the actual audio stream and playback status). This information is scrolled like a banner in your taskbar window caption.

If you do not like this feature, uncheck this button and the information scroller will be disabled.

To activate the information scroller again, just check this button.

Main Dialog Window Size

By default *museArc* displays the large main window. This window displays all control elements and information areas. If you think this window is too big or you just don't need all information displayed, you can select two more window sizes for the main dialog window.

The 'medium' size window removes all information areas but leaves all controls being displayed. The 'small' size window only displays major control elements.

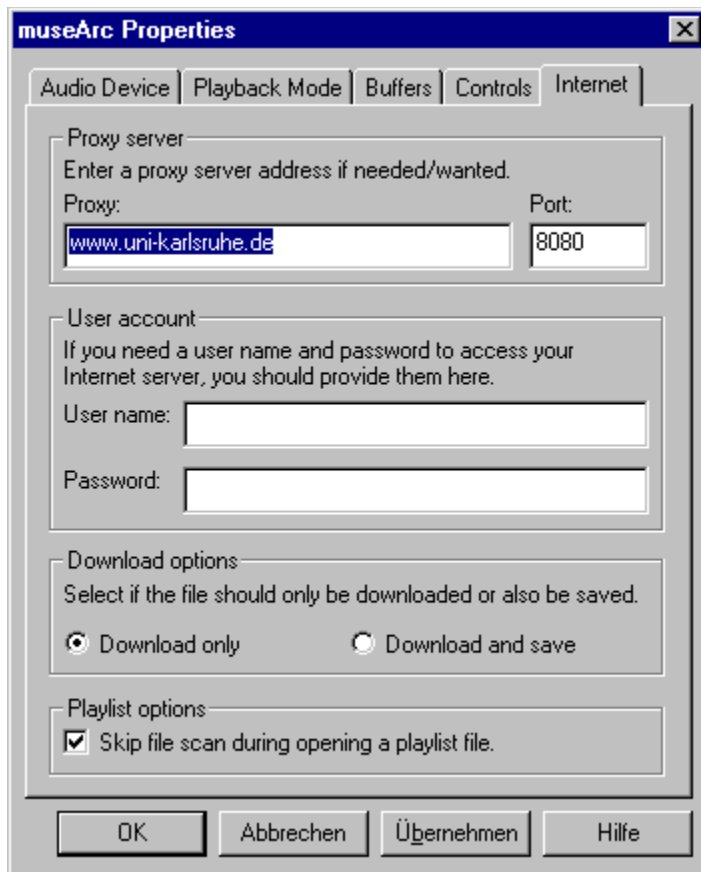
The last feature is the option to completely hide the main dialog window. By choosing this option, the main dialog window will disappear from your desktop and even from your taskbar. To display the window again, either double click on the museArc icons in the taskbar, or press the right mouse button while pointing to the museArc taskbar icon, select 'Properties' and change the setting.

Internet options

museArc is capable of direct Internet streaming. You can download a playlist- or audio file from a WWW-server without the need of any additional programs to get access to the desired files.

If you want to use Internet streaming, you should check this tab (check if every setting is correct).

To get information about a specific section or control element in this dialog just click on it in the picture below.



Proxy Server

In this section you can enter a proxy server used for downloading the files. You should also provide the correct port number used to access the proxy server. If you don't know the access port, leave this field empty. *museArc* will try to use the standard port for proxies.

ATTENTION!! Just enter the address of the proxy server. Do NOT enter any protocol specific access types. This means if your proxy server has the address 'http://www.dummy.com' you should only enter 'www.dummy.com' in the proxy server field.

If you do not want or need a proxy server for your Internet connections, just leave the proxy server address field empty.

User Account

Some users access their audio files through user accounts.

If you need an user account to download your files, enter your user ID and password.

Leave this section empty if no user account has to be used for accessing files.

Downloading Options

This section lets you choose if you want the files you select for direct Internet streaming being saved on your local drive while downloading. At the moment this option is only activated for files opened with the 'Open URL'-dialog.

HTTP Files specified in a playlist will NOT be downloaded to your local drive. If you want to download a file, you have to open it manually.

The second part of this section is only important if you use playlist files with files specified for direct Internet streaming.

museArc must look at all files selected in a playlist to get the whole playback time of the complete playlist. But an Internet connection to a file may take a while to be set up. So with the button 'Skip file scan during opening a playlist' you choose if you want ***museArc*** to look even for Internet streaming files or if ***museArc*** should skip them during the file scan to make the startup faster. Skipping the Internet streaming files results in a incorrect playtime display of the playlist file.

Uninstallation

If you want to uninstall *museArc* follow the steps described below:

Windows 95 / Windows NT 4.0:

1. Click on '**Start/Properties/Systemconfiguration**'. A window with your controls for the systems' components should appear now.
2. Select '**Software**' by double clicking on it.
3. Select from the file list you see '**museArc**' and press the button '**Add/Remove**'.
4. The uninstall shield is now launched. Just follow the instructions of the uninstall shield.
5. *museArc* should now be removed from your system.

Windows NT 3.51:

1. Select '**Uninstall**' from the museArc-program group
2. The uninstall program is now launched. Just follow the instructions.
3. *museArc* should now be removed from your system.

museArc Registration

museArc is distributed as a trial version with certain restrictions. If you want to receive the final version without restrictions, you have to purchase a license.

The license you purchase is a non-exclusive right-to-use license. You may upgrade to future versions of *museArc* at no additional charge. Note that it is your responsibility to obtain upgrades when you need them from an ftp site or by other means and getting the upgrades to you is not included in the license --the right-to-use upgrades you obtain is.

When you register the software, you're registering for **one** computer.

The registration price is:

1. for private use **DM 50,-/computer (US \$30/computer)**
2. for commercial use **DM 100,-/computer (US \$60/computer)**
(subject to change without notice)

You may pay by

- Credit card
Use our online registration form to pay by credit card.
Online registration available at: <http://www.codearts.com>
- Eurocheque (in DM)
- Bank transfer to account:
Sparkasse Wiesloch
account no. 55 11 555
bank code 672 522 40
Please don't forget to specify your address.
Please send it by an extra letter or e-mail.
- Sending ready money (US \$ or DM) in a letter (no coins). For security, you should use a registered letter.

For orders from outside Germany:

- International bank transfer is very expensive. Therefore, if you prefer to pay by bank transfer, please add 5% but at least a minimum of DM 20,- (US \$12) for our bank transfer expenses.
- "cash on delivery", expenses: Germany +DM 6,- (US \$4), Europe +DM 16 (US \$10).

You may receive the registered version of *museArc* by the following ways:

- via e-mail. We will send you an e-mail with the registered version attached.
- Download the registered version of *museArc* from an URL yourself. We will send you an URL from where you can download the *museArc* package.
- Receive the *museArc* disk(s) (3,5") via parcel-post. Add DM 5,- (US \$3) for postage and package.

Cheques and Orders should be made out to:

codeArts GdbR
Am Hang 11

**D-69231 Rauenberg
Germany**

Orders can also be sent via e-mail to
order@codearts.com

Please print and complete the following order form to register, or include all the information in the file with your order. If you send your order by e-mail, you will receive your registration number after receipt of the registration fee.

{button ,CT());SH('notepad','notepad',0x0302)} Press this button to edit the registration form.

museArc 4.5 Registration Order

To:
codeArts GdbR
Am Hang 11
D-69231 Rauenberg
Germany

CONTACT ADDRESS:

Title/Company: -----

Person/Dept.: -----

Street Address: -----

City ,Country: -----

Phone: ----- Fax: -----

Electronic Mail Address: -----

If applicable EU-VAT No: -----

ORDER AND PAYMENT:

(Note: payment in US \$ is only possible if you include cash or
if you pay by bank transfer. All other payments must be in DM.)

Number of

private licenses	:	-----	x DM 50,- / US \$30
commercial licenses	:	-----	x DM 100,- / US \$60

Germans add 15% VAT (Mwst.): -----

Bank-expenses:

[] Credit Card + DM 0,-

Card No.: -----

Expire Date: / /

[] EuroCheque (in DM) enclosed + DM 5,-

[] send by "cash on delivery" (per Nachnahme)

Germany: + DM 6,- / US \$ 3
Europe: + DM 16,- / US \$ 9

[] bank transfer

(include paying-in receipt)

inside Germany: + DM 0,-
outside Germany: + DM 20,- / US \$11

[] cash included + DM 0,-
(can also use traveller's cheques)

DELIVERY:

Postage and package:

Deliver

[] via e-mail + DM 0,-

[] download from URL yourself + DM 0,-

[] via parcel-post + DM 5,- / US \$ 3

Charge-Total: -----

Date: _____ Signature: _____

For our information:

How did you learn about museArc?

- [] - via News/WWW
- [] - magazine _____
- [] - other

How did you get your copy of museArc?

- [] - via ftp/WWW from server: _____
- [] - other

Support

The newest version of ***museArc*** will be available on our homepage:

`http://www.codearts.com`

For bugreports, comments or questions please send an email to the following address:

`suport@codearts.com`

*If you found a bug in ***museArc*** and you consider sending us an e-mail, please make sure to give us your system configuration (windows version, soundcard, processor and motherboard type).*

