

Upgrade to Borland Delphi

[Contents](#)

[Delphi factsheet](#)

[Borland offices](#)

[Your first Delphi program](#)

Upgrade to the full Borland Delphi 1.0 and get many more features:

- Over 40 more components including
TabSet; NoteBook; TabbedNotebook; MaskEdit; Outline; Header; ScrollBox; StoredProc; Database;
BatchMove; Report; DBGrid; DBListBox; DBComboBox; DBCheckBox; DBRadioGroup; DBLookupList;
DBLookupCombo; PrintDialog; PrinterSetupDialog; FindDialog; ReplaceDialog; FileListBox;
DirectoryListBox; DriveComboBox; FilterComboBox; OLEContainer; DDEClientConv; DDEClientItem;
DDEServerConv; DDEServerItem; BiSwitch; BiGauge; BiPict; ChartFX; Gauge; ColorGrid; SpinButton;
SpinEdit; DirectoryOutline
- Full Database Support and Reporting
Many more database components; Database Desktop; Local InterBase SQL Server; ReportSmith
- DDE and OLE Support
Create applications that contain embedded objects, and can take advantage of DDE connections to
other Windows applications
- Computer based tutorial, experts, templates and the gallery
Tools to teach you Delphi quickly, and make you more productive.
- Complete documentation and full on-line help
- Many utilities and sample files

To purchase the full Borland Delphi 1.0 product either:

Call Future Publishing on 01225 822510 or

Contact your local dealer or

Call Borland Customer Services for dealer information on 0990 561281

In the United States, call 1-800-932-9994 ext 1306

Register your copy of Delphi Primer Edition!

New! Delphi 2.0 for Windows 95/NT Information!

Borland Delphi Factsheet

[Contents](#)

[Delphi factsheet](#)

[Borland offices](#)

[Your first Delphi program](#)

Register your copy of Delphi Primer Edition!

RADical performance Windows and client/server development tools

*Delphi and Delphi Client/Server are the only development tools that provide the Rapid Application Development (RAD) benefits of visual component-based design, the power of an optimizing native code **compiler** and a scalable client/server solution.*

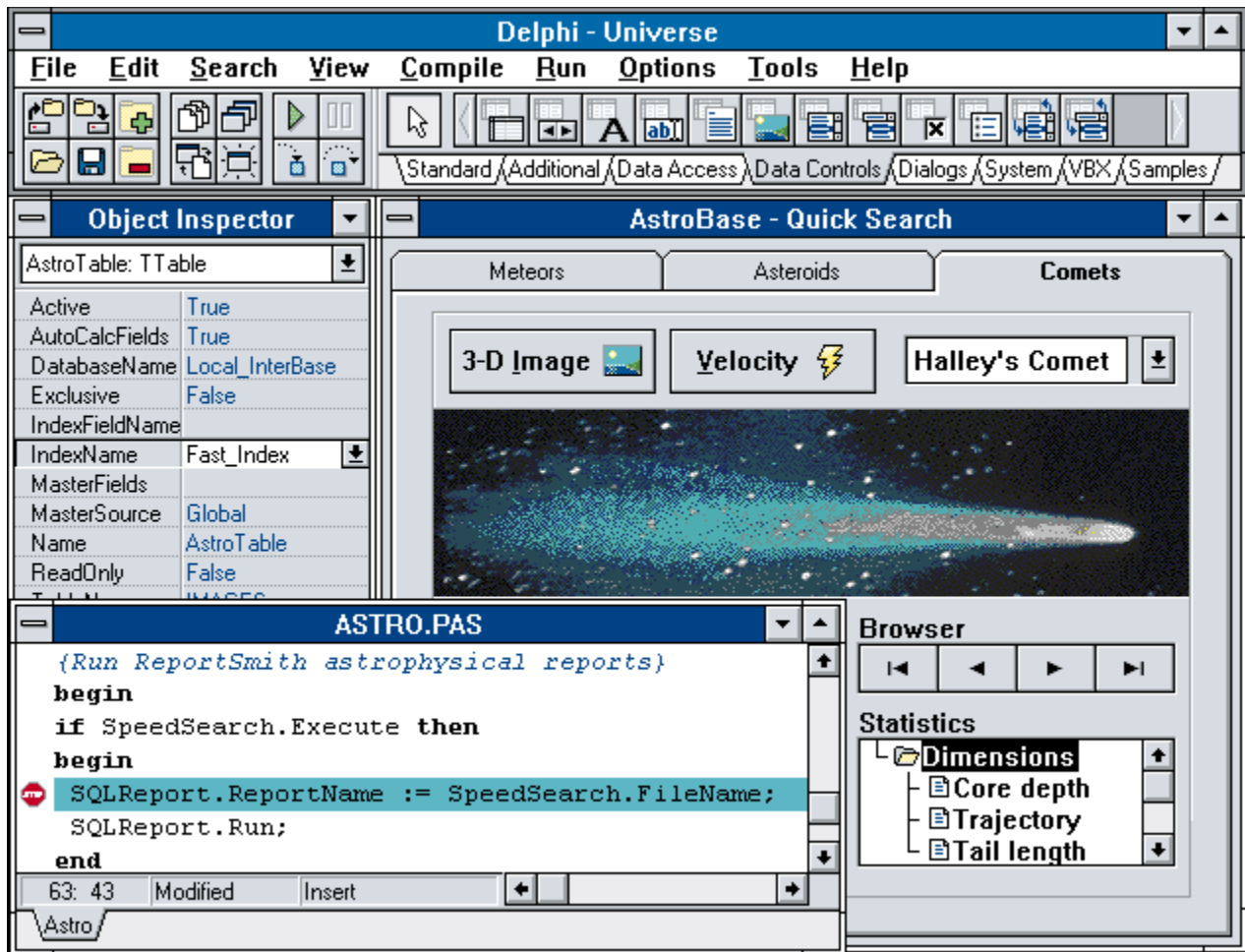
Delphi and Delphi Client/Server represent the next generation in:

- Performance - with the world's fastest compiler
- Rapid Application Development - via visual Two-Way-Tools(TM)
- Component Reuse - a true object-oriented environment
- High-performance client/server development

The fastest way to the fastest applications

Delphi and Delphi Client/Server are the next-generation visual development tools, combining the most intuitive visual design environment, the unrivaled performance of a world-class optimizing native code compiler, and complete client/server support. They compile Windows applications at more than **350,000 lines per minute**.* An automatic MAKE facility ensures that only code that has been changed is recompiled for maximum efficiency, and the **built-in assembler** allows for ultimate fine-tuned performance.

The resulting executable files (EXEs) are lean, highly efficient, and run **10 to 20 times faster** than interpreted p-code. Delphi EXEs are immediately deployable, **royalty-free**, and require no runtime interpreter Dynamic Link Library (DLL), so maximum performance is guaranteed.



The Visual Component Library lets you build complete client/server application quickly.

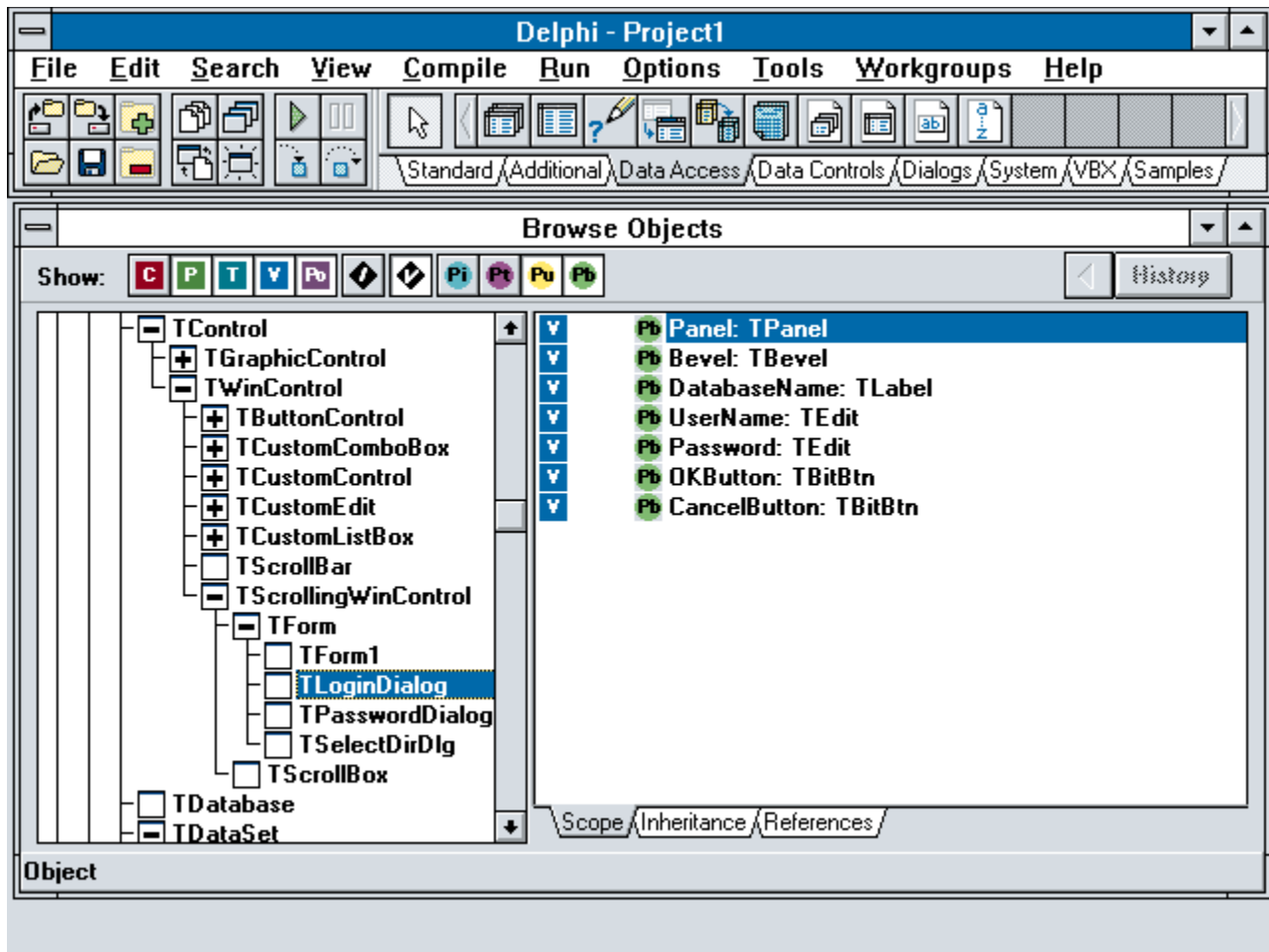
RAD, from prototype to production

"When it comes to keeping required coding to a minimum, Delphi excels"
 Windows Sources
 December 1994

The comprehensive suite of visual design and debugging tools accelerate development so you move seamlessly from prototyping to deployment. You'll create high-performance applications in record time with the gallery of reusable forms, project templates, programming experts, and context-sensitive intelligent help.

And smart **computer-based tutorials** guide you through your project and help explain concepts.

The **Object Inspector**® provides complete access to properties and events of a selected component, with smart Property Editors for rapid design changes. The **Project Manager** provides an overview of all forms and code for a development project, while the **ObjectBrowser(TM)** provides a graphical view of the overall object hierarchy.



Analyze and manage your object hierarchy visually with the ObjectBrowser in Delphi.

The sophisticated **GUI Debugger** jumps directly to the point in the source code where problems occur, so you can find and fix problems quickly and easily. And full support for **conditional breakpoints**, watchpoints, call stack monitoring, single-step execution, and trace mode are included.

A suite of powerful Windows resource editors lets you create and modify menus, icons, cursors, and bitmaps for low-level debugging. The **WinSight(TM)** utility allows you to monitor the Windows messaging flow, while **WinSpector(TM)** instantly provides comprehensive diagnostic details.

Visual Two-Way-Tools for power programming

With Delphi and Delphi Client/Server, you can always get to your code, and everything you can do visually can also be done in code. Innovative **Two-Way-Tools** maximize your productivity by letting you move seamlessly between the visual design environment and the synchronized underlying source code.

Switching between the visual design mode and the intelligent **BRIEF®-style** source code editor is rapid and intuitive. It supports advanced editing features such as Color Syntax Highlighting, macro recording, column block marking, and regular expression support.

Reuse components to maximize productivity

The comprehensive **Visual Component Library (VCL)**, a collection of more than 75 objects such as dialogs, buttons, and list boxes, includes a host of additional reusable objects including database controls,

notebook tabs, grids, multimedia controls, and much more!



Create reusable components with Delphi and leverage your expertise by adding drag-and-drop objects to the Component Palette.

The completely customizable Integrated Development Environment can be tailored to individual or corporate preferences. Custom **reusable components** and commercial VBXs are easily added to the fully reconfigurable Component Palette. You can create and install your own application and form templates. And the component-based architecture allows you to seamlessly integrate DLLs, VBX controls, and OLE 2.0 servers into your applications.

"Delphi gives developers exactly what they need to create complete applications, posthaste."
Susan Ryan
InfoWorld

Integrated database support and reporting capabilities

Delphi and Delphi Client/Server incorporate the Borland Database Engine (BDE), providing direct access to data stored in dBASE®, Paradox®, and the Local InterBase® Server, and to other data formats via ODBC. And **data-aware controls** allow manipulation of live data at design time, improving project turnaround time.

A selection of **Visual Data Objects** helps make sophisticated database application design a breeze. And the included **Database Desktop(TM)** utility lets you create or restructure tables and manage connections, insulating compiled applications from changes in database locations.

Delphi includes the PC version of ReportSmith®, Borland's award-winning database reporting and query tool that supports **live data access** at design time. ReportSmith supports a wide range of popular database formats, and provides a variety of graphing, tabulating, and charting options.

The ultimate complementary tool

If you prefer to work with a variety of programming tools, Delphi and Delphi Client/Server are the perfect additions to your toolset. They allow you to create **reusable DLLs** that can be called from applications built with C++, Paradox, dBASE, PowerBuilder, Visual Basic, and other popular development tools. They can also use standard VBX controls, OLE2.0 servers, DLLs created by other development tools, Microsoft multimedia, MAPI, and pen computing APIs. No matter what you program with today, the **component-based design** makes Delphi and Delphi Client/Server valuable additions that leverage your existing investment in code.

You get the control and flexibility you demand with complete access to the Windows API, while remaining shielded from the complexities of Windows programming.

Object-Oriented Programming

The underlying Object Pascal language has been enhanced to fully support **exception handling**. General protection faults, disk I/O errors, and other dreaded problems are automatically trapped. And it offers all of

the benefits of a structured programming language and a **true object-oriented development tool**, including polymorphism, inheritance, and encapsulation. So applications are incredibly robust and deliver superior solutions for all of your mission-critical projects.

Enhanced compiler features such as **conditional compilation** and **smart linking** make it even easier to rapidly design professional applications intended for a variety of target environments.

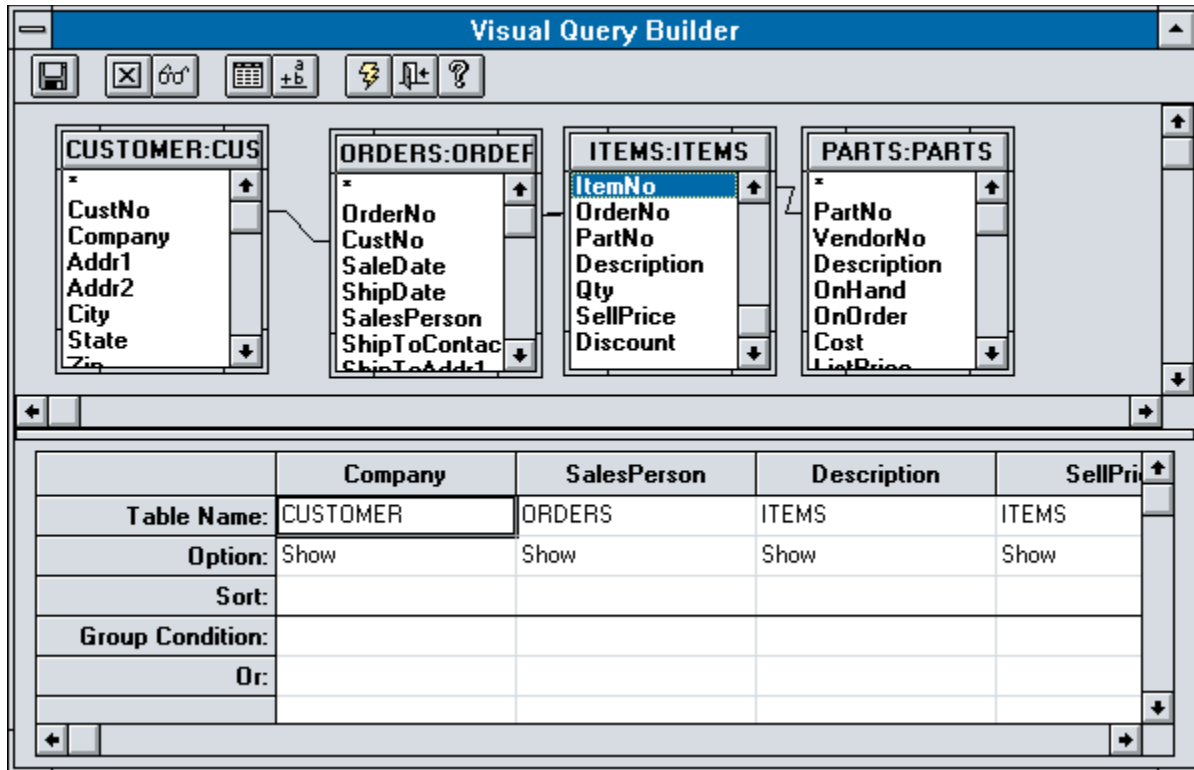


Delphi Client/Server includes native SQL Link drivers for Oracle, Sybase, Informix, and InterBase.

Smooth scaling

Delphi provides the easy path to client/server. Transparent local SQL development is easy with the built-in Local InterBase Server, which enables you to rapidly develop high-performance ANSI-92 compliant applications for standalone systems.

The transition from Delphi to Delphi Client/Server is a quick and easy process requiring no additional coding. So now you can instantly begin developing professional client/server applications using external database hosts.

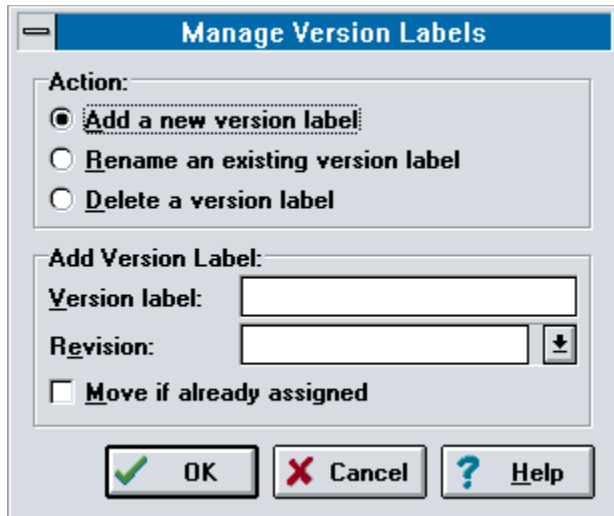


With Delphi Client/Server you can quickly and easily create sophisticated queries, automatically generating corresponding SQL code.

Accelerate into client/server

When you want to create high-performance client/server applications that access remote SQL database servers, you want **Delphi Client/Server**.

Delphi Client/Server includes the integrated Borland SQL Links 2.5 which incorporates a comprehensive set of high-performance **native drivers** that interact directly with Oracle, Sybase, MS SQL Server, Informix, and InterBase servers, for easy development and **unlimited royalty-free deployment across servers**. You also get the Local InterBase Deployment Kit so you can distribute the Local InterBase Server with your applications royalty-free.



Delphi Client/Server allows teams of developers to work together with integrated source code check-in, check-out and version control management, simplifying the complex client/server development process.

Integrated support for **team development** with check-in, check-out and version control is included. The **Visual Query Builder** allows you to graphically set up complex database queries, and instantly generate the appropriate SQL commands. And the Visual Component Library source code is included with Delphi Client/Server to give you a headstart on your applications.

ReportSmith 2.5 SQL version supports a wide range of server formats, and provides graphing, tabulation, and charting options.

And all of your Delphi Client/Server applications can be deployed royalty-free.

If you need to access corporate data on servers, you need Delphi Client/Server.

Fast track to Windows 95

Delphi applications developed for the Windows 3.1 operating environment will also run under Windows 95 and Windows NT. Upgrading them to full 32-bit performance simply involves a **single-click recompile** with the forthcoming Windows 95 version of Delphi. No rewriting of code is necessary!

"***** -- Excellent"
PC/Computing
February 1995

Delphi Client/Server Includes:

- The complete feature set found in Delphi
- NEW! SQL Links 2.5 - High-performance native drivers for Oracle, Sybase, MS SQL Server, Informix, and InterBase; heterogeneous joins using both local and remote SQL data, and updateable SQL queries
- Unlimited royalty-free distribution across servers
- Local InterBase Deployment Kit
- Team development with check-in, checkout, and version control
- Visual Query Builder

- ReportSmith 2.5 SQL version, award-winning report writing tool
 - Visual Component Library source code
 - Royalty-free EXEs
-

Delphi Specifications

Optimizing Native Code Compiler

- Compiles at over 350,000 lines per minute*
- Create fast standalone EXEs with no runtime interpreter Dynamic Link Library (DLL)
- Applications run up to 10 to 20 times faster than interpreted pcode
- Create DLLs that work with C++, dBASE, Paradox, Visual Basic, PowerBuilder, and others
- Access to all Windows API functions and messages
- Optimized case statements, sets, 32-bit math operations, string and file routines, and more
- Automatic built-in MAKE facility
- Smart Linker removes unused objects and code
- Built-in assembler for tuning performance

Integrated Development Environment

- Integrated visual form designer
- Two-Way-Tools automatically synchronize code and visual representations
- Object Inspector allows visual customization of components without writing code
- Built-in tools for alignment, scaling, and tab order
- ObjectBrowser displays object hierarchy, units, globals, and code references
- Project Manager displays all files and forms
- Fully customizable environment
- Open environment for adding your own tools, experts, components, and Property Editors

Visual Component Library (VCL)

- Over 75 reusable components
- Support for the latest Microsoft systems technologies including OLE 2.0, DDE, VBXs, DLLs, MAPI, and ODBC
- Standard components for menus, buttons, masked edit fields, panels, graphics, notebook tabs, grids, outlines, list boxes, and more
- Visual Data Objects for accessing databases, tables, queries, reports, SQL stored procedures, data-aware grids, navigators, and more
- "Live" design-time data access
- Extend the VCL with third-party libraries or with your own objects created with Delphi
- Database Field Editor
- Standard dialog objects
- System objects for accessing OLE 2.0 servers, DDE, multimedia and file, and directory lists
- Support for MDI, printing, and graphics
- 2-D and 3-D charts with included ChartFX control
- Compatible with hundreds of VBX controls
- Includes sample objects with source code
- VCL source code available separately

Object Pascal Language

- Structured, object-oriented language
- Supports inheritance, polymorphism, and encapsulation
- Control over privacy with Public, Private, Protected, and Published reserved words

- Create components with properties and events
- Use inheritance to customize any object
- Runtime type information and object persistence
- Automatic, extensible exception handling
- Support for open arrays, user-defined types, objects, and pointers
- Support for delegation and class references
- Separate compilation of units and DLLs
- Over 150 library routines
- WinCRT unit for creating standard Pascal "console" programs
- Compiles Borland Pascal 7.0 for Windows code

Powerful Editing

- Full-featured BRIEF-style editing
- Unlimited undo and redo
- No limit on file size
- Macro record and playback
- Column block marking
- Regular expression (GREP-style) search
- Customizable Color Syntax Highlighting
- Selectable editor keystrokes

Integrated Debugging

- Integrated GUI Debugger
- Conditional breakpoints and watchpoints
- Call stack view for tracing code execution
- Evaluate and modify expressions and variables
- WinSight Windows message trace utility
- WinSpector postmortem analysis tool
- Compatible with Turbo Debugger for Windows (available separately)

Borland Database Engine

- High-performance engine with native drivers for dBASE, Paradox, and Local InterBase Server
- Fully scalable support for migrating applications from desktop to client/server
- Royalty-free deployment of database engine
- Includes Database Desktop for managing database aliases as well as creating and restructuring tables
- ODBC support for Access, Btrieve, Excel, DB2, AS/400, Ingres, HP ALBASE/SQL, and gateways like IBM DDCS/2, Micro Decisionware and Sybase Net-gateway. (available separately)

Local InterBase 4.0 Server

- High-performance ANSI SQL-92 compliant
- Ideal for "off-line" development and single-user applications
- Computed fields
- Outer joins and join expressions
- Complex data including Binary Large Objects (BLOBs) and multidimensional arrays
- Advanced features including stored procedures, triggers, and constraints
- Fully scalable to InterBase on NT, NetWare, and UNIX platforms
- Local InterBase Server Deployment Kit available

ReportSmith 2.5

- Award-winning database reporting and query tool
- Features "live" report writing

- Adaptive data access for any size database
- Prebuilt report templates and styles
- Multilevel sorting
- Custom group specifications
- Onscreen Print Preview mode
- Free distribution of ReportSmith runtime module
- Fully compatible with ReportSmith SQL edition

Documentation and Help

- Extensible gallery of application templates and experts
- Over 5Mb of on-line help, with Interactive Tutors
- Five manuals: *Delphi User's Guide*, *Component Writer's Guide*, *Database Application Developer's Guide*, *Creating Reports*, and *InterBase User's Guide*
- Delphi Client/Server includes the above five manuals plus: *InterBase Language Reference Guide* and *InterBase Data Definition Guide*

Minimum System Requirements

- Intel 386-based PC or higher
- Microsoft Windows 3.1 or later, 100%-compatible version
- 6Mb of extended memory or higher, 8Mb for Client/Server
- 30Mb hard disk space, 50Mb for Delphi Client/Server
- CD-ROM drive (3.5" disks available separately)

Networks Supported

Any Microsoft Windows 3.1 - compatible network, including OS/2 2.1, Novell NetWare, Windows for Workgroups 3.11, and Windows NT 3.11.

*Pentium 90MHz InterSolv PVCS 5.1 or later required

Borland International's World Wide Offices

[Contents](#)

[Delphi factsheet](#)

[Borland offices](#)

[Your first Delphi program](#)

Borland International is dedicated to providing service and support to our customers, wherever they may be.

Choose the first letter of the country you would like contact information for:

[A](#) • [B](#) • [C](#) • [D](#) • [E](#) • [F](#) • [G](#) • [H](#) • [I](#) • [J](#) • [K](#) • [L](#) • [M](#) • [N](#) • [O](#) • [P](#) • [Q](#) • [R](#) • [S](#) • [T](#) • [U](#) • [V](#) • [W](#) • [X](#) • [Y](#) • [Z](#)

- **Argentina**

Borland Latin America
100 Borland Way
Scotts Valley, CA, 95066
USA
Contact: ,Sales Manager
Phone: +1 408-431-4162
Fax: +1 408-431-4113

- **Australia**

Borland International (AUST) Pty Ltd.
Locked Bag 84
Lane Cove, N.S.W. 2066
AUSTRALIA
Tel: (61) 02-9911-1000
Fax: (61) 02-9911-1011

- **Austria**

Borland International (Germany) GmbH
Monzastrasse 4c
63225 Langen
Germany
Phone: +49 6103 9790
Fax: +49 6103 979 292

- **Belgium**

Borland Netherlands B.V.
De Cuserstraat
Postbox 17876
1008 EB Amsterdam
Netherlands
Phone: +31 020 540 5400
Fax: +31 020 646 2620

- **Bolivia**

Borland Latin America
100 Borland Way
Scotts Valley, CA, 95066
USA
Contact: ,Sales Manager
Phone: +1 408-431-4162
Fax: +1 408-431-4113

- **Brazil**

Borland Latin America
100 Borland Way
Scotts Valley, CA, 95066
USA
Contact: ,Sales Manager
Phone: +1 408-431-4162
Fax: +1 408-431-4113

- **Bulgaria**

Borland France (ROE, Southern Europe, Middle East)
2 Rue Maurice Hartman
92137 Issy-les-Moulineaux
Paris
France
Phone: +33 1 4123 1122
Fax: +33 1 4123 1199

- **Canada**

Borland Canada
5001 Yonge Street
Suite 1400, North York, Ontario M2N 6P6
Canada
Phone: +1 416 229 6000
Fax: +1 416 229 6123

- **Chile**

Borland Latin America
100 Borland Way
Scotts Valley, CA, 95066
USA
Contact: ,Sales Manager
Phone: +1 408-431-4162
Fax: +1 408-431-4113

- **China**

Borland Taiwan Ltd.
7F-4, 207, Tun Hua N. Road
Taipai, Taiwan
Phone:+886 2 718 6627
Phone: +886 2 719 0758

- **Colombia**

Borland Latin America
100 Borland Way
Scotts Valley, CA, 95066
USA
Contact: ,Sales Manager
Phone: +1 408-431-4162
Fax: +1 408-431-4113

- **Cuba**

Borland Latin America
100 Borland Way
Scotts Valley, CA, 95066
USA
Contact: ,Sales Manager

Phone: +1 408-431-4162

Fax: +1 408-431-4113

- **Czech Republic**

Borland SRO

Tynsaky Dvur 10

PRAHA 1, 110 00

Czech Republic

Phone: +42 2 232 52 52

Fax: +42 2 24.81.27 .53

- **Denmark**

Borland Netherlands B.V.

De Cuserstraat

Postbox 17876

1008 EB Amsterdam

Netherlands

Phone: +31 020 540 5400

Fax: +31 020 646 2620

- **Ecuador**

Borland Latin America

100 Borland Way

Scotts Valley, CA, 95066

USA

Contact: ,Sales Manager

Phone: +1 408-431-4162

Fax: +1 408-431-4113

- **Egypt**

Borland France (ROE, Southern Europe, Middle East)

2 Rue Maurice Hartman

92137 Issy-les-Moulineaux

Paris

France

Phone: +33 1 4123 1122

Fax: +33 1 4123 1199

- **El Salvador**

Borland Latin America

100 Borland Way

Scotts Valley, CA, 95066

USA

Contact: ,Sales Manager

Phone: +1 408-431-4162

Fax: +1 408-431-4113

- **Finland**

Borland Netherlands B.V.

De Cuserstraat

Postbox 17876

1008 EB Amsterdam

Netherlands

Phone: +31 020 540 5400

Fax: +31 020 646 2620

- **France**

Borland France
2 Rue Maurice Hartman
92137 Issy-les-Moulineaux
Paris 92137
France
Phone: +33 1 41 23 11 50
Fax: +33 1 46 48 90 51

- **Germany**

Borland International (Germany) GmbH
Monzastrasse 4c
63225 Langen
Germany
Phone: +49 6103 9790
Fax: +49 6103 979 292

- **Greece**

Borland France (ROE, Southern Europe, Middle East)
2 Rue Maurice Hartman
92137 Issy-les-Moulineaux
Paris
France
Phone: +33 1 4123 1122
Fax: +33 1 4123 1199

- **Hong Kong, Korea, Malaysia, Singapore & Taiwan**

Borland (Hong Kong) Ltd.
Rm 2002 Cameron Commercial Center
458-468 Hennessy Road
Causeway Bay
HONG KONG
Contact: Paul Yan
Tel: (85) 2572-3238
Fax: (85) 2572-7002

- **Hungary**

Borland France (ROE, Southern Europe, Middle East)
2 Rue Maurice Hartman
92137 Issy-les-Moulineaux
Paris
France
Phone: +33 1 4123 1122
Fax: +33 1 4123 1199

- **Italy**

International Software Services-ISS Srl
Via Valera 31/16
20020 Arese (Mi)
Italy
Phone: +39 2 93582260
Fax: +39 2 93582280

- **Japan**

Borland Company Ltd.
Sasazuka South Building

1-64-8 Sasazuka
Shibuya-ku, Tokyo 151
JAPAN
Tel: (81) 03-5350-9380
Fax: (81) 03-5350-9369

- **Luxembourg**

Borland Netherlands B.V.
De Cuserstraat
Postbox 17876
1008 EB Amsterdam
Netherlands
Phone: +31 020 540 5400
Fax: +31 020 646 2620

- **Mexico**

Borland Latin America
100 Borland Way
Scotts Valley, CA, 95066
USA
Contact: ,Sales Manager
Phone: +1 408-431-4162
Fax: +1 408-431-4113

- **Netherlands**

Borland Netherlands B.V.
De Cuserstraat
Postbox 17876
1008 EB Amsterdam
Netherlands
Phone: +31 020 540 5400
Fax: +31 020 646 2620

- **Nicaragua**

Borland Latin America
100 Borland Way
Scotts Valley, CA, 95066
USA
Contact: ,Sales Manager
Phone: +1 408-431-4162
Fax: +1 408-431-4113

- **Norway**

Borland Netherlands B.V.
De Cuserstraat
Postbox 17876
1008 EB Amsterdam
Netherlands
Phone: +31 020 540 5400
Fax: +31 020 646 2620

- **Paraguay**

Borland Latin America
100 Borland Way
Scotts Valley, CA, 95066
USA

Contact: ,Sales Manager
Phone: +1 408-431-4162
Fax: +1 408-431-4113

- **Peru**

Borland Latin America
100 Borland Way
Scotts Valley, CA, 95066
USA
Contact: ,Sales Manager
Phone: +1 408-431-4162
Fax: +1 408-431-4113

- **Poland**

Borland France (ROE, Southern Europe, Middle East)
2 Rue Maurice Hartman
92137 Issy-les-Moulineaux
Paris
France
Phone: +33 1 4123 1122
Fax: +33 1 4123 1199

- **Portugal**

Borland France (ROE, Southern Europe, Middle East)
2 Rue Maurice Hartman
92137 Issy-les-Moulineaux
Paris
France
Phone: +33 1 4123 1122
Fax: +33 1 4123 1199

- **Romania**

Borland France (ROE, Southern Europe, Middle East)
2 Rue Maurice Hartman
92137 Issy-les-Moulineaux
Paris
France
Phone: +33 1 4123 1122
Fax: +33 1 4123 1199

- **Russia**

Borland France (ROE, Southern Europe, Middle East)
2 Rue Maurice Hartman
92137 Issy-les-Moulineaux
Paris
France
Phone: +33 1 4123 1122
Fax: +33 1 4123 1199

- **Saudi Arabia**

Borland France (ROE, Southern Europe, Middle East)
2 Rue Maurice Hartman
92137 Issy-les-Moulineaux
Paris
France
Phone: +33 1 4123 1122

Fax: +33 1 4123 1199

- **South Africa**

Borland Netherlands B.V.
De Cuserstraat
Postbox 17876
1008 EB Amsterdam
Netherlands
Phone: +31 020 540 5400
Fax: +31 020 646 2620

- **Spain**

Borland France (ROE, Southern Europe, Middle East)
2 Rue Maurice Hartman
92137 Issy-les-Moulineaux
Paris
France
Phone: +33 1 4123 1122
Fax: +33 1 4123 1199

- **Sweden**

Borland Netherlands B.V.
De Cuserstraat
Postbox 17876
1008 EB Amsterdam
Netherlands
Phone: +31 020 540 5400
Fax: +31 020 646 2620

- **Switzerland**

Borland International (Germany) GmbH
Monzastrasse 4c
63225 Langen
Germany
Phone: +49 6103 9790
Fax: +49 6103 979 292

- **Taiwan**

Borland Taiwan Ltd.
7F-4, 207, Tun Hua N. Road
Taipai, Taiwan
+886 2 718 6627
Phone: +886 2 719 0758

- **UK**

Borland International (UK) Ltd.
8 Pavilions
Ruscombe Business Park
Twyford, Berkshire RG10 9NN
UK
Phone: +44 1734 320022
Fax: +44 1734 320017

- **USA**

Borland International Inc.
100 Borland Way

Scotts Valley, CA, 95066
USA
Phone: +1 408-431-1000

- **Worldwide**

Borland International Inc.
100 Borland Way
Scotts Valley, CA, 95066
USA
Phone: +1 408-431-1000

Copyright © 1995 Borland International, Inc.

Borland Delphi Factsheet

[Contents](#)

[Delphi factsheet](#)

[Borland offices](#)

[Your first Delphi program](#)

Register your copy of Delphi Primer Edition!

[The fastest way to the fastest applications](#)

[RAD, from prototype to production](#)

[Visual Two-Way-Tools for Power Programming](#)

[Reuse components to maximize productivity](#)

[Integrated database support and reporting capabilities](#)

[The ultimate complementary tool](#)

[Object-Oriented Programming](#)

[Smooth scaling to client/server](#)

[Fast track to Windows 95](#)

[Delphi Client/Server Includes](#)

Delphi Specifications

- [Optimizing Native Code Compiler](#)
- [Visual Component Library](#)
- [Powerful Editing](#)
- [Borland Database Engine](#)
- [ReportSmith 2.5](#)
- [Minimum System Requirements](#)
- [Integrated Development Environment](#)
- [Object Pascal Language](#)
- [Integrated Debugging](#)
- [Local InterBase 4.0 Server](#)
- [Documentation & Help](#)
- [Networks Supported](#)

[New! Delphi 2.0 for Windows 95/NT Information!](#)

Borland Delphi Tutorial

[Contents](#)

[Delphi factsheet](#)


[Borland offices](#)

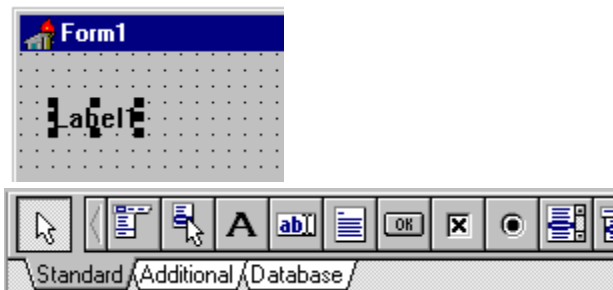
[Your first Delphi program](#)


Register your copy of Delphi Primer Edition!

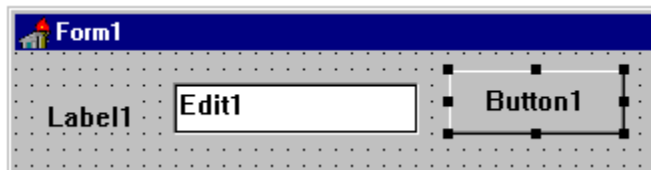
This help file will take you through creating your first application with Delphi - a simple edit control and list box example. The example will allow you to add items to a listbox by typing in to an edit control, and pressing a button to copy the contents of the edit control into the listbox.


Step 1 - Start Delphi Primer Edition

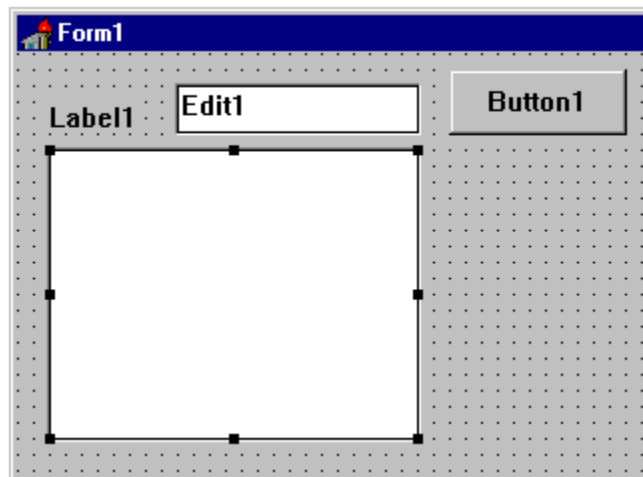
Step 2 - Select the Label component  and click on the form to add it to the form as below:



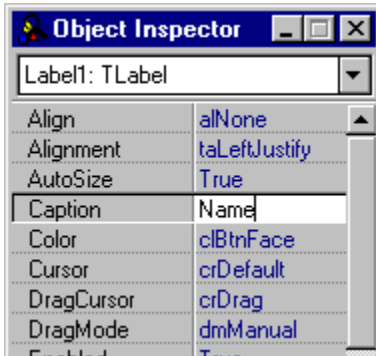
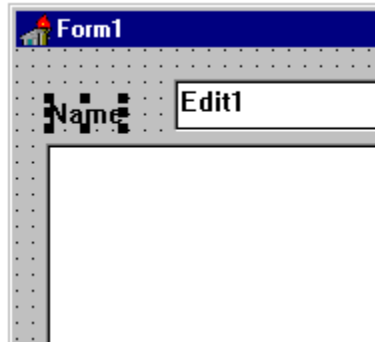
Step 3 - Select the Edit component  and add it to the form, then select the Button component and add it to the form. You should end up with:



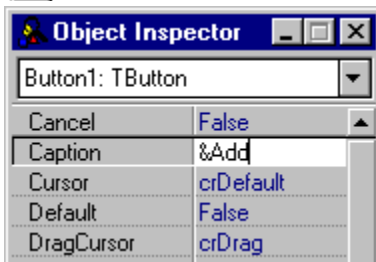
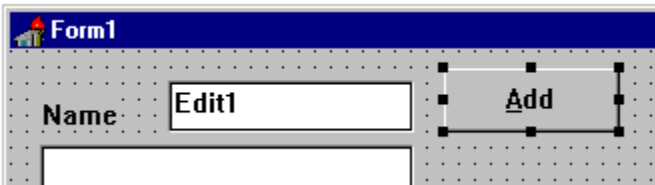
Step 4 - Select the Listbox component  and add it to the form by click and dragging out an area as below:



Step 5 - Select the Label component on the form by clicking on it, and change the Caption property in the Object Inspector to 'Name'.



Step 6 - Change the caption on the Button component (in the same manner as above) to '&Add'.



Step 7 - Now we need to add the code to copy the contents of the edit control into the listbox. Double click on the button, and type the following:

```
listbox1.items.add(edit1.text);
```

remembering to type the semicolon at the end.

Step 8 - Click the run button on the toolbar  and your application will compile and run!

Congratulations, you have created your first Delphi Windows application!

Delphi 2.0 for Windows 95/NT

[Contents](#)

[Delphi factsheet](#)

[Borland offices](#)

[Your first Delphi program](#)

Register your copy of Delphi Primer Edition!

Only Delphi 2.0 combines a high-performance 32-bit native-code compiler, powerful database programming tools and drag-and-drop visual components.

Performance

NEW! High-performance 32-bit optimizing native code compiler

Delphi's optimizing 32-bit native code compiler gives you the fastest way to the fastest applications. Your applications result in royalty free, standalone executable files for rapid deployment. No runtime interpreter DLLS necessary! For Delphi users, a simple recompile can increase performance up to 300-400%. Compared to interpreted P-code, applications run 40-50x faster. The new optimized linker makes EXEs up to 20-25% smaller. Other optimizations to the new 32-bit enabled code include: register optimizations, call stack overhead elimination, loop induction variables, pentium safe fdiv, and common subexpression removal.

Full code compatibility

No matter where your Windows based applications reside today, Delphi supplies the complete solution: stay with Windows 3.1, or migrate to a high powered 32-bit development environment on Windows95 or NT. Delphi's code compatibility from 16 bit up to 32-bit lets you protect your application investments while moving to new operating systems. Most code recompiles with no changes. To ease migration, each version of Delphi 2.0 includes the current 16-bit version of Delphi for Windows 3.1.

NEW! True 32-bit Development

Because Delphi 2.0 is a native code 32-bit compiler, you gain powerful performance benefits, faster applications, long filenames, unicode support, multi-threading, and complete access to the Win32 API. There's more available memory because the compiler runs in a 32-bit flat address space, completely eliminating the limitations associated with a 16-bit segmented architecture like Windows 3.1. You can declare arrays, strings, records and other data structures to be as large as you like, up to 2 gigabytes in size! The size is limitless because there are no more 64K barriers!

Easier code sharing with other Windows applications

Because of Delphi's native code compiler, you can create reusable DLLs that work with C++, dBASE, Paradox, Visual Basic, PowerBuilder and other Windows applications. Delphi's component based architecture lets you seamlessly integrate DLLs, OCX controls and OLE Automation servers into your Windows programs. Delphi 32 is built around the same high performance back-end compiler technology as Borland C++, with the benefit of allowing customers to generate .OBJ files and maintain closer integration of C++ or Delphi applications. Programmers can leverage existing work because the common backend lets them share code between Delphi and C or C++.

Object Oriented Component Architecture

Delphi lets you exploit the power of Object Oriented programming to create robust, efficient applications. Build your own components with Delphi's proven object oriented component architecture. Because Delphi 2.0 is a completely object-oriented environment, integration of OLE controls (OCX) is seamless. Use, customize or subclass components to fit you development needs, all from within the Delphi environment.

Productivity / Ease of Use

NEW! Visual Component Library (VCL32):

Delphi 2.0 includes an enhanced implementation of the Visual Component Library, containing approximately 100 handy components that developers “drag and drop” to create sophisticated Windows applications. VCL32 includes full encapsulation of the Windows 95 user interface elements (Tree Views, Trackbars, sliders, progress bars, Toolbars, Rich Edit, List Views, Image Lists header and status bar controls, etc), along with many additional components. These additional components complement the existing tabbed notebooks, data grids and multimedia tools to help you build sophisticated applications and move you from prototype to production quickly.

NEW! Visual Form Inheritance

Visual Form Inheritance gives you the power of object oriented programming in an easy to use visual tool. Visual Form Inheritance centralizes changes, makes code easier to maintain, and reduces turn-around time for new features. A key strength of Delphi is its proven architecture for object oriented computing and reusability; using inherited forms extends this model to create flexible applications that rapidly adjust to changes in production environments.

NEW! Easier to understand Error messages

The compiler now gives a much clearer, english language, indication of the problems with better diagnostic messages on syntactic errors. Simpler error messages make Delphi easier for programmers who are new to Object Pascal. The easier to understand error messages include many common syntactic errors like forgotten semi-colons. These messages provide a smooth transition for programmers using Delphi to complement their existing development language.

Multi-error compile with Hints and Warnings

The new multi-error architecture helps programmers resolve errors faster. Using a hot-key, programmers can jump to and fix multiple problems in a single compile. The new compiler even catches logic errors, like empty loops, uninitialized pointers and unused variables that result from ambiguous or incorrect code. This makes it easier to find bugs before they cause problems, and to verify large programs for correctness.

Enhanced Database Controls

NEW! Data Aware Controls

Delphi 2.0 adds new controls to its comprehensive suite of data aware components. Designed for fast and flexible programming, new dataaware controls include: a variety of lookup and listbox capabilities to show your users exactly the information you want - while underlying tables remain free to update and display.

Enhanced DBGRID

The new custom dbgrid offers codeless support for quick searching and automatic lookup fields. Create multiple custom views to the same data with the DBGrid column editors.

NEW! 32-bit Borland Database Engine

Delphi 2.0 is built on a new 32-bit Borland Database Engine. This flexible database engine scales smoothly to client server while providing transparent data sharing between applications. With features like a new Query Engine, improved dBASE integration, BCD support for financial applications and low-level API support, BDE forms a solid foundation for all your database applications.

Improved Database Support

NEW! Database Explorer

The Database Explorer provides a graphical way of managing all your database demands, it supports the creation and modification of tables, indices and aliases. It is an integrated database schema and content management utility tailored to the needs of professional database developers.

Multi Object Grid

Showing detailed views of your data has never been easier. Delphi's new multi object grid lets you decide whether data appears in rows or individual panels. Panel views support multiple dropdowns, checkboxes, and memo fields. As with the

dbgrid, the multi object grid supplies the user with codeless support for quick searching and automatic lookup fields.

Windows 95 and NT System Support

Leverage the advantages of Windows 95 and NT

Delphi 2.0 moves rapid application development into the 32-bit world. With a suite of new Windows 95 components, you can design elegant Windows95 logo compliant applications. In addition to 32-bit support for long file names, multi-threading and the Win95 API, Delphi includes a complete suite of Windows 95 controls: TreeViews, Header controls, Status Bars, progress meters and more.

Delphi Primer Registration

[Contents](#)

[Delphi factsheet](#)

[Borland offices](#)

[Your first Delphi program](#)

To register Delphi Primer Edition with Borland, please run the REGISTER.EXE program, and follow the instructions.

The file produced can then be sent to us in one of three ways:

Email to: delphi_primer@ddialog.demon.co.uk

Fax to: 0800 454066

Post to: Borland International
FREEPOST RG1571
Twyford
Berkshire
RG10 8BR

