

Contents

Files

- [Open Media File](#)
- [Programming the Media Center](#)
- [Close the Media File](#)
- [Exit Media Center](#)

Devices

- [Media Center](#)
- [CD Player](#)
- [New Device](#)

File Specific Devices

- [Animation](#)
- [MIDI-Player](#)
- [Picture Viewer](#)
- [WAV-Player](#)

Playback

- [Start](#)
- [Stop](#)
- [Pause](#)
- [Previous Track](#)
- [Next Track](#)
- [Wind Back](#)
- [Wind Forward](#)
- [Load / Eject Media](#)
- [Change Time Mode](#)
- [Change Playback Mode](#)

Settings

- [Desktop](#)
- [Wavetable-Synthesis-Parameter](#)
- [Animation Parameters](#)
- [Picture Viewer Parameters](#)

You can get to the menus of the CERES Media Center clicking on the main window with the right hand mouse button or via the system menu.

The Plus Button

When you click on this button, your file will be automatically saved under a different name a different name or the program will attempt to open a file with a new name. The new file name is put together as follows:

New file name = old file name + a number.

If the number of characters now exceeds 8, then the old file name will be correspondingly shortened. If the old file name already finishes with a number, then this number will be increased by 1 and the letters in the name reduced if necessary.

The first character in the file name will always be treated as a letter even if it is a number.

The Minus Button

When you click on this button, your file will be automatically saved under a different name or the program will attempt to open a file with a new name. The new file name is put together as follows:


New file name = old file name + a number.


If the number of characters now exceeds 8, then the old file name will be correspondingly shortened. If the old file name already finishes with a number, then this number will be decreased by 1 and the letters in the name reduced if necessary. Negative numbers may be used here.

The first character in the file name will always be treated as a letter, even when it is a number.

The Delete Button

When you operate this button you can delete the file shown at File name. So the unwanted versions of your file,

which had been saved by operating the  or

 buttons may be simply and easily deleted.

The Ok - Button

By clicking once on this button the program will execute the dialogues function and close the dialogue.

The Cancel Button

By clicking once on this button you will close the dialogue without executing its function.

The Help Button

By clicking on this button the programs help function will display the help text according to this dialogue.

File Name

Here you have to enter the name of the file to be opened or saved. You may also specify a search pattern for the file list (e.g., *.PGM).

If the file name you enter is a sub directory of the current directory then the program will change to the sub directory. You can also use the command ".." for the next higher directory, "\" for the root directory, or you can specify the complete directory path e.g. "C:\CMC".

File Type

Here you can specify which files are to be shown in the file list.

Device Type

Here you can specify which device you want to program.

Path

The current directory is shown here. This can be changed by using the [directory list](#).

Directory List

The current directory-tree is shown here. You can change to any directory by double clicking on it with the left mouse button.

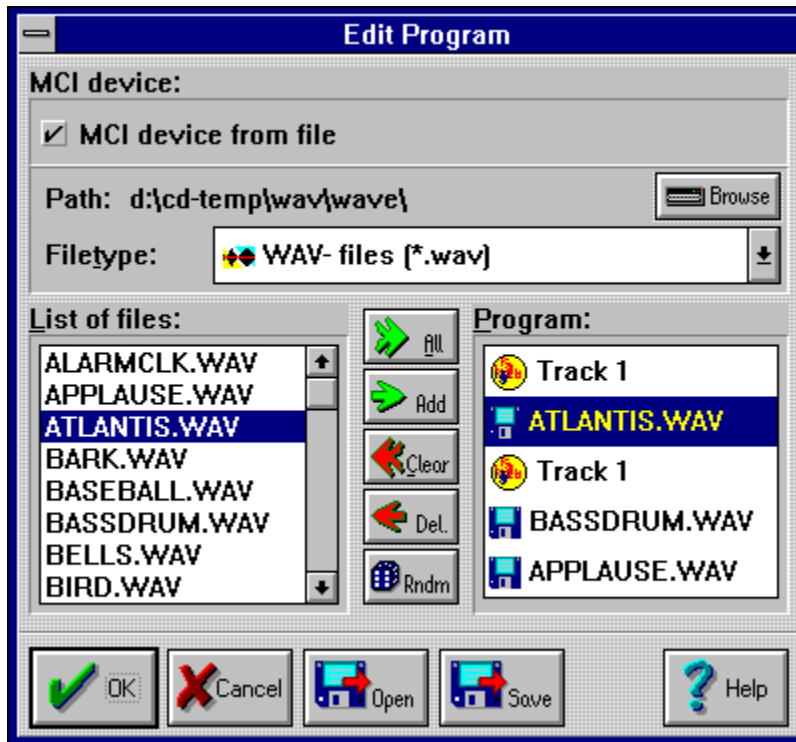
File List


This shows all the files in the current directories which correspond to File Type:

Drive List

Here you can select the drive whose files are to be shown.


Programming the Media Center




To create your own playlist, click on  in the main window, or use the **Program Media Center** command from the **File** menu. Here you also can load or save a playlist.

Programming the Media Center






To create your own playlist, click on  in the main window, or use the **Program Media Center** command from the **File** menu. Here you also can load or save a playlist.

Exit Media Center

You can exit the CERES Media Center by clicking on  in the main window or by using the **Exit** command from the **File** menu.

The Media - File - List

The Media-File-List contains all files of the current directory which correspond to the search pattern given under **File Type:** or the device specific entries for the current device. You can place these files into your playlist by using

the ,
 or
 buttons.


The Playlist

The playlist contains those files and device entries which are to be played back. The entries are in the same order they will be played back.


Der Knopf Alle

Mit dem Knopf  tragen Sie alle Dateien der Media-Datei-Liste in die Programmliste ein, in der Reihenfolge wie sie in der Dateiliste stehen, ein.


The Add Button

By clicking on  you enter the selected part of the Media-File-List into the Playlist at the current position.


The Clear Button

By clicking on  you will delete all entries from the Playlist.

The Delete Button


By clicking on  you will delete the current entry from the Playlist.

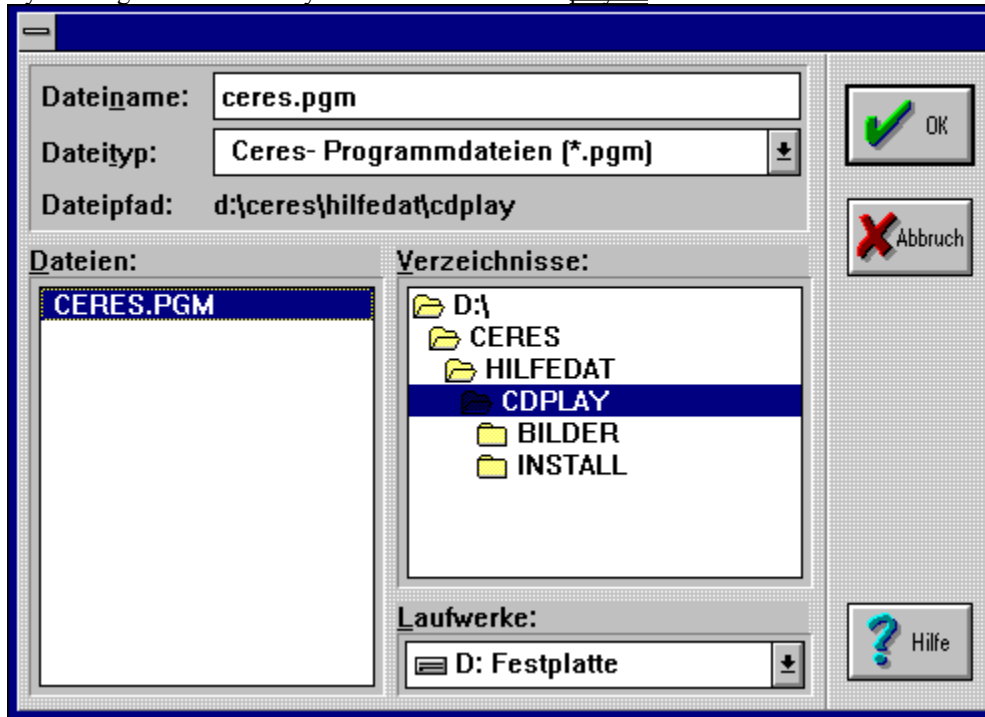
The Random Button

By clicking on  you will copy all entries from the Media-File-List into the Playlist in an random order.

The Save Button




By clicking on  you can save the current playlist.

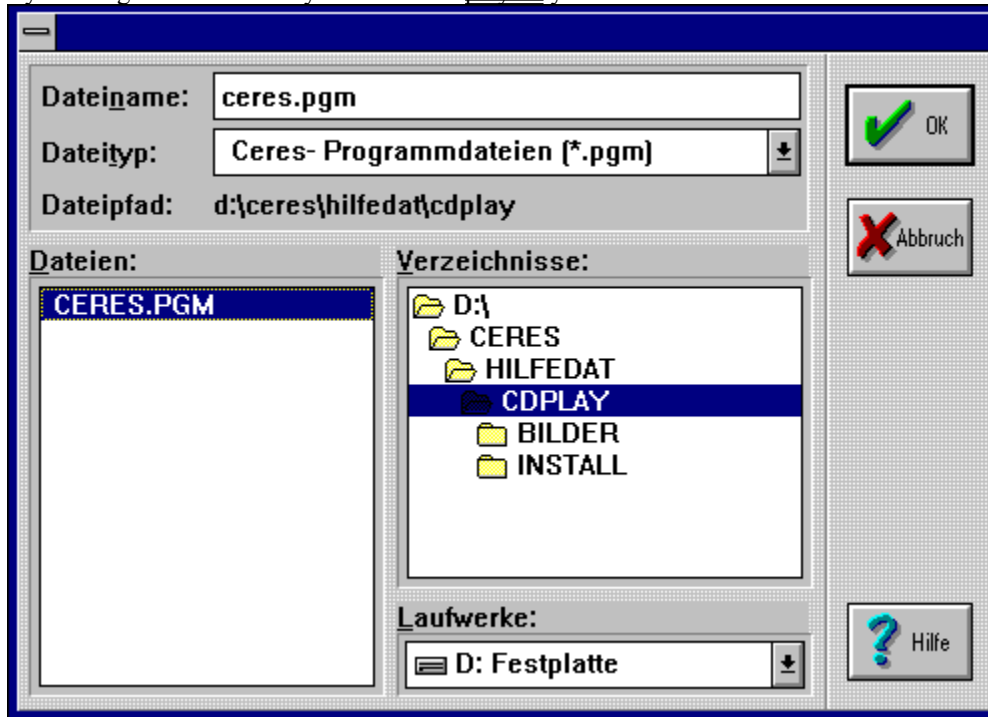


If you click on the button, the dialogue illustrated will appear. To learn more about its buttons and areas just click into the graphic.

The Load Button



By clicking on  you can load a playlist you have saved earlier.




If you click on the button, the dialogue illustrated will appear. To learn more about its buttons and areas just click into the graphic.


Start

To start Playback use the **Start** command from the **Playback** menu or click on . If you have selected **PLAY PROGRAM** as Playback Mode the CERES Media Center will start the playback of the current Playlist.


Pause

To pause the current playback use the **Pause** command from the **Playback** menu or click on  in the main window.


Continue

To continue a paused playback use the **Pause** command from the **Playback** menu again or click on .


Stop

To stop the current playback use the **Stop** command from the **Playback** menu or click on .


Previous Track

To make the previous track (the previous playlist-entry) the current track (current entry) use the **Previous Track** command from the **Playback** menu or click on  in the main window.


Next Track

To make the next track (the next playlist-entry) the current track (current entry) use the **Next Track** command from the **Playback** menu or click on  in the main window.

Wind Back

To wind the current track fast backward 10 seconds use the **Wind Back** command from the **Playback** menu or click on  in the main menu.


Wind Forward

To wind the current track fast forward 10 seconds use the **Wind Forward** command from the **Playback** menu or click on  in the main menu.


Eject / Load Media

To eject or load the current media (as far as this is possible) use the **Eject / Load Media** from the **Playback** menu.

Time Mode

To switch between the different Time Display Modes use the **Time Mode** command from the **Playback** menu or click on  in the main menu.

Playback Mode

To switch between the different Playback Modes use the **Playback Mode** command from the **Playback** menu or click on  in the main window.

MCI - Device from File

By using this switch you can decide, if you want to program a filespecific or devicespecific MCI-device. If the switch is on then you can select the kind of files you want to add to the playlist by using **File Type**..

If the switch is off, then you can select here the type of the device which tracks you want to add to the playlist. Under **Devicetype**: you can see all the devices, which are installed in your computer system.

Path

The directory which files are shown in the Media-File-List is shown here. You can change the directory by using the



button.

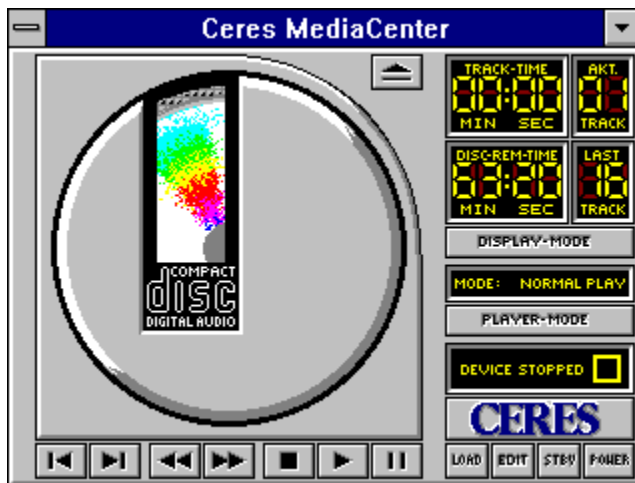
Browse



By using the dialogue illustrated you can change the directory which files are shown in the [Media-File-List](#).

CD-Player

Just click on the area you want to get explained!



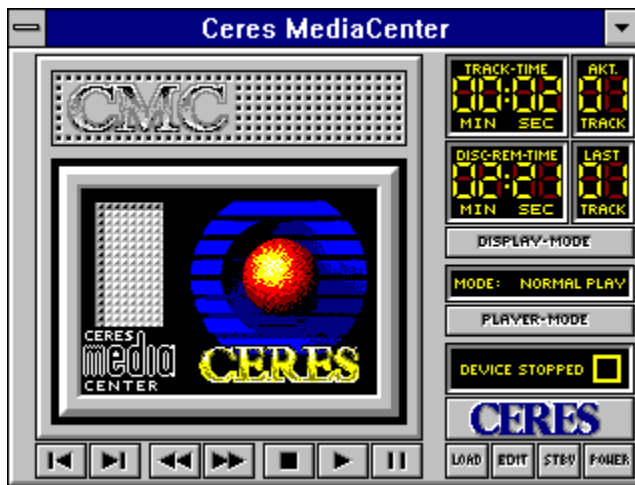
You can start the CERES Media Center directly as a CD-Player. You have to use **/CDAudio** as command line parameter. The CD-ROM drive has to be closed and an audio CD has to be inserted.

Example: `C:\CMC\CMC.EXE /CDAudio`

You can get to the menus of the CERES Media Center clicking on the main window with the right hand mouse button or via the system menu.

CERES Media Center

Just click on the area you want to get explained!



You can get to the menus of the CERES Media Center clicking on the main window with the right hand mouse button or via the system menu.

Animation - Player

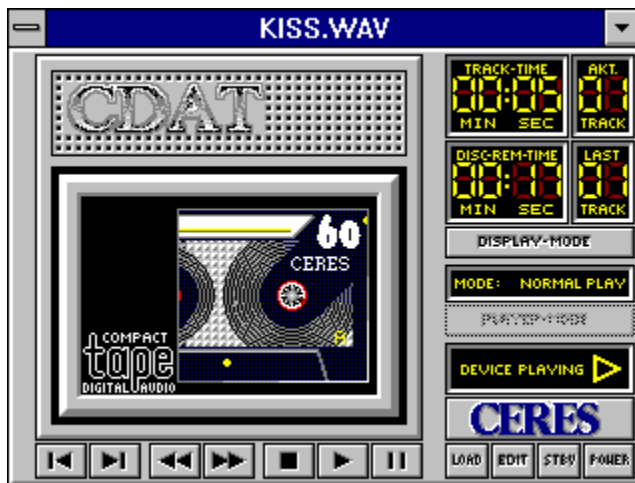
Just click on the area you want to get explained!



You can get to the menus of the CERES Media Center clicking on the main window with the right hand mouse button or via the system menu.

WAV Player

Just click on the area you want to get explained!



You can get to the menus of the CERES Media Center clicking on the main window with the right hand mouse button or via the system menu.

Picture Player

Just click on the area you want to get explained!



You can get to the menus of the CERES Media Center clicking on the main window with the right hand mouse button or via the system menu.

Midi-Player

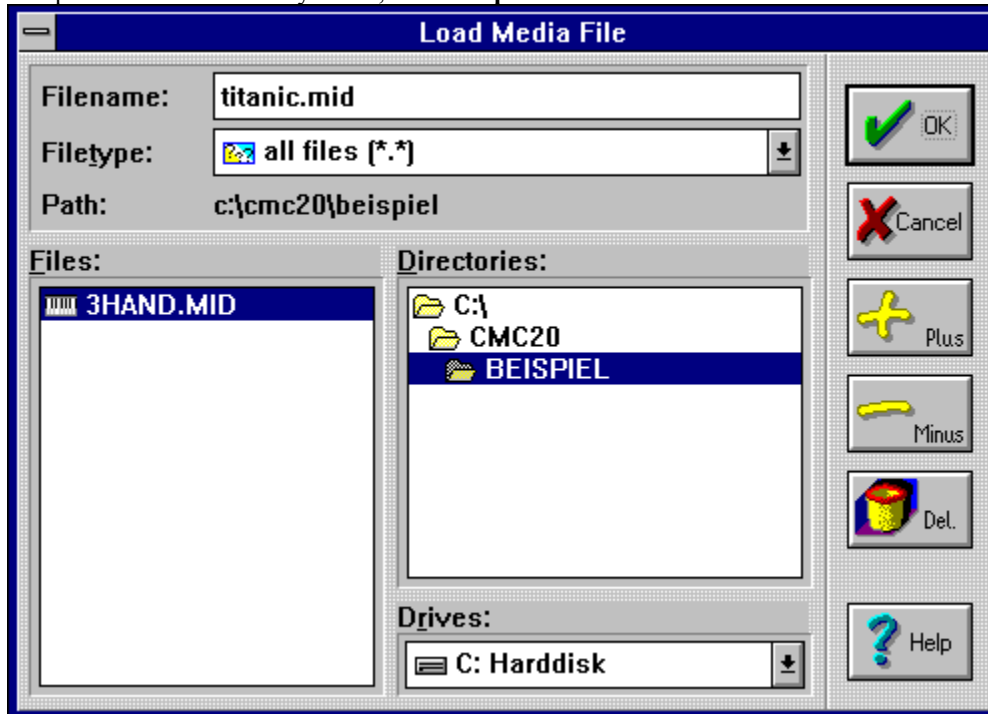
Just click on the area you want to get explained!



You can get to the menus of the CERES Media Center clicking on the main window with the right hand mouse button or via the system menu.

Open File

To open a file which already exists, use the **Open** command from the **File** menu or click on .



In this dialogue you can select the file which you want to open. You either have to enter the name of the file or click on the file name if it is listed in the file list (Files:).

The file list shows all files in the current directory which correspond to **File Type:**.

If the file you wish to open is not in the current directory the current directory is shown at **Path:** then you can change the directory using the directory list (Directories:).

If the file is on another drive then you can select this from the drive list (Drives:).

For further explanations click on the appropriate area in the illustration.

Close File

To close the current media file use the **Close** command from the **File** menu.

New Device

The CERES Media Center is able to recognise and handle MCI-devices. If you have installed a MCI-device which is not a file-specific-device (i.e. CD-Players) then the Media Center will enter its name into the device-list. You can access this device using the "**Name of the device**" command from the **Device** menu. If you want the Media Center to start as this device permanently then you have to give the name of the device as a command line parameter.

Example: C:\CMC\CMC.EXE /Gerätename

The CERES Media Center supports the following devices:

File-specific devices

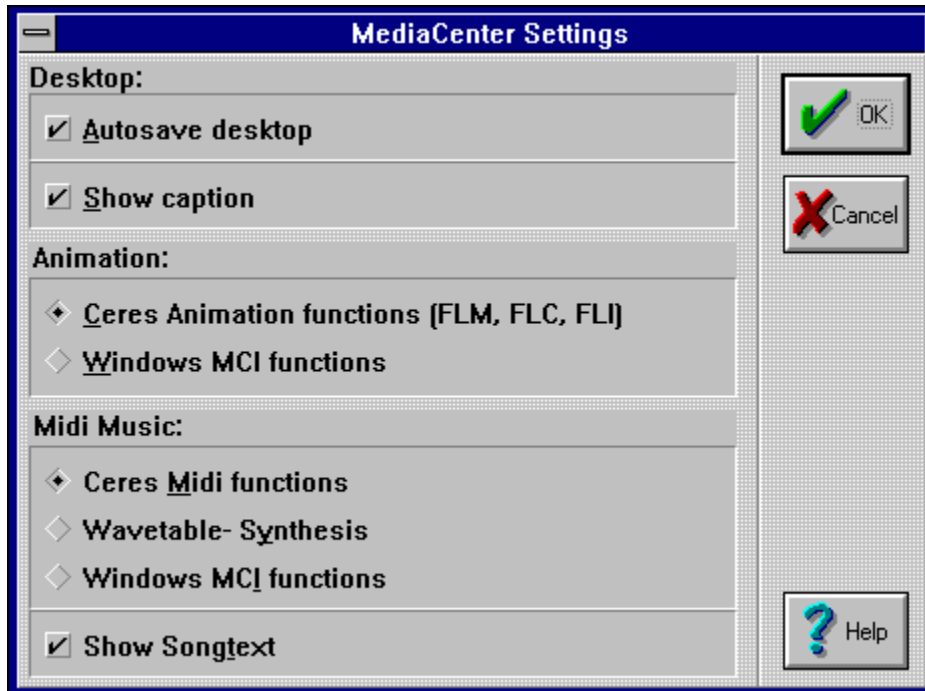
1. WaveAudio
2. Sequencer
3. Animation
4. AVIVideo

Device-specific MCI-devices

5. CDAudio
6. Overlay
7. DAT
8. VideoDisc
9. VCR

Desktop Settings

To change the settings for the CERES Media Centers Desktop use the **Desktop** command from the **Settings** menu.



AutoSave desktop: Here you can specify if the current settings shall be saved when exiting the Media Center or not.

Show Caption: Here you can specify if the Media Centers windows shall have a caption or not.

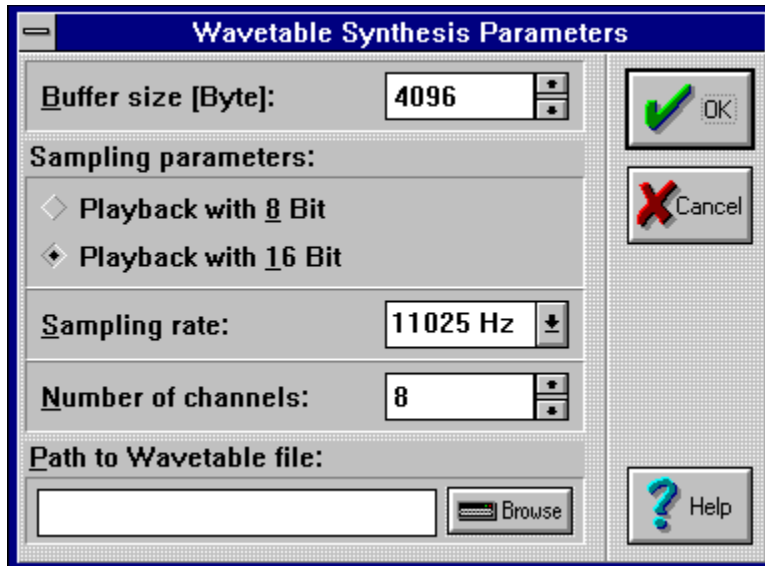
Animations: The CERES Media Center has its own procedures for FLM, FLI and FLC files. Here you can specify if they shall be used or not. We heavily recommend to use them.

Midi-Music: Here you can specify if the CERES Media Center shall use its own procedures, the built-in wavetable synthesis or the standard MCI function for midi-playback. We heavily recommend to use the Media Centers functions. To use the built-in wavetable synthesis you do not need a wavetable soundcard. All your soundcard needs is a channel for sample playback like the SoundBlaster 1.0 or higher.

Show Songtext: Here you can specify if the songtext contained in the midi-file shall be displayed during playback or not.

Wavetable-Synthesis Settings

To change the setting for the built-in wavetable-synthesis use the **Wavetable-Synthesis-Parameters** command from the **Settings** menu.



Buffer Size: Here you can set the length of the buffer that shall be used for calculating wave data.

Output with 8 oder 16 Bits: Here you can specify if the sample output shall be calculated with 8 or 16 bits. The 16bit-output has a much better quality but also consumes more processor-power.

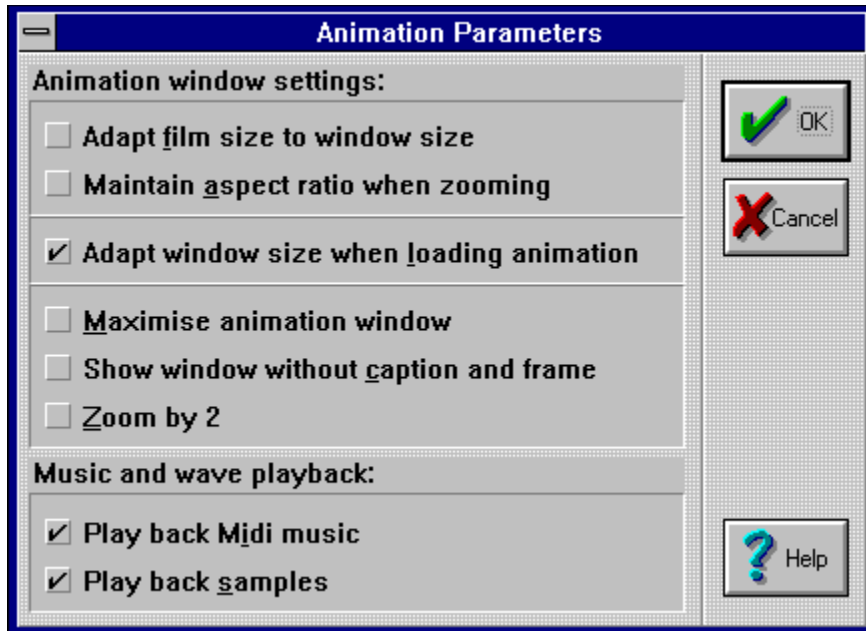
Sampling Rate: A higher sampling rate produces a higher output quality but also consumes more processor-power.

Number of Channels: The more channels you specify the more notes can be played back simultaneously but the more processor-power will be consumed during playback.

Path to Wavetable File: Here you can specify which file contains the wavetable instrument data.

Animation Parameters

To change the parameters for animation playback use the **Animation Parameters** command from the **Settings** menu.



Adapt film size to window size: If this switch is ON then the film will always be adapted to the playback window size.

Maintain Aspect Ratio: If this switch is active the the CERES Media Center will maintain the animations aspect ration during playback even when the playback window size will be changed.

Adapt Window Size When Loading Animation: If this switch is activ then the Media Center will fit the size of the animations playback window to the size of the animation at the beginning of the playback.

Maximise Animation Window: Here you can specify if the animation-playback window will start up maximised or not.

Show Window Without Caption And Frame: Here you can specify if the animation-playback window shall have the standard-windows elements caption and frame or not.

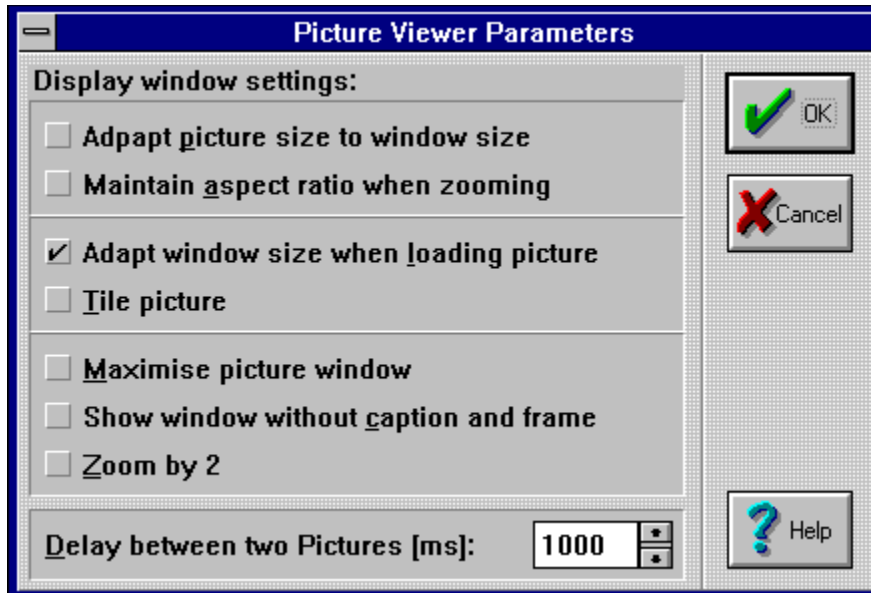
Zoom By 2: If this switch is on the animation will be zoomed automatically by factor 2. This function may decrease the playback speed dramatically.

Play Back Midi Music: Here you can specify if the midi-data contained in the animation shall be played back or not.

Play Back Samples: Here you can specify if the samples contained in the animation shall be played back or not.

Picture Viewer Parameters

To change the parameters for the picture viewer use the **Picture Viewer Parameters** command from the **settings** menu.



Adapt Picture Size to Window Size: If this switch is ON then the picture will always be adapted to the window size.

Maintain Aspect Ratio: If this switch is active the the CERES Media Center will maintain the pictures aspect ration during playback even when the playback window size will be changed.

Adapt Window Size When Loading Picture: If this switch is activ then the Media Center will fit the size of the pictures playback window to the size of the picture at the beginning of the playback.

Tile Picture: When this switch is on then the picture will be displayed repeatedly in both directions to fill the whole screen.

Maximise Picture Window: Here you can specify if the picture-playback window will start up maximised or not.

Show Window Without Caption And Frame: Here you can specify if the picture-playback window shall have the standard-windows elements caption and frame or not.

Zoom by 2: If this switch is on the picture will be zoomed automatically by factor 2.

Time Between Two Pictures: Here you can specify the time that the CERES Media Center shall delay the display of the next picture from the playlist.

Signature
