



Welcome to the *Image Gallery!*

The Image Gallery is a picture browser designed to view image files on your computer. You can view simultaneously up to 225 pictures in a single window. It supports bitmap, metafile and icon formats.

[Installation and distribution notes](#)

[Image Gallery in action](#)

[How To...](#)

[Image Gallery: tips](#)

[Other products](#)

Important: There are several bitmap formats, this product does not support all of them.

Options Dialog box

This dialog box enables customization of the Image Gallery environment.

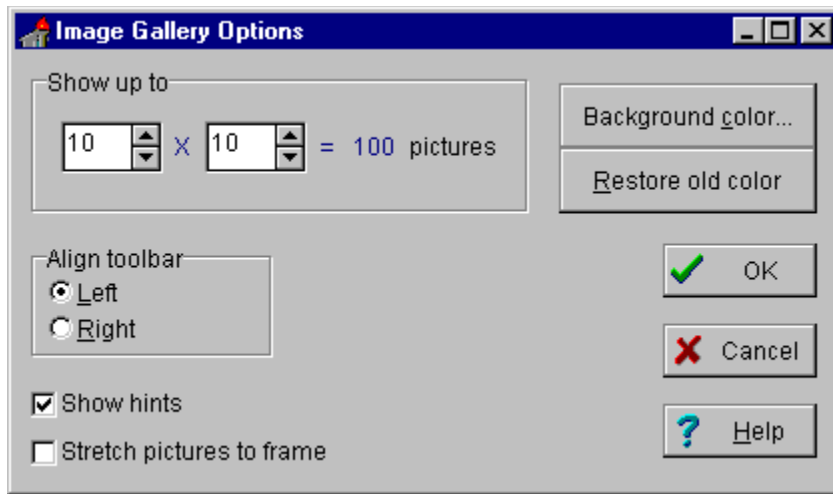


Image Gallery Tips

- If you click on an image, its filename will be selected in the file list box. In other words, the file list box traces the click.

- Double click on the picture to maximize it. To resize, double click again.

- Use right mouse button click to:

 - Move backward through browsing sequence

 - Copy the particular image onto the Clipboard (see note below, also)

 - Copy the picture path onto the Clipboard

 - Call Options dialog box.

Note: Since Windows doesn't have a format appropriate to .ICO files, icons can't be clipped to Clipboard.

Distribution notes

The Image Gallery is distributed in the following files:

Imgallery.exe Fully functional program file.
Imgallery.hlp This help file.

This product is distributed FREE. We don't ask money for this program, but we would appreciate it if you will fill in and send us a REGISTRATION FORM. This would give us the pleasure of being able to inform you about our new products. You may believe, they will be unique and exciting.

Installation

The installation process is very simple and easy. Place two the files listed above in any directory you like. The only requirement is you should keep both of them together in the same directory.

Shareware products of *Anet Inc.*

AnetHelpTool

The AnetHelpTool is an easy to learn and use WYSIWYG help authoring system. It creates RTF and help files (HC31.exe required). It has two modes: Runtime and Design. In the design mode you can create and edit your document. The runtime mode emulates real WinHelp environment. Even before compiling your document will look like a real help file. Extremely useful and extra-ordinarily low priced. (Shareware, \$75). Find AnetHelpTool on Compuserve, in the MS Basic Forum (VB Win-Apps/Misc)

Note: This help file was produced using AnetHelpTool system.

Search32

Search32 is an easy to use text retrieval program. It works similar to Find Fast from MS Office 32, but Search32 is more flexible, faster and constantly being improved. Before initiating a search you create index files (very fast and easy), then just type the words for your query. Search32 will find all files containing these words Immediately when you press <CR>. It will show a string of text containig your words. It creates indexes in many types of text files. Even html files! Try and be surprised! (Shareware, \$20). Search32 is available from Compuserve: forum PCAPP, lib 3, and Internet: <http://www.winsite.com/pc/win95/miscutil/search32.zip>

How To...

[... display pictures located in a specific directory](#)

First choose the directory from directory list box. All the pictures located in the specific directory will be shown in a file list box. To display them just press the Display button.

[... display pictures located in a specific directory, including subdirectories](#)

In a directory list box choose the directory and press Recurse button. All files found will be shown in a file list box. To view them press Display button.

[... display a particular picture maximized](#)

Double click on the picture. If the picture is too large to be shown full view in the window, press Stretch button to match to the window's size. To go back double click again or press Back button.

Saves all changes you made. The main window will be repainted to match the new settings.

The main window space will be equally divided into smaller windows according to this option. First digit is the number of small windows arranged horizontally, and the second stands for those arranged vertically. The smaller these digits, the greater each small window's size. You can simultaneously view as many pictures as the number calculated here. The Image Gallery enables you to change this number in the range from 1 to 225 (this number may be limited by the size of system resources on your computer).

This option enables you to customize color of background panel. This choice is also useful when browsing icons since they look different on different backgrounds because of their transparency.

Restores the color the main window had before the Option dialog box appeared.

Enables you to align the toolbar to left or to right side of the main window. If you change the toolbar alignment, the pictures on the main window will be repainted to fit the new toolbar alignment.

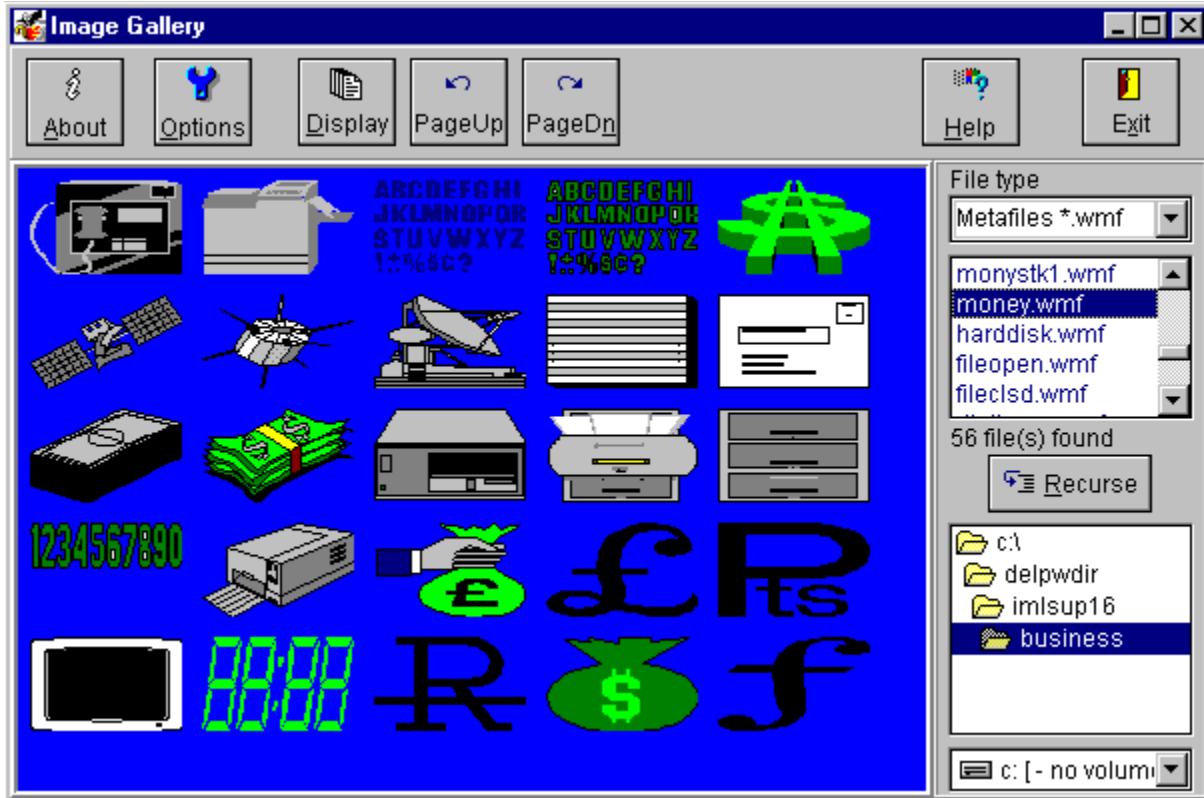
With this option checked, when your mouse cursor is on any image its filename will be shown in a text box as a hint.

With this option checked all the pictures in the main window will be shown stretched/shrunk to the size of a small window.

Closes the Option dialog without any changes in the settings.

Calls this page of the Image Gallery's help file.

Image Gallery in action



Shows the product and company information.

Calls Options dialog. Enables you to customize the Image Gallery environment.

Displays the very first set of images. The number of images in the set is regulated by Options dialog box settings.

Displays the previous set of images. The number of images in the set is regulated by Options dialog box settings.

Displays next (or successive) set of images. The number of images in the set is regulated by Options dialog box settings.

Calls this help file.

Quits the program.

Searches in the current directory and in all its subdirectories for the files specified in the File Type field.

Stretches the image to fit the frame. Take into account that the stretched image may look distorted.

Returns from full view to the main window.

Specifies the type(s) of files to be shown.

File list box. Contains all the files found in the current directory (as a result of a simple search) or in all its subdirectories (recursive search), which matched the File Type field.

Main window. It is a panel the images have to be shown on. Double click on a particular image to view it full view. When viewing icons, the main window's background color imposes an influence on the way the images look. You can customize the background color in Options dialog box.

Directory list box. Defines the initial directory for search of files of type(s) specified in a File Type field.

Indicates the number of files found as a result of a search.

Drive list box.

