

Visual Basic Menus

{ewc HLP95EN.DLL,DYNALINK,"See Also":"vamnuContextMenusC;vbproBooksOnlineJumpTopic"} {ewc
HLP95EN.DLL,DYNALINK,"Specifics":"vamnuContextMenusS"}

Visual Basic has two types of menus, built-in and shortcut.

Built-in Menus

Built-in menus appear on the menu bar across the top of the Visual Basic window. Each menu contains commands that relate to the menu name. For example, the Format menu contains commands used for formatting your form. Some of the commands have submenus that contain more specific commands. For example, the Toolbars command on the View menu has a submenu that contains the names of the toolbars and the Customize command. You can use the Customize command to modify the built-in menus or to add commands to the menu bar.

Shortcut Menus

Shortcut menus are menus containing frequently used commands that appear when you click the right mouse button or press SHIFT+F10.

Note To find information on a command on a menu, use the Search for Help On command on the Help menu and search for the name of the command.

Zoom Command

{ewc HLP95EN.DLL,DYNALINK,"See Also":"vacmdZoomCommandC;vbproBooksOnlineJumpTopic"} {ewc HLP95EN.DLL,DYNALINK,"Specifics":"vacmdZoomCommandS"}

Reduces or enlarges the display of the selected form. You can choose or type a magnification between 10 and 400 percent.

Only available on the UserForm toolbar.

Toolbar: A toolbar control consisting of a rectangular box with a light gray border. Inside the box, the text "100%" is displayed in a dark gray font. To the right of the text is a small, dark gray downward-pointing arrowhead, indicating a dropdown menu.

Definition Command (Shortcut Menu)

{ewc HLP95EN.DLL,DYNALINK,"See Also":"vacmdGoToDefinitionC;vbproBooksOnlineJumpTopic"} {ewc
HLP95EN.DLL,DYNALINK,"Specifics":"vacmdGoToDefinitionS"}

Displays the location in the Code window where the variable or procedure under the pointer is defined. If the definition is in a referenced library, it is displayed in the Object Browser.

Show Hidden Members Command (Object Browser Shortcut Menu)

{ewc HLP95EN.DLL,DYNALINK,"See Also":"vacmdShowHiddenMembersC;vbproBooksOnlineJumpTopic"} {ewc
HLP95EN.DLL,DYNALINK,"Specifics":"vacmdShowHiddenMembersS"}

Shows and hides the hidden members in the Object Browser for each class. Hidden members are members that are not intended for use by the programmer of the reusable object and are not normally visible in the Object Browser. They appear as light gray text.

Customize Command (Shortcut Menu)

{ewc HLP95EN.DLL,DYNALINK,"See Also":"vacmdCustomizeContextC;vbproBooksOnlineJumpTopic"} {ewc
HLP95EN.DLL,DYNALINK,"Specifics":"vacmdCustomizeContextS"}

Displays the Customize dialog box where you can add, delete, modify, or create custom toolbars.

Delete Watch Command (Shortcut Menu)

{ewc HLP95EN.DLL,DYNALINK,"See Also":"vacmdDeleteWatchContextC;vbproBooksOnlineJumpTopic"}
HLP95EN.DLL,DYNALINK,"Specifics":"vacmdDeleteWatchContextS"}

{ewc

Deletes the selected watch expression.

Find Whole Word Only Command (Object Browser Shortcut Menu)

{ewc HLP95EN.DLL,DYNALINK,"See Also":"vacmdFindWholeWordOnlyContextC;vbproBooksOnlineJumpTopic"} {ewc HLP95EN.DLL,DYNALINK,"Specifics":"vacmdFindWholeWordOnlyContextS"}

Allows you to search for occurrences that exactly match the word you typed into the Search Text box of the Object Browser.

Hide Command (Shortcut Menu)

{ewc HLP95EN.DLL,DYNALINK,"See Also": "vacmdHideContextC;vbproBooksOnlineJumpTopic"}
HLP95EN.DLL,DYNALINK,"Specifics": "vacmdHideContextS"}

{ewc

Hides the active window, project, folder, module, or the Toolbox.

Collapse Parent Command (Shortcut Menu)

{ewc HLP95EN.DLL,DYNALINK,"See Also":"vacmdCollapseParentContextC;vbproBooksOnlineJumpTopic"} {ewc HLP95EN.DLL,DYNALINK,"Specifics":"vacmdCollapseParentContextS"}

Shrinks the list of items in the Locals or Watch window to the parent item. When you collapse a list, the icon to the left of the expression changes from a minus sign (-) to a plus sign (+).

Properties Command (Shortcut Menu)

{ewc HLP95EN.DLL,DYNALINK,"See Also":"vacmdPropertiesContextC;vbproBooksOnlineJumpTopic"}
HLP95EN.DLL,DYNALINK,"Specifics":"vacmdPropertiesContextS"}

{ewc

Opens the Properties window for the selected item.

Toggle Commands (Shortcut Menu)

{ewc HLP95EN.DLL,DYNALINK,"See Also":"vacmdToggleContextC;vbproBooksOnlineJumpTopic"} {ewc
HLP95EN.DLL,DYNALINK,"Specifics":"vacmdToggleContextS"}


Breakpoint Sets or removes a breakpoint at the current line.

Bookmark Displays or removes a bookmark at the active line in the Code window.

Move Command (Shortcut Menu)

{ewc HLP95EN.DLL,DYNALINK,"See Also":"vacmdMoveShortcutC;vbproBooksOnlineJumpTopic"} {ewc
HLP95EN.DLL,DYNALINK,"Specifics":"vacmdMoveShortcutS"}

Depending on whether a window or the Toolbox is active when you select the Move command, one of the following actions occurs:

- Changes the pointer to a  so you can move the active window to another location.
- Displays the Page Order dialog box where you can change the order of the pages in your Toolbox.
You can move the selected page to the left or right of the other pages.

Comment Block and Uncomment Block Commands

{ewc HLP95EN.DLL,DYNALINK,"See Also":":vbcmdCommentBlockC;vbproBooksOnlineJumpTopic"}
HLP95EN.DLL,DYNALINK,"Specifics":":vbcmdCommentBlockS"}

{ewc

Adds and removes the comment character, an apostrophe, for each line of a selected block of text. If you do not have text selected and you choose the Comment Block or Uncomment Block command, the comment character is added or removed in the line where the pointer is located.

Comment Block Adds the comment character to each line of a selected block of text.

Uncomment Block Removes the comment character from each line of a selected block of text.

Properties Command (Object Browser Shortcut Menu)

{ewc HLP95EN.DLL,DYNALINK,"See

Also": "vacmdPropertiesCommandObjectBrowserShortcutMenuC;vbproBooksOnlineJumpTopic"} {ewc

HLP95EN.DLL,DYNALINK,"Specifics": "vacmdPropertiesCommandObjectBrowserShortcutMenuS"}

Displays the Member Options dialog box where you type a description of the custom member and give it a Help Context ID and Help File name.

Only available for items containing Basic code.

Help Command (Shortcut Menu)

{ewc HLP95EN.DLL,DYNALINK,"See Also":"vacmdHelpShortcutC;vbproBooksOnlineJumpTopic"} {ewc HLP95EN.DLL,DYNALINK,"Specifics":"vacmdHelpShortcutS"}

Displays the help topic related to the item selected when the Help command is chosen.

View Object and View Code Commands (Shortcut Menu)

{ewc HLP95EN.DLL,DYNALINK,"See Also":"vacmdViewObjectShortcutC;vbproBooksOnlineJumpTopic"}
HLP95EN.DLL,DYNALINK,"Specifics":"vacmdViewObjectShortcutS"}

{ewc

Allows you to view either the Design window or the Code window.

View Object Displays or activates the selected item.

View Code Displays or activates the Code window for a currently selected object.

Dockable Command (Shortcut Menu)

{ewc HLP95EN.DLL,DYNALINK,"See Also":"vacmdDockingViewCommandShortcutC;vbproBooksOnlineJumpTopic"}
{ewc HLP95EN.DLL,DYNALINK,"Specifics":"vacmdDockingViewCommandShortcutS"}

Toggles the ability to dock the active window on and off.

A window is docked when it is attached or "anchored" to one edge of the screen, application window, or another dockable window. When you move a dockable window, it "snaps" to the location. A window is not dockable when you can move it anywhere on the screen and leave it there.

Group Members Command (Object Browser Shortcut Menu)

```
{ewc HLP95EN.DLL,DYNALINK,"See Also":"vacmdGroupMembersShortcutC;vbproBooksOnlineJumpTopic"} {ewc  
HLP95EN.DLL,DYNALINK,"Specifics":"vacmdGroupMembersShortcutS"}
```

Toggles the Members of pane between an alphabetical list of the members of the selected class and a list grouped by the member type.

View Definition Command (Object Browser Shortcut Menu)

```
{ewc HLP95EN.DLL,DYNALINK,"See Also":"vacmdViewDefintionShortcutC;vbproBooksOnlineJumpTopic"}  
HLP95EN.DLL,DYNALINK,"Specifics":"vacmdViewDefintionShortcutS"}
```

{ewc

Takes you to the definition of the selected member.

Size Command (Shortcut Menu)

{ewc HLP95EN.DLL,DYNALINK,"See Also":"vacmdSizeShortcutC;vbproBooksOnlineJumpTopic"}
HLP95EN.DLL,DYNALINK,"Specifics":"vacmdSizeShortcutS"}

{ewc

Changes the pointer so that you can resize the active window or Toolbox.

Copy Command (Object Browser Shortcut Menu)

{ewc HLP95EN.DLL,DYNALINK,"See Also":"vacmdCopyOBShortcutC;vbproBooksOnlineJumpTopic"}
HLP95EN.DLL,DYNALINK,"Specifics":"vacmdCopyOBShortcutS"}

{ewc

Copies the text for the selected class or member to the Clipboard.

Wildcard Characters used in String Comparisons

{ewc HLP95EN.DLL,DYNALINK,"See Also":"vadlgWildcardCharactersC"} {ewc
HLP95EN.DLL,DYNALINK,"Specifics":"vadlgWildcardCharactersS"}

Built-in pattern matching provides a versatile tool for making string comparisons. The following table shows the wildcard characters you can use with the Like operator and the number of digits or strings they match.

Character(s) in <i>pattern</i>	Matches in <i>expression</i>
?	Any single character
*	Zero or more characters
#	Any single digit (0-9)
[<i>charlist</i>]	Any single character in <i>charlist</i>
[! <i>charlist</i>]	Any single character not in <i>charlist</i>

A group of one or more characters (*charlist*) enclosed in brackets ([]) can be used to match any single character in *expression* and can include almost any characters in the ANSI character set, including digits. In fact, the special characters opening bracket ([), question mark (?), number sign (#), and asterisk (*) can be used to match themselves directly only if enclosed in brackets. The closing bracket (]) can't be used within a group to match itself, but it can be used outside a group as an individual character.

In addition to a simple list of characters enclosed in brackets, *charlist* can specify a range of characters by using a hyphen (-) to separate the upper and lower bounds of the range. For example, using [A-Z] in *pattern* results in a match if the corresponding character position in *expression* contains any of the uppercase letters in the range A through Z. Multiple ranges can be included within the brackets without any delimiting. For example, [a-zA-Z0-9] matches any alphanumeric character.

Other important rules for pattern matching include the following:

- An exclamation mark (!) at the beginning of *charlist* means that a match is made if any character except those in *charlist* are found in *expression*. When used outside brackets, the exclamation mark matches itself.
- The hyphen (-) can be used either at the beginning (after an exclamation mark if one is used) or at the end of *charlist* to match itself. In any other location, the hyphen is used to identify a range of ANSI characters.
- When a range of characters is specified, they must appear in ascending sort order (A-Z or 0-100). [A-Z] is a valid pattern, but [Z-A] isn't.
- The character sequence [] is ignored; it's considered to be a zero-length string ("").

Close Command (Shortcut Menu)

{ewc HLP95EN.DLL,DYNALINK,"See Also":"vacmdCloseContextC;vbproBooksOnlineJumpTopic"}
HLP95EN.DLL,DYNALINK,"Specifics":"vacmdCloseContextS"}

{ewc

Closes the selected window.

Step Into, Step Over, and Step Out Commands (Debug Menu)


{ewc HLP95EN.DLL,DYNALINK,"See Also":"vbcmdStepInC;vbproBooksOnlineJumpTopic"} {ewc HLP95EN.DLL,DYNALINK,"Specifics":"vbcmdStepInS"}

Step Into Executes code one statement at a time.

When not in design mode, Step Into enters break mode at the current line of execution. If the statement is a call to a procedure, the next statement displayed is the first statement in the procedure.

At design time, this menu item begins execution and enters break mode before the first line of code is executed.

If there is no current execution point, the Step Into command may appear to do nothing until you do something that triggers code, for example click on a document.

Toolbar button: . Keyboard shortcut: F8.

Step Over Similar to Step Into. The difference in use occurs when the current statement contains a call to a procedure.

Step Over executes the procedure as a unit, and then steps to the next statement in the current procedure. Therefore, the next statement displayed is the next statement in the current procedure regardless of whether the current statement is a call to another procedure. Available in break mode only.


Toolbar button: . Keyboard shortcut: SHIFT+F8.

Step Out Executes the remaining lines of a function in which the current execution point lies. The next statement displayed is the statement following the procedure call. All of the code is executed between the current and the final execution points. Available in break mode only.

Toolbar button: . Keyboard shortcut: CTRL+SHIFT+F8.

Run to Cursor Command (Debug Menu)

{ewc HLP95EN.DLL,DYNALINK,"See Also":":vbcmdRunToCursorC;vbproBooksOnlineJumpTopic"} {ewc
HLP95EN.DLL,DYNALINK,"Specifics":":vbcmdRunToCursorS"}

When your application is in design mode, use Run To Cursor to select a statement further down in your code where you want execution to stop. Your application will run from the current statement to the selected statement and the current line of execution margin indicator, , appears in the Margin Indicator bar.

You can use this command, for example, to avoid stepping through large loops.
Keyboard shortcut: CTRL+F8.

Toggle Breakpoint Command (Debug Menu)

{ewc HLP95EN.DLL,DYNALINK,"See Also":"vbcmdToggleBreakpointC;vbproBooksOnlineJumpTopic"}
HLP95EN.DLL,DYNALINK,"Specifics":"vbcmdToggleBreakpointS"}

{ewc

Sets or removes a breakpoint at the current line. You can't set a breakpoint on lines containing nonexecutable code such as comments, declaration statements, or blank lines.


A line of code in which a breakpoint is set appears in the colors specified in the Editor Format tab of the Options dialog box.

Toolbar shortcut: . Keyboard shortcut: F9.

Clear All Breakpoints Command (Debug Menu)

{ewc HLP95EN.DLL,DYNALINK,"See Also":"vbcmdClearAllBreakpointsC;vbproBooksOnlineJumpTopic"} {ewc HLP95EN.DLL,DYNALINK,"Specifics":"vbcmdClearAllBreakpointsS"}

Removes all breakpoints in your project. Your application may still interrupt execution, however, if you have set a watch expression or selected the Break on All Errors option in the General tab of the Options dialog box. You cannot undo the Clear All Breakpoints command.

Toolbar shortcut: . Keyboard shortcut: CTRL+SHIFT+F9.

Set Next Statement Command (Debug Menu)

{ewc HLP95EN.DLL,DYNALINK,"See Also":"vbcmdSetNextStatementC;vbproBooksOnlineJumpTopic"}
HLP95EN.DLL,DYNALINK,"Specifics":"vbcmdSetNextStatementS"}

{ewc

Sets the execution point to the line of code you choose. You can set a different line of code to execute after the currently selected statement by selecting the line of code you want to execute and choosing the Set Next Statement command or by dragging the Current Execution Line margin indicator to the line of code you want to execute.

Using Set Next Statement, you can choose a line of code located before or after the currently selected statement. When you run the code, any intervening code isn't executed. Use this command when you want to rerun a statement within the current procedure or to skip over statements you don't want to execute. You can't use Set Next Statement for statements in different procedures.

Toolbar shortcut: . Keyboard shortcut: CTRL+F9.

Show Next Statement Command (Debug Menu)

{ewc HLP95EN.DLL,DYNALINK,"See Also":"vbcmdShowNextStatementC;vbproBooksOnlineJumpTopic"} {ewc HLP95EN.DLL,DYNALINK,"Specifics":"vbcmdShowNextStatementS"}

Highlights the next statement to be executed. Use the Show Next Statement command to place the cursor on the line that will execute next.

Available only in break mode.

Toolbar shortcut: .

Add Watch Command (Debug Menu)

{ewc HLP95EN.DLL,DYNALINK,"See Also":"vbcmdAddWatchC;vbproBooksOnlineJumpTopic"} {ewc
HLP95EN.DLL,DYNALINK,"Specifics":"vbcmdAddWatchS"}


Displays the Add Watch dialog box in which you enter a watch expression. The expression can be any valid Basic expression. Watch expressions are updated in the Watch window each time you enter break mode.

Toolbar shortcut: .

Edit Watch Command (Debug Menu)

{ewc HLP95EN.DLL,DYNALINK,"See Also":"vbcmdEditWatchC;vbproBooksOnlineJumpTopic"} {ewc
HLP95EN.DLL,DYNALINK,"Specifics":"vbcmdEditWatchS"}

Displays the Edit Watch dialog box in which you can edit or delete a watch expression. Available when the watch is set even if the Watch window is hidden.

Toolbar shortcut: . Keyboard shortcut: CTRL+W.

Quick Watch Command (Debug Menu)

{ewc HLP95EN.DLL,DYNALINK,"See Also":"vbcmdInstantWatchC;vbproBooksOnlineJumpTopic"} {ewc HLP95EN.DLL,DYNALINK,"Specifics":"vbcmdInstantWatchS"}

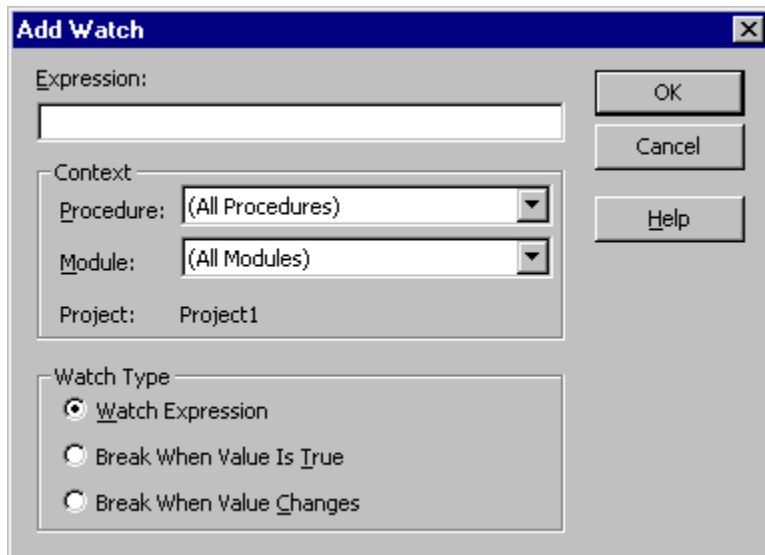
Displays the Quick Watch dialog box with the current value of the selected expression. Use this command to check the current value of a variable, property, or other expression for which you have not defined a watch expression. Select the expression from either the Code window or the Immediate window, and then choose the Quick Watch command. To add a watch expression based on the expression in the Quick Watch dialog box, choose the Add button.

Toolbar shortcut: . Keyboard shortcut: SHIFT+F9.

Add Watch Dialog Box

{ewc HLP95EN.DLL,DYNALINK,"See Also":"vbproBooksOnlineJumpTopic;vbrgnAddWatchC"}
HLP95EN.DLL,DYNALINK,"Specifics":"vbrgnAddWatchS"}

{ewc



Use to enter a watch expression. The expression can be a variable, a property, a function call, or any other valid Basic expression. Watch expressions are updated in the Watch window each time you enter break mode or after execution of each statement in the Immediate window.

You can drag selected expressions from the Code window into the Watch window.

Important When selecting a context for a watch expression, use the narrowest scope that fits your needs. Selecting all procedures or all modules could slow down execution considerably, since the expression is evaluated after execution of each statement. Selecting a specific procedure for a context affects execution only while the procedure is in the list of active procedure calls, which you can see by choosing the Call Stack command on the View menu.

Dialog Box Options

Expression Displays the selected expression by default. The expression is a variable, a property, a function call, or any other valid expression. You may enter a different expression to evaluate.

Context Sets the scope of the variables watched in the expression.

- Procedure — Displays the procedure name where the selected term resides (default). Defines the procedure(s) in which the expression is evaluated. You may select all procedures or a specific procedure context in which to evaluate the variable.
- Module — Displays the module name where the selected term resides (default). You may select all modules or a specific module context in which to evaluate the variable.
- Project — Displays the name of the current project. Expressions can't be evaluated in a context outside of the current project.

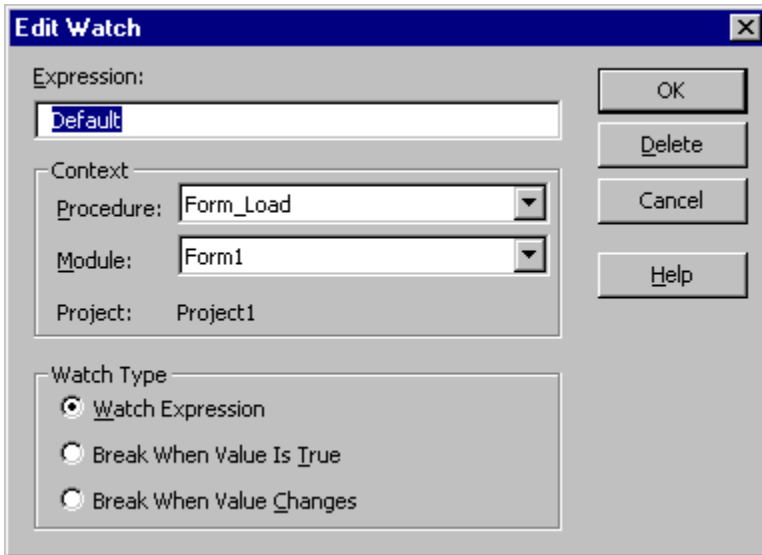
Watch Type Determines how Visual Basic responds to the watch expression.

- Watch Expression — Displays the watch expression and its value in the Watch window. When you enter break mode, the value of the watch expression is automatically updated.
- Break When Value Is True — Execution automatically enters break mode when the expression evaluates to true or is any nonzero value (not valid for string expressions).
- Break When Value Changes — Execution automatically enters break mode when the value of

expression changes within the specified context.

Edit Watch Dialog Box

{ewc HLP95EN.DLL,DYNALINK,"See Also":"vbproBooksOnlineJumpTopic;vbrgnEditWatchC"} {ewc HLP95EN.DLL,DYNALINK,"Specifics":"vbrgnEditWatchS"}



Use to delete or edit the context or type of a watch expression.

Important When selecting a context for a watch expression, use the narrowest scope that fits your needs. Selecting all procedures or all modules could slow down execution considerably, since the expression is evaluated after execution of each statement. Selecting a specific procedure for a context affects execution only while the procedure is in the list of active procedure calls.

Dialog Box Options

Expression Displays the selected expression by default. The expression is a variable, a property, a function call, or any other valid expression. You may enter a different expression to evaluate.

Context Sets the scope of the variables watched in the expression.

- Procedure — Displays the procedure name where the selected term resides (default). Defines the procedure(s) in which the expression is evaluated. You may select all procedures or a specific procedure context in which to evaluate the variable.
- Module — Displays the module name where the selected term resides (default). You may select all modules or a specific module context in which to evaluate the variable.
- Project — Displays the name of the current project. Expressions can't be evaluated in a context outside of the current project.

Watch Type Determines how Visual Basic responds to the watch expression.

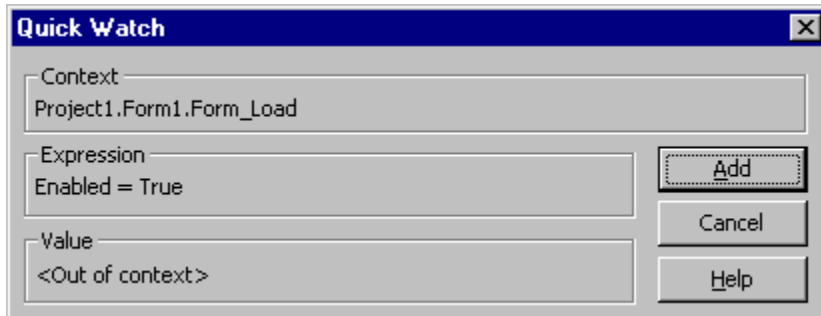
- Watch Expression — Displays the watch expression and its value in the Watch window. When you enter break mode, the value of the watch expression is automatically updated.
- Break When Value Is True — Execution automatically enters break mode when the expression evaluates to true or is any nonzero value (not valid for string expressions).
- Break When Value Changes — Execution automatically enters break mode when the value of expression changes within the specified context.

Delete Deletes the watch expression.

Quick Watch Dialog Box

{ewc HLP95EN.DLL,DYNALINK,"See Also":"vbproBooksOnlineJumpTopic;vbrgnInstantWatchC"}
HLP95EN.DLL,DYNALINK,"Specifics":"vbrgnInstantWatchDialogBoxS"}

{ewc



Displays the current value of a selected expression. This functionality is useful when debugging your code if you want to see the current value of a variable, property, or other expression.

Dialog Box Options

Current Context Lists the names of the project, module, and procedure where the watch expression resides.

Expression Shows the selected expression.

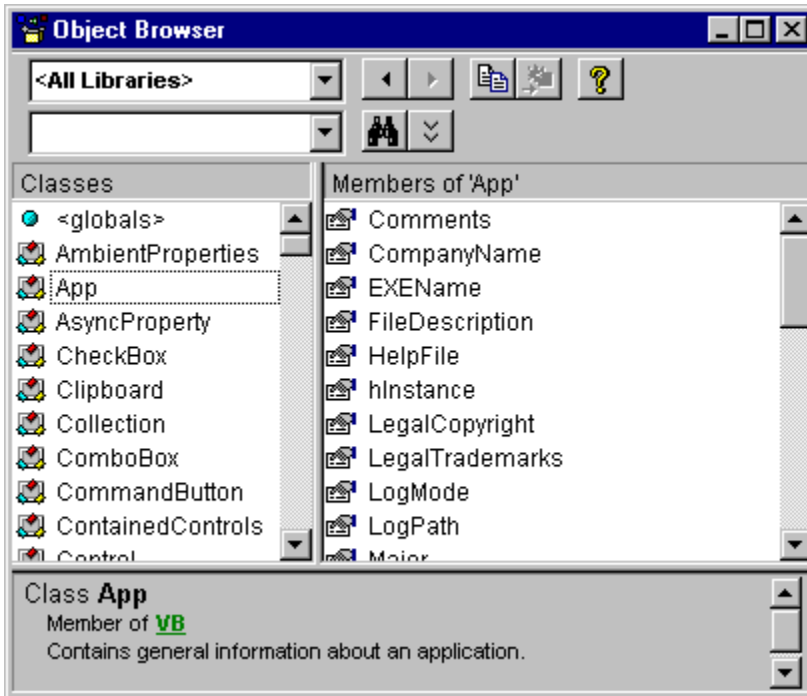
Value Shows the value of the selected expression. The current value isn't displayed if the expression context isn't within a procedure listed in the Calls dialog box.

Add Adds the expression to the Watch window.

Object Browser

{ewc HLP95EN.DLL,DYNALINK,"See Also":"vbproBooksOnlineJumpTopic;vbrgnObjectBrowserC"}
HLP95EN.DLL,DYNALINK,"Specifics":"vbrgnObjectBrowserS"}

{ewc



Displays the classes, properties, methods, events, and constants available from object libraries and the procedures in your project. You can use it to find and use objects you create, as well as objects from other applications.

You can get help for the Object Browser by searching for Object Browser in Help.

Window Elements

Project/Library Box

Displays the currently referenced libraries for the active project. You can add libraries in the References dialog box. <All Libraries> allows all of the libraries to be displayed at one time.

Search Text Box

Contains the string that you want to use in your search. You can type or choose the string you want. The Search Text box contains the last 4 search strings that you entered until you close the project. You can use the standard Visual Basic wildcards when typing a string.

If you want to search for a whole word, you can use the Find Whole Word Only command from the shortcut menu.

Go Back Button



Allows you to go back to the previous selection in the Classes and Members of lists. Each time you click it you move back one selection until all of your choices are exhausted.

Go Forward Button



Allows you to repeat your original selections in the Classes and Members of lists each time you click it, until you exhaust the list of selections.

Copy to Clipboard Button



Copies the current selection in the Members of list or the Details pane text to the clipboard. You can then paste the selection into your code.

Show Definition Button



Moves the cursor to the place in the Code window where the selection in the Members of list or the Classes list is defined.

Help Button



Displays the online Help topic for the item selected in the Classes or the Members of list. You can also use F1.

Search Button



Initiates a search of the libraries for the class or property, method, event or constant that matches the string you typed in the Search Text box, and opens the Search Results pane with the appropriate list of information.

Show/Hide Search Results Button



Opens or hides the Search Results pane. The Search Results pane changes to show the search results from the project or library chosen in the Project/Library list. Search results are listed alphabetically from A to Z.

Search Results List

Displays the library, class, and member that corresponds to the items that contain your search string. The Search Results pane changes when you change the selection in the Project/Library box.

Classes List

Displays all of the available classes in the library or project selected in the Project/Libraries box. If there is code written for a class, that class appears in bold. The list always begins with <globals>, a list of globally accessible members.

If you select a Class and do not specify a member, you will get the default member if one is available. The default member is identified by an asterisk (*) or by the default icon specific to the member.

Members of List

Displays the elements of the class selected in the Classes pane by group and then alphabetically within each group. Methods, properties, events, or constants that have code written for them appear bold. You can change the order of this list with the Group Members command on the Object Browser shortcut menu.

Details Pane

Shows the definition of the member. The Details pane contains a jump to the class or library to which the element belongs. Some members have jumps to their parent class. For example, if the text in the Details pane states that Command1 is declared as a command button type, clicking on command button takes you to the Command Button class.

You can copy or drag text from the Details pane to the Code window.

Split Bar

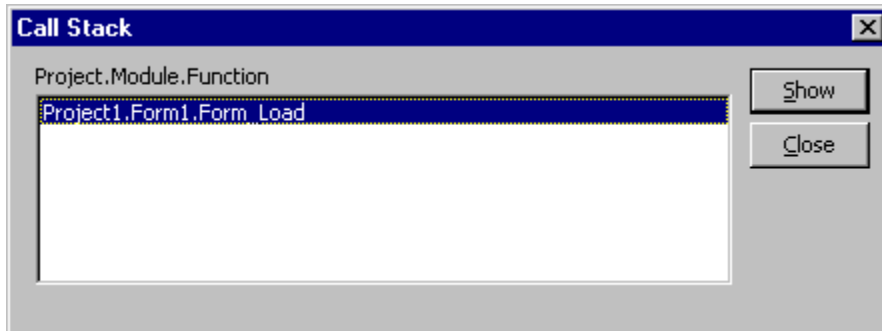
Splits the panes so that you can adjust their size. There are splits between the:

- Classes box and the Members of box.
- Search Results list and the Classes and Members of boxes.
- Classes and Members of boxes and the Details pane.

Calls Dialog Box

{ewc HLP95EN.DLL,DYNALINK,"See Also":"vbproBooksOnlineJumpTopic;vbrgnCallsDialogC"}
HLP95EN.DLL,DYNALINK,"Specifics":"vbrgnCallsDialogS"}

{ewc



Displays a list of currently active procedure calls during break mode. When executing code in a procedure, that procedure is added to a list of active procedure calls. Each time a procedure calls another procedure, it is added to the list. Called procedures are removed from the list when execution returns to the calling procedure. Procedures called from the Immediate window are also added to the calls list.

Dialog Box Options

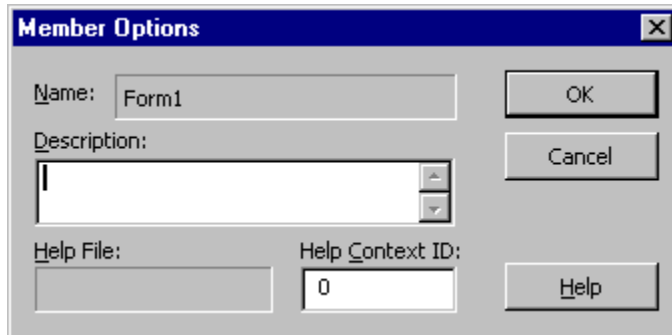
Project Module Function Lists the procedures.

Show Moves the insertion point to the location where the call was made and turns on the Call Stack indicator, ➡.

Member Options Dialog Box

{ewc HLP95EN.DLL,DYNALINK,"See Also":"vbproBooksOnlineJumpTopic;vbrgnMemberOptionsC"}
HLP95EN.DLL,DYNALINK,"Specifics":"vbrgnMemberOptionsS"}

{ewc



The screenshot shows a standard Windows-style dialog box titled "Member Options". It features a blue title bar with a close button (X) on the right. The dialog contains four input fields: "Name" (containing "Form1"), "Description" (empty), "Help File" (empty), and "Help Context ID" (containing "0"). To the right of these fields are three buttons: "OK", "Cancel", and "Help".


Allows you to add Help information or comments about the procedures, that you define in your project.

Dialog Box Options

Member Name Displays the name of the item selected in the Classes or the Members of list.

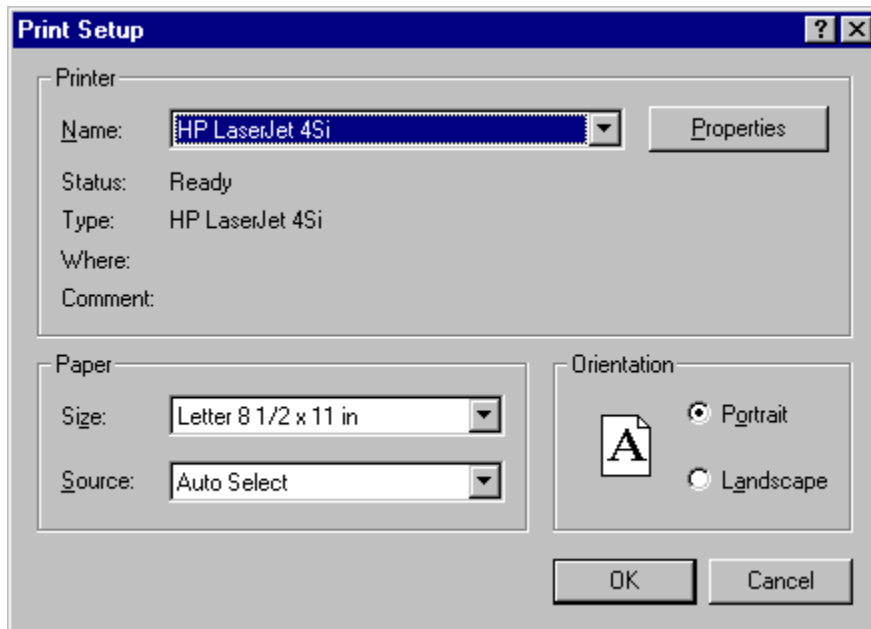
Description Allows you to specify a string that shows up in the Details pane of the Object Browser.

Help File Displays the Help file associated with the item listed in the Member Name box. This is set in the Help File Name box in the **General** tab of the Project Properties dialog box.

Help Context ID Assigns a unique numeric value for the context ID. This value is used to find the appropriate Help topic in the file listed in the Help File box when the user presses F1 or the  button while looking at the procedure in the Object Browser.

Print Setup Dialog Box

{ewc HLP95EN.DLL,DYNALINK,"See Also":"vbdlgPrintSetupDialogC"} {ewc
HLP95EN.DLL,DYNALINK,"Specifics":"vbdlgPrintSetupDialogS"}



Appears whenever you select Setup from the Print dialog box.

Use the Print Setup dialog box to select the printer, page orientation, and paper size.

Dialog box options

Printer Allows you to specify the printer. If you don't select a printer, Visual Basic will print to the Windows default printer.

- Name — Displays a list of available printers.
- Status — Displays the status of the printer and whether it is ready to print.
- Type — Displays the type of printer.
- Where — Displays the location of the printer. If the printer is on a network, displays the path to the server.
- Comment — Displays the physical location of the printer and additional information.
- Properties — Opens the Properties dialog box specific to the printer where you can choose additional options such as paper and the way graphics are printed.

Paper Allows you to select the paper size and source (from among those available for the printer). The sizes and sources available depend on the printer you have selected and they change when you change printers.

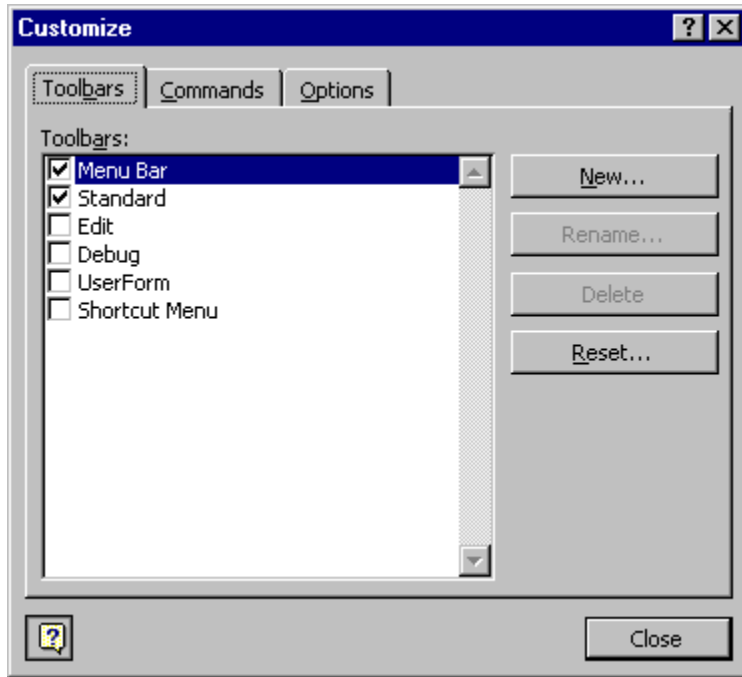
- Size — Displays a list of the available paper sizes.
- Source — Displays the available source of paper for the printer you choose.

Orientation Allows you to specify whether the program is to print in Portrait or Landscape orientation.

Customize Dialog Box

{ewc HLP95EN.DLL,DYNALINK,"See Also":"vadlgCustomizeDialogBoxC;vbproBooksOnlineJumpTopic"}
HLP95EN.DLL,DYNALINK,"Specifics":"vadlgCustomizeDialogBoxS"}

{ewc



Allows you to customize your toolbars and menus.

Tabs

Toolbars Allows you to create, rename, delete, and reset your toolbars.

Commands Contains commands you can drag to your menus and toolbars.

Options Allows you to change the size of your toolbar buttons, to show ToolTips and shortcut keys, and to add animation to your menus.

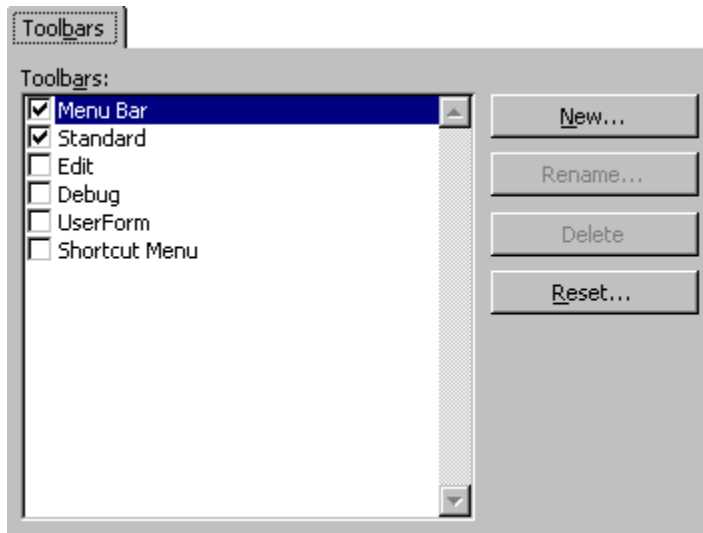


Office Assistant Button Displays the Office Assistant.

Toolbars Tab (Customize Dialog Box)

{ewc HLP95EN.DLL,DYNALINK,"See Also":"vadlgToolbarsTabCustomizeDialogC;vbproBooksOnlineJumpTopic"}
HLP95EN.DLL,DYNALINK,"Specifics":"vadlgToolbarsTabCustomizeDialogS"}

{ewc



Allows you to create, rename, delete, and reset your toolbars,

Tab Options

Toolbars box Displays the toolbars built into Visual Basic and any toolbars you create. When you show a toolbar, a check mark appears to the left of it.

Note The Menu bar cannot be hidden. It can only be reset.

New Opens the New Toolbar dialog box where you type the name for your new toolbar in the Toolbar Name box.

Rename Opens the Rename Toolbar dialog box where you type the new name for your toolbar. Only available if you select a user-defined toolbar.

Delete Deletes a user-defined toolbar from your project. Only available if you select a user-defined toolbar.

Reset Removes any changes to the built-in toolbars and resets them to their original state. Only available if you select a built-in toolbar.

Commands Tab (Customize Dialog Box)

{ewc HLP95EN.DLL,DYNALINK,"See Also":"vadlgCommandsTabCustomizeDialogC;vbproBooksOnlineJumpTopic"}
{ewc HLP95EN.DLL,DYNALINK,"Specifics":"vadlgCommandsTabCustomizeDialogS"}



Allows you to add controls and modify existing controls on the Menu bar or any toolbar. You can also modify the button image and text of your added commands.

Tab Options

Categories Lists the different command categories.

Commands Lists the controls available for the category you select in the Categories list. You can drag the command to the toolbar where you want the command to reside. To add the command to a menu, drag it over the menu's title and then into the location in the menu that appears.

Description Displays a QuickTip for the currently selected control.

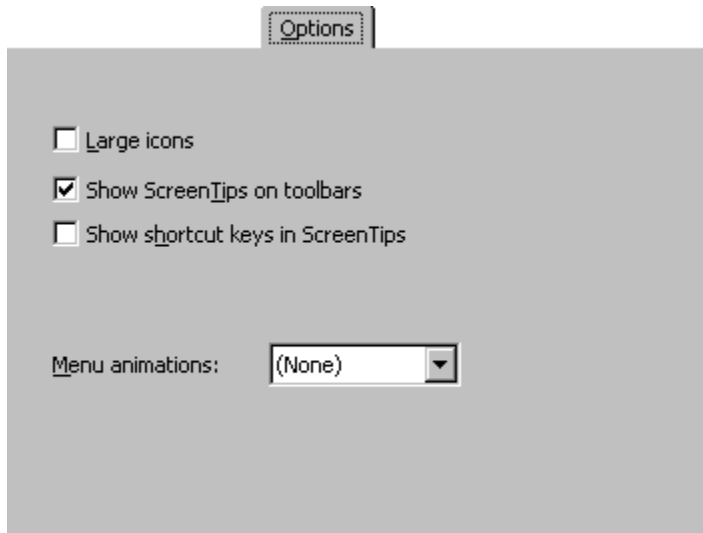
Modify Selection Allows you to change the selected command.

- **Reset** — Resets the command to the default.
- **Delete** — Deletes the command.
- **Name** — Changes the name of the control to the name you type into the box. By using the ampersand (&), you can also set shortcut keys.
- **Copy Button Image** — Copies the button image to the Clipboard.
- **Paste Button Image** — Pastes the button image from the Clipboard.
- **Reset Button Image** — Resets the button image to its default setting.
- **Edit Button Image** — Displays the Button Editor dialog box.
- **Change Button Image** — Displays a list of button images from which you can select a different image for your button.
- **Default Style** — For toolbar buttons, shows only the icon. For menu items, shows the icon and the name.
- **Text Only (Always)** — Shows the command name only.

- Text Only (in Menus) — Hides the icon, if any, for menu items. This options has no effect on toolbar buttons.
- Image and Text — For toolbars, shows both the icon and name. This option has no effect on menu items.
- Begin a Group — For toolbars, puts a separator line before the control. Dimmed when the control is at the beginning of the toolbar.

Options Tab (Customize Dialog Box)

{ewc HLP95EN.DLL,DYNALINK,"See Also":"vadlgOptionsTabCustomizeDialogBoxC;vbproBooksOnlineJumpTopic"}
{ewc HLP95EN.DLL,DYNALINK,"Specifics":"vadlgOptionsTabCustomizeDialogBoxS"}



Allows you to change the appearance of your menu bar and toolbars.

Tab Options

Large Icons Changes the toolbar icons to a larger size.

Show ScreenTips on toolbars Turns ScreenTips off and on.

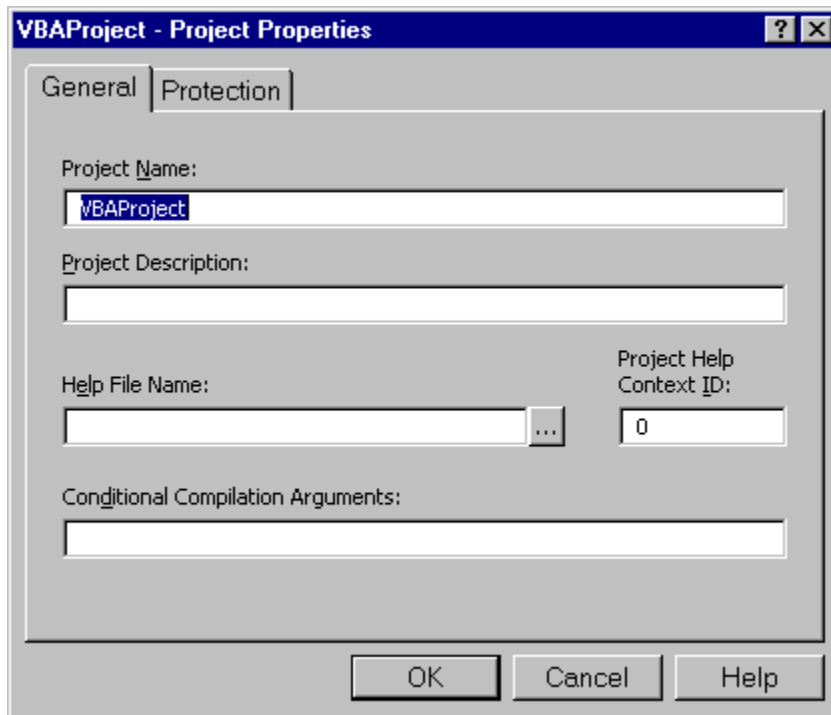
Show shortcut keys in ScreenTips Displays the shortcut keys on the menus.

Menu animations Lists available animations you can apply to your menu bar.

Project Properties Dialog Box

{ewc HLP95EN.DLL,DYNALINK,"See Also":"vbdlgProjectPropertiesDialogC;vbproBooksOnlineJumpTopic"}
HLP95EN.DLL,DYNALINK,"Specifics":"vbdlgProjectPropertiesDialogS"}

{ewc

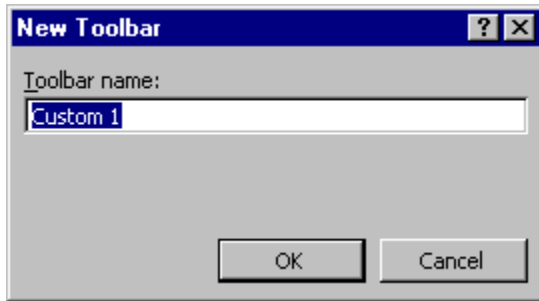


Specifies the settings for a specific project.

New Toolbar Dialog Box

{ewc HLP95EN.DLL,DYNALINK,"See Also":"vadlgNewToolbarC"}
HLP95EN.DLL,DYNALINK,"Specifics":"vadlgNewToolbarS"}

{ewc



Allows you to give your new toolbar a name.

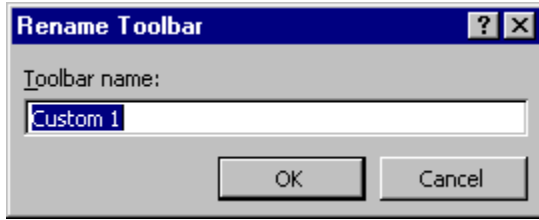
Dialog Box Option

Toolbar name You can type the name for your new toolbar or use the default name. The default name changes for each custom toolbar, for example, Custom1, Custom2 and so on.

Rename Toolbar Dialog Box

{ewc HLP95EN.DLL,DYNALINK,"See Also":"vbdlgRenameToolbarShortcutC;vbproBooksOnlineJumpTopic"}
HLP95EN.DLL,DYNALINK,"Specifics":"vbdlgRenameToolbarShortcutS"}

{ewc



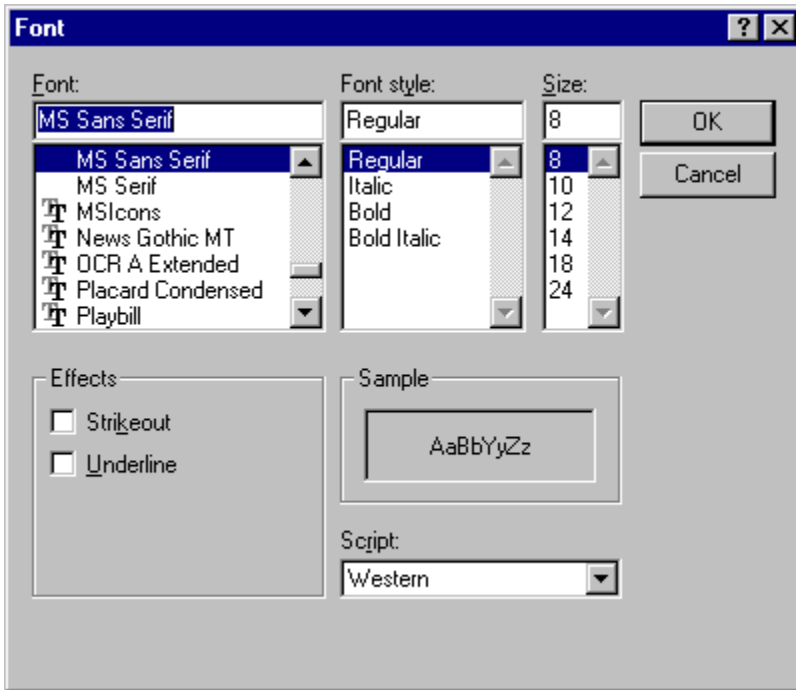
Allows you to rename your custom toolbars.

Dialog Box Option

Toolbar name Type a new name for your toolbar.

Font Dialog Box

{ewc HLP95EN.DLL,DYNALINK,"See Also":"vadlgFontDialogC"} {ewc HLP95EN.DLL,DYNALINK,"Specifics":"vadlgFontDialogS"}



Use to change the fonts, the font size, and/or the font style you use for text and data fields.

Dialog Box Options

Font Lists all the fonts that you have installed for Windows. When the box first appears, the font already in use for the selected element is highlighted.

Font Style Lists four additional attributes that you can assign to the font selected:

- Regular — Standard, unmodified style
- Bold — Boldface
- Italic — Italic
- Bold Italic — Bold Italic

Size Lists common point sizes for the highlighted font. When the box first appears, the point size for the font already in use for the selected element is highlighted, and the highlighted point size appears in the edit box at the top.

You can select directly from the list or type the new point size in the edit box at the top (if you know that you have additional sizes installed for the currently selected printer or if you are using scalable type).

Effects Lists two additional options that you can use for highlighting the selected font.

- Strikeout — Prints the strikeout character across the font
- Underline — Underlines the font

You may select as many of the Effects as you wish.

Sample Displays a sample of the font you have selected. The sample shows the font, style, size, effects, and color you have specified. You can use this box to preview the results as you experiment with different formatting options.

Script Displays a list of available scripts.













OK Applies the font changes to the selected report element.

Cancel Cancels all font changes and leaves the report unchanged.

Icons Used in the Object Browser and Code Windows

{ewc HLP95EN.DLL,DYNALINK,"See Also":"vamsclconsUsedInObjectBrowserC"} {ewc HLP95EN.DLL,DYNALINK,"Specifics":"vamsclconsUsedInObjectBrowserS"}


The Object Browser and Code window contain many icons that represent classes and members. The following is a list of icons and what they represent.

This Icon:	Represents a:
	Property
	Default Property
	Method
	Default Method
	Event
	Constant
	Module
	Class
	User Defined Type
	Global
	Library
	Project
	Built-in keywords and types
	Enum

Redo and Undo Commands (Edit Menu)


{ewc HLP95EN.DLL,DYNALINK,"See Also": "vbcmdCut;vbcmdUndoC;vbproBooksOnlineJumpTopic"} {ewc HLP95EN.DLL,DYNALINK,"Specifics": "vbcmdUndoS"}

Undo Reverses the last editing action, such as typing text in the code window or deleting controls. When you delete one or more controls, you can use the Undo command to restore the controls and all their properties.

Toolbar shortcut . Keyboard shortcuts: CTRL+Z or ALT+BACKSPACE.

Note You can't undo a Cut operation using the Undo command on a form.

Redo Restores the last text editing or resizing and positioning of controls if no other actions have occurred since the last Undo.

Toolbar shortcut .


For text edits, you can use Undo and Redo to restore up to twenty edits. These commands are unavailable at runtime, or if there was no previous edit, or if any other action has been performed after the last edit. Also, some large edits may cause low memory conditions that could prevent an Undo action.

Cut, Copy, Paste Commands (Edit Menu)


{ewc HLP95EN.DLL,DYNALINK,"See Also":"vbcmdCutC"}

{ewc HLP95EN.DLL,DYNALINK,"Specifics":"vbcmdCutS"}

Cut Removes the selected control or text and places it on the Clipboard. You must select at least one character or control for this command to be available. You can undo the Cut command when used on a control.

Toolbar shortcut: . Keyboard shortcut: CTRL+X or SHIFT+DELETE


Copy Copies the selected control or text onto the Clipboard. You must select at least one character or control for this command to be available. You cannot undo the Copy command in the Code window.

Toolbar shortcut: . Keyboard shortcut: CTRL+C or CTRL+INSERT.

Paste Inserts the contents of the Clipboard at the current location. Text is placed at the insertion point.

Pasted controls are placed in the middle of the form.

You can undo the Paste command in the Code window or in the form if you pasted the control onto the form.

Toolbar shortcut: . Keyboard shortcut: CTRL+V or SHIFT+INS.

Find and Find Next Commands (Edit Menu)


{ewc HLP95EN.DLL,DYNALINK,"See Also":"vbcmdFindC;vbproBooksOnlineJumpTopic"} {ewc
HLP95EN.DLL,DYNALINK,"Specifics":"vbcmdFindS"}

Find Searches for the specified text in a search range specified in the Find dialog box.

If a search is successful, the Find dialog box closes and Visual Basic selects the located text. If no match is found, Visual Basic displays a message stating that the text was not found.

Toolbar shortcut: . Keyboard shortcut: CTRL+F.

Find Next Finds and selects the next occurrence of the text specified in the Find What box of the Find dialog box.

Toolbar shortcut: . Keyboard shortcuts: F3 (Find Next) or SHIFT+F3 (Find Previous).

Dialog Box Options

Find What Type or insert the information you want to find, or click the down arrow and select from the last four entries. If any text is selected or the cursor is on a word when you choose the command, this text is displayed in the Find What box.

Search Specifies the search range.

- Current Procedure—Searches only the current procedure.
- Current Module—Searches only the current module.
- Current Project—Searches all the modules in your project.
- Selected Text—Searches a selected range of code in your project.

Direction Sets the direction of the search to Down or Up from the location of the cursor, or All in the selected search range.

Find Whole Word Only Searches for the full word by itself and not as part of a larger word.

Match Case Finds all occurrences with the exact combination of uppercase and lowercase letters specified in the Find What box.

Use Pattern Matching Searches using pattern-matching characters.

Find Next Finds and selects the next occurrence of the text specified in the Find What box.

Cancel Closes the dialog box without performing the search.

Replace Displays the Replace dialog box, retaining the information typed in the Find What dialog box.

Replace Command (Edit Menu)

{ewc HLP95EN.DLL,DYNALINK,"See Also":"vbcmdReplaceC;vbproBooksOnlineJumpTopic"} {ewc
HLP95EN.DLL,DYNALINK,"Specifics":"vbcmdReplaceS"}

Searches code in the project for the specified text and replaces it with the new text specified in the Replace dialog box.

Toolbar shortcut: . Keyboard shortcut: CTRL+H.

Dialog Box Options

Find What Type or insert the information you want to find, or click the down arrow and select from the last four entries. If any text is selected or the cursor is on a word when you choose the command, this text is displayed in the Find What box.

Replace With Type the text you want to use as the replacement text or paste it from the Clipboard. To delete the text in the Find What box from the document, leave the Replace With box empty.

Search Specifies the search range.

- Current Procedure—Searches only the current procedure.
- Current Module—Searches only the current module.
- Current Project—Searches all the modules in your project.
- Selected Text—Searches a selected range of code in your project.

Direction Sets the direction of the search to Down, Up, or All in the selected search range.

Find Whole Word Only Searches for the full word by itself and not as part of a larger word.

Match Case Finds all occurrences with the exact combination of uppercase and lowercase letters specified in the Find What box.

Use Pattern Matching Searches using pattern-matching characters.

Find Next Finds and selects the next occurrence of the text specified in the Find What box.

Cancel Closes the dialog box without replacing text.

Replace Confirms before replacing the search text with the replacement text.

Replace All Replaces all occurrences of the search text with the replacement text without stopping for confirmation.

Indent Command (Edit Menu)

{ewc HLP95EN.DLL,DYNALINK,"See Also":"vbcmdIndentC;vbproBooksOnlineJumpTopic"} {ewc
HLP95EN.DLL,DYNALINK,"Specifics":"vbcmdIndentS"}

Shifts all lines in the selection to the next tab stop. All lines in the selection are moved the same number of spaces to retain the same relative indentation within the selected block.

You can change the tab width on the Editor tab of the Options dialog box.

Toolbar shortcut: . Keyboard shortcuts: CTRL+M.


Outdent Command (Edit Menu)

{ewc HLP95EN.DLL,DYNALINK,"See Also":"vbcmdOutdentC;vbproBooksOnlineJumpTopic"}
HLP95EN.DLL,DYNALINK,"Specifics":"vbcmdOutdentS"}

{ewc

Shifts all lines in the selection to the previous tab stop. All lines in the selection are moved the same number of spaces to retain the same relative indentation within the selected block.

You can change the tab width on the Editor tab of the Options dialog box.

Toolbar shortcut: . Keyboard shortcuts: CTRL+SHIFT+M.


Bookmarks Commands (Edit Menu)

{ewc HLP95EN.DLL,DYNALINK,"See Also":"vbcmdBookmarksC;vbproBooksOnlineJumpTopic"} {ewc HLP95EN.DLL,DYNALINK,"Specifics":"vbcmdBookmarksS"}

Displays a menu that you can use to create or remove placeholders in the Code window, move to the next or preceding bookmark, or clear all of the bookmarks.

When you add a bookmark, a  appears next to the line where the bookmark is inserted.


Toggle Bookmark Toggles a bookmark on or off.

Toolbar button: 


Next Bookmark Moves the insertion point to the next bookmark.

Toolbar button: 

Previous Bookmark Moves the insertion point to the previous bookmark.

Toolbar button: 

Clear All Bookmarks Removes all bookmarks.

Toolbar button: 

Select All Command (Edit Menu)

```
{ewc HLP95EN.DLL,DYNALINK,"See Also":":vbcmdSelectAllC;vbproBooksOnlineJumpTopic"}  
HLP95EN.DLL,DYNALINK,"Specifics":":vbcmdSelectAllS"}
```

{ewc

Selects all of the code in the active Code window or all the controls on a form.

List Properties/Methods Command (Edit Menu)

{ewc HLP95EN.DLL,DYNALINK,"See Also":"vbcmdSelectMemberC;vbproBooksOnlineJumpTopic"} {ewc
HLP95EN.DLL,DYNALINK,"Specifics":"vbcmdSelectMemberS"}

Opens a dropdown list box in the Code window that contains the properties and methods available for the object. The List Properties/Methods command also displays a list of the globally available methods when the pointer is on a blank space. To have the list box automatically open as you type your code, select Auto List Members on the Editor tab in the Options dialog box.

You can find the property or method you want in the list box by:

- Typing the name. As you type, the property or method that matches the characters you type is selected and moves to the top of the list.
- Using the up and down arrow keys to move up and down in the list.
- Scrolling through the list and selecting the property or method you want.

You can insert the property or method into your statement by:

- Double-clicking the property or method.
- Selecting the property or method and pressing TAB to insert the selection or pressing ENTER to insert the selection and move to the next line.

Note Objects of the type Variant do not show a list after the period (.).

Toolbar shortcut: . Keyboard shortcut: CTRL+J.

List Constants Command (Edit Menu)

{ewc HLP95EN.DLL,DYNALINK,"See Also":"vbcmdSelectConstantC;vbproBooksOnlineJumpTopic"} {ewc
HLP95EN.DLL,DYNALINK,"Specifics":"vbcmdSelectConstantS"}

Opens a dropdown list box in the Code window that contains the valid constants for a property that you typed, and that preceded the equal sign (=). The List Constants command also works for functions with arguments that are constants. To have the list box automatically open as you type your code, select Auto List Members on the Editor tab in the Options dialog box.

You can find the constant you want by:

- Typing the name.
- Using the up and down arrow keys to move up and down in the list.
- Scrolling through the list and selecting the constant you want.

You can insert the constant into your code statement by:

- Double-clicking the constant.
- Selecting the constant and pressing TAB to insert the selection or pressing ENTER to insert the selection and move to the next line.

Toolbar shortcut: . Keyboard shortcut: CTRL+SHIFT+J.


Quick Info Command (Edit Menu)

{ewc HLP95EN.DLL,DYNALINK,"See Also":"vbcmdQuickInfoC;vbproBooksOnlineJumpTopic"} {ewc
HLP95EN.DLL,DYNALINK,"Specifics":"vbcmdQuickInfoS"}

Provides the syntax for a variable, function, statement, method, or procedure selected in the Code window.

Quick Info shows the syntax for the item and highlights the current parameter. For functions and procedures with parameters, the parameter appears bold as you type it, until you type the comma used to delineate it from the next parameter.

To have Quick Info automatically appear as you type your code, select Auto Quick Info on the Editor tab in the Options dialog box.

Toolbar shortcut: . Keyboard shortcut: CTRL+I.

Parameter Info Command (Edit Menu)

{ewc HLP95EN.DLL,DYNALINK,"See Also":"vbcmdParameterInfoC;vbproBooksOnlineJumpTopic"} {ewc
HLP95EN.DLL,DYNALINK,"Specifics":"vbcmdParameterInfoS"}

Shows a popup in the Code window that contains information about the parameters of the initial function or statement. If you have a function or statement that contains functions as its parameters, choosing Parameter Info provides information about the first function. Quick Info provides information about each embedded function.

As you type a parameter it is bold until you type the comma used to delineate it from the next parameter

The Parameter Info, once activated, will not close until:


- All of the required parameters are entered.
- The function is ended without using all of the optional parameters.
- You press ESC.

Toolbar shortcut: . Keyboard shortcut: CTRL+SHIFT+I.

Complete Word Command (Edit Menu)

```
{ewc HLP95EN.DLL,DYNALINK,"See Also":"vbcmdCompleteWordC;vbproBooksOnlineJumpTopic"} {ewc  
HLP95EN.DLL,DYNALINK,"Specifics":"vbcmdCompleteWordS"}
```

Fills in the rest of the word you are typing once you have entered enough characters for Visual Basic to identify the word you want.

Toolbar shortcut: . Keyboard shortcut: CTRL+SPACEBAR.

Print Command (File Menu)

{ewc HLP95EN.DLL,DYNALINK,"See Also":"vbcmdPrintC;vbproBooksOnlineJumpTopic"} {ewc HLP95EN.DLL,DYNALINK,"Specifics":"vbcmdPrintS"}

Prints forms and code to the printer specified in the Microsoft Windows Control Panel.

Toolbar shortcut: . Keyboard shortcut: CTRL+P.

Dialog Box Options

Printer Identifies the printer to which you are printing.

Range Determines the range you print:

- Selection — Prints the currently selected code.
- Current Module — Prints the forms and/or code for the currently selected module.
- Current Project — Prints the forms and/or code for the entire project.

Print What Determines what you print. You can select as many options as you like, depending on what you selected as the Range.

- Form Image — Prints the form images.
- Code — Prints the code for the selected range.

Print Quality Determines whether you print high, medium, low, or draft output quality.

Print to File If selected, print is sent to the file specified in the Print To File dialog box. This dialog box appears after you choose OK in the Print dialog box.

OK Prints your selection.

Cancel Closes the dialog box without printing.

Setup Displays the standard Print Setup dialog box.

Align Commands (Format Menu)

{ewc HLP95EN.DLL,DYNALINK,"See Also":"vbcmdAlignC;vbproBooksOnlineJumpTopic"}
HLP95EN.DLL,DYNALINK,"Specifics":"vbcmdAlignS"}

{ewc

Aligns selected objects with each other using the control with the white grab handles as the reference.

Lefts Aligns the horizontal position of the selected objects, putting the left-most edges in line with the control with the white grab handles.

Toolbar shortcut: .

Centers Aligns the horizontal position of the selected objects, putting the centers in line with the control with the white grab handles.

Toolbar shortcut: .

Rights Aligns the horizontal position of the selected objects, putting the right-most edges in line with the control with the white grab handles.

Toolbar shortcut: .

Tops Aligns the vertical position of the selected objects, putting the tops in line with the control with the white grab handles.

Toolbar shortcut: .

Middles Aligns the vertical position of selected objects, putting the middles in line with the control with the white grab handles.

Toolbar shortcut: .

Bottoms Aligns the vertical position of the selected objects, putting the bottoms in line with the control with the white grab handles.

Toolbar shortcut: .

To Grid Aligns the top left of the selected objects to the closest grid. The object is not resized.


Toolbar shortcut: .

Make Same Size Commands (Format Menu)

{ewc HLP95EN.DLL,DYNALINK,"See Also":"vbcmdMakeSameSizeC;vbproBooksOnlineJumpTopic"} {ewc HLP95EN.DLL,DYNALINK,"Specifics":"vbcmdMakeSameSizeS"}

Based on the object with the white grab handles, makes the selected objects the same size in the dimension you select.


Width Adjusts width.

Toolbar shortcut: .

Height Adjusts height.

Toolbar shortcut: .

Both Adjusts both the width and the height.

Toolbar shortcut: .

Horizontal Spacing Commands (Format Menu)

{ewc HLP95EN.DLL,DYNALINK,"See Also":"vbcmdHorizontalSpacingC;vbproBooksOnlineJumpTopic"}
HLP95EN.DLL,DYNALINK,"Specifics":"vbcmdHorizontalSpacingS"}

{ewc

Changes the horizontal space between selected objects.

Make Equal Moves the selected objects so that there is equal space between them using the outermost objects as endpoints. The outermost objects do not move.

Toolbar shortcut: .

Increase Increases horizontal spacing by one grid unit based on the object with focus. When an object has focus, white handles appear on its borders. You can change the size of your grid units in the General tab of the Options dialog box.

Toolbar shortcut: .

Decrease Decreases horizontal spacing by one grid unit based on the object with focus. When an object has focus, white handles appear on its borders. You can change the size of your grid units in the General tab of the Options dialog box.

Toolbar shortcut: .

Remove Removes the horizontal space so that the objects are aligned with their edges touching based on the object with focus. When an object has focus, white handles appear on its borders.

Toolbar shortcut: .

Note The object with focus does not move but the other objects move around it.

Note If using the Horizontal Spacing command does not produce the results you want, try to manually rearrange some of the objects and repeat the command. Also, try the using the Vertical Spacing command.

Vertical Spacing Commands (Format Menu)

{ewc HLP95EN.DLL,DYNALINK,"See Also":"vbcmdVerticalSpacingC;vbproBooksOnlineJumpTopic"} {ewc HLP95EN.DLL,DYNALINK,"Specifics":"vbcmdVerticalSpacingS"}

Changes the vertical space between the selected objects, based on the object with focus. When an object has focus, white handles appear on its borders.

Make Equal Moves the selected objects so that there is equal space between them using the top and bottom objects as the end points. The top and bottom objects do not move.

Toolbar shortcut: .

Increase Increases the vertical spacing by one grid based on the object with focus. You can change the size of your grid units in the General tab of the Options dialog box.

Toolbar shortcut: .

Decrease Decreases the vertical spacing by one grid based on the object with focus. You can change the size of your grid units in the General tab of the Options dialog box.

Toolbar shortcut: .

Remove Removes the vertical spacing so that the object's borders are touching, based on the object with focus

Toolbar shortcut: .

Note The object with focus does not move but the other objects move around it.

Note If using the Vertical Spacing command does not produce the results you want, try to manually rearrange some of the objects and repeat the command. Also, try the using the Horizontal Spacing command.


Center in Form Commands (Format Menu)

{ewc HLP95EN.DLL,DYNALINK,"See Also":"vbcmdCenterC;vbproBooksOnlineJumpTopic"}
HLP95EN.DLL,DYNALINK,"Specifics":"vbcmdCenterS"}


{ewc

Centers selected objects on the central axes of the form.

Horizontally Aligns the middles of the selected objects to a horizontal line in the middle of the form.

Toolbar shortcut: .

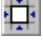
Vertically Aligns the centers of the selected objects to a vertical line in the center of the form.

Toolbar shortcut: .

Size to Grid Command (Format Menu)

{ewc HLP95EN.DLL,DYNALINK,"See Also":"vbcmdSizeToGridC;vbproBooksOnlineJumpTopic"} {ewc
HLP95EN.DLL,DYNALINK,"Specifics":"vbcmdSizeToGridS"}

Adjusts the height and width of the selected object to fit the nearest gridlines in the form. You can change the size of your grid on the General tab of the Options dialog box.

Toolbar shortcut: .

Order Command (Format Menu)

{ewc HLP95EN.DLL,DYNALINK,"See Also":"vacmdOrderC;vbproBooksOnlineJumpTopic"} {ewc
HLP95EN.DLL,DYNALINK,"Specifics":"vacmdOrderS"}

Changes the order of the selected objects on a form.


Bring To Front Moves the selected objects to the front of all other objects on a form.

Toolbar shortcut: . Keyboard shortcut: CTRL+J.


Send To Back Moves the selected objects behind all other objects on a form.

Toolbar shortcut: . Keyboard shortcut: CTRL+K.

Bring Forward Moves the selected object one step higher in the z-order.

Toolbar shortcut: .

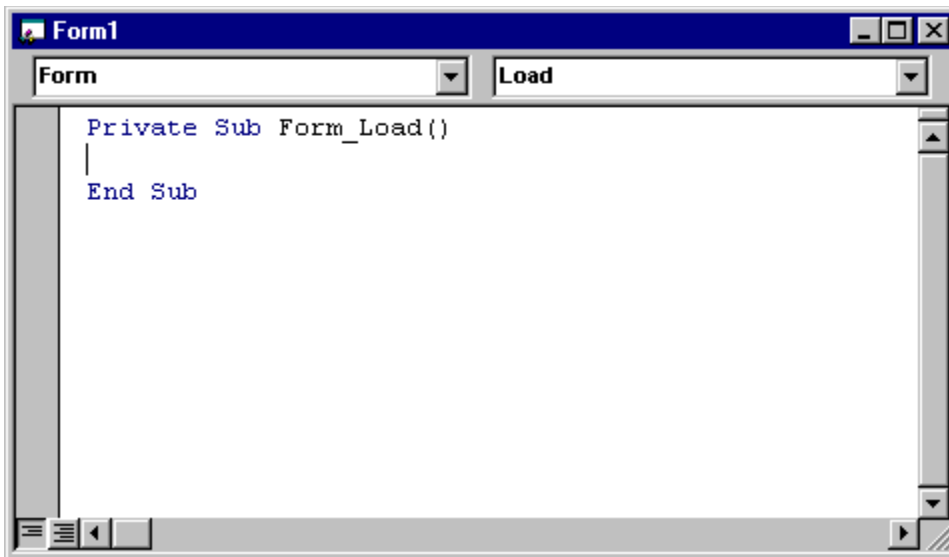
Send Backward Moves the selected object one step lower in the z-order.

Toolbar shortcut: .

Code Window

{ewc HLP95EN.DLL,DYNALINK,"See Also":"vbproBooksOnlineJumpTopic;vbrgnCodeWindowC"}
HLP95EN.DLL,DYNALINK,"Specifics":"vbrgnCodeWindowS"}

{ewc



Use the Code window to write, display, and edit Visual Basic code. You can open as many Code windows as you have modules, so you can easily view the code in different forms or modules, and copy and paste between them.

You can open a Code window from:

- The Project window, by selecting a form or module, and choosing the View Code button.
- A UserForm window, by double-clicking a control or form, choosing Code from the View menu, or pressing F7.

You can drag selected text to:

- A different location in the current Code window.
- Another Code window.
- The Immediate and Watch windows.
- The Recycle Bin.

Window Elements

Object Box

Displays the name of the selected object. Click the arrow to the right of the list box to display a list of all objects associated with the form.

Procedures/Events Box

Lists all the events recognized by Visual Basic for a form or control displayed in the Object box. When you select an event, the event procedure associated with that event name is displayed in the Code window.

If (General) is displayed in the Object box, the Procedure box lists any declarations and all of the general procedures that have been created for the form. If you are editing module code, the Procedure box lists all of the general procedures in the module. In either case, the procedure you select in the Procedure box is displayed in the Code window.

All the procedures in a module appear in a single, scrollable list that is sorted alphabetically by name. Selecting a procedure using the drop down list boxes at the top of the Code window moves the cursor to the first line of code in the procedure you select.

Split Bar

Dragging this bar down, splits the Code window into two horizontal panes, each of which scrolls separately. You can then view different parts of your code at the same time. The information that appears in the Object box and Procedures/Events box applies to the code in the pane that has the focus. Dragging the bar to the top or the bottom of the window or double-clicking the bar closes a pane.

Margin Indicator Bar

A gray area on the left side of the Code window where margin indicators are displayed.



Procedure View Icon

Displays the selected procedure. Only one procedure at a time is displayed in the Code window.



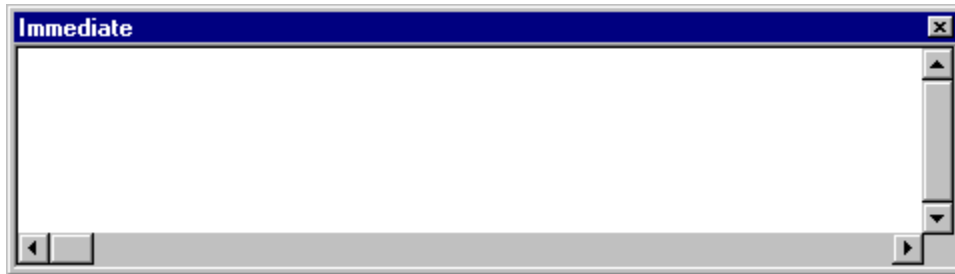
Full Module View Icon

Displays the entire code in the module.

Immediate Window

{ewc HLP95EN.DLL,DYNALINK,"See Also":"vbproBooksOnlineJumpTopic;vbrgnImmediateWindowC"}
HLP95EN.DLL,DYNALINK,"Specifics":"vbrgnImmediateWindowS"}

{ewc



Allows you to:

- Type or paste a line of code and press ENTER to run it.
- Copy and paste the code from the Immediate window into the Code window but does not allow you to save code in the Immediate window.

The Immediate window can be dragged and positioned anywhere on your screen unless you have made it a dockable window from the Docking Tab of the Options dialog box.

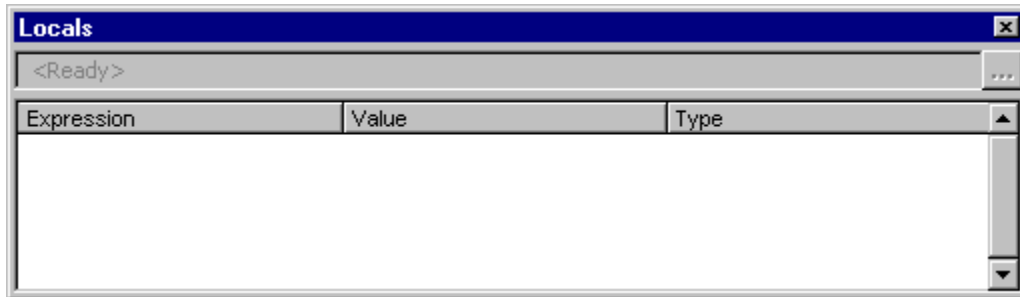
You can close the window by clicking the Close box. If the Close box is not visible, double-click the Title bar to make the Close box visible, then click it.

Note In break mode, a statement in the Immediate window is executed in the context or scope that is displayed in the Procedure box. For example, if you type **Print** *variablename*, your output is the value of a local variable. This is the same as if the **Print** method had occurred in the procedure you were executing when the program halted.

Locals Window

{ewc HLP95EN.DLL,DYNALINK,"See Also":"vbproBooksOnlineJumpTopic;vbrgnLocalsWindowC"}
HLP95EN.DLL,DYNALINK,"Specifics":"vbrgnLocalsWindowS"}

{ewc



Automatically displays all of the declared variables in the current procedure and their values.

When the Locals window is visible, it is automatically updated every time there is a change from Run to Break mode or you navigate in the stack display

You can:

- Resize the column headers by dragging the border to the right or the left.
- Close the window by clicking the Close box. If the Close box is not visible, double-click the Title bar to make the Close box visible, then click it.

Window Elements

Calls Stack Button Opens the Call Stack dialog box which lists the procedures in the call stack.

Expression Lists the name of the variables.


The first variable in the list is a special module variable and can be expanded to display all module level variables in the current module. For a class module, the system variable `<Me>` is defined. For standard modules, the first variable is the `<name of the current module>`. Global variables and variables in other projects are not accessible from the Locals window.


You cannot edit data in this column.

Value List the value of the variable.

When you click on a value in the Value column, the cursor changes to an I-beam. You can edit a value and then press ENTER, the UP ARROW key, the DOWN ARROW key, TAB, SHIFT+TAB, or click on the screen to validate the change. If the value is illegal, the Edit field remains active and the value is highlighted. A message box describing the error also appears. Cancel a change by pressing ESC.

All numeric variables must have a value listed. String variables can have an empty Value list.

Variables that contain subvariables can be expanded and collapsed. Collapsed variables do not display a value but each subvariable does. The expand icon,  and the collapse icon,

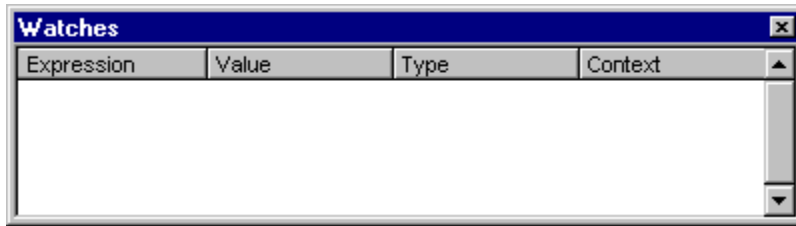
 appear to the left of the variable.

Type Lists the variable type. You cannot edit data in this column.

Watch Window

{ewc HLP95EN.DLL,DYNALINK,"See Also":"vbproBooksOnlineJumpTopic;vbrgnWatchWindowC"}
HLP95EN.DLL,DYNALINK,"Specifics":"vbrgnWatchWindowS"}

{ewc



Appears automatically when watch expressions are defined in the project.

You can:

- Change the size of the column headers by dragging its border to the right to make it larger or to the left to make it smaller.
- Drag a selected variable to the Immediate window or the Watch window
- Close the window by clicking the Close box. If the Close box is not visible, double-click the Title bar to make the Close box visible, then click it.

Window Elements

Expression Lists the watch expression with the Watch icon,  on the left.

Value List the value of the expression at the time of the transition to break mode.

You can edit a value and then press ENTER, the UP ARROW key, the DOWN ARROW key, TAB, SHIFT+TAB, or click somewhere on the screen to validate the change. If the value is illegal, the Edit field remains active and the value is highlighted. A message box describing the error also appears. Cancel a change by pressing ESC.

Type Lists the expression type.

Context Lists the context of the watch expression.

If the context of the expression isn't in scope when going to break mode, the current value isn't displayed.

You can close the window by clicking the Close box. If the Close box is not visible, double-click the Title bar to make the Close box visible, then click it.





Margin Indicators

{ewc HLP95EN.DLL,DYNALINK,"See Also":"vargnMarginWidgetsC;vbproBooksOnlineJumpTopic"} {ewc HLP95EN.DLL,DYNALINK,"Specifics":"vargnMarginWidgetsS"}

Visual Basic contains margin indicators that provide visual cues to certain actions during the editing of your code. If more than one action occurs on a line, the appropriate indicators also appear.

The margin indicators appear in the Margin Indicator bar on left side of the Code window.

You can turn the Margin Indicator Bar on and off in the Editor Format tab of the Options dialog box.

Margin Indicator	Margin Indicator Name	Description
	Breakpoint	Indicates that you have set a breakpoint using the Toggle Breakpoint command on the Debug menu. You can toggle the breakpoint by placing your mouse pointer in the margin indicator region and clicking.
	Current line of execution	Indicates the line of code that will be executed next. You can drag this margin indicator to a new location within any running code module. If you drag the Current line of execution margin indicator to any non-valid region or line, nothing happens and the indicator returns to the original location.
	Bookmark	Indicates the location of a bookmark set using the Toggle Bookmark command on the Edit menu.
	Call Stack Marker	Indicates lines that are currently in the call stack. The Call Stack Marker indicator appears only in <u>break mode</u> .

Data Tips Window

{ewc HLP95EN.DLL,DYNALINK,"See Also":"vargnAutoVariableWindowC;vbproBooksOnlineJumpTopic"} {ewc HLP95EN.DLL,DYNALINK,"Specifics":"vargnAutoVariableWindowS"}

`x = Empty`

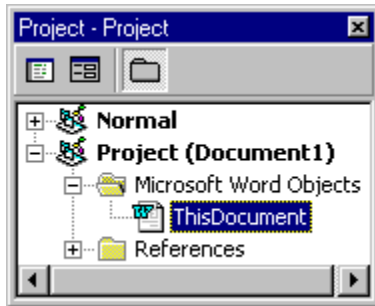
A box that displays the value of the variable over which your cursor is placed.

For example, if you set `x=5` and then set breakpoint before the end of your code, when you run your code and place your cursor over the “x”, the value 5 appears in the Data Tips window.

Available in break mode.

Project Explorer

{ewc HLP95EN.DLL,DYNALINK,"See Also":"vbproBooksOnlineJumpTopic;vbrgnProjectWindowC"} {ewc HLP95EN.DLL,DYNALINK,"Specifics":"vbrgnProjectWindowS"}



Displays a hierarchical list of the projects and all of the items contained in and referenced by each of the projects.

Window Elements



View Code

Displays the Code window so you can write and edit code associated with the selected item.



View Object

Displays the Object window for the selected item, an existing Document or UserForm.



Toggle Folders

Hides and shows the object folders while still showing the individual items contained within them.

List window

Lists the all loaded projects and the items included in each project.

Project



The project and items contained within it.

- UserForms



All .frm files associated with the project.

- Document

The document associated with the project. For example, in Microsoft Word, it is the Word document.

- Modules



All .bas modules for the project.

- Class Modules



All .cls files for the project.

- References

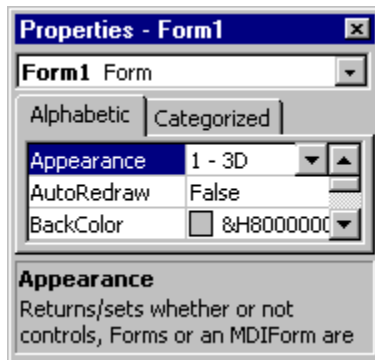


References to other projects that you have set using the References command on the Tools menu.

Properties Window

{ewc HLP95EN.DLL,DYNALINK,"See Also":"vbproBooksOnlineJumpTopic;vbrgnPropertiesWindowC"}
HLP95EN.DLL,DYNALINK,"Specifics":"vbrgnPropertiesWindowS"}

{ewc



Lists the design-time properties for selected objects and their current settings. You can change these properties at design time. When you select multiple controls, the Properties window contains a list of the properties common to all the selected controls.

Window Elements

Object Box

Lists the currently selected object. Only objects from the active form are visible. If you select multiple objects, the properties common to the objects and their settings, based on the first object selected, appear on the Properties List tabs.

Properties List Tabs

- **Alphabetic Tab** — Alphabetically lists all properties for the selected object that can be changed at design time, as well as their current settings. You can change the property setting by selecting the property name and typing or selecting the new setting.
- **Categorized Tab** — Lists all properties for the selected object by category. For example, **BackColor**, **Caption**, and **ForeColor** are in the Appearance category. You can collapse the list so that you see the categories or you can expand a category to see the properties. When you expand or collapse the list, you see a plus (+) icon or minus (-) icon to the left of the category name.

Data Types Displayed in Locals Window

{ewc HLP95EN.DLL,DYNALINK,"See Also":"vamscDataTypesInLocalsC;vbproBooksOnlineJumpTopic"} {ewc HLP95EN.DLL,DYNALINK,"Specifics":"vamscDataTypesInLocalsS"}

The following is a list of data types and their default state when they are displayed in the Locals window.

Data Type	Default State
Currency	Value is displayed.
Double	Value is displayed.
Integer	Value is displayed.
Long	Value is displayed.
Single	Value is displayed.
String	Value is displayed.
UDT	No value is displayed. Non-editable. Collapsed.
Variant	Value is displayed.
Object	No value is displayed. Non-editable. Collapsed.
Decimal	Value is displayed.
Array	No value is displayed. Non-editable. Collapsed.

General Tab (Project Properties Dialog Box)

{ewc HLP95EN.DLL,DYNALINK,"See Also":"vbdlgGeneralTabProjectSettingsDialogC;vbproBooksOnlineJumpTopic"} {ewc HLP95EN.DLL,DYNALINK,"Specifics":"vbdlgGeneralTabProjectSettingsDialogS"}

General

Project Name: VBAProject

Project Description:

Help File Name: Project Help Context ID: 0

Conditional Compilation Arguments:

Specifies the settings for the current Visual Basic project. The name of the project is displayed in the title bar.

Tab Options


Project Name Identifies your component in the Windows Registry and the Object Browser. It is important that it has a unique name.

The project name is the name of the *type library* for your component. The type library, or TypeLib, contains the description of the objects and interfaces provided by your component.

It is also used to qualify the names of classes. A combination of project name and class name is sometimes referred to as a *fully qualified class name*, or as a *programmatic ID*. The fully qualified class name may be required to correctly identify an object as belonging to your component.

Project Description Sets the descriptive text that is displayed in the Description pane at the bottom of the Object Browser.

Help File Name Displays the name of the Help file associated with the project.

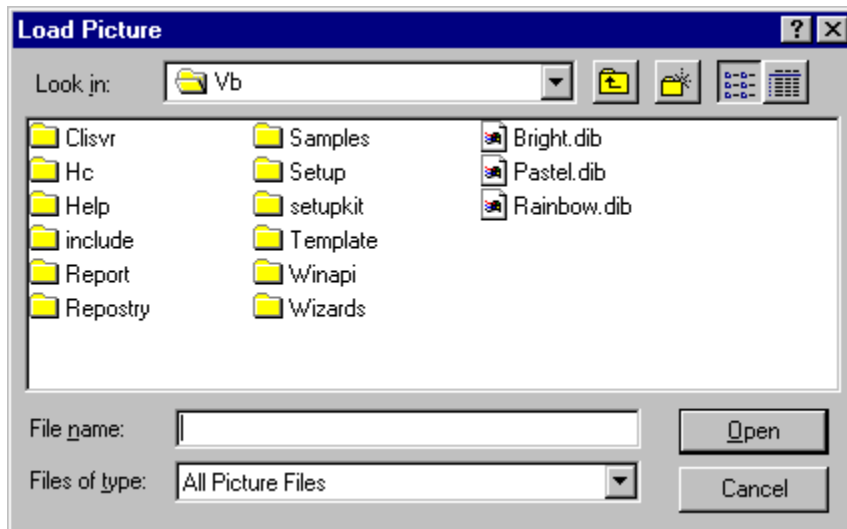
Project Help Context ID Lists the context ID for the specific Help topic to be called when the user selects the  button while the application's object library is selected in the Object Browser.

Conditional Compilation Arguments Lists the constant declarations used for conditional compilation.

Load Picture, Load Icon Dialog Boxes

{ewc HLP95EN.DLL,DYNALINK,"See Also":"vadlgLoadPictureLoadIconDialogsC;vbproBooksOnlineJumpTopic"}
HLP95EN.DLL,DYNALINK,"Specifics":"vadlgLoadPictureLoadIconDialogsS"}

{ewc



Loads an existing picture or icon file.

Dialog Box Options

Look in

Select the location of the picture you want to open.

Up One Level



Shows a list of folders or drives one level above the current folder.

Create New Folder



Creates a new folder.

List



Shows the folders or files in a list format that includes the icon and its name.

Details



Shows the folders or files in a list that includes the icon and name, its size, type, and the date and time it was last modified.

File name

Select or type the name of a picture file you want to open.

List files of type

Select a file type. Files of the selected type appear in the File name list box.

- All Picture Files (*.bmp, *.dib, *.wmf, *.emf, *.ico, *.cur)—Lists all picture files.

- Bitmaps (*.bmp, *.dib)—Lists bitmaps and DIBs.
- Metafiles (*.wmf, *.wmf)—Lists Microsoft Windows Metafiles.
- Icons (*.ico, *.cur)—Lists the icons.
- All Files (*.*)—Lists files of all types.

Open

Opens the selected file.

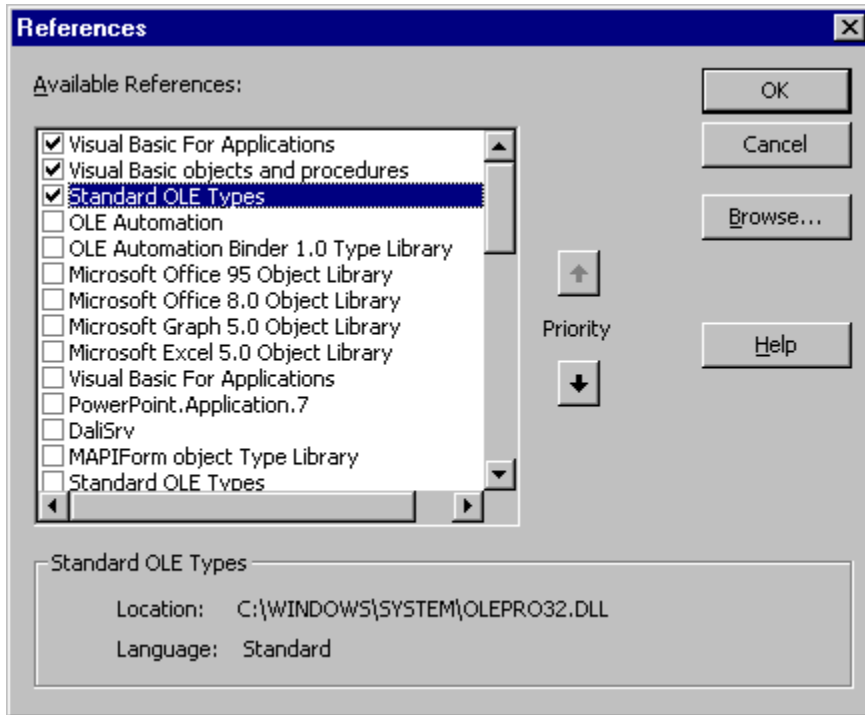
Cancel

Closes the dialog box without loading a picture file.

References Dialog Box

{ewc HLP95EN.DLL,DYNALINK,"See Also":"vbproBooksOnlineJumpTopic;vbrgnAddReferencesC"}
HLP95EN.DLL,DYNALINK,"Specifics":"vbrgnAddReferencesS"}

{ewc




Allows you to select another application's objects that you want available in your code by setting a reference to that application's object library.


Dialog Box Options

Available References Lists the references available to your project.

- After you set a reference to an object library by selecting the check box next to its name, you can find a specific object and its methods and properties in the Object Browser.
- If you are not using any objects in a referenced library, you should clear the check box for that reference to minimize the number of object references Visual Basic must resolve, thus reducing the time it takes your project to compile. You can't remove a reference for an item that is used in your project.
- If you remove a reference to an object that you are currently using in your project, you will receive an error the next time you refer to that object.
- References not in use are listed alphabetically.

Note You can't remove the "Visual Basic for Applications" and "Visual Basic objects and procedures" references, because they are necessary for running Visual Basic.

Priority Buttons Moves references up, , and down,

, on the list. When you refer to an object in code, Visual Basic searches each referenced object selected in the References dialog box in the order the referenced objects are displayed. If two referenced objects use the same name, Visual Basic uses the definition provided by the referenced object listed higher in the Available References box.

Result Displays the name and path of the reference selected in the Available References box, as

well as the language version.


Browse Displays the Add Reference dialog box so that you can search other directories for and add references to the Available Resources box for the following types:

- Type Libraries (*.olb, *.tlb, *.dll)
- Executable Files (*.exe, *.dll)
- ActiveX Controls (*.ocx)
- All Files (*.*)


The Add References dialog box is the Open common dialog box.

Break Command (Run Menu)

{ewc HLP95EN.DLL,DYNALINK,"See Also":"vbcmdBreakC;vbproBooksOnlineJumpTopic"} {ewc
HLP95EN.DLL,DYNALINK,"Specifics":"vbcmdBreakS"}

Stops execution of a program while it's running and switches to break mode. Any statement being executed when you choose this command is displayed in the Code window with  in the left margin if you checked Margin Indicator Bar in the Editor Format tab of the Options dialog box. If the application is waiting for events in the idle loop (no statement is being executed), no statement is highlighted until an event occurs.

Some editing changes made in break mode may require you to restart your program for the changes to take effect.

Toolbar button:  Keyboard shortcut: CTRL+BREAK.

Code Window Keyboard Shortcuts

{ewc HLP95EN.DLL,DYNALINK,"See Also":"vbcmdShortcutC;vbproBooksOnlineJumpTopic"}
HLP95EN.DLL,DYNALINK,"Specifics":"vbcmdShortcutS"}

{ewc

You can use the following shortcut keys to access commands in the Code window.

Description	Shortcut Keys
View Code window	F7
View <u>Object Browser</u>	F2
Find	CTRL+F
Replace	CTRL+H
Find Next	F3
Find Previous	SHIFT+F3
Next procedure	CTRL+DOWN ARROW
Previous procedure	CTRL+UP ARROW
View definition	SHIFT+F2
Shift one screen down	CTRL+PAGE DOWN
Shift one screen up	CTRL+PAGE UP
Go to last position	CTRL+SHIFT+F2
Beginning of <u>module</u>	CTRL+HOME
End of module	CTRL+END
Move one word to right	CTRL+RIGHT ARROW
Move one word to left	CTRL+LEFT ARROW
Move to end of line	END
Move to beginning of line	HOME
Undo	CTRL+Z
Delete current line	CTRL+Y
Delete to end of word	CTRL+DELETE
Indent	TAB
Outdent	SHIFT+TAB
Clear all <u>breakpoints</u>	CTRL+SHIFT+F9
View shortcut menu	SHIFT+F10
Redo	CTRL+Q

Code Window General Use Keys

{ewc HLP95EN.DLL,DYNALINK,"See Also":"vacmdCodeWindowGeneralUseKeysC;vbproBooksOnlineJumpTopic"}
{ewc HLP95EN.DLL,DYNALINK,"Specifics":"vacmdCodeWindowGeneralUseKeysS"}

Use these key combinations in the Code window:

Press	To
F1	Get context-sensitive Help on functions, statements, methods, properties, or events.
F2	Display the <u>Object Browser</u> .
F9	Set or remove a <u>breakpoint</u> .
CTRL+SHIFT+F9	Clear all breakpoints.
F5	Run a Sub/UserForm or macro.
F8	Execute code one line at a time (single step).
SHIFT+F8	Execute code one procedure at a time (procedure step).
CTRL+BREAK	Stop running a Visual Basic application.
HOME	Move the cursor to the beginning of text in a line.
END	Move the cursor to the end of text in a line.
Double-click on the split bar	Delete the split bar.
CTRL+J	Turn on List Properties/Methods.
CTRL+SHIFT+J	Turn on List Constants.
CTRL+I	Turn on Quick Info.
CTRL+SHIFT+I	Turn on Parameter Info.
CTRL+SPACEBAR	Turn on Complete Word.
SHIFT+F10	View shortcut menu.
ALT+F5	Runs the error handler code or returns the error to the calling procedure. Does not affect the setting for error trapping on the General tab of the Options dialog box.
ALT+F8	Steps into the error handler or returns the error to the calling procedure. Does not affect the setting for error trapping on the General tab of the Options dialog box.

Code Window Navigation Keys

{ewc HLP95EN.DLL,DYNALINK,"See Also":"vakbdCodeWindowNavigationC;vbproBooksOnlineJumpTopic"}
HLP95EN.DLL,DYNALINK,"Specifcics":"vakbdCodeWindowNavigationS"}

{ewc

Use these key combinations to navigate in the Code window:

Press	To
CTRL+F7	Move the insertion point into the Object box.
SHIFT+F2	Go to the definition of the selected procedure.
CTRL+DOWN ARROW	Display the next procedure.
CTRL+UP ARROW	Display the previous procedure.
PAGE DOWN	Page down through the procedures in your code.
PAGE UP	Page up through the procedures in your code.
CTRL+SHIFT+F2	Go back to the last position in your code.
CTRL+HOME	Go to the beginning of the module.
CTRL+END	Go to the end of the module.
CTRL+RIGHT ARROW	Go one word to the right.
CTRL+LEFT ARROW	Go one word to the left.
END	Go to the end of the line.
HOME	Go to the beginning of the line.
CTRL+PAGE DOWN	Go to the bottom of the current procedure.
CTRL+PAGE UP	Go to the top of the current procedure.
F6	Switch between Code window panes (when the window is split).

Code Editing Keys

{ewc HLP95EN.DLL,DYNALINK,"See Also":"vakbdCodeEditingKeysC;vbproBooksOnlineJumpTopic"}
HLP95EN.DLL,DYNALINK,"Specifics":"vakbdCodeEditingKeysS"}

{ewc

Use these key combinations to edit code in the Code window:

Press	To
CTRL+C	Copy the selected text to the Clipboard.
CTRL+X	Cut the selected text to the Clipboard.
DELETE or DEL	Delete the selected text without placing it on the Clipboard.
CTRL+V	Paste the Clipboard contents at the insertion point.
CTRL+Z	Undo the last editing action in the current line.
CTRL+Y	Cut the current line to the Clipboard.
CTRL+DELETE	Delete to the end of the word.
CTRL+BACKSPACE	Delete to the beginning of the word.
F3	Find Next: repeat text search down through your code. If no text search has been done, the Find dialog box is displayed.
SHIFT+F3	Find Previous: repeat text search up through your code. If no text search has been done, the Find dialog box is displayed.
SHIFT+TAB	Remove indent.

Menu Shortcut Keys Available in the Code Window

{ewc HLP95EN.DLL,DYNALINK,"See Also":"vakbdMenuShortcutKeysInCodeWindowC;vbproBooksOnlineJumpTopic"}
{ewc HLP95EN.DLL,DYNALINK,"Specifics":"vakbdMenuShortcutKeysInCodeWindowS"}

Use these key combinations for menu shortcuts in the Code window:

Press	To
CTRL+P	Print
CTRL+Z	Undo
CTRL+V	Paste
DEL or DELETE	Delete
CTRL+F	Find
F3	Find Next
CTRL+H	Replace
TAB	Indent
SHIFT+TAB	Outdent
CTRL+J	List Properties/Methods
CTRL+SHIFT+J	List Constants
CTRL+I	Quick Info
CTRL+SHIFT+I	Parameter Info
CTRL+SPACEBAR	Complete Word
SHIFT+F2	Definition
CTRL+SHIFT+F2	Last Position
F2	Object Browser
CTRL+G	Immediate Window
CTRL+R	Project Explorer
F4	Properties Window
F8	Step Into
SHIFT+F8	Step Over
CTRL+F8	Run To Cursor
SHIFT+F9	Quick Watch
F9	Toggle Breakpoint.
CTRL+SHIFT+F9	Clear All Breakpoints
F5	Run Sub/Form or Run Macro
CTRL+BREAK	Break
SHIFT+F10	Shortcut menu
CTRL+M	Import File
CTRL+E	Export File

Immediate Window Keyboard Shortcuts

{ewc HLP95EN.DLL,DYNALINK,"See Also":"vakbdImmediateWindowKeysC;vbproBooksOnlineJumpTopic"}
HLP95EN.DLL,DYNALINK,"Specifics":"vakbdImmediateWindowKeysS"}

{ewc

Use these key combinations in the Immediate window:

Press	To
ENTER	Run a line of selected code.
CTRL+C	Copy the selected text to the Clipboard.
CTRL+V	Paste the Clipboard contents at the insertion point.
CTRL+X	Cut the selected text to the Clipboard.
CTRL+L	Display Call Stack dialog box (break mode only).
F5	Continue running an application.
F8	Execute code one line at a time (single step).
SHIFT+F8	Execute code one procedure at a time (procedure step).
DELETE or DEL	Delete the selected text without placing it on the Clipboard.
F2	Display the <u>Object Browser</u> .
CTRL+ENTER	Insert carriage return.
CTRL+HOME	Move the cursor to the top of the Immediate window.
CTRL+END	Move the cursor to the end of the Immediate window.
SHIFT+F10	View shortcut menu.
ALT+F5	Runs the error handler code or returns the error to the calling procedure. Does not affect the setting for error trapping on the General tab of the Options dialog box.
ALT+F8	Steps into the error handler or returns the error to the calling procedure. Does not affect the setting for error trapping on the General tab of the Options dialog box.

Watch Window Keyboard Shortcuts

{ewc HLP95EN.DLL,DYNALINK,"See Also":"vakbdWatchWindowKeyboardShortcutC;vbproBooksOnlineJumpTopic"}
{ewc HLP95EN.DLL,DYNALINK,"Specifics":"vakbdWatchWindowKeyboardShortcutS"}

Use these key combinations in the Watch window:

Press	To
SHIFT+ENTER	Display the selected watch expression.
CTRL+W	Display Edit Watch dialog box.
ENTER	Expands or collapses the selected watch value if it has a plus (+) or minus (-) to the left of it.
F2	Display the <u>Object Browser</u> .
SHIFT+F10	View shortcut menu.

Properties Window Keyboard Shortcuts

{ewc HLP95EN.DLL,DYNALINK,"See Also":"vakbdPropertiesWindowsKeysC;vbproBooksOnlineJumpTopic"}
HLP95EN.DLL,DYNALINK,"Specifics":"vakbdPropertiesWindowsKeysS"}

{ewc

Use these key combinations when the Property list has the focus in the Properties window:

Press	To
PAGE DOWN	Move down through the Property list, .
PAGE UP	Move up through the Property list.
DOWN ARROW	Move down through the Property list, one property at a time.
UP ARROW	Move up through the Property list, one property at a time.
RIGHT ARROW	Move down through the Property list, one property at a time.
LEFT ARROW	Move up through the Property list, one property at a time.
END	Move to the last property in the list.
HOME	Move to the first property in the list.
ALT+F6	Switch between the last two active windows.
TAB	Move the insertion point among the property, properties settings box, and the Object box.
CTRL+SHIFT+ALPHA	Move to the next property in the list that begins with the alpha character.
Double-Click	Cycle through settings of enumerated properties, or switch focus to the settings box for other property types.

Use these key combinations when the settings box for a property has the focus in the Properties window:

Press	To
CTRL+Z	Undo the last editing action in the current line.
CTRL+C	Copy the selected text to the Clipboard.
CTRL+X	Cut the selected text to the Clipboard.
DEL or DELETE	Delete the selected text without placing it on the Clipboard.
CTRL+V	Paste the Clipboard contents at the insertion point.
SHIFT+TAB	Switch focus between the Object box and the active Properties tab.
TAB	Move the focus among the Object box, the active Properties tab, a property, and the property value.
ESC	Cancel the property change.
CTRL+SHIFT+ALPHA	Move to the next property that begins with the alpha character, in the list.

Use these key combinations when a property has enumerated values and its settings box has the focus in the Properties window:

Press	To
ALT+DOWN ARROW	Open the settings box list.
ALT+UP ARROW	Close the settings box list.

Use these key combinations when you set the **BackColor**, **ForeColor**, **FillColor**, or **BorderColor** properties, and the settings box has the focus in the Properties window:

Press	To
ALT+DOWN ARROW	Display the Color palette.
ALT+UP ARROW	Close the Color palette.

Use these key combinations when you set the **Icon** or **Picture** properties, and the settings box has the focus in the Properties window:

Press	To
ALT+DOWN ARROW	Display the Load Icon or Load Picture dialog box.
ALT+UP ARROW	Display the Load Icon or Load Picture dialog box.

Project Explorer Keyboard Shortcuts

{ewc HLP95EN.DLL,DYNALINK,"See Also":"vakbdProjectWindowC;vbproBooksOnlineJumpTopic"}
HLP95EN.DLL,DYNALINK,"Specifics":"vakbdProjectWindowS"}

{ewc

Use these key combinations in the Project Explorer:

Press	To
ENTER	Open the selected file from the list, or expand and collapse the list to show its subentries.
SHIFT+ENTER	Open the Code window for the selected file.
F7	Open the Code window for the selected file.
SHIFT+F10	View shortcut menu.
HOME	Select the first file in the list.
END	Select the last file in the list.
RIGHT ARROW	Expands a list and then selects a subentry in the list each time you press it.
LEFT ARROW	Selects a subentry in the list and then moves up the list each time you press it until the subentry list collapses into a folder.
UP ARROW	Moves up the list one entry at a time.
DOWN ARROW	Moves down the list one entry at a time.

Global Keys

{ewc HLP95EN.DLL,DYNALINK,"See Also":"vbkbdGlobalC;vbproBooksOnlineJumpTopic"}
HLP95EN.DLL,DYNALINK,"Specifics":"vbkbdGlobalS"}

{ewc

Use these key combinations in all Visual Basic windows:

Press	To
F5	Run a SubUserForm or macro.
F8	Execute code one line at a time.
SHIFT+F8	Execute <u>statements</u> one line at a time without stepping into procedure calls.
CTRL+BREAK	Stop running a Visual Basic application.
CTRL+G	Displays the Immediate window.
ALT+F5	Runs the error handler code or returns the error to the calling procedure. Does not affect the setting for error trapping on the General tab of the Options dialog box.
ALT+F8	Steps into the error handler or returns the error to the calling procedure. Does not affect the setting for error trapping on the General tab of the Options dialog box.
CTRL+TAB	Switch between windows.

UserForm Window Keys

{ewc HLP95EN.DLL,DYNALINK,"See Also":"vakbdUserFormWinC;vbproBooksOnlineJumpTopic"}
HLP95EN.DLL,DYNALINK,"Specifics":"vakbdUserFormWinS"}

{ewc

Use these key combinations in the UserForm window:

Press	To
SHIFT+CTRL+ALPHA	Select a property in the Property list of the Properties window.
ALPHA	Enter a value in the Properties window for the selected property.
F7	Open the Code window for the selected object.
DEL or DELETE	Delete the selected controls without placing them on the Clipboard.
CTRL+Z	Undo a deletion of controls.
TAB	Cycle forward through controls in <u>tab order</u> .
SHIFT+TAB	Cycle backward through controls in tab order.
CTRL+CLICK	Add or remove a control from the selection.
CLICK+DRAG	Select multiple controls.
SHIFT+CLICK	Select multiple controls.
CTRL+CLICK+DRAG	Add or remove controls from the current selection.
F4	Display the Properties window (design time only).
SHIFT+F10	View shortcut.
CTRL+J	Bring to front (affects overlapping controls at design time only).
CTRL+K	Send to back (affects overlapping controls at design time only).

To deselect all controls, click the form. To select controls in a container, first deselect the container and then CTRL+CLICK+DRAG around the desired controls.

Options Command (Tools Menu)

{ewc HLP95EN.DLL,DYNALINK,"See Also":"vbcmdOptionsC;vbproBooksOnlineJumpTopic"} {ewc
HLP95EN.DLL,DYNALINK,"Specifics":"vbcmdOptionsS"}

Displays the Options dialog box, from which you can choose a tab to set attributes of the Visual Basic programming environment.

Tabs

- Editor
- Editor Format
- General
- Docking

Remove <Item> Command (File Menu)

{ewc HLP95EN.DLL,DYNALINK,"See Also":"vbcmdRemoveComponentC;vbproBooksOnlineJumpTopic"} {ewc HLP95EN.DLL,DYNALINK,"Specifics":"vbcmdRemoveComponentS"}

Permanently deletes the active form or module from the project. Not available when an item is not selected in the Project Explorer.

When removing a module from a project, make sure the remaining code doesn't refer to the removed item.

Before your item is deleted, you are asked if you want to export it as a file. If you click Yes in the message box, the Export File dialog box opens. If you click No, the item is deleted.


Important You cannot undo this action.

Clear and Delete Commands (Edit Menu)

{ewc HLP95EN.DLL,DYNALINK,"See Also":"vacmdClearCommandEditC;vbproBooksOnlineJumpTopic"} {ewc HLP95EN.DLL,DYNALINK,"Specifics":"vacmdClearCommandEditS"}

Clear Deletes text only when a module is active.

Delete At other times, changes to the Delete command that deletes the currently selected control, text, or watch expression. You can undo the Delete command in the Code window or in the form if you deleted the control from the form.

Toolbar shortcut:  . . Keyboard shortcut: DEL.

Not available at run time.

Import File and Export File Commands (File Menu)

{ewc HLP95EN.DLL,DYNALINK,"See Also":"vbcmdImportFileC;vbproBooksOnlineJumpTopic"} {ewc HLP95EN.DLL,DYNALINK,"Specifics":"vbcmdImportFileS"}

Adds existing modules and forms to your project or saves a module or form as a separate file.

Import File Displays the Import Files dialog box which allows you to add an existing module or form to the project. A copy of the file is added to the project and the original file is left intact. If you import a form or module with the same name as an existing one, the file is added with a number appended to it.

Imported components appear in the Project Explorer window.

Toolbar shortcut: . Keyboard shortcut: CTRL+M.

Export File Displays the Export File dialog box so that you can extract the active form or module from the project. The file is copied into an external file.

Not available if you have not selected a file in the Project Explorer.


Toolbar shortcut: . Keyboard shortcut: CTRL+E.

Reset <project> Command (Run Menu)

{ewc HLP95EN.DLL,DYNALINK,"See Also":"vbcmdResetC;vbproBooksOnlineJumpTopic"}
HLP95EN.DLL,DYNALINK,"Specifics":"vbcmdResetS"}

{ewc

Clears the Call stack and clears the module level variables.

Toolbar shortcut: .


Design Mode and Exit Design Mode Commands (Run Menu)

{ewc HLP95EN.DLL,DYNALINK,"See Also":"vbcmdDesignModeC;vbproBooksOnlineJumpTopic"} {ewc HLP95EN.DLL,DYNALINK,"Specifics":"vbcmdDesignModeS"}

Turns design mode on and off per project. Design mode is the time during which no code from the project is running and events from the host or project will not execute. You can leave design mode by executing a macro or using the Immediate window.

Design Mode Command Turns design mode on and changes to Exit Design Mode.

Exit Design Mode Command Turns design mode off and clears all module level variables in the project.

Toolbar shortcut: 

UserForm Command (Insert Menu)

```
{ewc HLP95EN.DLL,DYNALINK,"See Also": "vbcmdDialogInsertC;vbproBooksOnlineJumpTopic"}  
HLP95EN.DLL,DYNALINK,"Specifics": "vbcmdDialogInsertS"}
```

{ewc

Creates a new form and adds it to your project.

Run Sub/UserForm, Continue, and Run Macro Commands (Run Menu)

{ewc HLP95EN.DLL,DYNALINK,"See Also":"vbcmdContinueC;vbproBooksOnlineJumpTopic"} {ewc HLP95EN.DLL,DYNALINK,"Specifics":"vbcmdContinueS"}

Run Sub/UserForm Runs the current procedure if the cursor is in a procedure or runs the form if a form is currently active. This command becomes the Continue command when you are in break mode.

If neither Code window nor UserForm is active, this command becomes the Run Macro command.

Continue Resumes running the current procedure or form.

Run Macro Runs the macro.

Close & Return to <host application> Command (File Menu)

{ewc HLP95EN.DLL,DYNALINK,"See Also":"vbcmdCloseReturnTohostC;vbproBooksOnlineJumpTopic"} {ewc HLP95EN.DLL,DYNALINK,"Specifics":"vbcmdCloseReturnTohostS"}

Closes the development environment and returns you to the host application. Visual Basic is hidden but remains in memory.

Compile <project> Command (Debug Menu)

{ewc HLP95EN.DLL,DYNALINK,"See Also":"vacmdCompileDebugMC;vbproBooksOnlineJumpTopic"}
HLP95EN.DLL,DYNALINK,"Specifics":"vacmdCompileDebugMS"}

{ewc

Compiles your project.

Toolbar shortcut: .


Object Command (Insert Menu)

{ewc HLP95EN.DLL,DYNALINK,"See Also":"vbcmdObjectInsertC;vbproBooksOnlineJumpTopic"}
HLP95EN.DLL,DYNALINK,"Specifics":"vbcmdObjectInsertS"}

{ewc

Inserts an object into the active form.

Not available when a form is not open or in break mode.

Toolbar shortcut: .

Save <host document> Command (File Menu)

{ewc HLP95EN.DLL,DYNALINK,"See Also":"vbcmdSaveProjectC;vbproBooksOnlineJumpTopic"} {ewc
HLP95EN.DLL,DYNALINK,"Specifics":"vbcmdSaveProjectS"}

Saves the current project and all of its components – forms and modules – with your document.

Toolbar shortcut: . Keyboard shortcut: CTRL+5.

Macros Command (Tools Menu)

{ewc HLP95EN.DLL,DYNALINK,"See Also":"vacmdMacrosToolsC;vbproBooksOnlineJumpTopic"} {ewc
HLP95EN.DLL,DYNALINK,"Specifics":"vacmdMacrosToolsS"}

Displays the Macro dialog box where you can create, run, edit, or delete a macro.

<Host application> Command (View Menu)

{ewc HLP95EN.DLL,DYNALINK,"See Also":"vacmdProjectViewC;vbproBooksOnlineJumpTopic"} {ewc
HLP95EN.DLL,DYNALINK,"Specifics":"vacmdProjectViewS"}

Moves the host application on top of the Visual Basic editor so that you can view it. The name of the command changes to the name of the host application.

Keyboard shortcut: ALT+F11.

Procedure Command (Insert Menu)

{ewc HLP95EN.DLL,DYNALINK,"See Also":"vbcmdProcedureC;vbproBooksOnlineJumpTopic"}
HLP95EN.DLL,DYNALINK,"Specifics":"vbcmdProcedureS"}

{ewc

Inserts a new **Sub**, **Function**, or **Property** procedure into the active module.

Not available if the module is not active.


Toolbar shortcut: .

Module and Class Module Commands (Insert Menu)


{ewc HLP95EN.DLL,DYNALINK,"See Also":"vbcmdNewFormC;vbproBooksOnlineJumpTopic"}
HLP95EN.DLL,DYNALINK,"Specifics":"vbcmdNewFormS"}

{ewc

Module Inserts a new standard module and adds it to your active project.

Toolbar shortcut: 

Class Module Creates a new class module and adds it to your active project.

Toolbar shortcut: 

File Command (Insert Menu)

{ewc HLP95EN.DLL,DYNALINK,"See Also":"vbcmdFileC;vbproBooksOnlineJumpTopic"} {ewc
HLP95EN.DLL,DYNALINK,"Specifics":"vbcmdFileS"}

Displays the Insert File dialog box so that you can insert text from an existing module at the current cursor position.


Not available when no editor is open.

Tab Order Command (View Menu)

{ewc HLP95EN.DLL,DYNALINK,"See Also":":vbcmdTabOrderC;vbproBooksOnlineJumpTopic"}
HLP95EN.DLL,DYNALINK,"Specifics":":vbcmdTabOrderS"}

{ewc

Displays the Tab Order dialog box for the active Form.

Toolbar shortcut: 

Group and Ungroup Commands (Format Menu)

{ewc HLP95EN.DLL,DYNALINK,"See Also":"vbcmdGroupC;vbproBooksOnlineJumpTopic"}
HLP95EN.DLL,DYNALINK,"Specifics":"vbcmdGroupS"}


{ewc

Groups and ungroups selected objects

Group Creates a group.

Note You can still select a single object from within a group and change its properties.

Note You cannot create groups within a group (nested grouping).

Toolbar shortcut: .

Ungroup Ungroups the objects that were previously grouped.

Toolbar shortcut: .


Arrange Buttons Commands (Format Menu)

{ewc HLP95EN.DLL,DYNALINK,"See Also": "vbcmdArrangeC;vbproBooksOnlineJumpTopic"}
HLP95EN.DLL,DYNALINK,"Specifics": "vbcmdArrangeS"}


{ewc

Arranges selected command buttons along the bottom or edge of a form.

Bottom Arranges to the bottom left side of the form with equal spacing between each of them.

Toolbar shortcut: 

Right Arranges to the top right side of the form with equal spacing between each of them.


Toolbar shortcut: 

Size to Fit Command (Format Menu)

{ewc HLP95EN.DLL,DYNALINK,"See Also":"vbcmdSizeToFitC;vbproBooksOnlineJumpTopic"}
HLP95EN.DLL,DYNALINK,"Specifics":"vbcmdSizeToFitS"}

{ewc

Changes the height and width of an object to fit its contents.

Toolbar shortcut: 

References Command (Tools Menu)

{ewc HLP95EN.DLL,DYNALINK,"See Also":"vbcmdReferenceC;vbproBooksOnlineJumpTopic"} {ewc
HLP95EN.DLL,DYNALINK,"Specifics":"vbcmdReferenceS"}

Displays the References dialog box. This dialog box allows you to add an object library or type library reference to your project. This makes another application's objects available in your code. Once a reference is set, the referenced objects are displayed in the Object Browser.

You can also add references to other loaded and saved projects. If a project has not been saved, it appears as "UNSAVED: <ProjectName>" and you will be unable to make a reference to it.

Only available at design time.

Additional Controls Command (Tools Menu)

{ewc HLP95EN.DLL,DYNALINK,"See Also":"vbcmdCustomControlsVBEC;vbproBooksOnlineJumpTopic"} {ewc HLP95EN.DLL,DYNALINK,"Specifics":"vbcmdCustomControlsVBES"}


Displays the Additional Controls dialog box where you can add controls or insertable objects (such as a Microsoft Word Document) to the Toolbox.

<Project Name> Properties Command (Tools Menu)

{ewc HLP95EN.DLL,DYNALINK,"See Also":"vbcmdProjectPropertiesC;vbproBooksOnlineJumpTopic"}
HLP95EN.DLL,DYNALINK,"Specifics":"vbcmdProjectPropertiesS"}

{ewc

Displays the Project Properties dialog box where you can set protection for and options specific to your project.

Toolbar shortcut: .

Delete Page Command (Shortcut Menu)

{ewc HLP95EN.DLL,DYNALINK,"See Also":"vacmdDeletePageContextC;vbproBooksOnlineJumpTopic"}
HLP95EN.DLL,DYNALINK,"Specifics":"vacmdDeletePageContextS"}

{ewc

Permanently deletes the selected page from the Toolbox.

Import Page and Export Page Commands (Shortcut Menu)

{ewc HLP95EN.DLL,DYNALINK,"See Also":"vacmdlImportPageContextC;vbproBooksOnlineJumpTopic"} {ewc HLP95EN.DLL,DYNALINK,"Specifics":"vacmdlImportPageContextS"}

Imports and exports pages.

Import Page Opens the Import Page dialog box so that you can find and select the page you want to add to the Toolbox.

The Import Page dialog box is the Windows Open common dialog box.

Export Page Opens the Export Page dialog box so that you can select a location and name for the selected page that you want to export from the Toolbox.

The Export Page dialog box is the same as the Windows Save common dialog box.

New Page Command (Shortcut Menu)

{ewc HLP95EN.DLL,DYNALINK,"See Also":"vacmdNewPageContextC;vbproBooksOnlineJumpTopic"} {ewc HLP95EN.DLL,DYNALINK,"Specifics":"vacmdNewPageContextS"}

Adds a new tabbed page with the name, New Page. You can use the Rename command on the shortcut menu to change it.

You can have more than one page with the name, New Page.

When you add a new page to the Toolbox, the page automatically contains the Pointer tool.

Rename Command (Shortcut Menu)

{ewc HLP95EN.DLL,DYNALINK,"See Also":"vacmdRenameContextC;vbproBooksOnlineJumpTopic"} {ewc
HLP95EN.DLL,DYNALINK,"Specifics":"vacmdRenameContextS"}

Displays the Rename dialog box so that you can change the name of the selected page in your Toolbox and create a shortcut key or tip.

Dialog Box Options

Caption Allows you to give a new name to the tabbed page.

Control Tip Text Allows you to create a tip for the tabbed page.

Delete <item> Command (Shortcut Menu)

{ewc HLP95EN.DLL,DYNALINK,"See Also":"vacmdDeleteItemContextC;vbproBooksOnlineJumpTopic"} {ewc
HLP95EN.DLL,DYNALINK,"Specifics":"vacmdDeleteItemContextS"}

Deletes the selected item from the Toolbox. You can add the item again using the Additional Controls command on the shortcut menu.

Customize <item> Command (Shortcut Menu)

{ewc HLP95EN.DLL,DYNALINK,"See Also":"vacmdCustomizeItemShortcutC;vbproBooksOnlineJumpTopic"} {ewc HLP95EN.DLL,DYNALINK,"Specifics":"vacmdCustomizeItemShortcutS"}

Displays the Customize Control dialog box where you can change the tool tip text, or the control icon for the selected item.

Additional Controls Command (Shortcut Menu)

{ewc HLP95EN.DLL,DYNALINK,"See Also":"vacmdCustomizeControlsShortcutC;vbproBooksOnlineJumpTopic"} {ewc
HLP95EN.DLL,DYNALINK,"Specifics":"vacmdCustomizeControlsShortcutS"}

Displays the Customize Controls dialog box so that you can add controls and insertable objects.

Insert Object Command (Shortcut Menu)

{ewc HLP95EN.DLL,DYNALINK,"See Also":"vacmdlInsertObjectContextC;vbproBooksOnlineJumpTopic"}
HLP95EN.DLL,DYNALINK,"Specifics":"vacmdlInsertObjectContextS"}

{ewc

Displays the Insert Object dialog box.

Copy Here and Move Here Commands (Shortcut Menu)

{ewc HLP95EN.DLL,DYNALINK,"See Also":"vacmdCopyMoveHereShortcutC;vbproBooksOnlineJumpTopic"}
HLP95EN.DLL,DYNALINK,"Specifics":"vacmdCopyMoveHereShortcutS"}

{ewc

Allows you to use a drag-and-drop operation on controls on the form. Select a control using the right mouse button, hold it down and then drag the control. When you release the mouse button, a shortcut menu appears with the following commands.

Copy Here Copies the selected control to the location where you dragged your cursor.

Move Here Moves the selected control to the location where you dragged your cursor.

Cancel Cancels the operation.

File Menu

{ewc HLP95EN.DLL,DYNALINK,"See Also":"vbmnuFileMenuVBEC;vbproBooksOnlineJumpTopic"}
HLP95EN.DLL,DYNALINK,"Specifics":"vbmnuFileMenuVBES"}

{ewc

Save <host document>

Import File

Export File

Remove <Item>

Print

Close & Return to <host application>

Edit Menu

{ewc HLP95EN.DLL,DYNALINK,"See Also":"vbmnuEditMenuVBEC;vbproBooksOnlineJumpTopic"}
HLP95EN.DLL,DYNALINK,"Specifics":"vbmnuEditMenuVBES"}

{ewc

Undo

Redo

Cut

Copy

Paste

Clear or Delete

Select All

Find

Find Next

Replace

Indent

Outdent

List Properties/Methods

List Constants

Quick Info

Parameter Info

Complete Word

Bookmarks

View Menu

{ewc HLP95EN.DLL,DYNALINK,"See Also":"vbmnuViewMenuVBEC;vbproBooksOnlineJumpTopic"}
HLP95EN.DLL,DYNALINK,"Specifics":"vbmnuViewMenuVBES"}

{ewc

Code

Object

Definition

Last Position

Object Browser

Immediate Window

Locals Window

Watch Window

Call Stack

Project Explorer

Properties Window

Toolbox

Tab Order

Toolbars

<Host application>

Insert Menu

{ewc HLP95EN.DLL,DYNALINK,"See Also":"vbmnuInsertMenuVBEC;vbproBooksOnlineJumpTopic"}
HLP95EN.DLL,DYNALINK,"Specifics":"vbmnuInsertMenuVBES"}

{ewc

Procedure

UserForm

Module

Class Module

Object

File

Format Menu

{ewc HLP95EN.DLL,DYNALINK,"See Also":"vbmnuFormatMenuVBEC;vbproBooksOnlineJumpTopic"}
HLP95EN.DLL,DYNALINK,"Specifics":"vbmnuFormatMenuVBES"}

{ewc

Align

Make Same Size

Size to Fit

Size to Grid

Horizontal Spacing

Vertical Spacing

Center in Form

Arrange Buttons

Group

Ungroup

Order

Debug Menu

{ewc HLP95EN.DLL,DYNALINK,"See Also":"vbmnuDebugMenuVBEC;vbproBooksOnlineJumpTopic"}
HLP95EN.DLL,DYNALINK,"Specifics":"vbmnuDebugMenuVBES"}

{ewc

Compile <project>

Step Into

Step Over

Step Out

Run to Cursor

Add Watch

Edit Watch

Quick Watch

Toggle Breakpoint

Clear All Breakpoints

Set Next Statement

Show Next Statement

Run Menu

{ewc HLP95EN.DLL,DYNALINK,"See Also":"vbmnuRunMenuVBEC;vbproBooksOnlineJumpTopic"}
HLP95EN.DLL,DYNALINK,"Specifics":"vbmnuRunMenuVBES"}

{ewc

Run Sub/UserForm or Run Macro

Break

Reset <project>

Design Mode

Tools Menu

{ewc HLP95EN.DLL,DYNALINK,"See Also":"vbmnuToolsMenuVBEC;vbproBooksOnlineJumpTopic"}
HLP95EN.DLL,DYNALINK,"Specifics":"vbmnuToolsMenuVBES"}

{ewc

References

Additional Controls

Macros

Options

<Project> Properties

Help Menu

{ewc HLP95EN.DLL,DYNALINK,"See Also":"vbmnuHelpMenuVBEC;vbproBooksOnlineJumpTopic"} {ewc HLP95EN.DLL,DYNALINK,"Specifics":"vbmnuHelpMenuVBES"}

Microsoft Visual Basic Help

If the Office Assistant is not currently visible, displays the Office Assistant and Office Assistant balloon. If the Office Assistant is visible, shows the Office Assistant balloon.

Toolbar shortcut: . Keyboard shortcut: F1.

Contents and Index

Displays the Visual Basic Help Contents and Index dialog box where you can search for help using an index, or full text search.

Toolbar shortcut: .

Microsoft on the Web

Connects you to the Internet where you can get additional information and support.

To use this command, you must have a modem or network connection to the Internet and a Worldwide Web browser.

About Microsoft Visual Basic

Displays a dialog box with the version number, a copyright notice, and system information.

Standard Toolbar

{ewc HLP95EN.DLL,DYNALINK,"See Also":"vbproBooksOnlineJumpTopic;vbrgnStandardVBEC"}
HLP95EN.DLL,DYNALINK,"Specifics":"vbrgnStandardVBES"}

{ewc



Contains buttons that are shortcuts to some commonly used menu items.

You can click a toolbar button once to carry out the action represented by that button. You can select the Show ToolTips option in the General tab of the Options dialog box if you want to display ToolTips for the toolbar buttons.

Toolbar Buttons



View <host application>

Toggles between the host application and the active Visual Basic document.

Insert

Opens a menu so that you can insert one of the following objects to your active project. The icon changes to the last object you added. The default is the form.



— UserForm



— Module



— Class Module



— Procedure



Save <host document name>

Saves the host document including the project and all of its components—forms and modules.



Cut

Removes the selected control or text and places it on the Clipboard.



Copy

Copies the selected control or text onto the Clipboard.



Paste

Inserts the contents of the Clipboard at the current location.



Find

Opens the Find dialog box and searches for the specified text in the Find What box.



Undo

Reverses the last editing action.



Redo

Restores the last text editing Undo actions if no other actions have occurred since the last Undo.



Run Sub/UserForm or Run Macro

Runs the current procedure if the cursor is in a procedure, runs the UserForm if a UserForm is currently active, or runs a macro if neither the Code window nor a UserForm is active.



Break

Stops execution of a program while it's running and switches to break mode.



Reset <project>

Clears the execution stack module level variables and resets the project.



Design Mode

Turns design mode off and on.



Project Explorer

Displays the Project Explorer, which displays a hierarchical list of the currently open projects and their contents.



Properties Window

Opens the Property window so you can view the properties of the selected control.



Object Browser

Displays the Object Browser, which lists the object libraries, the type library, classes, methods, properties, events, and constants you can use in code, as well as the modules and procedures you defined for your project.



Toolbox

Displays or hides the Toolbox which contains all of the controls and insertable objects (such as a Microsoft Excel Chart) available to your application. This is only available when a UserForm is active.

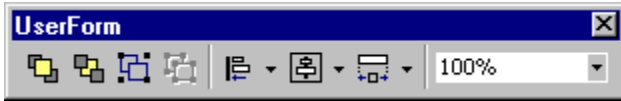


Office Assistant

Opens the Office Assistant where you can get help for the command, dialog box, or window that is active.

UserForm Toolbar

{ewc HLP95EN.DLL,DYNALINK,"See Also":"vbproBooksOnlineJumpTopic;vbrgnFormDesignerCommandBarC"} {ewc HLP95EN.DLL,DYNALINK,"Specifics":"vbrgnFormDesignerCommandBarS"}



Contains buttons that are shortcuts to some commonly used menu items that are useful for working with forms.

You can click a toolbar button once to carry out the action represented by that button. You can select the Show ToolTips option in the General tab of the Options dialog box if you want to display ToolTips for the toolbar buttons.

Toolbar Buttons



Bring To Front

Moves the selected objects to the front of all other objects on a form.



Send To Back

Moves the selected objects behind all other objects on a form.



Group

Creates a group of the selected objects.



Ungroup

Align



Lefts — Aligns the horizontal position of the selected objects, putting the left-most edges in line.



Centers — Aligns the horizontal position of the selected objects, putting the centers in line.



Rights — Aligns the horizontal position of the selected objects, putting the right-most edges in line.



Tops — Aligns the vertical position of the selected objects, putting the tops in line.



Middles — Aligns the vertical position of selected objects, putting the middles in line.



Bottoms — Aligns the vertical position of the selected objects, putting the bottoms in line.



to Grid — Aligns the top left of the selected object to the closest grid. The object is not resized.

Center



Horizontally — Centers the selected objects horizontally.



Vertically — Centers the selected objects vertically.

Make Same Size



Width — Adjusts width.



Height — Adjusts height.



Both — Adjusts both the width and the height.



Zoom

Reduces or enlarges the display of all controls on the UserForm. You can set any magnification between 10 and 400 percent.

Locals Window

Displays the Locals window.



Immediate Window

Displays the Immediate window.



Watch Window

Displays the Watch window.



Quick Watch

Displays the Quick Watch dialog box with the current value of the selected expression.



Call Stack

Displays the Calls dialog box, which lists the currently active procedure calls (procedures in the application that have started but are not completed).



Toggle Breakpoint

Sets or removes a breakpoint at the current line.



Comment Block

Adds comment character to the beginning of each line of a selected block of text.



Uncomment Block

Removes the comment character from each line of a selected block of text.



Toggle Bookmark

Toggles a bookmark on or off for the active line in the Code window.



Next Bookmark

Moves the focus to the next bookmark in the bookmark stack.



Previous Bookmark

Moves the focus to the previous bookmark in the bookmark stack.



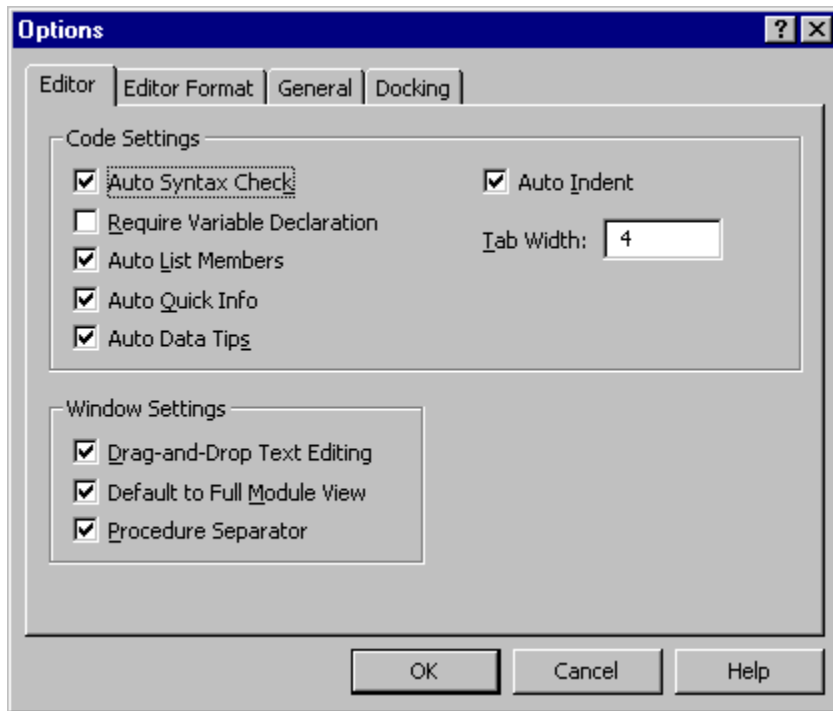
Clear All Bookmarks

Removes all bookmarks.

Options Dialog Box

{ewc HLP95EN.DLL,DYNALINK,"See Also":"vbdlgOptionsDialogVBEC;vbproBooksOnlineJumpTopic"}
HLP95EN.DLL,DYNALINK,"Specifics":"vbdlgOptionsDialogVBES"}

{ewc



Allows you to change default settings for the Visual Basic development environment.

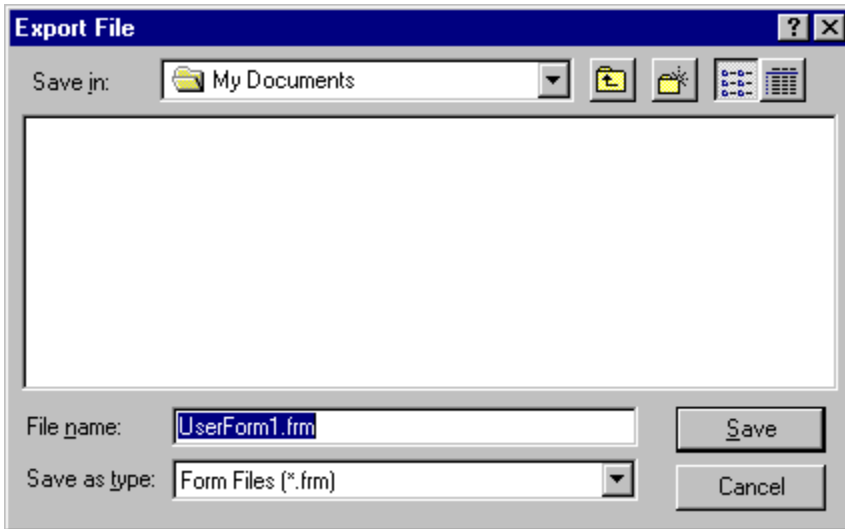
The Options dialog box has the following tabs:

- Editor
- Editor Format
- General
- Docking

Export File Dialog Box

{ewc HLP95EN.DLL,DYNALINK,"See Also":"vadlgExportFileDialogC;vbproBooksOnlineJumpTopic"}
HLP95EN.DLL,DYNALINK,"Specifics":"vadlgExportFileDialogS"}

{ewc



Allows you to give a name to the exported file and choose a location where it will be saved.

Dialog Box Options

Save in

Select the folder where you want to store the file.

Up One Level



Shows a list of folders or drives one level above the current folder.

Create New Folder



Creates a new folder.

Details



Shows the folder or documents in a list that includes the folder or document icon and name, its size (documents only), type, and the date and time it was last modified.

List



Shows the folders or documents in a list format that includes the folder or document icon and its name.

File name

Unless you specify a filename extension, Visual Basic automatically adds the default filename extension .frm for form, .bas for modules, or .cls for class modules.

List Files of Type

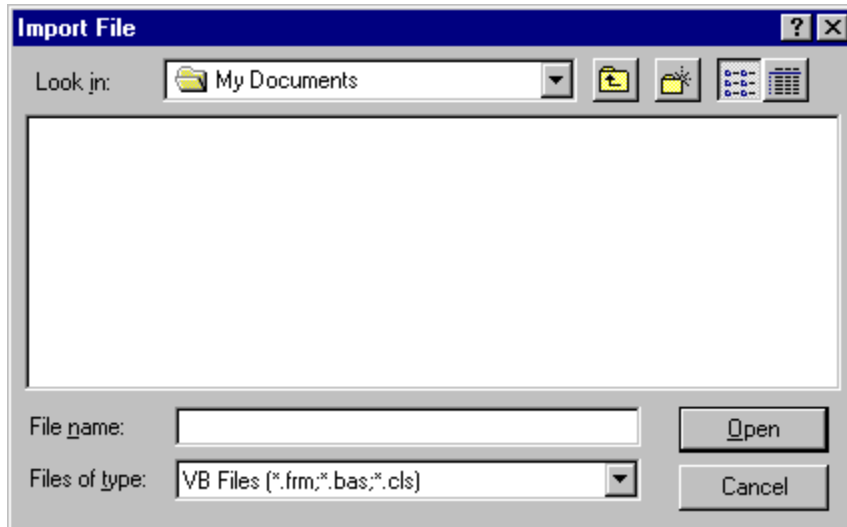
Select a file type from the list:

- Form Files (*.frm) — Lists all forms.
- Basic Files (*.bas) — Lists all standard modules.
- Class Files (*.cls) — Lists all class modules.

Import File Dialog Box

{ewc HLP95EN.DLL,DYNALINK,"See Also":"vadlgImportFileDialogC;vbproBooksOnlineJumpTopic"}
HLP95EN.DLL,DYNALINK,"Specifics":"vadlgImportFileDialogS"}

{ewc



Allows you to choose the file that you want to import.

Dialog Box Options

Look in

Select the location of the project you want to open.

Up One Level



Shows a list of folders or drives one level above the current folder.

Create New Folder



Creates a new folder.

List



Shows the folders or projects in a list format that includes the folder or project icon and its name.

Details



Shows the folders or projects in a list that includes the folder or project icon and name, its size, type, and the date and time it was last modified.

File name

Select or type the name of the file you want to import.

List files of type

Select a file type; the default is Visual Basic Project Files (*.frm, *.bas, *.cls). Files of the selected type will appear in the File Name list box.

Open

Opens the selected file.

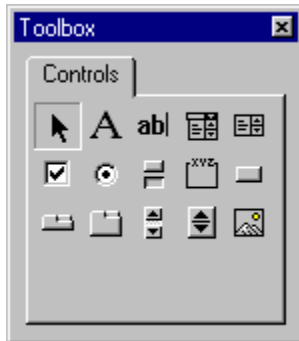
Cancel

Closes the dialog box without opening a new project.

Toolbox

{ewc HLP95EN.DLL,DYNALINK,"See Also":"f3objMultiPage;vargnToolboxC;vbproBooksOnlineJumpTopic"}
HLP95EN.DLL,DYNALINK,"Specifics":"vargnToolboxS"}

{ewc



Displays the standard Visual Basic controls plus any ActiveX controls and insertable objects you have added to your project.

- You can customize the Toolbox by adding pages to it or by adding controls using the Additional Controls command from the Tools menu.

When you add a page, a Select Objects tool is always available on the page.

Standard Toolbox Controls



Select Objects

Select Objects is the only item in the Toolbox that doesn't draw a control. When you select it, you can only resize or move a control that has already been drawn on a form.



Label

Allows you to have text that you do not want the user to change, such as a caption under a graphic.



TextBox

Holds text that the user can either enter or change.



ComboBox

Allows you to draw a combination list box and text box. The user can either choose an item from the list or enter a value in the text box.



ListBox

Use to display a list of items from which the user can choose. The list can be scrolled if it has more items than can be displayed at one time.



CheckBox

Creates a box that the user can easily choose to indicate if something is true or false, or to display multiple choices when the user can choose more than one.



RadioButton

Allows you to display multiple choices from which the user can choose only one.



ToggleButton

Creates a button that toggles on and off.



Frame

Allows you to create a graphical or functional grouping for controls. To group controls, draw the Frame first, and then draw controls inside the frame.



CommandButton

Creates a button the user can choose to carry out a command.



TabStrip

Allows you to define multiple pages for the same area of a window or dialog box in your application.



MultiPage

Presents multiple screens of information as a single set.



ScrollBar

Provides a graphical tool for quickly navigating through a long list of items or a large amount of information, for indicating the current position on a scale, or as an input device or indicator of speed or quantity.



SpinButton

A spinner control you can use with another control to increment and decrement numbers. You can also use it to scroll back and forth through a range of values or a list of items.



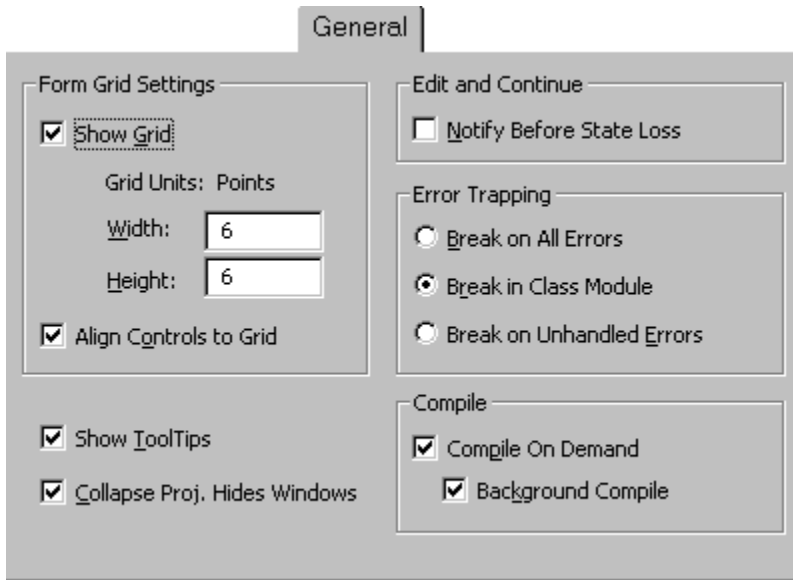
Image

Displays a graphical image from a [bitmap](#), [icon](#), or [metafile](#) on your form. Images displayed in an **Image** control can only be decorative and use fewer resources than a **PictureBox**.

General Tab (Options Dialog Box)

{ewc HLP95EN.DLL,DYNALINK,"See Also":"vbdlgOptionsGeneralTabVBEC;vbproBooksOnlineJumpTopic"}
HLP95EN.DLL,DYNALINK,"Specifics":"vbdlgOptionsGeneralTabVBES"}

{ewc



Specifies the settings, error handling, and compile settings for your current Visual Basic project.

Tab Options

Form Grid Settings Determines the appearance of the form when it is edited.

- Show Grid — Determines whether to show the grid.
- Grid Units — Displays the grid units used for the form.
- Width — Determines the width of grid cells on a form (2 to 60 points).
- Height — Determines the height of grid cells on a form (2 to 60 points).
- Align Controls to Grid — Automatically positions the outer edges of controls on grid lines.

Show ToolTips Displays ToolTips for the toolbar buttons.

Collapse Proj. Hides Windows Determines whether the project, UserForm, object, or module windows are closed automatically when a project is collapsed in the Project Explorer.

Edit and Continue

- Notify Before State Loss — Determines whether you will receive a message notifying you that the action requested will cause the all module level variables to be reset for a running project.

Error Trapping Determines how errors are handled in the Visual Basic development environment. Setting this option affects all instances of Visual Basic started after you change the setting.

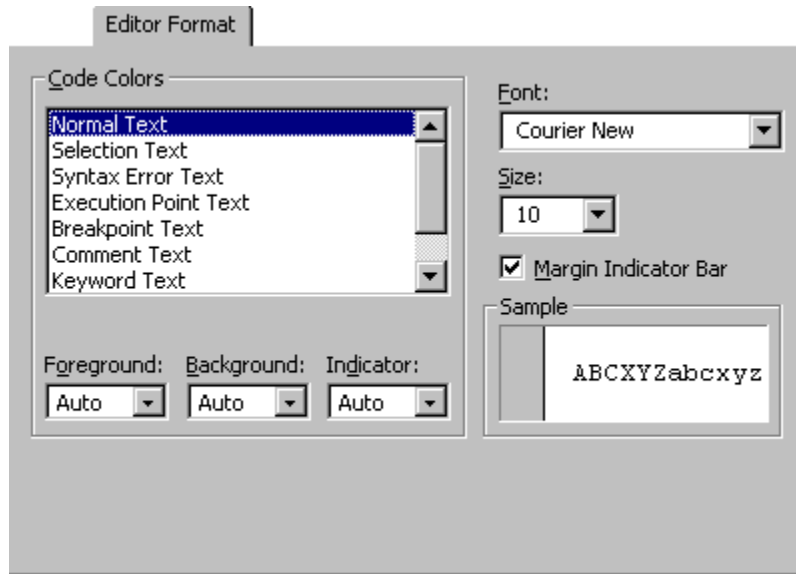
- Break on All Errors — Any error causes the project to enter break mode, whether or not an error handler is active and whether or not the code is in a class module.
- Break in Class Module — Any unhandled error produced in a class module causes the project to enter break mode at the line of code in the class module which produced the error.
- Break on Unhandled Errors — If an error handler is active, the error is trapped without entering break mode. If there is no active error handler, the error causes the project to enter break mode. An unhandled error in a class module, however, causes the project to enter break mode on the line of code that invoked the offending procedure of the class.

Compile

- Compile On Demand — Determines whether a project is fully compiled before it starts, or whether code is compiled as needed, allowing the application to start sooner.
- Background Compile — Determines whether idle time is used during run time to finish compiling the project in the background. Background Compile can improve run time execution speed. This feature is not available unless Compile on Demand is also selected.

Editor Format Tab (Options Dialog Box)

{ewc HLP95EN.DLL,DYNALINK,"See Also":"vbproBooksOnlineJumpTopic;vbgrnEditorFormatTabOptionsDialogBoxVBEC"}
{ewc HLP95EN.DLL,DYNALINK,"Specifics":"vbgrnEditorFormatTabOptionsDialogBoxVBES"}



Specifies the appearance of your Visual Basic code.

Tab Options

Code Colors Determines the foreground and background colors used for the type of text selected in the list box.

- Color Text List — Lists the text items that have customizable colors.
- Foreground — Specifies the foreground color for the text selected in the Color Text List.
- Background — Specifies the background color for text selected in the Color Text List
- Indicator — Specifies the margin indicator color.

Font Specifies the font used for all code.

Size Specifies the size of the font used for code.

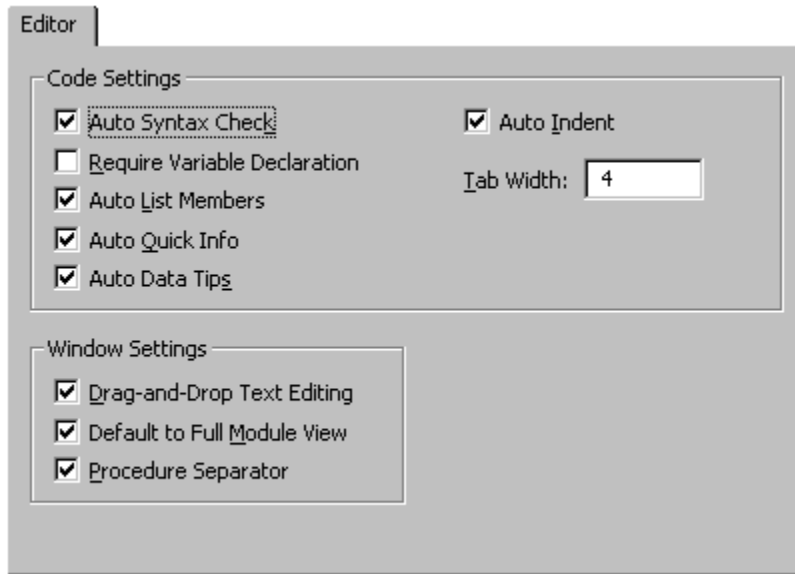
Margin Indicator Bar Makes the margin indicator bar visible or invisible.

Sample Displays sample text for the font, size, and color settings.

Editor Tab (Options Dialog Box)

{ewc HLP95EN.DLL,DYNALINK,"See Also":"vbproBooksOnlineJumpTopic;vbrgnFormatOptionsVBEC"}
HLP95EN.DLL,DYNALINK,"Specifics":"vbrgnFormatOptionsVBES"}

{ewc



Specifies the Code window and Project window settings.

Tab Options

Code Settings

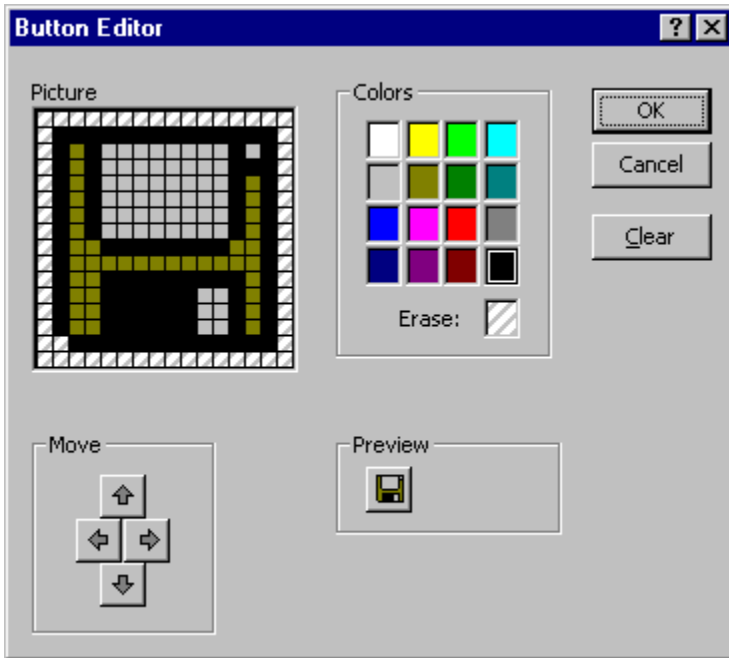
- Auto Syntax Check — Determines whether Visual Basic should automatically verify correct syntax after you enter a line of code.
- Require Variable Declaration — Determines whether explicit variable declarations are required in modules. Selecting this adds the **Option Explicit** statement to general declarations in any new module.
- Auto List Member — Displays a list that contains information that would logically complete the statement at the current insertion point.
- Auto Quick Info — Displays information about functions and their parameters as you type.
- Auto Data Tips — Displays the value of the variable over which your cursor is placed. Available only in Break mode.
- Auto Indent — Allows you to tab the first line of code; all subsequent lines will start at that tab location.
- Tab Width — Sets the tab width, which can range from 1 to 32 spaces; the default is 4 spaces.

Window Settings

- Drag-and-Drop Text Editing — Allows you to drag and drop elements within the current code and from the Code window into the Immediate or Watch windows,
- Default to Full Module View — Sets the default state for new modules to allow you to look at procedures in the Code window either as a single scrollable list or only at one procedure at a time. It does not change the way currently open modules are viewed.
- Procedure Separator — Allows you to display or hide separator bars that appear at the end of each procedure in the Code window.

Button Editor Dialog Box

{ewc HLP95EN.DLL,DYNALINK,"See Also":"vadlgEditPictureDialogC;vbproBooksOnlineJumpTopic"} {ewc HLP95EN.DLL,DYNALINK,"Specifics":"vadlgEditPictureDialogS"}



Provides the tools to modify Toolbox icons.

Dialog Box Options

Picture Shows the icon pixel by pixel.

Move Moves the picture around so that you have access to all parts of it.



— Moves the picture up one row each time you click it until the top row of pixels is visible.



— Moves the picture down one row each time you click it until the bottom row of pixels is visible.



— Moves the picture to the right one column each time you click it until the right-most column is visible.



— Moves the picture to the left one column each time you click it until the left-most column is visible.

Colors Changes the color of the pixel. You click on the color you want and then click on the pixel that you want to appear with that color.

Erase — Removes the color from the pixel you click on after you click on the Erase box.

Preview Shows you how your icon will appear as you make the changes.

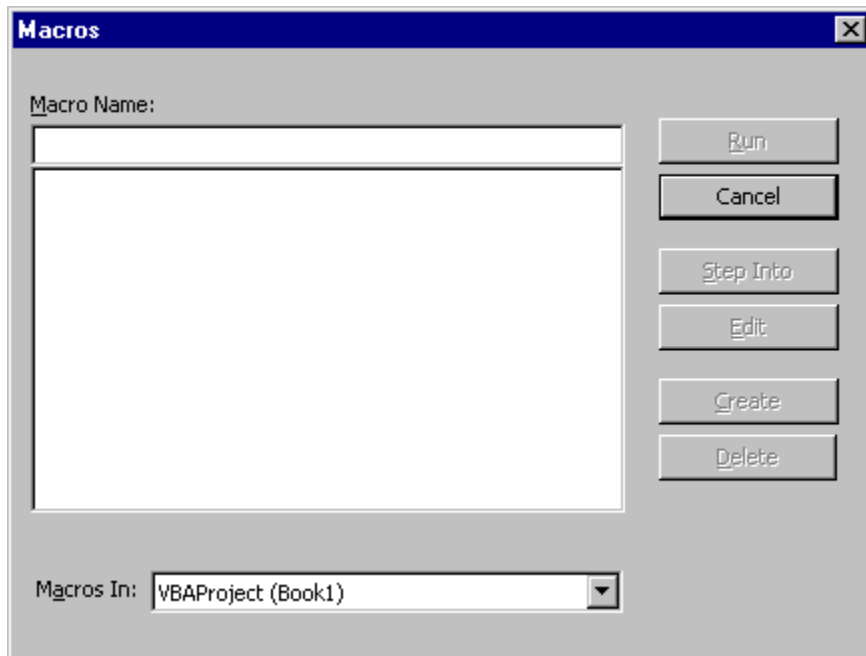
Clear Clears all of the color and picture from the picture box.

OK Assigns the picture to the control.

Macros Dialog Box

{ewc HLP95EN.DLL,DYNALINK,"See Also":"vadlgMacroDialogC;vbproBooksOnlineJumpTopic"}
HLP95EN.DLL,DYNALINK,"Specifics":"vadlgMacroDialogS"}

{ewc



Allows you to run, edit, or delete the selected macro. You can also create a macro from the Macros dialog box.

Dialog Box Options

Macro Name Contains the name of the selected macro or is blank if there are no macros in the Macro Box.

Macro Box Lists the available macros in the Project selected in the Macros In box.

Macros In Lists the available projects.

Run Runs the selected macro.

Step Into Highlights the first line of the macro and places the Current Execution line Indicator.

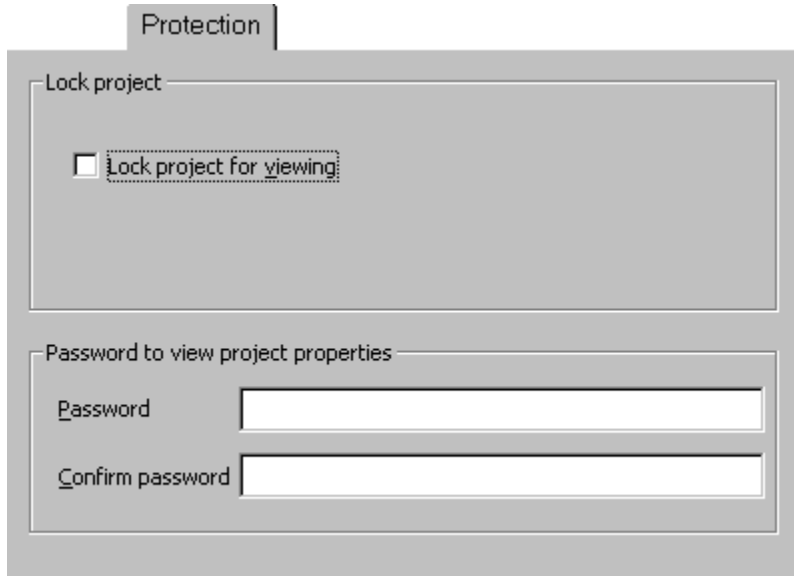
Edit Opens the Code window with the select macros visible so you can modify your macro.

Create Opens a module in the Code window so you can create a new macro.

Delete Removes the selected macro from your project.

Protection Tab (Project Properties Dialog Box)

{ewc HLP95EN.DLL,DYNALINK,"See Also":"vbdlgProtectionTabProjectSettingsDialogBoxC;vbproBooksOnlineJumpTopic"}
{ewc HLP95EN.DLL,DYNALINK,"Specifics":"vbdlgProtectionTabProjectSettingsDialogBoxS"}



The image shows a dialog box titled "Protection" with two main sections. The first section, "Lock project", contains a checkbox labeled "Lock project for viewing". The second section, "Password to view project properties", contains two text input fields: "Password" and "Confirm password".

Sets the protection for your project.

Dialog Box Options

Lock Project Provides a way to lock your project and prevent someone from changing it.

- Lock project for viewing — Locks the project so that it cannot be viewed or edited.

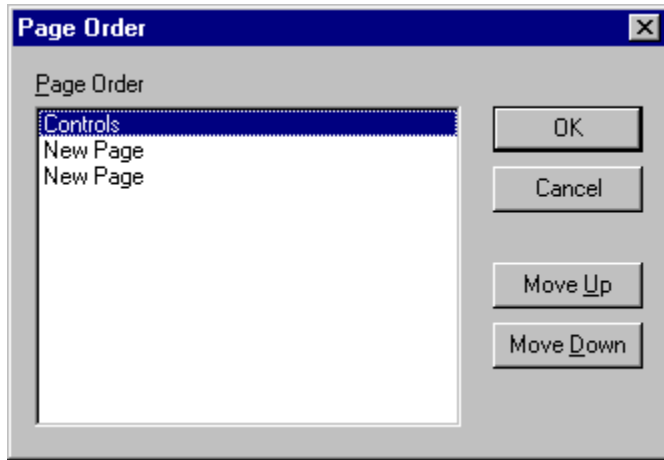
Password to view project properties Sets the passwords that allow someone to view the project properties.

- Password — Sets the password for the project. If you do not check the Lock Project for Viewing option but set a password, you will be required to enter a password to open the Property window the next time you open the project.
- Confirm password — Confirms the password typed in the Password box. The contents of the Confirm Password box and the Password box must match when you press OK or you get an error.

Page Order Dialog Box

{ewc HLP95EN.DLL,DYNALINK,"See Also":"vadlgPageOrderDialogC;vbproBooksOnlineJumpTopic"}
HLP95EN.DLL,DYNALINK,"Specifics":"vadlgPageOrderDialogS"}

{ewc



Allows you to change the order of your tabbed pages.

Dialog Box Options

Page Order Lists the tabbed pages in order from the left to the right.

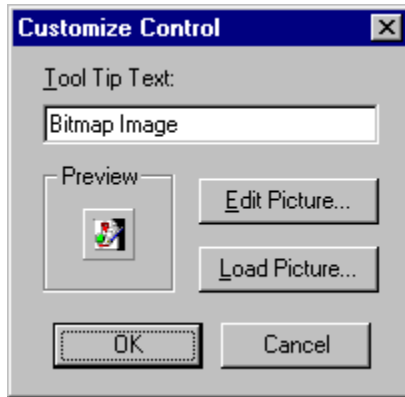
Move Up Moves the selected page up one place in the list each time you click it.

Move Down Moves the selected page down one place in the list each time you click it.

Customize Control Dialog Box

{ewc HLP95EN.DLL,DYNALINK,"See Also":"vadlgCustomizeControlDialogC;vbproBooksOnlineJumpTopic"}
HLP95EN.DLL,DYNALINK,"Specifics":"vadlgCustomizeControlDialogS"}

{ewc



Allows you to add ToolTips and modify the icon for your control.

Dialog Box Options

Tool Tip Text Contains the text for the tool tip.

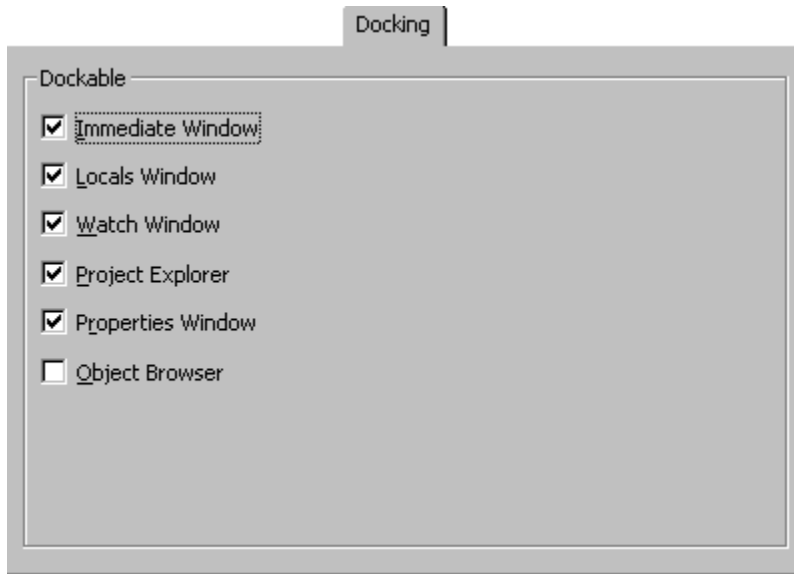
Preview Shows the icon that you choose to use for the control.

Edit Picture Displays the Edit Picture dialog box where you can modify the icon.

Load Picture Displays the Load Picture dialog box. The Load Picture dialog box is a standard Open common dialog box.

Docking Tab (Options Dialog Box)

{ewc HLP95EN.DLL,DYNALINK,"See Also":"vadlgDockingTabEnvironmentOptionsDialogC;vbproBooksOnlineJumpTopic"}
{ewc HLP95EN.DLL,DYNALINK,"Specifics":"vadlgDockingTabEnvironmentOptionsDialogS"}



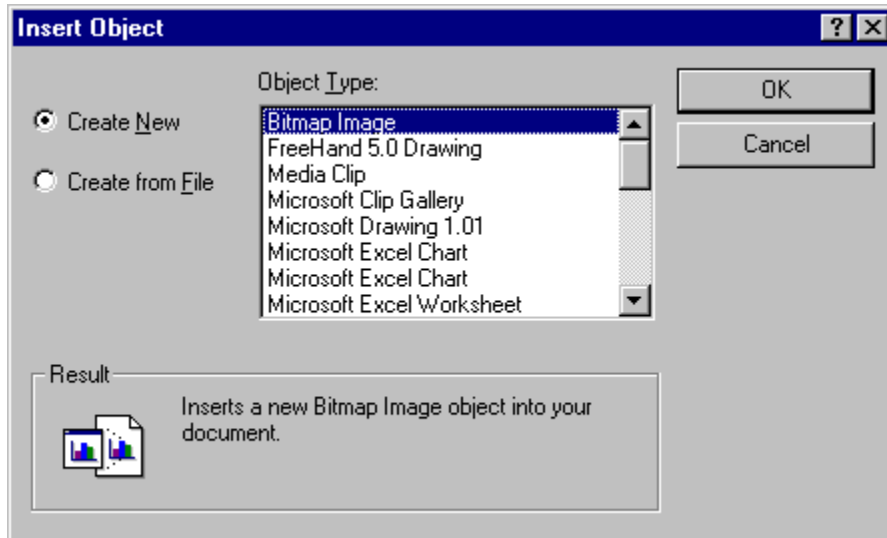
Allows you to choose which windows you want to be dockable. A window is docked when it is attached or "anchored" to one edge of other dockable or application windows. When you move a dockable window, it "snaps" to the location. A window is not dockable when you can move it anywhere on the screen and leave it there.

Select the windows you want to be dockable and clear those that you do not. Any, none, or all of the windows in the list can be docked.

Insert Object Dialog Box

{ewc HLP95EN.DLL,DYNALINK,"See Also":"\vadlgInsertObjectDialogC;vbproBooksOnlineJumpTopic"}
HLP95EN.DLL,DYNALINK,"Specifics":"\vadlgInsertObjectDialogS"}

{ewc



Allows you to insert new controls into your form by either creating one or choosing one from a file.

Dialog Box Options

Create New Makes the Object Type list visible so you can choose the type of object you want to create.

- Object Type — Lists the available objects.

Create From File Makes the File box and Browse button visible so you can choose the file you want to insert as an object into your form.

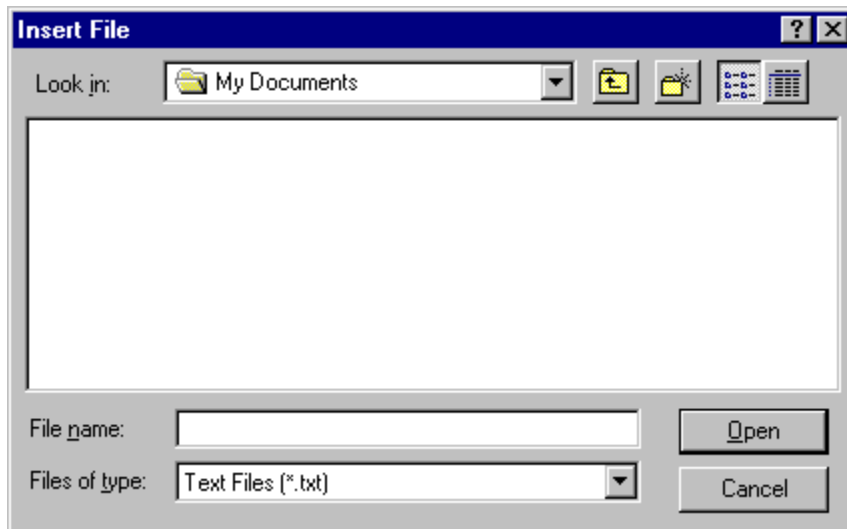
- File — Lists the name and path for the file you want to insert.
- Browse — Opens the standard Browse dialog box so you find the file you want to insert.

Result Displays information about the dialog box option or the object you choose.

Insert File Dialog Box

{ewc HLP95EN.DLL,DYNALINK,"See Also":"vadlgInsertFileDialogC;vbproBooksOnlineJumpTopic"}
HLP95EN.DLL,DYNALINK,"Specifics":"vadlgInsertFileDialogS"}

{ewc



Allows you to look for and insert a file into a module in your project.

Dialog Box Options

Look in

Displays the computers, servers, drives, and folders available on your computer that you can use to locate the project you want to open.

Up One Level



Shows a list of folders or drives one level above the current server, computer, or folder.

Create New Folder



Creates a new folder.

List



Shows the folders or documents in a list format that includes the folder or document icon and its name.

Details



Shows the folder or documents in a list that includes the folder or document icon and name, its size (documents only), type, and the date and time it was last modified.

File name

Select or type the name of the file you want to insert.

Files of type

Select a file type; the default is Text Files (*.txt). Files of the selected type will appear in the File Name list box.

Open

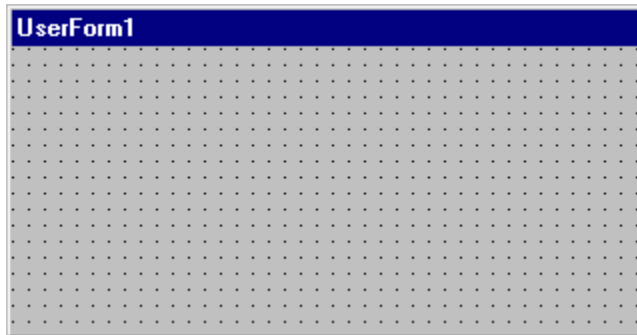
Inserts the selected file.

Cancel

Closes the dialog box without inserting a new project.

UserForm Window

```
{ewc HLP95EN.DLL,DYNALINK,"See Also":"vargnUserFormC"}  
HLP95EN.DLL,DYNALINK,"Specifics":"vargnUserFormS"} {ewc
```



Allows you to create the windows or dialog boxes in your project. You draw and view controls on a form.

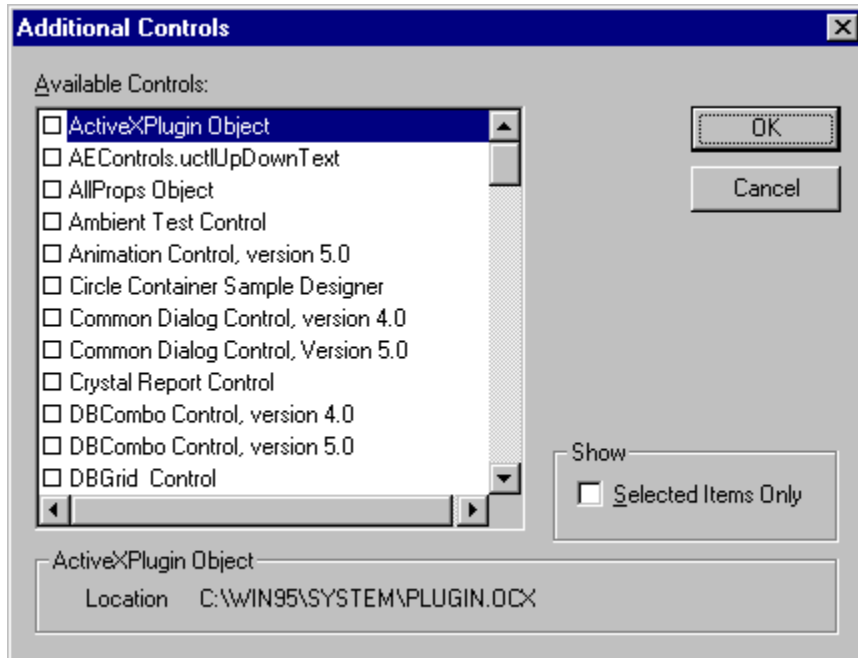
While you are designing a form:

- Each form window has a Maximize, Minimize, and Close button.
- You can view the form grid and determine the size of the gridlines from the General tab of the Options dialog box.
- Use the buttons in the Toolbox to draw controls on the form. You can set your controls to align with the grid of your form from the General tab of the Options dialog box.

Additional Controls Dialog Box

{ewc HLP95EN.DLL,DYNALINK,"See Also":"vbproBooksOnlineJumpTopic;vbrgnAddCustomControlsC"}
HLP95EN.DLL,DYNALINK,"Specifics":"vbrgnAddCustomControlsS"}

{ewc



Allows you add controls to your project's Toolbox.

Dialog Box Options

Available Controls Displays the available custom controls.

Note You can not remove a control that is used in your project.

Show Determines which items are listed in the Available Controls list. You can select any or all of the following options.

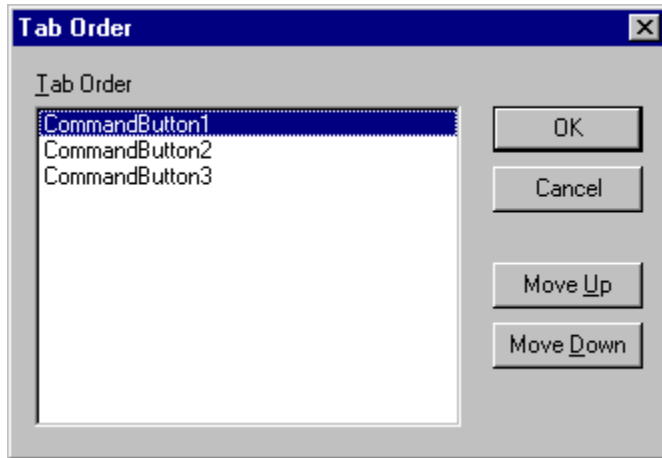
- **Selected Items Only** — Displays only those items in the Available Controls list which you have selected to include in the project.

Path Displays the path of the item selected in the Available Controls list.

Tab Order Dialog Box

{ewc HLP95EN.DLL,DYNALINK,"See Also":"vadlgTabOrderDialogC;vbproBooksOnlineJumpTopic"}
HLP95EN.DLL,DYNALINK,"Specifics":"vadlgTabOrderDialogS"}

{ewc



Lists the tab order for the objects and allows you to change the order.

Dialog Box Options

Tab Order Lists the objects, in their current order, on the form.

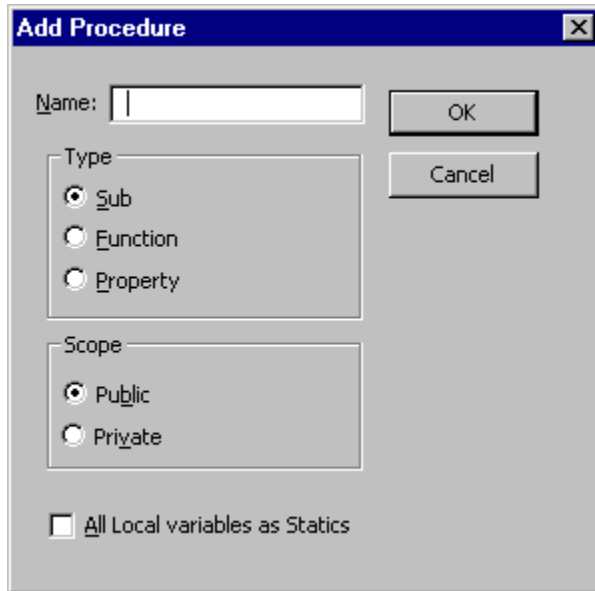
Move Up Moves the selected object up one position in the tab order each time you click it.

Move Down Moves the selected object down one position in the tab order each time you click it.

Add Procedure Dialog Box

{ewc HLP95EN.DLL,DYNALINK,"See Also":"vbproBooksOnlineJumpTopic;vbrgnInsertProcedureC"}
HLP95EN.DLL,DYNALINK,"Specifics":"vbrgnInsertProcedureS"}

{ewc



Inserts a new **Sub**, **Function**, or **Property** procedure. The Add Procedure dialog box also allows you to set the scope to public or private, and make all local variables in the procedure static.

Dialog Box Options

Name Lists a name for the new procedure.

Type Identifies the type of procedure to create.

- Sub — Creates a new **Sub** procedure.
- Function — Creates a new **Function** procedure.
- Property — Creates a new **Let** property and **Get** property procedure pair.

Scope Sets the procedure's scope to either **Public** or **Private**.

All Local Variables as Statics Adds the **Static** keyword to the procedure definition.

OK Inserts the procedure template in the Code window.

Cancel Closes the dialog box without inserting a new procedure.

Code Command (View Menu)

{ewc HLP95EN.DLL,DYNALINK,"See Also":"vbcmdCodeC;vbproBooksOnlineJumpTopic"}
HLP95EN.DLL,DYNALINK,"Specifics":"vbcmdCodeS"}

{ewc

Displays or activates the Code window for a currently selected object.

Toolbar shortcut: . Keyboard shortcut: F7.

Last Position Command (View Menu)

```
{ewc HLP95EN.DLL,DYNALINK,"See Also": "vbcmdLastPositionC;vbproBooksOnlineJumpTopic"} {ewc  
HLP95EN.DLL,DYNALINK,"Specifics": "vbcmdLastPositionS"}
```

Allows you to quickly navigate to a previous location in your code. Enabled only if you edited code or made a Definition command call and only when the Code window is displayed. Visual Basic only keeps track of the last 8 lines that were accessed or edited.

Keyboard shortcut: CTRL+SHIFT+F2.

Object Browser Command (View Menu)

{ewc HLP95EN.DLL,DYNALINK,"See Also":"vbcmdObjectBrowserC;vbproBooksOnlineJumpTopic"}
HLP95EN.DLL,DYNALINK,"Specifics":""}

{ewc

Displays the Object Browser, which lists the object libraries, the type libraries, classes, methods, properties, events, and constants you can use in code, as well as the modules and procedures you defined for your project.

Toolbar shortcut: . Keyboard shortcut: F2.

Properties Window Command (View Menu)

{ewc HLP95EN.DLL,DYNALINK,"See Also":"vbcmdPropertiesWindowC;vbproBooksOnlineJumpTopic"} {ewc HLP95EN.DLL,DYNALINK,"Specifics":"vbcmdPropertiesWindowS"}


Displays the Properties window, which lists the design-time properties for a selected form, control, class, project or module.

Toolbar shortcut: . Keyboard shortcut: F4.

Toolbox Command (View Menu)

{ewc HLP95EN.DLL,DYNALINK,"See Also":"vbcmdToolBoxC;vbproBooksOnlineJumpTopic"} {ewc
HLP95EN.DLL,DYNALINK,"Specifics":"vbcmdToolboxS"}

Displays or hides the Toolbox, which contains the controls currently available to your application.

Toolbar shortcut: .

Call Stack Command (View Menu)

{ewc HLP95EN.DLL,DYNALINK,"See Also":"vbcmdCallsC;vbproBooksOnlineJumpTopic"} {ewc
HLP95EN.DLL,DYNALINK,"Specifics":"vbcmdCallsS"}

Displays the Calls dialog box, which lists the procedure that have started but are not completed.
Available only in break mode.

When Visual Basic is executing the code in a procedure, that procedure is added to a list of active procedure calls. If that procedure then calls another procedure, there are two procedures on the list of active procedure calls. Each time a procedure calls another **Sub**, **Function**, or **Property** procedure, it is added to the list. Each procedure is removed from the list as execution is returned to the calling procedure. Procedures called from the Immediate window are also added to the calls list.

You can also display the Calls dialog box by clicking the Calls button (...) next to the Procedure box in the Locals window.

Toolbar shortcut:  Keyboard shortcut: CTRL+L.

Object Command (View Menu)

{ewc HLP95EN.DLL,DYNALINK,"See Also":"vbcmdObjectViewC;vbproBooksOnlineJumpTopic"}
HLP95EN.DLL,DYNALINK,"Specifics":"vbcmdObjectViewS"}

{ewc

Displays the active item.

Toolbar shortcut: . Keyboard shortcut: SHIFT+F7.

Immediate Window Command (View Menu)

{ewc HLP95EN.DLL,DYNALINK,"See Also":"vbcmdImmediateWindowC;vbproBooksOnlineJumpTopic"}
HLP95EN.DLL,DYNALINK,"Specifics":"vbcmdImmediateWindowS"}

{ewc

Displays the Immediate window and displays information resulting from debugging statements in your code or from commands typed directly into the window.

Use the Immediate window to:

- Test problematic or newly written code.
- Query or change the value of a variable while running an application. While execution is halted, assign the variable a new value as you would in code.
- Query or change a property value while running an application.
- Call procedures as you would in code.
- View debugging output while the program is running.

Toolbar shortcut: . Keyboard shortcut: CTRL+G.

Locals Window Command (View Menu)

{ewc HLP95EN.DLL,DYNALINK,"See Also":"vbcmdLocalsWindowC;vbproBooksOnlineJumpTopic"} {ewc
HLP95EN.DLL,DYNALINK,"Specifics":"vbcmdLocalsWindowS"}

Displays the Locals window and automatically displays all of the variables in the current stack and their values.

The Locals window is automatically updated every time you change from run time to break mode and every time the stack context changes.

Toolbar shortcut: .

Watch Window Command (View Menu)

{ewc HLP95EN.DLL,DYNALINK,"See Also":"vbcmdWatchWindowC;vbproBooksOnlineJumpTopic"} {ewc
HLP95EN.DLL,DYNALINK,"Specifics":"vbcmdWatchWindowS"}

Displays the Watch window and displays the current watch expressions. The Watch window appears automatically if watch expressions are defined in the project.

If the context of the expression isn't in scope when going to break mode, the current value isn't displayed.

Toolbar shortcut: .

Definition Command (View Menu)

{ewc HLP95EN.DLL,DYNALINK,"See Also":"vbcmdProcedureDefinitionC;vbproBooksOnlineJumpTopic"} {ewc HLP95EN.DLL,DYNALINK,"Specifics":"vbcmdProcedureDefinitionS"}

Displays the location in the Code window where the variable or procedure under the pointer is defined. If the definition is in a referenced library, it is displayed in the Object Browser.

Keyboard shortcut: SHIFT+F2.

Toolbars Command (View Menu)

{ewc HLP95EN.DLL,DYNALINK,"See Also":"vbcmdCommandBarsC;vbproBooksOnlineJumpTopic"} {ewc HLP95EN.DLL,DYNALINK,"Specifics":"vbcmdCommandBarsS"}

Lists the toolbars that are built into Visual Basic and the Customize command. You can:

- Toggle the toolbars on and off
- Drag the toolbars to different locations on your desktop.

Debug Displays the Debug toolbar which contains buttons for common debugging tasks.

Edit Displays the Edit toolbar which contains buttons for common editing tasks.

Standard Displays the Standard toolbar which is the default toolbar.

UserForm Displays the UserForm toolbar which contains buttons specific to the form.

Customize Displays the Customize dialog box where you can customize or create toolbars and your menu bar.

Project Explorer Command (View Menu)

```
{ewc HLP95EN.DLL,DYNALINK,"See Also":"vbcmdProjectC;vbproBooksOnlineJumpTopic"} {ewc  
HLP95EN.DLL,DYNALINK,"Specifics":""}
```

Displays the Project Explorer, which displays a hierarchical list of the currently open projects and their contents.

The Project Explorer is a navigational and management tool only. You cannot build an application from the Project Explorer.

Toolbar shortcut: . Keyboard shortcut: CTRL+R.

Caption Property

Enabled Property

Height Property

HelpContextID Property

Hide Method

Left Property

Move Method

Name Property

PrintForm Method

Show Method

StartUpPosition Method

Tag Property

Top Property

Visible Property

WhatsThisButton Property

WhatsThisHelp Property

WhatsThisMode Method

Width Property

Ambiguous selection

Either you have not selected a keyword or you have requested Help on a component of the integrated development environment (IDE). If you were trying to select a keyword, try reselecting a single keyword. If you were trying to get information on the IDE, click one of the following:

[Code or Module Window](#)

[Immediate Window or Pane](#)

[Locals Windows or pane](#)

[Object Browser](#)

[Watch Window or Pane](#)

Window Menu Commands

{ewc HLP95EN.DLL,DYNALINK,"See Also":"vbcmdWindowsC;vbproBooksOnlineJumpTopic"} {ewc HLP95EN.DLL,DYNALINK,"Specifics":"vbcmdWindowsS"}

Split

Toggles splitting the Code window in half horizontally. Only available when the Code window is active.

Toolbar shortcut: 

Tile Horizontally

Tiles all open document windows in your project horizontally.

Toolbar shortcut: 

Tile Vertically

Tiles all open document windows in your project vertically.

Toolbar shortcut: 

Cascade

Rearranges all open document windows in your project so they overlap in a cascade.

Toolbar shortcut: 

Arrange Icons

Arranges the icons of any document windows you have minimized, neatly at the bottom left of the window.

Window List

Lists all open document windows

