

ZipLabel v3.0

Released 4/15/98
Copyright (c) 1997-1998
Earle F. Philhower, III
earle@geocities.com

ZipLabel is a shareware utility for the creation of labels to be placed in Zip disk cases. It can generate many different kinds of labels, containing directory information, images, fonts, and more. Organize all your stuff with it!

Check out [cdrLabel](#) if you have a CDROM drive and like the kind of labels ZipLabel creates:

<http://www.geocities.com/CapeCanaveral/6552/cdrlabel.html>

Your First ZipLabel

[Getting Started](#)

Starting Out With ZipLabel

[Installation](#)

[Working with Labels](#)

[Using the Printed Labels](#)

[License](#)

[Shareware Registration](#)

Answers To Common Questions

[What's New?](#)

[How Do I...?](#)

[Bug Reports?](#)

[Future Directions?](#)

Advanced ZipLabel Use

[Menu Items](#)

[Choosing Subdirectories](#)

[Adding Images](#)

[Adding Strings](#)

[Editing Files and Folders](#)

[Customizing Fonts and Colors](#)

[Comment Editor](#)

[Printer Setup](#)

[Templates](#)

[Special Thanks](#)

ZipLabel Awards



- ZDNet HotFiles Editor's Pick - <http://www.hotfiles.com>

Getting Started

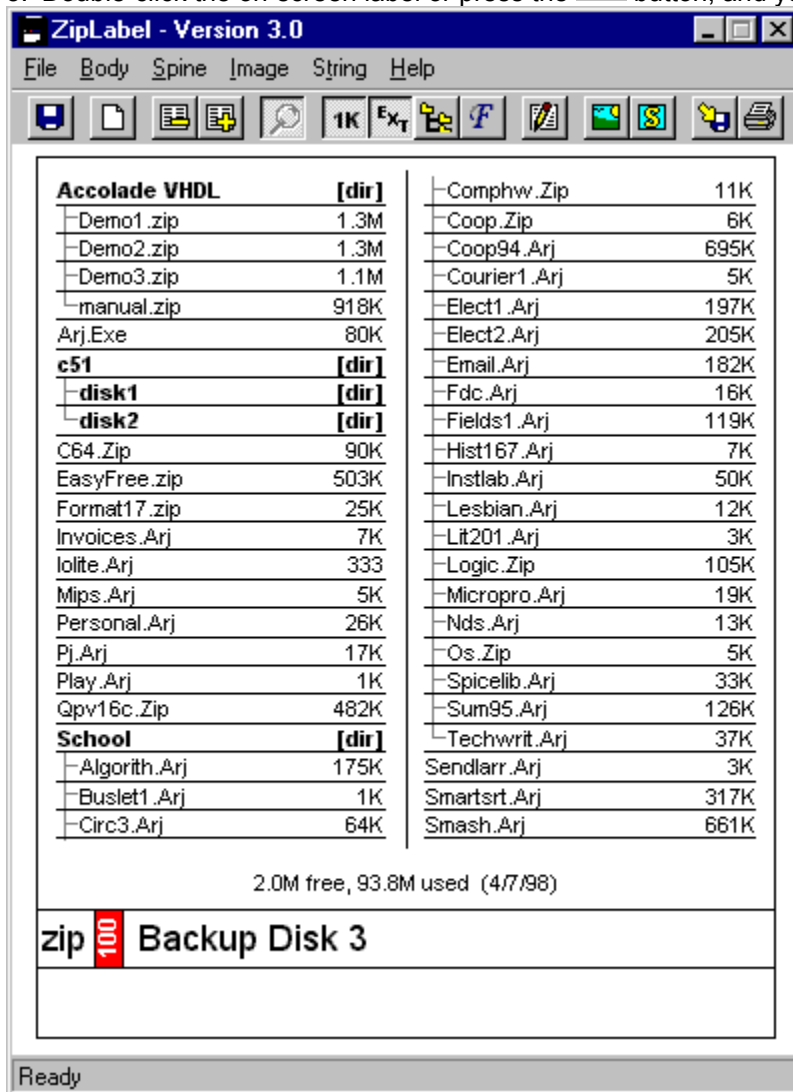
It's as easy as 1...2...3 to make your first label using ZipLabel!

1. If you haven't already selected your Zip drive using the File->Select Zip Drive menu, do that now.




2. Insert the disk you want to catalog.

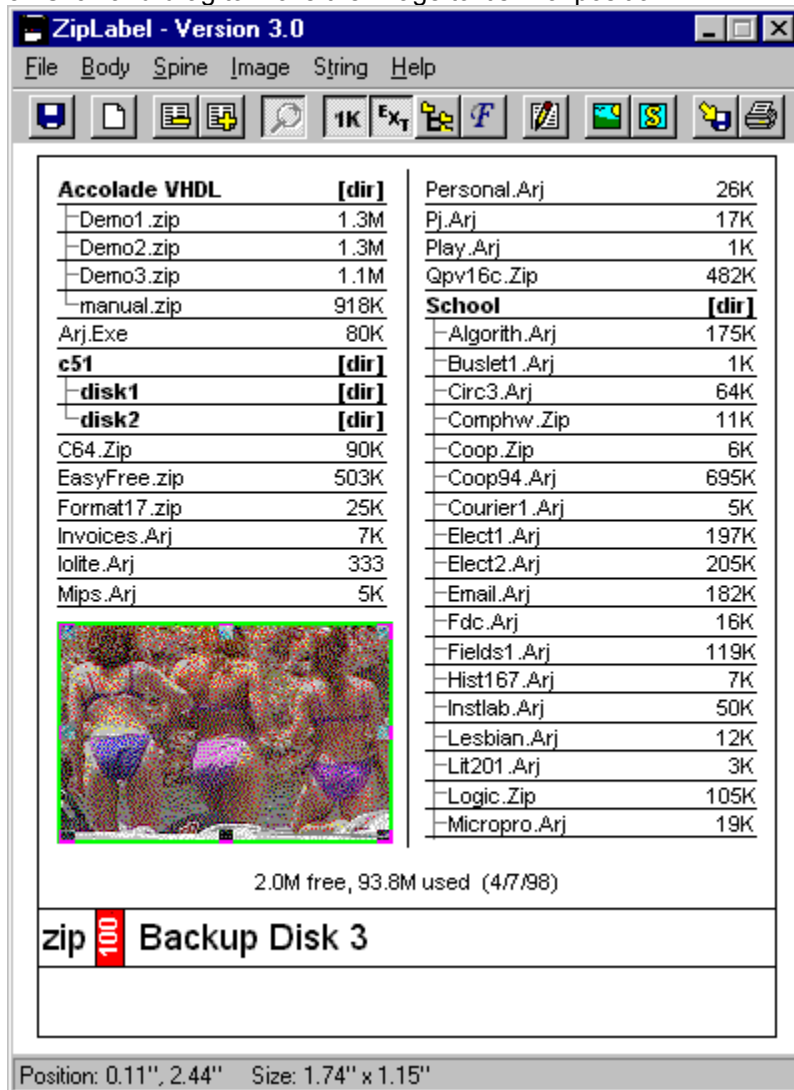
3. Double-click the on-screen label or press the  button, and you've got a basic label, like this one:




Wasn't that easy? Now that you've scanned your Zip disk into the label, you can have fun adding pictures and text, changing the fonts and colors, or just printing and admiring it!

Let's add an image to your label, it's also as easy as 1...2...3!

1. Click the  toolbar button.
2. Select the image (either BMP or JPEG format) from the file dialog.
3. Click-and-drag to move the image to it's final position:



Once your label is perfect, print it by using the  toolbar button. Cut it out, put it in your Zip disk case, and show off to your friends. This is just a tiny sample of ZipLabel's capabilities. Explore on your own or use this help file to get more information about additional cool features.

What's New

ZipLabel was initially released January 1997. Since then it has undergone an incredible amount of work to become to the program you see today.

Changes in this release of ZipLabel (April 15, 1998)...

Version 3.0:

- Multi-line strings, with more formatting options
- Graphical directory browser and file editor
- Store printer and page setup between runs
- Automated, customizable comment line
- Space between labels for people with shaky hands
- Icons for all saved files with double-click opening
- Registered users get to customize their initials on-the-fly
- Ergonomic changes to interface, tweaks to menu tree
- This help file!

Changes in previous version (January 9, 1998)...

Version 2.0:

- Quad-Length Labels! 4x the fun!
- Crop marks to make it easier to cut
- Customizable borders
- Printer setup dialog, can choose non-default printer and get WYSIWYG
- Can place label anywhere on printouts
- Very small font sizes supported
- Up to 5 columns now available
- Spine can be custom aligned

License

ZipLabel is **shareware**, (c) 1997-8 by Earle F. Philhower, III. All rights reserved. I make no warranties as to it's correctness or functionality. Use it at your own risk.

Neither ZipLabel nor myself are affiliated with lomega Corp. All names are copyright of their respective owners. lomega and Zip Drive are copyright of lomega Corp.

You may use ZipLabel free of charge only for a 30 day evaluation period. After that, you must either register your copy by paying a small license fee, or stop using it.

I encourage and grant license for anyone to copy and distribute unregistered version of this program, provided that:

- Copies contain all files of original distribution in unmodified state.
- No fee is charged other than a nominal duplication and handling fee.
- Software is clearly identified as shareware.

Shareware Registration

ZipLabel is shareware, the standard software try-before-you-buy. If ZipLabel is of use to you after the initial evaluation period, a \$15.00 registration fee is requested. If ZipLabel isn't useful to you, or you find some important features lacking, feel free to email me at earle@geocities.com. I listen to all comments.

What Will You Get For Registration?

- A registration code that can be entered into the Registration dialog. This code will remove the random nag screen on printouts, as well as allow you to customize the initials.
- Registration will be good for all future releases of ZipLabel.
- Addition to the mailing list for new releases and betas. Your contact information will not be distributed to any other parties. I hate spam worse than you do, believe me!
- A warm, fuzzy feeling for supporting the shareware concept.

How Do You Register?

Registrations are now being processed through the Kagi (<http://www.kagi.com>) online service, which allows both check and credit card payment. It should also decrease the turnaround time for registration codes to a matter of days or hours.

Before May 1, 1998, the easiest way to register is to select the "Order Form..." item in the Help menu, and follow the program's prompts to email your payment information. If, for some reason ZipLabel cannot find the executable "REGZL.EXE", you will have to execute it from the Explorer or File Manager yourself.

After May 1, 1998, an "Online Registration..." option will appear in the Help menu. If you'd rather register via your Web browser, you may use this option to connect to the Kagi server automatically. Please note that this obviously requires an internet connection. If you're unwired you can always use the "Order Form..." option and snail mail your registration.

You can bring the online registration form up in your web browser by using the following URL:

<http://order.kagi.com/?4VG>

Installation

There are two ways to install ZipLabel:

1. Use the included Setup program, which will make program groups and allow you to use the Uninstall program, or
2. Just copy the executable file to any convenient directory.

If there are any problems with the setup program, just perform option (2) and send me some email (earle@geocities.com).

WINDOWS 3.1 ONLY: Under Windows 3.1 you **NEED** to have Win32s v1.30c installed, if you don't already have it check out the following URL to get it:

<http://support.microsoft.com/support/kb/articles/Q122/2/35.asp>

Templates

A template is a small text file created by ZipLabel that contains all formatting information for a label. It allows you to add and delete files from a disk while preserving the label's appearance between runs of ZipLabel. If you're going to be updating the contents of a disk frequently they can save you lots of time.

Templates store the following information:

- General format, including font and colors
- Images and Strings
- Directories displayed/hidden

This is enough information for ZipLabel to create a new label when files are added or removed. Best of all, these files won't take up much disk space (normally under 5Kb)!

Using Templates


It's easy and fast to start using templates for your disks:

1. First, select the `File->Use Templates`. This will make ZipLabel search for a hidden file, "ZIPLABEL.ZLT", on each disk it scans and read it's formatting.
2. Now, insert your disk and read it in. Set the font, directory tree, and the images you want and select `Body->Write Template`. Go on to the next disk you want to set up and perform the same operation.
3. The next time ZipLabel reads in the disk with your saved template, it will automatically format it the way you specified.

I use templates on all my disks, and it's saved me countless hours of tweaking!

Adding Images

ZipLabel can import .BMP (Windows Bitmap) and .JPG (JPEG) files into your labels. Simply select `Body-`

>Insert Image or the  toolbar button and you're on your way. Labels can either be underneath the label text, or above the text. Text will automatically flow around any images above it.

To select an image in your label, left-click on it. Click-and-drag to move the label around. Right-click to bring up a menu of options to delete, center, or change the image's position relative to the text. Above Label makes the text flow around the image, while On Label and Below Label place an image without text wrapping.

Use the little size-blocks to change an image's size, or use the Image popup-menu's scaling options.

HINT: If you are having trouble dragging a tiny image, hold down the SHIFT key while you click the left button. This turns off the size-blocks and always drags an image.


HINT: To setup a photo as your label's background, perform the following steps. (Remember, with a dark image it's easiest to see white text, and with a light image it's easiest to see dark text):

1. Image->Insert Image
2. Image->Scale->Size To Body
3. Image->Below Label

Bitmaps of greater than 72dpi are supported automatically, so you can scan an image in at a higher resolution than the screen supports, yet still print out at the higher resolution. This is especially useful for line art, where 72dpi conversion can cause excessive jaggies.

Working With Labels

ZipLabel supports several different label formats: single-, double-, and quad-length. Your choice of label format will depend upon how many files your disk contains. Select a label format by using the `File->Number Of Labels` menu.

You may zoom in or out of the current label by using the  toolbar button. To change the label you're working on, you may click it while zoomed-out, or enter it's number.

Note: All items in the "Body" and "Spine" menus only work on the currently selected label. Each label may be completely customized different from its siblings.

Double-Length Labels

Two double-length label modes are available in ZipLabel, with the spine either in the middle or on the bottom of the labels. Choose `File->Number of Labels->Two, Fold Out` for double length labels that have the spine on the bottom, and whose second label has to be "folded out" to read. Choose `File->Number of Labels->Two, Fold Around` for labels that have a spine in the center, and are actually folded-around the Zip disk in the case.

While editing in zoomed-out mode, you can see both sides of the label, but when you are zoomed in you can only see either the first or second page. To toggle between pages, click on the "Up To Page Two" or "Down To Page One" areas at the bottom of the label. You can also use the up and down arrow keys to perform the same function.

Note: The "Up/Down to Page Two/One" will not be printed out on your labels.

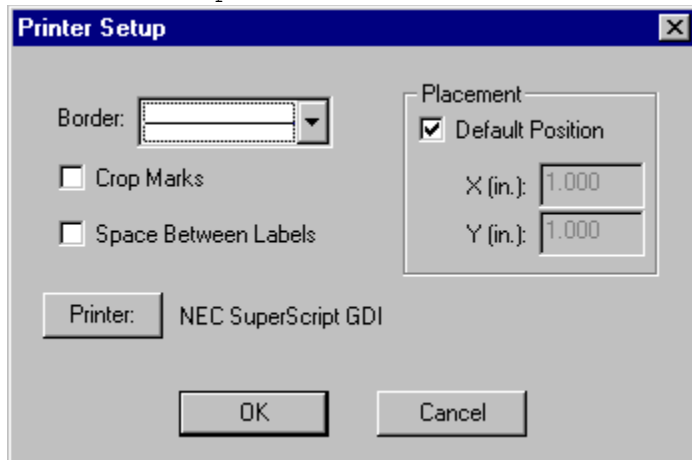
Quad-Length Labels

ZipLabel also supports a quad-label mode, allowing you to catalog twice as many files as double-length mode. Use this for your really full Zip disks! Simply choose `File->Number of Labels->One, Quad Length` and you're on your way.

When you print out your labels, please don't cut apart the individual labels. Instead, cut around the labels, then fold the cutout in half along its horizontal center. This gives a tall, skinny label. Fold this skinny label down, and insert into a jewel case. No staples or glue necessary!

Printer Setup

Set your printer and output options with the printer setup dialog. Bring it up via the File->Printer Setup menu:



- **Select a Default Printer:** ZipLabel interrogates the currently selected printer to determine the size of fonts, graphics capabilities, and more. To print to a non-default printer use this button to select it from the list.
- **Toggle Crop Marks:** Crop marks are 1 inch lines along the edge of the sheet indicating where cuts need to be made. These are especially handy for use with paper cutters. These marks only appear on the printed output.
- **Space Multiple Labels On The Page:** If you have trouble cutting out labels with a shared edge, use this option to give you a small gap between multiple labels per page.
- **Select a Border Style:** Use this popup to determine how ZipLabel should outline your labels. If you are using a paper cutter, you can turn off the border and turn on crop marks for a neat, borderless label.
- **Position:** Specify the upper-left-hand corner of printouts yourself using these boxes, making it easy to use different paper sizes and perforated templates. When the Default checkbox is checked, the labels will be placed in the approximate center of the page.

Menu Items

Here are the menus that are available through the menu bar. You can also right-click on any screen item to bring up it's popup menu.

File

Select Zip Drive

Chooses the drive letter associated with your Zip drive. Does not actually read in a disk!

Window Scaling

If ZipLabel's window appears too small or large, you can adjust it's scaling from this menu. This scaling does not affect printed output, only the on-screen display.

Number of Labels

Choose how many labels, and how you'd like them formatted, from this menu.

Directory Levels

ZipLabel only scans down the number of directories you specify here.

Scan Directories Only

When checked, ZipLabel will only read in the names of directories and not files. Use this mode when you have lots of directories that you want to see, but don't care about the files in those directories.

Use Template Files

When checked, ZipLabel automatically formats your label according to the template file stored on the Zip disk. If the disk doesn't have a template file, no action is taken. See [Templates](#) for more information.

Load...

Read a saved label from disk.

Save

Save the currently edited label to disk under the last file name entered.

Save As...

Prompt for a new name to save the current label to disk.

Read Template File

Read in the [formatting information](#) stored in a Zip disk's template file. See [Templates](#) for more information.

Write Template File

Save only the [formatting information](#) from the current label to disk as a template. See [Templates](#) for more information.

Clear All Labels

Clear all text and images from all labels present, but preserve font and color selections.

Reset To Defaults

Set all font, color, and formatting options to sane defaults.

Printer Setup

Specify printout options. See [Printer Setup](#) for more details.

Print

Print all displayed labels.

Exit

Quits ZipLabel.

Body

Display File Sizes

Show or hide the file sizes for the current label.

Display Extensions

Show or hide extensions from the files present in the current label.

Display Comment

Show or hide disk comment, the single line of text at the bottom of the label summarizing free space, scan date, etc.

Columns

Selects the number of columns of files to display.

No Columns

Do not display files on the current label.

Lined

Check to draw a thin line under each file name.

Sorting

Sort the files in the current label by name, extension, or size, and either ascending or descending order.

Set Fonts And Color

Select the font and color for files, folders, and other label elements. See [Fonts and Colors](#) for more information.

Background Color

Select the background color for the label body. Note that this color will be printed by your printer, and may consume a lot of ink.

Read Zip

Scan a disk into the currently selected label. If "Use Templates" is selected in the File menu, also reads template and applies formatting and images.

Edit Files and Folders

Modify the contents of the label by adding, removing, or moving files. See [Files And Folders](#) for more information.

Edit Label Comment

Modify the comment displayed at the bottom of the label. See [Comment Editor](#) for details.

Choose Subdirectories

Select the directories to display or hide. See [Subdirectory Selector](#) for more information.

Clear Label

Removes images, text, and files from the current label.

Duplicate Style

Copy the formatting of the current label to all other labels.

Zoom

Zoom in or out of the current label.

Spine**Edit Spine Text**

Modify the text printed on the label spine.

Spine Font

Choose the font of the spine text.

Spine Color

Choose the foreground color of the spine text.

Alignment

Select the justification used for the spine text.

Background Color

Choose the background color for the spine.

Display "ZIP 100"

Insert the zip 100 logo box on the spine.

Color ZIP Logo

When the zip 100 logo box is displayed, color the 100 box in red.

Customize Initials

Registered users may modify the zip portion of the zip 100 logo box to their initials.

Image**Insert Image**

Place a JPEG(.JPG) or Windows Bitmap(.BMP) on the label.

Copy

Duplicate the currently selected image.

Delete

Remove the currently selected image.

Above Label

Have file listing flow around image border. No file names are overwritten by the image in this mode.

On Label

Simply draw the image on the label, do not flow the file names around it. File names may be obscured by the image.

Below Label

Draw the image under the label, with file names appearing on top of the image. Especially useful for background bitmaps.

Center Horizontally

Center the image left-to-right in the label.

Center Vertically

Center the image top-to-bottom in the label.

Scale**25%-200%**

Stretch the image to a percentage of it's original size.

Size To Body

Stretch the image to fill the body of the label, leaving the spine empty.

Size To Label

Stretch the image to fill the entire label, spine and all.

Maximum Aspect

Make the image as large as possible while preserving it's aspect ratio.

String**Insert String**

Place a text string on the label. See [String Editor](#) for more details.

Copy

Duplicate the currently selected image.

Delete

Remove the currently selected image.

Modify Text

Modify the selected string's text, font and color using the [String Editor](#).

Font...

Choose a new font for the current string.

Foreground Color

Choose a new foreground color for the current string.

Background Color

Choose a new background color for the selected string.

Transparent

When selected, do not draw a background color for the string. Useful when overlaying text on images.

Automatically Size

Adjust the bounding box of the currently selected string automatically.

Orientation

Rotate the string 0, 90, 180, or 270 degrees.

Alignment

Select the alignment of the string within it's bounding box.

Above Label

Have file listing flow around image border. No file names are overwritten by the image in this mode.

On Label

Simply draw the image on the label, do not flow the file names around it. File names may be obscured by the image.

Below Label

Draw the image under the label, with file names appearing on top of the image. Especially useful for background bitmaps.

Center Horizontally

Center the image left-to-right in the label.

Center Vertically

Center the image top-to-bottom in the label.

Help**About ZipLabel**

Give information about program and author.

ZipLabel Help Contents

Displays the help file, for when you're really stuck!

Check for New Version

Starts your web browser and loads the update information web page.

Order Form

Runs registration program to allow you to register via email, WWW, or postal mail.

Enter Registration Codes

Enter the codes returned with your registration. Once completed allow customization of the spine initials.

Using the Printed Labels

Cut out the labels, it should be pretty obvious where to cut and where to fold. Remove the boring blue cardboard Zip case insert and place your shiny new ZipLabel label into your case. Replace the original blue label (it's normally of much heavier stock than your printer paper, and makes the label stay put better). Admire just how cool it looks, and then go make some more!

If you have access to a paper cutter you can add Crop Marks to the printed output to make it easier for you to cut.

Try using some colored, heavy-bond copier paper. Packs of 5 colors can be bought at any office supply store, and make it very easy to classify your disks (i.e. **RED** for backups, **GREEN** for games, etc.)!

Special Thanks

I'd like to thank Michel Lefort for the program icon and Jim Resinger who actually sent me a Zip Disk!

The JPEG decoding routines are taken from JPEG-6a sources, and they'd like me to say: "this software is based in part on the work of the Independent JPEG Group." These guys make no warranty as to their JPEG decoder, and neither do I!

Greg Kochaniak is the author of the registration utility Kagi uses, and he's kind enough to give it away to all of us authors.

Thanks to all the registered users for their feedback and support. Keep the suggestions and bug reports coming in!

Bug Reports

If ZipLabel crashes on you, or doesn't print out correctly on your printer I'd like to hear about it. Please make sure to include the following information to speed things up:

- Operating System
- Printer Type, Language(PCL, GDI, PS), Connection(network, local, etc)
- Series of operations to cause failure (if it's repeatable)

Just saying "ZipLabel crashed on me!" is about as useful as saying "My car's broken" to a mechanic over the phone.

Future Directions

- Free rotation of images and text?
- In-place editing of strings, selecting of directories?
- Importing file icons?
- User suggestions, of course

How Do I...

How do I make a label as fast as possible, with the least fuss?

Use this program! Just double-click on the label and the program will scan your disk.

The program isn't displaying anything after a period (.). How do I change this?

You've got the Show Extensions menu option unchecked, and the program is hiding them. Check the `Body->Show Extensions` item.

How do I make the program scan my entire disk and not just the root directory?

Use the `File->Directory Levels` option and select how many levels you want to scan. Be aware that scanning disks with many levels can take a long time.

How do I add a background picture of my baby/dog/girlfriend to my label?

Use the Add Image button in the toolbar, select a .BMP or .JPG of your tiny/furry/cute friend. You'll see the picture appear in the center of the label. Now, right-click on the image and select `Scale->Size To Body` or `Scale->Size To Label` option. The image will now fill your label. Finally, put it under the text by right-clicking on the image once again, and using the `Below Label` option.

I have a LOT of files. How can I catalog them all?

You've got several options:

- Use a double-length or quad-length label
- Increase the number of columns, possibly turning off extensions or file sizes
- Change the font for directories and folders to something smaller
- Hide directories you don't need to see

The program keeps reading my hard drive! How can I make it scan my drive instead?

Use the `File->Select Drive` option.

How do I move a tiny image or string?

Hold down the **SHIFT** key when you're working with a block that's very small to tell the program you want to move the image or string, not resize it.

How do I make rotated text print properly on my Brother Laser printer?

Your printer's driver doesn't handle rotated text properly. Tell it to let Windows to handle rotated fonts by checking the `Download TrueType Fonts as Graphics` from the printer's control panel.

How do I make certain types of files stand out?

Use the Fonts and Colors window to add pizzazz to special file types by changing their fonts or colors. For example, you could make all your source files (.C, .H) green and all your executables (.EXE, .DLL) blue.


How do I move the label's position on the printed page?

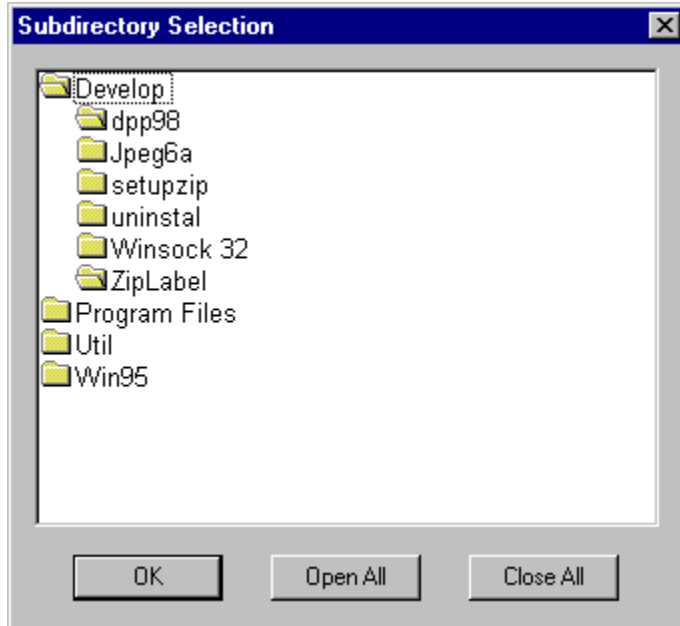
Use the `File->Print Setup` menu, and uncheck the `Default Position` box and enter X and Y offsets for the upper-left-hand corner of the label.

How do I thank you for this neat program?

Email me with suggestions for additions or improvements, and register.

Subdirectory Selector

ZipLabel allows you to choose which directories it shows and which it hides with the Subdirectory Selector. Bring it up by using the `Body->Choose Subdirectories` menu option or the  toolbar button.




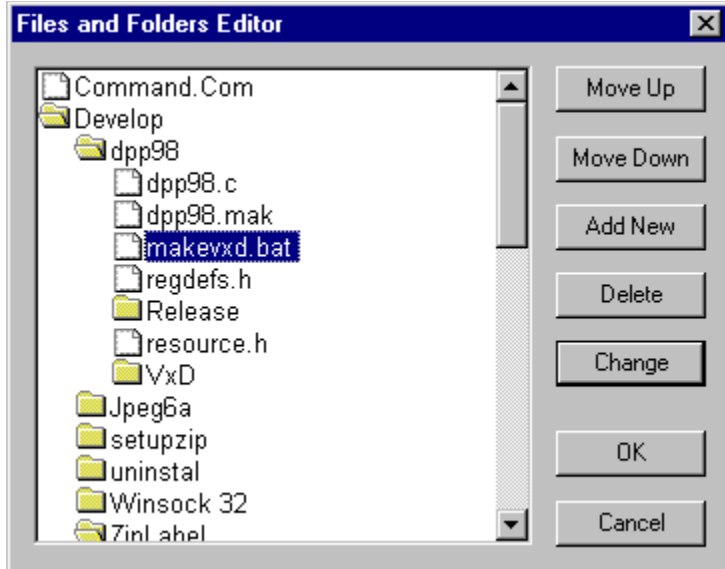
- Double-click on a directory to open or close it.
- Closed directories contents are not shown.
- Use the Open All button to open up every folder
- Use the Close All to close every folder.

Note: If you want to actually delete folders, and files, use the [Files and Folders Editor](#).

Files and Folders Editor

ZipLabel contains a graphical file and folder editor window. Bring it up by using the Body-

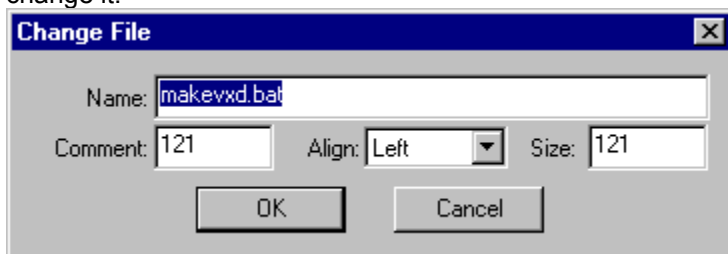
>Edit Files and Folders menu or the  toolbar button.



The window is divided into two sections, a graphical tree representation of every file and folder displayed on your label; and a column of action buttons.

- Double-clicking on a directory will open or close it.
- Select a file with the mouse and use the Move Up and Move Down buttons to change its position in the list. Note, however, that you can only rearrange a file in its own directory.
- Remove files you don't want to see on your label by the Delete button. This will only change your label, and will **NOT** delete the file from your disk.
- Click where you'd like to insert a file and select the Add button to insert a new file.

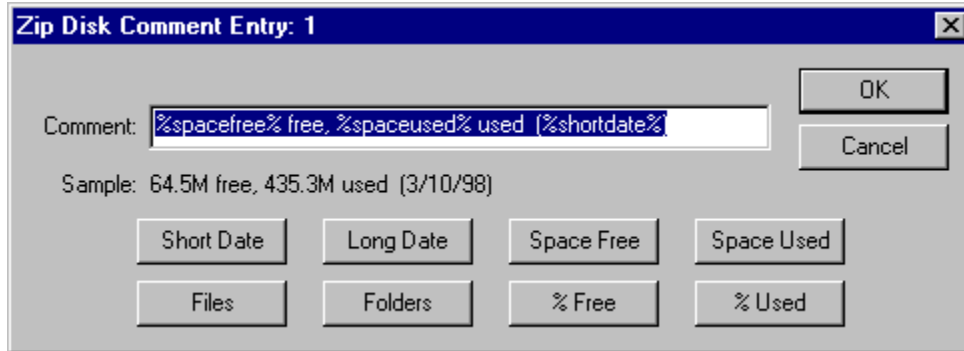
Double-clicking on a file, or selecting the Change button will bring up an editor window allowing you to change it.



- The name and size sections of this new dialog are self explanatory.
- The comment section is the 8-character string that normally contains a text representation of a file's size. (i.e. a file of 12,612 bytes has a comment of 12K).
- Use the Align combo-box to change an item's alignment in the column of files.

Comment Editor

Each label contains a single-line comment that may be hidden or shown. This comment normally contains information about the disk free space and scan date, but is completely customizable. Double click the comment text, use the `Body->Edit Label Comment` menu to bring up the editor.



There are three sections to this dialog, the editor where you can type a new comment, a line below that which shows how the entered comment will appear, and a series of macro buttons.

To set the label to a default comment, click the Default button. This will give a handy summary of disk space free and used, as well as last scan date for your disks.

These macro buttons are very powerful, and may be used to automatically customize each label with your own comment line.

Comment Macros

The buttons on the bottom of the dialog insert macros, strings that will be replaced with calculated values automatically by the program. Examine the comment in the shown dialog:

`%spacefree% free, %spaceused% used (%shortdate%)`

And the sample line:


64.5M free, 435.3M used (3/10/98)

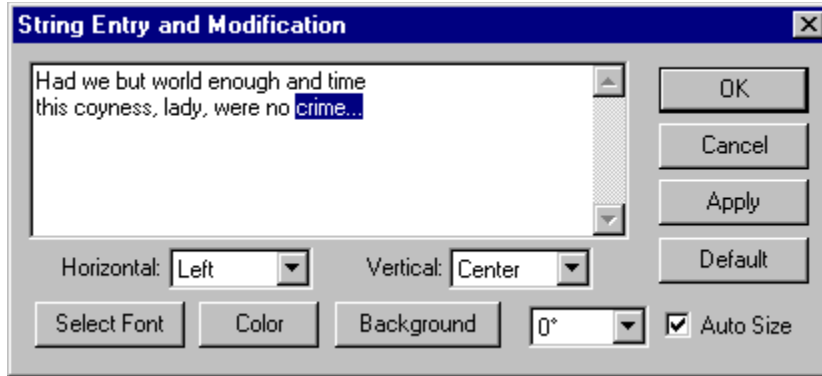
Note how the `%spacefree%` was replaced with the space free on the disk. Here's what the macro buttons do:

Name	Description	Sample
Short Date	Shorthand date	(1/23/98)
Long Date	Longhand date	Monday, January 23, 1998
Space Free	Space available on disk	10.3M
Space Used	Space used by files on disk	87.9M
Files	Number of files scanned from disk	185
Folders	Number of directories scanned	32
% Free	Percentage of disk empty	20.4%
% Used	Percentage of disk used by files	82.0%

Adding Strings

ZipLabel allows the insertion of multiple-line strings anywhere on the label. Up to 1,000 characters per string are allowed, and every feature of the string can be customized. Bring up the string editor by

double-clicking on a string, or create a new string via the `String->Insert String` menu or  toolbar button.



Note: Whenever you make a change to a string you can immediately see how it looks on your label by clicking the Apply button. You can also click the Apply button in any font or color pickers that appear from this window.

The largest part of this window consists of an area for entering the text of your string. Type or paste up to 1,000 characters into this box.

Customize your string's appearance by using the other controls in this window.


- The two popup boxes, Horizontal and Vertical, control the alignment of your string within its bounding box.
- Change the string's font, color, and background with the buttons along the bottom.
- Rotate the string in 90 degree increments with the orientation popup menu.

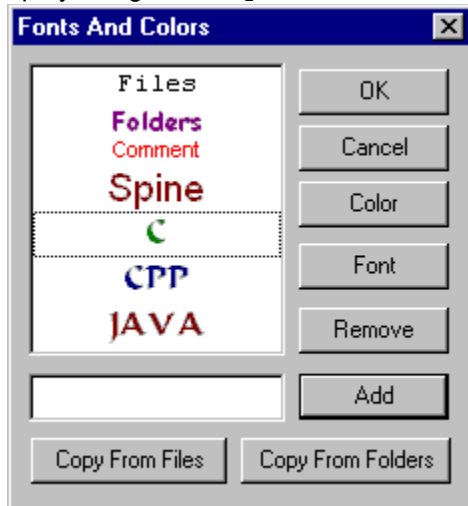
To have the program automatically size the string to fit all text without cutting any off, check the Auto Size checkbox. Unchecking this box will allow you to stretch the string's bounding box manually.

The Default button copies the current spine font and color to the string.

Fonts and Colors

The program supports customizing file display on a per-extension basis, through the use of the Fonts and Colors window. Use this window to change the fonts of files you want to stand out. For example, a programmer could make all .C files green, all .CPP files blue, and all .JAVA files red. Bring this window

up by using the Body->Set Fonts and Colors menu or the  toolbar button.



The first four items in this list are fixed as Files, Folders, Comment, and Spine.

- Customize the fonts and colors used for all files and folders with the first two items, the comment line with the third, and the spine with the fourth.

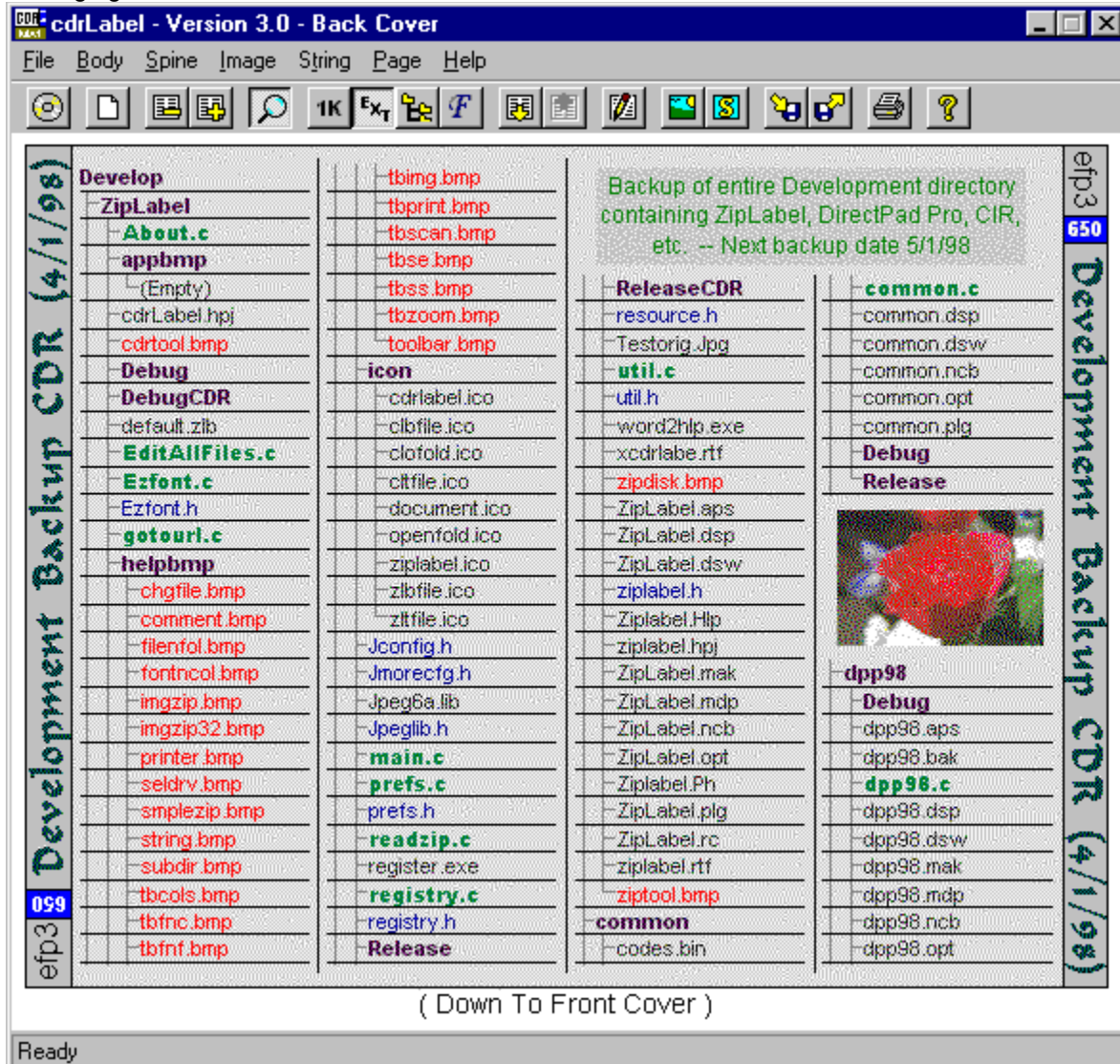
Add additional file extensions by typing their extension in the edit box and clicking the Add button.

- The extension will be added to the list, with its font and color the same as normal files.
- Use the color picker window to select a new color.
- Or, select the newly added extension and click the Font button to change its font.

The Copy from Files or Copy from Folders duplicates the standard file or folder color and font into the currently selected extension.

cdrLabel

cdrLabel is a utility for creating labels for all your CD-ROMs and CD-Recordables. It has the same easy interface as ZipLabel, but adds special features just for CDs, like multi-page booklet labels and music CD cataloging.



You can download your copy of cdrLabel from the following web page, or from any large shareware archive.

<http://www.geocities.com/CapeCanaveral/6552/cdrlabel.html>

