

Ambient Software's



**The Gods Speak
Version 1.0**

Overview

The Main Screen

This product is distributed exclusively in Europe by

Springsoft
SpringField House,
Llanfynydd,
Wrexham,
Clwyd
United Kingdom.

Tel : 0352 770049

Fax : 0352 770816

(c) 1994 Ambient Software - Makers of Visual Accounts, Britain's Best Accounting System.

Available Runes

There are 25 Runes in the bag. When you shuffle the runes, the bag refreshes itself with a complete new set. Let your mouse be drawn to the rune you feel you want, and click on it. This moves the rune over to the left, and displays it face up in detail.

Current Rune Name

This is the name of the last rune you chose, or clicked on. If the rune is reversed (upside down), the word 'Reversed' is visible. The meaning of many runes depends on which way up the rune is when you draw it from the bag.

The Gods Interpret your Runes

There are three on-line interpretations available, represented by the 3 icons at the bottom left of the main screen.

(1) Odin.

This old geezer is actually the most important God, and his interpretations tend to be no nonsense brief archaic comments. Odin doesn't have a lot of time for mortals...

(2) Freya.

This Goddess gives the most balanced answers, although she can be quite verbose and non-committal.

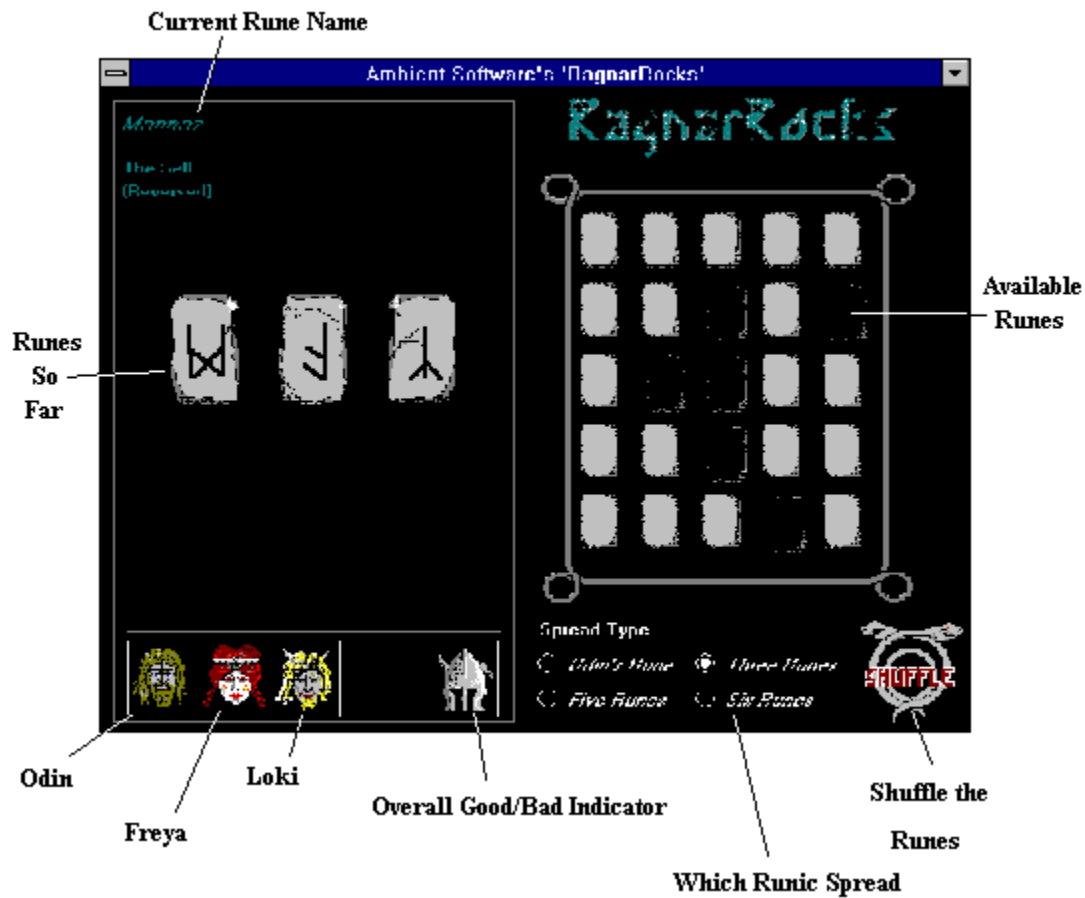
(3) Loki.

The God of mischief. Be warned, he likes to lead mortals astray, although his insight is more 'real' and contemporary than the other two Gods.

The Viking Hat

This fun feature gives you some quick indication as to the general positive/negative value of the runes you have cast. You should not rely on this indicator, however, you should read the interpretation from your favourite God.

The Main Screen



What's on this Screen?

Current Rune Name

Available Runes

Shuffle The Runes

Which Runic Spread

Overall Good / Bad Indicator

Odin / Freya / Loki

Runes So far : - depending on the type of spread you have chosen, this area of the screen allows you to place up to 6 runes on the board.

Overview

The Runes are an ancient Scandinavian invention, whose roots are lost in the mists of antiquity. Not fortune telling as such, the Runes are a kind of 'Oracle'. The belief system on which the Runes are based maintains that the future is not set; anything is possible, and therefore predicting the future per se is impossible. However, the Gods can be invited to point your attention to those events or situations which are most likely, given an existing set of circumstances.

Remember that an Oracle can never absolve you of responsibility for your actions, only steer you towards those factors which are most important in determining your own possible futures.

The Runes can never make a direct Yes/No comment on the future, only highlight the most likely possibilities. Beware of demanding absolutes from the Gods, for they do not take kindly to the presumptions of mortals. You will have more luck asking for a general interpretation of events as they stand, or are about to unfold. 'Is such and such a good idea?' will usually draw a response. 'Should I follow this course of action?' is also a good way to phrase a question. Also beware of asking the same question many times; the Gods will treat you with the contempt you deserve. If you find a particular interpretation does not appear clear, you can ask again, but be sure to phrase your question in a slightly different manner.

As for 'doing' the Runes, nothing could be simpler. Shuffle the stones while holding your question in your head, and then click on the backs of the runes you choose. The runes you choose will be shown in close up on the left; and once you have a full spread (be it the single rune or the 6 rune layout), you can then ask any of the 3 Gods (Odin, Freya or Loki, reading from left to right) for an interpretation by clicking on that God's icon.

Good Luck! Magnus Sillson 1994.

Shuffle The Runes

Clicking on the intertwined snakes will shuffle the bag of runes and give you 25 to choose from. Keep your question in mind and keep shuffling until you feel the time is right to select your runes.

The Various Runic Spreads

There are 4 types of spread used when casting the runes.

(1) The Single Rune.

Used for simple 'Should I/Shouldn't I' questions.

(2) The 3 Rune Spread.

Typically, this spread gives you an interpretation based on 'The situation as it is', 'Action required' and 'The new situation that will result'.

(3) The 5 Rune Spread.

Sometimes known as 'The 3 Lifetimes Spread', this layout is defined as 'Birth & Childhood', 'The present', 'The Future in this life', 'Past incarnation' and 'Future Incarnation'.

(4) The 6 Rune Spread.

Also known as 'The Runic Cross', this is the most involved spread. In sequence, the runes show you 'The past', 'The present', 'The Future', 'The foundation of the current situation', 'The challenge ahead' and 'Best outcome'.

