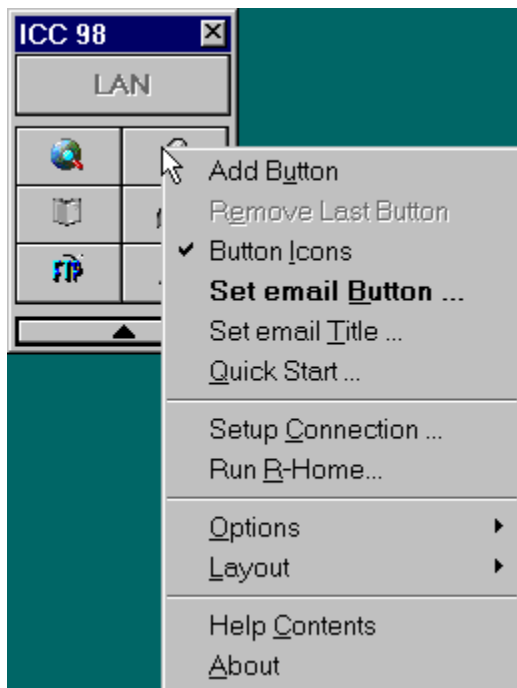


## Setup

Use the right mouse button (right-click) to display the ICC Setup menu. The button your mouse pointer is over when you right-click will cause the menu options to be specific to that button.

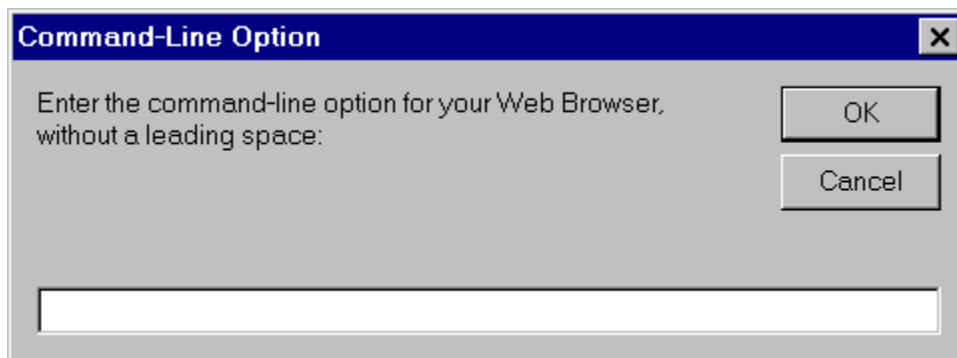
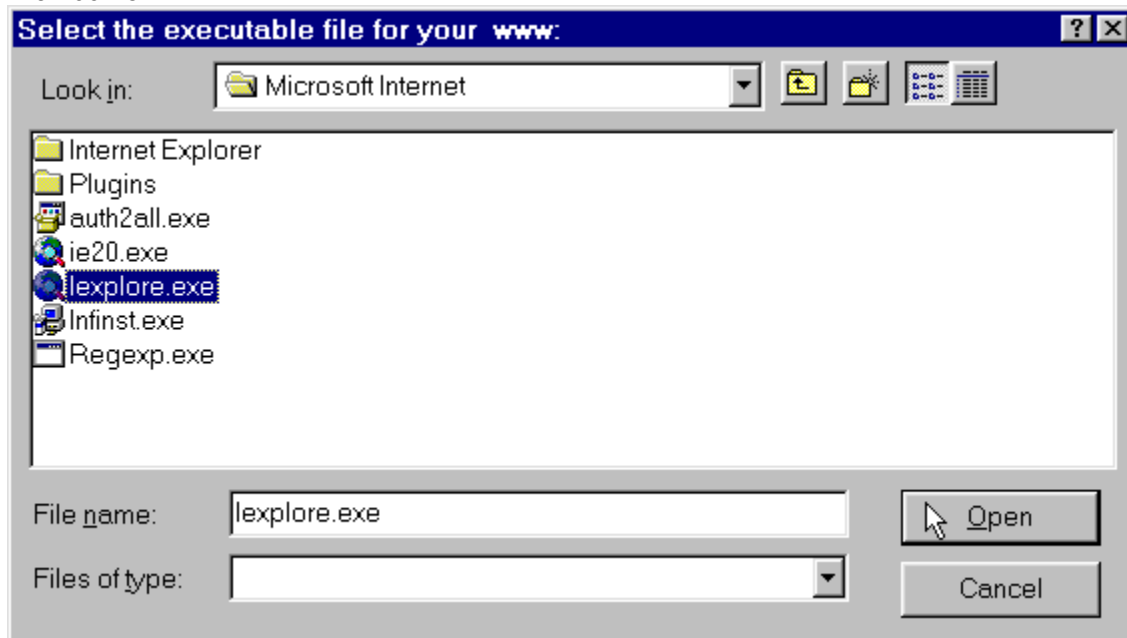
Click anywhere on the picture below for more information.



## Application Configuration

### Setting Buttons to Applications:

When you right-click on any application button you will see a menu item "Setup Button...". This will bring up a file dialog box like this, where you select the program to be activated by that button.



You will also be prompted for any command-line options you wish to use with that application. If none is needed, leave blank.

### Setting Titles:

Right-clicking on a button and selecting the "Set Title..." allows you to edit the button title as needed if you use applications other than the default titles.

**Change Button Title** ✕

Please enter a new title for www. If you select cancel the Button title will not be changed.

OK

Cancel

## Button Configuration

### Adding a Button:

you can add additional buttons to the ICC control panel, by simply clicking on this item in the setup menu and following the prompts.

### Removing Last Button:

You use this feature to remove custom added buttons. This item removes the last button on ICC every time it is selected. When no custom buttons exist, this item is disabled.

### Button Icons:

With this option checked, the buttons will display the icon of the application assigned to that button. Holding the mouse over the button will display the title you have set for that button.

### Setting Fonts:

Clicking this button displays a standard Windows font dialog which you use to set the size, style, and attributes of the fonts displayed on ICC. The default is an 8 pt. Times New Roman, regular. Note that with some True Type fonts, you can enter a number smaller than the displayed selections for font size.

**Note: The smaller buttons on the horizontal and vertical layouts may require setting a font smaller than ICC's default.**

### Turning 3D Fonts on and off:

This option turns the 3-D fonts off.

For example, ICC with 3-D fonts on:



ICC with 3-D fonts off:



## Options

### **Connect on Startup:**

With this option checked, ICC will initiate a connect sequence as soon as it is loaded. This will act as if you had pressed the connect button after starting ICC.

### **Show Tip of the Day:**

Checking this will display tips for using ICC each time it starts.

### **Always on Top:**

Checking this option makes ICC remain on top of all other windows. (checked by default)

### **Alternate Layout:**

This option toggles ICC between its two layouts. See [Layout](#).

### **Skip Splash Screen:**

Setting this option skips the Introductory Screen graphic when starting ICC.

### **Disable Online Timer:**

This option allows you to toggle the monitoring of the time accumulated on your current session and the total amount of time spent online. You can reset the total time by clicking on the 'Reset Online Timer' option on the right click menu of the globe in the system tray.

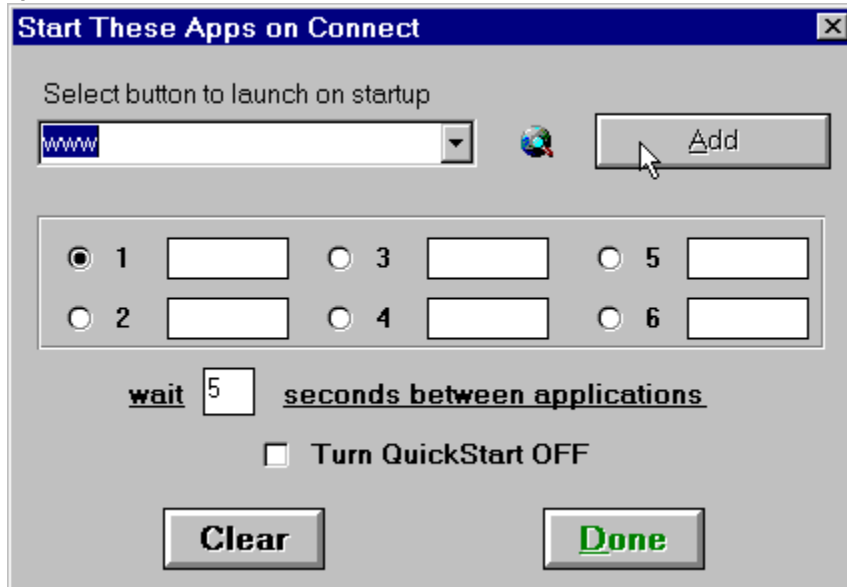
The online timer is viewed by holding your mouse over the globe icon in your taskbar while online.



## Quick Start

The QuickStart feature allows ICC to automatically launch up to six applications when you connect. The QuickStart only runs on the FIRST connection of an ICC session to prevent restarting the same application if you go offline and back on. To set up the QuickStart simply select an item from the list and click the add button. You can also adjust the time delay between launching multiple apps if needed.

To disable QuickStart without losing your saved settings, click the box marked "Turn QuickStart OFF".



The screenshot shows a dialog box titled "Start These Apps on Connect" with a close button (X) in the top right corner. The dialog has a grey background and contains the following elements:

- A label "Select button to launch on startup" above a text input field containing "www" and a dropdown arrow.
- A globe icon to the right of the input field.
- An "Add" button to the right of the globe icon.
- A section containing six radio buttons and input fields, arranged in two rows of three:
  - Row 1: Radio button 1 (selected), input field; Radio button 3, input field; Radio button 5, input field.
  - Row 2: Radio button 2, input field; Radio button 4, input field; Radio button 6, input field.
- A label "wait" followed by a text input field containing "5", followed by the text "seconds between applications".
- A checkbox labeled "Turn QuickStart OFF", which is currently unchecked.
- A "Clear" button at the bottom left.
- A "Done" button at the bottom right, with the text in green.

## Layout

### Rectangle Layout:

Checking the Rectangle option under the Layout menu item displays this layout:



### Horizontal Layout:

Checking the Horizontal option under the Layout menu item displays this layout:



(NOTE: When more than 6 buttons exist in this layout a scroll bar appears to allow the rest of the buttons to be used.)

### Vertical Layout:

Checking the Vertical option under the Layout menu item displays this layout:



You can also resize ICC by simply grabbing the border of the toolbar and drag it to another layout.



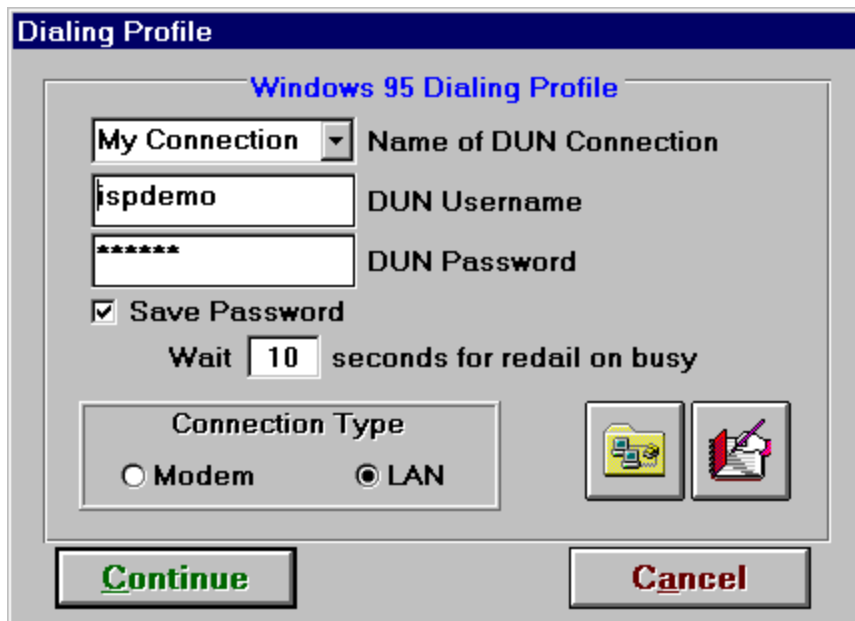
### **Compressing and Expanding ICC:**

The arrow button (on the bottom for the rectangle and vertical layouts and far right on the horizontal layout) allows you to compress ICC to show only the "Dial" button. This allows the toolbar to be out of the way. Clicking it again expands the toolbar back out to its normal display.



## Dialer Setup

ICC only uses Windows 95 Dial-Up Networking used with SLIP/PPP connections. ICC will start the Remote Connection when you click on "Dial" (or use the connect-on-startup). The Remote Connection must be specified in the "Name of DUN Connections" Section on the Dialing Profile form. ICC will then send the username and password provided in the username and password sections of the Dialing Profile form. ICC will also close the dialer when you click on disconnect.



The screenshot shows the "Dialing Profile" dialog box with the following fields and options:

- Name of DUN Connection:** A dropdown menu showing "My Connection".
- DUN Username:** A text box containing "ispdemo".
- DUN Password:** A text box containing "\*\*\*\*\*".
- Save Password:** A checked checkbox.
- Wait:** A spin box set to "10" seconds for redial on busy.
- Connection Type:** Radio buttons for "Modem" (unselected) and "LAN" (selected).
- Buttons:** "Continue" (green text) and "Cancel" (red text).

The "Dialing Profile" form contains three boxes. The first one requires the name of the Dial-Up Networking (DUN) connection that is already setup for the Internet. If you have one already set up it will be in the "Dial-Up Networking" folder in the "My Computer" folder on the desktop. If there is no such connection set up you will have to set the connection up before using ICC with the Windows 95 dialer, which may require installing Remote Networking services from the Windows 95 software. You can create a new DUN connection by clicking the Add New Entry button and following the dialogs. You can alternatively change an existing DUN connection by clicking on the Edit DUN Entry button and following the dialogs.

The next text box required is the DUN username. This is the username given to you by your Internet Service Provider in which the Dial-Up connection is configured to.

The last text box in the "Windows 95 Dialer Information" section is the password. This pertains to the password given to you by your internet service provider that the dial up connection is configured for.

### Local Area Network Connection:

If you are connecting to the Internet via your LAN, and not with a serial modem, then select the LAN connection option. The LAN option can also be used to disable the

Connect/Disconnect buttons on ICC for use with an incompatible dialer program, and then the ICC buttons will merely launch your applications.

Selecting the LAN setting in the Connection portion of the Set-Up screen removes the Connect/Disconnect buttons. This can also be used with a modem connection if you are using an incompatible dialer program which ICC's Connect function cannot control.

## **Support**

For help with any setup or operations problems, please send email to [support@usefulware.com](mailto:support@usefulware.com).

The entire evolution of ICC has been driven by user's needs, and our customer service will always be our top priority. All email will be answered promptly. If you have trouble, we will work with you until it is resolved.

Before writing, be sure to read the relevant section of the help file. You may find the answer you need. Make sure your dialer connects properly when NOT using ICC. If so, it should function identically with ICC.

Feel free to send any comments or suggestions for future improvements.

## **Licensing and Registration**

### **License Information:**

Internet Control Center, © 1995-1998 UsefulWare Inc.

All rights reserved.

All users of the Internet Control Center (ICC) must accept this agreement in its entirety. Your use constitutes agreement to these terms.

ICC is supplied AS IS. UsefulWare, Inc. disclaims all warranties, expressed or implied, including, without limitation, the warranties of merchantability and of fitness for any purpose. UsefulWare, Inc. assumes no liability for any damages, direct or consequential, which may result from the use of ICC. If this is unacceptable to you, discontinue use now.

ICC is distributed as shareware and is provided at no charge to the user for evaluation. You may distribute it freely, as long as it is not altered or included in another package. Only distribute the original iccnnn.exe archive with all files included. Copies are available on our site and other archives.

If you received ICC as part of a startup package which has been customized for your Internet Service Provider, you have a custom version which MAY NOT be redistributed. It will be stamped with logos and trademarks of your ISP.

Anyone wishing to distribute ICC for any kind of remuneration, or as part of a package or set of programs, must first contact UsefulWare. Rack vendors, mail-order houses, etc. must have written permission from UsefulWare Inc. to distribute ICC.

If you decide to continue using ICC after a reasonable trial period, you must pay the registration fee to UsefulWare Inc.. This will license one copy for use on one machine. Site license arrangements are available.

### **Registration Options:**

The single-user price for ICC is \$9.00. You may use one of the following options to register:

- A. Use our Online Registration Site with your VISA or MasterCard. Point your forms-compatible browser to [www.usefulware.com](http://www.usefulware.com).
- B. Send a fax to 404-424-2626 with your name, credit card number and expiration, email address, and the billing address for your credit card. If the name on the card is different, include that.
- C. Send email to [admin@usefulware.com](mailto:admin@usefulware.com) with the same information as above.

D. Mail a check or money order for \$9.00 in U.S. funds to

UsefulWare Inc.

ICC Registration

1341 Canton Road Suite C-1

Marietta, GA USA 30066

**Please include email address.**

All registrations are normally sent out within 24 hours. Thank you for choosing the Internet Control Center.

## **Internet Service Providers**

UsefulWare was established in 1994 as the first commercial vendor of custom software packages for Internet Service Providers. We provide a complete one-stop solution for getting new users online, and include the world's most popular applications for Windows 3.x, Win95 and Macintosh with all licensing prepaid. We are unique in providing toll-free technical support for all ISP's who use our software for their new users, with a Triple-Money-Back Support Guarantee.

For more information please visit our web site at

**[www.usefulware.com](http://www.usefulware.com)**

We are authorized resellers for all of the most popular Internet applications including Netscape Navigator, with packages available for Windows 3.1, Windows 95, and Macintosh.

UsefulWare Inc.

1341 Canton Road Suite C-1

Marietta, GA USA 30066

