

Contents

[Using ProPanel](#)

[Using ThrustMaster Game Device Viewer](#)

[Un-installing ProPanel and ThrustMaster Game Device Viewer](#)

[Contacting ThrustMaster](#)

Using ProPanel

1 - To open ProPanel use your mouse and double-click on the **My Computer** icon on your Windows 95 desktop. Next, double-click on the **Control Panel** folder icon. From within Control Panel scroll down the list to the **ProPanel** icon. Double-click on the ProPanel icon.

2 - Once in ProPanel click on the **Device Selection** Button.

3 - **From the list**, select the device you wish to calibrate.

NOTE: Please check the entire list for the ThrustMaster driving control you wish to calibrate.

Supported Devices:

ThrustMaster T1/T2 Driving Controls

ThrustMaster Grand Prix 1 Driving Control

ThrustMaster NASCAR Pro w/ combined pedals

ThrustMaster NASCAR Pro w/ separate pedals

ThrustMaster Formula Pro w/ combined pedals

ThrustMaster Formula Pro w/ separate pedals

4 - Click on the **Calibrate** Button and follow the on- screen instructions.

Please note - If you have a fast system or are using a game port other than ThrustMaster's ACM speed adjustable game card, the cross-hair position marker may appear to be "stuck" in the lower right corner of the calibration window. In extreme cases the position marker may not move at all during the calibration routine. This has no effect on the calibration itself. Continue the calibration process even if you don't see any visible movement of the marker.

5 - Once you have completed calibration, click on the **Test** Button. The position marker should be centered. Move the controller to verify it has been calibrated correctly. Press the controller buttons to confirm that they work properly.

6 - Click on the  button when you are finished.

7 - You are ready to play!


Additional Notes:

You need to re-calibrate only if you change controllers. If you keep the same controller connected all the time, you should need to calibrate only once (when you install the controller), as calibration values are saved to your hard disk.

The Microsoft Joystick panel is still available, if you wish to use it. Just be aware that calibrating the controller using the Joystick panel overwrites the values saved by Propanel. Likewise, using ProPanel for calibration overwrites values saved by the

Joystick panel.

Device button

Next to the **Device Selection** button you will see the selected controller icon.  If you click on this, the current device settings are displayed. It is possible to do some customization of the control here.

Why use the ProPanel at all?

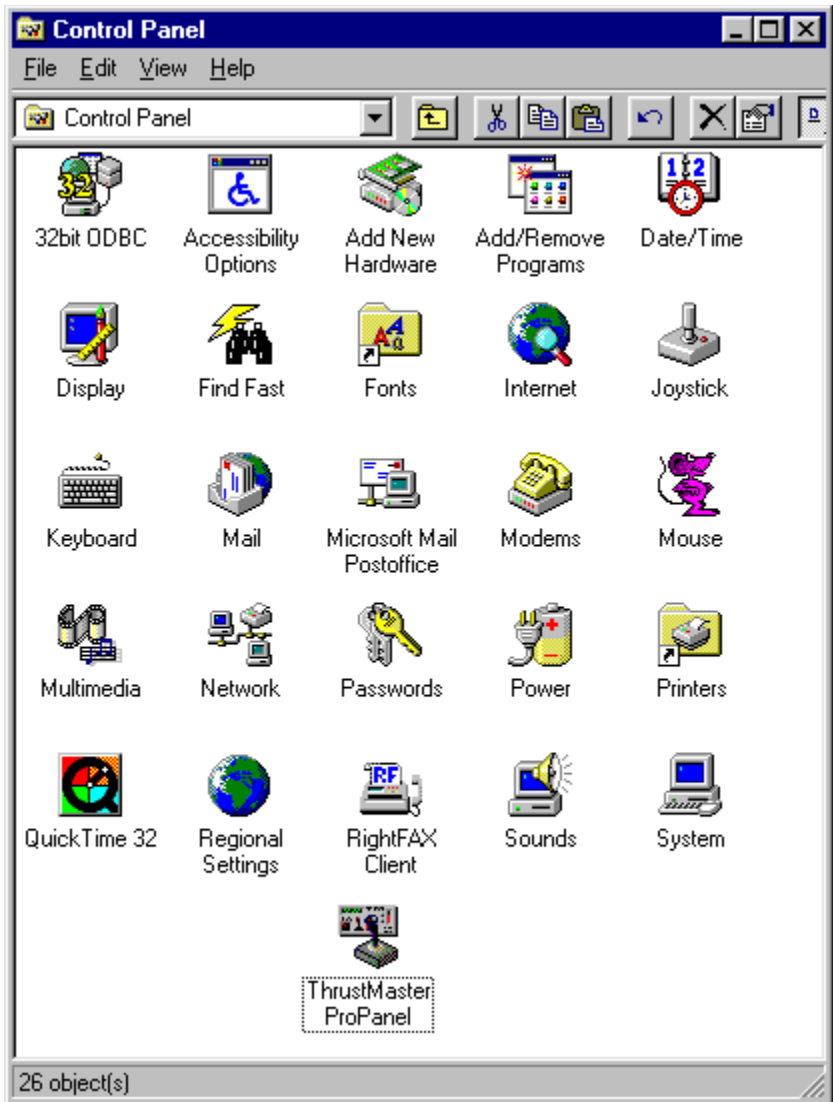
ProPanel solves some problems the standard Joystick panel has with accurate reporting of joystick data, especially on faster computers or with game ports on sound cards and multi-IO cards.

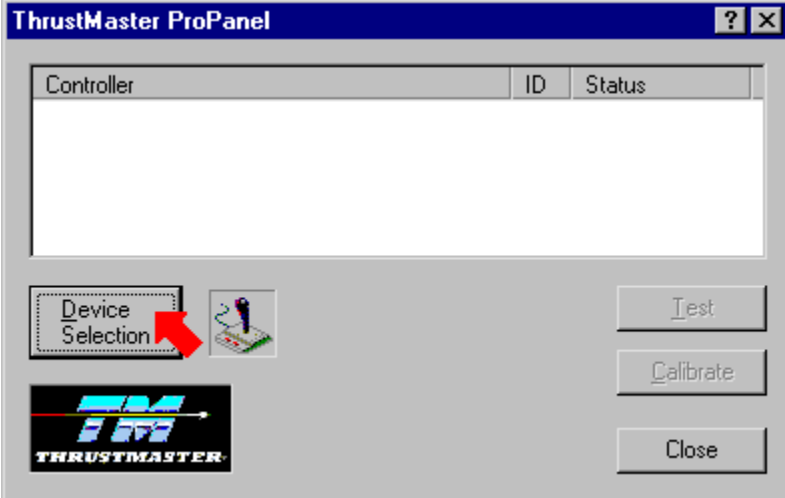


My Computer



Control Panel



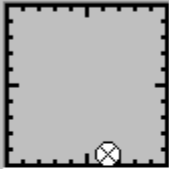




ThrustMaster NASCAR Pro Calibration



ThrustMaster NASCAR Pro w/combined pedals



Wheel/Pedals



Throttle



PDV Control



Rudder



L Brake



R Brake

Calibration Instructions

Make sure the steering wheel is centered, do not press the gas and brake pedals, then push the shifter forward on the console.

< Back

Next >

Cancel

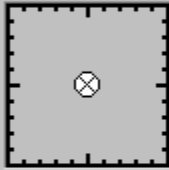
Joystick 1 Test



ThrustMaster Formula T1, T2 driving system

To test your joystick's operation, move its controls now.

Axis Inputs



Joystick X/Y



Throttle



POV Control



Rudder



L Brake



R Brake

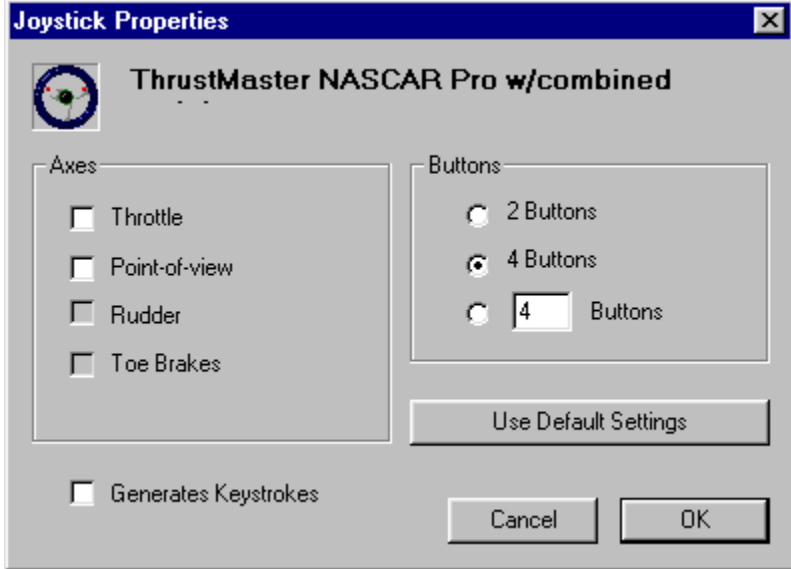
Button Inputs



1 2 3 4 5 6 7 8

Keystrokes:

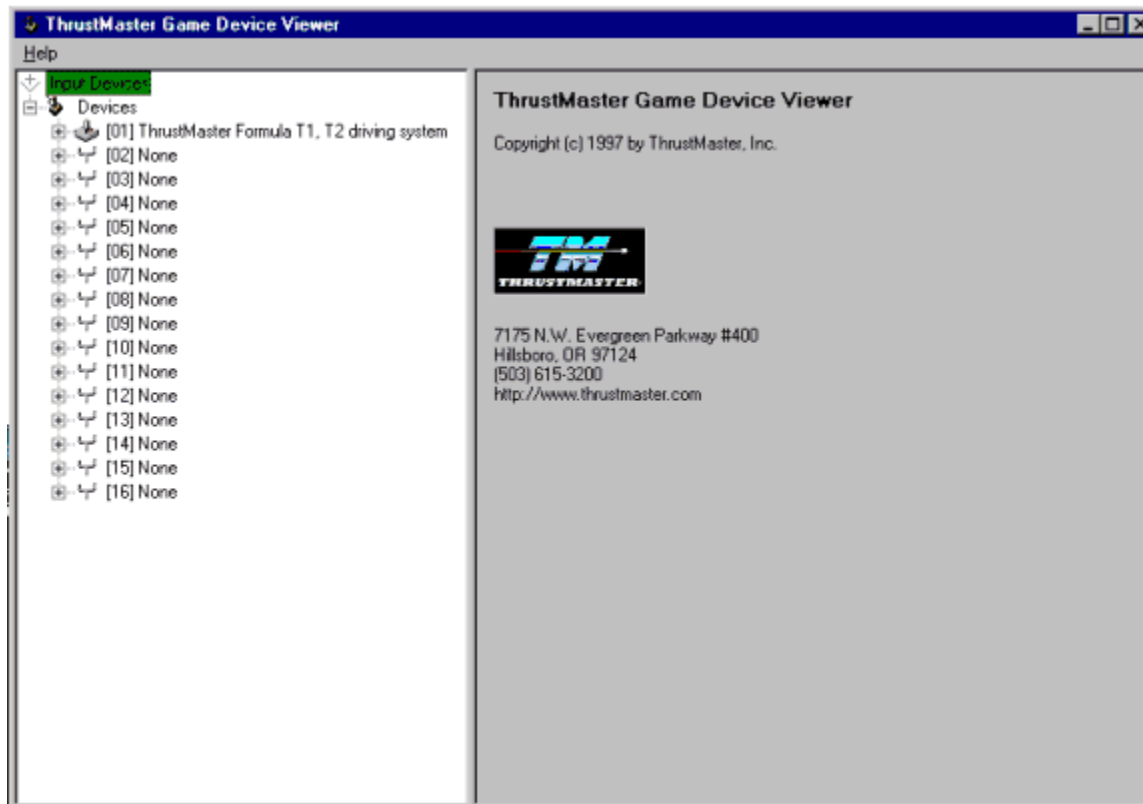
OK




Using ThrustMaster Game Device Viewer

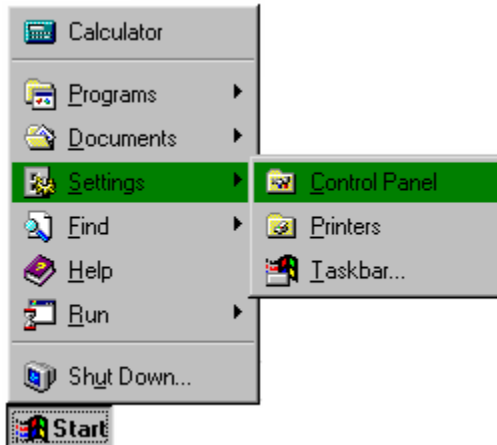
ThrustMaster Game Device Viewer, also sometimes referred to as Joyview, is a diagnostic utility that allows the Joystick Registry values to be viewed without affecting the registry. It is being distributed for the sole purpose of assisting our customer support representatives with diagnosing and resolving joystick problems in the Windows® 95 environment.

The ThrustMaster Game Device Viewer utility is intended to only be used at the request of a ThrustMaster customer support representative. The user will be instructed on how to execute the program and what information to look for.



Un-Install Steps

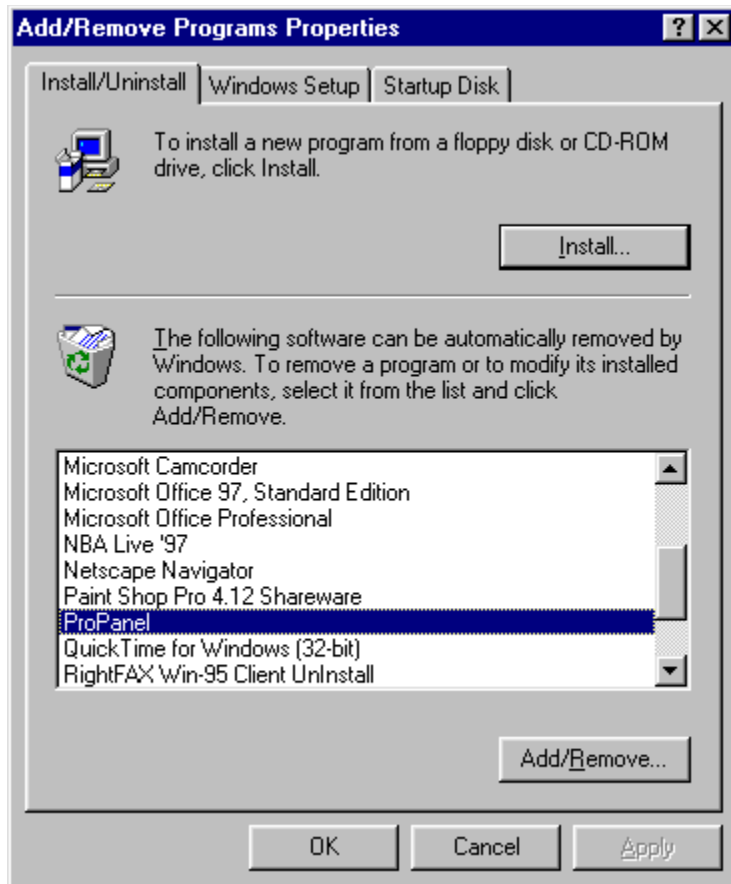
1. Click on the  Button located on your taskbar.
2. Click Settings then on Control Panel



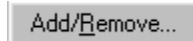
3. Find the Add/Remove Programs icon and double-click on it



4. In the window that appears, arrow down until you find ProPanel and click on it to highlight it.



5. Click on Add/Remove button to begin the un- install.



6. Follow screen prompts.

Contacting ThrustMaster

General Information

Customer Support

World Headquarters:

ThrustMaster, Inc.
7175 NW Evergreen Pkwy #400
Hillsboro, Oregon 97124
Phone: (503) 615-3200
Fax: (503) 615-3300

European Office:

ThrustMaster, Inc.
Unit 8, Station Industrial Park
Oxford Road, Wokingham
Berkshire, United Kingdom RG41 2YQ
Phone: +44-118-978-7087
Fax: +44-118-977-6290

USA

Europe

eMail:

DOS/Windows Users- techsupp@thrustmaster.com
Macintosh Users- macsupp@thrustmaster.com
Service/Repair- service@thrustmaster.com

Phone:

(503) 615-3200 Monday - Friday, 7AM - 6PM Pacific Time

Fax:

(503) 615-3300

<German Customers>

Technical Support and Repairs Center

Tel: +44 (0) 1189 770 725

Monday - Friday 3:00pm - 6:00pm (GMT)

Fax: +44 (0) 1189 776 290

eMail:

techsupp@thrustmaster.com

Product Return Address:

ThrustMaster, Inc.

Unit 8, Station Industrial Park

Oxford Road, Wokingham

Berkshire RG41 2YQ

United Kingdom

General Contact Information:

ThrustMaster, Inc.

European Headquarters

Unit 8, Station Industrial Park

Oxford Road

Wokingham, Berkshire RG41 2YQ

United Kingdom

Tel: +44 (0) 1189 787 087

Fax: +44 (0) 1189 776 290

Technical Support and Repair Center:

Tel: +49 (0) 271 488 9430

(Monday - Friday 4:00pm - 7:00pm Central European Time)

Fax: +49 (0) 271 488 9431

eMail:

techde@thrustmaster.com

Product Return Address:

ThrustMaster, Inc.

Samuel-Frank-Str. 19a

D-57076 Siegen

Germany

General Contact Information:

ThrustMaster, Inc.

Erdinger Strasse 84

85356 Freising

Germany

Tel: +49 (0) 816 187 1093

Fax: +49 (0) 816 187 1084

