

Symantec Visual Page Getting Started

Installation and Tour

The software described in this book is furnished under a license agreement and may be used only in accordance with the terms of the agreement.

Copyright Notice

Copyright © 1998 Symantec Corporation.

All Rights Reserved.

The *Symantec Visual Page Getting Started Guide* is copyrighted and all rights are reserved. Information in this document is subject to change without notice and does not represent a commitment on the part of Symantec Corporation. The document may not, in whole or in part, be copied, photocopied, reproduced, translated, or reduced to any electronic medium or machine-readable form without prior consent, in writing, from Symantec Corporation..

Trademarks

Symantec Visual Page is a trademark of Symantec Corporation. Other brands and their products are trademarks of their respective holders and should be noted as such.

Symantec Corporation
10201 Torre Avenue
Cupertino, CA 95014
408/253-9600

Printed in the United States of America.

10 9 8 7 6 5 4 3 2 1

SYMANTEC LICENSE AND WARRANTY

The software which accompanies this license (the "Software") is the property of Symantec or its licensors and is protected by copyright law. While Symantec continues to own the Software, you will have certain rights to use the Software after your acceptance of this license. Except as may be modified by a license addendum which accompanies this license, your rights and obligations with respect to the use of this Software are as follows:

• You may:

- (i) use one copy of the Software on a single computer;
- (ii) make one copy of the Software for archival purposes, or copy the software onto the hard disk of your computer and retain the original for archival purposes;
- (iii) use the Software on a network, provided that you have a licensed copy of the Software for each computer that can access the Software over that network;
- (iv) after written notice to Symantec, transfer the Software on a permanent basis to another person or entity, provided that you retain no copies of the Software and the transferee agrees to the terms of this agreement; and
- (v) if a single person uses the computer on which the Software is installed at least 80% of the time, then after returning the completed product registration card which accompanies the Software, that person may also use the Software on a single home computer.

• You may not:

- (i) copy the documentation which accompanies the Software;
- (ii) sublicense, rent or lease any portion of the Software;
- (iii) reverse engineer, decompile, disassemble, modify, translate, make any attempt to discover the source code of the Software, or create derivative works from the Software; or
- (iv) use a previous version or copy of the Software after you have received a disk replacement set or an upgraded version as a replacement of the prior version, unless you donate a previous version of an upgraded version to a charity of your choice, and such charity agrees in writing that it will be the sole end user of the product, and that it will abide by the terms of this agreement. Unless you so donate a previous version of an upgraded version, upon upgrading the Software, all copies of the prior version must be destroyed.

• Sixty Day Money Back Guarantee:

If you are the original licensee of this copy of the Software and are dissatisfied with it for any reason, you may return the complete product, together with your receipt, to Symantec or an authorized dealer, postage prepaid, for a full refund at any time during the sixty day period following the delivery to you of the Software.

• Limited Warranty:

Symantec warrants that the media on which the Software is distributed will

be free from defects for a period of sixty (60) days from the date of delivery of the Software to you. Your sole remedy in the event of a breach of this warranty will be that Symantec will, at its option, replace any defective media returned to Symantec within the warranty period or refund the money you paid for the Software. Symantec does not warrant that the Software will meet your requirements or that operation of the Software will be uninterrupted or that the Software will be error-free.

THE ABOVE WARRANTY IS EXCLUSIVE AND IN LIEU OF ALL OTHER WARRANTIES, WHETHER EXPRESS OR IMPLIED, INCLUDING THE IMPLIED WARRANTIES OF MERCHANTABILITY, FITNESS FOR A PARTICULAR PURPOSE AND NONINFRINGEMENT. THIS WARRANTY GIVES YOU SPECIFIC LEGAL RIGHTS. YOU MAY HAVE OTHER RIGHTS, WHICH VARY FROM STATE TO STATE.

• Disclaimer of Damages:

REGARDLESS OF WHETHER ANY REMEDY SET FORTH HEREIN FAILS OF ITS ESSENTIAL PURPOSE, IN NO EVENT WILL SYMANTEC BE LIABLE TO YOU FOR ANY SPECIAL, CONSEQUENTIAL, INDIRECT OR SIMILAR DAMAGES, INCLUDING ANY LOST PROFITS OR LOST DATA ARISING OUT OF THE USE OR INABILITY TO USE THE SOFTWARE EVEN IF SYMANTEC HAS BEEN ADVISED OF THE POSSIBILITY OF SUCH DAMAGES.

SOME STATES DO NOT ALLOW THE LIMITATION OR EXCLUSION OF LIABILITY FOR INCIDENTAL OR CONSEQUENTIAL DAMAGES SO THE ABOVE LIMITATION OR EXCLUSION MAY NOT APPLY TO YOU.

IN NO CASE SHALL SYMANTEC'S LIABILITY EXCEED THE PURCHASE PRICE FOR THE SOFTWARE. The disclaimers and limitations set forth above will apply regardless of whether you accept the Software.

• U.S. Government Restricted Rights:

RESTRICTED RIGHTS LEGEND. Use, duplication, or disclosure by the Government is subject to restrictions as set forth in subparagraph (c) (1) (ii) of the Rights in Technical Data and Computer Software clause at DFARS 252.227-7013 or subparagraphs (c) (1) and (2) of the Commercial Computer Software-Restricted Rights clause at 48 CFR 52.227-19, as applicable, Symantec Corporation, 10201 Torre Avenue, Cupertino, CA 95014.

• General:

This Agreement will be governed by the laws of the State of California. This Agreement may only be modified by a license addendum which accompanies this license or by a written document which has been signed by both you and Symantec. Should you have any questions concerning this Agreement, or if you desire to contact Symantec for any reason, please write:

Symantec Customer Service, 175 W. Broadway,
Eugene, OR 97401.

License and Warranty Addendum

The software you are acquiring has been specially configured to run on a network, and consequently Symantec grants to you the right to use the enclosed Software on a computer network provided that for each and every concurrent user on the network, you have acquired and dedicated one licensed copy of the software.

International ProofReader(TM) text proofing software copyright 1995 by Inso Corporation. All rights reserved.

International ProofReader(TM) English text proofing software copyright 1995 by Inso Corporation. All rights reserved. Reproduction or disassembly of embodied algorithms or database prohibited.

Acknowledgments

Special thanks to John Bealkowski, Sami Ben-Romdhane, David Dodd, Dennis Dunham, Rich Feinberg, Steven Frehe, Dawn Hutton, Lauren Katzive, Sean Keily, Terry Lord, Greg Macdonald, Carl Melton, Shannon Michael, Nancy Weber, and Essam Zaky for their help with this project. Additional thanks to Daniel W.K. Chow.

The *Visual Page Getting Started Guide* was developed and written by Cheryl Chambers and Orlando Cordero. Editing by Lauren Katzive, Nancy Weber, and Kimberly Haeger.

C O N T E N T S

Chapter 1 Welcome to Visual Page

About this book	1-2
About the audience	1-2
Why use this tour	1-3
Typographic conventions	1-4
About the Web	1-4
Publishing on the Web	1-4
Understanding links and locators	1-5
Where to find more information	1-7
About Visual Page	1-7
Local project management	1-8
FTP-based Web site publishing	1-8
Java support	1-8
Two-way editing	1-8
The Visual Editor	1-9
The source editor	1-10
Web page templates	1-10
What's next	1-10

Chapter 2 Installing Visual Page

System requirements	2-2
CD-ROM Installation	2-2

Chapter 3 Introducing the Amazing Adventures Web site

What you need	3-2
Setting the scene	3-2
Identifying goals for the Web site	3-2
Deciding and outlining the general content	3-3
Walking through the finished Web site	3-5
Creating the Project folder and file for the Tour	3-5
Importing the Tour folder	3-12
Previewing the opening page	3-14
Interacting with the home page	3-17
Using the island map page	3-18
Looking at the Client Comments Web page	3-19

Browsing the Custom Tours and e-mail Web pages	3-22
What's next	3-24

Chapter 4 Building the Amazing Adventure Web pages

Creating the Client Comments page	4-2
Creating a new Web page	4-3
Adding the new Web page to the Tour folder	4-5
Adding the client comment text	4-8
Adding the Client Comments title graphic	4-9
Creating the island photo layout	4-10
Flowing text around a photo	4-10
Reducing the Bungbusi photo	4-13
Setting a photo to the right of the text	4-15
Styling the paragraph titles	4-17
Creating the Package Trips table	4-18
.....	4-19
Adding the table	4-19
Widening the top cell of the table	4-21
Inserting the graphic and changing the cell color	4-21
Adding the tour text to the table	4-24
Creating space in the table for options	4-25
Finishing the Custom Tours table	4-27
Centering text in the middle columns	4-28
Creating the reply form	4-30
Adding text boxes to the reply form	4-31
Adding the radio buttons	4-32
Adding customer comment areas	4-33
Adding the Submit and Clear buttons to the e-mail form	4-34
Summary	4-37
What's next	4-38

Chapter 5 Adding life to the Amazing Adventures Web site

Creating movement on the Home page	5-2
Adding the plane animation	5-3
Adding the interactive slide show	5-6
Aligning the applets and graphics	5-7
Making the map clickable	5-7
Marking the descriptions with anchors	5-8

Setting the map to function as an image map	5-8
Linking the towns to their descriptions	5-9
Creating the Home page	5-10
Opening the new page — with frames	5-10
Setting up the Home page Table of Contents	5-12
Setting up the opening page display	5-13
Creating a working Table of Contents	5-15
Linking Web pages to the Table of Content icons	5-15
Setting the display destination of the TOC links	5-16
Testing the Home page Table of Contents	5-18
Publishing your Web site	5-19
Summary	5-20

Chapter 6 Support Information

Glossary

Welcome to Visual Page

Symantec® Visual Page™ is an easy-to-learn, easy-to-use, WYSIWYG (what-you-see-is-what-you-get) visual Web page editor.

If you are new to Web page building you'll appreciate using Visual Page to drag and drop elements into your Web page without having to learn the Web's markup language, HTML.

Of interest to the more experienced Webmaster, Visual Page generates excellent HTML code and includes a source editor. Changes to the source editor are instantly reflected in the visual editor and vice versa.

This chapter familiarizes you with some of the basics of getting started with Visual Page. It contains the following sections:

- About this book
- About the Web
- About Visual Page

If you are confident with your knowledge of the Web and its associated vocabulary, you can skip “About the Web” and go to [“About Visual Page” on page 1-7](#).

In addition to this book, the *Visual Page User's Guide* is part of the Visual Page application. Consult the User's Guide for detailed descriptions and explanations of all of the Visual Page features and concepts. Online help is also included with the application.

About this book

In this book you will find:

- An overview of Visual Page — in this chapter
- Installation instructions in Chapter 2
- A walkthrough of the Visual Page Tour Web site in “[Introducing the Amazing Adventures Web site](#)” on page 3-1
- Steps for “[Building the Amazing Adventure Web pages](#)” on page 4-1, in which you:
 - Creating the Tour project folder on “[Creating the Project folder and file for the Tour](#)” on page 3-5
 - Build a new Web page on “[Creating the island photo layout](#)” on page 4-10
 - Create a Web page layout in “[Creating the island photo layout](#)” on page 4-10
 - Format a Web page using tables in “[Creating the Package Trips table](#)” on page 4-18
 - Place text fields and buttons in “[Creating the reply form](#)” on page 4-30
- Steps for adding interactivity to your Web pages in “[Adding life to the Amazing Adventures Web site](#)” on page 5-1, including:
 - “[Creating movement on the Home page](#)” on page 5-2
 - “[Making the map clickable](#)” on page 5-7
 - “[Creating a working Table of Contents](#)” on page 5-15
 - “[Publishing your Web site](#)” on page 5-19
- Customer support information in Chapter 6

The files you need for the tour are installed for you when you install Visual Page using the Typical (default) installation.

About the audience

This book assumes that you are familiar with and know how to perform standard Windows 95 operations, such as clicking and dragging, double-clicking, opening and closing files and applications, and saving changes. If

you need help with these operation, see the online help that installs with the operating system. You can access it by choosing Help from the Start menu.

Why use this tour

If you want to experience the excitement of easily building a Web page from beginning to end, you should work through the tour presented in this book.

Using the Visual Page tour, you will become familiar with the Visual Page application by following detailed procedures for building a working Web page. This tour requires no previous experience in Web Page authoring or HTML coding.

As you build the Web pages needed to construct the Amazing Adventures Web site, you will learn to use many of the Visual Page features, including:

- Creating a project
- Creating a plain Web page
- Creating a Web page with frames
- Importing text and graphics,
- Adding and running Java applets
- Flowing text around graphics
- Creating and modifying a table
- Linking text and graphics
- Using image maps and anchors
- Creating an e-mail form

Typographic conventions

The following typographic conventions are used throughout this book:

Convention	Meaning
<code>Computer voice</code>	Text, which is exactly as it appears on your computer, is in computer voice style.
Bold	At the first occurrence of the definition of a term, it is in bold text.

About the Web

The Internet is a global set of interconnected computers, like the network you may use at work or school, but on a larger scale. It has been in use for over thirty years but the Internet has only recently become popular. This is primarily due to the **World Wide Web** (otherwise known as the Web or WWW) — the “front end” of the Internet — which supports graphics, animation, and sound.

The following sections help familiarize you with the concepts and vocabulary associated with the Web:

- Publishing on the Web
- Understanding links and locators

Publishing on the Web

You use Visual Page to construct and publish documents for the World Wide Web. These documents, known as **Web pages**, are stored on an Internet server and displayed by the Web browser on your computer.

Web browsers display Web pages by interpreting the special HyperText Markup Language (**HTML**) **tags** which are used to encode Web pages with display information. When you use Visual Page, it takes care of adding the HTML tags, while you move parts of the Web page into place in a visual representation of the Web page.

Web pages usually are linked to many different files, such as graphic and multimedia files. You typically keep these files in a folder or set of folders on your disk drive, while you construct your Web site. This folder is known as your **local Web site, or project folder**. You use the Visual Page Project Manager to manage your Web sites.

This site's collection of linked files and Web pages are typically tied together into a cohesive collection of information by a home page. The **home page** typically contains a topic list which links it to other Web pages in its Web site.

When you publish your Web site, you upload the local project folder (and its contents) to a **Web server**, which contains the software that "serves" your Web page out to Web browsers on computers that are connected to the Internet. Once your local project is published to the Web server, it becomes a **Web site**.

A data protocol called the **File Transfer Protocol** (FTP) is required to upload and download files from your system to and from a Web server. Visual Page Project Manager provides extensive FTP support, including the ability to upload, download, and modify server-based files. For more information about the Visual Page Project Manager, see the *Visual Page User's Guide*.

Understanding links and locators

Web page **links** are specially formatted text or graphics that, when clicked on, display more text or graphics. These files may include other Web pages or files with different kinds of multimedia, pictures, sound, animation, entry forms, Java applets, movies, and more.

A links use a **Uniform Resource Locator** (URL) to locate other Web files. URL is an address for a Web file that can reside on your hard drive or on a computer across the world. When you create links using Visual Page, you can see the URLs which Visual Page generates.

The following example shows a hypothetical URL:

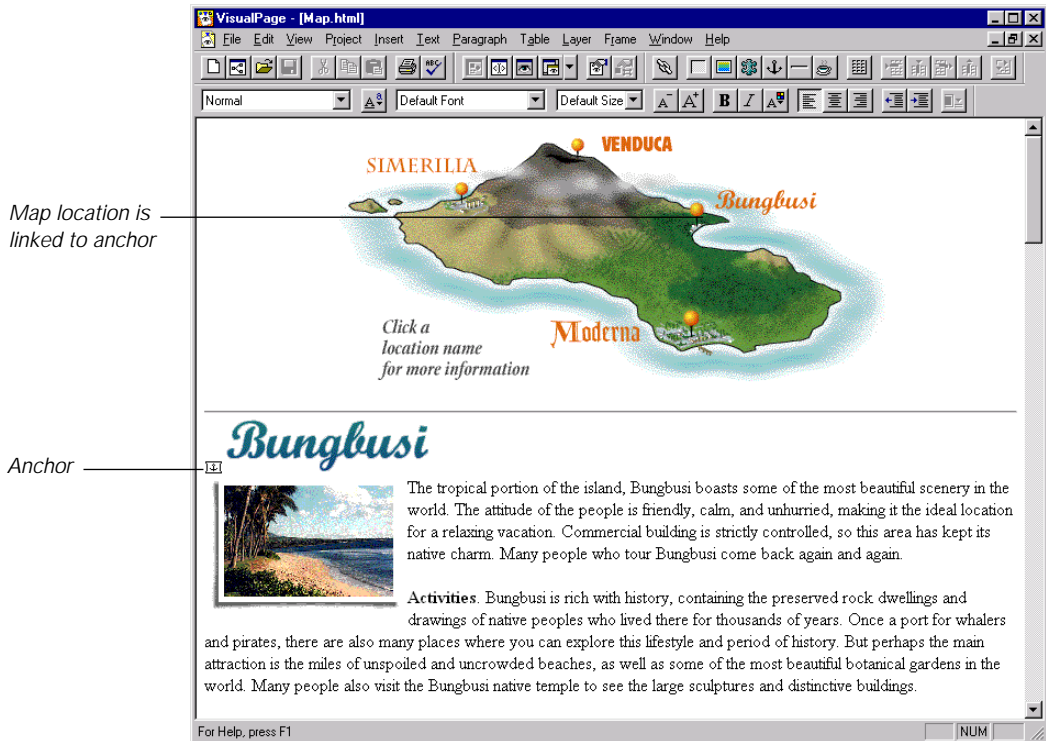
`http://www.symantec.com/tools/docs/User Guide.html`

<code>http://</code>	<code>www.symantec.com</code>	<code>/tools/docs/</code>	<code>User Guide.html</code>
<code>_____</code>	<code>_____</code>	<code>_____</code>	<code>_____</code>
Protocol	Domain	Directory path	File name

Refer to the above URL as you read the description of its parts:

- Protocol: rules governing the transfer of data over the network; the Internet uses the HyperText Transfer Protocol: **http**
- Domain: host name and Internet namespace: **www.symantec.com**
- Directory path: the relative location of the file: **tools/docs**
- File name: the Web page, graphic, or sound file:
User_Guide.html
- Anchor: a marker which identifies a location inside a file to which you can link.

In the island map Web page, which you'll work on in the tour, a mouse click on the map at the top of the Web page scrolls it to the appropriate title further down on the page because map locations are linked to anchors which you place in the text. You can see an anchor in the following illustration:



For more information about links and anchors, see the *Visual Page User's Guide*.

Where to find more information

If you want to understand more about the World Wide Web, there are many books that explain the Internet, Web pages, and the Web's underlying language, HTML. They may be found at all levels of complexity.

Following are some useful books which you can use to quickly understand the basics of HTML and the Internet:

- *How to Use HTML 3*, by Scott Arpajian (Ziff Davis Press)
- *HTML Visual Quick Reference* (2nd ed.), by Dean Scharf (Que Books)
- *Internet and World Wide Web Simplified*, by Ruth Maran (IDG Books)

For more in-depth discussions and advanced topics, see the following:

- *The Internet Book*, By Douglas Comer (Prentice-Hall, Inc.)
- *Web Publisher's Design Guide*, by Mary Jo Fahey (Coriolis)
- *Elements of Web Design*, by Darcy DiNucci, with Maria Giudice and Lynne Stiles (Peachpit Press)
- *Designing Large-Scale Web Sites*, by Darrell Sand (Wiley Computer Publishing)

About Visual Page

To illustrate Visual Page's features, the Visual Page tour will have you use Visual Page to create the tour's Web pages. When you're using the visual editor you drag and drop contents like movies, graphics, tables, and links into your Web page. Visual Page automatically generates the HTML source required to display the Web page.

There are many Visual Page tools and features. The tour introduces you to a subset. You can find the rest documented in the *Visual Page User's Guide*.

The following sections introduce the Visual Page feature set:

- Project windows
- FTP Web site publishing
- Java support
- Two-way visual and source editors
- Web page templates
- Summary of Visual Page features

Local project management

As an aid to building your Web page and Web site, Visual Page has a unique project manager that provides easy management and access to your local Web site, or project. The Visual Page Project Manager facilitates drag-and-drop operations and allows you to easily locate the files you are using in your Web site. For this tour, you will be working locally, which means that you will create the Amazing Adventures Web site on your PC.

FTP-based Web site publishing

After a Web site is finished you can use the Visual Page Project Manager to connect to an FTP server and publish your files to a Web server. When you put a document on the Web, users who have access privileges can view it by using their local Web page browsers to access it on the World Wide Web.

Java support

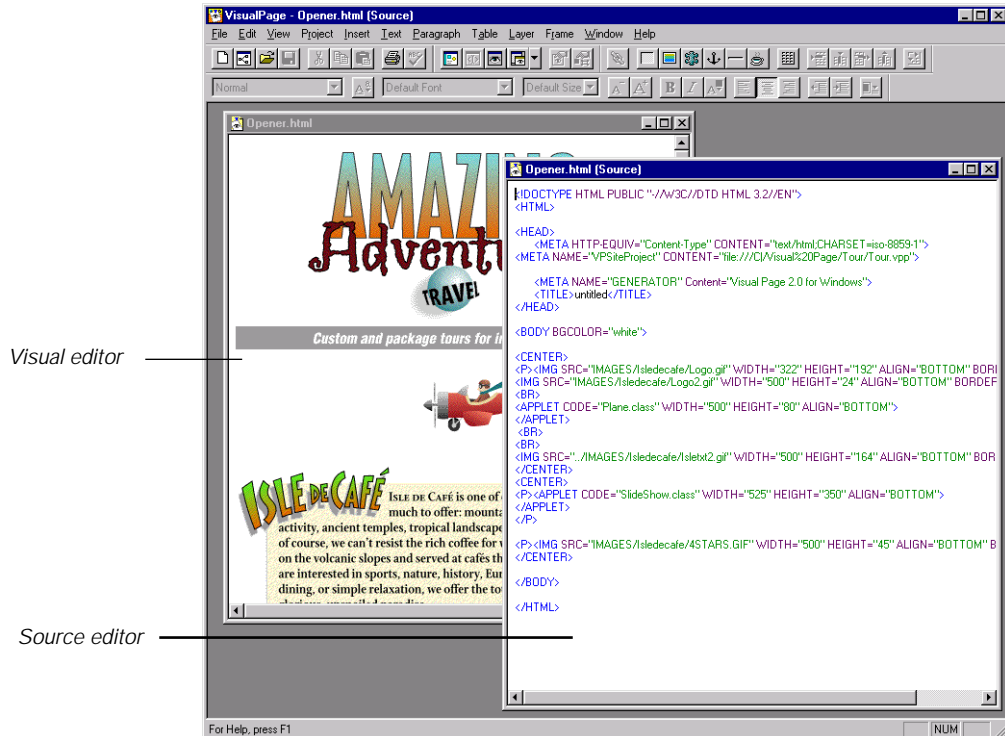
Visual Page supports Java Virtual Machine. This enables you to dynamically preview Java applets on any Windows 95 or NT 4.0 machine as you develop a Web page. Visual Page also supports Web browser plug-ins.

Two-way editing

Visual Page's two-way editing system includes a visual editor and a source editor. You use the visual editor to add visual elements like graphics, animations, and text to your Web page, and use the source editor to display and edit the HTML tags Visual Page generates.

You will see in the Visual Page tour that you can even place the source editor next to the visual editor and watch the HTML tags generate as you change items in your Web page.

The following illustration shows two views of the Amazing Adventures opening Web page; one in the visual editor and the other in the source editor:



The Visual Editor

As Web pages become more visually sophisticated, page layout becomes more important. When you use Visual Page, you directly manipulate the layout of display elements like text and graphics. The HTML code for displaying these items is generated simultaneously by Visual Page but it is normally hidden from view. As a result, you can see your Web page as you put them together, which look almost exactly the same as the finished Web page will look in a Web browser.

Before tools like Visual Page became available, to build a Web page you had to manually enter HTML tags and URLs for Web pages by using a text

editor or word processor. To see the Web page display the person building the Web page had to leave the text editor and open the HTML text file in an external Web page browser.

The source editor

If you want to see or edit the HTML source, you can use the source editor to do so. Visual Page instantly generates the corresponding HTML source as you insert Web page elements in the visual editor.

The HTML source editor provides color-coded text and a toolbar corresponding to the Web page elements. When you make a choice from the toolbar, the appropriate HTML for each element is automatically put into the source at the insertion point. Conversely, when you edit the HTML source, the appropriate graphic representation is displayed in the visual editor Web page view.

See the *Visual Page User's Guide* for more detailed information about the source editor.

Web page templates

When you install Visual Page, you can elect to have the installer place an extensive set of professionally-designed Web page templates and graphics on your disk drive. After you finish the tour, you can pick and choose amongst these and use them as a basis for your own Web pages. They include professional graphic elements like buttons and backgrounds for you to incorporate into your own Web pages. By using these, even novice users can quickly and easily create professional looking documents.

What's next

The next chapter of this book contains instructions for installing Visual Page. You must install the software before going ahead to the walkthrough of the Amazing Adventure Web site in [“Introducing the Amazing Adventures Web site”](#) on page 3-1. The construction of the Web Site begins in Chapter 4.

Installing Visual Page

This chapter contains:

- System requirements for Visual Page
- CD-ROM installation instructions

You install Visual Page using the CD-ROM player on your system and follow the instructions presented to you.

System requirements

To run the Visual Page application, you must meet the following platform requirements:

- IBM PC or 100% compatible
- CD-ROM player
- Windows 95 or Windows NT 4.0
- 486/66mhz or above
- 256 color VGA video or better is recommended
- 8 megabytes of RAM for Windows 95
- 12 megabytes of RAM for Windows NT
- 18 megabytes of hard drive space for full installation
- 3 megabytes of hard drive space for compact installation

CD-ROM Installation

When you use the typical installation option, the installer determines your platform and automatically installs the appropriate version of the application. You can also use the Custom installation option if you want to select only those options you want to install.

To perform the typical installation of Visual Page:

- 1 Insert the Visual Page CD-ROM into your computer's CD-ROM drive.
- 2 Double-click the Visual Page installer icon.
The Visual Page Installer splash screen appears.
It automatically launches the Setup application.
- 3 Read the instructions on the initial page and click **Next Accept**.
- 4 Read the Software License Agreement. If you accept the conditions for use of the software, click **Accept**.
- 5 Sun Microsystems Software License Agreement is also included because Visual Page uses Java.) If you accept the conditions for use of the software, click **Accept**.

The following screen displays installation options.

- 6 To proceed with the installation, choose one of the installation options. The preset options are the Typical, Compact, and Custom installations. When you choose Typical installation, the most common components of Visual Page are installed. If you select Compact installation, only the Visual Page program and all necessary files needed to run Visual Page are installed. If you want to determine exactly which pieces of the application to install choose the Custom installation.
- 7 On the same screen, choose Verify the application directory location where you want the application to reside, then click Next.
- 8 Verify the application folder on this screen and reset it if necessary, then click Next.

A screen with the current settings for placement of the application displays.
- 9 If you agree with the settings, click Install. Otherwise, you may click Back to reset the directory or Program folder, or click Cancel to stop the whole process.
- 10 If you click Install, a Setup progress indicator displays.

At the end of the installation a question displays.
- 11 To read the ReadMe file, which contains tips for use of the product and late-breaking information, click Yes.

To do a custom installation of Visual Page:

- 1 Follow steps 1-5 above.
- 2 For step four, choose Custom on the installation option screen.
- 3 Select the items you choose to install and click Next.
- 4 Continue with steps 6-9, above.

Introducing the Amazing Adventures Web site

In this chapter you will walk through a finished version of the Amazing Adventures Web site. You should go through this introduction to the Visual Page tour so you can become familiar with the Web pages which you are going to start building in the next chapter.

While walking through the Amazing Adventures Web pages you will:

- Look at the Amazing Adventures Web Site by using the Visual Page Project Manager
- View the animation
- Experience the workings of the Amazing Adventures Web site

What you need

Before you begin, you must install the Visual Page software, as described in “[Installing Visual Page](#)” on page 2-1. Make sure you installed the Java support folder for Visual Page or your applets will not work.

Next, you’ll need to create a project folder for the tour. The Project Wizard will help you through this step. It will contain the files you’ll need to construct the Web pages for the tour.

You’ll also find a finished version of the Amazing Adventures Web site, in the folder named Walkthrough, which you’ll use in this chapter to get acquainted with the Amazing Adventures Web pages.

Setting the scene

Imagine that you are an ambitious and creative employee of a travel agency, called Amazing Adventures Travel. You start “surfing the Web” and after seeing your competitors’ Web pages you convince your colleagues that it’s time your travel agency take advantage of the ability to reach more customers through the Web. You’re so enthusiastic about the possibilities that you receive the assignment to build the Web site.

In order to start work on a new Web site, you must typically accomplish the following:

- Identify your goals. First you get some idea of your competition’s Web pages, then you identify what you want the Amazing Adventures Web site to accomplish.
- Decide and outline the content. This step creates your roadmap.

Identifying goals for the Web site

You have an idea of what you want to see in a Web page after visiting the competitor’s sites on the Internet. This enables you to determine the following goals in preparation for building the Amazing Adventures site:

- The purpose of the Amazing Adventures Web site is to cultivate new potential customers.
- The tone of the writing should speak to an audience of educated, computer-savvy people.

- The information you plan to offer must be easy to find and view.
- The Web pages must attract and keep the attention of your visitors by being interactive and entertaining.

Deciding and outlining the general content

The Amazing Adventures travel agency decides that its Web site should be a kind of on-line travel brochure. The overall look should be one that is clean and bright. In general, the backgrounds are going to be white with the graphics done in a bright, tropical color scheme.

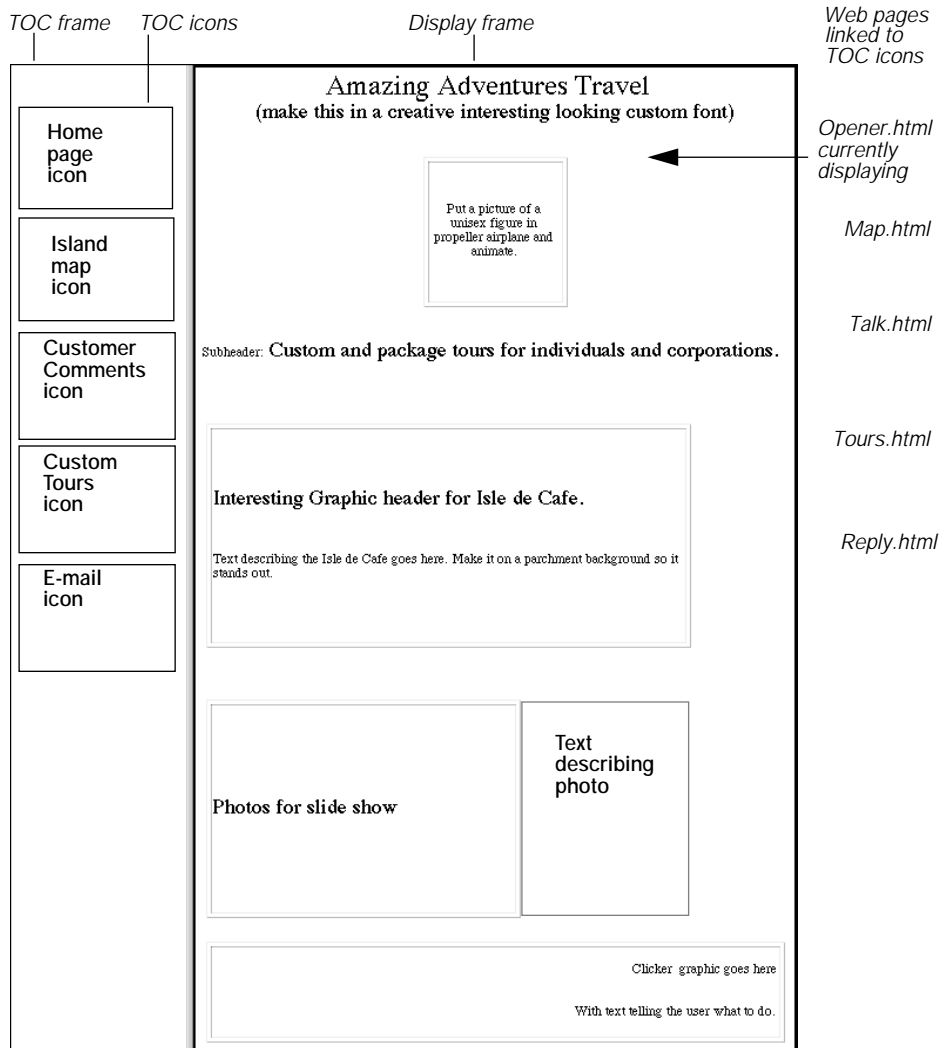
Since the most popular trip the agency offers is to the tropical island, “Isle de Cafe,” you want to showcase it as an example of what the Amazing Adventures agency has to offer. You plan to use the Web site to show off pictures of the island, describe its locations, and offer information about the different Isle de Cafe tours. The agency also wants you to use some of the favorable customer comments they’ve received from past trips.

While surfing the Web to check out the competition, you saw some Web pages that were divided so that part of the text and graphics always stayed in one area of the Web page. You plan to use this concept in the Amazing Adventures home page to make the site easy to navigate.

The thought is to divide the home page into a Table of Contents, which contains icons that are linked to the other Amazing Adventures Web pages. From now on we’ll call the Table of Contents the TOC.

The TOC usually appears to the left of the home page. Since it never moves, the TOC frame is a kind of landmark for your Web site visitors as they navigate through the information in the other Web pages in the Amazing Adventures Web site. To the right of the TOC, a larger frame will

display the Web pages which are linked to the icons in the TOC frame. A sketched outline of the home page looks like this:



In the next portion of the tour, you are going to use Visual Page to take a look at the finished version of the Amazing Adventures Web site.

Walking through the finished Web site

The Walkthrough folder is provided for you to use with this guided tour of the finished version of the Amazing Adventures Web site. In it you will see the Web pages as they appear after you finish building them. You'll begin building the Web pages in the next chapter.

One of the powerful and exciting features of Visual Page is the Project Manager. With the Project Manager, you can create a new Web site or import an existing one. For this tour, your going to create the project file for it and then import the Tour folder.

You're also going to use the Visual Page Project Manager to get acquainted with the Amazing Adventures Web site. As you'll find out later in the tour, the Project Manager is also useful for many drag-and-drop operations, from browsing the Web site files to adding links and graphics to Web pages.

To open the finished Web site, you must first open your Visual Page application, if it's not already open. One way to start the application, is to choose Programs, then Symantec Visual Page from the Start menu. if it's the first time you've opened Visual Page, a blank Web page displays. You don't need the new Web page now, so close it.

You will need to create the project folder and file for the tour so that you can open the Walkthrough folder. From the Project menu, choose New Project to create the Tour project folder and file (Tour.vpp).

Creating the Project folder and file for the Tour

The Project Wizard will guide you through creating the project folder and file for the Tour.

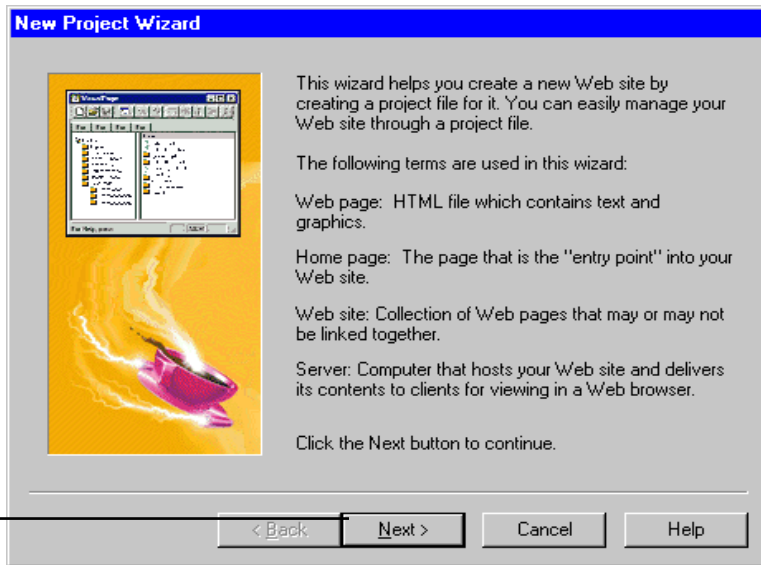
To create the project folder for the Tour:



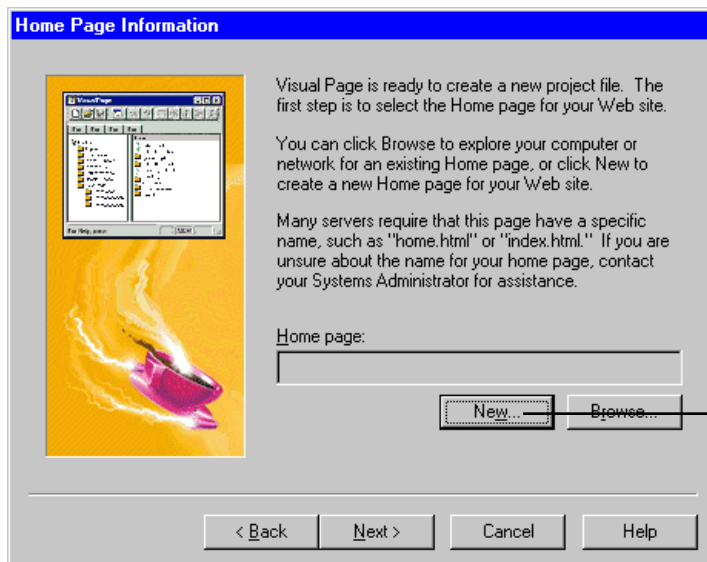
- 1 Click the Create New Project icon on the Visual Page toolbar.

The Project Wizard appears:

Click Next to advance through the panels of the Project Wizard

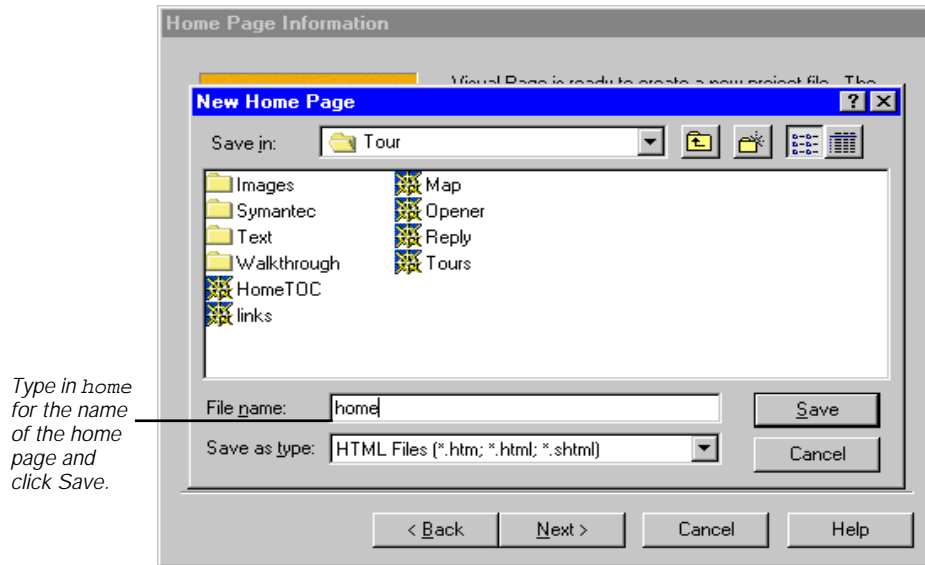


- 2 After reading the information on this panel, click Next to continue.
- 3 The Home Page Information panel asks you to create or locate a home page for your project. You'll be creating a new home page file for the Tour and adding to this file later, so click New.



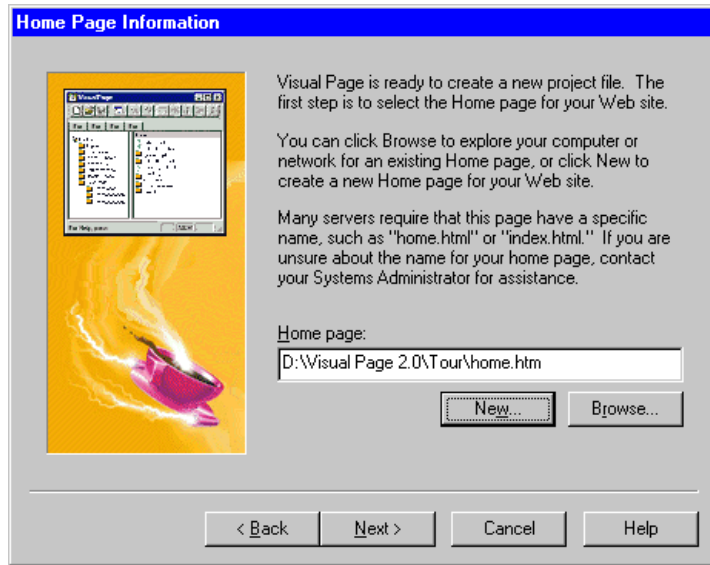
Click New to create the home page for the Tour.

The New Home Page dialog box displays:

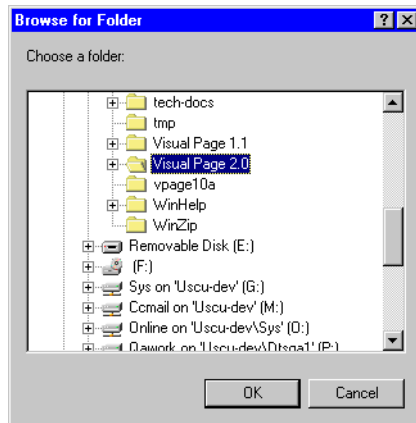


- 4 Navigate to the Tour Folder in the Visual Page 2.0 directory.
- 5 Type home in the File Name text box and click Save.

The New Home Page dialog box closes. The path and file name of the home page appear in the Home Page Information panel:

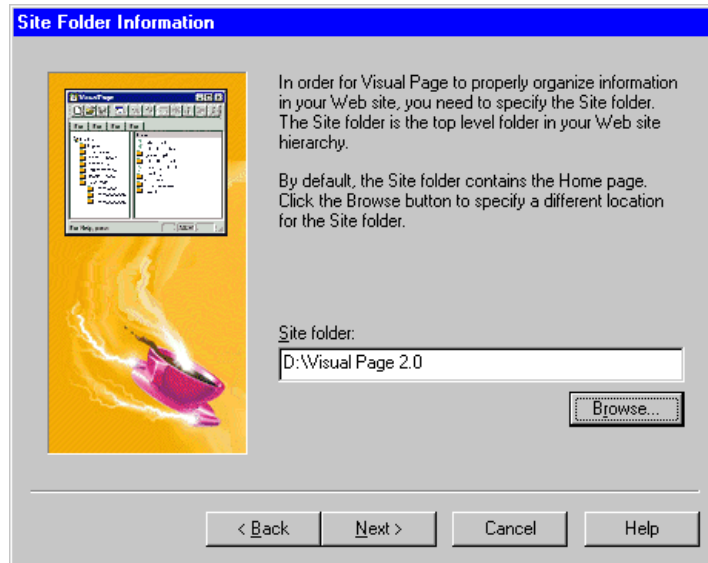


- 6 Click Next to continue to the Site Folder Information panel.
In the Site Folder Information panel, the path to the Tour Folder appears. In order to be able to complete the Tour, the Site Folder needs to be placed one directory above the Tour folder in the Visual Page folder.
- 7 Click Browse to open the Browse Folder window and navigate to the Visual Page Folder and select it:



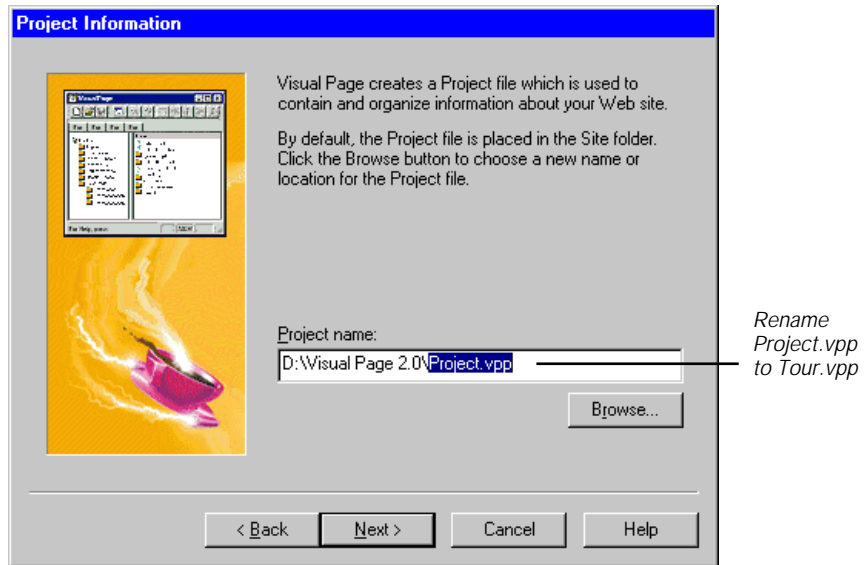
- 8 Click OK to close the Browse Folder window and to return to the Site Folder Information panel.

The Site Folder Information panel should look like this:



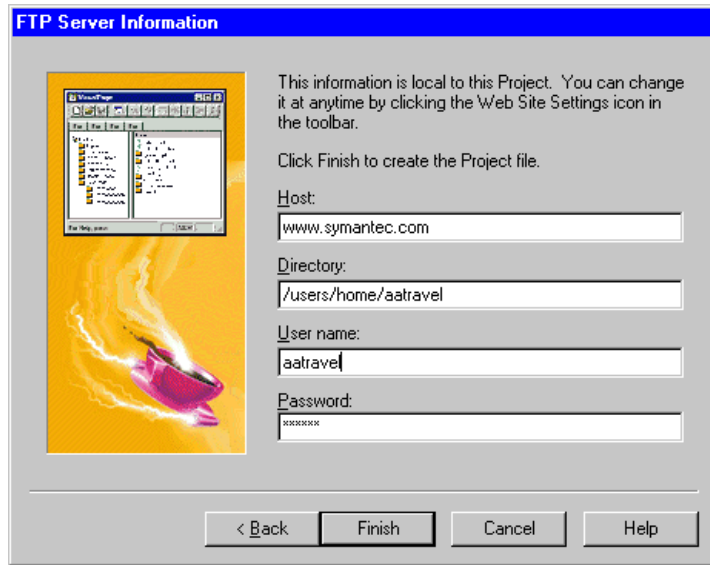
Note: the corresponding drive letter to where Visual Page is installed on your computer may be different than what is shown above.

- 9 Click Next to continue to the Project Information panel.:

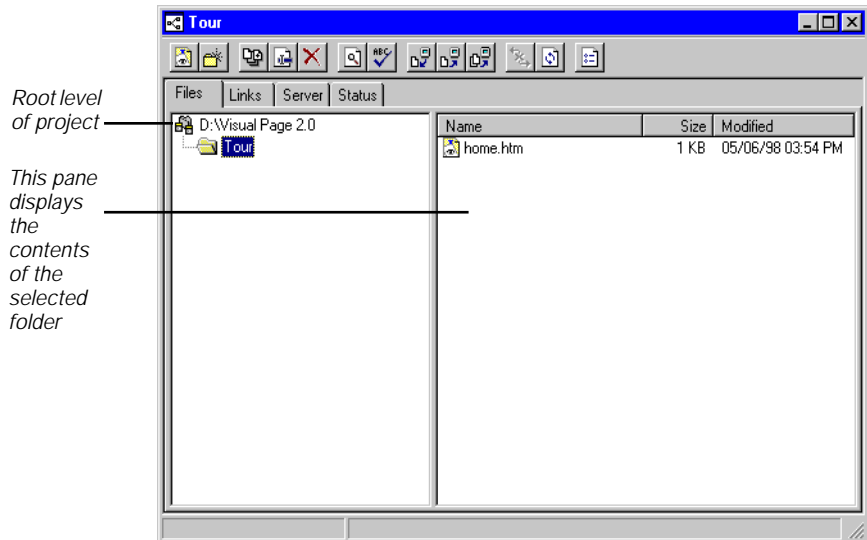


- By default, the Project Wizard will create a new Project File named **Project.vpp**. A Project File is the central file of a project that contains all the relational about the files in your project.
- 10 Rename the **Project.vpp** file to **Tour.vpp**.
 - 11 Click Next to continue to the FTP Server Information panel. This panel contains all the necessary information needed to publish the project. In this case, you can fill in your actual server information

to publish the Tour to your Web server and view it, or click Finish to generate the Project file and open the Project window.



12 When you click Finish, the Project window opens:



If you notice, there isn't very much information in the project window. You will need to import the rest of the Tour files in order to start viewing the finished files and creating the new ones.

Importing the Tour folder

You need to add the Tour folder to the new Tour Project.

To import the Tour folder:



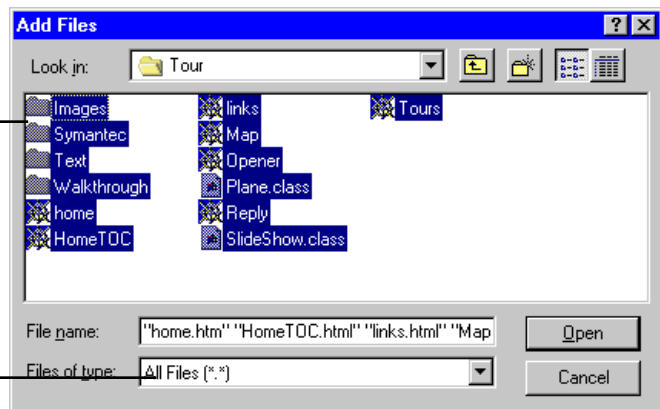
- 1 Click the Add Files to Project icon that is located in the Project Window toolbar.

The Add Files dialog box appears.

- 2 Change the Files of Type to All Files.
- 3 You need to select all the files and folders in the window. Select all the files and folders in this dialog box by clicking in the window and pressing Control + A, as shown below:

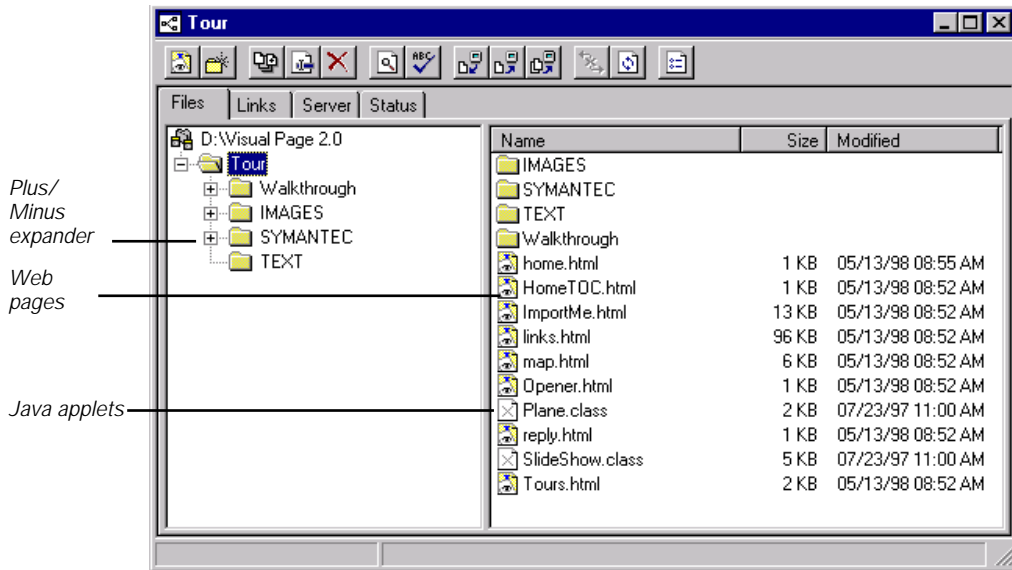
The Project Manager will add all files selected, as well as the folder that contains them.

Change the files type to All Files



- 4 Click Open to add all the files and folders to the Tour project.

The Tour Project window should look similar to the window below:



Notice that the controls in the Project window, which are labeled above, are similar to those in the Explorer. If you click once on a plus which is next to a folder, it becomes a minus and displays the contents of the folder. Similarly, if you click once on a plus which is next to a folder in the Project window, it shows the contents of that folder. If you click on a plus that is next to a Web page in a Project window, it becomes a minus.

Also notice the different kinds of files the project contains. These include the graphics, text, and multimedia files used in and linked to the different Web pages in the Amazing Adventures Web site.

At the root level of the Walkthrough folder in the Project window, notice the seven files with `.html` filename extensions. These are Web page files, which you can display in a Web browser or Visual Page.

You can also see two Java applet files at the root level of the Walkthrough folder. These are recognizable by their `.class` filename extensions. Java **applets** are like mini-applications that only work on a Web page. The folder, named Symantec, which is also at the root level of the Walkthrough folder, is full of Java code that is required by the Java applets. If you move the folder or remove files from it, the applets won't work.

The Images folder, which is also at the root level of the Walkthrough folder, contains the graphics for the Amazing Adventures Web site. To see the list of files and folders which are in the Images folder, click once on the plus next to the Images folder.

When you click the plus sign, it becomes a minus and you see many **GIF** (graphic interchange format) files with the filename extension **.gif**. The GIF file format is one of the kinds of graphic formats which you can use in Web pages. The other graphic format is called a JPEG file. See the *Visual Page User's Guide* for more information.

Now let's take a look at the contents of the Text folder. Click once on the plus sign that is next to the Text folder. The plus becomes a minus and you see the list of files the Text folder contains. You'll use these text files to add text to a Web page in the tour.

Look again at the contents of the Tour Project window. As with any Web site you intend to publish to an Internet server, the Amazing Adventures Site adheres to certain folder and file naming conventions required by the server software. As you look at the Project window again, notice the organization and naming rules to which this Web site adheres, including:

- Putting the graphics in an Images folder
- Keeping all folders and files together in a single project folder
- Naming the starting Web page, **home.html**

Finally, look at the Window menu items in the Project Manager. The name of the Project window which you opened is now displayed as a menu item. This makes it easy to find the window, when you're working with multiple open windows.

Previewing the opening page

In the following steps you are going to use the Preview mode of Visual Page to try out a working copy of the home page. In Preview mode you can see the Java applets working without leaving Visual Page. Also in Preview mode, you can click on links to see how they work. Since the links are live, you can get a feel for browsing the Web site, without leaving Visual Page.

To preview the contents of the Home page, double-click on the file icon for **home.html** in the Project Manager window. When you do this, the home page displays:

If you installed the Java support folder for Visual Page you'll be able to see the applets work by switching to Preview mode.



To switch to Preview mode, click on the Preview Page toolbar button, (shown at the left.) If you did not install the Java support folder, you can choose Preview in Browser from the View menu to see the applets working on the Web page from your Web browser.

When you choose Preview in Browser, the browser application which you have on your machine launches. The home page then displays with the applets running. The plane animation displays with the plane tilting back and forth, the propeller whirling and the pilot's scarf blowing in the wind.

The slide show applet displays its first photo, as shown in the following picture:

Table of Contents frame

Web page display frame showing the opening Web page: `Opener.htm`

Linked TOC icons

Home Page and Slide Show

Island Map and Information

Client Comments

Custom and Package Tours

E-mail Request Form

AMAZING Adventures TRAVEL

Custom and package tours for individuals and business

Applet running

ISLE DE CAFÉ ISLE DE CAFÉ is one of our favorite destinations. It has much to offer: mountainous views, interesting volcanic activity, ancient temples, tropical landscapes, and modern conveniences. And, of course, we can't resist the rich coffee for which the island is named – grown on the volcanic slopes and served at cafes throughout the island. Whether you are interested in sports, nature, history, European-style ambiance, gourmet dining, or simple relaxation, we offer the tour that helps you to best enjoy this glorious, unspoiled paradise.

Applet running

Pristine Bungbusti beaches are ideal for relaxing and for all kinds of water sports, including surfing, water skiing, and snorkeling.

Click here

To see some highlights, take a look at the slide show...
...click forward to start.

★★★★★ Amazing Adventures Travel rated four stars by *Travel Sophisticate*, *Outdoor Adventurer*, and *Academic Traveler* magazines.

Interacting with the home page

Now, try clicking on the right arrow of the slide show controller. Notice that the island photo and its description change. That's because the slide show applet is running now.

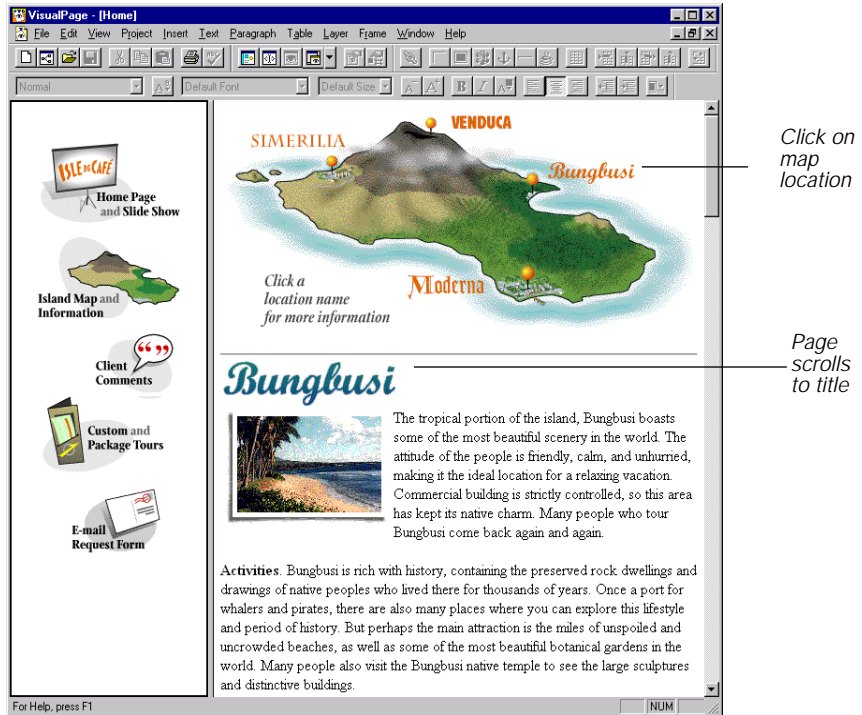
In addition to the slide show, you can interact with this Web page by clicking on one of the TOC icons to display another Web page. As you do this, notice that each of the Table of Contents icons is linked to a different Web page. Click on each TOC icon to display the following Web pages:

- Home page and Slide Show icon: displays an interesting opening page (**Opener.html**) which has animation, graphics, and an applet slide show
- Island Map and Information icon: links to the island map page (**Map.html**) which contains a map and information about its towns
- Client Comments icon: links to a client comments page (**Talk.html**) with quotes from previous happy customers
- Custom and Package Tours icon: displays a page listing the available Isle de Cafe tours (**Tours.html**)
- E-mail Request Form icon: links to an e-mail form (**Reply.html**) that electronically transmits customer information and requests

You've seen the opening page already: it's what displays next to the TOC when the home page first opens. It was also shown in the previous illustration. In the following sections, you will explore some of the other pages.

Using the island map page

With the home page open and Visual Page in Preview mode you can see the island map page in the display frame, by clicking on the Island Map and Information icon. When you do, you'll see the following display:



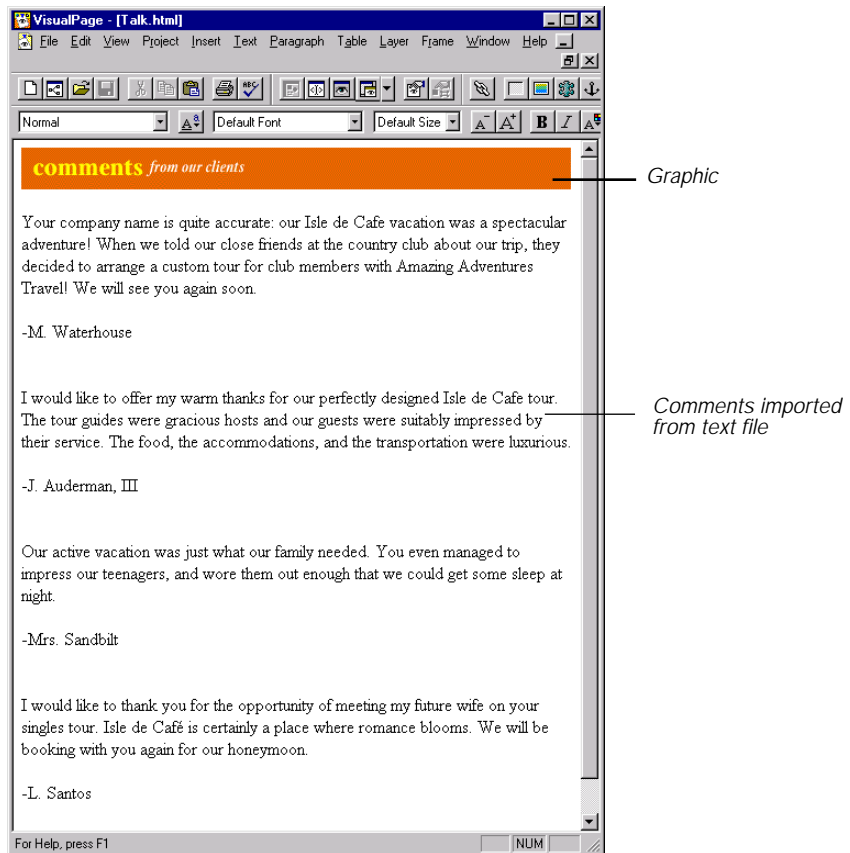
Notice that what you see in the display frame is only part of the Island map page. You can use the scroll bars, which Visual Page has automatically added, to see the rest of the page. Or, you can click on any location shown on the map, at the top of the Web page, to automatically scroll the Web page to the corresponding title.

To scroll the Web page automatically from the map, move the mouse over any location name on the island map. When you do this, notice that the arrow pointer changes to a pointing finger, indicating that the mouse is over a link. Go ahead and click the mouse. The Web page scrolls to the title that matches the location name. You can try this again with any of the locations on the map. Later in the tour you are going to create the links that make the map page function like this.

When you're finished exploring this Web page, close the home page and continue on to see the Client Comments page.

Looking at the Client Comments Web page

The Client Comments Web page is a simple page, containing one graphic and the contents of a text file. Since the Web page itself is simple, this is a good opportunity to have you look at the HTML Source Editor. This is mainly for your information; you don't actually use the Source Editor anywhere in the Visual Page Tour. To view the Client Comments Web page by itself, double-click on `talk.html` in the Project window. The Client Comments Web page displays:



There's nothing to interact with on this Web page, so let's look at the source view. To see the Client Comments source view, click the Edit Source toolbar button (shown at left).

The Source Editor displays:



```
<!DOCTYPE HTML PUBLIC "-//W3C//DTD HTML 3.2//EN">
<HTML>

<HEAD>
  <META NAME="GENERATOR" Content="Visual Page 1.0">
  <META HTTP-EQUIV="Content-Type" CONTENT="text/html;CHARSET=iso-8859-1">
  <TITLE>Customer comments</TITLE>
</HEAD>

<BODY BGCOLOR="#FFFFFF">

<P><IMG SRC="images/Comments.gif" WIDTH="500" HEIGHT="38" ALIGN="BOTTOM" BORDER="0"><BR>
<BR>
Your company name is quite accurate: our Isle de Cafe vacation was a spectacular
adventure! When we told our close friends at the country club about our trip, they
decided to arrange a custom tour for club members with Amazing Adventures Travell
We will see you again soon.<BR>
<BR>
-M. Waterhouse<BR>
<BR>
```

The source is the part of the text which is made up of HTML tags, which you can identify by the opening and closing brackets (< >) around them:

You can easily see the relationship between the Visual Editor and the Source Editor by trying a little experiment. Switch to the Visual Editor by clicking on it. Keep the Source Editor open and arrange the two windows so you can see both.

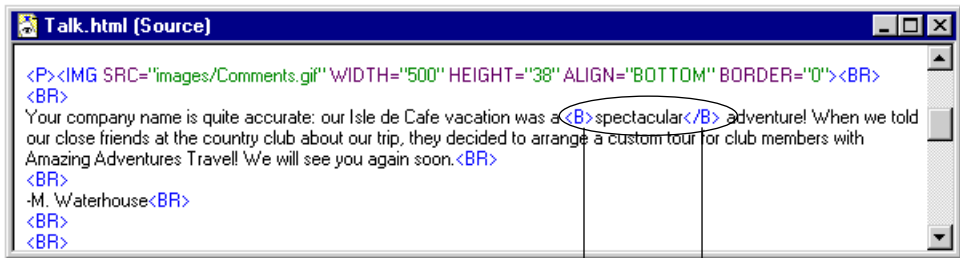
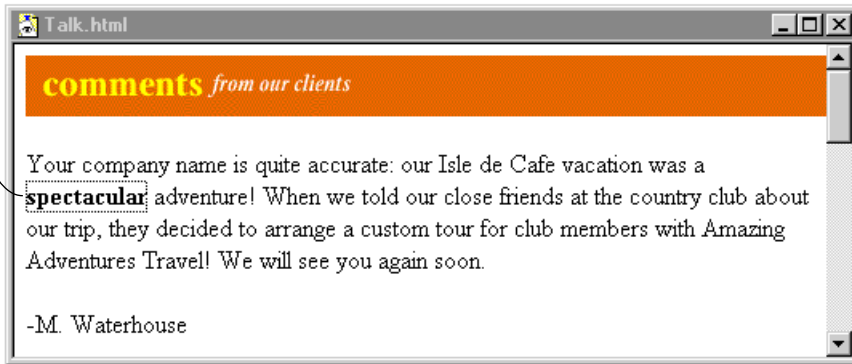


In the Visual Editor, double-click on the word “spectacular” in the first testimonial paragraph, to select it. While spectacular is selected, click on the Bold toolbar button (shown at left.) The word “spectacular” now displays in bold on the Web page.

Watch closely as you switch to the Source Editor by clicking anywhere in it. The bold tags appear in the Source Editor as soon as you activate the

window! You should be able to spot them easily with a color monitor. The following picture shows the two views:

First select the word and make it Bold



New tags for bold text appear when you switch to source view

The same experiment also works in reverse. In other words, you can insert the tags directly into the HTML source text, save the changes, and then switch to the Visual Editor to see the changes in the visual display of the Web page.

When you're finished, make sure to close both views of the Customer Comments Web page — without saving changes. For more information about the Source Editor, see the *Visual Page User's Guide*.

In the following section, you will browse the final two Amazing Adventures Web pages.

Browsing the Custom Tours and e-mail Web pages

Since trips are the main business of the Amazing Adventures Travel Agency, there has to be a Web page that presents the trips. You are going to do this in a table format on the Custom Tours Web page — so that the specific information for each trip is easy to see. See “Creating the Package Trips table” on page 4-18.

To open the Custom and Package Tours Web page, double-click on **Tours.html** in the Project Manager window. Notice that the Custom Tours Web page, which is shown in the following illustration, also contains a link to the e-mail form Web page:

The screenshot shows a web browser window titled "Tours.html". The page content includes a green textured header with the text "custom and package tours". Below the header is a paragraph of text: "We offer custom tours and a limited number of exceptional preplanned package tours. To inquire about our tours, send us e-mail and specify whether you are interested in our custom or preplanned tours. We will send you a list of fees, and for custom tours, a survey of your interests." A line labeled "Linked text" points to the underlined text "send us e-mail". Below the paragraph is a table titled "upcoming Isle de Café package tours". A line labeled "Table" points to the table.

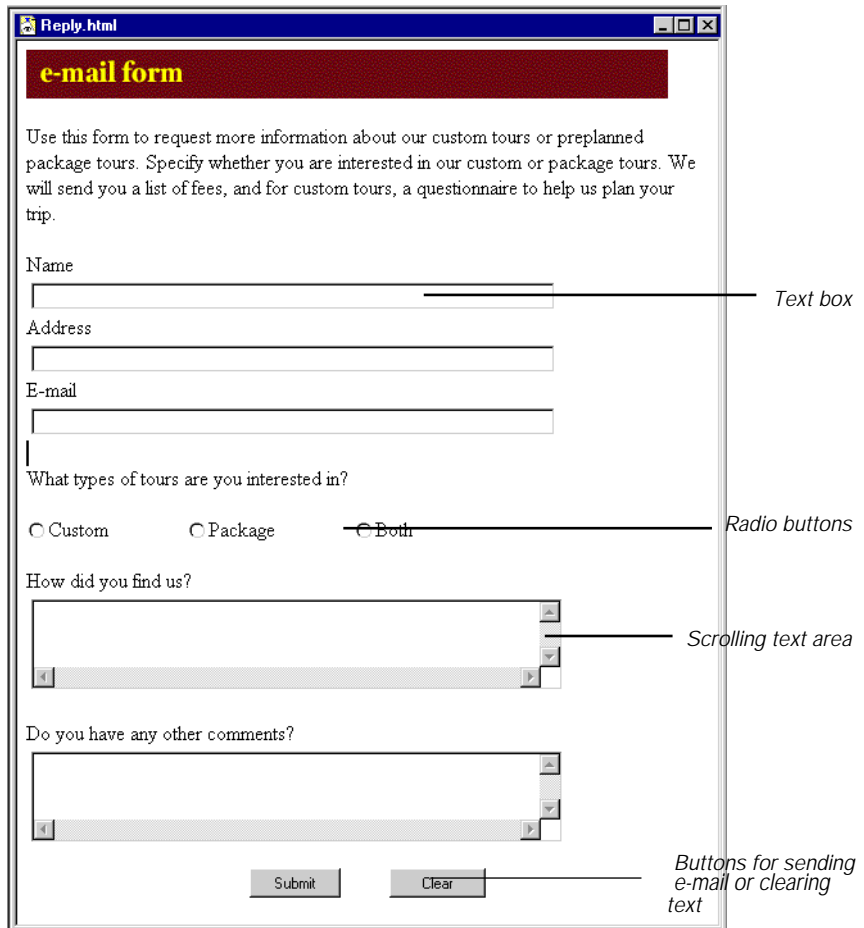
upcoming Isle de Café package tours			
Isle de Café: A Gastronomic Adventure	12 days	\$4500	Dine on the creations of top chefs and learn their culinary secrets. Learn to prepare Isle de Café ethnic specialties.
Adventurous Singles Tour	14 days	\$3500	Meet others with a variety of fun activities designed to maximize your enjoyment of the Isle de Café paradise. Everyone becomes friendlier as the stresses fade at Isle de Café.
Active Adults Tour	7 days	\$3500	Scuba dive, snorkel, and surf in the turquoise waters of Bungbusi, climb a volcano, hike in tropical rainforests to the edge of a waterfall, white-water raft on a Moderna river, pack a llama for a ride to Simerilia temples, and much more. For those who can't take Isle de Café sitting down.
	14 days	\$6500	

To browse the e-mail page:



- Click the Preview Page toolbar button to Preview mode
- Then click on the underlined text “send us e-mail”

The e-mail form displays. It is shown in the following picture, (minus a few text boxes so some of each kind of user interface element shows):



The text boxes and buttons on this page are known as **form** elements. These are labelled in the above picture. You are going to build the e-mail form later in the tour.

What's next

In this introduction you saw many of the Web page features you'll be using to build a Web site in the Visual Page tour. These included:

- A Home page with two frames
- The Client Comments Web page, with its imported text and title graphic
- A clickable map on the Isle de Cafe Web page
- A working Java applet on the opening page
- The Custom Tours table
- An e-mail form

The procedures for building these Web pages make up most of the rest of this book. By the time you have finished the tour, you will have created the working Web site you just previewed.

To continue with the Tour, close all of the windows that you opened in this part of the tour, and close the Walkthrough folder in the Project Manager window.

Note: If you own a copy of Symantec's Visual Cafe, you can build the Java applets used in this tour by following the Visual Cafe tour. See *Getting Started with Visual Cafe*.

Building the Amazing Adventure Web pages

In this chapter you will construct several Web pages for the Amazing Adventures Web site. While doing this, you'll learn to:

- Create a new Web page
- Add it to the Tour Project
- Add graphics and text to the new Web page
- Use a table to format the information for the Custom Tours
- Create an e-mail reply form
- Layout pictures with text that describes the Isle de Cafe

In doing these things, you will build the Client Comments Web page from scratch and complete most of three others, including: the Custom Tours, E-mail Reply Form, and Island Map Web pages.

In this part of the Tour, you will use the files in the Project window and not the files in the Walkthrough folder.

Creating the Client Comments page

Clients have been signing and writing comments in a visitor's log during previous Isle de Cafe tours. Your agency wants to make the favorable comments available on the Web site for visitors to read.

You decide to make the design of this page plain, like an actual visitor's log, so the focus is on the text. While authoring this Web page you are going to:

- Create a new Web page and set its background color
- Open the Tour Project and add the new Web Page to it
- Import the customer comments from a text file
- Add a title graphic

Note: This chapter assumes you know how to open a Visual Page Project window. If you need instructions, see [“Creating the Project folder and file for the Tour” on page 3-5](#).

Creating a new Web page

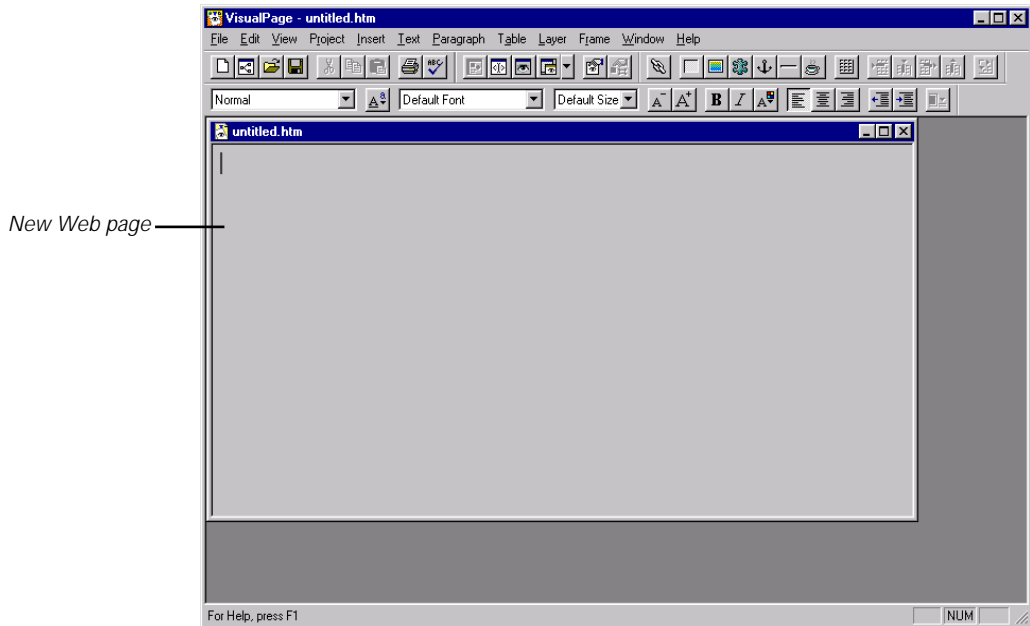
To preserve a guest book feel to the Client Comments Web page, you want to keep the layout simple. To achieve this you decide to place the comment text on a plain white background.

In the following procedure you open a new Web page and set its background color to white.

To create the blank Client Comments page:

- 1 Open the Visual Page application.

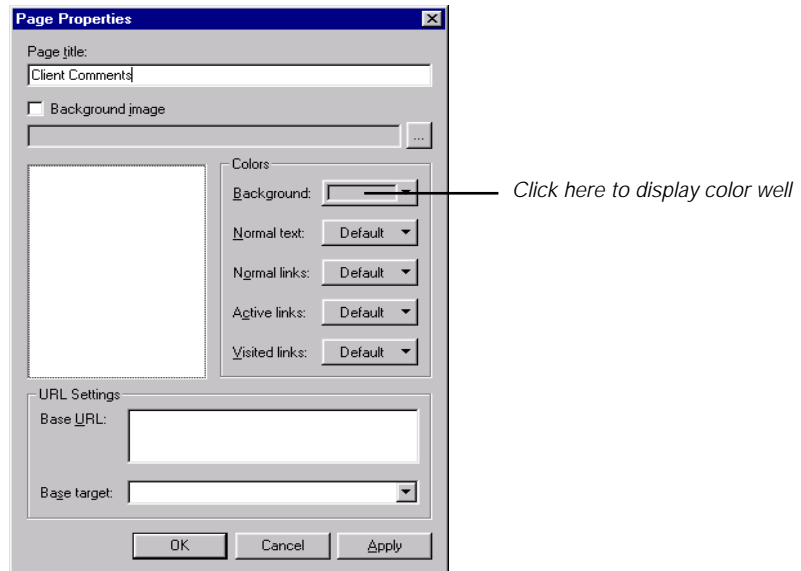
An untitled Web page displays. It looks similar to the following picture:



Note: If the new Web page is closed for any reason, you can open another one by choosing New from the File menu.

- 2 From the Edit menu, choose Properties, then Page.

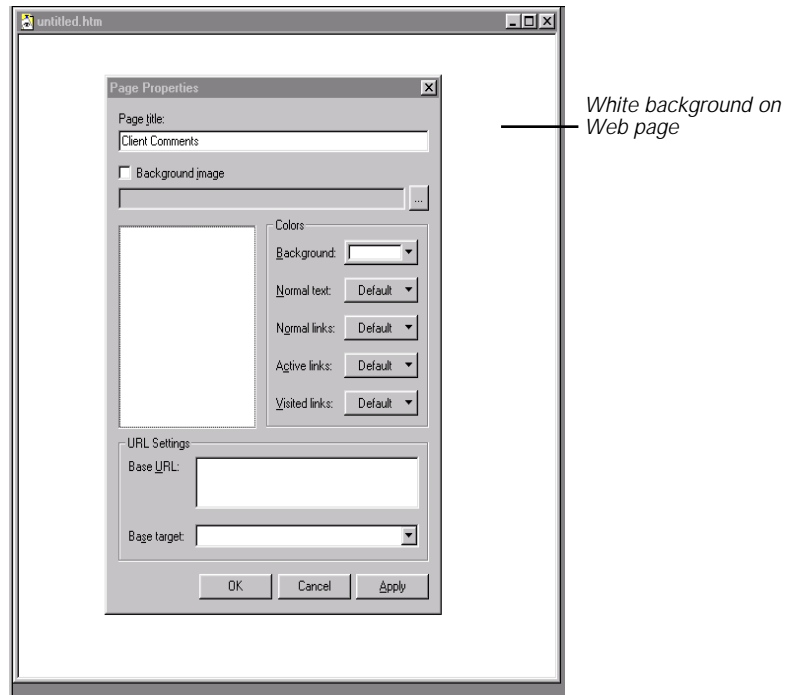
The Page Properties dialog box displays, as shown in the following illustration:



- 3 Type “Client Comments” in the Page title field.

This title is used in the HTML source. It also displays in the title bar of the Web page when it is displayed by a Web browser.

- 4 In the same dialog box, click the Background button of the Colors group to display the drop-down color well.
- 5 When the color well displays, click its white square.
- 6 Click Apply and the white background displays on the Web page:



- 7 Click OK to close the dialog box.
- 8 Choose Save As from the File menu.
- 9 Use the Save As dialog box to save your file as **talk.html** at the root level of the Tour folder.

After the file is saved, **talk.html** displays in the title bar of the Web page. Don't close the **talk.html**, though.

Next, you'll need to add open the Tour Project and add **talk.html** to the Tour project.

Adding the new Web page to the Tour folder

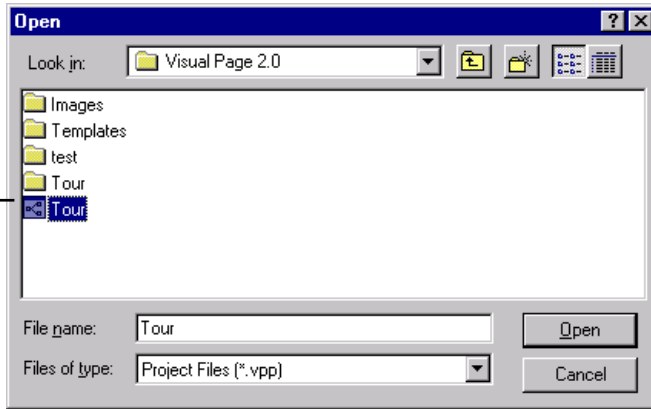
You must add the new Web page (**talk.html**) to the Tour Project to drag and drop other items into it.

To add talk.html to the Tour project:

- 1 Open the Tour project by selecting Open Project from the Project file menu.

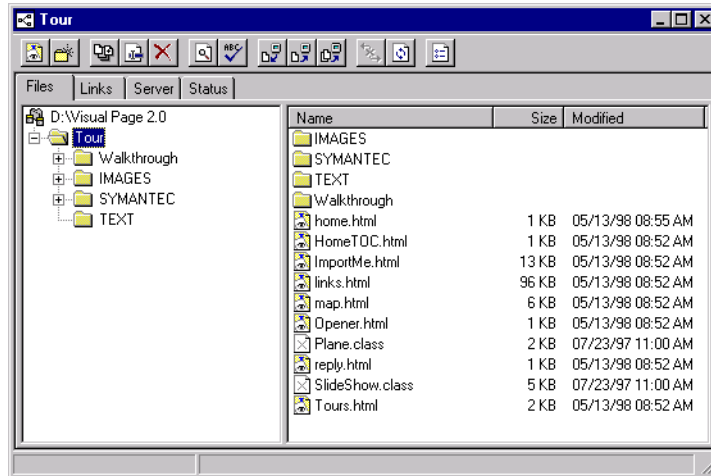
The Open Project dialog box appears:

Double-click the Tour project file to open the Tour project



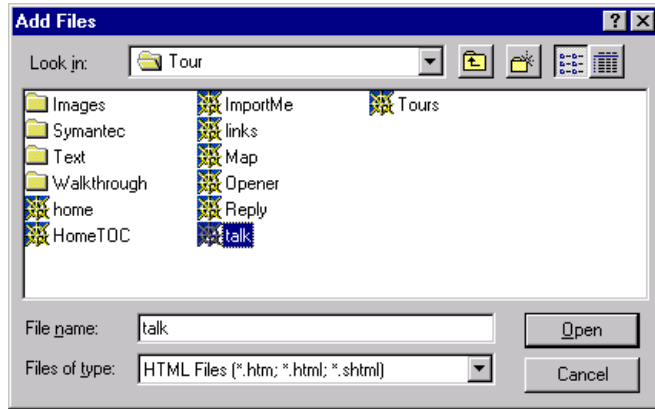
- 2 Navigate to the Visual Page directory on your computer and select the Tour project file.
- 3 Click Open to open the Tour project.

The Tour Project Window displays:



- 4 Click the Add Files icon in the Project Window toolbar.

The Add Files dialog box appears:



- 5 Select `talk.html` and click open.

The file is added to the Tour project.

Adding the client comment text

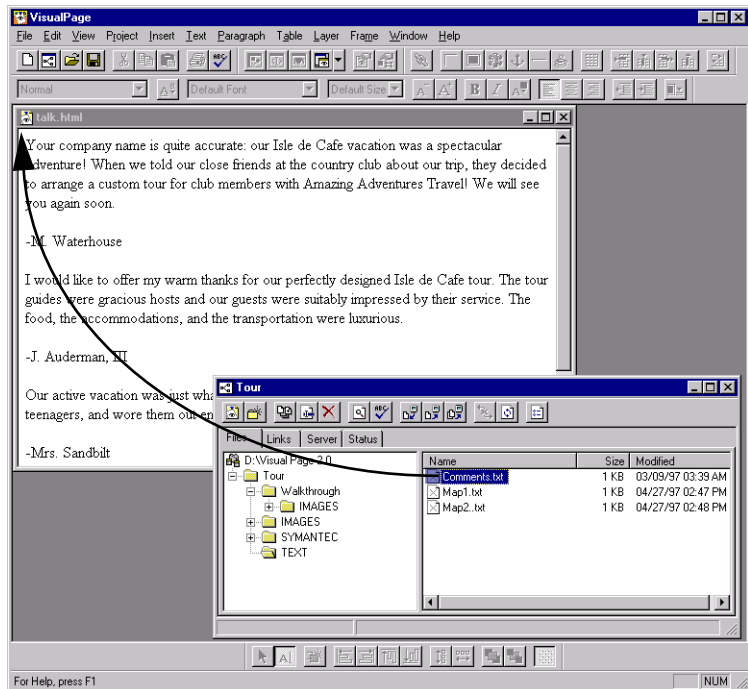
Since the client comments from previous travelers are in a text file, you are going to import that text rather than retype it into the Web page.

To add the client comments to the Web page:

- 1 Position the Tour Project window to the side of the Web page, as shown in the picture below. The `talk.html` Web page should be already open and displaying. If it's not, you can double-click it in the Project window to open it.
- 2 In the Project window, open the Text folder by clicking on the plus next to the folder.
- 3 Drag `Comments.txt` from the Project window and drop it on the Web page.

The text instantly displays and your desktop looks similar to this:

Drag and drop the text file on the Web page



Adding the Client Comments title graphic

The finishing touch to this page is the colorful title graphic. In the following steps you use the Project window to drag and drop the title into place on the Web page.

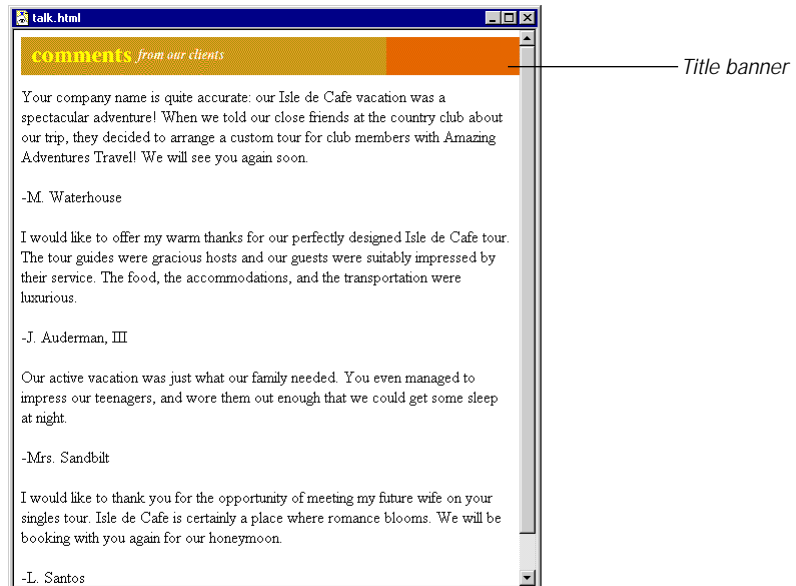
To insert the Client Comments graphic:

- 1 Using the Project window, locate **Comments.gif** in the **Images** folder. To do this, click once on the plus next to the **Images** folder.

The plus becomes a minus and the files in the images folder display.

- 2 Place the insertion point on a blank line before the first quote in **talk.html**.
- 3 Drag **Comments.gif** from the Project window and drop it on the Web page.

The following picture shows the finished Client Comments Web page, after you add the title banner:



- 4 Make sure to save your work and close this Web page file.

Creating the island photo layout

A map of the Isle de Cafe makes an interesting illustration for the Web page that describes each of its locations. You devote a whole Web page — the Isle de Cafe Web page — to information about the different Isle de Cafe towns.

This Web page is going to be fairly long because there are four locations on the map which you want to describe in some detail. To make the length of the page more manageable, you decide to make the locations on the map respond to a mouse click that automatically scrolls the page to the appropriate description.

In order to finish the layout of the Isle de Cafe Web page, you are going to:

- Left-justify a photo so that text flows around its right side
- Add another photo and resize it to fit the Web page
- Right-justify the newly added photo so text flows around the left of the image

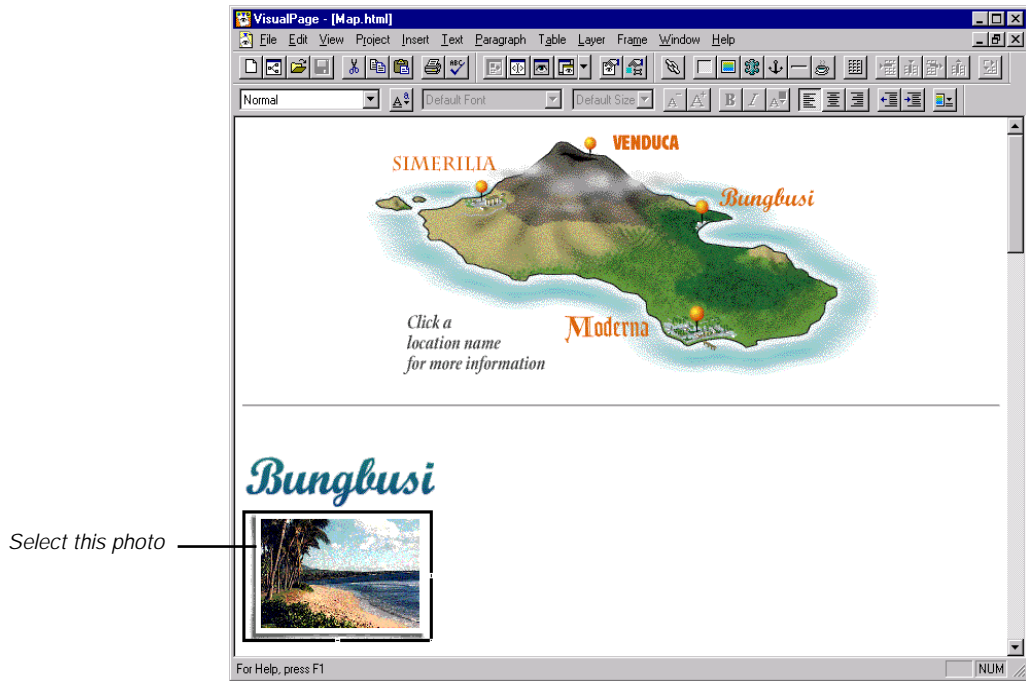
Flowing text around a photo

As in a traditional travel brochure, you are going to use pictures to illustrate different places on the Isle de Cafe. To make the layout look professional, the text needs to flow around each photo. In the following steps you'll add the text that describes parts of the island around an island photo.

To flow descriptive text around the right side of the first photo:

- 1 From the Tour Project window, open the **Map.html** Web page. (It's at the root level of the Tour folder.)
- 2 Select the photo, directly under the Bungbusi heading, by clicking once on it.

The selected photo displays with a dark outline and handles, as shown in the following picture:

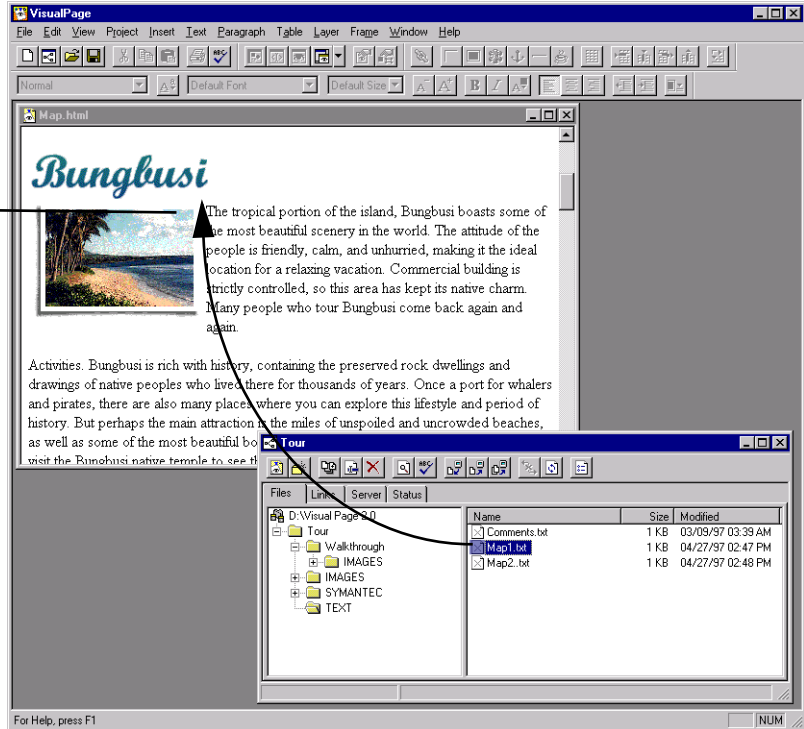


Select this photo



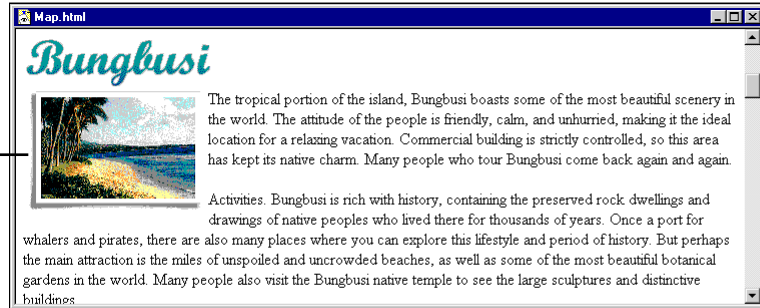
- 3 From the toolbar, select the Object Alignment icon.
This picture should have Left Object Alignment checked.
- 4 Place the Project window in front of the Web page.
- 5 Drag `map1.txt` from the Text folder of the Project window to the top right side of the Bungbusi photograph, as shown in the following picture:

Drop text file here



When you drop `map1.txt` on the Web page, the text instantly flows around the right side of the picture, and the left aligned island photo displays at the left of the paragraph:

Left-aligned graphic
with text



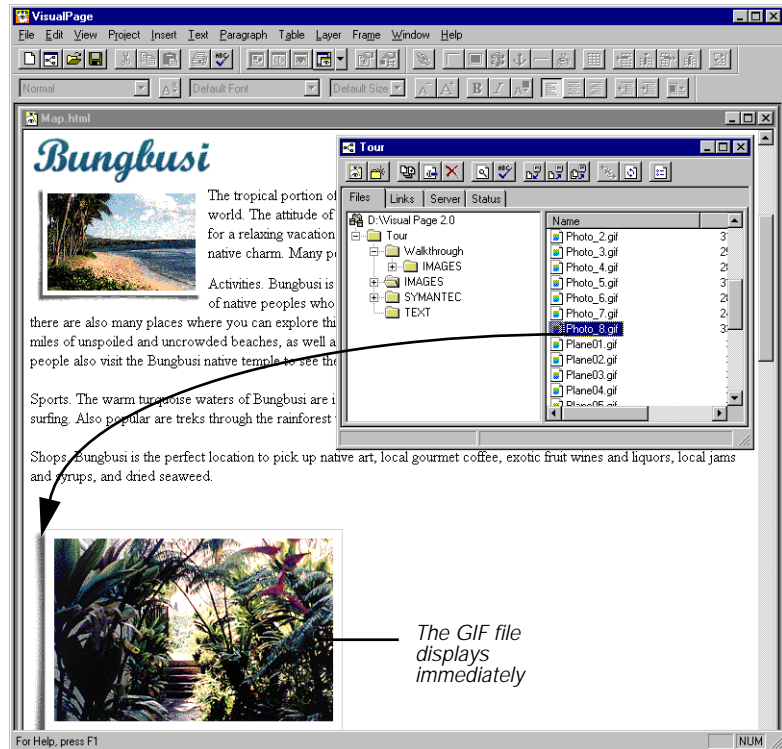
Reducing the Bungbusi photo

On the Isle de Cafe Web page you are really reusing the photos from the slide-show. That way you only need one copy of the GIF photo files, which are stored in the Images folder of the Web site. They are the correct size for the slide show but too large for this Web page. (For more information about the slide show see [“Previewing the opening page” on page 3-14](#) and [“Adding the interactive slide show” on page 5-6.](#)) So, you need to reduce the photo sizes when you use them on the Isle de Cafe Web page. The following steps help you resize a photo to add to the Bungbusi section.

To add the Bungbusi photo:

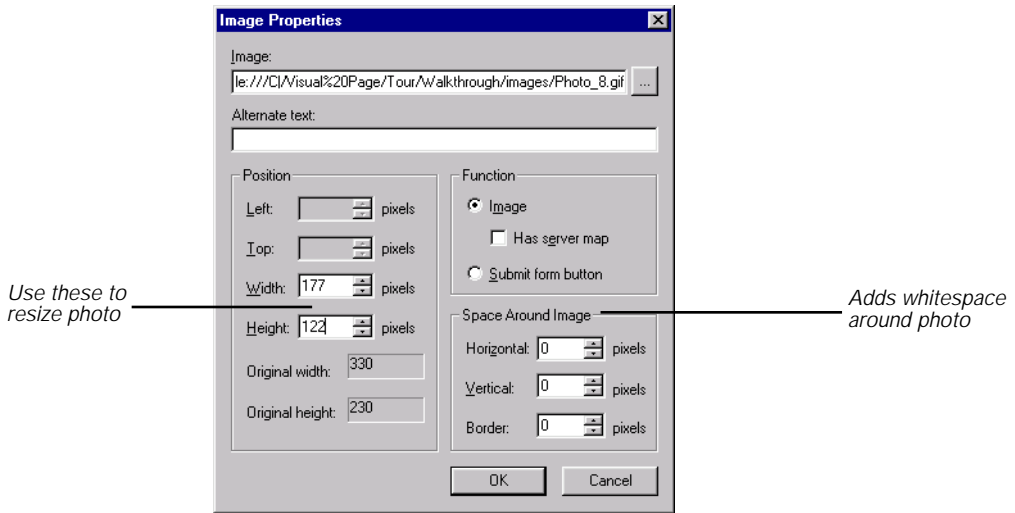
- 1 Drag `Photo_8.gif` from the Images folder in the Project window and drop it below the text you added in the previous procedure.

The photo should display as shown in the following illustration:



- 2 Double-click on the newly inserted photo.
An Image Properties dialog box opens.
- 3 Resize the image to the size of the other photos by setting its Width to 175 and its Height to 122.
- 4 Add white space around the photo by setting Horizontal Space Around Image to 5.

The settings should look like this



- 5 Press Enter or click OK to close the dialog box.
The picture instantly shrinks to the correct size.
- 6 It's a good idea to occasionally save your changes, so do that now, if you haven't already.

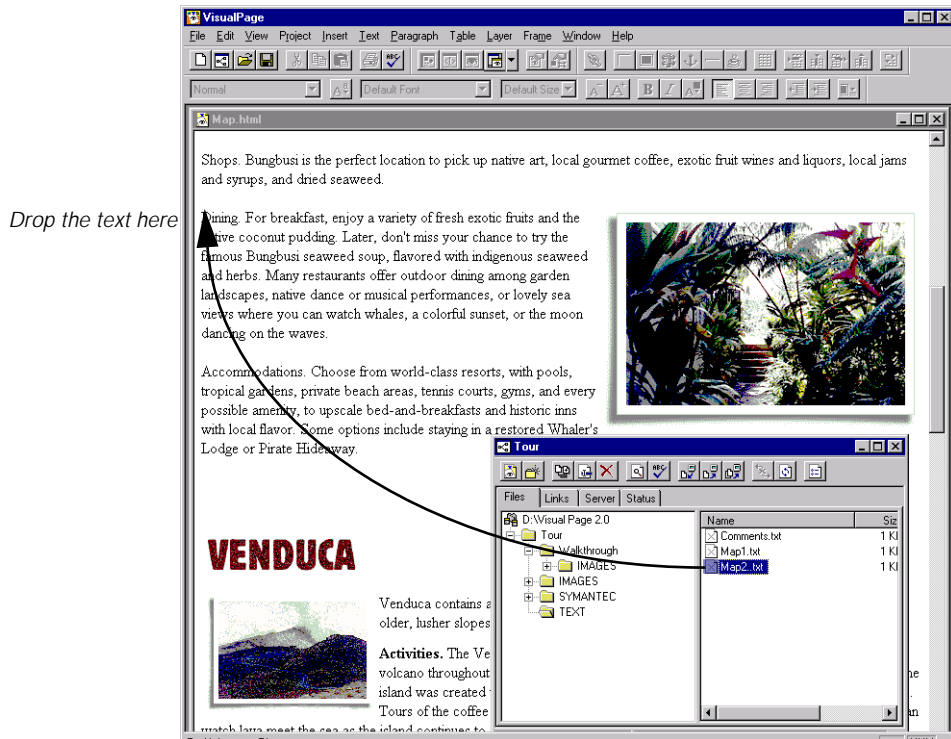
Setting a photo to the right of the text

To vary the layout some, you want to have pictures on alternating sides of the text. Each island town has two photos — the first displays to the left of the text, so the second needs to display to the right of the text.

To place the second photo on the right side of the Web page:

- 1 Select the photo that you just placed on the map page, (it's the second photograph from the top) by clicking once on it.
It displays with an outline and dark handles.
- 2 From the main toolbar, select Object Alignment, then Right.
The picture moves to the right of the Web page.
- 3 Drag `map2.txt` from the Project window, it's in the Text folder, and drop it at the top left side of the photograph.

When you do so, the text wraps around the left side of the photo:



- 4 Select any empty lines left between the text you just added and the Venduca heading and delete them by pressing the delete key.

Note: Your pages may look different depending on the resolution settings of your monitor and video card.

The Bungbusi section of the Isle de Cafe Web page now looks like this:

Bungbusi




The tropical portion of the island, Bungbusi boasts some of the most beautiful scenery in the world. The attitude of the people is friendly, calm, and unhurried, making it the ideal location for a relaxing vacation. Commercial building is strictly controlled, so this area has kept its native charm. Many people who tour Bungbusi come back again and again.

Activities. Bungbusi is rich with history, containing the preserved rock dwellings and drawings of native peoples who lived there for thousands of years. Once a port for whalers and pirates, there are also many places where you can explore this lifestyle and period of history. But perhaps the main attraction is the miles of unspoiled and uncrowded beaches, as well as some of the most beautiful botanical gardens in the world. Many people also visit the Bungbusi native temple to see the large sculptures and distinctive buildings.

Sports. The warm turquoise waters of Bungbusi are ideal for water sports, including diving, snorkeling, water skiing, and surfing. Also popular are treks through the rainforest to view the colorful, fragrant flowers and magnificent waterfalls.

Shops. Bungbusi is the perfect location to pick up native art, local gourmet coffee, exotic fruit wines and liquors, local jams and syrups, and dried seaweed.

Dining. For breakfast, enjoy a variety of fresh exotic fruits and the native coconut pudding. Later, don't miss your chance to try the famous Bungbusi seaweed soup, flavored with indigenous seaweed and herbs. Many restaurants offer outdoor dining among garden landscapes, native dance or musical performances, or lovely sea views where you can watch whales, a colorful sunset, or the moon dancing on the waves.



Accommodations. Choose from world-class resorts, with pools, tropical gardens, private beach areas, tennis courts, gyms, and every possible amenity, to upscale bed-and-breakfasts and historic inns with local flavor. Some options include staying in a restored Whaler's Lodge or Pirate Hideaway.

Left-aligned image

Right-aligned image

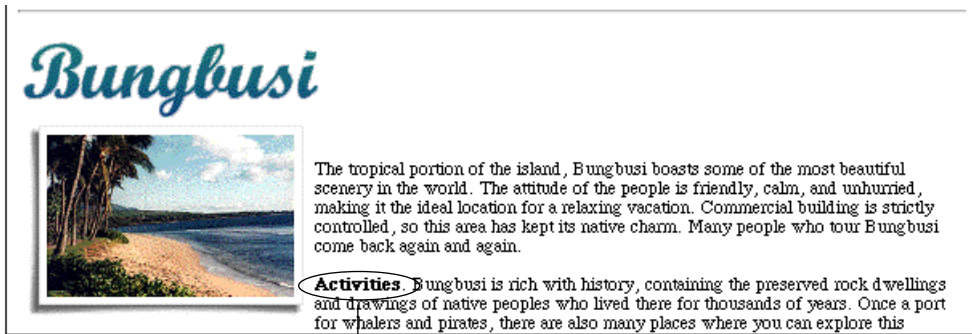
Styling the paragraph titles

After placing the descriptions next to the island photos, you want to create easily seen titles for the different Bungbusi sections. Since the traditional HTML heading styles require a title to appear on a separate line, you decide to use a bold style word at the beginning of a line. This fits in better and still draws attention to the content.

To make the one word headers bold:

- 1 Select the word “Activities” at the beginning of the second paragraph of the Bungbusi text.
- 2 While the word is still selected, choose Bold from the Style menu.

Click outside the word to deselect it. It is now displaying in bold style text:



Bold run-in title

- 3 Repeat steps 1-2 for the title words — Sports, Shops, Dining, and Accommodations — of the next four paragraphs on the Web page.
- 4 Make sure to save your work and close the page.

This Web page should look better now than when you started. We'll finish it in the next chapter by making the map clickable. In the next section you'll do some formatting with a different Web page tool — the table.

Creating the Package Trips table

A prototype version of the Custom Tours Web page already exists but you decide to refine it. It needs to be easier for the busy professionals this Web site targets to quickly scan the text and find the information they need.

To make the different kinds of information stand out, you are going to split up the paragraphs of text and put them into a table. Each tour occupies a single row in the table, with different kinds of information in each column. Starting with the first column on the left, they are going to contain:

- Trip titles
- Length of the trips
- Prices of the trips

- Trip descriptions

Some of the table features you want to use in the Package Tours table are labelled in the following illustration:

Graphic in table cell A table cell that spans four columns Background color in a table cell

upcoming Isle de Café package tours			
Isle de Café: A Gastronomic Adventure	12 days	\$4500	Dine on the creations of top chefs and learn their culinary secrets. Learn to prepare Isle de Café ethnic specialties.
Adventurous Singles Tour	14 days	\$3500	Meet others with a variety of fun activities designed to maximize your enjoyment of the Isle de Café paradise. Everyone becomes friendlier as the stresses fade at Isle de Café.
Active Adults Tour	7 days	\$3500	Scuba dive, snorkel, and surf in the turquoise waters of Bungbusi, climb a volcano, hike in tropical rainforests to the edge of a waterfall, white-water raft on a Moderna river, pack a llama for a ride to Simerilia temples, and much more. For those who can't take Isle de Café sitting down.
	14 days	\$6500	

A cell that spans two rows A cell that spans two rows

Adding the table

The first step (after opening the Web page you're going to reformat) is to generate the new table into which you're moving the trip descriptions.

To begin working on the package trips table:

- 1 Open the file **Tours.html**, from the Tour Project window.

The Web page displays as shown in this picture:

Place insertion
point here



- 2 Click once to place the insertion point on a blank line after the first paragraph of text on the page.
- 3 Click the Insert Table button on the toolbar. The New Table dialog box appears.
- 4 In the Table Settings dialog box, set Number of rows to 4 and number of columns to 4.
- 5 In the same dialog box, choose Width from Table Dimensions by typing 500 in the Width box and using the drop-down menu to change the setting to pixels, to a static 500 pixels. This makes the table stay the same width as the title graphic, despite the width of the Web page display.
- 6 Click OK and a new table with 4 rows and 4 columns displays, as shown in the following picture:



- 7 If you need to adjust the table for any reason, click on the table and drag any of the handles.

Widening the top cell of the table

You're going to reuse the graphic for "upcoming Isle de Cafe trip packages" as the title for the table. Since this graphic is as wide as the Web page, a table cell in the top row needs to span the entire table. In the following steps you are going to widen the top table cell so it can accept the title banner.

To make the top cell span all four columns:

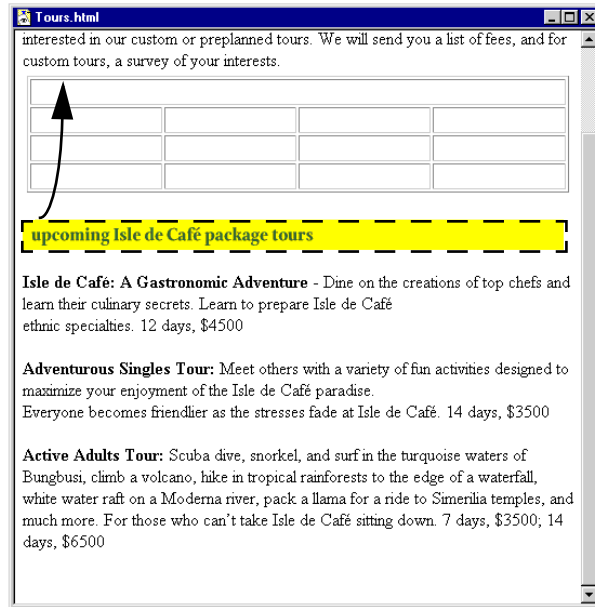
- 1 Place the insertion point in the top left table cell.
- 2 Choose Edit, Properties, then Table Properties.
- 3 When the Table Properties dialog box displays, click on the Cells tab.
In the Cell Size group, change Span across columns to 4.
- 4 The settings affecting the current table cells display. Close the dialog box and save your changes.

Inserting the graphic and changing the cell color

The title can be moved into the top cell of the table by simply dragging it from its old location on the Web page to its new place in the table. However, depending on how wide your table becomes as a Web page becomes wider, the Custom Tours graphic is smaller than the table cell so you need to hide its boundary by adjusting the color of the cell to match the graphic.

To place the graphic and adjust the cell color to match:

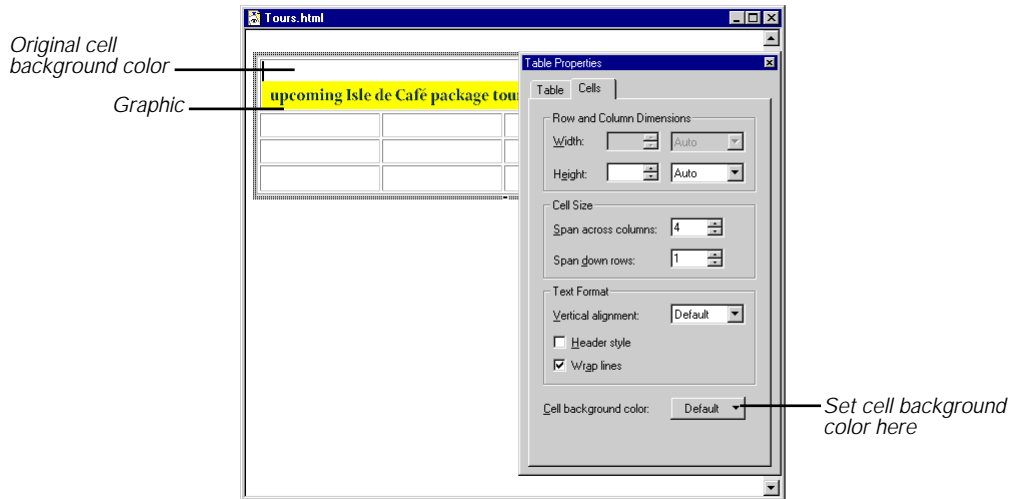
- 1 Drag and drop the title “upcoming Isle de Cafe package tours” into the top cell, as shown in this illustration:



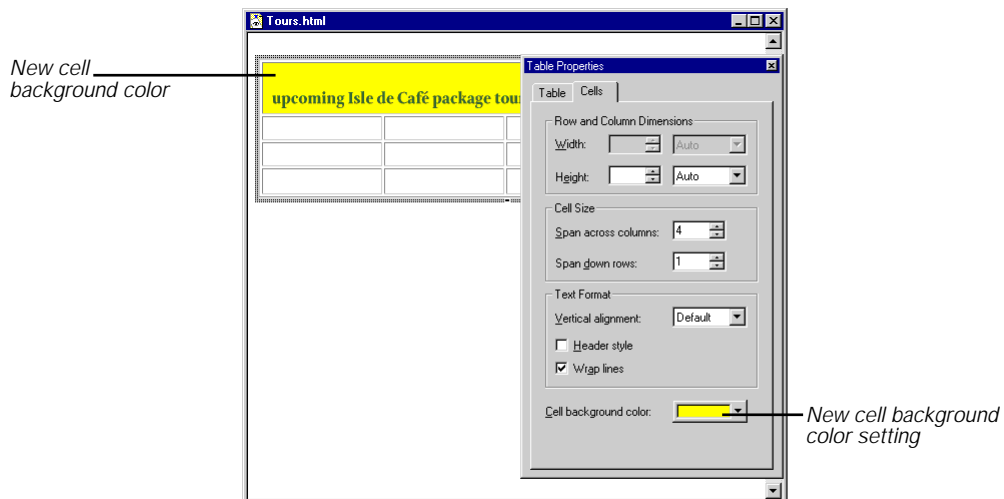
Drag and drop the graphic from the Web page into the table cell

- 2 While keeping the insertion point in the top cell, choose Edit, Properties, then Table Properties.

- When the Table Properties dialog box displays, click on the Cells tab. The dialog box displays as shown:



- Set the Cell background color drop-down color well to match the yellow graphic. Visual Page instantly applies the color to the cell's background:



- Make sure to close the dialog box and save your changes.

Adding the tour text to the table

While you could cut and paste, or even retype the tour information, the easiest way to move the descriptions of the Isle de Cafe tours into the table, is to drag the text from the Web page and drop it into the table.

To move the Tour information into the table:

- 1 Select the first tour title, then drag it to the table and drop it into the column cell at the top left of the first empty row.
- 2 Repeat step 1 for the other two tour titles, moving down a row each time.
- 3 Select and drag the number of days from the second and third paragraphs (12 days and 14 days) and drop that text into the second column of the second row and third rows, respectively. Do not drag the number of days from the last paragraph yet.
- 4 Select and drag the price from the second and third paragraphs into the third column of the second row (\$4500) and third row (\$3500), respectively. Leave the price and duration for the third paragraph for now.
- 5 Select and drag the descriptions for each of the tours into the appropriate fourth column cell.

When you finish, your table should look like this:

upcoming Isle de Café package tours			
Isle de Café: A Gastronomic Adventure	12 days	\$4500	Dine on the creations of top chefs and learn their culinary secrets. Learn to prepare Isle de Café ethnic specialties.
Adventurous Singles Tour	14 days	\$3500	Meet others with a variety of fun activities designed to maximize your enjoyment of the Isle de Café paradise. Everyone becomes friendlier as the stresses fade at Isle de Café.
Active Adults Tour			Scuba dive, snorkel, and surf in the turquoise waters of Bungbusi, climb a volcano, hike in tropical rainforests to the edge of a waterfall, white water raft on a Modema river, pack a llama for a ride to Simerilia temples, and much more. For those who can't take Isle de Café sitting down.

Creating space in the table for options

There are two options for length and price of the Active Adults Tour, in paragraph four, which are not yet in the table. The table needs to be adjusted for these because they share the same description and tour title. To adjust the table, you are going to make the title and description cells span two rows, after you first add another row.

To adjust the table cells for the Active Adults Tour options:

- 1 Place the insertion point in Active Adults Tour title cell.
- 2 To add the new row, choose Insert, Table, then Add Row After. If there is no insertion point in the table, this menu item is dimmed.

An empty row is added at the bottom of the table, making the table appear as shown here:

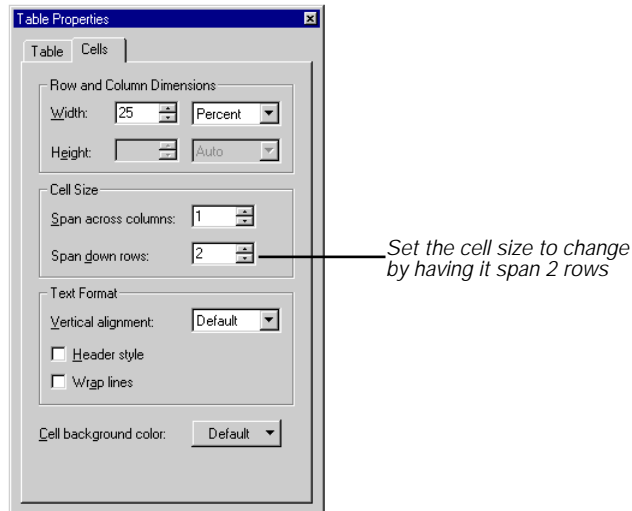
upcoming Isle de Café package tours			
Isle de Café: A Gastronomic Adventure	12 days	\$4500	Dine on the creations of top chefs and learn their culinary secrets. Learn to prepare Isle de Café ethnic specialties.
Adventurous Singles Tour	14 days	\$3500	Meet others with a variety of fun activities designed to maximize your enjoyment of the Isle de Café paradise. Everyone becomes friendlier as the stresses fade at Isle de Café.
Active Adults Tour			Scuba dive, snorkel, and surf in the turquoise waters of Bungbuni, climb a volcano, hike in tropical rainforests to the edge of a waterfall, white water raft on a Moderna river, pack a llama for a ride to Simerilia temples, and much more. For those who can't take Isle de Café sitting down.

— New row

- 3 Move the insertion point to the Active Adults Tour cell.
- 4 Choose Edit, Properties, then Table Properties.

The view switches to show setting for the current Cells.

- In the Cell Size group, set the cell size to span down two rows, as shown:



- Press Enter key and the Title cell changes to span two rows, as shown in the picture following.
- With the dialog box still open, place the insertion point into the fourth column, with the Active Adults tour description.
- Repeat step 6.

When done, your table looks like this:

upcoming Isle de Café package tours			
Isle de Café: A Gastronomic Adventure	12 days	\$4500	Dine on the creations of top chefs and learn their culinary secrets. Learn to prepare Isle de Café ethnic specialties.
Adventurous Singles Tour	14 days	\$3500	Meet others with a variety of fun activities designed to maximize your enjoyment of the Isle de Café paradise. Everyone becomes friendlier as the stresses fade at Isle de Café.
Active Adults Tour			Scuba dive, snorkel, and surf in the turquoise waters of Bungbusi, climb a volcano, hike in tropical rainforests to the edge of a waterfall, white water raft on a Modema river, pack a llama for a ride to Simerilia temples, and much more. For those who can't take Isle de Café sitting down.

- 9 Close the Table Properties dialog box.
- 10 Now you can drag the remaining tour information into the cells:
 - In the second column drag in 7 days and 14 days, to the top and bottom cells, respectively.
 - In the third column \$3500 and \$6500 go in the top and bottom cells, respectively.

Finishing the Custom Tours table

Since all the information is in the table now, you want to adjust the table so the information presents itself attractively. The duration and cost columns are way too big for the size of the information they contain. You decide to adjust them to fit the information.

To adjust column and row sizes for the Upcoming Tours table:

- 1 Make the table active by clicking anywhere inside it.

In the active state, the table is outlined with a thick grey border and dark colored handles. This is the state that allows you to modify the table in some way. You can see the active state appearance of a table below:

upcoming Isle de Café package tours			
Isle de Café: A Gastronomic Adventure	12 days	\$4500	Dine on the creations of top chefs and learn their culinary secrets. Learn to prepare Isle de Café ethnic specialties.
Adventurous Singles Tour	14 days	\$3500	Meet others with a variety of fun activities designed to maximize your enjoyment of the Isle de Café paradise. Everyone becomes friendlier as the stresses fade at Isle de Café.
Active Adults Tour	7 days	\$3500	Scuba dive, snorkel, and surf in the turquoise waters of Bungbusi, climb a volcano, hike in tropical rainforests to the edge of a waterfall, white-water raft on a Moderna river, pack a llama for a ride to Simerilia temples, and much more. For those who can't take Isle de Café sitting down.
	14 days	\$6500	

Active table appearance

TIP: You cannot delete a table unless it is selected. To select a table, click directly on its border and it will show a dark black outline.

- 2 Move the cursor over a vertical or horizontal divider.

As it passes over divider lines, the cursor changes appearance to indicate that you can move the vertical and horizontal borders.

- 3 To adjust the row or column sizes place your cursor over a dividing line and drag the divider to the desired size.
- 4 Repeat step 3 as needed until the table looks good.

Centering text in the middle columns

You decide that one last formatting detail needs to be done to make the table look just right. And, it probably is true that the text in the Length and Cost columns will look better if it is centered. In Visual Page you can select the columns all at once and center everything in an easy two-step procedure.

To center the text in the Prices and Duration columns:

- 1 Select all the text in columns 2 and 3 of the Travel Table by clicking in the upper left corner and dragging diagonally through the columns.

The selected cells are shown in the following picture:

upcoming Isle de Café package tours			
Isle de Café: A Gastronomic Adventure	12 days	\$4500	Dine on the creations of top chefs and learn their culinary secrets. Learn to prepare Isle de Café ethnic specialties.
Adventurous Singles Tour	14 days	\$3500	Meet others with a variety of fun activities designed to maximize your enjoyment of the Isle de Café paradise. Everyone becomes friendlier as the stresses fade at Isle de Café.
Active Adults Tour	7 days	\$3500	Scuba dive, snorkel, and surf in the turquoise waters of Bungbuni, climb a volcano, hike in tropical rainforests to the edge of a waterfall, white water raft on a Madama river, peak a llama for a ride to Simerilia temples, and much more. For those who can't take Isle de Café sitting down.
	14 days	\$6500	

Click and drag across the cells to select

- 2 Select Format, Paragraph, Alignment, then Center.

Visual Page simultaneously centers all the text in both columns so that the table now looks like this:

upcoming Isle de Café package tours			
Isle de Café: A Gastronomic Adventure	12 days	\$4500	Dine on the creations of top chefs and learn their culinary secrets. Learn to prepare Isle de Café ethnic specialties.
Adventurous Singles Tour	14 days	\$3500	Meet others with a variety of fun activities designed to maximize your enjoyment of the Isle de Café paradise. Everyone becomes friendlier as the stresses fade at Isle de Café.
Active Adults Tour	7 days	\$3500	Scuba dive, snorkel, and surf in the turquoise waters of Bungbusi, climb a volcano, hike in tropical rainforests to the edge of a waterfall, white water raft on a Moderna river, pack a llama for a ride to Simerilia temples, and much more. For those who can't take Isle de Café sitting down.
	14 days	\$6500	

- 3 Finish the Custom Tours page by deleting everything left from the former paragraphs above the table.

Your finished Custom Tours page now looks, as follows:

custom *and* package tours

We offer custom tours and a limited number of exceptional preplanned package tours. To inquire about our tours, [send us e-mail](#) and specify whether you are interested in our custom or preplanned tours. We will send you a list of fees, and for custom tours, a survey of your interests.

upcoming Isle de Café package tours			
Isle de Café: A Gastronomic Adventure	12 days	\$4500	Dine on the creations of top chefs and learn their culinary secrets. Learn to prepare Isle de Café ethnic specialties.
Adventurous Singles Tour	14 days	\$3500	Meet others with a variety of fun activities designed to maximize your enjoyment of the Isle de Café paradise. Everyone becomes friendlier as the stresses fade at Isle de Café.
Active Adults Tour	7 days	\$3500	Scuba dive, snorkel, and surf in the turquoise waters of Bungbusi, climb a volcano, hike in tropical rainforests to the edge of a waterfall, white water raft on a Moderna river, pack a llama for a ride to Simerilia temples, and much more. For those who can't take Isle de Café sitting down.
	14 days	\$6500	

Congratulations! You finished another of the Amazing Adventures Web site pages. Let's move now to the Reply Web page. As you close this Web page, be sure to save the changes you made.

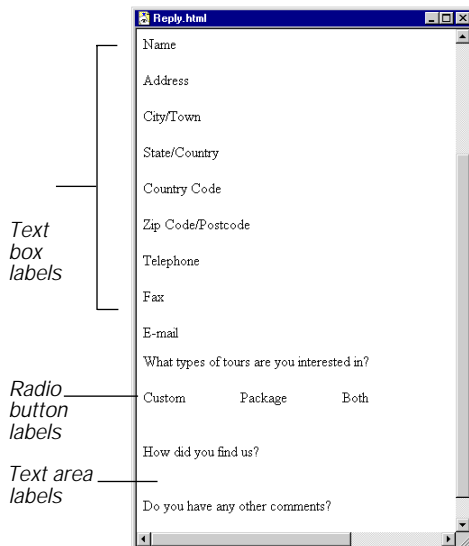
Creating the reply form

The travel agency wants to make it easy for new clients to send them requests for information from the Amazing Adventures Web site. To fulfill this requirement, you are going to build a Web page containing a reply form that has user interface elements for a customer to fill in. The form will provide places for a customer to indicate the kinds of travel tours in which they're interested, add personal information, and enter their comments. It will also add a button that they can use to send the form via e-mail to Amazing Adventures Travel.

While creating the reply form you will be:

- Using the form palette
- Inserting groups of radio buttons
- Adding text input fields
- Placing Send and Reset buttons

The Web page **Reply.html** has been set up for you to use in the following procedures. It contains the e-mail title header and labels for fields and buttons you'll add. The different labels for the user interface elements you'll add in these steps, are shown in the following illustration:



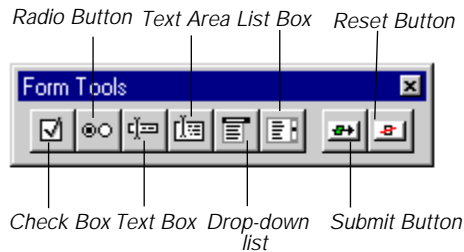
Adding text boxes to the reply form

Using the Form Tools toolbar is the easiest way to add the buttons, menus, and text input fields to your Web page. You'll use this toolbar to add all the interface elements you need for the E-mail Reply form Web page. In this first set of steps you'll open the Form Tools toolbar and use it to add fields for entering text from the keyboard.

To quickly add the text boxes after their labels:

- 1 Open the file named: **Reply.html**. It's in the Tour folder at the root level.
- 2 Choose View, then Toolbars and make sure that Form Tools is checked.

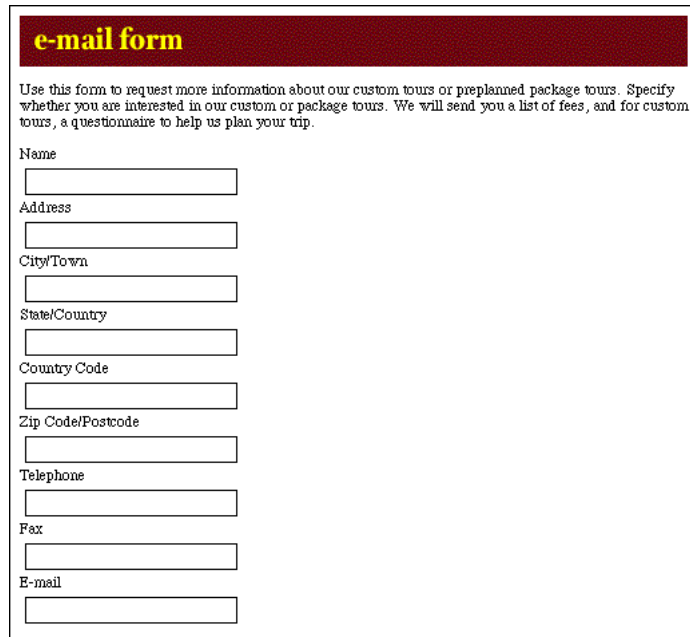
The Form Tools are the part of the toolbar that looks like the following illustration:



- 3 Place the insertion point on the blank line after a label. (The first label is Name the last is E-mail.)
- 4 Click the Text Box button on the Forms Palette. A text box displays.
- 5 Repeat steps 3-4 for each of the labels for Name through E-mail.



When finished, your screen appears as follows:



e-mail form

Use this form to request more information about our custom tours or preplanned package tours. Specify whether you are interested in our custom or package tours. We will send you a list of fees, and for custom tours, a questionnaire to help us plan your trip.

Name

Address

City/Town

State/Country

Country Code

Zip Code/Postcode

Telephone

Fax

E-mail

- 6 Resize the fields to the width of the title banner by:
 - Clicking on the input field border to select it
 - Dragging a handle on the right side of the box

Adding the radio buttons

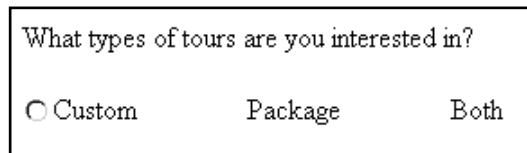
Since you want the customer to choose between three types of tours, you are going to add a group of three radio buttons, which they can use to indicate their choice.

To add the radio buttons for indicating tour choices:

- 1 Scroll down past the text boxes you added to **Reply.html** previously, and place the insertion point on the same line as the word Custom, before the initial C.
- 2 Click the Radio Button on the Form Tools toolbar.



A radio button displays on the Web page next to the label:



What types of tours are you interested in?

Custom Package Both

- 3 Select the radio button by clicking on it once.

Its selected appearance is shown in the following picture:



Selected radio button

- 4 With the button selected, choose Copy from the Edit menu.
- 5 Place the insertion point before the initial P of Package.
- 6 Choose Paste from the Edit menu.
The copied radio button displays. When you use a copy of one radio button to generate the radio buttons, Visual Page understands that this is a set of radio buttons which should function as a group. If you use this approach, your group of radio buttons will work in Preview mode as they would on a finished Web page.
- 7 Repeat steps 5-6 with the last label, Both.
- 8 Choose View, then Preview Page to switch to Preview mode.
- 9 Click on any radio button in the group and you see that only one is selected at a time, just as you would expect.
- 10 Choose View, then Page to switch back to Edit mode.

Adding customer comment areas

In order to find out what your customers want, you give them some extra space where they can type as much as they want. You do this with a scrolling text area. In the following steps you place a scrolling text area after each of the questions at the bottom of the Web page.

To insert the scrolling text areas:

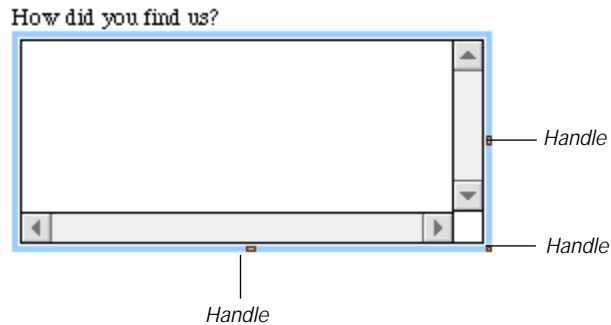
- 1 You should already have the file named **Reply.html** open and the Form Tools toolbar visible.

- 2 Place the insertion point on the blank line, after the question, “How did you find us?”



- 3 On the Form Tools toolbar, click the Text Area button.

A text area displays on your form. It’s shown in the following illustration in an active state:



- 4 Resize the text area to the width of the text boxes at the top of the form, by dragging the appropriate handle.
- 5 Repeat steps 1-4 to add another scrolling text area after the question, “Do you have any other comments?”

Adding the Submit and Clear buttons to the e-mail form

To finish the e-mail Web page form, you are going to add two buttons at the bottom of the form which are labelled:

- Submit; this automatically sends the e-mail when clicked
- Clear; this button conveniently clears all the user input

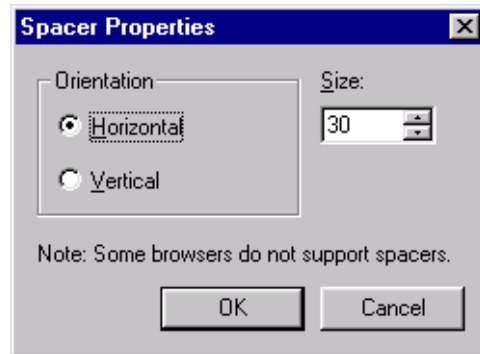
To add the Submit and Clear buttons:

- 1 Place the insertion point on a blank line at the bottom of the Web page.
- 2 If the insertion point is not in the center of the line, choose Align Center from the Format menu.



- The insertion point displays in the center of the line.
- 3 Click the Submit button icon on the Forms Palette.
A Submit button displays at the center.
 - 4 With your insertion point placed after the Submit button, choose Spacer from the Insert menu.

The Spacer Properties dialog box displays, as shown:



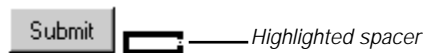
Spacers create a rectangular area of blank space

Spacers create blank space and so are usually invisible. In this case the spacer will create a space between the Submit and Clear buttons.

- 5 Leave the Spacer Properties as they are and click OK.

The spacer is inserted but all you see is the cursor move the number of pixels specified in the dialog box. The default spacer settings create 30 pixels of horizontal whitespace. This is fine for our purposes.

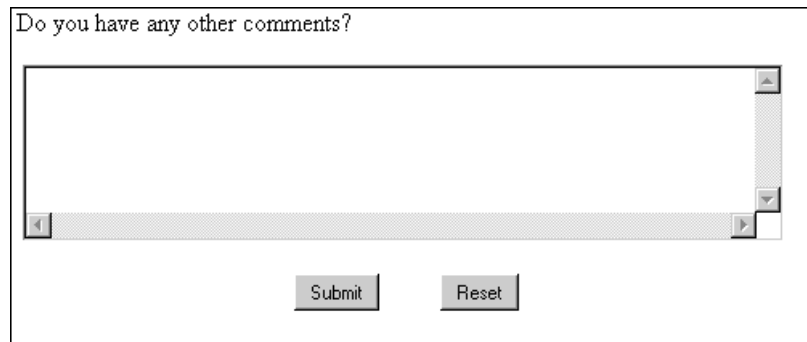
You can see the spacer only if you select it, as it is shown in the following illustration:



- 6 If it's not already there, place the insertion point after the spacer.

- 7 Click the Reset button icon on the Form Tools toolbar.

A Reset button displays next to the now invisible spacer, so that this portion of the Web page now looks like this:



- 8 Double-click on the word Reset on the Reset button.

When selected, it looks like this:



- 9 Type Clear.

This changes the text of the button from Reset to Clear.

Save your changes and this Web page is finished! In fact, the whole Amazing Adventures Web site is well on its way to being finished. Before going on, make sure to close this Web page.

Note: Forms, like the e-mail form you just created, require code to communicate with your Web server before they can pass data from users — like names and e-mail addresses — back to you. See the *Visual Page User's Guide* for more information about CGI scripts.

Summary

In this chapter you worked on four Web pages for the Amazing Adventures Travel Web site. Along the way, you were introduced to many Web page building concepts.

In creating the Client Comments Web page you learned to:

- Create a new, blank Web page
- Add the new Web page to a project
- Import text (the Client Comments) from an existing text file
- Add a graphic (the Client Comments title banner) to the Web page

While you were creating the island map Web page you learned to:

- Add graphics (island photos) to a Web page
- Flow text around graphics (the photos)
- Resize graphics (the photos)
- Make the section titles bold

While formatting the custom tours table you learned to:

- Create a new table
- Span a cell across the top of the table
- Change cell color
- Drag and drop text into the table
- Adjust the size of columns and rows
- Add a row

- Span a cell across rows
- Simultaneously center the text in all cells of two columns

While working on the interactive e-mail reply form, you learned to:

- Add single-line text entry boxes, as well as scrolling text areas
- Use radio buttons
- Position and add Submit and Clear buttons to a form

What's next

You're now over half-way finished with the Visual Page tour and have done most of the basic building of the site. Essentially, what's left is the creation of the home page, linking together the parts of the site, and adding movement to the opening Web page. You'll accomplish these things and finish up the Amazing Adventures Web site in [“Adding life to the Amazing Adventures Web site”](#) on page 5-1.

Adding life to the Amazing Adventures Web site

One of the best features of the World Wide Web and Web pages in general, is the support they provide for animated and interactive elements. To entice your visitors you'll add the following interactive elements to different Amazing Adventures Web site Web pages:

- An animated airplane and pilot
- A slide show controller which visitors click on to change photos
- Locations on an island map which bring you more information
- Linked icons which visitors click on to display Web pages

In this chapter, you'll also create the Home page and use it to tie together all the Web pages in the Web site. This is done by linking the Home page Table of Content icons to the other Web pages you worked on in β . By the end of this chapter you will have an entire working Web site.

Creating movement on the Home page

The opening Web page is the first screen visitors see when they arrive at the Amazing Adventure Web site. You know that to make a good impression, it needs to be attractive, exciting, and engaging. You want to draw people into Amazing Adventures, so they will spend some time exploring the tour package information the Web site contains.

You already have some colorful, custom-designed fonts for the Amazing Adventures Travel logo and an interesting looking Isle de Cafe description in place on the opening Web page that help make it attractive. But you still need some movement on the Web page and have an interactive slide-show and an animation you are going to add.

The following illustration shows the images, animations, and interactive slide show which you plan to incorporate as part of the opening view of the Web site:

TOC graphic links

Home Page and Slide Show

Island Map and Information

Client Comments

Custom and Package Tours

E-mail Request Form

Custom-designed logo graphic

Graphic

Applet animation

Graphic

Applet slide show with clicker control

Graphic

Amazing Adventures Travel rated four stars by *Travel Sophisticate*, *Outdoor Adventurer*, and *Academic Traveler* magazines.

Adding the plane animation

You are about to add the animated plane and pilot to the Isle de Cafe Home page. Since this animation happens to be in the form of a Java applet, you'll be adding a Java applet to your Web page here.

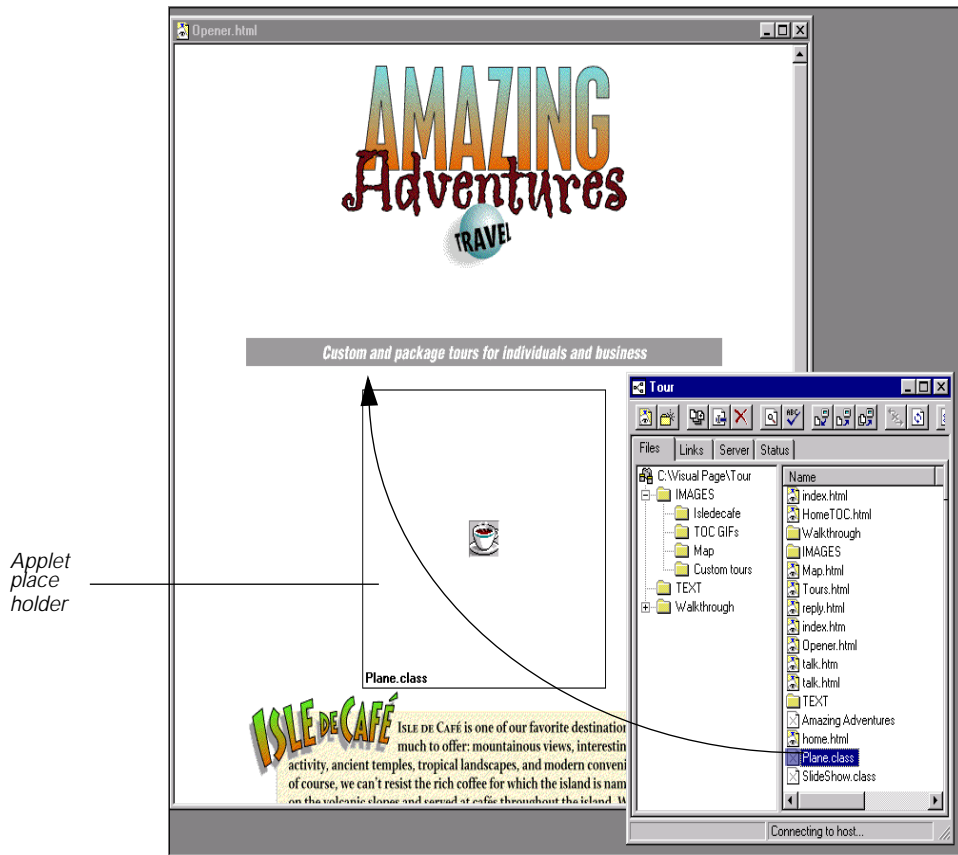
As Java applets are really mini-applications for Web pages, you should know that before it's ready for a Web page, a Java applet must be coded, tested, debugged, and compiled in a development environment like Symantec's Visual Cafe. If you own Visual Cafe, you can build the applets that come with this Tour by working through the *Getting Started with Visual Cafe* Tour.

The applet you're going to use has already gone through the process of being coded, tested, debugged, and compiled. You will be doing the fun part, which is adding the applet to the Web page and previewing it to see it work.

To insert the plane applet:

- 1 Open the Tour Project window at the root level of the Tour folder.
- 2 From the Tour Project window, double-click on **Opener.html** to open it.
- 3 Drag **plane.class** (the applet) to the line after the small subheading graphic: "Custom and package tours for individuals and business."

An applet placeholder displays on the Web page.



- 4 Double-click on the applet placeholder.
The Java Applet Properties dialog box displays.
- 5 In the Java Applet Properties dialog box, set the dimensions of the applet to: Width 500 and Height 80. It's important to get the size right on this applet or the graphic won't display when you try to view it in Preview mode or in a Browser.
- 6 Press OK to close the dialog box.

After the placeholder's size is adjusted, it displays as shown in the following picture:



- 7 You can see the plane applet come to life in your Web page without leaving the Visual Page application — just choose View, then Preview Page. If you didn't install the Java folder when you installed Visual Page, choose View, then Preview in Browser to see the applet running in whatever Java-enabled browser you have installed on your computer.

The Java coffee cup changes to the Amazing Adventures mascot shown below:



- 8 Switch back to Edit mode by choosing View, then Page.

Adding the interactive slide show

Now you are going to add the other interactive piece of the opening Web page: the slide show. When a visitor clicks on the controller arrow, the Isle de Cafe photo switches to a new picture and its corresponding text:



Like the animation applet, this applet has already been compiled and tested for you.

To insert the slide show applet:

- 1 Drag **SlideShow.class** from the Project window and drop it on a line after the “Isle de Cafe” paragraph.
A second applet placeholder displays.
- 2 Open the Java Applet Properties dialog box by double-clicking on the **SlideShow.class** placeholder.
- 3 Set the dimensions of the applet to: Width 525 and Height 350.
This is so you’ll be able to see the whole applet.
- 4 Click OK to close the dialog box.
- 5 If you installed the Java folder with the application, you can choose View, then Preview Page and see the slide show applet running in your Web page.
- 6 If you didn’t install the Java folder, choose View, then Preview in Browser. The Web page opens in your Java-enabled browser so you can try out the slide show.

Aligning the applets and graphics

You want the graphics on the opening Web page to be centered, so that despite the width of the browser displaying your Web page, the graphics will always adjust to the center of the display frame.

To align the graphics in the opening Isle de Cafe Web page:

- 1 The opening Web page, `Opener.html` should still be open. Choose View, then Page to switch back to Edit mode.
- 2 Choose Select All from the Edit menu.
All the elements on the Web page are selected.
- 3 Choose Format, Paragraph Alignment, then Center.
Everything immediately moves to the center of the Web page.
- 4 Remember to save your changes and close the Web page.

The opening Web page is finished! In the next section you are going to go back to the Island Map Web page and finish it by making the map locations clickable.

Making the map clickable

The Island Map Web page is fairly long because there are four towns on the island which you want to describe in detail. To make the length of the Web page easier to navigate, you decide to make the locations on the map respond to a mouse click by automatically scrolling the Web page to the location's description.

While authoring this Web page, you will learn to:

- Insert anchors — you use these to mark the Web page at the start of the description for each town
- Set up the island map to function as an image map — **image map** is the technical term for a graphic that has clickable regions which link to more information
- Outline the clickable areas on the island map
- Link the locations on the map to the anchors in the text

Marking the descriptions with anchors

Before you can link the map to the title for each town, you must first identify the matching titles with HTML markers known as anchors.

To mark each description's title with an anchor:

- 1 Open the **Map.html** Web page.
- 2 Place your insertion point before the Bungbusi header.
- 3 Choose Anchor from the Insert menu.
- 4 In the Anchor Properties dialog box, type Bungbusi.

When you close the dialog box, an anchor symbol displays next to the title. You can see the anchor marker when viewing the Web page in editing mode only. The marker is invisible when the Web page displays in a Web browser. Here's how an anchor appears while you're editing:



- 5 Repeat steps 2-4 to create anchors for the other headings. Make sure you substitute the names Venduca, Simerilia, and Moderna in those steps.

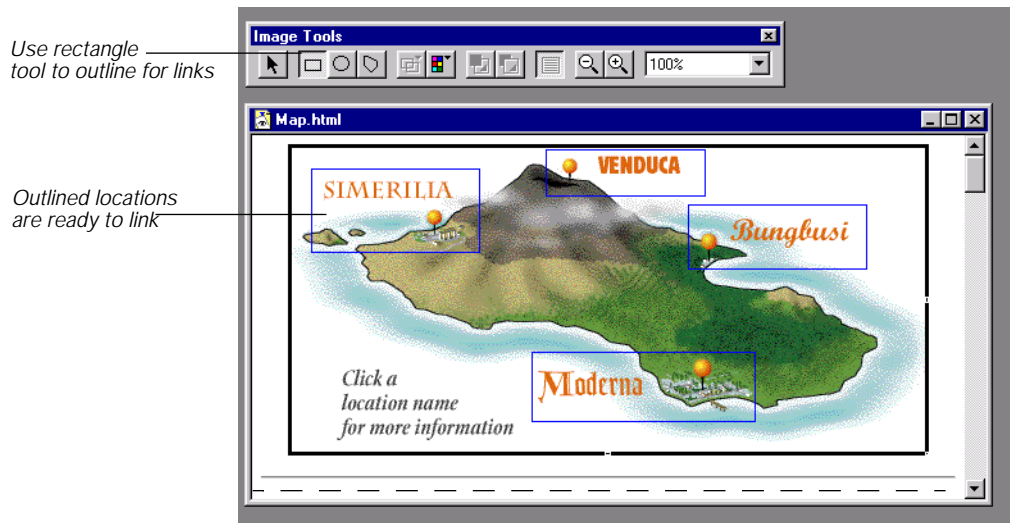
Setting the map to function as an image map

Now that the anchors are set in the text, you are going to outline the areas on the island map graphic, at the top of the Web page, which will link to the anchors. After you outline these, you can link them to the anchors marking the corresponding descriptions.

To change the island map to function as an image map:

- 1 Open **Map.html**, if it is not already open.
- 2 Choose View, Toolbars, then Image Tools.
The Image Tools toolbar displays. You're going to use its tools to outline and link the map areas.
- 3 Click on the map image, at the top of the Web page, to select it.

- 4 Use the rectangle drawing tool to outline the locations on the map, as shown:



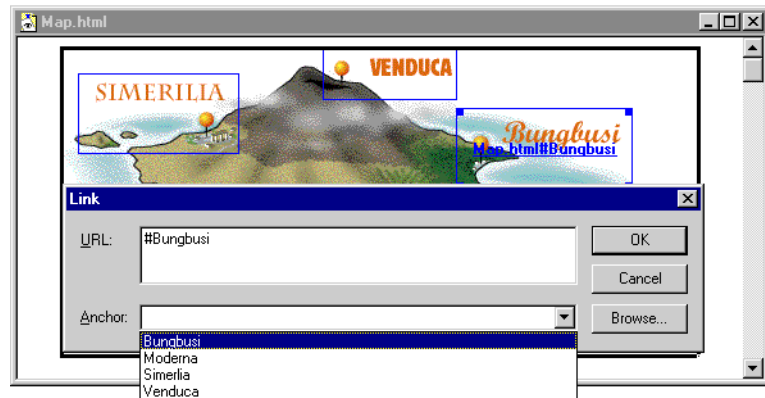
Linking the towns to their descriptions

Now that you've set up the map graphic and marked the descriptions in the text with anchors, it's time to link the two.

To link the towns to the corresponding anchors:

- 1 Double-click the Bungbusi rectangle to open the Link dialog box.
- 2 Click on the Anchor drop-down arrow and select Bungbusi, as shown in the following illustration.
- 3 Click OK to close the dialog box.

Notice that the URL now displays in the selection rectangle, after you complete the process:



- 4 Repeat steps 1-3 with the anchors and selection rectangles for: Venduca, Simerilia, and Moderna.
- 5 After you save the changes, you can try out the links in Preview mode to make sure they work correctly.

Once you're satisfied that the map links work as planned, you're done. Another Web page is finished! Save your changes and close this Web page to get ready for the next step. In the following section, you are going to create the Home page and link the other Web pages, which you already finished, to the Table of Contents.

Creating the Home page

While constructing the Amazing Adventures Home page you are going to:

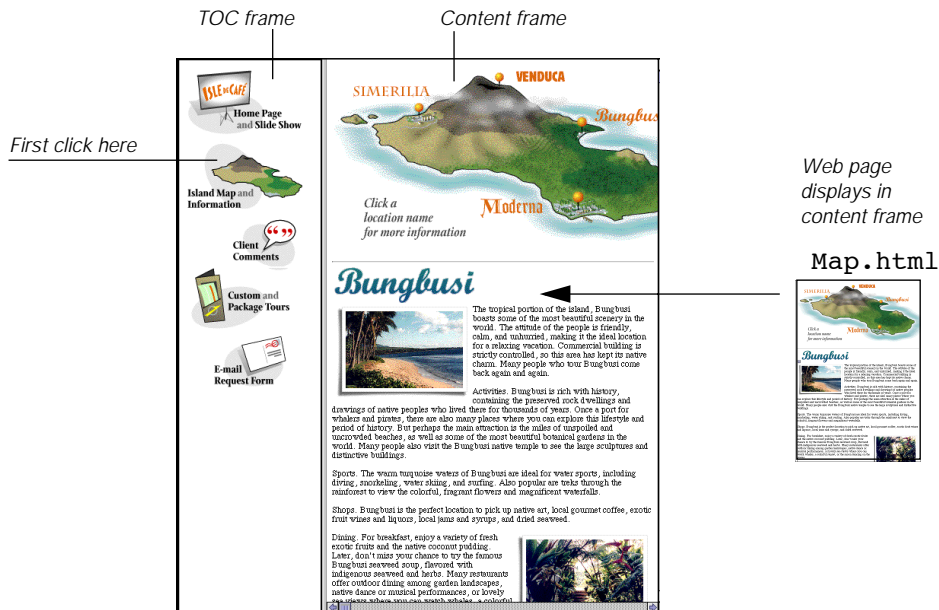
- Create a new Web page with two frames
- Set each frame to display a different Web page
- Link the TOC icons to the Web pages you finished earlier

Opening the new page — with frames

Back in the planning stages of this project, you decided to divide the Amazing Adventure Home page into two or more framed areas. The frame on the left of the Home page is to always display the Table of Contents

(TOC) icons. Those icons will link to the Web sites' other Web pages so that when clicked, they will display in the Home page frame on the right.

Using this scheme, the TOC icons become a kind of landmark that is always visible and at the left side of the Web page. If your customers want to see another of the Amazing Adventure Web pages, they just click on any of the TOC icons and the Web page linked to that icon will display in the content frame on the right side of the Home page. The general logic of how the Home page works, is shown in the following illustration:



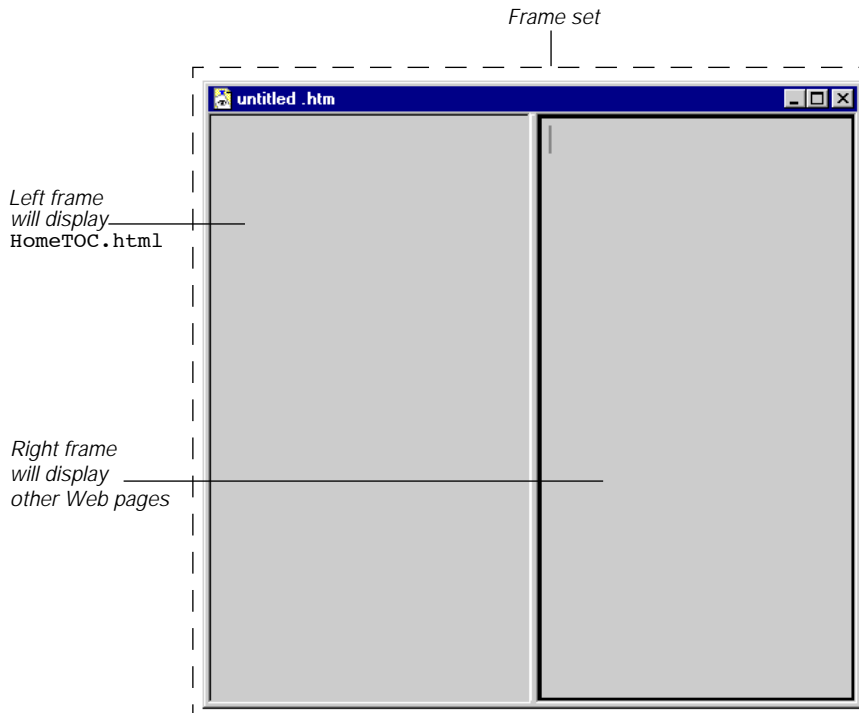
The following steps show you how to create a Web page with the two frames required by this design.

To create the Amazing Adventures Home page:

- 1 Select New Frame Set from the File menu.

A new Web page displays. It is divided vertically into two independent Web page display areas — known as **frames**. The Web

page which contains the frames is known as a **frame set**. The new frame layout and its frames are shown in this picture:



- 2 Choose Save Frame Set As from the File menu, to save. this Web page at the root level of the Tour folder as: **Home.html**.

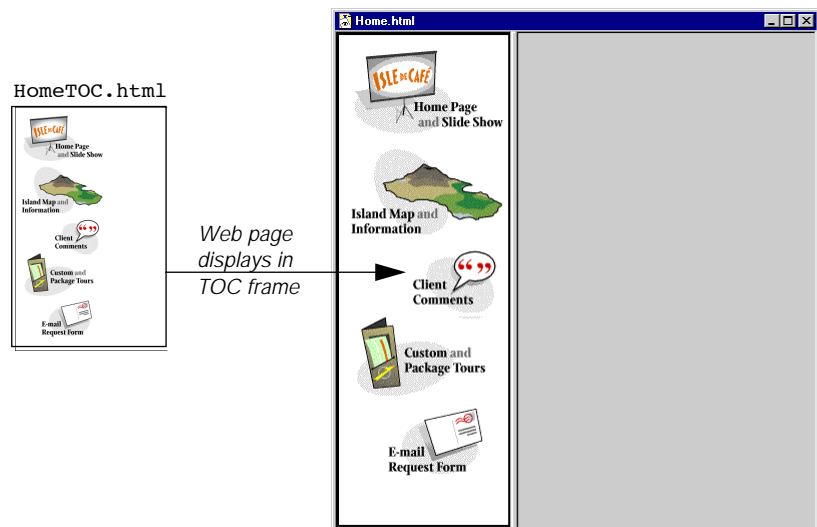
Setting up the Home page Table of Contents

Keeping in mind that each of the Home page frames can display a Web page, you are going to assign an already existing HTML source file to each frame. Each frame will then display a different Web page.

Rather than putting the TOC icons directly into the frame on the left, you are going to set that frame to display a ready-to-use Web page, **HomeTOC.html**. This Web page is at the root level of the Tour folder.

To assign a Web page to display in the TOC frame:

- 1 The Home page (**Home.html**) should still be open. Select the TOC frame (on the left) of the Home page by clicking anywhere in it.
A heavy selection border outlines the left frame of the Home page.
- 2 From the Frame menu, choose Set Frame Source.
An open file dialog box displays.
- 3 Navigate to **HomeTOC.html** (it's at the root level of the Visual Page Tour folder) and double-click to open it.
When you open **HomeTOC.html**, it displays in the selected frame.
- 4 Resize the frames so your Web page looks proportional to the one shown in the following picture:



Setting up the opening page display

Now that the Table of Contents is displayed in the left frame, you're going to set the frame at the right of the Home page to display the Amazing Adventures opening Web page (**Opener.html**.)

To assign the opening Web page to display in the content frame:

- 1 Select the content display frame (on the right) of the Home page by clicking anywhere in it.

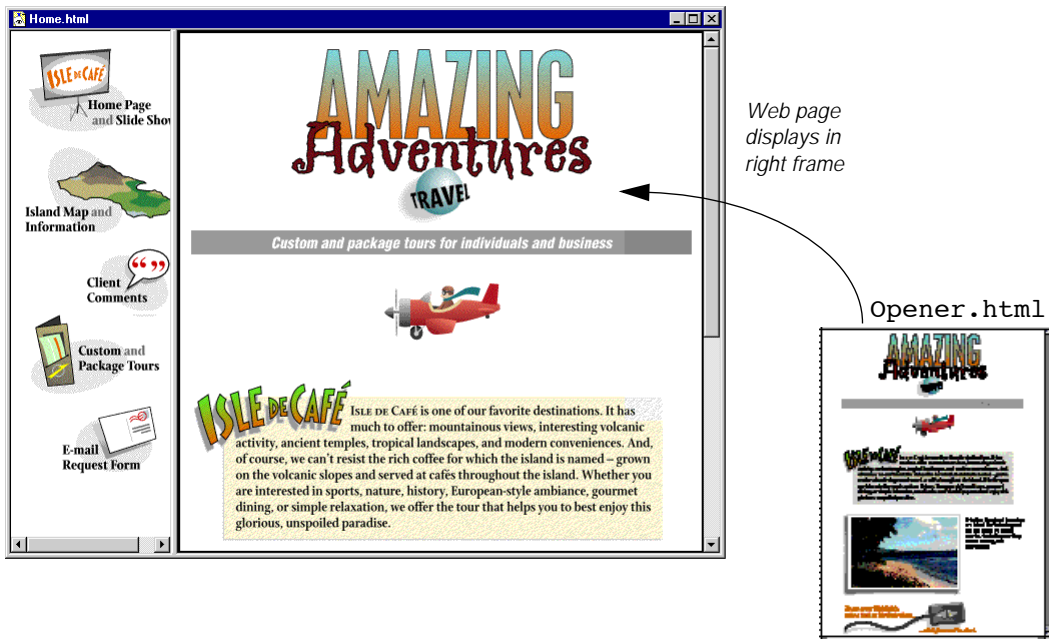
A heavy selection border outlines the frame on the right.

- 2 From the Frame menu, choose Set Frame Source.

An file dialog box displays.

- 3 Using the dialog box, navigate to **Opener.html** (it's at the root level of the Visual Page Tour folder) and double-click to open it.

When you open the Web page (**Opener.html**) it displays in the selected frame. If you switch to Preview mode, your Web page will look like the Home.html Web page shown at the left of the following illustration:



Creating a working Table of Contents

You decided at the beginning of this project that the Table of Contents would always display in the left frame of the Home page and all its linked Web pages would display in the neighboring frame. To make this work you must:

- Link the Table of Contents icons
- Set linked Web pages to display in the Home page's right frame

Linking Web pages to the Table of Content icons

You've planned it so that one Web page corresponds to each of the TOC icons. After you finish linking these icons to the Web pages, you can use the Visual Page Preview mode to test the links.

Note: The HTML files you need when linking the icons are all at the root level of the Tour folder.

To link the TOC icons:

- 1 Open the Project window and position it so it's visible at the side of the Home page. (The **Home.html** Web page should already be open. If not, open it.)
- 2 Click on a Home page TOC icon (in the left frame) to select it. It displays with a heavy black border.
- 3 Drag the Web page file corresponding to the icon (shown in the second column of the following table) from the Project window and drop it on the selected TOC icon.

Link this Icon	To this Web page
Home Page and Slide Show	Opener.html
Island Map and Information	Map.html
Client Comments	Talk.html
Custom and Package Tours	Tours.html

Link this Icon	To this Web page
E-mail Request Form	Reply.html

- 4 Repeat steps 2-3 until all the icons are linked.
- 5 Make sure to save your changes.
- 6 Switch to Preview mode by choosing Preview View, then Preview Page.
- 7 In Preview mode, click once on any linked icon.

Notice that when the Web page displays, it displays in a separate Web page window. That's because all links in a Web page default to displaying their linked Web pages in separate windows. In the next section, you'll redirect the Home page's display of linked Web pages to the designated content frame.
- 8 Except for the Home page, close all the other open Web pages.
- 9 Choose View, then Page to switch back to Edit mode.

Setting the display destination of the TOC links

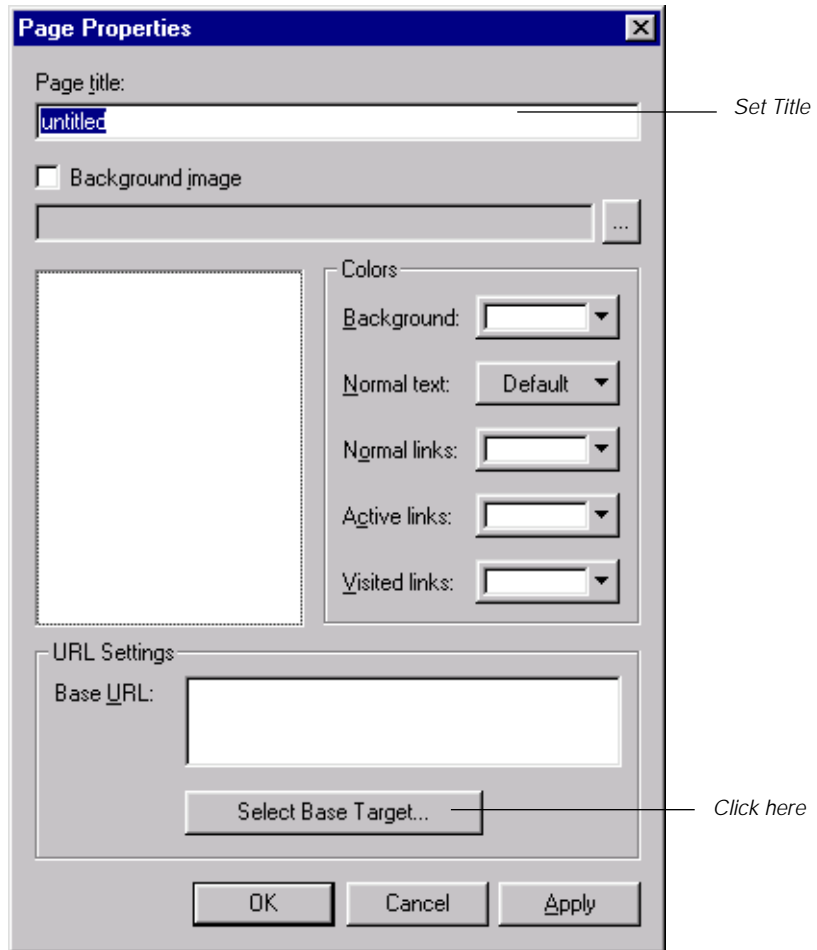
You need to set the Home page to display its linked Amazing Adventures Web pages in the content frame on the right of the Home page. You achieve this by identifying the frame on the right side of the Home page as the “display target” of the Home page. With this setting, any Web page links on the Home page are displayed in the content frame rather than in a new window, which is the default case.

To set a display target for the TOC icons:

- 1 The `Home.html` file should still be open.
- 2 Click once in a blank area of the TOC frame to select it. (Click outside the icons or you'll select an icon instead.)

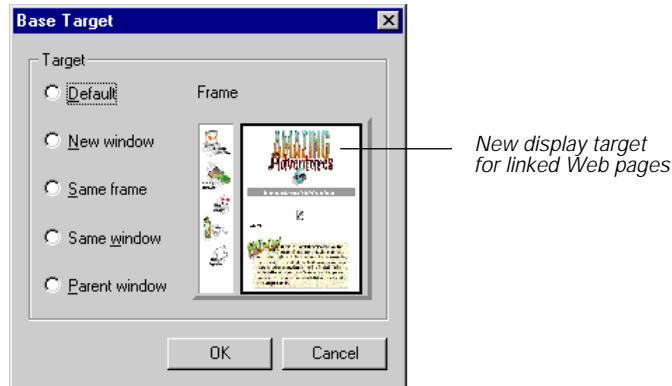
The TOC frame is outlined by a heavy black border.
- 3 Choose Edit, Properties, then Page.

The Page Properties dialog box displays. The settings you will change are labelled in the illustration shown below:



- 4 In the Page Properties dialog box, click on Select Base Target.
The Base Target dialog box displays, with a thumbnail sketch of the Home page in it. (See the next illustration.)
- 5 In the Base Target dialog box, click on the frame on the right of the thumbnail sketch to select it.

The new display target for the linked Web pages, appears as shown in the following illustration:



- 6 Click OK to close the Base Target dialog box.

The Base Target dialog box closes but the Page Properties dialog box is still open.

- 7 Set the Title in the Page Properties dialog box to Home.

This title shows in the title bar of the Web page when it is displayed in a Web page browser.

- 8 Click OK to close the Page Properties dialog box.

The settings for the Home page are finished.

Testing the Home page Table of Contents

You now need to test the Table of Contents' links to see if everything works to your satisfaction. The Visual Page Preview mode enables you to do this quickly.

Previewing links in the Home page:

- 1 With the Home page still open, switch to Preview mode by choosing View, then Preview Page.
- 2 Move the pointer over the Island Map and Information icon.
The pointer turns into a hand icon.
- 3 Click the icon.

The Web page should display in the frame on the right side of the Home page. If it does not, recheck the steps in the previous set of procedures.

- 4 Repeat steps 2-3 for all the icons in the Home page Table of Contents frame.
- 5 Save your changes.
- 6 When you display the Custom and Package Tours Web page, try clicking on the “send us e-mail” link. If the display target was set correctly in the Document Settings for the Home page, this linked Web page will also display in the content frame on the right of the Home page.

Now that everything works, take a little time to congratulate yourself. You’ve just finished building a working Web site! This local Web site is now ready to be published to an Internet server.

Publishing your Web site

Now that you’ve created an entire Web site you are ready to place it up on the Web. The Visual Page Project Manager is designed to expedite this process with its built-in FTP network access tool.

When you publish a Web site, Visual Page uses a **network protocol** (a set of predefined commands) to place the files on a **Web server** — a computer that’s dedicated to storing and sending out Web-based files. The most common protocol used for transferring files to a Web server is the **File Transfer Protocol** (FTP.)

The Visual Page Project Manager uses FTP in the Server tab of the Project window to upload and download your local Web site to and from your system to a Web server. Since the procedure for connecting to an Internet server is slightly different for each connection, no steps are provided here. For more information see the *Visual Page User’s Guide*.

Summary

Your home page and your version of the Amazing Adventures Web site is done! In this chapter you set the interactive elements to work in the Web site by:

- Adding an animation
- Placing an interactive slide show applet
- Creating a home page with frames
- Setting each frame of the home page to display a different Web page
- Linking Table of Contents icons to corresponding Web pages
- Setting the target for the display of linked Web pages to the content frame on the right of the home page

Now that you've had the chance to see how easy it is to build Web pages and link them together as Web sites you can go ahead and put your own ideas into action. A good way to start is to modify or use pieces of the Visual Page templates, which are provided with the application. As you work, you should consult the *Visual Page User's Guide* for more information. We hope you enjoyed the process and will use Visual Page to build many excellent Web pages.

Support Information

This chapter describes where to get more information on Visual Page. It has the following sections:

- Where to get information
- Product updates
- “Symantec service and support solutions”
- Registering your Symantec product
- Technical support
- Electronic support
- Customer service
- Service and support headquarters
- Worldwide service and support

Note: The information in this chapter, including URLs, is subject to change.

Where to get information

Visual Page includes the following documentation:

Title	To find it...
Visual Page Help	Choose Help from the Help menu.
Visual Page User Guide	Included in the Visual Page box.

Product updates

Check the Symantec Web site (www.symantec.com/) for updates to Visual Page. After you have registered your copy of Visual Page, you can use your login name and password to download patches and updates to your current version. If you bought your product in a box, the user ID and password are included with your package. If you bought your product online, the user ID and password were displayed to you on the screen.

Symantec service and support solutions

Symantec is committed to excellent service worldwide. Our goal is to provide you with professional assistance in the use of our software, wherever you are located.

Technical Support and Customer Service solutions vary by country. If you are outside the United States or Canada, please refer to the Worldwide Service and Support section at the end of this chapter.

Registering your Symantec product

If you have ordered the product online, you are automatically registered through Customer Service. In addition, you can use the toll-free fax number listed below to register your product, or register on the Customer Service Home Page under Service and Support at www.symantec.com.

If your address changes, you can mail or fax your new address to Customer Service. Please send it to the attention of the Registration Department.

Symantec Corporation
Attn: Registration Dept.
175 W. Broadway
Eugene, OR 97401

(800) 800-1438 Fax

You can also change your address on the Customer Service Home Page under Service and Support at www.symantec.com.

Technical support

Symantec's Technical Support department offers expanded support options designed for your individual needs and to help you get the most out of your software investment.

The phone numbers listed in the "Service and support headquarters" section are for support in North America. If you are outside the United States or Canada, please call the local Symantec office or distributor in your area, or refer to the information provided at the end of this chapter.

Symantec now offers different types of technical support services for you to choose from, which are described below. You are given StandardCare Support by purchasing the product and then can choose from Symantec's PriorityCare and PremiumCare services to extend your level of support.

For the most current information on Symantec Support Solutions, please call our automated fax retrieval service, located in the United States, at (800) 554-4403 or (541) 984-2490, and request document 070. Alternatively, visit Symantec on the World Wide Web at www.symantec.com.

StandardCare support

All registered users of Symantec products are entitled to these services at no charge:

- Unlimited calls for 90 days (from the date of the first call) for installation assistance, configuration, and general usage questions. The phone number is (541) 465-8470.
- Unlimited technical assistance through America Online. This forum offers electronic access to our technical support staff, libraries of sample files, technical notes, and bulletins. You will also find a rich

interaction and information exchange with other users of Symantec software.

- Unlimited use of the Symantec Discussion Groups available from the Service and Support section on www.symantec.com. These forums offer electronic access to our professional technical support staff, the Symantec knowledge base, FAQs, and announcements. The news server is at service.symantec.com.
- Unlimited access to company information through the Internet. With a Web browser such as Netscape, you get the latest company news by entering the URL for Symantec's home page: www.symantec.com.
- The Web site include links to our anonymous FTP site, where you can download the latest software patches and drivers for Symantec products. You can also FTP directly to the site by entering:
[ftp.symantec.com](ftp://ftp.symantec.com).
- Unlimited use of Symantec's automated fax retrieval system for instant printouts of technical notes, bulletins, product literature, and general information by fax.
- StandardCare Support is available Monday through Friday, 7:00 a.m. to 4:00 p.m. Pacific Time.

For your first 90 days of free technical support, please refer to the StandardCare Support (541) phone number in the "Service and support headquarters" section.

PriorityCare support

All registered users of Symantec products are entitled to these services on a "pay-as-you-go" basis:

- The PriorityCare 800-number is charged to your VISA, MasterCard, or American Express on a per incident basis.
- The PriorityCare 900-number is charged to your telephone bill on a per minute basis. (As of this writing, the charge is \$2 per minute, and an equivalent 900-number service is not available outside the United States.)
- Average hold time will be kept to a minimum.

- PriorityCare Support is available Monday through Friday, 6:00 a.m. to 5:00 p.m. Pacific Time.

To use the PriorityCare 800- and 900-number services, please refer to those numbers in the “Service and support headquarters” section.

PremiumCare support

All registered users of Symantec products are entitled to these services on an annual subscription basis:

PremiumCare Gold support

- Support for one year for a set number of incidents, with an option to add more incidents.
- Priority support on a toll-free 800 line.
- Average hold time will be kept to a minimum.
- Electronic mail support is provided with a 24-hour response time on working days. The PremiumCare Gold Support is available for Visual Page for Windows owners at support_javawin@symantec.com and for Visual Page for Macintosh owners at support@devtools.symantec.com. Please include your subscription ID with any e-mail.
- PremiumCare Gold Support is available Monday through Friday, 6:00 a.m. to 5:00 p.m. Pacific Time.

PremiumCare Platinum support

- Unlimited calls on a toll-free 800 line.
- Average hold time will be kept to a minimum.
- A Support Center Manual with troubleshooting, installation, configuration, and usage information.
- Quarterly updates of technical notes and bulletins.
- Instant access to senior support staff.
- Automatic updates of inline software revisions. (Inline software revisions do not include version upgrades.)

- After hours and weekend support is also available to PremiumCare Platinum customers for an additional fee.
- PremiumCare Platinum Support is charged on an annual subscription basis per product family. The annual fee is for two subscribers; other subscribers can be added on a per person basis.
- PremiumCare Platinum Support is available Monday through Friday, 6:00 a.m. to 5:00 p.m. Pacific Time.
- Electronic support for Visual Page for Windows owners at support_javawin@symantec.com and for Visual Page for Macintosh owners at support@devtools.symantec.com.

To order PremiumCare Gold or Platinum support, please contact Customer Service or your Symantec sales representative.

Electronic support

Technical information is available electronically 24 hours a day. Symantec maintains the Symantec forums on America Online.

America Online

To access the Symantec bulletin board on America Online, type keyword:

SYMANTEC

For additional information, or to subscribe in the United States and Canada, please call America Online at (800) 227-6364. Check with America Online for data communications settings.

Symantec discussion groups

Use your Web browser to go to <http://www.symantec.com> and go to the Service and Support section. Here you can review the Frequently Asked Questions, search the Symantec Knowledge Base for known solutions to problems previously encountered, or post your own query to a support newsgroup.

Symantec representatives are ready to answer your questions via our support discussion groups. All messages posted will receive a response from a Symantec representative within 48 hours. The discussion groups are

similar to electronic bulletin boards where you post a message and then return later to find an answer. These support forums are in Usenet newsgroup (Internet news) format and require that you have a newsreader available.

You can FTP directly to this site to download technical notes and software patches at: <ftp.symantec.com>. You can also use the news server, service.symantec.com.

Automated fax retrieval system

Symantec's automated fax retrieval system can be used 24 hours a day to receive product information on your fax machine. You can call from any touch tone phone to receive an index listing of both Technical Support and Customer Service documents available, then have any of these specific documents faxed to you.

To receive technical application notes and samples of "how tos," please call our Technical Support fax retrieval number, and choose Option 2.

You can receive general product information, data sheets, and product upgrade order forms from our Customer Service fax retrieval number.

- Technical Support: (541) 984-2490
- Customer Service: (800) 554-4403

In addition, you can receive a listing of Symantec offices and worldwide service and support partners by calling the Technical Support fax retrieval number, choosing Option 2, and requesting Document 1400.

Customer service

Symantec's Customer Service department builds and maintains long-lasting customer relations through consistent, expert service. Our Customer Service department is available to help you:

- Order an upgrade.
- Subscribe to the technical support solution of your choice.
- Fulfill your request for product literature or demonstration disks.
- Find out about dealers and consultants in your area.

- Replace missing or defective pieces (disks, manuals, and so on) from your package.
- Get status on an order or a return.
- Update your product registration with address or name changes.
- Replace lost passwords or user IDs.

You can reach Customer Service at (800) 441-7234 or under the Service and Support section at www.symantec.com. For specific questions about how to use your Symantec software, please contact Technical Support.

Replacing a CD-ROM

If the Visual Page CD-ROM is damaged or unusable, you can obtain a replacement.

To receive a replacement or refund for a product purchased through a reseller, please visit or contact the authorized dealer from whom you purchased the product.

If you ordered the product or upgrade directly from Symantec and wish to receive an replacement or refund in accordance with our 60-day money back guarantee, please return your CD-ROM and a letter including a brief explanation for the return. Please send by traceable means, such as UPS or FEDEX, to:

Symantec Corporation
ATTN: RMA Dept.
175 West Broadway
Eugene, OR 97401

Old version support

When a new version of this software is released, registered users may receive upgrade information through electronic mail or the postal service. After the release of the new version, telephone support will be provided for the previous version for 6 months. Technical information for the older versions may still be available on the electronic services and automated fax retrieval system.

Discontinued product support

When Symantec announces that a product will no longer be marketed or sold, telephone support will be discontinued 60 days later. Support will only be available for discontinued products through services such as our automated fax retrieval system or through documentation posted on electronic services such as the World Wide Web, Symantec BBS, or America Online.

Service and support headquarters

Symantec's service and support headquarters for North America is at the following location.

Symantec Corporation	(800) 441-7234 (USA & Canada Customer Service)
175 W. Broadway	(541) 334-6054 (all other locations)
Eugene, OR 97401	Fax (541) 984-8020

For Visual Page technical support, please call the following numbers:

StandardCare Support (541) 465-8470
PriorityCare 800 Support (800) 927-4014
PriorityCare 900 Support (900) 646-0004

or post a message in the Visual Page Discussion Group at
<http://www.symantec.com/techsupp/index.html>.

Worldwide service and support

Symantec provides technical support and customer service worldwide. Services vary by country and include International Partners (IPs) who represent Symantec in regions where there is no Symantec office. Most IPs provide customer service and technical support for Symantec products in your local language, as close to your home or office as possible.

If your country is not listed in the International Locations section below, please call our Technical Support automated fax retrieval service, located in

the United States, at (541) 984-2490, choose Option 2, and request Document 1400.

International locations

European headquarters

Symantec Europe Ltd.Tel. (31) (71) 535 3111
Kanaalpark 145Fax (31) (71) 535 3150
2321 JV Leiden
The Netherlands

Customer ServiceTel. (31) (71) 535 3294

Technical Support -DutchTel. (31) (71) 579 4407
French PC/MacTel. (33) (1) 41 38 69 80
French MacTel. (33) (1) 41 38 69 81
GermanTel. (49) (211) 9917 110
EnglishTel. (44) (1628) 788 580
Other CountriesTel. (31) (71) 579 4425
Fax (31) (71) 535 3153

International BBS (up to 14.4 baud)Tel. (31) (71) 535 3169
Automated fax retrieval (24 hrs.)Tel. (31) (71) 535 3255

Asia/Pacific Rim region

Symantec Australia Pty. Ltd.Tel. (61) (2) 9850 1000
408 Victoria RoadFax (61) (2) 9850 1001
Gladesville, NSW 2111
Australia

Technical SupportTel. (61) (2) 9879 6577
Fax (61) (2) 9879 6594
BBSTel. (61) (2) 9879 6322
Automated fax retrieval (24 hrs.)Tel. (61) (2) 9817 4550

Mexico

Symantec Mexico Tel. (52) (5) 545 1234
Rubén Darío No. 36, Piso 2, OFNA 6 Fax (52) (5) 531 2252
Colonia Chapultepec Polanco
11560 México, D.F.

Technical Support

For Technical Support call the
automated fax retrieval service,

located in the United States, at
(541) 984-2490, and request
Document 1400.

Japan

Symantec Japan, Inc.
Pine Bldg. 6F
3-1-2, Shibuya, Shibuya-ku
Tokyo 150 JAPAN
Phone: (81)03-3498-1118
Fax: (81)03-3498-1124

Every effort has been made to ensure the accuracy of this information.
However, the information contained herein is subject to change without
notice. Symantec Corporation reserves the right for such change without
prior notice.

Disk Replacement Form

After your 60-Day Limited Warranty, if your CD-ROM becomes unusable, fill out the Disk Exchange and Replacement Form and return 1) this form, 2) your damaged disks, and 3) your payment (see pricing below, add sales tax if applicable), to the address below to receive replacement disks. DURING THE 60-DAY LIMITED WARRANTY PERIOD, THIS SERVICE IS FREE. You must be a registered customer in order to receive disk replacements.

SECTION A - DISK EXCHANGE AND REPLACEMENT FORM

Name _____

Company Name _____

Street Address (No P.O. Boxes, Please) _____

City _____ State _____ Zip/Postal Code _____

Country* _____ Daytime Phone _____

Software Purchase Date _____

*This offer limited to U.S., Canada, and Mexico. Outside North America, contact your local Symantec office or distributor.

SECTION B - FOR DISK REPLACEMENT *ONLY*

Briefly describe the problem:

CD Replacement Price \$ 9.95
Sales Tax (See Table) _____
Shipping & Handling \$ 9.95
TOTAL DUE _____

SALES TAX TABLE: AZ (5%), CA (7.25%), CO (3%), CT (6%),
DC (5.75%), FL (6%), GA (4%), IA (5%), IL (6.25%), IN (5%),
KS (4.9%), LA (4%), MA (5%), MD (5%), ME (6%), MI
(6%), MN (6.5%), MO (4.225%), NC (6%), NJ (6%), NY (4%),
OH (5%), OK (4.5%), PA (6%), SC (5%), TN (6%), TX (6.25%),
VA (4.5%), WA (6.5%), WI (5%).

Please add local sales tax (as well as state sales tax) in AZ, CA, FL,
GA, MO, NY, OH, OK, SC, TN, TX, WA, WI

FORM OF PAYMENT ** (Check One):

Check (Payable to Symantec) Amount Enclosed \$ _____

Visa Mastercard American Express

Credit Card Number _____ Expires _____

Name on Card (please print) _____

Signature _____

****U.S. Dollars. Payment must be made in U.S. dollars drawn on a U.S. bank.**

MAIL YOUR DISK EXCHANGE AND/OR DISK REPLACEMENT ORDER TO:

Symantec Corporation
Attention: Order Processing
175 West Broadway
Eugene, OR 97401-3003

Please allow 2-3 weeks for delivery within the U.S.

Symantec is a registered trademark and Visual Page is a trademark of Symantec Corporation.
Other brands and products are trademarks of their respective holders.
© 1997 Symantec Corporation. All rights reserved. Printed in the U.S.A.

Glossary

anchor	A type of link , used to mark specific locations within a Web page .
applet	A Java program that is designed to run only on a Web page .
frame	The element within a frame layout that contains a HTML file.
frame set	A type of Web page , consisting of two or more independent sections (frames) that each display a HTML file.
FTP	An acronym for File Transfer Protocol. The File Transfer Protocol is the common command set used to upload and download files from Web sites . Visual Page uses FTP extensively as part of its set of Web publishing features.
GIF	An acronym for Graphic Interchange Format. The Graphic Interchange Format is a common cross-platform, format for Web graphics. Another common WWW graphic format is the JPEG format.
HTML	An acronym for HyperText Markup Language. It is used to “markup” or identify which parts of an .html or .htm text file to display in which format.
Internet	The largest computer network in the world. Originally designed for military use, the Internet expanded into academic usage, and then into the public arena.
Intranet	A subsection of the Internet , contained within a corporate network.
image map	A graphic with linkable regions within it. There are two types of image maps: client side, which contain their coordinate information within the graphic file, and server side, which contains its coordinate information in a separate .map file on the server.

Java	An object-oriented programming language developed by Sun Microsystems. Java is device independent, allowing compiled Java programs and applets to run on any computer.
JPEG	A acronym for Joint Photographic Experts Group, the creators of the JPEG file format. The JPEG format was developed for high-quality photographs and supports 24-bit images. Another common WWW graphic format is the GIF format.
link	Web page-based text or graphics that respond to a mouse click by displaying the media that they're connected to, such as a Web page.
local Web site	A collection of Web pages that are installed on your local computer.
server	A computer that is configured (via software and hardware) for the storage and handling of files.
target	The frame or Web page window that a linked file displays in.
URL	An acronym for Uniform Resource Locator. A specific address used by Web browsing software to locate and access information on the Web .
Web browser	The local application you use to connect to a Web server . It interprets and displays HTML-encoded documents (Web pages) graphically.
Web page	A text document which is encoded in HTML , displayed by a browser application, and accessible from remote sites via the Web .
Web server	A type of server dedicated to storing, transmitting, and receiving Web pages and Web-related files, such as GIF and JPEG graphics.
Web site	A collection of files that are linked to a central Web page, made available via the Web .

World Wide Web

The part of the **Internet** that contains **Web pages**. The World Wide Web is commonly referred to either by its acronym WWW, or simply as the Web.

