

## **Fee Collection**

Represents a fee collection box for use in a parking facility or other site. To resize proportionally, drag a corner selection handle. To change length or depth, drag a side selection handle. To reposition text, drag the control handle ■.

Note: Site Planning shapes are designed to work with an engineering scale. Base your drawing on a template, or set a custom scale using the File > Page Setup command.

## **Vehicle Barrier**

Represents a pole (or poles) used to prevent vehicles from driving on paths limited to bicycle and pedestrian access. To resize proportionally, drag any selection handle. To set the number of bollards (equally spaced), right-click the shape. To add text, select the shape, then type. To reposition text, drag the control handle ■.

Note: Site Planning shapes are designed to work with an engineering scale. Base your drawing on a template, or set a custom scale using the File > Page Setup command.

## **Parking Site Accessory**

To resize proportionally, drag a corner selection handle. To change length or depth, drag a side selection handle. Position the Disabled Sign on parking stalls/spaces and accessways. To add text, select the shape, then type. To reposition text, drag the control handle ■.

Note: Site Planning shapes are designed to work with an engineering scale. Base your drawing on a template, or set a custom scale using the File > Page Setup command.

## **Waste Disposal**

To resize proportionally, drag a corner selection handle. To change length or depth, drag a side selection handle. To add text, select the shape, then type. To reposition text, drag the control handle ■.

Note: Site Planning shapes are designed to work with an engineering scale. Base your drawing on a template, or set a custom scale using the File > Page Setup command.

## **Water and Surface Drainage**

To resize proportionally, drag a corner selection handle. The Manhole shape's aspect ratio is locked. For Catch Basin and Fire Hydrant: To change length or depth, drag a side selection handle. To add text, select the shape, then type. To reposition text, drag the control handle ■.

Note: Site Planning shapes are designed to work with an engineering scale. Base your drawing on a template, or set a custom scale using the File > Page Setup command.

## **Street Light**

Represents a street light in a parking facility. To resize proportionally, drag any selection handle. To add text, select the shape, then type. To reposition text, drag the control handle ■.


Note: Site Planning shapes are designed to work with an engineering scale. Base your drawing on a template, or set a custom scale using the File > Page Setup command.


## **Security**

Represents a security control area in a parking facility. To resize proportionally, drag a corner selection handle. To change length or depth, drag a side selection handle. To reposition text, drag the control handle ■.

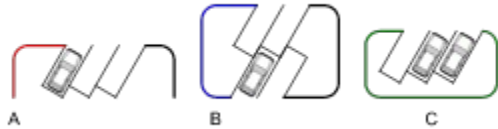
Note: Site Planning shapes are designed to work with an engineering scale. Base your drawing on a template, or set a custom scale using the File > Page Setup command.

## Attachable Parking Island

Glue an island to a parking space or parking strip to create a parking island for smooth traffic flow or landscaping area. Connect End Island 1 to lines by gluing its connection point  to a line connection point or endpoint. To change the radius of curvature, right-click the shape and choose Set Radius.

For End Island shapes: Glue control handles  to connection points on parking spaces. For Wrap-around Island shapes: To limit the extent to which the island protrudes on either end of the parking strip, drag the control handle at either end of the shape.

Note: Site Planning shapes are designed to work with an engineering scale. Base your drawing on a template, or set a custom scale using the File > Page Setup command.



- A End Island 1
- B End Island 2
- C Wrap-around Island



## Radial Parking Strip

A radial strip contains multiple parking spaces that follow a continuous radius curve (Radial Strip 1 up to 15 parking spaces, Radial Strip 2 up to 33). The number of spaces is determined by space width, strip angle, and sweep distance or extent of the bounding box. To show or hide text describing dimensions of the strip and spaces, and total number of spaces, right-click the shape.

When you drop the shape, Visio prompts for the space width, space length, and curve radius to apply to the strip. To set width, length, or curve radius at any other time, right-click the shape, then choose Set Space Properties. For Radial Strip 1, Spaces Inside/Outside creates spaces that are on the inside or outside of the strip's curve radius. To create the spanning angle for the parking strip within the site, drag the control handle ■.

Note: Site Planning shapes are designed to work with an engineering scale. Base your drawing on a template, or set a custom scale using the File > Page Setup command.

## **Single Parking Space**

Use a single parking space shape for spaces that are wider or narrower than others in the lot (disabled, motorcycle, or special purpose spaces). To show or hide dimension text for the space, right-click the shape.

When you drop the shape, Visio prompts for the width, length, and angle to apply to the space. To set width, length, or angle at any other time, right-click the shape, then choose Set Space Properties. To create a straight, non-angled parking space, set Space Angle to 90 degrees.

Note: Site Planning shapes are designed to work with an engineering scale. Base your drawing on a template, or set a custom scale using the File > Page Setup command.

## **Parking Site Accessory**

To resize proportionally, drag a corner selection handle. To change length or depth, drag a side selection handle. Position the Disabled Sign on parking spaces and accessways. To add text, select the shape, then type. To reposition text, drag the control handle ■.

**Note:** Site Planning shapes are designed to work with an engineering scale. Base your drawing on a template, or set a custom scale using the File > Page Setup command.

## **Linear Parking Strip**

Contains multiple parking spaces (Parking Strip 1 up to 15 spaces, Parking Strip 2 up to 30). The number of spaces is determined by the space width, angle, and extent of bounding box. To fit the approximate space for parking within the site, drag the width. To show or hide text describing dimensions of the strip and spaces, and total number of spaces, right-click the shape.

When you drop the shape, Visio prompts for the width, length, and angle to apply to all of the spaces. To set strip size and angle at any other time, right-click the shape, then choose Set Space Properties. To create straight (non-angled) parking spaces, set Space Angle to 90 degrees. Use the Tightly Enclose option to exactly fit spaces in the shape's alignment box.

Note: Site Planning shapes are designed to work with an engineering scale. Base your drawing on a template, or set a custom scale using the File > Page Setup command.

## **Single Parking Stall/Space**

Use a single parking stall/space shape for stalls/spaces that are wider or narrower than others in the lot (disabled, motorcycle, or special purpose stalls/spaces). To show or hide dimension text for the stall/space, right-click the shape.

When you drop the shape, Visio prompts for the width, length, and angle to apply to the stall/space. To set width, length, or angle at any other time, right-click the shape, then choose Set Stall/Space Properties. To create a straight, non-angled parking stall, set Stall/Space Angle to 90 degrees.

Note: Site Planning shapes are designed to work with an engineering scale. Base your drawing on a template, or set a custom scale using the File > Page Setup command.


## Radial Parking Strip

A radial strip contains multiple parking stalls/spaces that follow a continuous radius curve (Radial Strip 1 up to 15 parking stalls/spaces, Radial Strip 2 up to 33). The number of stalls/spaces is determined by stall/space width, strip angle, and sweep distance or extent of the bounding box. To show or hide text describing dimensions of the strip and stalls/spaces, and total number of stalls/spaces, right-click the shape.

When you drop the shape, Visio prompts for the stall/space width, stall/space length, and curve radius to apply to the strip. To set width, length, or curve radius at any other time, right-click the shape, then choose Set Stall/Space Properties. For Radial Strip 1, Stalls/Spaces Inside/Outside creates stalls/spaces that are on the inside or outside of the strip's curve radius. To create the spanning angle for the parking strip within the site, drag the control handle ■.

Note: Site Planning shapes are designed to work with an engineering scale. Base your drawing on a template, or set a custom scale using the File > Page Setup command.


## Parking Lane

Represents a parking strip or lane along a street, such as a loading zone outside a building. To make a shorter or longer lane, drag the width. To make a thinner or wider lane, drag the height. Connect the shape to other shapes by gluing its connection points  to connection points or endpoints on the other shapes. Use the connection points to attach other lines and create street outlines. Note: Site Planning shapes are designed to work with an engineering scale. Base your drawing on a template, or set a custom scale using the File > Page Setup command.

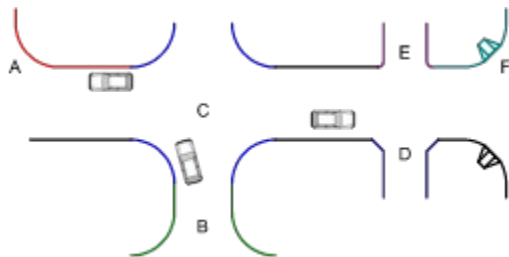


- A Parking Lane 1 glued to Curb with Ramp
- B Parking Lane 2 glued to Curb with Ramp

## Road/Curb/Driveway Curve

Represents curves associated with roads, curbs, driveways, or intersections. Connect the shape to other shapes by gluing its connection points  to connection points or endpoints on the other shapes. Use the connection points to attach other lines and create road outlines. To change the radius of curvature, right-click and choose Set Radius (except for Driveway beveled). For Driveway beveled: To change the bevel dimensions, right-click the shape and choose Set Bevel.


Note: Site Planning shapes are designed to work with an engineering scale. Base your drawing on a template, or set a custom scale using the File > Page Setup command.




- A Corner curb 1
- B Corner curb 2
- C Intersection
- D Driveway beveled
- E Driveway rounded
- F Curb with ramp

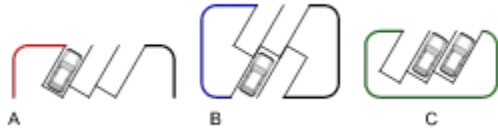


## Attachable Parking Island

Glue an island to a parking stall/space or parking strip to create a parking island for smooth traffic flow or landscaping area. Connect End Island 1 to lines by gluing its connection point  to a line connection point or endpoint. To change the radius of curvature, right-click the shape and choose Set Radius.

For End Island shapes: Glue control handles  to connection points on parking stalls/spaces. For Wrap-around Island shapes: To limit the extent to which the island protrudes on either end of the parking strip, drag the control handle at either end of the shape.

Note: Site Planning shapes are designed to work with an engineering scale. Base your drawing on a template, or set a custom scale using the File > Page Setup command.



- A End Island 1
- B End Island 2
- C Wrap-around Island

## Center Island

Represents parking islands in the middle of parking strips. To resize proportionally, drag a corner selection handle. To change length or width, drag a side selection handle. To change the radius of curvature, right-click the shape and choose Set Radius. For Center Island 1: Use the connection points at its open ends to attach other lines to form complete road outlines.

Note: Site Planning shapes are designed to work with an engineering scale. Base your drawing on a template, or set a custom scale using the File > Page Setup command.



- A Center Island 1
- B Center Island 2

### **Sidewalk (Footpath) Ramp**

Represents a ramp from curb to street to assist people using wheeled vehicles or devices. This shape is based on engineering standards and is locked against resizing.

Note: Site Planning shapes are designed to work with an engineering scale. Base your drawing on a template, or set a custom scale using the File > Page Setup command.

## **Linear Parking Strip**

Contains multiple parking stalls/spaces (Parking Strip 1 up to 15 stalls/spaces, Parking Strip 2 up to 30). The number of stalls/spaces is determined by the stall/space width, angle, and extent of bounding box. To fit the approximate space for parking within the site, drag the width. To show or hide text describing dimensions of the strip and stalls/spaces, and total number of stalls/spaces, right-click the shape. When you drop the shape, Visio prompts for the width, length, and angle to apply to all of the stalls/spaces. To set strip size and angle at any other time, right-click the shape, then choose Set Stall/Space Properties. To create straight (non-angled) parking stalls/spaces, set Stall/Space Angle to 90 degrees. Use the Tightly Enclose option to exactly fit stalls in the shape's alignment box.

Note: Site Planning shapes are designed to work with an engineering scale. Base your drawing on a template, or set a custom scale using the File > Page Setup command.



