

# DXF Export Filter (Plug-In EXPDXF)

## General

When exporting into a DXF file, some information gets lost. This is caused by several limitations in the DXF file format.

Definitions of line patterns, layers and blocks are retained. Though, due to the fact that names within a DXF file may only consist of very few characters, the names of these elements have to be modified so that they remain definite. For that reason line pattern names, layer names and block names may get postfix numbers if necessary.

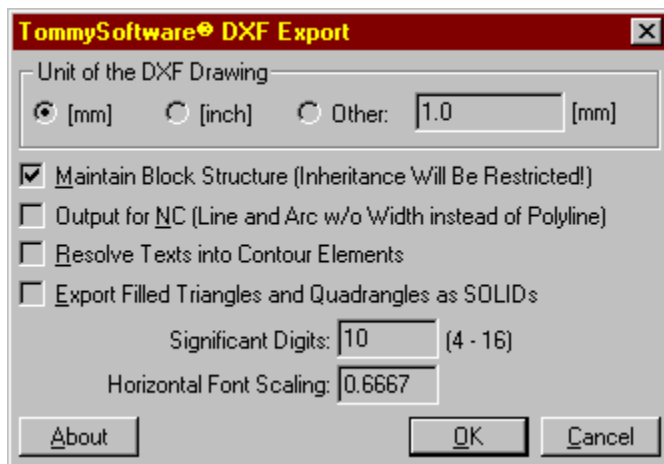
External references to symbols are only supported if the option "Maintain Block Structure" is not enabled.

As line patterns in DXF files can not be depending on the line width, those line patterns are calculated for a line width of 0.5 mm.

Fillings are ignored during conversion. If an object was only filled, but not framed, it will be framed in the file, though, to be visible.

## Options

How can I access information on this dialog?



**TOMMYSOFTWARE®**

[Please click here for our address](#)

Clicking on this button will close the dialog accepting all changes.

Clicking on this button will close the dialog, without accepting any changes.

Clicking on this button displays the help text for this dialog window.

If this radio box is selected, the DXF drawing will be created based on Millimeter unit.

If this radio box is selected, the DXF drawing will be created based on Inch unit.

If this radio box is selected, the DXF drawing will be created based on the unit given in the edit box in millimeters.

Enter here the custom unit in millimeters that the DXF drawing shall be based on.



If this check box is enabled, the structure of blocks, groups and instances will maintained during export. Since the DXF format uses another method of inheritance than TVG 4.0 does, some problems may occur. To avoid those, you have to clear the check box. All blocks and group will then be resolved during export. If a drawing contains external references, this check box must be cleared for export.

If this check box is enabled, no objects of type POLYLINE will be created. Instead, several single objects of type LINE or ARC will be created. These objects do not have a line width attribute! This is especially interesting for applications in the NC area, where line widths are not of interest.

If this check box is enabled, text will not be exported as such, but the outline of each characters will be exported as several contour elements. By this means, the positions and forms all any kind of text will be maintained precisely.

In versions before 4.12, the serving application will *always* resolve exported text into contour elements. Be sure to use to version 4.12 or later if you want to export plain text.

If this check box is enabled, filled triangles and quadrangles will be exported as object of type SOLID. Other surfaces, even if they are filled, will be exported as outlined POLYLINES. This is especially interesting for filled arrowheads in technical drawings.

Enter here the number of significant digits that the DXF export filter shall use for floating point output.

Enter here the horizontal scaling that shall be applied to all texts that are exported to the DXF drawing.  
This scaling does not apply if texts are resolved into contour elements.

Clicking on this button displays information about this filter.





