

# TOMMY SOFTWARE® Direct

- [Direct Entry](#)  
Editorial.
- [Power of Performance](#)  
TommySoftware® CAD/DRAW 4 Level 1.
- [Looking for More?](#)  
TommySoftware® CAD/DRAW 4 Level 2.
- [Plug Me In!](#)  
TommySoftware® Plug-Ins for CAD/DRAW 4.
- [Our Introduction for Upgraders](#)  
The Second Generation of TommySoftware® CAD/DRAW Classic.
- [When the Mouse Becomes a Pen](#)  
TommySoftware® CAD/DRAW 3.
- [Keep It on the Safe Side](#)  
TommySoftware® Email Protector secures the Internet.
- [Support](#)  
Direct problem solutions.
- [Fast and Professional](#)  
TommySoftware® Libraries for the practice-oriented CAD Workplace.
- [Everything's Got a Price](#)  
All our products at a glance.
- [Editorial Team](#)

# Direct Entry

Dear Reader,

This is the fourth edition of our magazine TommySoftware® Direct, which is going to bring you regular news from TommySoftware®.

This magazine is not aimed at computer experts who are only interested in technical details and memory capacity. When it comes to graphical applications or CAD, we have a different definition of experts: people who know what they are doing and which tools they need to do it more quickly. That's exactly what TommySoftware® Direct is all about.

We want to open new doors for your work. Our user interface, long praised by the computer press, opens up just like your familiar drawing environment. Pens, rulers and all your customized tools are available. You can use layers just like you do now.

Our job is to develop practical programs through a constant dialog with our users, that offer real improvements to make their work easier. If you have problems working with our software, members of our technical staff are waiting in the wings at our support center. Since they work directly with programmers during product development, they know the software inside and out and can help you with all your questions..

In this edition of TommySoftware® Direct, we want to introduce a new generation of TommySoftware® CAD/DRAW programs: TommySoftware® CAD/DRAW 4 Level 1 is our new product for Windows 95. It is dedicated to become the sucesor of TommySoftware® CAD/DRAW 2. TommySoftware® CAD/DRAW 4 Level 2 is the full featured professional version of our software.

As with all our products, we want this publication to serve your needs, and we want your feedback!

Very best regards,

Thomas Maier  
*President*

and the TommySoftware® Direct team.

P.S.: For our latest news, please visit our WWW site <http://www.tommysoftware.com>

# Power of Performance

**CAD/DRAW 4 Level 1 (32bit) - the first true 32 bit graphics application that is expandable and easy to use.**



TommySoftware® CAD/DRAW 4 Level 1 is the first true 32 bit graphics application that is expandable and easy to use. TommySoftware® CAD/DRAW 4 Level 1 is a full fledged graphics application that combines the advantages of powerful illustration packages with the precision of CAD products without their complicated interfaces.

## The New Release Features:

- CAD/DRAW Tour
- On-line guide
- Expandability through plug-ins
- True color bitmaps
- Bitmap objects in drawings
- Display on two screens
- Large scale printouts on multiple pages
- Improved Drag and Drop
- A real 32 bit application

"More and more customer learn that TommySoftware®s CAD/DRAW products offer a stunning price/performance. Through our research we have learned that most users are unhappy upgrading their software every few months. Expandability is a convenient and safe way out. Backed by our try-before-you-buy strategy every user can test drive the software for 30 days and will be convinced that this is the tool for easy yet powerful designing." said Thomas Maier, President of TommySoftware®, North America, Inc. "If you are not one of the big players in the market, then you have to create better applications that meet the needs of the user"

## Highlights:

- The new CAD/DRAW Tour (a self-running demo that shows all the program's basic features)
- CAD/DRAW Tutorial (contains a whole host of illustrated and detailed examples which will show you how to fully exploit the capabilities of the program)
- Revised and extended on-line reference (contains detailed descriptions of commands and procedures, lots of graphics, separated topic and contents window)
- Supports the right mouse button (popup menu) and long file names. Uses tabbed dialogs (property sheets), bitmap buttons, and tool tips.
- Highly customizable: You can define your own shortcuts and create your own toolbox. You can maximize the drawing area and use the floating menus for quick command selection
- There is a description with useful hints for every command in the Guide window
- Various drawing commands: lines, zigzag lines, polygons (triangles, rectangles, parallelograms, etc.), circles, circular arcs, ellipses, splines, Bézier curves, surfaces (consisting of lines, circular arcs, and Bézier curves), freehand lines, ...
- Numerous modification functions, for example property editing, moving, copying, rotating, distorting, aligning, etc. And a special modification command which allows live editing of objects.
- 20 coordinate systems which are used to store for example the scale, units, and the grid (display grid and position grid)
- Over 30 standard page formats (DIN/ISO), plus common American page formats
- A drawing can contain up to 500 layers which can be managed with a sophisticated new dialog

- Up to 500 pens with user-defined line patterns
- Trimming functions, chamfering and rounding functions
- A hatching function which allows you to automatically detect and hatch any area
- Dimensioning with automatic updating of measures
- Mathematical division of objects
- Intuitive object identification
- Numerous snap functions (intersection, center, corner, end-point, ...)
- Coordinate input via keyboard which allows you to specify explicit units and mathematical terms like for example  $4*\sqrt{2}$
- Bitmap objects which can be used like any other object (this includes moving, copying, scaling, etc.)
- Comprehensive library management functions (inserting blocks, editing blocks, and creating of new libraries)
- Text editor for TrueType and PostScript fonts
- Up to four view windows with different views
- Extremely high accuracy, up to 15 fractional digits
- Multi-level undo, up to 100 steps
- 20 levels of zoom-undo
- Optional multiuser-mode with personal settings
- Powerful programming interface (called Toso Interface - TommySoftware® Open Software Interface) that allows the integration of external plug-ins. These plug-ins can either be import filters, export filters, or command extensions in any form.
- The descriptions of the Toso Interface and TVG 4.2 file format are included.
- Besides its improved Drag and Drop functionality TommySoftware® CAD/DRAW 4 Level 1 also is fully compatible with all Windows 95 and Windows NT 4.0 compliant applications.

#### **Supported Exchange Formats:**

- T4G (TommySoftware® CAD/DRAW 4, a text format which can be edited in a text editor)
- MPG, TVG, T2G, T3G (previous versions of TommySoftware® CAD/DRAW)
- WMF (Windows Metafile, via file and Clipboard)
- EMF (Enhanced Windows Metafile, via file and Clipboard)
- DXF (AutoCAD®, AutoSketch® etc.)
- HPGL (Export only)
- PostScript® (Export only)
- BMP (Import only)


#### **Availability:**

TommySoftware® CAD/DRAW 4 Level 1 is a 30 day "try-before-you-buy" application that is available on our WWW site at <http://www.tommysoftware.com>, section "Download". If you would rather be sent a CD-ROM instead of downloading, please call us.

TommySoftware® products are only directly available from TommySoftware®, North America, Inc. or from one of its dedicated international partners.

#### **System Requirements:**

- Intel 80486 or higher processor
- 8 MB (Windows 95) or 16 MB (Windows NT 4.0) RAM
- 20-30 MB hard disk space
- Windows 95 or Windows NT 4.0
- CD-ROM drive (if purchased on CD-ROM)
- A mouse

 Graphics card supporting 640 x 480 pixels and 256 colors

# Looking for More?

**CAD/DRAW 4 Level 2 (32bit) - The first true 32 bit CAD application that works with a pen based concept.**



TommySoftware® CAD/DRAW 4 Level 2 is a full featured CAD application made in Germany. It was developed as a pen-based system, making it easy for designers to make the transition from paper to the screen. The application combines the European standards (DIN) and the US standards (ISO) for computer aided design. It also features a rich set of graphical features not typically found in CAD applications and only found in some graphical products, thus allowing the user to benefit from the ease of use of those user interfaces.

## The New Release Features:

- CAD/DRAW Tour
- On-line guide
- Expandability through plug-ins
- True color bitmaps
- Bitmap objects in drawings
- Display on two screens
- Large scale printouts on multiple pages
- Improved Drag and Drop
- A real 32 bit application

"TommySoftware® CAD/DRAW 4 Level 2 is a work horse. Users will appreciate its rich set of features, its speed and its reliability. TommySoftware® CAD/DRAW 4 Level 2 is a direct attack on over priced, slow applications like Autocad LT 2, etc. which it is by far superior to in almost all aspects." says Thomas Maier, President of TommySoftware®, North America, Inc. "Using TommySoftware® CAD/DRAW 4 Level 2 is very much like driving a German car: It is reliable, comfortable and a pleasure to own."

## Highlights:

- The new CAD/DRAW Tour (a self-running demo that shows all the program's basic features)
- CAD/DRAW Tutorial (contains a whole host of illustrated and detailed examples which will show you how to fully exploit the capabilities of the program)
- Revised and extended on-line reference (contains detailed descriptions of commands and procedures, lots of graphics, separated topic and contents window)
- Supports the right mouse button (popup menu) and long file names. Uses tabbed dialogs (property sheets), bitmap buttons, and tool tips.
- Highly customizable: You can define your own shortcuts and create your own toolbox. You can maximize the drawing area and use the floating menus for quick command selection
- There is a description with useful hints for every command in the Guide window
- Digitizer support: Any digitizer that comes with a WINTAB driver (and most digitizers on the market do) is supported. Not only as a mouse replacement, but also for high-precision digitizing of any template, and for fast command selection on the digitizer. The command assignments of the digitizer are fully customizable.
- Various drawing commands: lines, zigzag lines, polygons (triangles, rectangles, parallelograms, etc.), circles, circular arcs, ellipses, splines, Bézier curves, surfaces (consisting of lines, circular arcs, and Bézier curves), freehand lines, ...
- Numerous modification functions, for example property editing, moving, copying, rotating, distorting, aligning, etc. And a special modification command which allows live editing of objects.

- 20 coordinate systems which are used to store for example the scale, units, and the grid (display grid and position grid)
- Over 30 standard page formats (DIN/ISO), plus common American page formats
- A drawing can contain up to 500 layers which can be managed with a sophisticated new dialog
- Extended layer management
- Up to 500 pens with user-defined line patterns
- Geometry functions
- Trimming functions, chamfering and rounding functions
- A hatching function which allows you to automatically detect and hatch any area
- Dimensioning with automatic updating of measures
- Calculation of areas and perimeters
- Mathematical division of objects
- Intuitive object identification
- Numerous snap functions (intersection, center, corner, end-point, ...)
- Coordinate input via keyboard which allows you to specify explicit units and mathematical terms like for example  $4*\sqrt{2}$
- Bitmap objects which can be used like any other object (this includes moving, copying, scaling, etc.)
- Comprehensive library management functions (inserting blocks, editing blocks, and creating of new libraries)
- Parts list management
- Position numbers
- Reference texts
- Surface clipping
- Text editor for TrueType and PostScript fonts
- Up to four view windows with different views
- Extremely high accuracy, up to 15 fractional digits
- Multi-level undo, up to 100 steps
- 20 levels of zoom-undo
- Optional multiuser-mode with personal settings
- Comments in drawings
- Powerful programming interface (called Toso Interface - TommySoftware® Open Software Interface) that allows the integration of external plug-ins. These plug-ins can either be import filters, export filters, or command extensions in any form.
- The descriptions of the Toso Interface and TVG 4.2 file format are included.
- Besides its improved Drag and Drop functionality TommySoftware® CAD/DRAW 4 Level 2 also is fully compatible with all Windows 95 and Windows NT 4.0 compliant applications.

#### **Supported Exchange Formats:**

- T4G (TommySoftware® CAD/DRAW 4, a text format which can be edited in a text editor)
- MPG, TVG, T2G, T3G (previous versions of TommySoftware® CAD/DRAW)
- WMF (Windows Metafile, via file and Clipboard)
- EMF (Enhanced Windows Metafile, via file and Clipboard)
- DXF (AutoCAD®, AutoSketch® etc.)
- HPGL (Export only)
- PostScript® (Export only)
- BMP (Import and export)

#### **Availability:**

TommySoftware® CAD/DRAW 4 Level 1 is a 30 day "try-before-you-buy" application that is available on our WWW site at <http://www.tommysoftware.com>, section "Download". If you would rather

be sent a CD-ROM instead of downloading, please call us.

TommySoftware® products are only directly available from TommySoftware®, North America, Inc. or from one of its dedicated international partners.

**System Requirements:**

- Intel 80486 or higher processor
- 8 MB (Windows 95) or 16 MB (Windows NT 4.0) RAM
- 20-30 MB hard disk space
- Windows 95 or Windows NT 4.0
- CD-ROM drive (if purchased on CD-ROM)
- A mouse
- Graphics card supporting 640 x 480 pixels and 256 colors



# Plug Me In!

**Plug-Ins - the fast and inexpensive way to get your very personal TommySoftware® CAD/DRAW 4 edition.**



Several plug-ins for TommySoftware® CAD/DRAW 4 are available. These extend the application by a single or multiple functions. By this means, you can assemble a program that offers exactly the functionality you required - and nothing more.

The basis of such a program is always a full version of TommySoftware® CAD/DRAW 4 Level 1 or Level 2. To extend it, simply install the desired plug-in, start CAD/DRAW 4 and enter the plug-in's unlock code. That's all!

The plug-in links itself into the normal menu structure of CAD/DRAW 4. Each command of a plug-in is like a standard application command. You can select it using the keyboard, the popup menu, the toolbox window, and even (in Level 2) using a digitizer.

## **Availability:**

All plug-ins for CAD/DRAW 4 can be purchased at our WWW site at <http://www.tommysoftware.com>, section "Sales". For information on currently available plug-ins, visit the "Plug-Ins" section.

TommySoftware® products are only directly available from TommySoftware®, North America, Inc. or from one of its dedicated international partners.

## **System Requirements:**

- TommySoftware® CAD/DRAW 4 Level 1 or Level 2
- 1-5 MB hard disk space (depending on the plug-in)

# Our Introduction for Upgraders

Test TommySoftware® CAD/DRAW 2 (16bit) for 30 days.



Our shareware product, TommySoftware® CAD/DRAW 2 is now available. Fulfilling your expectations of a CAD shareware product is just the beginning for us. We want to set new standards! TommySoftware® has updated this Windows classic with a whole new set of drawing, construction, and illustration functions.

Try TommySoftware® CAD/DRAW 2 for 30 days. After you discover how indispensable it is, then make sure to register to get the benefit of all our services. To register, simply print the registration form from the Help menu and send it to us. In return, you will receive the full CAD/DRAW 2 package.

## Highlights:

- Context sensitive help system
- Supports the right mouse button (popup menu).
- Highly customizable: You can define your own shortcuts and create your own popup menu.
- Complete drawing functions (lines, polygons, polyeders, circles, circular arcs, ellipses, elliptical arcs, splines, Bézier curves, freeform surfaces, freehand lines, ...)
- Numerous manipulation commands (move, copy, rotate, scale, reflect, trim, round, chamfer, freeze, melt, moving of single end-points and corner-points, ...)
- Mathematical division of objects
- Half-associative dimensioning and dimension lines
- Library management functions (inserting blocks, editing blocks, and creating of new libraries)
- 256 drawing layers
- Freely configurable hatchings
- Single-line and multi-line text editor using vector fonts following DIN/ISO
- 13 page sizes to DIN/ISO, plus common American page sizes
- Support of isometrical and dimetrical drawing
- Extremely high accuracy, up to 15 fractional digits
- Selectable length and angle units (metric, English, degree, radiant, ...)
- Undo function
- Display of PCX pixel images in the background

## Supported File Formats:

- MPG, TVG (TommySoftware® CAD/DRAW 1 and 2)
- Windows Metafile (via the Clipboard)
- DXF (AutoCAD®, AutoSketch® etc.)
- PostScript® (Export only)
- HPGL (Export only)

## Availability:

TommySoftware® CAD/DRAW 2 is a 30 day "try-before-you-buy" application that is available on our WWW site at <http://www.tommysoftware.com>, section "Download". If you would rather be sent a CD-ROM instead of downloading, please call us.

TommySoftware® products are only directly available from TommySoftware®, North America, Inc. or from one of its dedicated international partners.

**System Requirements:**

- Intel 80286 or higher processor
- 4 MB RAM
- 10 MB hard disk space
- Windows 3.1, Windows 95 or Windows NT
- A mouse
- Graphics card supporting 640 x 480 pixels and 16 colors

**Short Clips From the Press****From Computer-Aided Engineering, 5/95:**

"Although Windows tends to be a slow environment for CAD, CAD/DRAW is faster than any of the programs we've seen so far. The program is not fast because it's simpler or a "stripped down" version of something more complex. Something is obviously different in the way it was programmed. (...) Super Windows implementation!"

# When the Mouse Becomes a Pen

TommySoftware® CAD/DRAW 3 (16 bit) - the ultimate illustration program



TommySoftware CAD/DRAW 3 is a complete CAD and illustration program with all the capabilities of a high-end drawing program at a fraction of the cost. It is an ideal supplement to an office suite or other business application and enables even novice users a quick start. Anyone who wants to create technical illustrations and graphics quickly and precisely will come to value its rich assortment of features.

CAD/DRAW 3 is the ideal program to create graphics for a presentation or for making a draft of a technical drawing. Graphics designers will like CAD/DRAW 3's speed and simplicity. Draftsmen will recognize the value of its very powerful drawing and manipulative functions. Anyone who has to do drawings now and then will notice above all how easy it is to use.

Extensive on-line help offers detailed explanations and graphics for each individual command. It displays the table of contents and the text in two separate on-screen windows so that you can spring from clicking the mouse in the contents window to the detailed description. To help orientation, the program shows the current drawing coordinates in a status window.

## Highlights:

- CAD/DRAW Tutorial (contains a whole host of illustrated and detailed examples which will show you how to fully exploit the capabilities of the program)
- Comprehensive on-line reference (contains detailed descriptions of commands and procedures, lots of graphics, separated topic and contents window)
- Supports the right mouse button (popup menu)
- Highly customizable: You can define your own shortcuts and create your own toolbox. You can maximize the drawing area and use the floating menus for quick command selection.
- Complete drawing commands (lines, zigzag lines, polygons, regular polygons, circles, circle parts, ellipses, ellipse parts, splines, Bézier curves, free shapes, freehand lines, ...)
- Complete manipulation functions (move, copy, rotate, distort, trim, ...)
- Intuitive object identification
- Numerous snap functions (intersection, center, corner, end-point, ...)
- Coordinate input via keyboard which allows you to specify explicit units and mathematical terms like for example  $4*\sqrt{2}$
- Half-associative dimensioning and dimension lines
- Area and perimeter calculation
- Mathematical division of objects
- Area combination according to group theory (union, intersection, difference)
- Construction geometry with markings, straight lines and circles
- Comments inside the drawing
- 40 pens with user-defined line patterns
- 300 drawing layers
- Over 30 page sizes to DIN/ISO, plus common American page sizes
- Independent display grid and position grid
- Support of isometrical and dimetrical drawing
- Comprehensive library management functions (inserting blocks, editing blocks, and creating of new libraries)
- Text editor for TrueType and PostScript fonts
- Up to four view windows with different views

- Extremely high accuracy, up to 15 fractional digits
- Multi-level undo, up to 100 steps
- 20 levels of zoom-undo
- Optional multiuser-mode with personal settings

**Supported Exchange Formats:**

- T3G (TommySoftware® CAD/DRAW 3)
- MPG, TVG, T2G (previous versions of TommySoftware® CAD/DRAW)
- WMF (Windows Metafile, via file and Clipboard)
- DXF (AutoCAD®, AutoSketch® etc.)
- HPGL (Export only)
- PostScript® (Export only)
- BMP (Import as "background layer", Export)

**Availability:**

TommySoftware® CAD/DRAW 3 is a 30 day "try-before-you-buy" application that is available on our WWW site at <http://www.tommysoftware.com>, section "Download". If you would rather be sent a CD-ROM instead of downloading, please call us.

TommySoftware® products are only directly available from TommySoftware®, North America, Inc. or from one of its dedicated international partners.

**System Requirements:**

- Intel 80386 or higher processor
- 8 MB RAM
- 15 MB hard disk space
- Windows 3.1, Windows 95 or Windows NT
- CD-ROM drive (if purchased on CD-ROM)
- A mouse
- Graphics card supporting 640 x 480 pixels and 16 colors

# Keep It on the Safe Side

TommySoftware® Email Protector secures the Internet.



TommySoftware® Email Protector is an easy to use but yet efficient Internet tool for everyone who sends e-mails or files across the Internet.

Email Protector's main purpose is to make your communication via the Internet safe by encrypting your e-mails. The encryption prevents eavesdropping as well as the manipulation of the original e-mail text.

To encrypt an e-mail with Email Protector first write the e-mail with your favorite e-mail editor. Then select the complete text of the e-mail and copy it to the clipboard (CTRL C). Afterwards click the "Encode Text in Clipboard" button in the Email Protector window. Email Protector then encrypts the text in the clipboard using the specified password (click the "Options" button to change the password). Finally paste the encrypted text back into your e-mail editor (CTRL V) and delete the original e-mail text. Then send your (now encrypted) e-mail as usual.

The receiver of your encrypted e-mail uses Email Protector in the same way to decrypt the e-mail (of course the receiver must know the password).

The main advantage of Email Protector is that everything is done via clipboard. This allows you to use Email Protector with every e-mail editor available for Windows 95/NT. And Email Protector also makes you independent from special (incompatible) encryption technologies of different Internet service providers. Email Protector allows safe communication between all users of the Internet.

## Highlights:

- Email Protector encrypts and decrypts your e-mails "on the fly".
- This procedure is independent from the Web browser or e-mail editor you use and it's also independent from your Internet service provider. So Email Protector enables you to exchange secured e-mails with your friends, colleagues, and customers right away no matter whether they have the same Internet service provider or use the same software.
- The encryption technology which is used by Email Protector is based on an industry standard allowing you to use passwords with up to 63 characters. This makes it virtually impossible to crack an encrypted e-mail. Therefore it's also impossible to change the content of an encrypted e-mail.
- All e-mails processed with Email Protector are automatically compressed. So using Email Protector not only improves safety but also speeds up your e-mail transfer across the Internet.
- A new encoding and decoding procedure automatically retains all special characters (e.g. à, á, â, ã, ä, æ) contained in your e-mail.
- You can also use Email Protector to convert binary files, e.g. executable files (\*.EXE) or documents (\*.DOC), to one or several text files which then can be sent across the Internet as standard e-mail. Of course this process includes the (optional) encryption and compression of all data. The receiver of such an e-mail then uses Email Protector to restore the original binary file.
- If a virus has attacked the file a warning will be issued by the software.
- In addition to its Internet features Email Protector allows you to compress and extract files using the standard ZIP format. This enables you to read ZIP files created by utilities also using the standard ZIP format. You can compress single files and complete directories. Long file names and encryption are also supported.
- Optionally you can use the two 32-bit console applications TommySoftware® TSZIP and TommySoftware® TSUNZIP which are used by Email Protector to do the compression and extraction in

separate batch file operations.

**Availability:**

TommySoftware® Email Protector is a "try-before-you-buy" application that is available on our WWW site at <http://www.tommysoftware.com> , section "Download". If you would rather be sent a CD-ROM instead of downloading, please call us.

TommySoftware® products are only directly available from TommySoftware®, North America, Inc. or from one of its dedicated international partners.

**System Requirements:**

- Intel 80486 or higher processor
- 8 MB (Windows 95) or 16 MB (Windows NT 4.0) RAM
- 2 MB hard disk space
- Windows 95 or Windows NT 4.0
- CD-ROM drive (if purchased on CD-ROM)
- A mouse
- Graphics card supporting 640 x 480 pixels and 256 colors

# Support

## World Wide Web (WWW)



TommySoftware® maintains its own WWW server at <http://www.tommysoftware.com> that offers the latest information, products and updates.

If you have technical questions to TommySoftware®, please send an email to [support@tommysoftware.com](mailto:support@tommysoftware.com). For business questions, please send you email to [sales@tommysoftware.com](mailto:sales@tommysoftware.com).

## PowerTraining



TommySoftware® offers training courses on all TommySoftware® CAD and graphic software, whether for beginners or advanced users. The TommySoftware® trainers that were involved in the applications' development will introduce you at your place (inhouse trainings for several employees of your company) to everything you need to know.

To enable you to get to know a powerful CAD package like TommySoftware® CAD/DRAW in the most effective and efficient way (whether you are a first time user of this package, have acquired an update or alternatively a power user familiar with its entirety), TommySoftware® offers you in-house training in connection with experienced software tutors. We enable you to learn your TommySoftware® product in the shortest possible time and support you in gaining an in-depth knowledge of how your ideas can be easily transferred into a technical drawing with the help of our CAD system.

Our specialists with their many years of training experience come to your workplace and train you on the computers you are familiar with. As well as a general introduction of the way your TommySoftware® product works we also include dealing with your own specific daily tasks in the training. We aim to give you solutions to your challenges not just convey the basics of the package. The transition between learning and production can be achieved without downtime because the participants can employ the skills they have learnt straight away.

Our tutors work directly with the TommySoftware® development department so you will obtain the most up to date information. Your suggestions are taken directly from the training to the development department to enable us to enhance our program development for the future.

### **The advantages of TommySoftware® training are obvious:**

- The contents of the training are personally designed and adapted to the needs of your company. The resulting level of knowledge of the participants guarantees high effectivity/productivity
- Small training groups have extensive individual support
- Loss of productivity, overtime, out of house training difficulties on new equipment, travel and expense costs are eliminated
- Your CAD system will be optimally configured and set up as part of the training
- As a result the CAD system is operational immediately to meet the objectives and goals your company wants to achieve

### **We offer trainings for the following TommySoftware® products:**

- CAD/DRAW 2



- CAD/DRAW 3
- CAD/DRAW 4 Level 1
- CAD/DRAW 4 Level 2

Training can be from 1 to 5 days depending on your requirements. Additional days can be requested to either refresh the employees or to give specific training in solving new difficulties. These training can either be in English or German, please specify which best meets your requirements when corresponding with our tutors.

The costs for our in-house seminars are independent of the number of participants, and the type of program you have, they are costed on a per day basis. We recommend a maximum of eight participants and to be most beneficial there should be no more than 2 persons per computer.

For further information on trainings and the current prices, please call our office in San Francisco, or visit the "Support" section of our WWW site at <http://www.tommysoftware.com>.

# Fast and Professional

## Libraries



To make using TommySoftware® programs even more effective, we offer a large number of comprehensive symbol libraries. You can paste individual elements from the library onto the clipboard and use them directly in your drawings. This saves a great deal of time and effort, a feature highly valued by experts.

Libraries are available for the following areas. They can be used in any TommySoftware® program:

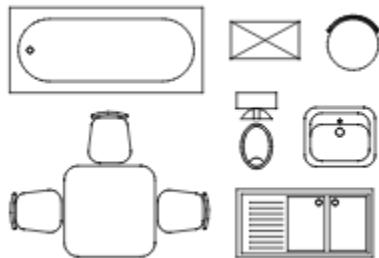
- Electrical engineering
- Electronics
- Electrical installation
- Environmental technology
- Steel profiles
- Process engineering
- Valves
- Heating and ventilation
- Landscaping
- Pneumatics
- Laboratory equipment
- Hydraulics
- Interior design

Here are examples from some of the libraries:

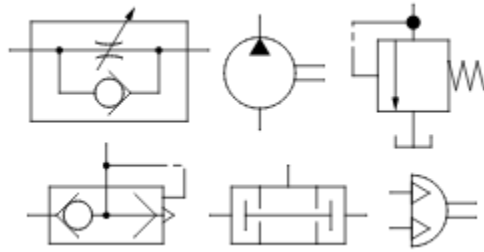
*Chemical laboratory equipment:*



*Interior design:*



*Hydraulics and pneumatics:*

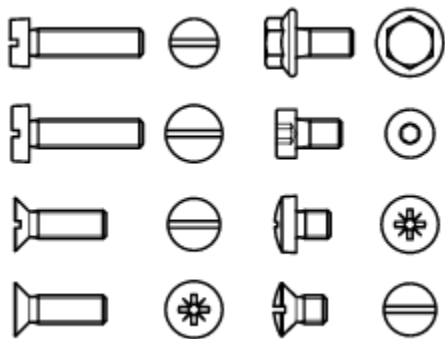


In addition we offer extra, especially comprehensive libraries for TommySoftware® CAD/DRAW 3 and CAD/DRAW 4 covering the following areas:

- Screws
- Nuts
- Steel profiles

Examples:

*Screws:*



*Profiles:*



A complete overview of the contents of all available libraries can be found in our library catalog in the file CATALOG.HLP, included with all full versions. In general, it can be reached after installation by double-clicking on the icon labeled "Libraries".

# Price List

Prices for the U.S.A. (prices for other countries may vary):

Product	Price in US\$	TYPE
<b>TommySoftware® CAD/DRAW 4 Level 1 for Windows 95 / NT 4.0</b>		
TommySoftware® CAD/DRAW 4 Level 1	79.95	FP
TommySoftware® CAD/DRAW 4 Level 1 Upgrade from all TommySoftware® applications for Windows	59.95	UP
TommySoftware® CAD/DRAW 4 Level 1 Multiuser (5)	299.95	FP
TommySoftware® CAD/DRAW 4 Level 1 Server License	3,997.95	FP
TommySoftware® CAD/DRAW 4 Level 1 Educational License	69.95	EDU *
TommySoftware® CAD/DRAW 4 Level 1 "1+9"	349.95	1+9 *
<b>TommySoftware® CAD/DRAW 4 Level 2 for Windows 95 / NT 4.0</b>		
TommySoftware® CAD/DRAW 4 Level 2	299.95	FP
TommySoftware® CAD/DRAW 4 Level 2 Upgrade from all TommySoftware® applications for Windows	249.95	UP
TommySoftware® CAD/DRAW 4 Level 2 Multiuser (5)	1,199.95	FP
TommySoftware® CAD/DRAW 4 Level 2 Server License	12,799.95	FP
TommySoftware® CAD/DRAW 4 Level 2 Educational License	129.95	EDU *
TommySoftware® CAD/DRAW 4 Level 2 "1+9"	599.95	1+9 *
<b>TommySoftware® CAD/DRAW 3 for Windows 3.1</b>		
TommySoftware® CAD/DRAW 3	129.95	FP
TommySoftware® CAD/DRAW 3 Upgrade from TommySoftware® CAD/DRAW 1 and 2	99.95	UP
TommySoftware® CAD/DRAW 3 Educational License	79.95	EDU *
TommySoftware® CAD/DRAW 3 "1+9"	349.95	1+9 *
<b>TommySoftware® CAD/DRAW 2 for Windows 3.1</b>		
TommySoftware® CAD/DRAW 2	59.95	FP
TommySoftware® CAD/DRAW 2 Upgrade from TommySoftware® CAD/DRAW 1	29.95	UP
TommySoftware® CAD/DRAW 2 Educational License	49.95	EDU *
TommySoftware® CAD/DRAW 2 "1+9"	299.95	1+9 *
<b>TommySoftware® Libraries (for all applications)</b>		
Library 101: Electrical Engineering #1	29.95	
Library 102: Electronics #1	29.95	
Library 103: Electrical Installation	29.95	
Library 104: Digital Information Processing	29.95	
Library 105: Process Engineering	29.95	
Library 106: Valves	29.95	
Library 108: Heating	29.95	
Library 110: Chemistry Laboratory Equipment #1	29.95	
Library 111: Chemistry Laboratory Equipment #2	29.95	
Library 112: Chemistry Laboratory Equipment #3	29.95	
Library 114: Interior Design - Kitchen/Bathroom	29.95	
Library 115: Interior Design - Furniture	29.95	
Library 117: Mechanical Engineering - Hydraulics/Pneumatics	29.95	
Library 118: Environment & Ecology	29.95	

Library 119: Landscape Design	29.95
Library 120: Electrical Engineering #2	29.95
Library 121: Mechanical Engineering - Steel Section	29.95

**TommySoftware® Libraries** (for CAD/DRAW 3 and CAD/DRAW 4)

Library 301: Screws	79.95
Library 302: Nuts	79.95
Library 303: Profiles	79.95

**TommySoftware® Plug-Ins** (for CAD/DRAW 4)

Plug-In "Lettering" (TSTEXT1)	49.95
Plug-In "Dimension" (TSDIM1)	49.95
Plug-In "Draw" (TSDIM1)	49.95
Plug-In "Texture / Gradient Fill" (TSFILL1)	49.95
Plug-In "Function Plotter" (TSFUNC1)	79.95
Plug-In "Zoom" (TSZOOM1)	29.95
Plug-In "HP-GL/2 Export" (EXPHPGL)	49.95
Plug-In "CAM" (DW_CAM1)	79.95

**Further Add-Ons** (for CAD/DRAW 3 and CAD/DRAW 4)

FF-ISO standard Truetype font	69.95
-------------------------------	-------

**Miscellaneous**

TommySoftware CD (single, incl. shipping)	19.95
TommySoftware CD (2 year subscription, 4 issues, incl. shipping)	69.95
TommySoftware Club (1 year membership + 2 issues of the CD)	499.00

Valid from May 1997. All prices excluding tax. CA residents: please add appropriate sales tax. The prices shown are suggested retail prices. No liability for errors and alterations.

**Symbols:**

- \* Include proof of status when ordering (student ID, student registration or similar)
- 1+9 1 full version and 9 educational licenses
- FP full product
- UP upgrade
- EDU educational license

# Editorial Team

## Publisher:

- Thomas Maier

## Editorial & Layout:

- Stefan Malz
- Olaf Kassner

## Freelance Contributors:

- Timo Bierbaum
- Martin Haupt
- Stefan Hensel

## Liability:

Although we take every possible care, we cannot take any liability for the accuracy of any part of this publication. MEGAPAIN<sup>®</sup> is a registered trademark of TommySoftware<sup>®</sup>. AutoCAD<sup>®</sup> is a registered trademark of Autodesk. All brand names are trademarks or registered trademarks of their respective owners. TommySoftware<sup>®</sup> is an equal opportunities employer. Prices may change without notice.

TommySoftware<sup>®</sup> Direct is published by TommySoftware<sup>®</sup>, N.A. Inc., San Francisco.



### North America, Inc.

1843 10th Avenue  
San Francisco, CA 94122  
U. S. A.

Phone (415) 566 6118  
Fax (415) 566 6589

### Internet

[sales@tommysoftware.com](mailto:sales@tommysoftware.com) (Sales)  
[support@tommysoftware.com](mailto:support@tommysoftware.com) (Technical Support)  
<http://www.tommysoftware.com> (World Wide Web)

### Germany

Selchower Straße 32  
D-12049 Berlin  
Germany

Phone +49 30 621 5931  
Fax +49 30 621 4064

