








**What is ALP (Account, Login, Password)**

ALP is a program to make life easier for the user to store and access personal security information. In today's world, the average user has about 20 to 30 passwords to remember. When the human mind does not use these passwords on a daily bases they become harder to remember and use. The program is very small (about 32k-bytes). Memory conservation on the Palm PDA is very important to most users. This is why ALP only holds the essential information required to assist in recalling security information.

**How to Register ALP: Access the menu bar of ALP by "tapping" the lower left silk screen button of the PDA Graffiti area**


<p>1.</p>  <p>Tap on "Options" then "Register ALP".</p>	<p>2.</p>  <p>Enter your registration code. Exactly as it was sent to you by Denton Software Group.</p>	<p>3.</p>  <p>If successful, you will see this screen.</p>	<p>3.a</p>  <p>If code does not work, contact Denton Software Group. Make sure your Sync ID exactly matches the one on the registration screen.</p>
---	--	--	--

**How to Register the ALP Conduit: Access the menu bar of ALP by "tapping" the lower left silk screen button of the PDA Graffiti area**

<p>1.</p>  <p>Tap on "Options" then "Register ALP Conduit".</p>	<p>2.</p>  <p>Enter your registration code. Exactly as it was sent to you by Cognisense.</p>	<p>3.</p>  <p>If successful or not, you will see this screen.</p>	<p>If code does not work and you have attempted to register at least twice, contact Cognisense. Make sure your Sync ID exactly matches the one on the registration screen.</p> <p><b>You will always be given another opportunity to register the conduit after a Hot Sync if the code fails.</b></p> <p><b>The ALP Conduit must be loaded and working in your Hot Sync computer for verification.</b></p>
---	---	---	--

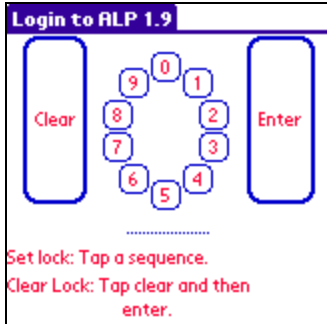
## Set the Pad Lock

1.



Tap on Edit from the Menu bar. Then tap on “Set Lock”.


2.



Enter a sequence that only you will know and tap “Enter”. You will be asked for this sequence every time ALP is started.


## Set Quick I, II, III keys

1.



Go to record you wish to have quick cut key set to. Tap on “Options” from the menu bar. Select the button you want to set the record to.

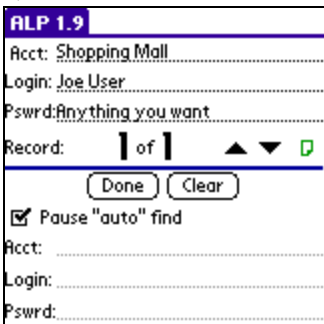
2.



This screen will appear confirming that the quick cut button has been set.  
\*Note: Quick cut settings may be lost after performing an upgrade

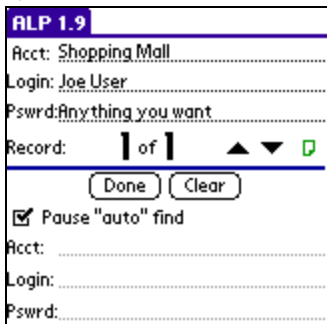
## Using Find

1.



Tap on the “Find” button.

2.



Start to graffiti in field(s) of choice. Un-check the “auto find” if you want ALP to Look for accounts as you write.

3.

Auto Find not checked:  
ALP will start looking for a match as soon as you start to fill in the fields. If no match is found, ALP will sit at the end of the account list until you modify the data request.

Auto Find checked:  
Uncheck the “auto find” to start looking for accounts.

## Account List Jump

1.

Open listing window by tapping on the “Account List” button or the indented word Acct: at top of screen.

2.

Begin to graffiti in the account you are looking for.

3.

To find exactly what you want, it may take at least two characters to be written into the field. Like this example looking for the “zippy hamster” account. The user had to graffiti in the characters “z”. ALP was able to find the unique information and page to it. The listing window works in pages, displaying 7 accounts at one time.

## Notes for ALP 1.9

1.

Tap on the icon that looks like an empty letter. Located above the top right corner of the “Account List” button.

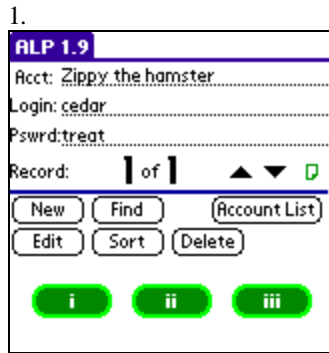
2.

Enter a note for the account that was shown on the previous screen. Tap “Save” when finished. You may enter about two or three lines (60 characters) of text.

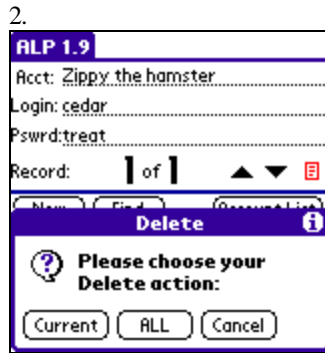
3.

Icon will change when note data has been saved.

**Delete for ALP 1.9**



Tap on the Delete button.



To delete the current account showing, Tap on "Current".

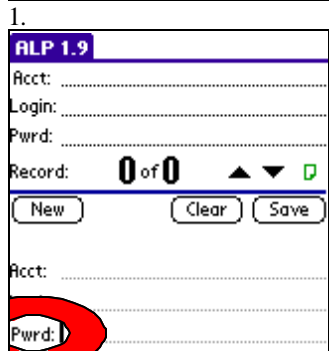
**Delete ALL:**

This action is intended for Conduit users.

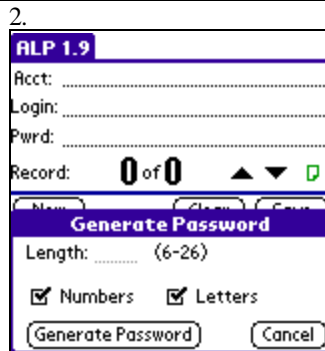
After a "Delete ALL" action is preformed. User should restore new or modified data from ALP Conduit immediately!

Note: User's registration information will be saved.

**Generation of passwords ALP 1.9f**



When editing or creating a new account, simply tap on the label "Pswrd:"



Select the features you need in the password, and set the length of the password. Then tap the "Generate Password" button.

*Palm Computing Platform and Hot Sync are registered trademarks of Palm inc.*

**If your Palm PDA ever loses data**

**Description:**

In the event that your Palm PDA requires a hard reset or your batteries die, you Palm PDA will lose the information stored in memory.

**Non Conduit Solution:**

The quickest way to ensure data recovery is as follows. Locate the ALPdbxx.pdb (where xx is the version of ALP you are running) file and ALP.prc file. Double click on these files one at a time to start the Palm install application. The install application should recognize each file and prepare them for the next Hot Sync.

**Conduit Solution:**

As a conduit user, you can back up in the same manner as non-conduit users. However, if you have used the Conduit Manager to create a current non-encrypted text file of your data, then you may find it is easier to use the Conduit Manager to simply import that data back into ALP.

**Non Conduit User Warnings:**

You must restore the program and the data with in the same Hot Sync session. If you fail to restore your database and run ALP on the Palm PDA, a new database will be created. Upon next Hot Sync session the new "empty" database will over write the old database. Data loss will occur if this happens.

*Palm Computing Platform and Hot Sync are registered trademarks of Palm inc.*