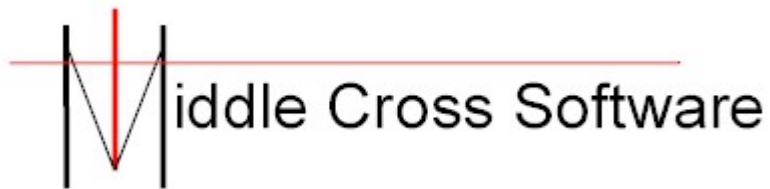


Flip Chart

Users Guide



www.middlecross.com

Table of Contents

Table of Contents	ii
Important Conversion Instructions	1
Introduction to Flip Chart	2
Creating Slides	3
Introduction to Jump Slides	4
Jump Chart Step-by-step Example.....	5
Images in Flip Chart.....	9
Images Step-by-step example	10

Thank you for your Flip Chart purchase. This document will introduce you to some of Flip Chart's powerful features. This document will continue to be expanded. Please check the Middle Cross Software website (www.middlecross.com) for new versions.

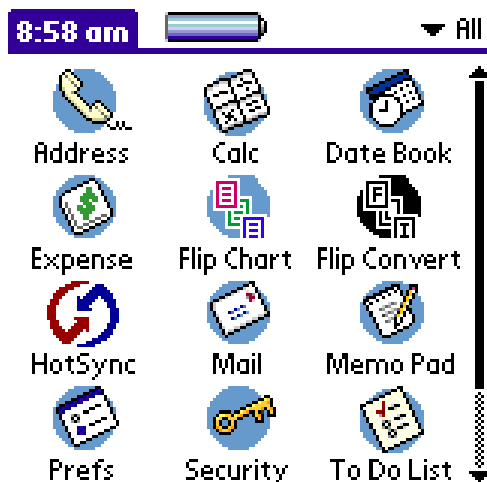
Important Conversion Instructions

If you are upgrading from version 1.0 through version 1.3, you will need to convert your charts to the new v2.0 format. If you are brand new to Flip Chart, you may skip this section.

1. Using Hotsync, install the flipcvt.prc and PalmFlip.prc files onto your Palm device.

Do **not** delete Flip Chart from your Palm before installing this version. Palm OS removes any data associated with a program when the program is removed. You don't want to lose the flip charts you've created!

2. Your Palm's application launcher will show two applications, Flip Chart and Flip Convert.



You must run Flip Convert before running Flip Chart for the first time. After running Flip Convert you may delete it from your Palm device.

Introduction to Flip Chart

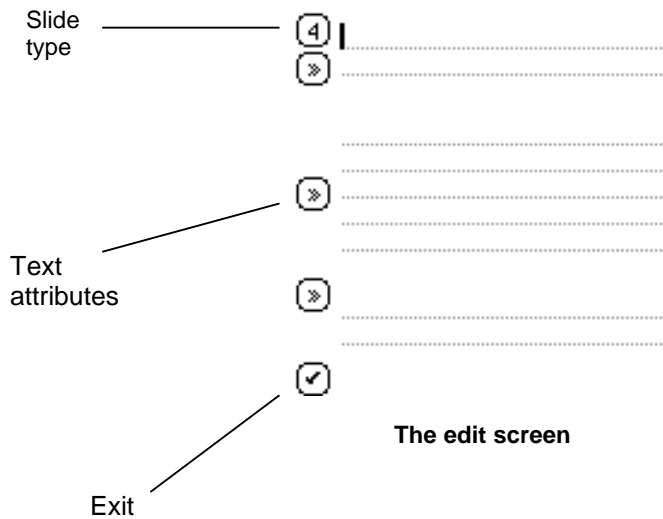
Flip Chart allows you to create slide show presentations on your Palm device. There are two types of presentations you can create.

Flip Charts - a set of slides that are viewed in a sequential manner. Flip Charts are simple to create.

Jump Charts - a set of slides that are linked to create a dynamic presentation that changes based on selections made during the presentation. Jump Charts are more complex to create and thus the following sections describe them in more detail.

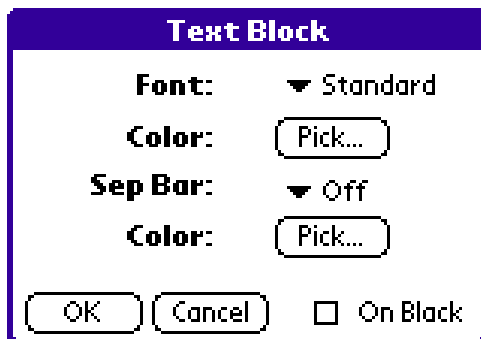
Creating Slides

A slide is a single screen of information that will be presented. Within a slide there are one or more text blocks. A text block is a section of the slide that can be formatted independently of other text on the slide. A text block can have a different font and color (if using a color-compatible device).



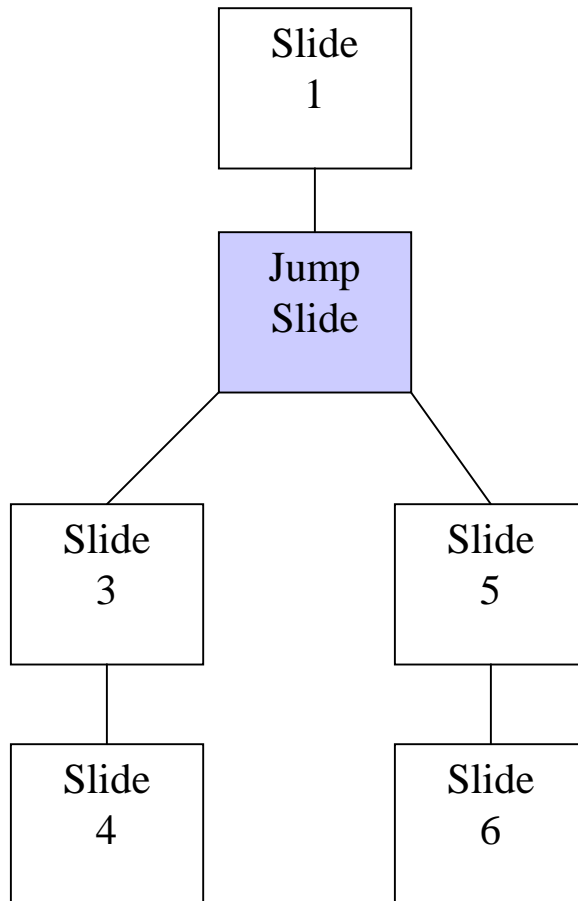
There are six styles of slides. Four are simply variations of different text block arrangements. One is a future image slide. The other is a Jump Slide that will be mentioned in detail in a later section of the document.

If you tap the text attributes button, you are presented with the available options for the text block. This screen will vary depending on if you are using a color-compatible device.



Introduction to Jump Slides

A Jump Slide is a special new type of slide in a flip chart presentation. It can best be understood from the following diagram:



A jump slide allows the person viewing the chart to decide what they want to view next.

A chart containing jump slides will be known as a **JUMP CHART**. Jump charts are completely dynamic. **FLIP CHARTS** are sequential, as you well know. You order them and will the slide show starts they are displayed in the order they appear on the slides list. Not so with **JUMP CHARTS**. Since you can have as many jumps as you want in a chart, it is necessary to establish the relationship of every slide in the chart. You will see how this is done as we do the step-by-step example.

Jump Chart Step-by-step Example

This example will show you the intricacies of JUMP CHARTS. Once you do this example, please create your own charts. This example was done using a Palm IIIc, but should follow exactly the same on other models. Assuming you've already installed v1.3x using the instructions above, let's begin.

1. Start the FLIP CHART application.
2. Tap the NEW button.
3. Tap the JUMP button to start a Jump chart
4. Enter **Jump** for both the title and file name. Tap the DONE button.
5. Tap **Jump** from the list to begin creating slides.
6. Tap the NEW button.
7. Tap 1.
8. Enter the following text:
Welcome to my presentation.

You will notice a new button above the exit button. It is the PATH button. It will allow you to assign the path that the person viewing this chart will travel. For now don't mess with it.

9. Tap the exit (check mark) button. You will now notice the slides list is a little different now. There are three columns in the list. The second two columns are the same as before. The first column is the SLIDE ID. It is now necessary to assign each slide an ID number for assigning the path. You'll see how it's used later.

Jump

01>Welcome to my presentation. |1



10. Tap the NEW button and select another slide type 1. Enter the following text and save the slide:
We can do this two ways, the easy way or the hard way.
11. Tap the NEW button and now select slide type 6.
12. The jump slide comes with two default HOT SPOTS. Hot spots are the areas for the choices a user will make when viewing the slide. Enter the following text:
Which is it going to be?
13. Tap the new PATH button (above the exit button). This brings up a new screen to set up the hot spots on the jump slide. The fields are:

X,Y: the coordinates (position) of the hot spot on the slide

Text: what the hot spot will say

Dest: the slide ID that will be jumped to if this hot spot is tapped.

Style: sets the font and color for the hot spot text

14. Set the values so they match the following:

Hot Spots

X, Y: 40 100

Text: Easy

Dest: None

X, Y: 100 100

Text: Hard

Dest: None

Tap the OK button.

15. You now see the changes reflected on the slide. Tap the EXIT button.
16. Tap the NEW button and select another slide type 1. Enter the following text and save the slide:
Good.
17. Tap the NEW button and select another slide type 1. Enter the following text and save the slide:
That's too bad.

- Once you've got all your slides done (or at this the first version of your chart), set all the routing. Select slide ID 01 from the slides list and tap the EDIT button.

Jump

01	Welcome to my presentation.	1
02	We can do this two ways, the ec...	1
03	Which is it going to be?	6
04	Good.	1
05	That's too bad.	1



- Tap the PATH button. You now get the SLIDE PATH screen. Tap the SELECT... button. From this list, tap the slide that will come after slide ID one. Tap on slide ID 02 from the list.

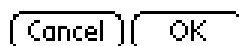


Tap the DONE button. Exit the slide.

- Repeat step 18, but this time assign slide 03 to follow slide 02.
- Repeat step 18, but this time assign slide 04 to the first hot spot, and assign slide 05 to the second hot spot.

Hot Spots

X, Y:	40... 100...	Style
Text:	Easy.....	
Dest:	4.....	Select...
X, Y:	100... 100...	Style
Text:	Hard.....	
Dest:	5.....	Select...



22. You don't have to assign a PATH to slides 04 and 05 as they both go nowhere. Either one can be the end of the presentation.
23. Start the slide show and see what you've accomplished!
24. If it doesn't work as it should, review the instructions again. Start over completely if necessary.

Images in Flip Chart

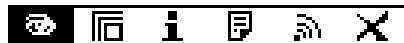
How is this possible? Flip Chart takes advantage of the very popular and technically superior FIREVIEWER by FIREPAD, INC. (www.firepad.com). By having the FireViewer product on your Palm, you can show grayscale and color images. There are a few issues you should be aware of:

- Flip chart presentations are exited by tapping on a slide, and flipped through by using the arrow keys on the Palm. FireViewer doesn't support this at this time (they may in the future). So for now, you must tap (or double-tap) the image to exit the image and return to the flip chart presentation. (On Palm OS 3.5 devices, a little floating button appears on the image).
- FireViewer allows you to scroll around an image by dragging your Palm stylus around on the screen. You have to tap (or double-tap) to exit it.
- Since FireViewer doesn't support up and down arrow keys for exiting the image, you can't go backward in the presentation. Flip Chart will get stuck on the image. For now, you'll have to exit the presentation and start over.
- Since images are separate PDB files, beaming a image presentation to someone becomes more complicated. You'd have to go through FireViewer and beam all the images separately. The good news, Flip Chart will continue smoothly without the images.

Images Step-by-step example

The following example assumes that you have the Firepad FireViewer application loaded on your Palm device and that you have at least image to view. You can use Firepad's FireConverter to take .JPEG and .GIF files from your PC and be able to display them on your Palm device.

It is helpful to run FireViewer to see the names of the images you have installed before starting this process.



1. Start the FLIP CHART application.
2. Tap the NEW button.
3. Tap the FLIP button to start a flip chart.
4. Enter **MyTest** for both the title and file name. Tap the DONE button.
5. Tap **MyTest** from the list to begin creating slides.
6. Tap the NEW button.
7. Tap 5. This is the icon for an image slide. You will get the following screen:

Graphic Image Slide

Image Name:

|.....

Image Description:

.....
.....
.....
.....



8. Enter the *Image Name*. This must exactly match the name of an image in the FireViewer database.
9. Enter the *Image Description*. This text is displayed in the event that the image file isn't found, that the device showing this flip chart doesn't support the image requested (a non-color Palm trying to display a color image), or the device doesn't have the FireViewer application. This allows you to beam a chart containing images to someone, and the chart will still function without any image support.
10. Tap the exit (check mark) button.

Start the slide show and the image should display. If there is a problem, an error message will appear directing you to what is causing the problem.