

# Software License Agreement

The software **Resplendent Associator** including its documentation and all its content is legally protected by copyright. Use of the software is only allowed in accordance with this license agreement.

In this agreement:

"**software**" means the software product **Resplendent Associator** that you have purchased or obtained for evaluation including its documentation and all its content.

"**trial version**" or "**shareware version**" means a copy of the software distributed for evaluation purposes merely which is described as such by the software.

"**registered version**" means a copy of the software purchased from us and which is not described as a trial version by the software.

"**we**" or "**us**" means **Resplendent Software Projects**, an Amsterdam-based software company.

"**you**" means the end user of the software.

This agreement is between you, the end user of the software **Resplendent Associator** and Resplendence Software Projects and explains how you may use both trial and registered versions of the software. If you do not agree to the terms and conditions of this agreement you should in no way use, copy or install the software.

The software is fully protected by copyright under Dutch law and international treaty provisions.

You may use a shareware version of the software for a period of up to 21 days for evaluation purposes, to determine whether the software meets your needs before purchasing it. When this period has ended you agree to purchase a registered version of the software or otherwise to stop using it.

The trial version of the software may be used or installed on as many computers or systems as required to perform your evaluation. Your 21-day evaluation period starts as soon as you first install the software on any system.

Once the evaluation period has ended and you purchase the program, you agree not to use the software on more than one computer at a time. However you may install additional copies on more than one computer only if the software is used by the same individual only and there is no possibility that the software will be in use at the same time.

You may copy and distribute the trial version of the software only if you include all of the files that you originally received with your trial version. When you distribute the trial version of the software you agree to inform the recipient that the copy is to be used for a time-limited evaluation period and that a registered version of the software will have to be purchased once the evaluation period has ended. You agree not to sell trial versions of the software.

Once you have purchased and received the registered version you are allowed to make copies of the software for archival purposes only. You agree not to distribute or copy the software or any part of it without the advance written permission of Resplendence Software Projects.

We don't promise that the Program will be free of bugs or program errors. If you report a program error or bug to us, we will do our best to correct it. If we issue a maintenance release for the Program which includes a correction for an error you reported, we will assist you in downloading it, or send you a copy of that maintenance release at no charge if you request it. We will only do this for maintenance releases, not for new major releases or other new versions of the software.

## **DISCLAIMER FOR COPIES OF THE TRIAL VERSION OF THE SOFTWARE:**

**YOU ARE NOT PAYING FOR THE TRIAL USE LICENSE FOR YOUR COPY OF THE TRIAL VERSION OF THE SOFTWARE. ACCORDINGLY THE TRIAL VERSION IS PROVIDED "AS-IS" AND WITHOUT WARRANTY OF ANY KIND.**

## **DISCLAIMER FOR COPIES OF THE REGISTERED VERSION OF THE SOFTWARE:**

**WE DISCLAIM ANY WARRANTIES, EXPRESS OR IMPLIED, ORAL OR WRITTEN, INCLUDING ANY IMPLIED WARRANTIES OF MERCHANTABILITY OR FITNESS FOR A PARTICULAR PURPOSE.**

## **LIMITATION OF LIABILITY:**

**IN NO EVENT SHALL WE BE LIABLE FOR ANY INCIDENTAL, CONSEQUENTIAL, OR PUNITIVE DAMAGES WHATSOEVER ARISING OUT OF USE OF THE USE OF THE SOFTWARE. SOME STATES AND COUNTRIES DO NOT ALLOW EXCLUSION OR LIMITATION OF LIABILITY FOR INCIDENTAL OR CONSEQUENTIAL DAMAGES, THEREFORE THE ABOVE LIMITATION MAY NOT APPLY TO YOU.**



# How to order Resplendent Associator

## **The registered version of Resplendent Associator costs \$30.**

There are several ways to order and obtain Resplendent Associator:

- **Online by Creditcard**

Owners of a Mastercard, Visa, American Express or Discover creditcard can send their orders online over a highly secure Verisign connection and immediately download the registered product.

Browse to <https://www.regnow.com/softsell/nph-softsell.cgi?item=1192-1> There you can send your name, address and creditcard number through a connection that meets with the highest standards of security. Your card information will be verified, then you will immediately be e-mailed a username and password that allow you to download the latest version of the software directly from our website.

- **By check, money order or transfer**

Checks must be in US dollars drawn on a Dutch bank, or you can send international postal money orders in US dollars. To order send your check to the following address: Resplendence Sp, H van Andelstraat 8, 3235 BJ, Rockanje, The Netherlands. Bank: Abn Amro Rockanje, account no: 506452190. Sending cash is not recommended because the risk it gets lost or stolen on the way is too high. Ensure that you include your name, street address, e-mail address, telephone number and preferred way of delivery (download option or floppy disk).

Money transfers to our bank account (either \$30 or Hfl.50) will also be accepted. Orders are immediately being processed on arrival.

# Introduction to Resplendent Associator

Resplendent Associator for Windows 95/NT is the ultimate tool for handling associations between extensions and filetypes. With this program you can decide yourself which applications to use for opening your documents. If you want to add your own menu options to the popup menus that appear when you right-click on a file, then this is the program you are looking for. And never get the annoying and confusing **Open with...** dialog again in Windows when you try to open a document that is not yet registered. Let the Extension Editor of Resplendent Associator do the work for you instead so that for once and ever the program of your choice will open the document of your choice. of file association.

Windows internally keeps track of a list of file extensions and their associated programs. Instead of associating these directly to an executable file, they are linked to filetypes. A filetype contains information about a program, its parameters and the menu options that appear when you right-click on a file. By storing program information in filetypes, it is more easy to associate a set of extensions with one single program without having to enter all settings for each file extension individually.

With Resplendent Associator you can perform an association just by picking up an extension and dropping it onto a filetype. And then for once and ever, each file with that certain extension will be started by the program that you chose. Apart from performing simple file associations, it allows you to edit each extension and filetype in the highest detail.

But it can do more: you can set your own menu options and actions when you right-click on a file. So eventually you can use a set of programs to open a file and you can select which one to use. And if you want to set such options for all files that appear in Windows Explorer or if you want a handler for opening files that have not been yet registered this program is what you are looking for.

## **System Requirements:**

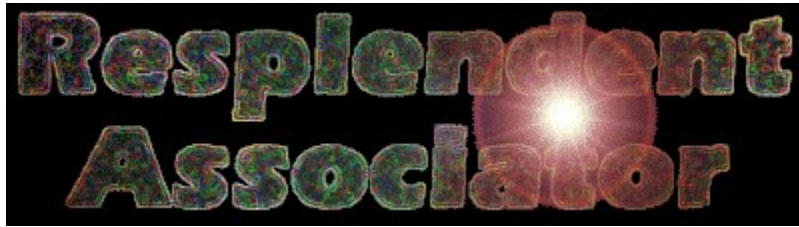
A PC running Windows 95, Windows NT 4.0 or higher, 2MB Free harddisk space.  
When running on NT make sure you have sufficient user rights to create file associations.

## **System Security Warning:**

**Resplendent Associator is a powerful tool and if you don't know what you are doing it is not difficult to mess up the Windows Registry and lose functionality of the Windows Shell. For instance if you modify the file association for the extension .lnk (which is used for shortcuts in the program groups and desktop) it may happen that you can no longer start a program from the start menu or desktop.**

**Fortunately all actions performed with Resplendent Associator are fully registered and so can be undone. However if you are meanwhile using other software to edit file associations (or edit them directly in the Windows Registry), it can happen that certain actions that you performed with Resplendent Associator have become irreversible. Therefore it is advisable always to make a backup of the registry. To do so Select from the main menu: File | Export Association Settings.**





# version 1.00

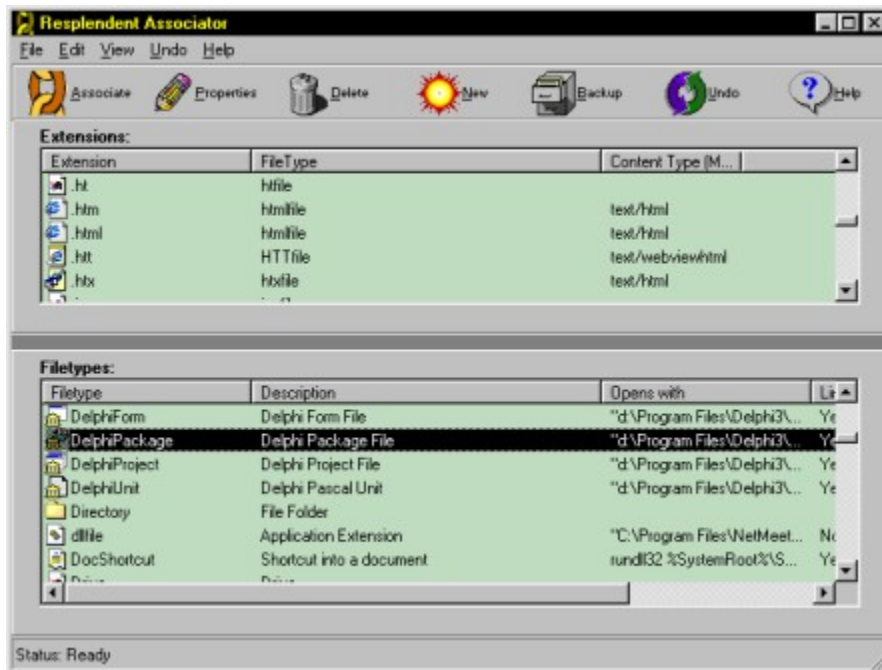
for Windows 95/NT

Author: Daniel Terhell  
(c) Copyright 1998 Resplendence Software Projects  
Phone: +31 20 4866128  
e-mail: [info@resplendence.com](mailto:info@resplendence.com)  
website: <http://www.resplendence.com>

Use of this program is subject to the terms and conditions of the [Software License Agreement](#) provided with this documentation.

# Main Association Editor

The main Association Editor is where Resplendent Associator starts. If you just started Resplendent Associator then it will have to retrieve registry and icon information from the system before it is completely ready. This will take some seconds up to some minutes, depending on the speed of your computer and the amount of software that you have installed. When this process is complete, you will see two views with items. The one at the bottom shows all filetypes which contain information on which programs to use. This editor provides all functionality to create, edit and associate extensions and filetypes. For each of the views you can set various displaying options that make it easy to get a good overview.



## How to associate an extension with a program

Click on an extension, drag it onto a filetype and drop it. Each filetype should be representing at least one program. To ensure you can see what program belongs to what filetype, select *View | Filetypes with details* from the main menu. The "opens with" column will show the executable filename of the program. Another way: click on an extension, click on a filetype and Select *Edit | Associate* from the main menu (or click the Associate button if it is visible).

## How to add a new extension or filetype

Click in either the extension or the filetype view. Select *Edit | New* from the main menu, or press on the New button if it is visible. Another way: Right click in the appropriate view on the right mouse button and select New from the context menu that appears.

### **How to delete an extension or a filetype**

Click on the item you want to delete and Select *Edit | Delete* from the main menu, or press on the delete button if it is visible. Another way: Right click in the appropriate view on the right mouse button and select New from the context menu

### **How to edit an extension or a filetype**

Click on the item you want to delete and Select *Edit | Properties* from the main menu, or press on the delete button if it is visible. Another way: double click on the item you want to edit. You will be taken into a more specific Editor, either the [extension editor](#) or the [filetype editor](#) which will allow you to edit the items properties in detail.

### **How to change the way items are displayed**

Select *View* from the main menu and select whether you want the extensions and filetypes to be represented by small icons, large icons or listed with all their details in a grid. This can also be achieved by right clicking in the views and selecting the options of your choice. To sort the items alphabetically when the view is being displayed with details, just click on a header column. Additional settings can be found in the main menu in the [Options Dialog](#).

### **How to select multiple extensions**

Click on an extensions. Now press shift while you click on another extension. The whole range will be selected. By pressing Ctrl while you click you can toggle extensions on and off.

### **How to backup the association settings**

Click on the button *Backup* or select *Backup Association Settings* from the main menu. You will be prompted for a filename to save the settings to. While the backup is in progress you can carry on to use the program as normally. When the backup is complete you will be notified. The backup that is made is a Windows Registration file which is compatible with the program RegEdit that is shipped with Windows. To restore it, select *Restore Association Settings* from the main menu and select the desired backup file.



# Options Dialog

The options dialog allows you to change advanced options that affect the general behaviour of the program or the visual representation.

## General Settings:

The boxes *Prompt before deleting filetypes*, *Prompt before deleting extensions* and *Prompt before performing associations* will make appear a dialog box that allows you to either confirm or reject the action you have chosen, if they are ticked.

If the box *Use Resplendent Associator to open all unregistered files* is ticked, then Resplendent Associator will be used to handle unregistered filetypes instead of the default Windows *open as...* or *open with...* dialog. You will start with the extension editor so you can immediately associate the extension of the file that you just selected and open it with the new program.

*Allow all files to be opened with Resplendent Associator* will create an *Associate* menu option for all the files that appear in Windows Explorer. This will allow you to (re)associate each file with a program of your liking. This option can be useful if you are generally not satisfied with the file associations that have been pre-installed for you.

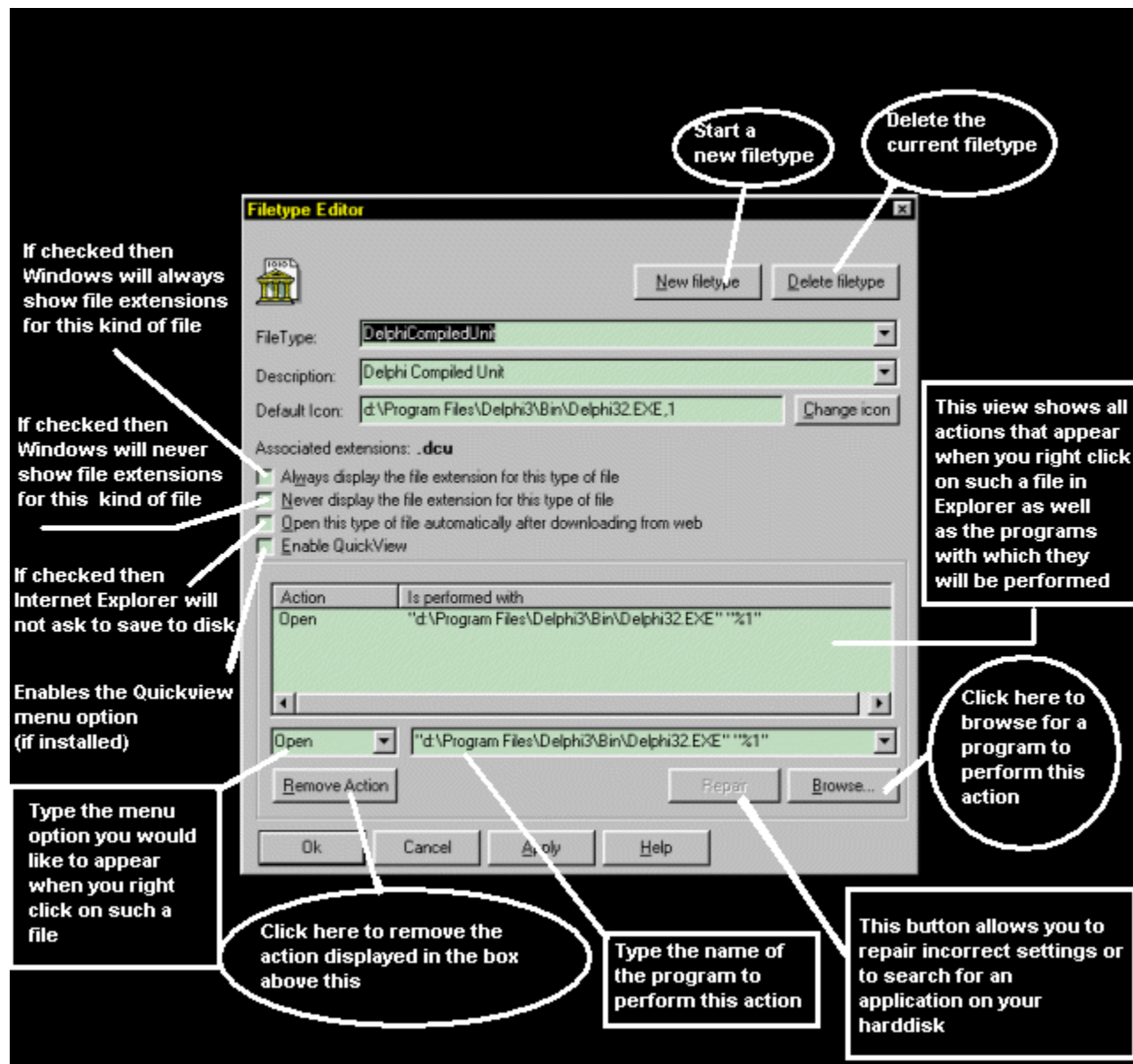
## Visuals:

On this page you can change the bordersize of the views in the Main Association Editor. Also you have the possibility to change the font of the items in the views.

The box *Display extensions and filetypes while grid is being filled* will make items appear in the views (allowing you to edit them) before the retrieving of association settings have finished and the views are complete.

# Filetype Editor

The Filetype Editor allows you to edit in detail which programs to use for you filetypes. A filetype is used to store shell information of an application. Instead of immediately associating an extension with an executable file, an extension is often associated with a filetype which contains the information of the program to run. In this way eventually multiple extensions can be associated with a single program.



## Setting name and description for the filetype

At the location of **Filetype**, type a name that allows you to recognize the program you are going to

choose, and at **Description**, type a description explaining what this kind of file is used for.

## Setting enhanced shell options

Below there are four boxes that you can tick. Do not change the settings unless you are sure what they are about. The boxes **Always show the file extension for this type of file** and **Never show the file extension for this type of file** allow you to override any other settings you have made in Windows Explorer of showing extensions of files. So if you choose to always show the file extension for **Inkfile** (used for internet shortcuts), then you will always see shortcuts with the associated extension (.lnk). If you set tick the box **Open this type of file automatically after downloading from web** then Internet Explorer will never ask you to save to disk this kind of file but opens it immediately when you completed an internet download. If it is not checked then the standard behaviour of Internet Explorer is to prompt you whether to open it or to save it to disk. Finally, if you tick **Enable QuickView** then this type of file will have a shortcut menu QuickView, when you right-click on it and QuickView is installed.

## Defining your own shell actions

Below these boxes there's the action editor. Here you can enter so called action verbs for this kind of program. If you right click on a file, then these action verbs will be selectable from a context menu. So with this editor you can set yourself the menu options you would like to appear as well as which programs to use to perform them. If for instance you have a set of paint programs installed that you all use, you could set different action verbs for a graphical type of file so that you can open it with the program of your choice by right-clicking on it.

To enter new actions, type the name of the action. If you set the action to **open**, then (in nearly all cases) this is considered the default action and will be performed when you double-click on the file.

Type the full directory path and name of the program you would like to use for this action. If this filename is a long filename with spaces then it should be quoted (""). After this type the parameters or commandline options to open this program. To pass the file you have selected, choose "%1". This should also be quoted, for the file you have selected may be a long filename containing spaces. In this way, the file you selected will be recognized as a single parameter. If you omit these quotes, Resplendent Associator will warn you and the button below will have the caption **Repair**. If you click on it, the program will fix quote and eventually find the path to the program that you typed. When this button has the caption **Search...**, then you have the possibility to scan all your local drives for applications. Just double click on an application and the parameters will be set properly. If you know where to find the application, then **Browse...** may be a faster way fill in the program settings.

## Changing your file icon

If you are not satisfied with the icon that was found in the executable file, then click **Change Icon** to browse for another file containing an icon. You will be presented a list of all the icons in the file. Click on the icon of your liking and it will be changed.

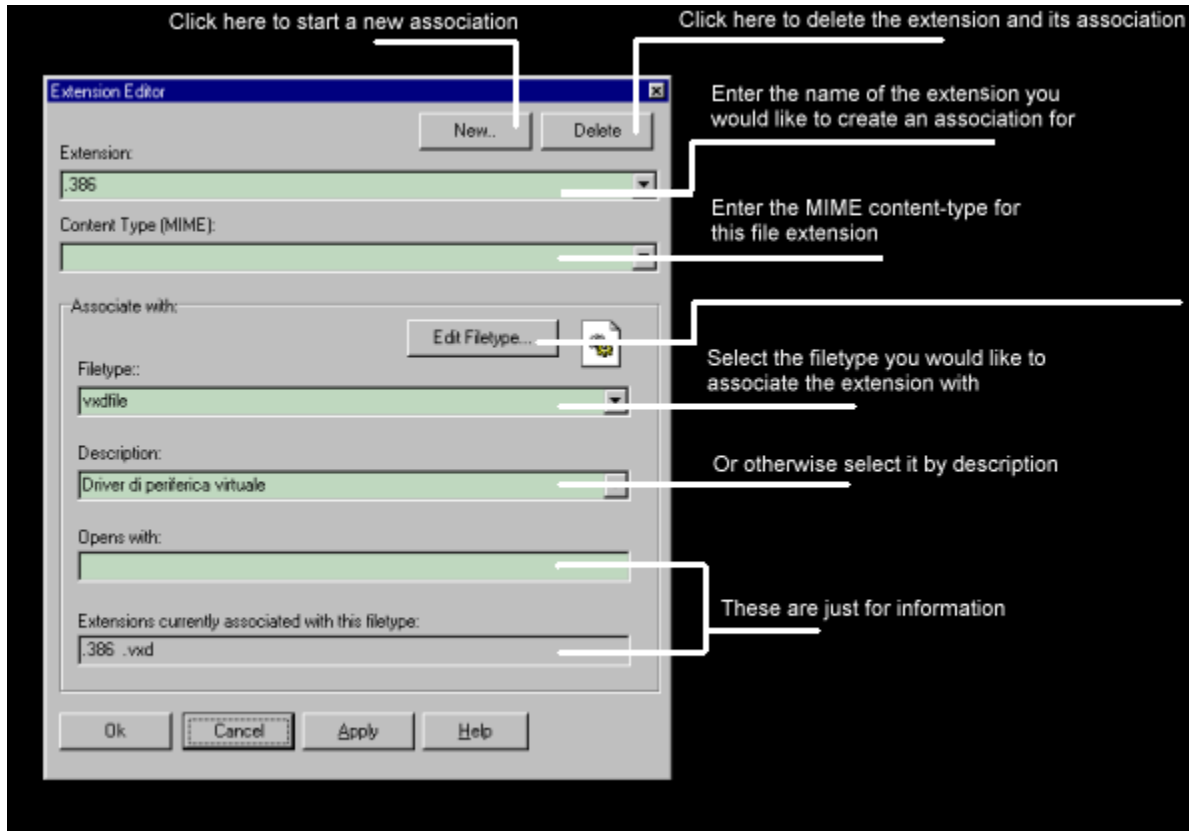
## To store the settings you chose

When you are finished and want to update or create the settings as they are currently displayed, press **Ok**, or **Apply** if you do not want to leave the filetype editor immediately.

**Note:** there is a possibility to apply settings to all files instead of just files of one single filetype. To achieve this, make changes to the filetype with the name " \* ". If you want to apply settings to all unregistered filetypes, then change filetype "*Unknown*".



# Extension Editor



The Extension Editor allows you to edit settings for a file extension and provides easy means to associate it with a program or filetype..

At the top enter the name of an extension you would like to create or associate with a program. Now below this, you can set the *Mime Content Type*, which is used merely by Internet servers to recognize the type of file.

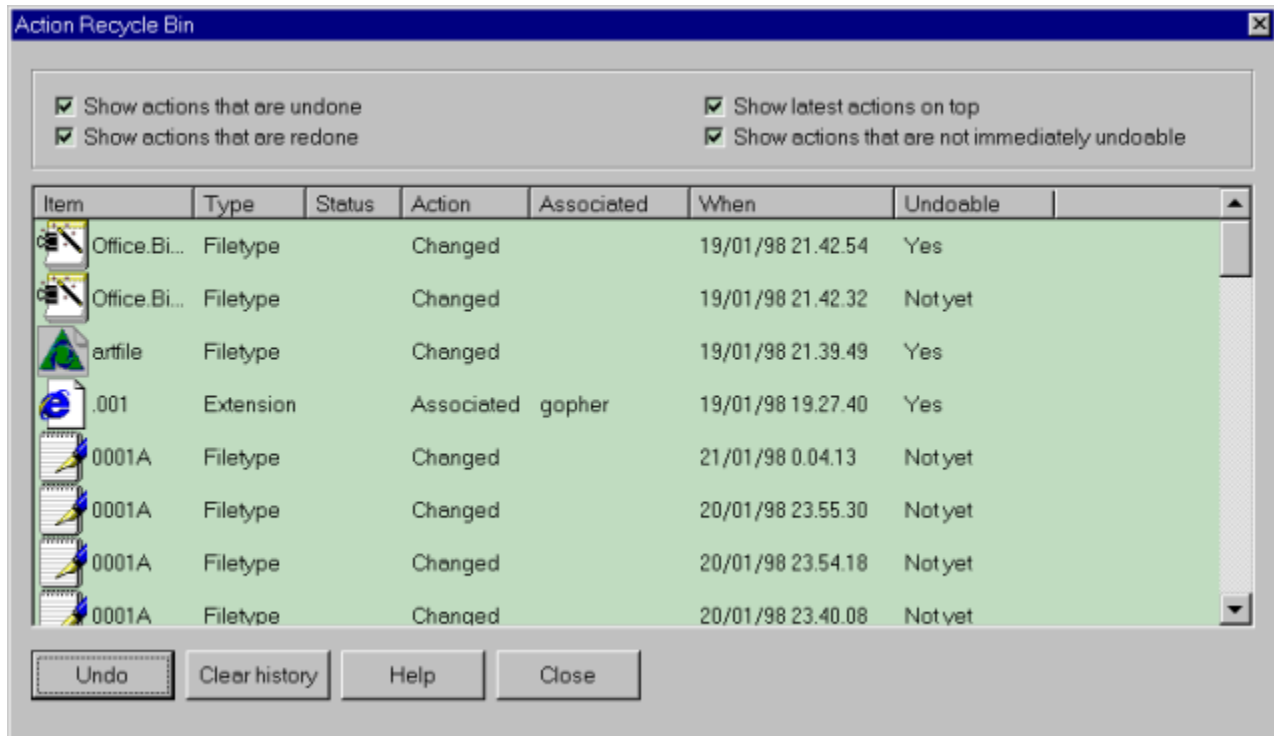
Now from the box below this, choose the filetype you would like to associate this extension with. You can either select the filetype by choosing the name or the description. If you want to edit the properties of the filetype being displayed then click *Edit Filetype* and you will be taken into the [filetype editor](#). When you are sure to create the association then click *Apply*.

To start a new file extension click the button *New Extension*. To delete the settings (including its association) for the file extension that is currently displayed, click *Delete Extension*.

# Action Recycle Bin

The Action Recycle Bin was designed to help you recover from situations in which the changes to filetypes and extensions did not create the desired effect. To undo an action, just click on it and press the undo button. The action will get the status Undone (or eventually Redone) and you have recovered from the situation.

It is possible that other changes to the same filetype or extensions must be undone before the action becomes undoable.



## Explanation of the Column Headers:

The column *Item* displays the name of the extension or filetype that was affected by the action you performed. The column *type* tells whether this is a filetype or an extension. *Status* will tell whether this action has already been undone (or eventually redone) before. This column will always be blank if you have not ticked the boxes *Show Actions that are Undone* and *Show Actions that are Redone*. The next column tells you what you did with the item (changed, deleted, created or associated) and if the action was an association, the next column will also tell you which filetype was involved in the association. The column after that, when will exactly tell you when it happened that you changed the item. Finally the last column says whether the action you have performed can be undone immediately. If you made multiple changes to an item, it is possible that you have to undo other changes before an action becomes undoable.

## System Security Warning:

Resplendent Associator is a powerful tool and if you don't know what you are doing it is not difficult to mess up the Windows Registry and lose functionality of the Windows Shell. For instance if you modify the file association for the extension .lnk (which is used for shortcuts in the program groups and desktop) it may happen that you can no longer start a program from the start menu or desktop.

Fortunately all actions performed with Resplendent Associator are fully registered and so can be undone. However if you are meanwhile using other software to edit file associations (or edit them directly in the Windows Registry), it can happen that certain actions that you performed with Resplendent Associator have become irreversible. Therefore it is advisable always to make a backup of the registry. To do so select from the main menu: *File | Backup Association Settings*.

