

# ImageConverter Manual

## **Contens:**

ImageConverter

QuickView

Supported graphics formats

License Agreement

Registration

## ImageConverter

**ImageConverter** is a powerful tool for working with the image collection.

**ImageConverter** is an extension of features for your Windows Explorer popup-menu.

Using **ImageConverter** you can convert one or many images with either a single mouse click or in batch mode into any of supported graphics formats.

Using **ImageConverter** you can add a preview and short info about selected image to Windows Explorer popup-menu.

**ImageConverter** can put a copy of selected image into the clipboard or set a selected image as background of your desktop.

## QuickView

**QuickView** is a useful and simple tool for viewing and showing your images.

**QuickView** can show your images in Slideshow mode.

**QuickView** supports a lot of graphics formats.

## Supported graphics formats

**TIFF**(Tag Image File Format): Images with PackBits, Modified Huffman encoding\*, CCITT Group 3 1D\*, CCITT Group 3 2D\* and CCITT Group 4\* compression and uncompressed. Monochrome, 256 color, grayscale, 24-bit color and CMYK color formats are supported.

**GIF**(Graphics Interchange Format): Uncompressed animated, interlaced and non-interlaced images are supported.

**BMP**(Windows Bitmap Format): All uncompressed and OS/2 Bitmap images are supported.

**PCX and DCX**(Paintbrush Format): Monochrome, 16 color, 256 color and 24-bit color images are supported.

**EPS**(Encapsulated Postscript Format): Encapsulated postscript images with and without display images are supported. If the EPS file doesn't contain a TIFF or Windows Metafile display image then the filename of the EPS image will be supported.

**TGA\***(Targa Format): All 8, 16, 24, and 32 bit images are supported. Versions 1 and 2 of the file format are supported although compressed images in V 1.00 format may take longer to display than Version 2 images.

**JPEG**(Joint Photographic Experts Group Format): All JPEG files in compliance with the JFIF standard are supported. Progressive JPEG images is not currently supported.

**PNG**(Portable Network Graphics Format): Standard and interlaced PNG images are supported.

**DXF\***(Drawing Interchange Format): 2 Dimensional DXF files are supported.

**FPX\***(FlashPix): FlashPix images are supported.

**WMF\***(Windows MetaFile Format): Only metafiles which conform to the Aldus Placeable Metafile Format are supported. Most applications which export or import metafiles support this format.

**IMG\***(Erdas Imagine Format): All IMG files are supported.

**WPG\***(Word Perfect Graphic Format): Word Perfect Graphic Format images are supported.

**PCD\***(Kodak Photo CD Format): Kodak Photo CD images are supported.

---

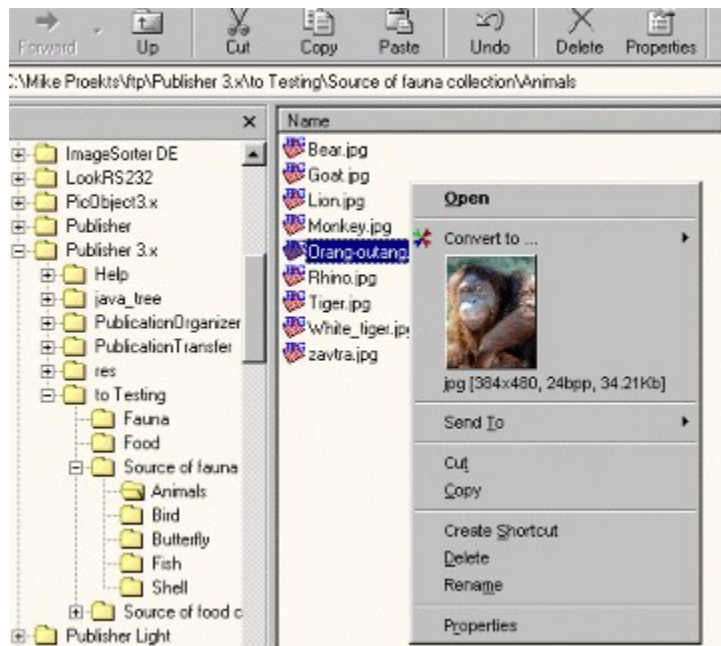
\*) Read only

## ImageConverter can add a preview and some short information about selected image to Windows Explorer popup menu

To add a preview (thumbnail) and some short information about selected image to Windows Explorer popup-menu, please launch the ImageConverter settings panel and set on **Show preview in popup-menu** feature on the page Options.

To view thumbnail in popup menu, please do right-mouse-click in your image in Windows Explorer.

You can see a sample of inserting a thumbnail in the popup-menu in this screenshot:



Using ImageConverter you can convert one or several selected images to any of supported graphics formats

You can convert one or more images using a single mouse click.

To do it, please select one or more images in Windows Explorer and do right-mouse-click. Select a **Convert to...** string in popup-menu and change the destination format for converting.

Results of converting (destination file(s) in a chosen format and log-file) would be saved in the current folder or in the **Predefined destination folder** if it were selected in ImageCinverter settings on the page Options.

## Using ImageConverter you can put a copy of selected image to clipboard

You can put a copy of an image to clipboard using a single mouse click.

To do it, please select an image in Windows Explorer and do right-mouse-click.  
Select a **Convert to...** string in the popup-menu and choose the **Copy to clipboard** string.

You can insert image from clipboard to your document in any text or graphics editor.

Using ImageConverter you can put a copy of selected image as background of your desktop

You can put a copy of an image as background of your desktop using a single mouse click.

To do it, please select an image in Windows Explorer and do right-mouse-click.  
Select a **Convert to...** string in the popup-menu and choose the **Set as wallpaper** string.



QuickView is a useful and simple tool for viewing your images

To open your image in QuickView, please click the **Open** button in the toolbar or use **Drag and Drop** feature.

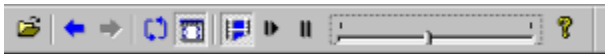


## QuickView can show your image collection in the SlideShow mode

To view your image collection in the **SlideShow** mode, please click the **Scan and Play** button in the QuickView toolbar.



Using the QuickView **SlideShow** toolbar you can set the **time of showing** a picture or make a pause and view your image collection in the **Image by Image** mode with using the **Show Next** button.



## Using ImageConverter you can convert one or many images in the Batch Mode

### **Mode 1\***

To convert your images in Batch Mode please execute:

```
[PATH]\Converter.exe [PATH]\you_picture.jpg /destination_format**
```

For example:

```
C:\Program Files\FCoder\ImageConverter\Converter.exe d:\pictures\house.jpg /BMP
```

### **Mode 2\***

Produce a new file in the Notepad and write into it:

---

```
destination_format**
```

```
[PATH]\SourceFile1.bmp
```

```
[PATH]\SourceFile3.jpg
```

```
[PATH]\SourceFile4.gif
```

---

Save this file as "BatchFile.txt" and launch:

```
[PATH]\Converter.exe [PATH]\BatchFile.txt /BAT
```

---

\*) Results of converting (destination file(s) in a chosen format and log-file) would be saved in the current folder or in the **Predefined destination folder** if it was selected in [ImageCinverter settings](#) on the page [Options](#).

\*\* ) As *destination\_format* one of parameters: JPG, BMP, TIF, GIF, PNG, EPS, PCX or DCX can be set.

## License Agreement

### IMPORTANT - PLEASE READ ATTENTIVELY !

The present license agreement is a legal document, it consists between you (either an individual or a single entity) and fCoder Group International, for the fCoder software product identified above, which includes computer software and may include associated media, printed materials, and "online" or electronic documentation hereafter known as ("PROGRAM"). The PROGRAM also includes any updates and supplements to the original PROGRAM provided to you by fCoder Group International. By installing, copying, downloading, accessing or otherwise using the PROGRAM, you agree to be bound by the terms of this license. If you do not agree to the terms of this license, do not install or use the PROGRAM.

### THE LICENSE FOR the PROGRAM

The PROGRAM is protected by copyright laws and international copyright treaties, as well as other intellectual property laws and treaties. The PROGRAM is licensed, not sold.

#### 1. GRANT OF LICENSE.

This AGREEMENT gives you the following rights:

\*) Systems Software.

You may install and use one copy of the PROGRAM on a single computer, including a workstation, terminal or other digital electronic device ("COMPUTER").

\*) Storage and use in a network

You may also store or install a copy of the PROGRAM on a storage device, such as a network server, used only to install or run the PROGRAM on your other COMPUTERS over an internal network. However, you must acquire a dedicated license for each separate COMPUTER on or from which the PROGRAM is installed, used, accessed, displayed or run. A license for the PROGRAM may not be shared or used concurrently on different COMPUTERS.

#### 2. DESCRIPTION OF OTHER RIGHTS AND LIMITATIONS.

\*) Limitations on Reverse Engineering, Decompiling, and Disassembling.

You may not reverse engineer, decompile, or disassemble the PROGRAM, except and only to the extent that such activity is expressly permitted by applicable law notwithstanding this limitation.

\*) Separation of Components.

The PROGRAM is licensed as a single product. Its component parts may not be separated for use on more than one computer.

\*) Rental.

You are not authorized to rent, lease or lend the PROGRAM.

\*) Software Transfer.

The initial user of the PROGRAM may make a one-time permanent transfer of this PROGRAM only directly to an end user and this transfer must include all of the PROGRAM (including all component parts, the media and printed materials (if any), any upgrades, and this agreement.) The end-user of such transfer must agree to comply with the terms of this agreement.

\*) Termination.

Without prejudice to any other rights, fCoder Group International may terminate the present agreement if you do not observe its conditions and rules. In such event, you must destroy all copies of the PROGRAM.

#### 3. DISCLAIMER OF WARRANTY

THIS SOFTWARE ARE SOLD "AS IS" AND WITHOUT WARRANTIES AS TO PERFORMANCE OR MERCHANTABILITY OR ANY OTHER WARRANTIES WHETHER EXPRESSED OR IMPLIED.

Because of the various hardware and software environments into which program may be put, NO WARRANTY OF FITNESS FOR A PARTICULAR PURPOSE IS OFFERED.

Good data processing procedure dictates that any program be thoroughly tested with non-critical data before relying on it. The user must assume the entire risk of using the program. ANY LIABILITY OF THE

SELLER WILL BE LIMITED EXCLUSIVELY TO PRODUCT REPLACEMENT OR REFUND OF PURCHASE PRICE.

**COPYRIGHT.**

The program, including any images, photo, animation, video, sound recordings, music and text, are the intellectual property of fCoder Group International or its suppliers and may be protected by the legislation on the copyright and rules of the intellectual property laws and treaties. This agreement does not authorize you to make copies of printed materials accompanying the Program.

fCoder Group International © 1998, 1999

[www.fcoder.com](http://www.fcoder.com)

[imageconverter@fcoder.com](mailto:imageconverter@fcoder.com)

## Registration Service

To buy the commercial copy of the ImageConverter, please enter the Internet site:  
<http://www.fcoder.com/registerpage.htm> and select link with title **ImageConverter**.

Please fill in the registration form, which will appear after your click to this link.  
You can use an online, phone, fax and postal-mail registration. To get more info, please see <http://www.fcoder.com/registerpage.htm>.

If you have any questions or troubles with registration, please notify us by e-mail:  
[imageconverter@fcoder.com](mailto:imageconverter@fcoder.com). We will send an answer to you within two days.

## ImageConverter Settings Panel

You can launch ImageConverter Settings panel in three ways:

1. Select **Start=>Programs=>fCoder=>ImageConverter=>IC Settings**
2. Select any image in Windows Explorer and do right-mouse-click. Select the **Convert to...** string in the popup-menu and choose the **IC Settings** string.
3. Do double-mouse-click in **Settings of ImageConverter** icon in tray:



If you have chosen any new features and want to save and use it in next converting, please press the **Ok** button. If you need to restore old settings, please press the **Cancel** button.

### **ImageConverter Settings panel contain ten pages:**

Options - contains general settings.

Size - contains width and height of destination image(s) and the method of resizing.

About ImageConverter – keeps a short information about the ImageConverter, the version number and a copyright.

### **Custom settings of destination image:**

to BMP -- Will be used at converting to Windows Bitmap Format.

to PNG -- Will be used at converting to Portable Network Graphics Format.

to EPS -- Will be used at converting to Encapsulated Postscript Format.

to GIF -- Will be used at converting to Graphics Interchange Format.

to JPEG -- Will be used at converting to Joint Photographic Experts Group Format.

to PCX -- Will be used at converting to ZSoft Paintbrush Format.

## Made by fCoder Group International

The **fCoder Group** was originally formed in Russia by a team of programmers. In the summer of 1998, with the addition of personnel from the United States, it became ***fCoder Group International***.

Our **goal** is to design and implement programs that will empower both the computer novice and the experienced "power" user.

### **Our Philosophy**

The personal computer was originally designed to help simplify complicated tasks for the "average" user. Software designers, limited by the speed and availability of memory and storage on these early machines, were forced to write small, simple, task-oriented programs.

In recent years, computers have become more powerful, memory is inexpensive and easy to acquire, and storage, both removable and fixed, is limited only by the depth of your pockets.

The introduction of the graphical user interface (GUI) in Windows™ and its successors provided an environment that was less intimidating to new users. At the same time, it made the computer more versatile, especially in areas like graphics and sound. New programming languages made program development easier and the resultant programs more powerful.

The arrival of the Internet made available untold resources. "Shareware" programs that can be test-driven before making a decision to purchase them are everywhere.

But the original promise of the personal computer has never been truly fulfilled. If anything, computers have become more and more complicated. New "mega-programs", which attempt to be all things to all people, require ever-larger memory and storage resources. Additionally, they are difficult for the average user to learn. If you have any doubt about this fact, just visit the computer book section of any large bookstore.

At **fCoder Group International** we believe that:

1. Programs should be practical, functional, simple, and result oriented.
2. The user should have to do less work to achieve the expected results.
3. The computer should be used as a tool, giving the user the opportunity to make straight-forward choices and then performing the function it was designed for: quickly and reliably doing the repetitive, detailed work necessary to complete the desired task.
4. Programmers need to go "back to the basics," designing programs that can be learned quickly and utilized immediately.
5. Software should be designed to be used in the real world, not in some ideal environment where every user is either a computer expert or wants to become one.
6. Programs should be relevant to today's needs.

Having made our position clear (we hope), we invite you to review the programs we have designed, and to visit us often. We will be adding new programs and we ask that you help us to set our priorities by suggesting areas in which programs are either unsatisfactory or non-existent.

With best regards,  
fCoder Group International  
[www.fcoder.com](http://www.fcoder.com)



## ImageConverter Settings: Options

You can set on this page some general features of destination file(s) and those of the ImageConverter interface. These features will be used for viewing and converting images into any of supported graphics formats.

**Close converter dialog after has finished** -- ImageConverter dialog which is shown during converting will be closed automatically after ending of converting.

**Create log-file** -- ImageConverter will produce a log file with results of converting in the text format. This file would be saved in the current folder or in the **Predefined destination folder** if it was selected on this page.

**Add icon to tray** -- ImageConverter Settings fast launcher icon can be added to the tray.



**Use predefined destination folder** -- If this feature is on and destination folder is chosen, all the results of converting (destination file(s) and log-file) will be saved in it. If this feature is off all the results of converting will be saved in the current folder with source files.

**Show preview in popup menu** -- If this feature is on, you can see a thumbnail of a selected image with a single mouse click.

## ImageConverter Settings: Size

You can set on this page some features for modify a size of destination file(s). These features will be used for converting of files to any of supported graphics formats.

**Modify image size** -- If this feature is on, sizes of converted images will be chosen accord into following rules:

**No more than...** -- If this feature is on, all the destination images that are more than selected **Width** and **Height** will be reduced proportionally up to these sizes.

**Always exactly...** -- If this feature is on, sizes of all the destination images will be reduced proportionally up to selected **Width** and **Height**.

**Method** -- choice of a method of scaling images.

## ImageConverter Settings: to BMP

This page keeps settings of a destination file. Will be used at converting to Windows Bitmap Format.

**Depth** – A depth of the color in a destination image.

**Palettes** – If you selected not a **24 Bit** color depth, you can select any of this options for generating a palette for a color-reduced image.

**Dither methods** – Methods of dithering and/or color reduce an image. Will be used when depth of the color will be modified.

## ImageConverter Settings: to PNG

This page keeps settings of a destination file. Will be used at converting to Portable Network Graphics Format.

**PNG compression** – Specifies compression used on a destination image.

**PNG filter** -- Specifies the filter applied to data before compression.

## ImageConverter Settings: to EPS

This page keeps settings of a destination file. Will be used at converting to Encapsulated Postscript Format.

**Depth** – A depth of the color in a destination image.

**Palettes** – You can select any of this options for generating a palette for a color-reduced image.

**Dither methods** – Methods of dithering and/or color reduce an image. Will be used when depth of the color will be modified.

## ImageConverter Settings: to GIF

This page keeps settings of a destination file. Will be used at converting to Graphics Interchange Format.

**Depth** – A depth of the color in a destination image.

**Palettes** – You can select any of this options for generating a palette for a color-reduced image.

**Dither methods** – Methods of dithering and/or color reduce an image. Will be used when depth of the color will be modified.

**Interlaced/Non-interlaced** -- Specifies the image should be written in the interlaced format.

## ImageConverter Settings: to JPEG

This page keeps settings of a destination file. Will be used at converting to Joint Photographic Experts Group Format.

**JPEG quality** – This option sets the resultant image quality. **0** = worst quality/best compression, **100** = best quality/worst compression. Usually this value defaults to about **75** (depending on the image format).

**Type** – A destination image can be **24 bit color** or **8 bit grayscale**.

**Dither methods** – If you selected **8 bit grayscale** type, you can select a method of dithering an image.

## ImageConverter Settings: to PCX

This page keeps settings of a destination file. Will be used at converting to Paintbrush Format.

**Depth** – A depth of the color in a destination image.

**Palettes** – If you selected not a **24 Bit** depth of color, you can select any of this options for generating a palette for a color-reduced image.

**Dither methods** – Methods of dithering and/or color reduce an image. Will be used when depth of the color will be modified.



## ImageConverter Settings: to TIFF

This page keeps settings of a destination file. Will be used at converting to Tag Image File Format.

**Compress** – A destination image can be uncompressed or compressed with the help of **PackBits** method.

**Artist info** and **Copyright** -- A destination image can contain short information about artist and copyright.

**Fill order** – This specifies that the bits in a byte should be written in reverse order. This is often required for files that are to be faxed.

**Color** – This specifies the color model used when writing the image data.

**Rows/Strip** -- This specifies the number of image lines that should be written in each strip of a TIFF image. By default ImageConverter will create strips about 8K in length which is the recommended size. Normally you would not need to change this option.

## ImageConverter Settings: About ImageConverter

This page keeps short information about the ImageConverter, the version number and a copyright.

To buy the commercial version of ImageConverter, please press the **Buy it** button.

## Support Service

If you have any troubles or questions with using **ImageConverter** or **QuickView**, please notify us by e-mail [imageconverter@fcoder.com](mailto:imageconverter@fcoder.com). We will send an answer to you within two days.

You can download a latest version of **ImageConverter** from Internet. To do it, please enter the URL: <http://www.fcoder.com/ftp/Converter.zip> in your Internet browser.

Using ImageConverter you can convert one or lot of images into any of supported graphics formats

You can convert one or more images using a single mouse click or in the batch mode to any of supported graphics formats.

Results of converting (destination file(s) in a chosen format and log-file) would be saved in the current folder or in the **Predefined destination folder** if it were selected in ImageCinverter settings on the page Options.

## General Information

Using programs of fCoder Group International, you can work with any of supported graphics formats.

Any of our authorized users can get a consultation in our support service. You can authorized any of fCoder programs using our registration service.

Before registration, please see License Agreement.

fCoder Group International is developing a lot of useful and simple programs for you.

## Some programs by fCoder Group International

Just point of the [BackFlip](#) program at any folder that contains images, independently whether it's on your hard drive, a CD-ROM, your local network or Internet. Tell it how often to change your wallpaper (from once a second to once a day), and watch your screen come alive!

With [BackFlip](#) you are not limited to just Windows Bitmap files. You can use JPEG, GIF, TIFF, PCX and Targa images, too.

With the introduction of [HTML Publisher Pro](#), designing a web site has never been easier and the results have never looked better. [HTML Publisher Pro](#) simplifies opening-up of your collection of pictures for publication on the Internet, allowing Webmasters to concentrate on content, not presentation.

When completed, you may then transfer your publication to your ftp server using **PublicationTransfer**. It is provided with [HTML Publisher Pro](#).

[HTML Publisher Pro](#) is very easy to use and well documented - you will find it quickly produces quality results.

[AutoGraphicsHTML](#) uses a simple wizard interface, which allows you to quickly prepare images for publishing onto the WWW. The program handles some graphics images, including JPEG, GIF and Bitmap.

The output is placed in a separate folder and consists of prepared (converted to GIF or JPEG) large images, created thumbnails and HTML files with hyperlinks from the thumbnails to the full-size images.

The created HTML files can have different designs based on several styles provided with

[AutoGraphicsHTML](#). You can also make modifications to the provided styles or create a new style of your own.

[ThnImage.dll](#) is an ISAPI dynamic link library and is an easy way to create thumbnails for your HTML pages "*on the fly*". Bitmap, TIFF, PCX, Targa, JPEG, and GIF images can be converted to GIF or JPEG files for your HTML pages without preparation. You need only to set an image size and image type (GIF or JPEG).

[Look RS-232 Pro](#) is a program for debugging external devices connected to the PC by means of RS-232 (COM Port). [Look RS-232 Pro](#) does this by providing means to monitor and send serial data packets to and from the PC, allowing full duplex communication to the external device.

[Look RS-232 Pro](#) is a full 32-bit application and supports all RS-232 features.

[Look RS-232 Pro](#) is very easy to use and is well documented.

[HiMetric](#) is a nice reference tool for students, engineers and researchers.

Using [HiMetric](#) you can quickly translate a value from one unit of measurement to the other. [HiMetric](#) contain 600+ units of measurement. You can update these bases by Internet.

## Some programs by fCoder Group International: BackFlip

**BackFlip** (Background Flipper) allows you to cycle your wallpaper on any interval you choose - from once a second to once a day. All you need to tell **BackFlip** is:

1. Which images you want to see, either by selecting a complete folder or by selecting individual images from your hard drive, a removable drive, a CD-ROM, any drive on your network and ftp-server;
2. How often to change the images;
3. How to display the images (centered, tiled, or stretched-to-fit).

**BackFlip** automatically converts your graphics files from JPEG, GIF, Targa, TIFF or PCX formats to the Windows Bitmap file format that appears as wallpaper on your desktop.

This allows you to save considerable space on your hard drive, because **BackFlip** dynamically converts each file only when it is displayed.

**BackFlip** resides quietly in your system tray, where you can set its parameters, change the wallpaper without waiting for the selected interval, or even suspend its operation while resource-intensive programs are running.

You can download **BackFlip** from Internet. To do it, please enter this URL:

[http://www.fcoder.com/ftp/\\_backflip.zip](http://www.fcoder.com/ftp/_backflip.zip) in your Internet browser.

## Some programs by fCoder Group International: HTML Publisher Pro

**HTML Publisher Pro** is a powerful HTML publishing tool for working with image collections. A handy wizard-style interface allows you to quickly create framed Web pages that feature object links on the left and full sized objects on the right of the screen.

The menu links can be icons, text, or thumbnails. If you choose to use with the thumbnails, the thumbnail images are created in JPEG format. You can specify the alignment, quality, and size of the thumbnails. You can also used "Alphabetic" or "Numeric" sorting for menu titles (left handle frame with links and thumbnails).

During one of the steps of HTML Publisher Pro, you can indicate your name and title information for the publication. This information will be located on the first page of the publication.

**HTML Publisher Pro** effectively deals with JPEG, GIF, Bitmap, TIFF, Targa, PCX, DCX, EPSF and PNG images. The GIF and JPEG images are left as is, while the others are automatically converted to JPEG. You can also create links to HTML, text, AVI and VRML files. Java applets and background images are also supported.

Upon completion of your publication you may transfer it to your FTP server using **PublicationTransfer** which is included with **HTML Publisher Pro**.

**HTML Publisher Pro** is very easy to use and well documented -- you'll find it quickly produces quality results.

You can download **HTML Publisher Pro** from Internet. To do it, please enter this URL:  
[http://www.fcoder.com/ftp/pub\\_pro.zip](http://www.fcoder.com/ftp/pub_pro.zip) in your Internet browser.



## Some programs by fCoder Group International: AutoGraphicsHTML

If you want to quickly prepare a HTML page containing many images and easily upload it to your web server then you should use **AutoGraphicsHTML**. Using a simple wizard interface, the program will convert the images you select to GIF or JPG and will arrange these images and thumbnails (which it also creates) to HTML pages and will organize all hyperlinks. You can select from several styles (or create your own style) for the HTML, giving a professional, unified look to your publication.

### **AutoGraphicsHTML** *features:*

1. Quickly convert your image collection for publishing to the Internet;
2. Prepare your images with one or more different styles from style sheet;
3. Custom editing any style from style sheet;
4. Create your own styles and add them to style sheet;
5. Arrange your images into HTML pages;
6. Create thumbnails from your images and arrange them to HTML pages;
7. View and edit the created HTML documents before uploading;
8. Easy transfer the output of **AutoGraphicsHTML** to your web server.

You can download **AutoGraphicsHTML** from Internet. To do it, please enter this URL:

[http://www.fcoder.com/ftp/\\_agraph.zip](http://www.fcoder.com/ftp/_agraph.zip) in your Internet browser.

## Some programs by fCoder Group International: ThnImage.dll

**ThnImage.dll** is a ISAPI dynamic link library which is loaded onto your web server.

These libraries allow you to use files in any of six formats (BMP, GIF, TIFF, JPEG, TARGA, PCX) in your HTML pages. You need only set the size of the image and its type (GIF or JPEG).

### **Instruction for use:**

#### **1. Sharing:**

ThnImage.dll, PicObject.dll, ImageLoad.dll should be in "web shared" directory with options "Executed scripts" as "on".

#### **1. Syntax:**

```
<p></p>
```

[WIDTH] - image width (thumbnail);

[HEIGHT] - image height (thumbnail),

[IMAGETYPE] - JPG or GIF,

[PARAM] - quality of JPEG file. For GIF file this parameter is 0.

[BIGIMAGEPATH] - full path to a full size image.

### **Example of use:**

```
<p></p>
```

You can download **ThnImage.dll** from Internet. To do it, please enter this URL:

<http://www.fcoder.com/ftp/ThnImage.zip> in your Internet browser.

## Some programs by fCoder Group International: Look RS-232 Pro

**Look RS-232 Pro** is a power tool for debugging any external device, connected to the PC by means of RS-232 (COM Port). **Look RS-232 Pro** supports all RS-232 features.

*Table 1. Supported com-port initialization features.*

<b>Features</b>	<b>Values</b>
Data transfer speed, bodes	110-115200
Data bits	5-8
Stop bits	1/1.5/2
Com port numbers support	1-4
Parity control	none/even/odd/mark/space
Flow control	none/software(xon/xoff)/hardware(rts/cts)/hardware and software

*Table 2. Supported data types for sending*

<b>Data types</b>	<b>Comments or samples</b>
Hexadecimal data lines	11 2a 7b 88 d2 f0
Macros	You may save any hexadecimal line in a macros. Initialize macro once in the "macro" panel and use it repeatedly.

*Table 3. Real time monitored properties.*

<b>Properties</b>	<b>Values</b>
Rthreshold	True/False
Sthreshold	True/False
Parity	none/even/odd/mark/space
DTR	True/False
Carrier detect [DCD]	True/False
Clear to send [CTS]	True/False
Data send ready [DSR]	True/False

You can download **Look RS-232 Pro** from Internet. To do it, please enter this URL:  
[http://www.fcoder.com/ftp/\\_lrs232.zip](http://www.fcoder.com/ftp/_lrs232.zip) in your Internet browser.

## Some programs by fCoder Group International: HiMetric

**HiMetric** is a nice reference tool for students, engineers and researchers.

Using HiMetric you can quickly translate a value from one unit of measurement to the other. **HiMetric** contains 600+ units of measurement. You can update these bases by Internet.

**HiMetric** support:

Length (46 units), Mass (43 units), Electronic (computer) memory (15 units), Time (27 units), Energy (49 units), Pressure (36 units), Force (27 units), Volume (84 units), Area (56 units), Power (27 units), Temperature (6 units), Speed of straight-line running (57 units), Acceleration of straight-line running (19 units), Brightness of light (4 units), Force of light (2 units), Electric charge (21 units), Electric current (20 units), Electric voltage (20 units), Electric resistance (18 units), Electric capacity (18 units), Electric inductive (20 units).

Do you need more units of measurement? Please notify us by [himetric@fcoder.com](mailto:himetric@fcoder.com) which and we will add it (or them) to base. You will be able to update your copy of **HiMetric** bases by Internet.

You can download **HiMetric** from Internet. To do it, please enter this URL:  
[http://www.fcoder.com/ftp/\\_hmetric.zip](http://www.fcoder.com/ftp/_hmetric.zip) in your Internet browser.

