



IconMini

(Version 1.5 9 August 1995)

Overview

History

The Menu

Setup

Run Program

Registration

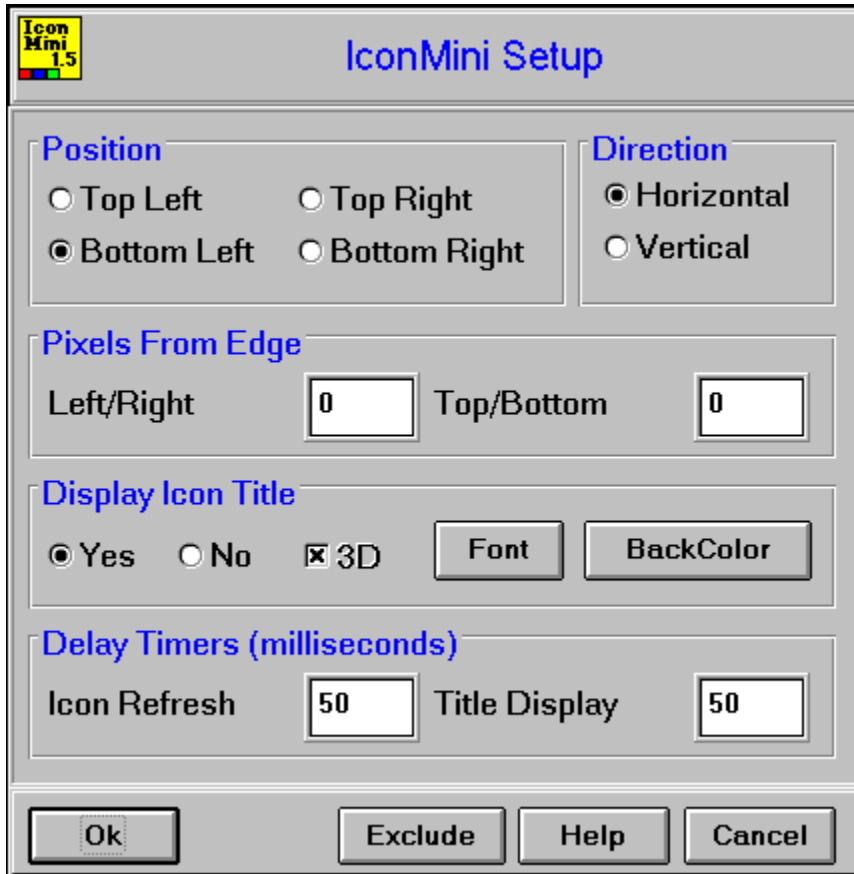
How To Contact Author



IconMini

Setup

Click on the setup option you require help on.



The image shows a dialog box titled "IconMini Setup" with a version number of 1.5. The dialog is organized into several sections:

- Position:** Four radio buttons for "Top Left", "Top Right", "Bottom Left", and "Bottom Right". "Bottom Left" is selected.
- Direction:** Two radio buttons for "Horizontal" and "Vertical". "Horizontal" is selected.
- Pixels From Edge:** Two input fields. "Left/Right" is set to 0 and "Top/Bottom" is set to 0.
- Display Icon Title:** Radio buttons for "Yes" and "No", and a checked checkbox for "3D". There are also "Font" and "BackColor" buttons.
- Delay Timers (milliseconds):** Two input fields. "Icon Refresh" is set to 50 and "Title Display" is set to 50.

At the bottom of the dialog are four buttons: "Ok", "Exclude", "Help", and "Cancel".

There are two 'timers' used in IconMini.

The first is the Icon Refresh timer which specifies the number of milliseconds before the icons are refreshed.

The second is the Title Display timer which specifies the number of milliseconds the cursor must stay on an icon before the title is displayed.

This sets if the title is to be shown, and how the text will be displayed.

The 'Yes'/'No' option specifies if the title is to be displayed when the cursor passes over the icon.

The '3D Title' check box indicates if the title text is to be displayed in 3D format.

The 'Font ...' button selects the font to use, and the color of the font.

The 'BackColor ...' button selects the bgcolor of the title box.

The corner of the windows desktop that the minimized icons will be placed is specified by selecting the appropriate option in the Icon Display Position group on the setup form.

The Icons, once minimized, can be placed horizontally or vertically by selecting the appropriate option in the Icon Display Direction group on the configuration screen.

Saves the selected settings to ICONMINI.INI, makes the changes and then closes the setup form.

Displays the About dialog box.

This closes IconMini and unload it from memory.



IconMini

Overview

IconMini is a Windows desktop utility designed to reduce the clutter of minimized icons.

It accomplishes this by organizing the minimized icons on the standard Windows desktop either horizontally or vertically, into a selected corner of the desktop.

When organizing the icons the icons titles are hidden. For most users this may be welcomed, but for those that still like to know what the title of the icon is, IconMini can be set to display the title when the cursor rests on the icon for a specified length of time.

Additional features include Windows Exit/Restart/Reboot, and to Run a Program.

The program has been written in Visual Basic 3.0.

Any suggestions on how to improve it will be greatly appreciated.

A future C++ version will be developed once I come to grips with C++. This will allow me to produce both a 16bit and a 32bit version, without the VBRUN300.DLL overhead.



IconMini

Registration

Registration costs US\$10 and includes:

- A licence to use IconMini after a 30 day evaluation period (The licence will be posted to you on payment)
- E-mail support through the Internet
- Discounts on future upgrades

----- PAYMENT OPTIONS -----

Payment can be made by international postal money order, Australian bank cheque or cash.

Payment by cheque must be from an Australian Bank in Australian dollars.

Site licenses: a site license for IconMini entitles an organization to receive one copy of the distribution package and duplicate the distribution disk for the specified number of computers.

ICONMINI 1.5 REGISTRATION FORM / INVOICE

Remit to: Paul Jakins
 12 Rochele Court
 Woodvale, 6026
 Western Australia

Single copy: _____ copies at US\$10 each = _____

Site License

5 to 19 computers: _____ at US\$8 each = _____
 20 to 49 computers: _____ at US\$6 each = _____
 50+ computers: _____ at US\$5 each = _____

Total payment = _____

Name: _____ Date: _____

Company: _____

Address: _____

City, State, Zip: _____

Country: _____

Day Phone: _____ Eve: _____

E-mail Address: _____

How did you hear about IconMini?

Suggestions/Comments:



IconMini

History

Version 1.5 - 9 August 1995



Added ability to Exclude program icons from being 'managed'.



Clicking on the drive letter in the Directories box in the Run Program performs a refresh of the drive.

Version 1.4 - 5 June 1995



Allowed Pixels From Edge settings to include up to half an icon width (16 pixels) in negative to further increase clear desktop area.



The Run Program function is now separate slightly reducing the size of IconMini. This function can be used without IconMini having to be loaded.



Added context sensitive help.

Version 1.3 - 9 February 1995



Added Pixels From Edge settings to move icons away from the edge of the screen.



Added Font selection and attribute setting for the displayed title.



Added BackColor selection for the displayed title's background.



Improved the logic behind the icon positioning, and the display of the title.

Version 1.2.1 - 29 January 1995



Added a 3D option for displaying the Icons titles.



Changed Program Run function to allow the double clicking of the left mouse button to run the highlighted file.

Version 1.2 - 23 October 1994



Added Popup Menu when IconMini button pressed.



Added Windows Exit/Restart/Reboot functions.



Added Program Run function.



Changed Configuration screen: Reduced size; Save/Reset buttons changed to Windows standard OK/Cancel buttons; Unload/About buttons removed and replaced by Close/About options in popup menu.



All 3D text changed to normal text for improved readability.

Version 1.1 - 28 August 1994



Added Windows help File.



Added Reset button to configuration.

Version 1.0 - 20 July 1994 (Original Release)

Cancels any changes made to the setup options and closes the setup form.

Displays this help file.



IconMini

How To Contact Author

The Author can be contacted by:

postal mail: Paul Jakins
12 Rochele Court
Woodvale 6026
Western Australia

E-Mail Internet: paulj@cougar.multiline.com.au

This will cause Windows to close down, returning control to the DOS prompt.

This will cause Windows to close down, and then Restart.

This will close down Windows, and then reboot the computer.

Displays a dialog box which allows the selection of a program to run. It also allows for the entry of parameters.

This brings up the IconMini Setup form.

Displays this Help file.



IconMini

Menu



By clicking on the IconMini Bar the popup menu will be displayed. For more information on the menu items click on the option below.

IconMini Menu
Setup Close
About Help
Exit Windows Restart Windows Reboot PC
Run Program

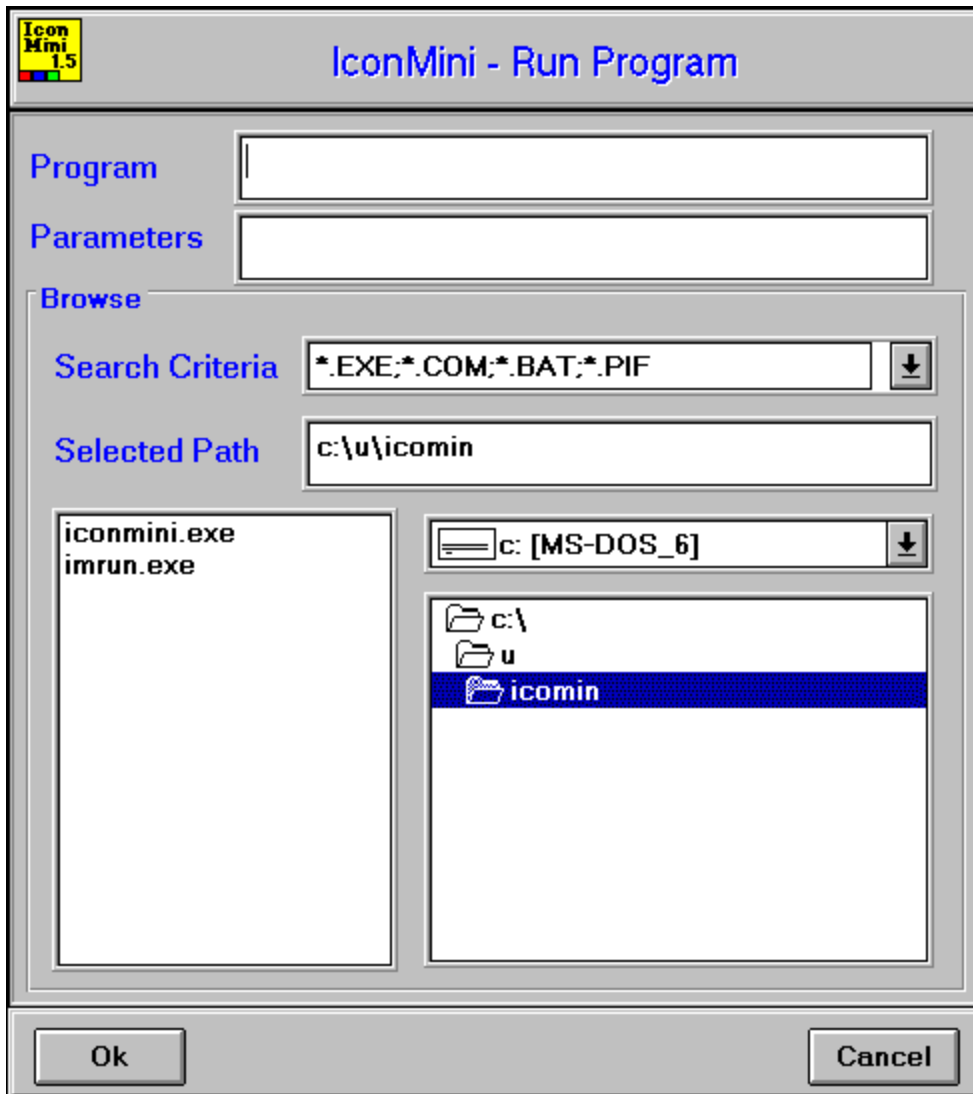


IconMini

Run Program

Allows the selection of a program to run either by manually entering the program details, or by browsing the files attached to the computer.

Click on the area you require help on.



Identifies the program to be run. Using the browsing facility this will be any COM, EXE, BAT or PIF file.

Any parameters required by the program can be entered here.

Displays any COM, EXE, BAT or PIF files in the currently selected directory on the currently selected drive.

A single click on a file will place the file name in the Program field.

A double click on a file will run that program, if valid.

Selects drive.

Displays the directories available on the drive. Double clicking on the required directory will select it. Until it is selected the Files will not be displayed.

Runs the selected program with any parameters that have been entered.

Exits the Run Program Dialog.

Defines filter for files displayed in Files box. Selection can be by using the dropdown list, or by manually entering filter pattern.

Displays the currently selected path.

This allows the icons to be adjusted so that they are moved away from the edges of the screen.

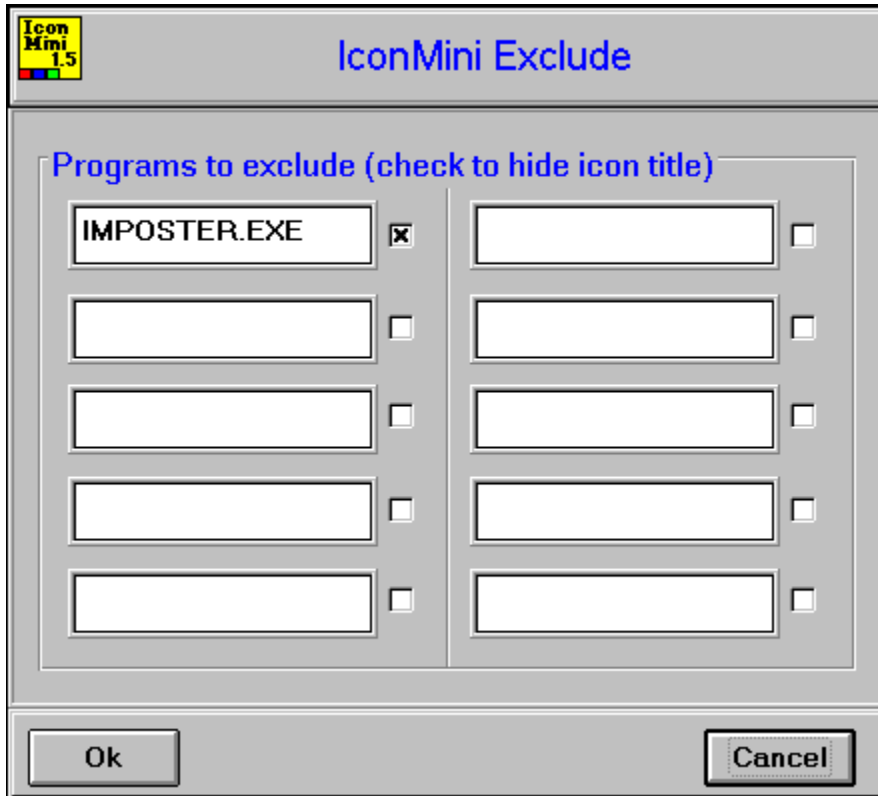
Adjustments can be made against the left/right edges and the top/bottom edges. Valid pixel values are between -16 and 99. The negative values allow for the desktop area to be further increased by only showing a portion of the icons.



IconMini

Exclude

Allows program icons to be excluded from being managed by IconMini.



Saves the selected programs for exclusion.

Exits from the Exclude form without making any changes to the exclusions.

Specifies the program name for which the icons are not to be managed.

The path is not included in the name, but the name must include the filename's extension.
For example 'IMPOSTER.EXE' is a valid entry.

If checked, this will tell IconMini to hide the text associated with the Icon, while not including the Icon in the managed Icons.

