

Table of Contents

[Introduction \(READ ME!\)](#)

[What's New?](#)

[Windows 95 vs. Windows 3.1](#)

[Main Window / Menu](#)

[Setup MIDI Ports](#)

[Advanced Gravis UltraSound](#)

[Thanks and Acknowledgments](#)

[Technical Support](#)

[Pre-Release?](#)

[Why Register?](#)



TM

Advent95TM

1995 General MIDI Advent Calendar

Copyright © Jeff Cazel, 1992-1995

All Rights Reserved

What's New?

This topic summarizes the changes in recent releases of **Advent95**. Early releases list major changes only. Please be sure to read the **Notes** at the end of this help topic (last updated August 1995).

Version(s)	Release Date	Enhancements and Bug Fixes
2.02	September 1995	Enhances help file to explain how to process Reg Pack files. This will probably be the last Windows 3.1 release.
2.01	August 1995	Synchronizes Windows 95 and Windows 3.1 at version 2.01; changes Internet e-mail address to jeff@powerjam.com .

Introduction to Advent95

Welcome! We hope you enjoy **Advent95**. If you already had an earlier version of **Advent95**, be sure to also check out [What's New?](#) for additional important information.

Jeff Cazel
PowerJam Systems
September 1995
Internet: jeff@powerjam.com CompuServe: 72461,3345

Overview

Advent95 is an Advent Calendar for 1995 that plays a different Christmas carol each day. Larry Roberts has created beautiful arrangements of forty public domain carols. When you select the appropriate day from the **Advent95** screen, you'll read that day's Bible verse accompanied by beautiful music. And **Advent95** lets you choose between the New International and King James Versions of the Holy Bible.

Advent95 can also serve as a source of background music during your Christmas season, too; in its album-play mode, **Advent95** will randomly play its forty songs for as long as you wish.

Advent is now an annual event—a new program will arrive each year. We plan several enhancements over the years, including displaying carol lyrics and Spanish Bible verses. Please send us your suggestions to improve **Advent!**

For 1995, there are versions for both Windows 95 and Windows 3.1. The **Advent95 archive** file contains both versions, and [registering](#) entitles you to both versions. See [Windows 95 vs. Windows 3.1](#) for more details.

Minimum System Requirements

For Windows 95 Version

Microsoft Windows 95, mouse or other pointing device, 256-color video
General MIDI device with Windows driver, including [Gravis UltraSound](#)

For Windows 3.1 Version

Microsoft Windows 3.1, mouse or other pointing device, 256-color video, 386sx
processor
General MIDI device with Windows driver, including [Gravis UltraSound](#)

Note: computers without MIDI can still use **Advent95**; they simply will not be able to play any music. Similarly, 16-color video drivers will work, but the Advent scene will be ugly.

Quick Start

- 1 **Run SETUP** and follow the instructions on the screen.
- 2 **Start Advent95**—For Windows 95, select **Advent95 for Windows 95** from the **PowerJam Systems** folder. For Windows 3.1, double-click on the **Advent95** icon in

the **PowerJam Systems** Program Manager group.

3 Read the opening dialog box's instructions and you're on your way!

Legal Information

Advent95 is a copyrighted program—you may not change it in any way. You may not reverse engineer, decompile or disassemble the software.

PowerJam Systems hereby disclaims any and all warranties relating to this software and documentation both express and implied, including any merchantability or fitness for a particular purpose. **PowerJam Systems** will not be liable for any incidental, consequential, indirect or similar damages due to loss of data or any other reason. The person using the software bears all risk as to the quality and performance of the software.

Advent95 and the sunglassed Beethoven are trademarks of Jeff Cazel.

The marketing concept known as 'shareware' allows you to evaluate a working program to determine what it is worth to you, and then buy it if you are going to use it. **Advent95** is not a free program. If you like it, register ("buy") **Advent95** by sending us \$20 US. If you don't think **Advent95** is worth it, please let us know why—we will see if we can satisfy you with the next version.

Upon registering, you will receive your personal Registration Information. **PowerJam Systems** strictly prohibits you from giving this Registration Information to anyone in any format whatsoever. Distributing this information would immediately void your license.

Registering enables access to the enhanced features of **Advent95**, including album play mode.

Please help us distribute **Advent95** as widely as possible (thanks!) by making sure all of your favorite bulletin boards have a current copy of the **official Advent95 archive** file (the official archive displays *Authentic files Verified! #VHI634 Jeff Cazel* above your DOS prompt upon dearchiving—be sure to look for it!). You may freely distribute **Advent95** as long as you include only the unmodified **Advent95 archive** file (i.e., the unregistered version) and you charge no money except for a maximum copying fee of \$10 US.

You are welcome to include the unregistered version of **Advent95** (i.e., the unmodified **Advent95 archive** file by itself) on your shareware CD-ROM collections, etc., as long as you notify us that you plan to do so (either via e-mail or a phone call). Note that **PowerJam Systems** has a version tailored for CD-ROMs (i.e., it contains encrypted versions of the registered user files)—please e-mail us for details.

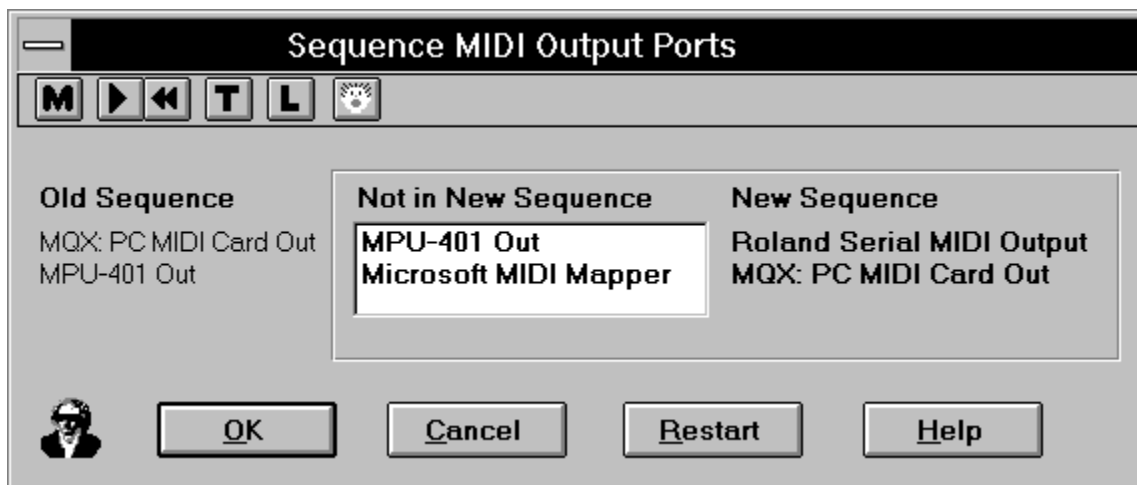
Finally, the help system contains a ready-to-print **Order Form** for all **PowerJam Systems** shareware programs. The Order Form also explains how CompuServe users can register **Advent95** online (program #4329).

Setup MIDI Ports

(This help topic does not apply at all to Windows 95 users. In addition, most Windows 3.1 users will not need to read this topic, since the default should work correctly. See [Windows 95 vs. Windows 3.1](#) for more details.)

Setting up your MIDI ports consists of the **Setup-Select Output Port** menu option and the **Setup-Sequence MIDI Output Ports** dialog box. Both **Select Output Port** and **Sequence MIDI Output Ports** [lock JJCMOD16.DLL](#).

Select Output Port lists each MIDI port you have sequenced (see below) and places a check mark to the left of the port that **Advent95** is currently using. To change to a different port, simply select it from the **Select Output Port** menu. (If the menu does not list the desired output port, you must run the **Sequence MIDI Output Ports** dialog first (as shown below).)



If you have more than one output port, you can have **PowerJam Systems** programs use some or all of them. To do so, sequence the output ports to match your multi-port MIDI files. Do so by double-clicking, in order, on the relevant ports in the **Not in New Sequence** column (this will move them to the **New Sequence** column). For example, the picture above shows that I am changing my sequence from the MQX as #1 and the MPU-401 as #2 (**Old Sequence**) to the Roland Serial as #1 and the MQX as #2 (**New Sequence**). If I want to, I can still add the MPU-401 and the MIDI Mapper to the **New Sequence** column as #3 and #4 before selecting **OK**.

In summary, when you select **OK**, the **New Sequence** takes effect. If you select **Cancel**, however, the **Old Sequence** remains in effect.

If you have a [single](#) MIDI interface like most of us, you can simply move it by itself into the **New Sequence** column.

If you sequence the ports incorrectly, select the **Restart** button to move all **New Sequence** ports

back to **Not in New Sequence**. You can then restart sequencing your ports.

SMOP_Old

SMOP_Not

SMOP_New

Windows 95 vs. Windows 3.1

We will enhance the **Advent** series each year. Since the 1995 world is in transition from Windows 3.1 to Windows 95, Advent95 contains a version for each operating system. However, all future enhancements will concentrate on the Windows 95 version.

Some enhancements already differentiate the two:

1 — the Windows 95 version is totally separate from **CanvasMan** and thus does not need the *Sequence MDI Output Ports* dialog. Instead, you can select any MIDI port at any time without having to first ‘sequence’ it.

2 — the Windows 95 version does not need to ‘lock the DLL’; this, too, is due to its **CanvasMan** independence.

3 — the Windows 95 version does not ‘stretch’ the Advent picture(s) to fill the screen. This results in a better looking scene.

4 — the Windows 95 version substitutes a settings dialog box for a menu.

Registering entitles you to both programs.

Advent95 Archive File

PowerJam Systems creates the official **Advent95** archive file by packing all necessary files into a maximally-compressed PKZIP 2.04 archive. We also use PKZIP's authenticity verification feature; this helps ensure that no one has tampered with the archive file that you download. When you PKUNZIP the archive, the process will end by displaying

```
Authentic files Verified!   # VHI634  
Jeff Cazel
```

Please be sure to look for this authenticity verification message.

Note that simply renaming the archive file does not cause any problems. In fact, many bulletin board systems prefer that the ZIP filename contains version information (e.g., AC95_202.ZIP for **Advent95** version 2.02). Thus, feel free to rename the archive file when you upload it, but do not add your own ZIP comments, do not add or remove any files, etc.—future downloaders have no idea what else, if anything, might have been tampered with. Thank you for adhering to this policy.

Locking JJCMOD16.DLL

(This help topic does not apply at all to Windows 95 users. See [Windows 95 vs. Windows 3.1](#) for more details.)

All of our Windows 3.1 programs use JJCMOD16.DLL to centrally coordinate MIDI input and output (“MIDI I/O”). Because of this, it must protect itself from certain combinations of activity. For example, it cannot allow you to run the *Define Synths* dialog in **CanvasMan** while running *Sequence Ports* in **Advent95**. If it **did** allow this, you could give yourself an instant GPF by unsequencing the MIDI Mapper in **Advent95** and then selecting it in **CanvasMan**’s *Define Synths*. JJCMOD16.DLL guards against this by having the following activities “lock” the DLL until they finish; i.e., they temporarily prevent you from running other programs that use JJCMOD16.DLL:

Setup MIDI Ports

PowerJam Systems Fanfare (four notes from Beethoven’s 5th on [Help-About Advent95](#) screen)

Main Window / Menu

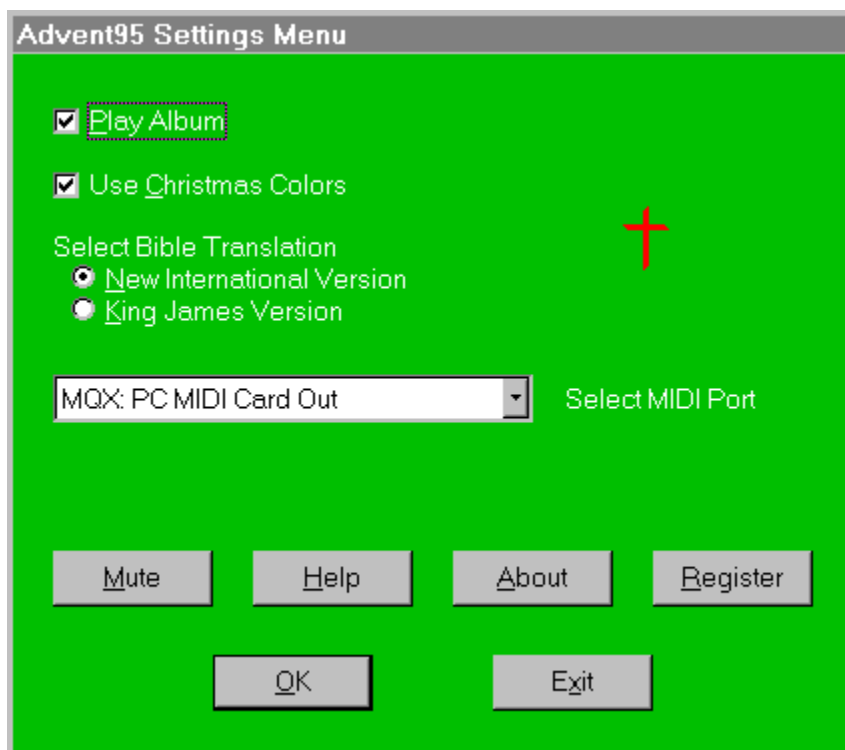
Advent95's main window consists simply of a Christmas-oriented picture (**registered** users can change this to any picture they like). This window is a 5x5 matrix that creates a 25 day Advent Calendar (one cell for each December day through Christmas). As you move the cursor through this matrix, its shape changes to note the underlying date. When it assumes the desired shape (e.g., 24 for Christmas Eve), simply left click to display that day's verse and play its carol.

Advent95's menu does not normally display so as not to interfere with the Christmas scene. To display the menu, however, simply click the right mouse button whenever a Bible verse is not displaying.

Advent95 has keyboard accelerators for *Mute* (Ctrl+M), *Play Album* (Ctrl+P), and *Exit* (Alt+F4).

Menu—Windows 95 Version

Advent95's menu consists of a settings dialog box:



You can toggle Album Play mode by selecting the **Play Album** checkbox. Album Play mode, available to **registered** users only, plays all forty songs in random order (i.e., like a huge record album).

You can toggle the color motif by selecting the **Use Christmas Colors** checkbox. **Advent95** always starts in Christmas color mode.

You can select between the New International and King James versions of the Bible via the **Select Bible Translation** radio buttons.

You can choose a MIDI output port via the **Select MIDI Port** combobox.

The **Mute** button stops the song (if playing) and sends “all notes off” and “reset all controllers” messages on each MIDI channel of the output port.

The **Help** button displays the [table of contents](#) for **Advent95**’s online help system.

The **About** button displays the sunglassed Beethoven trademark and plays the **Advent95** fanfare. Its purpose is to list copyright and program version information.

The **Register** button allows newly [registered](#) users to enter their Registration Information.

The **OK** button closes the settings menu and redisplay the Advent scene.

The **Exit** button terminates **Advent95**.

Menu—Windows 3.1 Version

Advent95’s main menu consists of five options: Setup, Play Album, Mute, Help, and Exit.



Setup Menu

[Setup-Select Output Port](#) (see)

[Setup-Sequence MIDI Output Ports](#) (see)

Setup-Use Christmas Colors

This option allows you to alternate between using your default system colors and **Advent95**’s red, green and white motif. **Advent95** always starts in Christmas color mode.

Setup-Register

This option allows newly [registered](#) users to enter their Registration Information.

Play Album

This option, available to [registered](#) users only, plays all forty songs in random order (i.e., like a huge record album).

Mute / Panic Button

This option stops the song (if playing) and sends “all notes off” and “reset all controllers” messages on each MIDI channel of each **sequenced** MIDI port.

Help Menu

Help-Contents

This option displays the **table of contents** for **Advent95**'s online help system.

Help-Search for Help on

This option displays the list of cross-referenced **Advent95** help keywords. You can search for information on any indexed word or phrase as listed here.

Help-How to Use Help

This option displays Windows' own 'how to use help' tutorial.

Help-About Advent95

This option displays the sunglassed Beethoven trademark and plays the **PowerJam Systems** fanfare. Its purpose is to list copyright and program version information.

Exit—terminates **Advent95**.

Why Register Advent95?

Users gain several benefits by registering. Perhaps most importantly, they can play all forty-two songs in random order by selecting **Advent95**'s 'album play' mode—great for background music during the Christmas season. Secondly, they are able to download a large 'registered user package' ("**Reg Pack**").

The **Reg Pack** consists, so far, of two archive files. Archive #1 contains **Advent95**'s forty-two carols as discrete Type 1 MIDI files—complete with karaoke-style lyrics. Archive #2 contains several replacement pictures for the Advent scene. There are some nicely scanned prints, and there are some animated Christmas scenes. (Registered users can replace our scene with any valid Windows bitmap file (*.BMP) by copying it into the **Advent95** directory and naming it ADVENT95.BMP.)

Lastly, by registering your copy of **Advent95**, you help ensure that we continue creating new programs each year at Christmastime. It will take a lot of effort to develop this into the program we envision, so we hope we can afford to do so. Thanks for understanding.

Important notes: to maximize the speed with which we can 'send' you the **Reg Pack**, we've opted to make the files available for downloading. **[Click here for easy-to-follow instructions on processing the RegPack files.](#)**

See the **Reg Pack** topic for a description of all files.

Why a “Pre-Release” Advent95?

We released this preliminary version of **Advent95** in October 1995. The main reason we pre-released it was to let people know that there will be an **Advent95** closer to Christmastime. You are welcome to include the unregistered version of **Advent95** (i.e., the unmodified **Advent95 archive** file by itself) on your shareware CD-ROM collections, etc., as long as you notify us that you plan to do so (either via e-mail or a phone call). (We can ftp or e-mail the then-current version, too.)

We will resume working on **Advent95** in November 1995; new versions will continue to appear up until the calendar’s ‘start’ date of December 1. They will be available for download on several BBS throughout the world; definitely on those **BBS** listed in this help database, including **CompuServe** and the **PowerJam Systems Bulletin Board**.

Depending on our day job workloads, the final release of **Advent95** will contain these features:

Screen Saver—we might convert **Advent95** into a screen saver.

Karaoke—we might display the lyrics of each carol as they play.

Pretty Bible Verse Display—currently, the verse displays in a standard Windows message box. We’d like to enhance this, though we haven’t worked out a design yet.

Expanded Reg Pack—we will probably have more songs and/or pictures included.

Windows 95—the Windows 95 version still looks like a Windows 3.1 program. We might have time to change this.

Notes:

1 — do not assume that any of these changes will make their way into the **Advent95** final release version.

2 — any changes will appear only in the Windows 95 version.

Thanks...

Thank you very much **Dan McKee, Larry Roberts, John Cowles, Jacqui Kinnie, Lodi Claessen** and **Ron Robbins!**

Dan McKee provided a lot of help in converting **Advent95** into a Windows 95 program. Thanks a lot Dan!

The quality of Larry's efforts are obvious anytime you start a song. He arranged and sequenced forty Christmas carols for this project. He also researched the history of each song and provided it in a Write file for our enjoyment.

John gave some good design suggestions, created the **Gravis UltraSound** patch file and wrote the GUS help topic. But more importantly, as Larry puts it,

I want to express a special thanks to John Cowles for his invaluable assistance during the preparation of these carols and their descriptions. He not only helped to proofread the song files, the lyrics and histories of the carols but brought to my attention several carols with which I was completely unfamiliar. He also provided valuable feedback on the various arrangements I made and his encouragement made the task of putting this music into a listenable form a great pleasure.

Jacqui Kinnie, CompuServe's *Sight and Sound* forum sysop, contributed several works of art to the **Advent95** project, including the beautiful winter scene contained in the **unregistered** program. The **Reg Pack** contains several more examples of her craft. Contact Jacqui at Blue Valley DesignWorks at 1-800-545-6172. Artwork used by permission of Jacqui Kelley Kinnie.

Lodi and Ron came up with several good design ideas during the beta testing.

Thanks again for the help!

...and Acknowledgments

NIV Scripture taken from the HOLY BIBLE, NEW INTERNATIONAL VERSION. Copyright © 1973, 1978, 1984 International Bible Society. Used by permission of Zondervan Bible Publishers.

MIDI Programmer's ToolKit for Windows, Copyright © 1994, by Paul A. Messick and Music Quest, Inc.

Advent95 Registration Pack

[\(Click here for instructions on 'how to process the RegPack files'.\)](#)

As described in the [Why Register?](#) topic, registered users can download extra files to enhance **Advent95**. This topic describes those files. Please be sure to check this topic after each download, since the list might expand.

Note: do NOT download these files unless you are (or plan to become) a **registered Advent95** user. Unregistered users will not be able to extract the files from the archive.

AC95REG1.EXE contains the first batch of Registration Pack files. It has forty-two public domain Christmas Carols in Type 1 Standard MIDI File Format, including karaoke-style lyrics.

AC95REG2.EXE contains the second batch of Registration Pack files. It has twelve Advent Calendar scenes in Windows Bitmap file format. **Registered users** can replace the **Advent95** picture with any one of these scenes by copying it into your **Advent95** directory as ADVENT95.BMP.

***** *If you obtained **Advent95** on a shareware CD-ROM collection, it might already contain the **AC95REG1.EXE** and **AC95REG2.EXE** files. In addition, **AC95REG1.EXE** and **AC95REG2.EXE** will reside on the PowerJam Systems [ftp site](#) from Thanksgiving through Christmas.* *****

All carol file extensions are .MID (e.g., *All Bells in Paradise* is ALLBELLS.MID). All pictures have the .BMP file extension (e.g., Larry's nativity scene is NATIVITY.BMP).

ALLBELLS	<i>All Bells In Paradise</i>
ANGELSFR	<i>Angels From The Realms of Glory</i>
ANGELSW	<i>Angels We Have Heard On High</i>
AWAYINA	<i>Away In A Manger</i>
BIRTHDAY	<i>Birthday Of A King</i>
BOARSHE	<i>The Boar's Head Carol</i>
BRIGHTES	<i>Brightest & Best The Sons of the Morning</i>
BRINGATO	<i>Bring A Torch, Jeanette Isabella</i>
CHRISISC	<i>Christmas Is Coming</i>
COVENTRY	<i>The Coventry Carol</i>
DECKTHEH	<i>Deck The Halls</i>
FIRSTNO	<i>The First Noel</i>
GLOUCHES	<i>The Gloucester Carol</i>
GODRESTY	<i>God Rest Ye Merry Gentlemen</i>
GOODCHRI	<i>Good Christian Men, Rejoice</i>
GOODKING	<i>Good King Wenceslas</i>
HARKTHE	<i>Hark! The Herald Angels Sing</i>
HEREWECO	<i>Here We Come a-Wassailing</i>
HOLLYAND	<i>The Holly & The Ivy</i>

IHEARDT	<i>I Heard The Bells On Christmas Day</i>
ISAWTHRE	<i>I Saw Three Ships</i>
ITCAMEUP	<i>It Came Upon A Midnight Clear</i>
JINGFAN	<i>Jingle Bells (original version; excerpted to become Advent fanfare)</i>
JINGLE	<i>Jingle Bells (original version)</i>
JINGLEBE	<i>Jingle Bells</i>
JOYTOTHE	<i>Joy To The World</i>
LOHOWARO	<i>Lo How A Rose Ere Blooming</i>
MASTERSI	<i>Masters In This Hall</i>
OCHRISTM	<i>O Christmas Tree</i>
OCOMEALL	<i>O Come, All Ye Faithful</i>
OCOMEOC	<i>O Come, O Come Emmanuel</i>
OHOLYNIG	<i>O Holy Night</i>
OLITTLET	<i>O Little Town of Bethlehem</i>
ONCEINRO	<i>Once In Royal David's City</i>
PATAPAN	<i>Patapan</i>
SILENTNI	<i>Silent Night</i>
TWELVEDA	<i>The Twelve Days of Christmas</i>
UPONTHEH	<i>Up On the House Top</i>
WETHREEK	<i>We Three Kings</i>
WEWISHYO	<i>We Wish You A Merry Christmas</i>
WHATCHIL	<i>What Child Is This</i>
WHILESHE	<i>While Shepherds Watched Their Flocks</i>
ADV95	<i>A variation on the Advent95 scene; created by Jacqui Kinnie. 640x480x256</i>
ADVENT95	<i>The standard Advent95 scene; created by Jacqui Kinnie. 640x480x256</i>
BUNNY	<i>Snowshoe rabbit with little girl; created by Jacqui Kinnie. 640x480x256</i>
CAROLERS	<i>A family of carolers; created by Larry Roberts. 639x479x256</i>
CHILD2	<i>Two Victorian children playing in the snow; created by Jacqui Kinnie. 640x480x256</i>
FOOTBALL	<i>Santa carrying the last batch of presents onto the sleigh; created by Larry Roberts. 640x480x256</i>
KK	<i>Cover from the sheet music <i>The Kris Kringle March</i>, published in 1867. Scanned by John Cowles. 640x480x256</i>
NATIVITY	<i>Nativity scene; scanned by Larry Roberts. 554x440x256</i>
SANTA	<i>Santa is confused after entering a house through its wood stove; created by Larry Roberts. Compiled with clip art from Corel Draw and Corel Gallery and was prepared by using PhotoFinish. Used by permission of</i>

SNOWSTAR *Corel. 640x440x256*
Winter snowscene with star; created by Jacqui Kinnie.
640x480x256

TOYLIST *Interplanetary Santa checking out large customer*
database; created by Jacqui Kinnie. 640x480x256

TREES *Scenic trees in the snow; created by Jacqui Kinnie.*
640x480x256

Advanced Gravis UltraSound Support

Thanks to John Cowles for this information and help topic. If you have any problems using your GUS with **Advent95**, feel free to contact John on CompuServe at #72074,451 or on the Internet at cowles@hydra.convex.com

How to use Advent95 with your GUS

Because **Advent95** is not a patch-caching application, we have included a configuration file to use with the GUS Patch Manager.

To use the configuration file, open the Patch Manager, and in the 'FILE' menu, click on 'Load configuration...'

Change to the directory where **Advent95** is installed and load the file 'GUSINIT.PCF'

After this file is loaded, you may exit Patch Manager and start **Advent95**.

Note that the patches used in Advent95 require 900KB of memory on your GUS, so you will need to have a full megabyte installed in order to hear all the instruments correctly.

Because you may want to substitute your own patches for those which are standard from Gravis, we have included a full list of all the patches used below.

The carols used in **Advent95** were originally voiced for a Roland Sound Canvas, and some of the GUS patches are louder or softer than those on other synthesizers. Because of this, you *might* want to use the GUS program "Patchmaker" to change the volume level of individual patches.

Remember to save the original patch before you do this!

Have fun!

Patches For Advent Carols

Patch 0	Piano
Patch 6	Harpsichord
Patch 10	Music Box
Patch 11	Vibraphone
Patch 14	Tubular Bells
Patch 19	Church Organ
Patch 24	Nylon String Guitar
Patch 46	Harp
Patch 47	Timpani
Patch 48	Fast Strings
Patch 49	Slow Strings
Patch 56	Trumpet

Patch 57	Trombone
Patch 58	Tuba
Patch 59	French Horn
Patch 68	Oboe
Patch 69	English Horn
Patch 70	Bassoon
Patch 71	Clarinet
Patch 72	Piccolo
Patch 73	Flute
Patch 82	Synth Calliope or Pan Pipe

Standard Percussion Set

38	Snare Drum
55	Splash Cymbal
57	Crash Cymbal 2
67	High Agogo
76	High Woodblock
77	Low Woodblock
78	Mute Cuica
79	Open Cuica
81	Open Triangle
83	Jingle Bell
84	Belltone

How to Process Reg Pack Files

1. **Download** the **RegPack** archive files (**AC95REG1.EXE**, **AC95REG2.EXE**, etc.) and copy them into the **Advent95** directory (normally **C:\POWERJAM**). (If you have a CD-ROM version of **Advent95**, you might already have these files.)
2. Run **Advent95** (either the Windows 95 or Windows 3.1 version) and enter (or re-enter) your Registration Information. Once you enter the Registration Information correctly, the program will look for all **RegPack** files in the **Advent95** directory and automatically extract them.
3. Optional: move the **RegPack** archive files into a different directory (or delete them); this way, you won't re-process old **RegPack** files if new ones become available.
4. Optional: move the unarchived **RegPack** files (MIDI files and bitmaps) wherever you like. Enjoy!

PowerJam Systems

General Information

October 1995

Table of Contents

Technical Support

Troubleshooting

Bulletin Board

Updated Versions?

Order Form



™

**Rhodes Warrior, CanvasMan, Advent95, and the
sunglassed Beethoven picture are trademarks of Jeff Cazel**

Copyright © 1994-1995 Jeff Cazel All Rights Reserved

PowerJam Systems Technical Support

See also **Troubleshooting**

The best and fastest way to contact us is via a message on the CompuServe MIDI forum (“GO CIS:MIDIFORUM”).



We scan the MIDI forum’s Windows section at least daily unless we are on vacation. You can reach us there or through private electronic mail at address **72461,3345**.

You can also reach us on the Internet: **jeff@powerjam.com**

If you have problems with any **PowerJam Systems** program, please note the program’s version number. This information displays on the **Help-About** screen.

Getting Updated Versions of PowerJam Systems Programs

See also [PowerJam Systems BBS](#)

Overview

Registered users of any **PowerJam Systems** shareware program are always entitled to use the latest version of the program(s) they registered. Though you can always order an update via the order form, the fastest way to get a current version is to download it as described in this help topic.

If you have purchased a retail version of one of these programs, contact either the dealer or **PowerJam Systems** directly for upgrade information. The rest of this help topic does not apply to retail versions.

Internet

(Internet/FTP novices: see also [FTP Instructions](#))

Starting in April 1995, the latest version of **PowerJam Systems** shareware applications are available via anonymous ftp from the **PowerJam Systems** Internet ftp site: **hevanet.com** in the **/pub/powerjam/** directory (<ftp://hevanet.com/pub/powerjam>).

Check the “read me” file for current information—**readme.htm** for those with Web browsers; **readme.txt** otherwise. As of this writing, however, the archive filename for **CanvasMan** is CNVSMN.ZIP (<ftp://hevanet.com/pub/powerjam/cnvsmn.zip>); **Advent95** (32-bit version only) is ADVENT95.ZIP (<ftp://hevanet.com/pub/powerjam/advent95.zip>).

CompuServe



As mentioned in [Technical Support](#), the CompuServe Information Service is the official support forum for **PowerJam Systems** programs. New versions will arrive here first. All programs are in the MIDIFORUM (type **GO CIS:MIDIFORUM** at any ! prompt). The **Rhodes Warrior** and the **SongCanvas** are in library 7 (DOS) as RHODES.ZIP and SNGCVS.ZIP, respectively. **CanvasMan** and **Advent95** are in library 11 (Windows) as CNVSMN.ZIP and ADVENT95.ZIP, respectively.

Bulletin Boards

In addition to CompuServe and the Internet, many bulletin board systems (BBSs) also carry our programs. The file names will vary, but generally they will be the same as

those on CompuServe plus the version number. For example, version 4.9 of **CanvasMan** would be CNVSMN49.ZIP. Similarly, version 3.2 of the **SongCanvas** would be SNGCVS32.ZIP. Note that we have used PKZIP 2.0 to archive the programs. Also note that we have used PKZIP's authenticity verification feature; if you do not see **Authentic files Verified! #VHI634 Jeff Cazel** upon unarchiving, please ask your BBS operator to be sure to use the original ZIP files that have a better chance of being virus-free.

We upload to these BBSs ourselves, so they definitely carry current versions:

<u>Name</u>	<u>Location</u>	<u>Access #</u>
MIDI-IT!	Portland, OR	503-761-9600
Sound Management	Mundelein, IL	708-949-6434

*(MIDI-IT! is the official BBS for **PowerJam Systems** programs. File area #70 is the **PowerJam Systems** section.)*

Finally, most BBS software has a "keyword" search of some kind. You should be able to search for "CanvasMan", "SongCanvas", "Advent", "PowerJam", etc. and find if the programs are there. You can always find current versions on the **PowerJam Systems BBS**, too.

BBS SysOps—Please Note:

Phil Patrick, sysop at **MIDI-IT!**, supports "magic name" file requests. To request the then-current version of **CanvasMan** or the **SongCanvas**, use the magic filenames listed below.

CanvasMan sends the current **CanvasMan** program

SongCanvas sends the current **SongCanvas** program

File requests are available 22.5 hours each day and are not case-sensitive.

PowerJam Systems Bulletin Board

See also **Getting Updates to PowerJam Systems Programs**

*As of June 1995, the **PowerJam Systems** bulletin board is down and probably not going to reappear. Please consider **MIDI-IT!** as the official bulletin board for **PowerJam Systems** programs. Be sure to check here for possible new information each time you download an updated **PowerJam Systems** program. The **Files Available For Download** section (below) now refers to files currently available on **MIDI-IT!**. Since filenames might be different, you might want to do a keyword search on 'PowerJam' first.*

Files Available For Download

General

POWERJAM.EXE **PowerJam Systems** overview—Windows 3.1-based help database containing general **PowerJam Systems** information (how to get technical support and updated programs, etc.). All help files for our Windows-based programs incorporate this file.

PowerJam Systems Programs

ADVENT95.ZIP **Advent95**—Windows 95-based General MIDI Advent Calendar for Christmas 1995. **Shareware**. The BBS also has some supplementary files available only to registered users of **Advent95**. (The Windows 3.1 version of **Advent95** is in the file WINADV95.ZIP.)

CNVSMN.ZIP **CanvasMan**—Windows 3.1-based editor/librarian for the Sound Canvas line of GS synthesizers (supports over a dozen synths). **Shareware**.

RHODES.ZIP **Rhodes Warrior**—DOS-based editor/librarian for the Roland Rhodes MK-80 digital piano. **Freeware**.

SNGCVS.ZIP **SongCanvas**—DOS-based editor/librarian for the Sound Canvas line of GS synthesizers (supports several older Sound Canvas synths). **Freeware**.

WINADV95.ZIP **Advent95**—Windows 3.1-based General MIDI Advent Calendar for Christmas 1995. **Shareware**. The BBS also has some supplementary files available only to registered users of **Advent95**. (The Windows 95 version of **Advent95** is in the file ADVENT95.ZIP.)

Supplemental Files

- AC95REG1.EXE** **Advent Registration Pack #1**—supplemental songs for **Advent95**. This file is for registered users only—it is password-protected.
- AC95REG2.EXE** **Advent Registration Pack #2**—supplemental pictures for **Advent95**. This file is for registered users only—it is password-protected.
- CANQUEST.ZIP** **CanQuest—CanvasMan** glossary and Sound Canvas tutorial file in Windows 3.1 help database format.
- CMCNVRT.ZIP** Converts **CanvasMan** Combos and Sounds from CM1-format to CM2-format. You will want this file if you upgrade your ‘old-style’ synth (e.g., SCC-1, SC-55) to a ‘new-style’ synth (e.g., SC-50, SC-55mkII).

Beta Test—read the **Beta Testing Note** before downloading any beta files

- CMBETA.ZIP** Beta test version of **CanvasMan**

Sorry, but we can no longer accept checks drawn on banks outside of the USA. If you do not have a bank account in the United States, please send us an e-mail message (to jeff@powerjam.com) for information on current payment options. We're working on getting Visa and MasterCard capability.

Ludwig van Beethoven, 1770-1827, was one of the world's greatest composers. This picture of him wearing sunglasses is a trademark of Jeff Cazal. Our other trademarks include **Rhodes Warrior**, **CanvasMan** and **Advent95**.

This picture is the official logo of the MIDI forum on the CompuServe Information Service. The MIDI forum's Windows section is the primary technical support channel for **PowerJam Systems** software. CompuServe is also the first site to receive new releases of **PowerJam** shareware applications.

If you're not yet on CompuServe, you're missing out on a powerful computing tool. Contact them at 800-848-8990 (614-457-8650 outside the USA) for more information.

Beta Testing Note: we do not show beta test files within the bulletin board's list of files. We 'hide' them because we designed the beta versions to function only for registered users of the shareware version of that program. So, for example, if you did not register the shareware version of **CanvasMan**, do not download CMBETA.ZIP—it will NOT work. For the same reason, please do not re-upload beta files to any other bulletin boards.

We will send out a broadcast on CompuServe when beta test files are available. If we are not currently beta testing a given program, its listed beta file will not be available for download. If you try to download a file that is not available, don't worry; your download attempt will simply fail harmlessly.)

PowerJam Systems is the State of Oregon business name for our music/MIDI programming, performing and consulting enterprise. On the MIDI software end, our programs include **CanvasMan**, **Advent95**, the **SongCanvas** and the **Rhodes Warrior**.

If you need to contact us, the best way is via Internet e-mail: jeff@powerjam.com

If you wish to place an order, please make checks payable to “Jeff Cazel” rather than to “PowerJam Systems”. See the [order form](#) for complete details.

How to FTP PowerJam Systems Files From the Internet

The latest version of current **PowerJam Systems** shareware programs are always available via anonymous ftp from hevanet.com in the /pub/powerjam/ directory (the **PowerJam Systems** ftp site). If you are unfamiliar with how to use ftp, here are a few simple instructions:

1. Using your favorite ftp program, make a connection to **hevanet.com**. Under UNIX, you do this by typing “ftp hevanet.com” at the command prompt. (NOTE: Unix is case-sensitive (“Jeff” is not equivalent to “jeff”), so pay special attention to the way you type in these commands and these directory and file names. Also, do not type the quotes shown in any of these commands but remember to press the <Enter> key afterwards.)
2. Log in as “anonymous” and when prompted for a password, type in your complete Internet address. For example, we would type “jeff@powerjam.com” for our password.
3. Go to the directory by typing “cd /pub/powerjam/”. Keep in mind that “dir” and “ls” will give you a directory listing of the current directory. Also, as in DOS, most (but not all) flavors of Unix support wildcards. For example, you can generally type “dir c*.zip” to find all ZIP archive files that begin with ‘c’.
4. To retrieve the file, first type “binary” at the command prompt to ensure that the file transfers properly (ftp normally defaults to ASCII). You might also want to type in “hash” so you get a visual representation of the file transfer. We recommend that you always use “hash” as it is not uncommon for very busy FTP sites to hang indefinitely during the transfer.
5. Type in “get <filename>” to transfer the file to your computer. For example, type “get POWERJAM.EXE” to retrieve the **PowerJam Systems** overview file.
6. To end an ftp session, type in “bye” at the command prompt.

Ordering Instructions

[Print Order Form](#)

[View Order Form](#)

You can register all **PowerJam Systems** shareware programs with the attached order form. Read these instructions and then click on the [Print Order Form](#) above.

Registered shareware users can access the enhanced features of and download free updates to the program(s). And finally, your “please register” screen will go away.

You must register to legally continue using a shareware program. However, as shown on the order form, buying the disk and manual are optional.

CompuServe users can register **CanvasMan** and/or **Advent95** online. The charge for the program will show up on your next CompuServe billing statement. Type **GO CIS:SWREG <Enter>** and follow the instructions. **CanvasMan** is program #**660**; **Advent95** is #**4329**.

Important Electronic Mail Note: if you don't register via CompuServe SWREG but you do have an Internet e-mail address (e.g., via CompuServe, Prodigy, America Online, or the ‘real’ Internet, etc.), please include it on the order form. This will allow me to electronically send your Registration Information, getting you up and running as quickly as possible with the enhanced version.

Print this form, fill it in and send your check (**drawn on a US bank and payable in US dollars**) to:

Jeff Cazel
13265 SW Cottontail
Beaverton, OR 97008-8077 USA

September 1995

Your Name: _____
Address: _____

City/State/ZIP: _____
Country: _____
Internet Address: _____

<u>Quantity</u>	Shareware Registration (does not include optional User's Guide nor Disk)	Each	Total
_____	CanvasMan (Windows 3.1 GS Editor/Librarian)	\$59	_____
_____	Advent95 (1995 GM Advent Calendar (includes both Win31 & Win95 versions))	<i>see below</i>	_____
	<u>User's Guide</u> (optional)		
_____	CanvasMan	\$5	_____
	<u>Current Disk</u> (optional (3½" disk size only))		
_____	CanvasMan	\$5	_____
_____	Advent95 (for Windows 95)	\$5	_____
_____	Advent95 (for Windows 3.1)	\$5	_____
_____	Advent95 (for Windows 95) plus RegPack files	\$10	_____
_____	Advent95 (for Windows 3.1) plus RegPack files	\$10	_____
	<i>Foreign orders please add \$10 for shipping if ordering a disk or manual:</i>	\$10	_____

Grand Total Enclosed

Send your your check (drawn on a US bank and payable in US dollars). Thank you!

(**Advent95** registration is \$20 before November 1, 1995, but might increase after that. After that date, please download the then-current version for accurate information.)

Troubleshooting

See also [Technical Support](#)

PowerJam Systems programs crash and don't get along with my SoundBlaster

(There is a bug in the SoundBlaster MIDI driver. **CanvasMan** \geq v4.96 and **Advent95** \geq v1.2 get around this problem via a change to the Music Quest ToolKit code. If you still have crashes with a SoundBlaster driver, please let us know; otherwise, we will shortly delete the following *Solution* from online help as it is no longer needed. Thanks!)

Analysis/Diagnosis: There is a conflict between the SoundBlaster Pro's MIDI driver and JJCMIO16.DLL. This appears to be a bug (is a bug—May 1995) in the SoundBlaster Pro's driver. Since all **PowerJam Systems** programs for Windows 3.1 use JJCMIO16.DLL, this problem afflicts **CanvasMan**, **Advent94**, and **Advent95**.

Solution: Thanks to Kevin Andresen for providing this information in November 1994 on the Internet's *Sound Canvas Users Group*, paraphrased below:

“The SB Pro can be considered as several distinct devices/interfaces: FM synth, MIDI interface, CD-ROM interface, joystick interface, etc.

Two of these, under Windows, use MIDI drivers (my names are for the original SoundBlaster Pro. The current SB Pro 2 might be different):

<i>Name</i>	<i>As Listed in Control Panel/Drivers</i>	<i>MIDI Out Choice</i>
SBPFM.DRV	Creative Sound Blaster Pro MIDI Synth	SB Pro Stereo FM
SBPSND.DRV	Creative Sound Blaster Pro Wave/MIDI	SB MIDI Out

The *MIDI Out Choices* appear as port names in **CanvasMan** / **Advent94** / **Advent95**'s dialog boxes and menus.

SBPFM.DRV accepts MIDI data and creates sound using its internal FM synthesizer.

SBPSND.DRV drives the wave file player and MIDI ports (and maybe more).

If all SB Pro drivers are installed in Windows, then SBPFM and SBPSND will show up as MIDI drivers in the [drivers] section in SYSTEM.INI (you can edit SYSTEM.INI by selecting File-Run SYSEDIT from Program Manager). **PowerJam Systems** programs will crash if SYSTEM.INI looks like this:

```
[drivers]
MIDI=sbpfm.drv
MIDI1=sbpsnd.drv
MIDI2=another_midi_driver      (MIDI2 might not appear)
MIDI3=yet_another_midi_driver (MIDI3 might not appear)
```

You must get the SB Pro Stereo FM driver (SBPFM.DRV) out of the first MIDI

position; for example, you can change it to this:

```
[drivers]
MIDI=sbpsnd.drv
MIDI1=sbpfm.drv
MIDI2=another_midi_driver      (MIDI2 might not appear)
MIDI3=yet_another_midi_driver  (MIDI3 might not appear)
```

After making the change to SYSTEM.INI, save the file and then exit and restart Windows.”

All **PowerJam Systems** programs should now work properly.

