

# ClipFiler

The Windows Clipboard Text Database Tool  
Version 1.02  
Copyright 1994, 1995 by Henry (Herb) Cumbie

## Table of Contents

### General Description

### Controls

### Dialogs

### Technical Stuff

### Copyright and Registration Information

### Acknowledgments

## General Description

ClipFiler is a Windows Clipboard database tool.

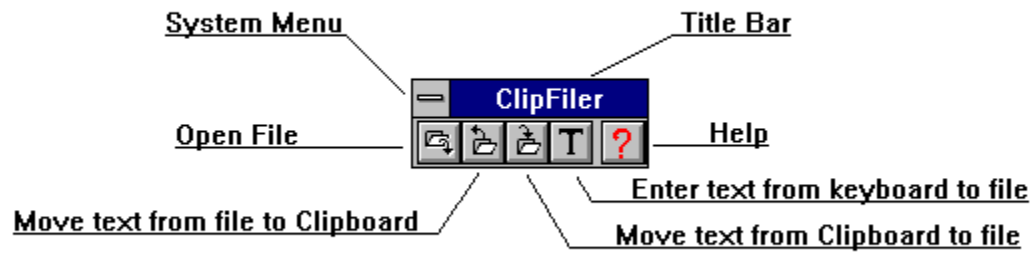
Windows allows you to copy or cut text from documents to an area known as the Clipboard. The text can then be copied into another document location, either in the same document or in a different document.

The main problem with the Clipboard is that Windows does not provide a convenient way to save Clipboard text for later use. Windows 3.1/3.11 does provide the Clipboard Viewer and Windows for Workgroups provides the Clipbook Viewer. I found these tools to be inconvenient to use, although they do allow you to save Clipboard information to a disk file and to retrieve it later.

ClipFiler provides a convenient, easy to use way to manage Clipboard text clips. ClipFiler lets you create and use ClipFiler Database Files (.CDF extension). CDF files are used to store Clipboard text clips. You can save text into a CDF and later copy it back to the Clipboard.

The ClipFiler interface is a simple five button toolbar. It can be set to remain on top of all other windows, thereby making it available at any time. It can be moved to any location on the screen, so it won't interfere with the controls of other programs.

# ClipFiler Controls



## **System Menu Button**

Displays menu options to Move, Close, change the Always On Top status, and display the About ClipFiler Dialog. Menu options include options related to registering the program while the program is unregistered.

**Title Bar**

Displays either the name of the program or the name of the current data file. Can be used to move the ClipFiler tool around the screen.

## **Open File Button**

Activates the Open File Dialog, which allows you to open or create a ClipFiler Data File (.CDF).

## **Move Text to Clipboard Button**

Activates the Read Clipboard Item from File Dialog.

## **Move Clipboard Text to File Button**

Activates the Store Clipboard Text into File Dialog.



## **Enter Text to File Button**

Activates the Enter Text into File Dialog.

## **Help Button**

Activates this Help file. But YOU knew that already, RIGHT???

## System Menu Button Control

Activates the System Menu. Prior to Product Registration the System Menu looks like the following illustration:

<b>Move</b>	
<b>C</b> lose	<b>Alt+F4</b>
<b>S</b> witch To...	<b>Ctrl+Esc</b>
√ <b>Always on top</b>	
<b>Enter Product Registration</b> <b>Print Registration Form</b>	
<b>About ClipFiler</b>	

After Product Registration the System Menu looks like the following illustration:

<b>Move</b>	
<b>C</b> lose	<b>Alt+F4</b>
<b>S</b> witch To...	<b>Ctrl+Esc</b>
√ <b>Always on top</b>	
<b>About ClipFiler</b>	

## System Menu Options

### Move

Allows you to move the toolbar by dragging the Title Bar to a new location.

### Close

Allows you to exit the application. Closes the current ClipFiler Data File. Save the name of the data file and the current location for use in the next session.

### Switch To...

Activates the standard Switch To Application Dialog, allowing you to switch the focus to any running application.

### Always on top

Toggles the Always on top status from Off to On or from On to Off. When Always is on top is on, the toolbar will appear on top of all other application windows.

### Enter Product Registration

Activates the Enter Registration Info Dialog, allowing you to enter the product serial number and registration key.

This Option is not displayed once you have registered your copy of the product.

**Print Registration Form**

Activates the Print Registration Order Form Dialog which allows you to enter your address and print the registration order form.

This Option is not displayed once you have registered your copy of the product.

**About ClipFiler**

Activates the About ClipFiler Dialog.

## **Title Bar**

The Title Bar has two purposes:

- Displays the name of the current data file.
- Allows you to move the toolbar around the screen.

The name of the current data file is automatically displayed in the title bar. Note that only the root of the name is shown. The .CDF extension is NOT displayed in the Title Bar.

Note that ClipFiler remembers the name of the data file used in the last session and automatically opens it when you start a new session.

To move the toolbar:

- Move the mouse cursor to the Title Bar.
- Hold down the left mouse button.
- Move the mouse until the toolbar is in the desired location.
- Release the left mouse button.

Note that ClipFiler remembers where you had it located during the last session and resumes that position when you start a new session.

## **Open File Button Control**

The Open File button activates the Open File Dialog. This dialog allows you to

- Open an existing data file.
- Open a new data file.

ClipFiler stores Clipboard text in ClipFiler Data Files which have the filename extension of .CDF. CDF files may be located in any directory. Each CDF has a corresponding index file which has the same file name with a .NDX extension.

## **Move Text to Clipboard Button Control**

Activates the Read Clipboard Item from File Dialog.

Text clips which have been stored in a ClipFiler Data File may be copied back to the Clipboard at a later time. This allows you to select from the subjects in the data file and then paste them into other documents.

## **Move Clipboard Text to File Button Control**

Activates the Store Clipboard Text into File Dialog.

Storing Clipboard text in a ClipFiler Data File allows you to recall it in the future for use in other documents.



## **Enter Text to File Button Control**

Activates the Enter Text into File Dialog.

Sometimes you may desire to enter text directly into the ClipFiler Data File, rather than using the Clipboard. Perhaps you have a quotation from a source which is not currently in a file on your system. This control allows you to type in the text you wish to enter into the data file.

## **Help Button Control**

Activates the Windows Help System to display this Help file.

## **Dialogs**

ClipFiler dialogs can be divided into four categories:

### **Dialogs need to use ClipFiler**

Open File Dialog

Read ClipBoard Item from File Dialog

Store Clipboard Text into File Dialog

Enter Text into File Dialog

### **Dialogs related to Product Registration**

User Name Input Dialog

Print Registration Order Form Dialog

Enter Registration Info Dialog

### **Dialogs which display ClipFiler Error Messages**

No User Name Error

Already Started Error

Must Open Data File Error

No Subjects in Index Error

No Text in Clipboard Error

Missing Registration Data Error

Registration Data Errors

### **Miscellaneous Information Dialogs**

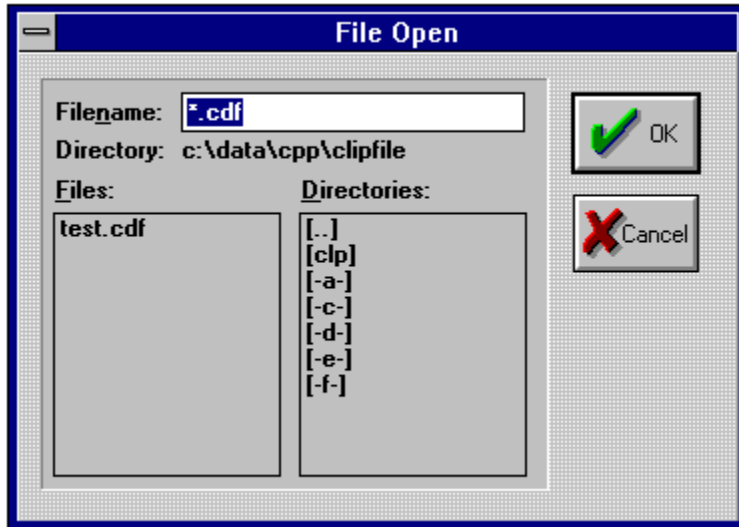
About ClipFiler Dialog

Thank You Dialog



## Open File Dialog

The dialog appears as shown in the following illustration:



This dialog is a standard Windows Open File Dialog which allows you to:

- Open an existing ClipFiler Data File (CDF).
- Create a new ClipFiler Data File (CDF).

### Procedure

#### Opening an existing file

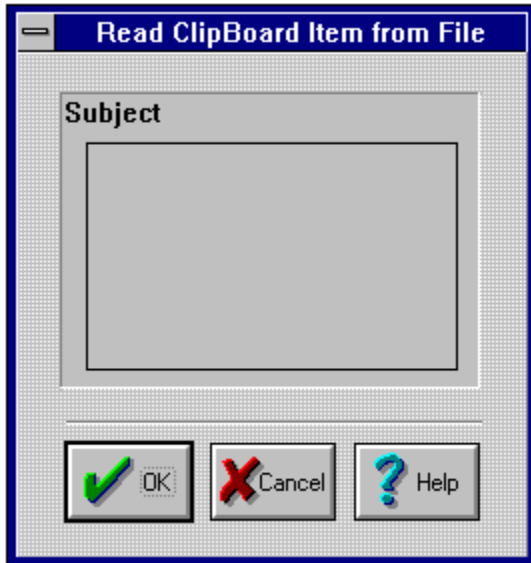
Use the Directories control to select the drive and directory which contains the ClipFiler Data File which you wish to open. Select the CDF from the Files control, then click on the OK button to open the data file.

#### Creating a new file

Use the Directories control to select the drive and directory where you wish to create the ClipFiler Data File. Enter the filename for the new CDF in the Filename text edit control. Click on the OK button to create the new data file.

## Read Clipboard Item from File Dialog

The dialog appears as shown in the following illustration:



This dialog allows you to select a text subject in the current ClipFiler Data File to be copied to the Clipboard.

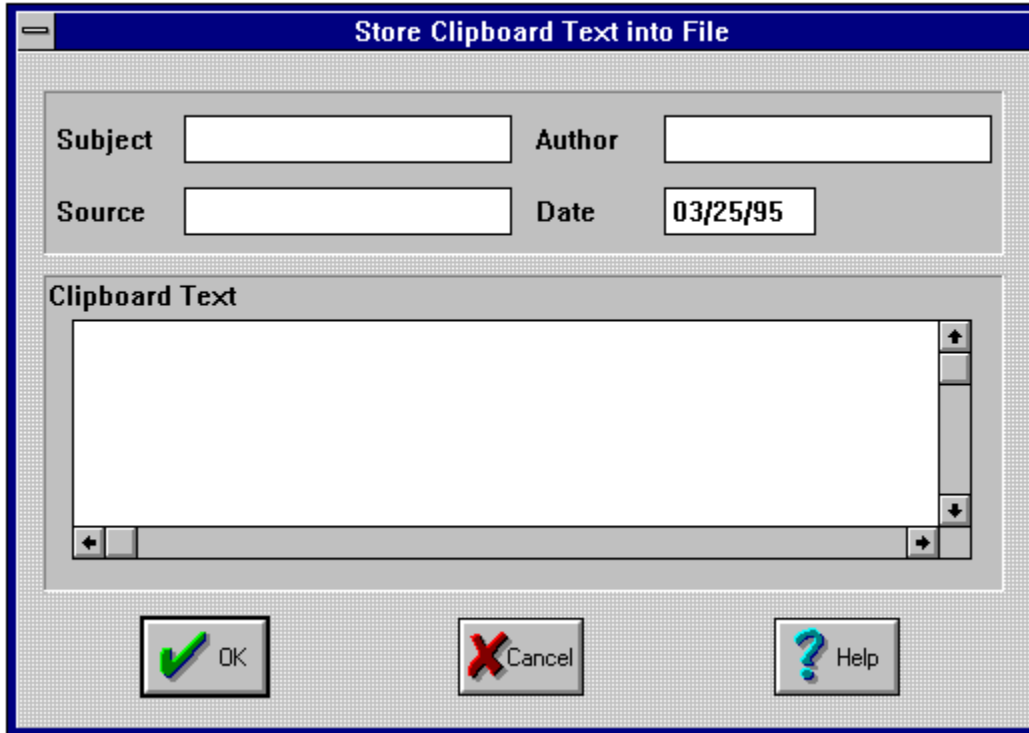
The text items stored in the current CDF are identified by Subject names, which are listed in the Subject listbox control.

### Procedure

To copy a text item from the data file to the Clipboard, select the desired subject name in the Subject listbox control. Then click on the OK button to copy the text to the Clipboard. You can also select a subject by just Double-Clicking on the subject name.

## Store Clipboard Text into File Dialog

The dialog appears as shown in the following illustration:



This dialog allows you to:

- Enter identifying information for a new text item:
  - Subject
  - Source
  - Author
  - Date
- Review and edit the text from the Clipboard before it is saved to data file.

### Procedure

**Subject** - The Subject text edit control contains the first twenty-four characters of the text being stored. You may accept this as the Subject identifier or you may edit it to a more informative label. You **must** provide a Subject label if you want to save the text to the data file.

**Source** - The Source text edit control may be used to enter twenty-four characters of source identification information. This information is saved to the data file. The current version of ClipFiler does not allow you to access this information later, but future utilities will allow you to use this information.

**Author** - The Author text edit control may be used to enter twenty-four characters of author

identification information. This information is saved to the data file. The current version of ClipFiler does not allow you to access this information later, but future utilities will allow you to use this information.

**Date** - The Date text edit control contains the current date as reported by your system. You may modify this information before saving the text This information is saved to the data file. The current version of ClipFiler does not allow you to access this information later, but future utilities will allow you to use this information.

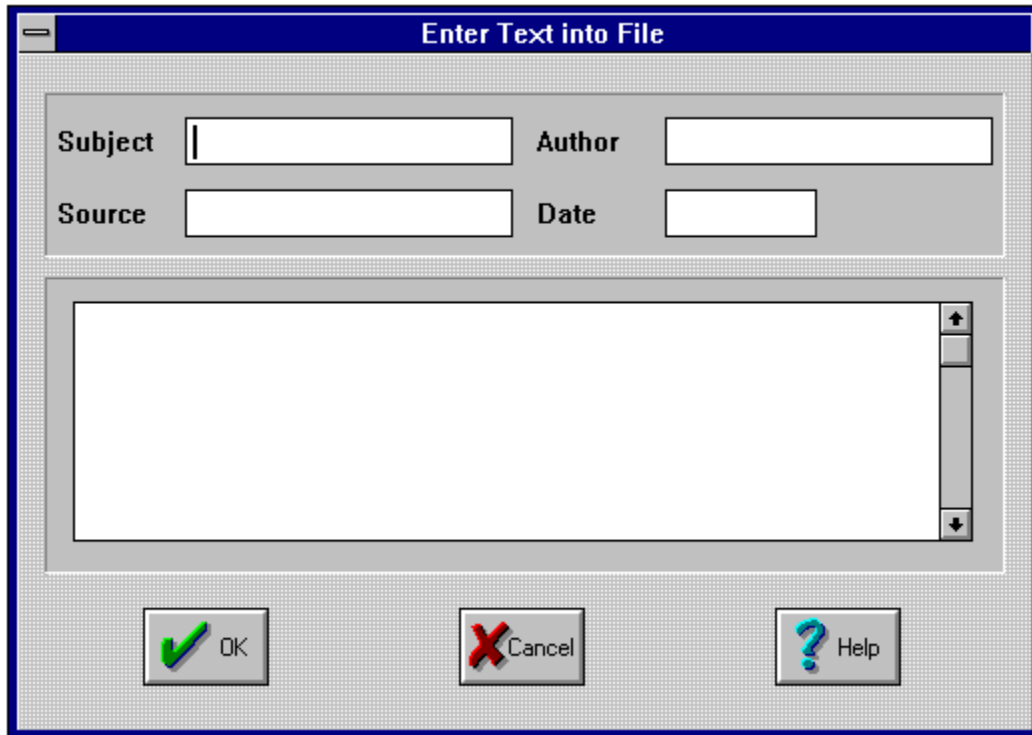
**Reviewing and editing the Clipboard text** - The larger text edit control contains the text which is being copied to from the Clipboard to the data file. You may view and edit this text in the edit control before saving the text to the data file.

Click the OK button to save the text to the current data file.



## Enter Text into File Dialog

The dialog appears as shown in the following illustration:



This dialog allows you to:

- Enter identifying information for a new text item:
  - Subject
  - Source
  - Author
  - Date
- Enter text from the keyboard instead of using the Clipboard.

Sometimes you may want to enter text into a CDF which is not already in a file on your system. Perhaps you are reading a book or magazine and notice a particular passage you want to be able to quote in your own work. This dialog allows you to enter the text directly into the CDF without starting another program to type the text.

### Procedure

**Subject** - The Subject text edit control contains the first twenty-four characters of the text being stored. You may accept this as the Subject identifier or you may edit it to a more informative label. You **must** provide a Subject label if you want to save the text to the data file.

**Source** - The Source text edit control may be used to enter twenty-four characters of source identification information. This information is saved to the data file. The current version of

ClipFiler does not allow you to access this information later, but future utilities will allow you to use this information.

**Author** - The Author text edit control may be used to enter twenty-four characters of author identification information. This information is saved to the data file. The current version of ClipFiler does not allow you to access this information later, but future utilities will allow you to use this information.

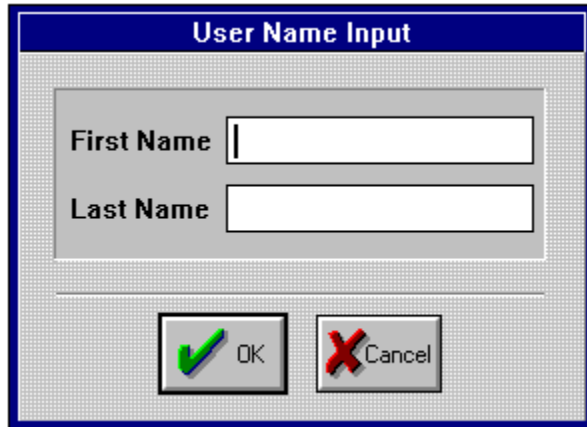
**Date** - The Date text edit control contains the current date as reported by your system. You may modify this information before saving the text. This information is saved to the data file. The current version of ClipFiler does not allow you to access this information later, but future utilities will allow you to use this information.

**Entering and editing the text** - The larger text edit control is used to enter the text which is being stored into the data file.

Click the OK button to save the text to the current data file.

## User Name Input Dialog

The dialog appears as shown in the following illustration:



The illustration shows a dialog box titled "User Name Input" with a blue header bar. Inside the dialog, there are two text input fields. The first field is labeled "First Name" and the second is labeled "Last Name". Below the input fields, there are two buttons: "OK" with a green checkmark icon and "Cancel" with a red X icon.

This dialog allows you to enter the first and last name of the user.

You must enter your name in this dialog. ClipFiler can not be used until this step is completed.

Each text edit field will accept only one name. Numbers are not allowed in a name field.

## Print Registration Order Form Dialog

The dialog appears as shown in the following illustration:

The dialog box is titled "Print Registration Order Form". It contains the following fields and controls:

- Product Name:** ClipFiler, Version 1.00
- User Name:** Henry Cumbie
- Enter Address Information:**
  - Address Line 1
  - Address Line 2
  - City
  - State or Province
  - Country
  - Postal Code
  - EMail Address
- OK** button (with a green checkmark icon)
- Cancel** button (with a red X icon)

This dialog allows you to print the registration order form.

### Procedure

The dialog displays the Product Name and your User Name in the first two edit fields. This information can not be changed by the user.

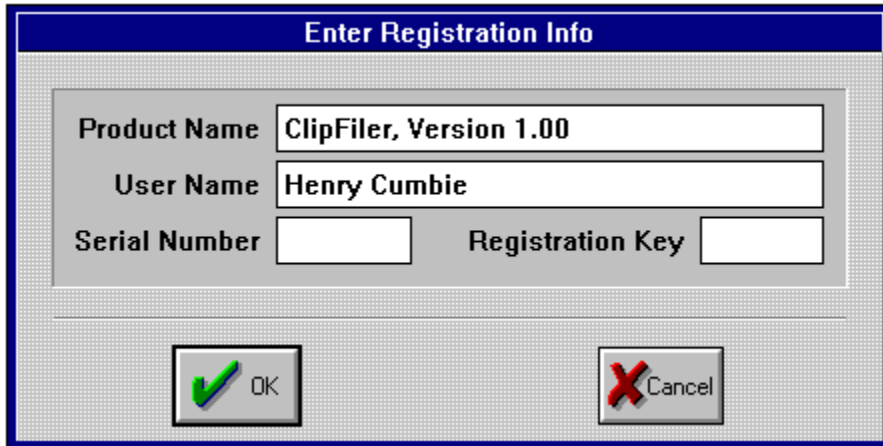
Enter the required information in the following text edit fields:

- Address Line 1
- Address Line 2 (optional)
- City
- State or Province
- Country
- Postal Code
- EMail Address (optional)

Then click the OK button. You will then get a standard Windows printer dialog to confirm the printer information. Click the OK button on this dialog and your order form will be printed.

## Enter Registration Info Dialog

The dialog appears as shown in the following illustration:



The dialog box is titled "Enter Registration Info". It contains the following fields and controls:

- Product Name:** ClipFiler, Version 1.00
- User Name:** Henry Cumbie
- Serial Number:** (empty field)
- Registration Key:** (empty field)
- Buttons:** OK (with a green checkmark icon) and Cancel (with a red X icon).

This dialog allows you to enter your registration information.

### Procedure

The dialog displays the Product Name and your User Name in the first two edit fields. This information can not be changed by the user.

Refer to your Registration Letter . It will contain the information needed to fill in the following text edit fields:

Serial Number - This will be a six digit number.

Registration Key - This will be a six character group of letters and numbers.

Type in the Serial Number and Registration Key EXACTLY as they appear in your Registration Letter.

Click on the OK button to complete this operation.

## No User Name Error Dialog

The dialog appears as shown in the following illustration:



### Explanation

You have tried to start ClipFiler without entering both your first name and last name in the User Name Input Dialog. ClipFiler can not be used until you have provided this information.

## Already Started Error Dialog

The dialog appears as shown in the following illustration:



### Explanation

You have tried to start a second instance of ClipFiler. You may have only ONE instance of ClipFiler running at a time.

## Must Open Data File Error Dialog

The dialog appears as shown in the following illustration:



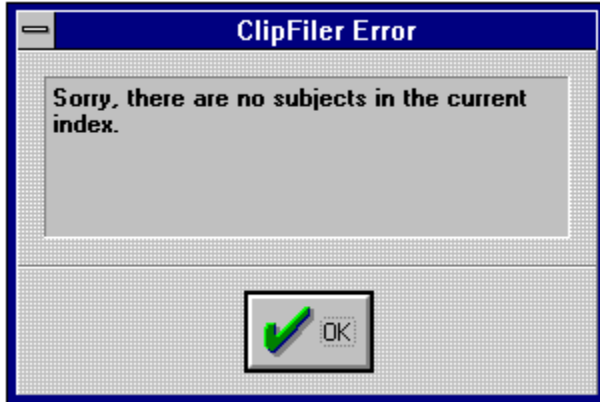
### Explanation

You have tried to load or save data when you have not opened a data file. Use the File Open Button & Dialog to open a data file.



## No Subjects in Index Error Dialog

The dialog appears as shown in the following illustration:

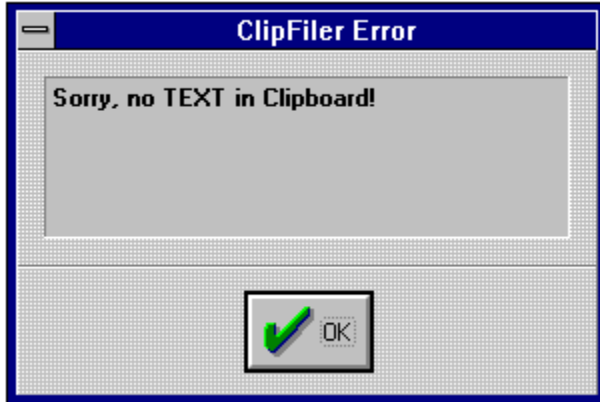


### Explanation

You have tried to activate the Move Clipboard Text to File Button Control. The current data file is empty. You must open a data file which contains text subjects before you can copy text to the Clipboard.

## No Text in Clipboard Error

The dialog appears as shown in the following illustration:

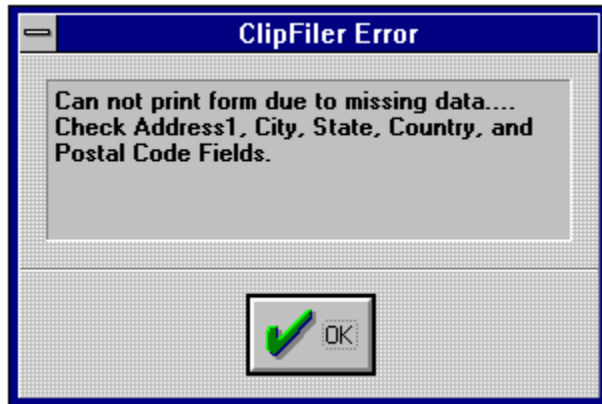


### Explanation

You have tried to activate the Move Text to File Button control when there is no text in the Clipboard.

## Missing Registration Data Error Dialog

The dialog appears as shown in the following illustration:

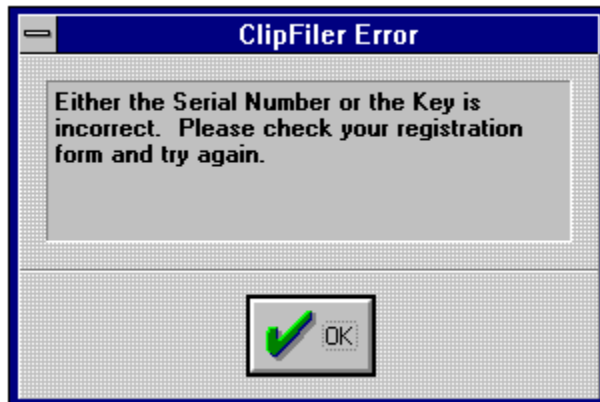
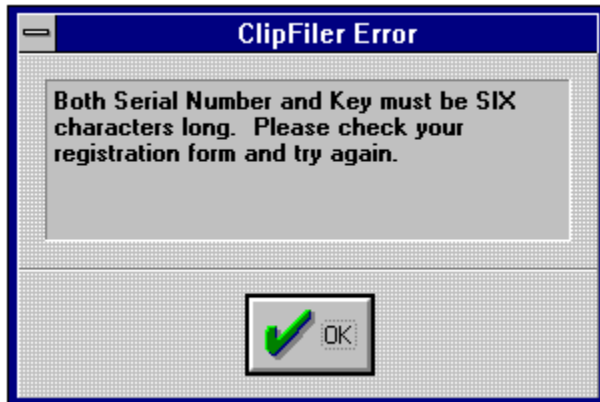


### Explanation

One or more items of information have not been completed in the Print Registration Order Form Dialog. You must complete all items except Address Line 2 and EMail Address.

## Registration Data Errors

The dialogs appear as shown in the following illustrations:



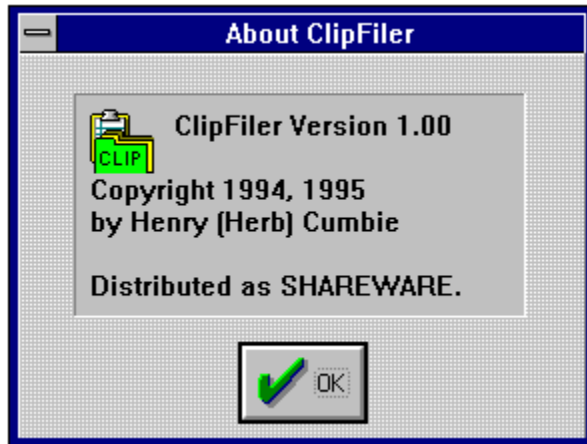
## Explanation

The first dialog means that one or both of the items entered in the Registration Info Dialog did not contain SIX characters.

The second dialog means that the serial number and registration key do not validate properly. Check your Registration Letter and reenter the correct information. If you continue to have problems, please contact the author for resolution.

## About ClipFiler Dialog

The dialog appears as shown in the following illustration:

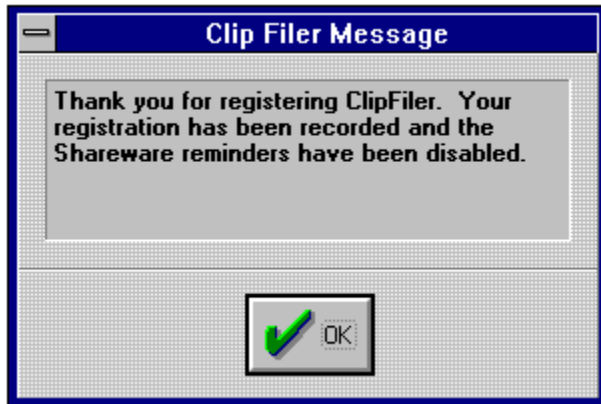


### Explanation

This is a standard Windows About Dialog which identifies the name and version of the product, declares the copyright status, and identifies the author.

## Thank You Dialog

The dialog appears as shown in the following illustration:



### Explanation

None required. You will see this dialog once, when you have entered your registration information.

## Technical Stuff

### Windows Version Compatability

This version of ClipFiler has been tested on the follow versions of Windows:

Windows 3.1  
Windows 3.11  
Windows for Workgroups 3.11  
Windows 95 Preview Program Beta (Build 347)  
Windows NT Workstation 3.5

### Distribution Files

The distribution package for this version of Clip Filer consists of either one floppy disk (3 1/2 or 5 1/4 HD) or the compressed file CLPFL09B.ZIP. These contain the following files:

CLIPFILE.EXE Application executable  
CLIPFILE.HLP Application Help file .  
INSTALL.EXE Standard install executeable.  
INSTALL.INF Install information file.  
BWCC.DLL Borland Custom Controls DLL  
README.TXT Read Me file containing basic  
information and installation instructions.

### Files created by Clip Filer

Clip Filer creates and/or uses the following files or types of files:

CLIPFILE.INI Application initialization file. Created in the WINDOWS directory. Contains last position of Clip Filer, name of last data file used and Always on top status. When Clip Filer is started, this information is read and the application resumes the last position and opens the file that was last used.

FILENAME.CDF Application database file. The file is an object oriented database, adapted from the format detailed in the book ObjectWindows How-To by Gary Syck.

FILENAME.NDX Application database index file. The file is an index to the records in the related CDF file.

### Files created or modified by ClipFiler

EVILLAGE.INI - Product registration information for EVillage software is

stored in this file. **DO NOT EDIT THIS FILE MANUALLY OR IT MAY INVALIDATE YOUR PRODUCT REGISTRATION.**

## **Changes**

### **Version 1.00**

Initial Shareware distribution package

### **Version 1.01**

- (1) Corrected mailing address in Help File.
- (2) Fixed minor problem with Install setup which resulted in invalid icon application.
- (3) Increased width of Registration Key text edit field in Enter Registration dialog. The original dialog would accept only five characters in some situations.
- (4) Added Version information to EVILLAGE.INI.

### **Version 1.02**

- (1) Corrected version information in Help File!
- (2) Fixed problem which caused check mark for Always On Top to appear in the wrong location on Windows 95 systems.
- (3) Fixed list box in Read Clipboard Item from File Dialog so it would accept double-click as select and OK.
- (4) Fixed the File Open dialog so it shows you the directory of the last opened data file, rather than ClipFilers working directory.
- (5) Added ability to specify a data file as a command line parameter. This means that you can also associate the CDF file extension with ClipFiler and then open a file by double clicking on the data file in either File Manager or Windows Explorer (Windows 95).



## **Copyright and Registration Information**

### **Copyright Notice**

This Application, consisting of the files listed in the Clip Filer Files (Distribution) section are copyrighted effective 1994 and 1995 by the author, Henry H. Cumbie, Jr. Some of the files listed are copyrighted by other authors and/or companies and have been properly licensed by the author from the holders of said copyrights. The author reserves all rights to this property.

### **Clip Filer Registration**

#### **Version Information**

This is the Shareware version of Clip Filer. Formally, this version is known as CLIP FILER VER 1.02

#### **Distribution status**

This version of Clip Filer is being distributed as Shareware by the author. You may possess, use, copy, and distribute this version freely, under the following conditions.

You may not sell this product. Activities such as bulletin boards, on-line services, shareware distributors, and Internet FTP sites may distribute this product without further permission from the author. Such activities may charge nominal monetary fees for the distribution of this product, as is their normal and accepted practice. The product must be distributed intact, as described in the Clip Filer Files (Distribution) section of this Help file.

### **Registration**

Registration of this version of Clip Filer is required. The registration fee is \$10.00 (US). To register this application, print a copy of the registration order form and mail it with a check or money order for your registration fee to:

Henry Cumbie  
2509 Rollins Ave  
Panama City, FL 32405

### **Communicating with the author**

The author (Henry , call me Herb, Cumbie) may also be reached by Internet E-Mail. The address is:

EVillage@delphi.com

**Bug Reports and Suggestions**

Send any bug reports, comments, and suggestions to the author at the E-Mail address shown above. Your constructive support will help me make the next version a better product.

Thank You

Herb Cumbie

## Acknowledgments and Thanks

### Compiler

Thanks to **Borland** for **Turbo C++ for Windows, Version 3.1**.

### Install Program

Thanks to **Kurt P. Herzog** for his great shareware program **Install/Easy**.

### Authors, Books, and Publishers

**Gary Syck**: *ObjectWindows How-To*, Waite Group Press. Thanks for the no-nonsense examples showing how to do things in the OWL environment.

**Paul Perry**: *Turbo C++ for Windows*, SAMS Publishing. Thanks for the information about how to use the Clipboard.

**Tom Swan**: *Mastering Borland C++*, SAMS Publishing. Thanks for all the great details about working with classes in C++.

### People I really know.....

**Lonnie Danzler**, Adjunct Instructor at **Gulf Coast Community College**. Thanks and thanks again. First you taught me to C, then you taught me to C more (++)!!!!

**Eric Burkes**, Project Manager, CSS Lan Support, **CENCOR**. A great boss who encouraged me to pursue my interests in programming and computers.

**Carol Cumbie, the best wife a guy could have**. You have let me play with these things for years and still don't complain when I burn the midnight oil programming, although I haven't produce much money from the efforts. Maybe this will start to change soon.....

