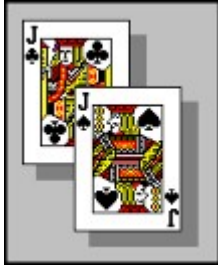


## Professional Euchre Help Contents



**Professional Euchre** is a game of strategy and luck. The game is played with four people, where the two people sitting across from each other form teams. You play with a computer controlled partner against a team of two computer controlled players. Although most things can be done with the mouse or the keyboard, you must have a mouse to play **Professional Euchre**.

Help on...

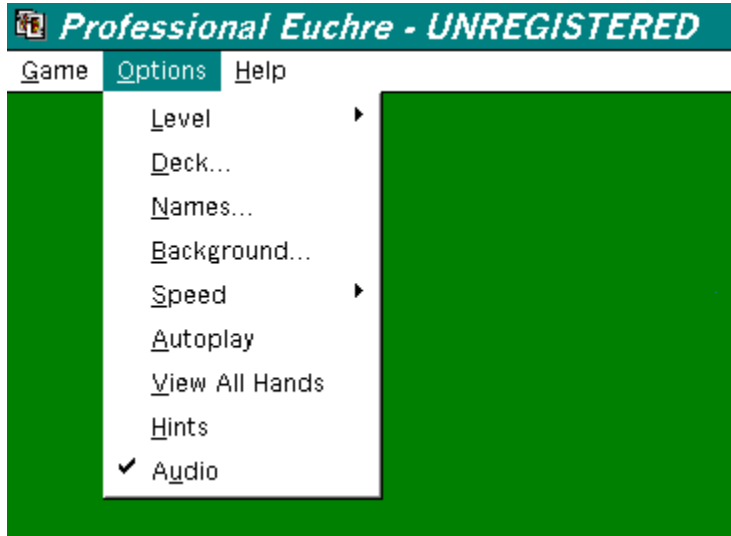
[Changing Options](#)  
[Keeping Score](#)  
[Playing the Game](#)  
[Understanding the Rules](#)  
[Using Strategy](#)

Other Topics...

[What is Shareware?](#)  
[Disclaimer - Agreement](#)  
[Register Professional Euchre](#)

## Changing Options

As you can see from the image below, there are quite a few options which allow you to customize **Professional Euchre**. Simply click on the option you are interested in.



# Keeping Score

**The first team to reach a score of 10 wins!**

At the end of each hand (each player has played all 5 cards), the following points are given :

If your team called or picked up:

**2 points** if your team takes all 5 tricks

**1 point** if your team takes more than 3 but less than 5 tricks

**0 points** if your team takes less than 3 tricks ( your team was "euchred")

If the other team called or picked up:

**2 points** if your team takes 5 tricks ( you "euchred" the other team)

**1 point** if your team takes more than 3 but less than 5 tricks

**0 points** if your team takes less than 3 tricks

If someone on your team went alone:

**4 points** if your team takes all 5 tricks

**1 point** if your team takes more than 3 but less than 5 tricks

**0 points** if your team takes less than 3 tricks (your team was "euchred")

If someone on the other team went alone:

**4 points** if your team takes 5 tricks ( you "euchred" the other team)

**1 point** if your team takes more than 3 but less than 5 tricks

**0 points** if your team takes less than 3 tricks

## Playing the Game

Euchre is a trick-based card game. A trick is when someone leads with a card and each player plays a card of the same suit. If you do not have a card in that suit, you may play any card. The trick is won by the player who plays the highest card in the suit of the first card played, or the highest trump. Euchre is played with a deck of 24 cards, nine through ace of each suit. Aces are high, except in the trump suit where the jack of that suit is high, followed by the jack of the same colored suit, followed by the ace, king, queen, ten and nine.

The following are the basics you need to know to play **Professional Euchre**:

- Click on a card in your hand with the left mouse button to play or discard it.
- Click on a card in your hand with the right mouse button, and continue to hold the button down, to select it to be moved to another location in your hand. Move the mouse to the desired location of the selected card and release the button.

To play **Professional Euchre**:

1. After the cards are dealt and the top card of the remaining 4 cards has been turned up, each player, beginning with the player to the left of the dealer, decides whether they wish to "call it up" or not. Should everyone pass, the dealer may decide whether to "pick it up" or not. If the dealer decides not to pick it up, each player then has the opportunity to "call trump". Should everyone pass again, the dealer may call trump. If the dealer does not call trump, the deal is passed to the left and the cycle repeats.
2. If someone has called up or picked up, this becomes the trump suit. If someone has called trump, this is the trump suit. The player to the left of the dealer must lead the first trick.
3. Each player, moving clockwise around the table, selects a card to play. If you do not have a card in this suit, you can play any card.
4. The player who played the highest card in the suit of the first card played or the highest trump, takes the trick and starts the next trick.
5. The round continues until all cards are played.

## Understanding the Rules

The following rules apply when playing **Professional Euchre**:

- The highest ranking card in the suit of the first card played or the highest trump wins the trick.
- You must follow suit when possible. For example, if the first card played is a Spade, you must play a Spade if you have one in your hand.
- If unable to follow suit (you do not have a card in the suit that was played first), you may play any card.
- The game is over when a team reaches a score of 10.

## Using Strategy

To be a successful Euchre player, you must keep track of what others play. If a player plays a card in a suit other than the one led, this may give you an indication of what is in their hand. While the tricks are being played, you need to keep track of whether the Left (Jack of trump suit) or the Right (Jack of the same color suit) have been played and whether all of the cards of a given suit have been played. After a little practice you will get a better feel for which card to play and especially which card to lead. You may, of course, always use the hint system.



## Register Professional Euchre

Registration supplies the right to the continued use of **Professional Euchre** after the 30 day free trial. It does not rescind the [legal disclaimer](#) of liability under which **Professional Euchre** is used.

Registration will provide you with the following benefits:

- Free Product Support for 90 days
- Information on updates to this software and on any future software
- You will receive a registration code so that your copy of this software does not display reminder screens

For use on a single computer, registration is only **\$18 US!**

### COMPUSERVE ORDERS:

To register using CompuServe, type GO SWREG, ID# 8077.

### MAIL ORDERS:

Please make a check or money order payable to:

**Eric Fildebrandt**

and send it along with the [registration form](#) to:

**P.O. Box 1571  
Mt. Pleasant, SC 29465**

### SUPPORT:

You may address technical problems or suggestions to the above address or via e-mail to the following CompuServe address:

CompuServe 76326,1470

If you have an e-mail address, please include it with your registration. That way I will be able to get your registration number to you sooner.



## What is Shareware?

Shareware distribution gives users a chance to try software before buying it. If you try a Shareware program and continue using it, you are expected to [register](#). Individual programs differ on details -- some request registration while others require it, some specify a maximum trial period. With registration, you get anything from the simple right to continue using the software to an updated program with printed manual.

Copyright laws apply to both Shareware and commercial software, and the copyright holder retains all rights, with a few specific exceptions as stated below. Shareware authors are accomplished programmers, just like commercial authors, and the programs are of comparable quality. (In both cases, there are good programs and bad ones!) The main difference is in the method of distribution. The author specifically grants the right to copy and distribute the software, either to all and sundry or to a specific group. For example, some authors require written permission before a commercial disk vendor may copy their Shareware.

Shareware is a distribution method, not a type of software. You should find software that suits your needs and pocketbook, whether it's commercial or Shareware. The Shareware system makes fitting your needs easier, because you can try before you buy. And because the overhead is low, prices are low also. Shareware has the ultimate money-back guarantee -- if you don't use the product, you don't pay for it.





## Disclaimer - Agreement

Users of **Professional Euchre** must accept the following disclaimer of warranty:

"**Professional Euchre** is supplied as is. The author disclaims all warranties, expressed or implied, including, without limitation, the warranties of merchantability and of fitness for any purpose. The author assumes no liability for damages, direct or consequential, which may result from the use of **Professional Euchre**."

**Professional Euchre** is a "[shareware](#) program" and is provided at no charge to the user for evaluation. Feel free to share it with your friends, but please do not give it away altered or as part of another system. The essence of "user-supported" software is to provide personal computer users with quality software without high prices, and yet to provide incentive for programmers to continue to develop new products.

If you find this program useful and find that you are using **Professional Euchre** and continue to use **Professional Euchre** after 30 days, you must make a [registration](#) payment of **\$18 US** to **Eric Fildebrandt**. The **\$18 US** registration fee will license one copy for use on any one computer at any one time. You must treat this software just like a book. An example is that this software may be used by any number of people and may be freely moved from one computer location to another, so long as there is no possibility of it being used at one location while it's being used at another. Just as a book cannot be read by two different persons at the same time.

Commercial users of **Professional Euchre** must register and pay for their copies of **Professional Euchre** within 30 days of first use or their license is withdrawn. Site-License arrangements may be made by contacting **Eric Fildebrandt**.

Anyone distributing **Professional Euchre** for any kind of remuneration must first contact **Eric Fildebrandt** at the address listed in the registration section for authorization. This authorization will be automatically granted to distributors recognized by the (ASP) as adhering to its guidelines for shareware distributors, and such distributors may begin offering **Professional Euchre** immediately (However **Eric Fildebrandt** must still be advised so that the distributor can be kept up-to-date with the latest version of **Professional Euchre**).

You are encouraged to pass a copy of **Professional Euchre** along to your friends for evaluation. Please encourage them to register their copy if they find that they can use it. All registered users will receive a copy of the latest version of **Professional Euchre** and will be informed of any new products.

To register **Professional Euchre** select "Registration" from the "Help" menu or select "Register Professional Euchre" on the "Contents" screen of this help system. You can also select any of the hyper links pertaining to registration in the above text.

## **Audio**

- This option toggles the audio on/off.

## Hints

- This option toggles the hint system on/off. The hint system will provide you with hints on which card to discard and which card to play. On the BEGINNER level, the card will be "popped-up" for you automatically. On the ADVANCED level, a button will be displayed which you may press if you would like a hint.

## **View all Hands**

- This option toggles viewing all of the cards in everyone's hand on/off.

## **Autoplay**

- This option toggles autoplay on/off. When autoplay is on, the computer plays for everyone, allowing you to watch.

## **Speed**

- This option sets the speed of play. This affects how fast text is displayed and how fast cards are played.

## **Background**

- This options allows you to change the background color (card table).

## **Names**

- This option allows you to change the player's names.



## **Deck**

- This option allows you to change the appearance of the deck (back of cards)

## Level

- This option allows you to change the level of play. On the BEGINNER level, the computer opponents will "call it up" or "pick it up" more often and will play less "perfect" than on the ADVANCED level. On the ADVANCED level, the computer opponents will play as well as our algorithm allows them to. Your partner always plays on the ADVANCED level.

# Registration Form

Professional Euchre 1.2 Registration Form - just print it, fill it out, and mail it!

To register Professional Euchre, send this form and a check to Eric Fildebrandt, P.O. Box 1571, Mt. Pleasant, SC 29465. Payments must be in US dollars drawn on a US bank, or you can send international postal money orders in US dollars.

Professional Euchre Single Copy \_\_\_\_\_ copies at \$18 each = \_\_\_\_\_

Total payment \_\_\_\_\_

Price guaranteed through December 1996.

Name: \_\_\_\_\_

Company: \_\_\_\_\_

Address: \_\_\_\_\_

City, State, Zip: \_\_\_\_\_

Country: \_\_\_\_\_

Day Phone: \_\_\_\_\_ Eve: \_\_\_\_\_

Electronic Mail address: \_\_\_\_\_

Where did you get Professional Euchre?

\_\_\_\_\_

Comments:

Any questions about the status of refunds, registration options, product details, technical support, volume discounts, dealer pricing, etc., must be directed to Eric Fildebrandt, P.O. Box 1571, Mt. Pleasant, SC 29465 or by e-mail to 76326,1470 on CompuServe (Internet: 76326.1470@compuserve.com).

