



Exchange's Help File [shareware version]

This Help File and Exchange are Copyright Shawn Kresal © 1994-1995 All Rights Reserved.

[Contacting the Author](#)

[Warranty Information](#)

Installing and Running Exchange

Which files do I need to run Exchange?

How do I install Exchange on my computer?

System Requirements

More on Exchange

All about registering

Accuracy of Exchange

Where can I get current exchange rates?

Where can I get the latest version of Exchange?



Which files do I need to run Exchange?

Exchange will usually come to you in the form of a compressed ZIP file. It must contain ALL of the files listed below in order to be installed properly. If it does NOT contain one or more of these files then you have an incomplete copy. Click [here](#) for information on how and where to get a complete, up-to-date copy.

***** NOTE: You must have VBRUN300.DLL to reinstall and run Exchange.*****

- **CMDIALOG.VB_** Provides standard dialog boxes/Help file integrater
- **COMMDLG.DL_** Library for standard dialog boxes
- **CTL3D .DL_** 3D message box library
- **EXCHANGE .EX_** the program
- **ORDERFRM.WR_** order form
- **README .HLP** the file you're currently using
- **README .TXT** ASCII text version of this file
- **SETUP .EXE** installation program
- **THREED .VB_** Beveled 3D effects library file
- **VER .DL_** necessary windows system file

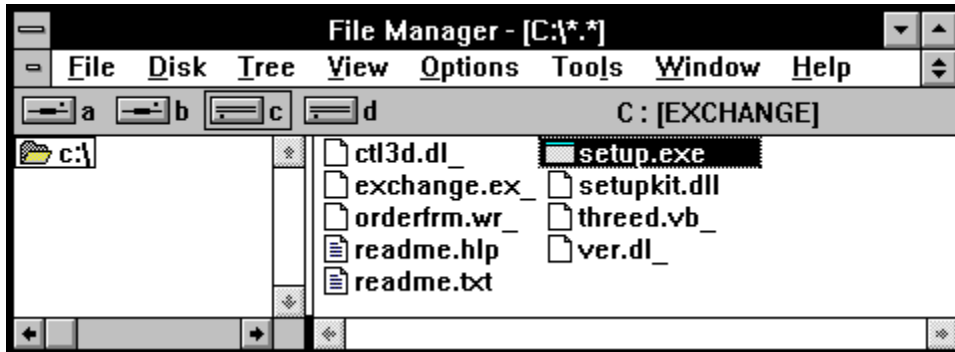


How do I install Exchange?

NOTE: *You must have VBRUN300.DLL to properly install and run Exchange.*

- 1) Run Windows
- 2) Start File Manager
- 3) While running File Manager, double click on the file **SETUP.EXE** that came with this set of files. The other files that came bundled with this file must be found in the same directory as SETUP.EXE for the installation to succeed.

That's all there is to it! The rest is done for you automatically.





System Requirements

ESSENTIAL:

- At least a 80386 processor or compatible system
- Hard disk
- EMS memory
- Windows 3.1 or greater
- VBRUN300.DLL

HIGHLY RECOMMENDED:

- mouse
- printer



What do I get for registering?

[Registering through CompuServe](#)

[Print Out Order Form](#)

By registering Exchange you will receive:

- Complete custom currency options
- Ability to print out a hard copy of all the exchange rates
- Full 60 day upgrade protection
- Removal of the opening "About" screen
- All up-to-date exchange rates pre-loaded
- The latest version of Exchange

The registration fee is US\$15.00. If you find this program to be useful, worthwhile, valuable, or beneficial, please support the author's efforts by registering. Your support is the only means that the shareware author has for continuing to bring you quality software.

Please send your support to:

Shawn Kresal
P.O. Box 25834
Fresno, CA 93729

Please add US\$1.50 for shipping and handling. Check or money order must be payable in US Dollars. Allow 3-4 weeks for delivery; slightly longer if paying by personal check. Orders outside the continental US please add an additional US\$3.00.



DISTRIBUTION POLICY

This version of Exchange is shareware and may be copied and distributed freely for non-commercial use (BBS's, online services, and catalog vendors included) as long as all the files are included and no part of any file is changed.

DISTRIBUTION VIA CATALOGS: Catalog vendors are automatically granted a license to distribute Exchange via their catalog provided they agree to abide by the following terms:

- a) A copy of the first catalog or listing advertising the distribution of Exchange will be sent to the author.**
- b) Updated versions of Exchange sent to the distributor will be reflected in what is distributed and advertised in the catalog or listing as soon as possible.**
- c) Problems or complaints about Exchange will be reported to the author.**

NO WARRANTY

By using, or attempting to use the program Exchange, you agree to the following conditions:

The use of the program is at your own risk. Exchange is provided "as is" without warranty of any kind, either express or implied, including, but not limited to, the implied warranties of merchantability and fitness for a particular purpose. Should Exchange prove defective, you assume the cost of all necessary repair or correction.

In no event will the author be liable to you for damages, including any lost profits, lost monies, any damage to your mental or physical health, or other special, incidental or consequential damages arising out of the use, or inability to use the program.



Contacting the Author

You can [register](#) Exchange with the author at the US Postal address below or on [CompuServe](#). Please send bug reports to either e-mail address that follows.

Comments and suggestions are always welcome. Many of Exchange's users have given their feedback to the author only to have their ideas turned into features in future versions. Your voice counts!

Internet e-mail: shawn_kresal@csufresno.edu

CompuServe e-mail: 72066,1750

US mail: Shawn Kresal
P.O. Box 25834
Fresno, CA 93729



VBRUN300.DLL

(Microsoft's Visual Basic 3.0 Run Time Dynamic Linked Library)

To run Exchange and its installation program, you **must** have the file VBRUN300.DLL.

HOW TO OBTAIN

This file is readily obtained from CompuServe (GO WINSHAR), the Internet, America

Online, and most any BBS from around the globe. If you have access to the World

Wide Web, you can get VBRUN300.DLL from the [author's home page](#).

WHERE TO INSTALL

VBRUN300.DLL must be in your 'path' (see your MS-DOS manual for more about your path) or, better yet, in your windows\system directory. Look in this directory if you are not sure whether or not you have VBRUN300.DLL.

OTHER VERSIONS

Note that VBRUN100.DLL and VBRUN200.DLL are **not** substitutes for VBRUN300.DLL.



Where can I get current exchange rates?

The finance or business section of any major Newspaper is one of the best places to look for up-to-date exchange rates.

With your computer and a modem, you can also get exchange rates from these fine establishments:

[America Online](#)

[CompuServe](#)

[Internet](#)



Exchange Rates via the Internet

There are many places you can get exchange rates from on the internet. The Holt Report is the recommended source of Information. Here are a few examples from each of it's most popular Internet routes.

usenet	misc.invest (posted daily)
gopher	wuecon.wustl.edu /Washington Univ Econ Gopher/Holt's Stock Market Reports
ftp	wuecon.wustl.edu /gd/holt (look for holt.[mmddyr] as in holt.122594 for the Dec 25, 94 report)
www	gopher://una.hh.lib.umich.edu/00/ebb/monetary/tenfx.frb or the <u>author's www home page</u>

Since the internet is in a constant state of flux, these addresses could change at any time without warning. If you find a better place to acquire exchange rates, please [email the author](#) so that your great discovery can be noted in future versions.



Exchange Rates via CompuServe

Of the basic services, the Wall Street section of the Associated Press Online (**GO APO**) is one of the best ways to get dozens of current exchange rates. Look for an article titled "New York Foreign Exchange". It is generally posted around Wednesday.

Continuously updated up-to-the-minute quotes are available in the Global Reports service (**GO GLOREP**).

Quotes on over 150 currencies are available on a next day basis in the historical quote databases (**GO PRICES**, **GO QSHEET**, or **GO MQDATA**). You can **GO INDICATORS** to search for the ticker symbols to use in these services.

Many of these areas are surcharged, **GO RATES** for complete details.



Exchange Rates via AOL

On America Online, you can get a wealth of exchange rates by accessing keyword **TRAVELER**. Look for the entry titled **Currency Exchange Rates**. Rates are updated every Thursday.



Latest Version of Exchange

You can always acquire the very latest version of Exchange from CompuServe or from the author's home page on the World Wide Web.

On CompuServe: Windows Shareware Forum (**GO WINSHAR**)
LIBRARY 10 - General Win Apps
Search by keywords EXCHANGE and RATES

On WWW: [Author's Home Page](#)



Author's WWW home page

The author's home page contains such things as:

- The latest shareware version of Exchange.
- Exchange rates updated daily at noon EST.
- [VBRUN300.DLL](#) online and ready to download.
- Great links to travel sites!
- Much, much, more!

Just point your web browser towards:

http://osiris.csufresno.edu/Personal/CSci/Students/Shawn_Kresal/Home.html



Registering through CompuServe

If you are a member of CompuServe, you can register Exchange online. This is the fastest and easiest method of registering. Your registered program will be emailed to you within three working days.

How to Register on CIS:

1. Use the Shareware Registration Forum (**GO SWREG**).
2. Designate in what section of the world you reside.
3. Choose option number 2 "Register Shareware". The "Search Database by" screen will then be presented to you.
4. Choose the first option: "Registration ID". **The registration ID for Exchange is 4343.**

After you do this, CompuServe will immediately email me with a confirmation of your registration. The registered version of Exchange will then be **e-mailed to your CompuServe address** where you can quickly and conveniently download it to your computer.

The cost for registering on CompuServe is US\$15 and there are no shipping and handling charges.

[CompuServe's Message About How to Register Online.](#)

CompuServe's Message About How to Register Online

The Shareware Registration database contains descriptions of hundreds of shareware programs designed for a variety of platforms and purposes.

To register a program, you must first find its description in the Shareware Registration database.

To begin, select "Register Shareware" from the previous menu. Upon entering the registration program you will receive a list of regions for use by the Shareware Author that allows them to determine the appropriate shipping and handling fees. Select the region that corresponds to your mailing address.

The total number of files in the registration database will be displayed at the top of the next screen, followed by a list of search criteria. You may search for your program's description by its TITLE, FILE NAME, File REGISTRATION ID, AUTHOR'S COMPUSEVE ID, and AUTHOR'S NAME. You may also search for your description by its KEYWORDS (categories). For example, to find the description of a Macintosh utility, you might use the keyword: UTILITY.

When Authors submit their descriptions to the Shareware Registration database, their descriptions receive a REGISTRATION ID. If you know the REGISTRATION ID of the program description in the database, you may enter it under the first option on the search criteria display. You will then navigate directly to the program's description. This is the easiest and fastest method of registering a program.

SELECT the search criteria that you want to use to narrow your search, then enter the text in the prompt field, and select "OK." You will be returned to the search screen. Sometimes after you enter search criteria your search yields a large number of "matches" in the database. The search menu offers you the ability to NARROW your results further, DISPLAY SELECTED TITLES (the list of "matches") or to BEGIN A NEW SEARCH.

Once you have narrowed the search to the number you want, DISPLAY SELECTED TITLES to receive a list of programs that meet the criteria in the database. Search the program that you wish to register from the list to receive a DESCRIPTION and continue the registration process.

Read the description carefully to verify that you wish to register the program. The description details the program, its capabilities, and the benefits of registration. Selecting MORE will provide details on the file's size, where to find the file on CompuServe, and how to contact the Author. Be sure to note the program's registration and shipping/handling (Ship/Hand) fees. When you register any program, the registration fee is charged to your CompuServe account.

To register this software select to REGISTER. To return to the list of available files, select CANCEL. When you select to REGISTER, you will be prompted to enter your full name, company name (optional), your complete address, your phone number (optional), the total number of copies of the program, and the disk size that you wish to register. Select CONTINUE to see the registration confirmation display that notes the total charges that would be applied to your CompuServe account. If you do not wish to continue, selecting CANCEL will return you to the list of files.

Select SEND to complete your registration and to send the information to the Author.
Select CANCEL to cancel registration of the program.

If you have any questions or concerns about Shareware Registration, send a message to the Shareware Administrator by selecting the "Provide Feedback" option at the Shareware Registration menu. You will usually receive an answer within 48 hours.

Adding custom currencies

The custom currency feature is only available with the registered version of Exchange. Click [here](#) for more on how to register.

Is there a country that you don't see in Exchange that you'd like to have added? [Contact the author](#) and let him know!



Accuracy of Exchange

Entering Rates

When you enter an exchange rate for a currency, it is accurate to 4 decimal places. Any values entered beyond 4 decimal places will be rounded to the nearest ten-thousandth of a unit. The values you enter will always be accurate to +/- 0.0001. For example, the value 0.1234 is a completely valid rate where no adjustments are necessary because the value only extends for 4 decimal places. However, entering 0.12345 would cause the entered rate to be rounded up, resulting in the adjusted value of 0.1235 being saved as the exchange rate. Moreover, entering 0.12343 would cause the entered rate to be rounded down to 0.1234.

Reading Rates

Exchange's main screen (the "output" screen) shows equivalent money values accurate to 4 decimal places. If a calculated value goes beyond 4 decimal places, the result is rounded to the nearest ten-thousandth. For example, if a calculated equivalent value was 1.23456, this value would be rounded up to 1.2346. Likewise, if the amount calculated were 6.54321, it would be rounded down to 6.5432.

Verification

Exchange's calculation algorithms have been verified with Excel and Quattro Pro on an Intel 80386 processor. My TI pocket calculator and my Ticonderoga #2 then verified the values generated by the spreadsheets.



What is Shareware?

Shareware distribution gives users a chance to try software before buying it. If you try a Shareware program and continue using it, you are expected to register. Individual programs differ in detail -- some request registration while others require it, some specify a maximum trial period. With registration, you get anything from the simple right to continue using the software to an updated program with printed manual.

Copyright laws apply to both Shareware and commercial software, and the copyright holder retains all rights, with a few specific exceptions as stated below. Shareware authors are accomplished programmers, just like commercial programmers, and the programs are of comparable quality. The main difference is in the method of distribution. The author specifically grants the right to copy and distribute the software, either to all and sundry or to a specific group. For example, some authors require written permission before a commercial disk vendor may copy their Shareware.

Shareware is a distribution method, not a type of software. You should find software that suits your needs and pocketbook, whether it's commercial or Shareware. The Shareware system makes fitting your needs easier, because you can try before you buy. And because the overhead is low, prices are low also. Shareware has the ultimate money-back guarantee -- if you don't use the product, you don't pay for it.



Print Order Form

To print out this order form, click on "File", then "Print Topic".

***** Registration Form For EXCHANGE ***

**

Please send a check or money order to:

**Shawn Kresal
PO Box 25834
Fresno, CA**

93729

Name _____

Address _____

City _____ State _____ Zip Code _____

E-Mail Address _____

Please check your preferred disk size: _____ 3½" _____ 5¼" HD

How did you acquire this program? (please check one)

_____ CompuServe _____ Internet _____ AOL _____ CD-ROM

_____ Local BBS _____ Software Distributor _____ Other

_____ Number of Copies of Exchange: _____ @ \$15.00 each = \$

Shipping and Handling
\$ 1.50

Orders outside of continental U.S. please
add an additional \$3 for postage and handling
\$ _____

Total \$ _____

Thank you for your order.

Please include a check or money order **payable in US dollars** for the amount shown on the "Total" line above. Allow 3-4 weeks for delivery; slightly longer if paying by personal check; significantly longer if paying with rubles ;-).



Upgrade Protection

If a major release* of Exchange is released within 60 days of your registration, you will receive the upgrade for the new version completely free of charge. No cost. No postage and handling fees. Absolutely Free!

You need not take any action, it will be mailed to you automatically.

*A major release is defined as any 0.5 or greater upgrade over the current version. I.e., if you register version 2.0 and version 2.5 or greater is shipped out within 60 days, you will receive that newer version free.



Options

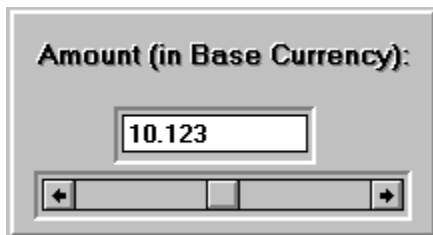
Change Calculator Path

You can substitute any program to execute instead of the default Windows calculator applet when you click on Run°Calculator. Simply click Options then Change Calculator Path. You will be presented with a path-type dialog box for you to select your new calculator of choice. Find the program you want, then click Ok.

Now when you click the Run°Calculator menu option from Exchange's main screen, your calculator-of-choice will execute.

Scroll-Bar Input Option

As in previous versions of Exchange you can control how you input your numbers. Either by typing them in directly or by clicking on a horizontal scroll bar. By default the scroll bar is on. To de-activate it, simply click Options°Scroll Bar Input and then either Yes or No.



Welcome Screen Status Option

To see what Exchange is doing when it is loading, turn On the Show Loading Status At Welcome. Turning this option on will not slow down the loading of Exchange.

