



## Contents



EPSON



[Quick Guide to Using Help](#)



[About the EPSON Stylus Series Printing System](#)



[Driver Menus](#)



[Printing Procedures](#)



[Spool Manager, Despooler, and Status Monitor](#)



[Tips for Printing in Color](#)

[Routine Maintenance](#)



[Troubleshooting](#)



[Copyright and Trademark Information](#)



## Contents



[Quick Guide to Using Help](#)



[To Find Information In This Help](#)



[For Help About a Dialog Box or Message](#)



[About the EPSON Stylus Series Printing System](#)



[Driver Menus](#)



[Printing Procedures](#)



[Spool Manager, Despooler, and Status Monitor](#)



[Tips for Printing in Color](#)

[Routine Maintenance](#)



[Troubleshooting](#)



[Copyright and Trademark Information](#)



## To Find Information In This Help

You can use the Epson Stylus Series Help Window just like the Help windows you find in other applications. If you are not familiar with how Help operates, here are a few quick procedures to get you started.

### Using the Help Buttons

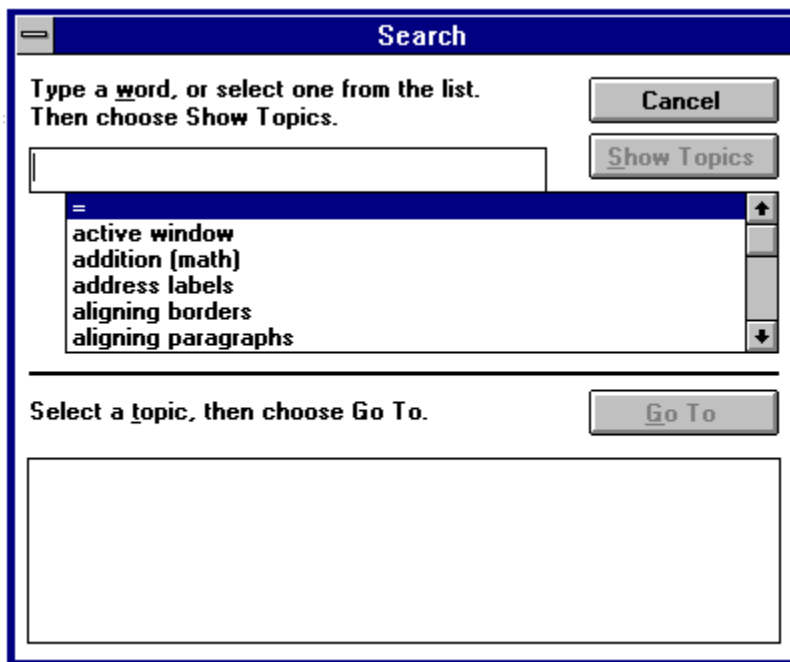
There are seven buttons near the top of this Help Window. You can "press" a button by clicking on it with your mouse.

**To return to and view the main contents:**

Press 

**To search for information about a particular topic:**

1. Press . The following window appears on your monitor:



2. Type or select a key word and then press



3. Select a topic from the list and then press



**To go back to the screen that you viewed previously:**

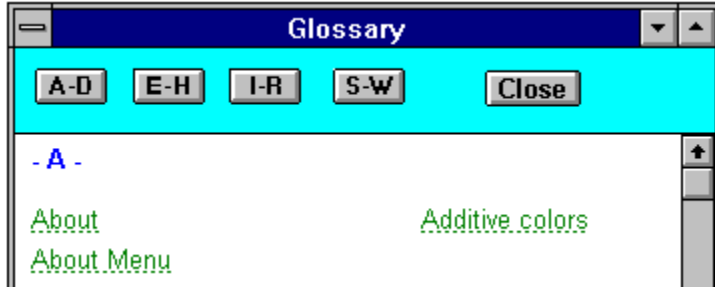
Press 

**To jump back to a topic that you have previously viewed:**

1. Press **History**
2. Select the topic that you want to review from the history list.

**To display a Glossary of terms:**

1. Press **Glossary**. The following Glossary Window appears:



2. Use the **A-D**, **E-H**, **I-R**, or **S-W** buttons to jump to the area you want to check.
3. Select the term that you want to see a definition for.
4. Close the Window when you are finished.

**To move on to the next topic in the browse sequence:**

Press **<<**

**To go back to the previous topic in the browse sequence:**

Press **>>**

**See Also**

[For More Information About Using Help in Windows](#)

## For Help About a Dialog Box or Message

Hypertext and Hypergraphics provide a quick way to get more information about a dialog box or message on the screen. They also provide a quick way to jump to other related topics.



**Important!** When you pass over hypertext or hypergraphics, your cursor changes from an arrow to a pointing finger.

Hypertext displays on your screen as green text, as shown below:

The printer driver includes on-screen examples.

When you select hypertext with a dotted underline, Help displays a pop-up box that contains more information about the term. To close the pop-up box, click a mouse button or press the **Esc** key.

When you select hypertext with a single underline, Help jumps directly to the underlined topic.

Hypergraphics are usually buttons that you press to perform a function or areas of a picture that you can select to display more information about the image.

### See Also

[For More Information About Using Help in Windows](#)

## **For More Information About Using Help in Windows**

To learn more about how to use all of Help's features, refer to your Windows documentation or select **Help** from the Help Menu.

## **Browse Sequence**

A browse sequence follows a path through the topics in Help in a certain order.

The browse sequence in the Epson Stylus Help Window is designed to provide a tutorial on how to use the most important features of your printer driver.



## About the EPSON Stylus Series Printing System

Welcome to the EPSON® Stylus™ Series printing system, where printing is fast and effortless and your output is customized for all your printing needs.

You install the EPSON Stylus Series printing system the same way as any other Microsoft® Windows® printer driver, but the EPSON driver has some major advantages over the conventional Windows technology:

The printer driver includes on-screen examples of how your images will print as you change the printer driver settings.

The printer driver screen is divided by simple-to-use folder tabs that follow the graphic style of Windows.

The software release time is much quicker than conventional printer drivers, even when you use sophisticated print settings, such as error diffusion.

Colors are richer and truer to the screen image due to the printer drivers automatic color adjustment settings for screen-to-printer WYSIWYG.

Photographs look realistic and graphics are smoother because of the drivers advanced diffusion halftoning and MicroWeave features.

Print time is generally significantly shorter than with other ink jet printers, even when the driver is processing color images or interfacing with advanced 24-bit per pixel devices.

The status monitor in the Despooler displays the current printer status, and if you are using Windows 95, the cartridge ink levels.

In addition, you can use a wide variety of printer driver options to create fantastic printed images without sacrificing overall system performance.

### **See Also**

[Technical Description](#)





## **EPSON Stylus Series Printer Driver**

The printer driver is usually accessed through your applications **Printer Setup** option or from the Printers icon of the Microsoft Windows Control Panel.

The printer driver allows your computer to use all of the features and capabilities of your EPSON Stylus Series printer.

## **Release Time**

This is the time that it takes for control to return to you from the Print option within your application.

The EPSON Stylus Series printing system returns you to your application quickly so that you can continue working while your printing completes in the background.

## **WYSIWYG**

What You See Is What You Get. Generally with the EPSON Stylus Series printing system, what you see on the screen is what you get on the printer in terms of colors, image size, print density etc.

## Error Diffusion

Most printing systems use dithering to represent an image, which can give quite a grainy result. The EPSON Stylus Series printing system supports error diffusion printing and uses an advanced rendering technique to generate a smoother image. Graduated fills look better, images look clearer and photographs look much closer to the original.

With very complex images, error diffusion printing can sometimes take a little longer than dithering but generally the results are well worth it. You will have to experiment with the halftoning method that best suits the picture that you are printing.

## Dithering

When images are printed using the dithering selections from the halftoning tab, the EPSON Stylus Series printing system uses a matrix of dots to represent the image. This is in common with other Windows printer drivers. You will have to experiment with the halftone method that best suits the picture you are printing. The error diffusion setting should give the best results in the majority of cases.

## **MicroWeave**

When MicroWeave is selected, the EPSON Stylus Series printer driver enhances the quality of printed images. This is done by passing the print head over the page multiple times, laying down parts of the image on each pass. This technique reduces unwanted banding in images.

Images printed by other ink jet printers often have distracting horizontal bands that appear darker or lighter than the rest of the image. With the MicroWeave option turned on, these bands in images are minimized and your EPSON Stylus output looks truly professional. MicroWeave does not affect text output quality.

Since MicroWeave requires several passes during printing, output is slower for monochrome printing. To save time you should use it only for presentation quality images.

MicroWeave does not affect color printing speed significantly so you should use it for all color printing.



## The EPSON Stylus Printing System - A Technical Description

For those users who are familiar with the internal operations of Microsoft® Windows®, the following technical description may be of interest.

The EPSON Stylus Series printing system is an advanced Windows GDI-style software printing system which operates as follows:

The application is told by the printer driver that the printer is a raster device but can render the entire image in a single band. The driver also reports that certain advanced printing options are supported. All of these special capabilities save the application work and avoid the overhead of having to replay the picture multiple times.

The GDI commands necessary to represent the image are encoded into a highly-optimized journal file. The application releases when generation of the journal is complete. In comparison with the spool files generated by standard Windows drivers, Journal files are very compact and are the same size regardless of whether the print is in color or monochrome. Holding the information in a journal means that the entire document can be replayed to simulate multiple hardware copies or to provide last-to-first printing options.

The EPSON Spool Manager is responsible for initiating the EPSON Despooler which replays the journal file back to the mini-driver for the target device. Both the EPSON Spool Manager and EPSON Despooler use a highly-efficient, multi-threaded tasking system to ensure minimum impact on the foreground application.

Additionally, the EPSON Despooler displays the following status items when the driver is used with Windows 95 and the computer hardware is equipped with a bi-directional parallel port:

- Printer status (icon) Time out, During checking, IQ Received, During printing, Low ink
- Current ink quantity (bar graph): Black, color



## Windows GDI

Graphics Device Interface (GDI). This is the part of the Microsoft Windows environment that allows programmers to draw lines, circles, polygons, text and control other graphics elements on the output device (screen, printer, plotter etc.).





## **Journal File**

The EPSON Stylus Series printing system generates a compact journal file that contains a complete description of your print job in a form that can be processed easily. This journal file is similar to a tape recording in that it can be played, replayed, and rewound in order to process your print job.



## Copyright and Trademark Information

# EPSON

The EPSON Stylus Series printing system is a development of Software 2000 Ltd., Oxford, England.

Portions Copyright © 1994,1995,1996 Seiko Epson Corporation

Copyright © 1994,1995,1996 Software 2000 Ltd., Oxford, England

All rights reserved.

**All other trademarks of their respective owners are recognized. EPSON disclaims any and all rights in those marks.**



## Contents



[Quick Guide to Using Help](#)



[About the EPSON Stylus Series Printing System](#)



[Driver Menus](#)



[Using the Driver Menus](#)



[Document Type](#)



[Paper Type](#)



[Printing Mode/Options](#)



[Image Settings](#)



[Halftoning](#)



[About](#)



[Printing Procedures](#)



[Spool Manager, Despooler, and Status Monitor](#)



[Tips for Printing in Color](#)

[Routine Maintenance](#)



[Troubleshooting](#)

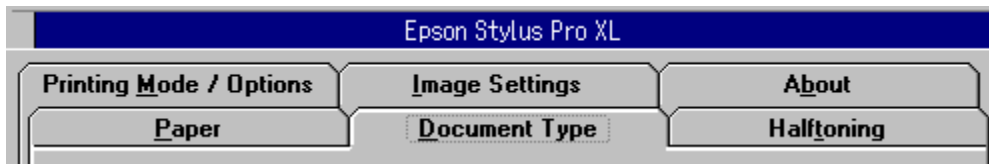


[Copyright and Trademark Information](#)

**About**

## Using the Driver Menus

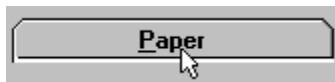
When you display the printer driver system, you see the following six folder tabs at the top of the window:



The folder tabs describe the six main menus that you can access to make printer settings.

### Selecting A Folder

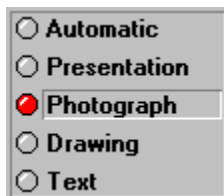
To select a specific folder:



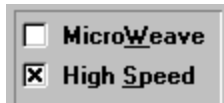
Click the tab with your mouse **or** hold down the **Alt** key and press the underlined character in the tab.

### Choosing Settings

When you have selected a folder, you can select settings in any of the following ways:



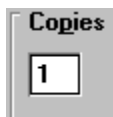
Click the option button or name



Click the check box



Click the drop-down list box, then click the item



Click the text box, then enter the number.

### Saving Settings

To save the settings you have selected:

Click on



This exits you from the driver setup and saves your selections. Your settings stay in effect until you make additional changes and choose the **Ok** button again.

## Restoring Default Settings

To restore the driver's factory default settings:

Click on



## Exiting the Driver

There are two ways to exit the setup screen:

To exit the printer driver setup and save all the settings you made:

Click on



To exit the printer driver setup and ignore all changes you made:

Click on



## See Also

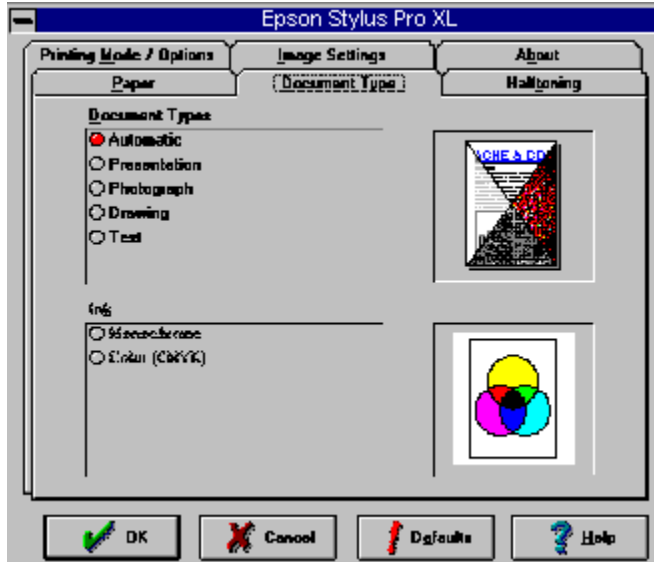
[A Quick Guide to Using Help](#)



## Document Type Menu

To display the menu that lets you choose the type of document you are printing:

Click on **Document Type** You see:



Use the **Document Type** menu to select the:

Document Type

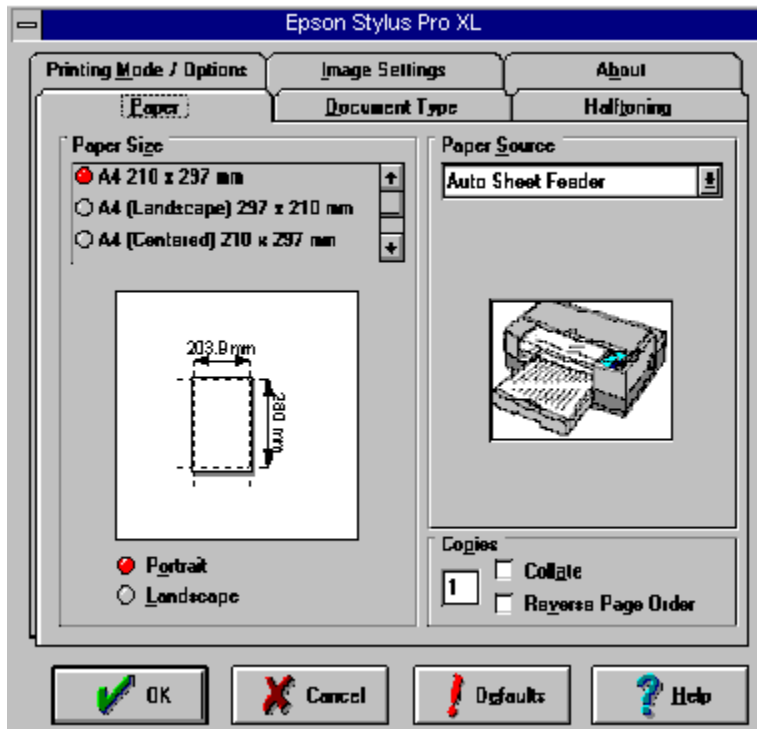
Ink Type



## Paper Menu

To display the menu that lets you choose the type of paper you are printing on:

Click on **Paper** You see:



Use the **Paper** menu to specify the:

Paper Size                      Paper Orientation

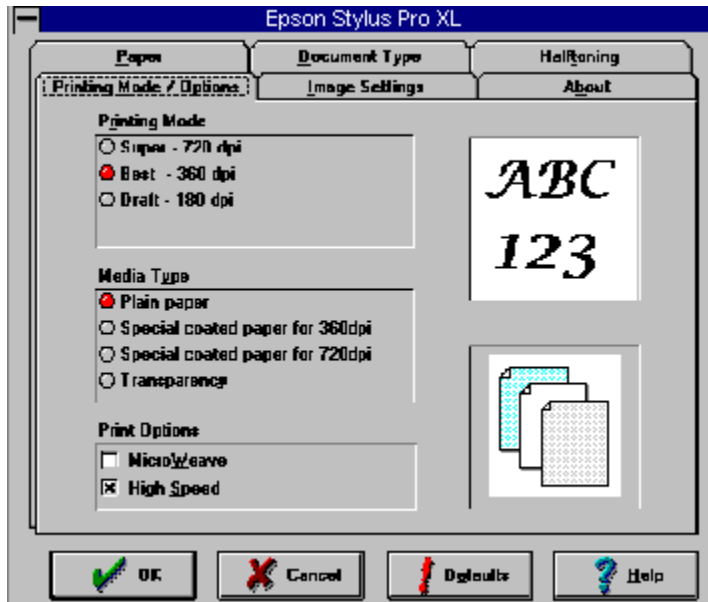
Paper Source    Copies / Collation



## Printing Mode / Options Menu

To display the menu that lets you choose from various printing modes:

Click on **Printing Mode / Options** You see:



Use the **Printing Mode/Options** menu to select the:

Printing Modes

Media Type

Print Options





## Image Settings Menu

To display the menu where you can change the printer's image settings:

Click on **Image Settings** You see:



Use this menu to modify a document's color (or grayscale) settings.

If you are not familiar with color printing processes and you simply want to print high-quality color (or black-and-white), do not change the original settings. However, if your software does not allow you to make adjustments and you want to modify your images, experiment with the settings until you achieve satisfactory results.

Use the **Image Settings** menu to:

Adjust the Image Settings

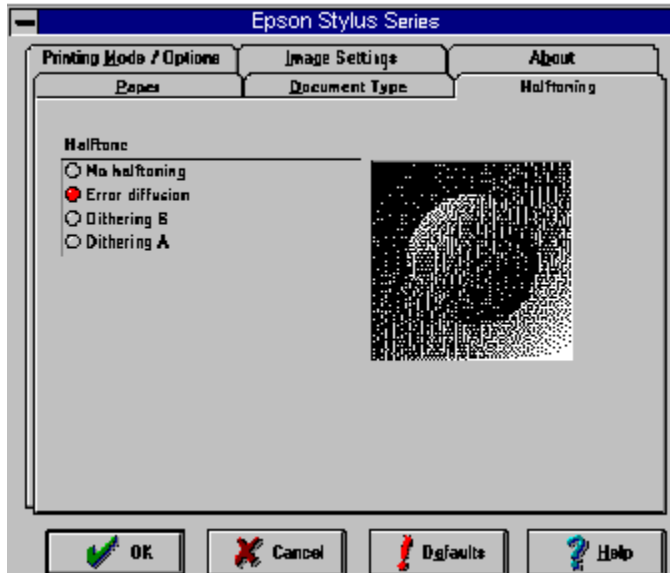
Choose the Color Matching Type



## Halftoning Menu

To display the menu that lets you choose from various halftoning methods:

Click on **Halftoning** You see:



Use the **Halftoning Menu** for:

Choosing a Halftoning Method



## Viewing Information About the Epson Stylus Series Driver

To display general information about your Epson Stylus Series printer driver:

Click on  **About**

If you need technical support for a EPSON Stylus Series printing system, it is a good idea to make a note of the version information on this tab before you call.

### See Also

[Ordering Supplies](#)

[Copyright and Trademark Information](#)



## Contents



[Quick Guide to Using Help](#)



[About the EPSON Stylus Series Printing System](#)



[Driver Menus](#)



[Printing Procedures](#)



[Choosing a Document Type](#)



[Choosing a Paper Type](#)



[Choosing the Printing Mode](#)



[Changing Image Settings](#)



[Choosing a Halftoning Method](#)



[Spool Manager, Despooler, and Status Monitor](#)



[Tips for Printing in Color](#)

[Routine Maintenance](#)



[Troubleshooting](#)



[Copyright and Trademark Information](#)

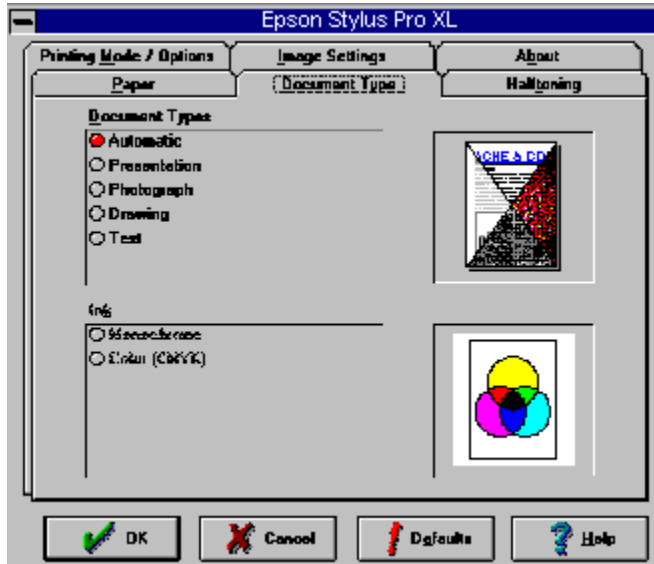


## Choosing a Document Type

To display the menu that lets you choose the type of document you are printing:



Click on  You see:



Use the **Document Type** menu to select the:

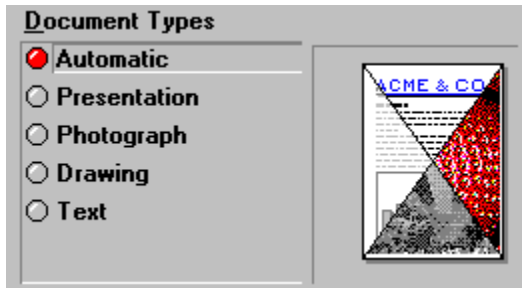
Document Type

Ink Type



## Document Type

The Document Types setting you select depends on what you want to print.



**Automatic** -- This setting lets your printer driver analyze the print data and automatically adjust the settings to obtain the best possible results. For most printing jobs, leave the option set to **Automatic**.



**Presentation** -- This setting is best for graphics-intensive documents such as presentations. Vivid color matching is selected.



**Photograph** -- This setting is best for printing photographs. Photo-realistic color matching is selected.



**Drawing** -- This setting is best when printing computer-generated illustrations. Standard color matching is selected.



**Text** -- This setting is best when printing text-only documents. Photo-realistic color matching is selected.

When you select the document type, the Halftoning and Color Matching options are set automatically as shown below:

<b>Options</b>	<b>Halftoning</b>	<b>Color Matching</b>
Presentation	Error Diffusion	Vivid
Photograph	Error Diffusion	Photo-realistic
Drawing	Error Diffusion	Standard
Text	Error Diffusion	Photo-realistic

**Note:** If you change the halftoning or color matching settings after you have selected the document type, the document type setting is not available.

## See Also

[Choosing the Color Matching Type](#)



## Ink Type

This setting determines the print colors for your document.



**Monochrome** -- This setting selects black and white printing.



**Color (CMYK)** -- This setting prints in color using combinations of cyan, magenta, yellow, and black.

## See Also

[Adjusting the Image](#)

[Choosing the Color Matching Type](#)



## **Vivid Color Matching**

Intensifies the colors and lightens the midtones and highlights of an image. Use this setting for presentation graphics, such as charts and graphics.

## **Photo-realistic Color Matching**

Increases the contrast in an image. Use this setting for color photographs.

## **Standard Color Matching**

Provides output that closely matches the original screen colors. Use this setting for illustrations.

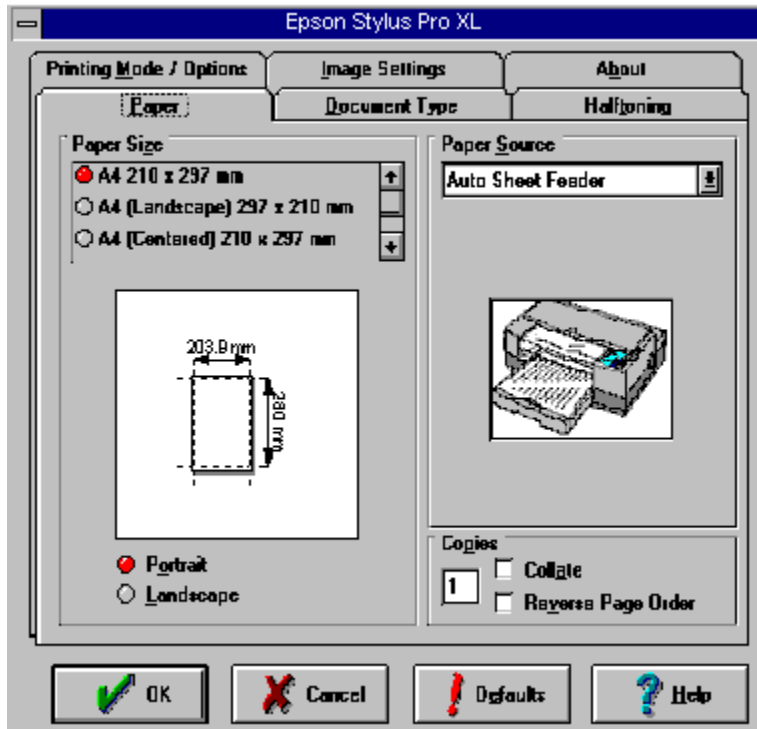


## Choosing a Paper Type

To display the menu that lets you choose the type of paper you are printing on:



Click on  You see:



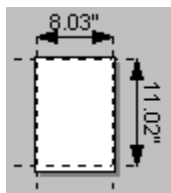
Use the **Paper** menu to specify the:

Paper Size

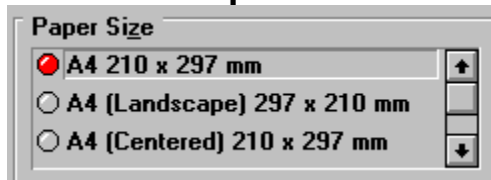
Paper Orientation

Paper Source

Copies / Collation



## Paper Size



Select the paper size you have loaded in the printer. The illustration under the list changes according to the paper size and orientation you select. Your choices are:

<b>Type</b>	<b>Dimensions</b>
Letter	8-1/2 X 11 inches
Letter (Landscape)	11 X 8-1/2 inches
Letter (Centered)	8-1/2 X 11 inches
Legal	8-1/2 X 14 inches
Legal (Centered )	8-1/2 X 14 inches
US B	11 X 17 inches
A3	297 X 420 mm
Super A3/B	329 X 483 mm
A4	210 X 297 mm
A4 (Landscape)	297 X 210 mm
A4 (Centered)	210 X 297 mm
Statement	8-1/2 X 5-1/2 inches
Executive	7.5 X 10-1/2 inches
#10 Envelope	9-1/2 X 4-1/8 inches
DL Envelope	220 X 110 mm
A6 Index card	105 X 148 mm
User defined	100 to 329 mm X 100 to 1117 mm

**Note:** Select Letter (Landscape) or A4 (Landscape) when you load Letter or A4 paper with the wide edge first. If you select Landscape as the Orientation with Letter (Landscape) or A4 (Landscape), the printing result would be the same as if you selected Portrait with Letter or A4.

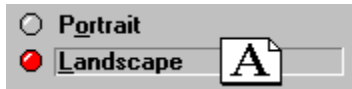


## Paper Orientation

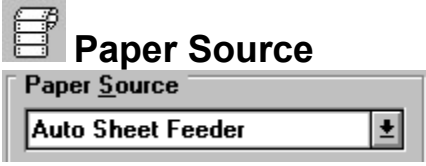
To change the orientation, click the appropriate option button.



**Portrait** -- Prints on the page upright.



**Landscape** -- Prints on the page lengthwise, which is useful for spreadsheets or presentations.



Your Stylus Series printer has a built-in sheet feeder, so you do not need to change this setting.



## Copies / Collation

These settings let you specify printing of multiple copies.

### Entering the Number of Copies

Copies

Collate

Reverse Page Order

#### To specify the number of copies:

- 1 Click in the text box.
- 2 Enter the number using your keyboard. You can enter a number from 1 to 99.

### Choosing the Collation Method

The two additional Copies options are **Collate** and **Reverse Page Order**. An **X** inside either of these check boxes indicates the option is turned on. The option is turned off when the box is empty.

#### To print multiple-page documents in sets:

Turn **Collate** on by clicking the check box.

Collate

Reverse Page Order

#### To print one or more document sets so that each is stacked in the correct order after printing:

Click both the **Collate** and **Reverse Page Order** check boxes.

Collate

Reverse Page Order

#### To print one multiple-page document so that its pages are in the right order after printing:

Click only **Reverse Page Order**.

Collate

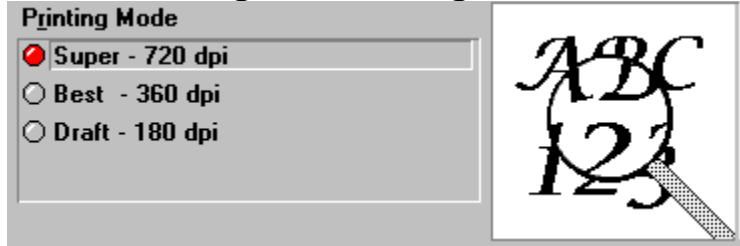
Reverse Page Order

**Note:** The above options may require additional system memory. If a memory error message appears and you are unable to print your document, you should increase system memory, decrease the number of open applications, reduce the size of your document, or turn off collation and/or reverse page ordering.





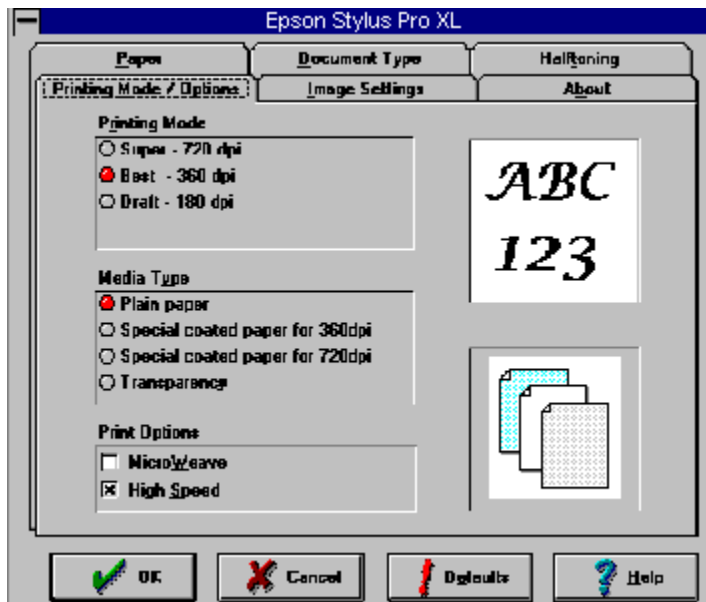
## Choosing the Printing Mode



To display the menu that lets you choose from various printing modes:



Click on  You see:



Use the **Printing Mode/Options** menu to select the:

Printing Modes Media Type

Print Options



## Printing Modes

The three available printing modes are:

 **Super** - 720 dpi



**Best** - 360 dpi



**Draft** - 180 dpi

**Note:** The higher the dpi setting, the longer the printing time.

### See Also

Media Type

Print Options

## **dpi**

dots per inch. This is the number of dots your printer can print in a one inch distance in both the horizontal and vertical dimensions. Note that if you double the dpi, you increase the total number of dots by a factor of four.

**Note:** The Printing Modes options do not necessarily yield the same resolutions in both the vertical and the horizontal directions.



## Media Type

- Plain paper
- Special coated paper for 720dpi
- High quality glossy paper

Your EPSON Stylus Series printer can print on most types of paper. However, to get the best results it is important to match the printing mode setting to your paper type.

**Note:** Before changing the media type, change the printing mode.

The printing modes available for each media type are:

<b>Printing mode</b>	<b>Media type</b>
<b>Super - 720 dpi</b>	Plain paper Special coated paper - 720 dpi Special coated paper - 360 dpi High quality glossy paper
<b>Best - 360 dpi</b>	Plain paper Special coated paper - 360 dpi Transparency film
<b>Draft - 180 dpi</b>	Plain paper

The available media types are:



### Plain paper

Select this option for most types of documents. You should also select this option if your paper is not a special coated paper, high-quality glossy paper, or transparency.



### Special coated paper - 360 dpi

To obtain good print quality, you can use special coated paper for ink jet printers. Use EPSON *Special coated paper for 360 dpi printing* and select this option. This option is also recommended for other coated paper for ink jet printers.



### Special coated paper - 720 dpi

To get the highest print quality, use EPSON *Special coated paper for 720 dpi printing* and select this option. This setting should also be used when printing on the front (coated) side of EPSON *Special coated index card for 720 dpi printing*. If you want to print on the back of an index card, select **Plain paper** as the media type.



### Transparency

To print overhead transparencies, use EPSON *Transparency* and select this option and the **Best - 360 dpi** printing mode.

**Note:** Use EPSON Transparencies only. No other type of transparency is supported.



### High quality glossy paper

Select this option and Super - 720 dpi printing mode and use EPSON *High quality glossy paper* for output at 720 dpi.

**Note:** Use only EPSON *High quality glossy paper*. No other type of glossy paper is supported.

## **See Also**

[Printing Modes](#)

[Print Options](#)

[Ordering Supplies](#)



## Print Options

<input type="checkbox"/>	MicroWeave
<input checked="" type="checkbox"/>	High Speed

Your print quality settings are:



### MicroWeave

<input checked="" type="checkbox"/>	MicroWeave
-------------------------------------	------------

When **MicroWeave** is selected, your printer generates superior output because your graphics data is re-ordered and printed in finer increments. This technology reduces the possibility of banding -- uniform lines in graphics.

For best results, use EPSON's special coated paper, transparency, or high-quality glossy paper with MicroWeave.

**Note:** **MicroWeave** is recommended for printing in color. You can select **MicroWeave** for Monochrome printing, but the printing time is significantly longer.



### High speed

<input checked="" type="checkbox"/>	High Speed
-------------------------------------	------------

When you select this option, printing is performed in both directions: as the print head moves from left to right and right to left. Bidirectional printing is faster and is recommended for most printing.

### See Also

[Printing Modes](#)


[Media Type](#)



## Changing Image Settings

To display the menu where you can change the printer's image settings:



Click on  You see:



Use this menu to modify a document's color (or grayscale) settings.

If you are not familiar with color printing processes and you simply want to print high-quality color (or black-and-white), do not change the original settings. However, if your software does not allow you to make adjustments and you want to modify your images, experiment with the settings until you achieve satisfactory results.

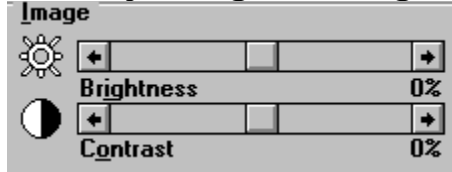
Use the **Image Settings** menu to:

Adjust the Image Settings

Choose the Color Matching Type



## Adjusting the Image Settings



The Image settings include **Brightness** and **Contrast**.



### Brightness

The **Brightness** option changes the lightness or darkness of graphics. You can adjust the brightness in a range of -50% to +50%.

**To adjust the brightness:**



Drag the scroll bar to the right or left with your mouse.



### Contrast

The **Contrast** option changes the ratio between the brightest and the darkest parts of graphics. You can adjust the contrast in a range of -50% to +50%.

**To adjust the contrast:**



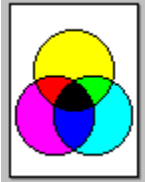
Drag the scroll bar to the right or left with your mouse.

**Note:** You can confirm the effect of the setting by looking at the image on the right side of the Image Settings Menu window.

## See Also

[Choosing the Color Matching Type](#)





## Choosing the Color Matching Type

Off  
 Vivid  
 Photo-realistic  
 Standard

This feature provides you with three image color matching schemes that give you more control over the color in your printouts. **Color Matching** can also be turned off.

When **Automatic** is selected in the Document Type menu, the printer driver analyzes the data for each page of your document and automatically adjusts the **Color Matching** settings.

**Note:** You may need to experiment with different settings until you get the output you want. Also, **Color Matching** is not available when **Monochrome** is selected in the Document Type menu.

The following settings are available:



Off

Off

Turns off color matching.



Vivid

Vivid

Intensifies the colors and lightens the midtones and highlights of an image. Use this setting for presentation graphics, such as charts and graphics.



Photo-realistic

Photo-realistic

Increases the contrast in an image. Use this setting for color photographs.



Standard

Standard

Provides output that closely matches the original screen colors. Use this setting for illustrations.

### See Also

[Adjusting the Image Settings](#)

[Document Type Menu](#)

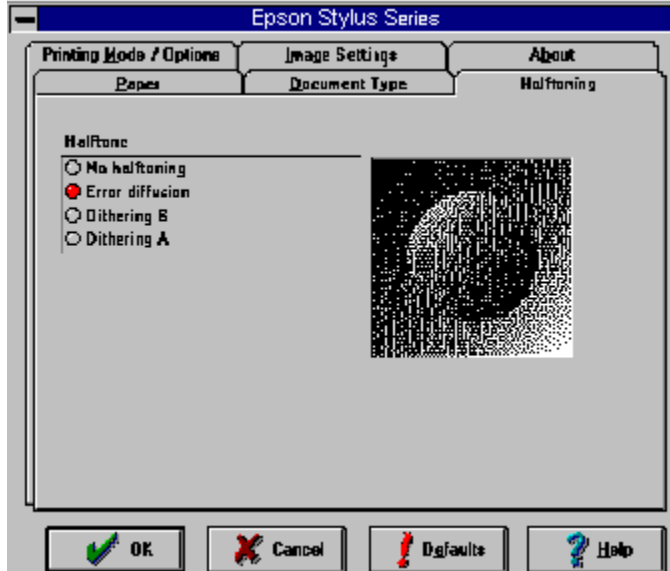


## Choosing a Halftoning Method

To display the menu that lets you choose from various halftoning methods:



You see:



Halftoning Options

## Halftoning Options

To create an image on your printer that looks like the image on your screen or the scanned original, the printer driver processes the image by using halftoning. Halftoning is the same process used in the printing of magazines and newspapers.

- No halftoning
- Error diffusion
- Dithering B
- Dithering A

The halftoning method you choose depends on the type of image you are printing. An image showing the currently selected halftoning effect displays in the Windows menu.

To take advantage of EPSON's intelligent color correction feature, select the **Automatic** option from the [Document Type menu](#). When **Automatic** is selected, the printer driver analyzes the data for each page of your document and automatically adjusts the settings.

**Note:** Results obtained when printing graphics are directly affected by the halftoning method you choose. You may need to experiment with different settings until you get the output you want.

The options are:



No halftoning

Use this setting for text and no graphics. This is the fastest setting.



Error diffusion

Use this setting for photographic images or equivalent drawings. This is the highest quality setting.



Dithering B

Use this setting for graphic images with significant detail but limited shading.



Dithering A

Use this setting for graphic images with limited detail and shading.

**Note:** When [media type](#) is set to **Special coated paper - 720 dpi** and the printing mode is **Super - 720 dpi**, the Dithering A and B halftone options are not selectable.

**Caution:**

Use the halftoning methods in this driver rather than the dithering options in your software.

### See Also

[Document Type menu](#)

[Media Type](#)



## Contents



[Quick Guide to Using Help](#)



[About the EPSON Stylus Series Printing System](#)



[Driver Menus](#)



[Printing Procedures](#)



[Spool Manager, Despooler, and Status Monitor](#)

[Using the Spool Manager](#)

[Using the Despooler and Status Monitor](#)



[Tips for Printing in Color](#)

[Routine Maintenance](#)



[Troubleshooting](#)



[Copyright and Trademark Information](#)



## Using the Spool Manager

When you print your document, the Epson Stylus Series printer driver uses a print Spool Manager to send the data to your computer's hard disk and then to the printer. Then it uses a Despooler to print the data.

When the EPSON Stylus Series printing system releases your application software from printing, a journal file is created in the default spool directory. When a journal file is created, the EPSON Spool Manager assigns it to the appropriate queue. When the journal file comes to the front of the queue, it is submitted to the EPSON Despooler and replayed to the target printer.

The Spool Manager allows comprehensive control over the EPSON Despooler, print queues, print journal files and also allows you to enable remote network printing.

[The EPSON Spool Manager Window.](#)

[The Queue Menu.](#)

[The Document Menu.](#)

[The View Menu.](#)

[The Options Menu.](#)

[The Help Menu.](#)

## Default Spool Directory

The default directory that journal files are sent to is normally specified by the DOS environment string `SET TEMP=` in your CONFIG.SYS file.

You can change the default directory by selecting the **Default Spool Directory** item from the Options menu in the EPSON Spool Manager.

## The EPSON Spool Manager Window

The Spool Manager window shows the list of EPSON Stylus printer queues and journals currently printing or waiting for printing.

### Queues

Queues shown in normal intensity represent printers that are supported by the EPSON Stylus Series printing system. Queues shown in low intensity are supported by other (conventional) Windows printer drivers.

You can change the options of an EPSON Stylus print queue by double-clicking on it or by clicking once to select it and then choosing an option from the Queue menu

### Journals

Journal files are shown in their relevant queue. You can stop journal files printing, place journals on hold, delete a journal or re-queue a journal for later printing by double-clicking a journal entry in the queue.

Alternatively you can click a journal entry and then choose an option from the Document menu

## Queues

A queue is a list of journal files currently printing or waiting to print. Queues are always associated with a print device and can be local to the workstation or remote (directed across a network to another workstation).

An icon representing your print device is displayed against the queue. When you hold a queue, journal files will not be printed but will wait until the queue is released. The EPSON Spool Manager places a wait symbol against the icon when the queue is on hold.



## The Queue Menu

The Queue menu allows you to place EPSON Stylus print queues on hold, release them to allow journal files to be printed and identify queues as local or remote (network printing). The following options are available:

### Holding or Releasing a Queue

#### To hold or release a queue:

- 1 Click the queue.
- 2 Select the Hold option from the Queue menu.

A check mark beside the Hold option indicates the queue is currently on hold. Additionally, when a queue is on hold, the spool manager places a wait symbol beside the printer icon associated with the queue, and journal files are not submitted for printing.

### Using The Windows Print Manager

The EPSON Despooler normally prints directly to the printer.

#### To schedule print jobs through the conventional Windows Print Manager:

- 1 Click the queue.
- 2 Either double-click the queue or select the **Setup** option from the Queue menu.
- 3 Select the Use Print Manger for this port option and choose the OK button.

### Network Printing

The EPSON Stylus Series printing system allows you to send journal files from your workstation (Host) to a shared directory on a network server. These can then be printed by another workstation (Remote) set up to run the EPSON Spool Manager and associated EPSON Stylus printer driver(s). You can do this as follows:

#### To set up the Host:

- 1 Click on the queue.
- 2 Either double-click the queue or select the **Setup** option from the Queue menu.
- 3 Select the Spool to remote printer option.
- 4 Click the Browse button and select the spool directory on the remote server which should receive journal files from the spool manager.

#### To set up a Remote workstation:

- 1 Install the EPSON Stylus Series printing system and the required printer driver(s) using the Windows Control Panel.
- 2 Run the EPSON Spool Manager by executing `EPSPLMGR.EXE` from the `WINDOWS\SYSTEM` directory.

- 3 Either double-click the queue or select the **Setup** option from the Queue menu.
- 4 Select the Remote Despool tab and click the Printing from remote queues option.
- 5 Click the Browse button and select the spool directory on the remote server which will hold journal files from host workstations.
- 6 Journals will be identified by the EPSON Spool Manager and submitted for printing.

**Note:** This feature is quite different from the traditional remote-printer spooling provided by most network operating systems. Use your network to redirect the printer `LPTx:` ports in the usual way to take advantage of that feature. You may also need to enable the Windows Print Manager as described above on some network operating systems when port re-direction is utilized.

## The Document Menu

The Document menu allows you to control journal files in your EPSON Stylus print queue. Journals can be held, re-queued for printing later, deleted or kept for subsequent re-printing.

To select options appropriate to a journal file, either double-click it or select options from the Document menu.

## The View Menu

The View menu allows you to limit the amount of information that the EPSON Spool Manager gives you. In addition, you can control the display of the EPSON Despooler pop-up. When options in the View menu are selected, the EPSON Spool Manager places a check mark beside them.

If the Show Despool Popup is cleared (no check mark is beside it), the EPSON Despooler window will not appear when journal files are submitted for printing. It will appear, however, if an error is reported by the printer.

## The Options Menu

The **Options** menu controls the [default spool directory](#), timer and font selections as follows:

### Default Spool Directory

Choose this option from the **Options** menu to override the default TEMP directory setting. Journal files will be sent to this directory instead. This option is equivalent to the Spool Directory setting in the [Queue Menu Setup](#) option except that it applies to all queues.

### Timers

#### Update Timer

The Update Timer tells the EPSON Spool Manager how often to refresh the information displayed in the [EPSON Spool Manager window](#).

#### Remote Timer

The Remote Timer tells a remote EPSON Spool Manager how often to look for new journal files in a network directory.

See the [Queue Menu](#) for more details about network printing.

### Font

This option allows you to set the default font that the EPSON Spool Manager uses for displaying information in the spool manager window.

## **The Help Menu**

The Help menu provides copyright, trademark and version information about the EPSON Spool Manager through the About option.

### **See Also**

[About the Epson Stylus Series Printing System](#)



## Using the Despooler and Status Monitor

When a journal file is processed by the EPSON Spool Manager, it is submitted to the EPSON Despooler. The EPSON Despooler shows the progress of the current print job and identifies printer status information such as paper out, printer off line etc.

**Note:** If you have cleared (no check mark is beside it) the **Show Despooler Popup** option in the View Menu of the EPSON Spool Manager, then the EPSON Despooler pop-up will only appear if a printer status error occurs.

### Journal Control

You can use the EPSON Despooler to control journal files similar to the Document option(s) in the EPSON Spool Manager. There are three buttons that allow full journal print control:



**Stop** -- Cancels printing.



**Pause** -- Pauses printing until you press it again



**Rewind** -- Restarts printing from the current page

### Printer Status Under Windows 3.1x



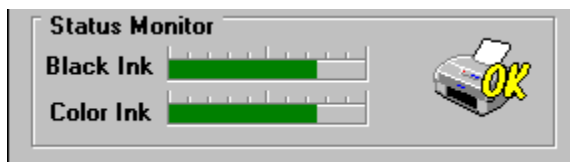
The progress of the current page is shown by the image of a document in the upper right of the despooler window. Each page of the document is divided into one or more horizontal bands for processing. Once a band is complete, that data is sent to the printer and the despooler starts to process the next band. If your document is very simple, there may be only one band per page. If your document is complex (such as a graphic image) or your computer has little free memory, there will be many bands.

Status messages and symbols representing error conditions are displayed on the image of your printer in the despooler window.

When you correct a problem with the printer the despooler senses this and continues with the print job. If a serious error occurs, such as printer power failure, it is suggested that you re-queue the journal and print it again.

### Printer Status Under Windows 95

If you are using Windows 95 and your computer system is equipped with a bi-directional parallel port, the lower portion of the Despooler window displays the following Status Monitor:



The Black Ink and Color Ink level indicators operate similar to a fuel level indicator in an automobile. As

you use up ink, the indicator drops in 25% (quarter) increments. When the level drops to 20% full, the indicator turns yellow. When the level drops to 10% or less, the indicator is red.

The printer image in the Status Monitor changes according to the printer's status. The images convey the following messages:



**Checking Printer** - the Status Monitor is polling the printer for information.



**Time Out** - the Status Monitor did not get the printer's reply within a certain period of time due to heavy processing activity. When you re-queue a print job, the Status Monitor will poll again.



**Inquiry Received** - The printer responded with the current ink level values.



**Printing** - The printer is currently printing a journal file.



**Low Ink** - This is a warning that one or both of the ink cartridges is low on ink.

**Note:** This feature is not available for printers connected through a network.

## About and Help

The **About** button provides version and trademark information about the EPSON Despooler. The **Help** button brings you directly to this Help Window.

## See Also

[Using the Spool Manager](#)





## Printer Status

The EPSON Despooler pops up on standard errors, such as Paper out and Printer off line, when these errors are reported by your EPSON Stylus printer. Try taking the printer off line or removing paper from the input tray while printing to demonstrate this capability.

## **Bi-directional Parallel Port**

A regular Centronics parallel port only allows the flow of data in one direction - from your computer to your printer. A bi-directional port allows data to flow both ways. This means that your EPSON Stylus printer can send special information back to your computer. Refer to your computer's user guide (or ask your dealer) to see if it is equipped with a bi-directional port.

Most modern computer systems come with a bi-directional (PS/2 type) parallel port that meet the IEEE 1284 Specification. If your system is not equipped with this type of port, you can usually purchase a bi-directional parallel interface card from your local computer dealer for a very low cost.



## Contents



[Quick Guide to Using Help](#)



[About the EPSON Stylus Series Printing System](#)



[Driver Menus](#)



[Printing Procedures](#)



[Spool Manager, Despooler, and Status Monitor](#)



[Tips for Printing in Color](#)

[Color Printing Basics](#)

[Choosing Required Settings](#)

[Choosing the Printing Mode](#)

[Customizing Printer Settings](#)

[Routine Maintenance](#)



[Troubleshooting](#)



[Copyright and Trademark Information](#)



## Color Printing Basics

Printing in color is a complex process that depends on the combination of your source document (scanned image, software generated graph, photograph, etc.), your printer driver settings, and the type of media you are printing on (plain paper, coated paper, transparency film, etc.).

The Epson Stylus Series printing system has several automatic features designed to analyze the type of document you are printing and make the task of color printing easier for you. However, there are some printer driver settings that you may need to change from time to time to get the kind of color printing results you want. Also, there are some required settings. For example, you must tell the printing system whether you are using plain paper or special coated paper.

There are a few things that you should keep in mind about printing with color in order to get the results you expect.

### Input Settings

You can make adjustments in the Window's software you use to create your documents.

With scanned documents, you can adjust scanner settings.

With digital cameras, you can adjust camera settings.

### Driver Settings

You can make adjustments through one of your printer driver's Menus.

For highest quality printing, always turn on MicroWeave and turn off **High Speed** in the Printing Mode Menu.

### Media Type

You can improve quality by using the right paper or transparency film. To order high quality coated papers and film, see Ordering Supplies.



## Choosing Required Settings

Choose the following driver settings to match your document requirements:

Paper size      The size of the paper loaded in the printer.

Orientation      The direction of printing on the document.

Ink              Monochrome (black) or color (CMYK) ink.

Printing Mode      Super - 720 dpi, Best - 360 dpi, or Draft - 180 dpi

Media type      The type of paper loaded in the printer.

### See Also

[Choosing the Printing Mode](#)



Cyan - Magenta - Yellow - Black.

The three primary process (subtractive) colors plus black.



## Choosing the Printing Mode

Use the following guide tables to help you choose the most appropriate printing mode for your documents.

**Note:** When printing speed is important, remember that the following settings take increasingly more time for your document to print:

**Fast**



**Slow**

Monochrome text printing

MicroWeave set to on with Monochrome

Color (CMYK)

Diffused halftone methods for complex printing

Higher resolution

### Text and Simple Graphics

<i>Desired Results</i>	<i>Minimum Media Setting</i>	<i>Suggested Settings</i>
<b>Sharp black text</b>	Plain paper	Best - 360 <u>dpi</u> Monochrome Text
<b>Sharp black or color text and basic non-gradated graphics</b>	Plain paper	Best - 360 dpi Color ( <u>CMYK</u> ) Presentation
<b>Low-detail pencil drawings</b>	Plain paper	Best - 360 dpi Monochrome Drawing

### Grayscale Graphics

<i>Desired Results</i>	<i>Minimum Media Setting</i>	<i>Suggested Settings</i>
<b>Clear, low-detail images</b>	Plain paper	Best - 360 <u>dpi</u> Monochrome Presentation
<b>High-quality, detailed diagrams or drawings</b>	Plain paper	Best - 360 dpi Monochrome Drawing

**High-quality,  
photographic images  
or similar drawings**

Special coated paper  
360 dpi

Best - 360 dpi  
Monochrome  
Photograph

### **Complex Color Images**

**Sharp, color  
graphics or  
scanned images**

Special coated paper  
360 dpi

Best - 360 dpi  
Color (CMYK)  
Photograph

**Highest-quality,  
color graphics or  
scanned photographic  
images**

Special coated paper  
720 dpi

Super - 720 dpi  
Color (CMYK)  
Photograph

**Highest-quality,  
color graphics or  
scanned images for  
overhead presentations**

Transparency film

Best - 360 dpi  
Color (CMYK)  
Photograph

### **See Also**

[Choosing Required Settings](#)

[Driver Menus](#)

[Troubleshooting](#)

[Ordering Supplies](#)





## Customizing Printer Settings

You can use your EPSON Stylus printer's control panel to perform special printing functions, select customized settings, and change the Default Setting Mode. The control panel lights also provide a visual indication of the printer's status.

**Note:** Since all printer settings can be controlled from your Windows application software, you do not often need to use the control panel. In fact, your application usually overrides any control panel selections that you may make. Normally, you need it to do only the following:

Turn on economy or condensed mode

Clean the black or color print heads

Replace the ink cartridges

Pause the printer temporarily

Reset the printer.

**Note:** Direct customization with the control panel can be useful when you are using older DOS applications that do not support your EPSON Stylus printer's features.

### Control Panel Lights

The control panel lights indicate the following printer status:

<b>Power</b>	On when the printer is on. On some printers, it flashes when the printer is turned on or off.
<b>Data</b>	Flashes when data is being received by the printer. On when data remains in the printer's memory or when printing a self test or demonstration page.
<b>Ink Out</b>	Flashes when the specified ink cartridge is low on ink. On when the cartridge is empty or not installed. The printer will not work if this light is on.
<b>Paper Out</b>	On when the printer runs out of paper. Flashes rapidly if there is a paper jam.
<b>Economy</b>	On when economy printing mode is selected. In economy mode the printer uses less ink by printing fewer dots per character. Use this mode for rough drafts of text only.
<b>Condensed</b>	On when condensed mode is selected. In this mode, the printer prints selected fonts at 60% of their width so that more characters can fit on a page.
<b>Pause</b>	On when printing is paused and flashes when you clean the print heads or replace ink cartridges. The <b>Pause</b> light also flashes when an error occurs. Never turn off the printer when the <b>Pause</b> light is flashing.

**Note:** Your particular EPSON Stylus printer may have additional lights. Refer to your Reference Guide for details.

### Control Panel Buttons

The control panel buttons can be used singly or in combinations to perform the following functions:

**Alt** Used in combination with other buttons to reset the printer, clean the print heads, or

replace the ink cartridges. See the combinations listed below.

- Pause** Stops printing temporarily. Press it again to resume printing.
- Economy Condensed** Selects Economy or Condensed mode as indicated by the lights. Use this button only if you print from a DOS application.
- Load/Eject** Loads or ejects a sheet of paper. The printer normally loads and ejects paper automatically.
- Alt + Pause** Clears the printer's buffer and resets the printer settings to their factory defaults.
- Alt + Economy** Starts the black print head cleaning cycle. Cleaning the print head uses ink, so only perform a cleaning cycle if print quality declines.
- Alt + Load/Eject** Starts the color print head cleaning cycle. Cleaning the print head uses ink, so only perform a cleaning cycle if print quality declines.

**Note:** The following button combinations require you to turn the printer off first.

- Alt + Power** Prints a demonstration page of the printer's fonts and colors. To exit this mode, press the **Pause** button and turn off the printer.
- Load + Power** Checks the paper length and performs a self test.
- Economy + Power** Enters the printer's Default Setting Mode and prints out instructions (see below). To exit this mode, press the **Pause** button and turn off the printer.

**Note:** Your particular EPSON Stylus printer may have different buttons. Refer to your Reference Guide for details.

## Using the Default Setting Mode

Additional printer functions are available through the Default Setting Mode. Because the printer's factory defaults are designed to meet the needs of almost all users, you rarely need to change the printer functions listed below.

### To turn on Default Setting Mode, print instructions, and make changes:

1. Turn off the printer.
2. Hold down the **Economy** button while you turn the printer back on.
3. Follow the printed instructions to change the default settings by pressing the buttons on the control panel.
4. When you are finished, press the **Pause** button and turn off the printer.

## Default Setting Options

You can select the following options:

**Print direction.** Specifies how the print head moves across the page. The options are Uni-D, Bi-D, and Auto (default). When Uni-D is on, the print head prints in only one direction to provide the most precise alignment for graphics and text. In Bi-D printing, the head prints in both directions, making

printing faster. When Auto is selected, the printer switches automatically between Uni-D and Bi-D as necessary, depending on the type of journal file.

Interface Mode. Determines from which interface the printer receives data. The default setting, Auto, allows the printer to automatically switch as needed between the parallel and serial interfaces. However, if you experience communication problems, you might want to set the mode to either parallel or serial.

Auto Interface Wait Time. Sets the time period for the printer to wait for data from the current interface. You can select a 10-second (default) or 30-second timeout.

Character Table. Selects the set of characters and symbols that can be printed. The default is the DOS Italic USA character table. If you commonly use a language containing accents or other special symbols from a DOS application, you can change the character set.

Loading Position. Determines the top margin by defining how close to the paper edge the first line can print. The loading position can be 3 mm (default) or 8.5 mm. Normally you should use your software to adjust your top margin.

Network Interface Mode. If you want to use the printer in a network and share it among multiple computers, set this feature to on. When this feature is set to on, data may be present in the printer's buffer even though the printer is not printing.

Auto Line Feed. When the auto line feed is on, each carriage return (CR) code is accompanied by a line feed (LF) code. If your printed text is unexpectedly double-spaced, set this feature to off. If text lines print on top of each other, set it to on.

## **Buffer**

A memory area in your printer that stores incoming data until it is ready to be printed.

## **ESC/P2**

The second revision of the EPSON industry standard printer control language. The main function of the Stylus Series printer driver is to translate Windows printer functions to the ESC/P2 control language - the language that the printer understands.



## Contents



[Quick Guide to Using Help](#)



[About the EPSON Stylus Series Printing System](#)



[Driver Menus](#)



[Printing Procedures](#)



[Spool Manager, Despooler, and Status Monitor](#)



[Tips for Printing in Color](#)

### [Routine Maintenance](#)



[Replacing an Ink Cartridge](#)



[Cleaning the Print Heads](#)

[Cleaning the Printer](#)

[Transporting the Printer](#)



[Ordering Supplies](#)



[Troubleshooting](#)



[Copyright and Trademark Information](#)



## Replacing an Ink Cartridge

### Try This First

When printed images appear faint, have many gaps, or nothing prints, either wait until the document finishes printing or press the **Pause** button and then the **Load/Eject** button on the printer's control panel to eject the page. Clean one or both of the print heads. If up to three cleanings do not improve print quality, replace one or both ink cartridges.

If the colors you print are very different from what you expect, print a self test as described in your setting up guide. If one or more of the colors do not appear in the self test, replace one or both ink cartridges.

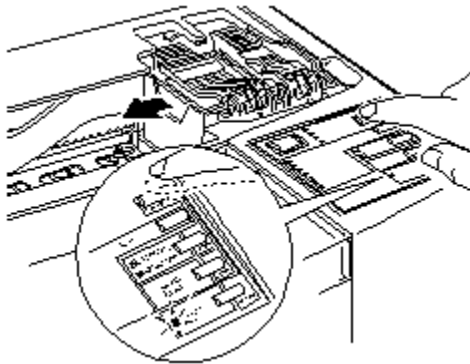
Use the following genuine EPSON ink cartridges (see [Ordering Supplies](#)). Other products may cause damage to your printer not covered by EPSON's warranties.

<b>Black ink cartridge</b>	<b>S020034</b>
<b>Color ink cartridge</b>	<b>S020066</b>

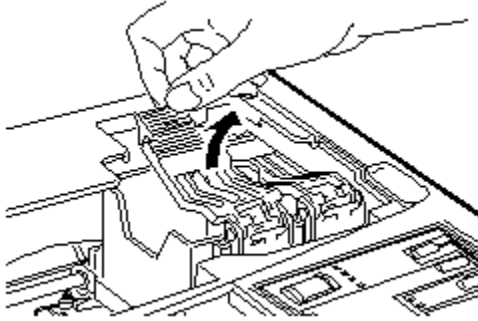
### Replacing the Ink Cartridge

#### To replace an ink cartridge:

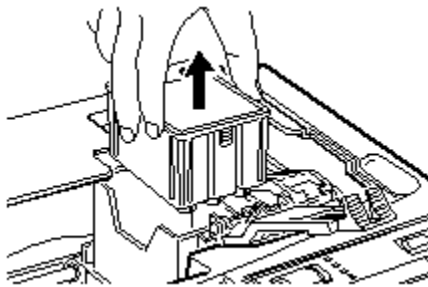
1. Make sure the printer is on.
2. Open the printer cover.
3. Press the **Pause** button to turn the **Pause** indicator off.
4. Hold down the **Alt** button for about five seconds until the print head moves left slightly to the cartridge install position. The **Pause** light flashes when the carriage is in this position.



5. Lift up the clamp that holds the cartridge you want to replace as far as it will go. When you do, the cartridge will rise partly out of the carriage.



6. Lift the cartridge out of the printer and dispose of it properly. Do not take the used cartridge apart or try to refill it.



**Caution:**

If ink gets on your hands, wash them thoroughly with soap and water. If ink gets into your eyes, flush them immediately with water.

**Caution:**

Leave the old cartridge installed in the printer until you are ready to replace it with a new one. Attempting to print without a cartridge installed can damage the printer.

**Caution:**

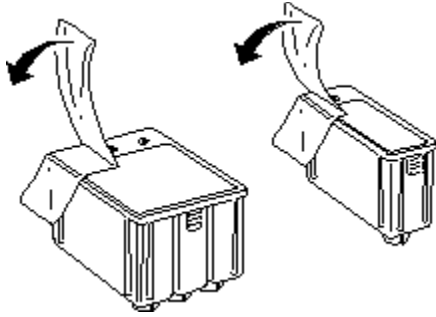
Use genuine EPSON ink cartridges and do not refill. Other products may cause damage to your printer not covered by EPSON's warranties.

**Note:** When replacing the ink cartridge, make sure no paper is in the paper path. Paper loaded in the printer is ejected automatically when you replace the cartridge.

**Note:** The carriage automatically returns to the home position (far right) after 60 seconds if you do not remove an ink cartridge during that time.

7. Open the package containing the ink cartridge and remove the cartridge from its protective bag. Next, remove the tape seal from the cartridge. Your packaging may differ slightly from that shown in the illustration below.

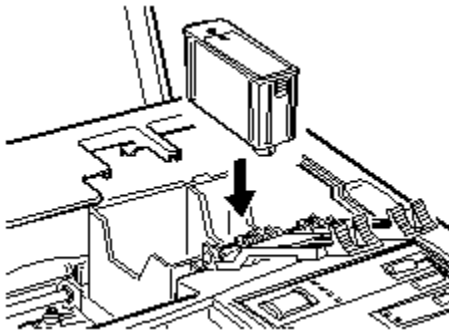




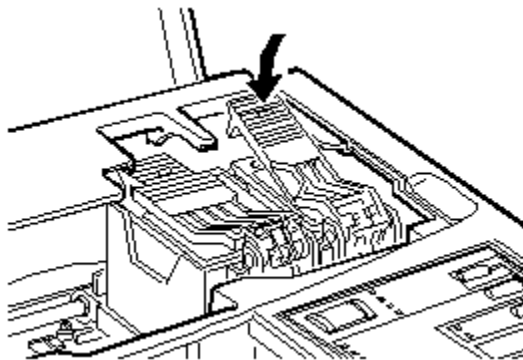
**Caution:**

You must remove the tape seal from the cartridge. Leaving the tape on when you install the cartridge will permanently damage it.

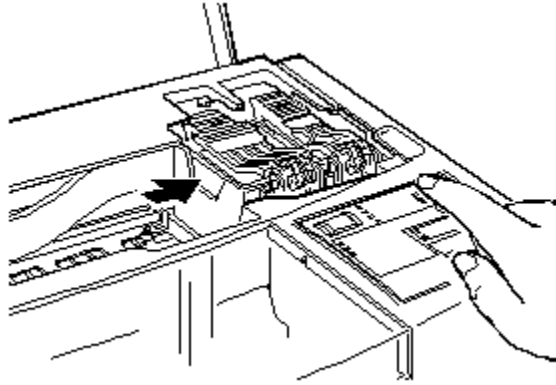
8. Lower the ink cartridge into the cartridge holder with the label on the cartridge face up and the arrow on the cartridge pointing to the rear of the printer. The larger (color) cartridge goes on the left, the black ink cartridge on the right.



9. Press the ink cartridge clamp down toward the back of the printer until it locks in place.



10. Press the **Alt** button again. The printer charges ink in the system and moves the print head to its home (far right) position. This operation takes about one minute to complete.



**Caution:**

The **Pause** indicator continues to flash while the printer performs the ink charging operation. Never turn off the printer while the **Pause** indicator is flashing. Doing so can result in incomplete charging of printer ink.

11. Close the printer cover.

**See Also**

[Cleaning the Print Heads](#)

[Troubleshooting](#)



## Cleaning the Print Heads

If print quality diminishes, use the printer's built-in print head cleaning cycle to ensure that the nozzles are delivering ink properly. You can clean the color and black print heads separately.

To avoid wasting ink, clean the print head only if the print quality declines.

### To clean the print heads:

1. Make sure the printer is turned on and the **Pause** light is on. If the **Pause** light is not on, press the **Pause** button to pause the printer.

**Note:** When cleaning a print head, make sure no paper is in the paper path. Paper loaded in the printer is ejected automatically when you clean the print head.

2. Hold down the **Alt** button and press **Economy/Condensed** to clean the black print head.

Hold down the **Alt** button and press **Load/Eject** to clean the color print head.

**Note:** The cleaning cycle takes about one minute. The **Pause** light flashes throughout the cycle and then stays on when the cleaning cycle is finished. Also, you cannot perform both color and black print head cleaning operations at the same time.

3. Press the **Pause** button to resume printing.

**Note:** If the print quality does not improve after you perform cleaning three times, replace the ink cartridge.

### See Also

Replacing an Ink Cartridge

Troubleshooting



## Cleaning the Printer

To keep your printer operating at its best, you should clean it thoroughly several times a year.

### To clean your EPSON Stylus printer:

1. Make sure the printer is turned off. Then unplug the power cord.
2. Remove any paper from the paper tray.
3. Use a soft brush to carefully brush away all dust and dirt.
4. If the outer case or the inside of the paper tray is dirty, clean it with a soft, clean cloth dampened with mild detergent. Keep the printer cover closed to prevent water from getting inside.
5. If the inside of the printer accidentally gets soiled with ink, wipe it off with a damp cloth.

**Warning:**

Be careful not to touch the gears inside the printer.

**Caution:**

Never use alcohols or thinners to clean the printer; these chemicals can damage the components as well as the case.

**Caution:**

Be careful not to get water on the printer mechanism or electronic components.

**Caution:**

Do not use a hard or abrasive brush.

**Caution:**

Do not spray the inside of the printer with lubricants; unsuitable oils can damage the mechanism. Contact your dealer or a qualified service person if lubrication is needed.

### See Also

[Troubleshooting](#)



## Transporting the Printer

If you need to transport your printer some distance, carefully repack it using the original box and packing materials as follows:

### To transport your EPSON Stylus printer:

1. Open the printer cover and make sure that the print head is capped in the far right position. If the print head is not capped, turn on the printer to cap it. Then turn off the printer.

**Caution:**

Leave the ink cartridges installed when you transport the printer. Removing the cartridges during transport can damage the printer.

2. Unplug the power cord from the electrical outlet; then disconnect the interface cable from the printer.
3. Remove the paper tray cover from the paper tray and remove any paper in the paper tray.
4. Remove the paper tray from the printer.
5. Attach the protective materials to the printer.
6. Repack the printer and power cord in the original box.
7. Keep the printer flat in the box during transport.
8. If the print quality is poor after transporting the printer, [clean the print heads](#).

### See Also

[Cleaning the Print Heads](#)

[Troubleshooting](#)



## **Ordering Supplies**

You can purchase supplies, parts, documentation, and accessories by calling EPSON Accessories at (800) 873-7766 (U.S. sales only).

In Canada, call (800) GO-EPSON for sales locations.



## Contents

### Quick Guide to Using Help



About the EPSON Stylus Series Printing System



Driver Menus



Printing Procedures



Spool Manager, Despooler, and Status Monitor



Tips for Printing in Color

### Routine Maintenance

### Troubleshooting



Getting the Best Print Quality



Print Quality Problems



Problems with Printing



Paper Handling Problems



Copyright and Trademark Information



## Getting the Best Print Quality

If print quality is not what you expect, first try the items below a step at a time until print quality improves. If you need further information, see [Print Quality Problems](#).

### If images or text are not clear:

1. Try using a higher-quality paper.
2. Make sure the printer driver settings are correct.
3. Make sure the printer driver [Media Type](#) setting matches the paper loaded in the printer.
4. For color or complex grayscale graphics, turn on [MicroWeave](#) and turn off High Speed in the Printing Modes Menu.
5. For scanned or digital camera images, check the scanner settings.

### If the black print is faint or dots are missing:

1. Make sure you selected **Monochrome** in the [Document Type Menu](#).
2. Perform a black [print head cleaning](#), then print a self test by holding down the **Load/Eject** button and then pressing the **Operate** button.
3. If the self test does not print out clearly, [replace the black ink cartridge](#).

### If colors are faint or do not appear at all:

1. Make sure you selected **Color** in the [Document Type Menu](#).
2. Make sure you did NOT select No halftoning in the [Halftoning Menu](#).
3. Perform a color [print head cleaning](#), then print a self test by holding down the **Load/Eject** button and then pressing the **Operate** button.
3. If the self test does not print out clearly or colors are missing, [replace the color ink cartridge](#).

## See Also

[Print Quality Problems](#)





## Print Quality Problems

The topics in this Help window describe problems you might be having with print quality.

- **Color dots are missing in printed characters or graphics. The printed color image is light or faint.**

The print head nozzles may need cleaning. See [Cleaning the Print Heads](#).

- **Black dots are missing in printed characters or graphics. The printed black image is light or faint.**

The print head nozzles may need cleaning. See [Cleaning the Print Heads](#).

- **Dots are missing in printed characters or graphics.**

Set the Network interface mode to on in the default-settings mode.

### See Also

[Getting the Best Print Quality](#)

[Problems with Printing](#)



## Problems with Printing

The topics in this Help window describe problems you might be having with the printer.

- **The Data and Pause lights flash and nothing prints.**

Turn off the printer. After a few seconds turn it back on again and try printing again. If the error is not corrected, contact your dealer or an authorized service person.

- **Printing stops and the Data and Pause lights flash.**

A carriage error occurred. Turn off the printer. After a few seconds turn it back on again and try printing again. If the error is not corrected, contact your dealer or an authorized service person.

- **Printing has stopped and the Pause light is on.**

Printing has been temporarily suspended. Press the **Pause** button to continue.

### See Also

[Getting the Best Print Quality](#)

[Printing Quality Problems](#)



## Paper Handling Problems

The topics in this Help window describe problems you might be having with paper handling.



### **The printer does not print; the Paper Out light is on.**

No paper is loaded in the printer. Load paper in the sheet feeder; then press the **Pause** button to turn off the **Pause** light.



### **The printer loads more than one sheet at a time.**

The paper may be too thin. Use a thicker type of plain paper.



### **Ejected paper is wrinkled.**

The paper may be too thin or damp. Do not store your paper in a damp or humid environment. Store paper in its original packaging.

## **See Also**

[Getting the Best Print Quality](#)

[Printing Quality Problems](#)



**Close**

- A -

About

Additive colors

About Menu

- B -

Best - 360 dpi

Brightness

Bidirectional printing

- C -

Cancel button

Color matching options

CMYK

Contrast

Collate copies

Copies

- D -

Default Spool Directory

Dithering B

Default settings

Document Type Menu

Defaults button

Document Type options

Despooler

Document Menu (Spooler)

Diffusion

dpi

Dithering

Draft - 180 dpi

Dithering A

Driver

- E -

EPSON Stylus printing system

EPSON Stylus Series Printer Driver

Error diffusion

- F -

Font Menu (Spooler)

- G -

GDIHS10009

- H -

Halftoning

High quality paper

Halftoning Menu

High Speed option

Help button

Holding (Queue)

- I -

Image Settings Menu

Ink jet

Ink cartridge

Ink options

- J -

Journal File

Journals

- L -

Landscape

- M -

Media

MicroWeave

Media Type options

- N -

Network printing

No Halftoning option

- O -

Ok button

Orientation

Options Menu (Spooler)

- P -

Paper size

Portrait

Paper source options

Printer driver

Paper Menu

Printing Mode/Options Menu

- Q -

Queue(s)

Queue Menu (Spooler)

- R -

Release time

Reverse page order

Releasing a queue

- S -

Special coated paper - 360 dpi

Stylus Printing System

Spool Manager

Stylus Series Printer Driver

Standard color matching

Status Monitor

Super - 720 dpi

- T -

Timers option (Spooler)

Transparency film

- V -

View Menu (Spooler)

Vivid color matching

- W -

Windows GDI

WYSIWYG

## **About**

There are several menus and windows in the Stylus printing system that give you information about the EPSON printer driver. These areas are labeled with "About".

## **About Menu**

The About Menu displays copyright, trademark, and printer driver version information.



## **Additive colors**

Colors that are produced by adding together the varying intensities of three colors: red, green, and blue.

## **Best - 360 dpi**

A Stylus Series printing mode that creates output at medium speed and 360 dpi resolution. This mode is best for plain paper, special coated paper - 360 dpi, and transparency film.

You can use this mode for both monochrome and color printing.

## **Bidirectional printing**

Images are printed in both directions for faster printing. The **High Speed** printing mode uses this type of printing.

## **Brightness**

The lightness or darkness level of an image. You can adjust the brightness of a printed image from the Image Settings Menu in your printer driver.



## **Cancel button**

You press the Cancel button to exit from the printer driver without saving any changes to driver settings.

## **Collate copies**

You can elect to print from the first page to the last or in reverse page order. You can also elect to collate (sort) a multi-page document into sets. These options are available in the Paper Menu.

## **Color matching options**

There are four types of color matching options -- none, vivid, photo-realistic, and standard. You select a color matching option from the Image Settings Menu.

## **Contrast**

The amount of difference between the darkest and lightest colors in an image. The greater the difference, the higher the contrast value. You can adjust the printed image contrast from the Image Settings Menu.



## **Copies**

The number of times you want to output a document. The default value is 1.

You can enter a different value from the Paper Menu, but you should normally select multiple copies from the Print function of your application.

## **Default Settings**

A value that takes effect when the equipment is turned on, reset, or initialized.



## **Defaults Button**

You press the Defaults button from the printer driver to reset all of the factory settings.

## **Despooler**

The Despooler prints your document from the Journal files saved on your hard disk by the Spool Manager. The Despooler appears on your screen automatically when you print a document.

## **Dithering A**

A halftone printing method for graphic images with limited detail and shading.

## **Dithering B**

A halftone printing method for graphic images with significant detail but limited shading.

## Document Type Menu

A main menu in the Stylus printer driver that allows you to choose settings according to the type of document you are printing. In general, you should leave the setting as **Automatic**.

## Document Type Options

There are five options that you can select from the Document Type Menu -- Automatic, Presentation, Photograph, Drawing, and Text. In general, you should leave the setting as **Automatic**.



## **Document Menu (Spooler)**

A menu in the Spool Manager that allows you to hold files from printing, re-order them for later printing, delete them from the queue, or save them for reprinting.

## **Draft - 180 dpi**

A Stylus Series printing mode that creates output at the fastest speed and 180 dpi resolution. This mode is best for printing text on plain paper.

You can use this mode for both monochrome and color text printing.



## **EPSON Stylus Printing System**

A term used to describe the Stylus Series printer, printer driver, Spool Manager, and Despooler.

## **Error Diffusion**

A halftone printing method for photographic images or equivalent drawings. This is the highest quality setting.

## **Font Menu (Spooler)**

You can use this menu to change the Spool Manager Window font. You access this menu from the drop-down Options Menu in the Spool Manager.

## **Halftoning**

Methods of using tiny dot patterns to represent images. Halftoning provides the best picture quality, but slows down printing.

## **Halftoning Menu**

A main menu in the Stylus printer driver that allows you to choose from four halftoning methods -- No Halftoning, Error Diffusion, Dithering A, and Dithering B.



## Help Button

You press the Help button to display the Stylus printing system Help Window.



## **High Quality Paper**

Special coated paper for ink jet printers that give you the best picture quality. EPSON provides two type of special coated papers -- 360 dpi and 720 dpi. See Ordering Supplies for information.

## **High Speed Option**

An option that you can select from the Printing Modes / Options Menu that turns on bidirectional printing for faster print speed. This mode is good for drafts and low-detail drawings and graphs.

## **Holding (Queue)**

If a journal is still in the Spool Manager Queue Menu, you can place it on hold for printing later or deleting.

## **Image Settings Menu**

A main menu in the Stylus printer driver that allows you to adjust the image brightness and contrast and to choose the color matching type -- Off, Vivid, Photo-realistic, and Standard.

## **Ink Cartridge**

The plastic, replaceable ink container. The Stylus Series uses one color (CMY) cartridge and one black cartridge.

## **Ink Jet**

A method of printing in which each letter or symbol is formed by precisely spraying ink onto paper.

## **Ink Options**

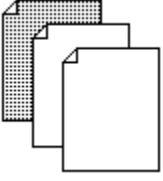
The two ink options are color (CMYK) or Monochrome (black). You can choose this option from the Document Type Menu.



## **Landscape**

The type of printing when the paper is oriented lengthwise. The opposite is Portrait.





## **Media**

Materials upon which data is printed such as envelopes, plain paper, special coated paper, and transparency film.

## **Media Type Options**

Part of the Printing Mode / Options Menu that allows you to choose the media type -- Plain paper, Special coated paper - 360 dpi, Special coated paper - 720 dpi, and Transparency film.

## **Network Printing**

Your Stylus Series printer is designed to be used as a network printer. You turn the network interface mode on or off from the printer's control panel.

You can also control network print queues from the Spool Manager Queue Menu.

## **No Halftoning Option**

This is a Halftoning Menu option that allows you to turn halftoning off. This option is used for printing drafts, simple graphics, or text.



## **Ok Button**

You press the Ok button from the printer driver menu to save all setting changes and exit the driver.

## **Options Menu (Spooler)**

The Spool Manager pull-down Options Menu allows you to change the Default Spool Directory, adjust timers, and change the default font for the Spool Manager Window.

## **Orientation**

There are two ways you can print on your media: Portrait and Landscape. Portrait images look like this screen. Landscape images are printed lengthwise. The Landscape option is ideal for printing wide spreadsheets.

## **Paper Size**

This is a required option when you plan to print on different size media. You can access the Paper size options from the Paper Menu. The default paper size is Letter (8.5 X 11.0 inches).



## **Paper Source Option**

The Stylus Series printers have an Auto Sheet Feeder. This is the default setting in the Paper Menu and you do not need to change it.

## **Paper Menu**

A main menu in the Stylus printer driver that allows you to choose Paper Size, Paper Source, paper orientation, and the number of collated copies.



## **Portrait**

Portrait images look like this screen. Images are printed left to right from the top of the paper to the bottom. The opposite is Landscape.

## **Printing Mode / Options Menu**

A main menu in the Stylus printer driver that allows you to choose Printing Mode (Super, Best, Draft), Media Type, and print speed (MicroWeave, High Speed).

## **Queue Menu (Spooler)**

A menu in the Spool Manager that allows you to place journals on hold, release them to be printed, and identify if a queue is local or remote.

## **Releasing a Queue**

You can use the Spool Manager Queue Menu to release journals you have placed on hold. The journals will then be printed.

## **Reverse Page Order**

This is an option you can select from the Paper Menu. If you check this option, your document prints from the last page first. This is useful for multi-page documents that you want to keep in normal reading order.



## **Special Coated Paper - 360 dpi**

A specially coated paper that allows the highest quality printing at 360 dpi. Use this paper in **Best - 360 dpi** mode when you are printing high-detailed images. See [Ordering Supplies](#).



## **Spool Manager**

When you print your document, the printer driver uses a print spool manager to send the data to your hard disk and then to the printer. This releases your computer and allows printing to take place in the background. The Stylus printing system then uses the Despooler to print your document.

The Spool Manager icon appears when you send data to the printer. Double-click the icon to activate the Spool Manager Window.

## **Status Monitor**

A dialog box that you see when you display the Despooler. It provides information on current printer status and ink cartridge supply levels.

## **Super - 720 dpi**

A Stylus Series printing mode that creates output at a slower speed and 720 dpi resolution. This mode is best for high quality output on special coated paper - 360 dpi or 720 dpi.

You can use this mode for both monochrome and color printing.

**Note:** Do not use this mode on transparency film.

## **Timers Option (Spooler)**

There are two types of timer associated with the Spool Manager -- the Update timer and the Remote timer.

The Update timer tells the EPSON Spool Manager how often to refresh the information displayed in the Queue Menu.

The Remote timer tells a remote EPSON Spool Manager how often to look for new journal files in a network directory.

## Transparency Film

A Stylus Series printer can print on specially prepared transparency film for use on overhead projectors. You must use only film that is designed for use with ink jet printers. See [Ordering Supplies](#).

Use the **Best - 360 dpi** mode when you print on transparency film.

## **View Menu (Spooler)**

The Spool Manager has a pull-down View Menu that allows you to limit the amount of information that the Spool Manager displays. You can also choose to keep the Despooler from appearing when you print.

