

## **Contents**

About the Spool Manager

Spool Manager



## About the Spool Manager

When you print a document, the EPSON Stylus Series printer driver converts the print job into a journal file. To quickly release your software application from the task of printing, EPSON Spool Manager sends this journal file to the default spool directory. The Spool Manager then assigns the journal file to the appropriate print queue. When the journal file reaches the front of the queue, the Spool Manager sends it to the EPSON Despooler and then to the target printer.

When it receives a journal file, the Despooler appears on your screen to show you the progress of the current journal file and to identify printer status information, such as paper out and printer off line. If you are using Windows 95, the Despooler also includes the Status Monitor, which provides more information about printer status and remaining ink.

The Spool Manager gives you control over the Despooler, print queues, and journal files. It also allows you to enable remote network printing.

The Spool Manager starts automatically when you select **Print** from your application.

**Note:** The screen displays the Despooler when a journal file is being sent to the printer. If you do not want the Despooler to appear, turn off the **Show Despool Popup** option in the Spool Managers View Menu.


### See Also

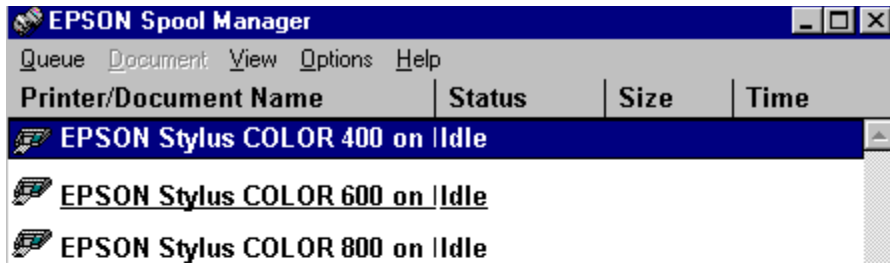
Spool Manager



## Spool Manager

To access the Spool Manager:

Double-click  from the Windows desktop or the EPSON program group icon in Windows. You see the Spool Manager Window:



The Spool Manager window displays the list of EPSON Stylus printer queues. Journal files that are currently printing or waiting to be printed appear in the assigned queue.

### Queues

Queues shown in normal text represent printers that are supported by the EPSON Stylus Series printing system. Queues shown in faint text are supported by other (conventional) Windows printer drivers.

To change the options of an EPSON Stylus print queue as described in the Queue menu Help screen, double-click the queue or click it once to select it and then choose an option from .

### Journal Files

The Spool Manager window displays journal files in their assigned queue. If you double-click a journal file, the screen displays a dialog box that contains journal file information, such as file size and status. Using this dialog you can stop printing a file, place the file on hold, delete it, or re-queue it for later printing.

Alternatively, you can click a file once to select it and then choose an option from the Document menu.

From the Spool Manager you can select:

The Queue Menu

The Document Menu

The View Menu

The Options Menu

The Help Menu

## The Queue Menu

The Spool Manager **Queue** menu allows you to place EPSON Stylus print queues on hold, release them to allow journal files to be printed, and identify queues as local or remote (network printing). These options are described below.

### Holding or Releasing a Queue

#### To hold or release a queue:

- 1 Select the queue in the Spool Manager window.
- 2 Click Queue to display the Queue drop-down menu.
- 3 Click the **Hold** option on the **Queue** menu.

A check mark next to the **Hold** option indicates the queue is currently on hold. When a queue is on hold, the Spool Manager places a wait symbol on the printer icon next to the queue and journal files in the queue are not submitted for printing.

### Using the Windows Print Manager

The EPSON Despooler normally send files directly to the printer.

#### To schedule print jobs through the conventional Windows Print Manager:

- 1 In the Spool Manager window, either double-click the queue or click the queue once and then select the **Setup** option the **Queue** menu.
- 2 Select the **Use Print Manager for this port** option and click the **OK** button.

### Network Printing

The EPSON Stylus Series printing system allows you to send journal files from your workstation (the host) to a shared directory on a network server. These files can then be printed by another (remote) workstation set up to run the EPSON Spool Manager and the associated EPSON Stylus printer driver(s). Follow the steps below to set up the host and remote workstations.

#### To set up the host:

- 1 In the Spool Manager window, either double-click or click the queue once to select it and then the queue or select the **Setup** option on the **Queue** menu.
- 2 Click the **Spool to remote printer** button.
- 3 Click the **Browse** button and select the remote server spool directory that will receive journal files from the Spool Manager.

#### To set up a remote workstation:

- 1 Install the EPSON Stylus Series printing system and the required printer driver(s).
- 2 Select the Spool Manager from the EPSON Windows program group.
- 3 Either double-click the queue or click the queue once to select it and then select the **Setup** option

on the **Queue** menu.

- 4 Select the **Remote Despool** tab and then click the **Printing from remote queues** option.
- 5 Click the **Browse** button and select the remote server spool directory that will hold journal files sent from host workstations.
- 6 The Spool Manager then identifies journal files and submits them for printing.

## See Also

[Option Menu](#)

## The Document Menu

The Spool Manager **Document** menu allows you to control journal files in your EPSON Stylus print queue. Using this menu, you can hold a journal file, re-queued it for printing later, delete it, or keep it for subsequent re-printing.

To select any of these options for a journal file, click the journal file, click Document, and click an option on the **Document** menu. When you select a Document menu option, a check mark appears next to it. To turn off an option, click it again.

## The View Menu

The Spool Manager **View** menu allows you to select the information the EPSON Spool Manager display. Using this menu, you can also specify whether you want the EPSON Despooler pop-up window to appear when you select Print from your application. When you select a **View** menu option, a check mark appears next to it. To turn off an option, click it again.

If you turn off the Show Despool Popup option, the Despooler window normally does not appear when you send a print job to the printer. It does appear, however, if the printer reports an error such as paper out.



## The Options Menu

The Spool Manager **Options** menu allows you to specify the default spool directory, set the timers, and select the font used in the Spool Manager window.

### Default Spool Directory

Choose this option to change the default spool directory setting. Journal files will be sent to this directory instead of the TEMP directory. This option is equivalent to the Spool Directory setting in the Queue Menu Setup option except that it applies to all queues instead of only the select queue.

### Timers

Using the Timers Setup box, you can set the update and/or remote timers.

#### Update Timer

The **Update Timer** tells the Spool Manager how often to refresh the information displayed in the EPSON Spool Manager window.

#### Remote Timer

The **Remote Timer** tells a remote Spool Manager how often to look for new journal files in a network directory.

See the Queue Menu for more information about network printing.

### Font

The Font option allows you to set the default font used to display information in the Spool Manager window. All of your installed Windows fonts are available. This option also allows you to select bold and/or italics and specify the print size.

### See Also

Queue Menu

## **The Help Menu**

The Spool Managers Help menu allows you to access Spool Manager Help and copyright, and version information.

## Default Spool Directory

The directory to which print data is sent as part of the first step in the printing process. This directory is normally specified by the DOS environment string `SET TEMP=` in your CONFIG.SYS file.

You can change the default spool directory by selecting **Default Spool Directory** from the **Options** menu in the EPSON Spool Manager.

## **Despooler**

The name of the software that takes the journal files from the Spool Manager and sends them to the printer. The Despooler window appears on your screen when it receives a journal file, and allows you to stop, pause, or reprint the file. It also displays printer status information. If you are using Windows 95, the Status Monitor appears at the bottom of the Despooler window.

## **Journal File**

A compact file that the EPSON Stylus Series printing system generates to provide a complete description of your print job in a form that can be processed easily and quickly. A journal file is similar to a tape recording in that it can be played, replayed, or played back-to-front (Reverse Page Order).

## Queue(s)

A queue is a list of journal files that are currently printing or waiting to be printed. Queues are always associated with a local or remote (across a network) print device.

The EPSON Spool Manager displays your printer name and the associated queue. It also displays an icon representing your print device. The Spool Manager places a wait symbol on the appropriate printer icon when the queue is on hold or paused. You can hold a queue using the **Hold** command on the Queue menu.

## **Release Time**

The time it takes to regain control of your application after you send a print job to the printer. The EPSON Stylus Series printing system quickly processes the print job and then releases your application so that you can continue working while your printer is printing.

## **EPSON Status Monitor utility**

The Status Monitor utility regularly monitors the printer status when you are using Windows 95. If it detects a printer error, it will inform you with an error message.

You can also use this utility to check how much ink is remaining before or during printing.

To use the Status Monitor, click the Utility tab and double-click the EPSON Status Monitor icon.



## Printer Status

Even if you have turned off **Show Despool Popup** on the **View** Menu of the Spool Manager, the EPSON Despooler pops up only when errors, such as Paper out and Printer off line, are reported by your EPSON Stylus printer. Try taking the printer off line or removing paper from the input tray while printing to demonstrate this capability.

