

## Contents

[Quick Guide to Using Help](#)

[Driver Settings](#)

[Printing Procedures](#)

[Spool Manager, Despooler, and Status Monitor](#)

[Printing Supplies](#)

[Copyright and Trademark Information](#)

## Quick Guide To Using Help

The EPSON Stylus Series Help window works just like the Help windows you find in other applications. If you are not familiar with how Help operates, here are a few tips to get you started.

### Using the Help Buttons

There are seven buttons near the top of the Help window, as described below. You can "press" a button by placing the pointer on the button and clicking it with your mouse.

|                 |   |
|-----------------|---|
| <b>Contents</b> | <b>Returns you to the main Help contents dialog box</b>         |
| <b>Search</b>   | <b>Searches for information about a particular topic</b>        |
| <b>Back</b>     | <b>Returns you to the previous screen</b>                       |
| <b>History</b>  | <b>Displays a list of the topics you have viewed</b>            |
| <b>Glossary</b> | <b>Displays a list of glossary terms</b>                        |
| <b>&gt;&gt;</b> | <b>Proceeds to the next topic in the browse sequence</b>        |
| <b>&lt;&lt;</b> | <b>Returns you to the previous topic in the browse sequence</b> |

### Terms and Functions

Hypertext and hypergraphics are links to more information about on-screen terms, icons, and functions. In some cases, they also provide you with links to other related topics.



**Important!** When you move the pointer over hypertext or hypergraphics, the pointer changes from an arrow to a pointing finger. This means you can click the text or graphics to get more information.

#### Hypertext

Your screen displays hypertext in green.

If you click hypertext with a dotted underline, Help displays a pop-up box that contains more information about that term. To close the pop-up box, click anywhere on the screen or press any key on the keyboard.

If you click hypertext with a solid underline, Help jumps directly to that topic.

#### Hypergraphics

Hypergraphics are on-screen icons or graphics that you click to view more information.

### Three Kinds of Help

When using the printer driver menus, click the Help button at the bottom of the menu to view the Help

window. In addition, there are two other ways to quickly learn more about a setting or option: Help Tips and What's This? (Windows 95 only).

### **Help Tips**

Help Tips provide a short explanation of a setting or option. To view Help Tips, move the pointer over a setting or option and leave it there for a few seconds.

### **What's This?**

If you are using Windows 95, you can display a more detailed explanation of a setting or option by right-clicking the item, and then clicking the What's This? box that appears. The screen displays Help related only to the topic you selected.



## Copyright and Trademark Information

# EPSON

The EPSON Stylus Series Printing System is a development of Software 2000 Ltd., Oxford, England.

Portions Copyright © 1994, 1995, 1996 SEIKO EPSON Corporation

Copyright © 1994, 1995, 1996 Software 2000 Ltd., Oxford, England

All rights reserved.

**All other trademarks of their respective owners are recognized. EPSON disclaims any and all rights in those marks.**

# Contents

[Quick Guide to Using Help](#)

[Driver Settings](#)



[Main menu](#)



[Paper menu](#)



[Utility menu](#)



[More Settings Dialog Box](#)



[Alphabetical list of printer driver topics](#)

[Printing Procedures](#)

[Spool Manager, Despooler, and Status Monitor](#)

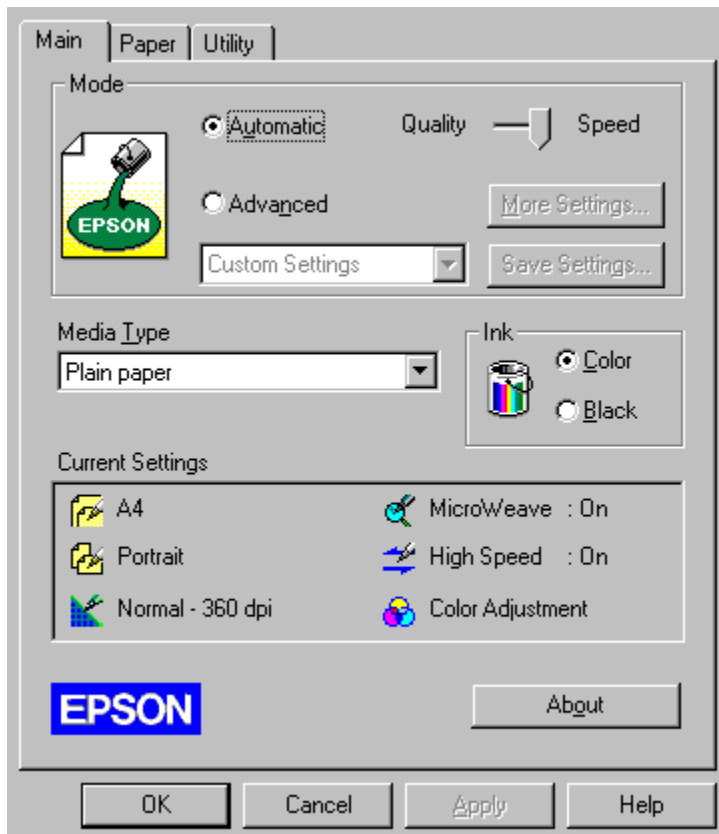
[Printing Supplies](#)

[Copyright and Trademark Information](#)



## Main menu

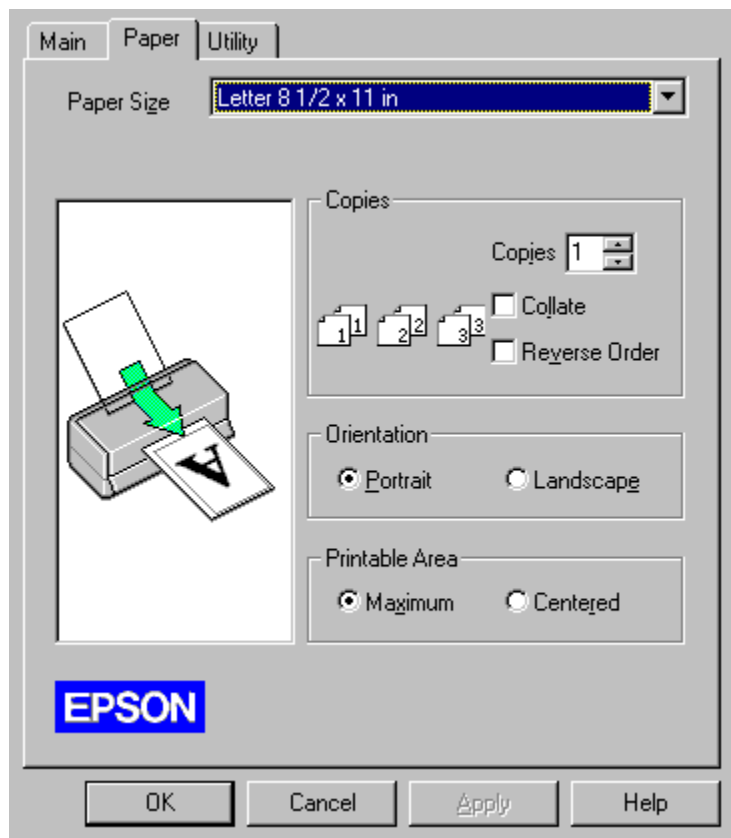
Click the Main tab at the top of the driver settings window to view general printer driver options. Click an option in the example below for more information.





## Paper menu

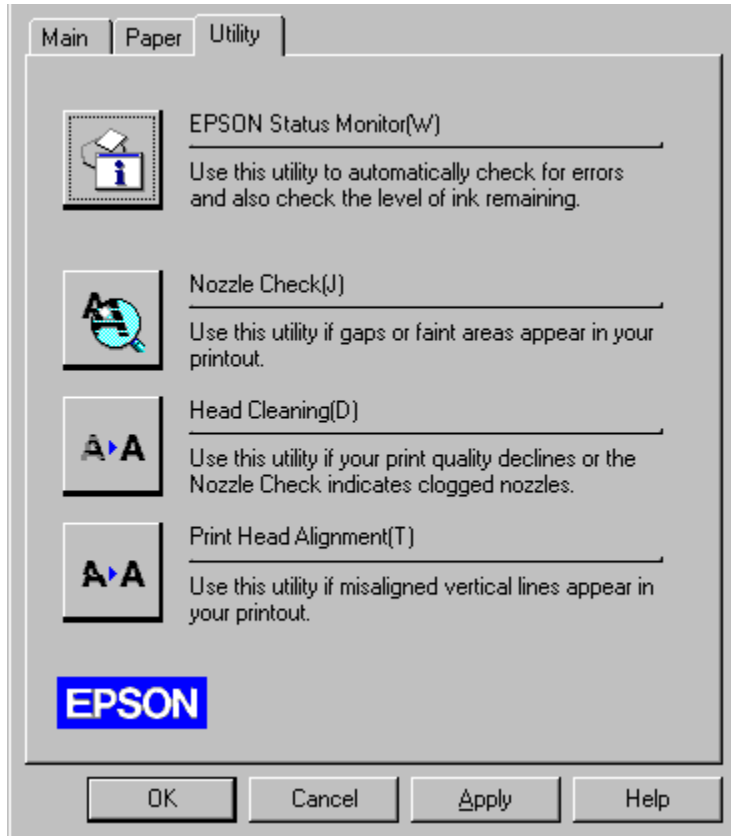
Click the Paper tab at the top of the driver settings window to view the available paper options. Click an option in the example below for more information.





## Utility menu

Click the Utility tab at the top of the driver settings window to view the printer utilities. Click a utility in the example below for more information. If you use Windows 3.1, the Status Monitor utility does not appear.

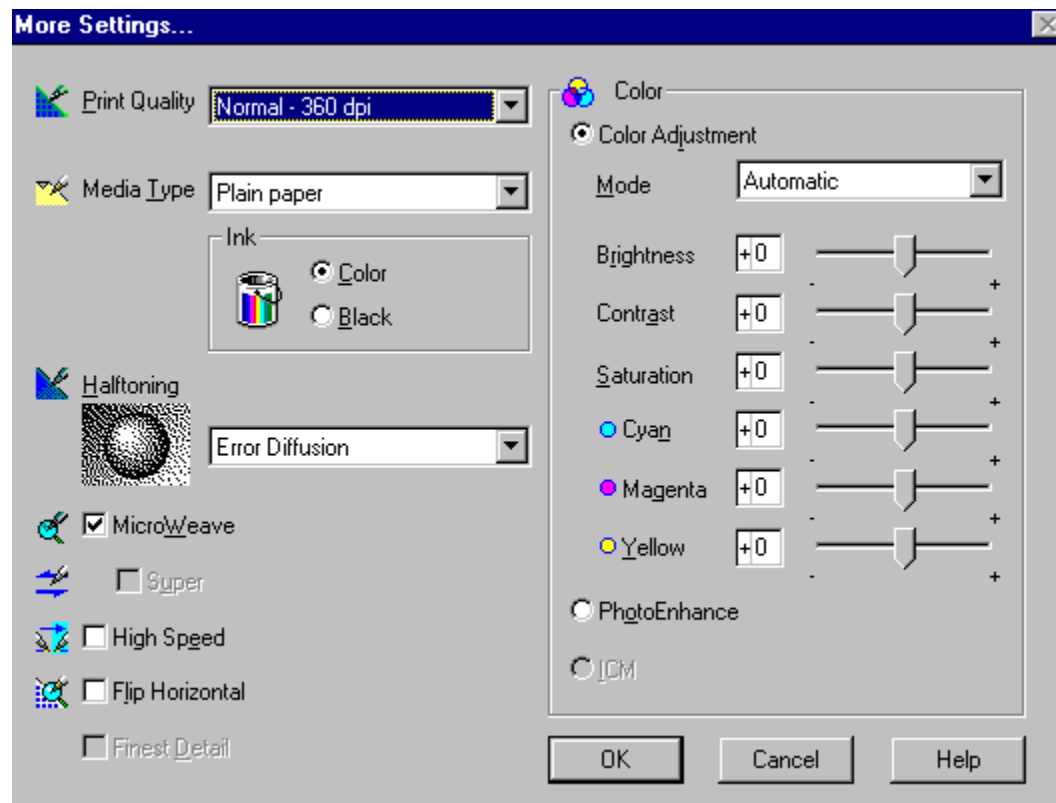






## More Settings

On the Main menu, click Advanced and then click the More Settings button to view the most detailed settings available in your printer driver. Click an option in the example below for more information.





## Alphabetical list of printer driver topics

This list covers the buttons, settings, and displays shown on the printer driver menus. To see information about an item below, click that item.

### All menus

[About](#)

[Apply](#)

[Cancel](#)

[OK](#)

### Main menu

[Advanced mode](#)

[Automatic mode](#)

[Current Settings display](#)

[Ink](#)

[Media Type](#)

[More Settings](#)

[Quality vs. Speed slide bar](#)

[Save Settings](#)

### More Settings dialog box

[Color Adjustment](#)

[Finest Detail](#)

[Flip Horizontal](#)

[Halftoning](#)

[High Speed](#)

[ICM](#)

[Ink](#)

[Media Type](#)

[MicroWeave](#)

[PhotoEnhance](#)

[Print Quality](#)

### Paper menu

[Duplication Method](#)

[Orientation](#)

[Paper settings display](#)

[Paper Size](#)

[Printable Area](#)

### Utility menu

[EPSON Status Monitor utility](#)

[Head Cleaning utility](#)

[Nozzle Check utility](#)

[Print Head Alignment utility](#)





Click the Apply button to put your new settings into effect before you exit the printer driver or return to your application.



Click OK to exit a dialog box or the printer driver and save your settings.



## **Cancel**

Click Cancel to exit a dialog box or the printer driver without saving your settings.

 **About**

Click About to display copyright and version information about the printer driver.



## **Automatic mode**

When Automatic is selected on the Main menu, the printer driver software determines the best printing method according to the Media Type and Ink settings you make. Be sure to choose the media you have loaded and specify either Color or Black ink.

If you use Automatic mode with the Media Type setting set to Plain Paper or a high/photo quality setting, the Quality vs. Speed slide bar appears. Select either Quality or Speed and the driver will make the appropriate settings for you.

### **See also**

[Advanced mode](#)





## **Quality vs. Speed slide bar**

When you use Automatic mode and select Plain Paper or Photo Quality Ink Jet Paper, or Photo Quality Glossy Paper as your Media Type setting, the Quality vs. Speed slide bar appears on the Main menu. Move the slider to the left or right depending on the type of document you are printing and the printout results you require. For most print jobs, select Quality so the driver can make the highest-quality settings for you. If you are printing a draft copy, select speed so you can get a faster printout. The slide bar disappears if you select Advanced mode.



## Advanced mode

If you prefer to have more control over the settings, select Advanced mode. When you choose Advanced mode, the More Settings and Save settings buttons become active. Click the More Settings button to view the [More Settings dialog box](#), which includes the most detailed settings in the driver. Once you have selected the settings you want, click OK. You can save these settings as a group by clicking Save settings.

### Changing settings based on the type of document you are printing

The [Advanced settings list](#) (activated when you click Advanced) contains several predefined settings that have been optimized for certain types of documents. Click anywhere in the box under Advanced to view the Advanced settings list.

**Note:** Be sure to select the Print Quality setting you want, the Media Type you have loaded in the printer, and the correct Ink setting.

### See also

[Saving your custom setting](#)



## Advanced settings list

The settings available in the Advanced settings list include the following and any custom settings you save:

### **Photo**

This setting is best for printing photographs. It increases the contrast in an image.

### **Text/Graph**

This setting is best for graphics-intensive documents such as charts and graphics for presentations. It intensifies the colors but lightens the midtones and highlights of an image.

### **PhotoEnhance**

This setting is best for printing images captured using a video, digital camera, or scanner. EPSON PhotoEnhance automatically adjust the contrast, saturation, and brightness of the original image data to produce sharper, more vivid color printouts. PhotoEnhance does not affect your original image data.

### **Text**

This setting is best for printing text-only documents. This setting provides you with faster printing than the Text/Graph setting with only a slight decrease in printing quality.

### **Economy**

This setting provides you with faster printing and saves ink. The printer uses less ink by printing fewer dots per character. Choose this setting for rough drafts of text only.

### **ICM**

This setting provides you with color matching schemes that give you more precise reproduction of the colors on your screen.

**Note:** You may need to experiment with different settings until you get the output you want. Also, selecting ICM or PhotoEnhance automatically sets the Ink setting to Color.

For details on making and saving custom settings, see [Saving your custom settings](#).



## Saving your custom settings

You can save your custom settings as a group in the Custom Settings dialog box. Then you can select this group of settings from the [Advanced settings list](#) on the Main menu. You can save up to 10 custom settings.

To save your settings, follow these steps:

1. From the Main menu, click Advanced.
2. Click More Settings to access the [More Settings dialog box](#) if necessary make your desired settings..
3. Click the Save settings button. The Custom Settings dialog box appears:



4. Enter a name for your settings in the Name field (up to 16 characters). Click Save. The name you assigned to the settings now appears in the Advanced settings list so you can choose it whenever you want to use these settings.

To delete a custom setting, click Save settings on the Main menu, select the setting in the Custom Settings dialog box, and click the Delete button.

**Note:** You can not delete the predefined settings: Photo, Text/Graph, PhotoEnhance, Text, ICM, and Economy.

## Media Type

Always match the Media Type setting with the kind of paper or other media you loaded in the printer. If the name of your EPSON paper is not in the Media Type list, see [Matching your media with the Media Type setting](#).

**Note:** The availability of special media varies by country.

## **Ink**

Specifies Color (C,LC,M,LM,Y,K) or Black ink printing. Your printer's contains cyan (blue-green), magenta, yellow, and black (K) ink. When you select Black on the Main menu, colors are automatically converted to grayscale values.

If your document includes color, choose Color. If you are printing black text only, a draft, or if you want colors to print as varying shades of gray, choose Black.

## Current Settings

Displays the currently selected settings. You must click [Advanced](#) and then the [More Settings](#) button to change make some of the settings shown here. Other settings are on the [Paper menu](#).



## Print Quality

The available Print Quality settings are:

### **Fine - 720 dpi**

This setting prints at 720 dpi giving you very good-quality printouts. Select this setting when you use plain paper, EPSON Photo Quality Ink Jet Paper, EPSON Photo Quality Glossy Film, or EPSON Photo Quality Glossy Paper as your Media Type setting.

### **Normal - 360 dpi**

This setting prints at 360 dpi giving lower print quality but higher print speed. Select this setting when you use plain paper, EPSON Ink Jet Transparencies, or EPSON 360 dpi Ink Jet Paper as your Media Type setting.

### **Economy**

This setting is useful for saving ink. Select this setting when you use plain paper for printing rough drafts of text.

**Note:** Not all Print Quality settings are available for all media types.

### **See also**

[Matching your media with the Media Type setting](#)



## **Media Type (More Settings dialog box)**

Always match the Media Type setting with the kind of paper or other media you have loaded in the printer. If the name of your EPSON paper is not in the Media Type list, see [Matching your media with the Media Type setting](#).

**Note:** The availability of special media varies by country.

## **Ink (More Settings dialog box)**

Specifies Color (C,LC,M,LM,Y,K) or Black ink printing. Your printer's contains cyan (blue-green), magenta, yellow, and black (K) ink. When you select Black on the Main menu ink, colors are automatically converted to grayscale values.

If your document includes color, choose Color. If you are printing black text only, a draft, or you want colors to print as varying shades of gray, choose Black.

## Halftoning

Halftoning means using patterns of colored ink dots to precisely reproduce an image and its colors. The halftoning method you should choose depends on the type of image you are printing. The halftoning image changes to show the effect of each setting.

Select **No Halftoning** when printing black text only. You can not select this setting for color printing.

Select **Error Diffusion** when printing photographic images. To make edges and colors softer, Error Diffusion blends every colored dot in your image with the surrounding colored dots.

Dithering arranges dots in orderly patterns and is best suited for printing charts, graphs, and other images that require precise, solid areas of bright colors. Select **Fine Dithering** for images with significant detail but limited shading.

**Note:** The available Halftoning settings depend on the Print Quality setting and the setting you choose in the Advanced settings list.



## **MicroWeave**

MicroWeave allows your printer to generate superior output because graphics data is re-ordered and printed in finer increments. This technology reduces the possibility of banding, the light horizontal lines that can mar an image.

For best results, always leave MicroWeave on for color printing. You can turn on MicroWeave for black printing, but the printing time is significantly longer.

When Photo Quality Ink Jet Paper or Photo Quality Glossy Paper is the Media Type setting, you can select Super if your printout still has banding problems even with MicroWeave turned on.

**Note:** MicroWeave is switched off automatically when Economy or Text is selected as the predefined setting in the Print dialog box, or when Economy is selected as the Print Quality setting in the More Settings dialog box.



## High Speed

This setting activates bidirectional printing so your printer prints both left-to-right and right-to-left. High Speed mode speeds up printing, but you should turn it off for your highest-quality output.

**Note:** If misaligned vertical lines appear when printing in High Speed mode, you may need to align the print heads.

### See also

[Print Head Alignment utility](#)



## **Flip Horizontal**

This setting prints an image as it would appear in a mirror; text and graphics appear backwards.

If your application program does not automatically flip images for iron-on transfers, use this feature.(U.S.A only)



## **Finest Detail**

If you select Fine - 720 dpi as the Print Quality setting, you can turn on Finest Detail to print text, solid graphics, and line art with very sharp edges. It may take considerably longer to print using this mode and it will increase your memory requirements. Additionally, you may not be able to print some larger images, and some patterns may not print correctly. If you experience problems printing in this mode, turn it off or add more memory.



## Color Adjustment

Select this setting to use the color matching and enhancement methods provided by the printer driver.

### Mode

Click in the Mode box to select one of these modes:

- Automatic**  
Provides output that closely matches the original data.
- Photo-realistic**  
Increases the contrast in an image. Use this setting for color photographs.
- Vivid**  
Intensifies the colors and lightens the midtones and highlights of an image. Use this setting for presentation graphics, such as charts and graphs.

### Slide bars

The Color Enhancement slide bars adjust the following options in a range of -25% to +25%. Drag the scroll bar to the right or left with your mouse to adjust the settings. You can also type -25 to +25 in the boxes next to the slide bars.

- Brightness**  
Changes the overall lightness or darkness.
- Contrast**  
Magnifies or minimizes the difference between the bright and dark parts.
- Saturation**  
Modifies the vividness of color. The lower the saturation, the duller the colors. The higher the saturation, the more vivid the colors.
- Cyan, Magenta, and Yellow**  
Adjusts the amount of each of the three primary colors.

**Note:** When Color is selected as the Ink setting, all settings in the Color box are available. When Black is selected, only the Contrast and Brightness settings are available.





## PhotoEnhance

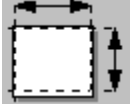
This setting is best for printing images captured using a video, digital camera, or scanner. EPSON PhotoEnhance feature produces sharper images and more vivid colors by automatically adjusting the contrast, saturation, and brightness of the original image data.

**Note:** *Selecting PhotoEnhance automatically sets the Ink option to Color. Changing the Ink setting after PhotoEnhance is selected returns the settings list to Custom Settings.*

*Printing with PhotoEnhance selected may take longer depending on your computer system and the amount of data contained in your image.*



Select ICM when printing scanned photographs or computer graphics. This setting uses the Windows 95 color matching method to automatically match the colors in your printout with the colors displayed on your screen. Be aware that the ambient light and the age, quality, and settings of the monitor can affect the quality of your color matching.



## Paper Size

You can use any of the following predefined paper sizes, or you can define a custom paper size as described below.

Select the paper size you have loaded in the printer. Your choices are:

| <b>Type</b>                | <b>Dimensions</b>  |
|----------------------------|--|
| Letter                     | 8-1/2 X 11 inches  |
| Legal                      | 8-1/2 X 14 inches  |
| A4                         | 210 X 297 mm   |
| Half letter                | 5-1/2 X 8-1/2 inches   |
| A5                         | 148.5 X 210 mm   |
| Executive                  | 7-1/2 X 10 inches  |
| Envelope #10               | 4-1/8 X 9-1/2 inches   |
| Envelope DL                | 110 X 220 mm   |
| Envelope C6                | 114X 162 mm  |
| Index Card 5 X 8in         | 5 X 8 inches   |
| Index Card 8 X 10in        | 8 X 10 inches  |
| A6 Index Card              | 105 X 148 mm   |
| EPSON Photo Paper 4 X 6 in | 4 X 6 Inches   |
| B5                         | 182 X 257 mm   |
| User Defined               | 100 to 241 mm X 100 to 1117 mm, 4 to 9.5 inches X 4 to 44 inches |

**Note:** Always load paper into the sheet feeder short edge first. Load envelopes flap edge first with the flap side down.

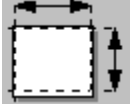
### Defining a custom paper size

To define a custom paper size, follow the steps below.

1. From the Paper menu, click anywhere in the Paper Size box.
2. Use the arrows on the right to scroll through the list until you see User Defined. Click User Defined.
3. Enter the paper width and height in the User Defined Paper Size dialog box.

**Note:** The unit of measurement is set by your operating system. See your system documentation for instructions on changing the unit of measurement.

4. Click OK to use the new paper size.



## **Paper Source**

The EPSON Stylus COLOR series printers have built-in sheet feeders, so you do not need to change the Paper Source setting.

## Duplication Method

These settings let you specify the number of copies and the printing order.

### Entering the number of copies

To specify the number of copies, click in the Copies box and type the number you want, or click the arrows next to the Copies box. You can enter a number from **1** to **99**.

### Choosing the Collation Method

The two additional options in the Duplication Method box are **Collate** and **Reverse Order**. Click these options to turn them on. A check inside the box indicates the option is turned on.

#### To print multiple-page documents in sets:

Turn **Collate** on by clicking the check box.

#### To print one multiple-page document so that its pages are in the right order after printing:

Click only **Reverse Order**.

#### To print one or more document sets so that each is stacked in the correct order after printing:

Click both the **Collate** and **Reverse Order** check boxes.

**Note:** The above options may require additional system memory. If a memory error message appears and you are unable to print your document, you should increase system memory, decrease the number of open applications, reduce the size of your document, or turn off collation and/or reverse page ordering.



## Orientation

To change the orientation, click one of the following buttons on the Paper menu. The image on the left changes to show the orientation.

**Portrait** -- Print direction is short edge first, like most magazines.

**Landscape** -- Print direction is long edge first, like many spreadsheets.

**Note:** Normally, you should select the paper orientation in your software application, not with the driver.

## **Printable Area**

Sets the printable area to Maximum or Centered. Centered means that your document is printed at an equal distance from all edges of the paper, directly in the center. Maximum means using the largest possible printable area of the paper, so if the minimum margins are not the same on all sides, your printout may shift slightly on the paper.

## **Paper settings display**

The image on the left side of the Paper menu changes to reflect several of the settings you make on the Paper menu.



## Head Cleaning utility

Cleans the color and black print heads. If the print head nozzles become clogged, print quality will decline and you may notice faint areas or areas where dots are missing. Use this utility to ensure the nozzles are unclogged and delivering ink properly. Before and after using this utility, use the [Nozzle Check utility](#) to verify whether or not the nozzles are clogged and need to be cleaned. If the Nozzle Check utility indicates that the heads need to be cleaned, clean the print heads. If the Nozzle Check utility indicates that the heads are not clean after using the Head Cleaning utility, clean the print heads again.

**Note:** To avoid wasting ink, clean the print heads only if print quality declines.

### Using the Head Cleaning utility

- 1 Make sure that no ink out lights are flashing or on.
- 2 Open the printer driver settings window.
- 3 Click the Utility tab. You see the Utility menu.
- 4 Click the Head Cleaning button.
- 5 Follow the instructions on your screen to complete the cleaning procedure.

**Caution:** This operation takes about 1 minute to complete. Never turn off the printer while the power light is flashing.

## Nozzle Check utility

Checks whether the print head nozzles are clogged and need to be cleaned. If the Nozzle Check utility indicates that they need to be cleaned, open the [Head Cleaning utility](#) from this utility and clean the print head nozzles.

**Note:** Before using this utility, make sure several sheets of paper are loaded in the print.

## Print Head Alignment utility

Aligns the print heads to print images clearly. Use this if you find that your printed image is fuzzy or vertical or horizontal lines in your printout are not properly aligned.

The utility includes both black and color alignment features.

1 Make sure the printer is on and paper is loaded in the sheet feeder.

**Caution:** Use paper at least 210 mm (8.27 inches) wide; for example, A4 or letter size paper loaded short edge first. Otherwise, the print head will spray ink directly onto the platen.

2 Open the printer driver settings window.

3 Click the Utility tab. You see the Utility menu.

4 Click the Print Head Alignment button.

5 Follow the instructions on your screen to align the print head.

## **EPSON Status Monitor utility**

The Status Monitor utility regularly monitors the printer status when you are using Windows 95. If it detects a printer error, it will inform you with an error message.

You can also use this utility to check how much ink is remaining before or during printing.

For details on the EPSON Status Monitor, see [Using the Status Monitor\(Windows 95\)](#).



# Contents

[Quick Guide to Using Help](#)

[Driver Settings](#)

[Printing Procedures](#)



[General Printing Procedures](#)



[Matching your media with the Media Type Setting](#)



[Special Printing Procedures](#)

[Spool Manager, Despooler, and Status Monitor](#)

[Printing Supplies](#)

[Copyright and Trademark Information](#)

## **General Printing Procedures**

This section describes the basic printer driver settings you should use to get the best performance and output from your EPSON Stylus Series printer.

### **Using Automatic Mode**

When Automatic mode is selected on the Main menu, the printer software determines the best printing method by analyzing the print data in your print job, the Media Type setting, and the Ink setting you select. To view the Main menu, choose Print or Print Setup from the File menu of your application program. In the dialog box that appears click Printer, Setup, Properties, or Options. (You may have to click a combination of these buttons.)

Before printing, always select the correct Media Type and Ink settings.

Also, if you select Plain paper or one of the High- or Photo-quality media settings as the Media Type setting, the Quality vs. Speed slide bar appears in the Mode box. Move the slider to the right or left depending on the effect you want.

## Matching your media with the Media Type setting

Match your special media with the Media Type setting.

| Media name                              | Media Type setting   | Parts Number   |
|---|--|--|
| EPSON 360 dpi Ink Jet Paper             | 360 dpi Ink Jet Paper  | A4 S041059, S041025<br>Letter S041060                  |
| EPSON High Quality Ink Jet Paper        | Photo Quality Ink Jet Paper  |  |
| EPSON Photo Quality Ink Jet Paper       | Photo Quality Ink Jet Paper  | A4 S041061, S041026<br>Letter S041062<br>Legal S041067 |
| EPSON Photo Quality Glossy Paper        | Photo Quality Glossy Paper   | A4 S041126<br>Letter S041124                           |
| EPSON Photo Quality Glossy Film         | Photo Quality Glossy Film  | A4 S041071<br>Letter S041072                           |
| EPSON Ink Jet Transparencies            | Ink Jet Transparencies   | A4 S041063<br>Letter S041064                           |
| EPSON Photo Quality Ink Jet Card        | Photo Quality Ink Jet Paper  | A6 S041054<br>5 X 8 S041121<br>10 X 8 S041122          |
| EPSON Iron-On Transfer Paper            | Photo Quality Glossy Film  | Letter   |
| EPSON Photo Quality Self Adhesive Sheet | Photo Quality Ink Jet Paper  | A4 S041106   |
| EPSON Photo Paper 4 X 6 in              | Photo Quality Glossy Paper(Glossy side)<br>Photo Quality Ink Jet Paper(Un glossy side) | xxxxxxx  |

**Note:** The availability of special media varies by country.



## Special Printing Procedures

Generally, leaving the Mode setting on the Main menu set to Automatic provides you with the highest-quality printout. However, there may be times when you want to make special adjustments to your image or document. Select Advanced as the Mode setting to get a level of control unmatched by many application programs.

### Using Advanced Mode

When Advanced is selected, the Advanced settings list and other settings on the More Settings dialog box are enabled. To select a setting from the Advanced settings list, click Advanced. Then click anywhere in the box below Advanced, and select your setting from the list.

Be sure to choose the Media Type and Ink settings first because they may limit what other settings are available. The settings you make are reflected in the Current Settings display on the Main menu. To change the settings, click the More Settings button to access the More Settings dialog box.

The settings available in the Advanced settings list include the following and any custom settings you save:

#### Photo

This setting is best for printing photographs. It increases the contrast in an image.

#### Text/Graph

This setting is best for graphics-intensive documents such as charts and presentations. It intensifies the colors but lightens the midtones and highlights of an image.

#### PhotoEnhance

This setting is best for printing images captured using a video, digital camera, or scanner. EPSON PhotoEnhance feature produces sharper images and more vivid colors by automatically adjusting the contrast, saturation, and brightness of the original image data.

#### Text

This setting is best for printing text-only documents. This setting provides you with faster printing than the Text/Graph setting with only a slight decrease in printing quality.

#### Economy

This setting provides you with faster printing and saves ink. The printer uses less ink by printing fewer dots per character. Choose this setting for rough drafts of black text only.

#### ICM

This setting provides you with color matching schemes that give you more precise reproduction of the colors on your screen.

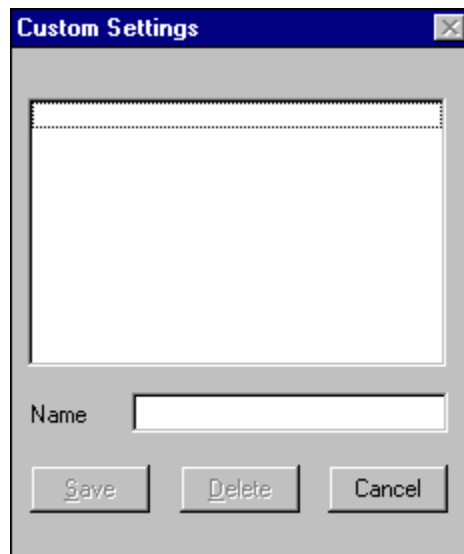
If you make changes after you have selected a setting from the Advanced settings list, the Advanced settings list shows Custom Settings. To save your custom settings as a group, follow the steps below.

## Saving Your Custom Settings

You can save your custom settings as a group in the Custom Settings dialog box. Then you can select this group of settings from the [Advanced settings list](#) on the Main menu. You can save up to 10 custom settings.

To save your settings, follow these steps:

1. From the Main menu, click Advanced.
2. Click More setting to access the [More Settings dialog box](#) if necessary make your desired settings.
3. Click the Save settings button on the Main menu. The Custom Settings dialog box appears:



4. Enter a name for your settings in the Name field (up to 16 characters). Click Save. The name you assigned to the settings now appears in the Advanced settings list so you can choose it whenever you want to use these settings.

To delete a custom setting, click Save settings on the Main menu, select the setting in the Custom Settings dialog box, and click the Delete button.

**Note:** You can not delete the preset settings: Photo, Text/Graph, PhotoEnhance, Text, ICM, and Economy.

### See Also

[General Printing Procedures](#)

# Contents

[Quick Guide to Using Help](#)

[Driver Settings](#)

[Printing Procedures](#)

[Spool Manager, Despooler, and Status Monitor](#)

[About the Spool Manager and Despooler](#)

[Spool Manager](#)

[Despooler and Status Monitor](#)

[Printing Supplies](#)

[Copyright and Trademark Information](#)



## About the Spool Manager and Despooler

When you print a document, the EPSON Stylus Series printer driver converts the print job into a journal file. To quickly release your software application from the task of printing, EPSON Spool Manager sends this journal file to the default spool directory. The Spool Manager then assigns the journal file to the appropriate print queue. When the journal file reaches the front of the queue, the Spool Manager sends it to the EPSON Despooler and then to the target printer.

When it receives a journal file, the Despooler appears on your screen to show you the progress of the current journal file and to identify printer status information, such as paper out and printer off line. If you are using Windows 95, the Despooler also includes the Status Monitor, which provides more information about printer status and remaining ink.

The Spool Manager gives you control over the Despooler, print queues, and journal files. It also allows you to enable remote network printing.

The Spool Manager starts automatically when you select **Print** from your application.

**Note:** The screen displays the Despooler when a journal file is being sent to the printer. If you do not want the Despooler to appear, turn off the **Show Despool Popup** option in the Spool Managers View Menu.

### See Also


Spool Manager

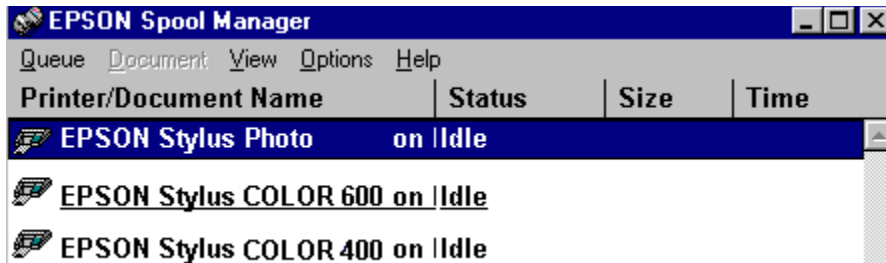
Despooler and Status Monitor



## Spool Manager

To access the Spool Manager:

Double-click  from the Windows desktop or the EPSON program group icon in Windows. You see the Spool Manager Window:



The Spool Manager window displays the list of EPSON Stylus printer queues. These queues contain Journal files that are currently printing or waiting to be printed.

### Queues

Queues shown in normal text represent printers that are supported by the EPSON Stylus Series printing system. Queues shown in faint text are supported by other (conventional) Windows printer drivers.

To change the options of an EPSON Stylus print queue as described in the Queue menu Help screen, double-click the queue or click it once to select it and then choose an option from .

### Journal Files

The Spool Manager window displays journal files in their assigned queue. If you double-click a journal file, the screen displays a dialog box that contains journal file information, such as file size and status. Using this dialog you can stop printing a file, place the file on hold, delete it, or re-queue it for later printing.

Alternatively, you can click a file once to select it and then choose an option from the Document menu

From the Spool Manager you can select:

The Queue Menu

The Document Menu

The View Menu

The Options Menu

The Help Menu

## The Queue Menu

The Spool Manager **Queue** menu allows you to place EPSON Stylus print queues on hold, release them to allow journal files to be printed, and identify queues as local or remote (network printing). These options are described below.

### Holding or Releasing a Queue

**To hold or release a queue:**

- 1 Select the queue in the Spool Manager window.
- 2 Click Queue to display the Queue drop-down menu.
- 3 Click the **Hold** option on the **Queue** menu.

A check mark next to the **Hold** option indicates the queue is currently on hold. When a queue is on hold, the Spool Manager places a wait symbol on the printer icon next to the queue and journal files in the queue are not submitted for printing.

### Using the Windows Print Manager

The EPSON Despooler normally send files directly to the printer.

**To schedule print jobs through the conventional Windows Print Manager:**

- 1 In the Spool Manager window, either double-click the queue or click the queue once and then select the **Setup** option the **Queue** menu.
- 2 Select the **Use Print Manager for this port** option and click the **OK** button.

### Network Printing

The EPSON Stylus Series printing system allows you to send journal files from your workstation (the host) to a shared directory on a network server. These files can then be printed by another (remote) workstation set up to run the EPSON Spool Manager and the associated EPSON Stylus printer driver(s). Follow the steps below to set up the host and remote workstations.

**To set up the host:**

- 1 In the Spool Manager window, either double-click or click the queue once to select it and then the queue or select the **Setup** option on the **Queue** menu.
- 2 Click the **Spool to remote printer** button.
- 3 Click the **Browse** button and select the remote server spool directory that will receive journal files from the Spool Manager.

**To set up a remote workstation:**

- 1 Install the EPSON Stylus Series printing system and the required printer driver(s).
- 2 Select the Spool Manager from the EPSON Windows program group.
- 3 Either double-click the queue or click the queue once to select it and then select the **Setup** option

on the **Queue** menu.

- 4 Select the **Remote Despool** tab and then click the **Printing from remote queues** option.
- 5 Click the **Browse** button and select the remote server spool directory that will hold journal files sent from host workstations.
- 6 The Spool Manager then identifies journal files and submits them for printing.

## See Also

[Option Menu](#)

## The Document Menu

The Spool Manager **Document** menu allows you to control journal files in your EPSON Stylus print queue. Using this menu, you can hold a journal file, re-queue it for printing later, delete it, or keep it for subsequent re-printing.

To select any of these options for a journal file, click the journal file, click Document, and click an option on the **Document** menu. When you select a Document menu option, a check mark appears next to it. To turn off an option, click it again.



## The View Menu

The Spool Manager **View** menu allows you to select the information displayed by the EPSON Spool Manager. Using this menu, you can also specify whether you want the EPSON Despooler pop-up window to appear when you select Print from your application. When you select a **View** menu option, a check mark appears next to it. To turn off an option, click it again.

If you turn off the Show Despool Popup option, the Despooler window normally does not appear when you send a print job to the printer. It does appear, however, if the printer reports an error such as paper out.

## The Options Menu

The Spool Manager **Options** menu allows you to specify the default spool directory, set the timers, and select the font used in the Spool Manager window.

### Default Spool Directory

Choose this option to change the default spool directory setting. Journal files will be sent to this directory instead of the TEMP directory. This option is equivalent to the Spool Directory setting in the Queue Menu Setup option except that it applies to all queues instead of only the selected queue.

### Timers

Using the Timers Setup box, you can set the update and/or remote timers.

#### Update Timer

The **Update Timer** tells the Spool Manager how often to refresh the information displayed in the EPSON Spool Manager window.

#### Remote Timer

The **Remote Timer** tells a remote Spool Manager how often to look for new journal files in a network directory.

See the Queue Menu for more information about network printing.

### Font

The Font option allows you to set the default font used to display information in the Spool Manager window. All of your installed Windows fonts are available. This option also allows you to select bold and/or italics and specify the print size.

### See Also

Queue Menu

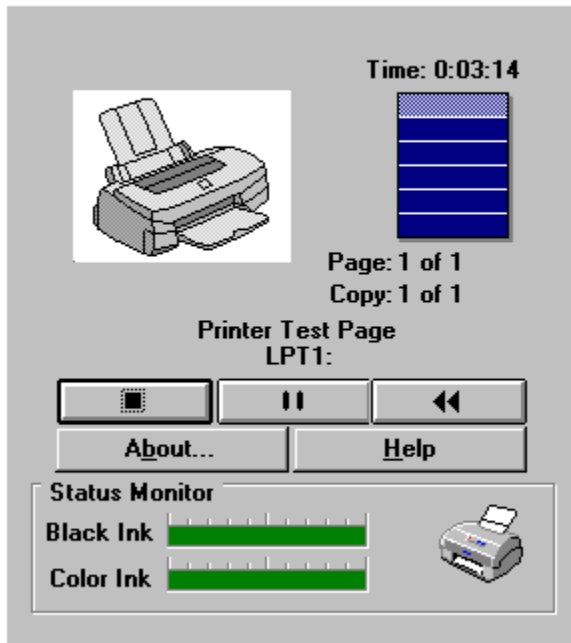
## **The Help Menu**

The Spool Manager Help menu allows you to access Spool Manager Help as well as copyright and version information.



## Despooler and Status Monitor

When you print a file in your application, the Despooler window appears on your screen. You see:



**Note:** The Status Monitor (shown at the bottom of the screen) appears only if you are using Windows 95 with a local printer.

Use the Despooler window for:

[Controlling Journal Files](#)

[Viewing Printer Status.](#)

[Using the Status Monitor \(Windows 95\)](#)



## Controlling Journal Files

The EPSON Despooler lets you control printing the same way you can control it using the [Document](#) menu of the EPSON Spool Manager.

### Buttons

The following buttons allow you to:



**Stop** -- Cancel printing.



**Pause** -- Pause printing until you click it again.



**Reprint** -- Restart printing from the current page or reprints the document.

### About and Help

Clicking the **Help** button displays the Despooler and Status Monitor Help screen. Clicking the **About** button displays copyright and version information about the EPSON Despooler.

### See Also

[Spool Manager](#)

## Viewing Printer Status

Time: 0:00:07



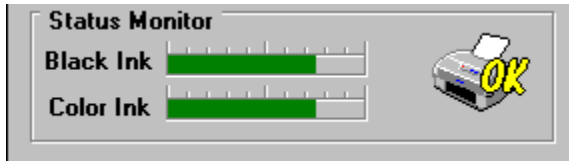
The icon in the upper right of the Despooler window indicates how much of the current page has been printed. The Despooler divides each page of the document into one or more horizontal bands for processing. After the Despooler sends a band to the printer, it starts to process the next band. If your document is very simple, there may be only one band per page. If your document is complex (for example, if it contains graphic images) or if your computer has little free memory, there may be many bands per page.

The Despooler window displays printer status messages above the printer icon.

If an error occurs, the Despooler automatically continues the print job as soon as the problem is fixed. If a serious error occurs, such as printer power failure, you may need to re-queue the journal file using the Document Menu Requeue option.

## Using the Status Monitor (Windows 95)

If you are using Windows 95 and your computer system is equipped with a bidirectional parallel port and a suitable interface cable, the lower portion of the Despooler window displays the Status Monitor:



The **Black Ink** and **Color Ink** level indicators provide a graphical representation of the amount of ink in the cartridges. As you use up ink, the indicator drops in 25% (quarter) increments. When the level drops to 20%, the indicators change from green to yellow. When the level drops to 10% or less, the indicator changes to red.

The printer icon in the Status Monitor changes depending on the printer's status. The printer icons convey the following messages:



The Status Monitor is checking the printer status.



An error has occurred, and your printer cannot print. Check your printer and then resend the print job.



The printer is ready.



The printer is printing.



The ink level is low or the cartridges are empty.

**Note:** This feature is not available for printers connected on a network.



## Automatic Error Reporting

Even if you have turned off **Show Despool Popup** on the **View** Menu of the Spool Manager, the EPSON Despooler pops up when errors occur, such as paper out and printer off line.



[A-D](#)

[E-H](#)

[I-R](#)

[S-W](#)

[Close](#)

**- A -**

[About button](#)

[Additive colors](#)

[Advanced Mode](#)

**- B -**

[Bidirectional parallel port](#)

[Bidirectional printing](#)

**- C -**

[Cancel button](#)

[Collate](#)

[Color Adjustment](#)

[Color box](#)

[Color matching](#)

**- D -**

[Default Spool Directory](#)

[Despooler](#)

[Document menu \(Spool manager\)](#)

[dpi](#)

**- E -**

[Economy \(Print Quality option\)](#)

[EPSON Status Monitor utility](#)

[EPSON Stylus Printing System](#)

[EPSON Stylus series printer driver](#)

[Error Diffusion](#)

**- F -**

[Fine - 720 dpi \(Print Quality option\)](#)

[Fine Dithering](#)

[Finest Detail](#)

[Flip Horizontal](#)

[Font option \(Spool Manager\)](#)

**- H -**

[Halftoning](#)

[Head Cleaning utility](#)

[Advanced settings list](#)

[Apply button](#)

[Automatic Mode](#)

[Brightness](#)

[Browse sequence](#)

[Contrast](#)

[Copies](#)

[Current Settings display](#)

[Custom Settings \(Advanced settings list\)](#)

[Custom Settings dialog box](#)

Help button

High Speed

Holding option (Spool Manager)

- I -

ICM

Ink cartridge

Ink Jet Paper

Ink jet printer

Ink setting

- J -

Journal file

Journals

- L -

Landscape

- M -

Main menu

MicroWeave

Media

More Settings dialog box

Media Type

- N -

Network printing

Normal - 360 dpi (Print Quality option)

Nozzle Check utility

- O -

OK button

Options menu (Spool  
Manager)

Orientation

- P -

Paper menu

Photo Quality Ink Jet Paper

Paper settings display

Portrait

Paper Size

Predefined settings

Photo Quality Glossy Film

Printer Driver

Photo Quality Glossy Paper

Print Head Alignment utility

PhotoEnhance

Print Quality

- Q -

Queue(s)

Queue menu (Spool Manager)

- R -

Release time

Reverse Order

Releasing a queue

- S -

Spool Manager

- T -

Timers option (Spooler)

Transparencies

- U -

Utilities

- V -

View menu (Spool Manager)

- W -

Windows GDI

WYSIWYG

## **About button**

The About button appears in the printer driver settings window. Clicking this button displays copyright and version information about the software you are using.

## **Additive colors**

Colors that are produced by adding together the varying intensities of the three primary colors: red, green, and blue. This is how your screen works.

## **More Settings dialog box**

The More Settings dialog box provides you with the most detailed settings available in your printer driver. See the following for more details on the settings in this dialog box: [Color Adjustment](#), [PhotoEnhance](#), [ICM](#), [Halftoning](#), [Ink](#), [High Speed](#), [Finest Detail](#), [Flip Horizontal](#), [Print Quality](#), and [Media Type](#).

To access the Advanced dialog box, click Advanced and then click More Settings on the Main menu.

## **Apply button**

The Apply button appears on several menus. Clicking this button puts your new settings into effect before you exit the printer driver or return to your application.

## **Automatic Mode**

When Automatic is selected on the Main menu, the printer driver software automatically optimized the settings according to the Media Type, and Ink settings.

Be sure to choose the media you have loaded and specify either Color or Black ink.



## **Bidirectional parallel port**

A port that allows data to flow back-and-forth between your computer and printer. A bidirectional parallel port is needed for your EPSON Stylus printer to send special information to your computer. See your computer documentation (or ask your dealer) to determine if your computer is equipped with a bidirectional parallel port.

Most computer systems come with a bidirectional (PS/2 type) parallel port that meets IEEE 1284 Standards. If your system is not equipped with this type of port, you can purchase a bidirectional parallel interface card from your computer dealer.

## **Bidirectional printing**

A method of printing where the print heads print in both directions, increasing print speed. The **High Speed** setting on the Main Menu enables this type of printing.

## Brightness

The slide bar that controls the lightness or darkness of an image. You can adjust this option in the [More Settings dialog box](#). If this option is dimmed (meaning unavailable), click Color Adjustment and then make the Brightness setting.

## **Browse sequence**

A way to view help information that allows you to proceed from one topic to another in a predetermined order. Click the [>>](#) button near the top of the Help window to follow the browse sequence.

The browse sequence in the EPSON Stylus Help window includes information on how to use the most important features of your printer driver.

## Cancel button

The Cancel button appears at the bottom of the printer driver settings window and dialog boxes. Click the **Cancel** button to exit the printer driver or a dialog box without applying or saving any changes.

## CMYK

Cyan - Magenta - Yellow - Black.

The three primary process (subtractive) colors plus black. Your printer produces a full range of colors by mixing CMYK.

## **Coarse Dithering**

A Halftoning setting in the More Settings dialog box for photographic images or equivalent drawings. This Halftoning setting is best used for images with limited detail and shading.

## **Collate**

A Paper menu option that allows you to collate (sort) copies of a multi-page document into individual sets of that document.



## **Color box**

This box on the More Settings dialog box contains three settings; Color Adjustment, PhotoEnhance, and ICM. You can select one of these settings as a method of modifying or matching color.

## Color Adjustment

The software provided with your printer driver allows you to enhance the color in your printout. This includes three adjustment modes; Automatic, Vivid, and Photo-realistic. It also includes several slide bars to further help you control the color output; Brightness, Contrast, Saturation, Red, Green, and Blue. You can adjust Brightness and Contrast whether Ink is set to Color or Black, but you can only adjust the other options if Ink is set to Color.

To make Color Adjustment settings, open the More Settings dialog box then click anywhere in the Mode box to select an adjustment mode and click and drag the slide bar arrows to increase or decrease an options strength.

## Color matching

Color matching is the process of matching colors in your printout with the colors that appear on your screen. You can select a color matching option from the Color box area in the More Settings dialog box. The Automatic option in the Color Adjustment Mode list contains the color matching software provided with your printer driver and ICM is the software provided by your operating system.

## **Contrast**

Contrast means the degree of difference between the darkest and lightest areas in an image. The higher the contrast, the greater the difference. You can adjust the Contrast value in the [More Settings dialog box](#).

## Copies

This is the number of times you want a document to be printed. The default value is **1**. You can enter a different value on the Paper menu, but you should normally specify the number of copies using the Print function of your application.

## Current Settings display

The Current Settings display shows which settings are currently enabled or disabled. To change a setting shown here, you will have to click the Paper tab to access the [Paper menu](#), or you will have to click the Advanced button and then the More Settings button to access the [More Settings dialog box](#).

## Custom Settings (Advanced settings list)

Custom Settings means that the current settings have been made by you, the user. The Advanced settings list shows Custom Settings if you click the Advanced button and customize the settings on your own or if you select a predefined setting in the Advanced settings list and then make other settings on your own. Any time the Advanced settings list shows Custom Settings, you can save those settings as a group in the Custom Settings dialog box.

## **Custom Settings dialog box**

If you change settings after you have selected the Advanced mode, the Advanced settings list shows Custom Settings. If you want to save your custom settings as a group, click Save settings. The Custom Settings dialog box appears. After typing a unique name in the Name box, click Save. You can save up to 10 settings, and these settings will appear in the Advanced settings list on the Main menu.



## Default Spool Directory

The directory to which print data is sent as part of the first step in the printing process. This directory is normally specified by the DOS environment string `SET TEMP=` in your CONFIG.SYS file.

You can change the default spool directory by selecting **Default Spool Directory** from the **Options** menu in the EPSON Spool Manager.

## **Despooler**

The name of the software that takes the journal files from the Spool Manager and sends them to the printer. The Despooler window appears on your screen when it receives a journal file, and allows you to stop, pause, or reprint the file. It also displays printer status information. If you are using Windows 95, the Status Monitor appears at the bottom of the Despooler window.

## **Document menu (Spool Manager)**

A drop-down menu in the Spool Manager that allows you to hold print jobs, save them for reprinting, delete them from the queue, or re-order them for later printing.

## **dpi**

Dots per inch. The number of dots your printer can print in one inch distance in both the horizontal and vertical dimensions. If you double the dpi, you increase the total number of dots by a factor of four. Resolution is measured in dpi.

**Note:** The Print Quality options do not necessarily yield the same resolutions in both the vertical and the horizontal directions.

## **Economy (Print Quality option)**

A Print Quality option in the More Settings dialog box that saves ink. This mode is best for printing rough drafts of text on plain paper.

## **EPSON Status Monitor utility**

The Status Monitor utility regularly monitors the printer status when you are using Windows 95. If it detects a printer error, it will inform you with an error message.

You can also use this utility to check how much ink is remaining before or during printing.

To use the Status Monitor, click the Utility tab in the printer software window and double-click the EPSON Status Monitor icon.

## **EPSON Stylus Printing System**

A term used to describe the EPSON Stylus series printer, printer driver, Spool Manager, and Despooler, which includes the Status Monitor for Windows 95.

## **EPSON Stylus series printer driver**

A printer driver is the software that runs, or drives, your printer. You can access the printer driver by clicking Print or Print Setup on the File menu in your application or by clicking the Printers icon in Control Panel.



## **Error Diffusion**

A Halftoning setting in the More Settings dialog box for photographic images or equivalent drawings. This is the highest quality but slowest halftoning setting. It blends the colored dots in your image with the surrounding colors to soften your image.

## **Fine - 720 dpi (Print Quality option)**

A Print Quality option that produces almost photographic-quality output at a slower speed and at 720 dpi resolution. This mode is best when used with special media such as glossy paper, glossy film, and ink jet paper.

You can use Fine - 720 dpi for Black or Color printing.

## **Fine Dithering**

A Halftoning setting in the More Settings dialog box for some photographic images, drawings, or detailed presentations. This Halftoning setting is best used for images with a lot of detail but limited shading.

## **Finest Detail**

If you select Fine -720 dpi as the Print Quality setting, you can turn on Finest Detail to print text, solid graphics, and line art with very sharp edges. Be aware that it may take considerably longer to print using this mode and it will increase your memory requirements. Additionally, you may not be able to print some larger images, and some patterns may not print correctly. If you experience problems printing in this mode, turn it off or add more memory.

## **Flip Horizontal**

This setting prints an image as it would appear in a mirror; text and graphics appear backwards.

If your application program does not automatically flip images for iron-on transfers, use this feature.(U.S.A only)

## **Font option (Spool Manager)**

An option on the Options menu in the Spool Manager used to change the Spool Manager window font.

## Halftoning

Process of using tiny dot patterns to represent all the colors you see in an image. Halftoning provides better graphic printouts, but slows down printing. From the More Settings dialog box, you can select the following Halftoning settings (depending on the Print Quality, Media Type, and Ink settings you make): No halftoning, **Fine Dithering**, and **Error Diffusion**.

Select No Halftoning when printing text only.

## **Head Cleaning utility**

Cleans the color and black print heads. If the print head nozzles become clogged, print quality will decline and you may notice faint areas or areas where dots are missing. Use this utility to ensure the nozzles are unclogged delivering ink properly. Before and after using this utility, use the [Nozzle Check utility](#) to verify whether or not the nozzles are clogged and need to be cleaned. If the Nozzle Check utility indicates that the heads need to be cleaned, clean the print heads. If the Nozzle Check utility indicates that the heads are not clean after using the Head Cleaning utility, clean the print heads again.



## **Help Button**

Click the Help button to display the EPSON Stylus Help window.

## **High Speed**

This setting activates bidirectional printing mode so your printer prints both left-to-right and right-to-left. High Speed mode speeds up printing, but you should turn it off for the highest quality output.

## **Holding option (Spool Manager)**

An option on the Queue menu in the Spool Manager that allows you to hold or release a Queue.

## **ICM**

Select ICM when printing scanned photographs or computer graphics. This setting uses the Windows 95 color matching method to automatically match the colors in your printout with the colors displayed on your screen. Be aware that the ambient light and the age, quality, and settings of the monitor can affect the quality of your color matching.

## **Ink cartridge**

The plastic, replaceable ink container. You can check the level of ink remaining with the [Status Monitor](#).

When the ink out lights flash, prepare a replacement ink cartridge. When the ink out lights are on, replace the empty ink cartridge with the replacement ink cartridge.

## **Ink Jet Paper**

Special coated paper used for high quality printing at 360 dpi. Use this paper in **Normal - 360 dpi** or **Fine - 720 dpi** mode when you print detailed images.

## **Ink Jet printer**

A printer that prints each letter, symbol, or image by precisely spraying ink onto paper.

## Ink setting

The two ink setting are **Color** (C,LC,M,LM,Y,K) and Black . You can make this setting on the Main menu or in the More Settings dialog box.

Choose Color if your printout includes color. Choose Black if you are printing black text only, a draft, or if you want colors to print in varying shades of gray.



## **Journal file**

A compact file that the EPSON Stylus Series printing system generates to provide a complete description of your print job in a form that can be processed easily and quickly. A journal file is similar to a tape recording in that it can be played, replayed, or played back-to-front (Reverse Page Order).

## **Landscape**

An **Orientation** setting on the Paper menu that produces a document where the top and bottom edges are longer than the side edges. This setting is best for printing wide spreadsheets and presentations.

## Main menu

This is the menu in the printer driver that provides the most common driver settings. See the following for more details about the settings available on this menu: Automatic, Advanced, More Settings, Save Settings, Media Type, Ink, and Custom Settings display.

## Advanced mode

If you prefer to have more control over the settings select Advanced mode. When you choose Advanced mode, the More Settings and Save settings buttons become active. Click the More Settings button to view the More Settings dialog box, which includes the most detailed settings in the driver. Once you have selected the settings you want and clicked OK, you can save them as a group by clicking Save settings.

### Changing Settings Based on the Type of Document you are printing

The Advanced settings list (activated when you click Advanced) contains several predefined settings that have been optimized for certain types of documents. Click anywhere in the box under Advanced to view the Advanced settings list.

**Note:** Be sure to also select the Print Quality setting you want, the Media Type you have loaded in the printer, and the correct Ink setting.

## **Advanced settings list**

The settings available in the Advanced settings list include the following predefined settings and any Custom Settings you save:

**Photo, Text/Graph, PhotoEnhance, Text, Economy, and ICM.**

## **Media**

The type of materials on which data is printed such as envelopes, plain paper, ink jet paper, and transparency film.

## Media Type

The Media Type setting is included on the Main menu and in the More Settings dialog box for your convenience. You can choose any of the following Media Type options: Plain paper, Ink Jet Paper, Photo Quality Ink Jet Paper, Photo Quality Glossy Paper, Photo Quality Glossy Film, Ink Jet Transparencies.

## MicroWeave

MicroWeave allows your printer to generate superior output because graphics data is re-ordered and printed in finer increments. This technology reduces the possibility of banding, the light horizontal lines that can mar an image.

For best results, always leave MicroWeave on for color printing. When you have the option you can turn on MicroWeave for black printing, but the printing time is significantly longer.

When Photo Quality Ink Jet Paper or Photo Quality Glossy Paper is the Media Type setting, you can select Super if your printout still has banding problems even with MicroWeave turned on.

**Note:** MicroWeave is switched off automatically when Economy or Text is selected as the predefined setting in the Print dialog box, or when Economy is selected as the Print Quality setting in the More Settings dialog box.



## **Network printing**

Your EPSON Stylus Series printer is designed so it can be used on a network.

See also the [Spool Manager](#) and [Despooler](#).

## **Normal - 360 dpi (Print Quality option)**

A Print Quality option that prints at 360 dpi (dots per inch). This option produces fair print quality but the print speed is much quicker than Fine - 720 dpi. Select this setting and use plain paper, EPSON Ink Jet Transparencies, or EPSON 360 dpi Ink Jet Paper for regular printouts.

## Nozzle Check utility

Checks whether the print head nozzles are clogged and need to be cleaned. If the Nozzle Check utility indicates that they need to be cleaned, open the [Head Cleaning utility](#) from this utility and clean the print head nozzles.

**Note:** Before using this utility, make sure several sheets of paper are loaded in the print.

## OK Button

Click the **OK** button at the bottom of the driver settings window to save all your setting changes and exit the printer driver.

## Options Menu (Spool Manager)

A drop-down menu in the Spool Manager that allows you to change the Default Spool Directory, set timers, and select the default font for the Spool Manager window.

## Orientation

A setting on the Paper menu that allows you to choose the orientation of print on your printout: **Portrait** or **Landscape**. In portrait orientation, the top of the page is parallel with the short edge of the paper. Landscape images are printed with the top of the page parallel to the long edge of the paper. The Landscape option is ideal for printing wide spreadsheets. The default setting is **Portrait**.

## Paper menu

This menu provides settings that control or affect how paper is used in the printing process. See the following for more details about the settings available on this menu: **Paper Size**, **Paper Source**, **Copies**, **Collate**, **Reverse Order**, **Orientation**, **Printable Area**, and the **paper settings display**.

## **Paper settings display**

The image on the left side of the Paper menu changes to reflect several of the settings you make on the Paper menu.



## **Paper Size**

A Paper menu setting used to specify the size of the paper loaded in your printer.

## **Paper Source**

The EPSON Stylus COLOR series printers have built-in sheet feeders, so you do not need to change the Paper Source setting.

## **Photo Quality Glossy Film**

Special coated film for ink jet printers that gives you the best image quality.

## **Photo Quality Glossy Paper**

Special coated paper for ink jet printers that gives you the best picture quality.

## Photo Quality Ink Jet Paper

Special coated paper used for very high quality printing at 720 dpi. Use this paper in **Fine - 720 dpi** mode when you print your most important work.

## Portrait

An Orientation setting on the Paper menu that produces a document where the top and bottom edges are shorter than the sides. This is the most common orientation setting and is selected by default.

## **Predefined settings**

Predefined settings are groups of settings that are provided for specific purposes. These settings can be found by clicking the Advanced button and clicking anywhere in the Advanced settings list on the Main menu.

## **Printer driver**

A printer driver is software that runs, or "drives," your printer.



## **Print Head Alignment utility**

Aligns the print heads to print images clearly. Use this if you find that your printed image is fuzzy or vertical or horizontal lines in your printout are not properly aligned.

This utility includes both black and color alignment features.

## **Print Quality**

The available Print Quality settings are: Fine - 720 dpi, Normal - 360 dpi, and Economy.

## Queue(s)

A queue is a list of journal files that are currently printing or waiting to be printed. Queues are always associated with a local or remote (across a network) print device.

The EPSON Spool Manager displays your printer name and the associated queue. It also displays an icon representing your print device. The Spool Manager places a wait symbol on the appropriate printer icon when the queue is on hold or paused. You can hold a queue using the **Hold** command on the Queue menu.

## **Queue menu (Spool Manager)**

A drop-down menu in the Spool Manager that allows you to place the selected queue on hold, allows you to release a held queue so that its journal files are printed, and identifies if a queue is local or remote.

## **Release time**

The time it takes to regain control of your application after you send a print job to the printer. The EPSON Stylus Series printing system quickly processes the print job and then releases your application so that you can continue working while your printer is printing.

## Releasing a queue

To release the journal files you placed on hold and cause the printer to print them, turn off the Hold option on the **Queue Menu** in the Spool Manager.

## **Reverse Order**

A Paper menu option that allows you to print your multi-page document from the last page to the first. If you select Reverse Order, your document will be in normal reading order when it is finished printing. When Reverse Order is off (the default setting), your document is printed in order from the first page to the last.

## Spool Manager

The Spool Manager is software used by the printer driver to facilitate printing. When you print a document from your application, the printer driver use the Spool Manager to send the data to the Despooler and then to the printer. This releases your computer quickly so that you can continue using your application and allows printing to take place in the background.



## **SuperFine - 1440 dpi (Print Quality option)**

A Print Quality setting that produces photographic-quality output at a slower speed and at 1440 dpi resolution. Select this setting for your most important work. SuperFine - 1440 dpi works best when used with special media such as glossy paper, glossy film, and ink jet paper.

You can use SuperFine - 1440 dpi for Black or Color printing.

## **Timers option (Spool Manager)**

An option on the Option menu in the Spool Manager that allows you to set two timers: the Update Timer and the Remote Timer.

The Update Timer tells the Spool Manager how often to refresh the information it displays.

The Remote Timer tells a remote Spool Manager how often to look for new journal files in a network directory.

## **Transparencies**

Specially prepared transparency film for use on overhead projectors. We recommended the use EPSON transparency film that is specifically designed for use with ink jet printers.

## **Utility menu**

This menu provides utilities that give you printer status information and help you maintain your printer. See the following for more details about the utilities available on this menu: Print Head Alignment, Head Cleaning, Nozzle Check, and EPSON Status Monitor.

## PhotoEnhance

This setting is best for printing images captured using a video, digital camera, or scanner. EPSON PhotoEnhance feature produces sharper images and more vivid colors by automatically adjusting the contrast, saturation, and brightness of the original image data.

**Note:** *Selecting PhotoEnhance automatically sets the Ink option to Color. Changing the Ink setting after PhotoEnhance is selected returns the settings list to Custom Settings.*

*Printing with PhotoEnhance selected may take longer depending on your computer system and the amount of data contained in your image.*

## **View menu (Spool Manager)**

A drop-down menu in the Spool Manager that allows you to select the information displayed by that the Spool Manager. Using this menu, you can also choose to keep the Despooler from appearing when you print.

## **Windows GDI**

Graphics Device Interface (GDI). The part of the Microsoft Windows environment that allows programmers to draw lines, circles, polygons, and text and control other graphics elements on the output device (for example the screen, printer, or plotter, and so on).

## **WYSIWYG**

What You See Is What You Get. Generally with the EPSON Stylus series printing system, what you see on the screen is what you get in your printout in terms of colors, image size, and print density.



## Contents

[Quick Guide to Using Help](#)

[Driver Settings](#)

[Printing Procedures](#)

[Spool Manager, Despooler, and Status Monitor](#)

[Printing Supplies](#)

[Copyright and Trademark Information](#)

## Printing Supplies

### EPSON Special Media list

|  |                         |
|--|-------------------------|
| EPSON Special coated paper dpi for 360 printing (A4)     | <b>S041059, S041025</b> |
| EPSON 360 dpi Ink Jet Paper (A4)                         | <b>S041059, S041025</b> |
| EPSON Special coated paper for 360 dpi printing (Letter) | <b>S041060</b>          |
| EPSON 360 dpi Ink Jet Paper (Letter)                     | <b>S041060</b>          |
| <br>   |                         |
| EPSON Special coated paper for 720 dpi printing (A4)     | <b>S041061, S041026</b> |
| EPSON Photo Quality Ink Jet Paper (A4)                   | <b>S041061, S041026</b> |
| EPSON Special coated paper for 720 dpi (Letter)          | <b>S041062</b>          |
| EPSON Photo Quality Ink Jet Paper (Letter)               | <b>S041062</b>          |
| EPSON Special coated paper for 720 dpi printing (Legal)  | <b>S041067, S041048</b> |
| EPSON Photo Quality Ink Jet Paper (Legal)                | <b>S041067, S041048</b> |
| <br>   |                         |
| High Quality Glossy Paper (A4)                           | <b>S041071</b>          |
| EPSON Photo Quality Glossy Film (A4)                     | <b>S041071</b>          |
| High Quality Glossy Paper (Letter)                       | <b>S041072</b>          |
| EPSON Photo Quality Glossy Film (Letter)                 | <b>S041072</b>          |
| EPSON Photo Quality Glossy Film (A6)                     | <b>S041107</b>          |
| <br>   |                         |
| EPSON Photo Quality Glossy Paper(A4)                     | <b>S041126</b>          |
| EPSON Photo Quality Glossy Paper(Letter)                 | <b>S041124</b>          |
| <br>   |                         |
| Transparency Film (A4)                                   | <b>S041063</b>          |
| EPSON Ink Jet Transparencies (A4)                        | <b>S041063</b>          |
| Transparency Film (Letter)                               | <b>S041064</b>          |
| EPSON Ink Jet Transparencies (Letter)                    | <b>S041064</b>          |
| <br>   |                         |
| Special coated index cards for 720 dpi (A6)              | <b>S041054</b>          |
| EPSON Photo Quality Ink Jet Cards (A6)                   | <b>S041054</b>          |
| EPSON Photo Quality Ink Jet Cards (5 X 8)                | <b>S041121</b>          |
| EPSON Photo Quality Ink Jet Cards (10 X 8)               | <b>S041122</b>          |
| <br>   |                         |
| EPSON Iron-on Transfer Paper(Letter -10 pk. USA only)    | <b>SE41001</b>          |
| EPSON Iron-on Transfer Paper(Letter -10 pk. USA only)    | <b>SE41002</b>          |
| <br>   |                         |
| EPSON Photo Paper 4 X 6 in                               | <b>XXXXX</b>            |

**Note:** The availability of special media varies by country.

**EPSON Ink Cartridge**

Black ink cartridge

**S020093**

Color ink cartridge

**S020110**

