

Adobe Acrobat 6.0 CE is a specific version of Adobe Acrobat, with improved support for Central European languages in the areas of: Search, PDF Forms, Web Capture, TouchUp and Commenting. These specific features for Central European languages are described in the following pages.

This document contains a description of all the features supported in the Standard and Professional versions of Adobe Acrobat CE. Since all features in the Standard are in the Professional version, wherever there is a feature specific to Adobe Acrobat CE Professional, you will find a notification "Acrobat Pro only."

Adobe Acrobat CE provides support for 12 languages namely:

Bulgarian	Lithuanian
Czech	Polish
Estonian	Russian
Greek	Slovak
Hungarian	Turkish
Latvian	Ukrainian

Contents

Searching Adobe PDF Documents	2
Creating Adobe PDF Forms (Acrobat Pro Only)	3
Submitting Forms	
Javascrpts	
Currencies in Forms	
Creating Adobe PDF documents from Web Pages	8
Editing Adobe PDF Documents with TouchUp Text Tool	10
Adding Comments in a Text Box	11

Searching Adobe PDF Documents

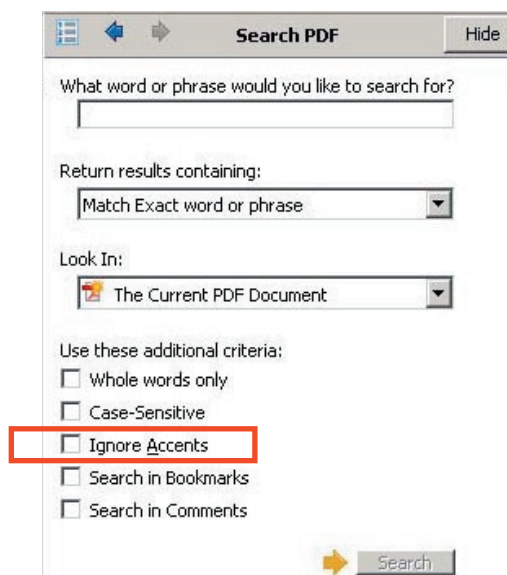
You can search for specific words in the text of an open Adobe PDF document, from within Adobe Acrobat CE. In general, you can search for words in the text, Comments, Bookmarks, document information, form fields, custom fields etc.

You can also conduct a single search across multiple Adobe PDF files, often without even opening the files.

If your Adobe PDF document contains accents, the Search command in Adobe Acrobat 6.0 CE includes an option useful to “ignore the accents” while searching a text string. This capability is available in the User Interface both in “Basic Search” and “Advanced Search” for all sorts of accents such as é, š etc. When checked (the default option), it allows you to search for a string of text whether or not it contains some accents. If the option is unchecked, you must type the exact string -- with accents -- that you are looking for.

The Ignore Accents option also works when you search in Comments such as Bookmarks and Notes.

When searching on multiple PDFs with indexes, the Ignore accents will gray-out as it is not available for searching multiple PDFs in Indexes.



Adobe Acrobat 5 CE shipped with an Index searching utility called textspy. Since Adobe Acrobat 6 CE has inbuilt technology to work with Indexes having CE characters the textspy utility no longer ships. If you used this utility before you will have to re-index such multiple PDF documents with Adobe Acrobat 6 CE for the Index search to work correctly.

Creating Adobe PDF Forms (Acrobat Pro Only)

An Adobe PDF form is an electronic-based form, resembling a traditional paper form, that can collect data from a user and then send that data via email or the Web using Acrobat Professional.

The Form Tool allows you to create form fields that an Acrobat user can interact with.

You create a form field by selecting the Relevant tool for creating your desired Field type (button, text box, drop down, etc.) and defining the area of the field on the PDF document page. For each field type (button, text box, check box, etc.) you can set a variety of options through the Field Properties dialog box that allows you to customize the fields in your PDF forms.

Important Note: Creating CE (Bulgarian, Czech, Estonian, Greek, Hungarian, Latvian, Lithuanian, Polish, Russian, Slovak, Turkish, Ukrainian) PDF Forms requires Adobe Acrobat 6.0 CE Professional. But for filling in forms you can use Adobe Reader CE, Adobe Acrobat CE Standard/Professional.

To use Central European text in Form fields, you can choose one of the following fonts:

MinionPro-Regular

MyriadPro-Regular

MinionPro-Italic

MyriadPro-Italic

MinionPro-Bold

MyriadPro-Bold

MinionPro-BoldItalic

MyriadPro-BoldItalic

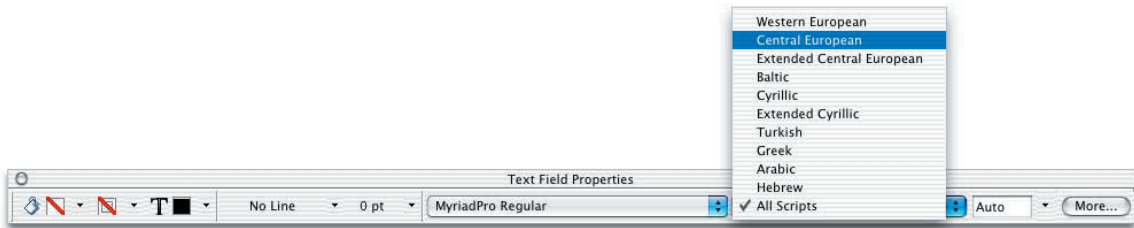
These fonts are installed with Adobe Acrobat 6.0 CE so that they are always available, and they have been designed to look and print exactly the same on the Macintosh and Windows platforms.

To help in optimizing the file size of your PDF form Adobe Acrobat CE provides an option to control the glyphs* that will be embedded in the PDF form. Thus, depending upon the language you want in your form field Adobe Acrobat CE allows you to select a language subset from the following List:

Language Subset	For use with the following languages
Western European	English
Baltic	Estonian, Latvian, Lithuanian
Central European	Czech, Hungarian, Polish, Slovak
Extended Central European	Czech, Hungarian, Polish, Slovak, Albanian, Croatian, Slovenian, Romanian, Maltese, All Latin
Cyrillic	Bulgarian, Russian, Ukrainian
Extended Cyrillic	Bulgarian, Russian, Ukrainian, Serbian, Byelorussian, Macedonian, All Extended Cyrillic characters
Greek	Basic Greek and Polytonic, Ancient, Coptic
Turkish	Turkish
All Scripts	

*A glyph is a representation of a character. The character "A" is represented by the glyph "A" in Times New Roman Bold. Glyphs and characters do not strictly correspond one-to-one. For example a user might type two characters, which might be better represented with a single ligature glyph. A font is a collection of glyphs.

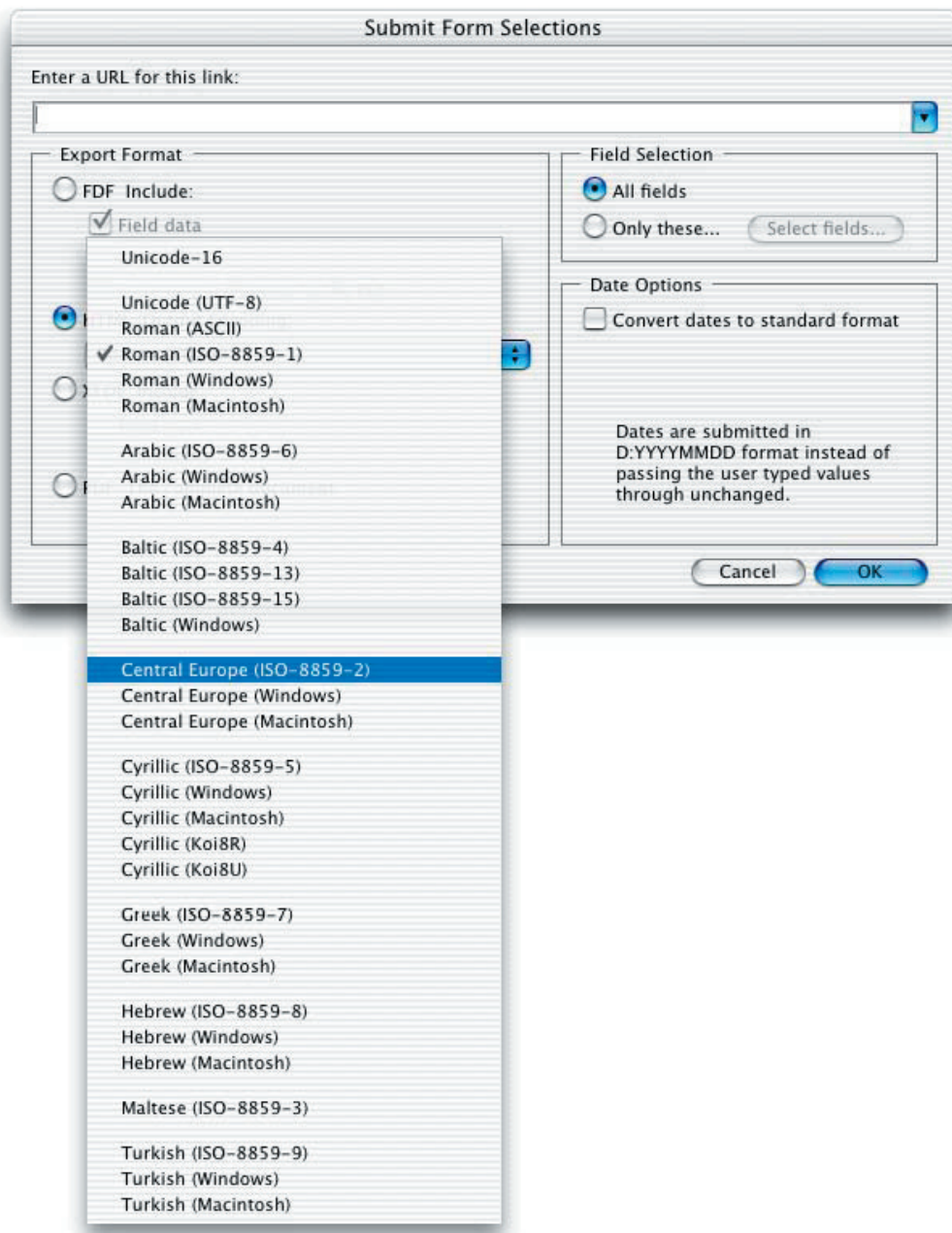
Please note that using the “All Scripts” option can increase the file size significantly. The UI for Language Subsets is shown below.



Available Language Subsets

Submitting Forms

When Specifying a method to Submit your PDF form, you can choose to send it to an URL in HTML format, Adobe Acrobat CE allows you to specify the Output Conversion Encoding to the appropriate Encoding.



The output encodings available are:

Unicode 16	Baltic ISO-88594
Baltic Windows	Central European ISO-88592
Central European Windows	Central European Macintosh
Cyrillic ISO-88595	Cyrillic Windows
Cyrillic Macintosh	Cyrillic KOIU
Cyrillic KOIR	Greek ISO-88597
Greek Windows	Greek Macintosh
Roman ASCII	Roman ISO-88591
Roman Windows	Roman Macintosh
Turkish ISO-88599	Turkish Windows
Turkish Macintosh	8859-3 (Maltese)
8859-13 (Latvian-Lithuanian)	8859-15 (Estonian)

Javascripts

The most common uses for JavaScript in Acrobat forms are formatting data, calculating data, validating data, and assigning actions.

For information on JavaScripts, please read the information available in: **Complete Acrobat 6.0 Help...** under the Help menu.

Adobe Acrobat 6.0 CE JavaScript has been adapted to allow you to change the Central-European text font within javascripts using **textFont** property .

textFont

Type: String Fields: Text, Combo, List & Button Access: R/ W.

The **textFont** property determines the font that is used when laying out text in a text field, combo box, list box or button. Valid Central European fonts are defined as properties of the “font” object as follows:

Font	Keyword
MinionPro-Regular	font.MyrProRg
MinionPro-Italic	font.MyrProIt
MinionPro-Bold	font.MyrProBd
MinionPro-BoldItalic	font.MyrProBdIt
MyriadPro-Regular	font.MinProRg
MyriadPro-Italic	font.MinProIt
MyriadPro-Bold	font.MinProB
MyriadPro-BoldItalic	font.MinProBdIt

Adobe Acrobat 6.0 CE JavaScript has a new property matching the ability of selecting a script : **fontSubset**

fontSubset

Type: String Fields: Text, Combo, List & Button Access: R/ W.

The **fontSubset** property determines the script that is used when laying out text in a text field, combo box, list box or button. Valid CE scripts are defined as properties of the “subset” object as follows:

Script	Keyword
Western European	subset.Roman
Central European	subset.EastEuropean

Extended Central European	subset.ExtEastEuropean
Cyrillic	subset.Cyrillic
Extended Cyrillic	subset.ExtCyrillic
Greek	subset.Greek
Turkish	subset.Turkish
AllScripts	subset.All

Adobe Acrobat 6.0 CE JavaScript has a new property matching the ability of selecting an HTML output encoding when using object method **SubmitForm: htmlEnc**

Parameters: cURL, [htmlEnc], [bFDF], [bEmpty], [aFields], [bGet], [bAnnotations], [bXML], [bIncrChanges], [bPDF], [bCanonical], [bExclNonUserAnnots], bExclFKey], [cPassword]

Returns: Nothing

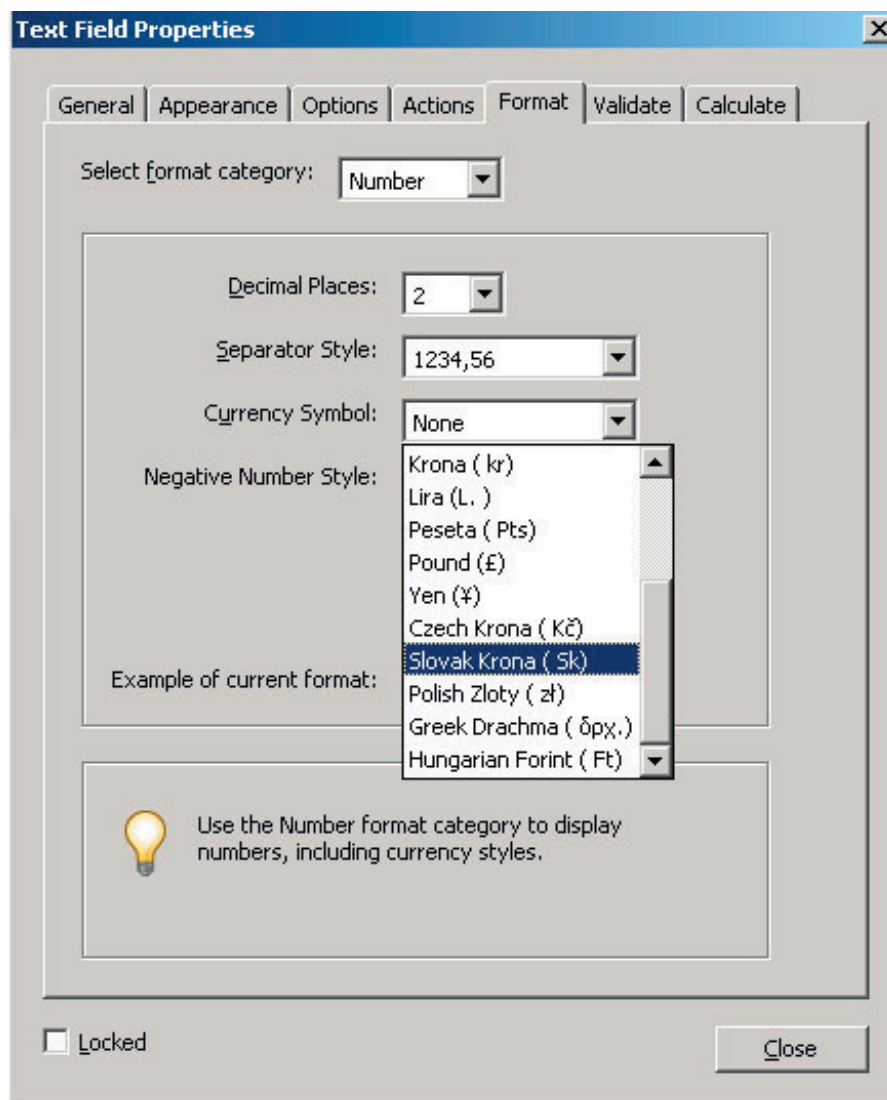
The optional **htmlEnc** parameter is an integer that indicates which output encoding is used to submit the HTML. If not set or set to 0, the form fields are encoded as Uni-code.

Output Encoding	Value
Unicode 16	0
Baltic ISO-88594	88594
Baltic Windows	1257
Central European ISO-88592	88592
Central European Windows	1250
Central European Macintosh	10029
Cyrillic ISO-88595	88595
Cyrillic Windows	1251
Cyrillic Macintosh	10007
Cyrillic KOIU	21866
Cyrillic KOIR	20866
Greek ISO-88597	88597
Greek Windows	1253
Greek Macintosh	10006
Turkish ISO-88599	88599
Turkish Windows	1254
Turkish Macintosh	10081
Maltese ISO-88593	88593
Latvian-Lithuanian ISO-885913	885913
Estonian ISO-885915	885913

Currencies in Forms

Adobe Acrobat CE allows you to use CE currencies in PDF Forms. You have access to currencies of CE countries like Bulgaria, Hungary, Romania, etc.

You can access these currencies in the Text Field Properties dialog box as show below:

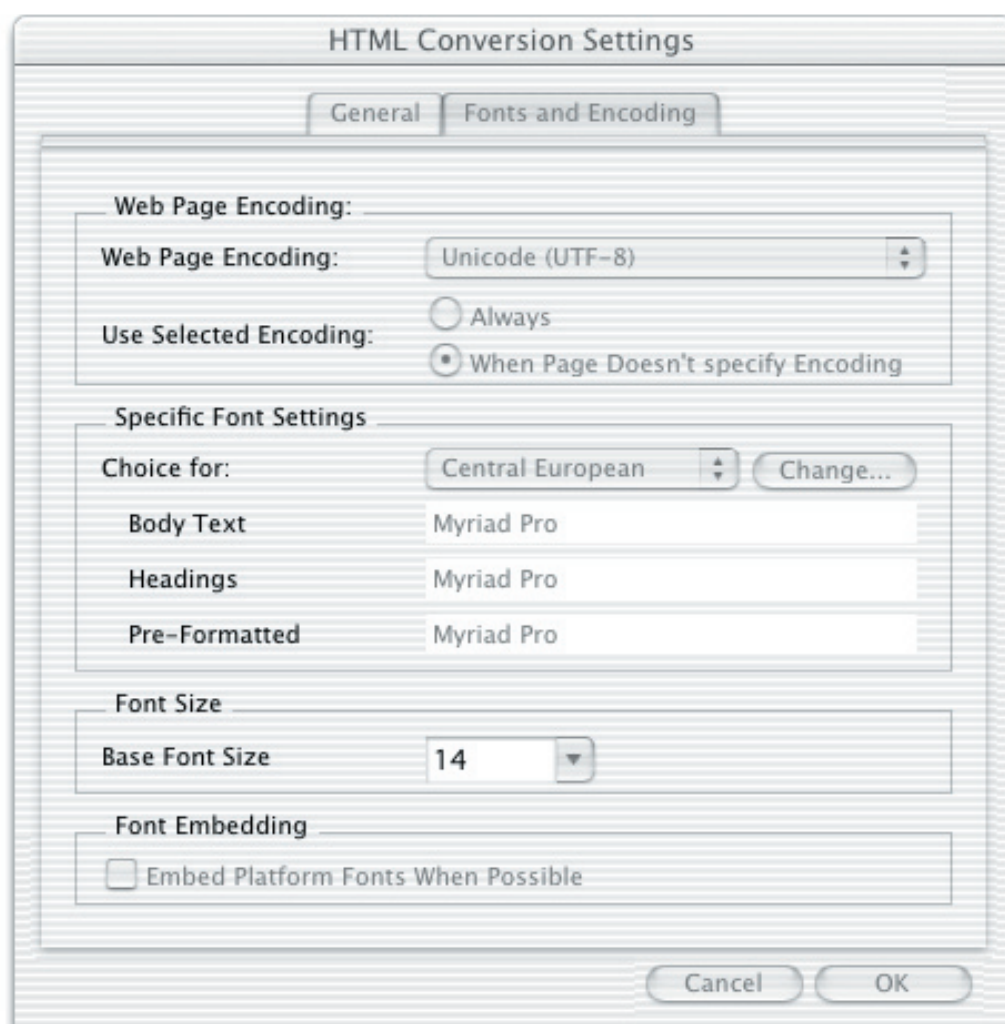


Creating Adobe PDF documents from Web Pages

Adobe Acrobat CE allows you to open web pages within the application and then save them in PDF format.

To Open a web page in Adobe Acrobat CE or append a web page to an existing PDF document use the “Open Web Page” or “Append Web Page” commands in the Advanced>WebCapture menu. Please type here the URL of the web page you are trying to access. The default URL is www.adobece.com.

When you save a web page to PDF you can decide the encoding options for different type of content like HTML data or Text etc. For example for HTML data you need to select the “HTML file type Setting” on the General tab and then press the “Settings” button. Here on the Fonts and Encoding page you can set your own preferences as shown in the picture below:



HTML Conversion Settings Dialog Box for converting Web Pages to PDF

Some terms in the above picture are explained here:

“Always” -- This will ensure that the encoding you choose will always be applied irrespective of the one defined in the HTML code of the web page you are converting to PDF.

“When Page doesn't specify encoding” -- Using this option will ensure that your preferred encoding would be used if the HTML code of the web page does not specify

[Go To Contents Page](#)

anything.

“Specific Font Settings”: Here you can set your preferences for the font that is used for different parts of the document depending upon the language subgroup you choose.

The Web page encodings available for your use in Adobe Acrobat CE are as follows:

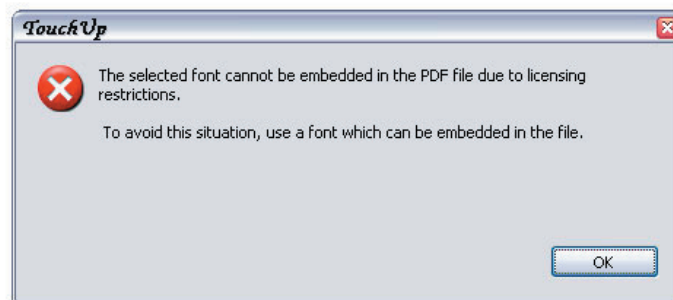
Unicode 8	Baltic ISO-88594
Baltic Windows	Central European ISO-88592
Central European Windows	Central European Macintosh
Central European DOS	Cyrillic ISO-88595
Cyrillic Windows	Cyrillic Macintosh
Cyrillic KOIU	Cyrillic KOIR
Cyrillic DOS	Greek ISO-88597
Greek Windows	Greek Macintosh
Western European ASCII	Western European ISO-88591
Western European Windows	Western European Macintosh
Turkish ISO-88599	Turkish Windows
Turkish Macintosh	88593 (Maltese)
885913 (Latvian-Lithuanian)	8859-15 (Estonian)

Editing Adobe PDF Documents with TouchUp Text Tool

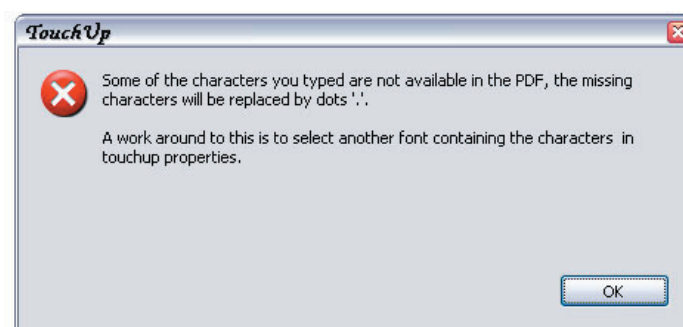
Although Adobe PDF documents are maximized for document distribution you can do limited editing in a PDF document (e.g. correct a misspelled word or over write some text). Remember that Acrobat is not an authoring application. If you need to make extensive changes to a document, it is best either to edit the source file or, if the source file isn't available, to convert the PDF document to .rtf, .doc, or another format for editing.

In order to edit text in a PDF document, the font used in the document must be either embedded in the document or present on your system and embeddable. When you try to type-in a character or a glyph* in a PDF document which has the correctly embedded font you can type as usual.

While using the TouchUp tool if you select a font that is not embeddable and try to close the dialog box you will see the following message:



If the Glyph is not available in the PDF or it is also not available in a new selected font you will get a Pop-up message as shown below and the missing characters will be replaced by dots.



Adding Comments in a Text Box

A comment refers to a note, highlighting, and any other mark up that you've added to an Adobe PDF document using the commenting tools.

You can create a text box comment on any page in an Adobe PDF document and position it anywhere on the page. A text box comment remains visible on the document page; it does not close like a note comment.

The Text Box tool lets you create a box with text in it. When you click a text box to select it, you can use the options on the Properties tool bar to format the fill and border of the text box. When you double-click a text box, you can use the options on the Properties tool bar to format the text inside the text box.

Adobe Acrobat CE installs some fonts on your System so that your comments in the Text Box work optimally. The names and styles of the actual fonts installed are:

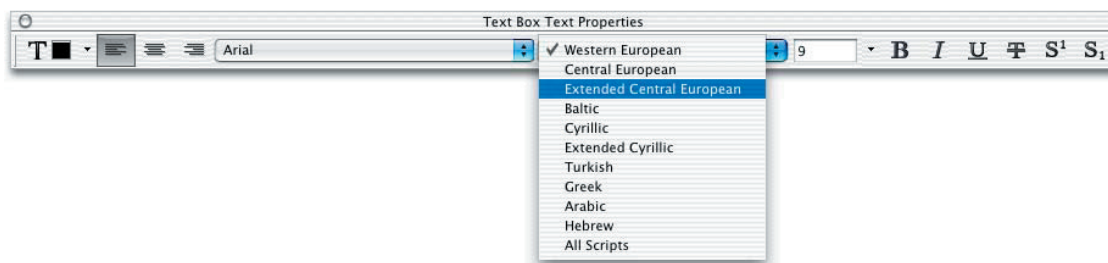
- Minion Pro-Regular, Italic, Bold, Bold Italic
- Myriad Pro-Regular, Italic, Bold, Bold Italic

These fonts cover all CE and Roman glyphs.

Besides this Adobe Acrobat CE allows you to select a language subset from the following List:

- **Western European**
- **Baltic** (Estonian, Latvian, Lithuanian)
- **Central European** (Czech, Hungarian, Polish, Slovak)
- **Extended Central European** (Czech, Hungarian, Polish, Slovak, Albanian, Croatian, Slovenian, Romanian, Maltese, All Latin)
- **Cyrillic** (Bulgarian, Russian, Ukrainian)
- **Extended Cyrillic** (Bulgarian, Russian, Ukrainian, Serbian, Byelorussian, Macedonian, All Extended Cyrillic characters)
- **Greek** (Basic Greek and Polytonic, Ancient, Coptic)
- **Turkish** (Turkish)
- **All Scripts**

By selecting a language subset you will make sure that Adobe Acrobat CE embeds only a subset of glyphs which are required by the language you are working with. This will make sure that the size of your PDF document remains optimum.



Language Subset Settings you can choose from for Optimum file size