

Company Finance Report

Title

Introduction

- ☐ Briefly introduce yourself and your company

Contents

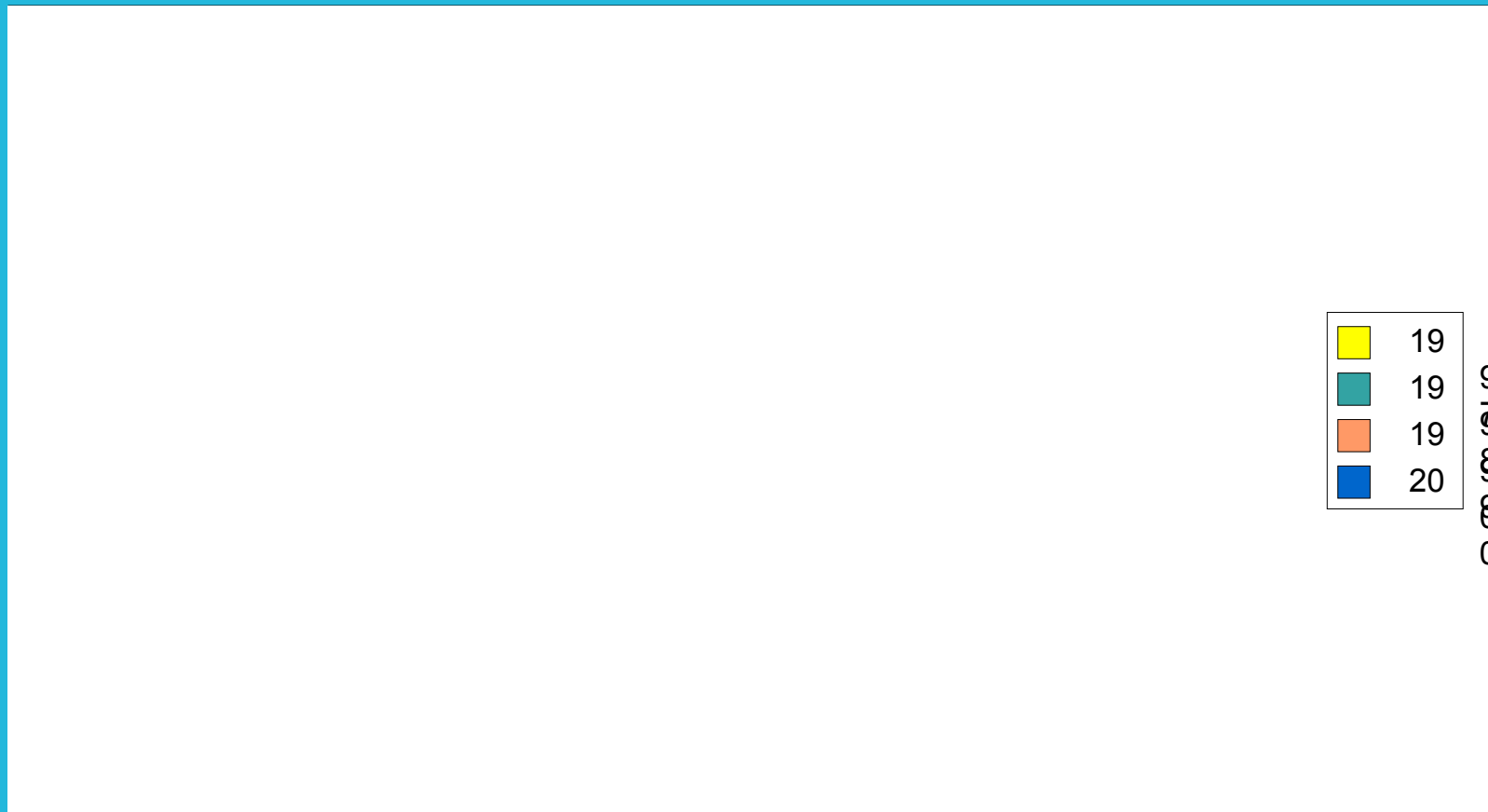
- ☐ Figures
- ☐ Revenues
- ☐ Fields of Business
- ☐ Balance sheet
- ☐ Branch Offices
- ☐ Share development

Figures

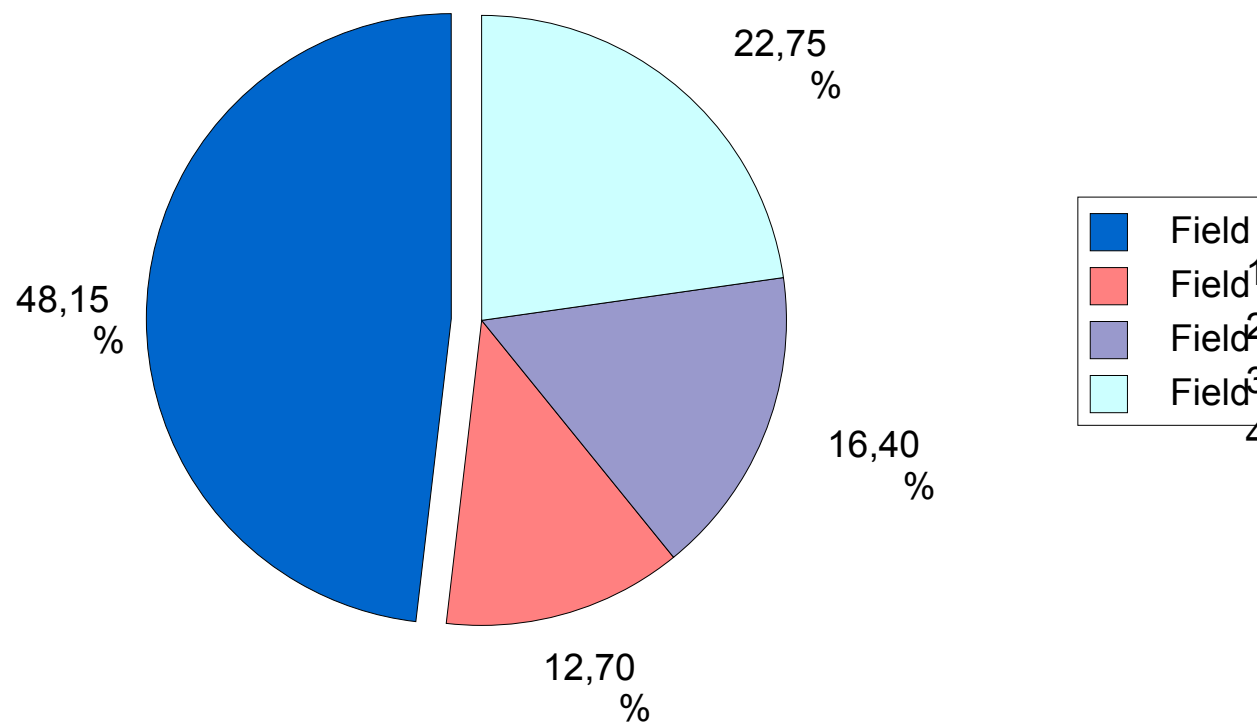
	1999	2000
Sales	\$1,234,567,900.00	\$1,234,567,900.00
Profit	\$123,456,790.00	\$123,456,790.00
Income per share	\$0,003.40	\$0,004.00
Investments	\$12,345,678.00	\$12,345,678.00
Assets	\$1,234,567,900.00	\$1,234,567,900.00

Revenues

Give a short statement about company revenues



Revenue by Field



Balance sheet

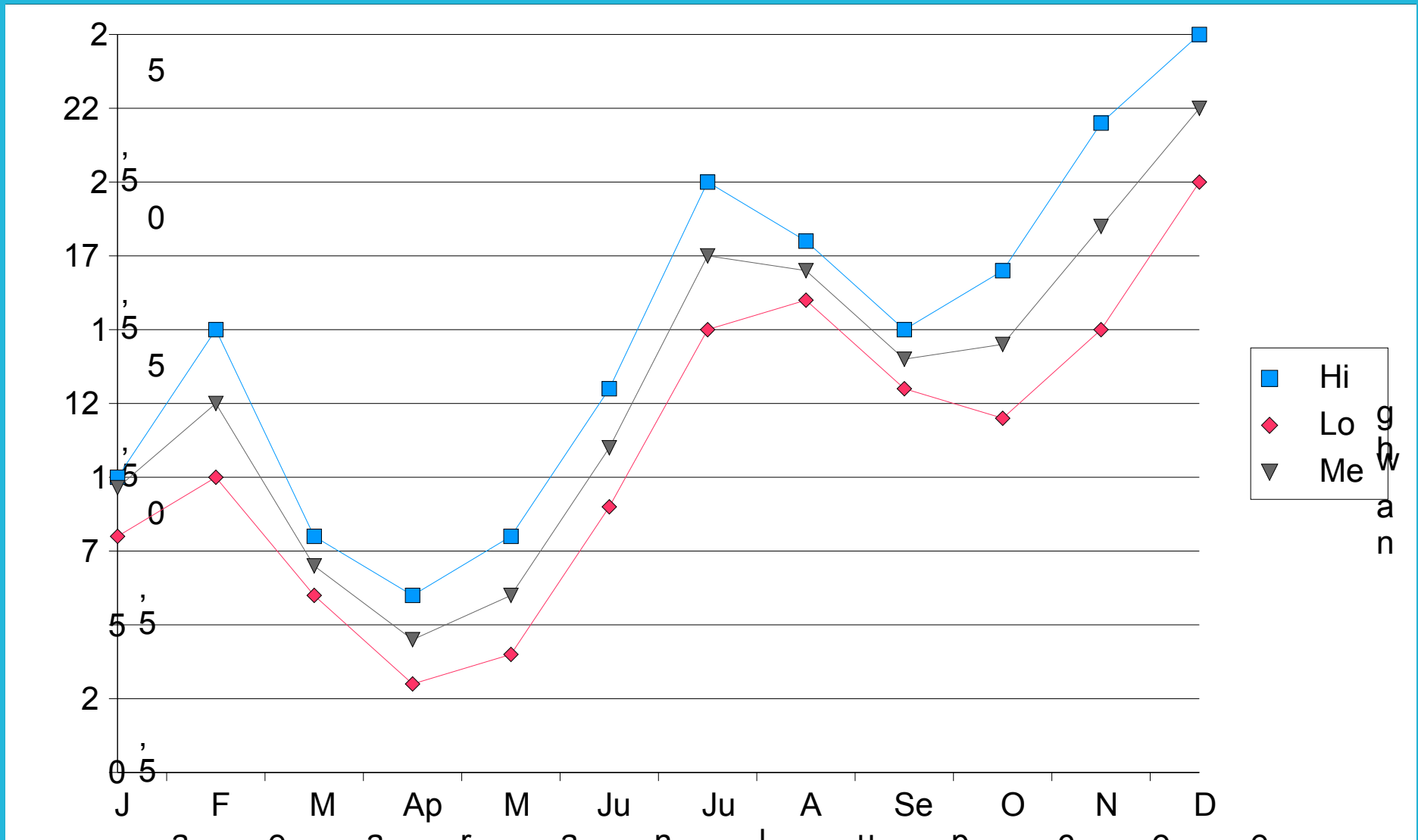
	1999	2000
Assets (total)	\$1,234,567,900.00	\$1,234,567,900.00
Fixed assets	\$123,456,790.00	\$123,456,790.00
Current assets	\$1,111,111,100.00	\$1,111,111,100.00
Liabilities (total)	\$123,456,790.00	\$123,456,790.00
Equity	\$12,345,678.00	\$12,345,678.00
Borrowings	\$111,111,110.00	\$111,111,110.00

Branch Offices

- Briefly describe what share each branch makes up of the total result



Share development



End

☐ Judge the current situation

☐ Look to the future