

PopRoute 1.05

=====

9 May 1999

ORNIC Technologies, Inc.

<http://www.ornic.com>

[info@ornic.com](mailto:info@ornic.com)

#### 1. description

=====

PopRoute picks up emails from POP3 accounts and routes them to MS Exchange Server mailboxes.

#### 2. installation

=====

Run poproute105.exe and expand files to selected folder (e.g. c:\program files\poproute).

#### 3. uninstallation

=====

Remove all files and folders in poproute folder (e.g. c:\program files\poproute).

#### 4. configuration

=====

Edit text file poproute.dat in bin subdirectory (do not type red text to the configuration file):

[General]

MS Exchange Server=ORNICNT01

NT server where you run  
MS Exchange Server

Queue Directory=c:\program files\poproute\queue

Folder where PopRoute  
will store downloaded  
emails

Archive Directory=c:\program files\poproute\archive

Folder where PopRoute  
will archive downloaded  
emails

Log Directory=c:\program files\poproute\logs

Folder where PopRoute  
will save log files

[Mailbox1]

account=john

password=johns\_password

server=pop.yourserver.com

[routeto=johns\\_mailbox@exchange\\_domain.com](mailto:routeto=johns_mailbox@exchange_domain.com)

POP3 account's name  
POP3 account's password  
POP3 server  
email address where  
PopRoute will route  
downloaded emails from  
this account

[Mailbox2]

Definition of another  
POP3 accounts for routing  
to MS Exchange Server

...

[Mailbox3]

...

...

...

...

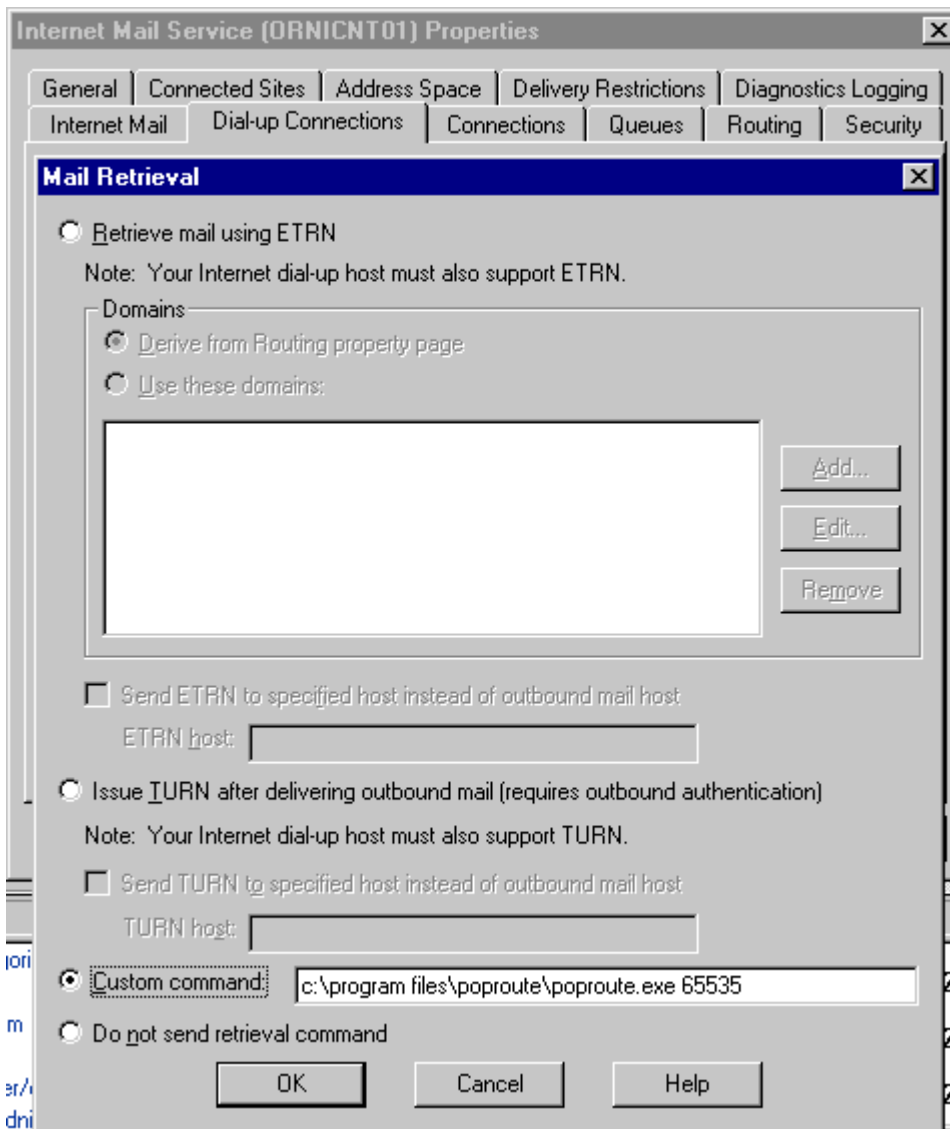
[Mailbox12]

...

#### 5. setting ms exchange server

=====

Run MS Exchange Server Administrator, go to "internet mail service properties" (under connections), select "dial-up connection" tab and press "mail retrieval" button.



Select "Custom command" radio button and to the edit box type poproute.exe command including the whole path. As a parameter you can set maximum size of one email that PopRoute will download from POP3 account.

Now PopRoute will retrieve your emails automatically whenever you will dial-up your ISP for sending emails or generally whenever you will be online.

You can also run PopRoute manually from command line. This is useful e.g. if you set the limit size for downloaded emails in Internet Mail Service Properties.

#### 6. license

=====

PopRoute.  
Copyright (c)

PopRoute License Policy:

ORNIC TECHNOLOGIES, INC. DISCLAIMS ALL WARRANTIES RELATING TO THIS SOFTWARE, WHETHER EXPRESS OR IMPLIED, INCLUDING BUT NOT LIMITED TO ANY IMPLIED WARRANTIES OF MERCHANTABILITY AND FITNESS FOR A PARTICULAR PURPOSE, AND ALL SUCH WARRANTIES ARE EXPRESSLY and SPECIFICALLY DISCLAIMED.

PopRoute is a freeware product and its use in a personal, business, commercial, government, or institutional environment doesn't require registration.

We ask that users share PopRoute with a friend and recommend it to others if they like it.

WHILE POPROUTE IS FREELY AVAILABLE, WE HAPPILY ACCEPT ANY DONATION.

ORNIC Technologies, Inc.  
<http://www.ornic.com>  
[info@ornic.com](mailto:info@ornic.com)