

MrSID

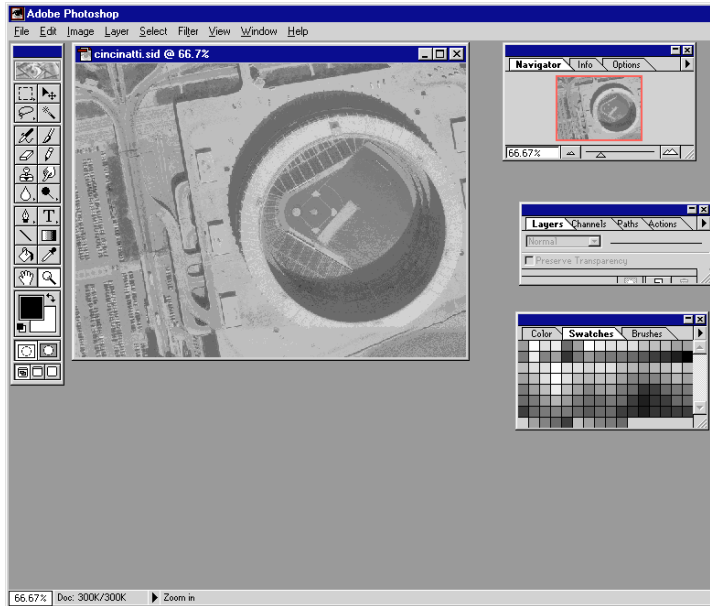


WHAT IS
MRSID?

MrSID Photoshop® Plug-in for Windows 95/NT4.0

Introducing MrSID

MrSID image compression and decompression software offers users high-quality image-compression capabilities, along with the ability to view images quickly and easily on multiple platforms, or over the Internet. MrSID compression software takes images of virtually any size and compresses them into easily-manageable image files; the MrSID viewing products allow users to view, navigate, export, and print MrSID files. With the MrSID Image Server, highly-detailed imagery, with file sizes from megabytes to terrabytes, can be viewed quickly over the Internet.



*High resolution
MrSID image viewed
in Adobe Photoshop*

Introducing The MrSID Photoshop Plug-ins

The MrSID Photoshop Plug-ins gives you the ability to view and manipulate MrSID image files within Adobe Photoshop. With the Plug-in Lite, Photoshop users can select and open .sid images just like any other image format. The MrSID Plug-in Lite allows .sid files to be scripted using Photoshop's Actions menu.

When using the full version of the MrSID Plug-in, users are shown a thumbnail view of the selected .sid image, and are then allowed to select a specific section of the image at a specified zoom level and print resolution. Once selected, this section of the image is imported into Photoshop. The image can be manipulated, cropped, and color-adjusted in Photoshop; it can then be saved in any of the file formats Photoshop supports.

WHAT ARE THE
MRSID
PHOTOSHOP
PLUG-INS?





CONTENTS

SYSTEM
REQUIREMENTS

USING THE
MRSID PLUG-IN

Contents

- System requirements
- Installing the MrSID Photoshop Plug-in
- Opening MrSID images in Photoshop
- Contacting technical support

System Requirements

Typical compression of a MrSID file ranges from 20:1 to as high as 50:1 or more. This means that a one megabyte MrSID file, decompressed into Photoshop, will become a 20 to 50 megabyte image. Adobe's technical support indicates that Photoshop needs 3-5 times the decompressed file size, in hard drive and/or RAM space, to open an image; this means that a one megabyte MrSID image, fully decompressed, can occupy 60 to 250 megabytes of available hard drive and/or RAM space. Before you import this large of an image into Photoshop, be sure you have enough available space on your system. On most systems, and with most MrSID images, it is best not to import an entire image, but rather a portion of the image, into Photoshop.

In addition, Photoshop has an image-size limitation of 30,000 by 30,000 pixels, or around 8 gigabytes. This is a fairly average size for a MrSID image.

Using the MrSID Photoshop Plug-in Lite

If both MrSID Photoshop Plug-ins are placed in your Photoshop Plug-ins folder, only the regular MrSID Plug-in will be operational.

In order to use the MrSID Plug-in Lite, you must remove the regular version of the Plug-in from your Photoshop Plug-ins folder. It can be stored temporarily in any location you choose.

See MrSID Plug-in Lite documentation for more information.

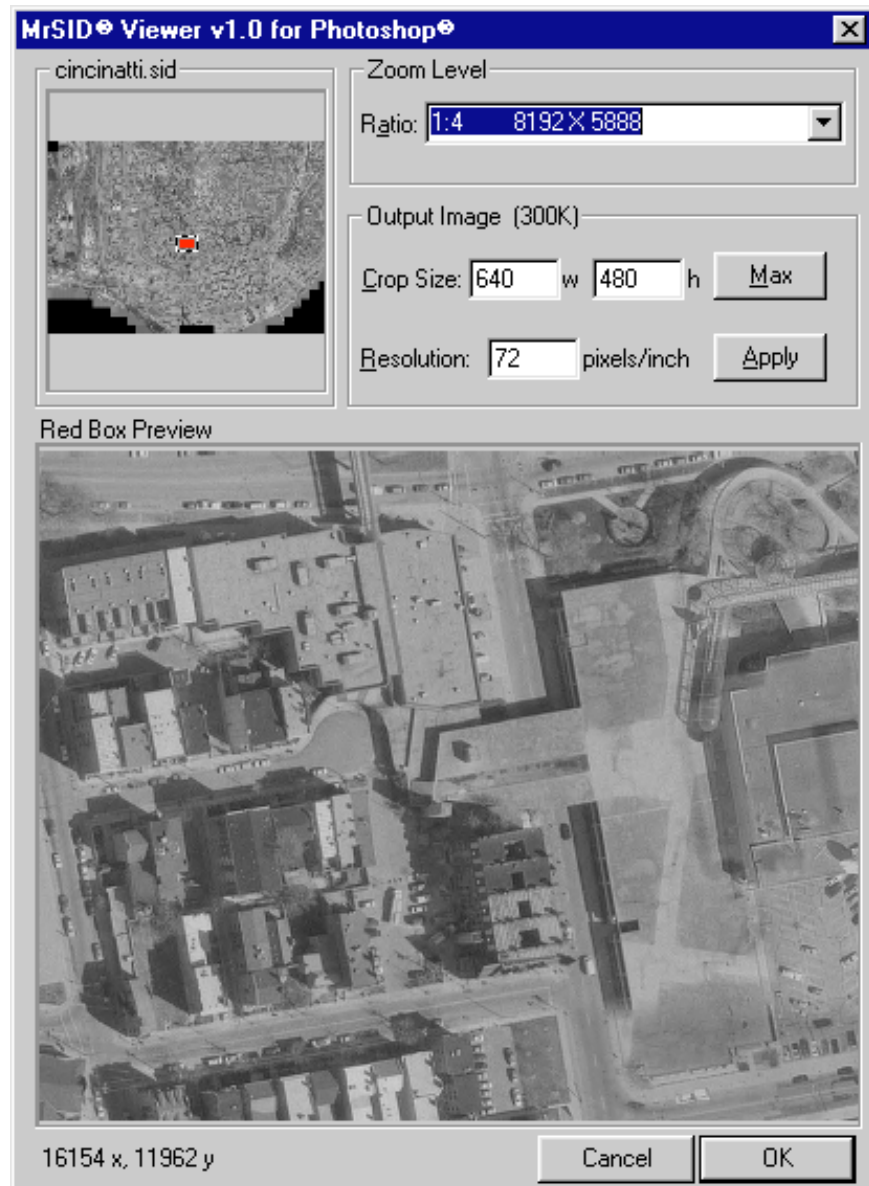




OPENING MRSID
FILES IN
PHOTOSHOP

Opening MrSID files in Photoshop

Select "Open" under the "File" menu in Photoshop. Navigate through your system to the .sid file you wish to open; select it, and click "Open." This will bring up the MrSID Plug-in Viewer window.



The initial view shows a small section of your image at a 1:4 zoom ratio. The default print resolution is Photoshop's default of 72 dpi.





THE MRSID
PLUG-IN VIEWER
WINDOW

THE THUMBNAIL
WINDOW

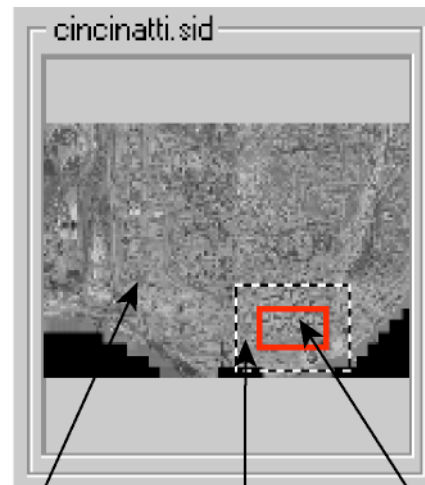
The MrSID Plug-in Viewer Window

The MrSID Plug-in Viewer Window consists of five main sections:

- The Thumbnail window
- The Zoom Level pull-down menu
- The output image dialogue box
- The Red Box preview window
- The cursor pixel location display

The Thumbnail Window

The Thumbnail Window gives a preview of both the full .sid image, the area of the image to be cropped for actual use in Photoshop, and the area of the image displayed in the "Red Box Preview" window.



*Thumbnail view
of the full MrSID
image*

*Dashed-line
box: area to be
cropped and
imported into
Photoshop*

*Red-line box:
area displayed in
main Red Box
Preview window*

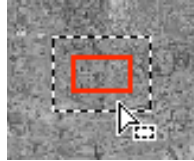




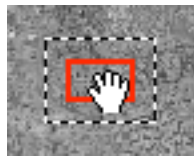
CHANGING THE VIEW AND CROP AREAS WITH THE CROP- AND RED-LINE BOXES

Changing the View and Crop Areas

There are two distinct boxes displayed within the thumbnail image: a dashed-line "Crop Box," and a red-line "View Box."



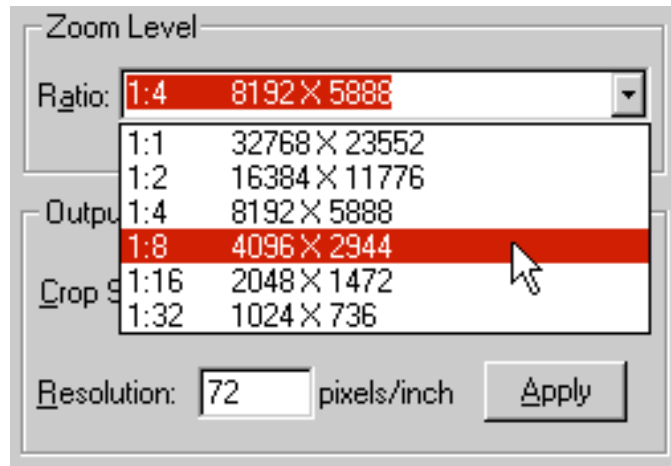
The Crop Box delineates the area to be cropped and imported into Photoshop. The size of this box is adjusted using either the zoom-ratio pull-down menu (page 6), or by altering the crop-size field in the Output Image dialogue box (page 7). To move the Crop Box, position the cursor above it; the cursor will change to an arrowhead. You can click-and-drag the Crop Box to the area of the thumbnail image you wish to import into Photoshop. As you move the Crop Box, the View Box moves with it.



The View Box delineates the area displayed in the main MrSID Viewer window. You can move the view box independent of the Crop Box, in order to navigate your image and select an area to import. To move the View Box, position the cursor above it; the cursor will be changed into a gloved hand. Click-and-drag to "grab" the View Box and move it around your image; the image contained in the View Box will change to show the new location.



The Zoom-level Pull-down Menu

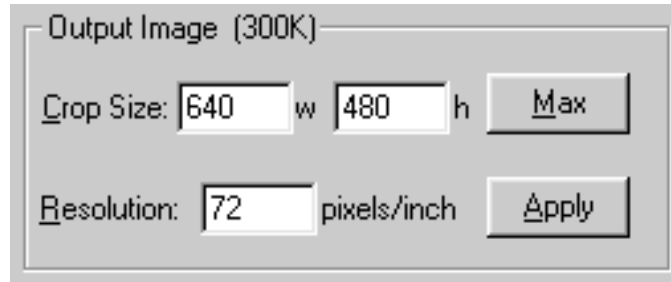


*The Zoom Level
pull-down menu*

To change the zoom ratio of your image, use the pull-down menu in the Viewer window. You can select any of the zoom levels available in the MrSID image. Once you've selected a zoom level, the main Viewer window, as well as the crop- and red-box displays, will adjust to reflect the new zoom ratio. The "Output image" file-size display will also adjust to reflect zoom-level changes.



The Output Image Dialogue Box



*The Output Image
Dialogue Box*

The size of the final image to be imported into Photoshop (the area specified by the dashed-line box in the thumbnail image) can be adjusted manually by altering the “Crop Size” fields. These fields show the width (w) and height (h), in pixels, of the portion of the image selected for import.

By clicking on the “Max” button, the entire image area will be selected for import.

The Output Image file size is shown in parentheses at the top of the dialogue box. If a large crop size is selected at a high resolution level, the file size can grow quite large. If the Viewer notices that you have selected an Output Image that is unusually large in size, the program will warn you, as follows:

- Output Image (71.53M !!!) -

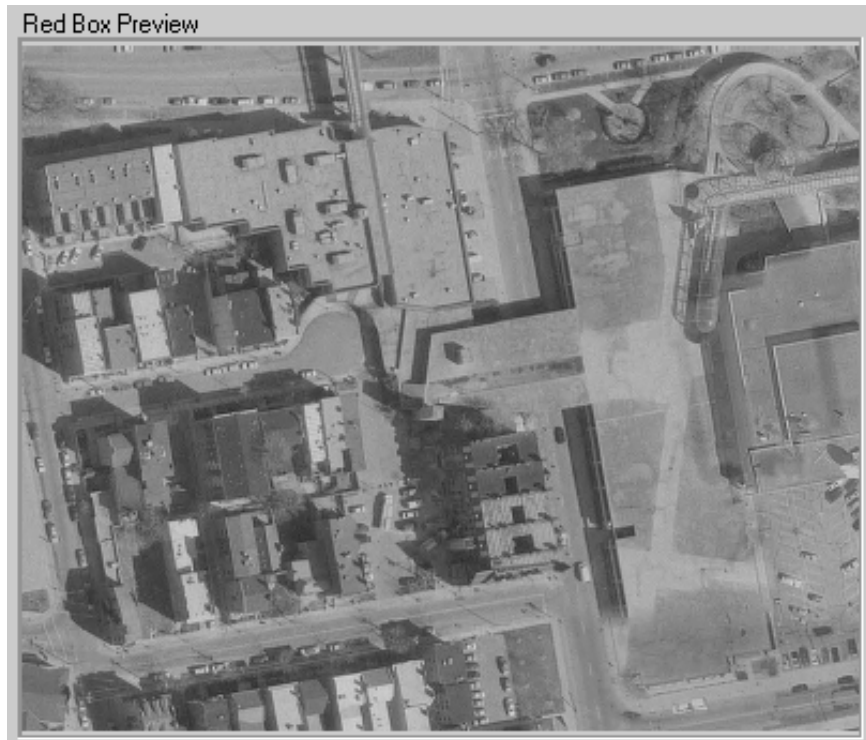
It is best not to open an entire MrSID image if the Output Image file size is larger than your system can handle (refer to the System Requirements on page 2).

The “Resolution” field adjusts the print resolution of the imported image. This field defaults to 72 pixels per inch.

Adjustments made in the Resolution field will not be reflected in the MrSID Viewer window; this field adjusts the imported image only.



The Red-box Preview Window



The Red-box preview window displays a portion of the MrSID image at the zoom level specified in the zoom-level pull-down menu. The portion displayed is delineated by the Red Box in the Thumbnail view.

Please note that the Red-box Preview window does not display the exact image that will be cropped and imported into Photoshop (see the "Crop Box on page 5). Rather, the Red-box window gives a preview of a portion of the final image, and shows the current zoom level. The image can be cropped and adjusted after it has been opened in Photoshop.



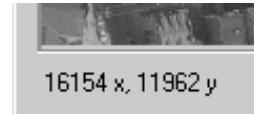


THE PIXEL
COORDINATES
DISPLAY

CONTACTING
LIZARDTECH

The Cursor Pixel Coordinates Display

The precise location of the mouse cursor is displayed in the lower left-hand corner of the MrSID Viewer window.



The coordinates displayed are based on an upper left-hand location of 0,0. In other words, the very upper left-hand corner pixel of the MrSID image defaults to the coordinates of 0-x, 0-y; as the cursor moves through the image, in either the Thumbnail or Red-box preview windows, the pixel coordinates will change in relation to these default coordinates.

Contacting LizardTech

1520 Bellevue Ave. 2nd Floor • Seattle, WA 98122
Phone 206-320-9969 • Fax 206-320-0989
Web <http://www.lizardtech.com>
Email techsupport@lizardtech.com

©1998 LizardTech, Inc.

No part of this document may be reproduced or transmitted by any means without permission from the copyright holder.
PS022798

