

[Net Lizard Tutorial](#)

Topic 1 - Find Sites in Your Notebook

Topic 2 - Go to an Internet Site

Topic 3 - Add Sites to Your Notebook

Topic 4 - Basic Movement Buttons

Topic 5 - Create Your own Favorite Places Tab

Topic 6 - Add Sites to Your Favorite Places Tab

Topic 7 - Show Your Favorite Places Sites

Topic 8 - Connect to the Internet

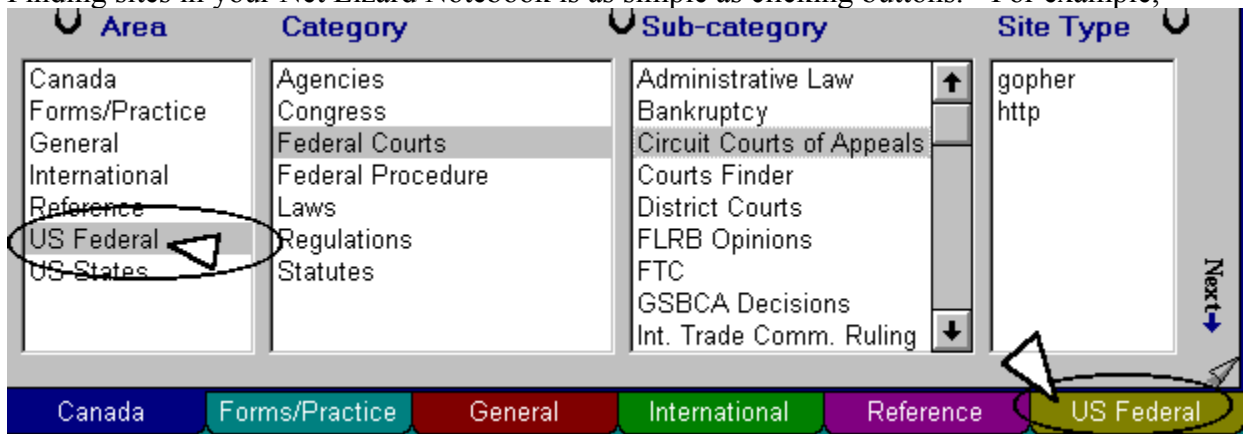
Select any of the above topics or press 'Begin' to start the Tutorial.

Version 5.3

© Point Software, Inc. 1997

Topic 1 - Find Sites in Your Notebook

Finding sites in your Net Lizard Notebook is as simple as clicking buttons. For example,



you can select from the *Table of Content* boxes then hit the 'Enter' key or click on the colored tabs along the edge of the Notebook. Click the last tab on the right to see more of the tabs.

Start

Next

Prior

Topic 2 - Go to an Internet Site



Press the Export button, while on a site page, for the Browser to load the Internet site.

[Start](#)

[Next](#)

[Prior](#)

© Point Software, Inc. 1997

Topic 3 - Add Sites to Your Notebook



Press the Import button, while using the Browser, to copy the site to the Notebook.

[Start](#)

[Next](#)

[Prior](#)

© Point Software, Inc. 1997

Topic 4 - Basic Movement Buttons



Shows the Browser view.



Shows the Notebook view.



Flips to the Next or Prior Notebook site page.

Start

Next

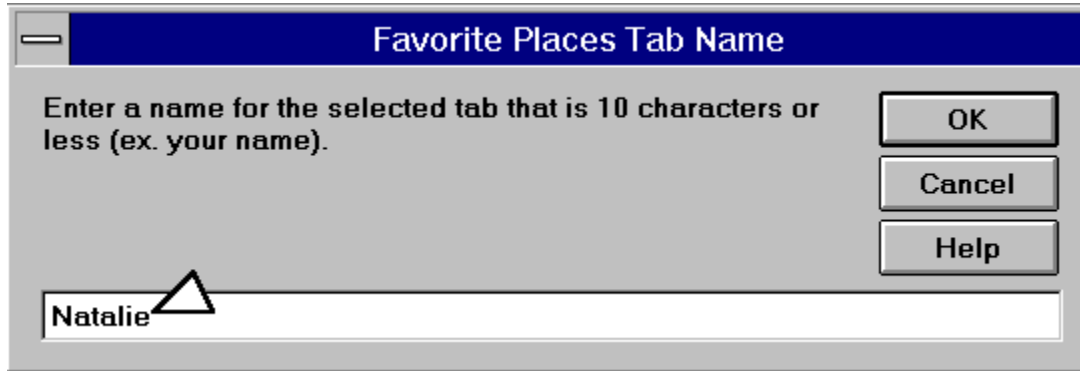
Prior

© Point Software, Inc. 1997

Topic 5 - Create Your own Favorite Places Tab



Click the RIGHT mouse button on a Favorite Places tab to enter your name.



Enter a name or label then click the OK button.

[Start](#)

[Next](#)

[Prior](#)

Topic 6 - Add Sites to Your Favorite Places Tab



Click the Add Favorite button, while on any Notebook site page, to have the site added.

[Start](#)

[Next](#)

[Prior](#)

© Point Software, Inc. 1997

Topic 7 - Show Your Favorite Places Sites



Click the LEFT mouse button on an assigned Favorite Places tab to show those sites.

Start

Next

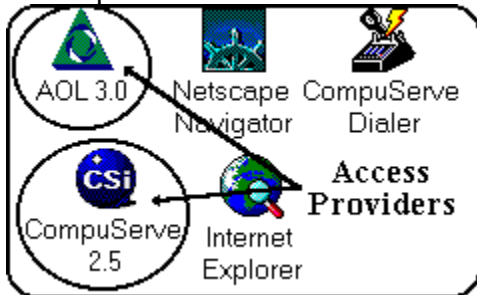
Prior

© Point Software, Inc. 1997

Topic 8 - Connect to the Internet

You must log onto the Internet, using your normal access provider, for the Net Lizard to visit any of the provided sites online. This program is a utility to enhance and organize your Internet experience. It is not intended to replace the Internet service providers. An Internet provider might be America Online, CompuServe, Prodigy or any other independent service. Regardless of the provider, you will need to have your normal Internet service software running and your computer connected for the Net Lizard Internet features to work completely.

You can minimize (shrink) the Internet access provider software once you get connected (log onto the service). We just need the provider's connection, not their software. See the *Tutorial Technical Stuff* section in the software manual for more details on accessing the Internet via an access provider.



Start

Prior

