

## **How to configure Symantec/Delrina WinFax Pro v7.0x to receive and store faxes in the ZyXEL Elite 2864 DRAM**

preliminary version: v0.01 (07/30/96)  
editor: Manfred Recla

there exist three possibilities how to configure WinFax Pro v7.0x for Windows95 to receive faxes offline using the ZyXEL Elite 2864 (and the ZyXEL Elite 2864I ISDN hybrid modemas well):

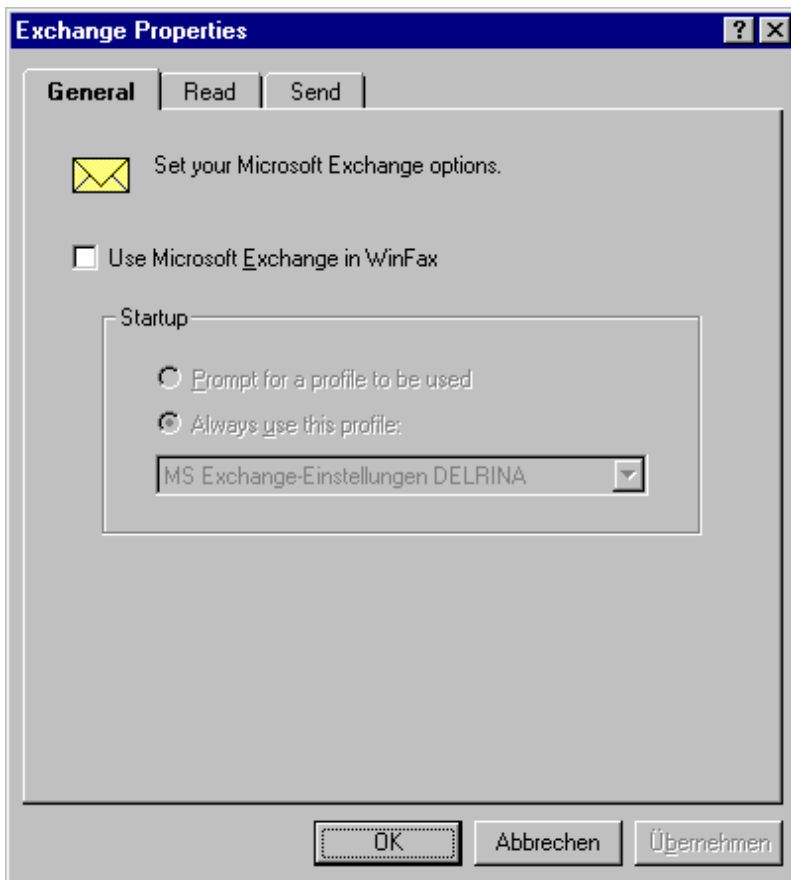
- 1.) WinFax Pro hooked on direct COM port connection
- 2.) WinFax Pro without Microsoft Exchange/At-Work-Fax hooked on TAPI driver "ZyXEL Elite 2864, Plug and Play"
- 3.) WinFax Pro with Microsoft Exchange/At-Work-Fax hooked on TAPI driver "ZyXEL Fax into DRAM, Elite 2864"

btw: this document is based on following versions:

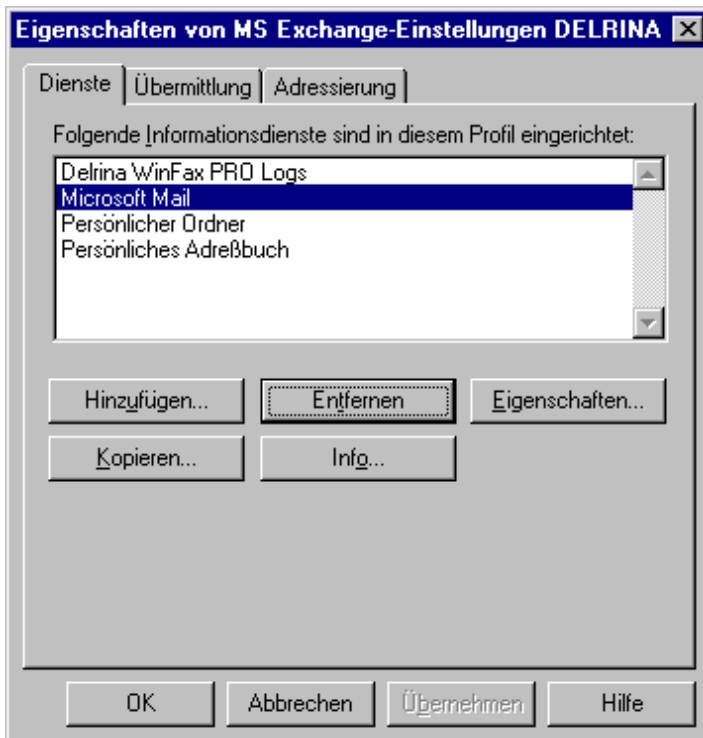
Symantec/Delrina WinFax Pro v7.02 (03/04/96)  
ZyXEL Elite 2864I ISDN firmware v2.03 (07/12/96)  
"MDMZYLXG.INF" ZyXEL modem description file for Windows95  
internal rev. 41 (07/23/96)

- 1.) which additional user defined settings must be entered when you install WinFax Pro v7.02 to communicate directly with any COM port ?**

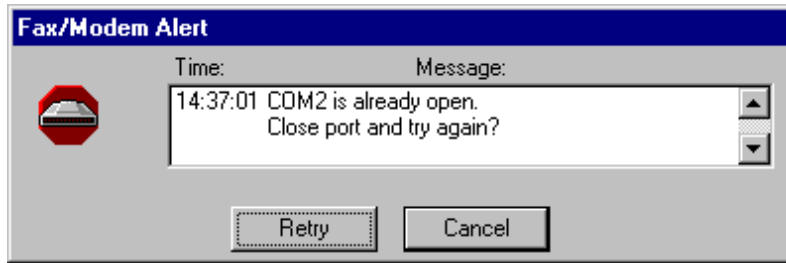
First of all please check in the WinFax Pro v7.02 pull down menu "Setup" that the use for Microsoft Exchange is disabled ...



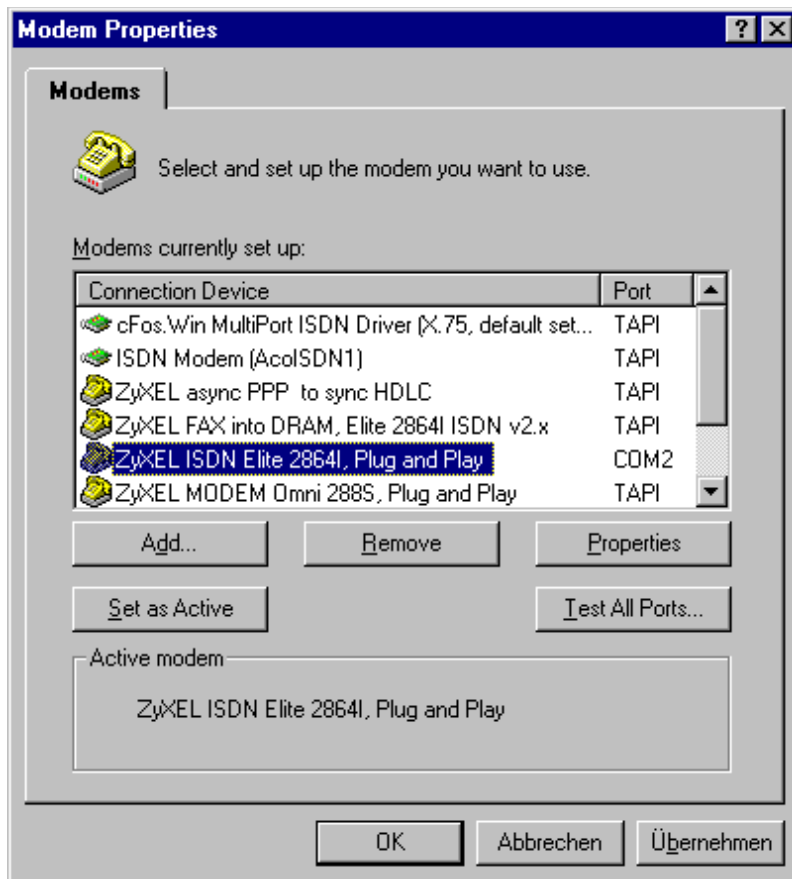
(or - if you really need Exchange Mail - then have a look into it's properties and remove the "Microsoft Fax" information service !)



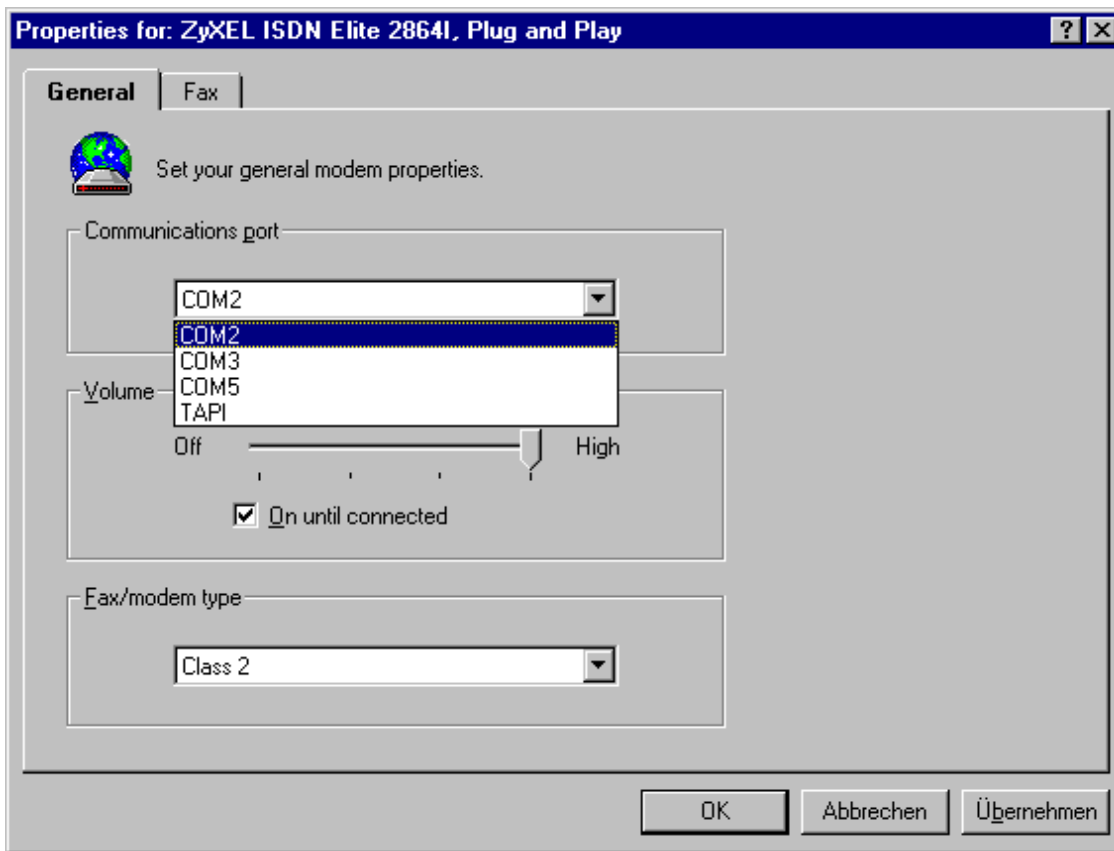
otherwise you could get following alert message:



In WinFax Pro v7.02 pull down menu "Setup" you then should check the modem properties as follows:

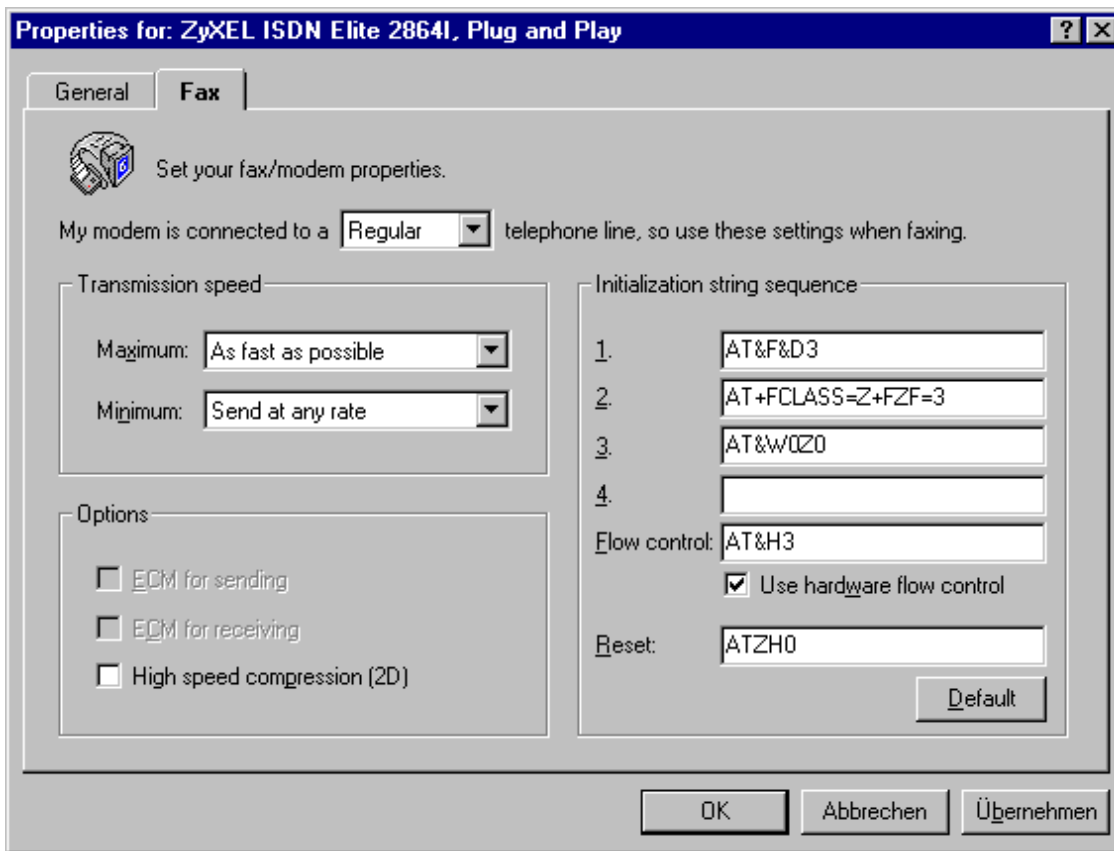


please choose that physical COM port on that you have connected your modem:



now modify the user defined initialization strings as shown below:  
The +FZF=3 is for receiving fax offline into ZyXEL Elite's DRAM and  
to disconnect if the incoming call is a data call.

For the different possibilities and functions for direct fax  
reception and printing (AT+FZF=n) please read the ZyXEL Elite 2864  
User's Manual in chapter 15



ATTENTION: for the ZyXEL Elite 2864I ISDN hybrid modem please set the first user defined initialization string to: AT&F&D3S89.4=1&L1

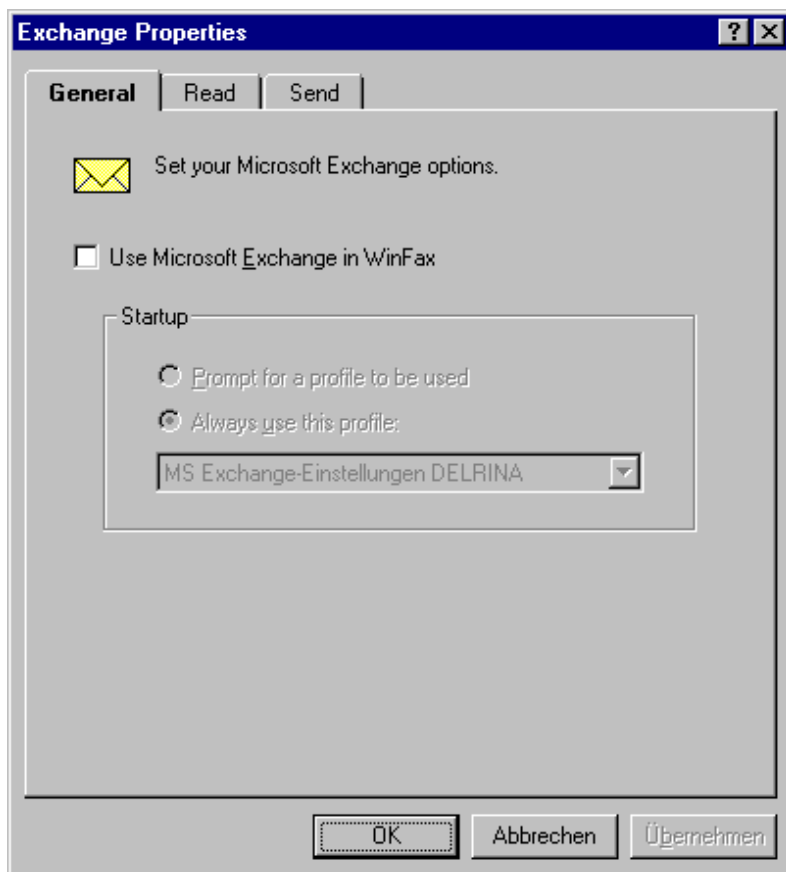
If your ZyXEL Elite 2864 indicates that it has stored faxes into its DRAM then the FAX LED will flash. So this is a sign for you to MANUALLY receive the faxes from the DRAM. Just click on the pull down menu "Receive" and select the "Manual Receive Now" entry as long as the FAX LED won't flash anymore and is constantly off.

ATTENTION: you can retrieve the faxes from the DRAM only if the type of fax/modem in WinFax Pro v7.02 is set to "Class 2" !

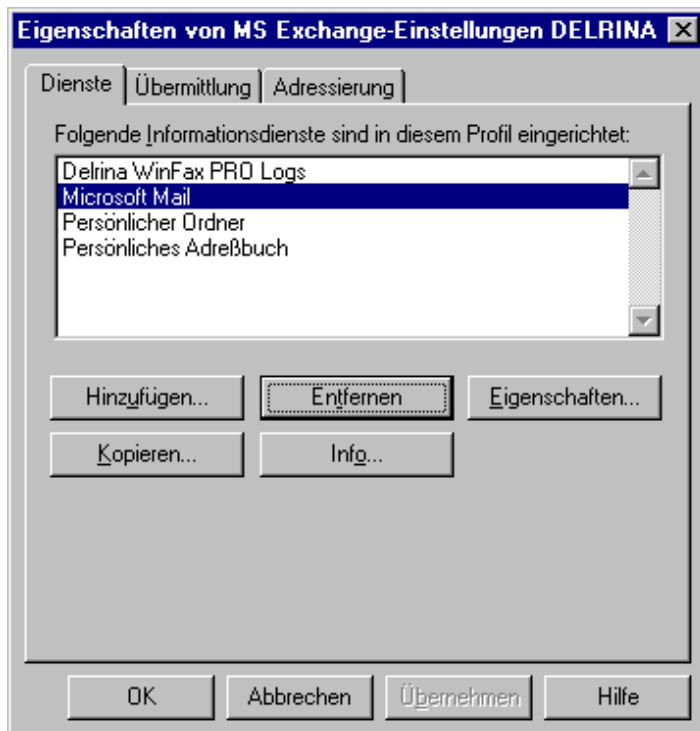


2.) which additional user defined settings must be entered when you install WinFax Pro v7.02 to communicate without Microsoft Exchange/At-Work-Fax and with a TAPI driver ?

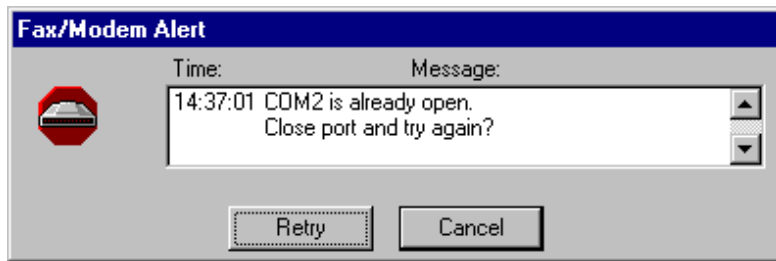
First of all please check in the WinFax Pro v7.02 pull down menu "Setup" that the use for Microsoft Exchange is disabled ...



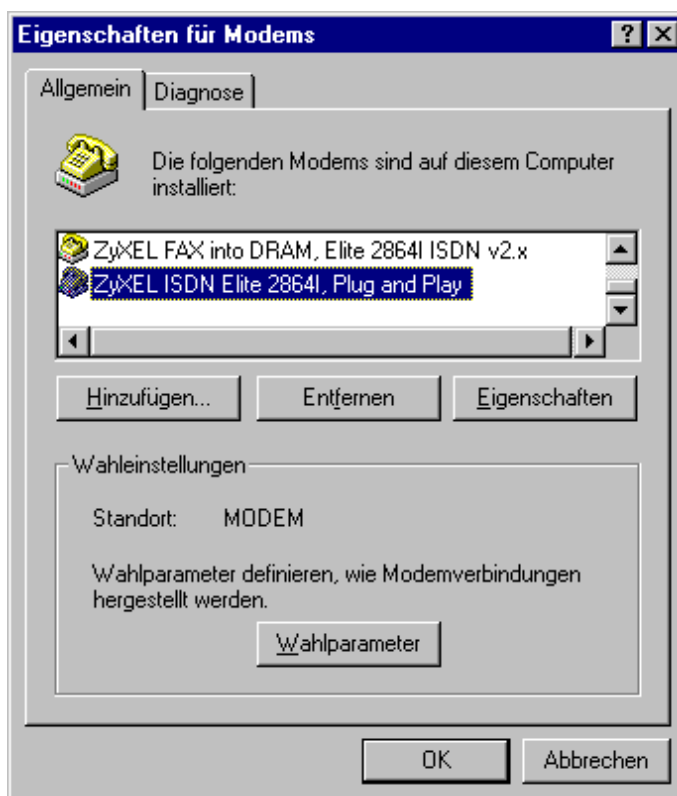
(or - if you really need Exchange Mail - then have a look into it's properties and remove the "Microsoft Fax" information service !)



otherwise you could get following alert message:

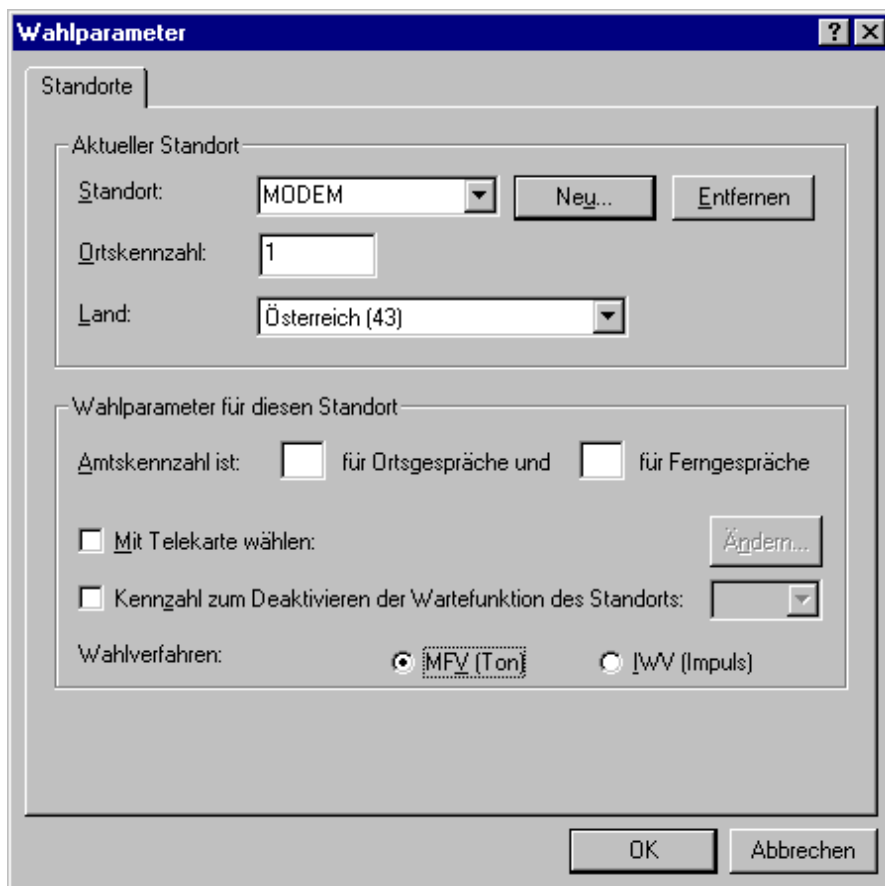


please open the "Start|Settings|Control Panel|Modems" and check following modem properties:

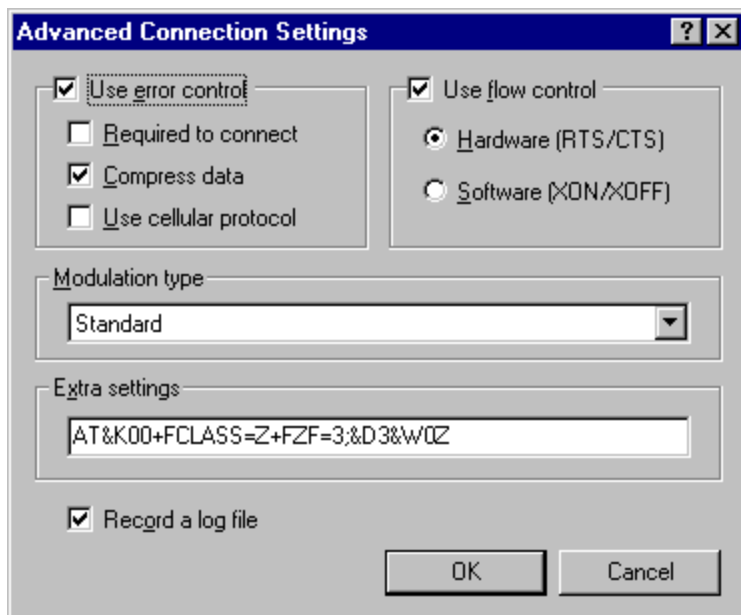


**ATTENTION:** If you use the ZyXEL Elite 2864I ISDN hybrid modem then you should check the "Tone" or "MVF" dialing mode in the dialing parameters dialog box so that this TAPI driver will use the "ATDM" (dial modem) command for outgoing fax/modem calls !



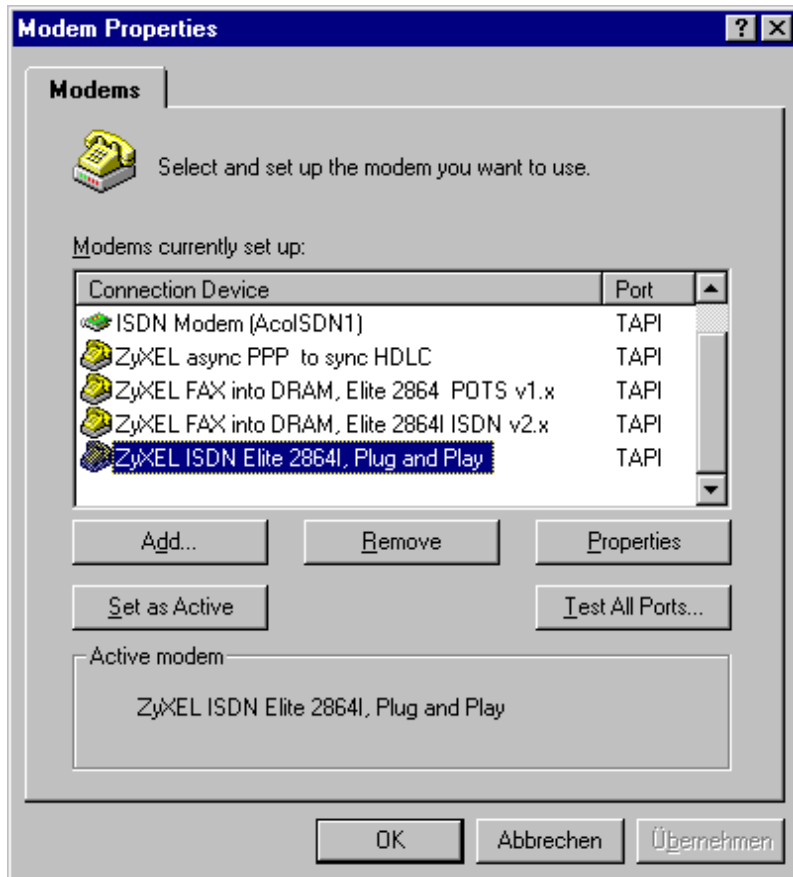


In the advanced connection settings dialog box of the modem properties you should add in the "Extra settings" editable field the modem command as follows:  
(Please be noted that there is a ";" character between the \*FZF=3 and the &D3

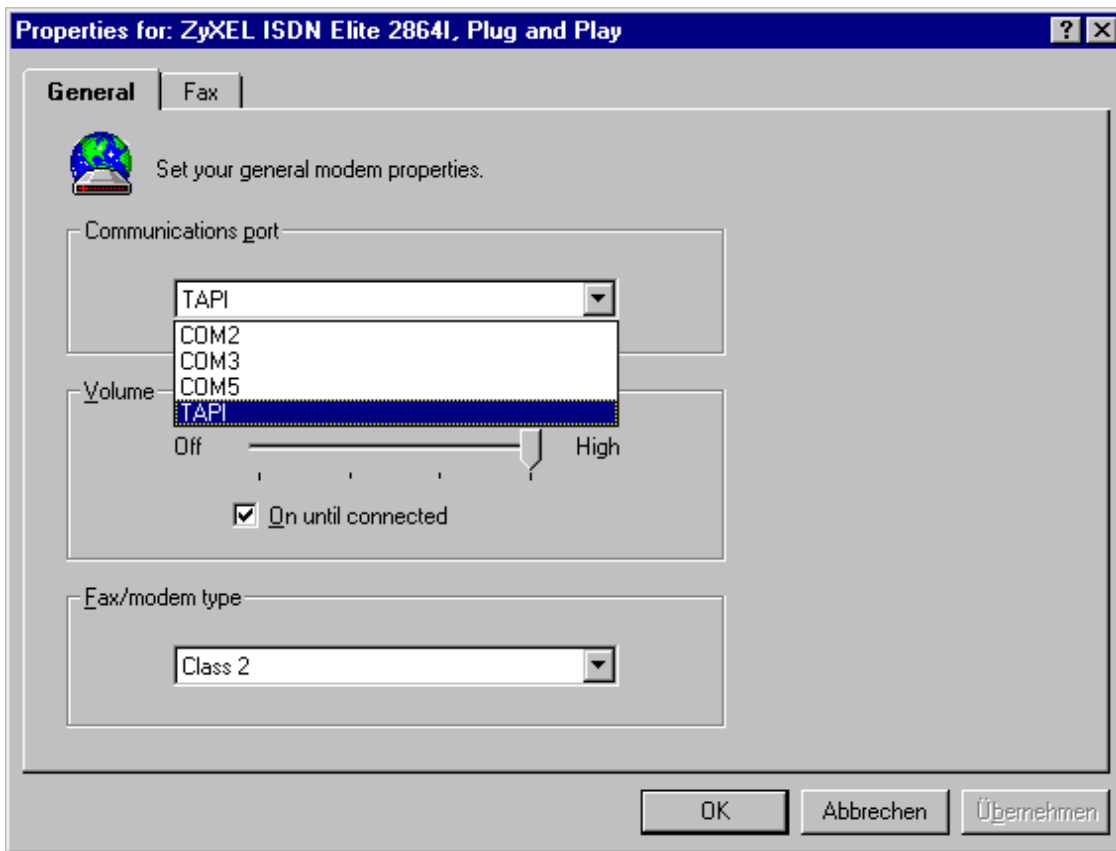


ATTENTION: if you use the ZyXEL Elite 2864I ISDN hybrid modem then add the S89.4=1&L1 commands before the &W0 !  
The complete string then will be:  
AT&K00+FCLASS=Z+FZF=3;&D3S89.4=1&L1&W0Z

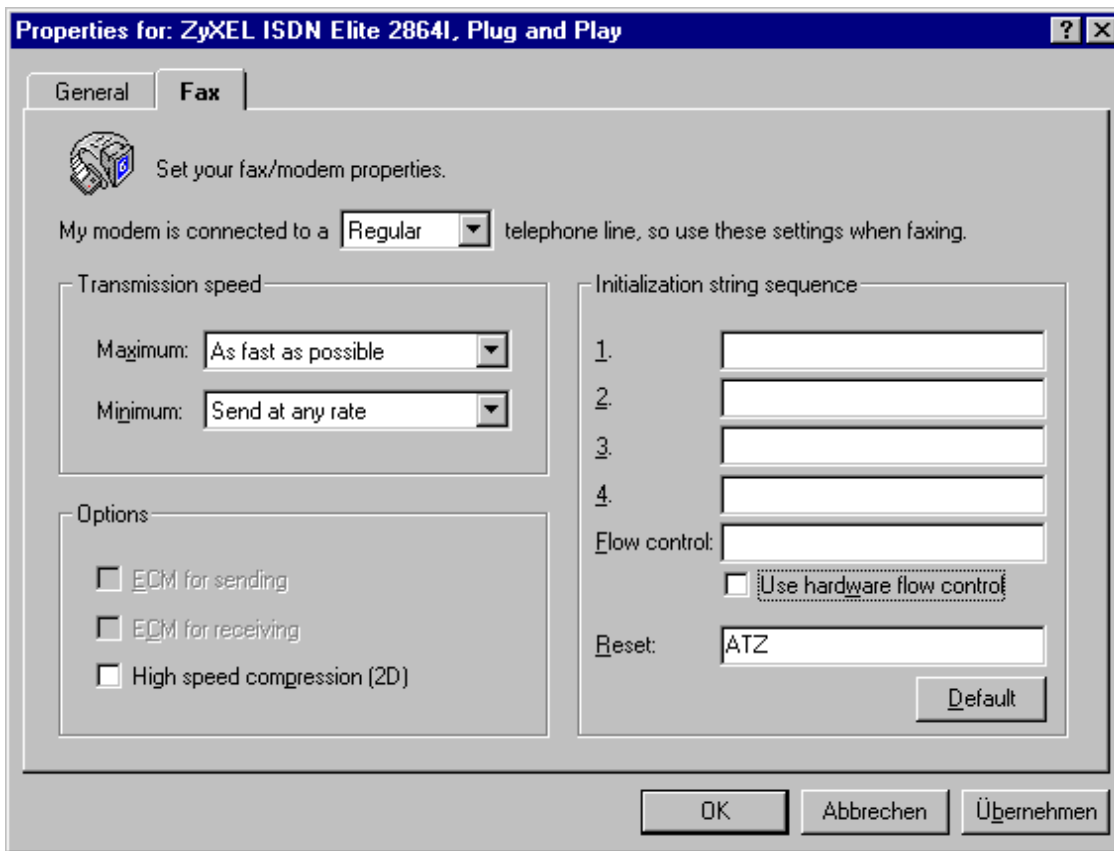
In WinFax Pro v7.02 pull down menu "Setup" you then should check the modem properties as follows:



please choose the TAPI port:



ATTENTION: the user defined initialization strings of WinFax Pro v7.x won't be sent to the modem in the TAPI mode ! So they are NOT important.



If your ZyXEL Elite 2864 indicates that it has stored faxes into its DRAM then the FAX LED will flash. So this is a sign for you to MANUALLY receive the faxes from the DRAM. Just click on the pull down menu "Receive" and select the "Manual Receive Now" entry as long as the FAX LED won't flash anymore and is constantly off.

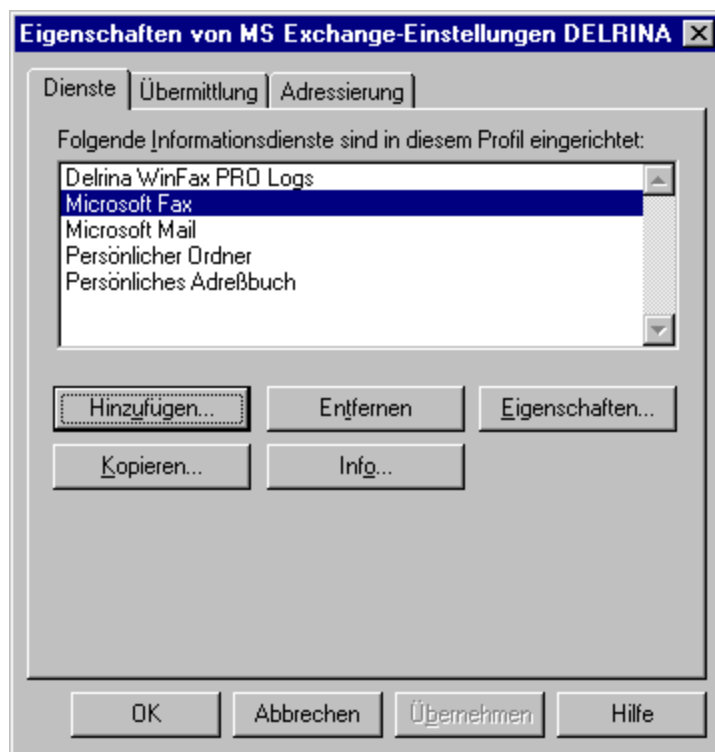
**ATTENTION:** you can retrieve the faxes from the DRAM only if the type of fax/modem in WinFax Pro v7.02 is set to "Class 2" !



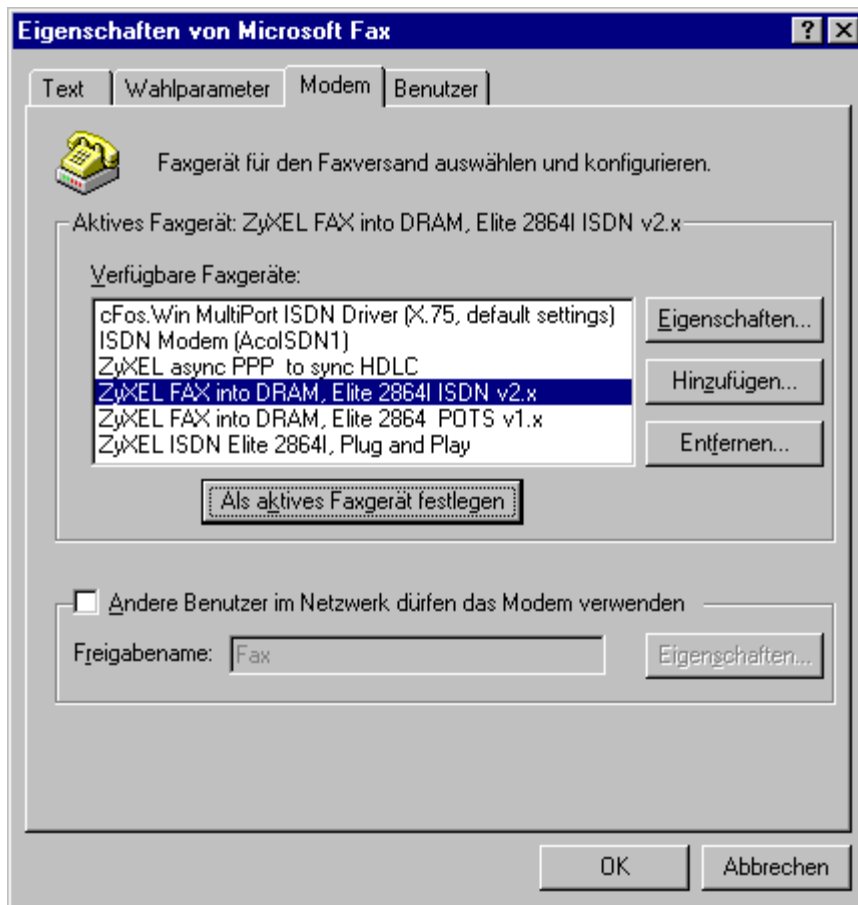
3.) which additional user defined settings must be entered when you install WinFax Pro v7.0x to communicate WITH (!) Microsoft Exchange/At-Work-Fax and with a TAPI driver ?

First check in the "Start|Settings|Control Panel|Mail and Fax" that the "Microsoft Fax" service is displayed in the service list. Otherwise add this service !

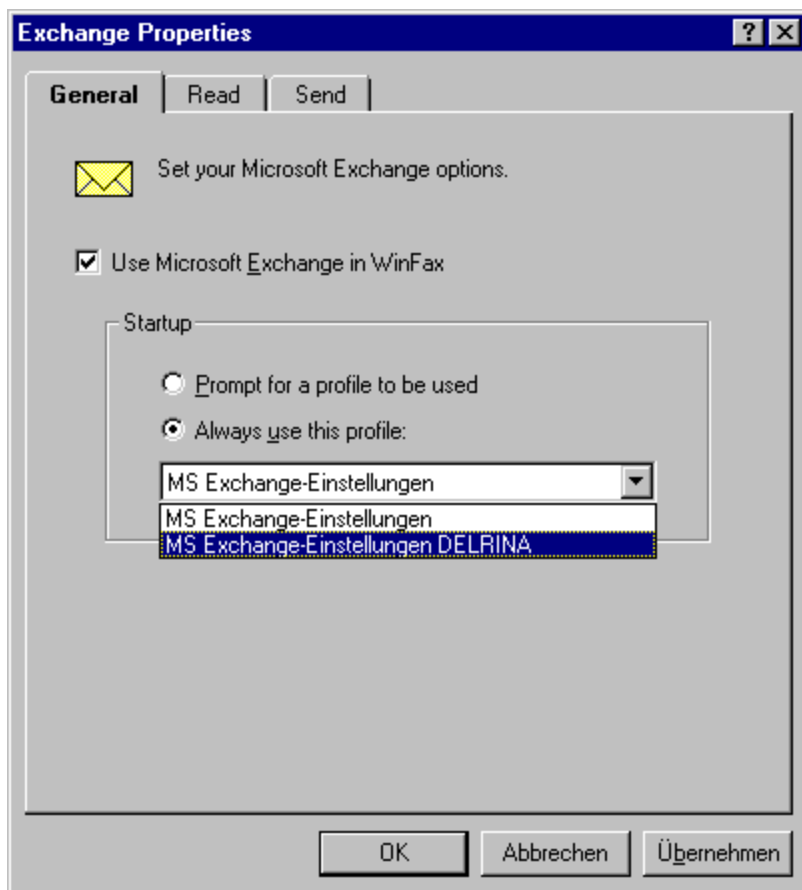
I recommend to create a completely new set of services, in my example it is called "MS Exchange-Einstellungen DELRINA" because this will be activated by WinFax Pro v7.0x as described later:



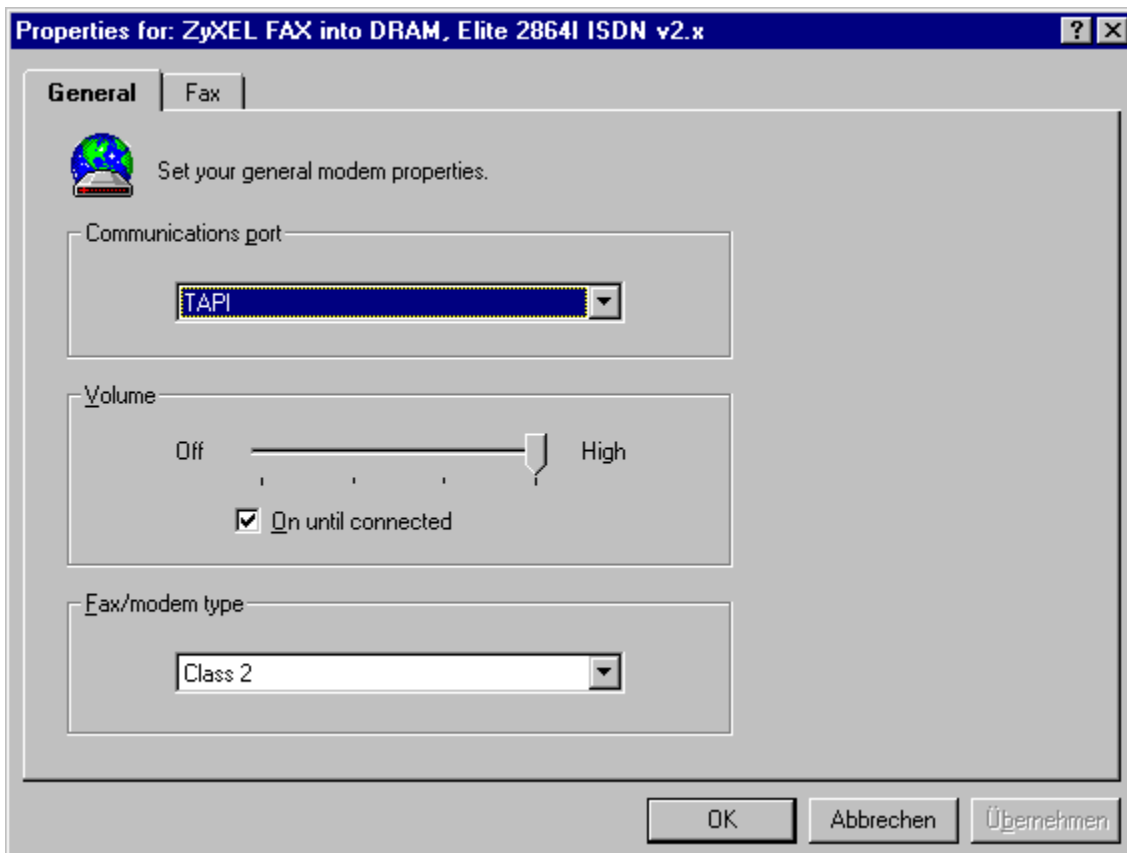
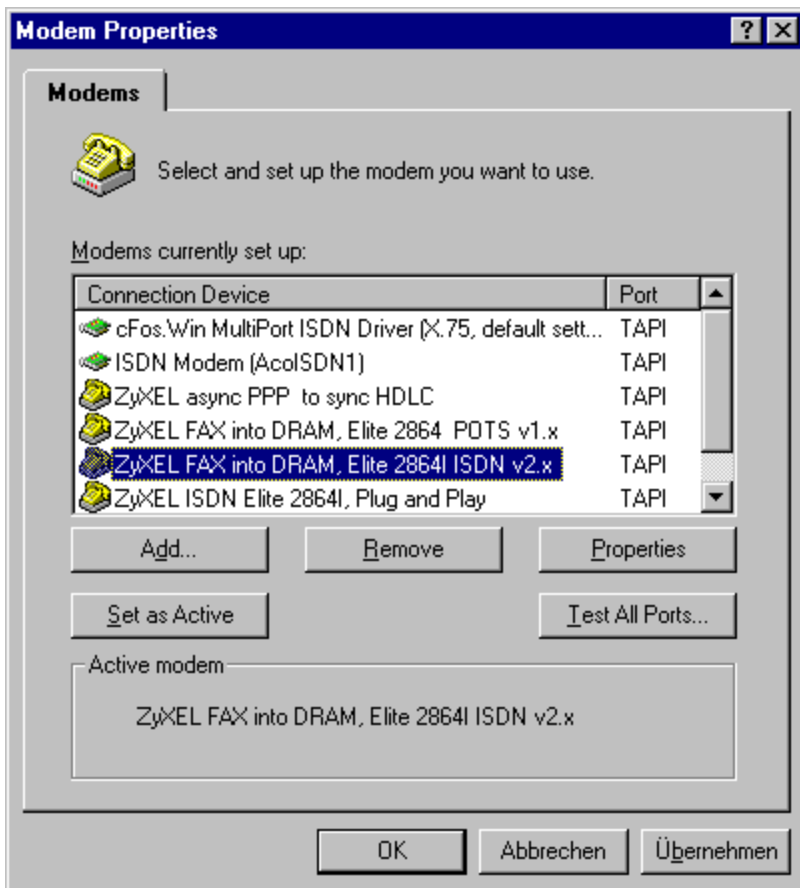
when you are asked to select the default fax modem please select the "ZyXEL FAX into DRAM, Elite 2864 POTS v1.x" or if you use the ISDN hybrid modem then select the "ZyXEL FAX into DRAM, Elite 2864I ISDN v2.x" as it is shown in following screen shot:



The next step is to enable in WinFax Pro's "Setup" pull down menu the usage for "Microsoft Exchange in WinFax" and select the appropriate set of services for Exchange as in following example screen shot:



No you should also check that in the WinFax Pro v7.0x modem setup you select the same modem entry as you have selected for Microsoft Exchange:

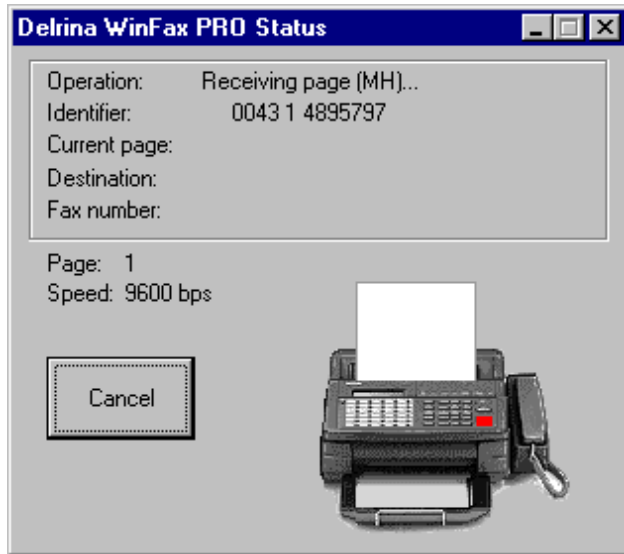


If your ZyXEL Elite 2864 indicates that it has stored faxes into



its DRAM then the FAX LED will flash. So this is a sign for you to MANUALLY receive the faxes from the DRAM. Just click on the pull down menu "Receive" and select the "Manual Receive Now" entry as long as the FAX LED won't flash anymore and is constantly off.

**ATTENTION:** you can retrieve the faxes from the DRAM only if the type of fax/modem in WinFax Pro v7.02 is set to "Class 2" !



If you have still problems in offline receiving faxes into DRAM please contact your local authorized ZyXEL distributor in your country.

PS: currently we know of a bug in the firmware v1.12 for the ZyXEL Elite 2864 (analog modem !) that this prevents the offline fax receiving (ie. DTR signal is off). You should request at least the emergency firmware v1.12f (07/05/96) where this bug has been fixed. This is not a public firmware release so you won't find it on the Internet or in any official ZyXEL Support BBS !

electronic greetings from Vienna  
Manfred Recla

```
*****  
SES Datensysteme, authorized ZyXEL Distributor [Austria]  
ZyXEL Technical Database Europe - Coordination Center  
E-Mail: support@zyxel.co.at (Manfred Recla)  
FTP: ftp://ftp.zyxel.co.at/pub/users/zyxel/  
WWW: http://www.zyxel.co.at/zyxel/  
*****
```

