

# Content for Catalog

Copyright © 1996 Benjamin BOURDERON ([Benjab@msn.com](mailto:Benjab@msn.com))

Catalog is a tool which allows you to catalog unit drive into files, the unit drive can be a floppy, a hard drive, an optical drive or a cdrom, it allows you to search files which have been added into the file.

## [The main window](#)

the main window of Catalog

## [Searching for files](#)

How to use the search window

## [Uninstallation](#)

How to uninstall Catalog...

## [Shareware](#)

What is shareware ?

## [How to register](#)

Form to register Catalog

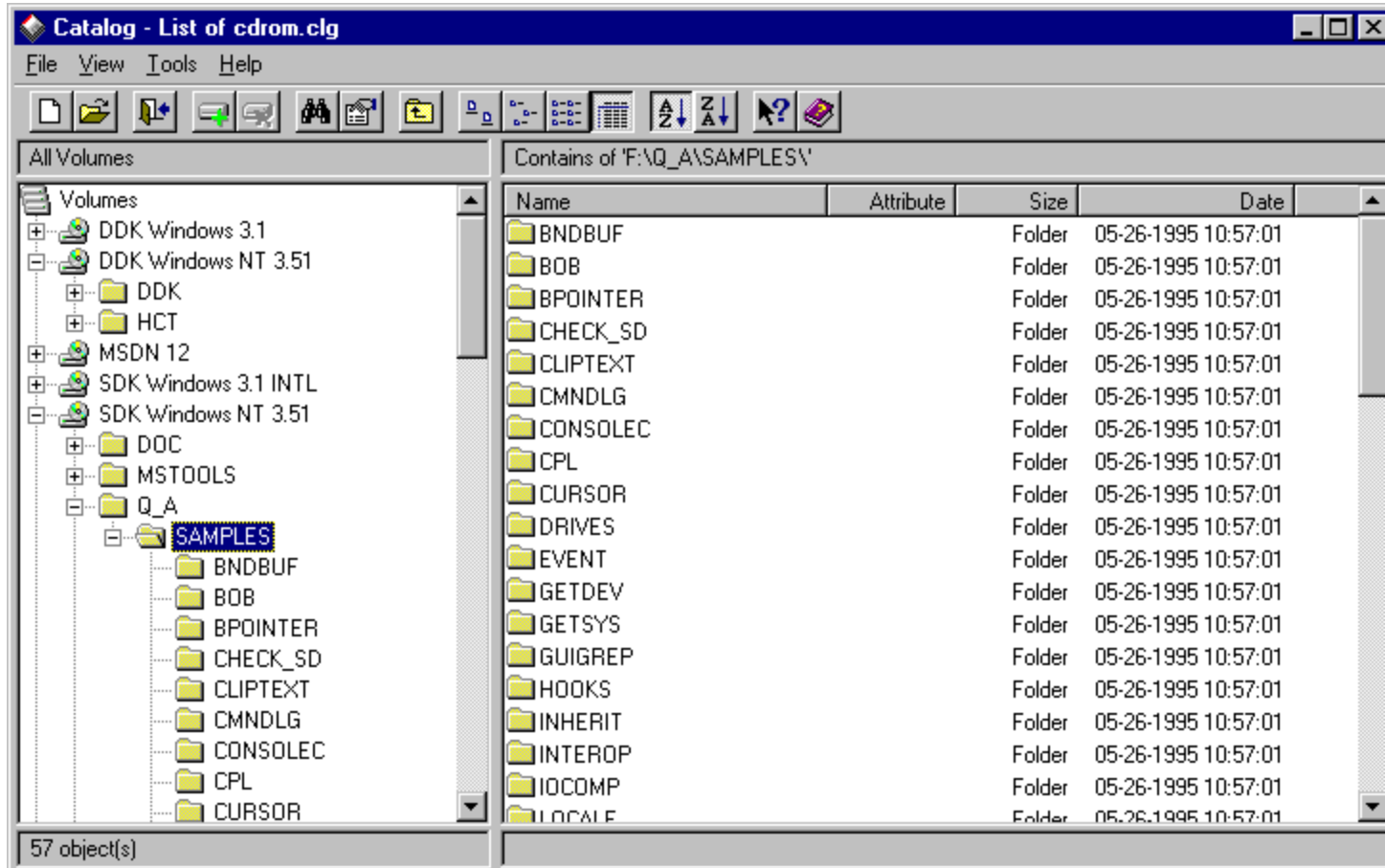
This is my Internet address, allowing you to send me your remarks for **Catalog**

## The Main Windows

{button ,KL("Catalog")} **See Also**

Copyright © 1996 Benjamin BOURDERON ([Benjab@msn.com](mailto:Benjab@msn.com))

This is the main window of Catalog, it allows you to add and to view the volumes you have add into your file. For more information, click into a button or a menu



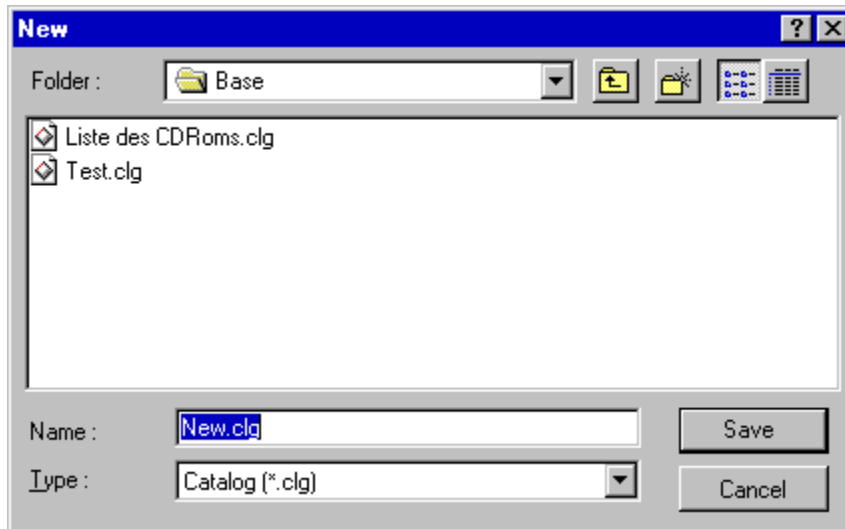
the menu bar of catalog has a title bar, a minimize button, a maximize button, a system menu, and a menu. To open a menu and view its sub menu, you just have to click on the menu name or press ALT + the shortcut key. The toolbar has some buttons, used for the most used options.

## New file

{button ,KL("Catalog file ")} **See Also** Copyright © 1996 Benjamin BOURDERON ([Benjab@msn.com](mailto:Benjab@msn.com))



This menu allows you to create a new Catalog file. To do this you just have to type the name of the new file, and then click to the save button, Catalog will start the creation of the new file. After the creation of this new file, you will be able to add volumes into the file

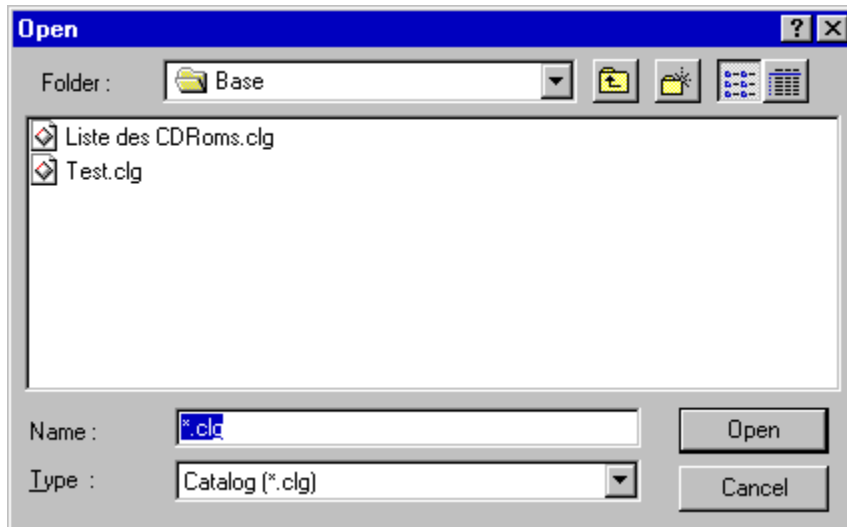


## Open File

{button ,KL("Catalog file ")} **See Also** Copyright © 1996 Benjamin BOURDERON ([Benjab@msn.com](mailto:Benjab@msn.com))



This menu allows you to open an existing Catalog File, to open this file, you just have to select the right file and to click on the open button, After this, you will be able to view the content of your catalog file, to Add or suppress volumes, or to search for files which have be catalog into the file.



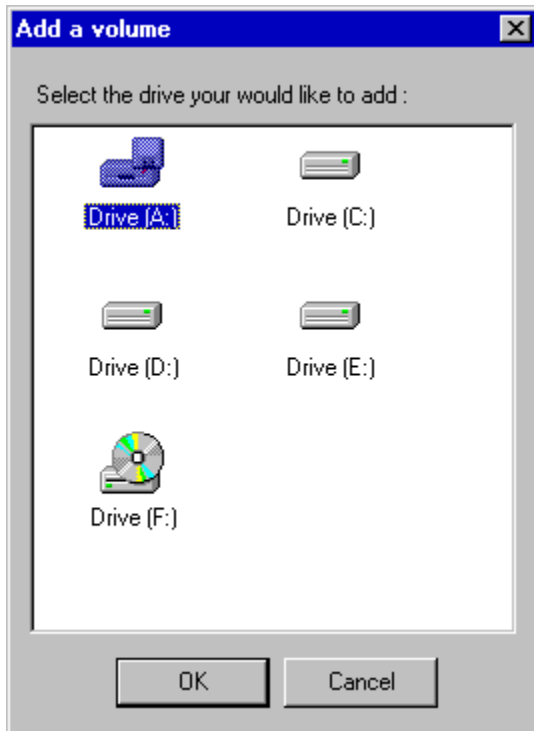
## Add a volume

{button ,KL("Volume")} **See Also**

Copyright © 1996 Benjamin BOURDERON ([Benjab@msn.com](mailto:Benjab@msn.com))



This menu allows you to add new volume into the current file. You can choose with the following window which drive you would like to add in the current file. You just have to select the right drive and then click on the OK button. If the drive is currently in your open file,, Catalog will demand to you if you would like to Update the volume.



**Note** : This menu is also accessible with a right click on 'Volumes'

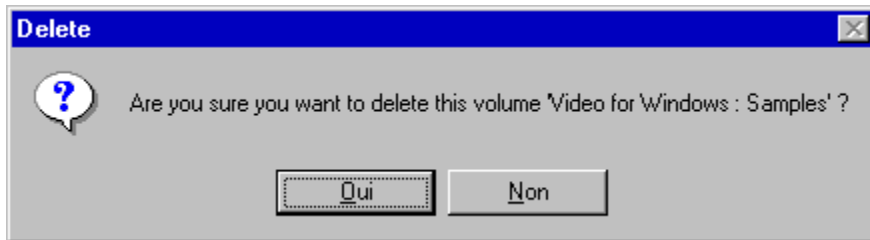
## Delete a volume (Del)

{button ,KL("Volume")} **See Also**

Copyright © 1996 Benjamin BOURDERON ([Benjab@msn.com](mailto:Benjab@msn.com))



This menu allows you to remove a volume from the current file. You must confirm the suppression of the volume with the following window. If you click on the Yes button, Catalog will remove the volume from the file.



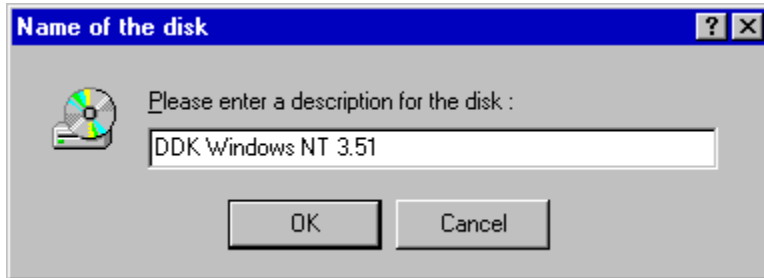
**Note** : This menu is also accessible with a right click on a volume

## Rename a volume (F2)

{button ,KL("Volume")} **See Also**

Copyright © 1996 Benjamin BOURDERON ([Benjab@msn.com](mailto:Benjab@msn.com))

This menu allows you to rename the description for a volume, to do this you just have to select a volume and to press F2, the following window will appear and you just have to type the new description and press OK.



**Note** : This menu is also accessible with a right click on a volume



## Update Volume

{button ,KL("Volume ")} **See Also**

Copyright © 1996 Benjamin BOURDERON ([Benjab@msn.com](mailto:Benjab@msn.com))

This menu allows you to update an existing volume. Note that you can choose the type of Update checking you want in the [Options](#) window.

The program will search if the volume is currently in a drive and if the volume is found, the update process will begin.

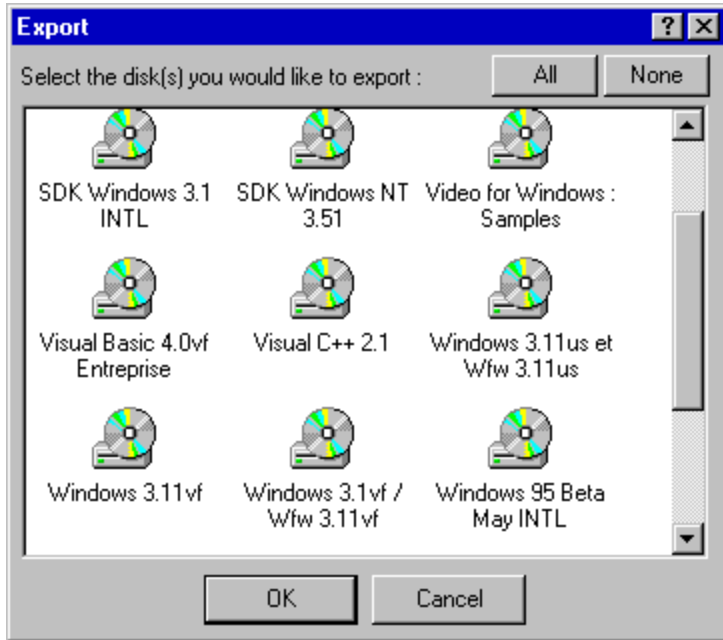
**Note** : This menu is also accessible with a right click on a volume

# Export

{button ,KL("Volume ")} **See Also**

Copyright © 1996 Benjamin BOURDERON ([Benjab@msn.com](mailto:Benjab@msn.com))

This menu allows you to export the contains of a volume (or several volumes) into to text file. This will allows you to open and print the export result with the notepad for example. Here is the window :



Here is an example of the export menu :

```
=====
=
ID :                BAF58358
Label :             VFW11SAMPLE
Description :       Video for Windows : Samples
Update :            Mardi 19 décembre 1995 13:11:20
Type :              CDROM
Drive :             F:
System :            CDFS
Files :             199
Used size :         567 967 744 Bytes
Free size :         0 Bytes
Total size :        567 967 744 Bytes
-----
--
Folder : f:\

SAMPLES              <Folder>  06-24-1994  00:47:19
VIDTEST              <Folder>  06-24-1994  00:47:19
AMAZING.MBR          369  11-19-1993  07:00:00    R
AMERICA.MBR          418  11-19-1993  07:00:00    R
BUSINESS.MBR         409  11-19-1993  07:00:00    R
COMPRESS.MBR         4 391  11-19-1993  07:00:00    R
FACES.MBR            405  11-19-1993  07:00:00    R
FUNCLIP.BMP          630  11-19-1993  07:00:00    R
```

MBROWSER.EXE	64	704	11-19-1993	07:00:00	R
MBRWSER.HLP	18	672	11-19-1993	07:00:00	R
MISC.MBR		500	11-19-1993	07:00:00	R
MOVIES.MBR		424	11-19-1993	07:00:00	R
MUSIC.MBR		399	11-19-1993	07:00:00	R
NATURE.MBR		368	11-19-1993	07:00:00	R
PARKS.MBR		553	11-19-1993	07:00:00	R
PLACES.MBR		387	11-19-1993	07:00:00	R
SCIENCE.MBR		402	11-19-1993	07:00:00	R
SEASONS.MBR		373	11-19-1993	07:00:00	R
SHARKS.MBR		305	11-19-1993	07:00:00	R
SPACE.MBR		393	11-19-1993	07:00:00	R
SPECIAL.MBR		316	11-19-1993	07:00:00	R
SPORTS.MBR		489	11-19-1993	07:00:00	R
VIDCLIP.BMP		630	11-19-1993	07:00:00	R
WILDWEST.MBR		461	11-19-1993	07:00:00	R

## Exit to windows

{button ,KL("Catalog")} **See Also**

Copyright © 1996 Benjamin BOURDERON ([Benjab@msn.com](mailto:Benjab@msn.com))



This menu allows you to exit Catalog and to return to windows. You can use the following icon to do the same thing.

## The Toolbar and the Status bar

{button ,KL("Options ")} **See Also** Copyright © 1996 Benjamin BOURDERON ([Benjab@msn.com](mailto:Benjab@msn.com))

In the view menu you can show or hide the toolbar or the status bar, to do this click on the menu Toolbar or Status Bar.

# Change the icon view

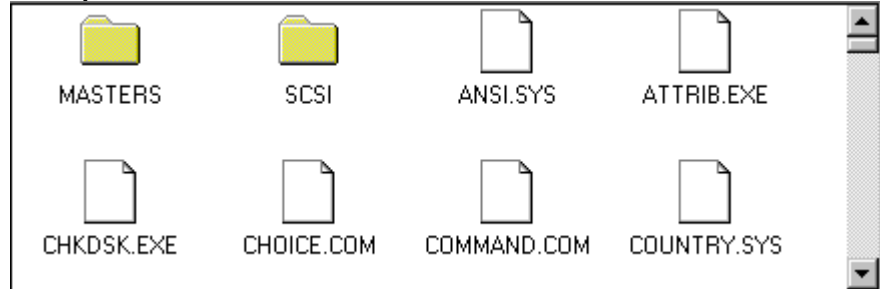
{button ,KL("Options ")} **See Also**

Copyright © 1996 Benjamin BOURDERON ([Benjab@msn.com](mailto:Benjab@msn.com))



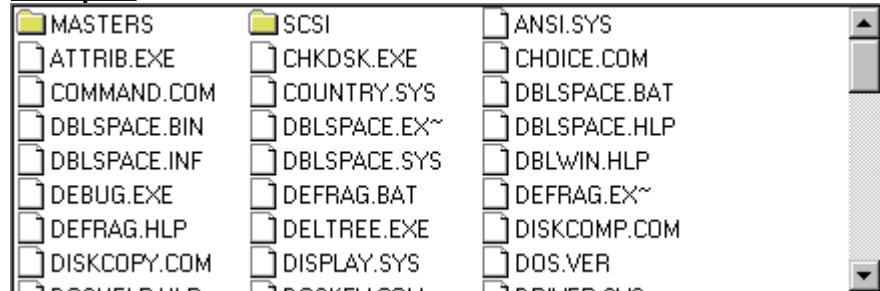
In the list of files, each item appears as a full-sized icon with a label below it.

**Example :**



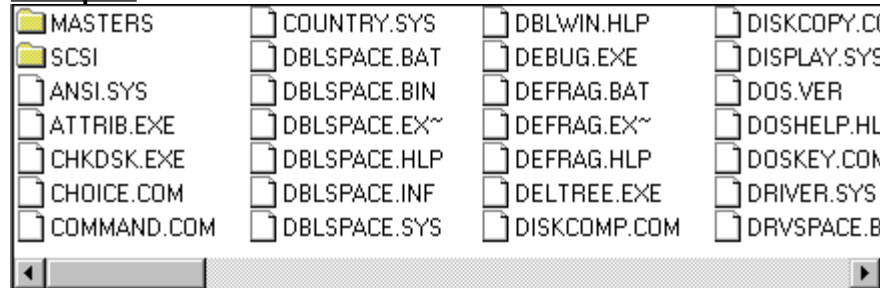
In the list of files, each item appears as a small icon with the label to the right of it and arrange horizontally.

**Example :**



In the list of files, each item appears as a small icon with the label to the right of it and arrange vertically.

**Example :**



In the list of files, each item appears on its own line with information arranged in columns. The leftmost column contains the small icon and label, and subsequent columns contain subitems.

**Example :**

Name	Attribute	Size	Date
MASTERS		Folder	11-24-1995 17:34:46
SCSI		Folder	11-24-1995 16:42:14
ANSI.SYS	A	9 065	09-30-1993 14:20:00
ATTRIB.EXE	A	11 208	09-30-1993 14:20:00
CHKDSK.EXE	A	12 241	09-30-1993 14:20:00
CHOICE.COM	A	1 754	09-30-1993 14:20:00
COMMAND.COM	A	54 619	09-30-1993 14:20:00
COUNTRY.SYS	A	19 546	09-30-1993 14:20:00

**Note** : This menu is also accessible with a right click on the list of files

## Sort order and reorganization

{button ,KL("Options ")} **See Also** Copyright © 1996 Benjamin BOURDERON ([Benjab@msn.com](mailto:Benjab@msn.com))

This two icons allows you to change the sort order in the list of files



Sort Ascending



Sort Descending

The reorganization menu allows you to change on which item the sort will be perform. You change for example sort the files by size or by name, or sort the volumes by available size or total size.

**Note** : This menu is also accessible with a right click on the list of files



# The properties windows

{button ,KL("Windows")} **See Also** Copyright © 1996 Benjamin BOURDERON ([Benjab@msn.com](mailto:Benjab@msn.com))



This menu allows you to get information about an objet in Catlog.

Here are the the properties windows :

**Properties for 'All Volumes'**

All Volumes	
Folders	1 529
Files	34 106
<b>Total :</b>	<b>34 106</b>
Floppy Drive	3
Removable drive	0
Hard drive	3
Network drive	0
CDRom	3
Memory drive	0
<b>Total :</b>	<b>9</b>

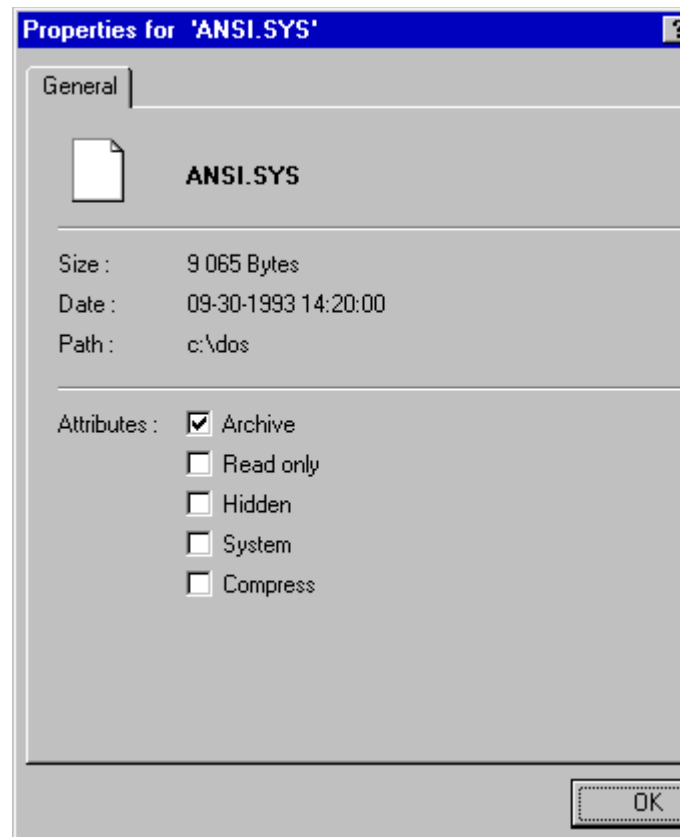
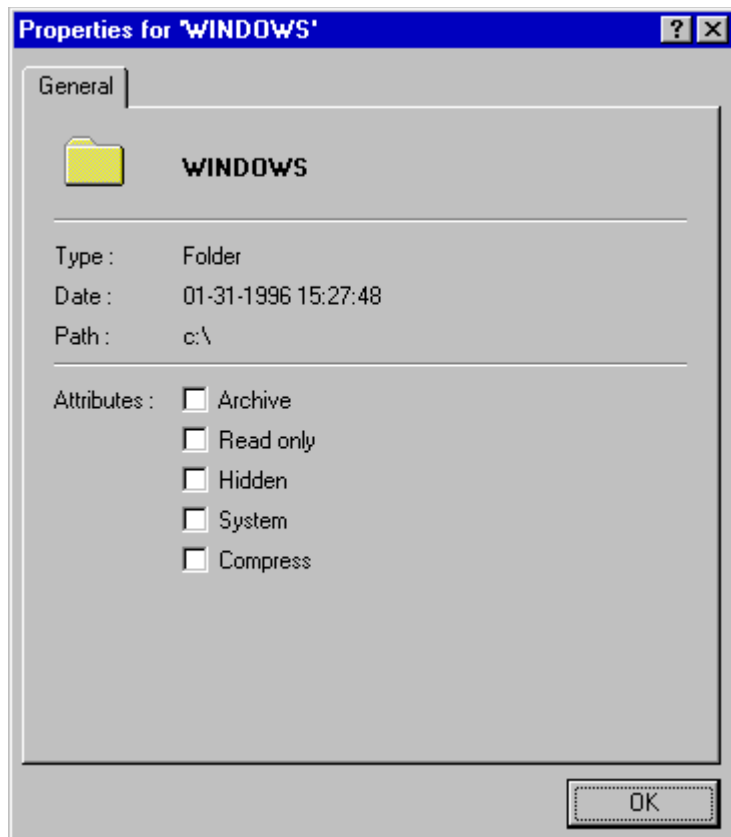
**Properties for a 'Folder'**

**Properties for a 'Volume'**

Properties for 'DUR_A'			
ID :	25106201	Label :	DUR_A
Files :	8 134	Drive :	C:
Description :	<b>DUR_A</b>		
Type :	Hard drive		
System :	FAT		
Update :	Mardi 20 février 1996 11:09:38		
Used size :	489 766 912 Bytes	478,29 Mb	
Free size :	299 614 208 Bytes	292,59 Mb	
Total size :	789 381 120 Bytes	770,88 Mb	

38 % Free

**Properties for a 'File'**



**Note** : These windows are available with a right click on all items in catalog.

## Go up

{button ,KL("Options")} **See Also**

Copyright © 1996 Benjamin BOURDERON ([Benjab@msn.com](mailto:Benjab@msn.com))



This button allows you to go up from a folder.

## Search window

{button ,KL("Windows")} **See Also**

Copyright © 1996 Benjamin BOURDERON ([Benjab@msn.com](mailto:Benjab@msn.com))

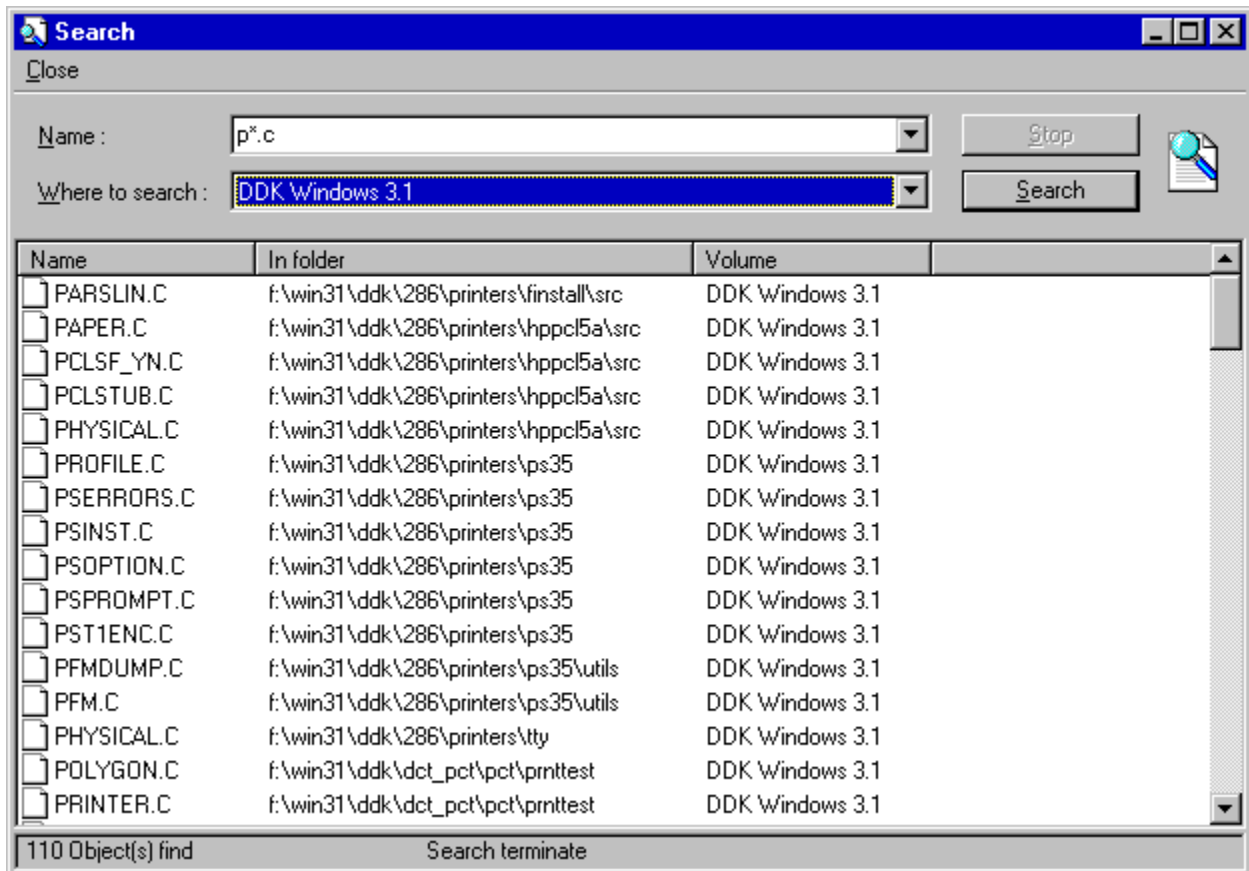


This button allows you to show the search window, with it you can search files on volumes which are in the current open file. You can use in the name text box generic characters.

- \* for all characters
- ? for a single character

When you have enter the name of the file you would like to find, just click on the seach button to start the search process.

**Important** : The speed of the searching can be increase if you doesn't start with a generic character ( for example Myfiles\*), the best result is made when you don't use any generic characters ( for example : myfiles.txt) and it's really very rapid.



**Note** : this menu is also accessible with a right click on a volume or on 'Volumes'

## Compact file

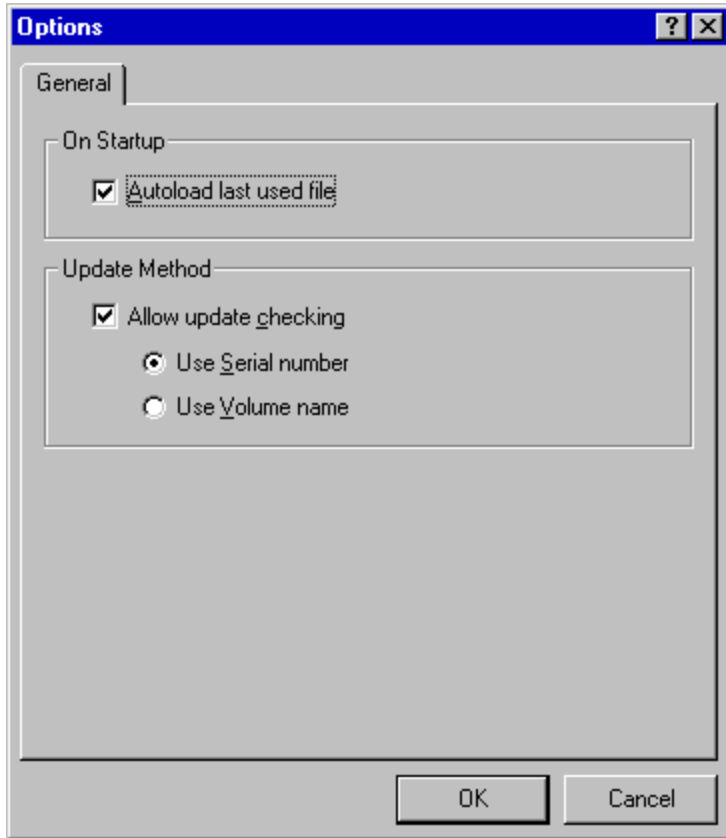
{button ,KL("Tools"); **See Also** Copyright © 1996 Benjamin BOURDERON ([Benjab@msn.com](mailto:Benjab@msn.com))

The files use in catalog can, if you add and remove a lot of volume grow a lot. You may use this menu to compact the file. The size of the file will normally reduce.

# Options

{button ,KL("Tools");} **See Also** Copyright © 1996 Benjamin BOURDERON ([Benjab@msn.com](mailto:Benjab@msn.com))

This windows allows you to customize several options in catalog, you can for exemple autoload the last file use in catalog or choose which method you prefer to use for the update checking.



## Installation

{button ,KL("Catalog")} **See Also**

Copyright © 1996 Benjamin BOURDERON ([Benjab@msn.com](mailto:Benjab@msn.com))

To install Catalog, you just have to click on the Setup.exe program, and the setup process will begin, you just have to read the instruction.

# Uninstallation

{button ,KL("Catalog")} **See Also**

Copyright © 1996 Benjamin BOURDERON ([Benjab@msn.com](mailto:Benjab@msn.com))

## **Windows 95 users :**

Open the **Control Panel**, then click on **the Add/Remove Program icon**. Then you have to select Catalog Shareware and click on **Add/Remove** Button. The uninstallation process will begin.

## **Windows NT users :**

An icon is created when you install Catalog Shareware. Click on this icon to start the uninstallation of Catalog.



# Shareware

{button ,KL("Catalog")} **See Also**

Copyright © 1996 Benjamin BOURDERON ([Benjab@msn.com](mailto:Benjab@msn.com))

## **Shareware :**

This application **Catalog** is not free, you can use it for a period of 30 days. Passed this month you must **Register** it. When I receive your payment, you will receive the Key which will allow you to register all version of Catalog, **Please note that I don't ship disk**

## **Distribution of the Shareware version :**

You can distribute this version of Catalog without any modification on all media.

## **Disclaimer of Warranty :**

THIS SOFTWARE AND THE ACCOMPANYING FILES ARE SOLD "AS IS" AND WITHOUT WARRANTIES AS TO PERFORMANCE OF MERCHANTABILITY OR ANY OTHER WARRANTIES WHETHER EXPRESSED OR IMPLIED.

Thanks for trying my shareware.

# Register

{button ,KL("Catalog")} **See Also**

Copyright © 1996 Benjamin BOURDERON ([Benjab@msn.com](mailto:Benjab@msn.com))

You can register Catalog on CompuServe or by sending to me a mail. When I'll get your registration, you will receive the Key which will allow you to register Catalog. Note that your registration will be **valid for all version of catalog**.

## **Compuserve :**

You can register Catalog (single user) on CompuServe :

- Go Forum : SWREG
- ID# : 10102

## **Mail :**

Fill, Print and send me this form (with your payment) to register Catalog, you will receive the Key which will allow you to register Catalog.

---

### Register form for a single user

Program: <b>Catalog</b>	# COPIES	TOTAL
Catalog (20\$US)	_____	_____ \$US

#### ADRESSE :

Name : \_\_\_\_\_

Address : \_\_\_\_\_

City, State, Zip : \_\_\_\_\_

Country : \_\_\_\_\_

Phone : \_\_\_\_\_

Internet Address : \_\_\_\_\_

Send me this form at this address :

**Benjamin BOURDERON**  
**9, rue Magenta**  
**69100 Villeurbanne**  
**France**

**Tree view**

this client area allows you to view the content of the current file, you can view the volume which are in the current open file

**List of files**

this area allows you to browse the files which are in the directory or to browse all the volumes in the current file if you click on 'Volumes'

## **Splitter**

The area allows you to split the Tree view and the list of files

## **Toolbar**

The toolbar contains the most used buttons.

## **Status Bar**

This status bar gives you some information about the status in catalog

**OK**

this button closes the current open window and continue a process if needed



**Cancel**

this button closes the current open window and cancel a process if needed

### **Properties for 'All Volumes'**

This window gives you information (number of files, of folder, drive type,...) about all volumes which are in the current file

### **Properties for a Volume**

This window gives you information (Id, label, number of files, of folder, drive type, Total size, ...) about a volume which is in the current file

## **Properties for a Folder**

This window gives you information (Name, date, attributes,...) about a folder which is in the current file

## **Properties for a File**

This window gives you information (Name, date, attributes,...) about a file which is in the current file

## **About Catalog**

This window gives you information about catalog (version, registration, contact)

**Continue**

This button allows you to continue loading Catalog, but if you think this program is useful don't forget to register it!

## **Registrar**

This button allows you to registrar Catalog.



## List of Volumes

This list shows you the volumes which can be export into a text file. you just have to select one or more volume and click on the OK button

**Select All**

This button select all volume to be export.

**Select None**

This button unselect all volume which was previously selected.

## **Export status**

This window show you the progress status for the export.

## **Help**

This button will run the help file.

## **Registrar**

In this window you can enter the User and Key ID to register Catalog. For more information click on the Help button

**List of drives**

this list allows you to choose which drive you would like to add in the current file, select one drive and click on the OK button to continue.

## **Options On Statup**

This option allows you to set options for the startup process of catalog



### **Options Update Checking**

This option allows you to change the update checking method for volumes. You can choose to have the checking method enabled or disabled. If you choose to enabled this options, you have the choice of checking by serial number or by the Volume Label.

### **Add volume status**

This window show you the progress status for the adding volume

## **Rename volume**

This window allows you to change the description of a volume.

**Update volume**

The volume has been found several times in the current. Select which one would like to update.

