

Using Quick View Plus within Netscape Navigator and Microsoft Internet Explorer

Quick View Plus 4.0.0 for Windows 95 and NT 4.0 includes support for viewing non-HTML files in Netscape Navigator versions 2.0 and above using Netscape's Plug-in API.

This version of Quick View Plus also includes support for viewing documents within Microsoft Internet Explorer as an ActiveX Document viewer.

This document describes the advanced plug-in and ActiveX viewing capabilities of Quick View Plus, and assumes the reader has a working knowledge of their Web browser and the Internet in general.

Contents

User Information

- What's a MIME type?
- What's the problem with MIME types?
- What does Quick View Plus do about these problems?

Quick View Plus and Netscape Navigator

- Plug-Ins versus Helper Applications in Netscape
- What versions of Netscape Navigator can Quick View Plus plug into?
- How do I configure Quick View Plus to work with Netscape?
- How do I print and copy to the clipboard from a plug-in?

Quick View Plus and Microsoft Internet Explorer

- ActiveX Document Viewing
- How do I configure Quick View Plus to work with Internet Explorer?

Webmaster information

- How does Quick View Plus save me time and money?
- HOW SHOULD I SETUP THE MIME TYPES ON MY SERVER?

User Information

What's a MIME type?

A MIME type is a text label that tells a Web browser the what type of content is contained within a file that it encounters. In their documentation for Windows and various applications, Microsoft tends to call this a "**Content Type**."

For instance, Microsoft Word documents have a MIME type of **application/msword**, web pages have a MIME type of **text/html** and ZIP files have a MIME type of **application/zip**. When a link in a web page is clicked on, the web server tells Navigator what MIME type the file is in and Navigator either views the file itself (as in the case of HTML or GIF files) or uses the plug-in that has registered that MIME type to view the file.

What's the problem with MIME types?

There are two problems with MIME types.

First, MIME types have not been defined for all the file formats that Quick View Plus supports. While most of the major applications have MIME types (like **application/msword** or **application/x-wordperfect6**), many of the lesser know formats (like R:Base, Wordstar and Q&A Write) don't. While this is an inconvenience for people who want to expose these legacy file types on the web, it does not present a major problem for more recent file types .

Second, MIME types must be specified in a very exact way. In general, internet file servers use the file's extension (the letters after the . in the file's name) to match a MIME type to a document. This means that documents must be named correctly or the MIME type will be wrong and the Web browser will not be able to run the right application to view the file. For instance if you have a WordPerfect document that is named **document.doc**, your server is likely to tell the browser it is a Microsoft Word document, not a WordPerfect document. Moreover, many servers have incomplete or incorrect MIME type associations. This often causes files to be identified by the server as some default value like "text/plain", defeating the browser's ability to choose the correct plug-in or viewer.

What does Quick View Plus do about these problems?

When Quick View Plus is installed, it sets itself up to be the plug-in for the following list of MIME types and extensions:

MIME Type	Extensions
application/dca-rft	rft,fft
application/dec-dx	dx
application/msword	doc
application/rtf	rtf
application/x-ami	sam
application/x-dbase	dbf
application/x-enable-spreadsheet	ssf
application/x-enable-wp	wpf
application/x-framework	fw3
application/x-freelance	pre
application/x-lotus123	wks,wk3,wk4,wg2
application/x-msaccess	mdb
application/x-msbinder	odb
application/x-msexcel	xls,xlc
application/x-mspowerpoint	ppt
application/x-msworks-db	wdb
application/x-msworks-wp	wps
application/x-mswrite	wri
application/x-multiplan	mod
application/x-paradox	db
application/x-quattro-dos	wq1,wq2
application/x-quattro-win	wb1,wb2
application/x-quickviewplus	
application/x-supercalc5	cal
application/x-wordperfect6	wpd
image/tiff	tif,tiff
image/x-amidraw	sdw
image/x-autocad	dxf
image/x-cgm	cgm

image/x-gem	img
image/x-harvard-graphics	sy3,ch3
image/x-hpgl	pgl
image/x-lotus-pic	pic
image/x-micrografx	drw
image/x-pc-paintbrush	pcx,dcx
image/x-targa	tga,targa
image/x-win-bitmap	bmp,ico,cur,rle,dib
image/x-win-metafile	wmf
image/x-wordperfect-graphics	wpg

While these types cover all the current major applications and will fit the needs of most users, they may not be appropriate for everyone. For instance, you might have a image editing program that you would like to use to open TIFF files instead of Quick View Plus. In this case you need the ability to remove Quick View Plus's support for the **image/tiff** MIME type, allowing you to install your image editor as a helper application. Alternatively, you may have MIME types that your corporation uses internally, or are unknown to us, that you would like Quick View Plus to handle. For instance, your corporate intranet may use **application/wordperfect** instead of **application/x-wordperfect6** for WordPerfect documents. In this case you need the ability to add Quick View Plus support for that MIME type.

To resolve these problems, Quick View Plus provides you with the ability to define and/or change MIME types and the actions associated with them, using methods described later in this document. Nevertheless, some problems will remain which must be solved by the Webmaster at the web server. For more information on this topic, see the *Webmaster Information* section below for more details on how to use Quick View Plus in a corporate intranet environment.

How Do I Define or Change the MIME types handled by Quick View Plus?

Because of differences in how the browsers store their MIME type information, this is handled differently for Netscape Navigator and Microsoft Internet Explorer. To change the MIME type settings for one of these browsers, choose the Quick View Plus configuration dialog from the View/Programs... menu item in a Quick View Plus window, or from the "Configure Quick View Plus" menu item from the Quick View Plus taskbar icon. The configuration dialog has separate tabbed areas for Netscape and Internet Explorer.

Quick View Plus and Netscape Navigator

Plug-Ins versus Helper Applications in Netscape

A Helper Application is an external application that the user can instruct Netscape to invoke when it encounters a file it cannot normally view. Quick View Plus still the ability it always had to function as a helper application within Netscape, but the advent of the plug-in architecture allows Quick View Plus to provide a more seamless way to integrate its viewers within Netscape.

A plug-in is an object that allows some file format, like Microsoft Word, Lotus 1-2-3 or ZIP, to be displayed and used seamlessly inside Navigator, just like HTML web pages are. A plug-in tells Navigator what MIME type it supports and when a file of that type is clicked on, Netscape invokes the plug-in to display the file. Plug-ins can also be used to display files embedded in web pages and to display email attachments. From the user's point of view, the plug-in operates invisibly within Netscape, thus removing the intermediate step of having the user tell Netscape to run an outside Helper Application.

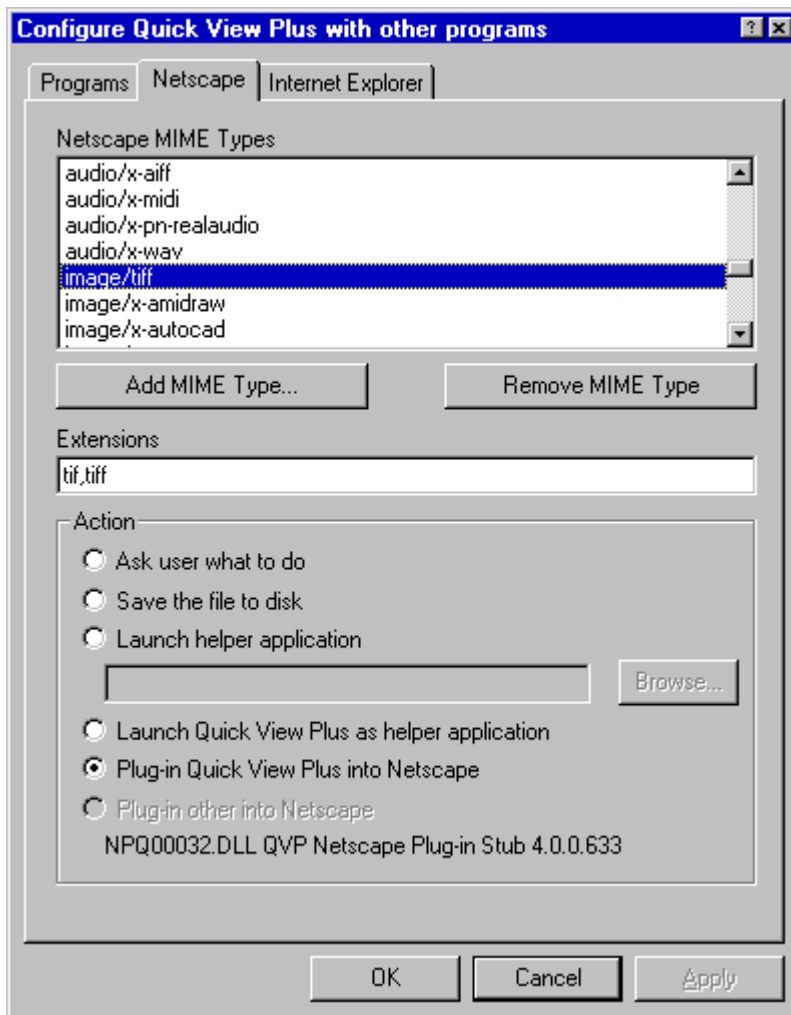
What versions of Netscape Navigator can Quick View Plus plug into?

Netscape Navigator versions 2.0 and above support plug-ins.

Quick View Plus for Windows 95 can only plug into the Windows 95 / Windows NT version of Netscape Navigator. All versions of Navigator can use Quick View Plus as a Helper Application.

How do I configure Quick View Plus with Netscape?

From the Quick View Plus View/Programs... configuration dialog, choose the Netscape tab. It will look like this:



MIME Types

This list box shows all the MIME types that have been setup in Netscape. Note that this list does not contain many of the default MIME types that Netscape lists in its Helpers dialog because these types are hard-coded into Navigator and cannot be changed. When you select a MIME type from this list, the associated extensions and actions required for this MIME type are displayed below.

Add MIME Type...

This button displays a dialog that allows you to enter a new MIME type that you would like to associate with some action.

Remove MIME Type

This button removes the selected MIME type. Navigator will return to its default behavior for this MIME type.

Extensions

This edit box allows you to associate extensions with the selected MIME type. Netscape uses these extension to determine the MIME type of a file when it is not provided by the server. For

instance, when looking at an FTP site, MIME types are not included with the files, so Navigator uses these extensions to determine the MIME types of the files. More than one extension can be entered for a single MIME type. For instance, both the extensions **tif** and **tiff** are associated with the **image/tiff** MIME type, so files named picture.tif and picture.tiff would both be identified as **image/tiff**. Multiple extensions should be separated with commas like so "tif, tiff".

Action

This group of radio buttons allows you to select the action Navigator will take when a file with the selected MIME type is clicked on.

Ask user what to do

Netscape will bring up a dialog box asking you what to do with the file.

Save the file to disk

Netscape will bring up a Save As dialog box.

Launch helper application

Netscape will launch the application defined in the edit box below. You may use the Browse button to search for helper applications.

Launch Quick View Plus as helper application

This is a shortcut to selecting Launch helper application and browsing for SCCVAPI.EXE on Windows 3.1 or QVP32.EXE on Windows 95.

Plug-in Quick View Plus into Netscape

Netscape will use Quick View Plus as a plug-in to view the file.

Plug-in other into Netscape

This means that a plug-in other than Quick View Plus is installed for the selected MIME type. When this is the case, you will not be able to change this MIME type to a different action because QVPMIME has no control over plug-ins that are not Quick View Plus's. The text below this selection will show some technical information about the plug-in.

OK

This button saves the changes you have made and exits the application.

Cancel

This button cancels your changes and exits the application.

How do I print and copy to the clipboard from a plug-in?

Right clicking inside the plug-in window will display a context menu that allows you to print or copy to the clipboard. Printing from Netscape's File menu will only work when the file is being viewed using the full Netscape window, i.e. not when the file is embedded inside an HTML document. Copying from Netscape's Edit menu will never work with a plug-in.

Quick View Plus and Microsoft Internet Explorer

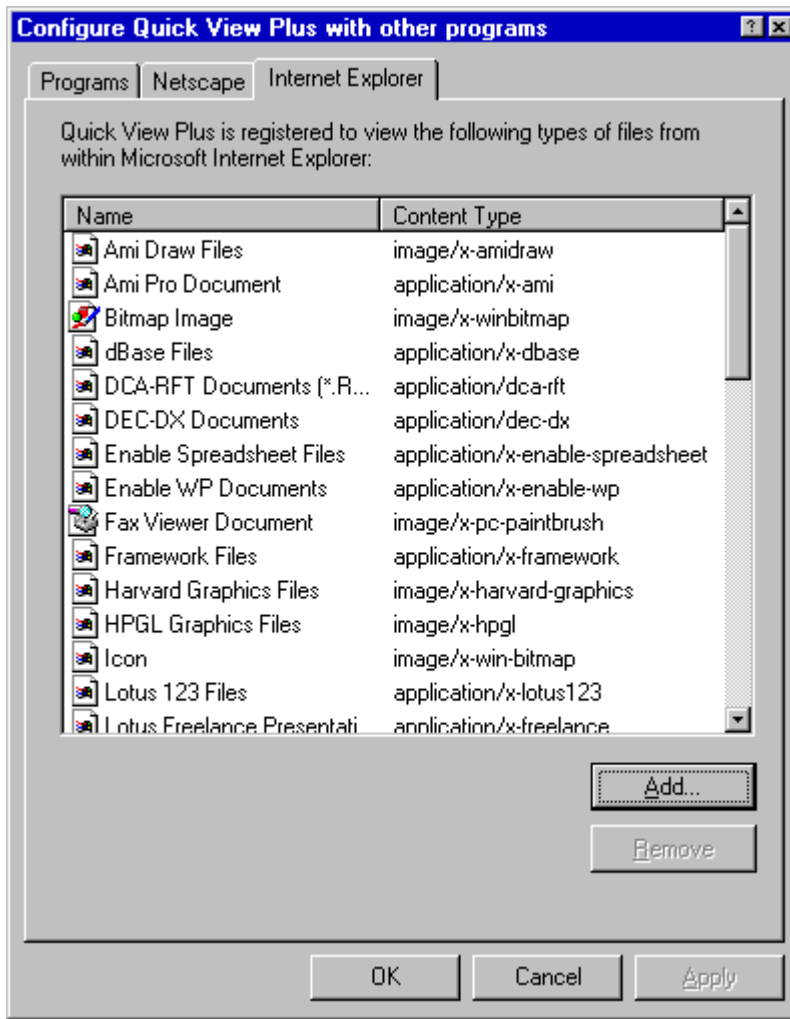
ActiveX Document Viewing

Microsoft Internet Explorer versions 3.0 and above support the embedding of other applications within the Internet Explorer window. This is accomplished through Microsoft's ActiveX Document specification. An ActiveX Document viewer such as Quick View Plus will merge with Internet Explorer's window frame and menus for a truly seamless integration. When Quick View Plus is invoked within Internet Explorer, the Edit and View menus control the Quick View Plus display. Quick View Plus help is also available from the Help menu. The Quick View Plus toolbar is also available within the Internet Explorer window, and can be displayed or hidden as the user wishes.

Virtually the entire functionality of the Quick View Plus application is available from within Internet Explorer!

How do I configure Quick View Plus to work with Internet Explorer?

From the Quick View Plus View/Programs... configuration dialog, choose the Internet Explorer tab. It will look like this:



This dialog box lists the file types that Quick View Plus is currently configured to display within Internet Explorer. The column on the left shows the name and icon for each file type; the column on the right shows the internet content type name (MIME type) for that file type.

You may add types to this list by clicking the Add button and entering information for the new type.

You may remove types from this list by selecting one or more types from the list and clicking the Remove button.

Webmaster information

How does Quick View Plus save me time and money?

In a corporate intranet environment, having Quick View Plus plugged into Netscape on your users' machines saves you the time and hassle of converting all your content into HTML. Word documents, 1-2-3 spreadsheets, PowerPoint presentations and all the other file types Quick View Plus supports can simply be referenced or embedded (using the HTML EMBED tag) in your web pages.

How should I setup the MIME types on my server?

There are a few of ways to do this. One way is to edit your mime.types file (or its equivalent on your web server) and include all the MIME types (and their associated extensions) listed in the *What does Quick View Plus do about these problems* section above.

Another way is to remove all of the MIME type mappings from your mime.types file except the ones that map to formats Quick View Plus does not support. For instance you would remove the mapping of **application/msword** to the .doc extension but not the *text/html* to .htm extension mapping. Once you have removed all the extra MIME type mappings from your mime.types file you can setup the default MIME type on your server to be **application/x-quickviewplus** (it's usually **text/plain**). This MIME type is installed by default when Quick View Plus plugs into Netscape or Microsoft Internet Explorer. Then, any file with an extension that is not explicitly mapped in mime.types will be viewed using the Quick View Plus plug-in. This works because Quick View Plus does not really care what the MIME type is; MIME types are just a way to get Navigator to run the Quick View Plus plug-in. Once the plug-in gets control, the file is identified by its content, not by the MIME type.

NOTE: We don't recommend that you map your browser's built-in MIME types such as **text/plain** and **text/html** to application/x-quickviewplus, as it can cause unpredictable behavior.
